

PROJECT #444PPS

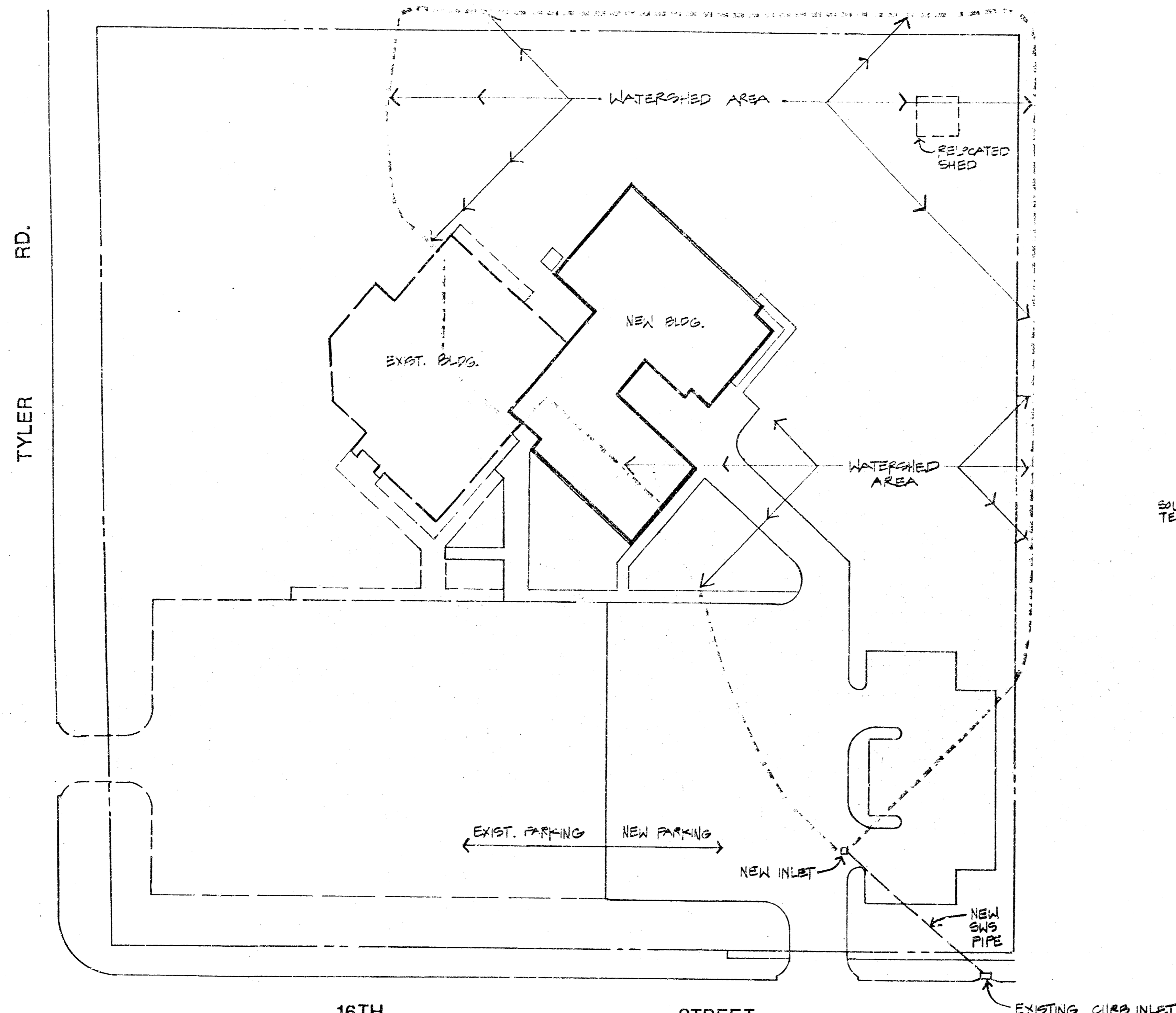
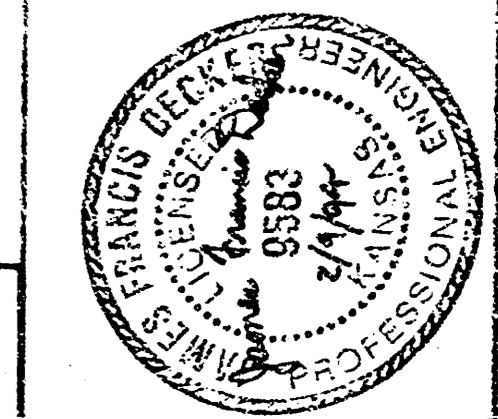
INDEX CODE 607861

APPROVED AS NOTED
BY CITY ENGINEER OF WICHITA

Sanitary Sewers _____
 Storm Sewers VRH
 Driveway Approaches _____
 Water Mains _____
 Paving _____

NOTE TO CONTRACTORS

Inspection and testing for this project is to be provided by a Licensed Consulting Engineering Firm under contract with the Owner/Developer. Said inspection to be in accordance with the City of Wichita standard construction engineering practices and certified by a Licensed Professional Engineer. No work shall be performed in dedicated easements or public right-of-way by the Contractor without such inspection nor shall any work be commenced without written authorization by the City Engineer.



16TH NORTH STREET
 NORTH
 SITE PLAN
 1"=40'-0"

STORM WATER RUNOFF CALCULATIONS (RATIONAL METHOD)

30,181 S.F. ASPHALT PAVEMENT/CONCRETE PAVEMENT/ROOFS
 98,885 S.F. LAWN

$30,181 \times .95$ (RUNOFF COEFFICIENT) = 28,672
 $98,885 \times .35$ " = 34,609

49,282 S.F. ADJUSTED GROSS AREA

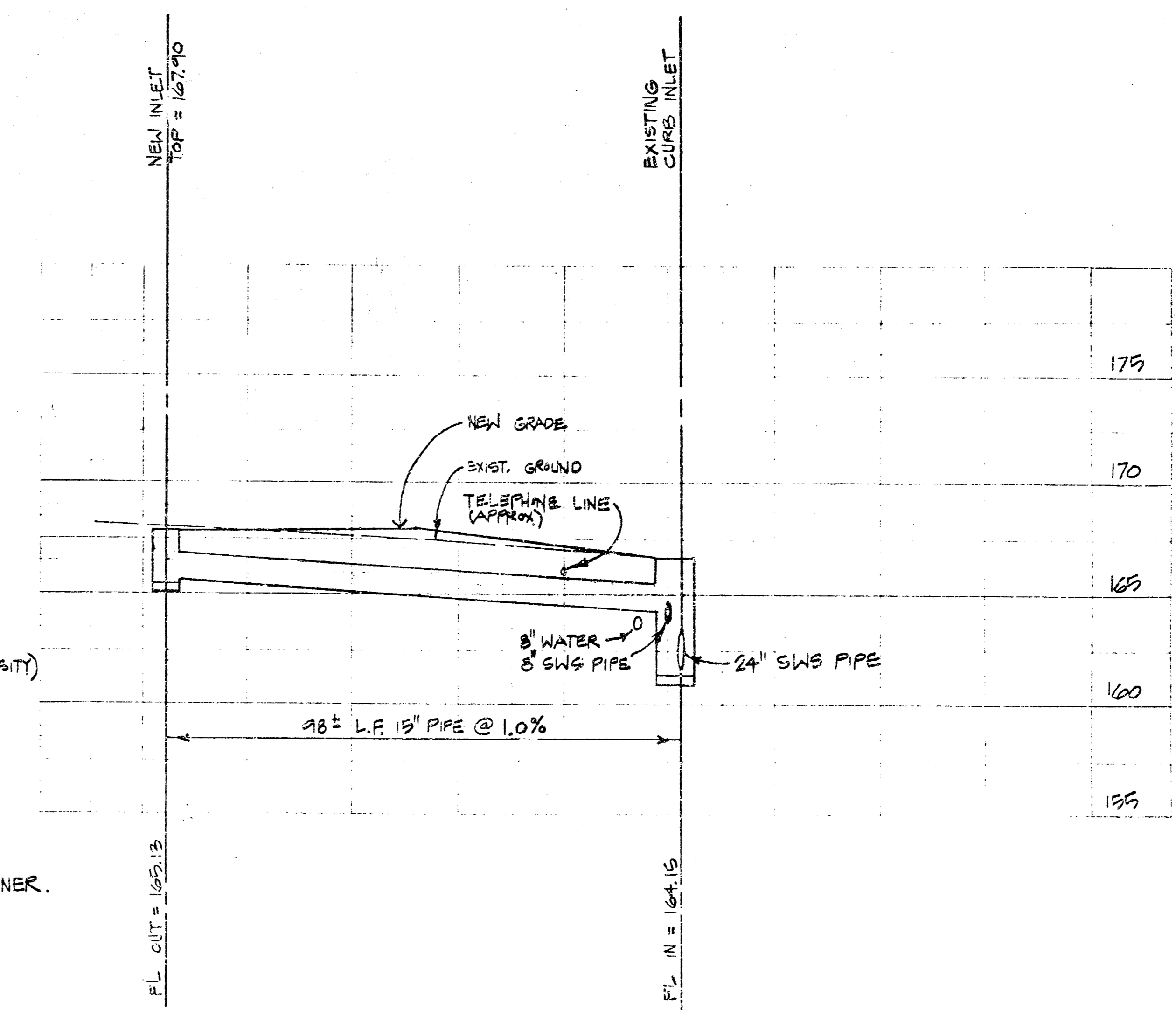
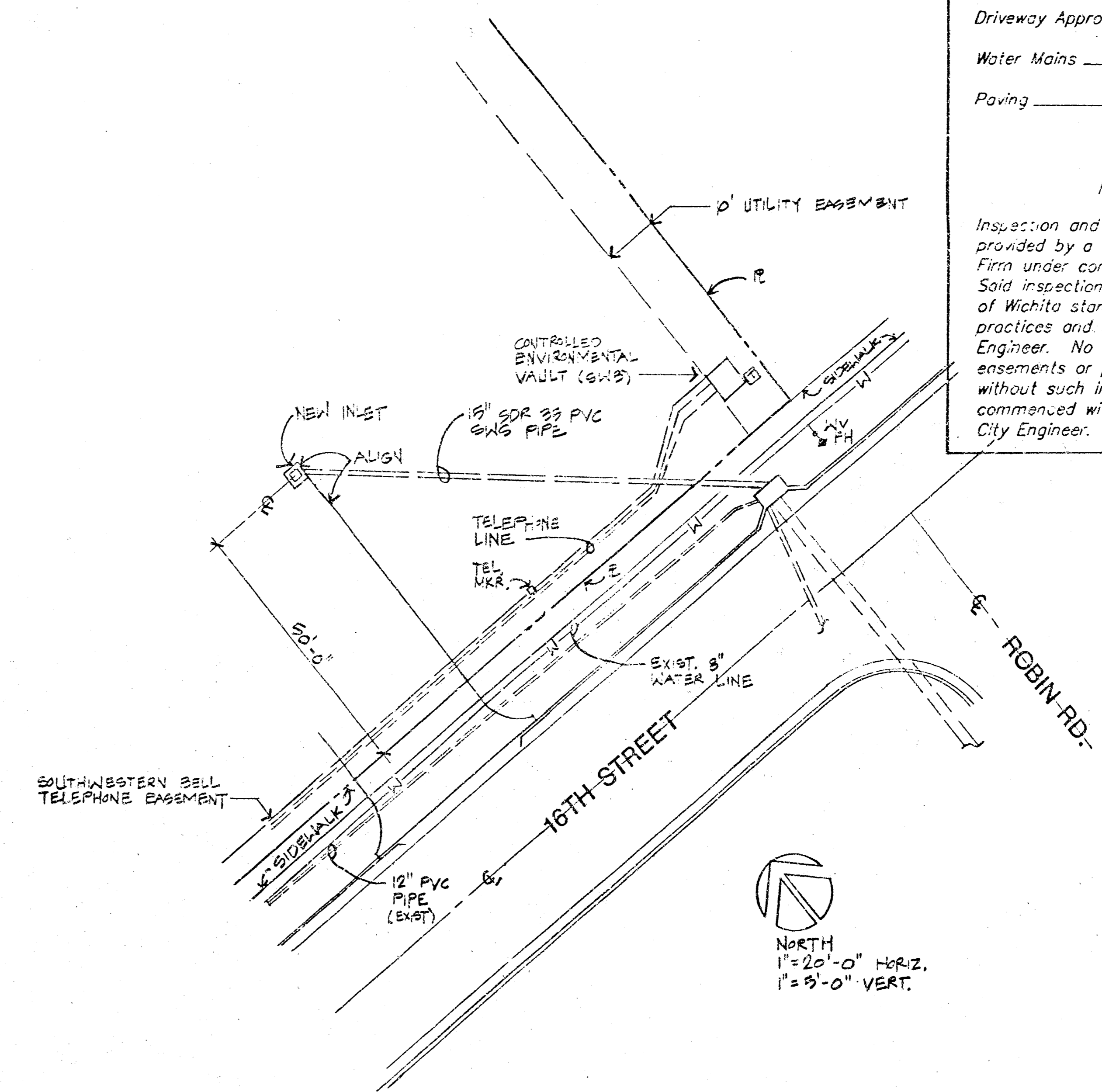
$Q = ACI$

Q = THE RUNOFF OF THE AREA, IN CUBIC FEET PER SECOND
 A = THE AREA TO BE DRAINED, IN ACRES
 C = THE COEFFICIENT OF RUNOFF
 I = THE INTENSITY OF RAINFALL, IN INCHES PER HOUR

$Q = ACI$
 $Q = 1.13$ (AREA X COEFFICIENT) X 4 (RAINFALL INTENSITY)
 $Q = 4.52$ FT³/SEC.

@ 1% SLOPE - 15" Ø PIPE SIZE

- NOTES
 1. PIPE SIZE WAS DETERMINED BY MANNING'S PIPE FLOW CHART.
 2. MAINTENANCE OF SWS PIPE IS TO BE BY OWNER.



COVENANT PRESBYTERIAN CHURCH
 WICHITA, KANSAS

REV. SHEET DATE
 2507.00

28 JANUARY 1994