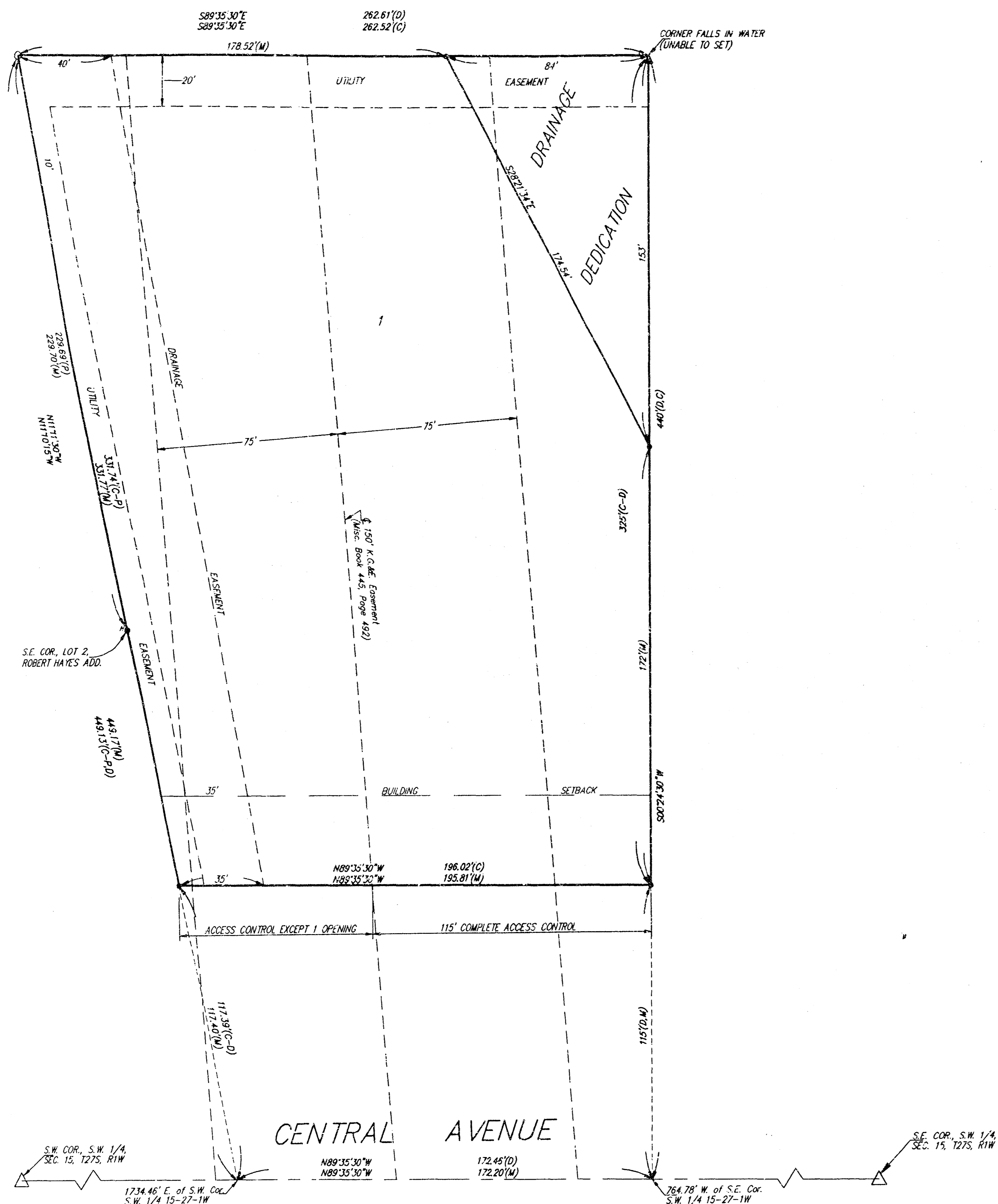


# HOSKINSON ADDITION

## WICHITA, SEDGWICK COUNTY, KANSAS



State of Kansas) SS We, Baughman Company, P.A., Surveyors in Sedgwick County do hereby certify that we have surveyed and platted "HOSKINSON ADDITION", Wichita, Sedgwick County, Kansas and that the accompanying plat is a true and correct exhibit of the property surveyed, described as follows: A tract in the S.W. 1/4 of Sec. 15, Twp. 27-S, R-1-W of the 6th P.M., Sedgwick County, Kansas, described as beginning at a point 764.78 feet west of the S.E. Corner thereof; thence N89°35'30"W along the south line of S.W. 1/4, 172.46 feet to a point 1734.46 feet east of the S.W. Corner of said S.W. 1/4; thence N11°10'15"W, 449.13 feet; thence S89°35'30"E, 262.61 feet to a point north of beginning as measured at right angles to the south line of said S.W. 1/4; thence S00°24'30"W, 440 feet to beginning, except the south 115 feet deeded for street.

Existing public easements and dedications being vacated by virtue of K.S.A. 12-512(b).  
Baughman Company, P.A.

\_\_\_\_\_  
Gregory F. Severns  
Surveyor

Know all men by these presents that we, the undersigned, have caused the land in the surveyors certificate to be platted into a Lot to be known as "HOSKINSON ADDITION", Wichita, Sedgwick County, Kansas. The utility easements are hereby granted as indicated for the construction and maintenance of all public utilities. The drainage easement is hereby granted as indicated for drainage purposes. The drainage dedication is hereby dedicated for drainage purposes and other public uses. All abutters rights of access to or from Central Avenue over and across the south line of Lot 1 are hereby granted to the City of Wichita, Kansas provided, however, that Lot 1 shall have access to Central Avenue at one location over all except the east 115 feet thereof as shall be determined by the City Engineer of the City of Wichita, Kansas. The Minimum Building Pad Elevation for lowest floor shall be 126.0 City Datum (1313.4 M.S.L.).

Owner

Richard D. Hoskinson Verda M. Hoskinson  
Equitable Trust

Salah Jamaledine Wissam Jamaledine

State of Kansas) SS The foregoing instrument acknowledged before me, this \_\_\_\_ day of \_\_\_\_\_, 1994, by Richard D. Hoskinson and Verda M. Hoskinson, husband and wife.

\_\_\_\_\_  
Notary Public

My App't. Exp. \_\_\_\_\_

State of Kansas) SS The foregoing instrument acknowledged before me, this \_\_\_\_ day of \_\_\_\_\_, 1994, by Salah Jamaledine and Wissam Jamaledine, husband and wife.

\_\_\_\_\_  
Notary Public

My App't. Exp. \_\_\_\_\_

Scale: 1" = 30'

MINIMUM BUILDING PAD ELEVATION = 126.0 CITY DATUM (1313.4 M.S.L.)

(C) = CALCULATED  
(M) = MEASURED  
(D) = DESCRIBED  
(C-D) = CALCULATED PER DESCRIBED INFO.  
(C-F) = CALCULATED PER PLATTED INFO.

BENCHMARK:  
DISC ON N.E. END OF BRIDGE OVER BIG SLOUGH ON CENTRAL AVENUE.  
ELEV. = 1317.50 M.S.L. (130.10 CITY DATUM)

• = #4 REBAR W/ "BAUGHMAN" CAP (SET)  
# = NAIL IN CAP (FOUND)  
○ = 1/2" IRON (FOUND)

This plat of "HOSKINSON ADDITION", an Addition to Wichita, Sedgwick County, Kansas has been submitted to and approved by the Wichita-Sedgwick County Metropolitan Area Planning Commission, Wichita, Kansas.  
Dated this \_\_\_\_ day of \_\_\_\_\_, 1994.  
Wichita-Sedgwick County Metropolitan Area Planning Commission

\_\_\_\_\_  
James D. Miner  
Chairman

\_\_\_\_\_  
Marvin S. Krout  
Secretary

This plat approved and all dedications shown hereon accepted by the City Council of the City of Wichita, Kansas, this \_\_\_\_ day of \_\_\_\_\_, 1994.

\_\_\_\_\_  
Elma Broadfoot  
Mayor

\_\_\_\_\_  
Pat Burnett  
City Clerk

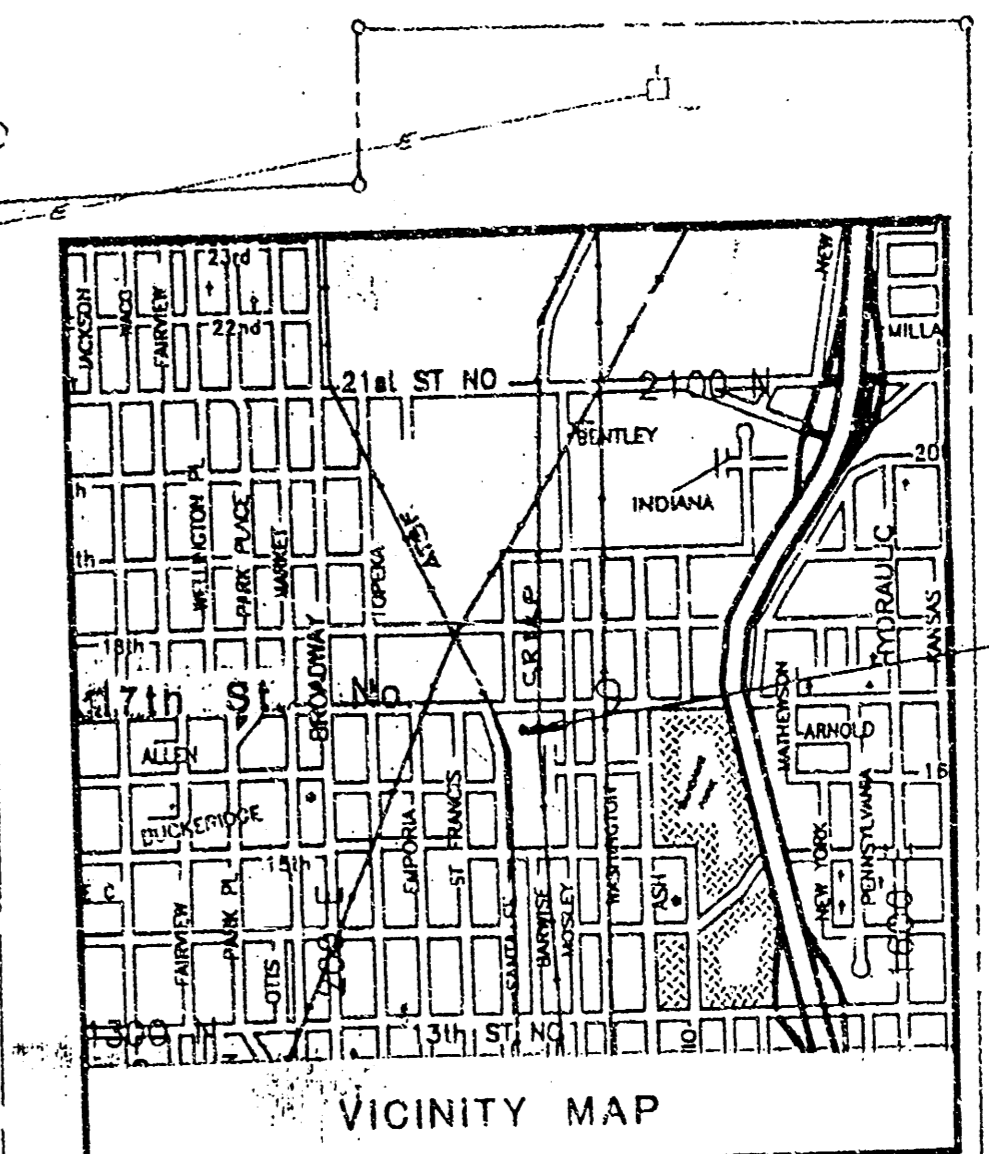
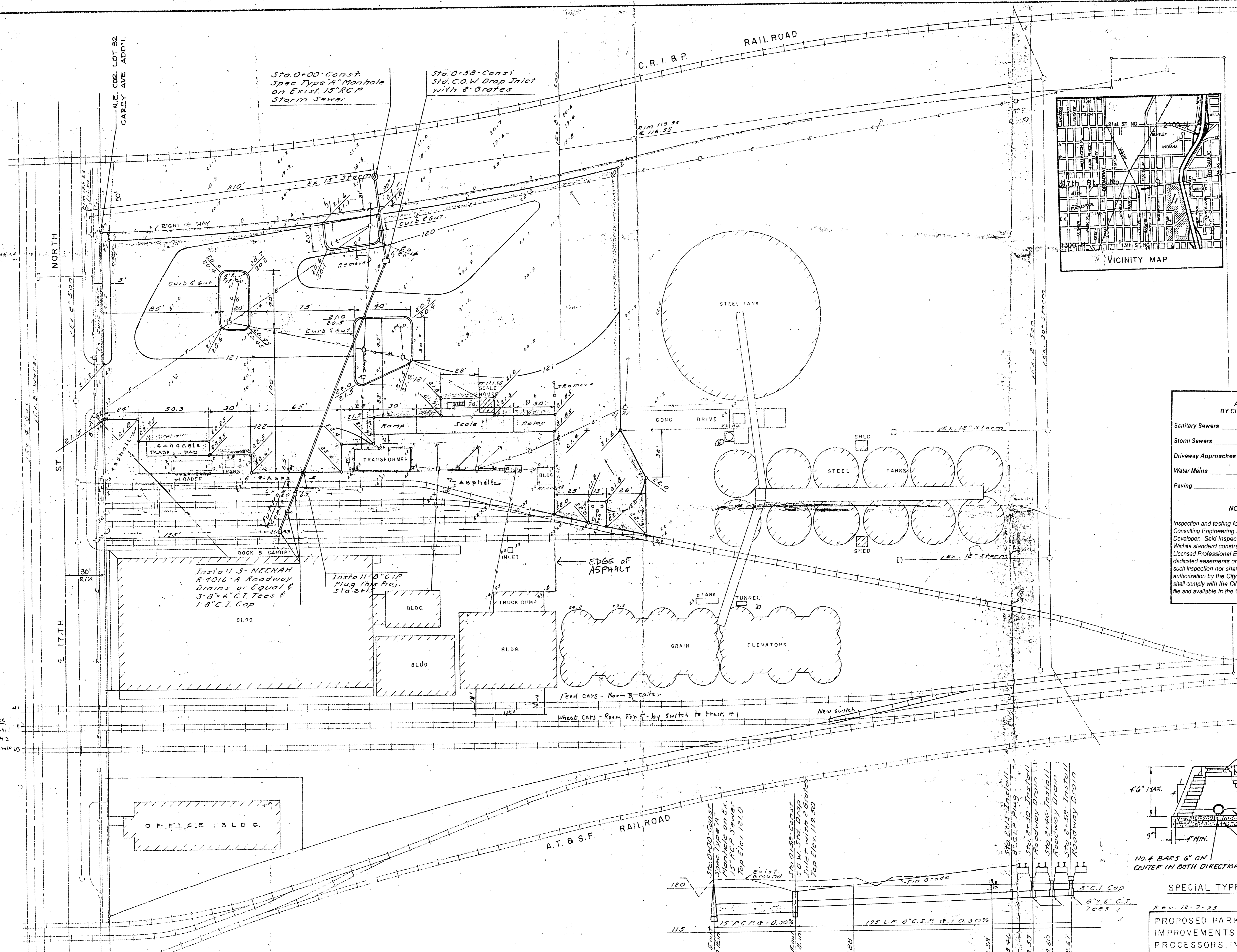
Entered on transfer record this \_\_\_\_ day of \_\_\_\_\_, 1994.

\_\_\_\_\_  
Susan E. Crockett-Spoon  
County Clerk

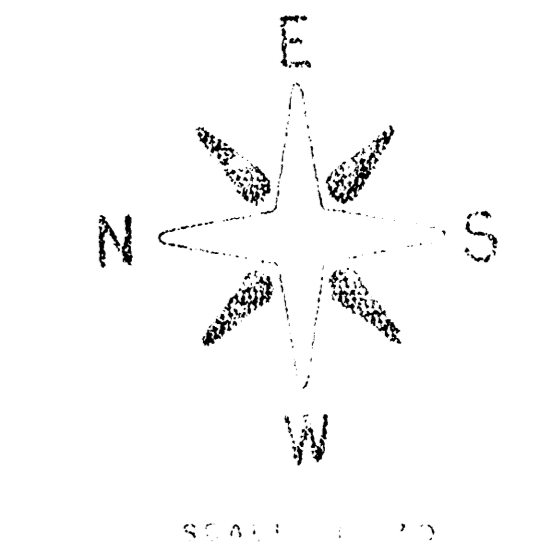
State of Kansas) SS This is to certify that this plat has been filed for record in the office of the Register of Deeds, this \_\_\_\_ day of \_\_\_\_\_, 1994, at \_\_\_\_ o'clock \_\_\_\_ M; and is duly recorded.

\_\_\_\_\_  
Pat Kettler  
Register of Deeds

\_\_\_\_\_  
Ed Resa  
Deputy



Site Location

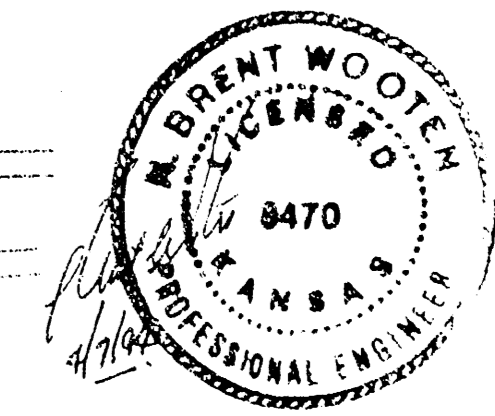


APPROVED AS NOTED  
BY CITY ENGINEER OF WICHITA

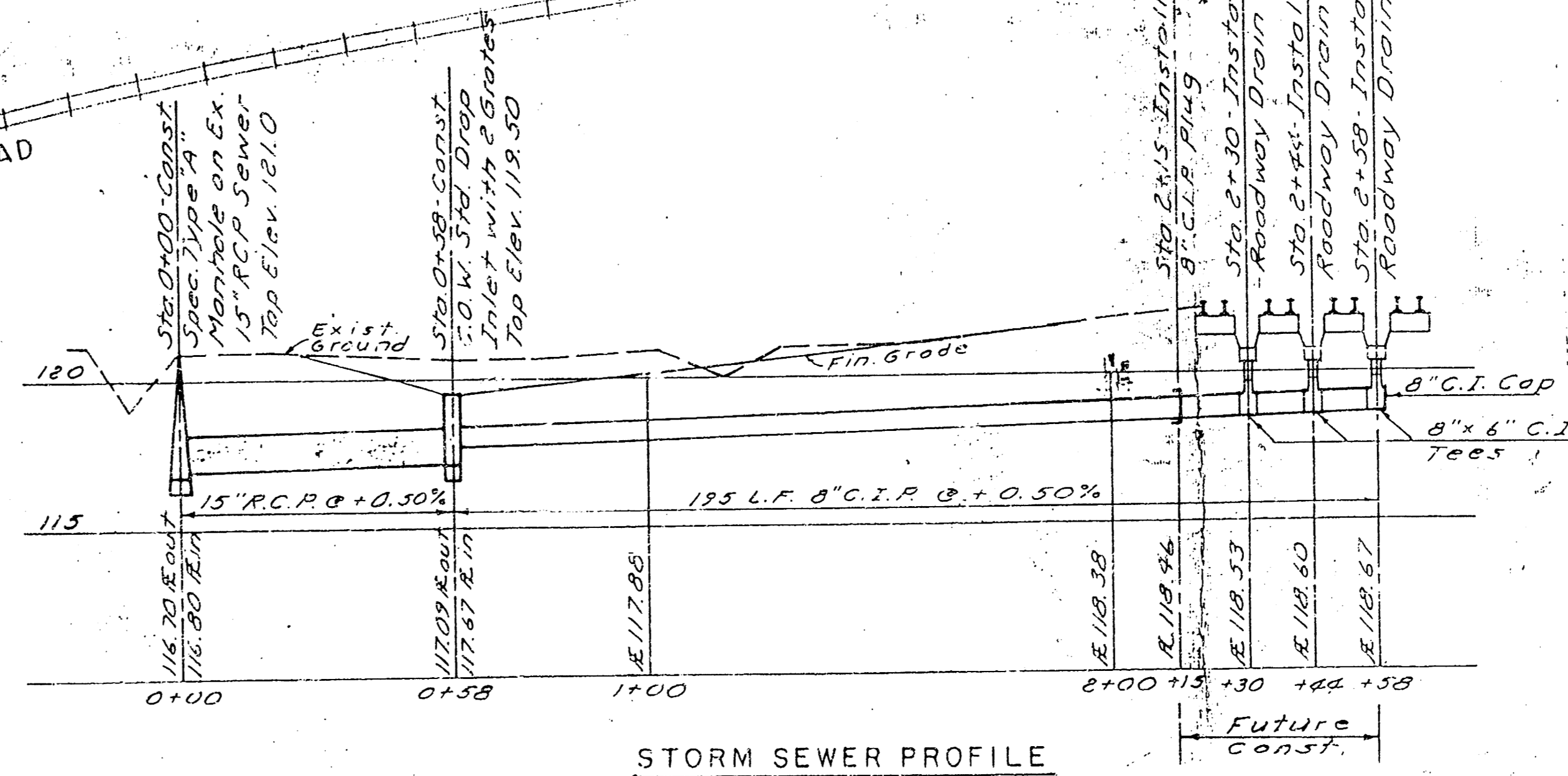
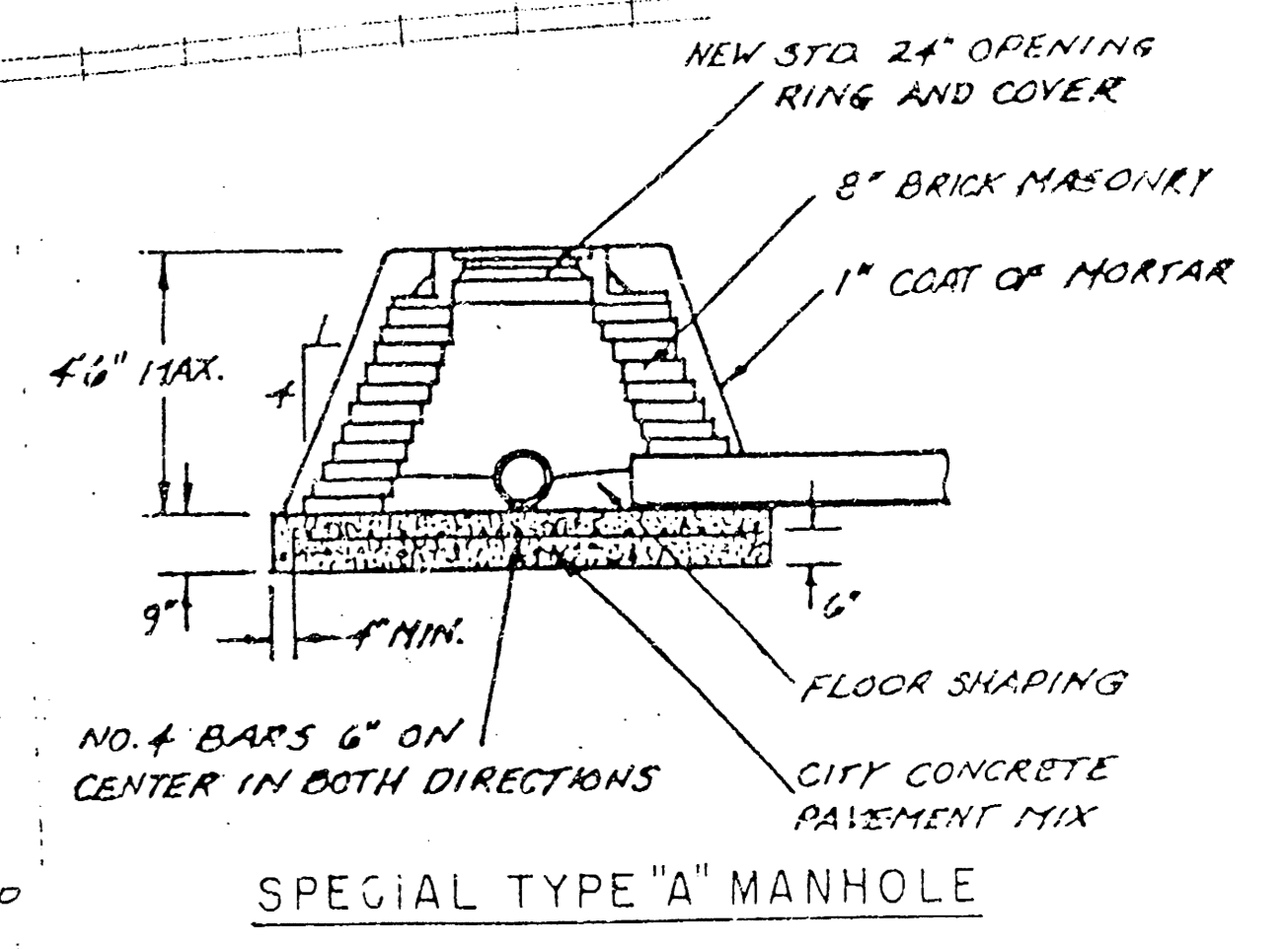
Sanitary Sewers \_\_\_\_\_  
Storm Sewers VRH 4/13/94  
Driveway Approaches \_\_\_\_\_  
Water Mains \_\_\_\_\_  
Paving \_\_\_\_\_

**NOTE TO CONTRACTORS**

Inspection and testing for this project are to be provided by a Licensed Consulting Engineering Firm under contract with the Owner / Developer. Said inspection to be in accordance with the City of Wichita standard construction engineering practices and certified by a Licensed Professional Engineer. No work shall be performed in dedicated easements or public right-of-way by the Contractor without such inspection nor shall any work be commenced without written authorization by the City Engineer. All Construction and Materials shall comply with the City of Wichita Specifications and Standards (on file and available in the City Engineer's Office).



NOTE  
75 lb. Asst.  
Track #2  
700 light grain 45  
Cars -

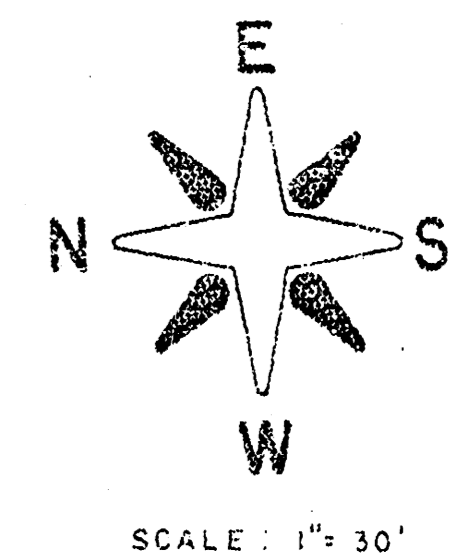
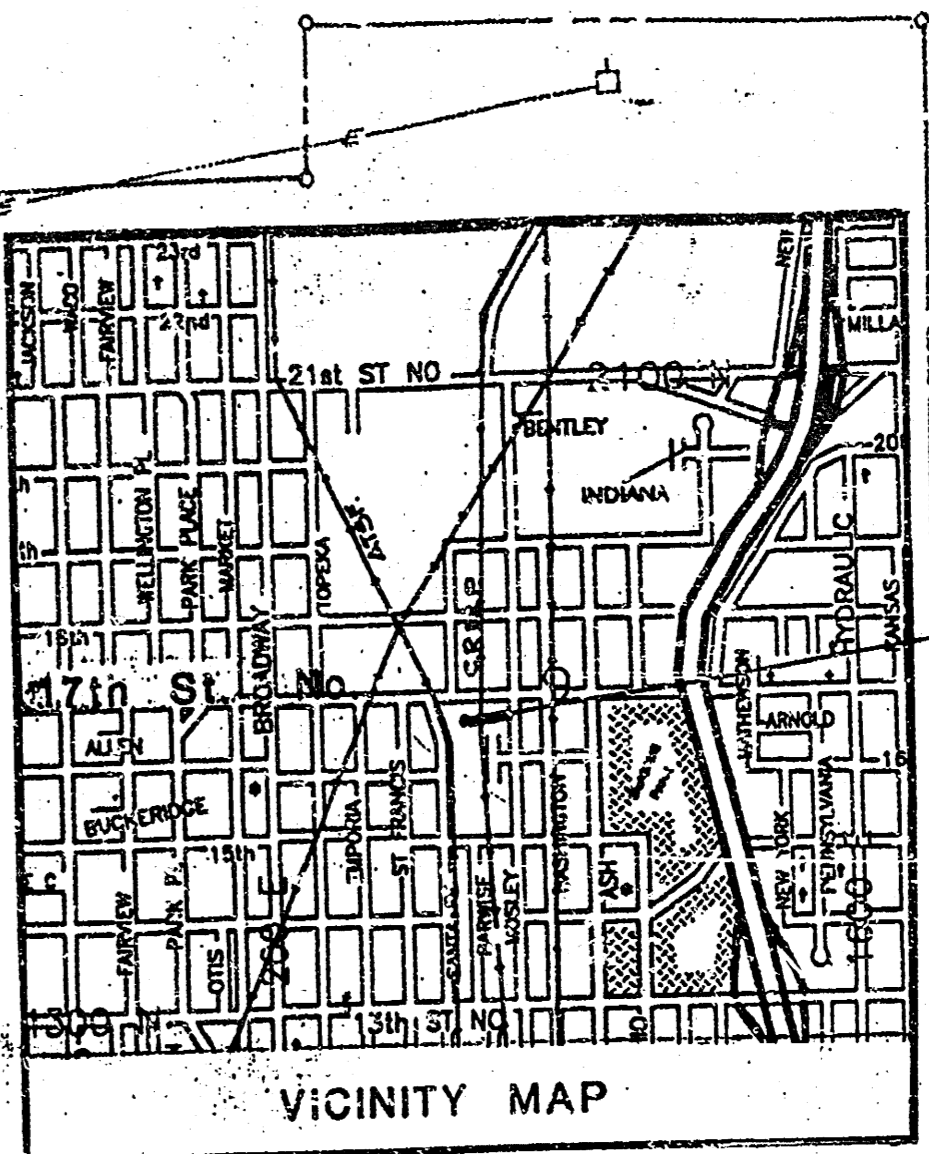
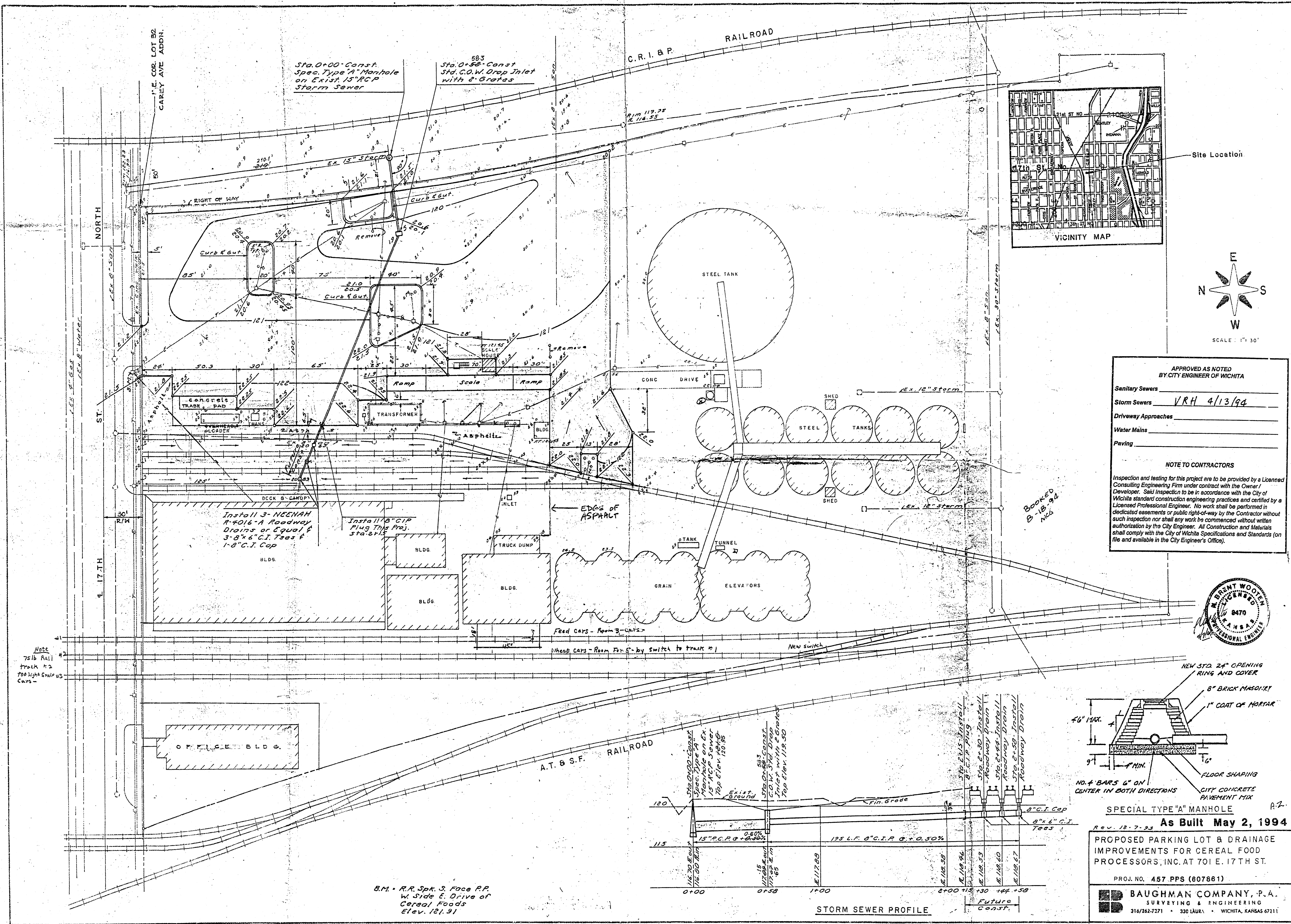


B.M. R.R. Spk. S. Face R.P.  
W. Side E. Drive of  
Cereal Foods  
Elev. 121.31

PROPOSED PARKING LOT & DRAINAGE IMPROVEMENTS FOR CEREAL FOOD PROCESSORS, INC. AT 701 E. 17TH ST.

PROJ. NO. 457 PPS (607861)

**BAUGHMAN COMPANY, P.A.**  
SURVEYING & ENGINEERING  
316/262-7271 • 330 LAURA • WICHITA, KANSAS 67211

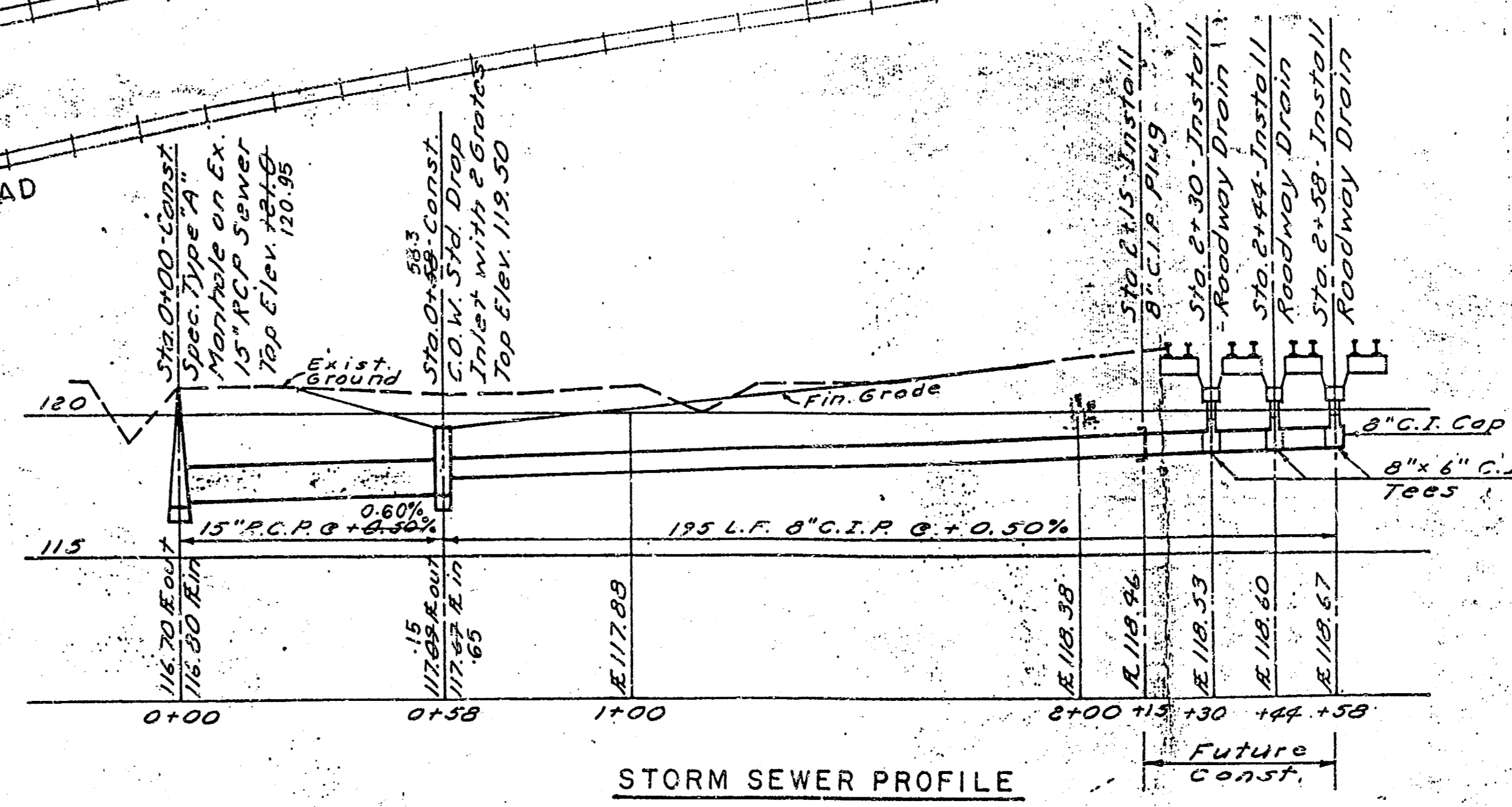
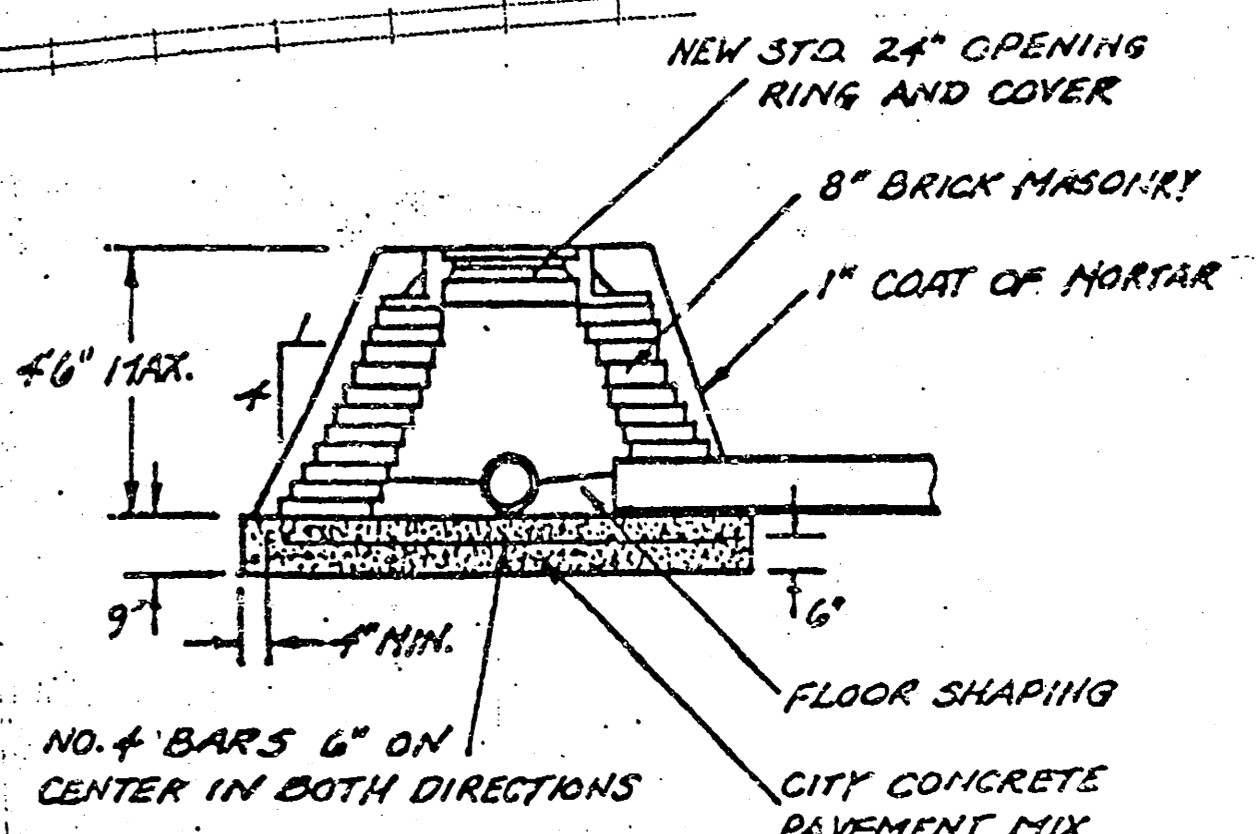
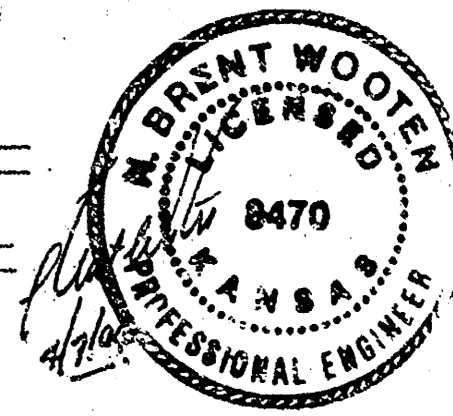


APPROVED AS NOTED  
BY CITY ENGINEER OF WICHITA

Sanitary Sewers \_\_\_\_\_  
 Storm Sewers VRH 4/13/94  
 Driveway Approaches \_\_\_\_\_  
 Water Mains \_\_\_\_\_  
 Paving \_\_\_\_\_

NOTE TO CONTRACTORS

Inspection and testing for this project are to be provided by a Licensed Consulting Engineering Firm under contract with the Owner / Developer. Said inspection to be in accordance with the City of Wichita standard construction engineering practices and certified by a Licensed Professional Engineer. No work shall be performed in dedicated easements or public right-of-way by the Contractor without such inspection nor shall any work be commenced without written authorization by the City Engineer. All Construction and Materials shall comply with the City of Wichita Specifications and Standards (on file and available in the City Engineer's Office).



As Built May 2, 1994

PROPOSED PARKING LOT & DRAINAGE IMPROVEMENTS FOR CEREAL FOOD PROCESSORS, INC. AT 701 E. 17TH ST.

PROJ. NO. 457 PPS (607861)

**BAUGHMAN COMPANY, P.A.**  
 SURVEYING & ENGINEERING  
 316/262-7271 • 330 LAUREL • WICHITA, KANSAS 67211

Note  
 75 lb Rail  
 Track #2  
 700 High Grain  
 Cars

B.M. - R.R. Spk. 3, Face P.P.  
 W. Side E. Drive of  
 Cereal Foods  
 Elev. 121.91