

Benchmarks

City Disc 99' S & 64' E of the centerlines of both Maize Road and 21st St. N.
Elev = 164.30 City Datum

"□" cut top of curb near S.E. corner of Lot 4, Pearson Farms 3rd Addition
Elev = 166.04 City Datum

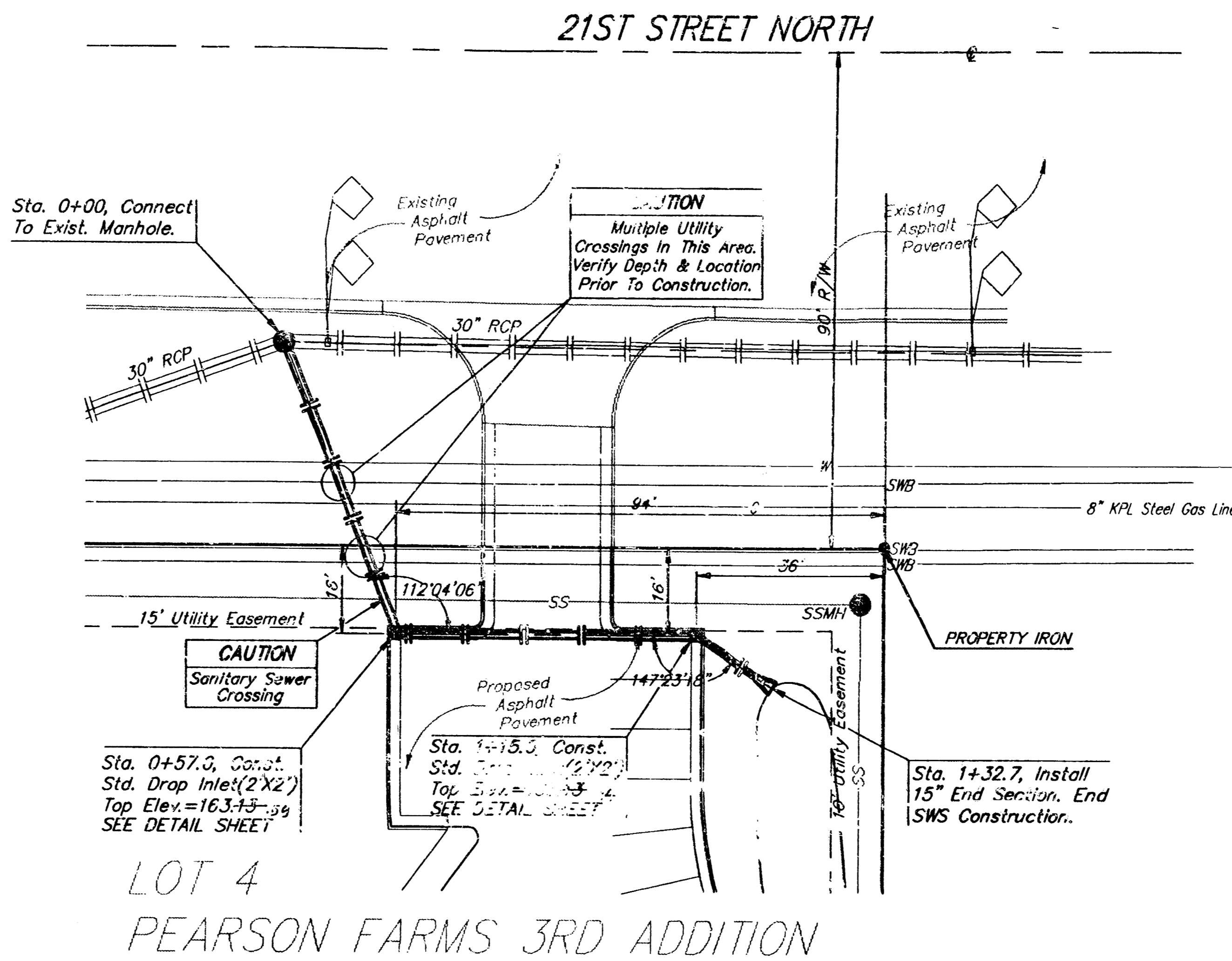
DRAINAGE DATA
LOT 4, PEARSON FARMS 3RD ADD.
DA = 2.7 Acres
C = 0.8
QS = 9.8 cfs
Q100 = 15.8 cfs

APPROVED AS NOTED
BY CITY ENGINEER OF WICHITA

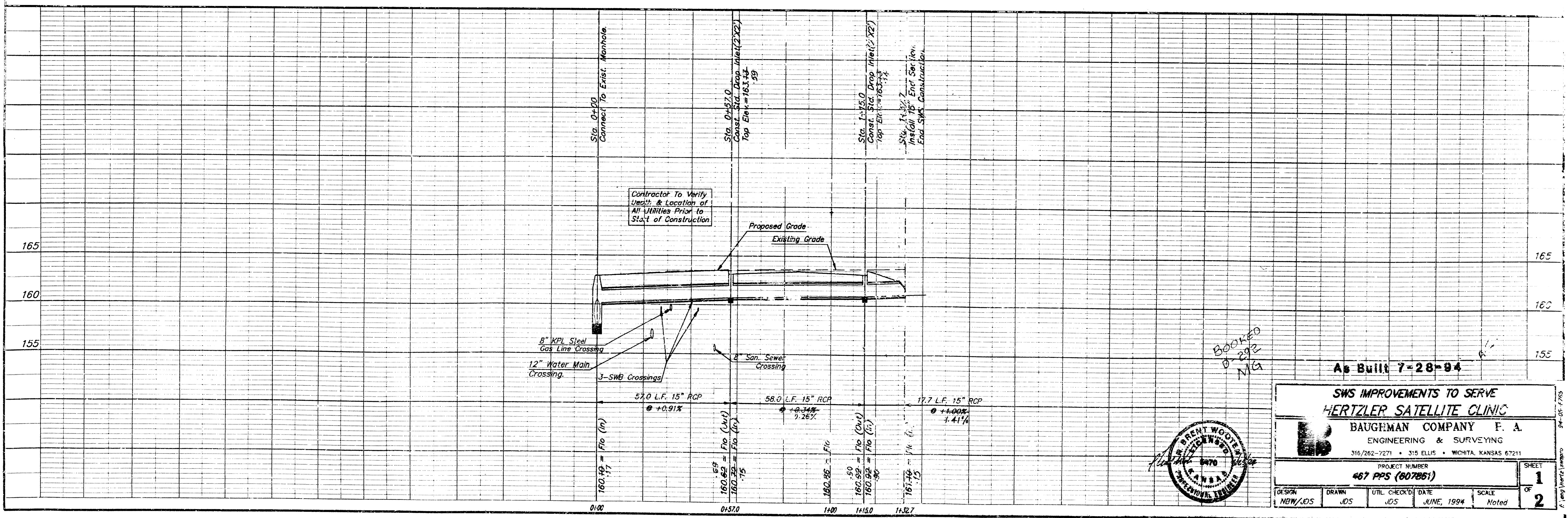
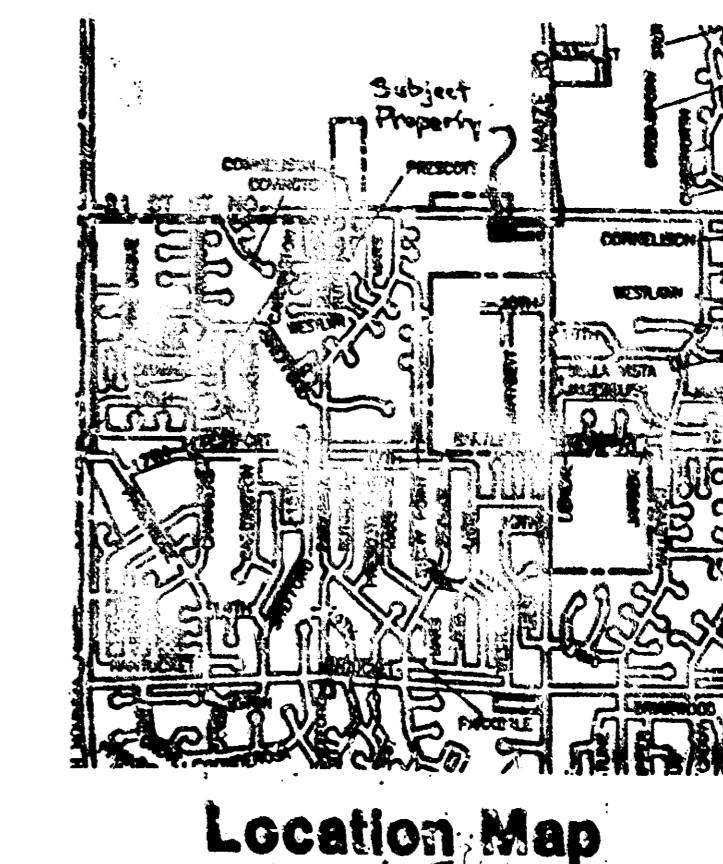
Sanitary Sewers _____
Storm Sewers VRH 6/24/94
Driveway Approaches _____
Water Mains _____
Paving _____

NOTE TO CONTRACTORS

Inspection and testing for this project is to be provided by a licensed Consulting Engineering Firm under contract with the Owner/Developer. Said inspection to be in accordance with the City of Wichita standard construction engineering practices and certified by a Licensed Professional Engineer. No work shall be performed in dedicated easements or public right-of-way by the Contractor without such inspection nor shall any work be commenced without written authorization by the City Engineer. All Construction and Materials shall comply with the City of Wichita Specifications and Standards (on file and available in the City Engineer's Office).



Scale: 1" = 20' Horizontal
1" = 5' Vertical
• = Iron



BOOKED
D-292
MG

BRENT WOOTEN
REGISTERED PROFESSIONAL ENGINEER
KANSAS
1970

As Built 7-28-94

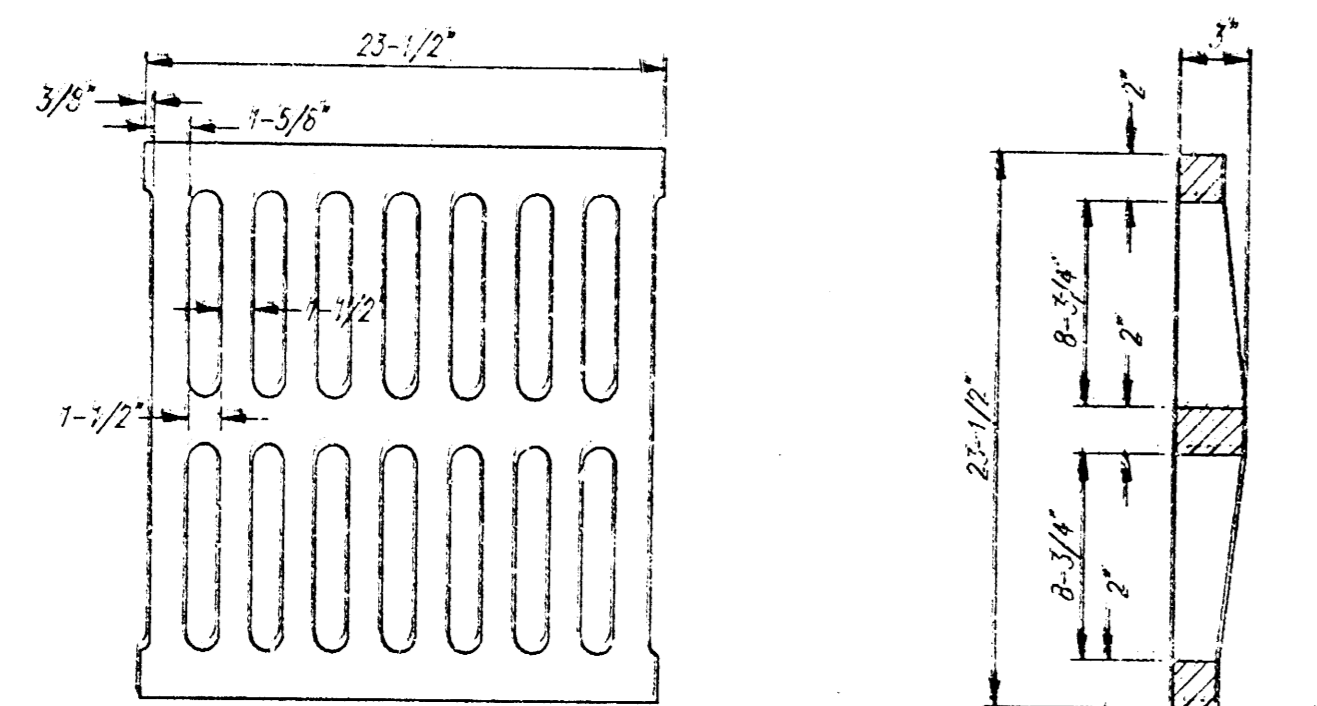
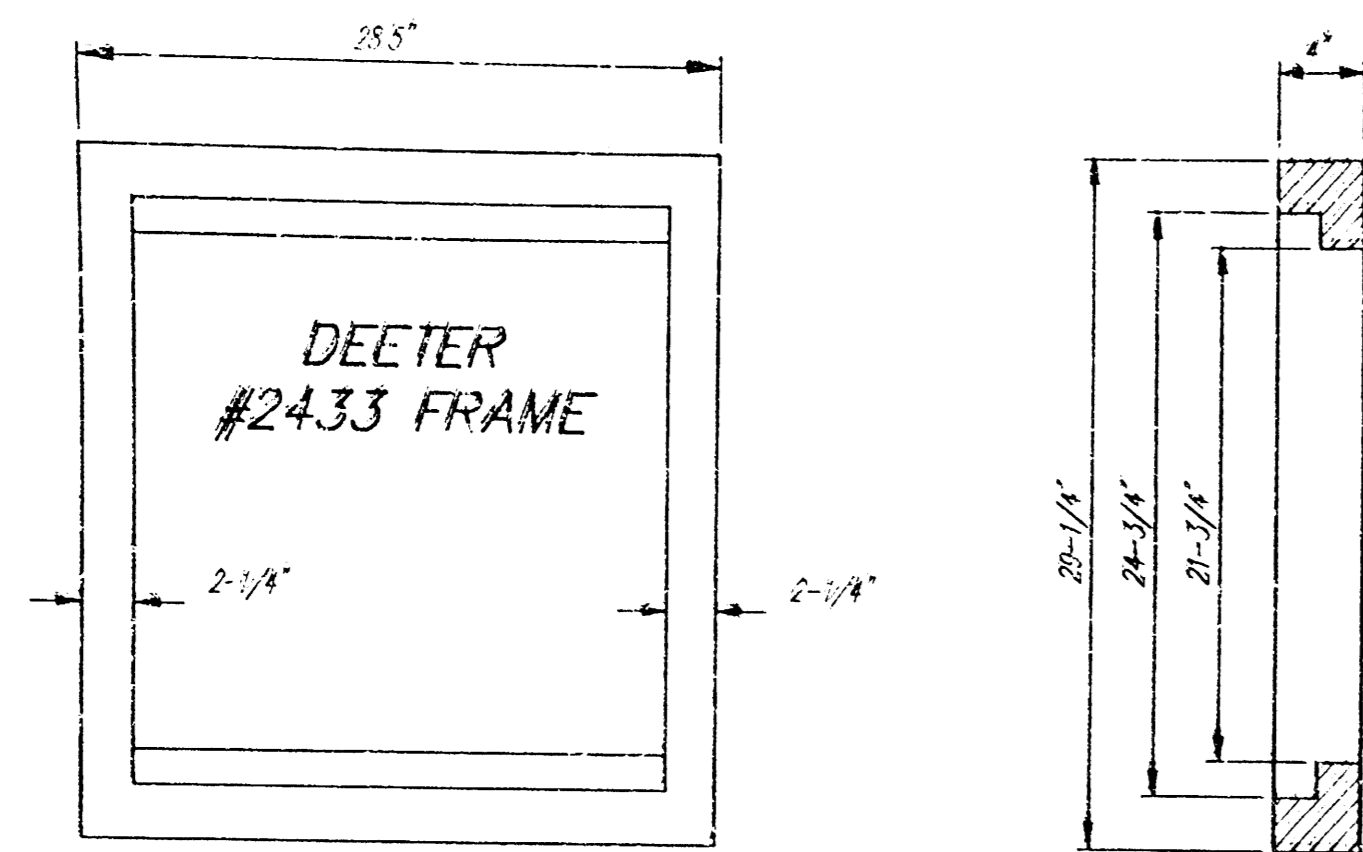
SWS IMPROVEMENTS TO SERVE
HERTZLER SATELLITE CLINIC

BAUGHMAN COMPANY F. A.
ENGINEERING & SURVEYING
316/262-7271 • 315 ELLIS • WICHITA, KANSAS 67211

PROJECT NUMBER
467 PPS (807851)

DESIGN: NGW/JES
DRAWN: JDS
UTIL. CHECKED: JDS
DATE: JUNE, 1994
SCALE: Noted

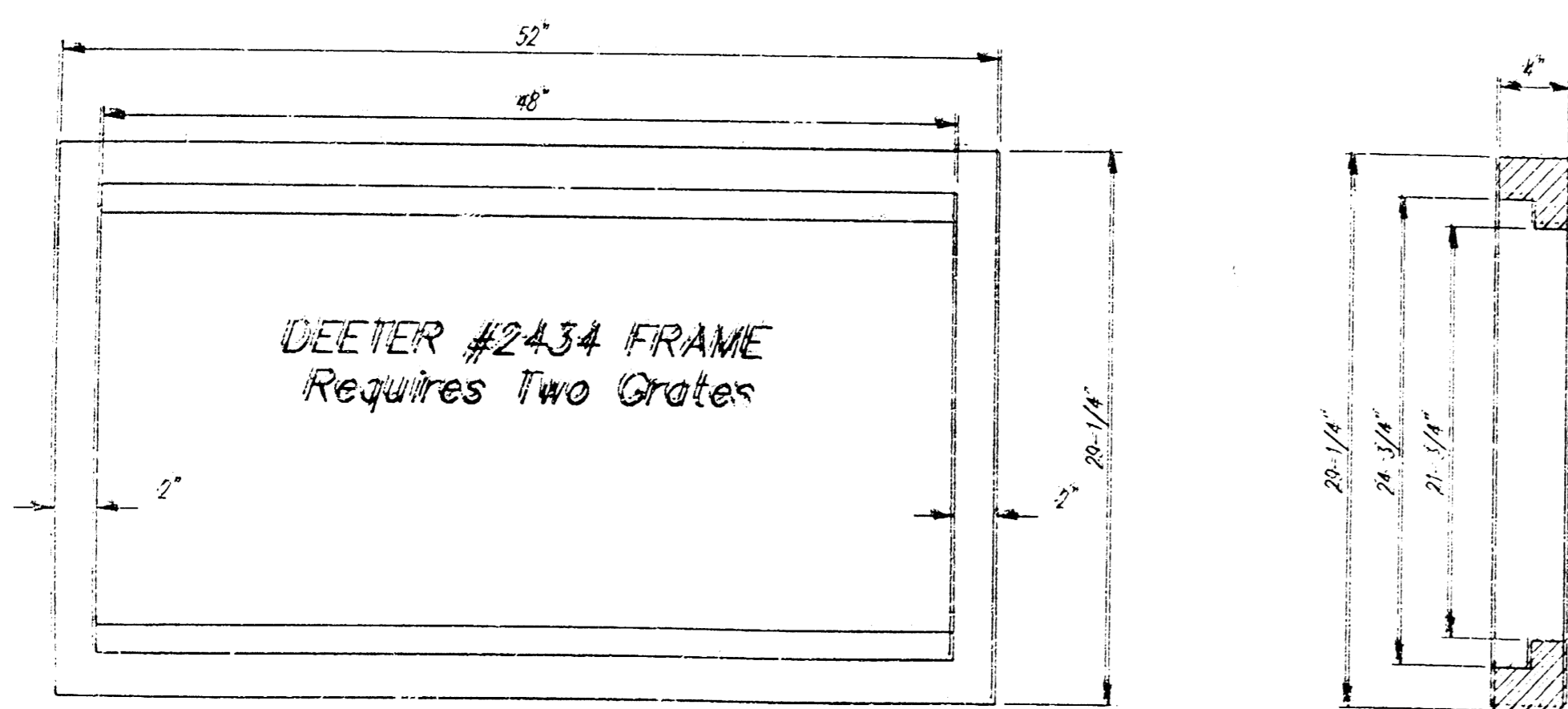
SHEET **1** OF **2**



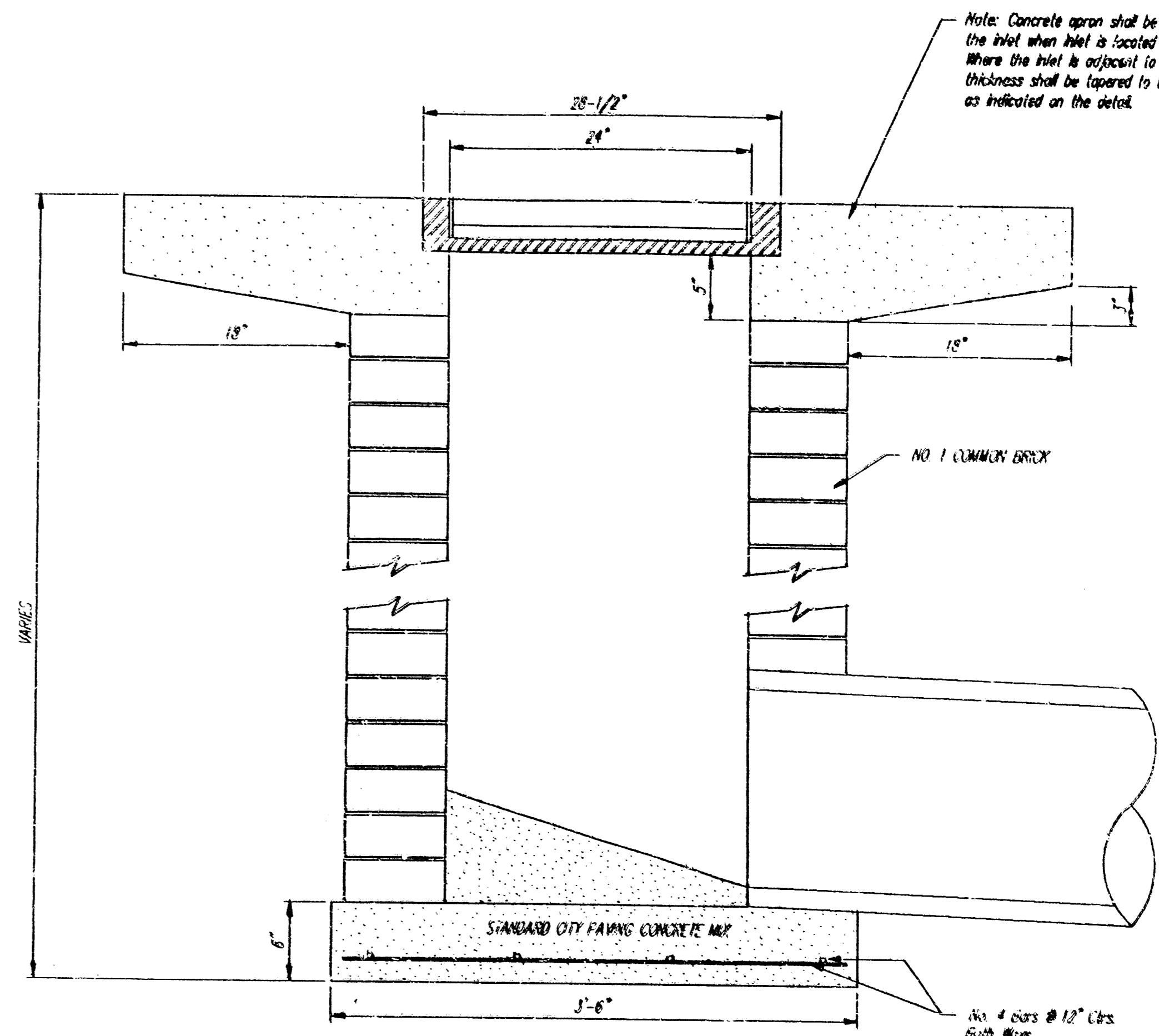
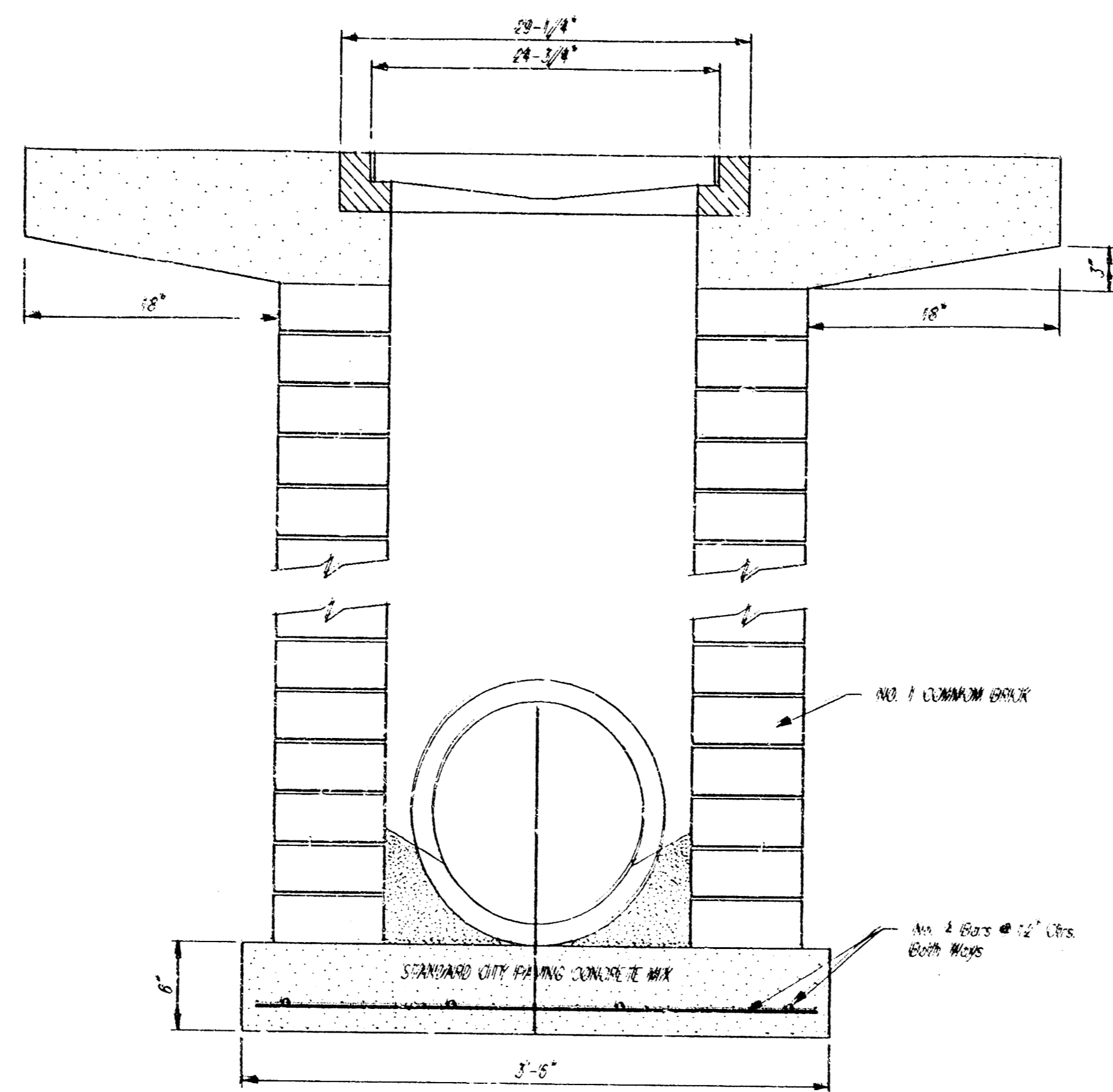
DEETER #2433 GRATE

24" x 24" Frame and Grate Detail

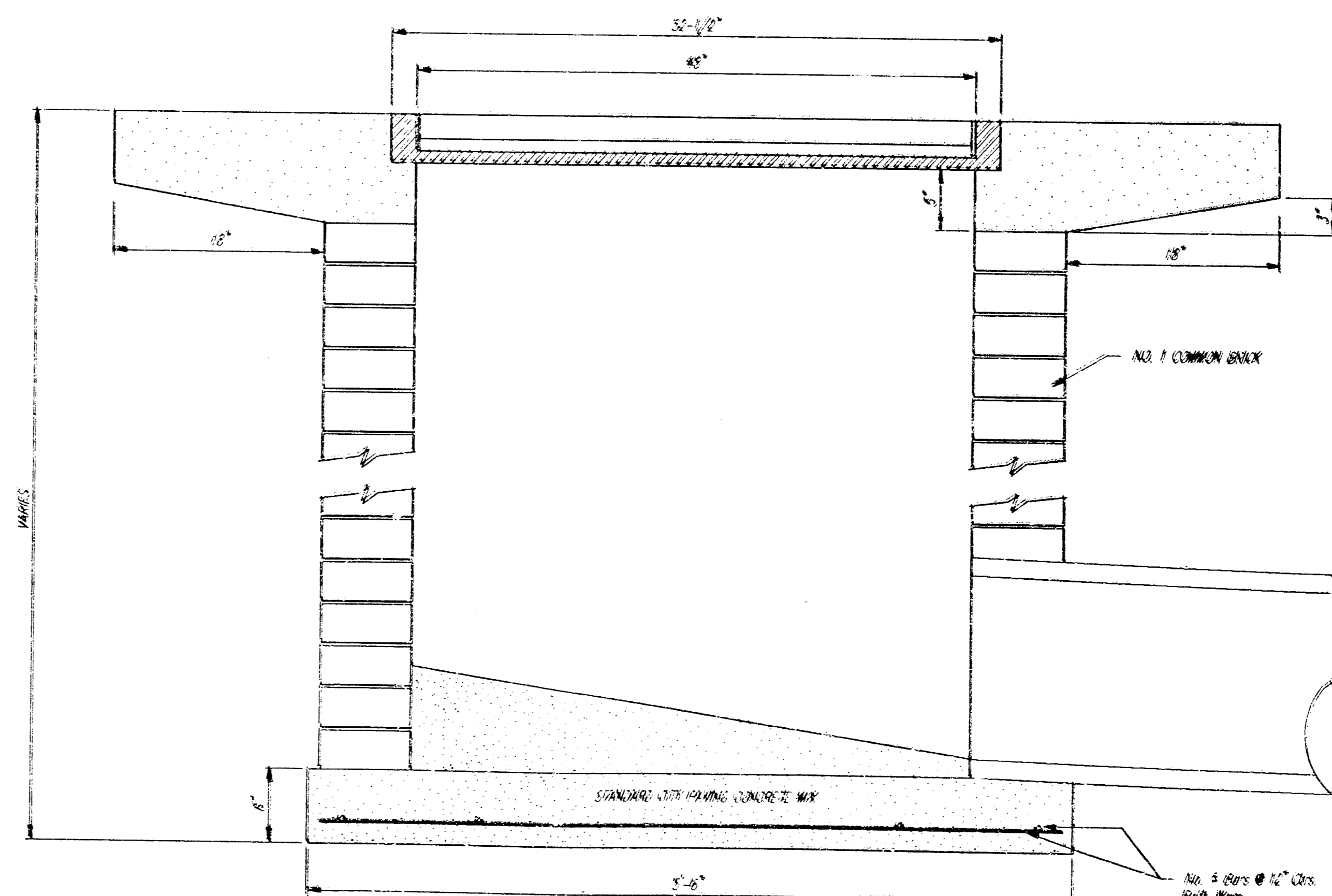
NOTE: Grates shall be imprinted on the top surface with "CITY OF WICHITA" using letters of least 1" in height. Other marking methods may be approved by the engineer.



Double 24" x 24" Frame Detail



Note: Concrete apron shall be constructed around the inlet when inlet is located in an unimproved area. Where the inlet is adjacent to pavement, the pavement thickness shall be tapered to the inlet in 12 inches as indicated on the detail.



DROP INLET DETAILS
M.E. Lindebak, City Engineer
City of Wichita, Kansas

Project Number
467 PPS (607861)

2
2