

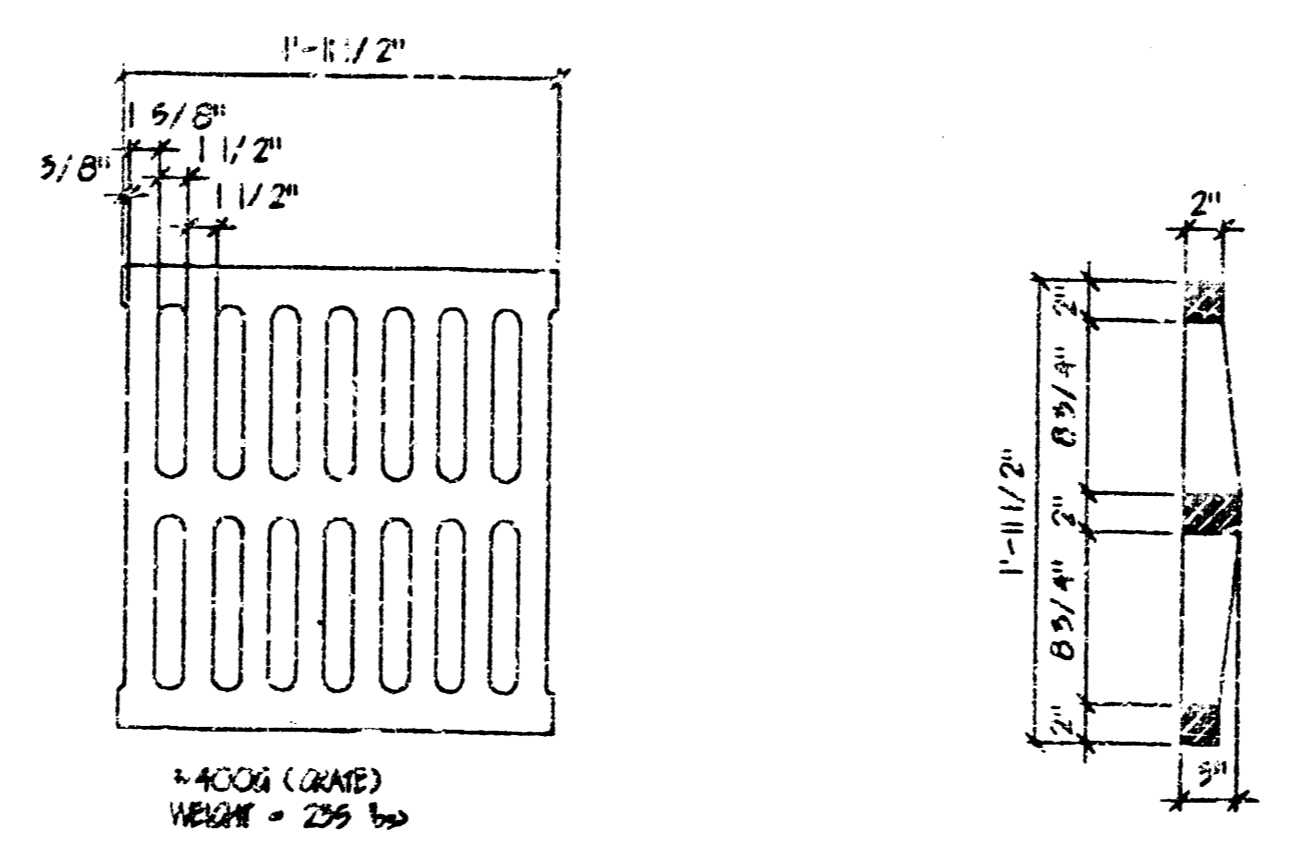
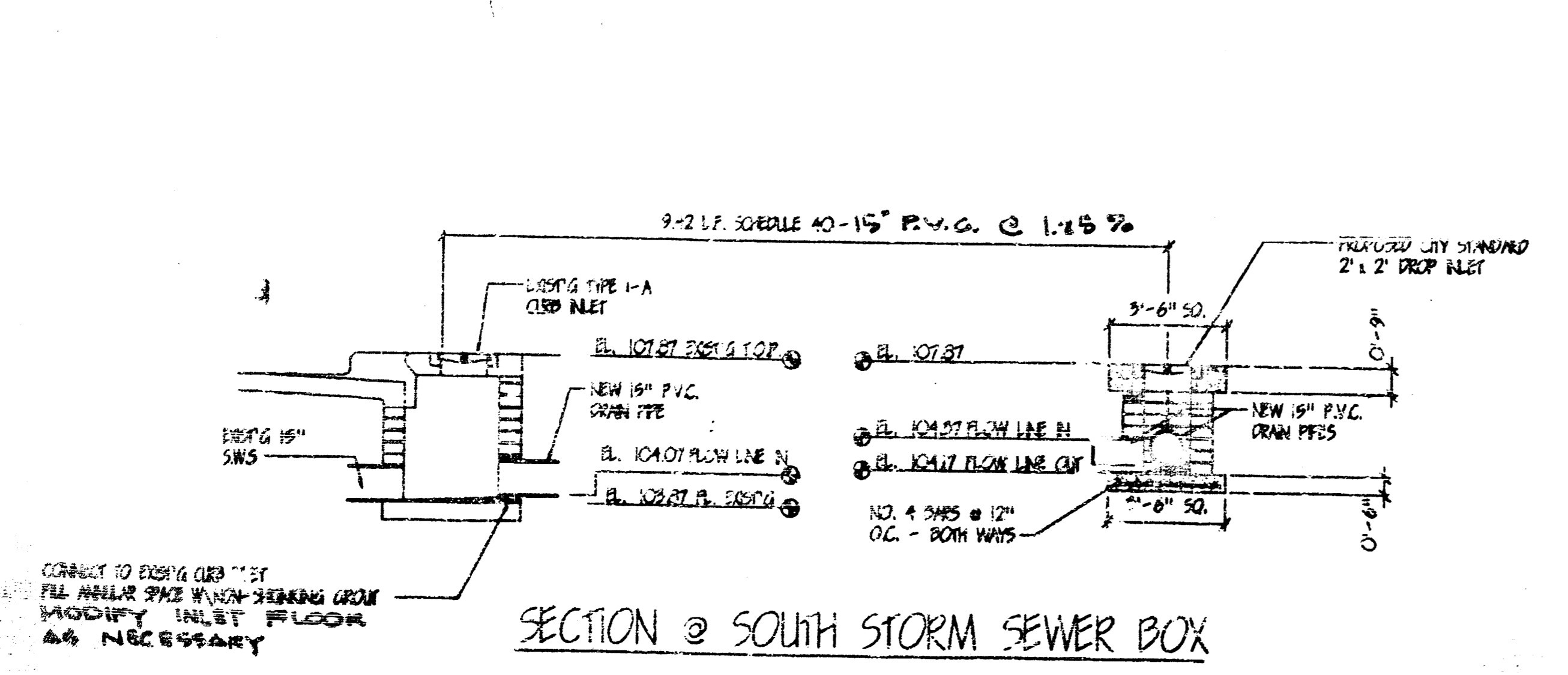
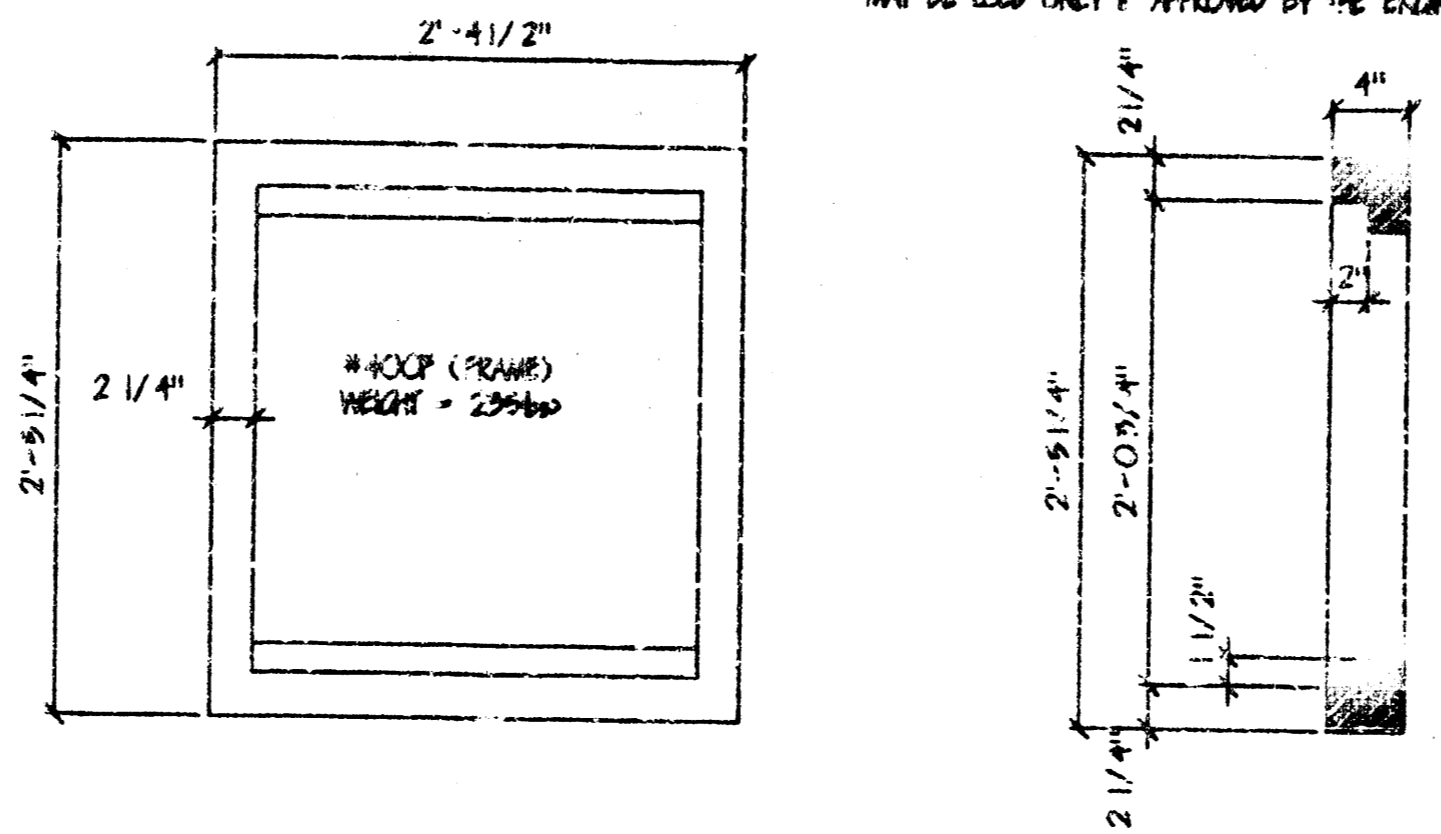
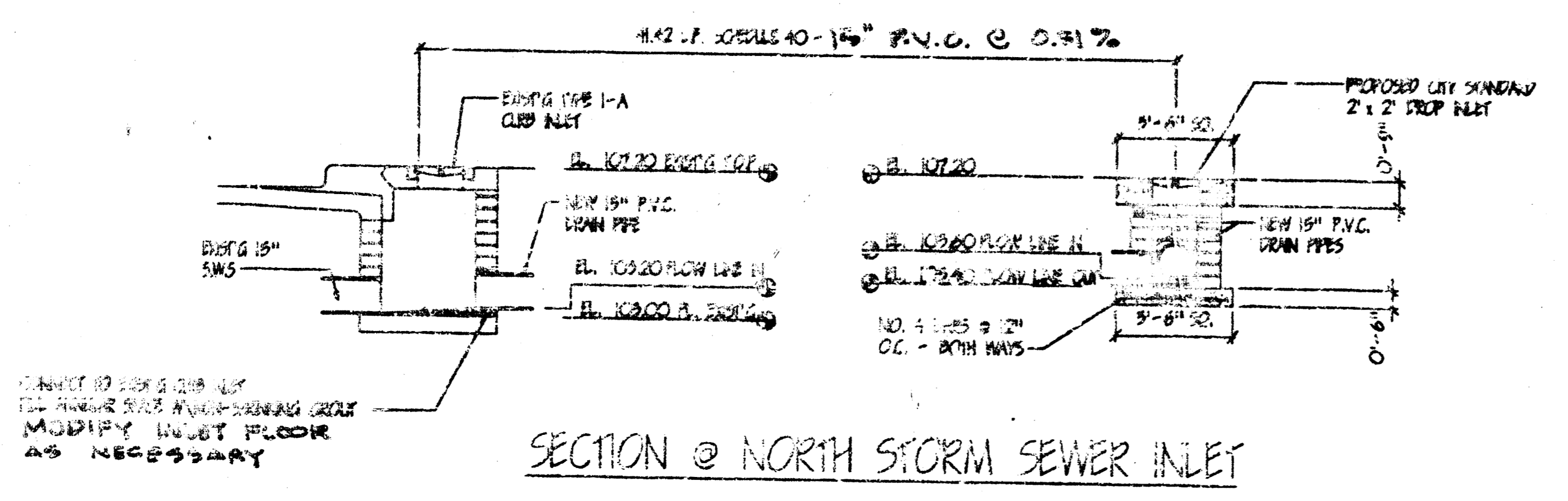
**PRIVATE STORM WATER SEWER
SERVING LOT 1, BLOCK "A", METAL-FAB ADDITION**
1" = 20'-0"

B.M. #33 60" SPIKE SET IN
S.E. FACE OF P.M. 3 S.W. CORNER
SHERIDAN & MAY BL. 107.64
FOR CITY DATUM

INSPECTION AND TESTING FOR THIS PROJECT TO BE PROVIDED BY A LICENSED CONSULTING ENGINEERING FIRM UNDER CONTRACT WITH THE OWNER/DEVELOPER. SAID INSPECTION TO BE IN ACCORDANCE WITH THE CITY OF WICHITA STANDARD CONSTRUCTION ENGINEERING PRACTICES AND CERTIFIED BY A LICENSED PROFESSIONAL ENGINEER. NO WORK SHALL BE PERFORMED IN DEDICATED EASEMENTS OR PUBLIC RIGHT-OF-WAY BY THE CONTRACTOR WITHOUT SUCH INSPECTIONS, NOR SHALL ANY WORK BE COMMENCED IN DEDICATED EASEMENTS OR PUBLIC RIGHT-OF-WAY WITHOUT WRITTEN AUTHORIZATION BY THE CITY ENGINEER.

APPROVED AS NOTED
BY CITY ENGINEER OF WICHITA

SANITARY SEWERS	_____
STORM SEWERS	VRH 7/29/94
DRIVEWAY APPROACHES	_____
WATER MAINS	_____
PAVING	_____

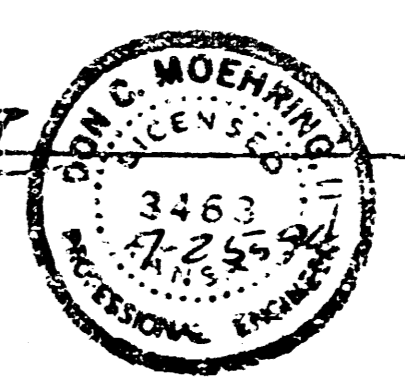


PRIVATE PROJECT NO. 484PPS (60786)



Drawings prepared under the direction of,
Don C. MOERING II - Consulting Engineer

By Don C. Moering II
S.E. ANDERSON, P.E.
DECEMBER, 1995



EVANS BUILDING CO., INC.
9801 WEST YORK
WICHITA, KANSAS 67277

METAL - FAB INC.
5000 W. 10TH ST.
WICHITA, KS 67212

PROPERTY
OWNER'S RESPONSIBILITY
CONSULTANT'S RESPONSIBILITY

E
B
C

REVISIONS
NO. DATE BY

DATE: 11/25/94

DR. BY: NM

CK. BY:

SCALE:

PROJECT
94-122

SHEET
SP-1a

OF