

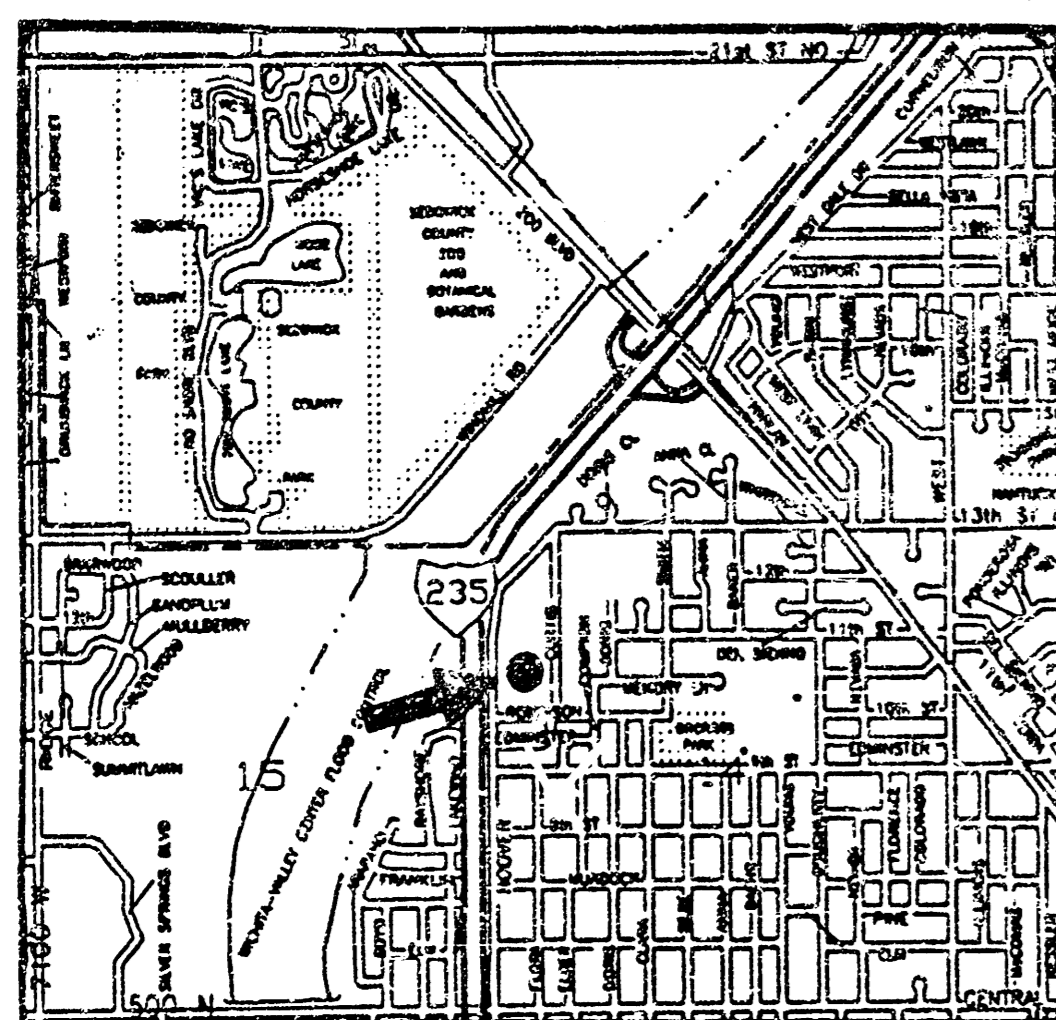
STORM DRAIN IMPROVEMENTS TO SERVE STEVE KELLEY 4TH ADDITION

Private Project Number
494 PPS (607861)

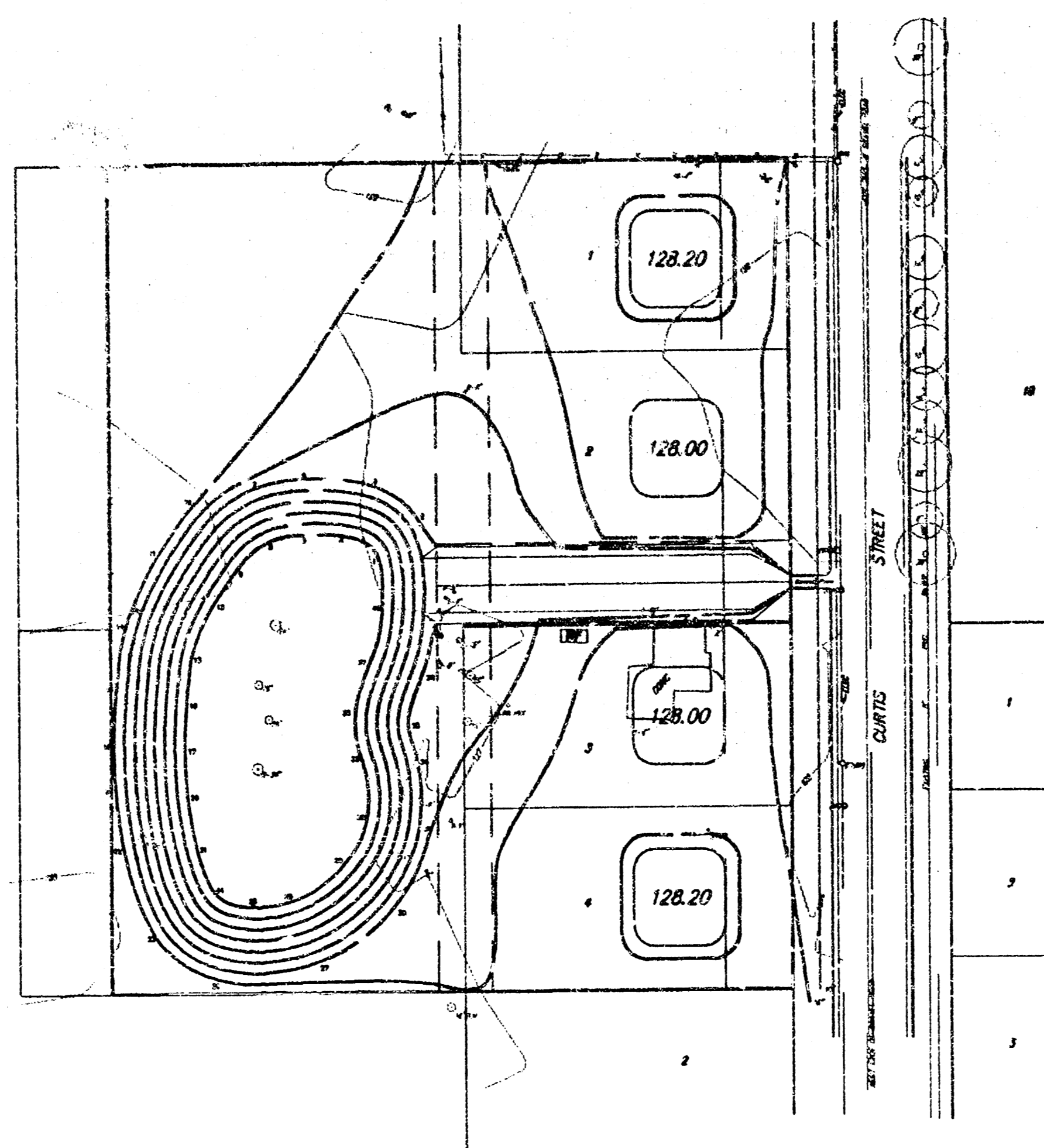
CITY OF WICHITA, KANSAS
Michael E. Lindebak, City Engineer

General Notes

1. All disturbed areas above static water level shall be seeded with Rebel Fescue at a rate of 10 pounds per 1,000 square feet, fertilized with a 15-20-5 ratio applied at a rate of 4 pounds per 1,000 square feet, and mulched at the standard rate, according to City of Wichita supplemental specifications for mulching areas seeded with grass seed.
2. Proposed minimum garage floor elevations are shown on plans. Contractor to set finished floor elevation.
3. Contour elevations shown are for graphic representation of drainage concept. Spot elevations shall take precedence over contour lines.
4. Contractor will be required to provide notice to utility companies a minimum of twenty-four (24) hours prior to any excavation, as follows:
Kansas One-Call 687-2470
5. Exist. utilities and their locations, as shown on the plans, represent the best information obtainable for design. Location information has been obtained from various utility companies and is either from company records, drawings or company-provided field locations. The Contractor will be required to work around existing utilities which do not conflict with proposed construction.
6. Rubble from removal of miscellaneous structures and excess excavation which is to be wasted shall be disposed of on sites to be provided by the Contractor. Disposal sites shall be approved by the Engineer as to suitability, appearance, and location. Locations that, in the opinion of the Engineer, will leave an unsightly appearance will not be approved.
7. Traffic affected by the construction on this project shall be handled in accordance with the latest edition of the Manual on Uniform Traffic Control Devices.



LOCATION MAP



PROJECT AREA

BENCHMARK:

R.R. Spike in north side of power pole/light on northeast corner of Curtis and Robinson.
Elevation: 128.89 City Datum

INDEX:

- 1 Title Sheet
- 2 Site Grading Plan

APPROVED AS NOTED BY CITY ENGINEER OF WICHITA	
Sanitary Sewers	_____
Storm Sewers	VRH 9/14/94
Driveway Approaches	_____
Water Mains	_____
Paving	_____
NOTE TO CONTRACTORS	
Inspection and testing for this project is to be provided by a Licensed Consulting Engineering Firm under contract with the Owner/Developer. Said inspection to be in accordance with the City of Wichita standard construction engineering practices and certified by a Licensed Professional Engineer. No work shall be performed in dedicated easements or public right-of-way by the Contractor without such inspection nor shall any work be commenced without written authorization by the City Engineer. All Construction and Materials shall comply with the City of Wichita Specifications and Standards (on file and available in the City Engineer's Office).	

Scale: 1" = 50'



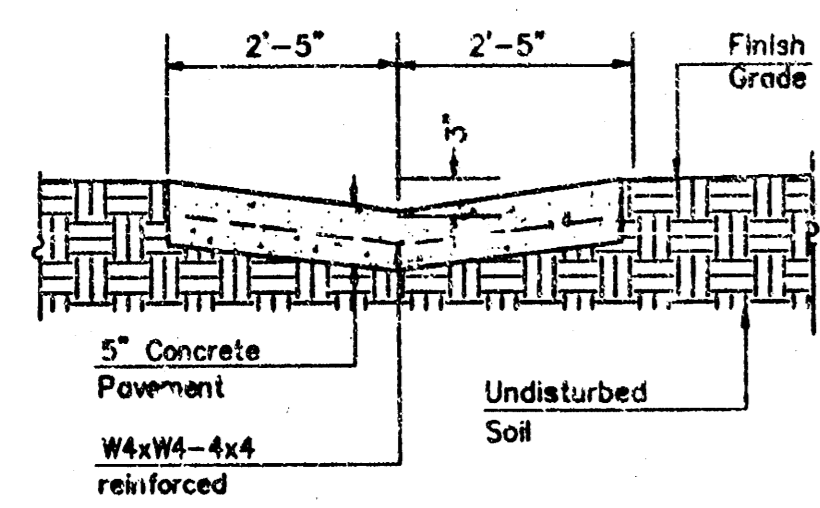
BAUGHMAN COMPANY P. A.
ENGINEERING, SURVEYING & PLANNING
316/262-7271 • 315 ELLIS • WICHITA, KANSAS 67211

Steve Kelley
2301 Cedar Crest Drive
Wichita, KS 67223
(316) 722-8579

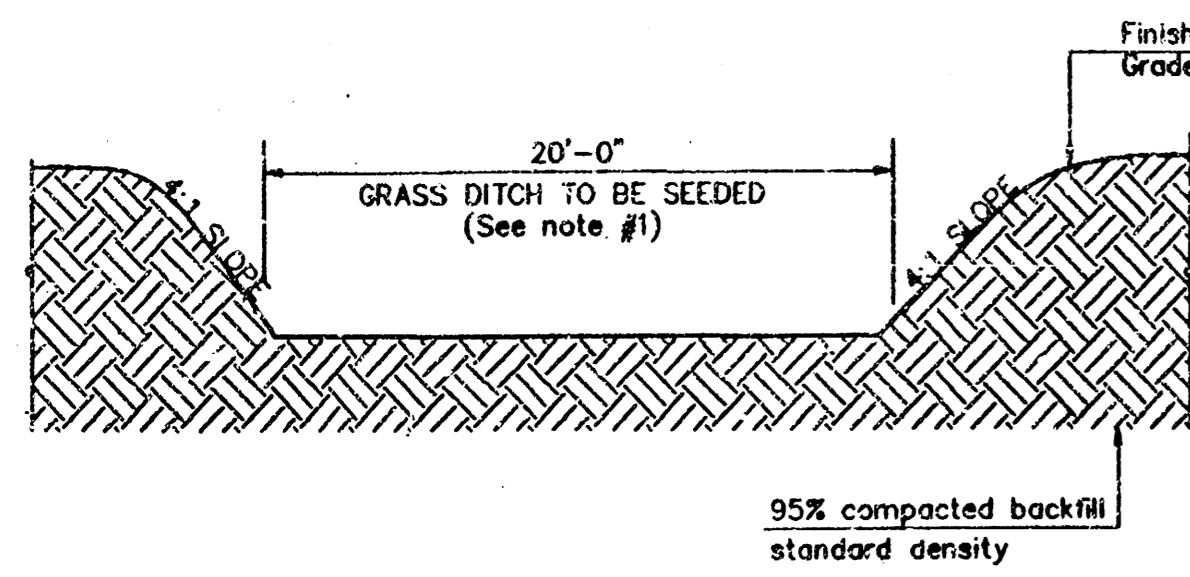
LEGAL: The South 168' of the East 270' of Lot 11,
together with the North 132' of the East
270' of Lot 12, R.A. Morris Tracts Addition,
Sedgwick County, Kansas.

SCALE:
1" = 20'
1' = CONTOUR INTERVALS

LEGEND
 □ = S.W.B. Box
 ○ = Guy Line
 ○ = Light Pole
 ○ = Power Pole
 ● = Water Meter

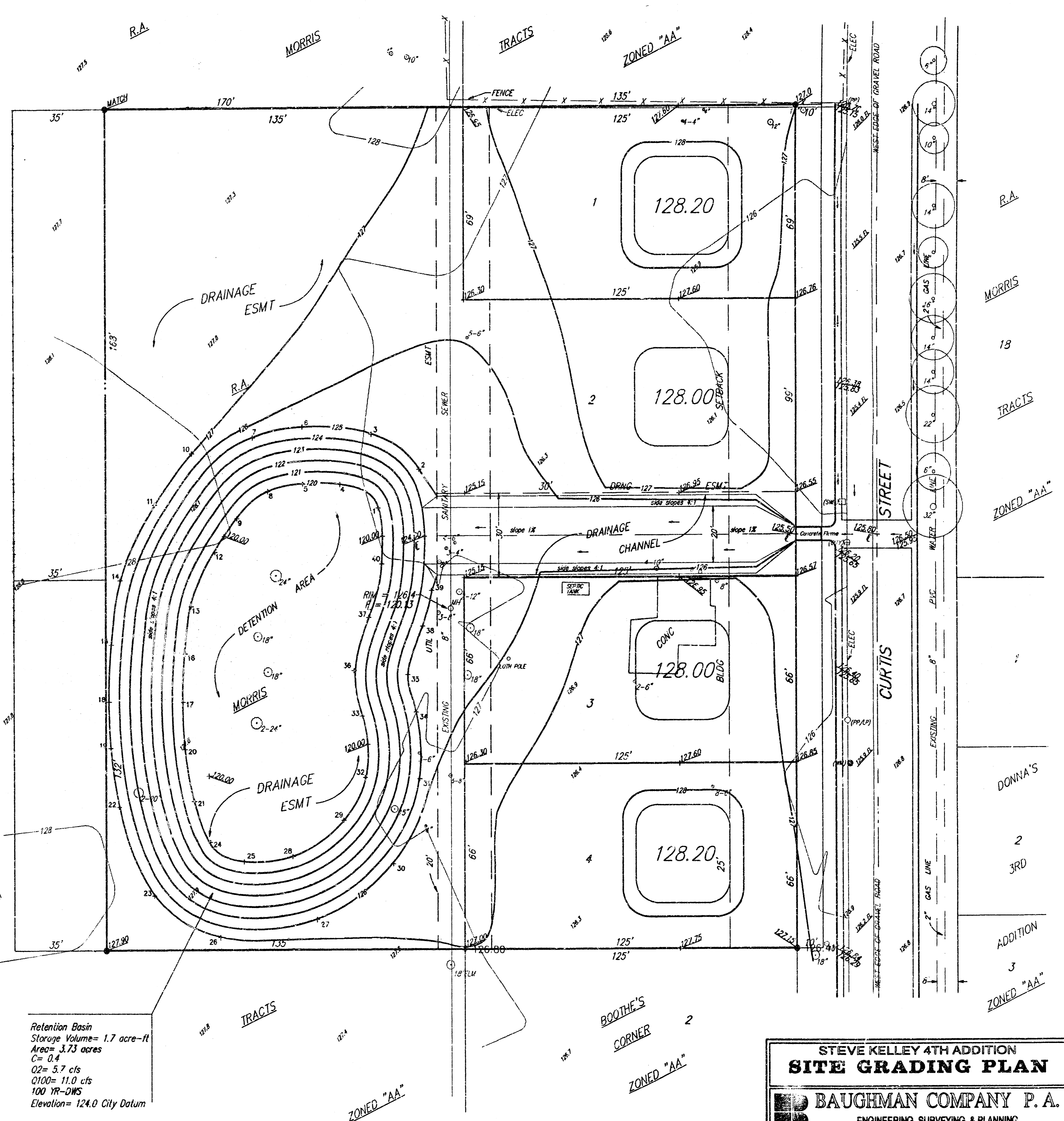


CONCRETE FLUME
NOT TO SCALE



GRASS DRAINAGE DITCH
NOT TO SCALE

PT	NORTHING	EASTING
1	5329.192	4822.886
2	5342.756	4838.456
3	5355.274	4820.254
4	5337.490	4808.251
5	5337.537	4794.585
6	5357.818	4794.397
7	5354.111	4776.066
8	5334.978	4781.781
9	5325.353	4769.943
10	5348.426	4752.872
11	5330.224	4736.836
12	5313.403	4761.667
13	5294.168	4752.615
14	5303.444	4745.599
15	5282.563	4722.205
16	5277.439	4750.332
17	5260.268	4749.353
18	5260.372	4721.353
19	5244.017	4722.076
20	5243.571	4750.246
21	5225.101	4753.695
22	5222.982	4725.327
23	5191.161	4738.315
24	5210.197	4759.708
25	5203.451	4772.611
26	5176.392	4763.583
27	5182.853	4799.645
28	5205.348	4790.728
29	5218.071	4809.485
30	5202.705	4828.315
31	5233.096	4838.399
32	5233.528	4817.667
33	5254.644	4816.957
34	5256.870	4837.139
35	5270.089	4834.067
36	5271.477	4813.565
37	5290.281	4819.319
38	5286.785	4839.444
39	5299.853	4842.992
40	5309.245	4824.156



Retention Basin
Storage Volume= 1.7 acre-ft
Area= 3.73 acres
C= 0.4
Q2= 5.7 cfs
Q100= 11.0 cfs
100 YR-OWS
Elevation= 124.0 City Datum

STEVE KELLEY 4TH ADDITION
SITE GRADING PLAN
BAUGHMAN COMPANY P.A.
ENGINEERING, SURVEYING, & PLANNING
316-262-7271 • 315 ELLIS • WICHITA, KANSAS 67211

DESIGN	DRAWN	APPROVED	DATE	SCALE
JUL	JUL	JUL	SEPT. 1994	1"=20'

PROJECT NUMBER: 494 PPS (807861) SHEET: 2 OF 2