

GENERAL NOTES:

1. THE CONTRACTOR WILL BE REQUIRED TO PROVIDE A MINIMUM ADVANCE NOTICE OF FOURTY-EIGHT (48) HOURS TO UTILITY COMPANIES PRIOR TO STARTING ANY EXCAVATION AS FOLLOWS:

KANSAS ONE-CALL 1-800-344-7233

THE CONTRACTOR MUST NOTIFY THE FOLLOWING IN CASE OF EMERGENCY:

ARKANSAS LOUISIANA GAS CO. (CAGS)	1-316-946-0096
KANSAS GAS & ELECTRIC (ELECTRIC)	1-316-261-5302
SOUTHWESTERN BELL TELEPHONE COMPANY	1-316-268-2222
CITY OF WICHITA WATER DEPARTMENT	1-316-268-4555
CITY OF WICHITA SEWER MAINTENANCE	1-316-268-4501

- THE CONTRACTOR SHALL BE RESPONSIBLE FOR PRESERVING PROPERTY IRONS. THE CONTRACTOR SHALL BE REQUIRED TO RE-ESTABLISH ANY PROPERTY IRONS WHICH ARE DAMAGED OR DESTROYED BY HIS CONSTRUCTION OPERATIONS. SUCH IRONS SHALL BE RE-ESTABLISHED BY A LICENSED LAND SURVEYOR IN ACCORDANCE WITH STATE LAWS.
- EXISTING UTILITIES AND THEIR LOCATIONS, AS SHOWN ON THE PLANS REPRESENT THE BEST INFORMATION OBTAINABLE FOR DESIGN. LOCATION INFORMATION HAS BEEN OBTAINED FROM THE VARIOUS COMPANIES AND IS EITHER FROM COMPANY UTILITY DRAWINGS OR COMPANY PROVIDED FIELD LOCATIONS. THE PLAN LOCATIONS SHOWN ARE NOT GUARANTEED. ADDITIONAL EXISTING UTILITIES MAY ALSO BE ENCOUNTERED.
- RUBBLE FROM THE REMOVAL OF MISCELLANEOUS STRUCTURES AND EXCESS EXCAVATION WHICH IS TO BE WASTED SHALL BE DISPOSED OF ON SITES TO BE PROVIDED BY THE CONTRACTOR. THESE SITES SHALL BE APPROVED BY THE ENGINEER AS TO SUITABILITY, APPEARANCE AND SITE LOCATION. LOCATIONS THAT, IN THE OPINION OF THE ENGINEER, WILL LEAVE AN UNSIGHTLY APPEARANCE WILL NOT BE APPROVED. ALL DISPOSAL SITES MUST BE APPROVED BY THE KANSAS DEPARTMENT OF HEALTH AND ENVIRONMENT. MATERIAL EITHER STOCKPILED OR DISPOSED OF IN A FLOOD PLAIN WOULD REQUIRE A KANSAS STATE BOARD OF AGRICULTURE PERMIT. ANY MATERIAL DUMPED IN WATERS OF THE UNITED STATES OR WETLANDS IS SUBJECT TO U.S. CORPS OF ENGINEERS PERMITTING REGULATIONS. ANY MATERIAL BURIED OR STOCKPILED BEYOND APPROVED CONSTRUCTION LIMITS WOULD REQUIRE ADDITIONAL ARCHEOLOGICAL INVESTIGATIONS UNLESS BURIED IN A PREVIOUSLY APPROVED BORROW LOCATION.
- UNLESS SHOWN OR STATED OTHERWISE ON THESE DRAWINGS, MATERIALS AND CONSTRUCTION SHALL BE IN ACCORDANCE WITH CITY OF WICHITA SPECIFICATIONS.
- THE TOPS OF INLETS, AS NOTED ON THE PLANS MAY VARY SO AS TO MEET PROPOSED TOP OF CURB ELEVATIONS OR PAVEMENT ELEVATIONS. THE FIELD ENGINEER SHALL LOCATE INLETS WITH REFERENCE TO PROPOSED PAVING PLANS OF THE PERTINENT STREETS.
- SITE RESTORATION AND PREPARATION SHALL BE SUBSIDIARY TO THE PROJECT.

LEGAL DESCRIPTION:

LOT 5, BLOCK A, FOUR H ADDITION, WICHITA, SEDGWICK COUNTY, KANSAS AND A PORTION OF LOT 4, BLOCK A, FOUR H ADDITION, WICHITA, SEDGWICK COUNTY, KANSAS DESCRIBED AS FOLLOWS:
 BEGINNING AT THE NORTHWEST CORNER OF SAID LOT 5, SAID POINT ALSO BEING ON THE EAST LINE OF LOT 5;
 THENCE N 00° 00' 50" W ON THE EAST LINE OF LOT 6 A DISTANCE OF 80.00 FEET TO THE NORTHEAST CORNER OF SAID LOT 6;
 THENCE N 88° 26' 00" E ON AN EXTENSION THEREOF THE NORTH LINE OF SAID LOT 6 A DISTANCE OF 144.02 FEET TO AN EXTENSION THEREOF THE EAST LINE OF SAID LOT 6;
 THENCE S 00° 00' 00" W ON SAID EAST LINE OF LOT 5 AND EXTENSION THEREOF A DISTANCE OF 280.00 FEET TO THE SOUTHEAST CORNER OF SAID LOT 5, SAID POINT ALSO BEING ON THE NORTH RIGHT-OF-WAY LINE OF CENTRAL AVENUE;
 THENCE S 88° 26' 00" W ON SAID NORTH RIGHT-OF-WAY LINE A DISTANCE OF 143.97 FEET TO THE SOUTHWEST CORNER OF SAID LOT 5;
 THENCE N 00° 00' 50" W ON SAID EAST LINE OF LOT 6 A DISTANCE OF 200.00 FEET TO THE POINT OF BEGINNING.
 TOTAL TRACT CONTAINS 40,286.42 S.F. OR 0.92 ACRES.
 SUBJECT TO EASEMENTS, RESERVATIONS AND RESTRICTIONS NOW OF RECORD.
 END DESCRIPTION

CONTACT PERSONS:

SAMUEL D. MALINOWSKY, P.E., KAW VALLEY ENGINEERING, INC 913-762-5040
 LEON D. OSBOURN, P.E., KAW VALLEY ENGINEERING, INC. 913-762-5040

STORM SEWER PLANS TO SERVE 8900 WEST CENTRAL PRIVATE PROJECT NO. 497PPS (607861)

CITY OF WICHITA
SEDGWICK COUNTY, KANSAS
SEPTEMBER 8, 1994

APPROVED AS NOTED

BY CITY ENGINEER OF WICHITA

SANITARY SEWERS

STORM SEWERS

PAVING

VRH 9/19/94

NOTE TO CONTRACTOR

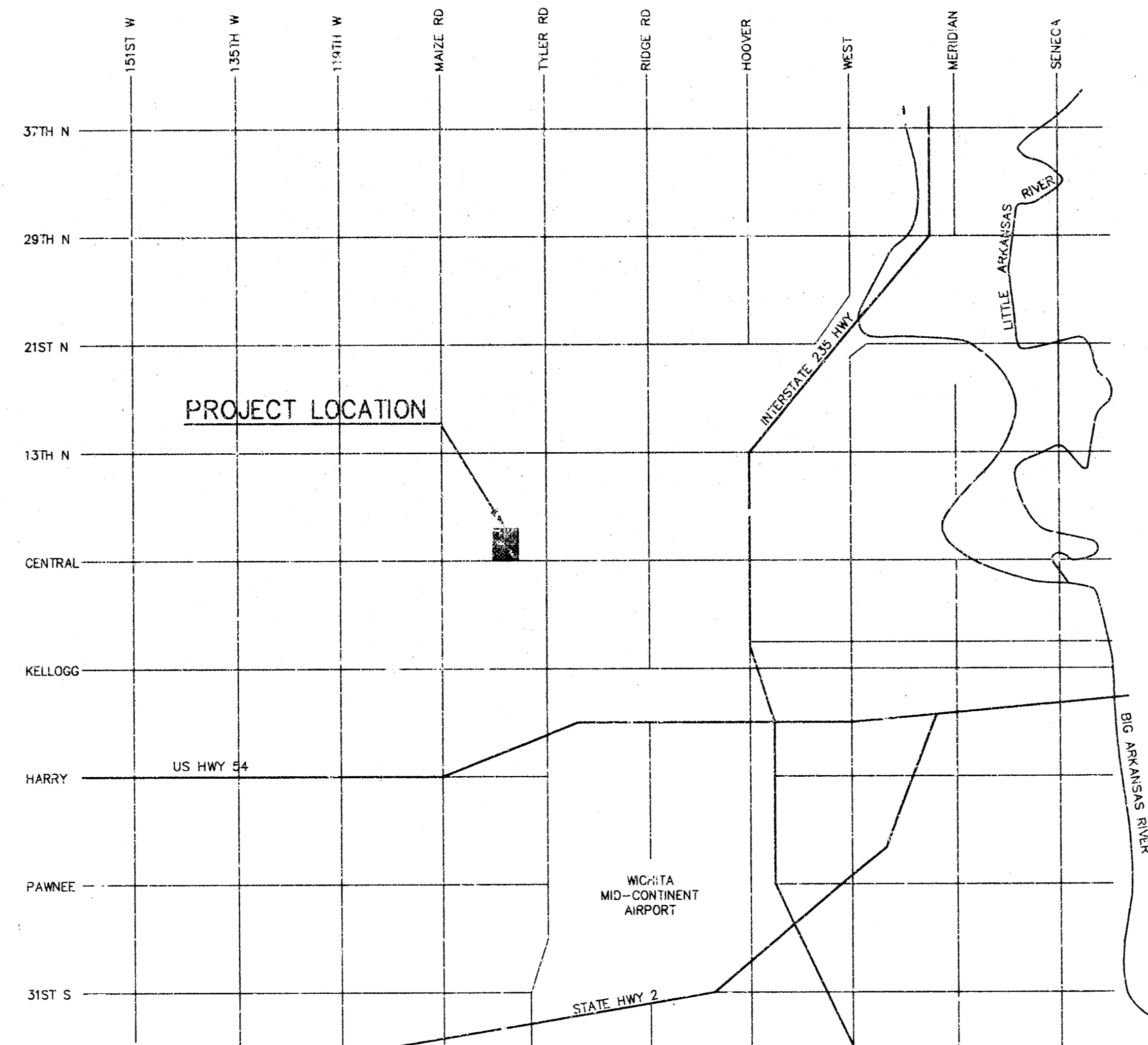
INSPECTION AND TESTING FOR THIS PROJECT IS TO BE PROVIDED BY A LICENSED CONSULTING ENGINEERING FIRM UNDER CONTRACT WITH THE OWNER / DEVELOPER. SAID INSPECTION TO BE IN ACCORDANCE WITH THE CITY OF WICHITA STANDARD CONSTRUCTION ENGINEERING PRACTICES AND CERTIFIED BY A LICENSED PROFESSIONAL ENGINEER. NO WORK SHALL BE PERFORMED IN DEDICATED EASEMENTS OR THE PUBLIC RIGHT-OF-WAY BY THE CONTRACTOR WITHOUT SUCH INSPECTION NOR SHALL ANY WORK BE COMMENCED IN DEDICATED EASEMENTS OR PUBLIC RIGHT-OF-WAY WITHOUT WRITTEN AUTHORIZATION BY THE CITY ENGINEER.

INDEX TO SHEETS:

- TITLE SHEET
- STORM SEWER PLAN AND PROFILES

BENCHMARKS:

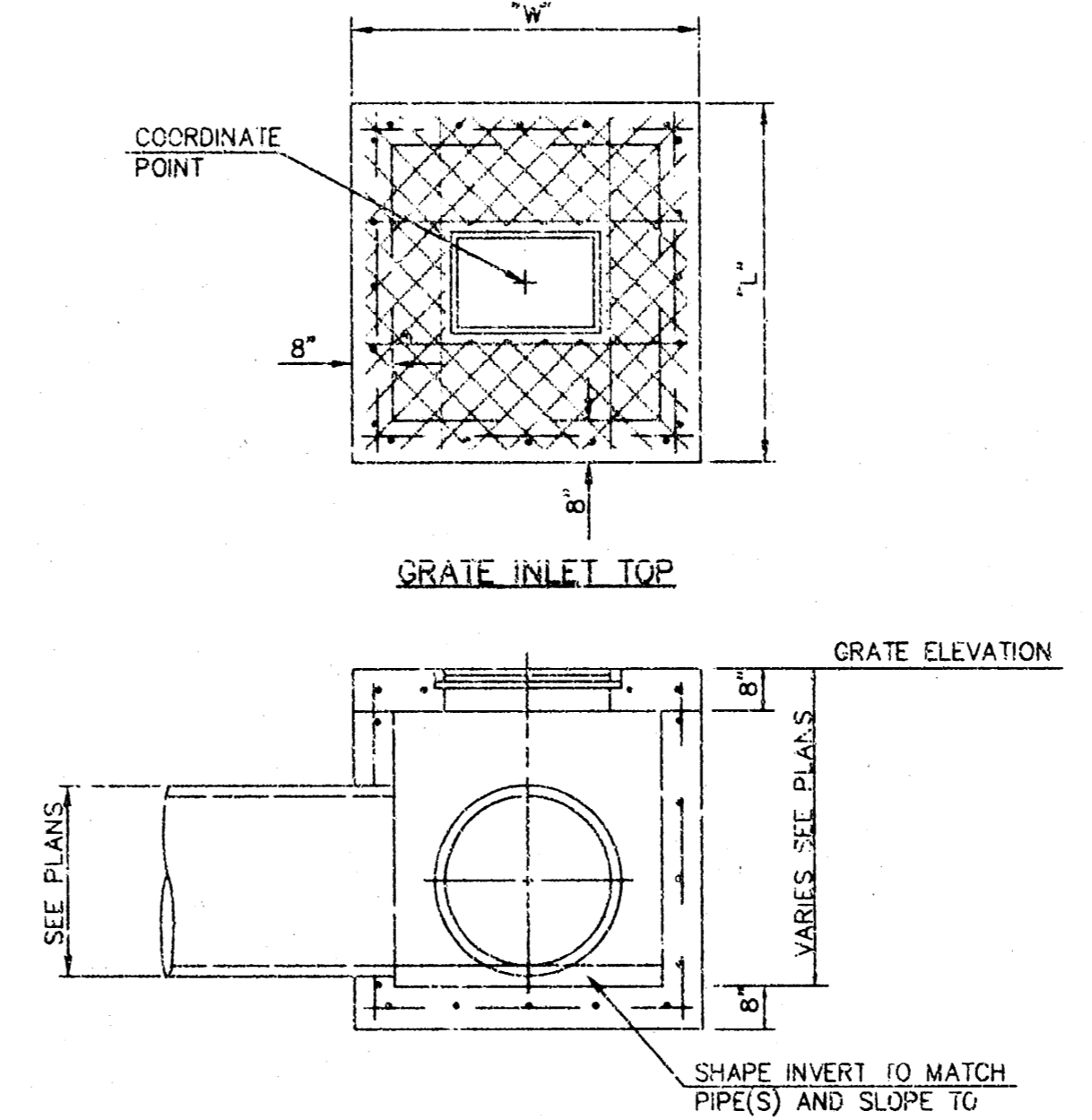
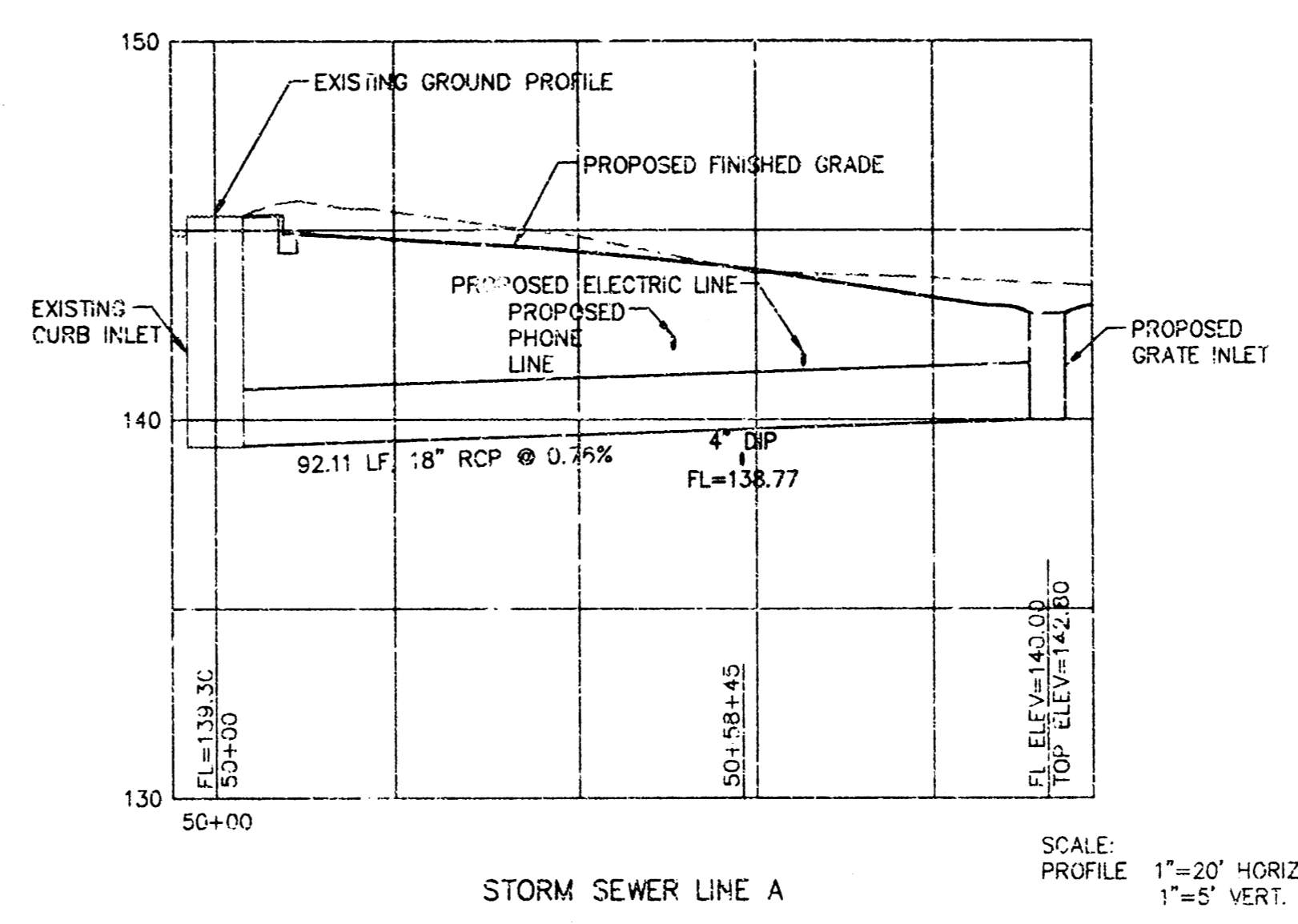
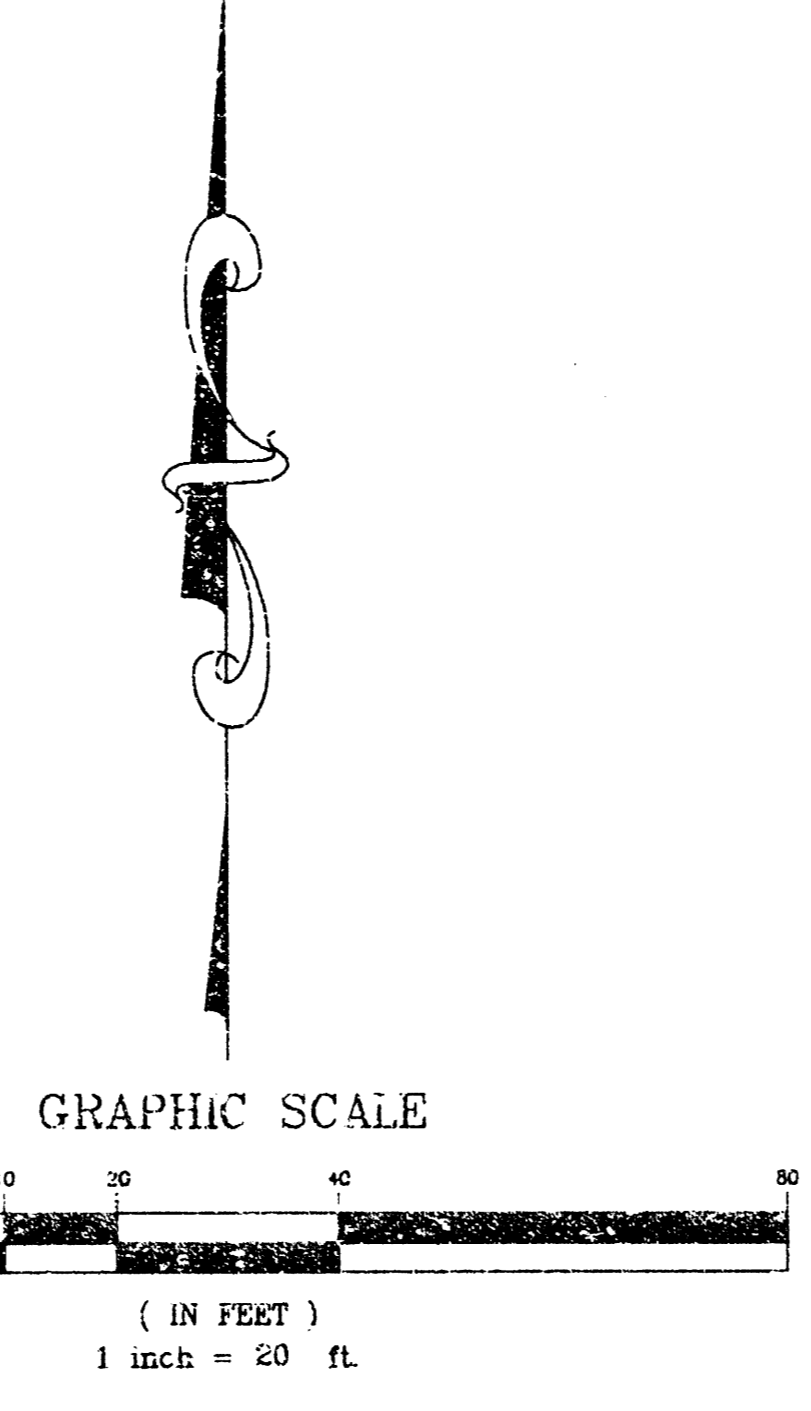
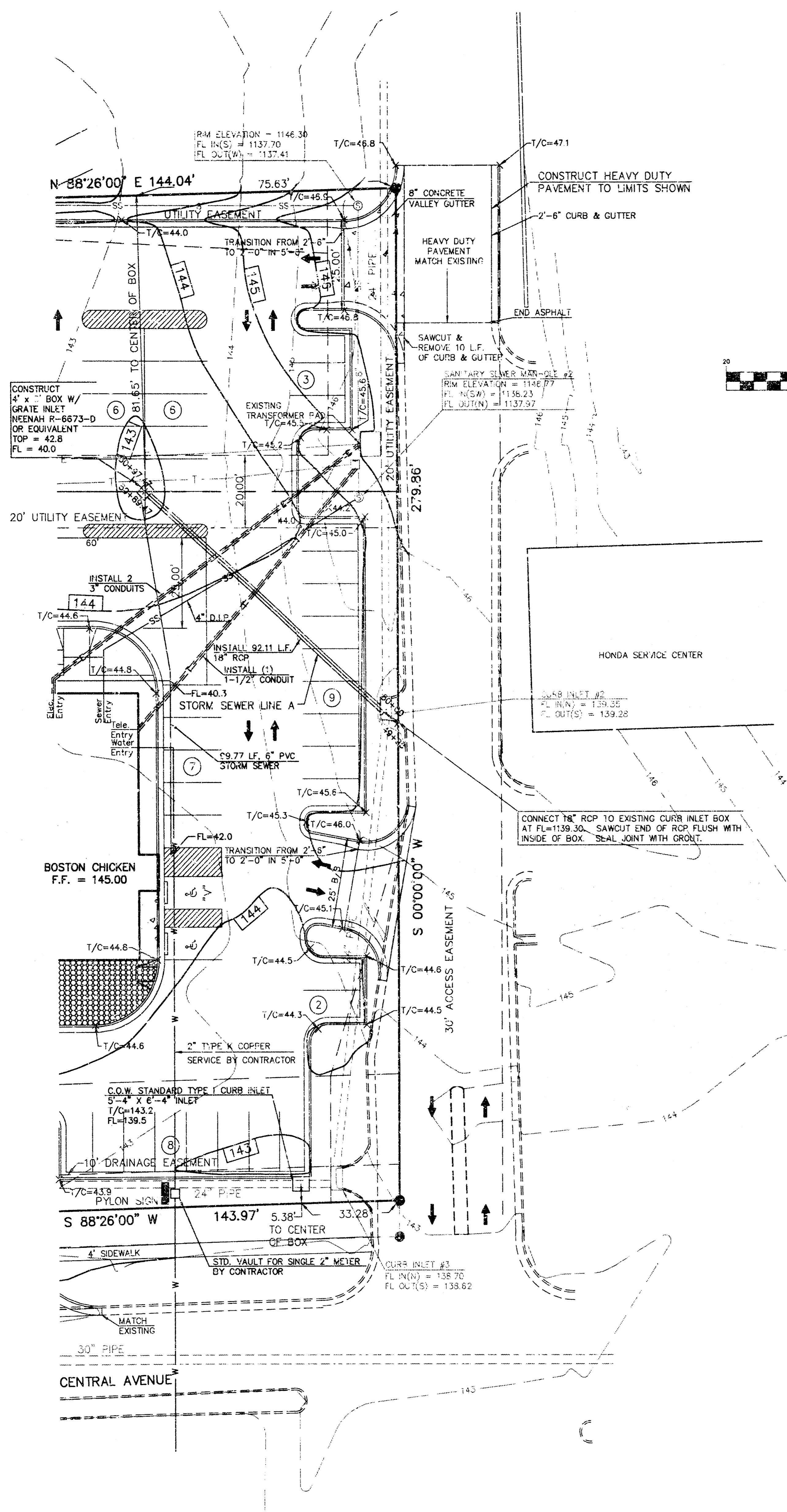
ALUM. CAP STAMPED CITY OF WICHITA BENCHMARK. NW COR. INTERSECTION TYLER AND CENTRAL 56.2' NORTH AND 38' WEST OF CTR. LINE BOTH. 5' WEST OF CURB AND 5' NORTH OF CURB.
 JFG 1976 ELEV.=143.903



VICINITY MAP
NO SCALE

SAMUEL D. MALINOWSKY
PROFESSIONAL ENGINEER

2	9-19-94	REVISED PER C.O.W.	JT
1	9-16-94	REVISED PER C.O.W.	JT
NO.	DATE	REVISION	BY
TITLE SHEET - STORM SEWER PLANS			
P.O. BOX 1304 2319 NORTH - OKSON JUNCTION CITY, KANSAS (913)762-5040 FAX 913-762-7744		122 N.W. PARKWAY RIVERSIDE, MISSOURI 64150 (816)587-6523 FAX 816-587-0120 15965111	
KAW VALLEY ENGINEERING, INC		DESIGNER	SDM
		DRAWN BY	JT
		CHECKED BY	CFN
		DATE	15965111
		SHEET	1 OF 2



REINFORCEMENT: #5 REBAR @ 12" CENTERS BOTH WAYS IN WALLS AND FLOOR AND 6" CENTERS BOTH WAYS IN TOP.
 ALL CONCRETE: 1" C = 4000 P.S.I.
 NOTE: WHERE PIPE SIZE ALLOWS, A 4" DIAMETER PRECAST MANHOLE, CONSTRUCTED AND REINFORCED IN ACCORDANCE WITH ANSI/ASTM C478, MAY BE USED IN LIEU OF CAST IN PLACE BOX. ALTERNATE MATERIALS AND CONSTRUCTION METHODS MAY BE USED WITH THE ENGINEER'S APPROVAL.
 CASTING NUMBERS ARE NEENAH FOUNDRY. EQUAL SUBSTITUTIONS ARE PERMITTED.
 GRATE - R-6673-J
 UNLESS OTHERWISE NOTED ON SITE GRADING PLAN

WARRANTY / DISCLAIMER
 THE DESIGNS REPRESENTED IN THESE PLANS ARE IN ACCORDANCE WITH ESTABLISHED PRACTICES OF CIVIL ENGINEERING FOR THE DESIGN FUNCTIONS AND USES INTENDED BY BOSTON CHICKEN INC. AT THIS TIME, HOWEVER, NEITHER KAW VALLEY ENGINEERING, INC NOR ITS PERSONNEL CAN OR DO WARRANT THESE DESIGNS OR PLANS AS CONSTRUCTED, EXCEPT IN THE SPECIFIC CASES WHERE KAW VALLEY ENGINEERING PERSONNEL INSPECT AND CONTROL THE PHYSICAL CONSTRUCTION ON A CONTEMPORARY BASIS AT THE SITE.
CAUTION - NOTICE TO CONTRACTOR
 THE CONTRACTOR IS SPECIFICALLY CAUTIONED THAT THE LOCATION AND/OR ELEVATION OF EXISTING UTILITIES AS SHOWN ON THESE PLANS IS BASED ON RECORDS OF THE VARIOUS UTILITY COMPANIES AND, WHERE POSSIBLE, MEASUREMENTS TAKEN IN THE FIELD. THE INFORMATION IS NOT TO BE RELIED ON AS BEING EXACT OR COMPLETE. THE CONTRACTOR MUST CALL THE APPROPRIATE UTILITY COMPANY AT LEAST 48 HOURS BEFORE ANY EXCAVATION TO REQUEST EXACT FIELD LOCATION OF UTILITIES. IT SHALL BE THE RESPONSIBILITY OF THE CONTRACTOR TO RELOCATE ALL EXISTING UTILITIES WHICH CONFLICT WITH PROPOSED IMPROVEMENTS SHOWN ON THE PLANS. THE CONTRACTOR SHALL EXPOSE EXISTING UTILITIES AT LOCATIONS OF POSSIBLE CONFLICTS PRIOR TO ANY CONSTRUCTION OF NEW UTILITIES.
SAFETY NOTICE TO CONTRACTOR
 IN ACCORDANCE WITH GENERALLY ACCEPTED CONSTRUCTION PRACTICES, THE CONTRACTOR WILL BE SOLELY AND COMPLETELY RESPONSIBLE FOR CONDITIONS OF THE JOB SITE, INCLUDING SAFETY OF ALL PERSONS AND PROPERTY DURING PERFORMANCE OF THE WORK. THIS REQUIREMENT WILL APPLY CONTINUOUSLY AND NOT BE LIMITED TO NORMAL WORKING HOURS.

GRATE INLET

BENCHMARK: ALUM. CAP STAMPED CITY OF WICHITA BENCHMARK, NW COR. INTERSECTION TYLER AND CENTRAL, 56.2' NORTH AND 36' WEST OF CTR. LINE, BOTH 5' WEST OF CURB AND 5' NORTH OF CURB. ELEV.=143.903
 T/C & SPOT ELEVATIONS ARE CITY DATUM -100

NO.	DATE	REVISION	BY
2	9-19-94	REVISED PER C.O.W.	JT
1	8-16-94	REVISED PER C.O.W.	JT
		REVISION	BY

STORM SEWER PLAN & PROFILES

P.O. BOX 1304 2316 NORTH JACKSON JUNCTION CITY, KANSAS (913)762-5040 FAX 913-762-7744	KAW VALLEY ENGINEERING, INC	122 N.W. PARKWAY RIVERSIDE, MISSOURI 64150 (816)587-5033 FAX 816-587-0125	PROJ. NO. 94-1596 DATE: SEPT. 8, 1994 DESIGNER: SOM DRAWN BY: JT CHECKED BY: CFN 1596PROF SHEET 2 OF 2
---	--	---	--