

GENERAL NOTES:

- THE CONTRACTOR WILL BE REQUIRED TO PROVIDE A MINIMUM ADVANCE NOTICE OF FOURTY-EIGHT (48) HOURS TO UTILITY COMPANIES PRIOR TO STARTING ANY EXCAVATION AS FOLLOWS:  
 KANSAS ONE-CALL 1-800-344-7233  
 THE CONTRACTOR MUST NOTIFY THE FOLLOWING IN CASE OF EMERGENCY:  
 KANSAS GAS & ELECTRIC 1-316-261-6734  
 SOUTHWESTERN BELL TELEPHONE COMPANY 1-316-268-2222  
 CITY OF WICHITA WATER DEPARTMENT 1-316-268-4555  
 CITY OF WICHITA SEWER MAINTENANCE 1-316-268-4501
- THE CONTRACTOR SHALL BE RESPONSIBLE FOR PRESERVING PROPERTY IRONS. THE CONTRACTOR SHALL BE REQUIRED TO RE-ESTABLISH ANY PROPERTY IRONS WHICH ARE DAMAGED OR DESTROYED BY HIS CONSTRUCTION OPERATIONS. SUCH IRONS SHALL BE RE-ESTABLISHED BY A LICENSED LAND SURVEYOR IN ACCORDANCE WITH STATE LAWS.
- EXISTING UTILITIES AND THEIR LOCATIONS, AS SHOWN ON THE PLANS REPRESENT THE BEST INFORMATION OBTAINABLE FOR DESIGN. LOCATION INFORMATION HAS BEEN OBTAINED FROM THE VARIOUS COMPANIES AND IS EITHER FROM COMPANY UTILITY DRAWINGS OR COMPANY PROVIDED FIELD LOCATIONS. THE PLAN LOCATIONS SHOWN ARE NOT GUARANTEED. ADDITIONAL EXISTING UTILITIES MAY ALSO BE ENCOUNTERED.
- RUBBLE FROM THE REMOVAL OF MISCELLANEOUS STRUCTURES AND EXCESS EXCAVATION WHICH IS TO BE WASTED SHALL BE DISPOSED OF ON SITES TO BE PROVIDED BY THE CONTRACTOR. THESE SITES SHALL BE APPROVED BY THE ENGINEER AS TO SUITABILITY, APPEARANCE AND SITE LOCATION. LOCATIONS THAT, IN THE OPINION OF THE ENGINEER, WILL LEAVE AN UNSIGHTLY APPEARANCE WILL NOT BE APPROVED. ALL DISPOSAL SITES MUST BE APPROVED BY THE KANSAS DEPARTMENT OF HEALTH AND ENVIRONMENT. MATERIAL EITHER STOCKPILED OR DISPOSED OF IN A FLOOD PLAIN WOULD REQUIRE A KANSAS STATE BOARD OF AGRICULTURE PERMIT. ANY MATERIAL DUMPED IN WATERS OF THE UNITED STATES OR WETLANDS IS SUBJECT TO U.S. CORPUS OF ENGINEERS PERMITTING REGULATIONS. ANY MATERIAL BURIED OR STOCKPILED BEYOND APPROVED CONSTRUCTION LIMITS WOULD REQUIRE ADDITIONAL ARCHEOLOGICAL INVESTIGATIONS UNLESS BURIED IN A PREVIOUSLY APPROVED BORROW LOCATION.
- UNLESS SHOWN OR STATED OTHERWISE ON THESE DRAWINGS, MATERIALS AND CONSTRUCTION SHALL BE IN ACCORDANCE WITH CITY OF WICHITA SPECIFICATIONS.
- SITE RESTORATION AND PREPARATION SHALL BE SUBSIDIARY TO THE PROJECT.

# STORM SEWER PLANS TO SERVE LOT 5, BLOCK 1, NORTHROCK CROSSING

PRIVATE PROJECT NO. 499PPS (607861)

CITY OF WICHITA  
SEDGWICK COUNTY, KANSAS  
SEPTEMBER 20, 1994

APPROVED AS NOTED  
BY CITY ENGINEER OF WICHITA

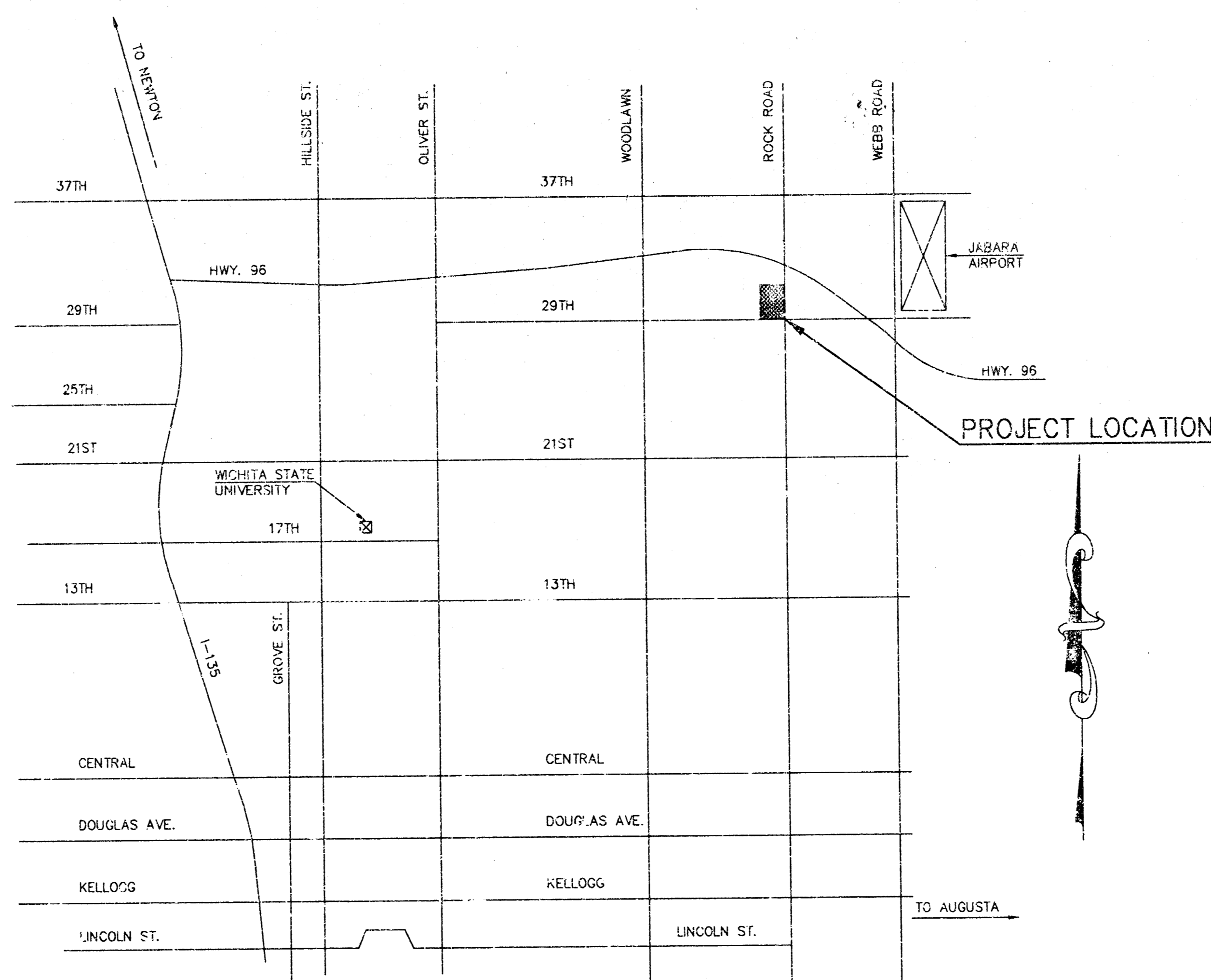
STORM SEWERS VRH 10/3/94

NOTE TO CONTRACTOR

INSPECTION AND TESTING FOR THIS PROJECT IS TO BE PROVIDED BY A LICENSED CONSULTING ENGINEERING FIRM UNDER CONTRACT WITH THE OWNER / DEVELOPER. SAID INSPECTION TO BE IN ACCORDANCE WITH THE CITY OF WICHITA STANDARD CONSTRUCTION ENGINEERING PRACTICES AND CERTIFIED BY A LICENSED PROFESSIONAL ENGINEER. NO WORK SHALL BE PERFORMED IN DEDICATED EASEMENTS OR THE PUBLIC RIGHT-OF-WAY BY THE CONTRACTOR WITHOUT SUCH INSPECTION NOR SHALL ANY WORK BE COMMENCED IN DEDICATED EASEMENTS OR PUBLIC RIGHT-OF-WAY WITHOUT WRITTEN AUTHORIZATION BY THE CITY ENGINEER.

INDEX TO SHEETS:

- TITLE SHEET
- STORM SEWER PLAN
- C.O.W. TYPE 1A INLET DETAIL



VICINITY MAP  
NO SCALE

CONTACT PERSONS:

SAMUEL D. MALINOWSKY, P.E., KAW VALLEY ENGINEERING, INC. 913-762-5040  
 LEON D. OSBOURN, P.E., KAW VALLEY ENGINEERING, INC. 913-762-5040

BENCHMARKS:

BRASS DISC ON TRAFFIC SIGNAL POLE AT THE SOUTHEAST CORNER OF THE INTERSECTION OF ROCK ROAD AND 29TH STREET NORTH. ELEV. = 216.21 (C.O.W. DATUM)  
 ADD 1187.4 TO CITY DATUM FOR U.S.G.S. DATUM

*Samuel D. Malinowsky*  
 SAMUEL D. MALINOWSKY,  
 PROFESSIONAL ENGINEER

NO.	DATE	REVISION	BY
TITLE SHEET - STORM SEWER PLANS			
P.O. BOX 1304 2319 NORTH JACKSON JUNCTION CITY, KANSAS (913)762-5040 FAX 913-762-7744	<b>KAW VALLEY</b> ENGINEERING, INC.		122 N.W. PARKWAY PHENIX, MISSOURI 64150 (816)587-5033 FAX 816-587-0129
PROJ. NO. 94-1615	DATE SEPT 20, 1994	DESIGNER SCM	DRAWN BY JT
		CHECKED BY	CFN 161551TL
			SHEET 1 OF 3

NOTES:

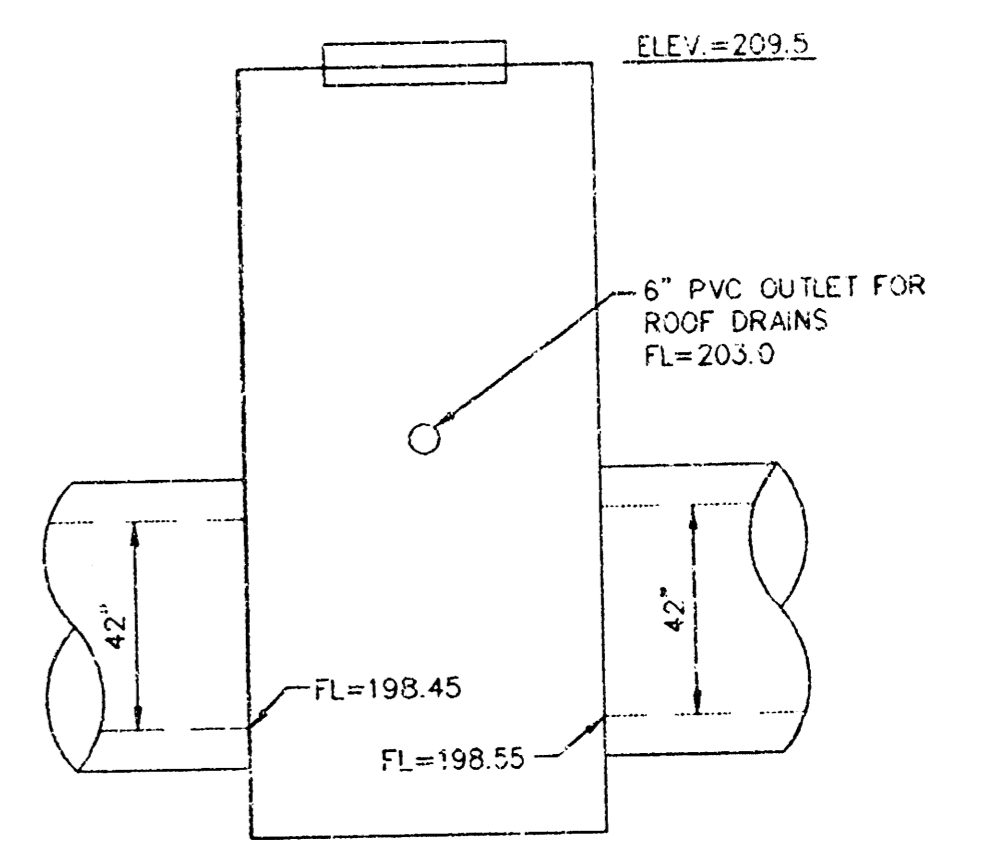
1. THE CONTRACTOR SHALL BE RESPONSIBLE FOR THE CONTROL OF DUST AND GIRT RISING AND SCATTERING IN THE AIR DURING CONSTRUCTION AND SHALL PROVIDE WATER SPRINKLING OR OTHER SUITABLE METHODS OF CONTROL. THE CONTRACTOR SHALL COMPLY WITH ALL GOVERNING REGULATIONS PERTAINING TO ENVIRONMENTAL PROTECTION.
2. ALL SLOPES AND AREAS DISTURBED BY CONSTRUCTION SHALL BE GRADED SMOOTH AND FOUR INCHES OF TOPSOIL APPLIED IF ADEQUATE TOPSOIL IS NOT AVAILABLE ON-SITE. THE CONTRACTOR SHALL PROVIDE TOPSOIL APPROVED BY THE OWNER AS NEEDED. THE AREA SHALL THEN BE SEED, FERTILIZED, MULCHED, WATERED AND MAINTAINED UNTIL HARDY GRASS GROWTH IS ESTABLISHED IN ALL AREAS. ANY AREAS DISTURBED FOR ANY REASON PRIOR TO FINAL ACCEPTANCE OF THE PROJECT SHALL BE CORRECTED BY THE CONTRACTOR AT NO ADDITIONAL COST TO THE OWNER.
3. CONTRACTOR SHALL USE BALES OF HAY OR OTHER MEANS OF CONTROLLING EROSION ALONG THE EDGE OF THE PROPERTY OR OTHER BOTTOM OF SLOPE LOCATIONS.
4. CONTRACTOR IS TO REMOVE AND DISPOSE OF ALL DEBRIS, RUBBISH AND OTHER MATERIALS RESULTING FROM PREVIOUS AND CURRENT DEMOLITION OPERATIONS. ALL MATERIAL TO BE DISPOSED OF IN ACCORDANCE WITH STATE AND LOCAL REGULATIONS.
5. THE GENERAL CONTRACTOR SHALL TAKE ALL PRECAUTIONS NECESSARY TO AVOID PROPERTY DAMAGE TO ADJACENT PROPERTIES DURING THE CONSTRUCTION PHASES OF THIS PROJECT. THE CONTRACTOR SHALL BE HELD SOLELY RESPONSIBLE FOR ANY DAMAGES TO THE ADJACENT PROPERTIES OCCURRING DURING THE CONSTRUCTION PHASES OF THIS PROJECT.
6. THE DUTY OF THE ENGINEER OR BOSTON CHICKEN TO CONDUCT CONSTRUCTION REVIEW OF THE CONTRACTOR'S PERFORMANCE IS NOT INTENDED TO INCLUDE REVIEW OF THE ADEQUACY OF THE CONTRACTOR'S SAFETY MEASURES, IN OR NEAR THE CONSTRUCTION SITE.
7. PIPE LENGTHS ARE CENTER TO CENTER OF STRUCTURE OR TO END OF END SECTIONS.
8. PARKING AND CURB AND OUTER GRADES ARE CRITICAL FOR POSITIVE STORM DRAINAGE. CONTRACTOR TO VERIFY GRADES CLOSELY PRIOR TO PAVING. CURB AND OUTER WILL REQUIRE REVERSE SLOPE IN SOME AREAS.
9. ALL UTILITY AND STORM SEWER TRENCHES CONSTRUCTED UNDER AREAS THAT RECEIVE PAVING SHALL BE BACKFILLED TO 18 INCHES ABOVE THE TOP OF THE PIPE WITH GRAVELLED STONE BASE MATERIAL PLACED ON EIGHT-INCH LITS, AND COMPACTED TO 95% STANDARD PROCTOR DENSITY.

**WARRANTY / DISCLAIMER**  
 THE DESIGN REPRESENTED IN THESE PLANS ARE IN ACCORDANCE WITH ESTABLISHED PRACTICES OF CIVIL ENGINEERING FOR THE DESIGN FUNCTIONS AND USES INTENDED BY BOSTON CHICKEN INC. AT THIS TIME. HOWEVER, NEITHER KAW VALLEY ENGINEERING, INC. NOR ITS PERSONNEL CAN OR DO WARRANT THESE DESIGN OR PLANS AS CONSTRUCTED, EXCEPT IN THE SPECIFIC CASES WHERE KAW VALLEY ENGINEERING'S PERSONNEL INSPECT AND CONTROL THE PHYSICAL CONSTRUCTION ON A CONTINUING BASIS AT THE SITE.

**CAUTION - NOTICE TO CONTRACTOR**  
 THE CONTRACTOR IS SPECIFICALLY CAUTIONED THAT THE LOCATION AND/OR ELEVATION OF EXISTING UTILITIES AS SHOWN ON THESE PLANS IS BASED ON RECORDS OF THE VARIOUS UTILITY COMPANIES AND, WHERE POSSIBLE, MEASUREMENTS TAKEN IN THE FIELD. THE INFORMATION IS NOT TO BE RELIED ON AS BEING EXACT OR COMPLETE. THE CONTRACTOR MUST CALL THE APPROPRIATE UTILITY COMPANY AT LEAST 48 HOURS BEFORE ANY EXCAVATION TO REQUEST EXACT FIELD LOCATION OF UTILITIES. IT SHALL BE THE RESPONSIBILITY OF THE CONTRACTOR TO RELOCATE ALL EXISTING UTILITIES WHICH CONFLICT WITH PROPOSED IMPROVEMENTS SHOWN ON THE PLANS. THE CONTRACTOR SHALL PROTECT EXISTING UTILITIES AT LOCATIONS OF POSSIBLE CONFLICTS PRIOR TO ANY CONSTRUCTION OF NEW UTILITIES.

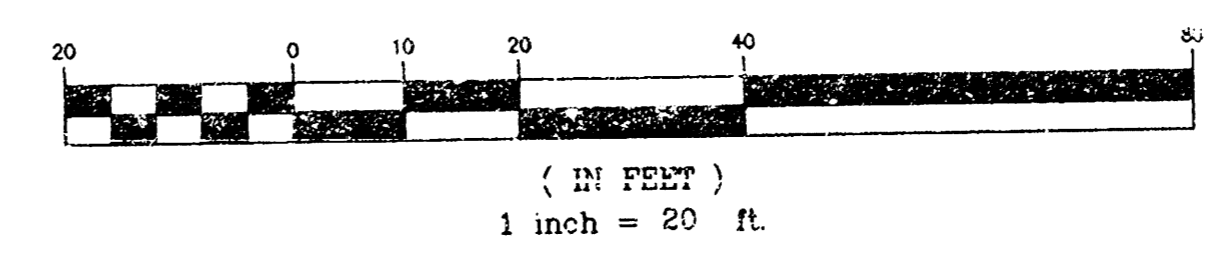
**SAFETY NOTICE TO CONTRACTOR**  
 IN ACCORDANCE WITH GENERALLY ACCEPTED CONSTRUCTION PRACTICES, THE CONTRACTOR WILL BE SOLELY AND COMPLETELY RESPONSIBLE FOR CONDITIONS OF THE JOB SITE, INCLUDING SAFETY OF ALL PERSONS AND PROPERTY DURING PERFORMANCE OF THE WORK. THIS REQUIREMENT WILL APPLY CONTINUOUSLY AND NOT BE LIMITED TO NORMAL WORKING HOURS.

**CAUTION: FIBER OPTIC CABLE LOCATE PRIOR TO EXCAVATING**



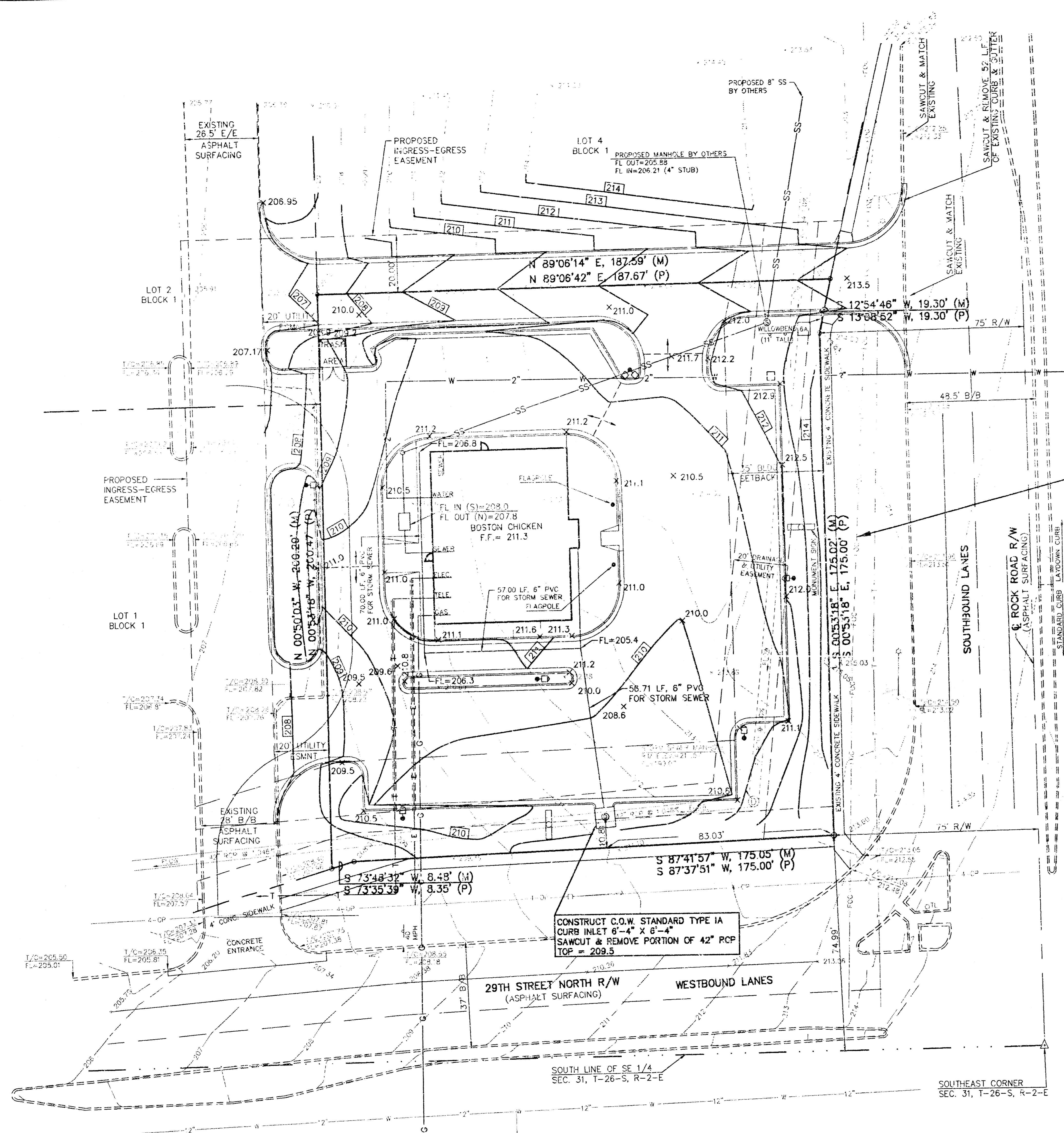
42" RCP STORM SEWER LOCATION AND ELEVATION WAS NOT VERIFIED IN THE FIELD. PROPOSED FLOWLINES CALCULATED BASED ON AS-BUILT PLANS FROM THE CITY OF WICHITA. ADJUST FLOWLINES AS NEEDED TO MATCH EXISTING PIPE.

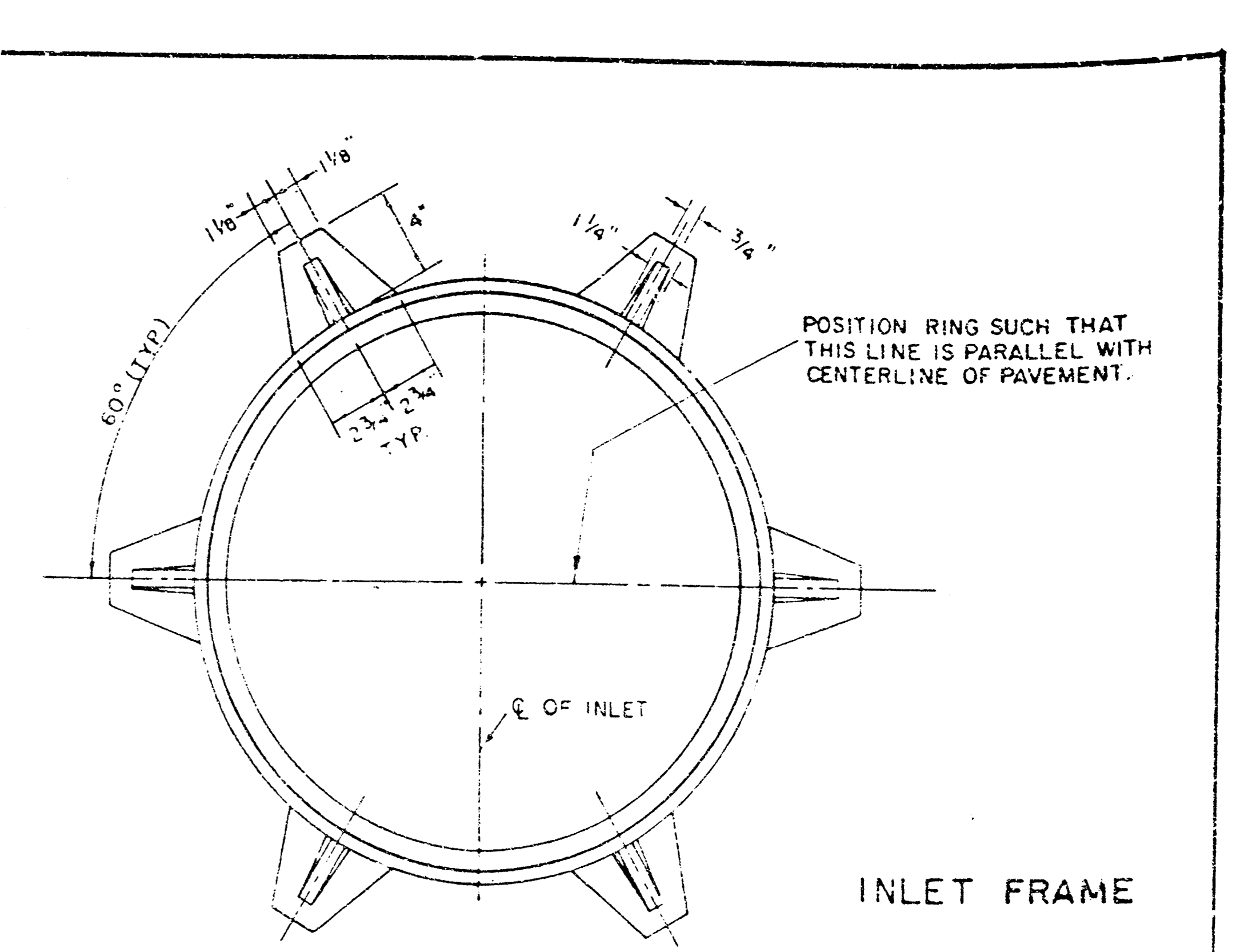
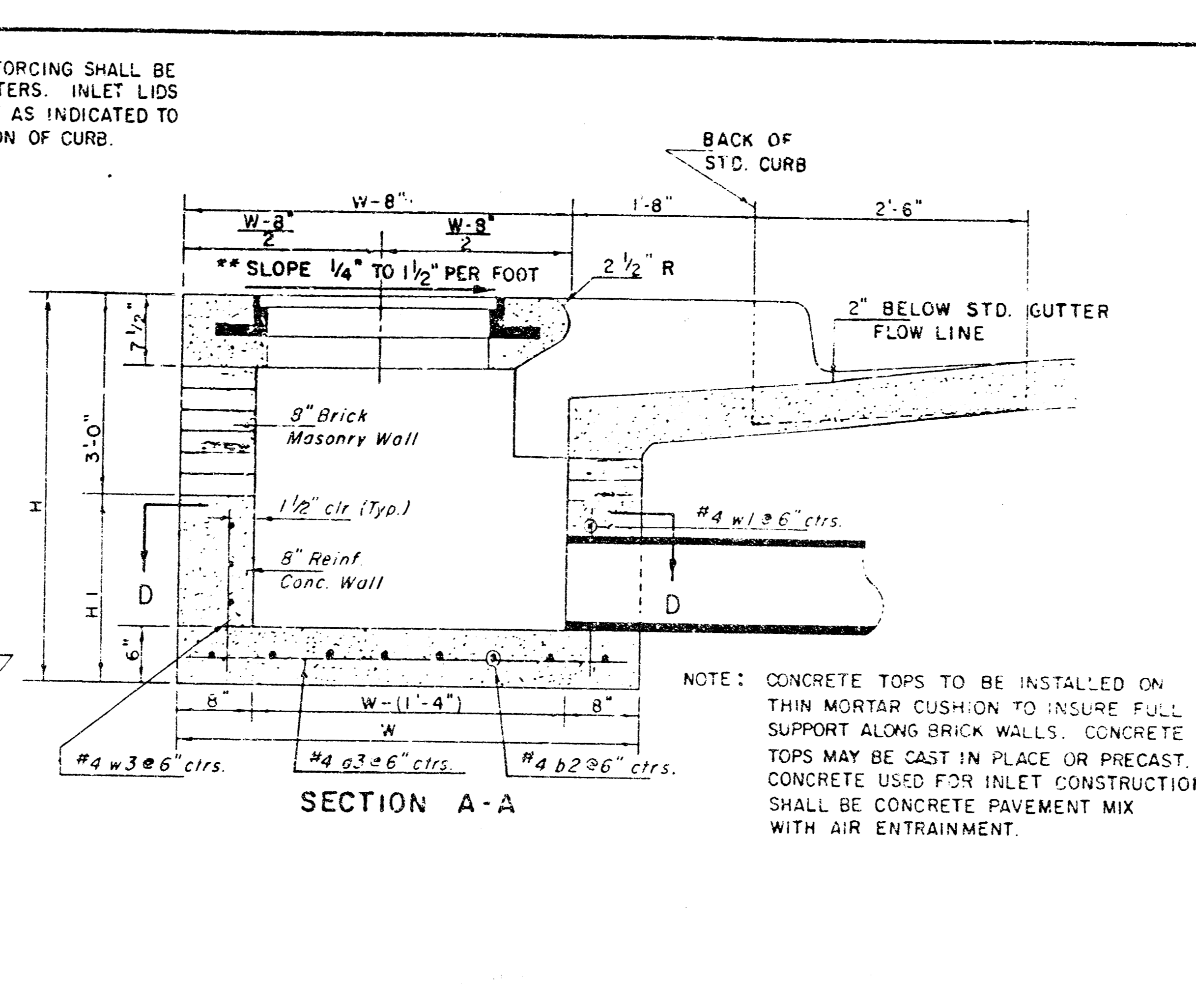
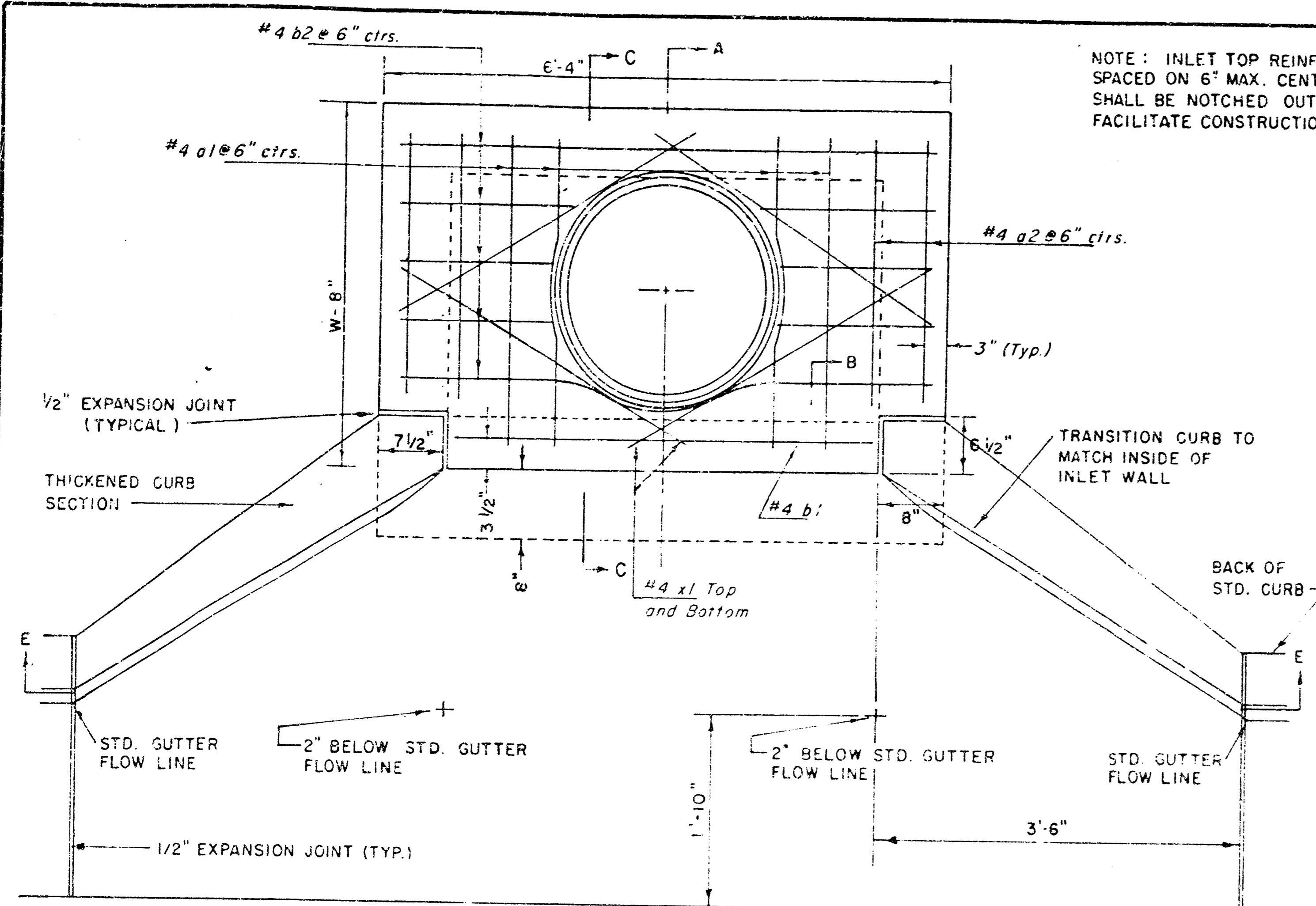
GRAPHIC SCALE



BENCHMARK: BRASS DISC ON TRAFFIC SIGNAL POLE AT THE SOUTHEAST CORNER OF THE INTERSECTION OF ROCK ROAD AND 29TH STREET NORTH.  
 ELEV. = 216.21 (C.O.W. DATUM)  
 ADD 1187.4 TO CITY DATUM FOR U.S.C.S. DATUM

NO.	DATE	REVISION	BY
<b>STORM SEWER PLAN</b>			
P.O. BOX 1304 2315 NORTH JACKSON LANCASTER CITY, KANSAS (913)782-5040 FAX 913-782-7744		122 N.W. PARKWAY RIVERVIEW, MISSOURI 64150 (816)587-5033 FAX 816-587-0129	
KAW VALLEY ENGINEERING, INC		DATE: SEPT. 20, 1994 DESIGNER: SOM DRAWN BY: JT CHECKED BY: CBN 1615PLAN SHEET 2 OF 3	





PLAN

SECTION A-A

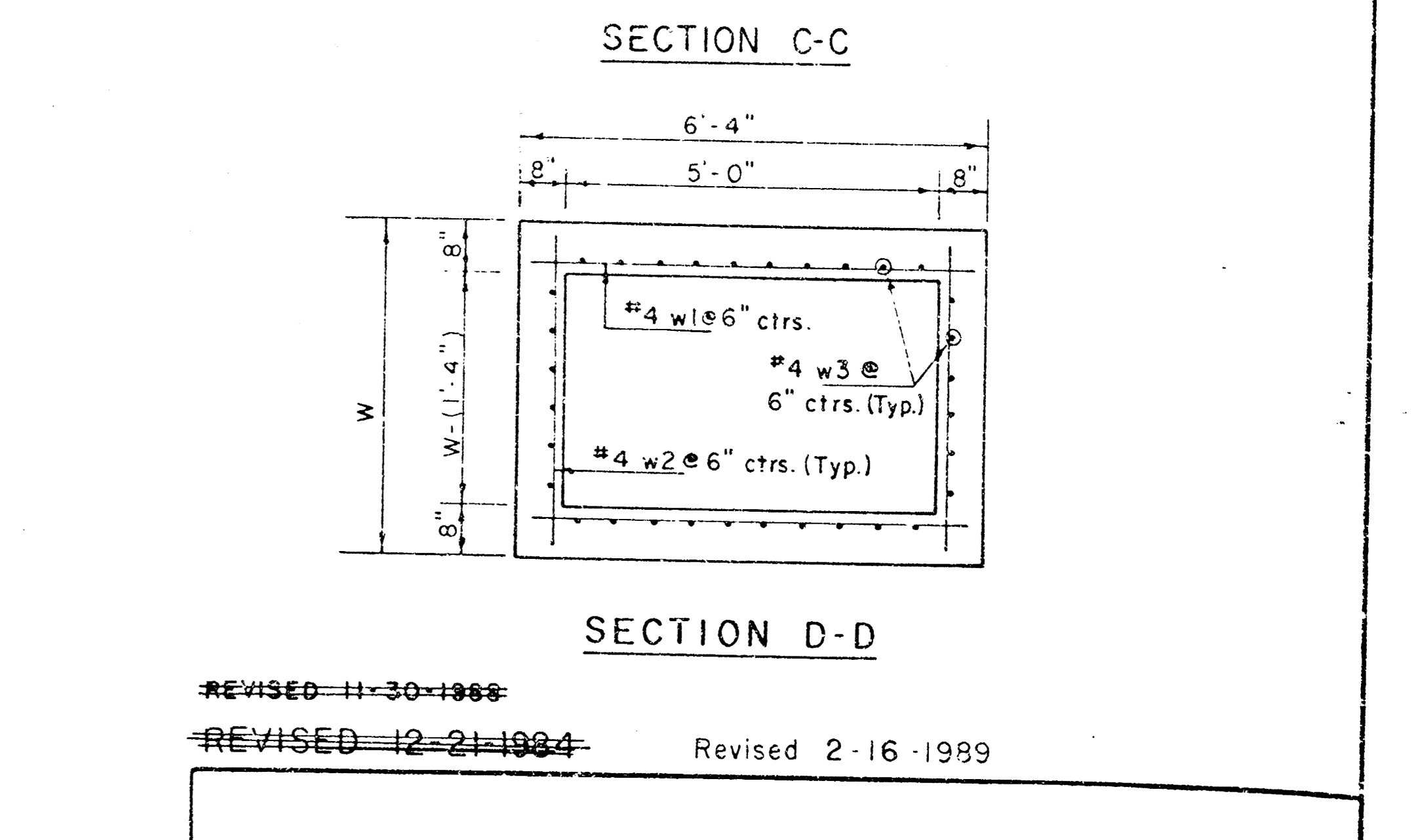
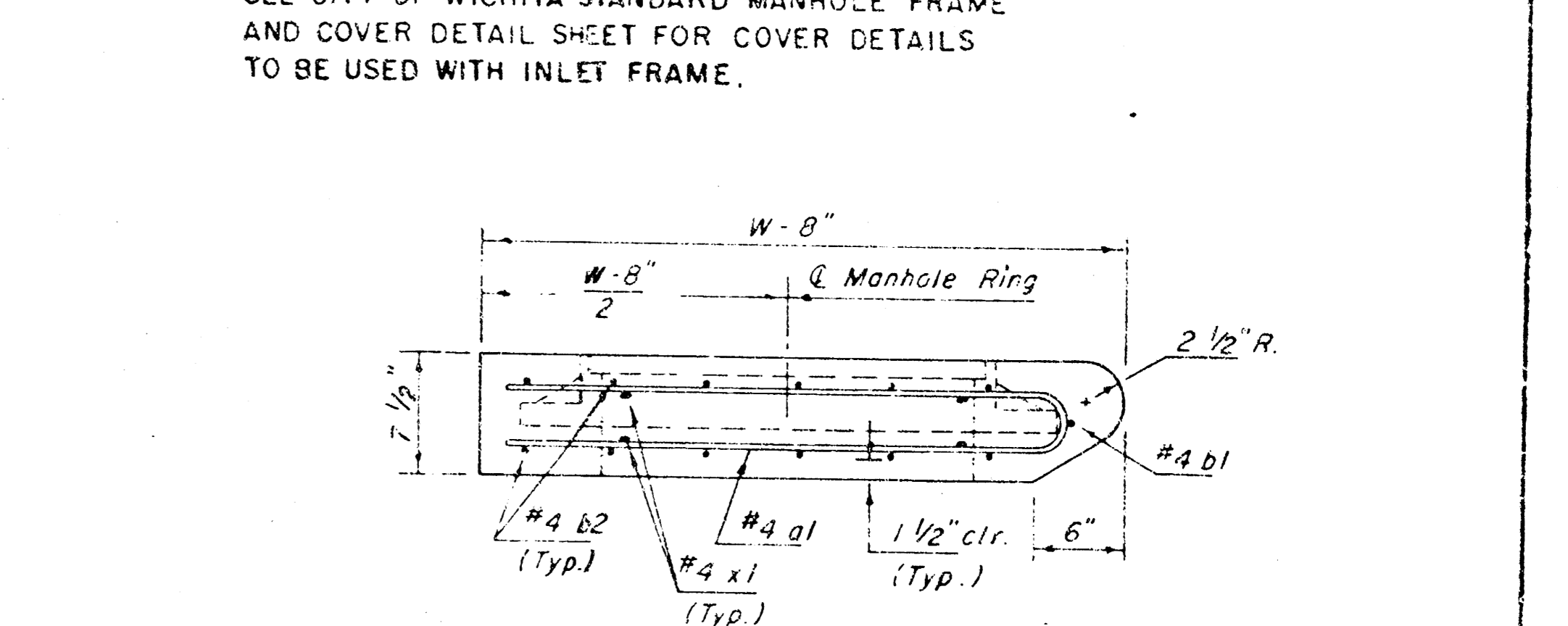
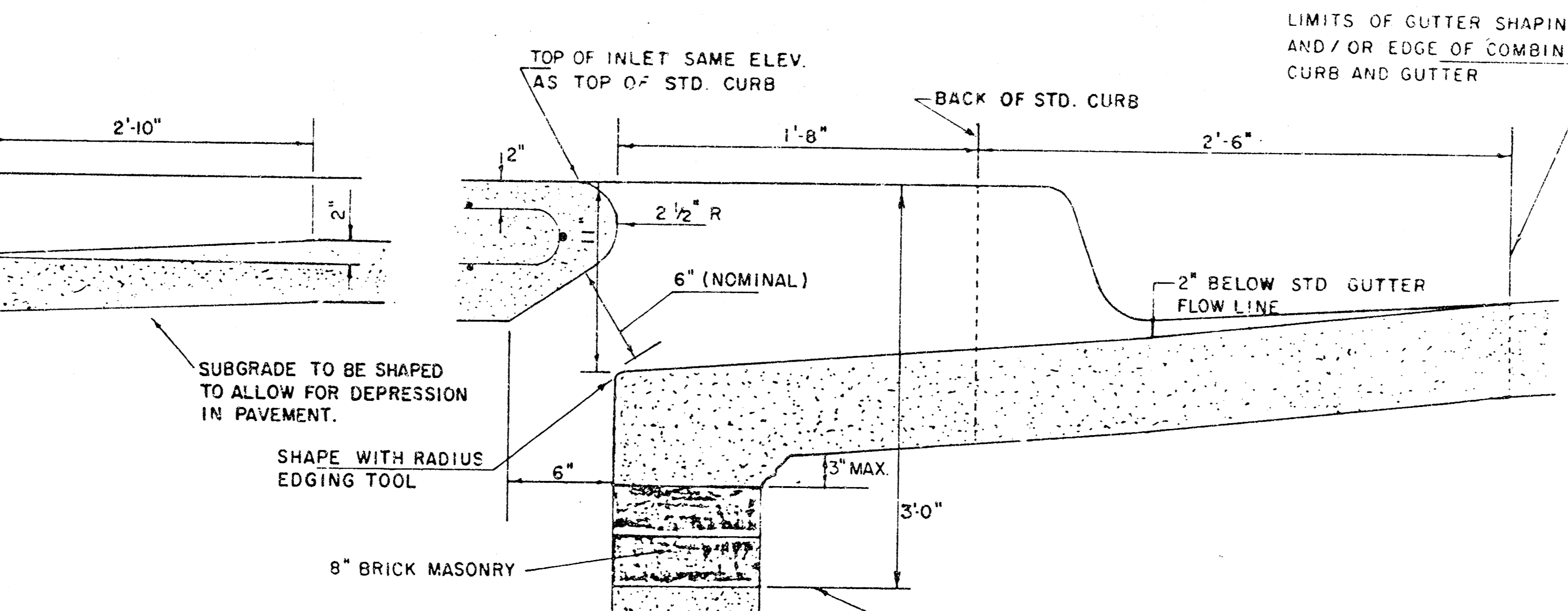
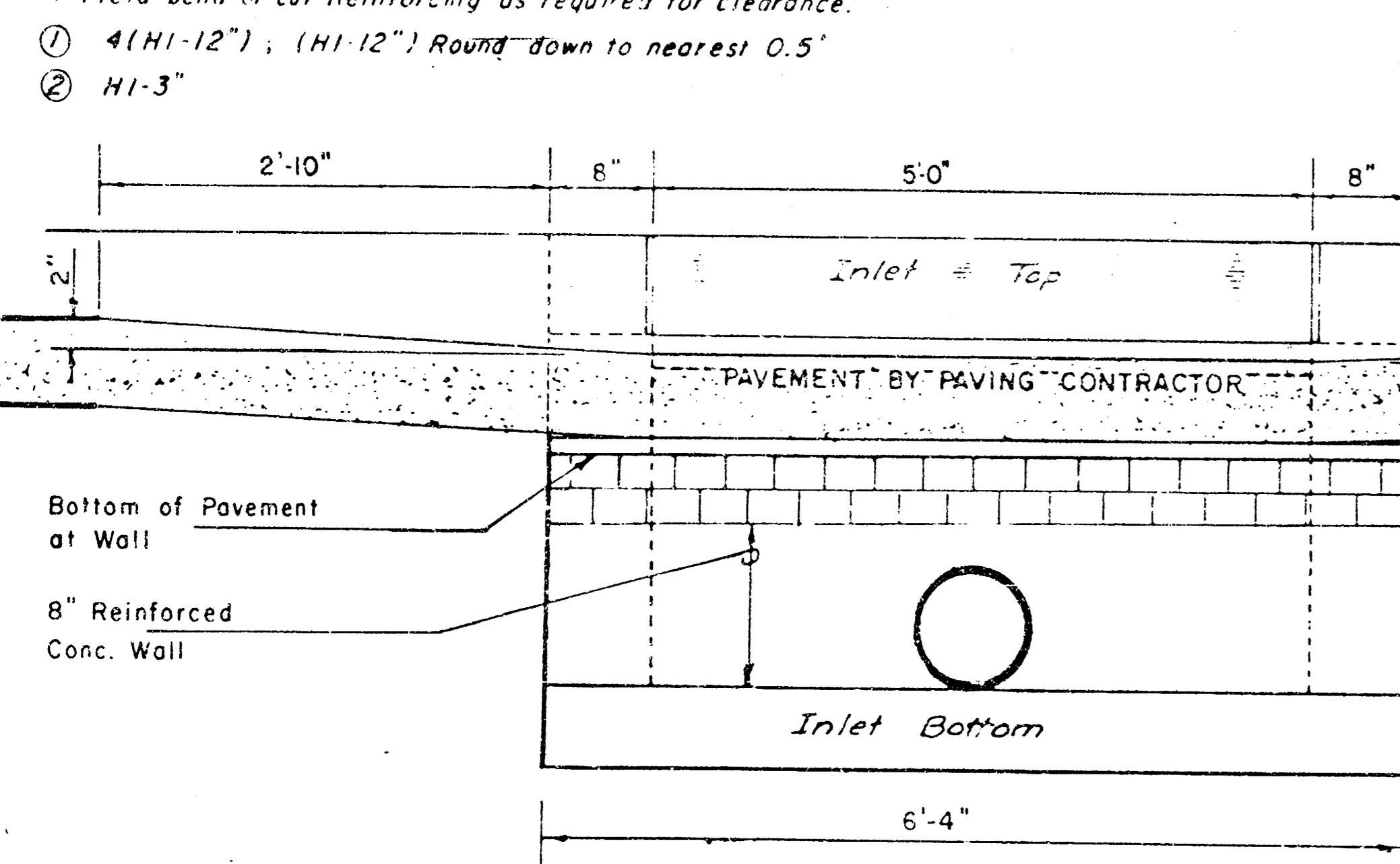
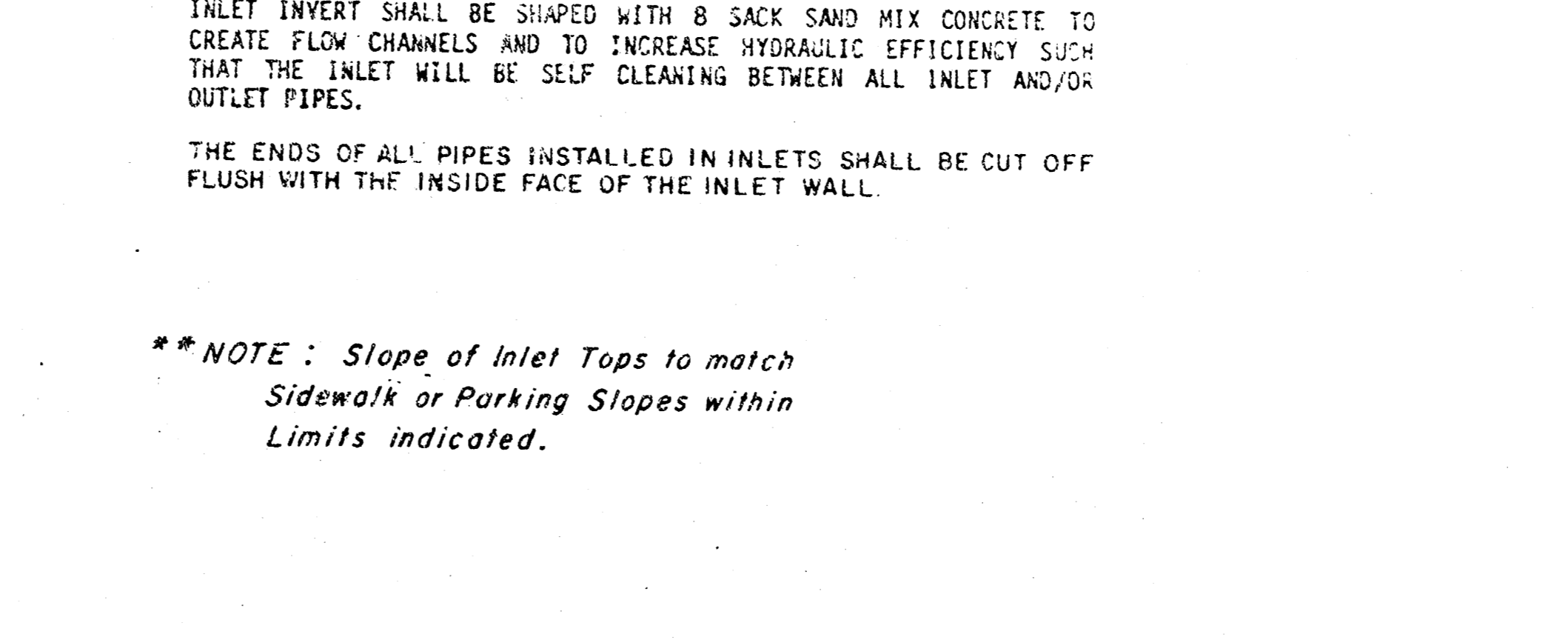
INLET FRAME

PRECAST SLAB AND FLOOR REINFORCING											
Mark	Size	W=4'-4"		W=5'-4"		W=6'-4"		W=7'-4"		W=8'-4"	
		No.	Length	No.	Length	No.	Length	No.	Length	No.	Length
a1	#4	6	6'-7"	6	8'-7"	6	10'-7"	6	12'-7"	6	14'-7"
a2	#4	4	6'-0"	4	8'-0"	4	10'-0"	4	12'-0"	4	14'-0"
a3	#4	13	4'-1"	13	5'-1"	13	6'-1"	13	7'-1"	13	8'-1"
b1	#4	1	4'-9"	1	4'-9"	1	4'-9"	1	4'-9"	1	4'-9"
b2	#4	23	6'-1"	29	6'-1"	35	6'-1"	41	6'-1"	47	6'-1"
x1	#4	8	3'-10"	8	4'-2"	8	4'-6"	8	4'-10"	8	5'-2"

WALL REINFORCING											
Mark	Size	W=4'-4"		W=5'-4"		W=6'-4"		W=7'-4"		W=8'-4"	
		No.	Length	No.	Length	No.	Length	No.	Length	No.	Length
w1	#4	1	6'-1"	1	6'-1"	1	6'-1"	1	6'-1"	1	6'-1"
w2	#4	1	4'-1"	1	5'-1"	1	6'-1"	1	7'-1"	1	8'-1"
w3	#4	32	2	36	2	40	2	44	2	48	2

STANDARD CURB INLET PRECAST TOPS			
W	PRECAST TOP SIZE	PIPE SIZE	CU. YD. CONC.
4'-4"	3'8" x 6'4" x 7 1/2"	21" B SMALLER	0.38 ±
5'-4"	4'8" x 6'4" x 7 1/2"	24" B 30"	0.51 ±
6'-4"	5'8" x 6'4" x 7 1/2"	36" B 42"	0.64 ±
7'-4"	6'8" x 6'4" x 7 1/2"	48" B 54"	0.77 ±
8'-4"	7'8" x 6'4" x 7 1/2"	60" B 66"	0.90 ±



REVISOR 11-30-1988  
 REVISOR 12-21-1994  
 Revised 2-16-1999

**DETAIL STANDARD TYPE IA CURB INLET**  
 CITY OF WICHITA, KANSAS  
 INLET OPENING = 6" x 5' 0"

JUNE 1984