

**GENERAL NOTES**

**BSITE GRADING NOTES**

THE GRADING CONTRACTOR SHALL VISIT THE SITE AND FIELD VERIFY ALL EXISTING CONDITIONS AND NOTIFY THE ARCHITECT OF ANY DISCREPANCIES IN OR WITH THE DOCUMENTS.

CONTRACTOR LIMITS OF WORK ARE TO AND WITHIN THE PROPERTY LINES ONLY.

NO PRESENTATION IS MADE ON THESE DRAWINGS CONCERNING EARTHWORK MATERIAL QUALITIES, HOWEVER THE EARTHWORK CUTS AND FILLS ARE PROJECTED TO BALANCE. AN ALLOWANCE IS TAKEN IN THE CONTRACT FOR "IMPORT STRUCTURAL FILL" IN THE EVENT THAT NOT ENOUGH SUITABLE ON SITE FILL IS ENCOUNTERED.

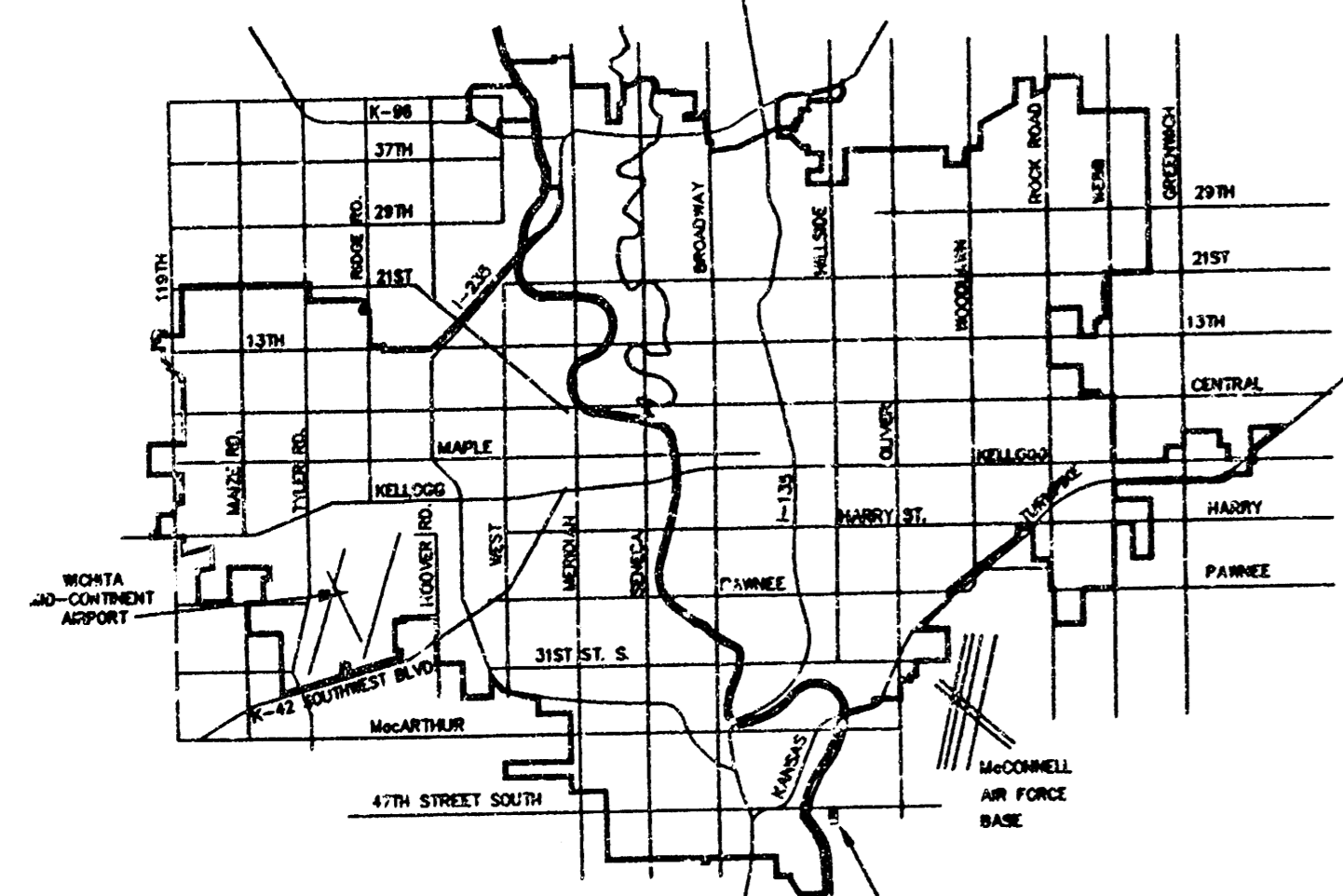
GRADING OPERATIONS SHALL BE PREPARED WHERE SHOWN AND AS INDICATED BY PHASE I, PHASE II IS NOT INCLUDED AS PART OF THIS WORK. CONTRACTOR SHALL HOWEVER MAINTAIN PROPER GRADES AT PHASE II TO FACILITATE THE USAGE OF THAT AREA.

GRADES INDICATED REPRESENT FINISH GRADES AT TOP OF PROPOSED PAVEMENT. ADJUST FOR SUBGRADES. SEE PAVEMENT PLAN.

CONTRACTOR SHALL MATCH EXISTING FINISH GRADES ALONG PROPERTY LINES AND AT STRUCTURES AS NOTED.

**STORM WATER SEWER NOTES**

- Underground utility service lines and overhead utility pole lines are to be adjusted as necessary by others prior to construction unless the plans specifically call for their adjustment by the Contractor or unless the plans specifically identify a utility to be adjusted by its owner during construction. Existing utilities and their location, as shown on the plans, represent the best information obtainable for design. Location information has been obtained from the various utility companies and is either from company record drawings or company provided field locations. The Contractor will be required to work around existing utilities within the right-of-way which do not conflict with proposed construction.
- The Contractor shall be responsible for preserving property lines. The Contractor will be required to re-establish any property lines which are damaged or destroyed by his construction operations. Such lines shall be re-established by a licensed land surveyor or a licensed professional engineer in accordance with state laws.
- The Contractor shall contact Kansas One Call at 687-2470 to have underground utilities located prior to construction of this project.
- The Contractor shall seed, fertilize, and mulch all disturbed areas after completion of construction.



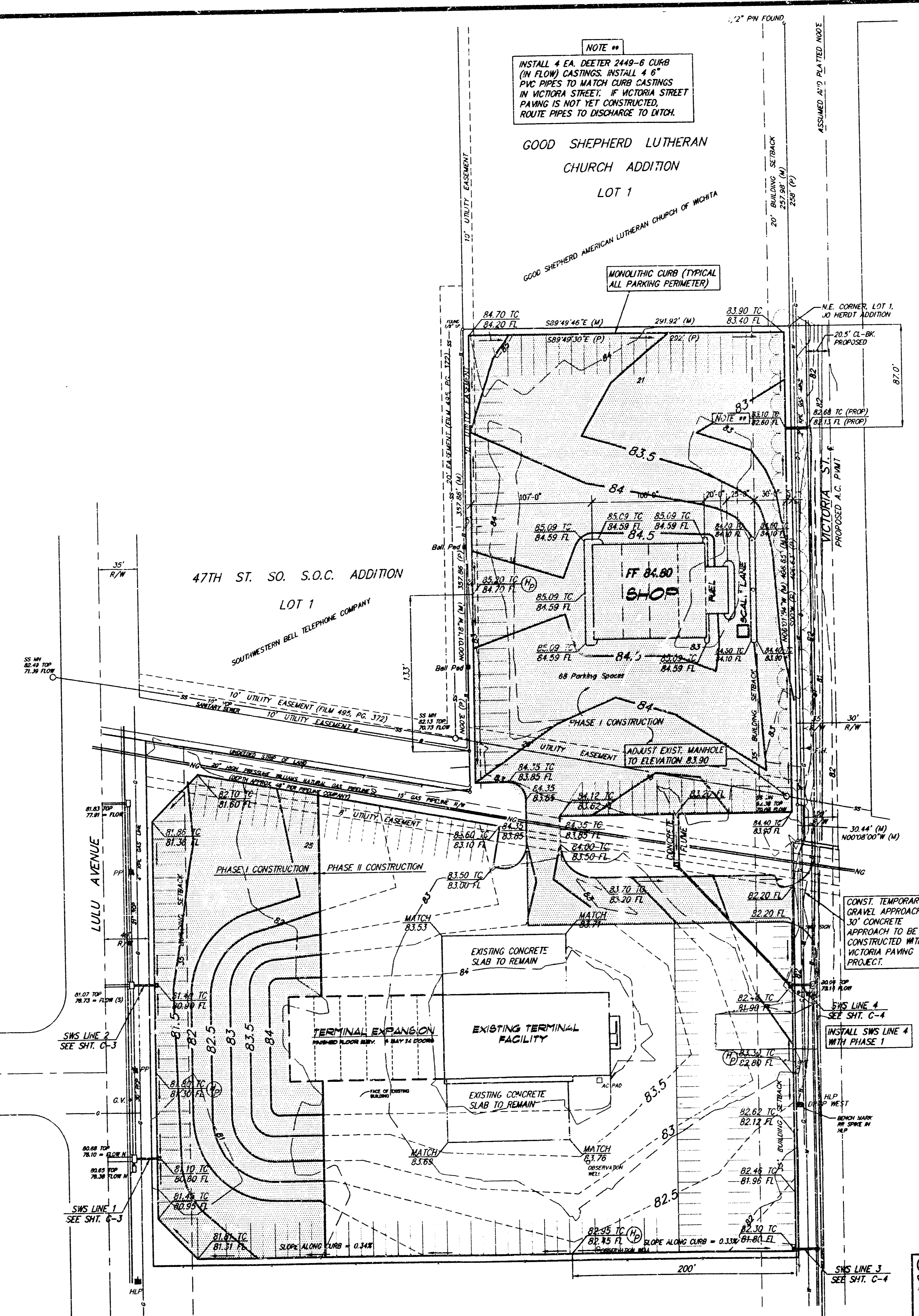
VICINITY MAP

PROJECT LOCATION

INSPECTION AND TESTING FOR THIS PROJECT TO BE PROVIDED BY A LICENSED CONSULTING ENGINEERING FIRM UNDER CONTRACT WITH THE OWNER/DEVELOPER. SAID INSPECTION TO BE IN ACCORDANCE WITH THE CITY OF WICHITA STANDARD CONSTRUCTION ENGINEERING PRACTICES AND CERTIFIED BY A LICENSED PROFESSIONAL ENGINEER. NO WORK SHALL BE PERFORMED IN DEDICATED EASEMENTS OR PUBLIC RIGHT-OF-WAY BY THE CONTRACTOR WITHOUT SUCH INSPECTIONS. WORK SHALL ONLY BE COMMENCED IN DEDICATED EASEMENTS OR PUBLIC RIGHT-OF-WAY WITHOUT WRITTEN AUTHORIZATION BY THE CITY ENGINEER.

APPROVED AS NOTED  
BY CITY ENGINEER OF WICHITA

Sanitary Sewers \_\_\_\_\_  
Storm Sewers VRH 10/3/94  
Driveway Approaches \_\_\_\_\_  
Water Mains \_\_\_\_\_  
Parking \_\_\_\_\_



NOTE ##  
INSTALL 4 EA. DEETER 2449-6 CURB (IN FLOW) CASTINGS. INSTALL 4 8" PVC PIPES TO MATCH CURB CASTINGS IN VICTORIA STREET. IF VICTORIA STREET PAVING IS NOT YET CONSTRUCTED, ROUTE PIPES TO DISCHARGE TO DITCH.

GOOD SHEPHERD LUTHERAN CHURCH ADDITION  
LOT 1

MONOLITHIC CURB (TYPICAL ALL PARKING PERIMETER)

47TH ST. SO. S.O.C. ADDITION  
LOT 1  
SOUTHWESTERN BELL TELEPHONE COMPANY

FF 84.80  
SHOP

EXISTING TERMINAL FACILITY

TERMINAL EXPANSION

CONST. TEMPORARY GRAVEL APPROACH. 30' CONCRETE APPROACH TO BE CONSTRUCTED WITH VICTORIA PAVING PROJECT.

BOOKED  
2-14-97  
MCL  
C-169

**SITE DRAINAGE/GRADING PLAN**  
SCALE 1"=80'-0"

As-built (no revision) 12-3-94 SCR

**SRB** 924 NORTH MAIN 316-264-8088  
WICHITA, KANSAS 67211 FAX 264-4821

**SAVOY, RUGGLES & BOHM, P.A.**  
ENGINEERING & SURVEYING

PROJECT NUMBER  
**502 PPS (607861)**

DRAWN	DESIGN	REVIEW	DATE	UTILITY	SRB JOB
C. BOHM	C. BOHM	TCR	9-1994		76E

REVISIONS	BY

ADDITION AND RENOVATION FOR:

**AMERICAN AIRWAYS**  
FLIGHT DECK

Serving  
"AMERICA"  
Safely! 4931 S. VICTORIA WICHITA, KANSAS

**PATRICK V. BROWN**  
CORPORATE ARCHITECT

2820 Northwood Drive  
Wichita, Kansas 67211  
Phone: (316) 261-2222 Fax: (316) 261-0000

**PROFESSIONAL ENGINEER**  
MICHAEL BOHM  
LICENSED  
11631  
KANSAS  
12-3-94

DRAWN  
CMB

CHECKED BY:

START DATE  
SEPT 22, 1994

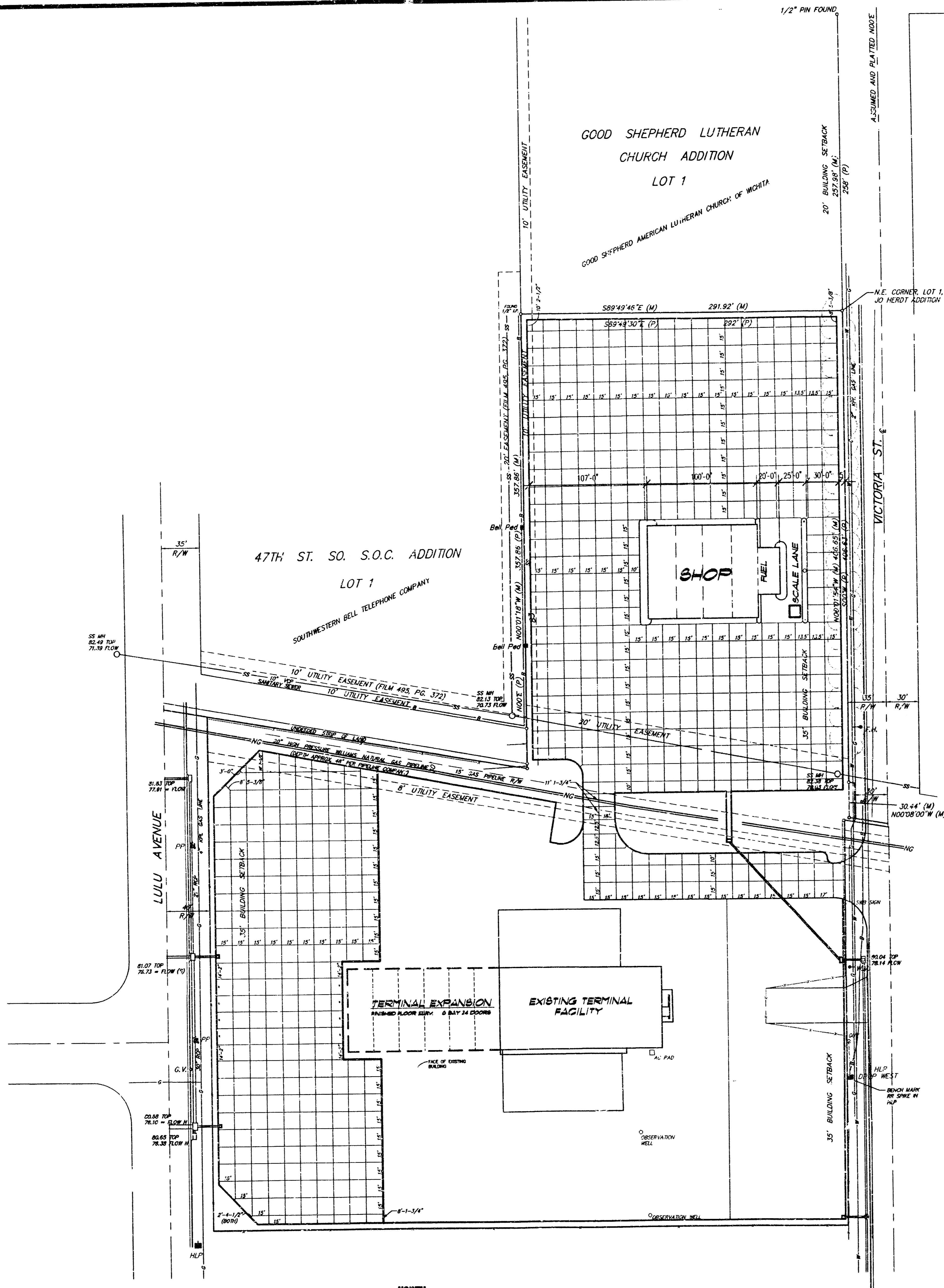
SCALE  
1"=20'

JOB NO.  
750-WTK-94

SHEET  
**C-1**

OF SHEETS

C:\PROJECTS\ACTIVE\DRAWING\JOB.DWG MON OCT 3 07:50:33 1994 PLOTTED BY SRB



**CONCRETE JOINT LAYOUT PLAN**  
SCALE 1" = 80'-0"

**1 CONC. JOINT DTL.**  
SCALE: 3/4" = 1'-0"

**1A CONTROL JOINT FOR WALK**

**1B EXPANSION JOINT FOR WALK**

**1C CONSTRUCTION/EXPANSION JOINT FOR PAVEMENT**

**1D CONTROL JOINT FOR PAVEMENT**

**1E STANDARD PAVEMENT SECTION**

REVISIONS	BY

**AMERICAN CONCRETE SYSTEMS**  
Serving AMERICA Safely

**ADDITION AND RENOVATION FOR: AMERICAN CONCRETE SYSTEMS**  
Serving AMERICA Safely

4931 S. VICTORIA WICHITA, KANSAS

**PATRICK T. BROHN**  
CORPORATE ARCHITECT

2300 Pennsylvania Blvd., Suite 200  
Wichita, Kansas 67202  
Phone: (913) 874-2282 FAX: (913) 874-4444

**PROFESSIONAL ENGINEER**  
11631  
10-3-94

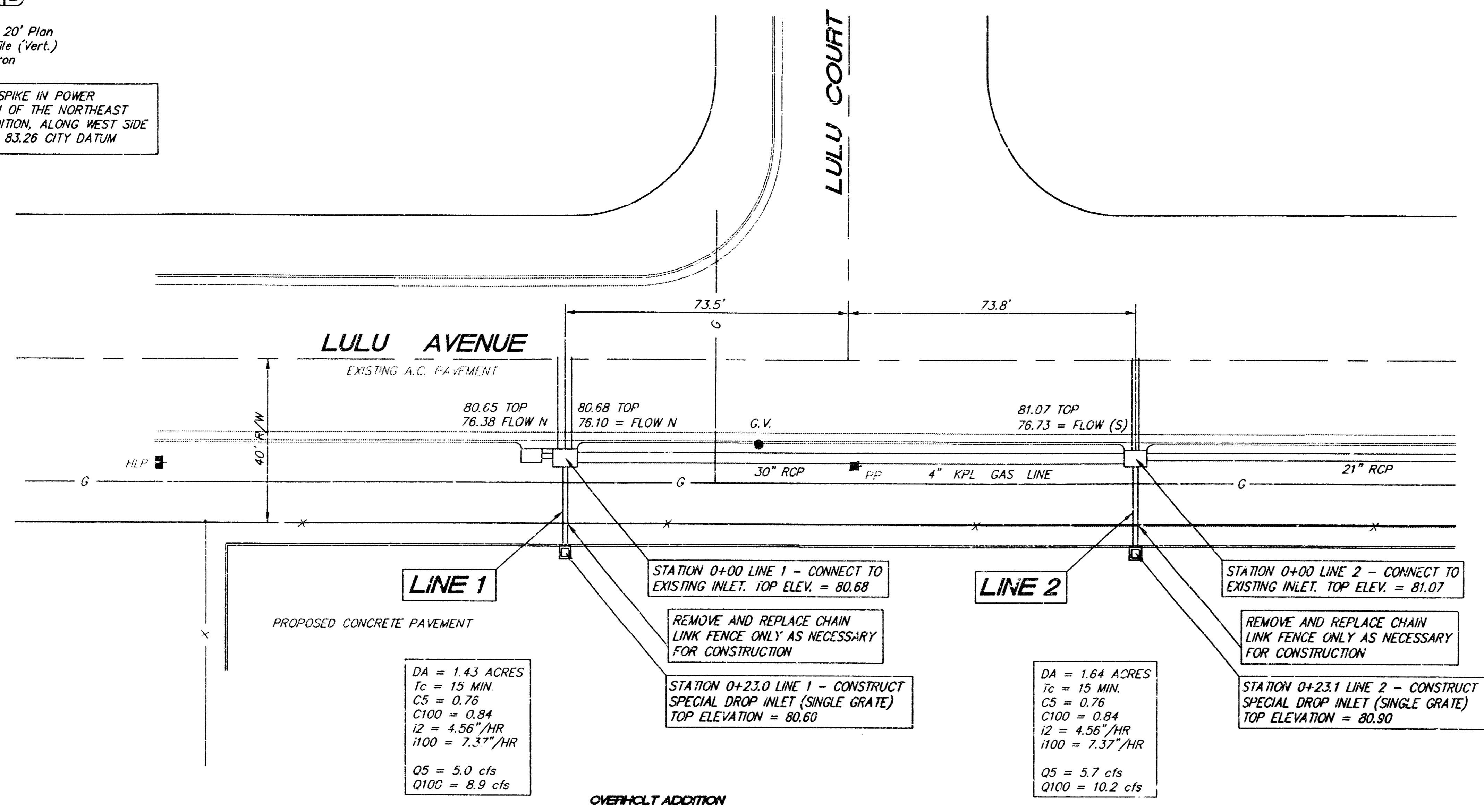
DRAWN: CMB  
CHECKED BY:  
START DATE: SEPT 22, 1994  
SCALE: 1" = 20'  
JOB NO.: 750-WTK-94  
SHEET:  
**C-2**  
SHEETS

<b>SRB</b>	924 NORTH MAIN WICHITA, KANSAS 67211	316-264-8008 FAX 264-4821
<b>SAVOY, RUGGLES &amp; BOHM, P.A.</b> ENGINEERING & SURVEYING		
PROJECT NUMBER		
DRAWN: C. BOHM	DESIGN: C. BOHM	REVIEW: TCR
DATE: 9-1994	UTILITY	SRB JOB: 766

THE ARCHITECTURAL PORTION OF THIS DRAWING AND THE ACCOMPANYING SPECIFICATIONS IS AN INSTRUMENT OF SERVICE, AND SHALL REMAIN THE PROPERTY OF PATRICK T. BROHN ARCHITECT. NO PART OF THIS DRAWING OR SPECIFICATIONS SHALL BE REPRODUCED OR TRANSMITTED IN ANY FORM OR BY ANY MEANS, ELECTRONIC OR MECHANICAL, INCLUDING PHOTOCOPYING, RECORDING, OR BY ANY INFORMATION STORAGE AND RETRIEVAL SYSTEM, WITHOUT THE WRITTEN PERMISSION OF PATRICK T. BROHN ARCHITECT. THE ARCHITECT SHALL NOT BE RESPONSIBLE FOR CONDITIONS FROM THESE PLANS AND SPECIFICATIONS WHICH MAY OCCUR AFTER CONSTRUCTION BEGINS UNLESS THEY ARE IDENTIFIED IN THIS AGREEMENT.

**SRB**  
 Scale: 1" = 20' Plan  
 1" = 5' Profile (vert.)  
 ○ = Iron

BENCH MARK: RAILROAD SPIKE IN POWER POLE LOCATED 223' SOUTH OF THE NORTHEAST CORNER OF OVERHOLT ADDITION, ALONG WEST SIDE OF VICTORIA, ELEVATION = 83.26 CITY DATUM

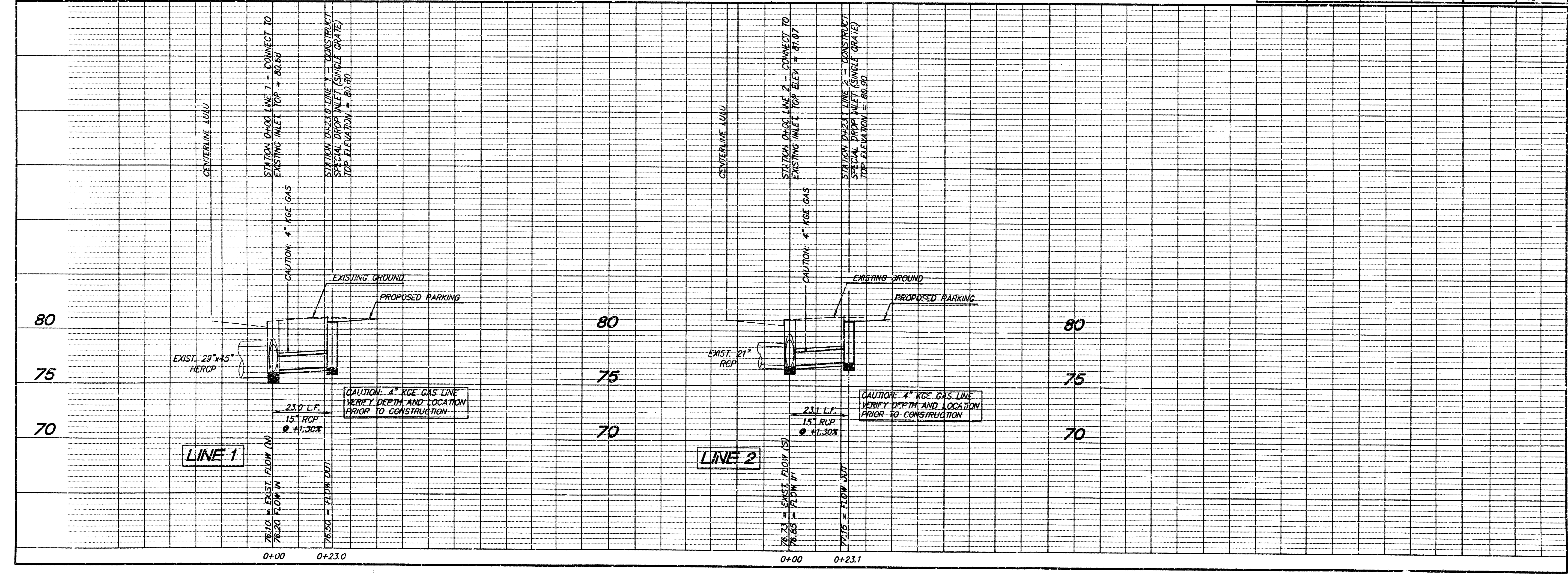


**LINE 1**  
 DA = 1.43 ACRES  
 Tc = 15 MIN  
 CS = 0.76  
 C100 = 0.84  
 I2 = 4.56"/HR  
 I100 = 7.37"/HR  
 Q5 = 5.0 cfs  
 Q100 = 8.9 cfs

**LINE 2**  
 DA = 1.64 ACRES  
 Tc = 15 MIN  
 CS = 0.76  
 C100 = 0.84  
 I2 = 4.56"/HR  
 I100 = 7.37"/HR  
 Q5 = 5.7 cfs  
 Q100 = 10.2 cfs

NOTE: CONTRACTOR TO CONTACT CALVIN BRUMMER WITH KGE GAS AT 832-3119 TO ARRANGE THE RELOCATION OF GAS SERVICE LINE CROSSINGS.

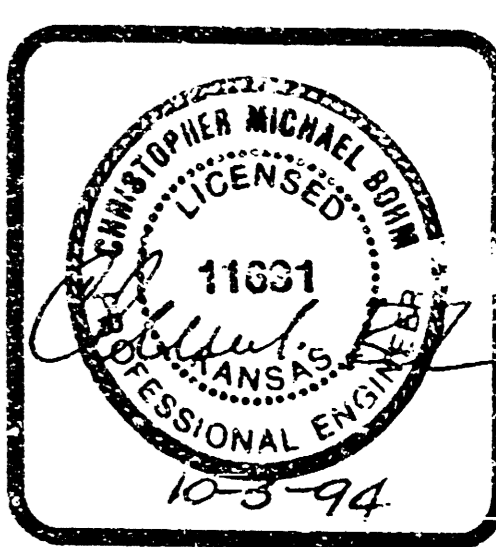
**SRB** 924 NORTH WAIN WICHITA, KANSAS 67211 316-264-8008 FAX 264-4821  
**SAVOY, RUGGLES & BOHM, P.A.** ENGINEERING & SURVEYING  
 PROJECT NUMBER **502 PPS (607861)**  
 DRAWN: C. BOHM DESIGN: C. BOHM REVIEW: TCR DATE: 9-1994 UTILITY: SRB JOB: 76E



REVISIONS	BY

ADDITION AND RENOVATION FOR:  
**AMERICAN HIGHWAYS**  
 Serving AMERICA Safely!  
 WICHITA, KANSAS  
 4931 S. VICTORIA

**PATRICK W. BOHM**  
 CORPORATE ARCHITECT  
 2500 Harvard Drive  
 Lawrence, Kansas 66044  
 Phone (913) 844-1122 FAX (913) 844-0800

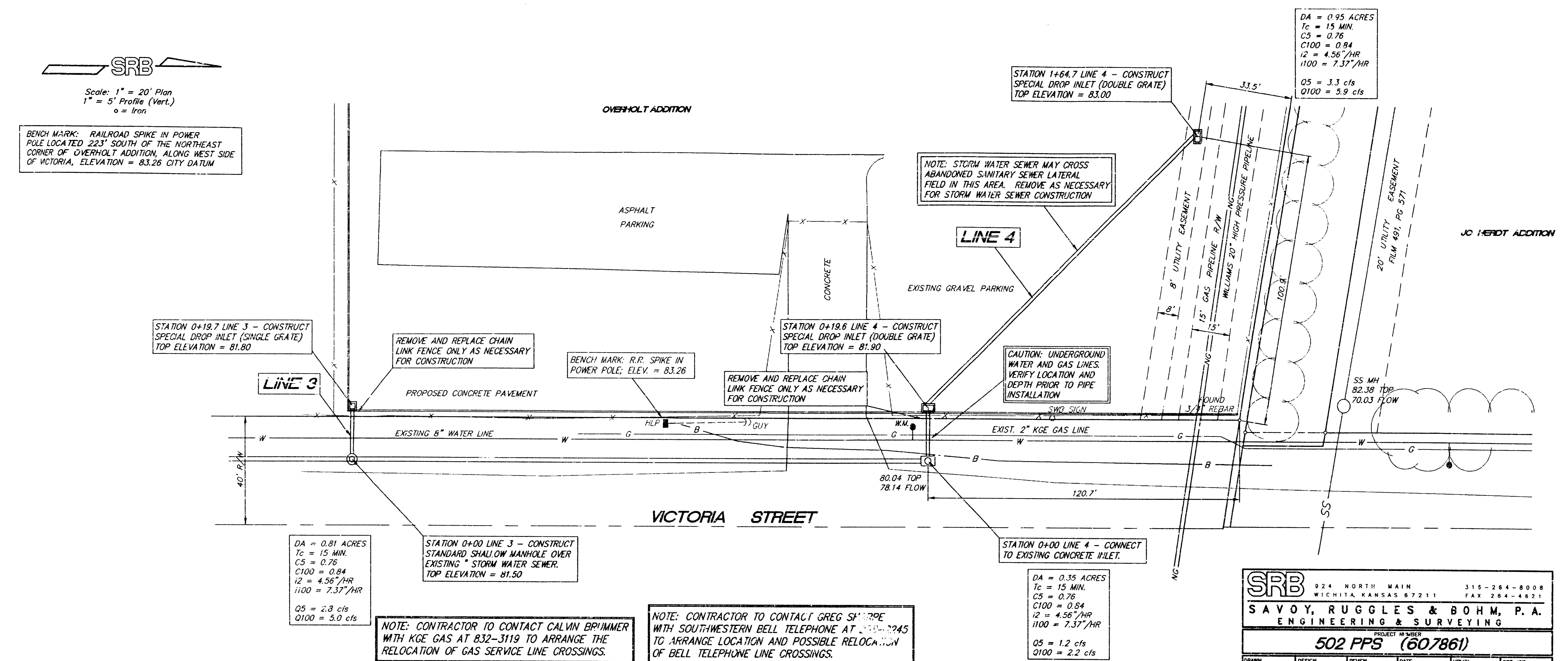


DRAWN: CMB  
 CHECKED BY:  
 START DATE: SEPT 22, 1994  
 SCALE: 1" = 20"  
 JOB NO.: 750-WTK-04  
 SHEET

C:\PROJECTS\ACTIVE\760\SRB.DWG AMB, INC. 3 12 12 07 1994

**SRB**  
 Scale: 1" = 20' Plan  
 1" = 5' Profile (Vert.)  
 o = Iron

BENCH MARK: RAILROAD SPIKE IN POWER POLE LOCATED 223' SOUTH OF THE NORTHEAST CORNER OF OVERHOLT ADDITION, ALONG WEST SIDE OF VICTORIA, ELEVATION = 83.26 CITY DATUM

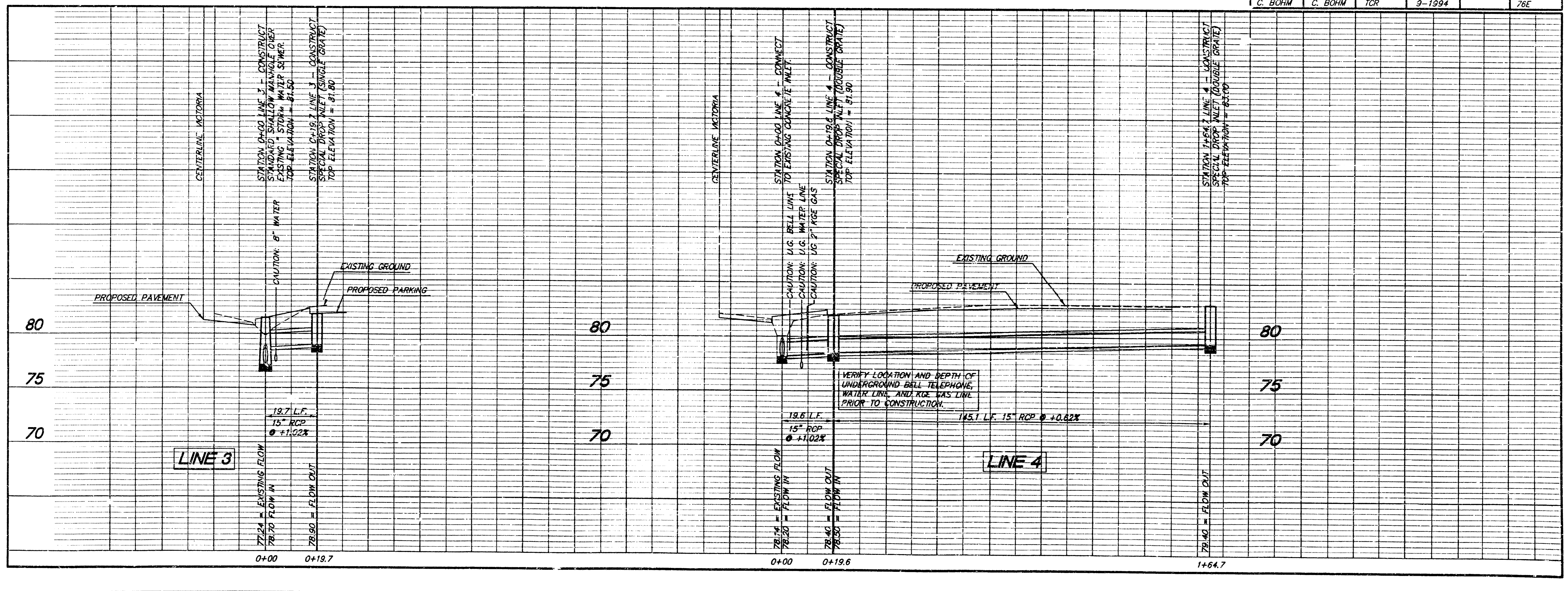


**SRB** 924 NORTH MAIN 315-264-8008  
 WICHITA, KANSAS 67211 FAX 264-4821

**SAVOY, RUGGLES & BOHM, P. A.**  
 ENGINEERING & SURVEYING

PROJECT NUMBER  
**502 PPS (607861)**

DRAWN	DESIGN	REVIEW	DATE	UTILITY	SRB JOB
C. BOHM	C. BOHM	TCR	9-1994		76E



REVISIONS	BY

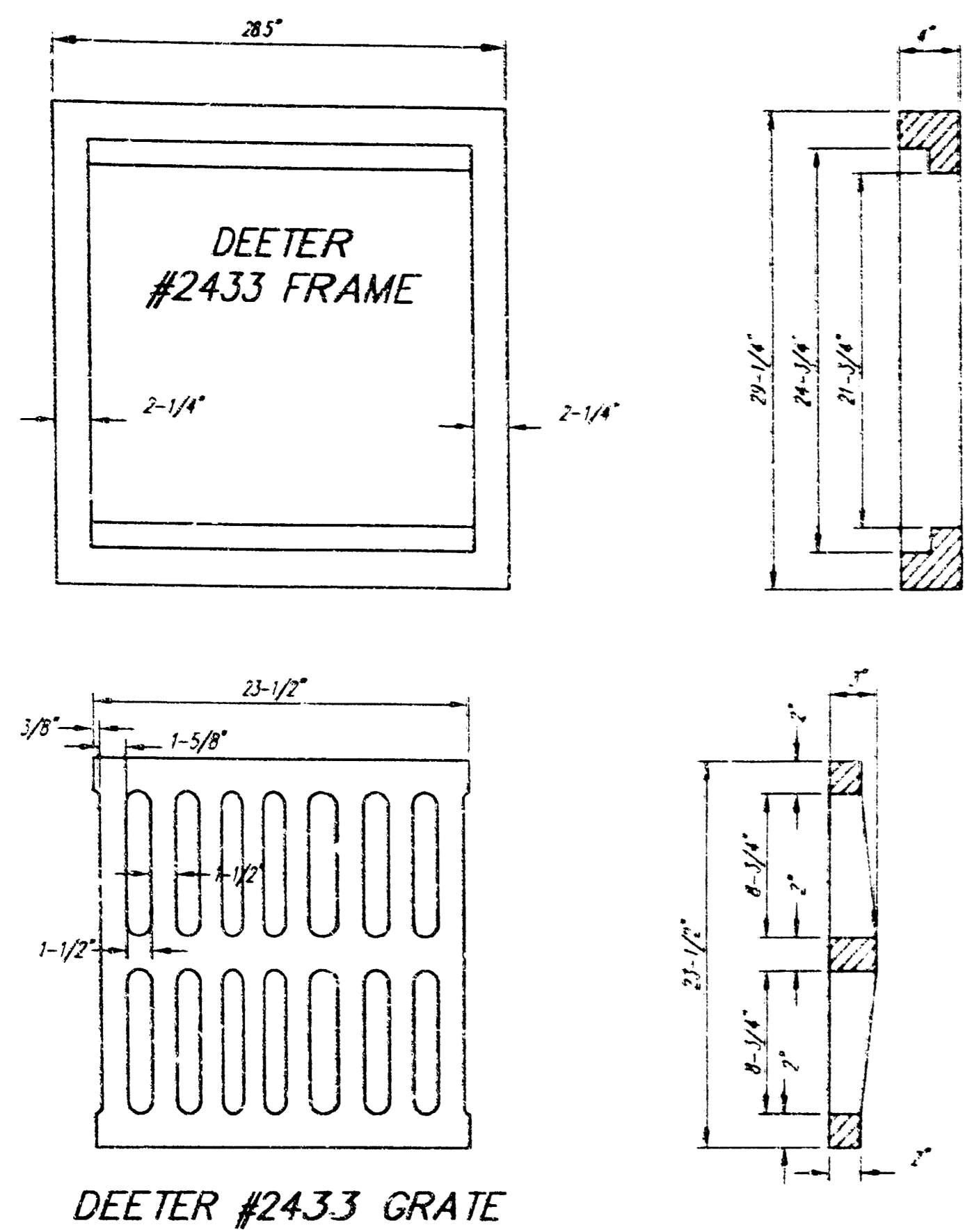
ADDITION AND RENOVATION FOR:  
**AMERICAN HIGHWAYS**  
 Serving AMERICA Safely!  
 4931 S. VICTORIA, WICHITA, KANSAS

**PATRICK W. KOHN**  
 CORPORATE ARCHITECT  
 2200 Parkway Drive, Suite 200  
 Phoenix, AZ 85024  
 Phone: (602) 978-0282 Fax: (602) 978-0280

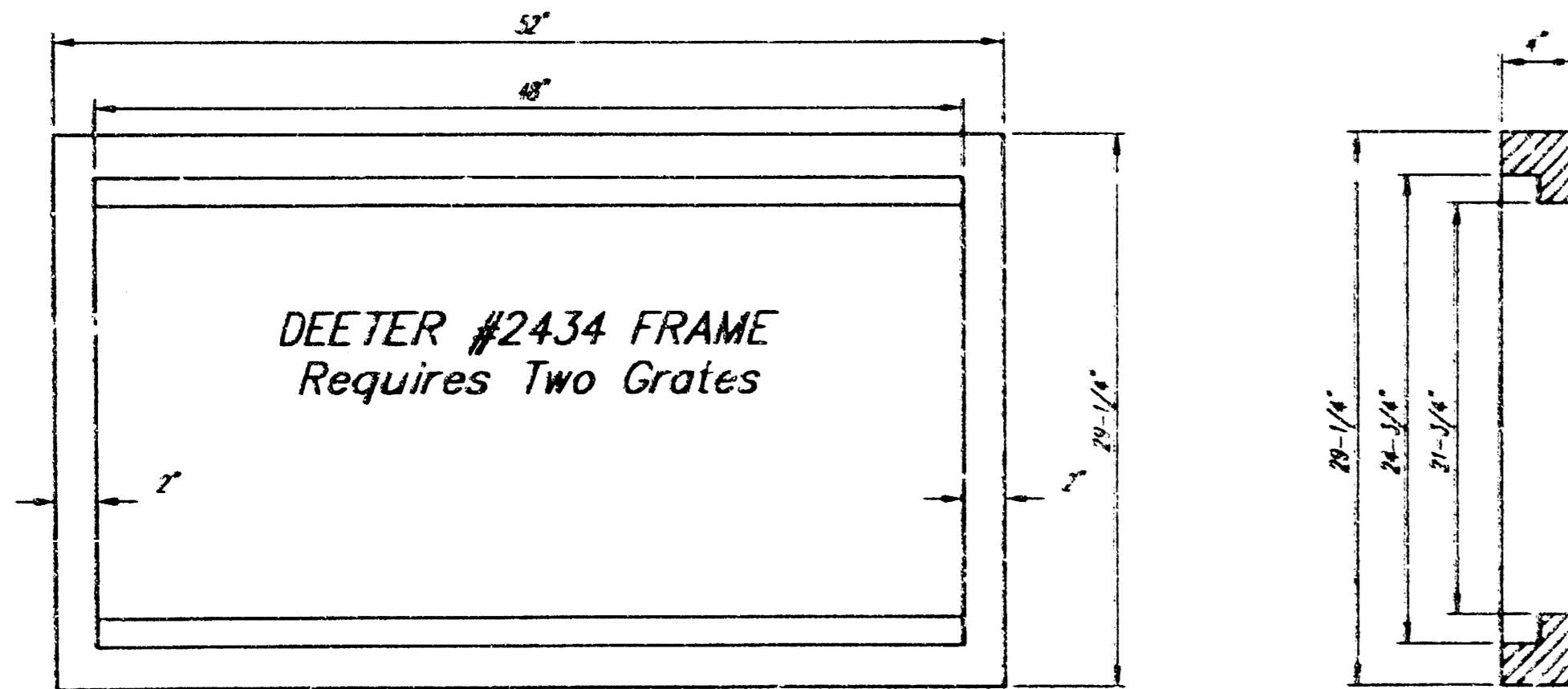
PROFESSIONAL ENGINEER  
 11631  
 10-3-94

DRAWN  
 CMB  
 CHECKED BY:  
 START DATE  
 SEPT 22, 1994  
 SCALE  
 1" = 20'  
 JOB NO.  
 750-WTK-94  
 SHEET  
**C-4**  
 OF SHEETS

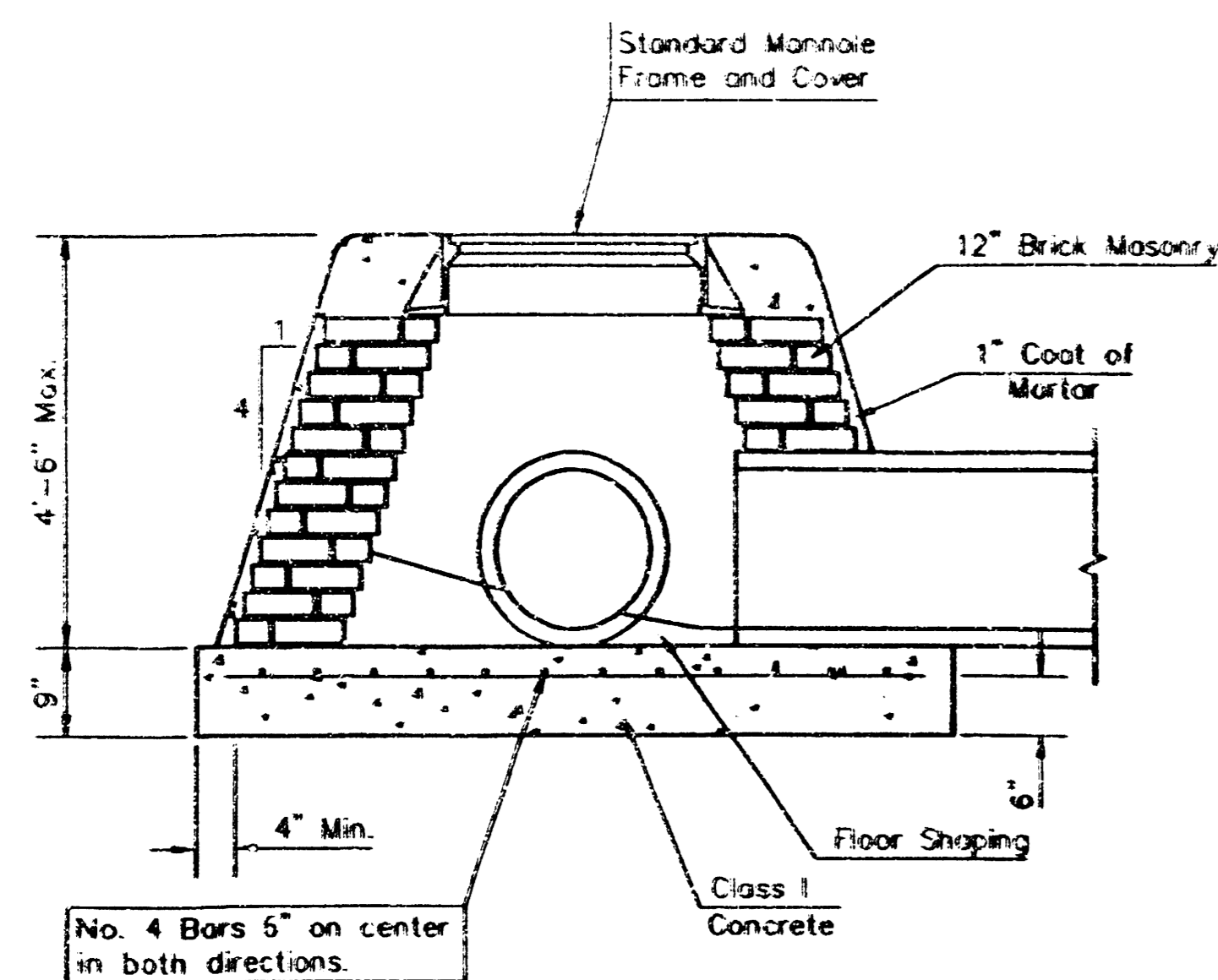
C:\PROJECTS\ACT125\VIA\SRB1.DWG 3/10/94 4:11:34



24" x 24" Frame and Grate Detail



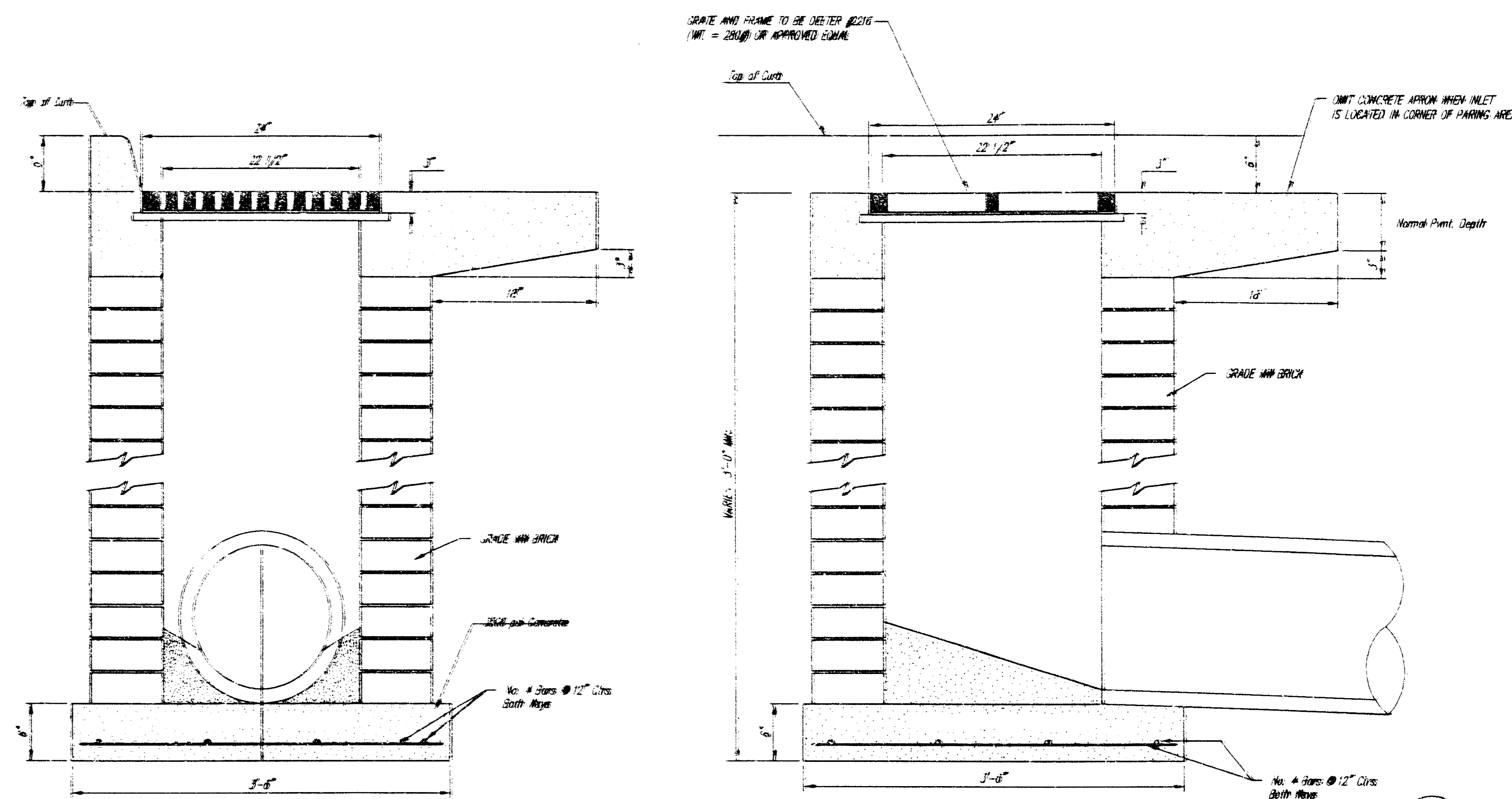
Double 24" x 24" Frame Detail



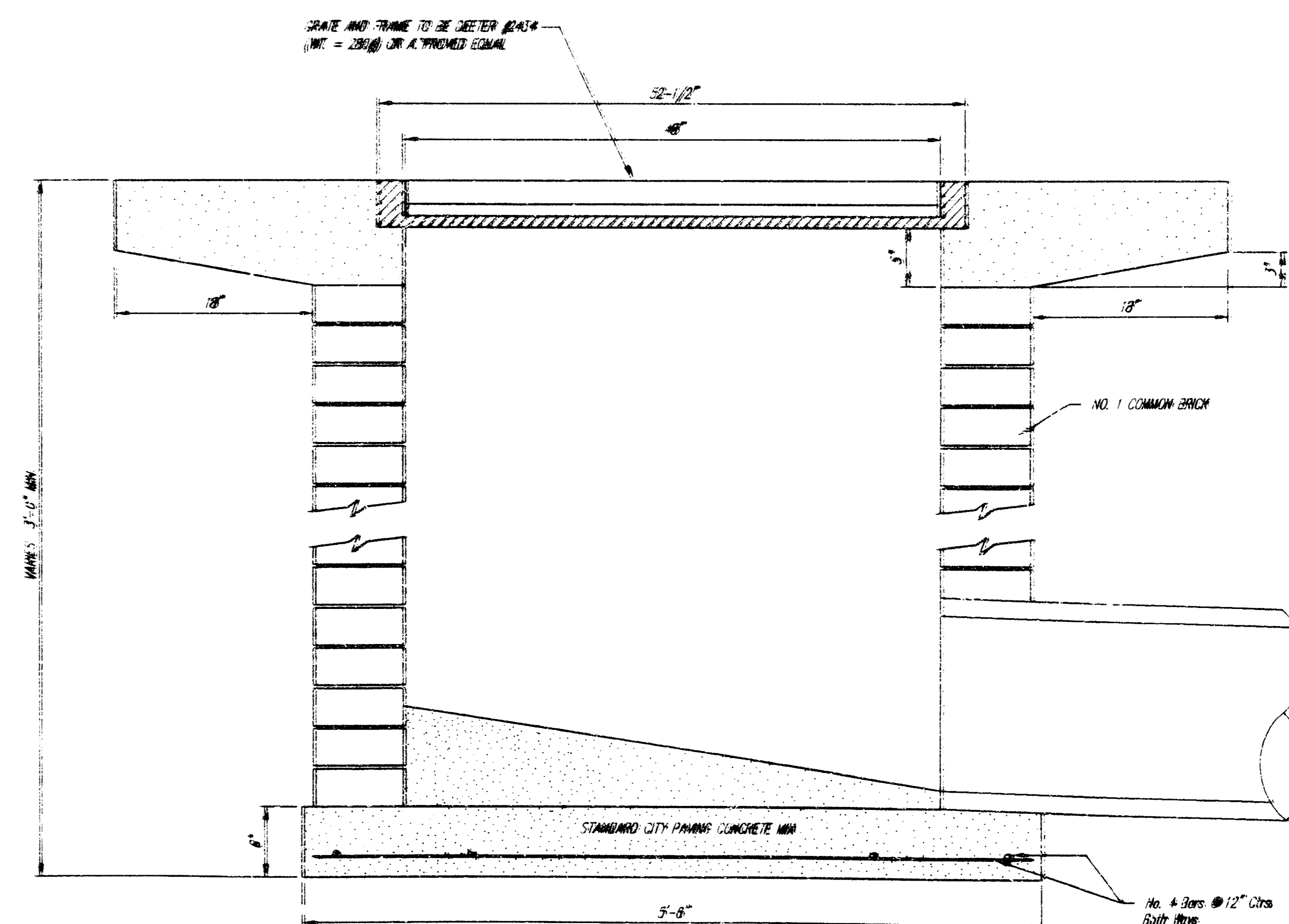
SPECIAL SHALLOW TYPE "B" MANHOLE

**GENERAL NOTES**

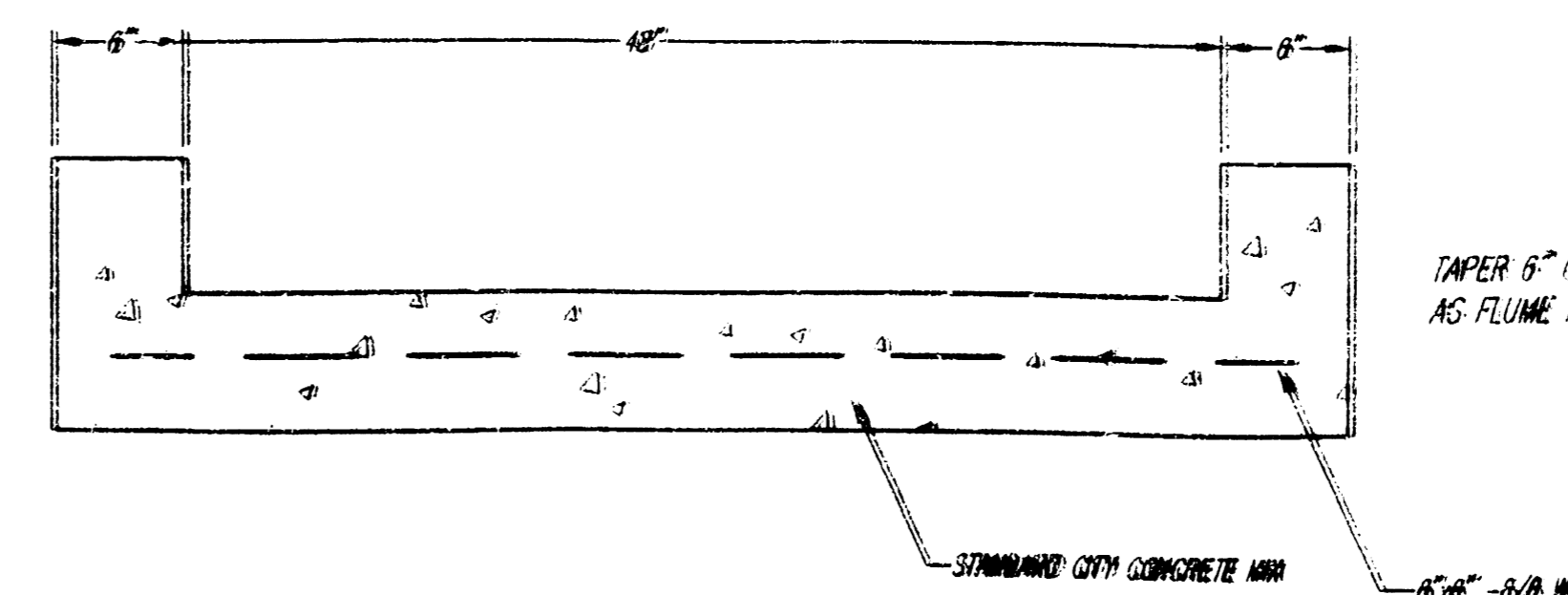
- Mortar used in masonry construction shall be Class III. Concrete used in manhole bases shall be Class I. Mortar shall be placed around the manhole ring as shown on the drawings when manholes are constructed in unpaved areas. Type "A" shallow manholes can be used on sewers when the manhole is not located within public street pavement. Manholes constructed where pipe sizes are smaller than 24" shall have an inside diameter of 4". Manholes constructed where pipe sizes are 24" or larger shall have an inside diameter of 5". Completed manhole shall be without leaks and water light.
- Reinforcing steel shall be installed in the manhole bases and shall consist of no. 4 bars placed on 5" centers in both directions. The manhole base reinforcement shall be placed 5" above the bottom of the manhole base. All costs for furnishing and installing reinforcing steel shall be included in the unit price bid for the manhole.
- The floors of all manholes shall be shaped with flow channels such that the manholes will be self cleaning and free of areas where solids could be deposited as sewage flows through the manhole from all inlet pipes to the outlet pipe. Flow channels shall be formed to match the bottom halves of the inflowing pipes and the outflowing pipe as shown by the drawings. Masonry floors shall have slopes of 3 inches per foot in the areas outside of the flow channels sloped toward the flow channels. Pipes laid through manholes shall have the top half removed to neat lines for the full inside diameter of the manhole. Manhole floors shall then be shaped around the bottom half of the pipe which forms the flow channel.
- Pipes installed within the excavation made for the manhole shall be cradled with concrete to the limits of the manhole excavation. When clay pipe is used, the cradle shall extend to the first joint outside the manhole. The cradle shall be terminated at the clay pipe joint in a manner which will maintain the flexibility of the joint. Cost of cradle within manhole excavation or to clay pipe joints adjacent to manhole shall be included in the unit price bid for the manhole.
- Manhole cover castings and manhole frame castings shall conform to the requirements as indicated in the standard specifications and as shown in the standard detail drawings.
- The crowns of inflowing pipes shall never be set lower than the crown of the outflowing pipe.
- Standard shallow manholes type "A" and "B" shall be paid for at the unit price bid per each for the type and diameter indicated. Standard special shallow manholes type "A" and "B" shall be paid for at the unit price bid per each for the type indicated. All standard shallow manhole diameters will be 4' unless indicated otherwise.
- All brick used in manhole construction shall meet Grade SW of ASTM C832 or C82-87.



SPECIAL DROP INLET DETAIL (SINGLE GRATE)



SPECIAL DROP INLET DETAIL (DOUBLE GRATE)



CONCRETE FLUME DETAIL

DROP INLET DETAILS

REVISIONS	BY

**ADDITION AND RENOVATION FOR:**  
**AMERICAN HIGHWAYS**  
 Serving "AMERICA'S SAFETY"  
 CORPORATION  
 4931 S. VICTORIA, WICHITA, KANSAS

**PATRICK W. BROWN**  
 CORPORATE ARCHITECT  
 1300 Broadway Drive  
 Phone (913) 261-1000

**PROFESSIONAL ENGINEER**  
 LICENSE NO. 10000  
 STATE OF KANSAS

DRAWN: CMB  
 CHECKED BY:  
 START DATE: SEPT 22, 1994  
 SCALE: 1" = 20'  
 JOB NO.: 750-WTK-94  
 SHEET

**C-5**