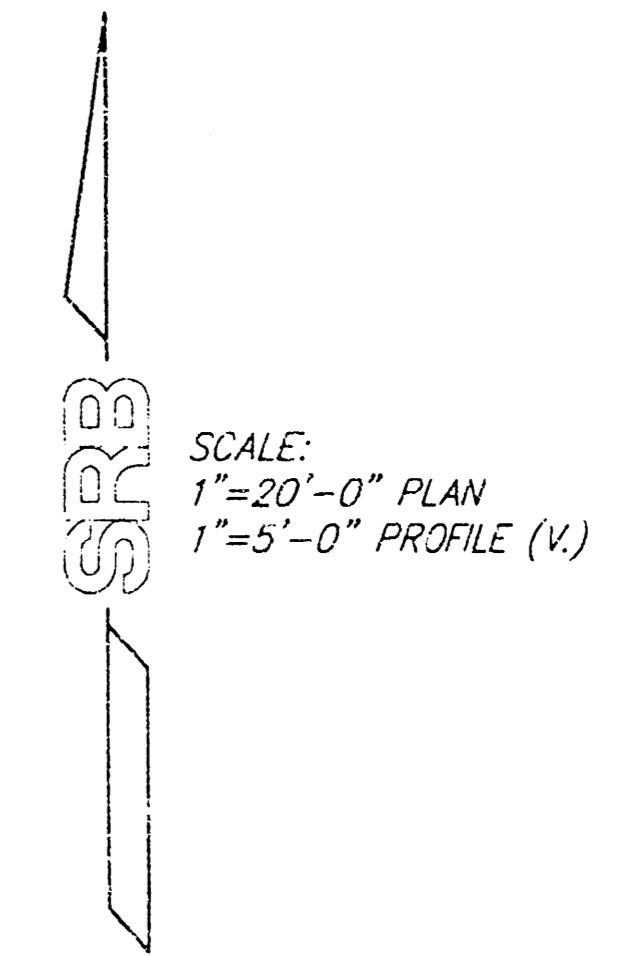
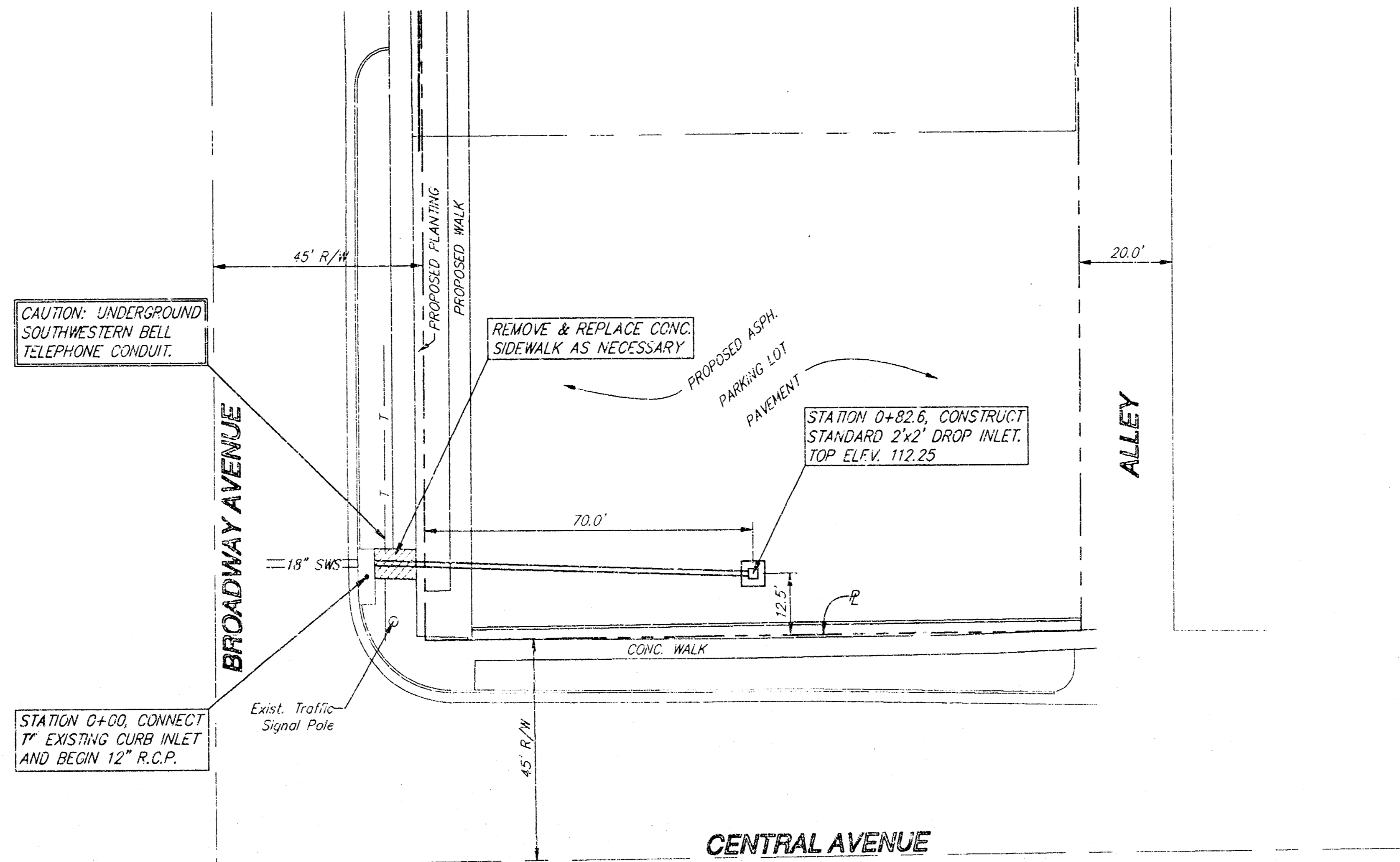


**GENERAL NOTES**

1. All work on this project shall conform to the Standard Specifications for Storm Sewer Construction of the City of Wichita.
2. The Contractor shall be responsible for any costs and arrangements necessary for any adjustment of the Southwestern Bell conduit or cable.
3. All unpaved areas within public right-of-way which may be disturbed by Contractor's operations shall be restored in accordance with City of Wichita Administrative Regulation AR-78.
4. The Contractor shall notify Kansas One-Call (687-2470) a minimum of 24 hours prior to any excavation.

**BENCH MARK**

N.W. cor. bottom concrete step at St. Mary's, Catholic Diocese (S.E. corner of intersection of Broadway and Central).  
Elevation 113.78 City Datum

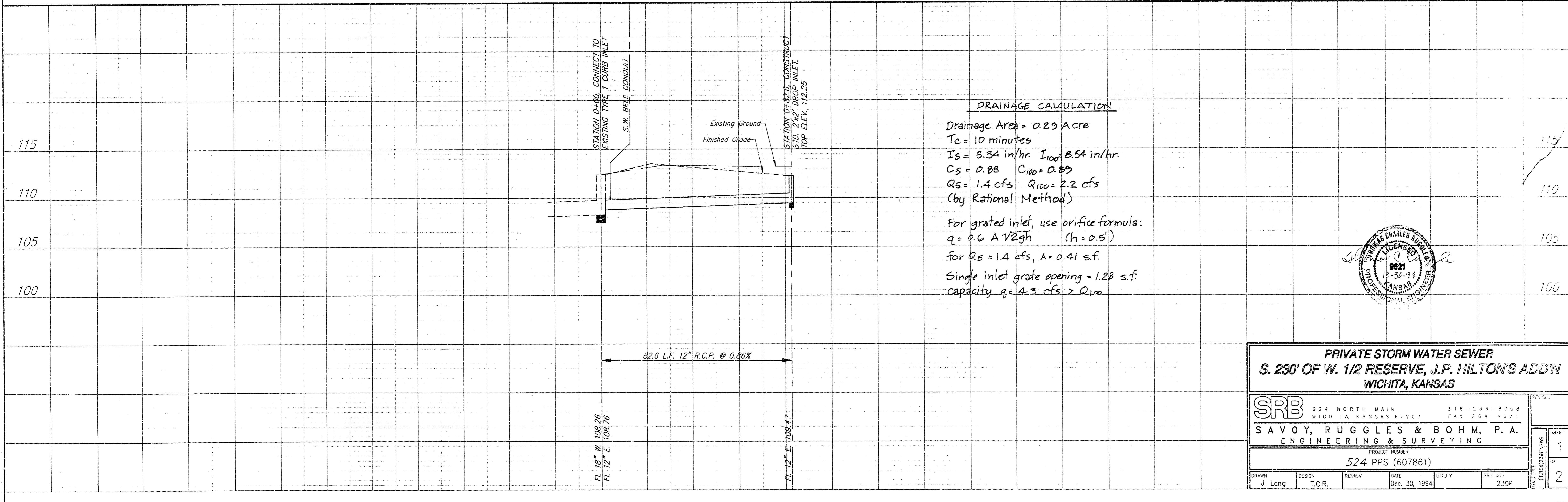


APPROVED AS NOTED  
BY CITY ENGINEER OF WICHITA

Sanitary Sewers \_\_\_\_\_  
Storm Sewers VRH 1/4/95  
Driveway Approaches \_\_\_\_\_  
Water Mains \_\_\_\_\_  
Paving \_\_\_\_\_

NOTE TO CONTRACTORS

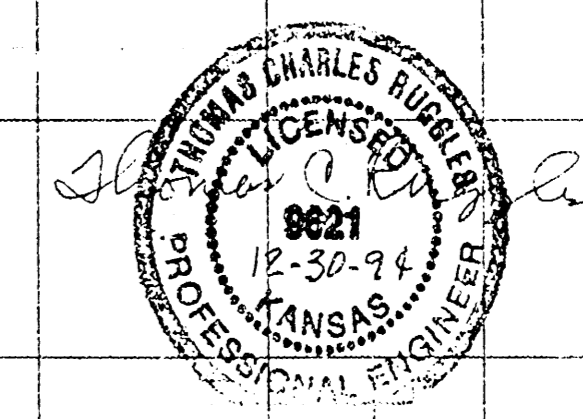
Inspection and testing for this project are to be provided by a Licensed Consulting Engineering Firm under contract with the Owner/Developer. Said inspection to be in accordance with the City of Wichita standard construction engineering practices and certified by a Licensed Professional Engineer. No work shall be performed in dedicated easements or public right-of-way by the Contractor without such inspection, nor shall any work be commenced without written authorization by the City Engineer.



**DRAINAGE CALCULATION**

Drainage Area = 0.29 Acre  
 $T_c = 10$  minutes  
 $I_s = 5.34$  in/hr  $I_{100} = 8.54$  in/hr  
 $C_s = 0.88$   $C_{100} = 0.89$   
 $Q_s = 1.4$  cfs  $Q_{100} = 2.2$  cfs  
 (by Rational Method)

For grated inlet, use orifice formula:  
 $q = 0.6 A \sqrt{2gh}$  ( $h = 0.5'$ )  
 For  $Q_s = 1.4$  cfs,  $A = 0.41$  s.f.  
 Single inlet grate opening = 1.28 s.f.  
 capacity  $q = 4.3$  cfs  $> Q_{100}$



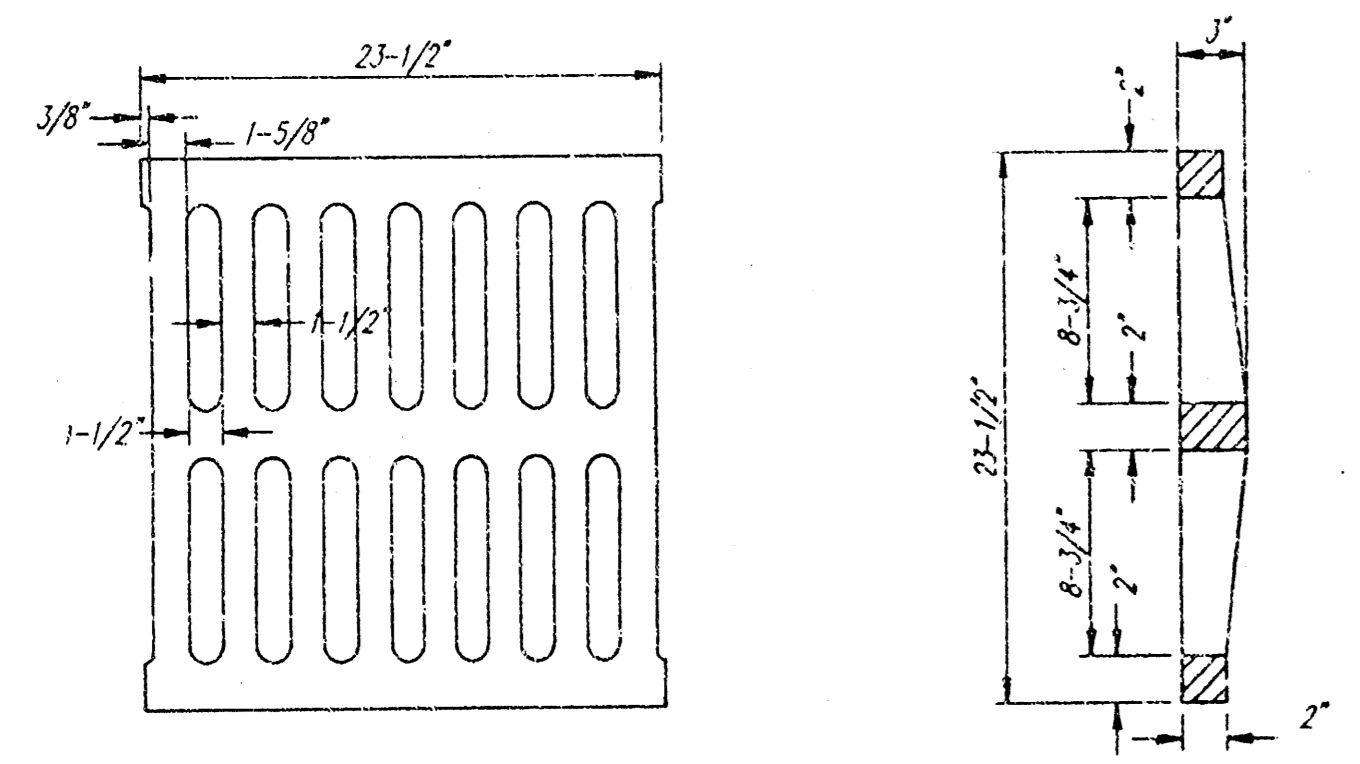
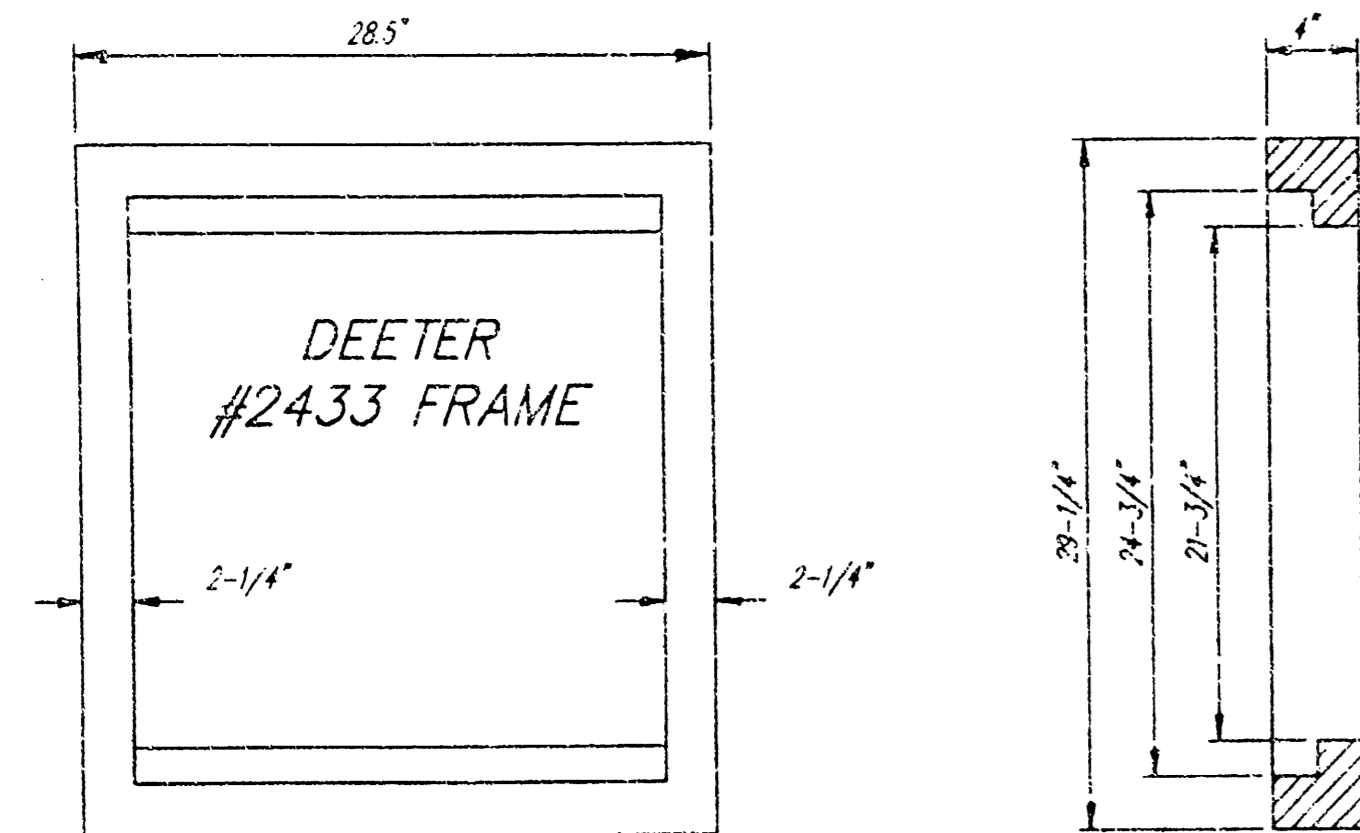
**PRIVATE STORM WATER SEWER**  
**S. 230' OF W. 1/2 RESERVE, J.P. HILTON'S ADD'N**  
**WICHITA, KANSAS**

**SRB** 924 NORTH MAIN WICHITA, KANSAS 67203 316-264-8008  
 SAVOY, RUGGLES & BOHM, P. A. ENGINEERING & SURVEYING

PROJECT NUMBER  
**524 PPS (607861)**

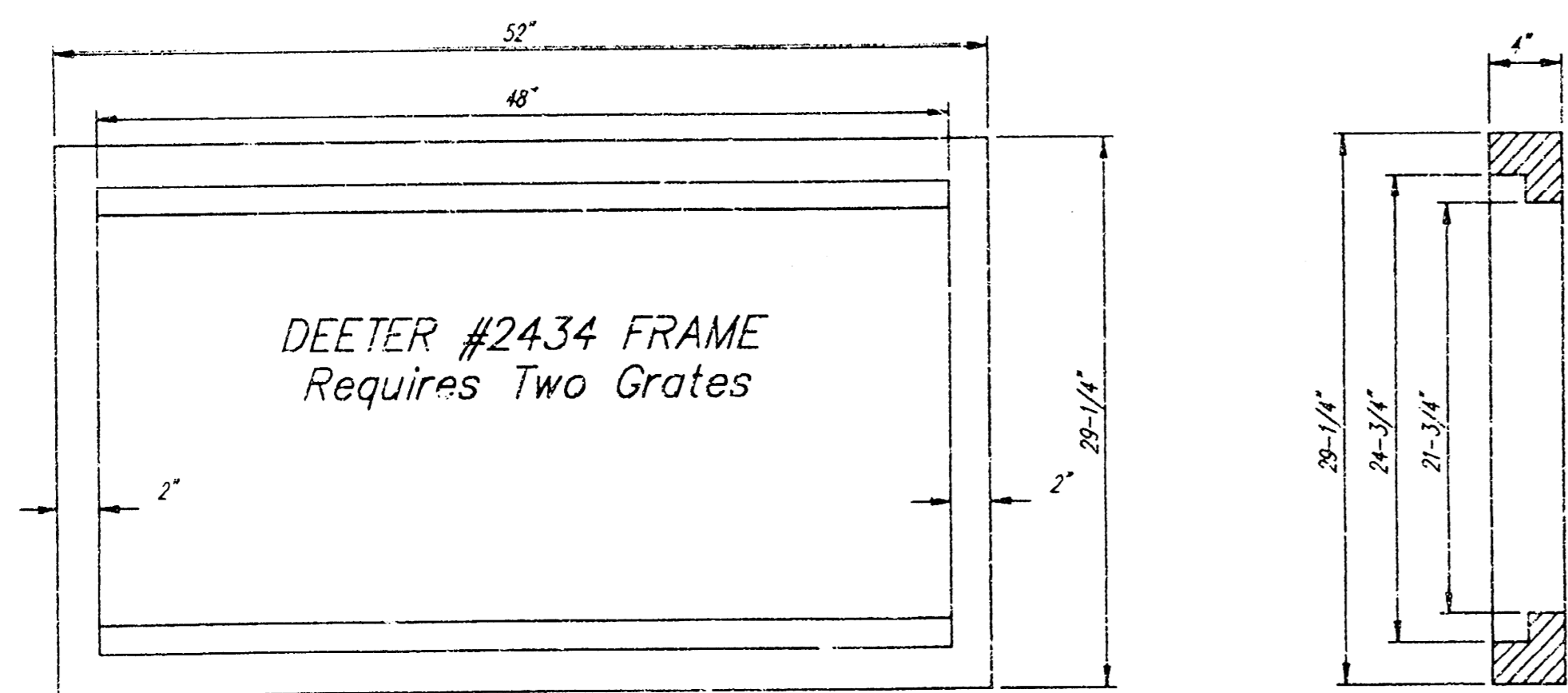
DRAWN J. Long	DESIGN T.C.R.	REVIEW	DATE Dec. 30, 1994	UTILITY	SHR. UNIT 235E
------------------	------------------	--------	-----------------------	---------	-------------------

REVISED SHEET 1 OF 2



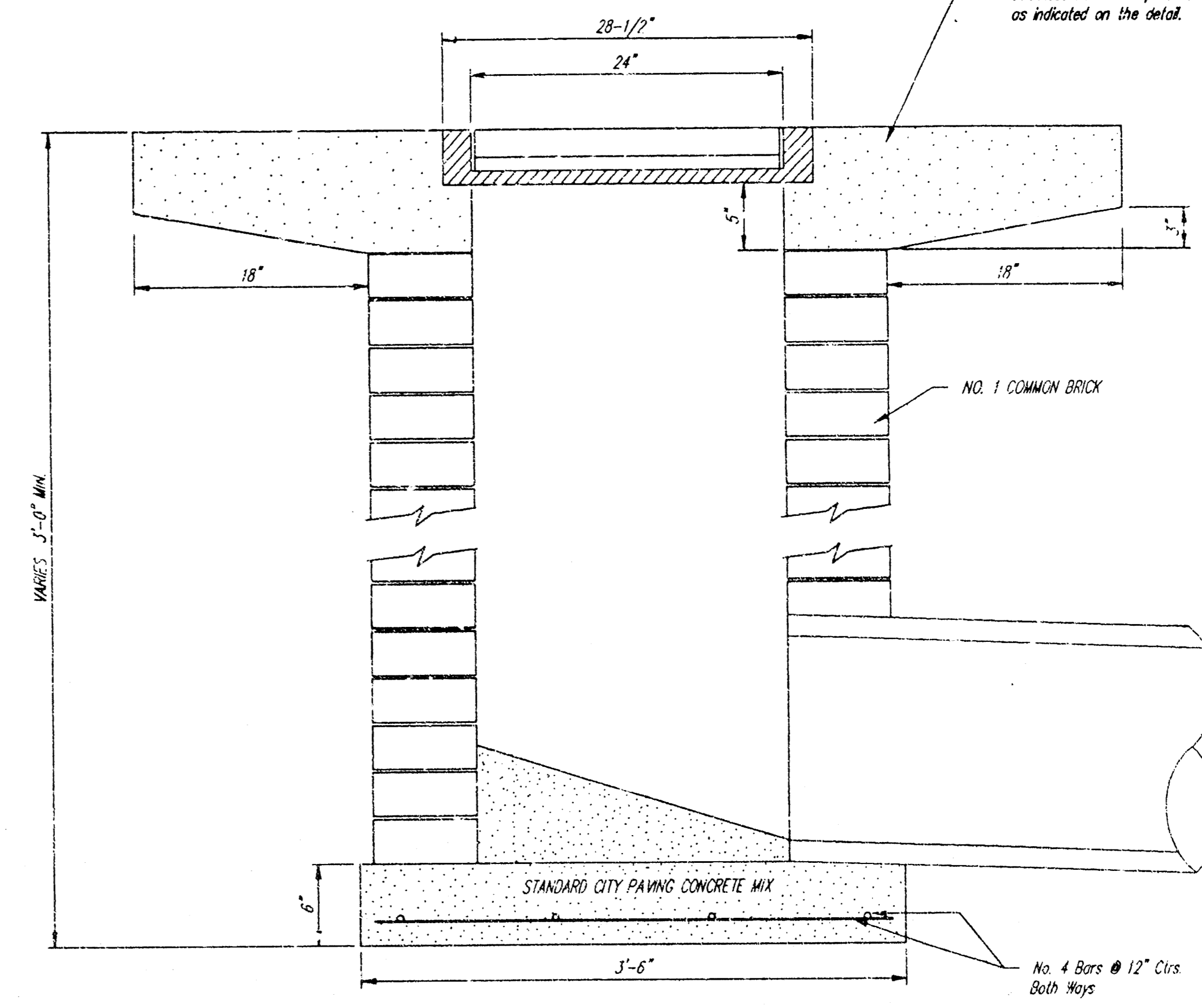
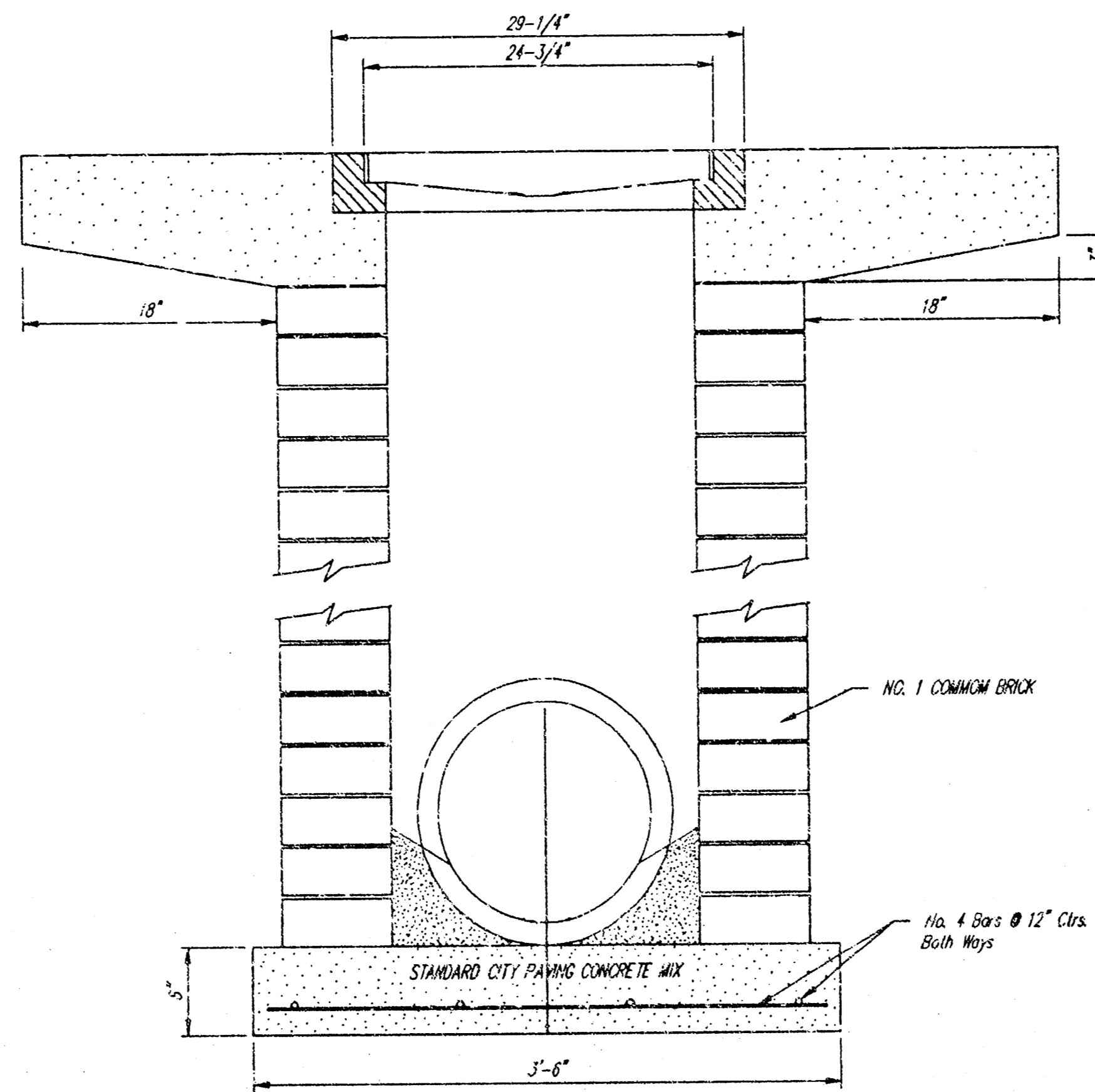
DEETER #2433 GRATE

24" x 24" Frame and Grate Detail

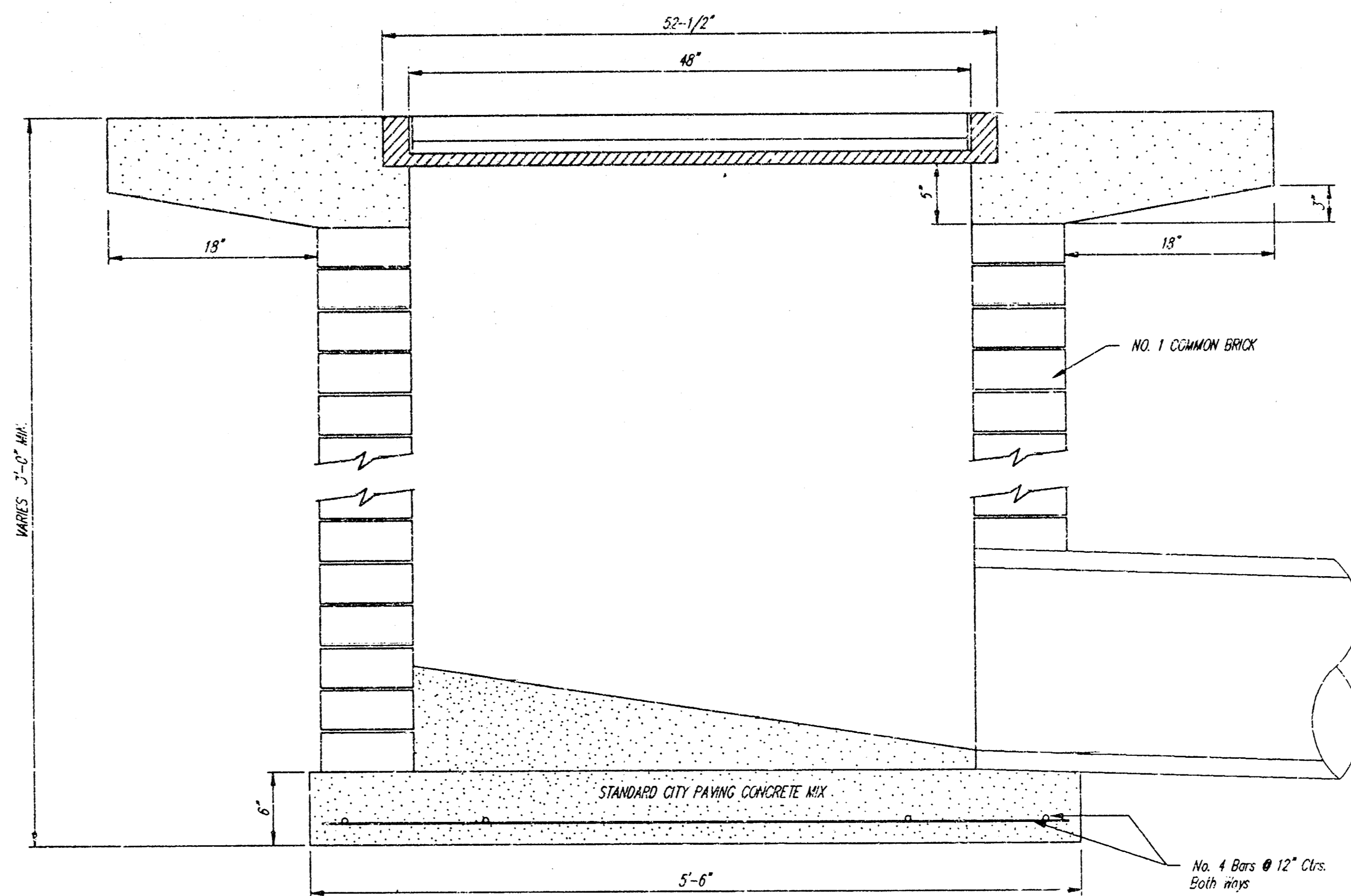


DEETER #2434 FRAME  
Requires Two Grates

Double 24" x 24" Frame Detail



Note: Concrete apron shall be constructed around the inlet when inlet is located in an uncurbed area. Where the inlet is located in pavement, the pavement thickness shall be tapered to the inlet in 16 inches as indicated on the detail.



DROP INLET DETAILS	2
5.24 PPS (607861)	2