

BENCH MARKS

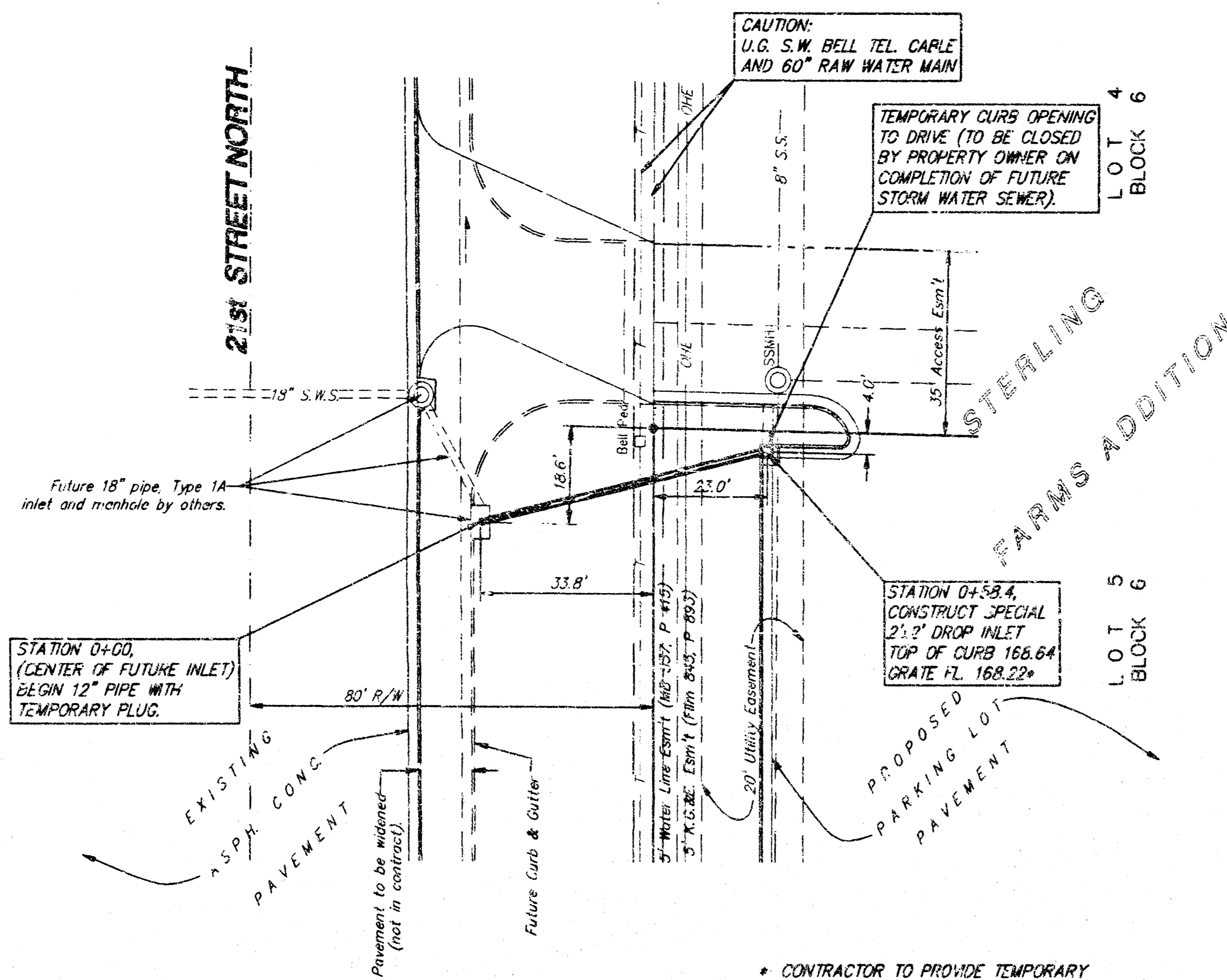
1. "X" Cut on N. edge of San. Sewer MH rim. 24' N. & 10' W. of S.E. corner at S. Block 6, Sterling Farms Add'n Elevation 169.53 City Datum
2. "d" Cut at S.W. Cor. of traffic signal manhole, 6' N. of S.W. prop. corner, 21st & Tyler; Elev. 169.29 City Datum

GENERAL NOTES

1. All work on this project shall conform to the Standard Specifications for Storm Sewer Construction of the City of Wichita.
2. The Contractor shall be responsible for any costs and arrangements necessary for any adjustment of the Southwestern Bell cable.
3. All unpaved areas within public right-of-way which may be disturbed by Contractor's operations shall be restored in accordance with City of Wichita Administrative Regulation AR-78.
4. The Contractor shall notify Kansas One-Call (687-2470) a minimum of 24 hours prior to any excavation.

RUNOFF CALCULATIONS

By Rational Formula: $Q=CIA$
 Impervious Area = 13007 S.F.
 Pervious Area = 2821 S.F.
 D.A. (to Storm Sewer) = 0.41 ac.
 $C_{pervious} = 0.95$
 $C_{pervious} = 0.65$
 $C_{weighted} = 0.88$
 Assume time of concentration = 10 min.
 $t_s = 3.34 \text{ in./hr.}$ $t_{100} = 8.54 \text{ in./hr.}$
 $Q_s = 2.2 \text{ cfs}$ $Q_{100} = 3.6 \text{ cfs}$

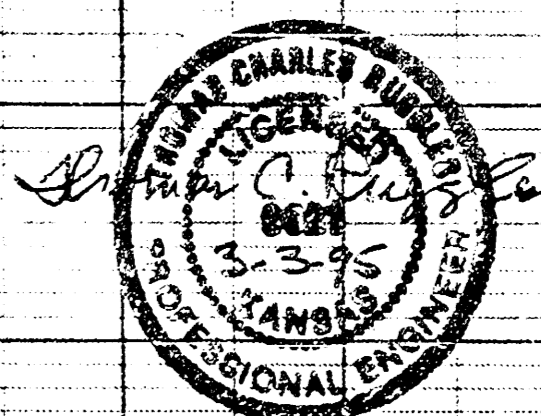
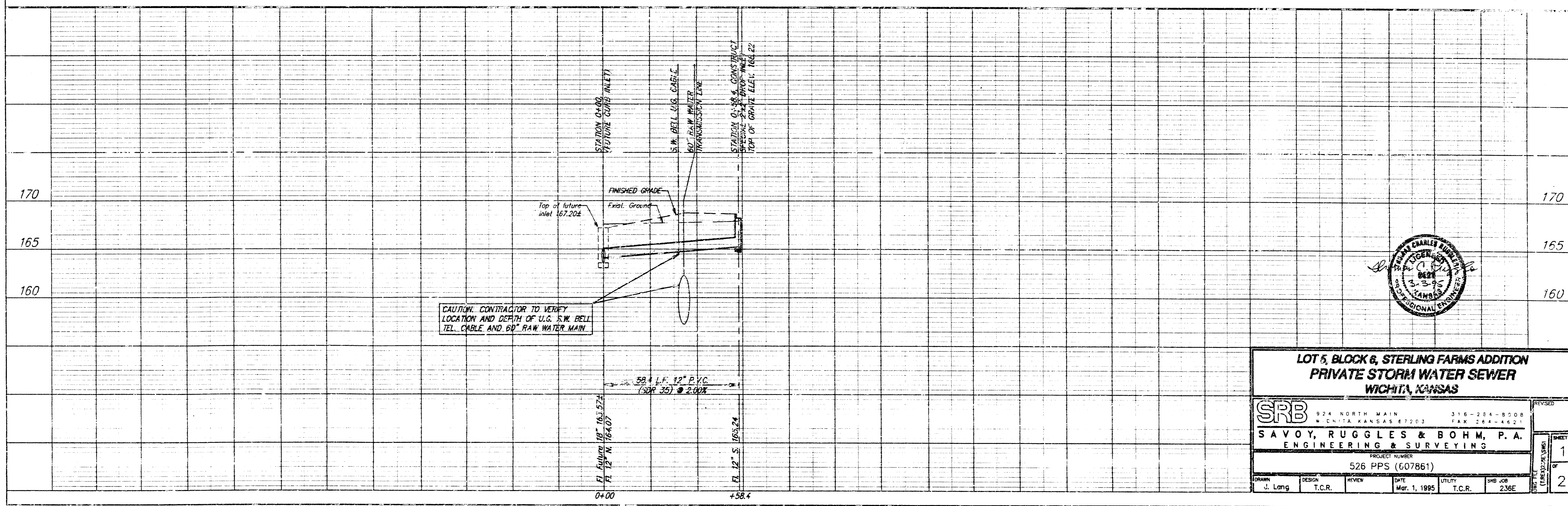
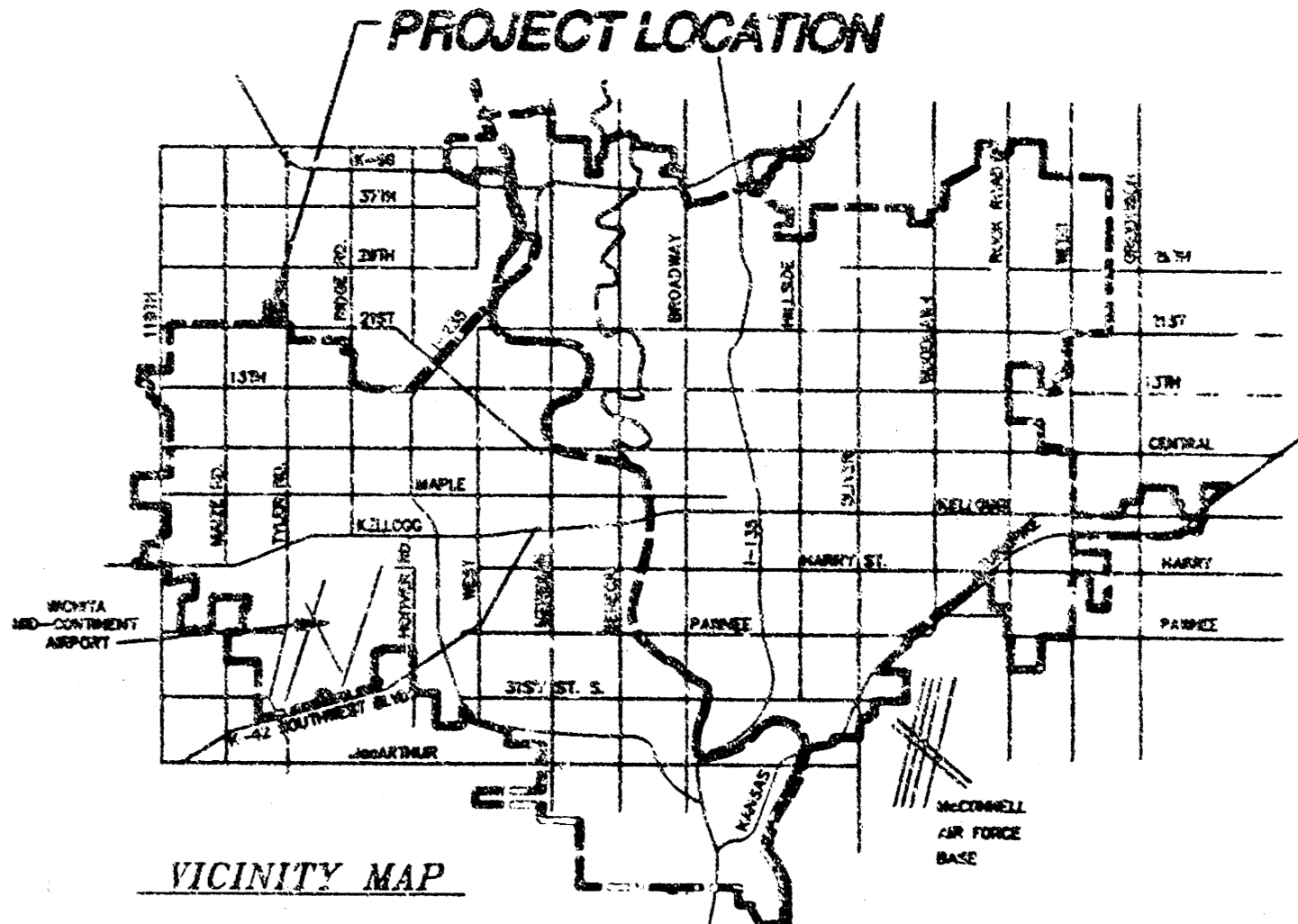


SRB
 SCALE:
 1"=20' PLAN
 1"=5' PROFILE (V.)

APPROVED AS NOTED
 BY CITY ENGINEER OF WICHITA

Sanitary Sewers _____
 Storm Sewers VRH 3/7/95
 Driveway Approaches _____
 Water Joins _____
 Paving _____

NOTE TO CONTRACTORS
 Inspection and testing for this project are to be provided by a Licensed Consulting Engineering Firm under contract with the Owner/Developer. Said inspection to be in accordance with the City of Wichita standard construction engineering practices and certified by a Licensed Professional Engineer. No work shall be performed in dedicated easements or public right-of-way by the Contractor without such inspection, nor shall any work be commenced without written authorization by the City Engineer.



**LOT 5, BLOCK 6, STERLING FARMS ADDITION
 PRIVATE STORM WATER SEWER
 WICHITA, KANSAS**

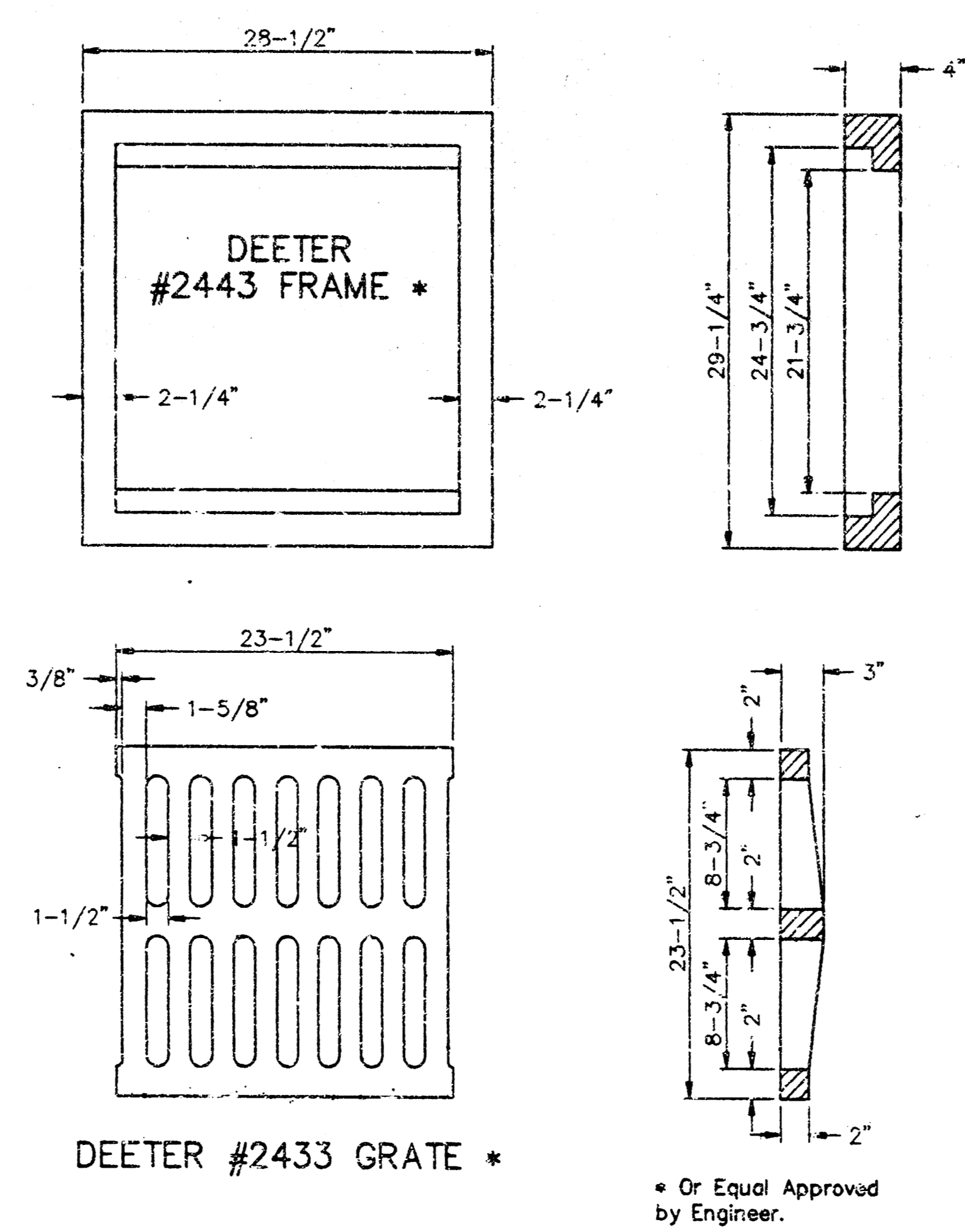
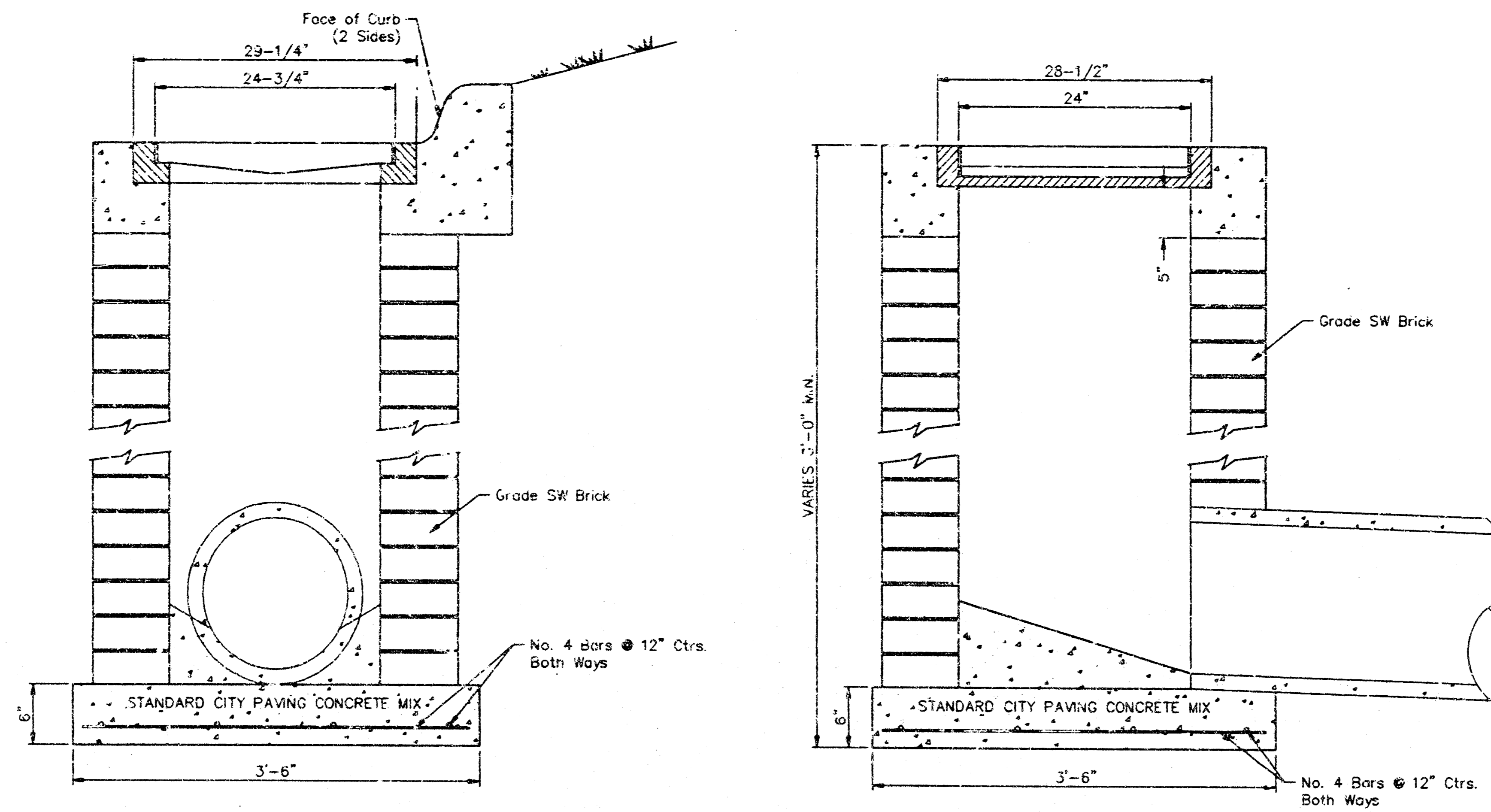
SRB 924 NORTH MAIN 316-254-8008
 WICHITA, KANSAS 67203 FAX 264-4621

SAVOY, RUGGLES & BOHM, P.A.
 ENGINEERING & SURVEYING

PROJECT NUMBER
 526 PPS (607861)

DRAWN	DESIGN	REVIEW	DATE	UTILITY	SMB JOB
J. Lang	T.C.R.		Mar. 1, 1995	T.C.R.	236E

REVISIONS
 SHEET 1 OF 2



24" x 24" FRAME AND GRATE DETAIL

**LOT 5, BLOCK 8, STERLING FARMS ADDITION
2'x2' SPECIAL DROP INLET
WICHITA, KANSAS**

SRB		924 NORTH MAIN WICHITA, KANSAS 67203	316-264-8008 FAX 264-4023	REVISED
SAVOY, RUGGLES & BOHM, P. A. ENGINEERING & SURVEYING				SHEET 2
PROJECT NUMBER 526 PPS (607861)				OF 2
DRAWN J. Lang	DESIGN T.C.R.	REVIEW	DATE Mar. 1, 1995	UTILITY T.C.R.
		JOB JOB 238E		

