

Benchmark:

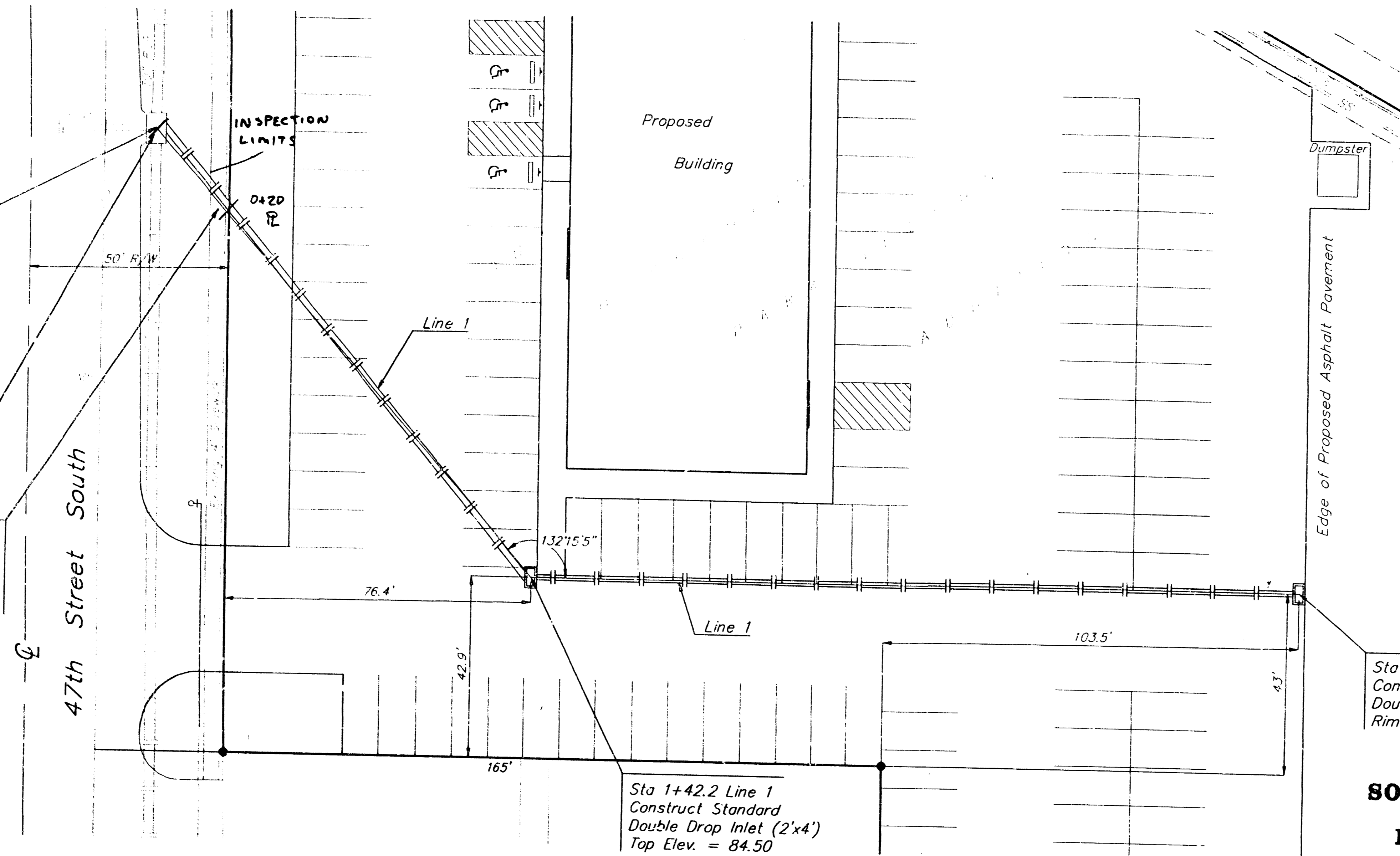
"□" Cut in Top of N.W. Corner of Catch Basin Located 97' East and 31' South of the Centerlines of 47th Street South and Hydraulic.

Elevation = 84.29 City Datum

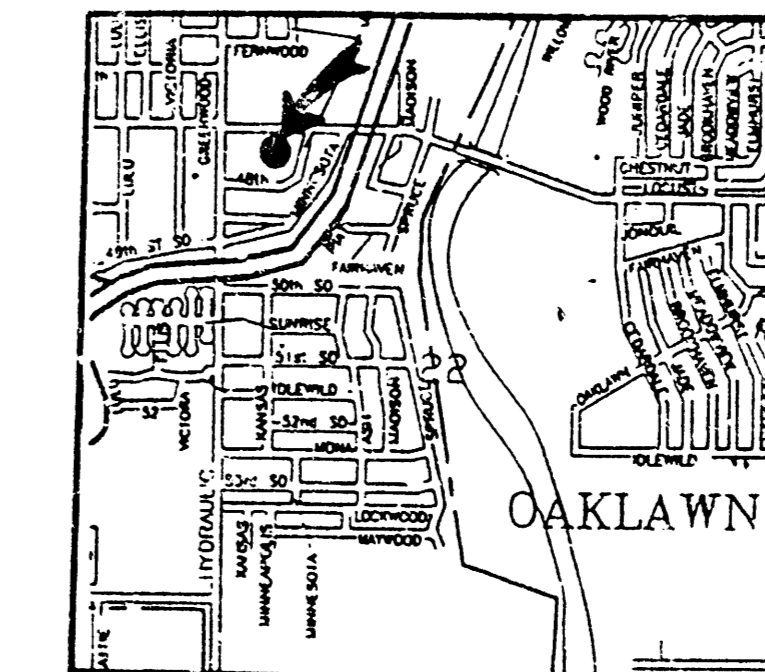
Sta 0+00 Begin Line 1 Contractor to Connect 18" PVC to Existing Inlet and Extend 18" PVC Southwest.

Contractor to Verify Flow of Existing Inlet Prior to Construction

Contractor to Remove and Replace Concrete Sidewalk as Necessary to Facilitate Construction. Cost to be Incidental to Project Cost.



Scale: Horizontal 1" = 20'
Vertical 1" = 5'
● = Iron



A = 1.34 Acres
C_d = 0.90
Q_d = 5.50 CFS

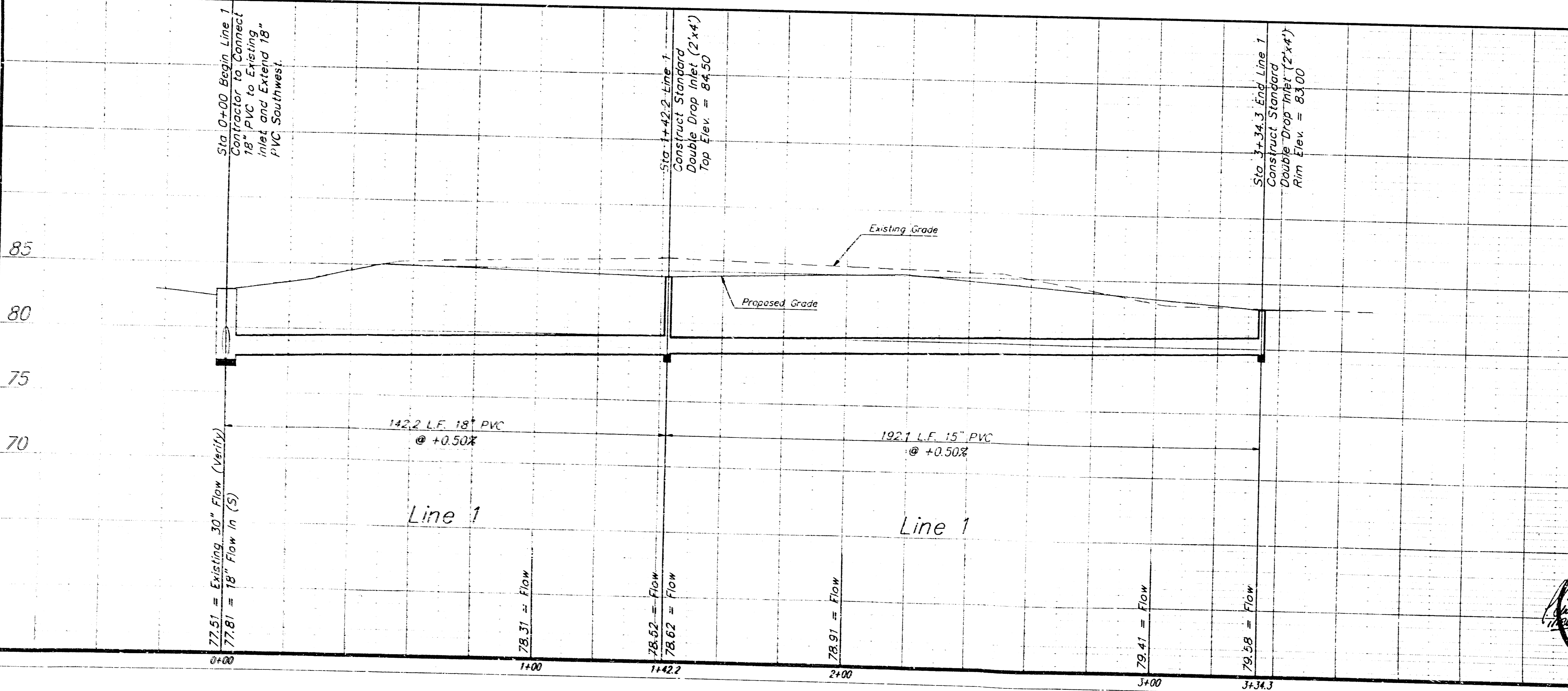
STORM SEWER EXTENSIONS TO SERVE SOUTH HYDRAULIC PARK SECOND ADDITION CITY OF WICHITA, KANSAS PRIVATE PROJECT NO. - 528 PPS (607861) CITY ENGINEER - MICHAEL LINDEBAK

INDEX

Storm Sewer Plan/Profile	1
Standard Drop Inlet Detail	2

GENERAL NOTES

- Contractor will be required to provide notice to utility companies a minimum of twenty-four (24) hours prior to any excavation, as follows:
 Kansas One-Call 687-2410
 The Contractor must notify the following in case of an emergency:
 Cablevision 262-4270
 or 263-2061
 K.P.L. Gas Service Company 383-8650
 Kansas Gas & Electric Company 383-8600
 Arko Gas Company 942-8350
 Southwestern Bell Telephone Company 1-571-2611
 City of Wichita Water Department 268-4908
 City of Wichita Sewer Department 268-4071
- Exist. utilities and their locations, as shown on the plans, represent the best information obtainable for design. Location information has been obtained from the various utility companies and is either from company record drawings or company-provided field locations. The Contractor will be required to work around existing utilities which do not conflict with proposed construction.
- The contractor to verify utility locations prior to construction of this project.
- The Contractor shall be responsible for preserving property lines. The Contractor will be required to re-establish any property lines which are damaged or destroyed by his construction operations. Such lines shall be re-established by a licensed land surveyor in accordance with state laws.

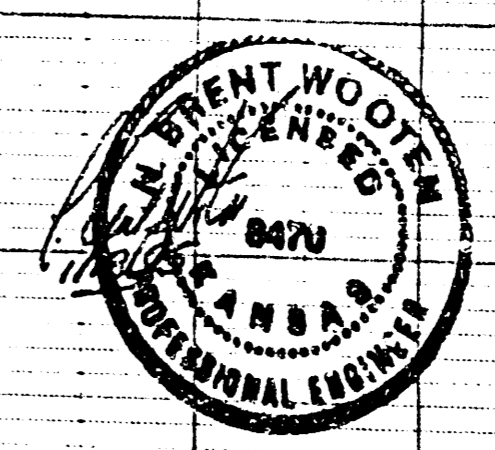


APPROVED AS NOTED
BY CITY ENGINEER OF WICHITA

Sanitary Sewers _____
 Storm Sewers VRH 1/18/95
 Driveway Approaches _____
 Water Mains _____
 Paving _____

NOTE TO CONTRACTORS
 Inspection and testing for this project is to be provided by a Licensed Consulting Engineering Firm under contract with the Owner/Developer. Said inspection to be in accordance with the City of Wichita standard construction engineering practices and certified by a Licensed Professional Engineer. No work shall be performed in dedicated easements or public right-of-way by the contractor without such inspection or public right-of-way by the City Engineer. All Construction and Materials shall comply with the City of Wichita Specifications and Standards (on file and available in the City Engineer's Office).

BOOKED
D-3
M-6
2/22/96



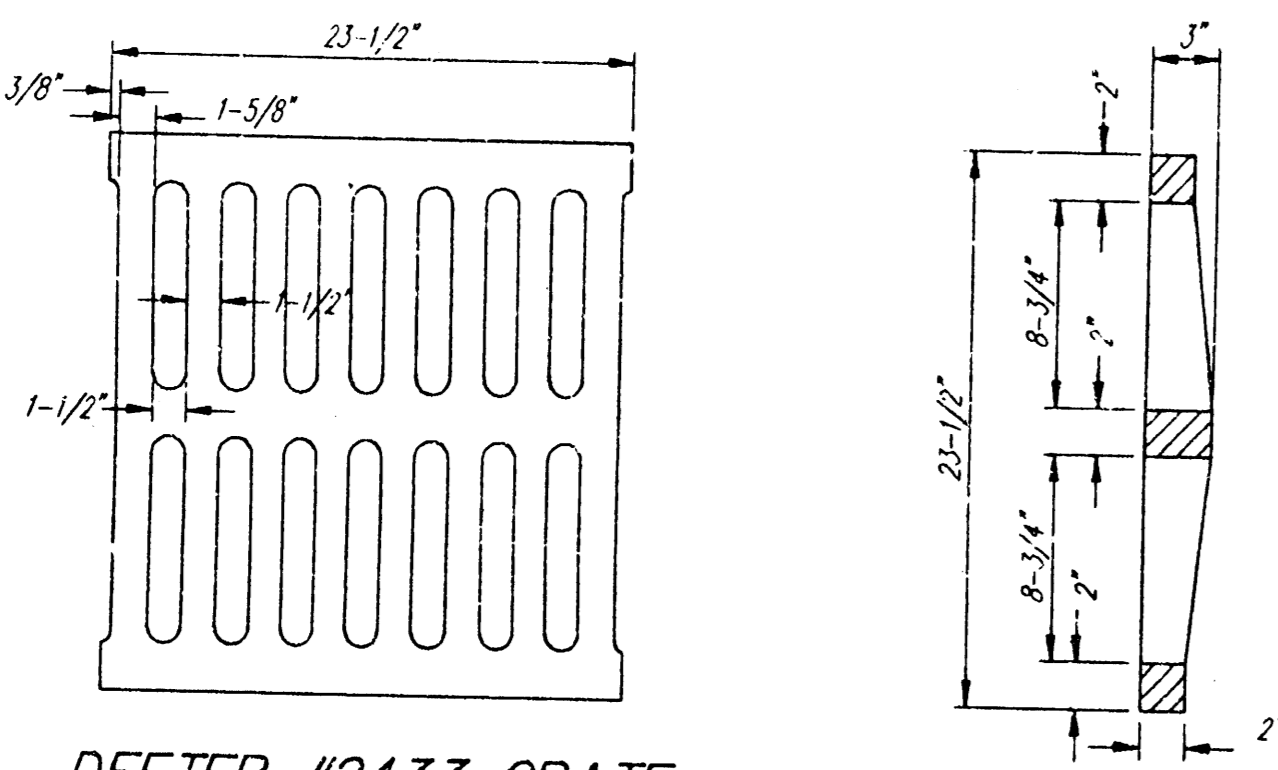
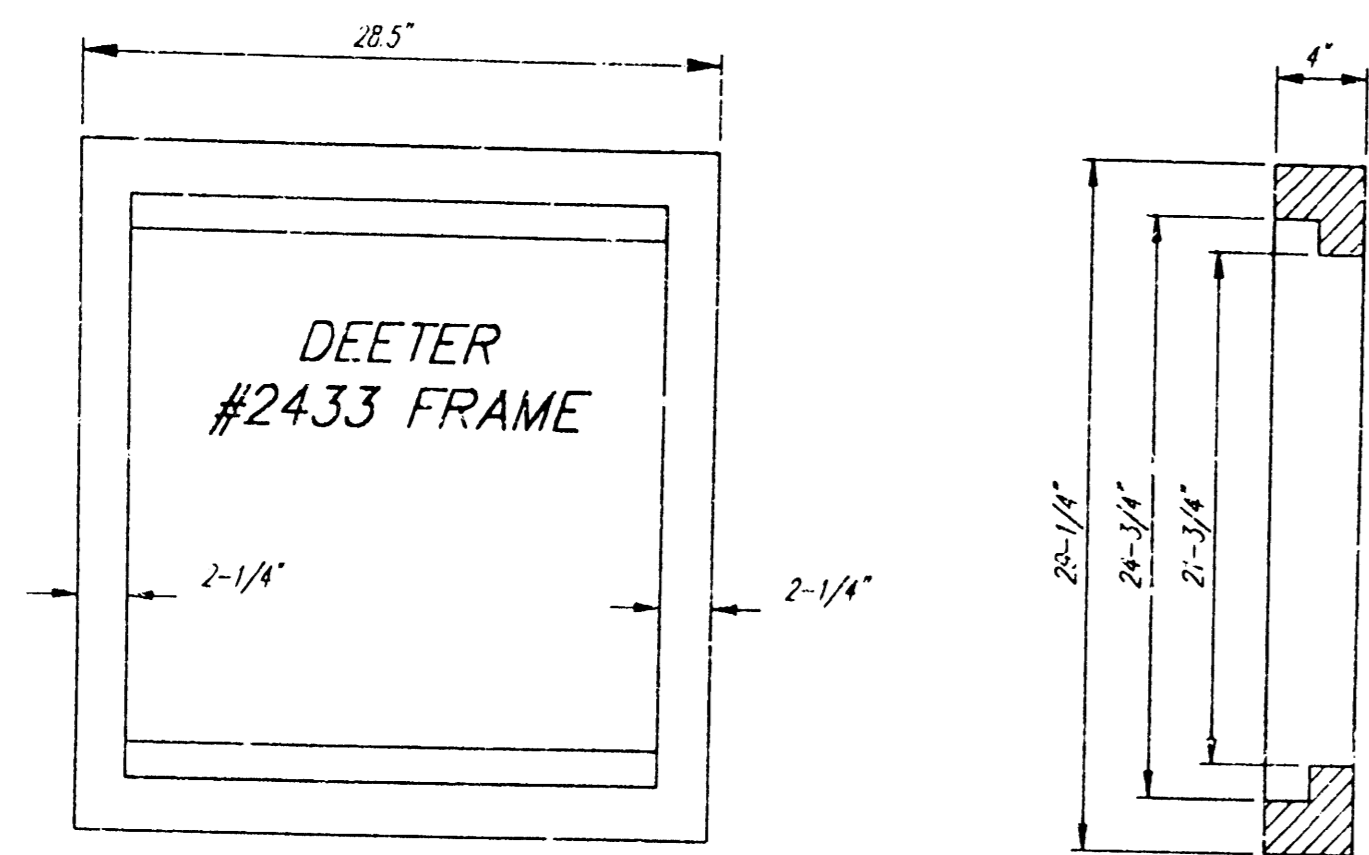
AS BUILT PER PLAN 9FB

AMVETS POST #36
STORM SEWER PLAN/PROFILE
 47TH ST. & HYDRAULIC WICHITA, KS

BAUGHMAN COMPANY P.A.
 ENGINEERING, SURVEYING & PLANNING
 316-262-7271 • 315 ELLIS • WICHITA, KANSAS 67211

PROJECT NUMBER
528 PPS (607861)

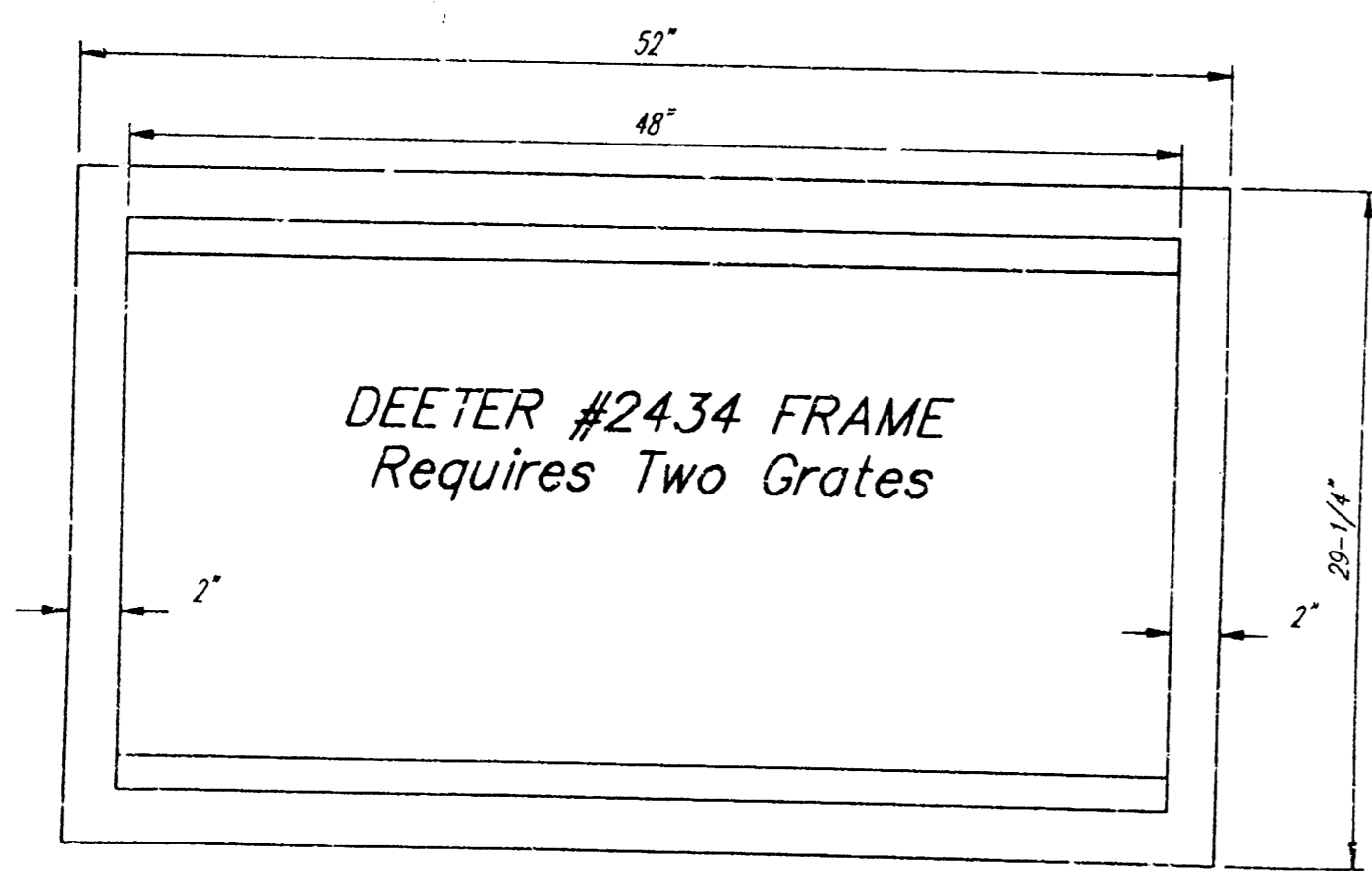
DESIGN: NSW DRAWN: DMV APPROVED: DATE: 1-16-95 SCALE: NOTED SHEET: 1 OF 2



DEETER #2433 GRATE

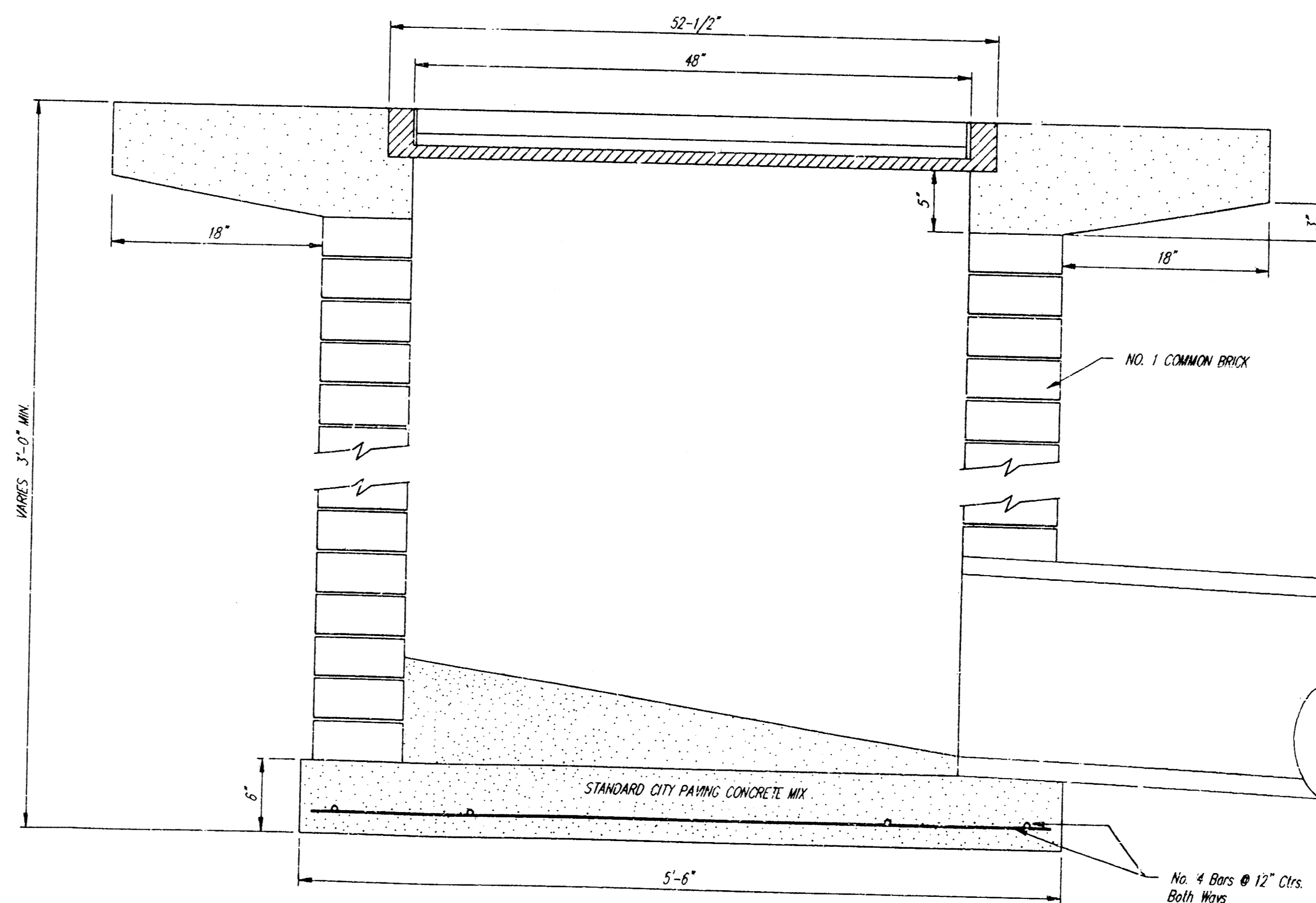
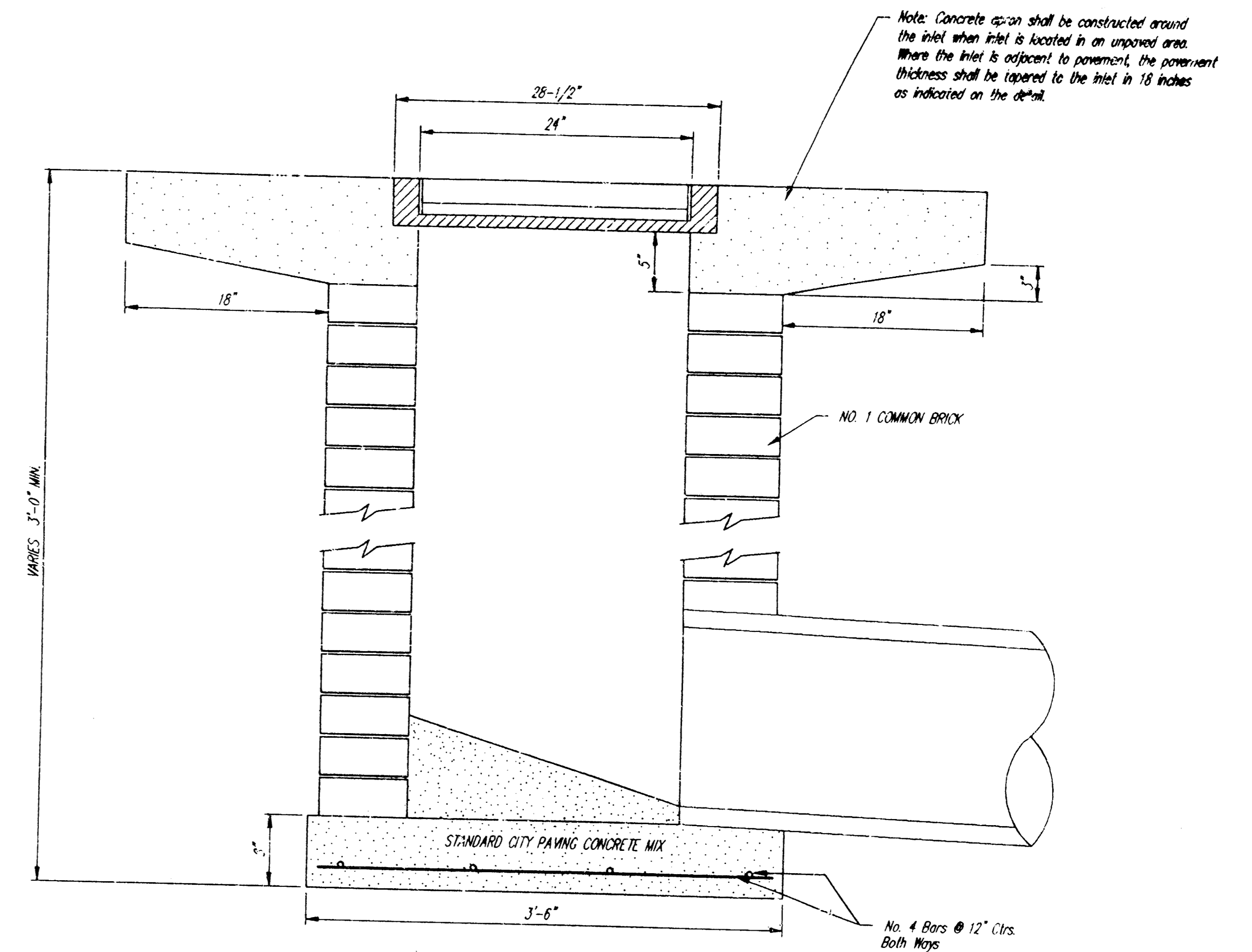
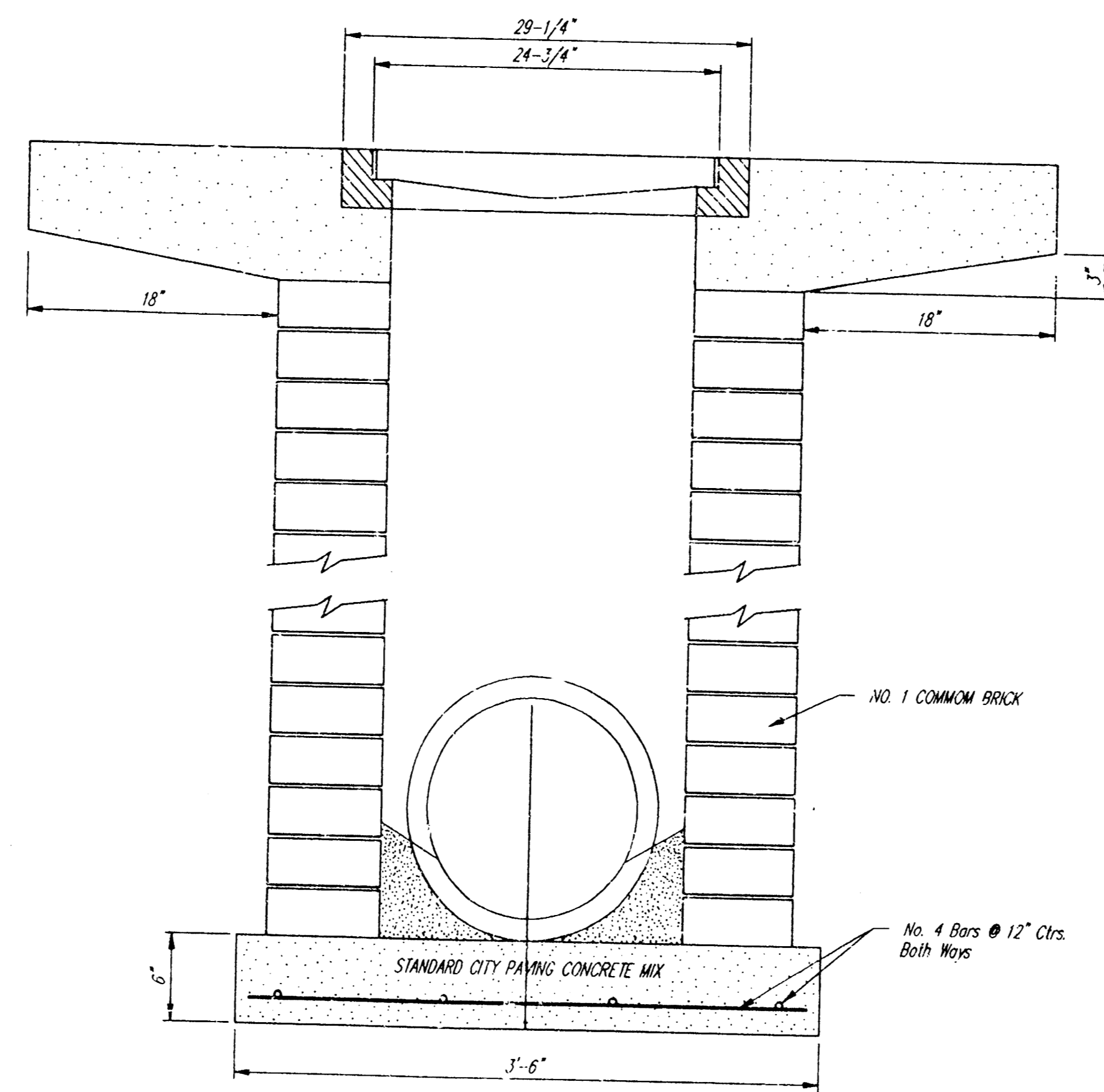
24" x 24" Frame and Grate Detail

NOTE: Grates shall be imprinted on the top surface with "CITY OF WICHITA" using letters at least 1" in height. Other marking methods may be approved by the engineer.



DEETER #2434 FRAME
Requires Two Grates

Double 24" x 24" Frame Detail



DROP INLET DETAILS
M.E. Lindebak, City Engineer
City of Wichita, Kansas

Project Number
528 PPS (607861)

2
2