

GENERAL NOTES

- Contractor will be required to provide notice to utility companies a minimum of twenty-four (24) hours prior to any excavation, as follows:
 Kansas One-Call 687-2470
 The Contractor must notify the following in case of an emergency:
 Oklabvision 262-4270/263-2061
 K.P.L. Gas Service Company 383-8650
 Kansas Gas & Electric Company 383-8600
 Arka Gas Company 942-8350
 Southwestern Bell Telephone Co. 1-571-2611
 City of Wichita Water Department 268-4908
 City of Wichita Sewer Department 268-4671
- Exist. utilities and their locations, as shown on the plans, represent the best information obtainable for design. Location information has been obtained from the various utility companies and is either from company record drawings or company-provided field locations. The Contractor will be required to work around existing utilities which do not conflict with proposed construction.
- The Contractor to verify utility locations prior to construction of this project.
- The Contractor shall be responsible for preserving property lines. The Contractor will be required to re-establish any property lines which are damaged or destroyed by his construction operations. Such lines shall be re-established by a licensed land surveyor in accordance with state laws.

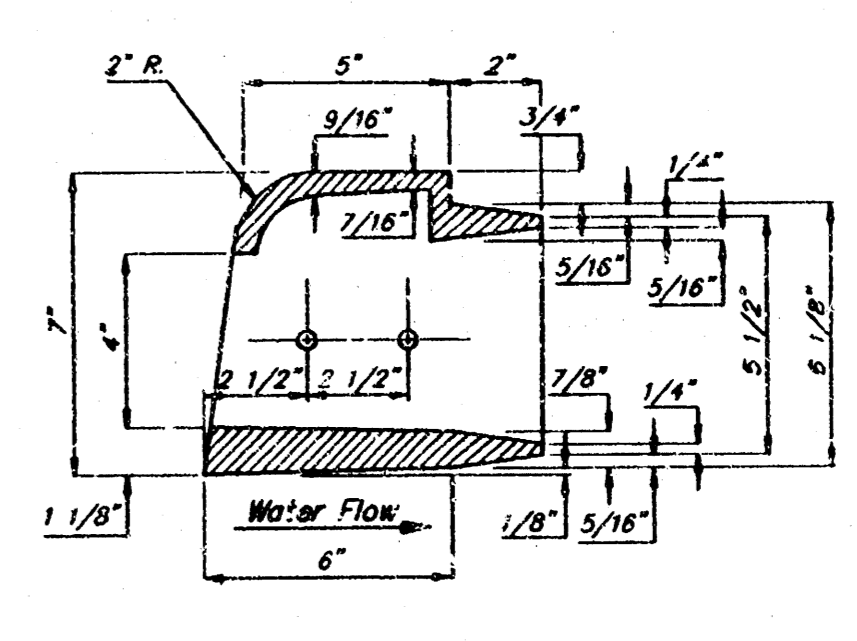
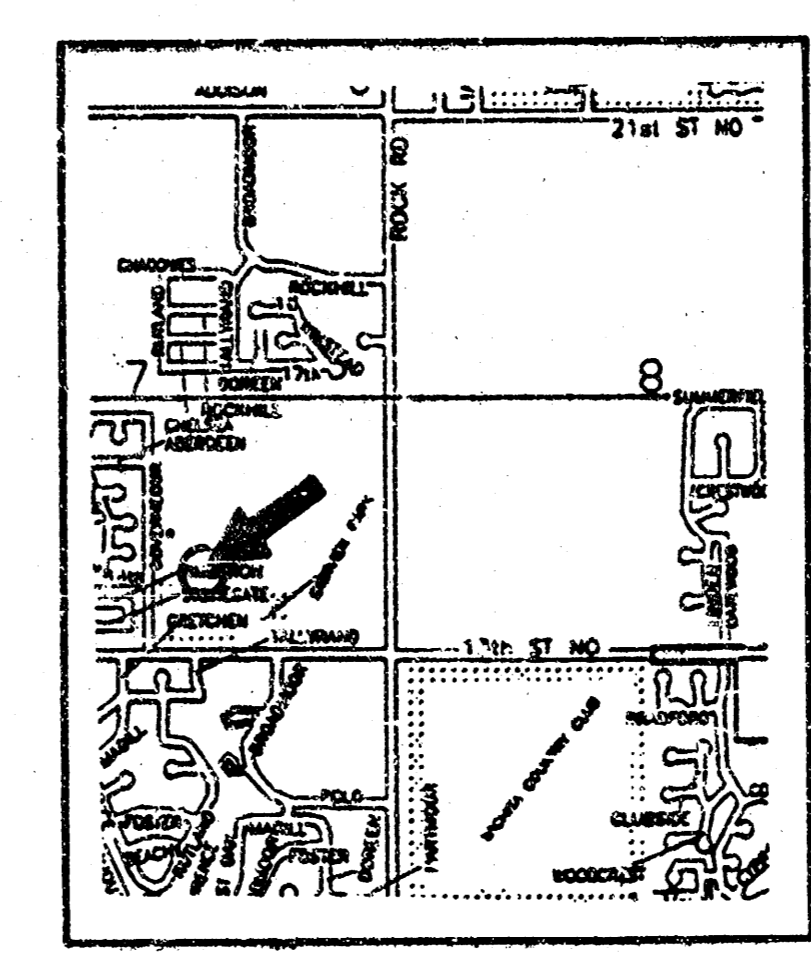
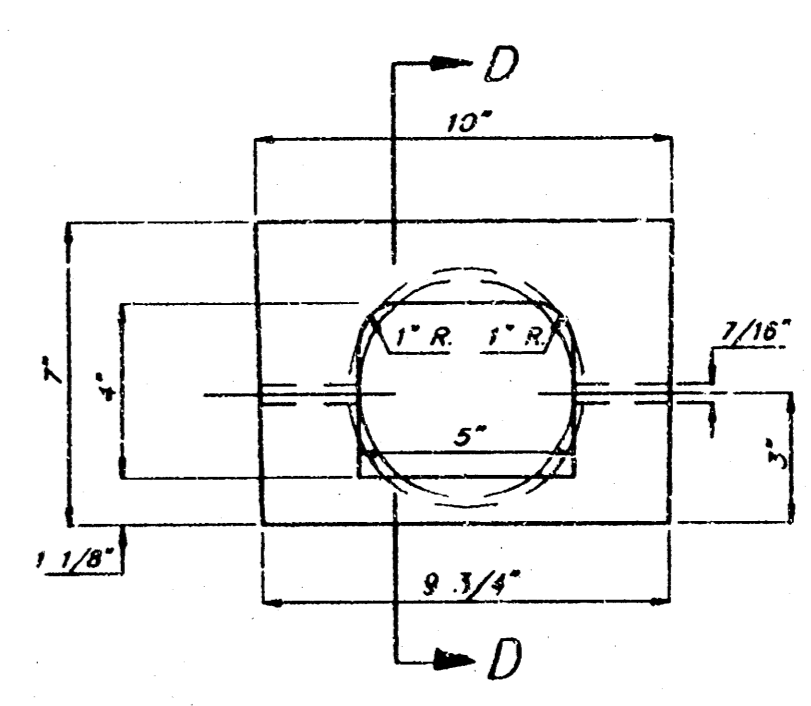
APPROVED AS NOTED
BY CITY ENGINEER OF WICHITA

Sanitary Sewers _____
 Storm Sewers VRH 5/31/95
 Driveway Approaches _____
 Water Mains _____
 Paving _____

NOTE TO CONTRACTORS
 Inspection and testing for this project is to be provided by a Licensed Consulting Engineering Firm under contract with the Owner/Developer. Said inspection to be in accordance with the City of Wichita standard construction engineering practices and certified by a Licensed Professional Engineer. No work shall be performed in dedicated easements or public right-of-way by the Contractor without such inspection nor shall any work be commenced without written authorization by the City Engineer. All Construction and Materials shall comply with the City of Wichita Specifications and Standards (on file and available in the City Engineer's Office).

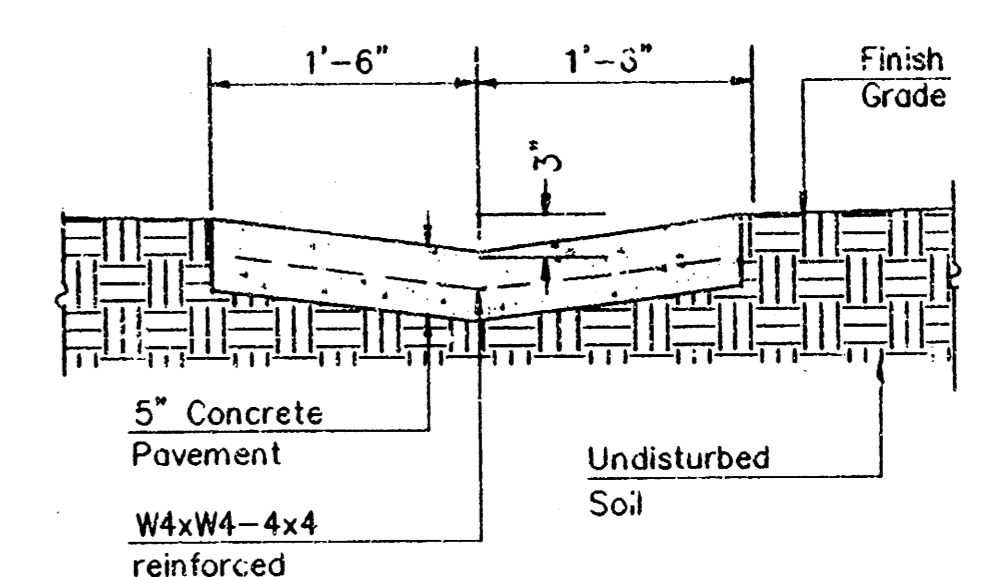
INLET	C	Q _s	Q ₁₀₀
1	0.9	2.05 CFS	3.32 CFS
2	0.9	1.65 CFS	2.65 CFS
3	0.9	8.20 CFS	13.25 CFS

DRAINAGE AREA: 3.0 ACRES



SECTION D-D
 DEETER CURB DRAIN
 #2449 - 6" CURB (M-FLOW)
 EST. WT. = 40 LBS.

LOCATION MAP
 NOT TO SCALE



CONCRETE FLUME
 NOT TO SCALE



SECURITY STORAGE PROPERTIES
STORM WATER IMPROVEMENTS

BAUGHMAN COMPANY P. A.
 ENGINEERING, SURVEYING, & PLANNING
 110 W. 21st St. • 119 W. 11th St. • WICHITA, KANSAS 67201

PROJECT NUMBER
559PPS (807861)

DESIGN	DRAWN	APPROVED	DATE	SCALE
NRW/JUL	JUL	NRW	MAY 1995	1"=30'

SHEET
 OF 1
 1