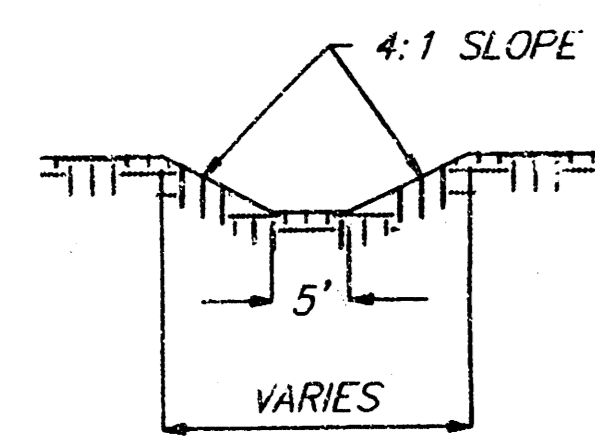


**BENCHMARK:**  
 "M" in Mueller of Fire Hydrant  
 at the NE Cor. of Walden and  
 Bramblewood.  
 Elev. = 197.39 (City Datum)

All areas disturbed by installation of pipe or construction of  
 ditch shall be seeded and fertilized as follows:

**SEED--**  
 Kansas Premium Fescue Blend 6-2#/1000 sq. ft.  
 (equal parts of Olympic II, Bonanza, Apache, and Monarch  
 varieties.)

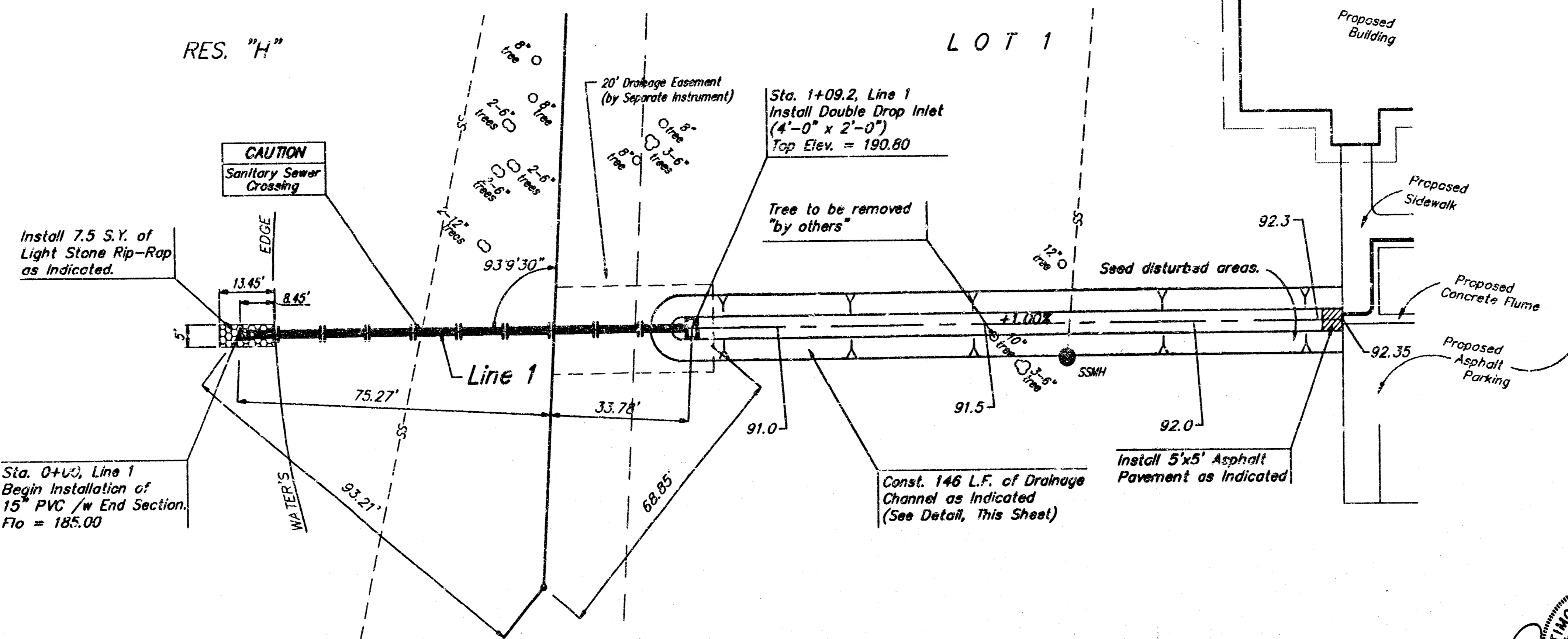
**FERTILIZER--**  
 16-20-6 ratio 4#/1000 sq. ft.



TYPICAL DITCH SECTION  
 NOT TO SCALE

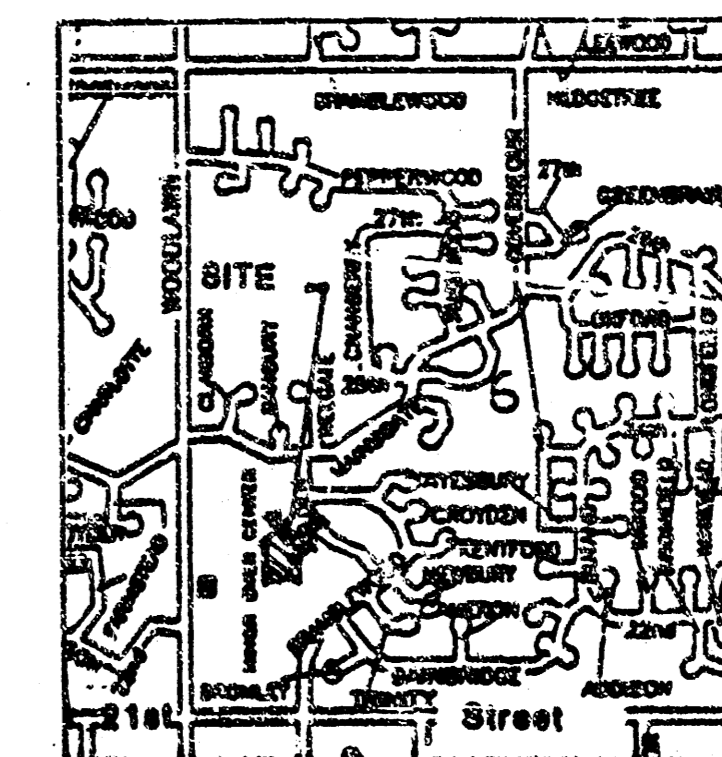
COMOTARA  
 FIRST ADDITION

COMOTARA VILLAGES  
 SECOND ADDITION

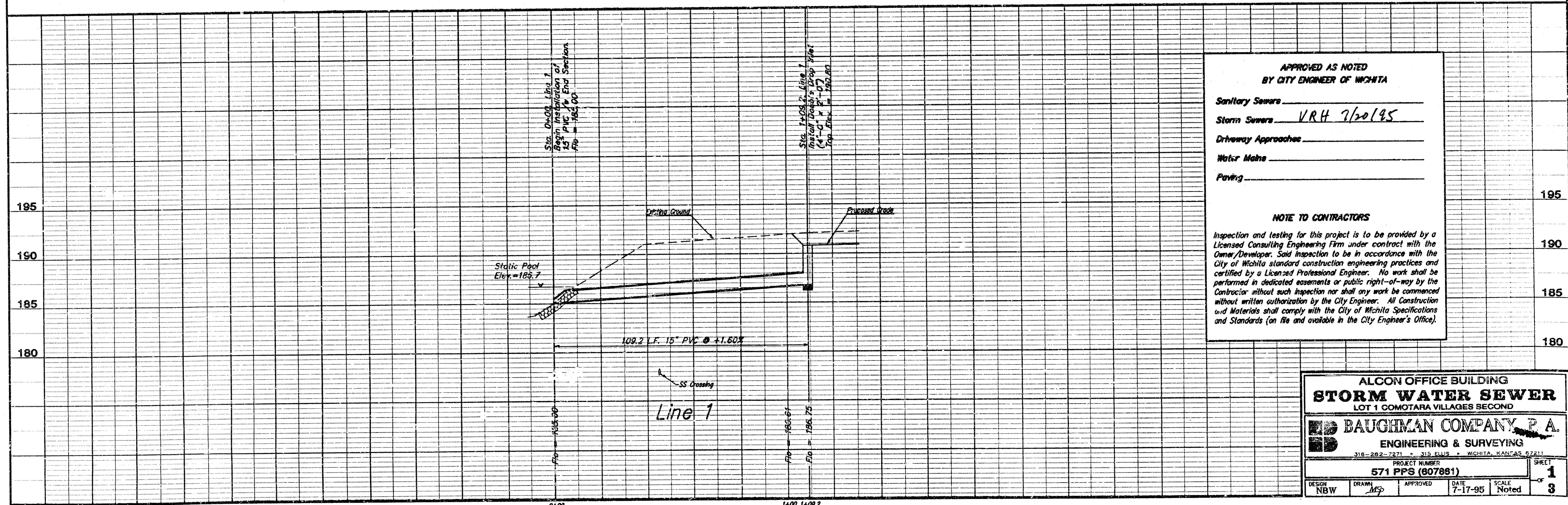
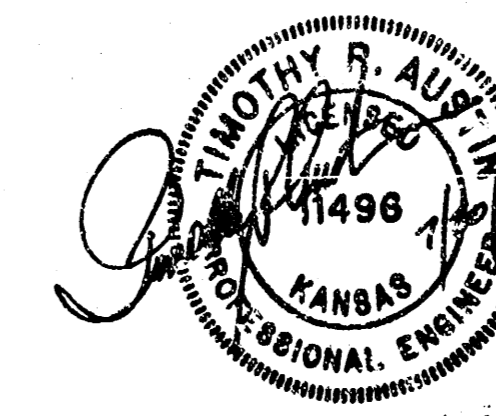


Scale: 1" = 20' Horizontal  
 1" = 5' Vertical  
 • = Iron

City of Wichita, Kansas  
 Michael E. Lindebak, City Engineer



SITE LOCATION



APPROVED AS NOTED  
 BY CITY ENGINEER OF WICHITA

Sanitary Sewers \_\_\_\_\_  
 Storm Sewers VRH 7/20/95  
 Driveway Approaches \_\_\_\_\_  
 Water Mains \_\_\_\_\_  
 Paving \_\_\_\_\_

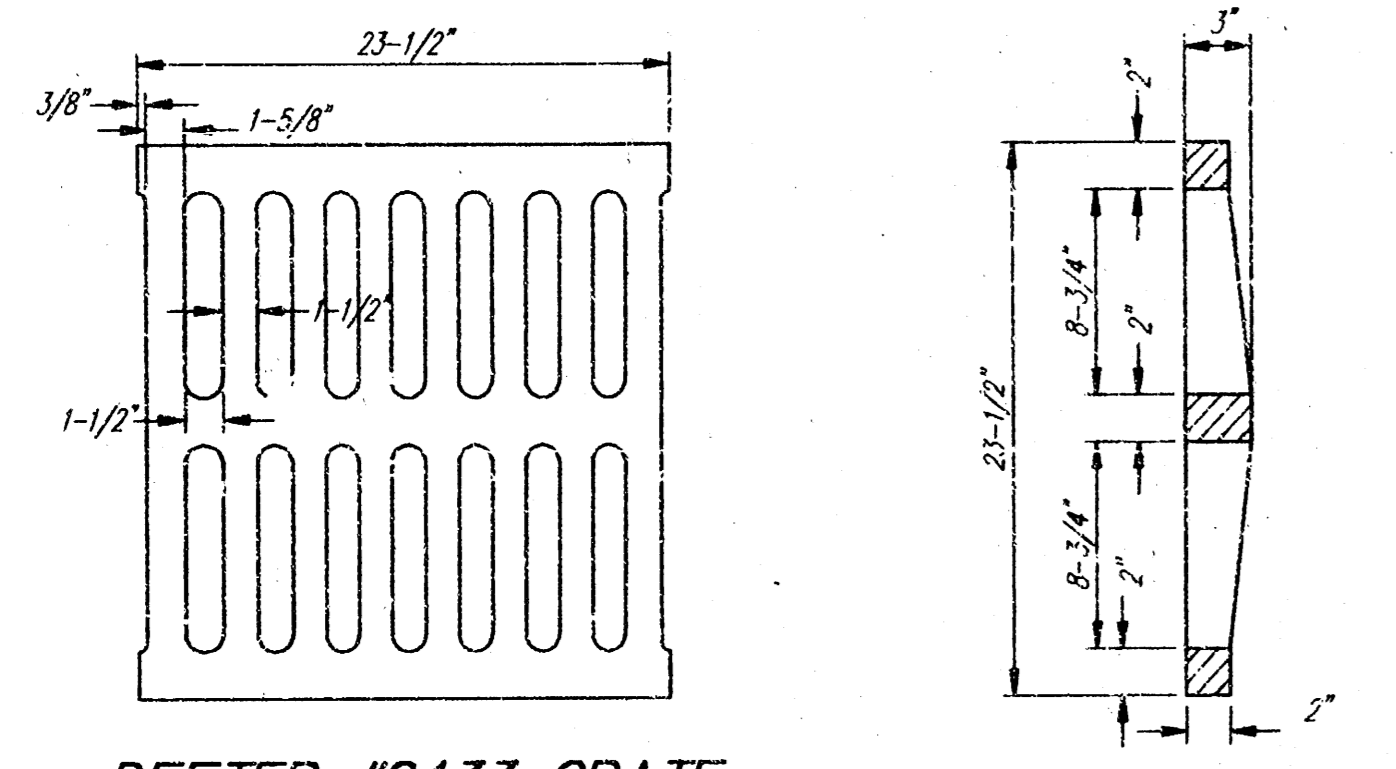
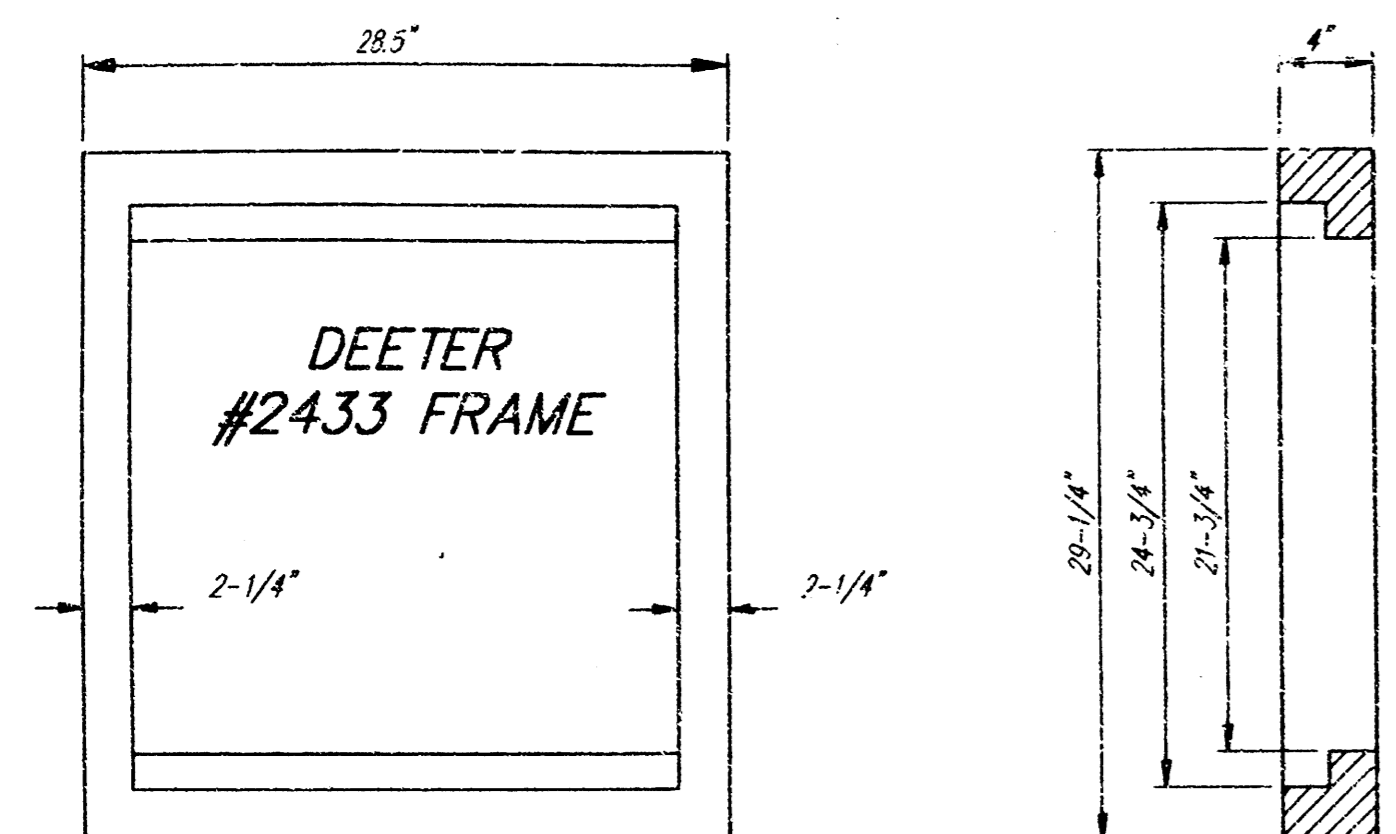
**NOTE TO CONTRACTORS**  
 Inspection and testing for this project is to be provided by a  
 Licensed Consulting Engineering Firm under contract with the  
 Owner/Developer. Said inspection to be in accordance with the  
 City of Wichita standard construction engineering practices and  
 certified by a Licensed Professional Engineer. No work shall be  
 performed in dedicated easements or public right-of-way by the  
 Contractor without such inspection nor shall any work be commenced  
 without written authorization by the City Engineer. All Construction  
 and Materials shall comply with the City of Wichita Specifications  
 and Standards (on file and available in the City Engineer's Office).

ALCON OFFICE BUILDING  
**STORM WATER SEWER**  
 LOT 1 COMOTARA VILLAGES SECOND

**BAUGHMAN COMPANY, P.A.**  
 ENGINEERING & SURVEYING  
 318-282-7271 • 318 ELLIS • WICHITA, KANSAS 67211

PROJECT NUMBER  
**571 PPS (807881)**

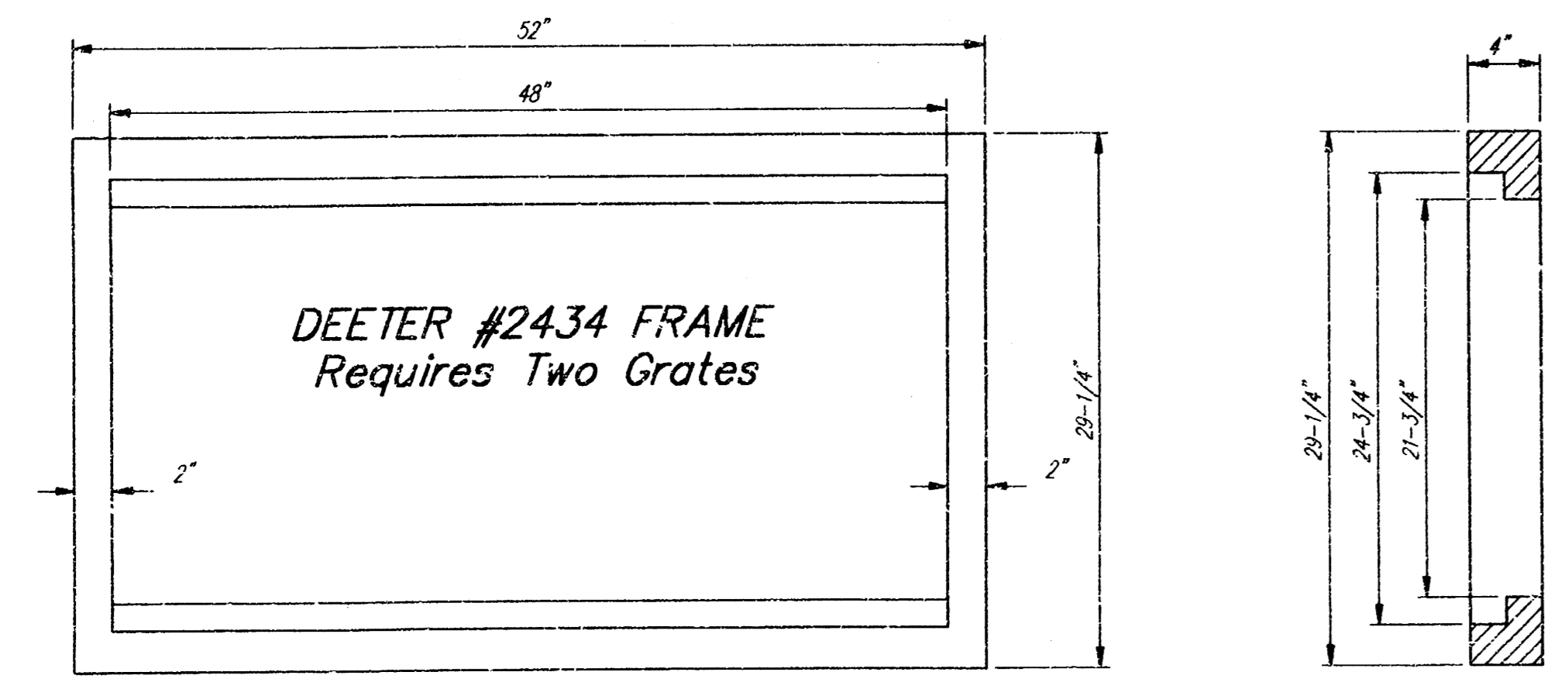
DESIGN NBW DRAWN MS APPROVED DATE 7-17-95 SCALE Noted SHEET 1 OF 3



DEETER #2433 GRATE

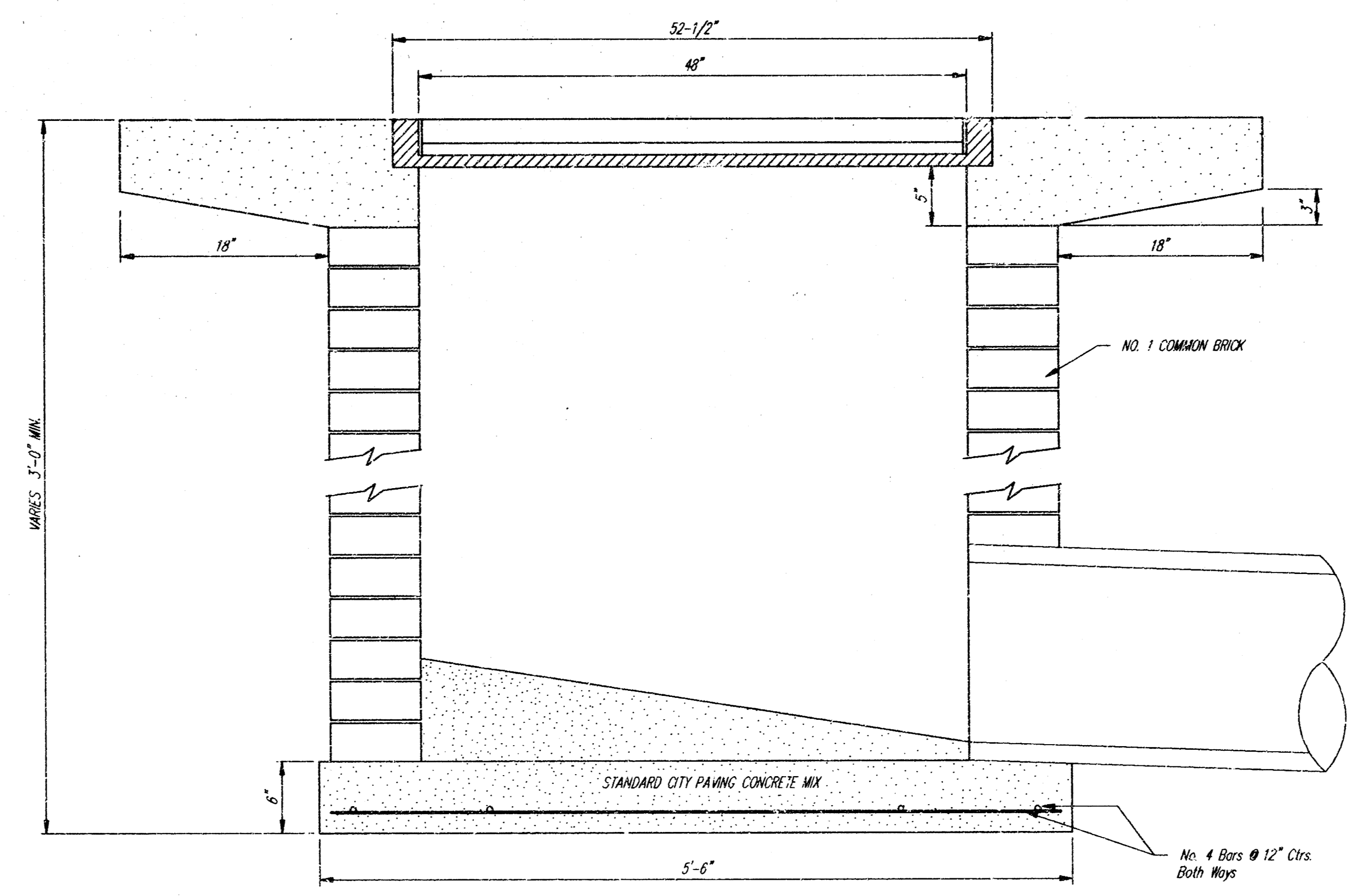
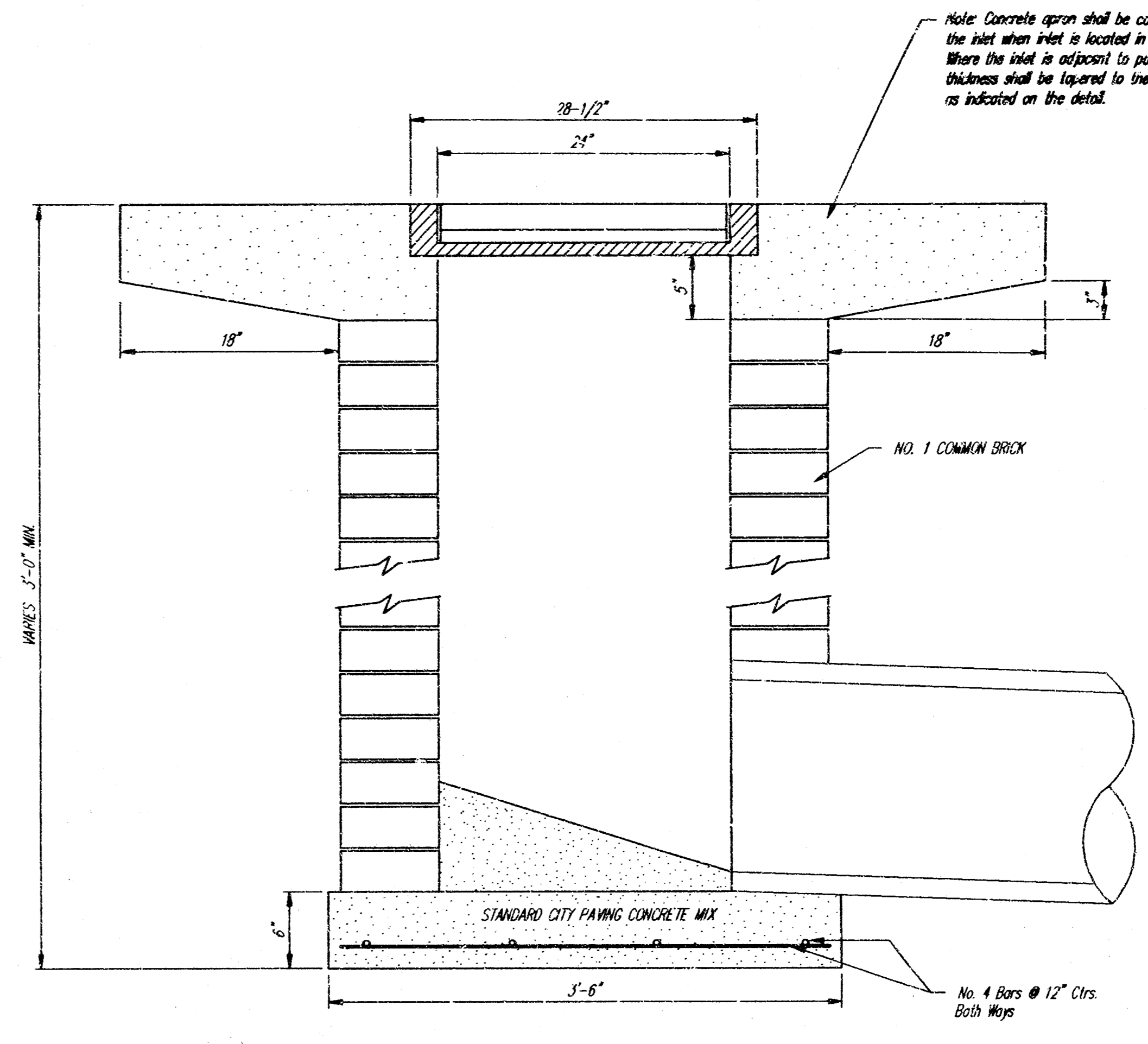
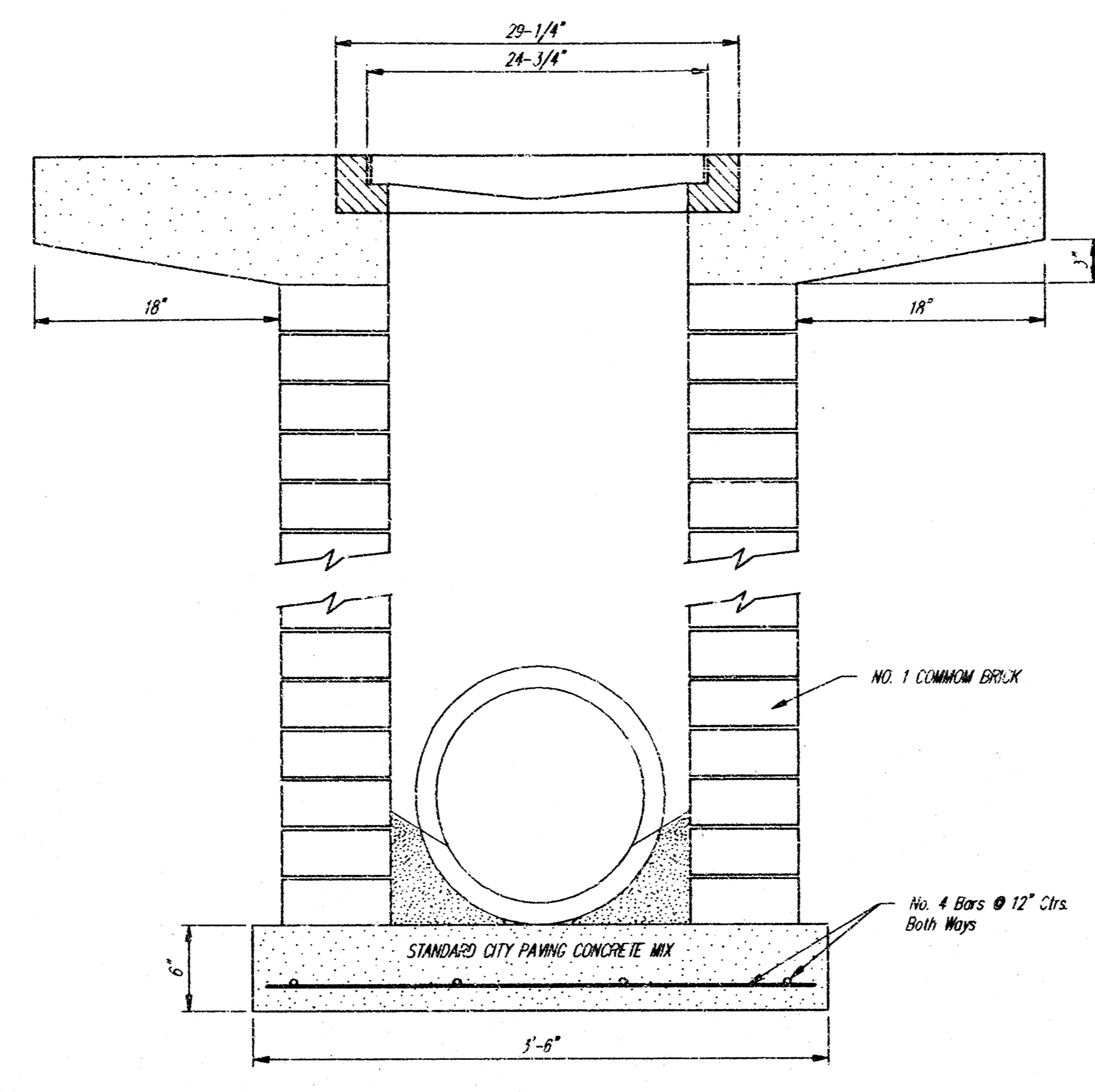
24" x 24" Frame and Grate Detail

NOTE: Grates shall be imprinted on the top surface with "CITY OF WICHITA" using letters at least 1" in height. Other marking methods may be approved by the engineer.



DEETER #2434 FRAME  
Requires Two Grates

Double 24" x 24" Frame Detail



City of Wichita Standard					
<b>Drop Inlet</b>					
BAUGHMAN COMPANY P. A.					
ENGINEERING, SURVEYING, & PLANNING					
316-282-7271 • 315 E. J. ST. • WICHITA, KANSAS 67211					
PROJECT NUMBER					SHEET
571 PPS (807851)					2
DESIGN	DRAWN	APPROVED	DATE	SCALE	OF
COV	STAFF				3

