

PROJECT LOCATION

APPROVED AS NOTED
BY CITY ENGINEER OF WICHITA

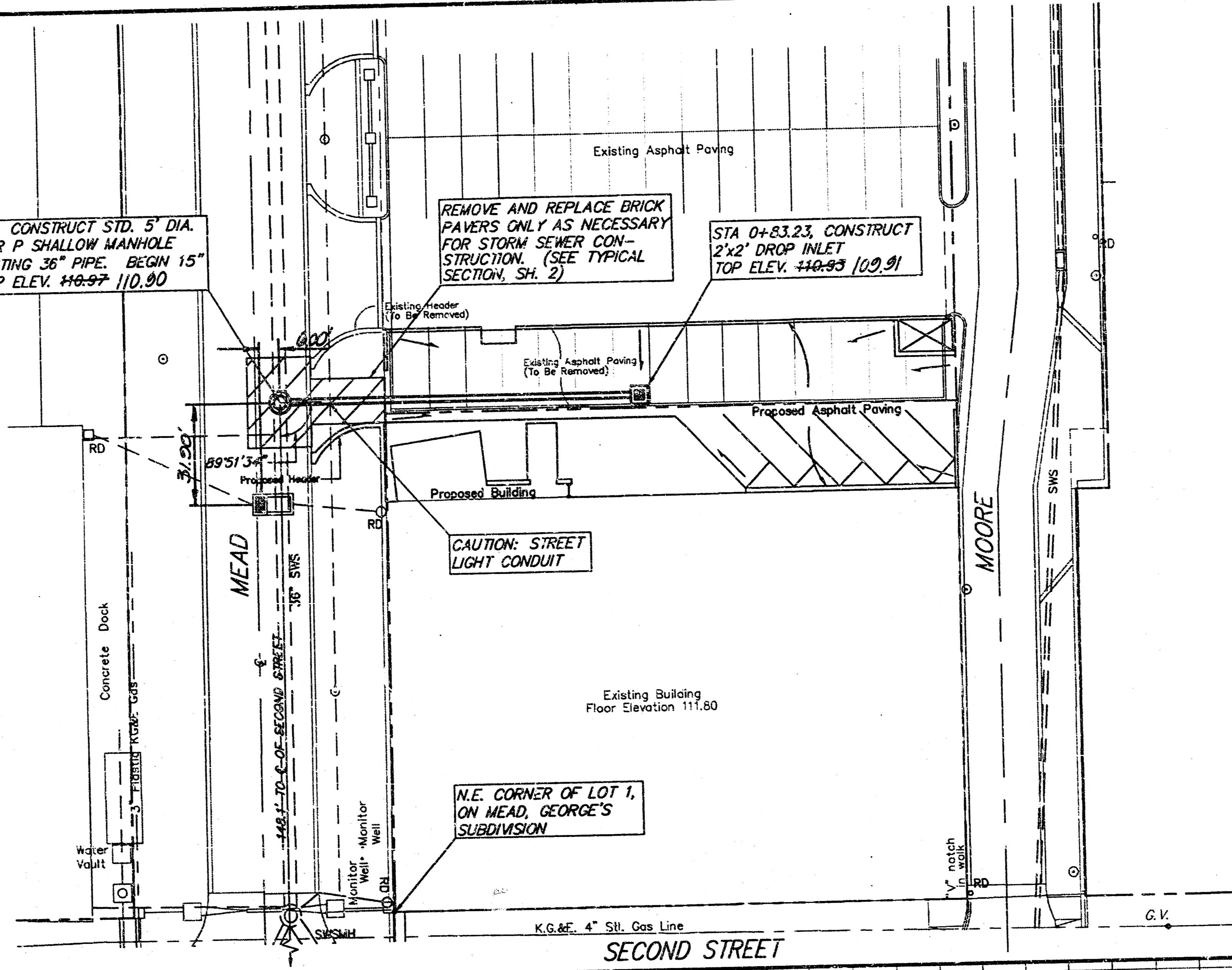
Sanitary Sewers _____
Storm Sewers VRH 2/13/96
Driveway Approaches _____
Water Mains _____
Paving _____

NOTE TO CONTRACTORS
Inspection and testing for this project are to be provided by a Licensed Consulting Engineering Firm under contract with the Owner/Developer. Said inspection to be in accordance with the City of Wichita standard construction engineering practices and carried by a Licensed Professional Engineer. No work shall be performed in dedicated easements or public right-of-way by the Contractor without such inspection, nor shall any work be commenced without written authorization by the City Engineer.

STA 0+00, CONSTRUCT STD. 5" DIA. TYPE B OR P SHALLOW MANHOLE OVER EXISTING 36" PIPE. BEGIN 15" PIPE. TOP ELEV. ~~110.97~~ 110.90

REMOVE AND REPLACE BRICK PAVERS ONLY AS NECESSARY FOR STORM SEWER CONSTRUCTION. (SEE TYPICAL SECTION, SH. 2)

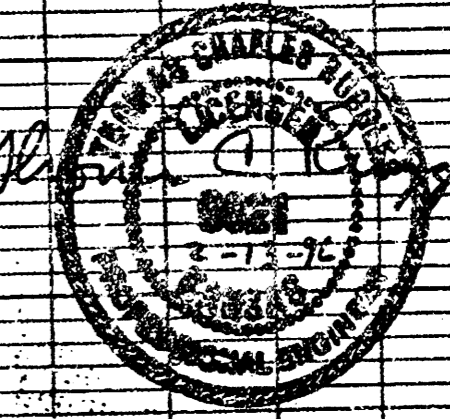
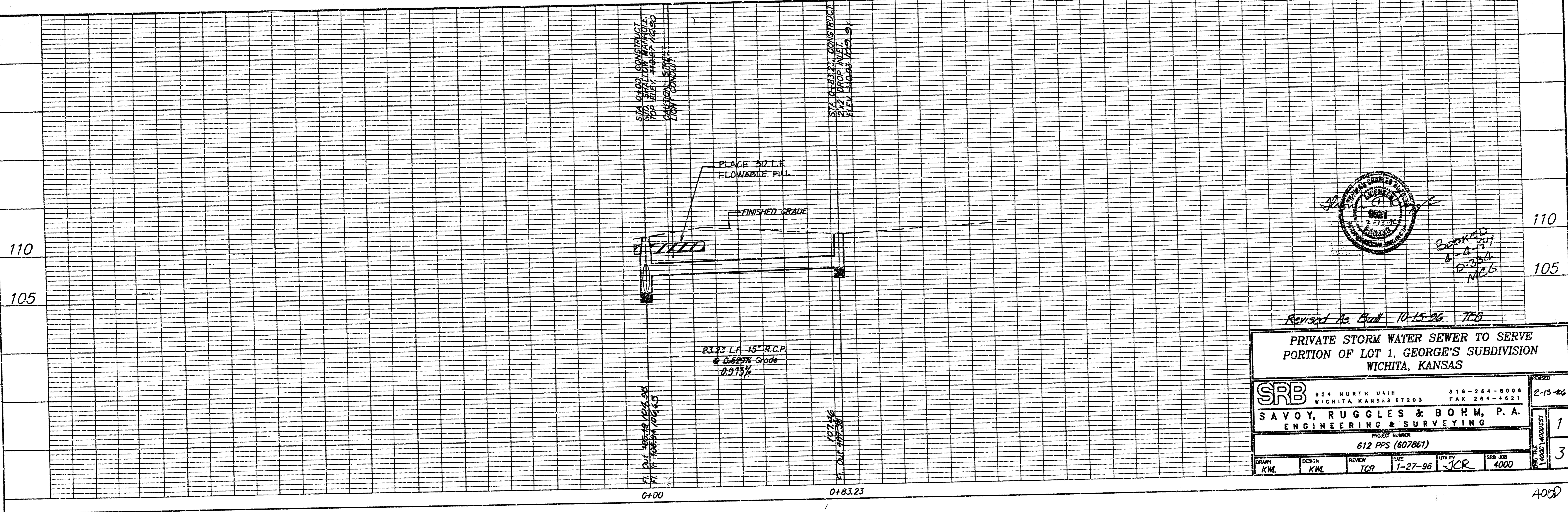
STA 0+83.23, CONSTRUCT 2'x2' DROP INLET TOP ELEV. ~~110.93~~ 109.91



SRB

SCALE:
1" = 20' PLAN
1" = 5' PROFILE (VERT.)

- GENERAL NOTES**
- The Contractor shall give all property owners and/or tenants of developed property directly abutting the construction of this project a minimum of ten (10) days notice prior to start of construction.
 - The Contractor shall be responsible for preserving property irons. The Contractor will be required to re-establish any property irons which are damaged or destroyed by his construction operations. Such irons shall be re-established by a licensed land surveyor in accordance with state laws.
 - Contractor will be required to provide a minimum notice of twenty-four (24) hours to utility companies prior to starting any excavation as follows:
Kansas One-Call 687-2470
 - The Contractor shall be responsible for traffic control to maintain traffic at all times on Mead.
 - All work on this project shall be done in accordance with City of Wichita Standard Specifications for storm sewers and drainage.
 - Trench backfill shall be compacted to Standard Proctor Density of 95% min.
 - Contractor shall use caution not to disturb ground-water monitoring wells.
- BENCH MARK**
- R.R. Spike in south face of power pole at N.W. corner of Mead and Second Street. Elev. = 113.31 City Datum
- INDEX**
- Plan/Profile
 - Drop Inlet & Pavement Detail
 - Shallow Manhole Detail



Booked
1-11-96
D-354
N26

Revised As Built 10-15-96 TEB

PRIVATE STORM WATER SEWER TO SERVE PORTION OF LOT 1, GEORGE'S SUBDIVISION WICHITA, KANSAS

SRB 924 NORTH MAIN WICHITA, KANSAS 67203 316-264-0008 FAX 264-4621

SAVOY, RUGGLES & BOHM, P. A. ENGINEERING & SURVEYING

PROJECT NUMBER 612 PPS (607861)

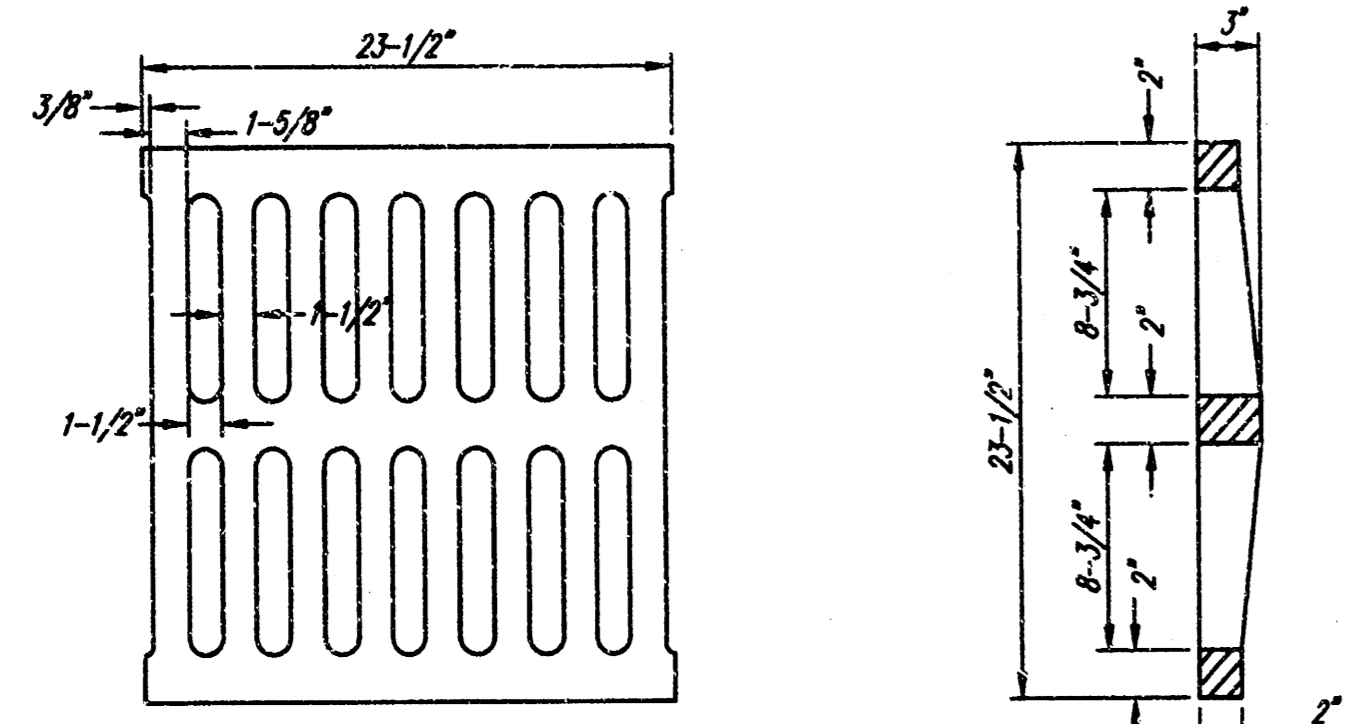
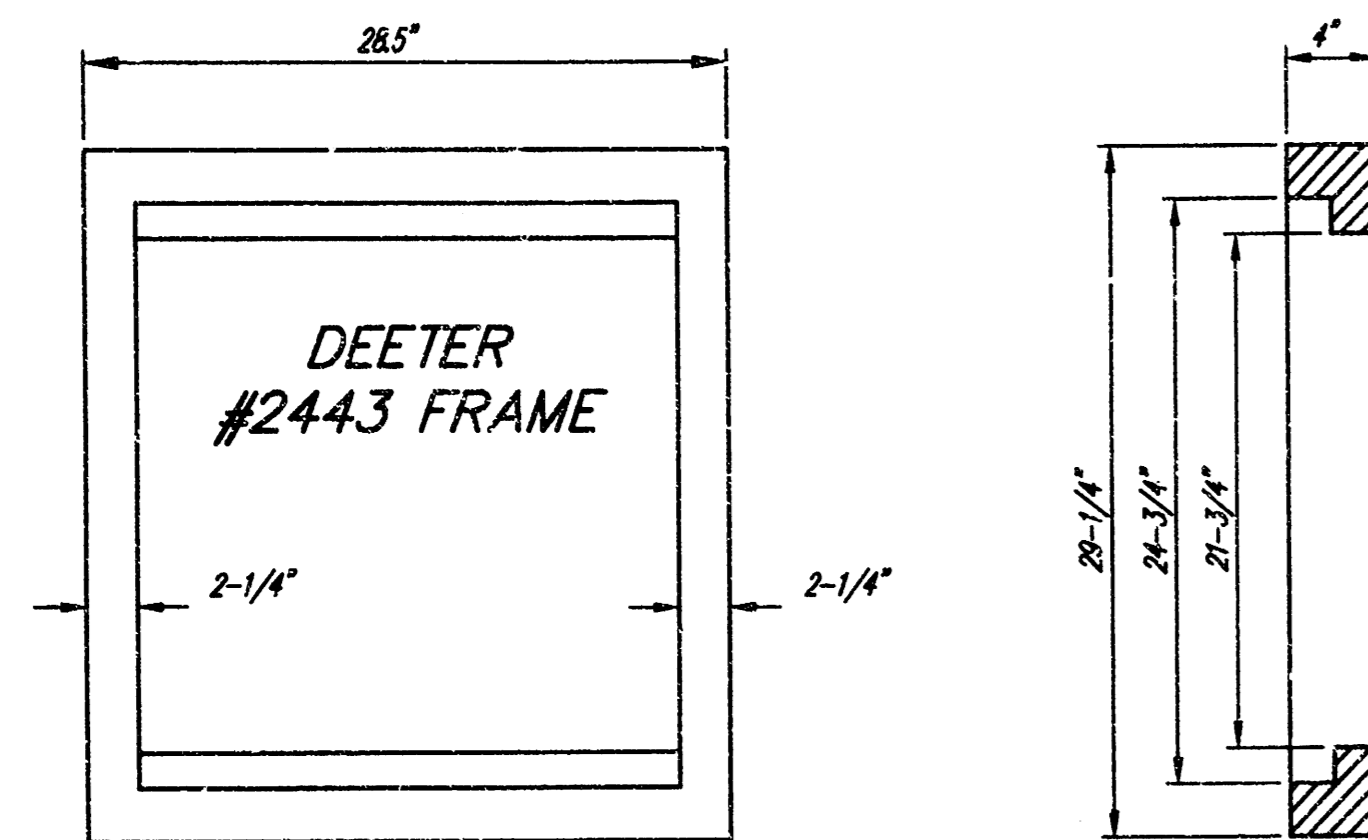
DATE	BY	APP'D BY
DESIGN	KWL	
REVIEW	TCR	
DATE	1-27-96	
APP'D BY	JCR	
SRB JOB	4000	

2-15-96

1

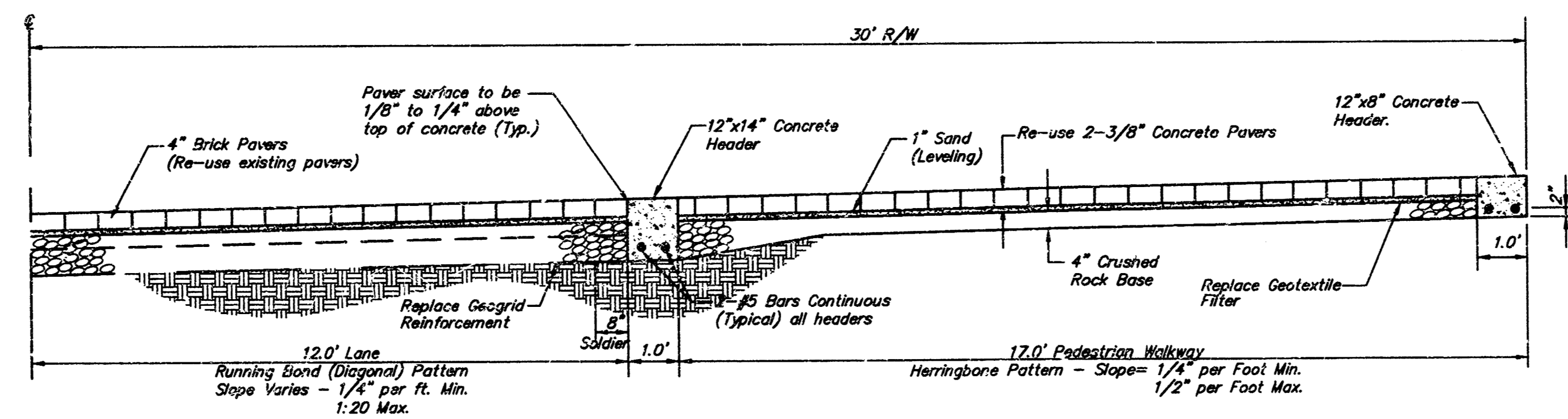
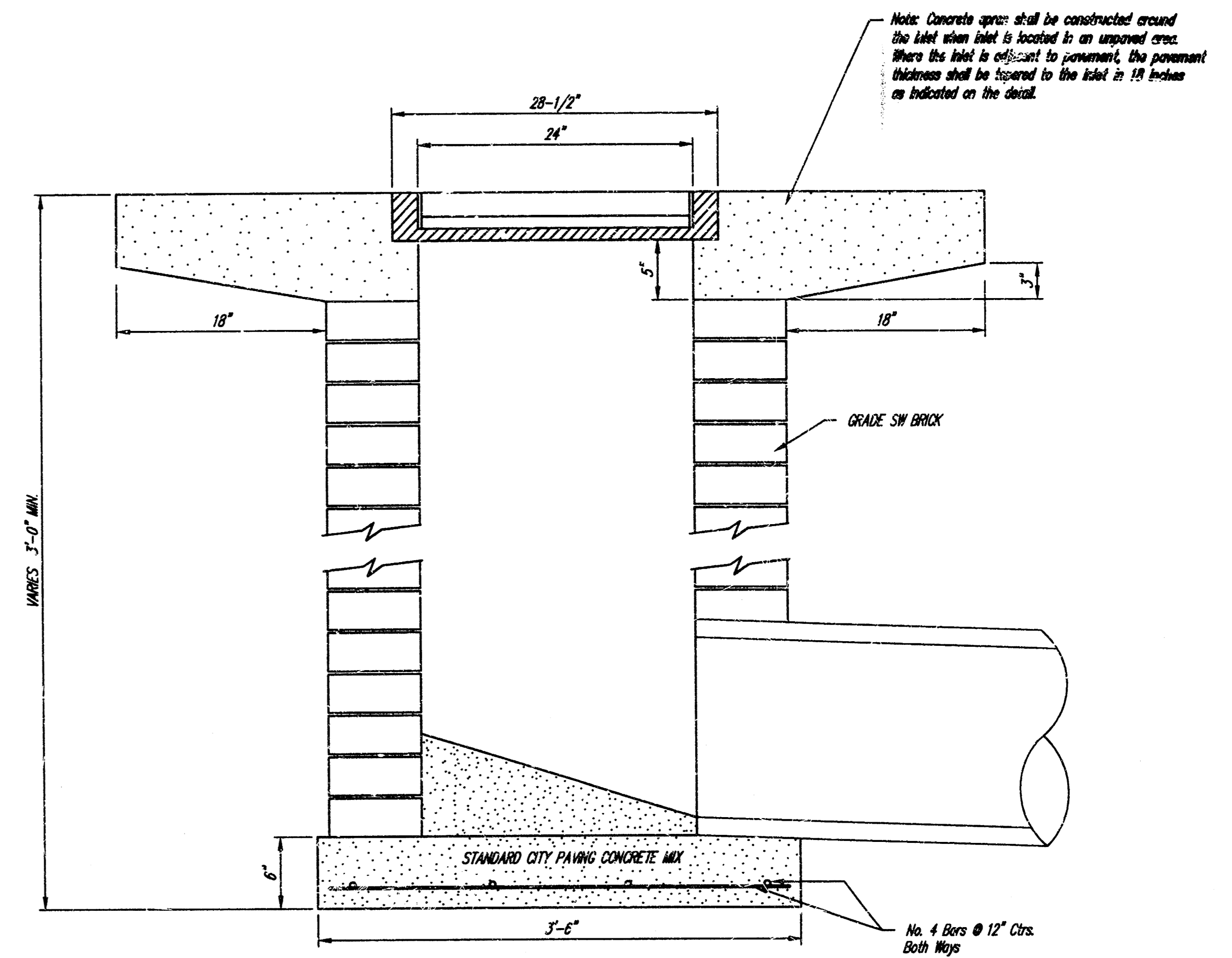
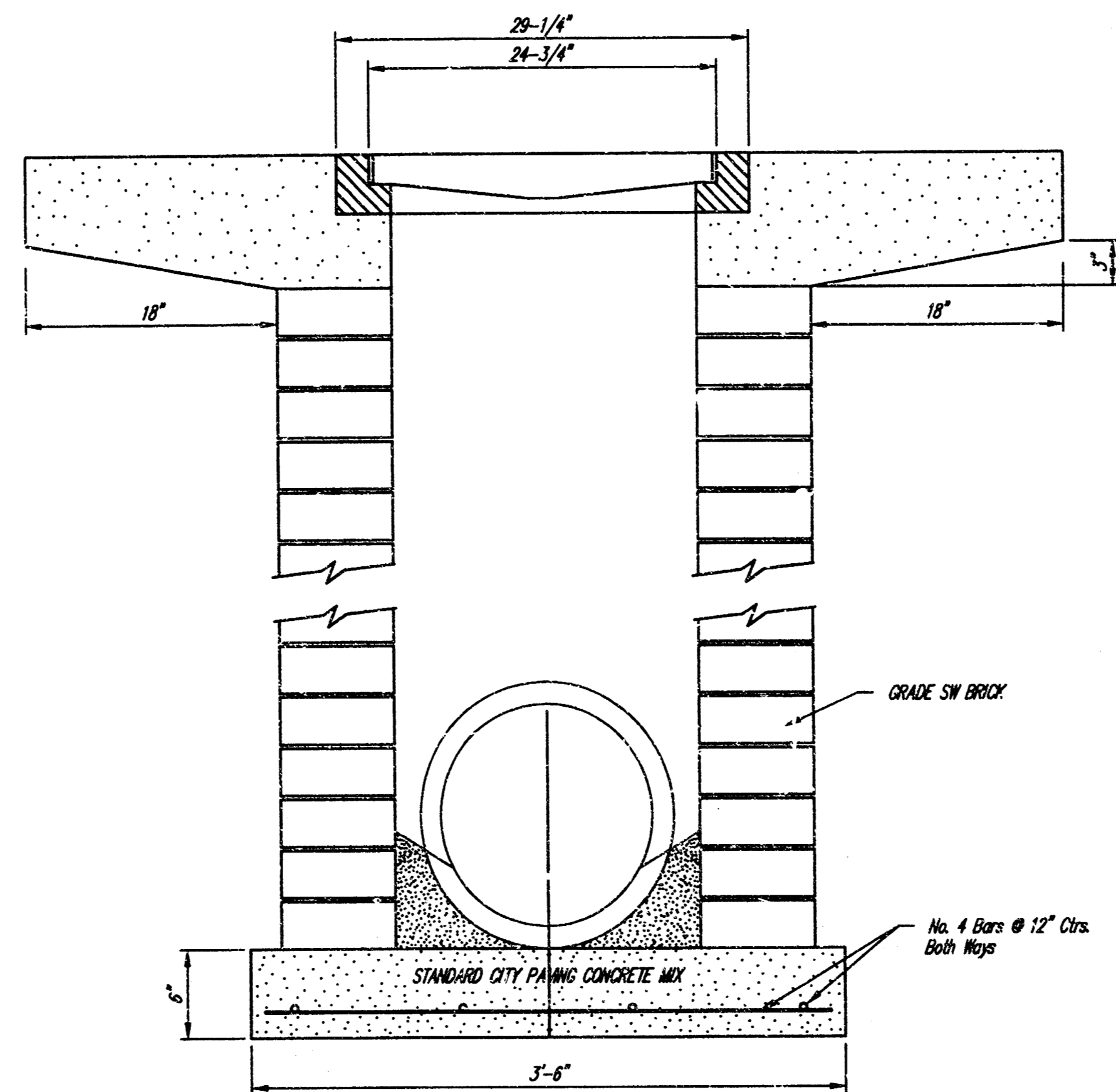
3

4000



DEETER #2433 GRATE

24" x 24" Frame and Grate Detail



TYPICAL PAVEMENT SECTION MEAD

DROP INLET AND PAVEMENT DETAILS

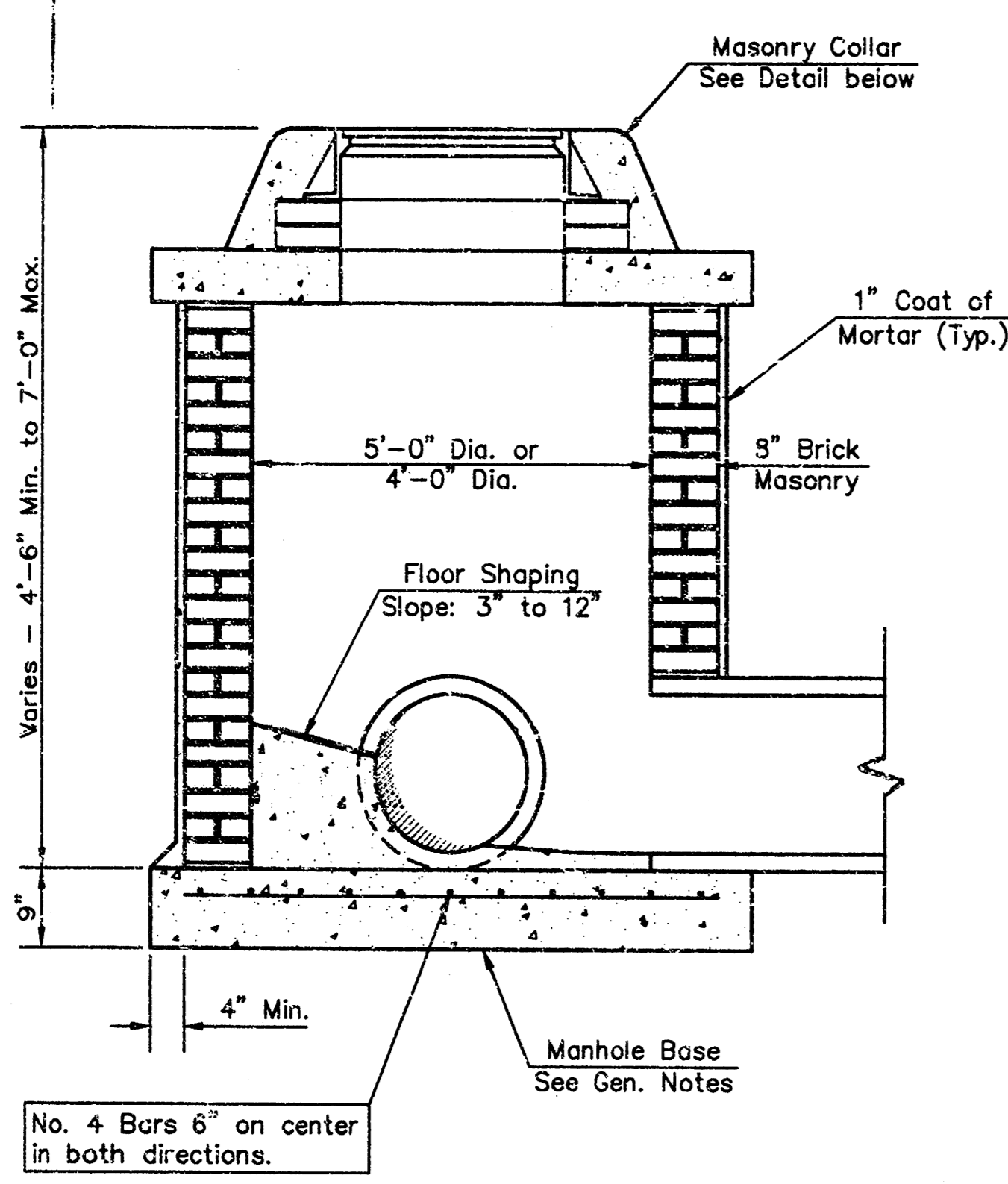
M.E. Lindebak, City Engineer
City of Wichita, Kansas

Project Number

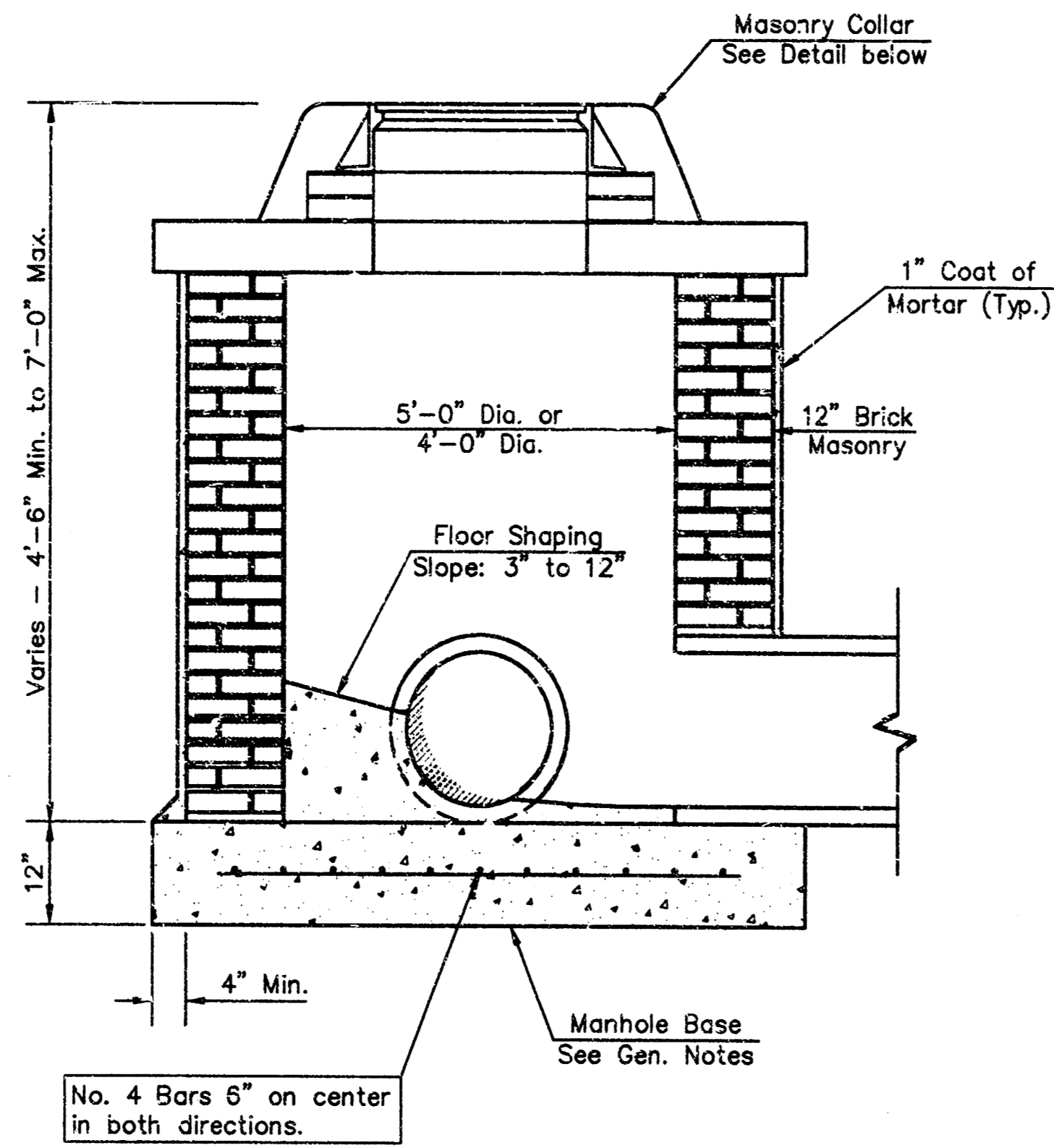
612 PPS (807861)

2

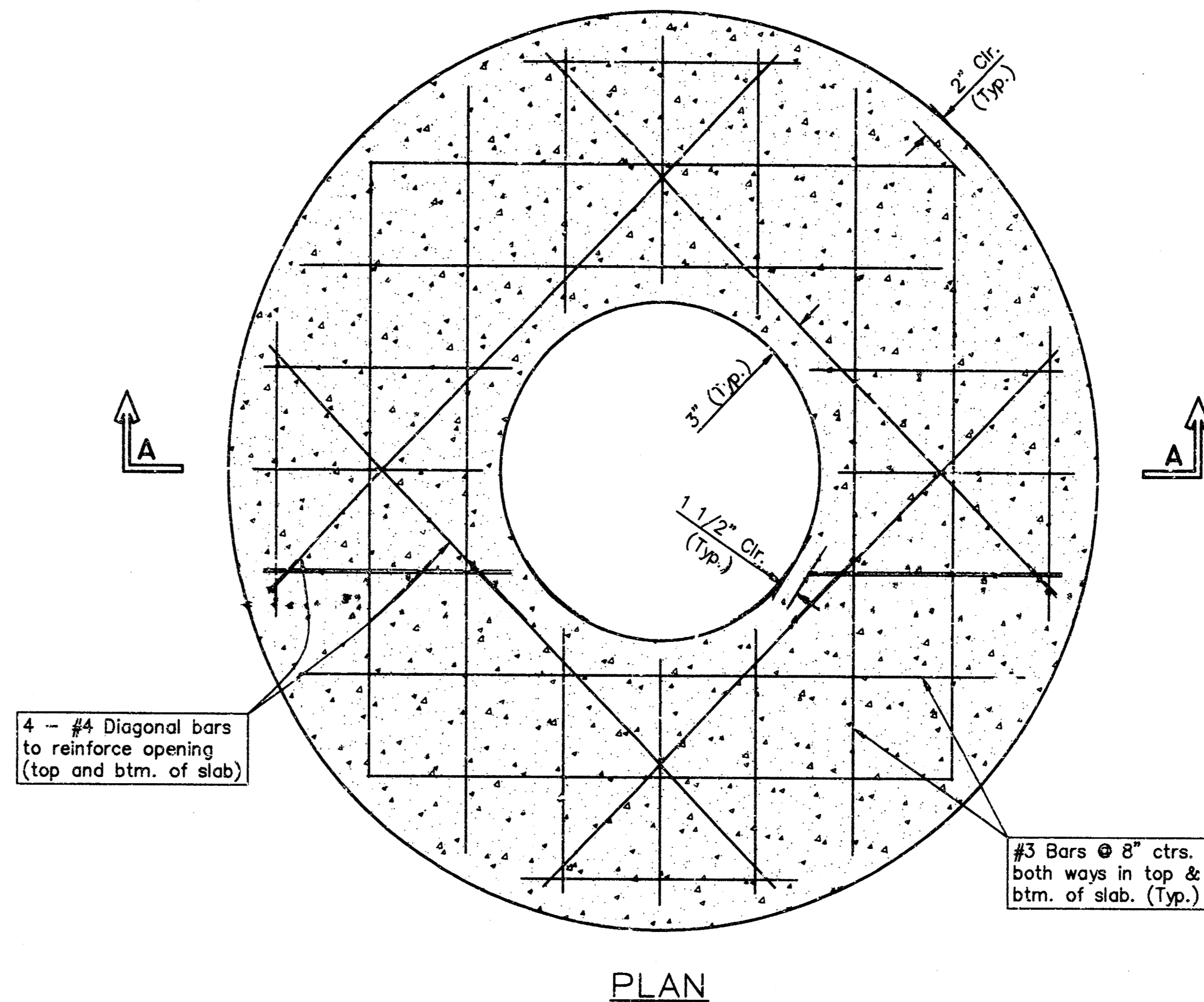
3



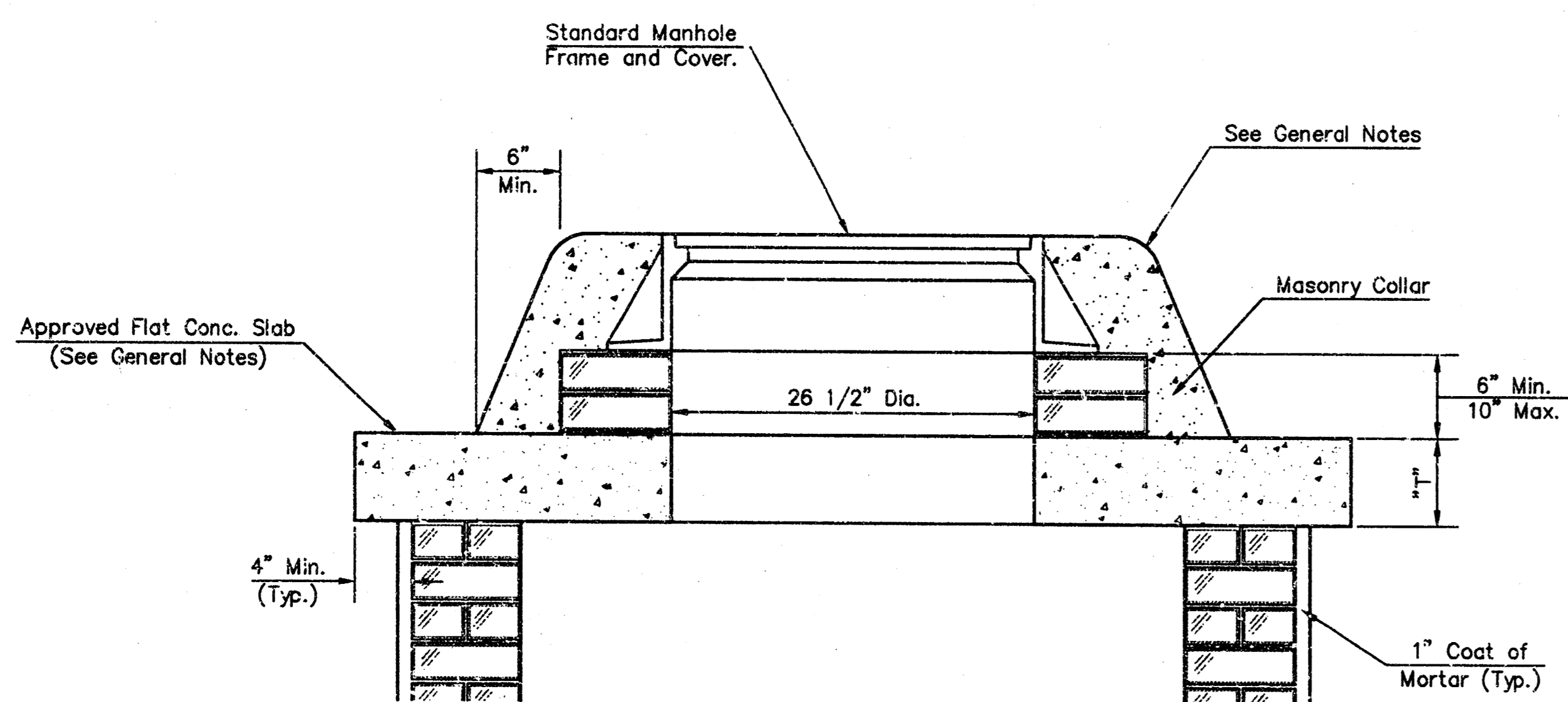
SHALLOW TYPE "A" MANHOLE



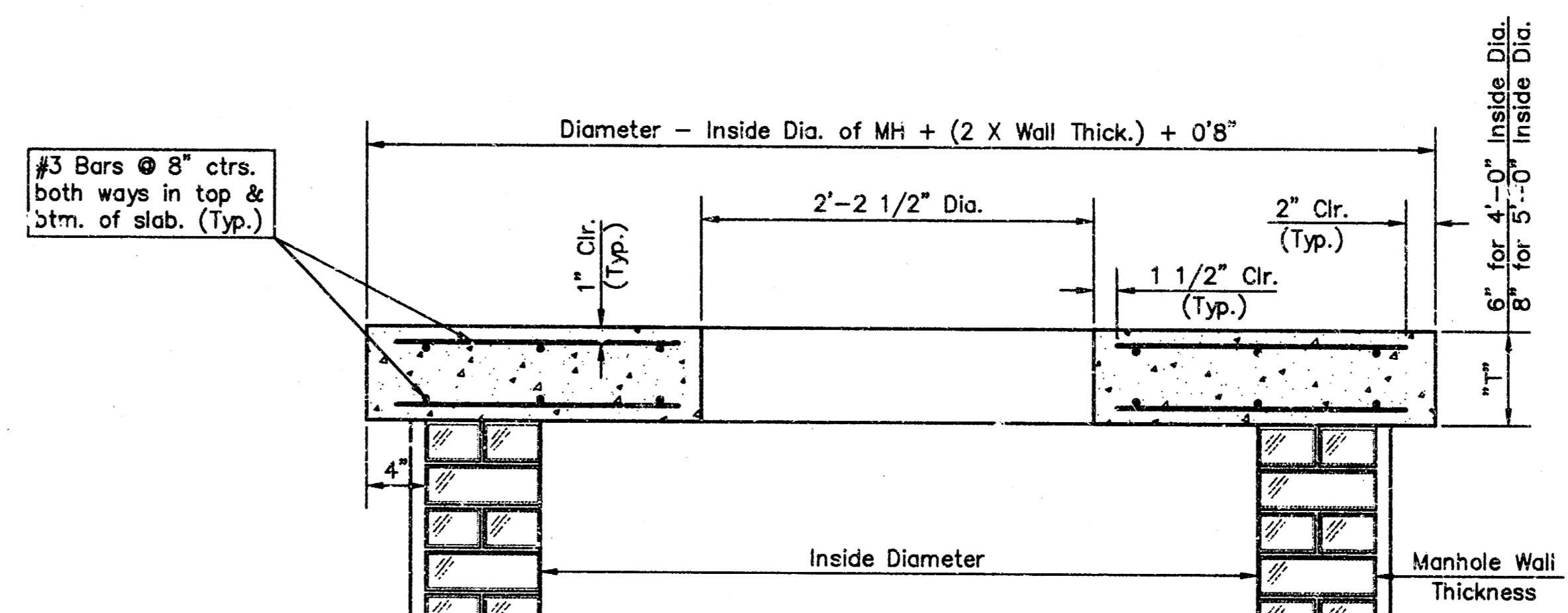
SHALLOW TYPE "B" MANHOLE



PLAN

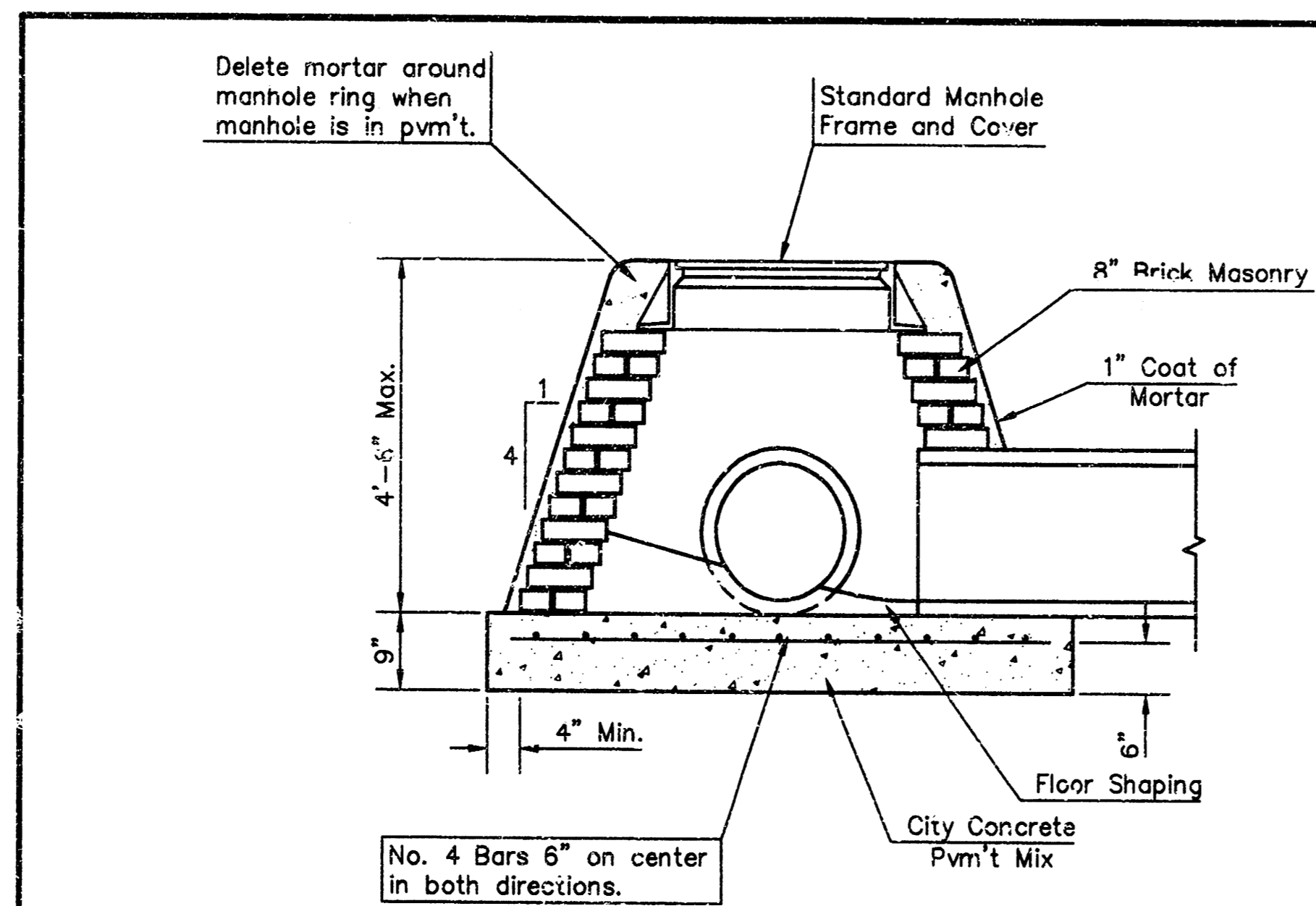


MASONRY COLLAR DETAIL

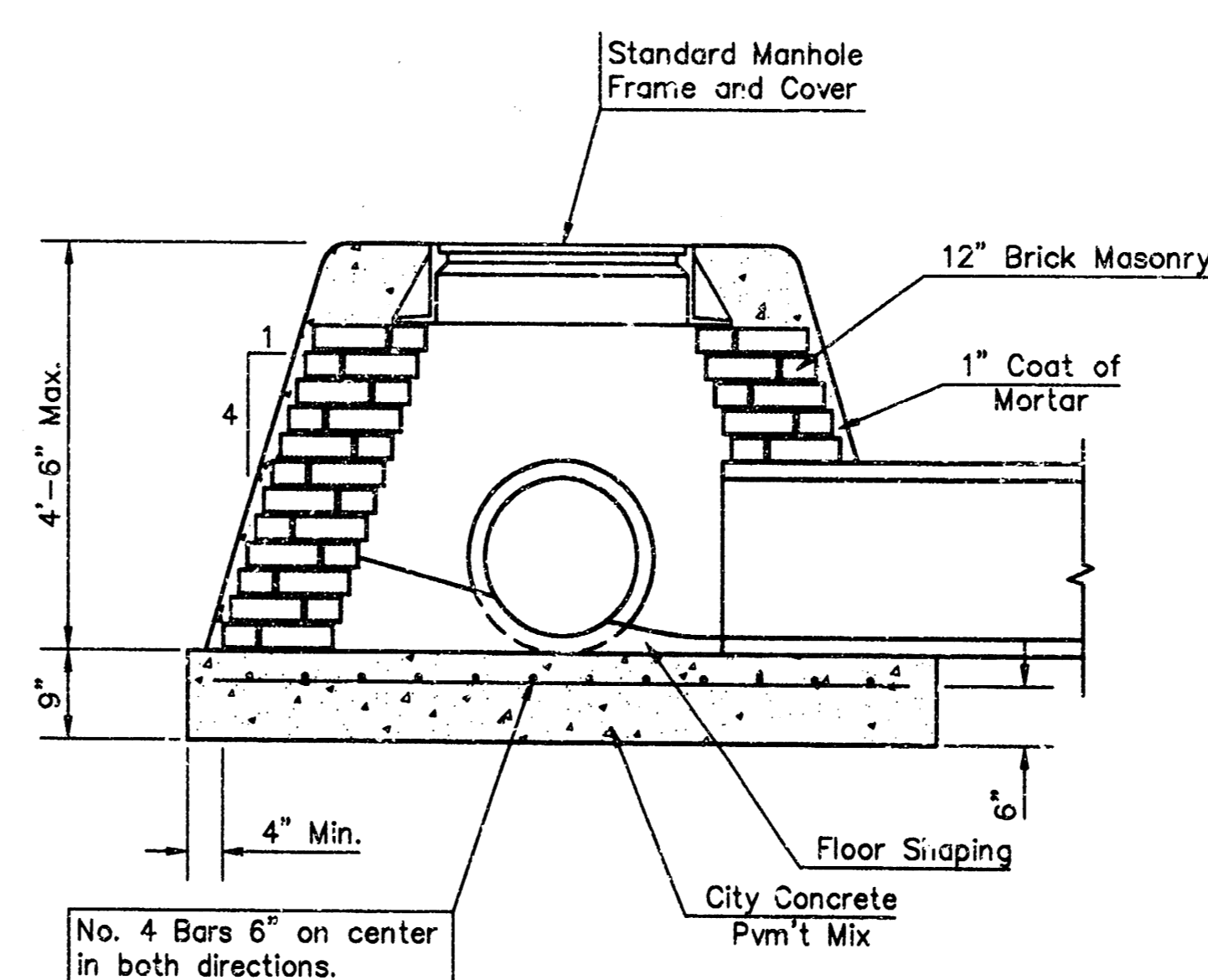


SECTION A-A

FLAT CONCRETE SLAB DETAILS



SPECIAL SHALLOW TYPE "A" MANHOLE



SPECIAL SHALLOW TYPE "B" MANHOLE

GENERAL NOTES

- Mortar used in masonry construction shall contain 8 sacks of cement per cubic yard. Concrete used in manhole bases shall conform to the requirements of concrete for concrete pavement construction as specified in the city standard paving specifications using city concrete cement mix without air entraining admixture. Mortar shall be placed around the manhole ring as shown on the drawings when manholes are constructed in unpaved areas. Type "A" shallow manholes can be used on sewers when the manhole is not located within public street pavement. Manholes constructed where pipe sizes are smaller than 24" shall have an inside diameter of 4". Manholes constructed where pipe sizes are 24" or larger shall have an inside diameter of 5". Completed manhole shall be without leaks and water tight.
- Reinforcing steel shall be installed in the manhole bases and shall consist of no. 4 bars placed on 6" centers in both directions. The manhole base reinforcement shall be placed 6" above the bottom of the manhole base. All costs for furnishing and installing reinforcing steel shall be included in the unit price bid for the manhole.
- The floors of all manholes shall be shaped with flow channels such that the manholes will be self cleaning and free of areas where solids could be deposited as sewage flows through the manhole from all inlet pipes to the outlet pipe. Flow channels shall be formed to match the bottom halves of the inflowing pipes and the outflowing pipe as shown by the drawings. Manhole floors shall have slopes of 3 inches per foot in the areas outside of the flow channels sloped toward the flow channels. Pipes laid through manholes shall have the top half removed to neat lines for the full inside diameter of the manhole. Manhole floors shall then be shaped around the bottom half of the pipe which forms the flow channel.
- Pipes installed within the excavation made for the manhole shall be cradled with concrete to the limits of the manhole excavation. When clay pipe is used, the cradle shall extend to the first joint outside the manhole. The cradle shall be terminated at the clay pipe joint in a manner which will maintain the flexibility of the joint. Cost of cradle within manhole excavation or to clay pipe joints adjacent to manhole shall be included in the unit price bid for the manhole.
- Manhole cover castings and manhole frame castings shall conform to the requirements as indicated in the standard specifications and as shown in the standard detail drawings.
- The crowns of inflowing pipes shall never be set lower than the crown of the outflowing pipe.
- Standard shallow manholes type "A" and "B" shall be paid for at the unit price bid per each for the type and diameter indicated. Standard special shallow manholes type "A" and "B" shall be paid for at the unit price bid per each for the type indicated. All standard shallow manhole diameters will be 4' unless indicated otherwise.
- All brick used in manhole construction shall meet Grade SW of ASTM C652 or C62-37.

F. V. FINAL PROJECTS/PROJECTS 400-500 4000 4000553

CITY OF WICHITA STANDARD SHALLOW TYPE "A" AND "B" MANHOLE DETAILS WICHITA, KANSAS					
SRB	924 NORTH MAIN WICHITA, KANSAS 67203	316-264-8008 FAX 264-4621	PROJECT NUMBER		
	SAVOY, RUGGLES & BOHM, P. A. ENGINEERING & SURVEYING				
DESIGN C.O.W.	DRAWN J. Long	UTILITY	REVIEW	DATE	REVISED
					SHEET 3 OF 3