

BENCH MARKS

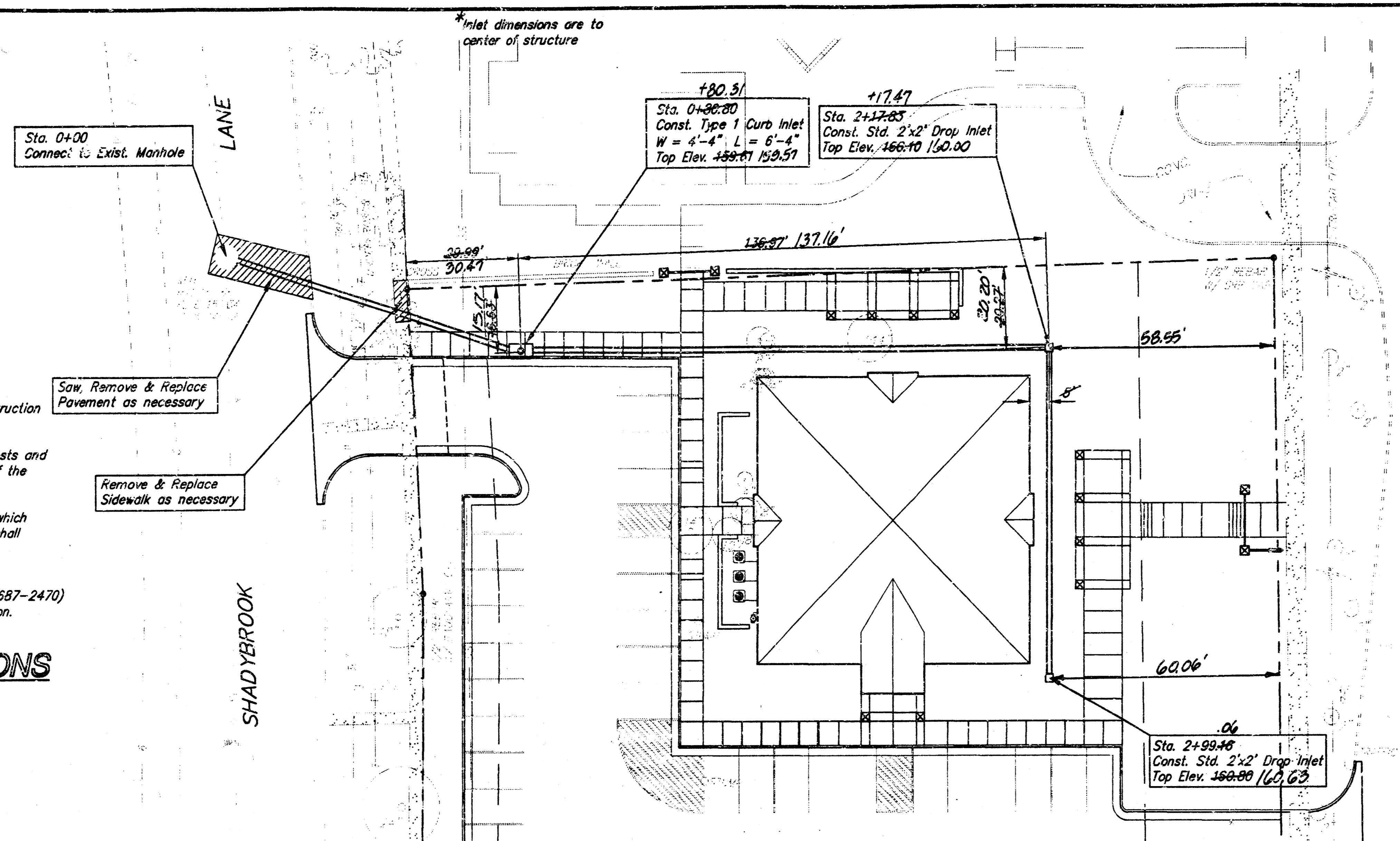
1. "X" CUT @ SW CORNER OF PROPERTY
ELEV. = 158.88 (CITY DATUM)
2. "X" CUT ON TOP OF CURB & NORTH
END OF RETURN AT NW CORNER OF
SHADYBROOK & CARMEN
ELEV. = 152.00 (CITY DATUM)
3. "X" CUT AT BACK OF WALKS; NW
CORNER OF HILLSIDE & SHADYBROOK
ELEV. = 168.32 (CITY DATUM)

GENERAL NOTES

1. All work on this project shall conform to the Standard Specifications for Storm Sewer Construction of the City of Wichita.
2. The Contractor shall be responsible for any costs and arrangements necessary for any adjustment of the Southwestern Bell cable.
3. All unpaved areas within public right-of-way which may be disturbed by Contractor's operations shall be restored in accordance with City of Wichita Administrative Regulation AR-78.
4. The Contractor shall notify Kansas One-Call (687-2470) a minimum of 24 hours prior to any excavation.

RUNOFF CALCULATIONS

By Rational Formula: $Q = CIA$
 Impervious Area = 38371 S.F.
 Pervious Area = 15353 S.F.
 D.A. (to Storm Sewer) = 1.23 A.
 C_p impervious = 0.85 C_{pa} = 0.93
 C_p pervious = 0.35 C_{pa} = 0.65
 C_p unknown = 0.71 C_{pa} = 0.85
 Assume time of concentration = 5 min.
 $I_5 = 6.53$ in./hr. $I_{100} = 10.32$ in./hr.
 $Q_5 = 5.7$ cfs $Q_{100} = 10.6$ cfs

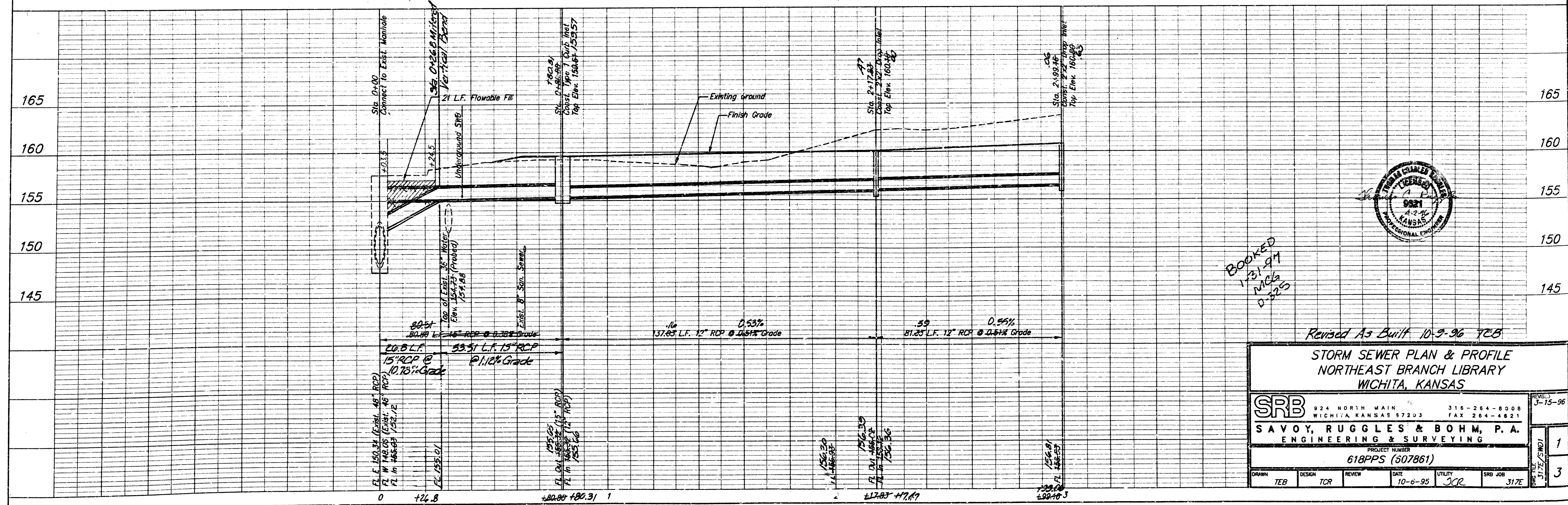
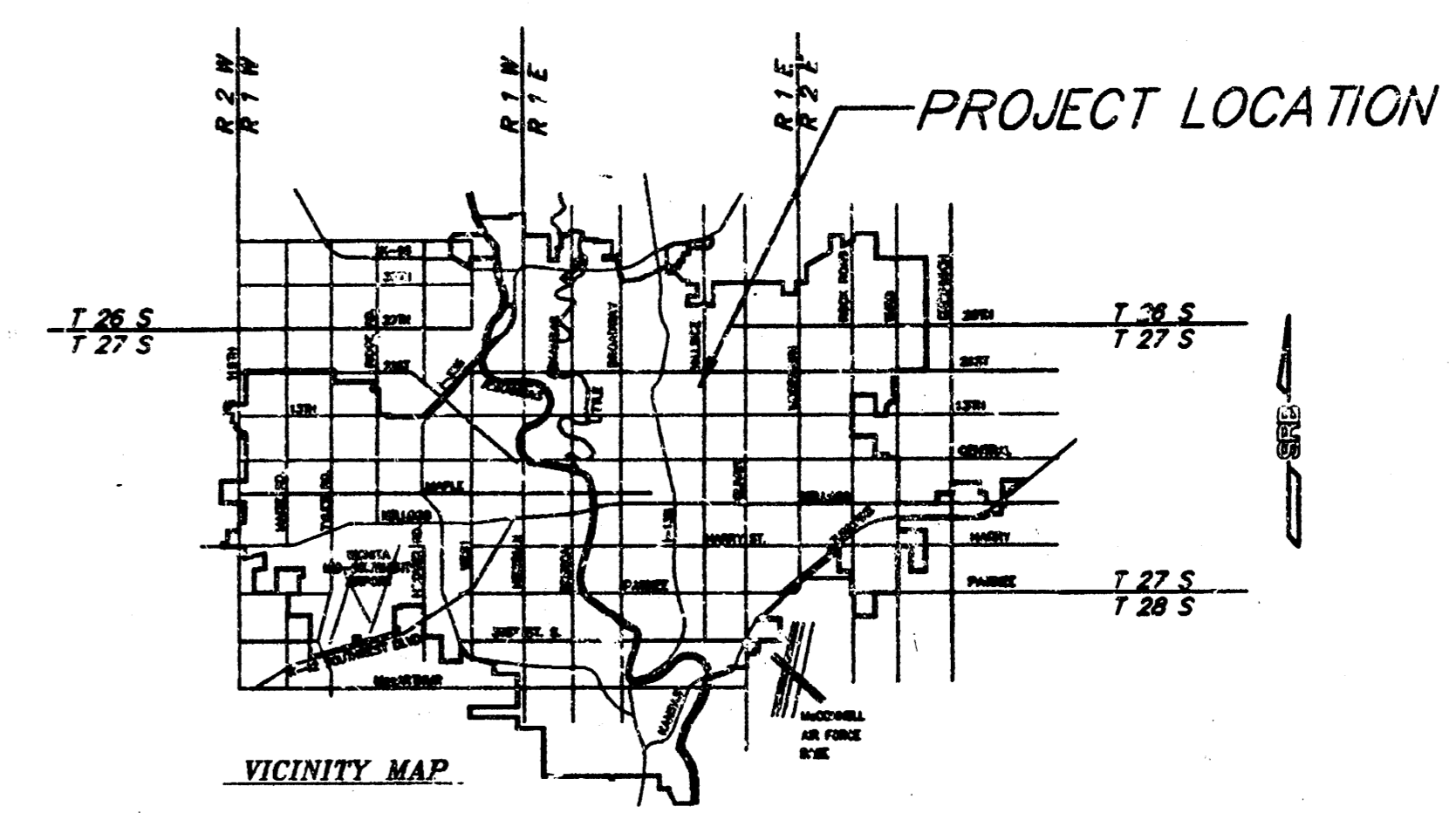


SRB
 Scale: PLAN 1" = 20'
 PROFILE 1" = 20' Horiz.
 1" = 5' Vert.

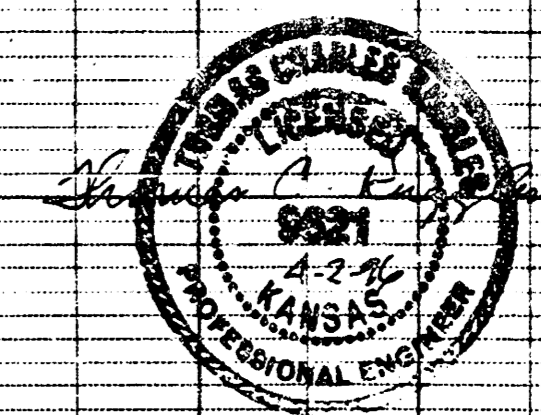
APPROVED AS NOTED
 BY CITY ENGINEER OF WICHITA

Sanitary Sewers _____
 Storm Sewers VRH 4/3/96
 Driveway Approaches _____
 Water Mains _____
 Paving _____

NOTE TO CONTRACTORS
 Inspection and testing for this project are to be provided by a Licensed Consulting Engineering Firm under contract with the Owner/Developer. Said inspection to be in accordance with the City of Wichita standard construction engineering practices and certified by a Licensed Professional Engineer. No work shall be performed in dedicated easements or public right-of-way by the Contractor without such inspection, nor shall any work be commenced without written authorization by the City Engineer.



BOOKED
 1/31/97
 MRS
 D-525



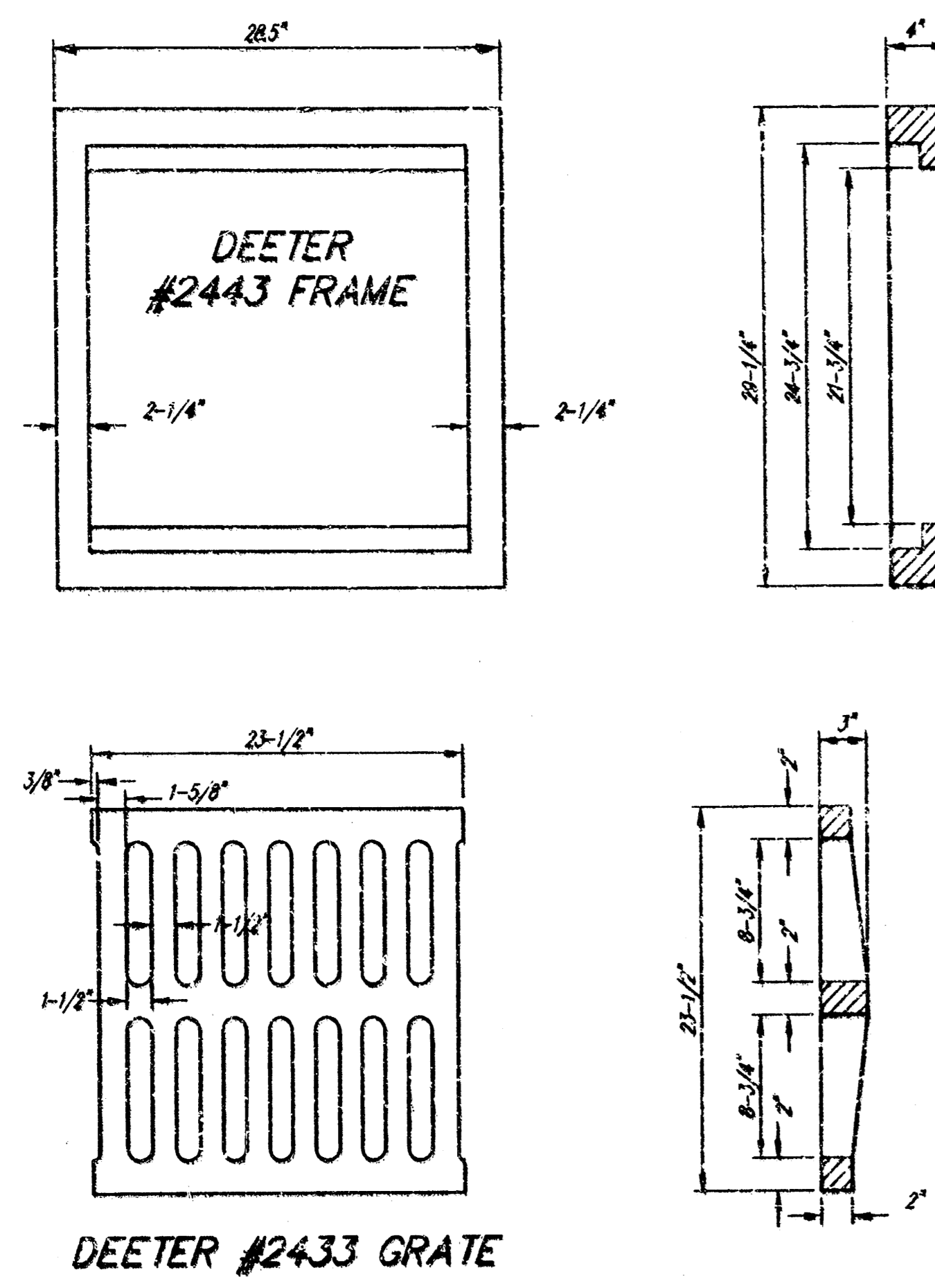
Revised As Built 10-9-96 YCB

SRB 924 NORTH MAIN WICHITA, KANSAS 67203 316-264-8008 FAX 264-4621

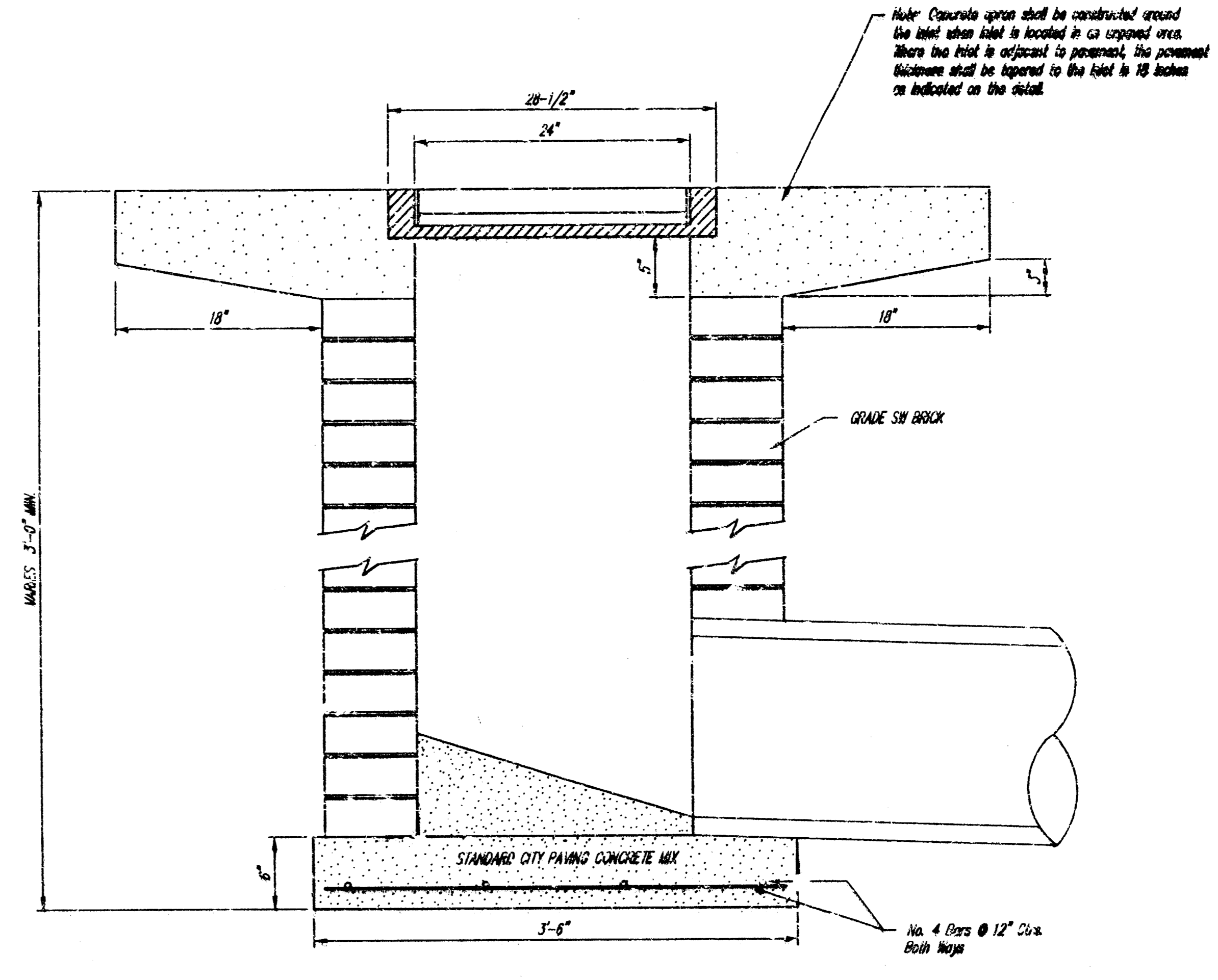
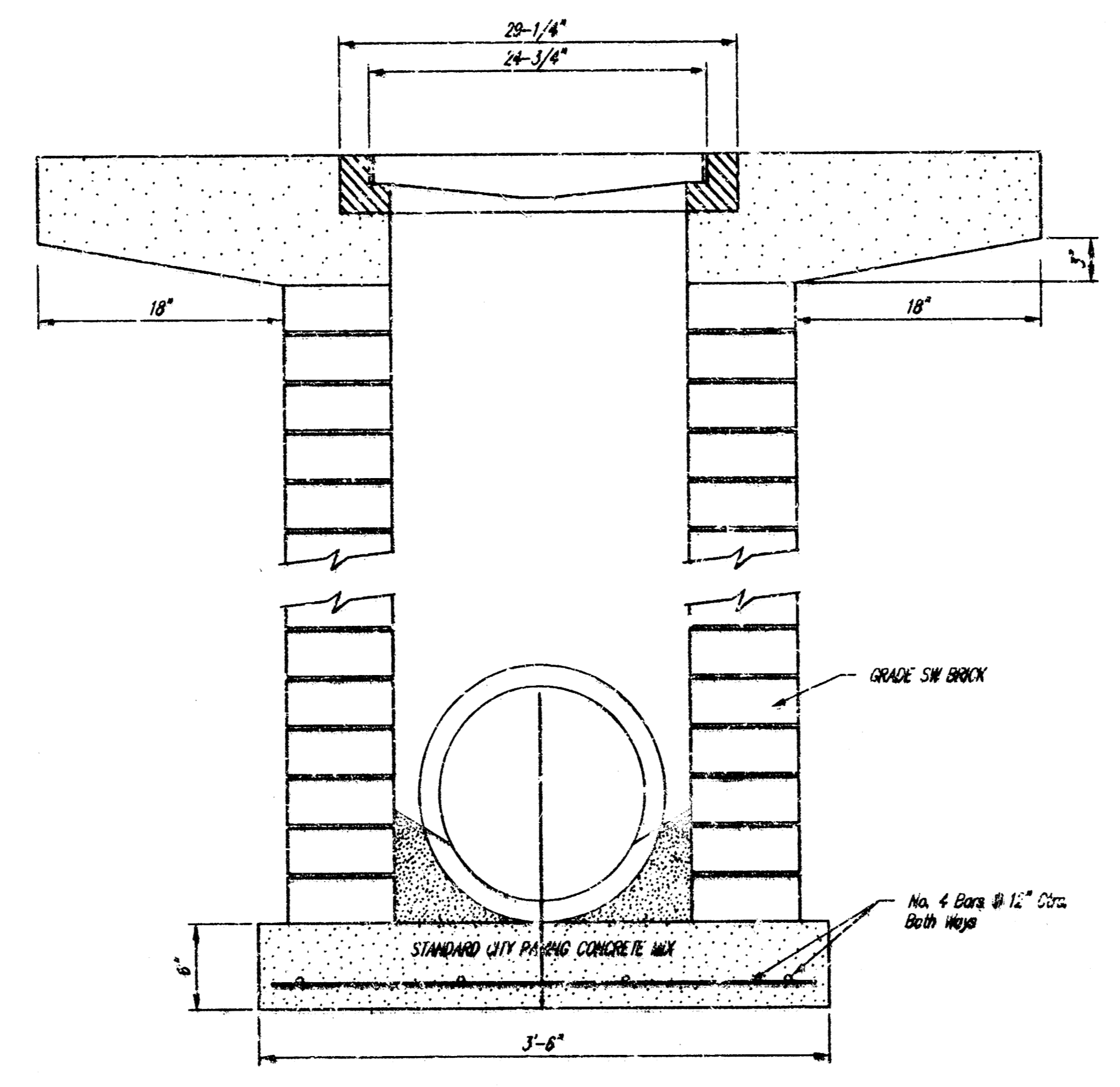
SAVOY, RUGGLES & BOHM, P.A.
 ENGINEERING & SURVEYING

PROJECT NUMBER
618PPS (507861)

DRAWN	DESIGN	REVIEW	DATE	UTILITY	SRB JOB
TEB	TCR		10-6-95	JCR	317E



24" x 24" Frame and Grate Detail



F. ACTIVE PROJECTION BROOKS (37E (NORTHEAST BRANCH LIBRARY) DROPTILT

DROP INLET DETAILS	
M.E. Lindebak, City Engineer City of Wichita, Kansas	
Project Number	3
G18 PRS (607861)	3