

# New Campus for HEARTSPRING

## Architectural

- A0.1 COVER SHEET
- C0.1 SITE SURVEY
- C1.1 ROUGH GRADING PLAN
- C1.2 ENLARGED SITE PLAN

## Structural

- SC1 STRUCTURAL DRAWINGS

City of Wichita  
private project: 621PPS (607861)  
City Engineer: Michael E. Lindebak P.E.

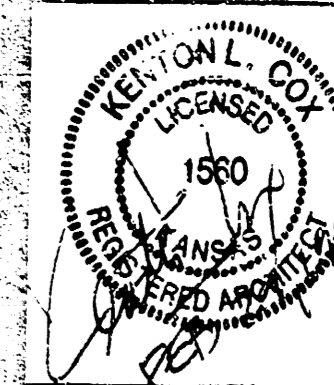
AS-BUILTS  
2-11-97

APPROVED AS NOTED  
BY CITY ENGINEER OF WICHITA

Sanitary Sewers \_\_\_\_\_  
Storm Sewers URH 4/4/96  
Driveway Approaches \_\_\_\_\_  
Water Mains \_\_\_\_\_  
Paving \_\_\_\_\_

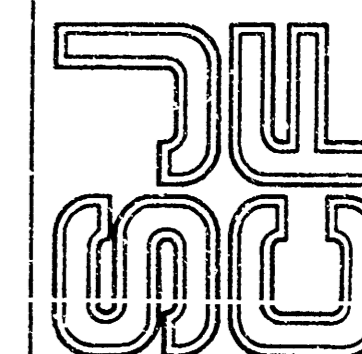
NOTE TO CONTRACTORS  
Inspection and testing for this project is to be provided by a Licensed Consulting Engineering Firm under contract with the Owner/Developer. Said inspection to be in accordance with the City of Wichita standard construction engineering practices and certified by a Licensed Professional Engineer. No work shall be performed in dedicated easements or public right-of-way by the Contractor without such inspection nor shall any work be commenced without written authorization by the City Engineer.

BOX CULVERT PACKAGE



SCHAEFFER JOHNSON COX FREY & ASSOCIATES PA

ARCHITECTURE ENGINEERING PLANNING & INTERIOR DESIGN  
200 SOUTH HILLBIE WICHITA, KANSAS 67211-8187  
EST. 1984-01-01 FAX 316 864-0171



KANSAS

New Campus for  
HEARTSPRING  
WICHITA

HEARTSPRING



REVISION DATE

PROJECT NO.  
2580.20

DATE  
1 MARCH, 1996

A0.1

FINAL

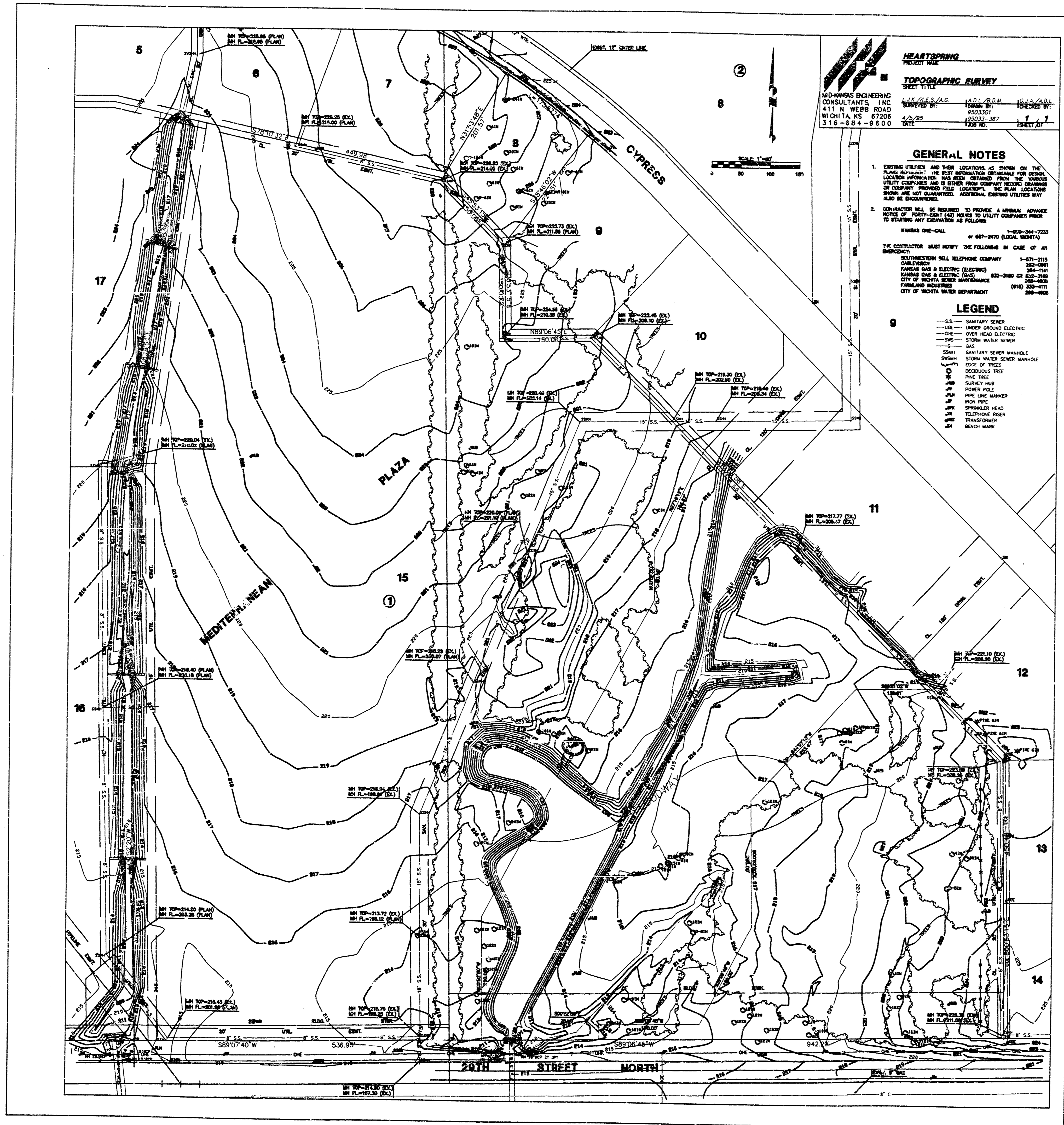
CREATED: 11/07/95  
PLOTTED: 02/19/96

DWG: M:\2580.00\SHARED\2580.20\COVER-BC  
DWGSCALE: 1"=0' = 1"=0'

CREATED: 10/06/95  
 PLOTTED: 02/19/96

DWG: M:\2580.00\SHARED\DWG\2580C0-1  
 DWGSCALE: 1" = 80'

FINAL



**HEARTSPRING WICHITA**  
**TOPOGRAPHIC SURVEY**  
 MID-KANSAS ENGINEERING CONSULTANTS, INC.  
 411 N. WEBB ROAD  
 WICHITA, KS 67208  
 316-844-8800

**GENERAL NOTES**

- EXISTING UTILITIES AND THEIR LOCATIONS AS SHOWN ON THIS DRAWING WERE OBTAINED FROM THE RECORD DRAWINGS OF THE UTILITY COMPANIES AND BY OTHER FROM COMPANY RECORD DRAWINGS. THE LOCATION OF UTILITIES NOT SHOWN ON THIS DRAWING ARE NOT GUARANTEED. ADDITIONAL EXISTING UTILITIES MAY BE ENCOUNTERED.
- CONTRACTOR WILL BE REQUIRED TO PROVIDE A MINIMUM ADVANCE NOTICE OF FORTY-EIGHT HOURS TO UTILITY COMPANIES PRIOR TO STARTING ANY EXCAVATION AS FOLLOWS:  
 KANSAS ONE-CALL 800-344-7323  
 BY 667-8476 (LOCAL SERVICE)

THE CONTRACTOR MUST NOTIFY THE FOLLOWING IN CASE OF AN EMERGENCY:

SOUTHWESTERN BELL TELEPHONE COMPANY	1-877-2115
CANADIAN	360-5881
KANSAS GAS & ELECTRIC (KGE)	284-1141
KANSAS GAS & ELECTRIC (KGE)	833-3840
KANSAS GAS & ELECTRIC (KGE)	833-3840
WATER	360-3888
FIRE	360-3888
FIRELAND SECURITY	(913) 333-9111
CITY OF WICHITA WATER DEPARTMENT	360-4608

**LEGEND**

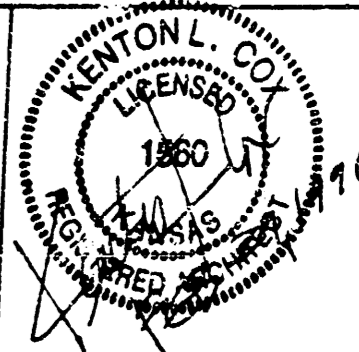
- S.S. — SANITARY SEWER
- S.E. — UNDER GROUND ELECTRIC
- O.E. — OVER HEAD ELECTRIC
- S.W. — STORM WATER SEWER
- G.A. — GAS
- S.S. — SANITARY SEWER MANHOLE
- S.W. — STORM WATER SEWER MANHOLE
- T. — TOP OF TREE
- D. — DECIDUOUS TREE
- P. — PINE TREE
- S. — SURVEY MARK
- P. — POWER POLE
- P.L. — POLE LINE MARKER
- H.P. — HIGH POINT
- S.H. — SPRINKLER HEAD
- T.H. — TELEPHONE HEAD
- T.O. — TRANSFORMER
- B.M. — BENCH MARK

**BENCHMARKS**

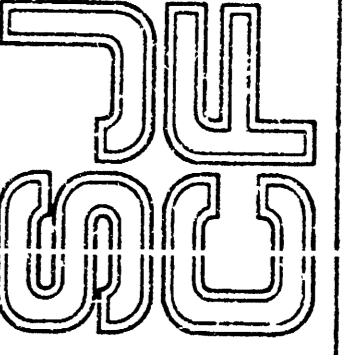
- BM 1 " " CUT ON S. T.C. 29TH ST. N. +530' W. OF THE CL. OF CYPRESS  
 ELEV. = 219.70
- BM 2 CITY DISC IN NW CORNER OF RCB ON 29TH ST. N. +100' E. OF THE S. 1/4 CORNER SEC. 32-265-2E  
 ELEV. = 215.65
- BM 3 CITY DISC IN NE CORNER OF RCB ON 29TH ST. N. +550' W. OF THE S. 1/4 CORNER SEC. 32-265-2E  
 ELEV. = 215.83
- BM 4 " " POST 2' S. & 30' E. OF THE NW COR. OF LOT 5-1 MEDITERRANEAN PLAZA  
 ELEV. = 229.75
- BM 5 " " CUT T.C. @ SE CORNER LOT 8 BLOCK 1 ON CYPRESS  
 ELEV. = 223.64
- BM 6 " " CUT TOP HUB/GUARD ON NE CORNER RCB CROSSING CYPRESS @ NW CORNER LOT 9 BLOCK 2  
 ELEV. = 226.43
- BM 7 " " CUT TOP HUB/GUARD ON NW CORNER RCB CROSSING CYPRESS @ N. CORNER LOT 12 BLOCK 1  
 ELEV. = 223.96

**GENERAL NOTES**

**FOR INFORMATION ONLY**  
 THIS LAND SURVEY WAS PREPARED BY MID-KANSAS ENGINEERING CONSULTANTS, INC., AN INDEPENDANT CONTRACTOR TO AND FOR HEARTSPRING. THE LAND SURVEY WAS PROVIDED TO SCHAEFER JOHNSON COX FREY & ASSOCIATES, P.A. WHO PLACED ON SHEETS C0.1, C1.0, C1.1, C1.2, & C1.3, THE BUILDING OUTLINE AND POSITIONING DIMENSIONS ON THAT DRAWING. SCHAEFER JOHNSON COX FREY & ASSOCIATES, P.A. ASSUMES NO LIABILITY FOR THE ACCURACY AND COMPLETENESS OF THE LAND SURVEY.



SCHAEFER JOHNSON COX FREY & ASSOCIATES PA  
 ARCHITECTURE ENGINEERING PLANNING & INTERIOR DESIGN  
 2800 BLDG 17TH HILL DRIVE  
 WICHITA, KANSAS 67208  
 316.844.8838 FAX 316.844.8838



KANSAS

New Campus for  
**HEARTSPRING**  
 WICHITA

**HEARTSPRING**

PROVIDED FOR INFORMATION ONLY

**SITE SURVEY**  
 SCALE: 1" = 80'

REVISION DATE

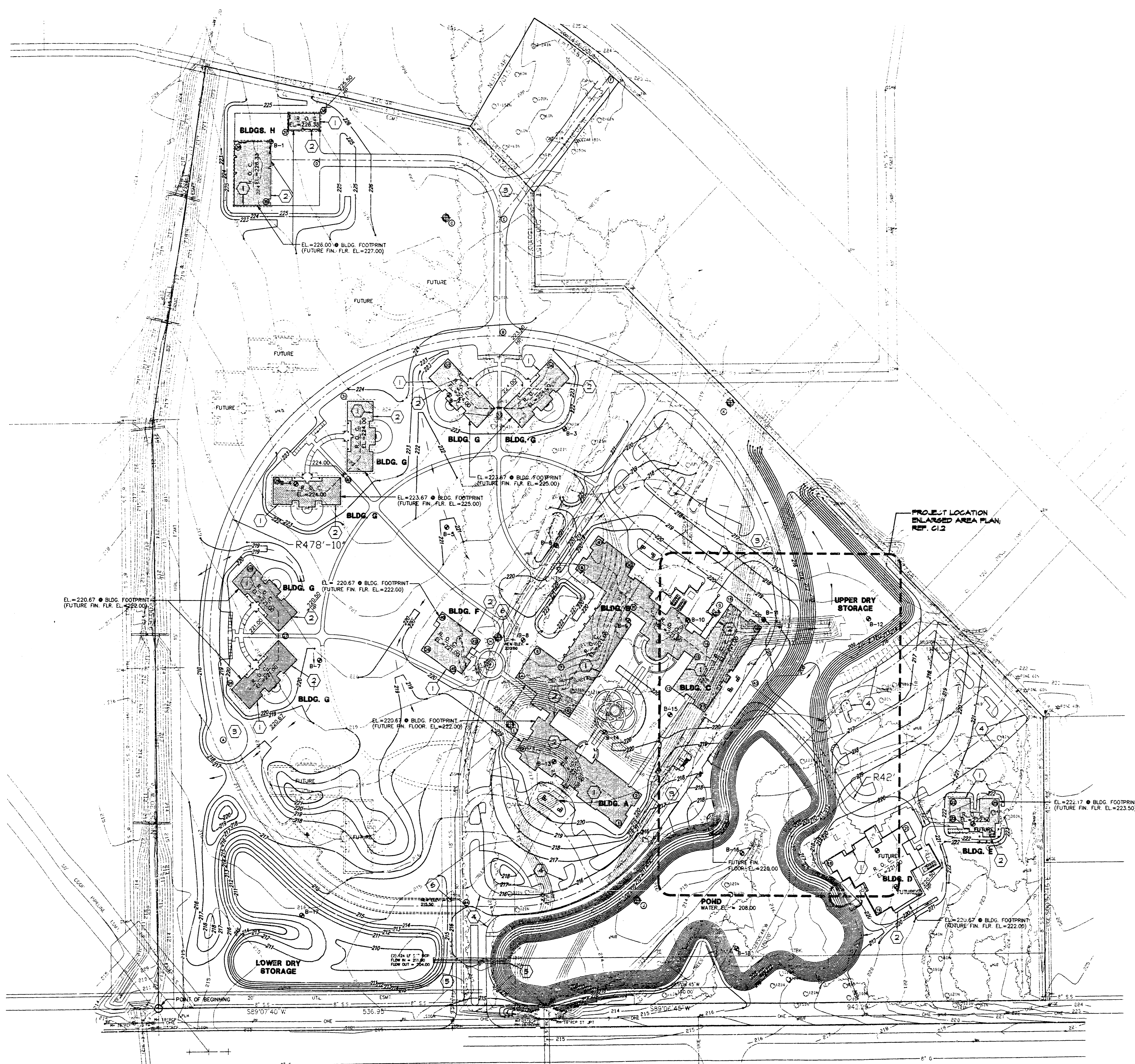
PROJECT NO.  
 2580.20

DATE  
 1 MARCH 1996

C0.1

DWG: M:\2580.DWG SHARED, 2580.20, 2580C1-1  
 DWGSCALE: 1" = 60'  
 CREATED: 10/06/95  
 PLOTTED: 02/20/96

FINAL



**GENERAL NOTES** SHEET C1.1

- A. REFER TO SITE SURVEY, SHEET C0.1 FOR ALL UTILITY DESCRIPTIONS, NOTES AND LEGAL DESCRIPTION PERTAINING TO SITE SURVEY.
- B. THIS CONTRACT DOES NOT INCLUDE ANY CONCRETE FOOTINGS, BUILDINGS, CONCRETE CURBS OR ASPHALT PAVING. REFERENCES TO THESE ITEMS ARE FOR INFORMATION ONLY.
- C. ALL PROPOSED CONTOURS AND NEW SPOT ELEVATIONS SHOWN ON DRAWINGS ARE FINAL GRADES UNLESS NOTED OTHERWISE AND GRADING CONTRACTOR TO PREPARE GRADES TO FINISH GRADE ELEVATIONS. ALLOW FOR 4" TOPSOIL TO BE ADDED AT A LATER DATE.
- D. BUILDING CORNERS ARE LOCATED BY COORDINATE DIMENSIONS STARTING FROM THE SW PROPERTY CORNER (G.O.D.) NUMBERS ARE IN FEET WITH THE FIRST NUMBER BEING "X" DIRECTION AND THE SECOND BEING "Y" DIRECTION.
- E. REMOVE 4" OF TOPSOIL IN ALL AREAS TO BE DISTURBED AND STOCKPILE. COORDINATE LOCATIONS WITH ARCHITECT. DO NOT USE STOCKPILE UNTIL END OF PROJECT.
- F. REFER TO C1.0 FOR TREE REMOVAL PLAN.
- G. MINIMUM POND ELEVATION 202.00, MAY BE UTILIZED AS REQUIRED FOR ADDITIONAL BORROW AREA.
- H. CONTRACTOR TO VERIFY LOCATION OF UTILITIES PRIOR TO EXCAVATION. CALL KANSAS ONE CALL (687-2470) 48 HOURS IN ADVANCE.
- I. ALL DISTURBED AREAS ARE TO BE SEEDED W/ANNUAL RYEGRASS.
- J. MAINTAIN POSITIVE DRAINAGE AT ALL TIMES.
- K. PROVIDE AN EARTH-LIKE LINER OF NATIVE SOILS 12" THICK PER GEOTECHNICAL ENGINEERING REPORT AT POND AS NOTED ON PLAN. LINER TO BEGIN AT NORMAL POOL ELEVATION (208.00) AND PROCEED DOWNWARD TO COVER ENTIRE POND SIDE AND BOTTOM.
- L. ELEVATION GIVEN AT BLDG. FOOTPRINT REPRESENTS TOP OF 6" COVER OVER ZONE OF LIGHTLY SWELL SUSCEPTIBLE MATERIAL, AS PER GEOTECHNICAL ENGINEERING REPORT.

**KEYED NOTES** SHEET C1.1

1. FUTURE HEARTSPRING BUILDING FOOTPRINT, (N.I.C.)
2. EXTENT OF STABILIZED BUILDING PAD MATERIAL (REF. SOILS REPORT & SPEC.)
3. FUTURE ASPHALT DRIVES & STREETS (N.I.C.)
4. FUTURE CONCRETE CURBS & GUTTER (N.I.C.)
5. REINFORCED CONCRETE PIPE WITH END SECTIONS BY ROUGH GRADING CONTRACTOR.
6. RAISE EXISTING MANHOLE F.W. AS NOTED.
7. FUTURE REINFORCED BOX CULVERT & TRAFFICWAY, (N.I.C.)

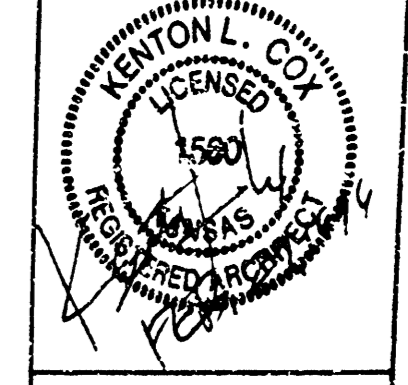
**CONSTRUCTION COORDINATES**

① 765-1", 291-4"	⑩ 559-10", 949-6"
② 802-8", 344-9"	⑪ 645-7", 1035-3"
③ 590-8", 414-3"	⑫ 179-5", 1276-3"
④ 489-6", 529-10"	⑬ 117-10", 1377-11"
⑤ 678-10", 466-10"	⑭ 207-10", 1396-2"
⑥ 625-0", 580-3"	⑮ 259-6", 1422-10"
⑦ 684-2", 553-4"	⑯ 433-0", 572-0"
⑧ 688-9", 702-4"	⑰ 486-11", 533-4"
⑨ 726-4", 755-9"	⑱ 486-8", 533-10"
⑩ 789-7", 711-2"	⑲ 530-2", 588-3"
⑪ 782-9", 635-11"	⑳ 981-2", 521-3"
⑫ 852-0", 513-11"	㉑ 503-8", 165-7"
⑬ 886-6", 562-10"	
⑭ 906-11", 591-10"	
⑮ 947-3", 649-1"	
⑯ 1000-8", 611-5"	⑳ 109-10", 429-3", 35' R.
⑰ 905-5", 478-3"	㉑ 559-9", 1071-10"
⑱ 1105-8", 240-7"	㉒ 469-9", 1246-10", 90' R. ● C.L.
㉑ 1196-2", 155-10"	㉓ 259-6", 1348-10"
㉒ 1277-2", 188-9"	㉔ 559-9", 1258-10"
㉓ 1247-7", 304-1"	㉕ 742-9", 1486-9"
㉔ 316-8", 342-5"	㉖ 923-8", 635-0", 112-6" R. ● C.L.
㉕ 1316-8", 303-1"	㉗ 559-9", 593-0", 478'10" R. ● C.L.
㉖ 1392-0", 281-2"	㉘ 795-6", 177-7", 388-0" R. ● C.L.
㉗ 1398-0", 342-6"	㉙ 945-2", 868-5"
㉘ 117-6", 507-4"	㉚ 580-8", 454-9", 289-1.76" R.
㉙ 333-4", 593-1"	
㉚ 117-6", 678-10"	
㉛ 186-5", 845-2"	
㉜ 307-9", 845-2"	
㉝ 307-9", 985-6"	
㉞ 474-1", 1035-3"	

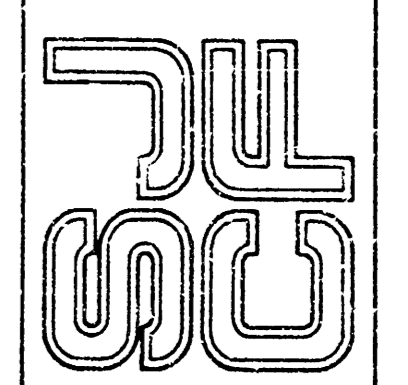
**LEGEND** SHEET C1.1

- 215 — EXISTING CONTOUR
- 219 — NEW CONTOUR
- R.O.C. RIDGE OF CROWN
- — DRAINAGE SWALE
- HP HIGH POINT
- B-14 BORING LOCATION
- CENTER POINT OF ARC
- ⑤ BUILDING CORNER NUMBER AND CONSTRUCTION COORDINATES

FOR INFORMATION ONLY  
**ROUGH GRADING  
 SITE PLAN**  
 SCALE: 1" = 60'



SCHAEFER JOHNSON COX FREY & ASSOCIATES, P.A.  
 ARCHITECTURE ENGINEERING PLANNING & INTERIOR DESIGN  
 810 SOUTH HILLBIE WICHITA, KANSAS 67211-1817  
 (316) 684-0171 FAX (316) 684-8936



KANSAS

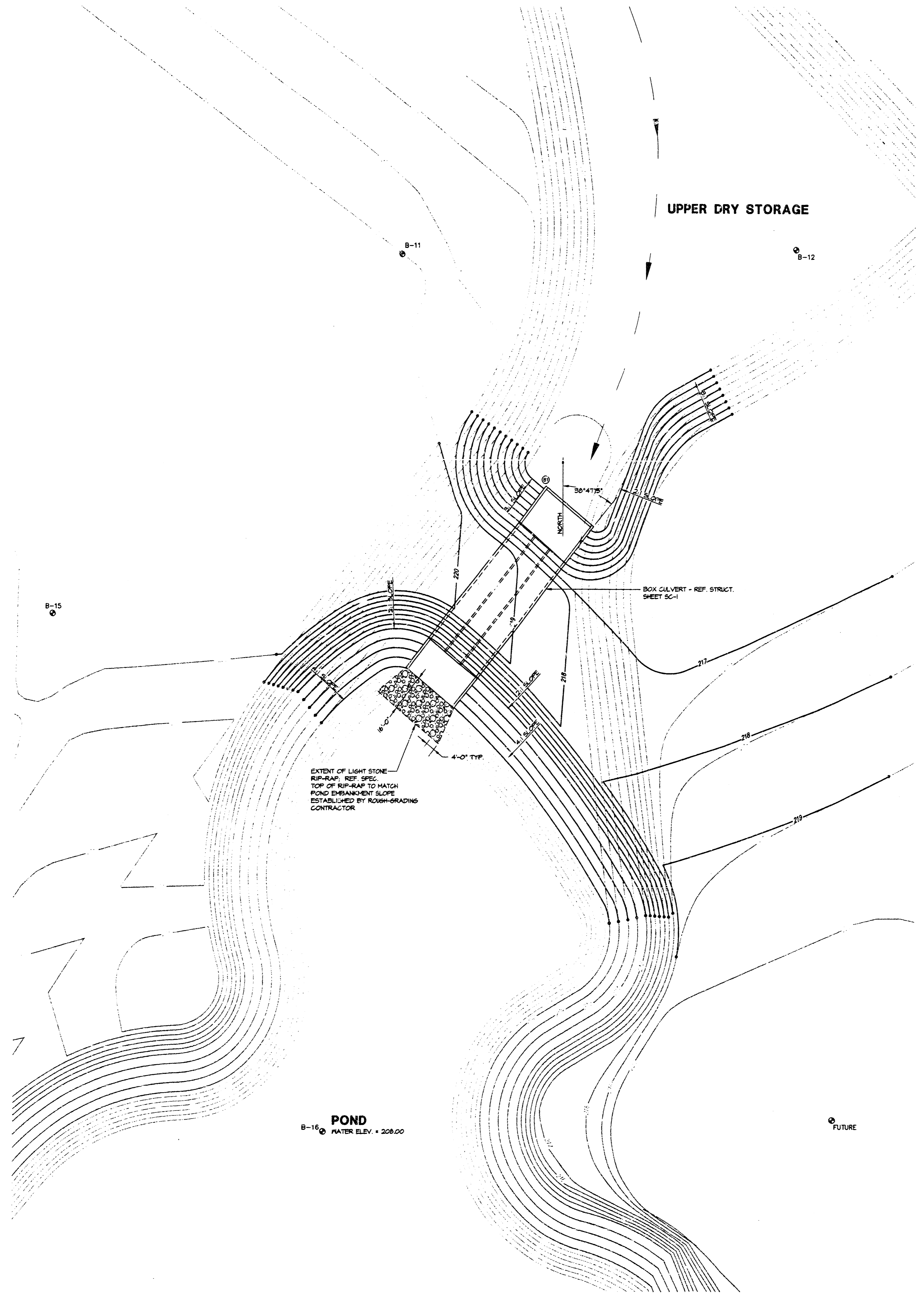
New Campus for  
**HEARTSPRING  
 WICHITA**

**HEARTSPRING  
 WICHITA**

REVISION DATE	
PROJECT NO.	2580.20
DATE	1 MARCH 1996
<b>C1.1</b>	

DWG: M:\2580.00\SHARED\2580.20\2580C1-2  
 DWGSCALE: 1" = 20'  
 CREATED: 02/19/96  
 PLOTTED: 02/20/96

FINAL



**GENERAL NOTES** SHEET C1.2

- A. REFER TO SITE SURVEY, SHEET CO.1 FOR ALL UTILITY DESCRIPTIONS, NOTES AND LEGAL DESCRIPTION PERTAINING TO SITE SURVEY.
- B. THIS CONTRACT DOES NOT INCLUDE ANY BUILDINGS, CONCRETE CURBS OR ASPHALT PAVEMENT. REFERENCES TO THESE ITEMS ARE FOR INFORMATION ONLY.
- C. ALL PROPOSED CONTOURS AND NEW SPOT ELEVATIONS SHOWN ON DRAWINGS ARE FINAL GRADES UNLESS NOTED OTHERWISE AND BOX CULVERT CONTRACTOR TO PREPARE GRADES TO ROUGH GRADE ELEVATIONS ALLOW FOR 4" TOPSOIL TO BE ADDED AT A LATER DATE.
- D. BUILDING CORNERS ARE LOCATED BY COORDINATE DIMENSIONS STARTING FROM THE SW PROPERTY CORNER (0,0,0). NUMBERS ARE IN FEET WITH THE FIRST NUMBER BEING "X" DIRECTION AND THE SECOND BEING "Y" DIRECTION.
- E. CONTRACTOR TO VERIFY LOCATION OF UTILITIES PRIOR TO EXCAVATION. CALL KANSAS ONE CALL (887-2470) 48 HOURS IN ADVANCE.
- F. ALL DISTURBED AREAS ARE TO BE SEEDED W/ANNUAL PREGRASS.
- G. MAINTAIN POSITIVE DRAINAGE AT ALL TIMES.
- H. WHERE POND-SIZE OF BOX CULVERT GRADES HAVE BEEN DISTURBED FROM CONSTRUCTION OF CULVERT & GRADING, REPAIR EARTHEN LAKE LINER WITH NATIVE SOILS 12" THICK PER GEOTECHNICAL ENGINEERING REPORT AT POND AS NOTED ON PLAN. LINER TO BEGIN AT NORMAL POOL ELEVATION (208.00) AND PROCEED DOWNWARD TO COVER ENTIRE POND SIDE AND BOTTOM.
- J. ALL CONTOURS SHOWN SCREENED, REPRESENT WORK COMPLETED BY ROUGH GRADING PACKAGE, ALL CONTOURS SHOWN SOLID, REPRESENT WORK TO BE COMPLETED DURING THIS BOX CULVERT PACKAGE, BY THE BOX CULVERT CONTRACTOR.

**CONSTRUCTION COORDINATES**

© 1067'-7.5", 526'-3"

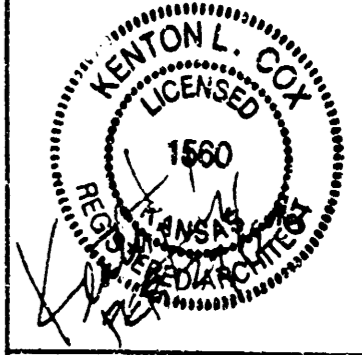
**LEGEND** SHEET C1.2

- EXISTING CONTOUR (BY ROUGH GRADING CONTRACTOR)
- NEW CONTOUR (BY BOX CULVERT CONTRACTOR)
- R.O.C. RIDGE OF CROWN
- DRAINAGE SWALE
- HP HIGH POINT
- ⊙ B-14 BORING LOCATION
- ⊙ CENTER POINT OF ARC
- ⊙ BOX CULVERT CONSTRUCTION COORDINATE

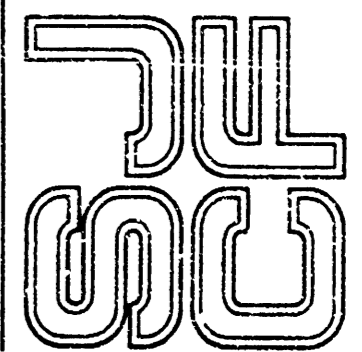


ENLARGED AREA SITE PLAN

**SITE GRADING & BOX CULVERT PLAN**  
 SCALE: 1" = 20'-0"



SCHAFFER JOHNSON COX FREY & ASSOCIATES PA  
 ARCHITECTURE ENGINEERING PLANNING & INTERIOR DESIGN  
 830 SOUTH HILLSIDE WICHITA, KANSAS 67214-1817  
 (316) 864-0171 FAX (316) 864-5550

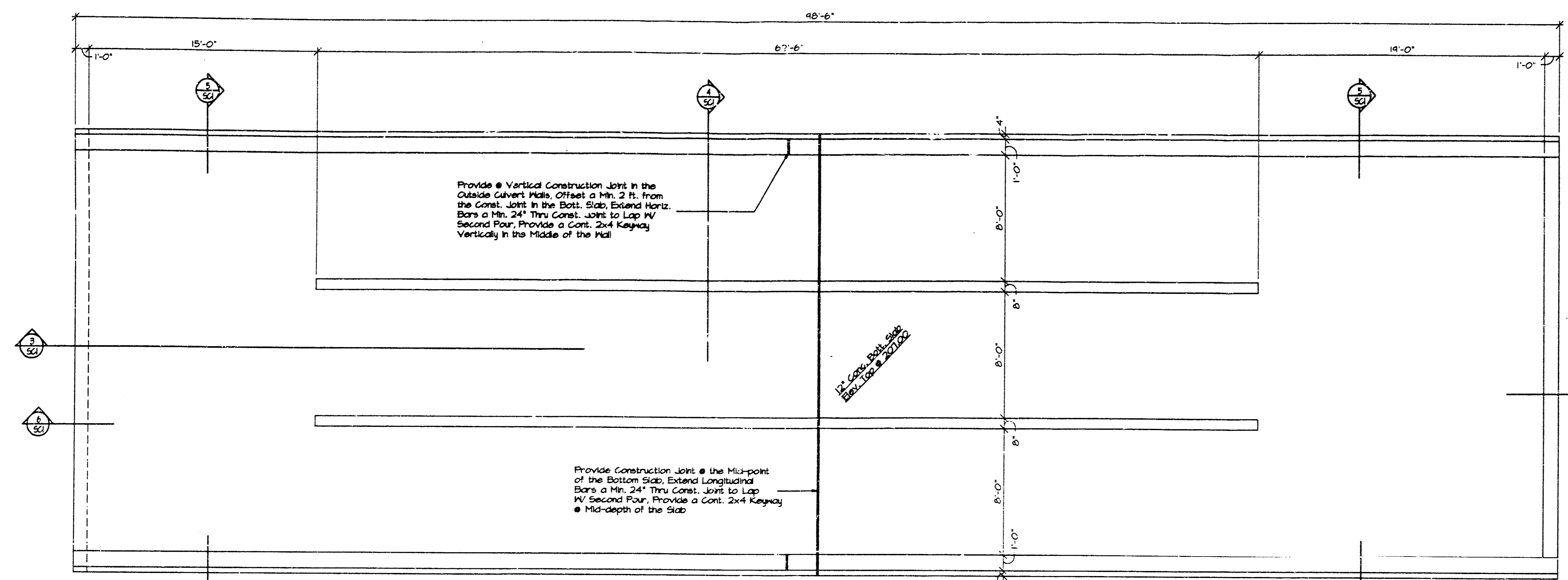


KANSAS

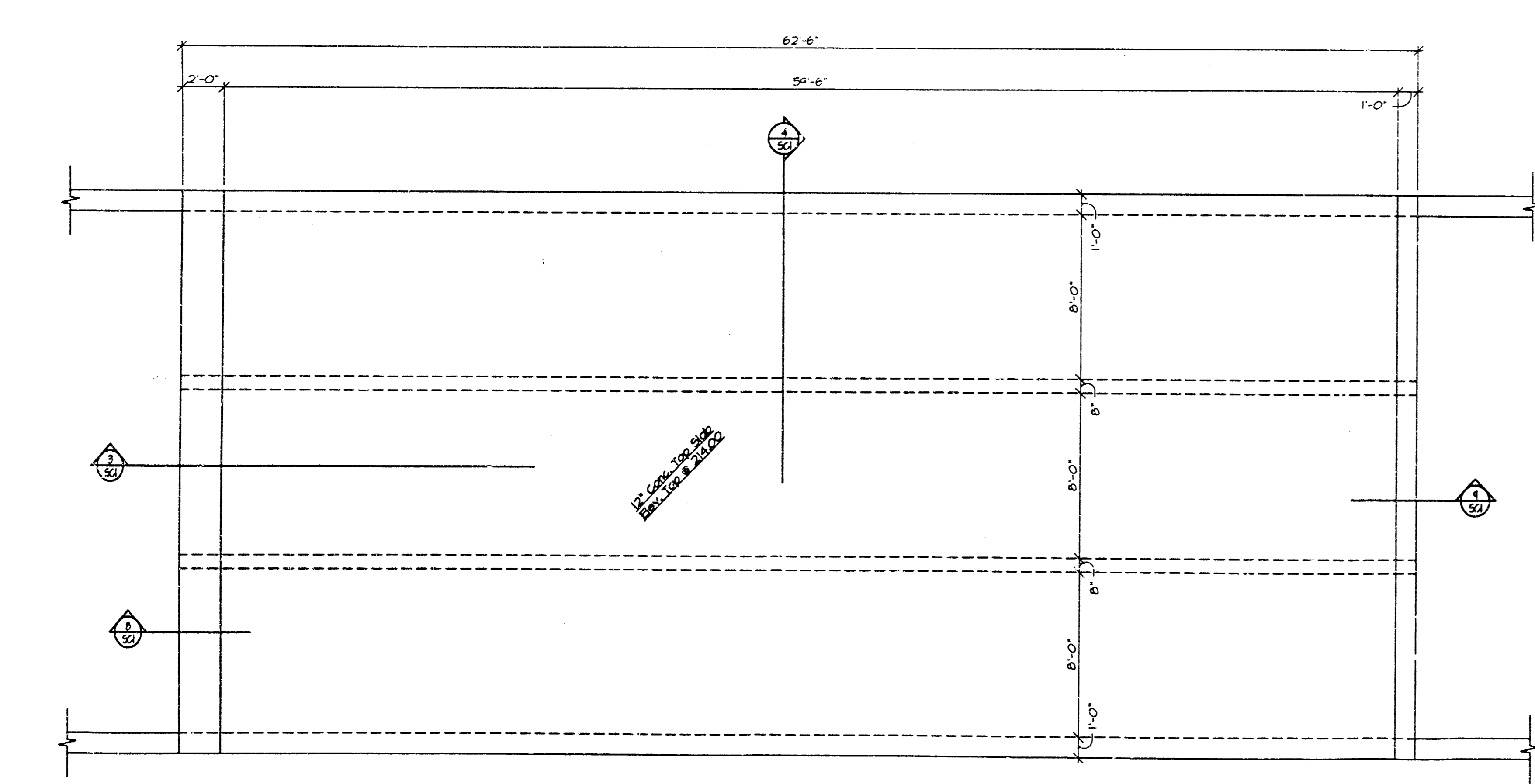
New Campus for  
**HEARTSPRING**  
 WICHITA

**HEARTSPRING**

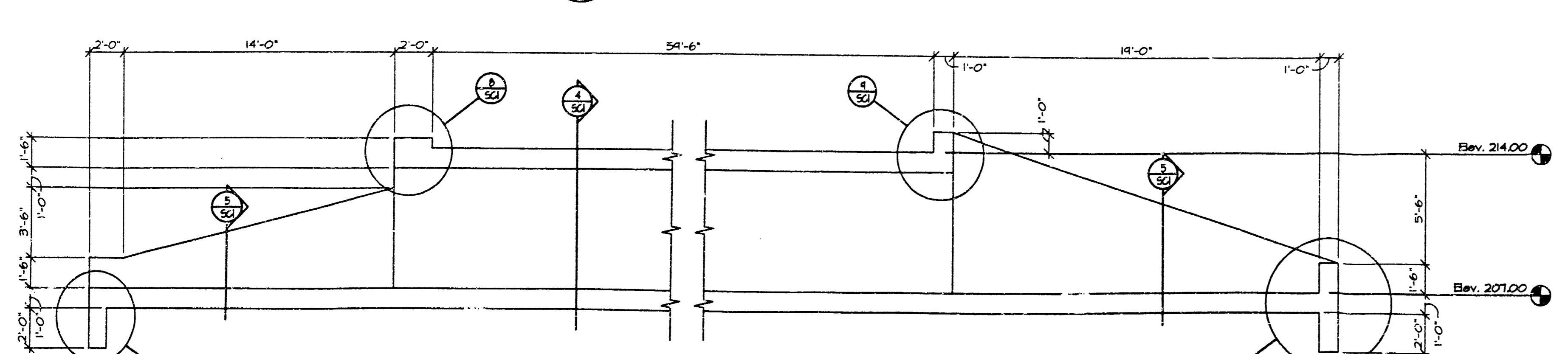
REVISION DATE	PROJECT NO. 2580.20
DATE 1 MARCH, 1996	<b>C1.2</b>



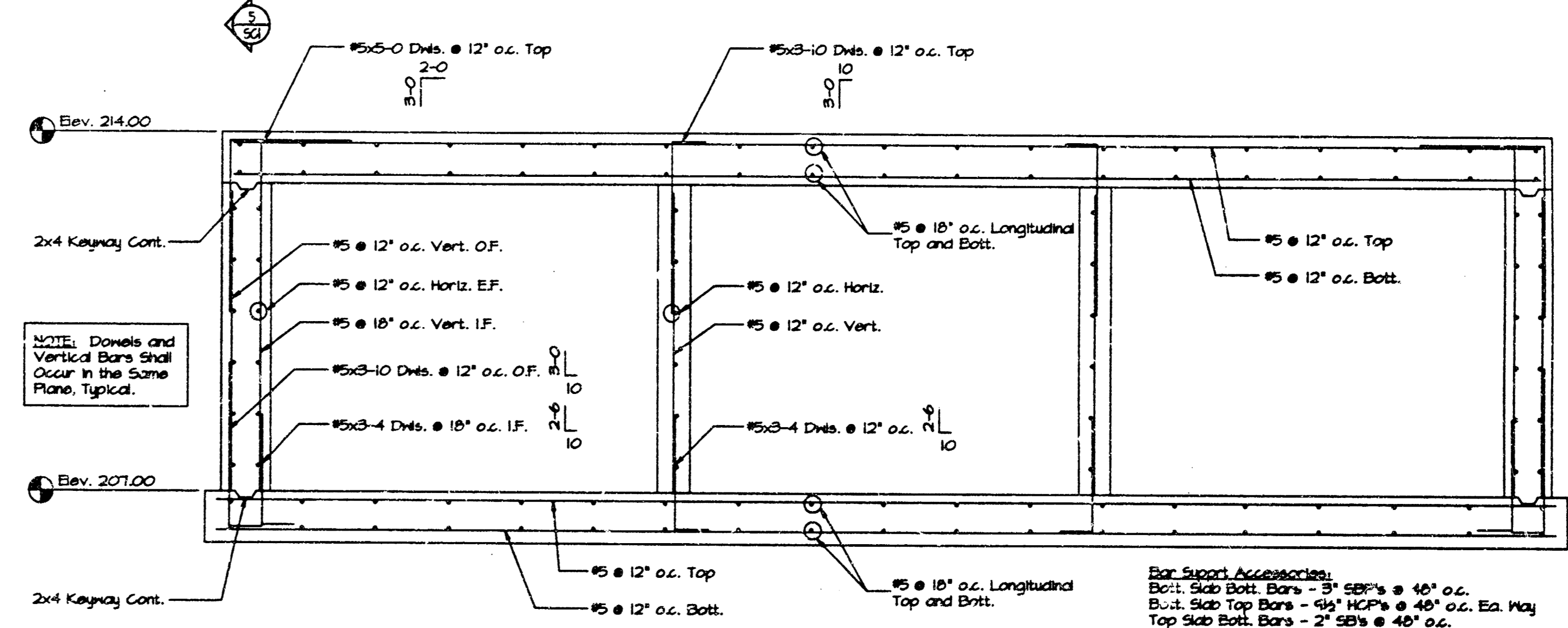
1 BOX CULVERT BOTTOM SLAB PLAN  
1/4" = 1'-0"



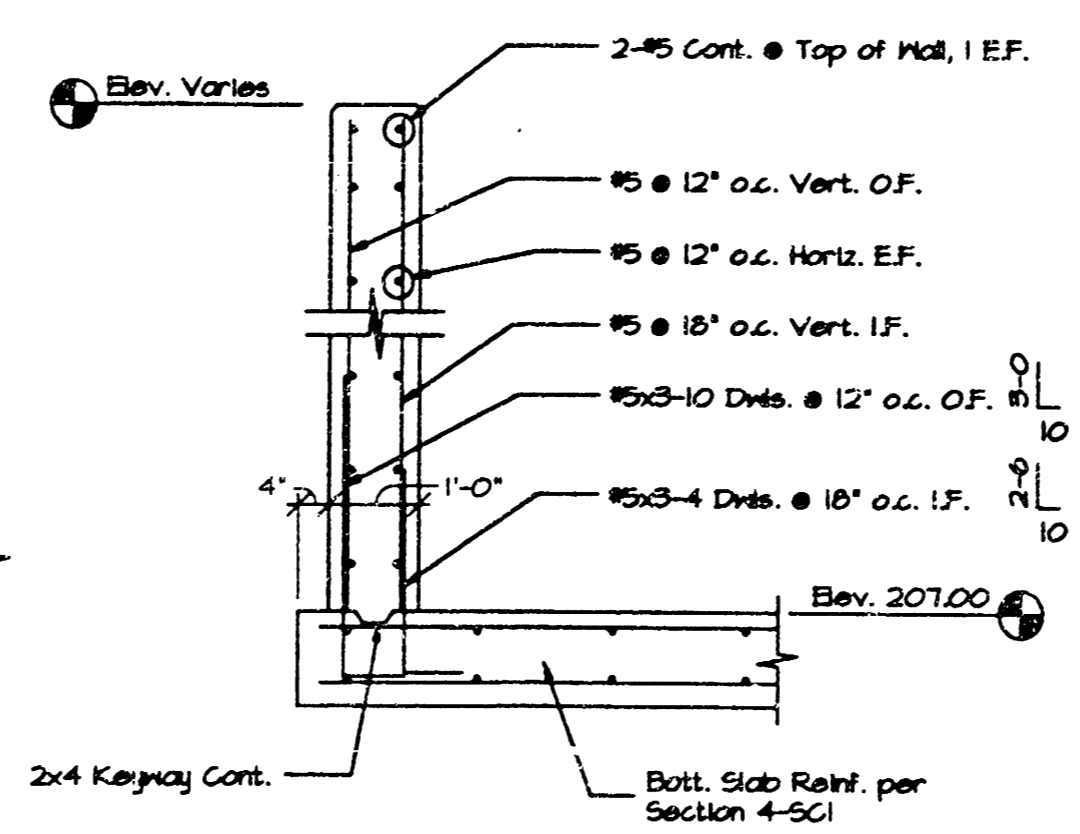
2 BOX CULVERT TOP SLAB PLAN  
1/4" = 1'-0"



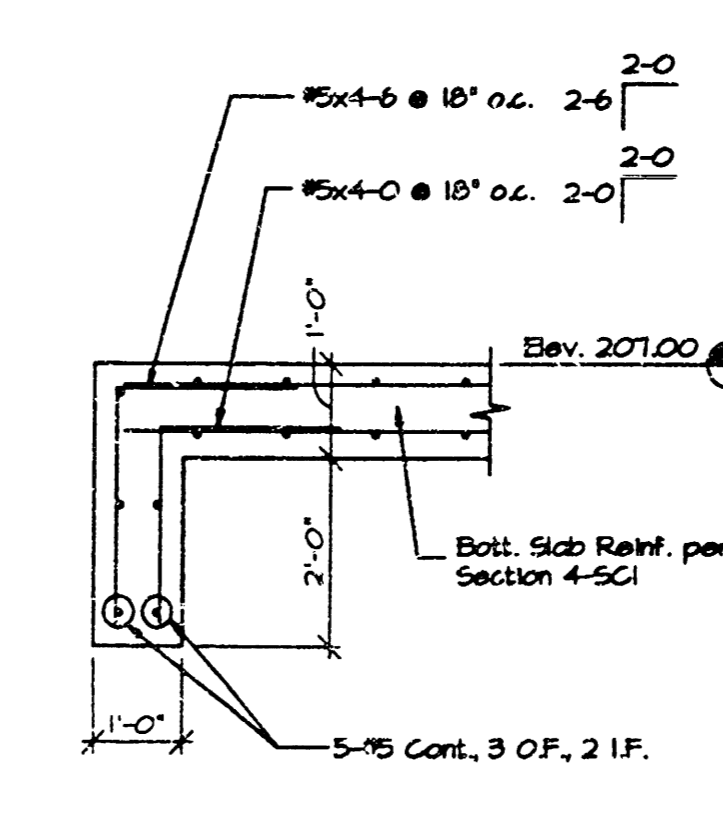
3 BOX CULVERT LONGITUDINAL SECTION  
1/4" = 1'-0"



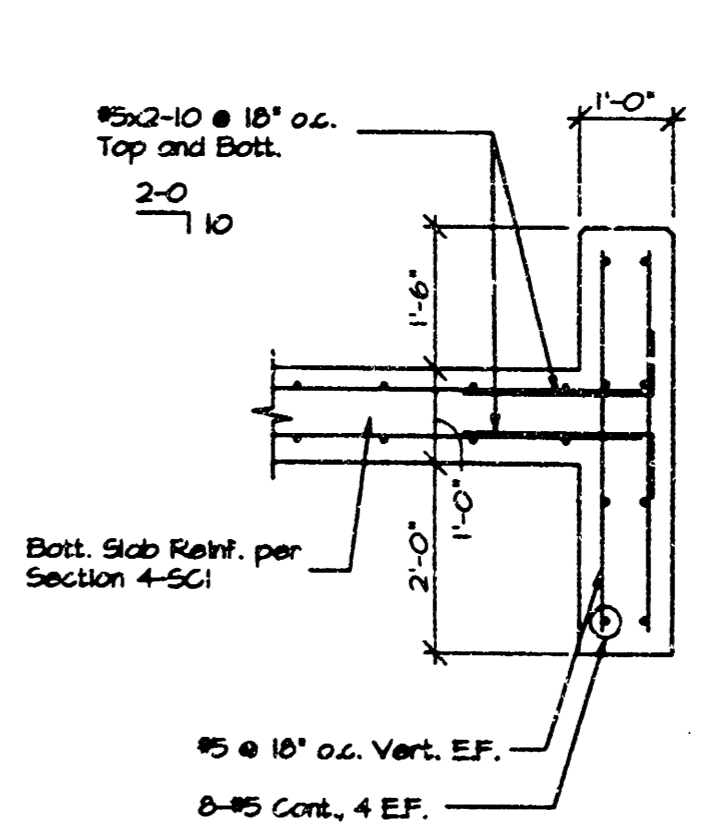
4 BOX CULVERT CROSS SECTION  
1/4" = 1'-0"



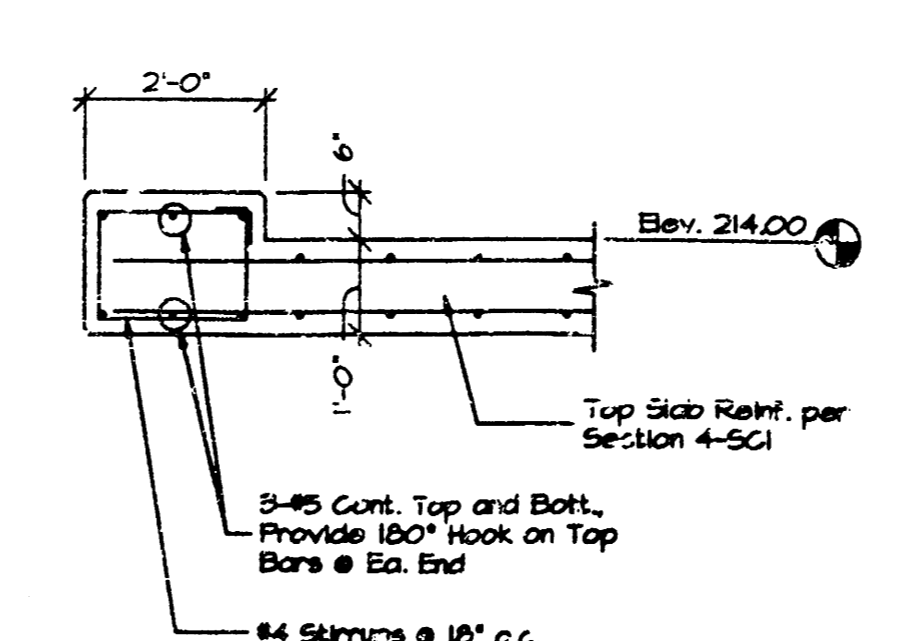
5 SECTION  
1/4" = 1'-0"



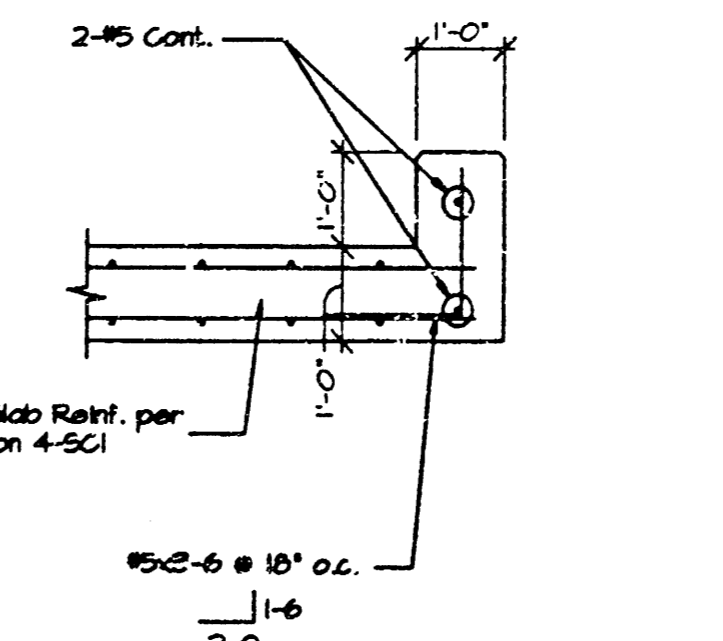
6 SECTION  
1/4" = 1'-0"



7 SECTION  
1/4" = 1'-0"



8 SECTION  
1/4" = 1'-0"



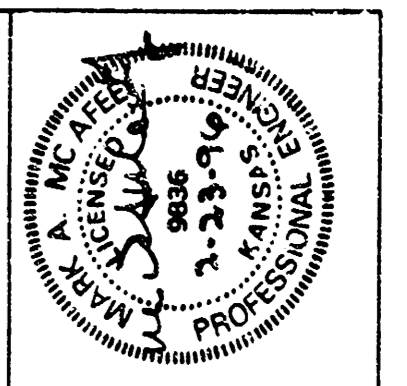
9 SECTION  
1/4" = 1'-0"

**GENERAL STRUCTURAL NOTES**  
Structure is designed for 100-44 and 1520-44 loading per AASHTO specifications.  
General contractor shall develop, provide, and maintain forms, bracing, and other methods as required to support the construction loads and stabilize the structure during the construction process.  
All formwork and shoring constructed to support the top slab shall remain in place for a minimum of 14 days after the slab has been placed and until the concrete has attained the specified compressive strength.  
No formwork, bracing, or shoring shall be removed from the structure or on top of the structure until all elements of the structure have cured for a minimum of 2 days and the concrete has attained the specified compressive strength.

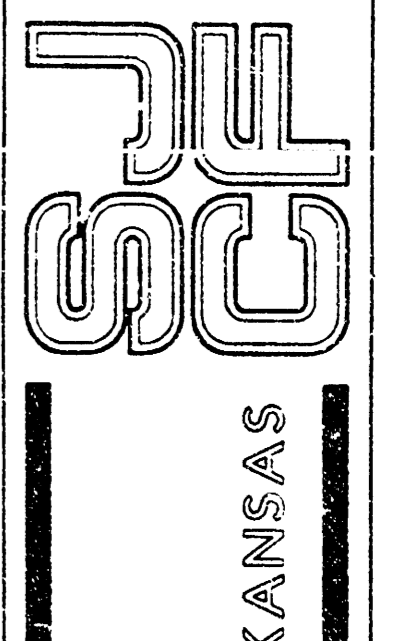
**CAST-IN-PLACE CONCRETE**  
All concrete shall have a minimum compressive strength of 4000 psi at 28 days.  
All aggregate for normal weight concrete shall meet ASTM C33. Aggregates shall be proportioned such that the design shall contain a minimum of 50% coarse aggregate by gross requirements set forth in ASTM C33. Coarse aggregate shall meet No. 61 grading requirements.  
All concrete shall be proportioned with a maximum water to cement ratio of 0.40.  
All concrete shall have from 48 to 78 strands of concrete.  
Concrete shall be in strict accordance with the current "ACI Manual of Concrete Practice" to remain shall be placed in concrete.  
Chamfer all exposed edges of concrete 1/4".

**REINFORCING STEEL**  
All reinforcing steel meet ASTM A615-400000 including supplementary requirements 51.  
Reinforcing shall be continuous and lapped a minimum of 24" or 30 bar diameters whichever is greater, unless otherwise noted.  
Locations of lap splices shall only occur at locations shown and approved on the reinforcing steel shop drawings.  
Reinforcing shall be detailed according to the ACI Detailing Manual under the supervision of a structural engineer licensed in the state where the project is located.  
All reinforcing steel shall be placed and supported by plastic coated bar supports at a maximum spacing of 48" in excess for the bottom slab bars which shall be supported by non-protected bar supports with bottom plates.  
Provide corner lap bars to match in size and spacing of all horizontal bars.  
Provide 3" steel tubes with continuous bottom plate at 4'-0" maximum centers for positioning of bottom slab bottom bars.  
Mark each bundle of reinforcing with rebarproduct.

**CONCRETE COVERAGES**  
Place and support all reinforcing steel to provide the following concrete coverages prior to and during concrete placement:  
Bottom bars of bottom slab - 3 in.  
Top bars of bottom slab - 2 in.  
Bottom bars of top slab - 2 in.  
Top bars of top slab - 2 in.  
Wall vertical bars - 2 in.



SCHAEFER JOHNSON COX FREY & ASSOCIATES P.A.  
ARCHITECTURE ENGINEERING PLANNING & INTERIOR DESIGN  
600 SOUTH HALLSIEG  
WICHITA, KANSAS 67211-1517  
TEL: 620-621-0171 FAX: 620-621-0858



New Campus for  
HEARTSPRING  
WICHITA

HEARTSPRING  
WICHITA

REVISION DATE

PROJECT NO.  
2580.20

DATE  
1 MARCH 1996

SC1