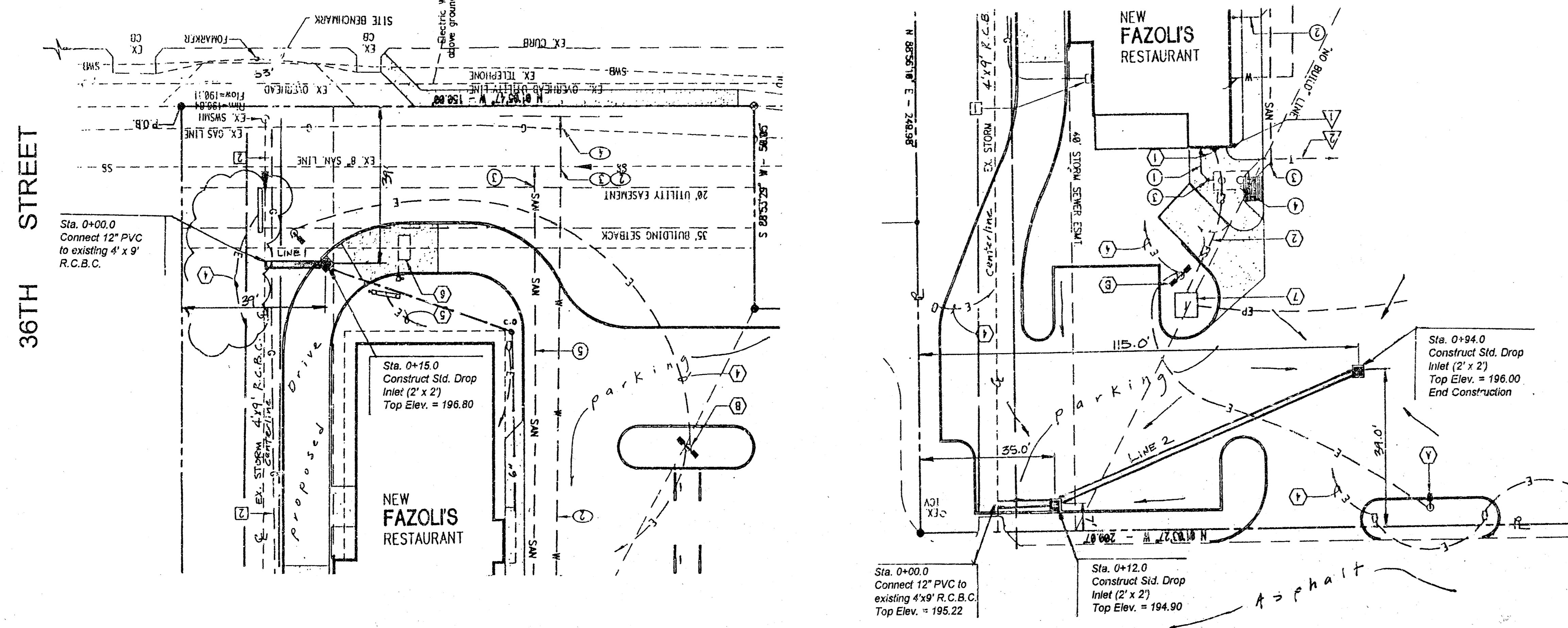


SCALE:  
1"=20' Horizontal  
1"=5' Vertical

ROCK ROAD

General Notes



- Contractor will be required to provide notice to utility companies a minimum of twenty-four (24) hours prior to any excavation, as follows:  
 Kansas One-Call 687-2770  
 The Contractor must notify the following in case of an emergency:  
 Cablevision 262-4270  
 or K.P.L. Gas Service Company 263-2061  
 Kansas Gas & Electric Company 383-8650  
 Arkla Gas Company 942-8350  
 Southwestern Bell Telephone Company 1-571-2611  
 City of Wichita Water Department 268-4908  
 City of Wichita Sewer Maintenance 268-4071
- Underground utility service lines and overhead utility pole lines are to be adjusted as necessary by others prior to construction unless the plans specifically call for their adjustment by the Contractor or unless the plans specifically identify a utility to be adjusted by its owner during construction. Existing utilities and their location, as shown on the plans, represent the best information obtainable for design. Location information has been obtained from the various utility companies and is either from company record drawings or company provided field locations. The Contractor will be required to work around existing utilities within the right-of-way which do not conflict with proposed construction.
- Rubble from the removal of miscellaneous structures and excess excavation which is to be wasted shall be disposed of on sites to be provided by the Contractor. These sites shall be approved by the Engineer as to suitability, appearance and site location. Locations that, in the opinion of the Engineer, will leave an unsightly appearance will not be approved.
- Trees and shrubs in public right-of-way which are in direct conflict with proposed new construction shall be removed by the Contractor with the Engineer's approval. Trees and shrubs which are not in direct conflict with proposed new construction shall be saved and protected from damage.
- The Contractor shall give all property owners and/or tenants of developed property directly abutting the construction of this project a minimum of ten (10) days advance notice prior to start of construction.
- The Contractor shall be responsible for preserving property irons. The Contractor will be required to re-establish any property irons which are damaged or destroyed by his construction operations. Such irons shall be re-established by a licensed land surveyor in accordance with state law.
- The Contractor shall seed all areas disturbed by construction operations as per City of Wichita specifications.

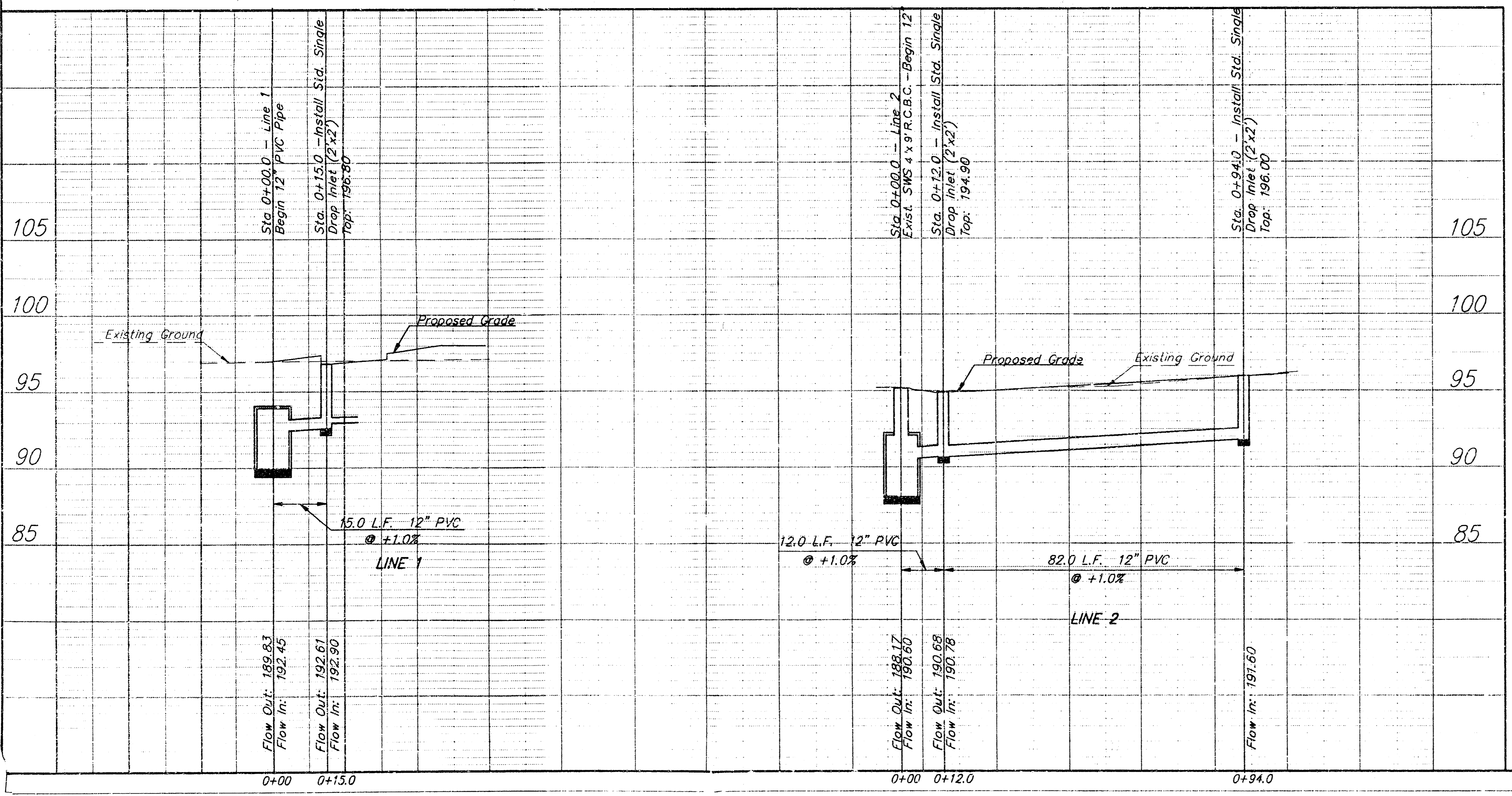
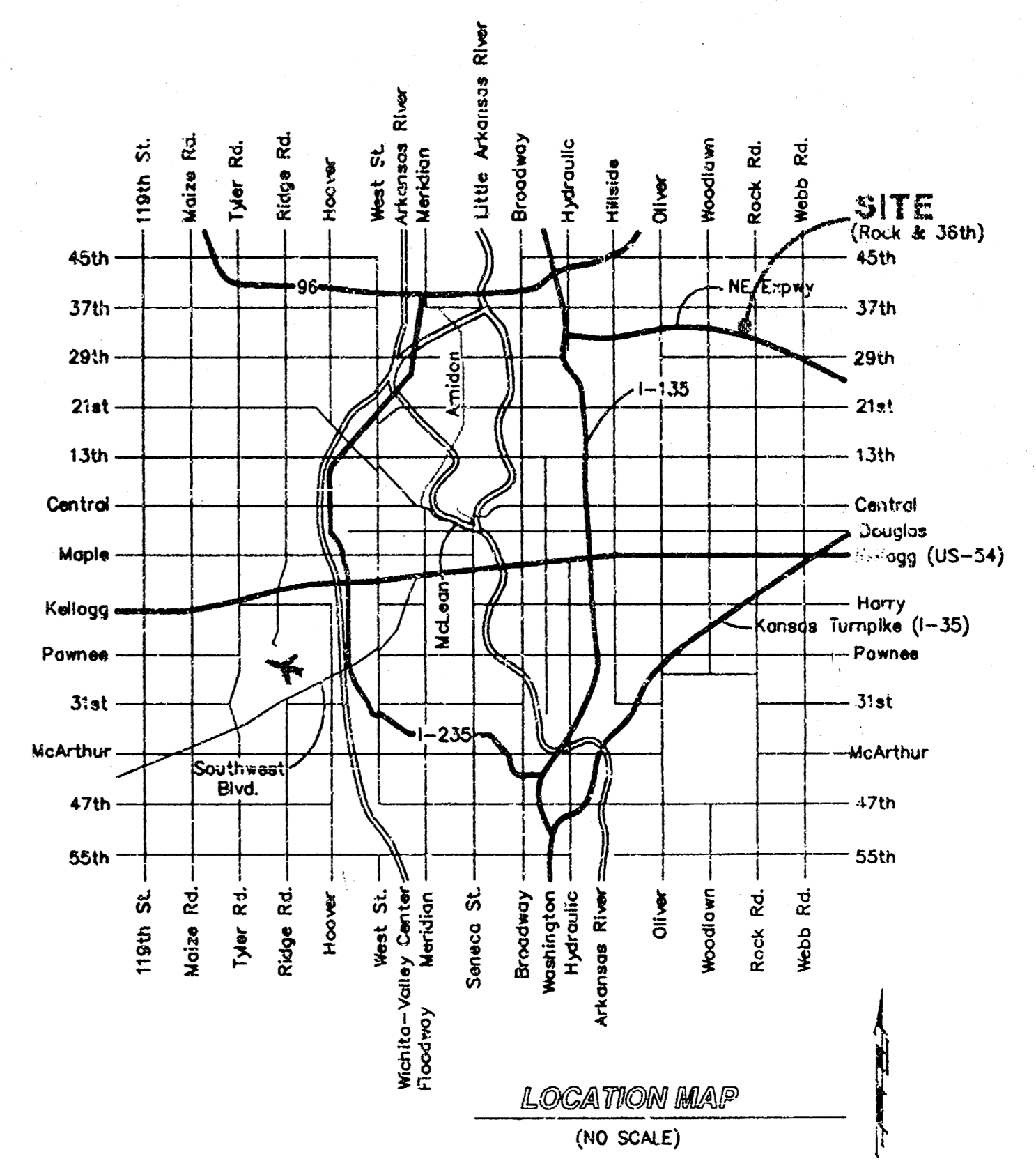
Benchmark:

Datum B.M. - City of Wichita Bench Mark. NW corner concrete field drain. 150' east of the east line of Rock Road 6' south of the centerline of 37th Street North. (Elevation = 203.87)  
 Site B.M. - Chiseled Square cut on top of wall 20' south and 10' east of the NE corner of Lot 6. (Elevation = 197.91)

APPROVED AS NOTED  
BY CITY ENGINEER OF WICHITA

Sanitary Sewers \_\_\_\_\_  
 Storm Sewers VRH 5/16/96  
 Driveway Approaches \_\_\_\_\_  
 Water Mains \_\_\_\_\_  
 Paving \_\_\_\_\_

NOTE TO CONTRACTORS  
 Inspection and testing for this project is to be provided by a Licensed Consulting Engineering Firm under contract with the Owner/Developer. Said inspection to be in accordance with the City of Wichita standard construction engineering practices and certified by a Licensed Professional Engineer. No work shall be performed in dedicated easements or public right-of-way by the Contractor without such inspection nor shall any work be commenced without written authorization by the City Engineer. All Construction and Materials shall comply with the City of Wichita Specifications and Standards (as file and available in the City Engineer's Office).



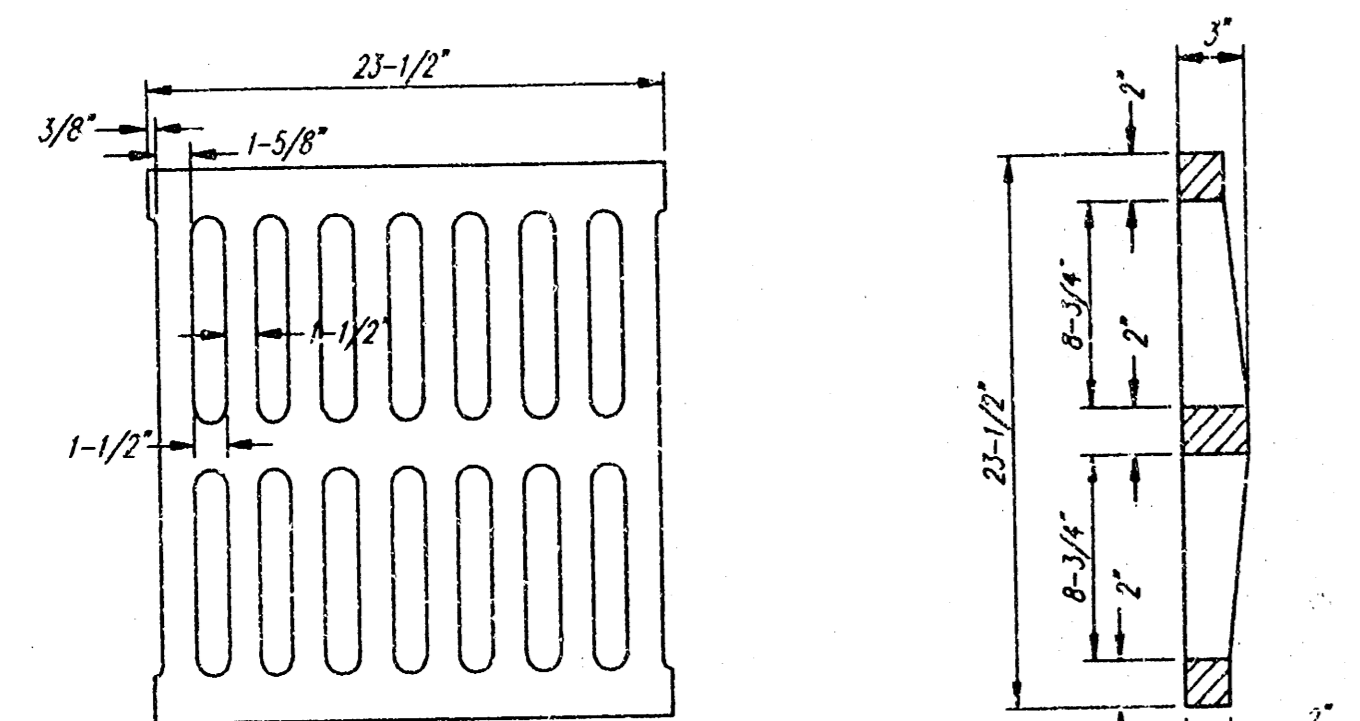
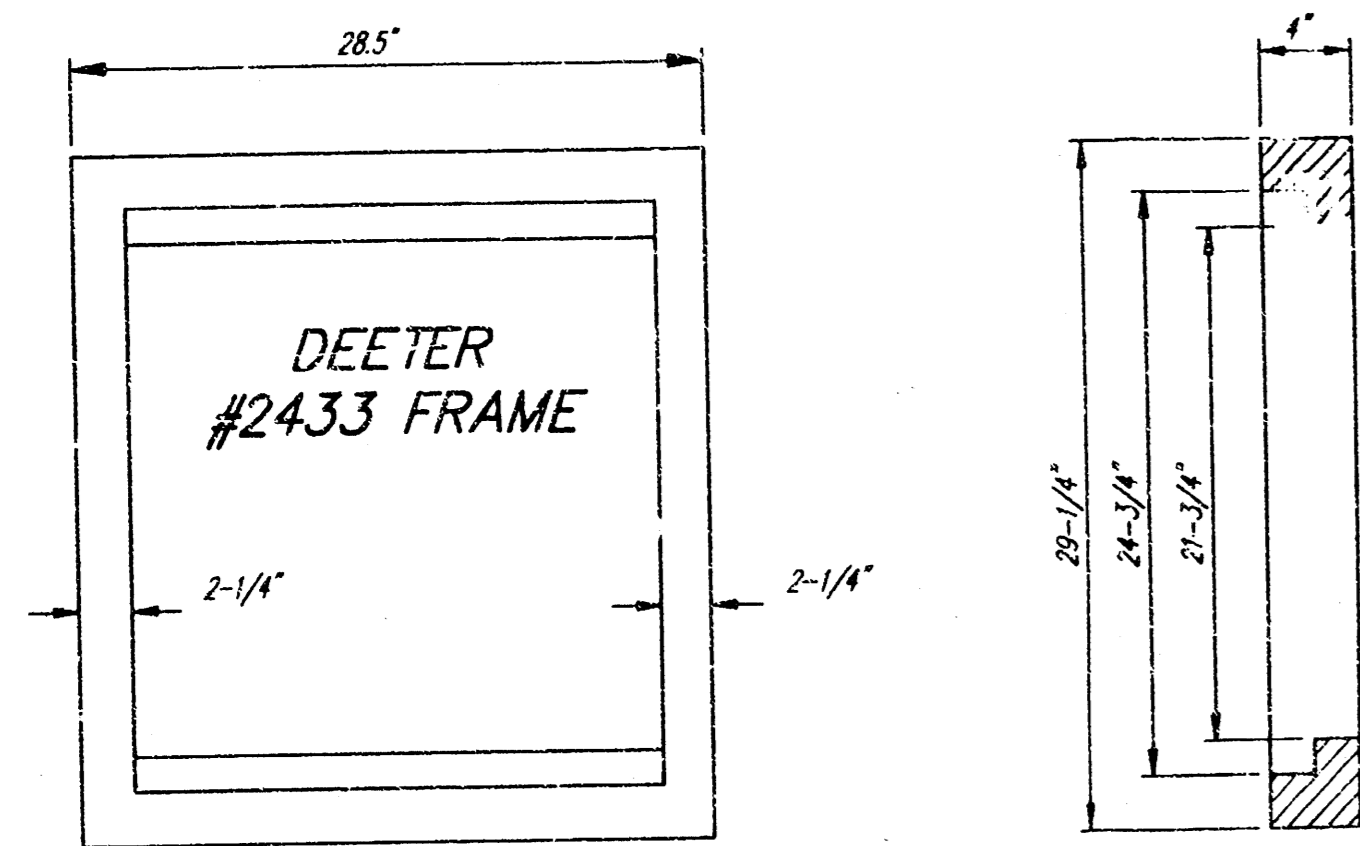
Storm Water Sewer Improvements  
**Fazoli's Restaurant**  
 Wichita, Kansas

**BAUGHMAN COMPANY P. A.**  
 ENGINEERING, SURVEYING, & PLANNING  
 316-262-7271 • 315 ELLIS • WICHITA, KANSAS 67211

PROJECT NUMBER: **625PPS (607861)**

DESIGN: NBW DRAWN: JLL APPROVED: NBW DATE: MAY 1996 SCALE: NOTED

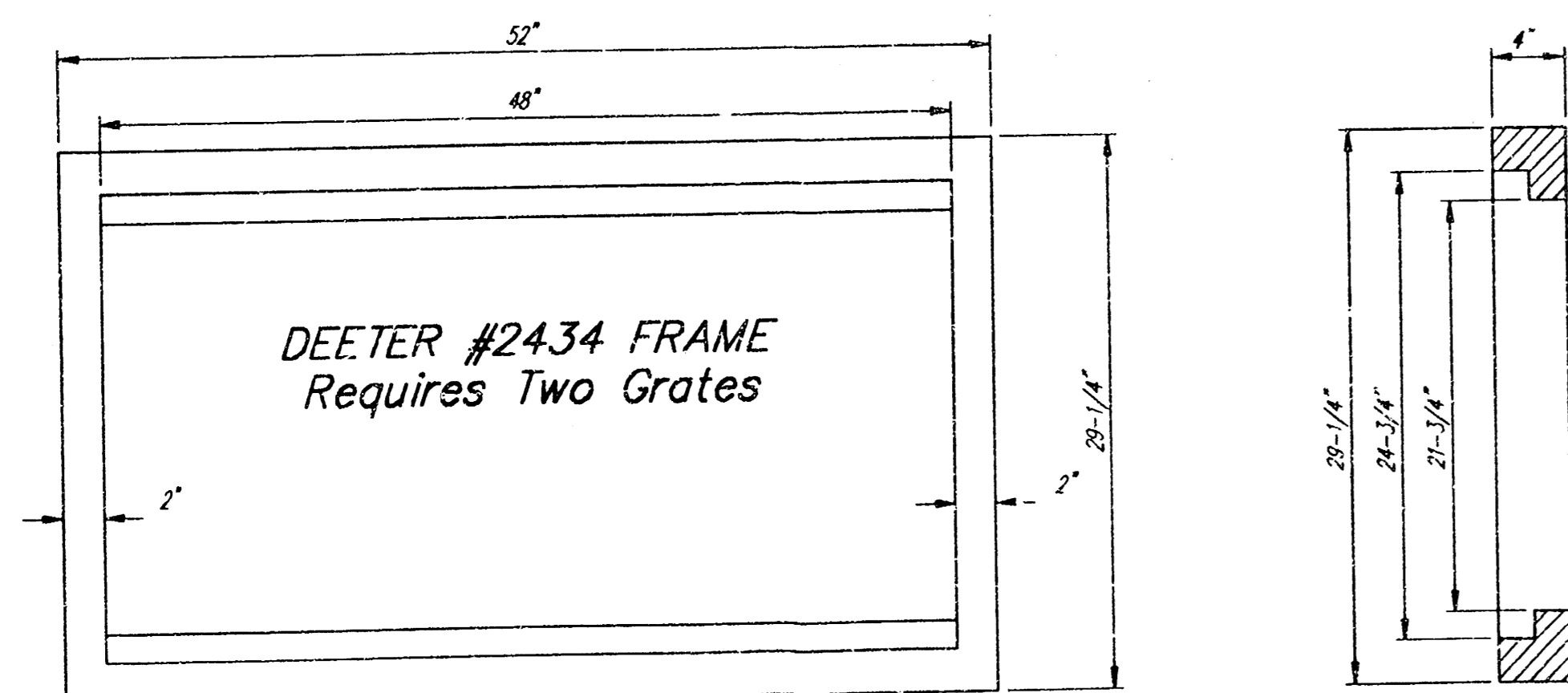
SHEET **1** OF **2**



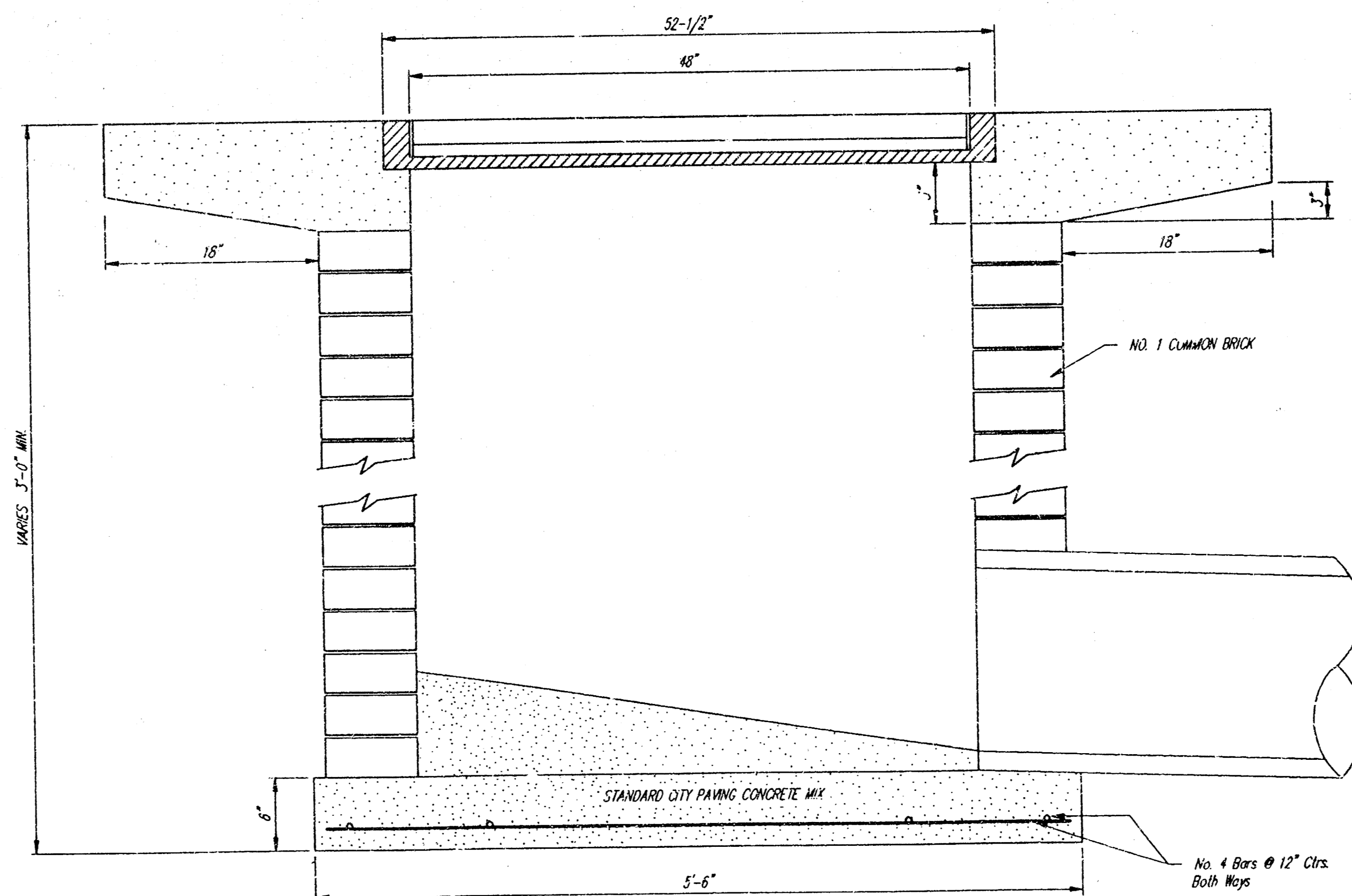
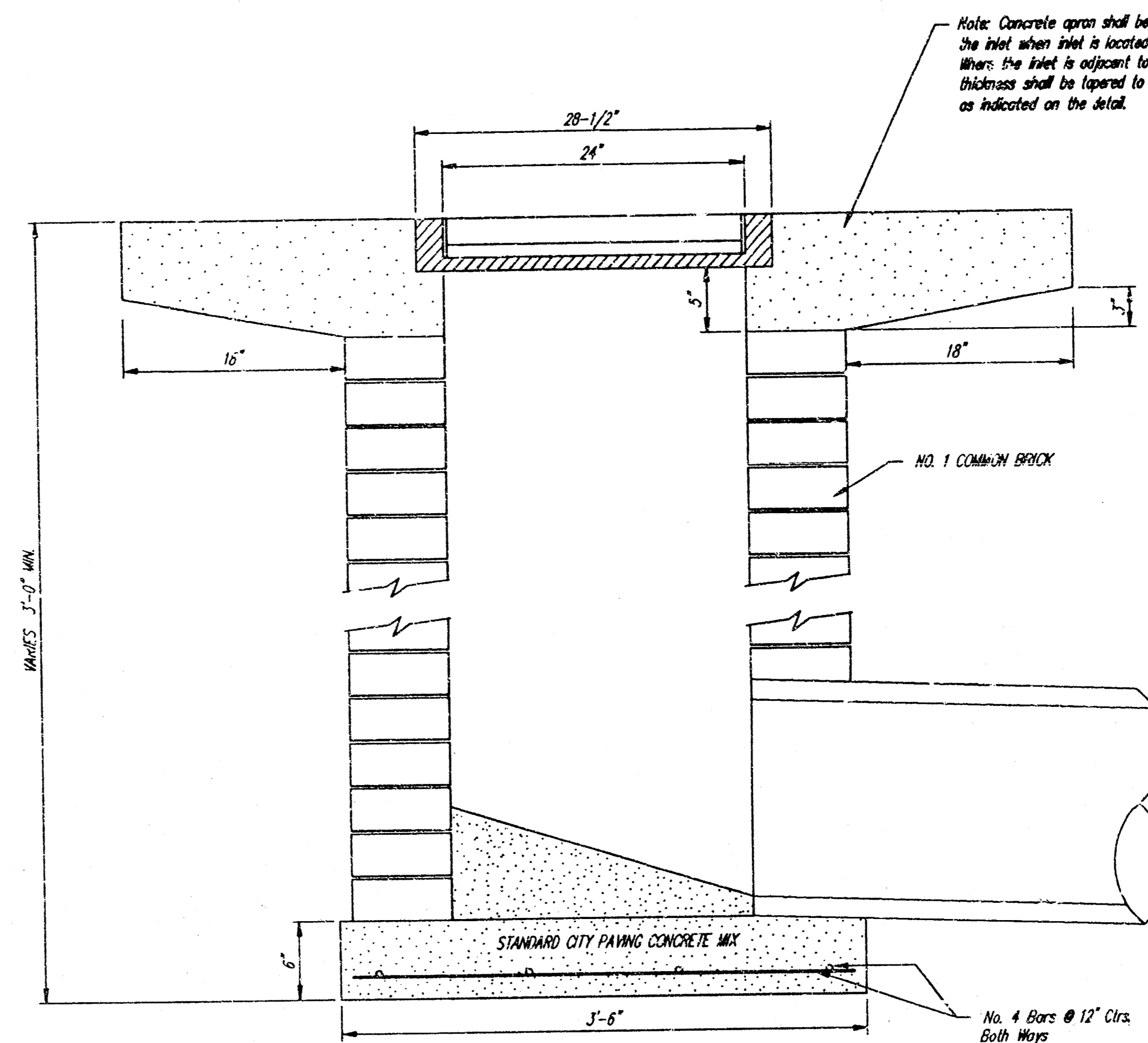
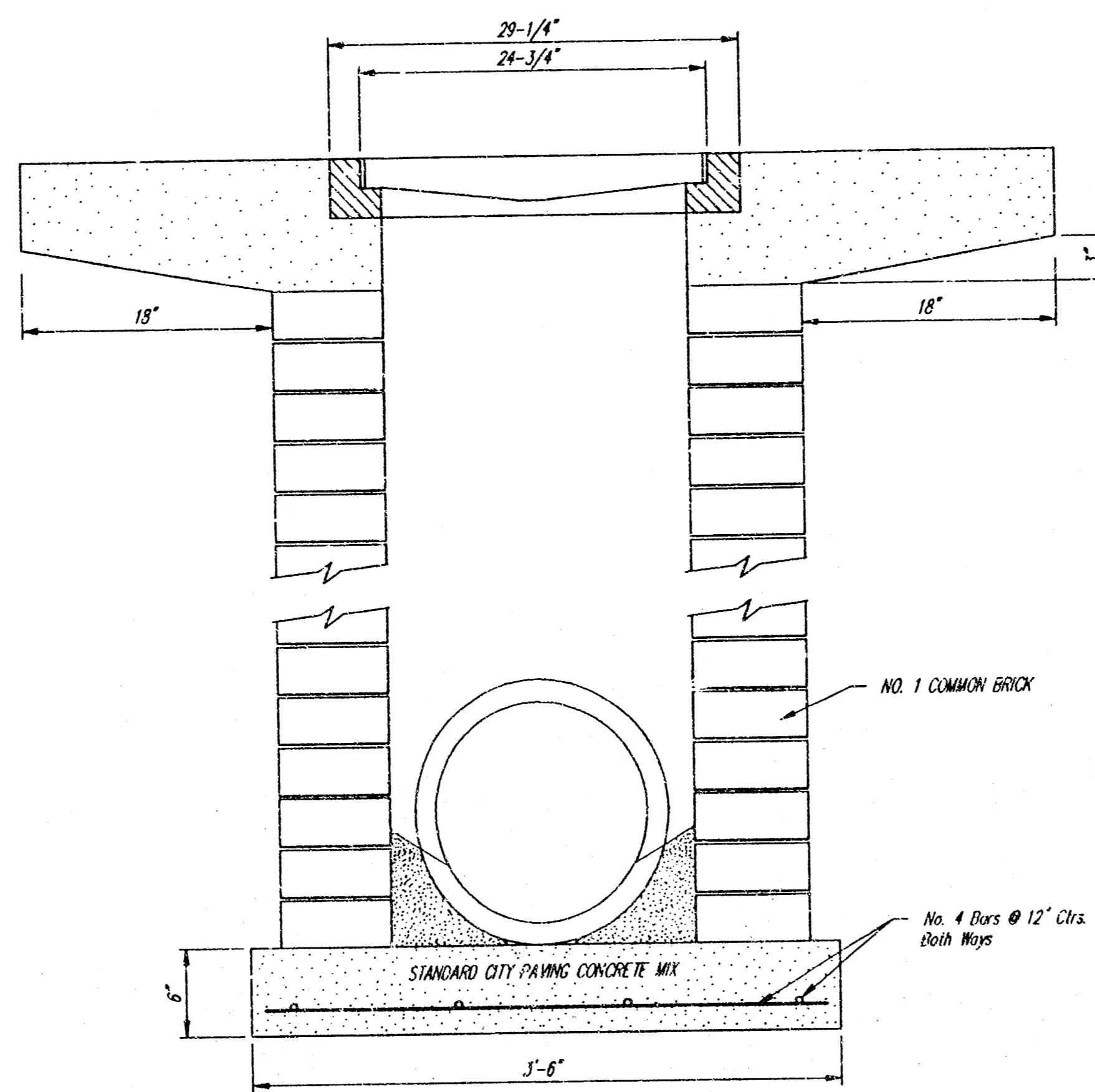
DEETER #2433 GRATE

24" x 24" Frame and Grate Detail

NOTE: Grates shall be imprinted on the top surface with "CITY OF WICHITA" using letters of least 1" in height. Other marking methods may be approved by the engineer.



Double 24" x 24" Frame Detail



City of Wichita Standard					
<b>Drop Inlet</b>					
Fazzoli's Restaurant					
BAUGHMAN COMPANY P. A.					
ENGINEERING, SURVEYING, & PLANNING					
316-282-7271 • 313 ELLIS • WICHITA, KANSAS 67211					
PROJECT NUMBER					
625PPS (607861)					
DESIGN	DRAWN	APPROVED	DATE	SCALE	SHEET
			May 1996		2
					OF
					2