

STORM WATER SEWER INLET MODIFICATIONS

TO SERVE

LOT 1, RIVERVIEW ESTATES

TO WICHITA, SEDGWICK COUNTY, KANSAS

CITY OF WICHITA, KANSAS

M.E. LINDEBAK

CITY ENGINEER

PRIVATE PROJECT NO. 658PPS

INDEX NO. 607861

September 1996

APPROVED AS NOTED
BY CITY ENGINEER OF WICHITA

Sanitary Sewers _____
Storm Sewers URH 9/23/96
Driveway Approaches _____
Water Mains _____
Paving _____

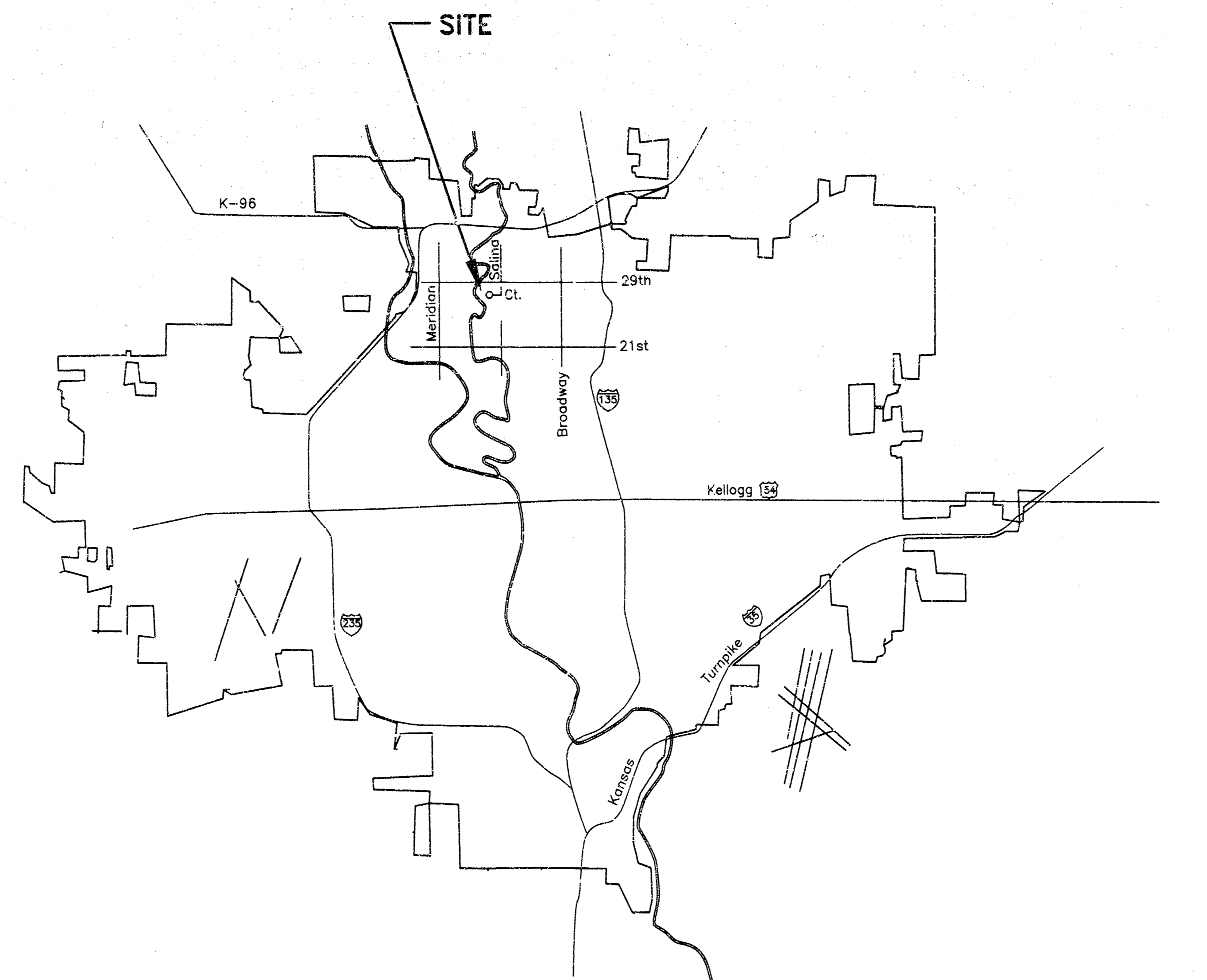
NOTE TO CONTRACTOR

INSPECTION AND TESTING FOR THIS PROJECT IS TO BE PROVIDED BY A LICENSED CONSULTING ENGINEERING FIRM UNDER CONTRACT WITH THE OWNER/DEVELOPER. SAID INSPECTION IS TO BE IN ACCORDANCE WITH THE CITY OF WICHITA STANDARD CONSTRUCTION ENGINEERING PRACTICES AND CERTIFIED BY A LICENSED PROFESSIONAL ENGINEER. NO WORK SHALL BE PERFORMED IN DEDICATED EASEMENTS OR THE PUBLIC RIGHT-OF-WAY BY THE CONTRACTOR WITHOUT SUCH INSPECTION NOR SHALL ANY WORK BE COMPLETED IN DEDICATED EASEMENTS OR PUBLIC RIGHT-OF-WAY WITHOUT WRITTEN AUTHORIZATION BY THE CITY ENGINEER.

NOTES

- THE CONTRACTOR WILL BE REQUIRED TO PROVIDE ADVANCE NOTICE OF TWENTY-FOUR (24) HOURS TO UTILITY COMPANIES PRIOR TO STARTING ANY EXCAVATION AS FOLLOWS:
KANSAS ONE-CALL 687-2470
THE CONTRACTOR MUST NOTIFY THE FOLLOWING IN CASE OF EMERGENCY:

CABLEVISION	262-4270 OR 263-2061
KANSAS GAS & ELECTRIC (GAS)	263-7511
KANSAS GAS & ELECTRIC (ELECTRIC)	264-1141
ARKLA GAS COMPANY	942-8350 OR 263-8161
SOUTHWESTERN BELL TELEPHONE	1-571-2611
CITY OF WICHITA WATER DEPT.	268-4908
CITY OF WICHITA SEWER MAINTENANCE	268-4071
- INTERURBAN TRAFFIC GENERATED OUTSIDE THE PROJECT AREA IS NOT TO BE CARRIED THROUGH CONSTRUCTION.
- EXISTING UTILITIES AND THEIR LOCATION, AS SHOWN ON THE PLANS, REPRESENT THE BEST INFORMATION OBTAINABLE FOR DESIGN. LOCATION INFORMATION HAS BEEN OBTAINED FROM THE VARIOUS UTILITY COMPANIES AND IS EITHER FROM COMPANY RECORD DRAWINGS OR COMPANY PROVIDED FIELD LOCATIONS. THE CONTRACTOR WILL BE REQUIRED TO WORK AROUND EXISTING UTILITIES WITHIN THE RIGHT-OF-WAY WHICH DO NOT CONFLICT WITH PROPOSED CONSTRUCTION.
- RUBBLE FROM THE REMOVAL OF MISCELLANEOUS STRUCTURES AND EXCESS EXCAVATION WHICH IS TO BE WASTED SHALL BE DISPOSED OF ON SITES TO BE PROVIDED BY THE CONTRACTOR. THESE SITES SHALL BE APPROVED BY THE ENGINEER AS TO SUITABILITY, APPEARANCE AND SITE LOCATION. LOCATIONS THAT, IN THE OPINION OF THE ENGINEER, WILL LEAVE AN UNSIGHTLY APPEARANCE WILL NOT BE APPROVED.
- THE CONTRACTOR SHALL NOTIFY PIPELINE COMPANIES AT LEAST 24 HOURS IN ADVANCE OF ANY WORK BEING PERFORMED ACROSS AND/OR ADJACENT TO PIPELINES.
- TREES & SHRUBS IN PUBLIC RIGHT-OF-WAY WHICH ARE IN DIRECT CONFLICT WITH PROPOSED NEW CONSTRUCTION SHALL BE REMOVED BY THE CONTRACTOR WITH THE ENGINEER'S APPROVAL. TREES & SHRUBS WHICH ARE NOT IN CONFLICT WITH PROPOSED NEW CONSTRUCTION SHALL BE SAVED AND PROTECTED FROM DAMAGE.
- CONTRACTOR SHALL GIVE THE OWNER OF PROPERTY ABUTTING THIS PROJECT, WHOSE YARDS WILL BE LOWER THAN THE NEW FINISHED GRADE ELEVATIONS AT THE RIGHT-OF-WAY LINE, AN OPPORTUNITY TO UTILIZE EXCESS EXCAVATED MATERIAL FROM THE PROJECT TO REGRADE THOSE YARD TO DRAIN TO THE NEW PAVEMENT. CONTRACTOR WILL BE REQUIRED TO DUMP AND SPREAD THE EXCESS MATERIAL AS REQUIRED BY THE SPECIFICATIONS WHEN REQUESTED BY THE PROPERTY OWNER. THE CONTRACTOR SHALL BE FURNISHED A WRITTEN REQUEST FROM THE PROPERTY OWNER BEFORE ANY SUCH EXCESS MATERIAL IS DELIVERED TO SUCH PROPERTIES.
- ALL DISTURBED AREAS TO BE RESTORED PER AR-78.



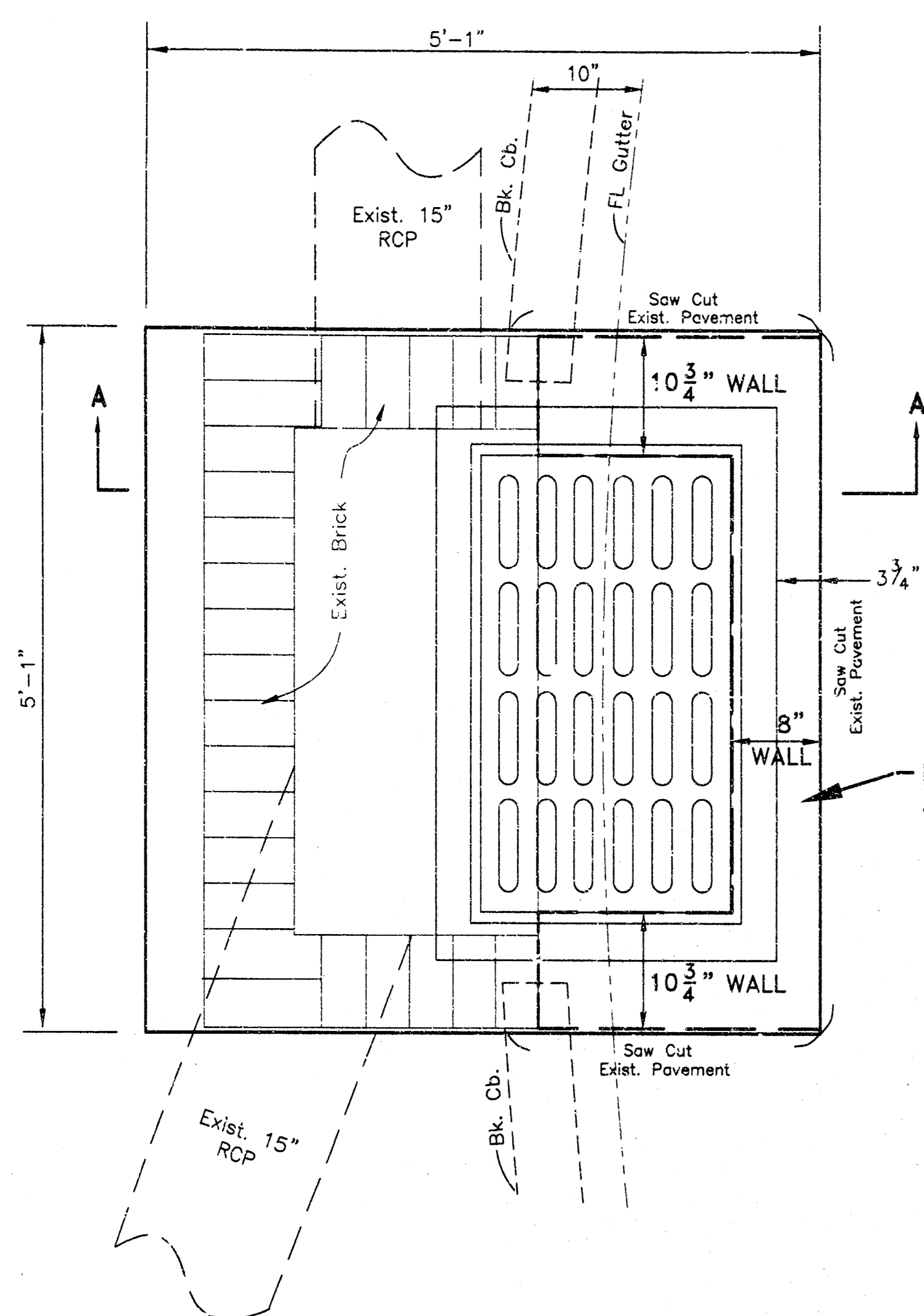
BENCHMARK

CITY DISC - 44' N. & 32' E. OF THE
CENTERLINES OF HOOD ST. & 29TH ST. N.
ELEV. = 1313.31 M.S.L.

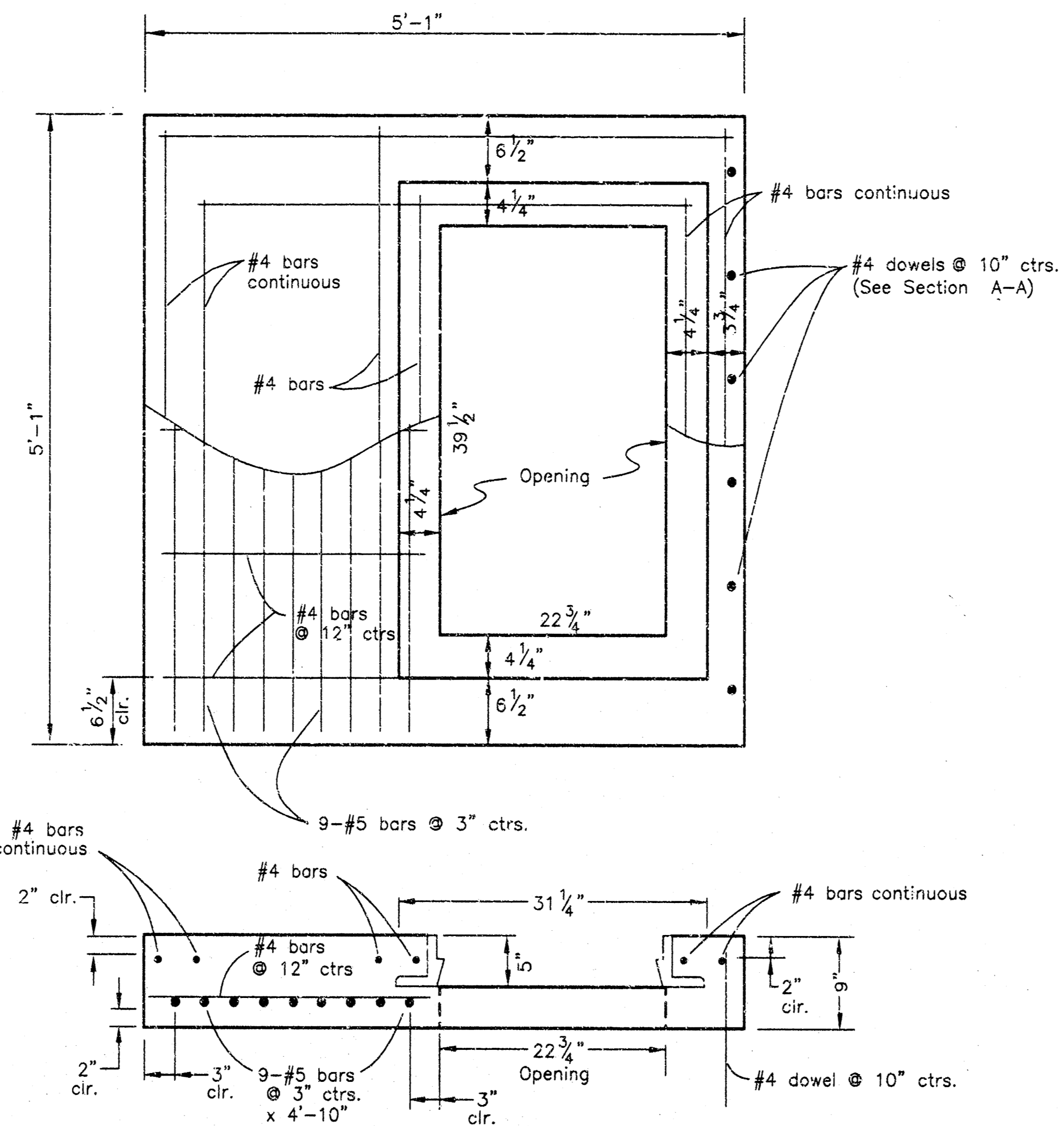


MOHRING & ASSOCIATES
CONSULTING ENGINEERS
WICHITA

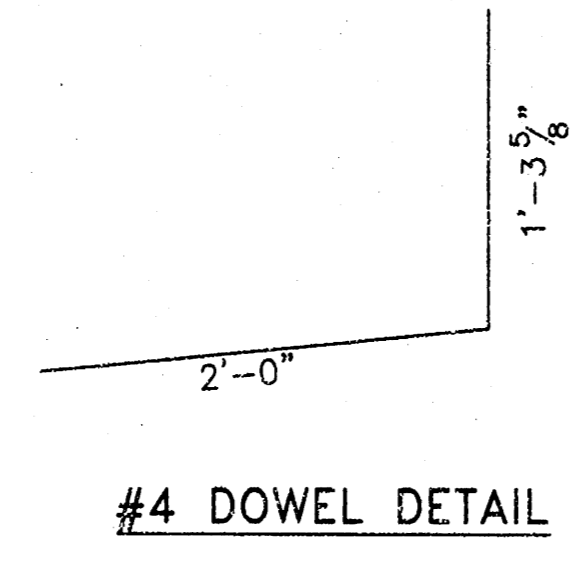
Date Filled: Diversey
Printed: 9/23/96



PLAN
1" = 1'



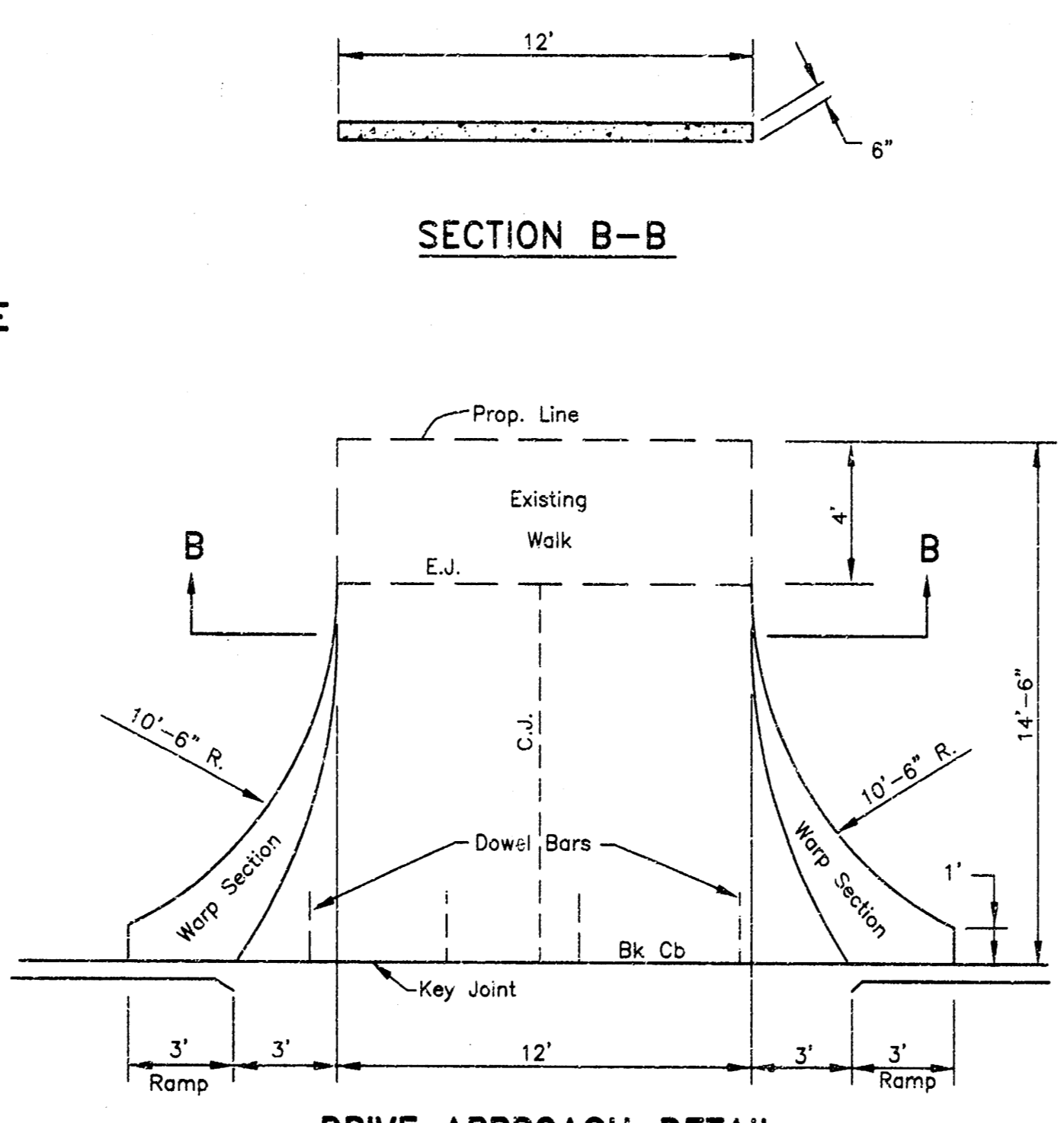
SLAB REINFORCEMENT
1" = 1'



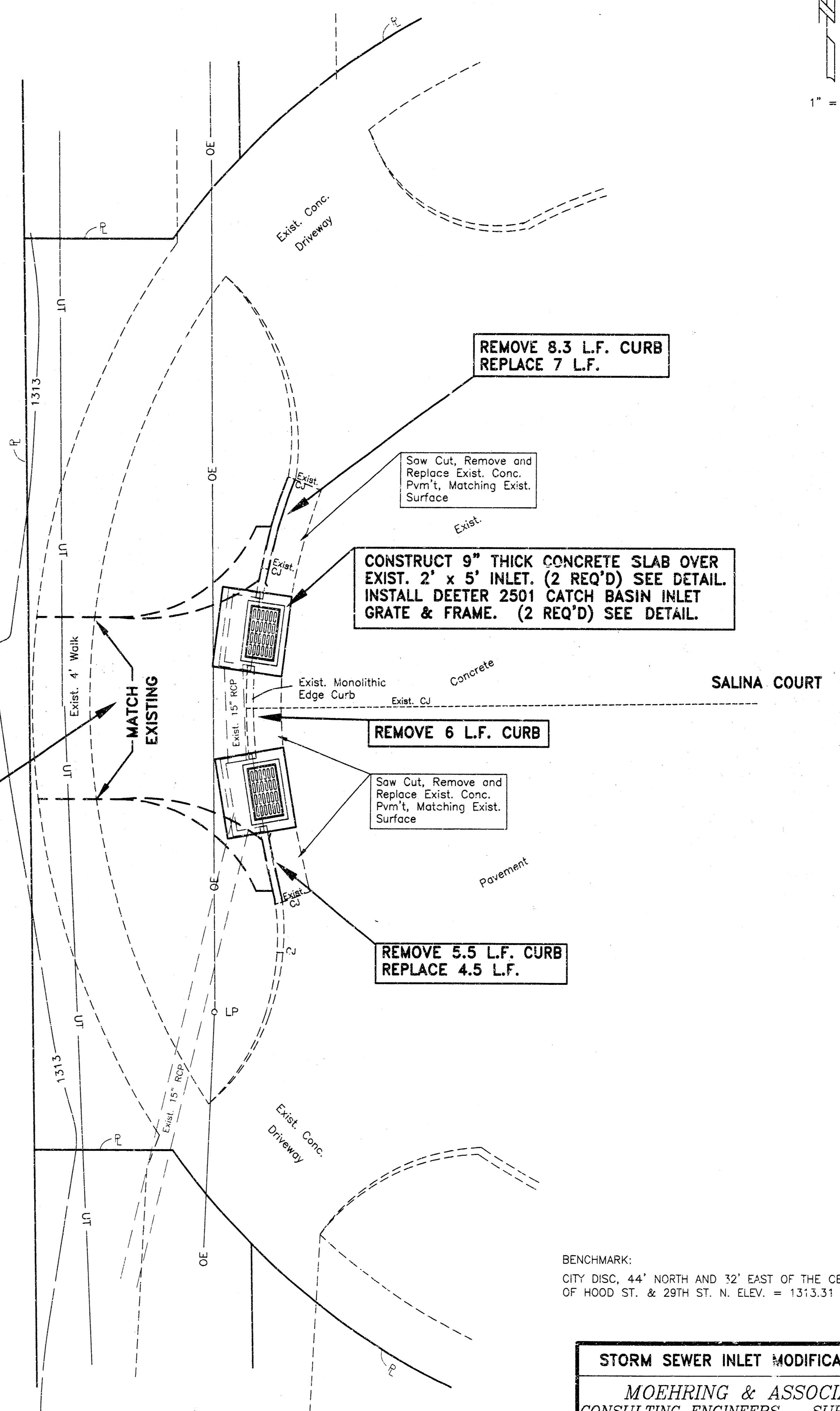
#4 DOWEL DETAIL



SECTION A-A
1" = 1'



DRIVE APPROACH DETAIL
1" = 5'



BENCHMARK:
CITY DISC. 44' NORTH AND 32' EAST OF THE CENTERLINES
OF HOOD ST. & 29TH ST. N. ELEV. = 1313.31 M.S.L.

STORM SEWER INLET MODIFICATIONS	
MOEHRING & ASSOCIATES CONSULTING ENGINEERS - SURVEYORS	
433 S. HYDRAULIC WICHITA, KS. (316) 263-8291	
PRIVATE PROJECT NO. 658PPS	DATE: SEPTEMBER 1996
SHEET 2 OF 2	

14-5-414

DAVE FISHER, DRIVE & SWS
Project: 9/23/96