

STORMWATER DRAIN IMPROVEMENTS

to serve

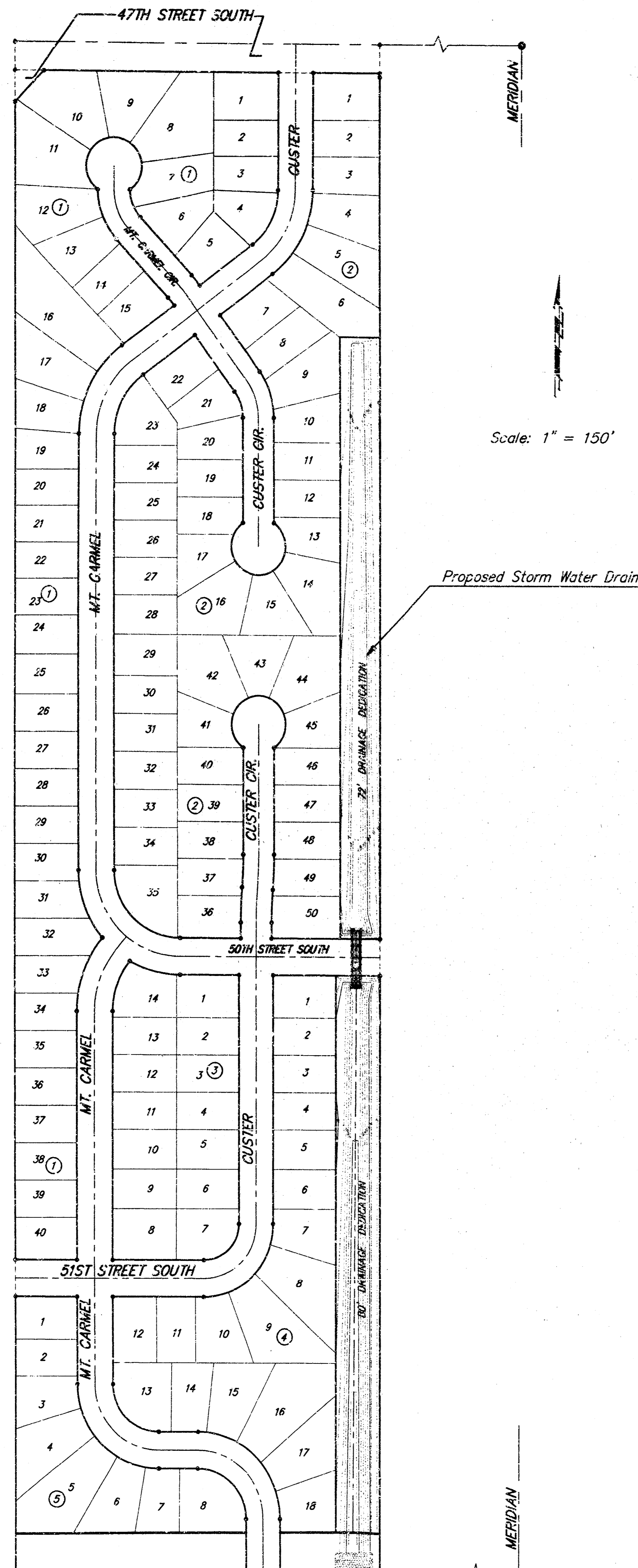
Stonebriar Addition

CITY OF WICHITA, KANSAS

Michael E. Lindebak, P.E. City Engineer

Private Project Number

669 PPS (607861)



Scale: 1" = 150'

Proposed Storm Water Drain

Benchmarks

Railroad Spike in Power Pole
Located 27' South and 402' East
of the Northwest Corner of the
NE 1/4, Section 24, TWP. 28-S,
R-1-W.

Elevation = 92.98 City Datum

City of Wichita Disc Located
44' North and 30' East of the
Centerlines of 47th Street South
and Meridian.

Elevation = 91.78 City Datum

APPROVED AS NOTED
BY CITY ENGINEER OF WICHITA

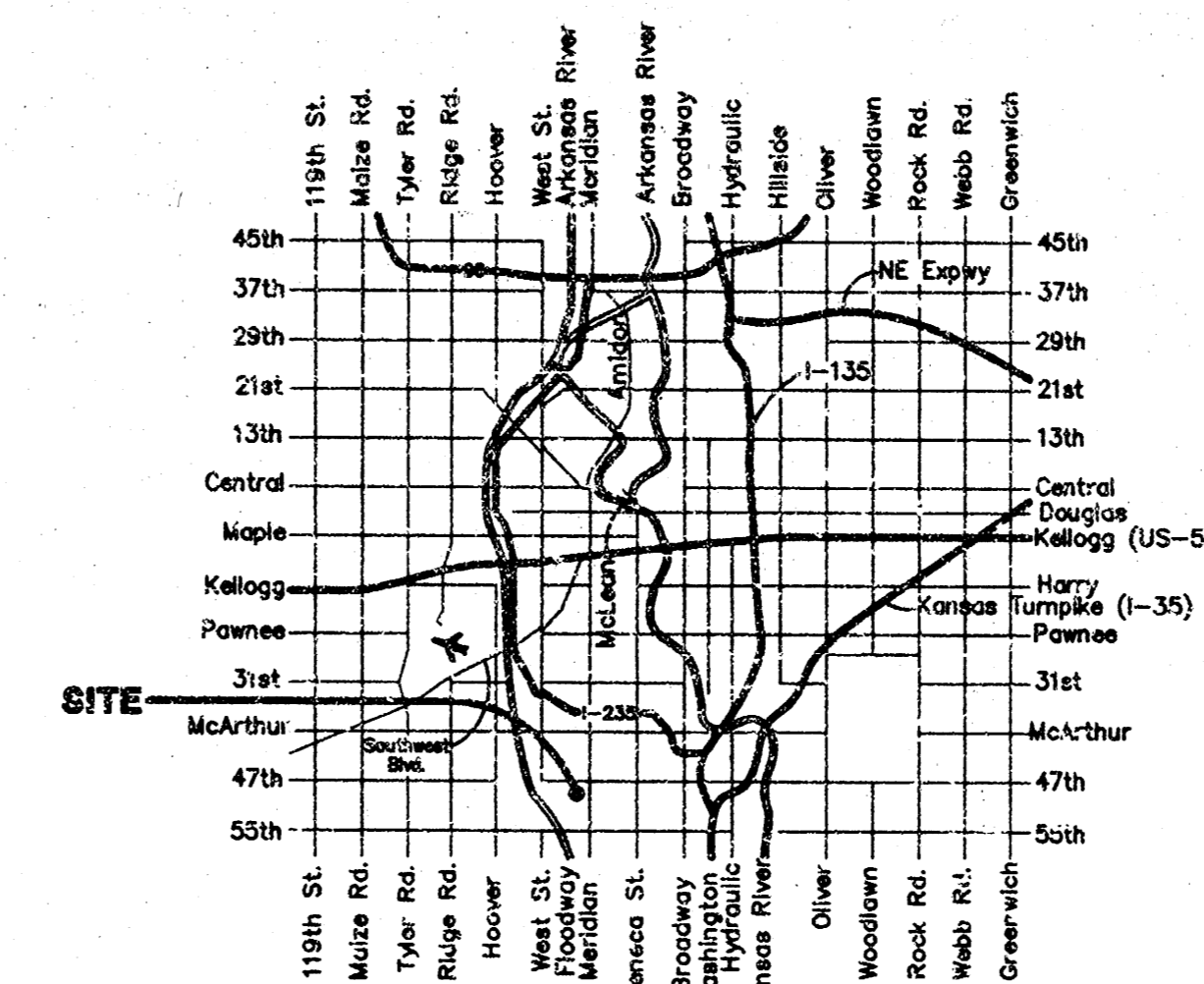
Sanitary Sewers _____
Storm Sewers VRH 11/25/96
Driveway Approaches _____
Water Mains _____
Paving _____

NOTE TO CONTRACTORS

Inspection and testing for this project is to be provided by a Licensed Consulting Engineering Firm under contract with the Owner/Developer. Said inspection to be in accordance with the City of Wichita standard construction engineering practices and certified by a Licensed Professional Engineer. No work shall be performed in dedicated easements or public right-of-way by the Contractor without such inspection nor shall any work be commenced without written authorization by the City Engineer. All Construction and Materials shall comply with the City of Wichita Specifications and Standards (on file and available in the City Engineer's Office).

Sheet Index

Title Sheet	1
Plan/Profile	2-4
Copy of Plat	5



Vicinity Map

GENERAL NOTES:

1. Contractor will be required to provide notice to utility companies a minimum of twenty-four (24) hours prior to any excavation, as follows:

Kansas One-Call 687-2470

The Contractor must notify the following in case of an emergency:

Cablevision	262-4270
or	263-2061
K.P.L. Gas Service Company	383-2650
Kansas Gas & Electric Company	383-8600
Peoplas Nat. Gas Company	942-8350
Southwestern Bell Telephone Company	1-571-2611
City of Wichita Water Department	268-4908
City of Wichita Sewer Maintenance	268-4071

2. Utility service lines, poles, valve boxes, meters, and etcetera are to be adjusted as necessary by others prior to construction unless the plans specifically call for their adjustment by the Contractor or unless the plans specifically identify a utility to be adjusted by its owner during construction. Existing utilities and their location, as shown on the plans, represent the best information obtainable for design. The contractor will be required to work around existing utilities within the right-of-way which do not conflict with proposed construction.

3. Rubble from the removal of miscellaneous structures and excess excavation which is to be wasted shall be disposed of on sites to be provided by the Contractor. These sites shall be approved by the Engineer as to suitability, appearance and site location. Locations that, in the opinion of the Engineer, will leave an unsightly appearance will not be approved. All disposal sites must be approved by the Kansas Department of Health and Environment. Material either stockpiled or disposed of in a flood plain would a Kansas State Board of Agriculture permit. Any material dumped in waters of the United States or wetlands is subject to U.S. Corps. of Engineers permitting regulations. Any material buried or stockpiled beyond approved construction limits would require additional archaeological investigations unless buried in a previously approved borrow location.

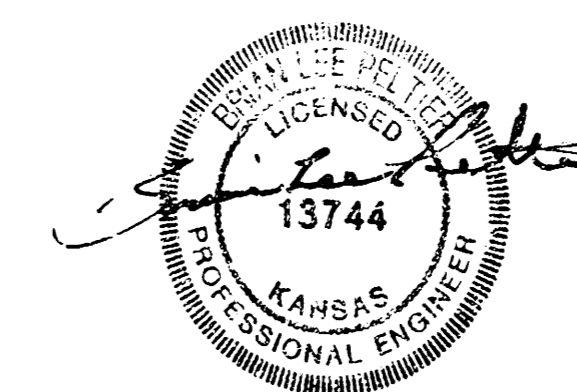
4. Trees and shrubs in public right-of-way which are in direct conflict with proposed new construction shall be removed by the Contractor with the Engineer's approval. Trees and shrubs which are not in direct conflict with proposed new construction shall be saved and protected from damage.

5. The Contractor shall be responsible for preserving property irons. The Contractor will be required to re-establish any property irons which are damaged or destroyed by his construction operations. Such irons shall be re-established by a licensed land surveyor in accordance with state law.

6. All disturbed areas are to be seeded and mulched as follows:

SEED - Kansas Premium Fescue Blend - 8#/1000 Sq. Ft.
(Equal Parts of Olympic II, Bonanza, Apache, and Monarch Fescue Varieties)

MULCH - 2 Tons of Prairie Hay/Acre



Project Area

Benchmark:

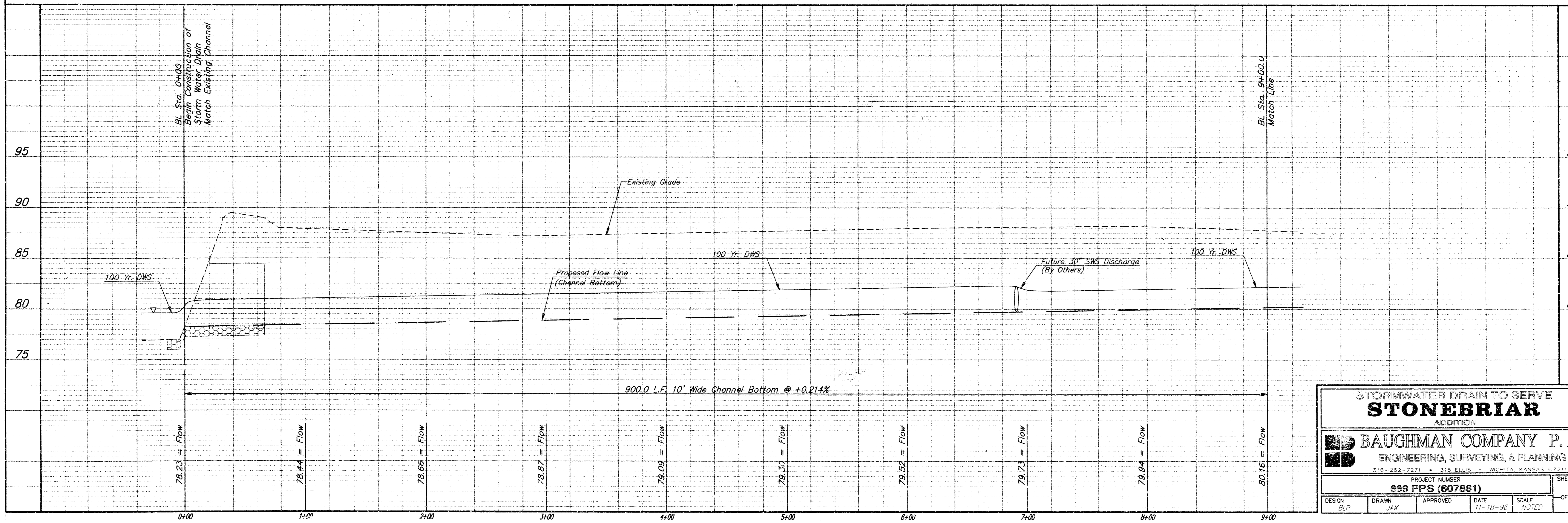
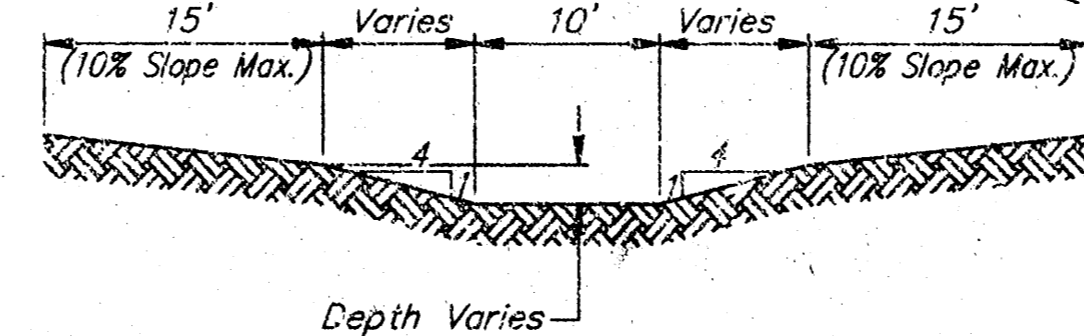
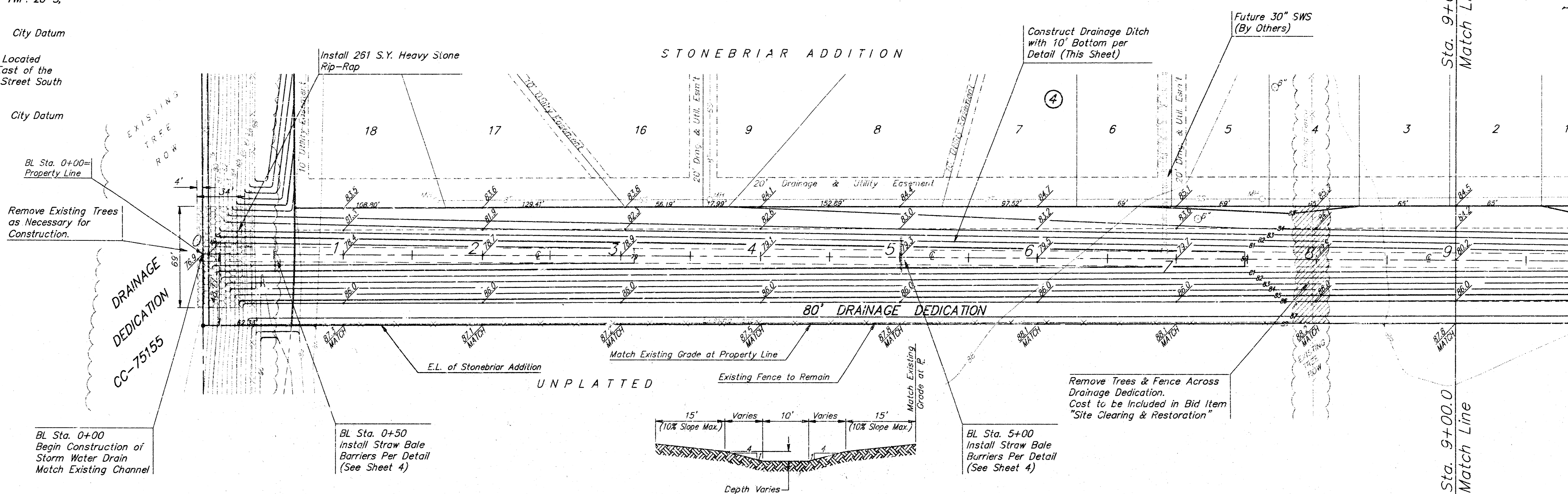
Railroad Spike in Power Pole
Located 27' South and 402' East
of the Northwest Corner of the
NE 1/4, Section 24, TWP. 28-S,
R-1-W.

Elevation = 92.98 City Datum

City of Wichita Disc Located
44' North and 30' East of the
Centerlines of 47th Street South
and Meridian.

Elevation = 91.78 City Datum

SCALE:
1" = 40' HORIZONTAL
1" = 5' VERTICAL
• = IRON



STORMWATER DRAIN TO SERVE
STONEBRIAR
ADDITION

BAUGHMAN COMPANY P. A.
ENGINEERING, SURVEYING, & PLANNING
316-262-7371 • 315 ELLIS • WICHITA, KANSAS 67211

PROJECT NUMBER
688 PFS (607881)

DESIGN: BLP DRAWN: JAK APPROVED: [Signature] DATE: 11-18-98 SCALE: AS NOTED

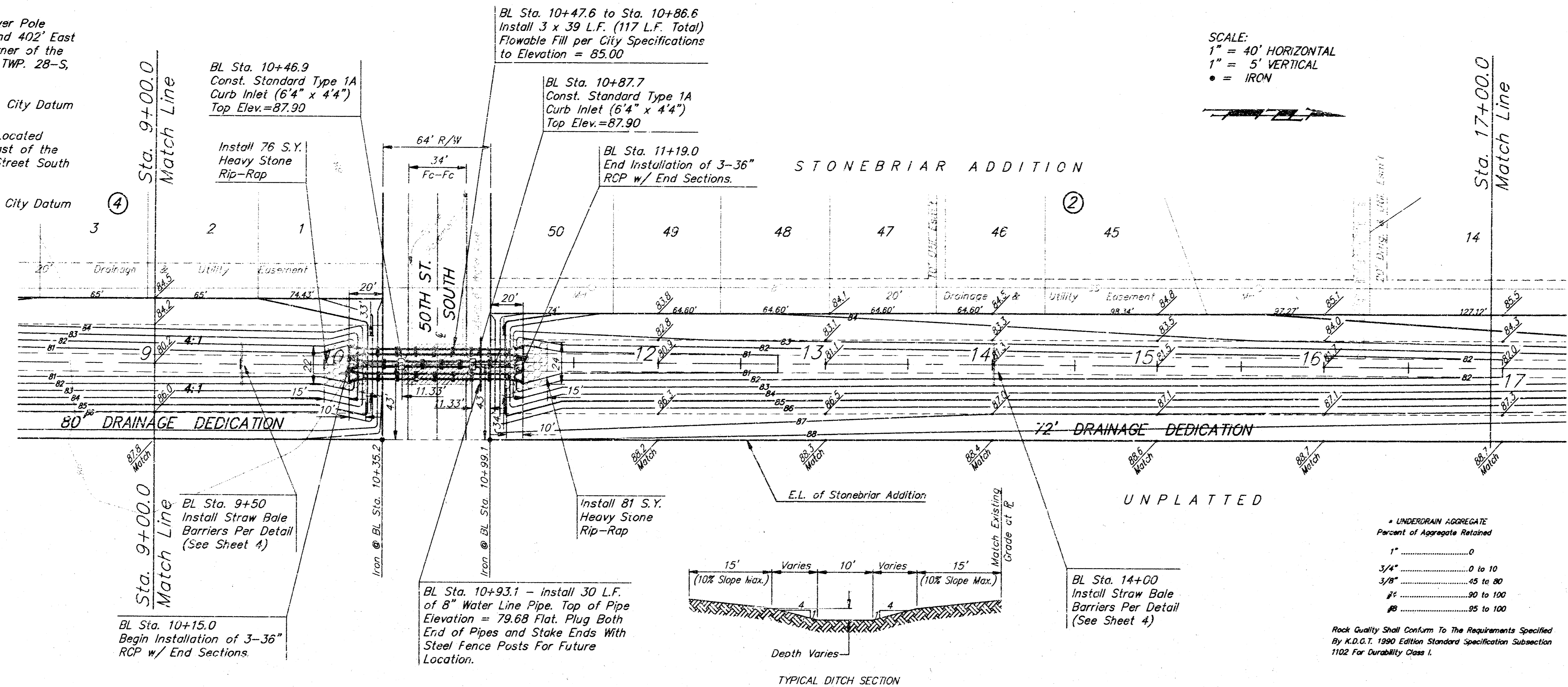
SHEET
2
OF
5

Benchmark:
 Railroad Spike in Power Pole
 Located 27' South and 402' East
 of the Northwest Corner of the
 NE 1/4, Section 24, TWP. 28-S,
 R-1-W.

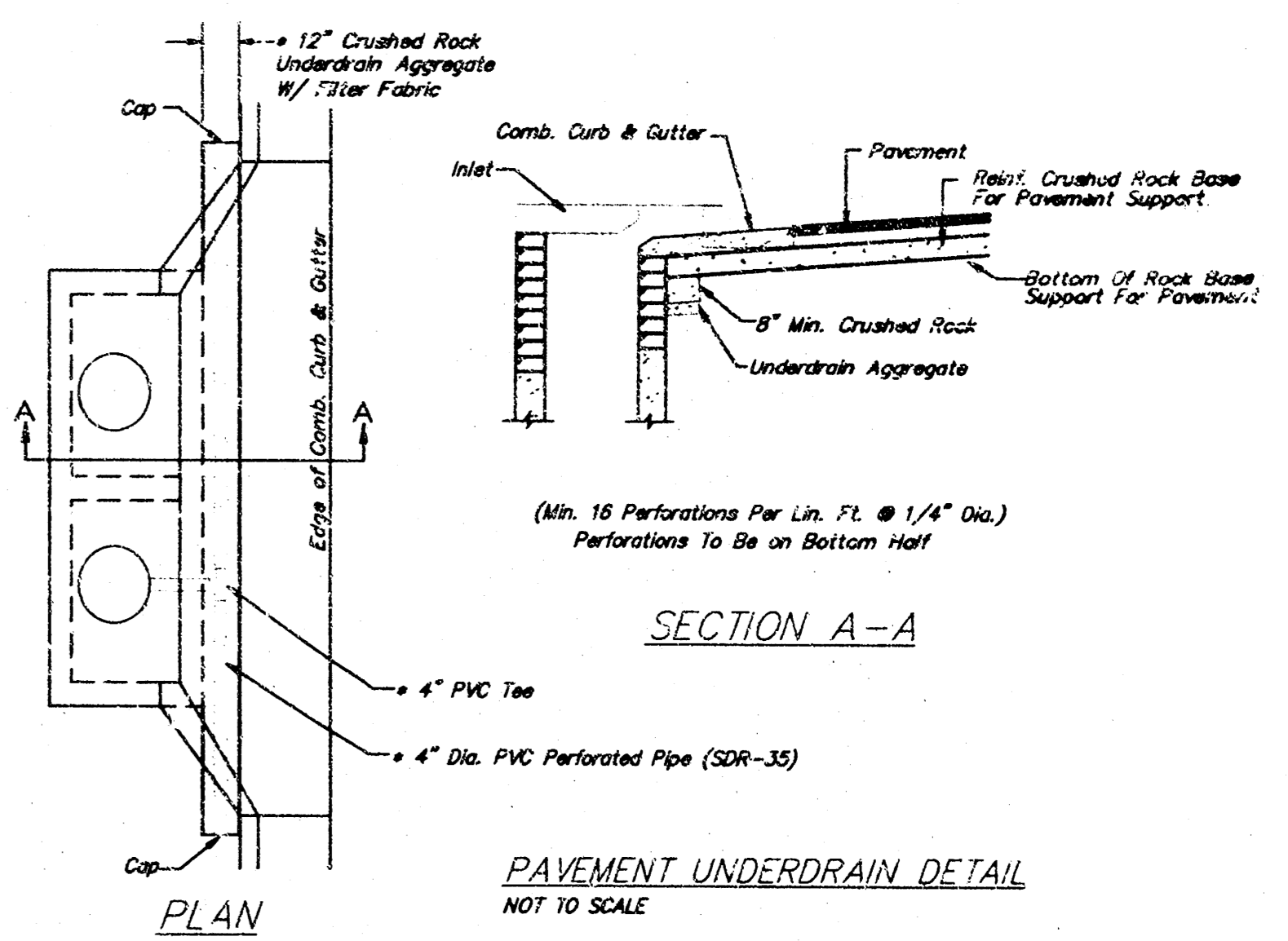
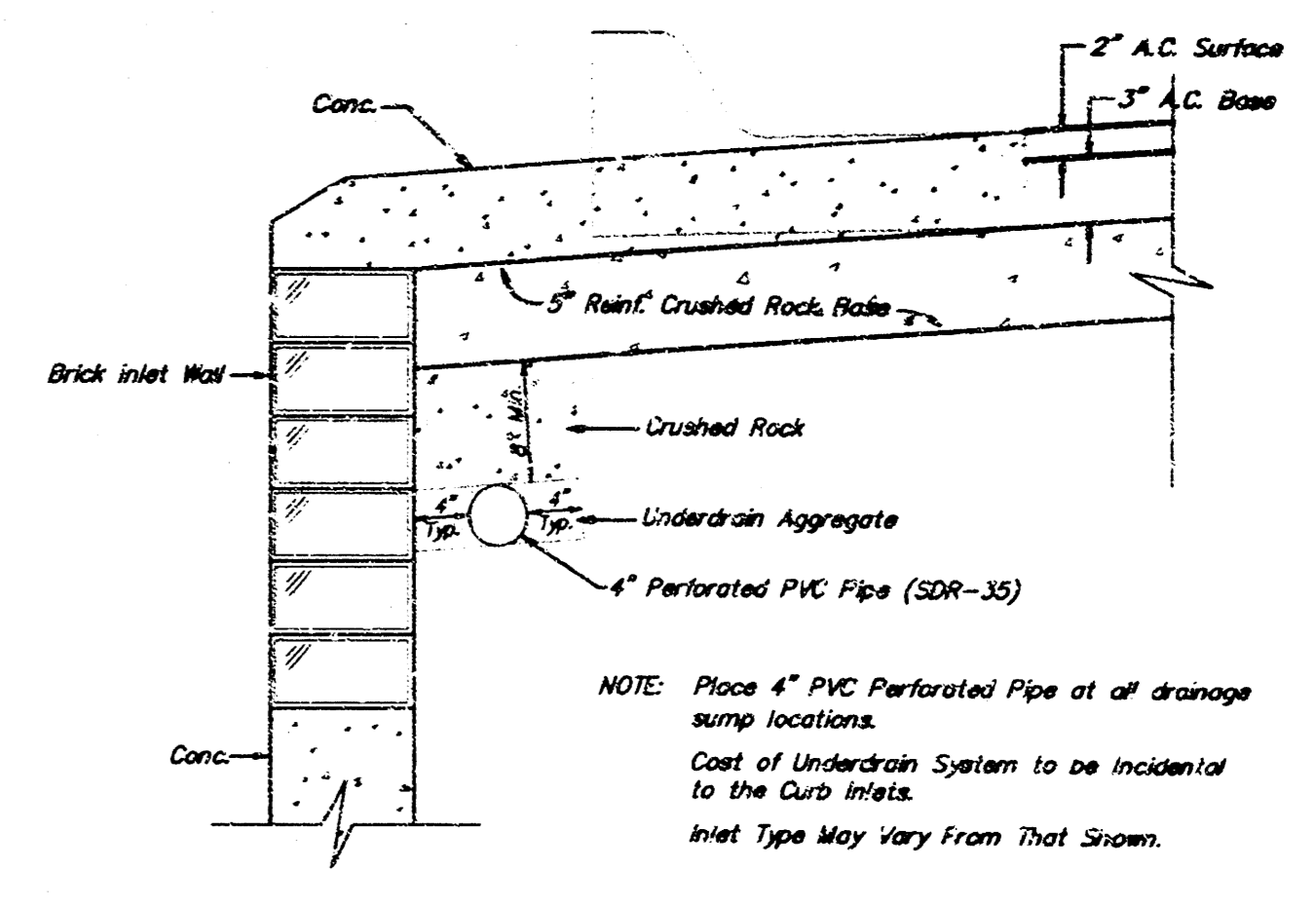
Elevation = 92.98 City Datum

City of Wichita Disc Located
 44' North and 30' East of the
 Centerlines of 47th Street South
 and Meridian.

Elevation = 91.78 City Datum



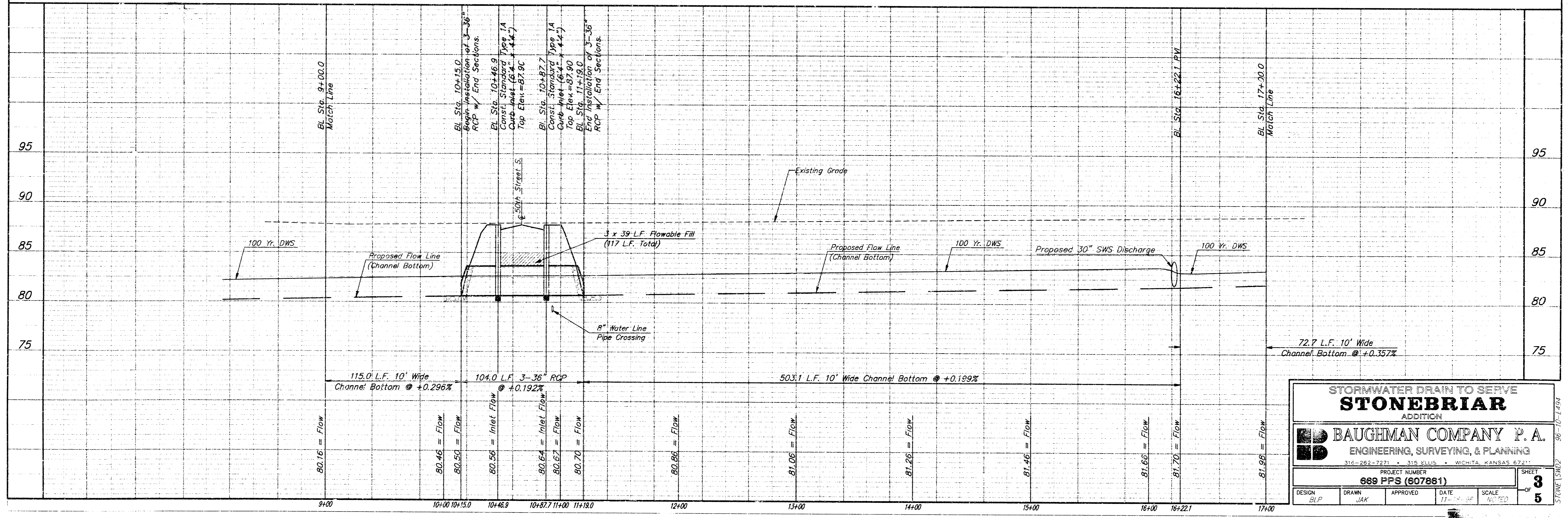
SCALE:
 1" = 40' HORIZONTAL
 1" = 5' VERTICAL
 • = IRON



UNDERDRAIN AGGREGATE
 Percent of Aggregate Retained

1"	0 to 10
3/4"	10 to 20
3/8"	20 to 40
2"	40 to 60
4"	60 to 100

Rock Quality Shall Conform To The Requirements Specified
 By K.O.D.T. 1990 Edition Standard Specification Subsection
 1102 For Granularity Class I.



STORMWATER DRAIN TO SERVE
STONEBRIAR
 ADDITION

BAUGHMAN COMPANY P.A.
 ENGINEERING, SURVEYING, & PLANNING
 316-262-7271 • 315 ELLIS • WICHITA, KANSAS 67211

PROJECT NUMBER
689 PPS (607861)

DESIGN: BLP DRAWN: JAK APPROVED: DATE: 11-1-07 SCALE: 1"=40' HORIZONTAL, 1"=5' VERTICAL SHEET: 3 OF 5

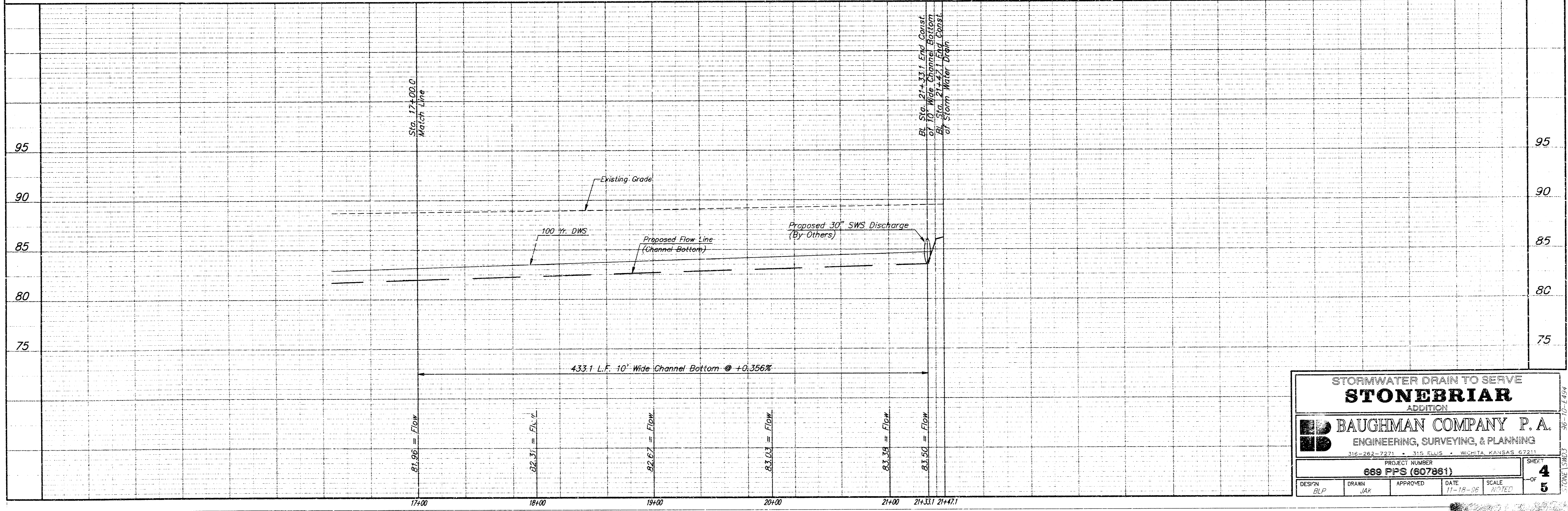
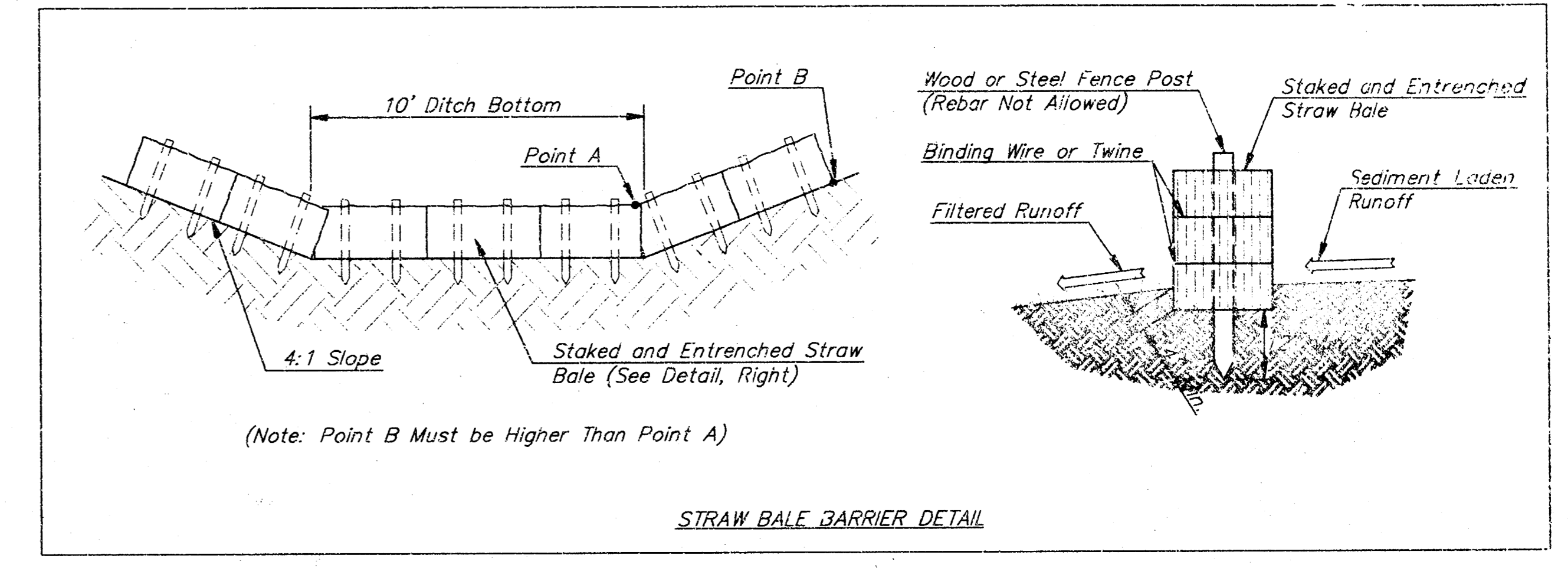
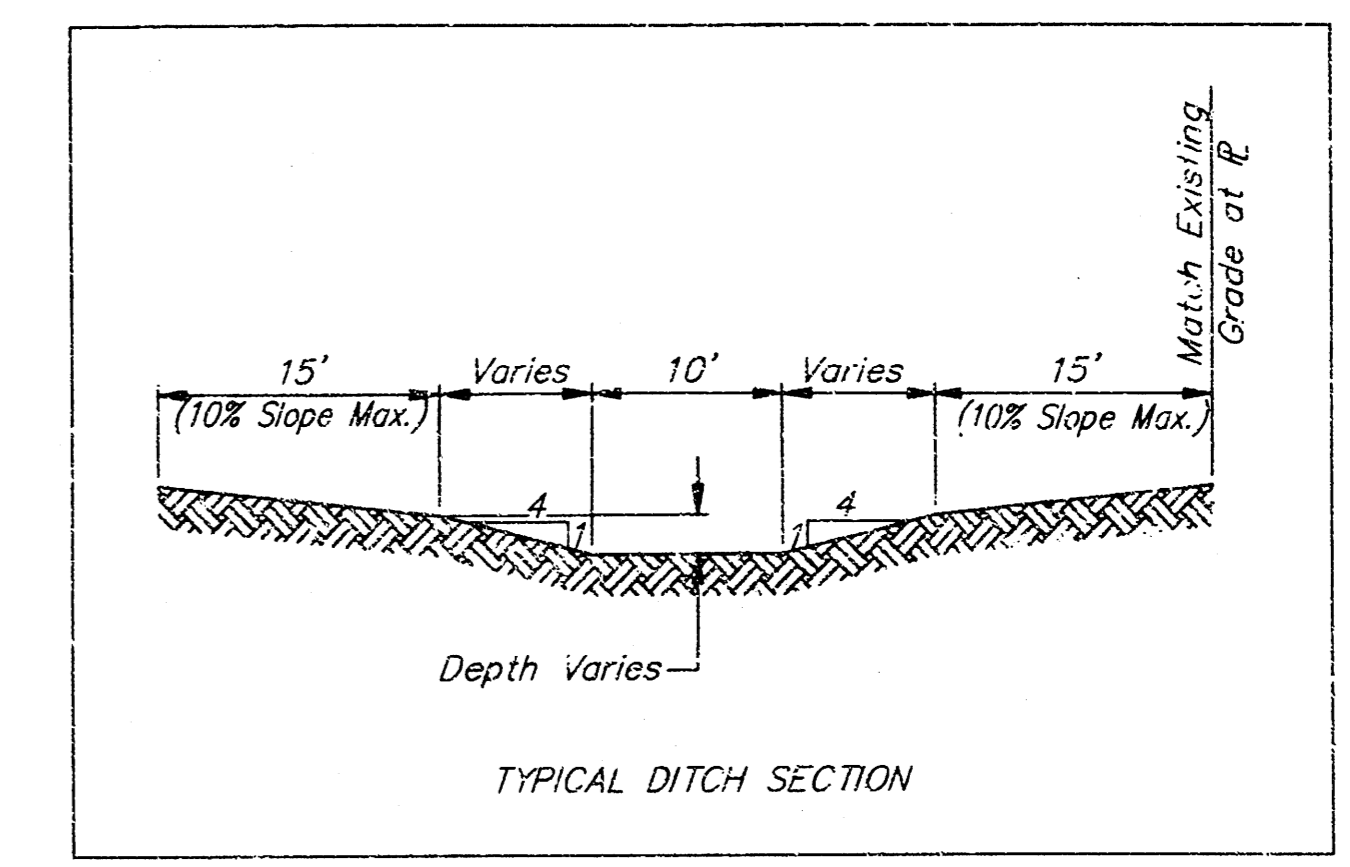
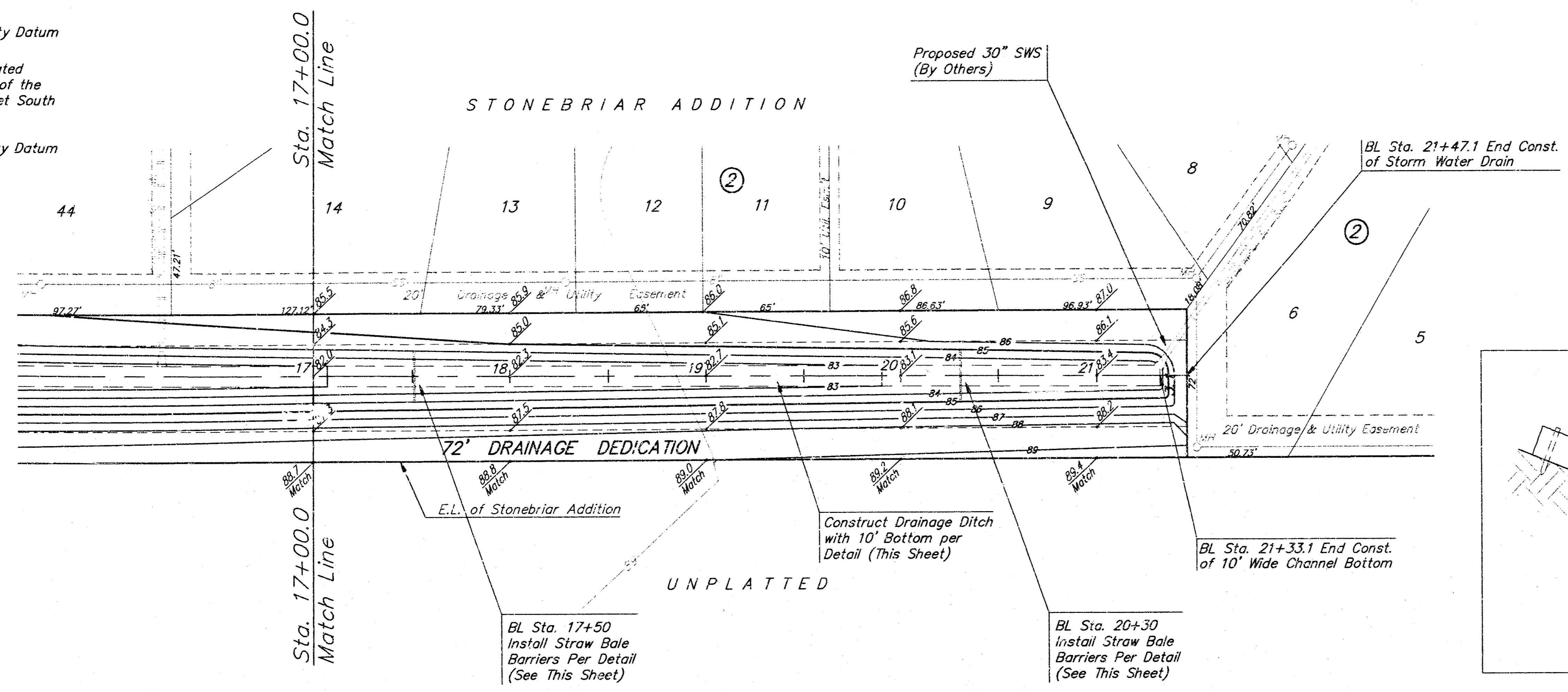
Benchmark:
 Railroad Spike in Power Pole
 Located 27' South and 402' East
 of the Northwest Corner of the
 NE 1/4, Section 24, TWP. 28-S,
 R-1-W.

Elevation = 92.98 City Datum

City of Wichita Disc Located
 44' North and 30' East of the
 Centerlines of 47th Street South
 and Meridian.

Elevation = 91.78 City Datum

SCALE:
 1" = 40' HORIZONTAL
 1" = 5' VERTICAL
 • = IRON



STORMWATER DRAIN TO SERVE
STONEBRIAR
 ADDITION

BAUGHMAN COMPANY P. A.
 ENGINEERING, SURVEYING, & PLANNING
 316-262-7271 • 315 ELLIS • WICHITA, KANSAS 67211

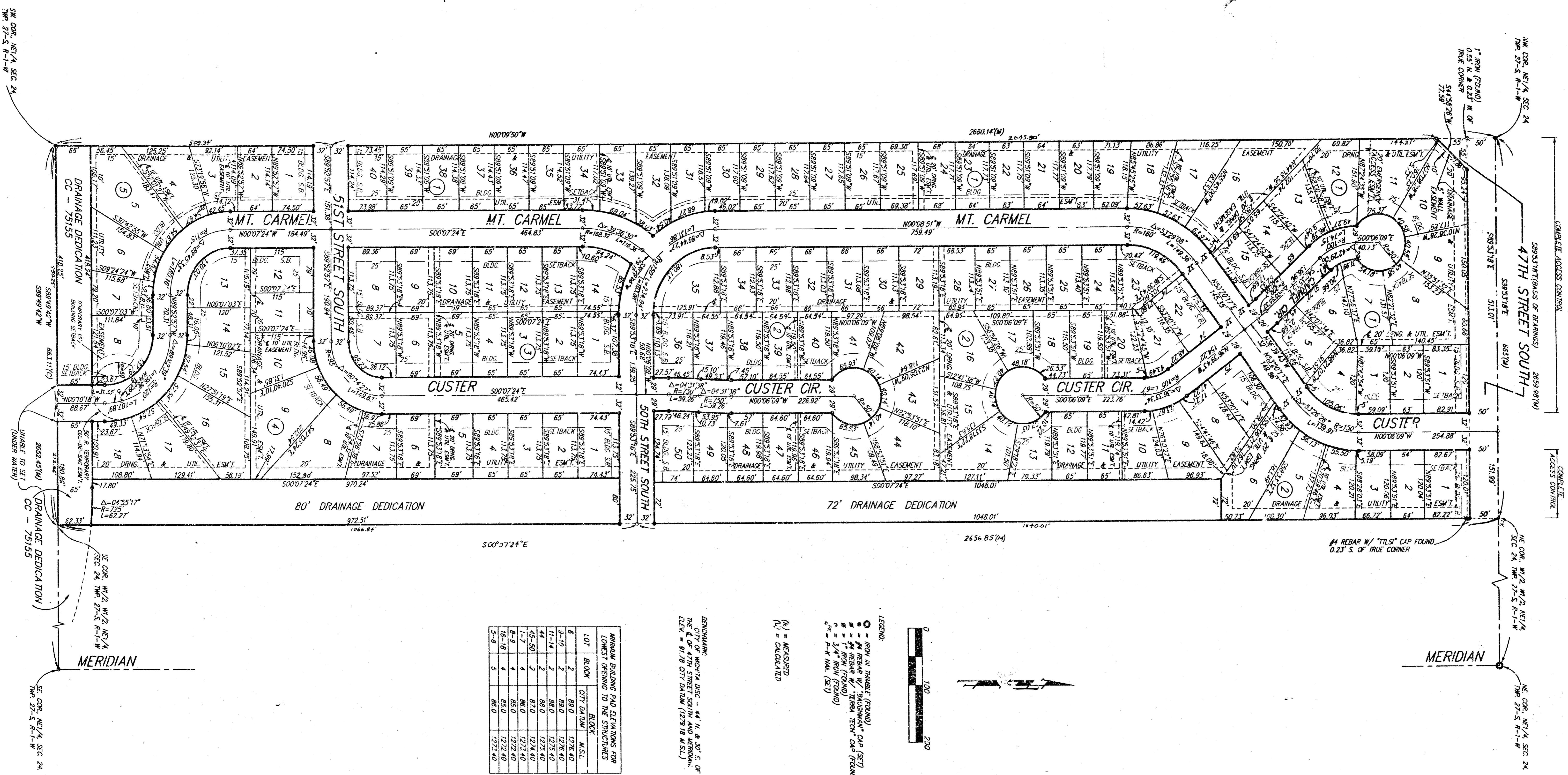
PROJECT NUMBER
669 FPS (807861)

DESIGN: BLP DRAWN: JAK APPROVED: DATE: 11-18-09 SCALE: AS SHOWN

SHEET **4** OF **5**

STONEBRAR ADDITION

WICHITA, SEDGWICK COUNTY, KANSAS



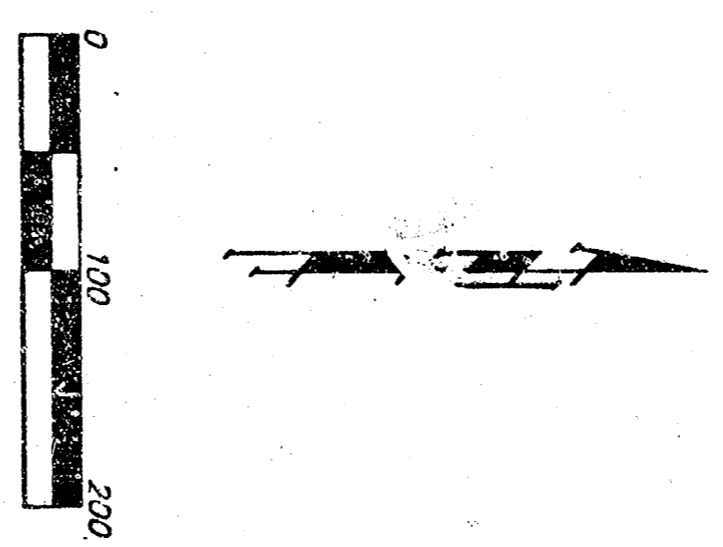
LOT	ANNUAL BUILDING PAID ESTIMATIONS FOR LOWEST OPENING TO THE STRUCTURES
1-2	1278.40
3-10	86.0
11-14	1278.40
15	86.0
16-20	1278.40
21-24	86.0
25-28	1278.40
29-32	86.0
33-36	1278.40
37-40	86.0
41-44	1278.40
45-48	86.0
49-50	1278.40

LEGEND:

- = IRON NAIL (FOUND)
- = IRON NAIL (MISSING) CAP SET
- = IRON NAIL (FOUND) CAP SET
- ▲ = IRON NAIL (FOUND)
- ◆ = IRON NAIL (FOUND)
- ◇ = IRON NAIL (FOUND)
- ◇ = 3/4" IRON NAIL (SET)

(M) = MEASURED
(C) = CALCULATED

BENCHMARK: MONUMENT - 41' N. & 31' E. OF THE CORNER OF 47th STREET SOUTH AND 47th STREET WEST - 81.78' (12378 W.S.L.)



State of Kansas) SS We, **Baughman Company, P.A.**, Surveyors in Sedgewick County and State do hereby certify that we have surveyed and plotted "STONEBRAR ADDITION", Wichita, Sedgewick County, Kansas and that the accompanying plat is a true and correct exhibit of the property surveyed described as follows: The W1/2 of the NE1/4 of Sec. 24, Twp. 28-S., R-1-W of the 6th P.M., Sedgewick County, Kansas.

Existing public easements and dedications being vacated by virtue of K.S.A. 12-512(b).

Baughman Company, P.A.

Michael G. Conroy
Michael G. Conroy, P.E., Surveyor

Know all men by these presents that we, the undersigned, have caused the land in the surveyors certificate to be added into Lots, Blocks, Streets, and Drainage Dedications to be known as "STONEBRAR ADDITION", Wichita, Sedgewick County, Kansas. The utility easements are hereby granted as indicated for the construction and maintenance of all public utilities. The drainage and utility easements are hereby granted as indicated for drainage purposes and for the construction and maintenance of all public utilities. The emergency access easements are hereby granted as indicated for emergency access purposes and no fences or other obstructions shall be constructed or placed on or within these easements. The well easements are hereby granted as indicated for the construction and maintenance of a private screening well and utility man lines and service lines shall be allowed to cross these easements. The temporary "as-is" easement and temporary 13 foot building setback line shall expire at such time as the street at the south end of the plot is extended south. The streets are hereby dedicated to and for the use of the public. The drainage dedications are hereby dedicated to the public for drainage purposes, open space, and public use as a recreational area to include biking and hiking. All builders rights of access to or from 47th Street South over and across the northwest line of Lots 10 and 11, Block 1, and the north line of said Lot 10 and Lots 1, 8, and 9, Block 1, and Lot 1, Block 2 are hereby granted as indicated to the City of Wichita, Kansas. The Minimum Building Foot Elevations for the lowest opening to the structures shall be as shown on the face of the plat.

Existing public easements and dedications being vacated by virtue of K.S.A. 12-512(b).

Investors Group, Inc.

Paul E. Kelsey
Paul E. Kelsey, President

State of Kansas) SS The foregoing instrument acknowledged before me this 13th day of AUGUST, 1996, by **Paul E. Kelsey**, President of **Investors Group, Inc.**, on behalf of the corporation.

Paul E. Kelsey
Paul E. Kelsey, Notary Public

State of Kansas) SS The undersigned, holders of a mortgage on the above described property, do hereby consent to this plat of "STONEBRAR ADDITION", Wichita, Sedgewick County, Kansas.

State Bank of Cowich

James D. Ascaroff
James D. Ascaroff, Assistant Vice-President

State of Kansas) SS The foregoing instrument acknowledged before me this 13th day of AUGUST, 1996, by **James D. Ascaroff**, Assistant Vice-President, State Bank of Cowich, on behalf of the bank.

James D. Ascaroff
James D. Ascaroff, Notary Public

My App'l. Exp. 5/15/97

Paul E. Kelsey
Paul E. Kelsey, Notary Public

PAUL E. KELSEY
NOTARY PUBLIC
STATE OF KANSAS

This plat of "STONEBRAR ADDITION", Wichita, Sedgewick County, Kansas has been submitted to and approved by the Wichita-Sedgewick County Metropolitan Area Planning Commission, Wichita, Kansas.

Dated this 11th day of JULY, 1996

Wichita-Sedgewick County Metropolitan Area Planning Commission

Susan Osborne-Harris
Susan Osborne-Harris, Chair

M. Wayne Smith
M. Wayne Smith, Secretary

Martin S. Knout
Martin S. Knout, Secretary

This plat approved and all dedications shown hereon accepted by the City Council of the City of Wichita, Kansas, this 17th day of SEPTEMBER, 1996.

Bob Knight
Bob Knight, Mayor

Pat Burnett
Pat Burnett, City Clerk

Entered on transfer record this 13th day of September, 1996.

Pat Kelsey
Pat Kelsey, Register of Deeds

Ed Reso
Ed Reso, Deputy

State of Kansas) SS This is to certify that this plat has been filed in the office of the Register of Deeds this 13th day of September, 1996, at 12:00 o'clock P.M. and is duly recorded.

Pat Kelsey
Pat Kelsey, Register of Deeds

Ed Reso
Ed Reso, Deputy



1569968