

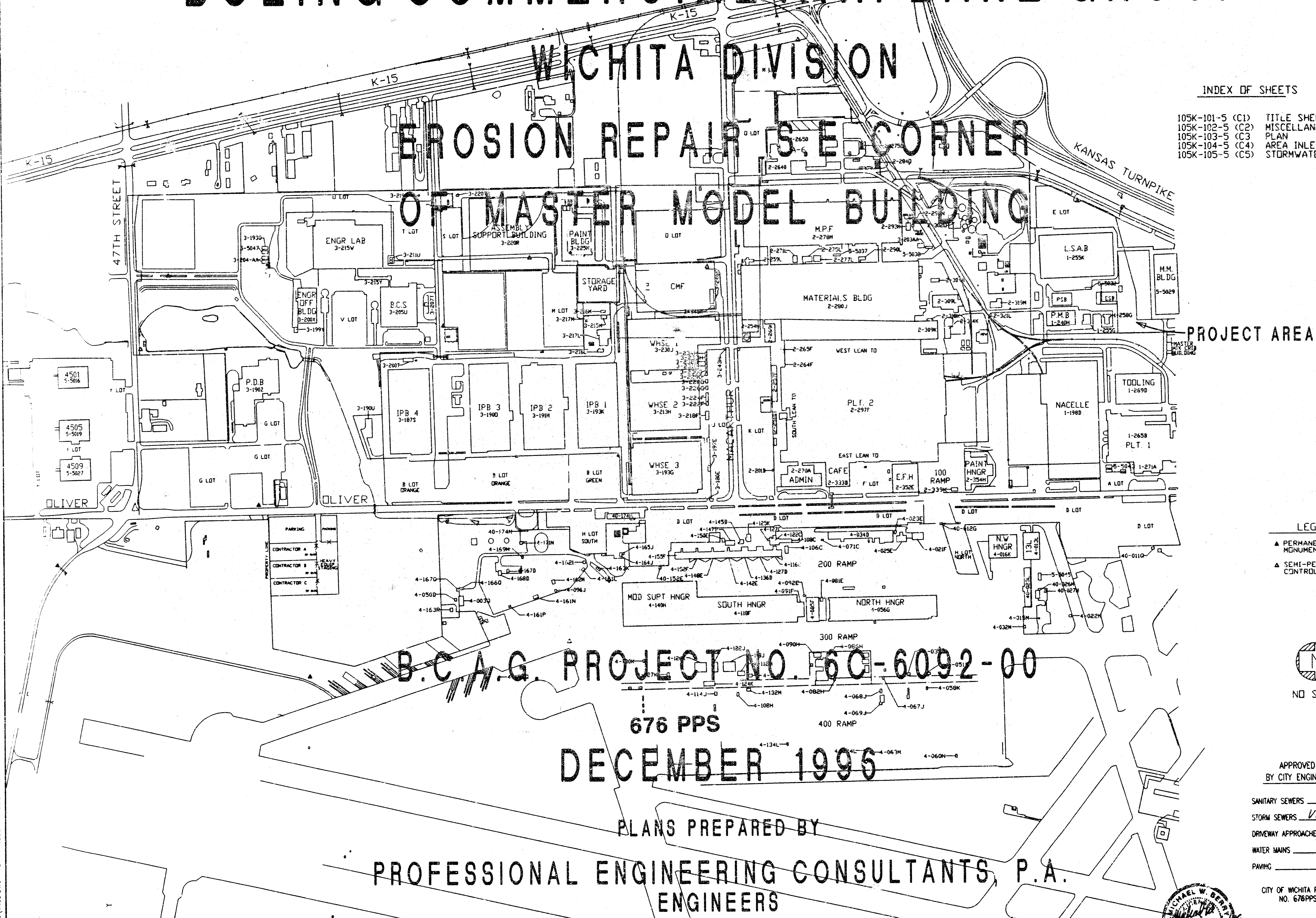
BOEING COMMERCIAL AIRPLANE GROUP

WICHITA DIVISION

EROSION REPAIR S.E. CORNER OF MASTER MODEL BUILDING

INDEX OF SHEETS

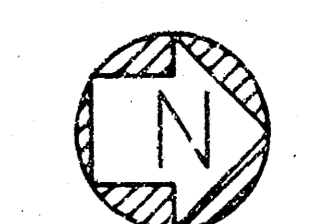
- 105K-101-5 (C1) TITLE SHEET
- 105K-102-5 (C2) MISCELLANEOUS DETAILS
- 105K-103-5 (C3) PLAN
- 105K-104-5 (C4) AREA INLET DETAILS
- 105K-105-5 (C5) STORMWATER SKIMMER/TRAP



PROJECT AREA

LEGEND

- ▲ PERMANENT CONTROL MONUMENT
- ▲ SEMI-PERMANENT CONTROL MONUMENT

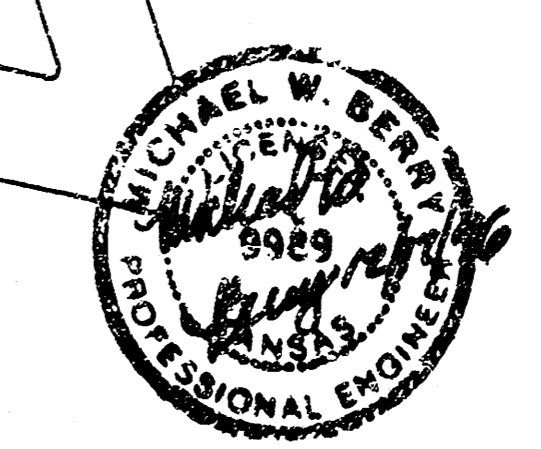


NO SCALE

APPROVED AS NOTED
BY CITY ENGINEER OF WICHITA

SANITARY SEWERS _____
STORM SEWERS VRH 12/19/96
DRIVEWAY APPROACHES _____
WATER MAINS _____
PAVING _____

CITY OF WICHITA PRIVATE PROJECT
NO. 676PPS (607861)



B.C.A.G. PROJECT NO. 60-6092-00

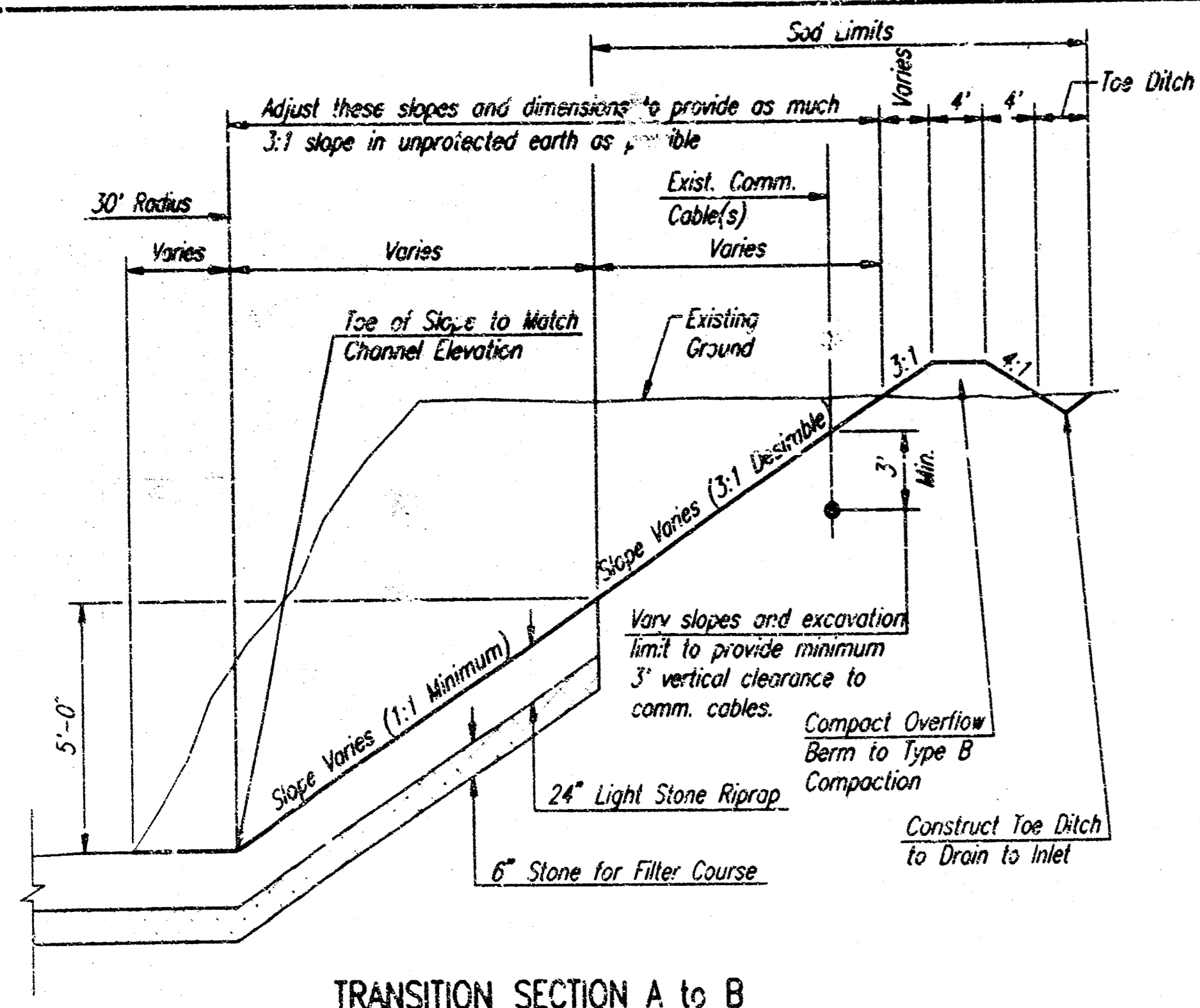
676 PPS

DECEMBER 1996

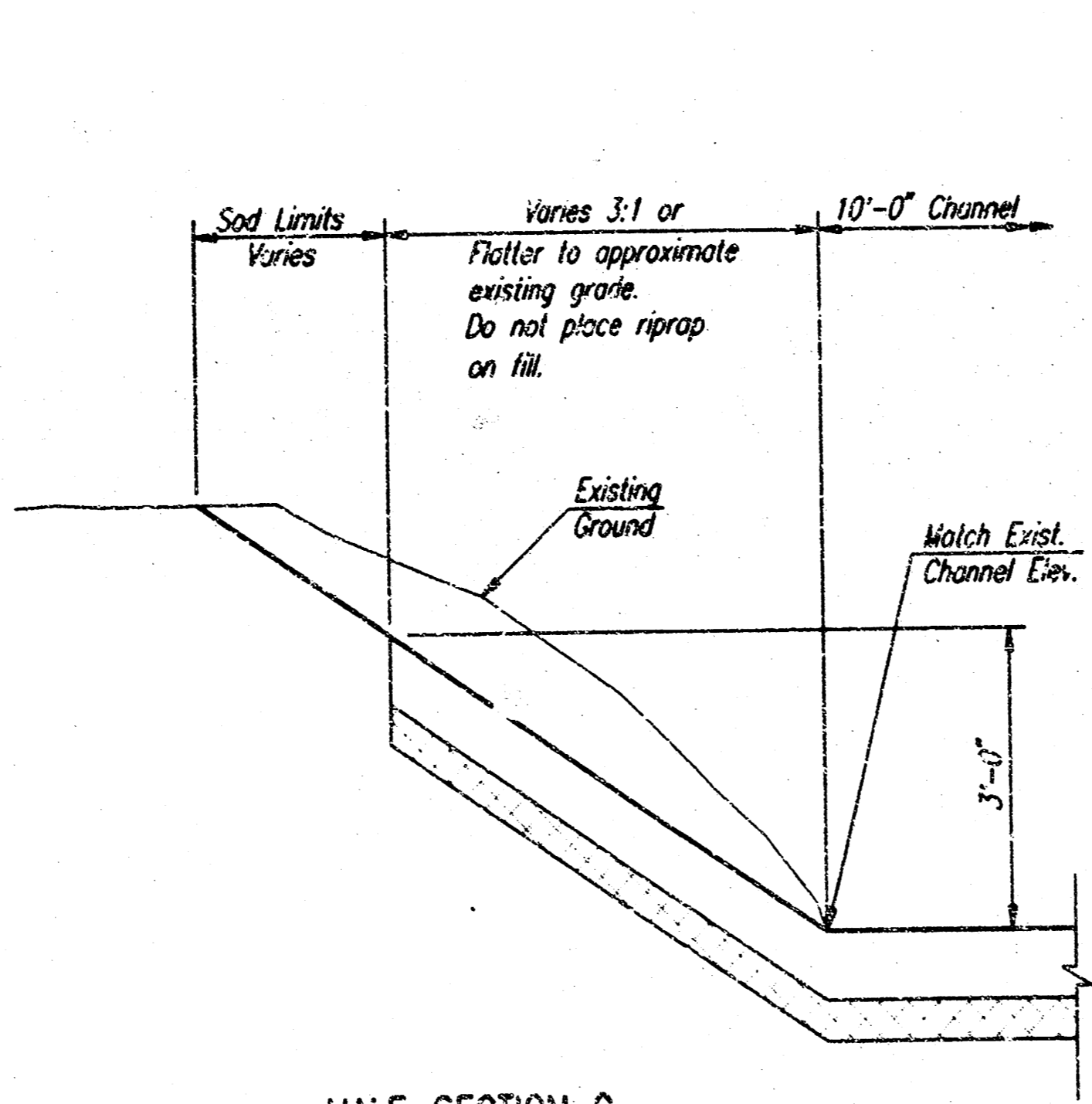
PLANS PREPARED BY

PROFESSIONAL ENGINEERING CONSULTANTS, P.A.
ENGINEERS
WICHITA, KANSAS

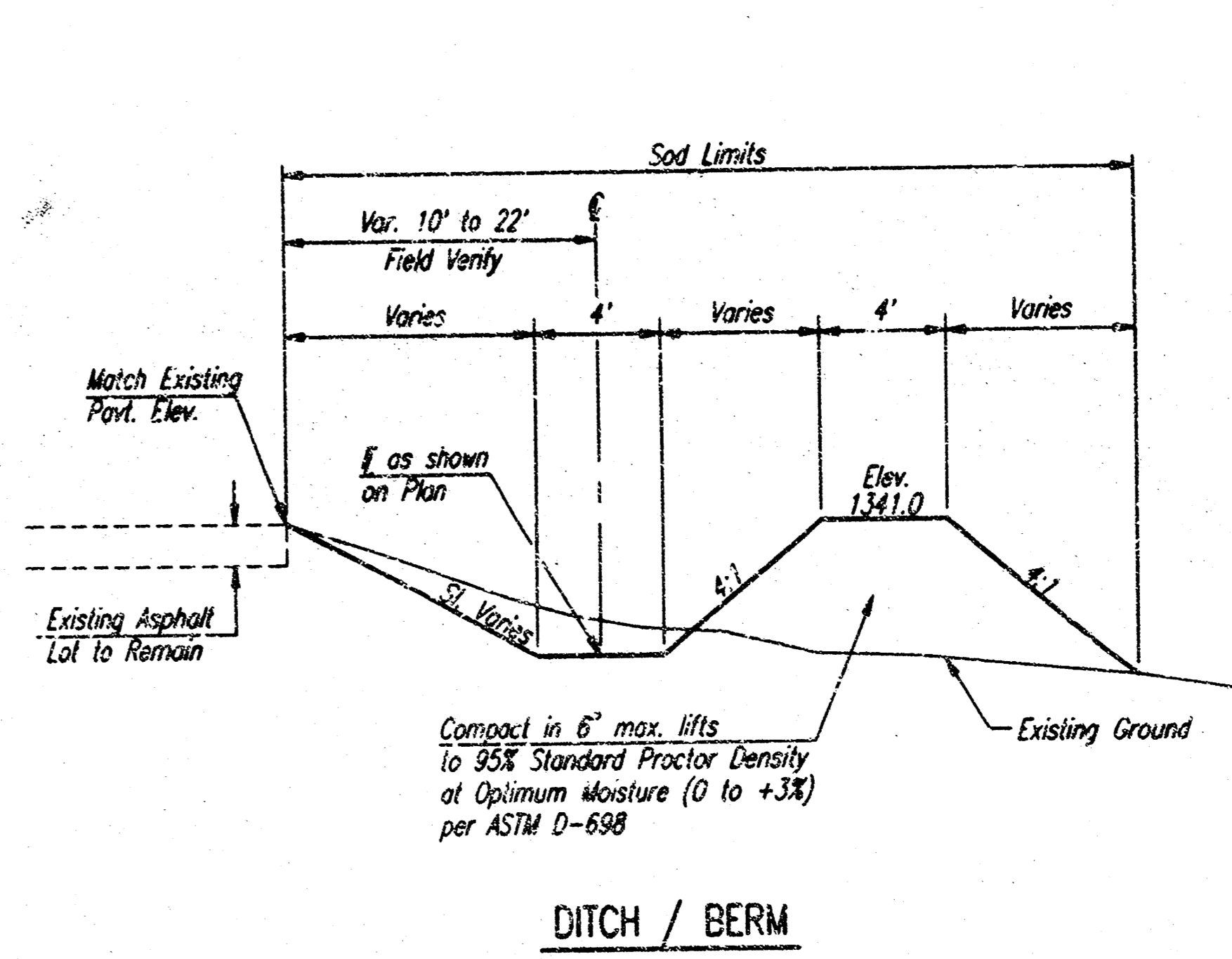
DSAR MWG 11/17/96 11:59:27 am
C:\1994\94-05\05\BILL.DWG 1:17-1996



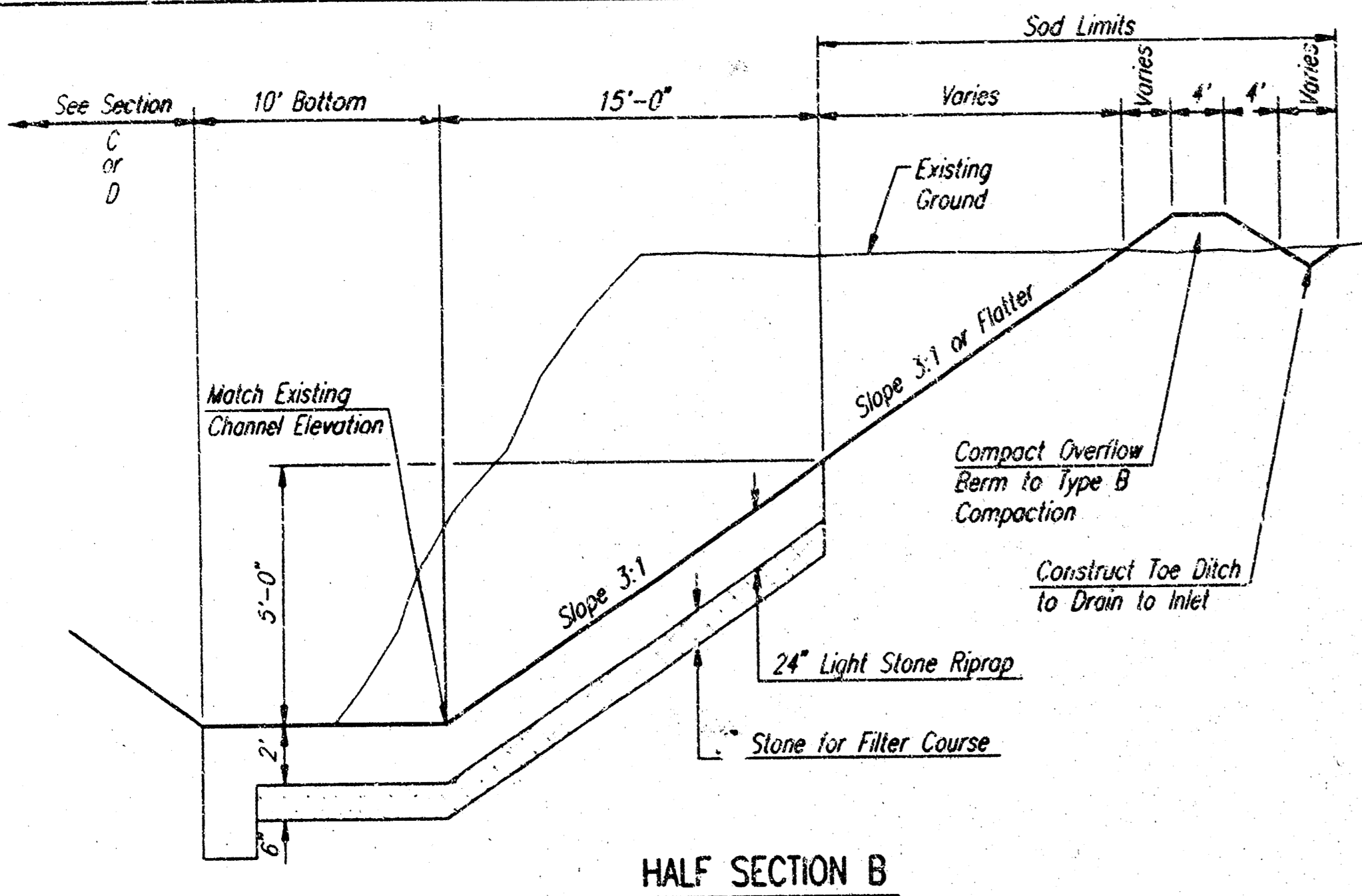
TRANSITION SECTION A to B



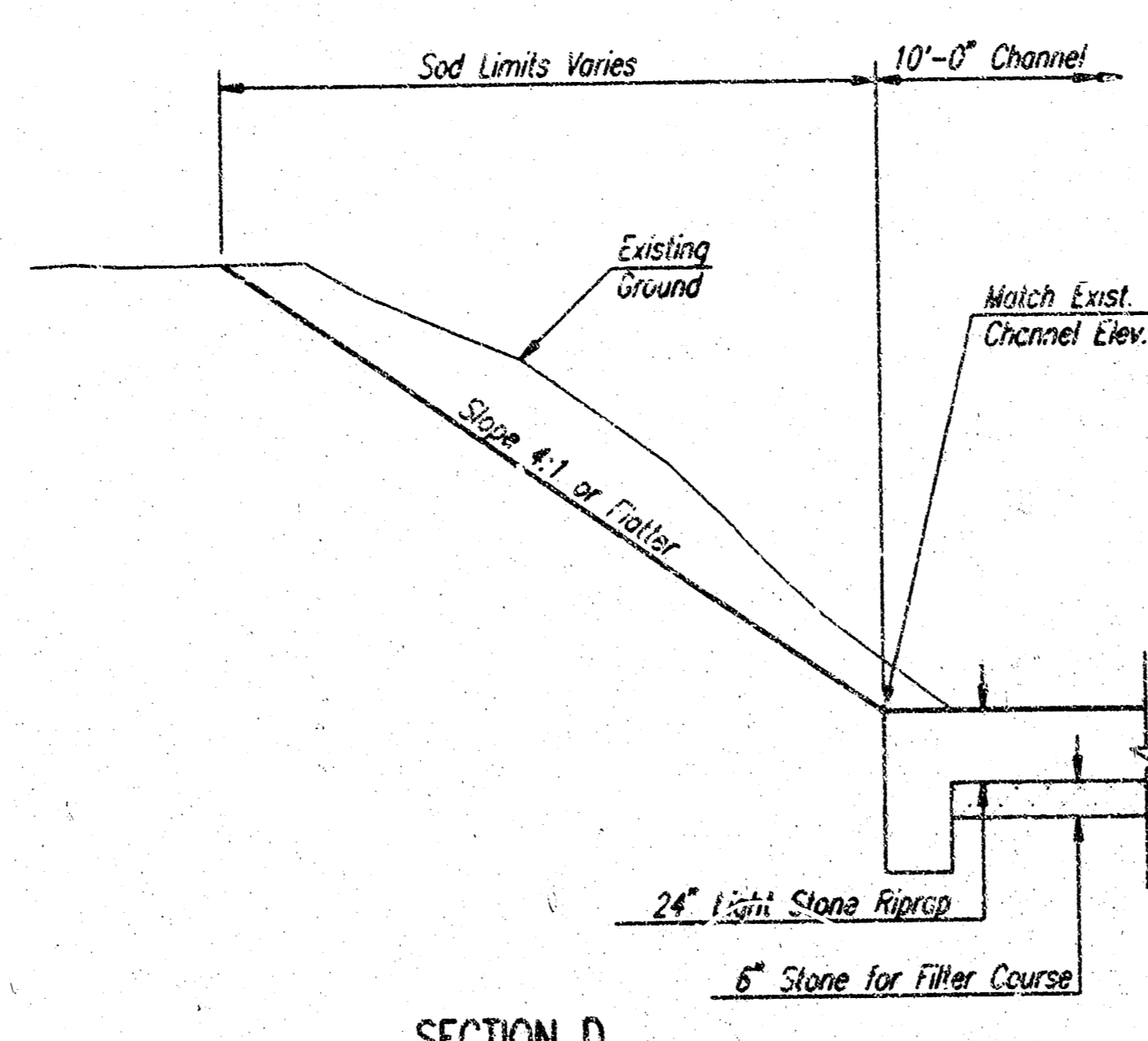
HALF-SECTION C



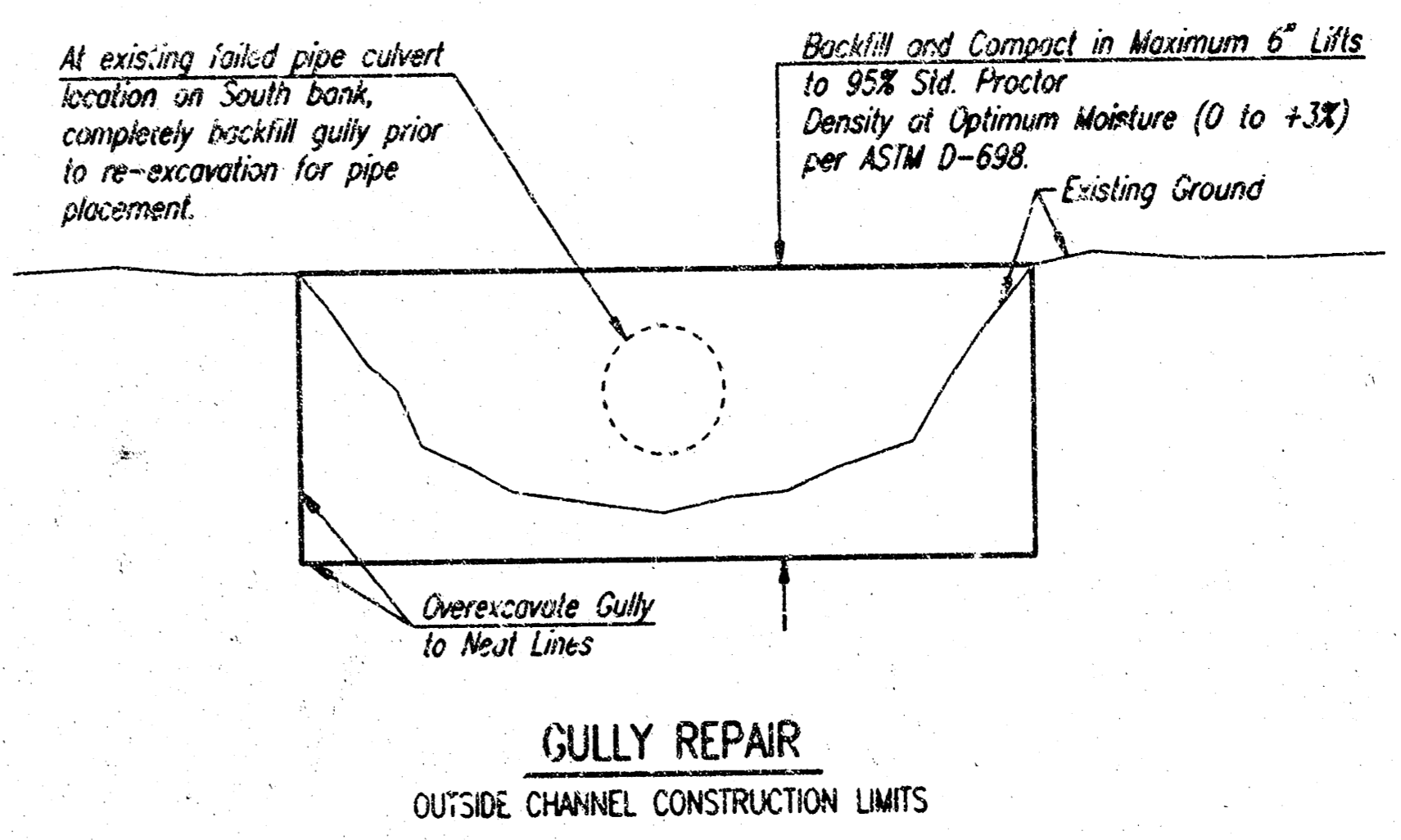
DITCH / BERM



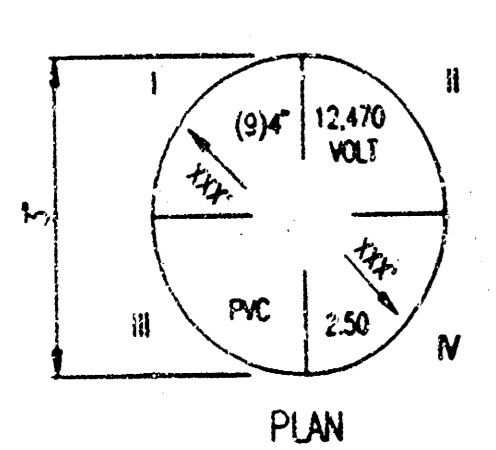
HALF SECTION B



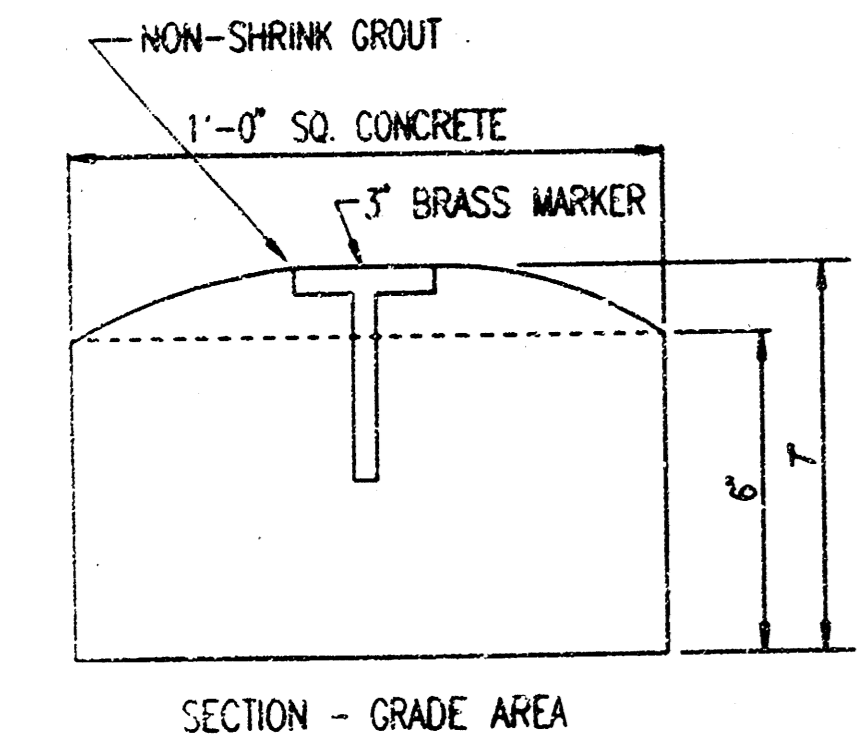
SECTION D



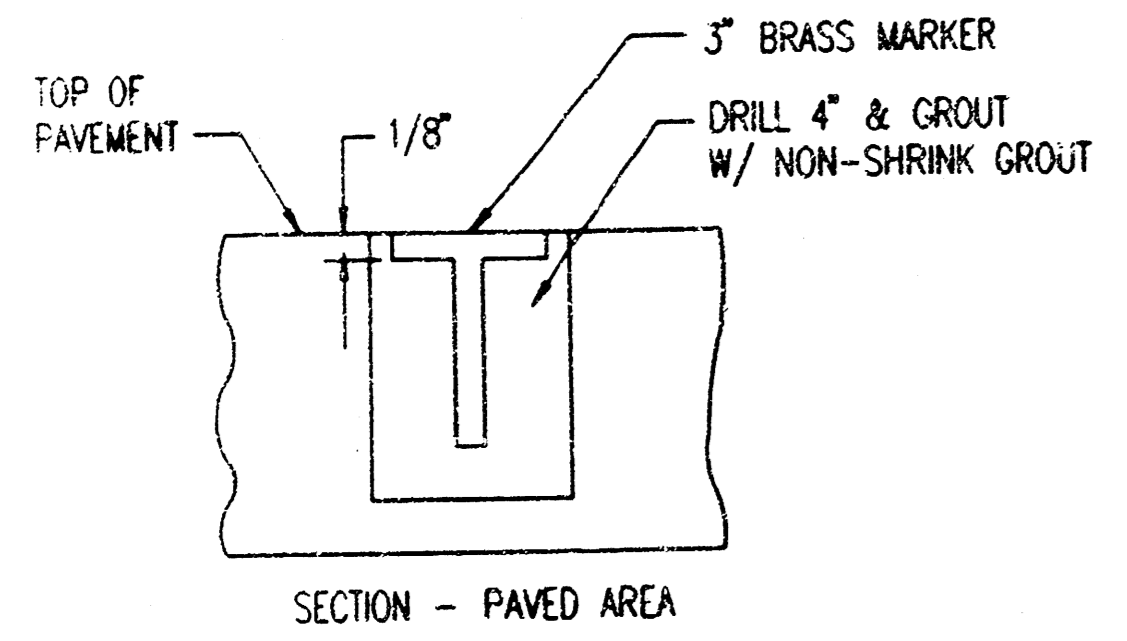
GULLY REPAIR
OUTSIDE CHANNEL CONSTRUCTION LIMITS



UTILITY MARKER DETAIL



SECTION - GRADE AREA



SECTION - PAVED AREA

LEGEND/QUADRANT		CODE	DESCRIPTIONS:
I	II	MECHANICAL	MECHANICAL
III	IV	ELECTRICAL	ELECTRICAL
SIZE	SIZE	QUANTITY AND SIZE	QUANTITY AND SIZE
UTILITY	UTILITY	WATER, GAS, ETC.	WATER, GAS, ETC.
MATERIAL	MATERIAL	IRON, PVC, ETC.	IRON, PVC, ETC.
DEPTH	DEPTH	RGS OR PVC	RGS OR PVC
		DISTANCE, IN FEET, FROM TOP OF MARKER TO TOP OF UTILITY	

DESCRIPTION	ABBREVIATION
AIR	AIR
CHILLED WATER SUPPLY	CHWS
CHILLED WATER RETURN	CHWR
CONDENSATE	CNDST
COMMUNICATION	COMM
CONDENSER WATER SUPPLY	CWS
CONDENSER WATER RETURN	CWR
DEIONIZED WATER	DI
GAS	GAS
HOT WATER SUPPLY	HWS
HOT WATER RETURN	HWR
IRRIGATION	IRRIG
INDUSTRIAL WASTE	IW
SANITARY SEWER	SAN SWR
STEAM	STEAM
STORM WATER SEWER	STORM
TRANSITE	TRITE
VOLTAGE	VOLT
DOMESTIC WATER	WTR
WATER RECOVERY	WTR REC

MATERIALS:	MATERIALS:
CAST IRON PIPE	CIP
CORRUGATED METAL PIPE	CMP
COMPOSITE PIPE	CP
POLYVINYL CHLORIDE	PVC
REINFORCED CONCRETE PIPE	RCP
RIGID GALVANIZED STEEL	RGS
STEEL PIPE	STEL PIPE
VITRIFIED CLAY PIPE	VCP
ALUMINUM CONDUIT	AL C

APPLY THE FOLLOWING IN THE APPROPRIATE CASES:	CONC
CONCRETE ENCASED	CONC
DIRECT BURIAL	DB
DOUBLE CONTAINED PIPE	DCP
FIRE PROTECTION	FP
UTILITY TRENCH	UT

UNDERGROUND UTILITY MARKERS	
ARROW	DIRECTION(S) OF UTILITY WITH DISTANCES, XXX IN FEET, TO AND FROM ADJACENT MARKER(S) OR UTILITY STUB-UP(S).
MARKERS	SHALL BE LOCATED ON THE DRAWINGS, FURNISHED, AND INSTALLED PER THE FOLLOWING REQUIREMENTS:
LOCATION	EXTERIOR: CHANGE OF DIRECTION WITHIN 5'-0" OF WALL MINIMUM ONE PER REQUIRED UTILITY CROSSING OF SIDEWALKS, ROADS, ETC. MAXIMUM 150' APART, WITH LINE OF SIGHT ACCESS CONTROL POINTS, MANHOLES, VALVES, ETC. INTERIOR: CHANGE OF DIRECTION WITHIN 5'-0" OF WALL MINIMUM ONE PER REQUIRED UTILITY MAXIMUM 50' APART, WITH LINE OF SIGHT ACCESS CONTROL POINTS, MANHOLES, VALVES, ETC.
MARKERS REQUIRED:	SHALL BE INSTALLED FOR THE FOLLOWING UTILITIES: EXTERIOR: ALL EXTERIOR PIPES OR CONDUITS EXCEPT IRRIGATION (SPRINKLER SYSTEMS) DISTRIBUTION PIPE INTERIOR: 600 VOLT AND ABOVE SUBSTATION FEEDERS ENVIRONMENTAL UTILITIES GAS AND/OR PROPANE LINE(S) CRITICAL SERVICE - EMERGENCY, BREATHING AIR, ETC. ALL PIPE AND/OR CONDUIT OF 1 1/4" AND LARGER DIAMETER
NOTES:	LETTERING SHALL BE STAMPED 1/4" BLOCK STYLE LETTERS. ALL NEW AND EXISTING (UNCOVERED AT POINT OF EXCAVATION) UNDERGROUND UTILITIES SHALL BE MARKED PER THE ABOVE REQUIREMENTS. ANY DISTURBED MARKERS SHALL BE REPLACED. MARKERS SHALL BE 3" FLAT BRASS SURVEY MARKER, LIETZ #8434-08 OR BOEING PLANT ENGINEERING APPROVED EQUAL SERVICE CONTRACTORS MAY OBTAIN AND STAMP MARKERS AT THE UTILITY MAPPING CENTER (BLDG. 2-2606). ACCESS CONTROL POINTS, MANHOLES, VALVES, ETC. COVERS SHALL REFLECT CORRECT UTILITY.

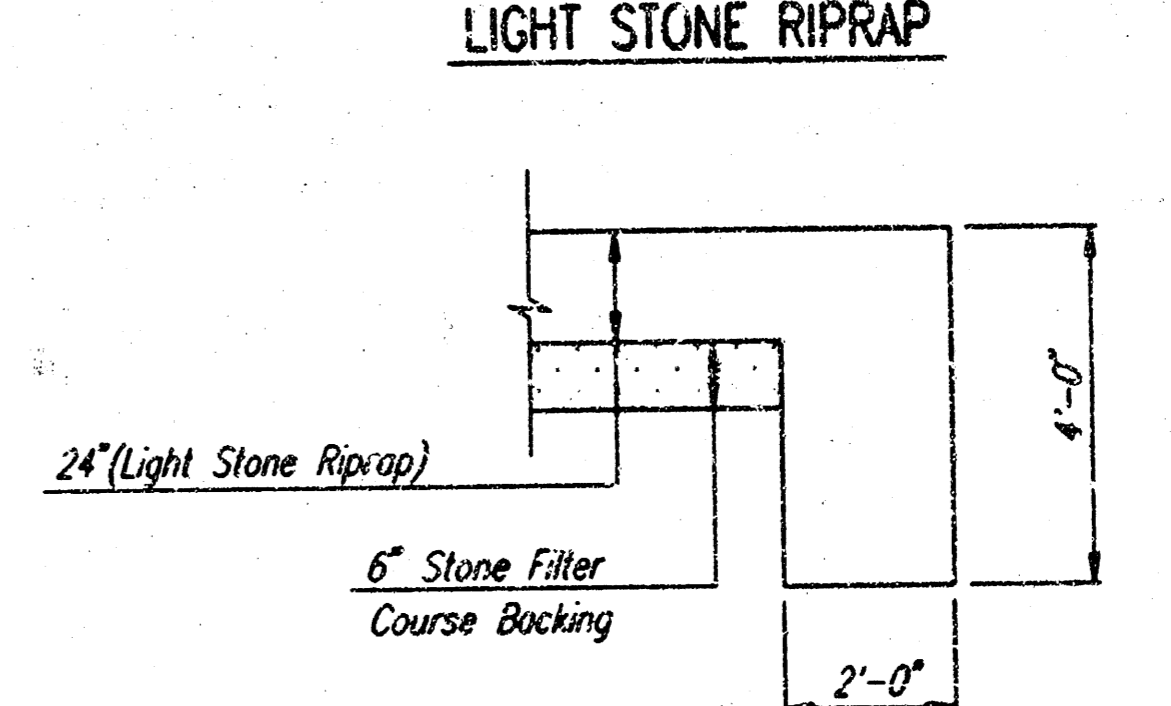
SODDING

ALL DISTURBED AND EXCAVATED AREAS SHALL BE SODDED WITH K-31 FESCUE SOD AS SHOWN ON THE DETAILS. THE SOD PLANTING SEASON SHALL BE MARCH 1, TO APRIL 15 OR SEPTEMBER 1 TO NOVEMBER 15.

AREAS TO BE SODDED SHALL BE PREPARED BY THOROUGH CULTIVATION, SMOOTHING, REMOVAL OF CLODS AND STONES GREATER THAN ONE INCH IN SIZE, REMOVAL OF WEEDS, AND THOROUGHLY WATERING THE AREA.

SOD SHALL BE STAKED WITH TWO TO FOUR WOOD LATH STAKES OR ELEVEN GAUGE UNGALVANIZED WIRE STAPLES PER SQUARE YARD. SOD SHALL BE FIRMED AFTER PLACEMENT WITH A ROLLER OR TAMPER. ALL AIR POCKETS SHALL BE REMOVED, AND THE SOD ROOTS SHALL BE PACKED FIRMLY INTO THE PREPARED SOIL.

THE CONTRACTOR SHALL WATER ALL SOD IMMEDIATELY AFTER PLACEMENT. ALL SODDED AREAS SHALL BE KEPT THOROUGHLY WATERED BY THE CONTRACTOR FOR THIRTY DAYS AFTER PLACEMENT.



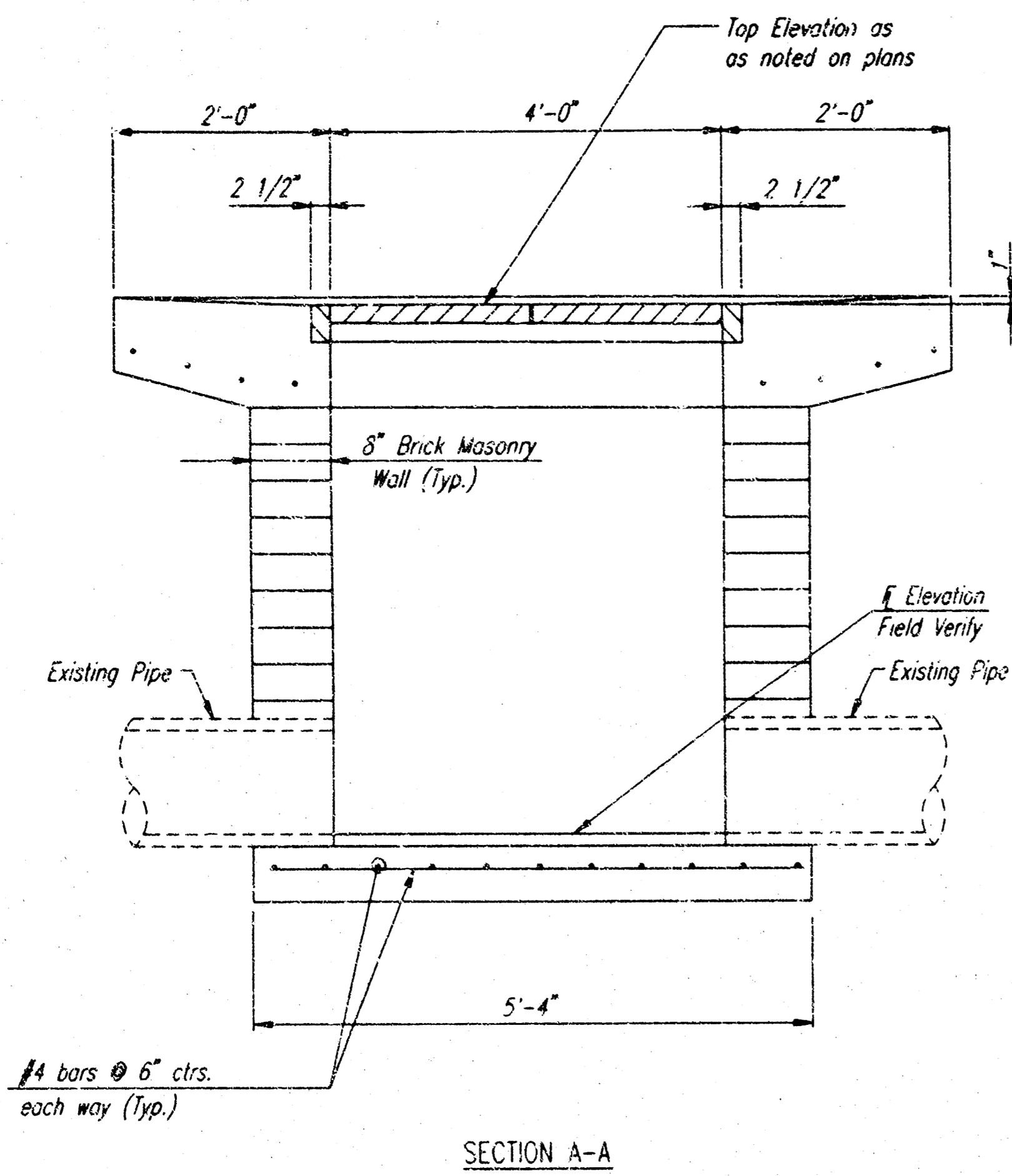
TYPICAL SECTION THRU TOEWALL
NO SCALE

- NOTES:**
- ALL RIPRAP FOR THIS PROJECT SHALL BE NATURAL STONE. NEITHER BROKEN CONCRETE, FABRIC ENVELOPE, NOR PREMIXED DRY PACKAGED CONCRETE BAG ALTERNATES WILL BE ALLOWED.
 - TOEWALLS SHALL BE INSTALLED ALONG EDGES OF STONE RIPRAP AS SHOWN IN SECTIONS.
 - STONE FOR RIPRAP AND STONE FOR FILTER COURSE SHALL CONFORM TO THE REQUIREMENTS OF SUBSECTION 1116 OF "STANDARD SPECIFICATIONS FOR STATE ROAD AND BRIDGE CONSTRUCTION", KANSAS DEPARTMENT OF TRANSPORTATION, EDITION 1980. GRADATION OF RIPRAP SHALL BE LIGHT SERIES, 24" AS STATED IN TABLE II. STONE FOR FILTER COURSE SHALL BE TYPE III. CONTRACTOR SHALL SUPPLY MANUFACTURER'S MATERIAL. CERTIFICATION FOR THESE MATERIALS.

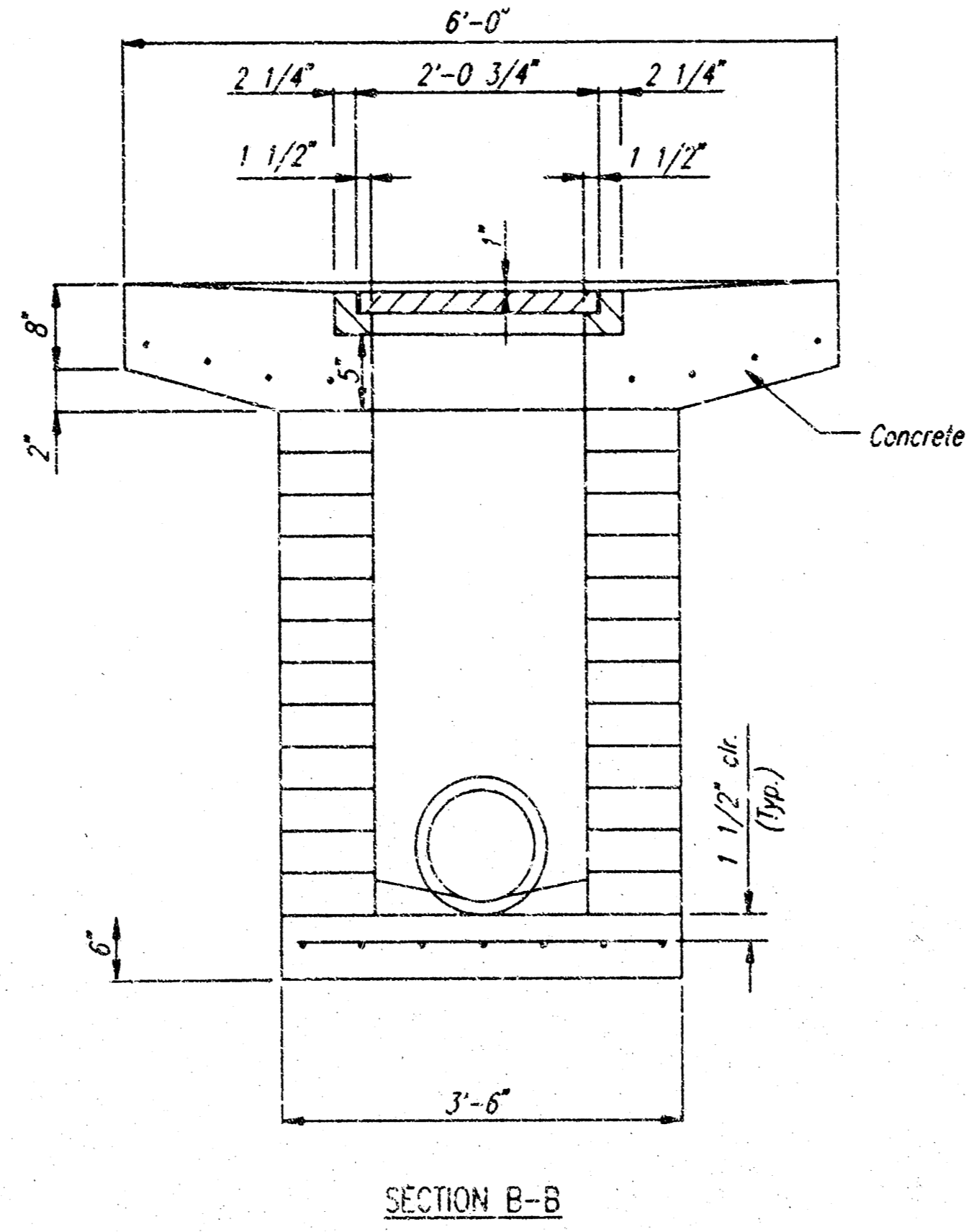
APPROVED	BY	
REASON		
DATE		
ENGINEER FOR	APPROVED	NOT REVIEWED
	<input type="checkbox"/>	<input type="checkbox"/>
	<input type="checkbox"/>	<input type="checkbox"/>
DATE		
ACCEPTABILITY	APPROVED BY	DATE
THIS DESIGN IS APPROVED		
EROSION REPAIR S.E. CORNER OF MASTER MODEL BUILDING MISCELLANEOUS DETAILS BOEING COMMERCIAL AIRPLANE GROUP WICHITA KANSAS		
PROFESSIONAL ENGINEERING CONSULTANTS professional association 303 South Topeka / (316) 262-2881 Wichita, Kansas 67202		
Designed by	MWB	Sheet C2
Drawn by	DEP	96
Sym	0	Date Dec. 96
Project No.	6C-5632-00	
C.O.W. PROJ. NO.	PPS (607861)	
MICRO FILM	<input type="checkbox"/> YES <input type="checkbox"/> NO	Sheet C2
PLANT ENGINEERING CONTACT:	JERRY PUCKETT 526-1894	Drawing No. 105K-102-5

DATE: 12-17-96
 DRAWN BY: DEP
 CHECKED BY: MWB
 PROJECT: 6C-5632-00

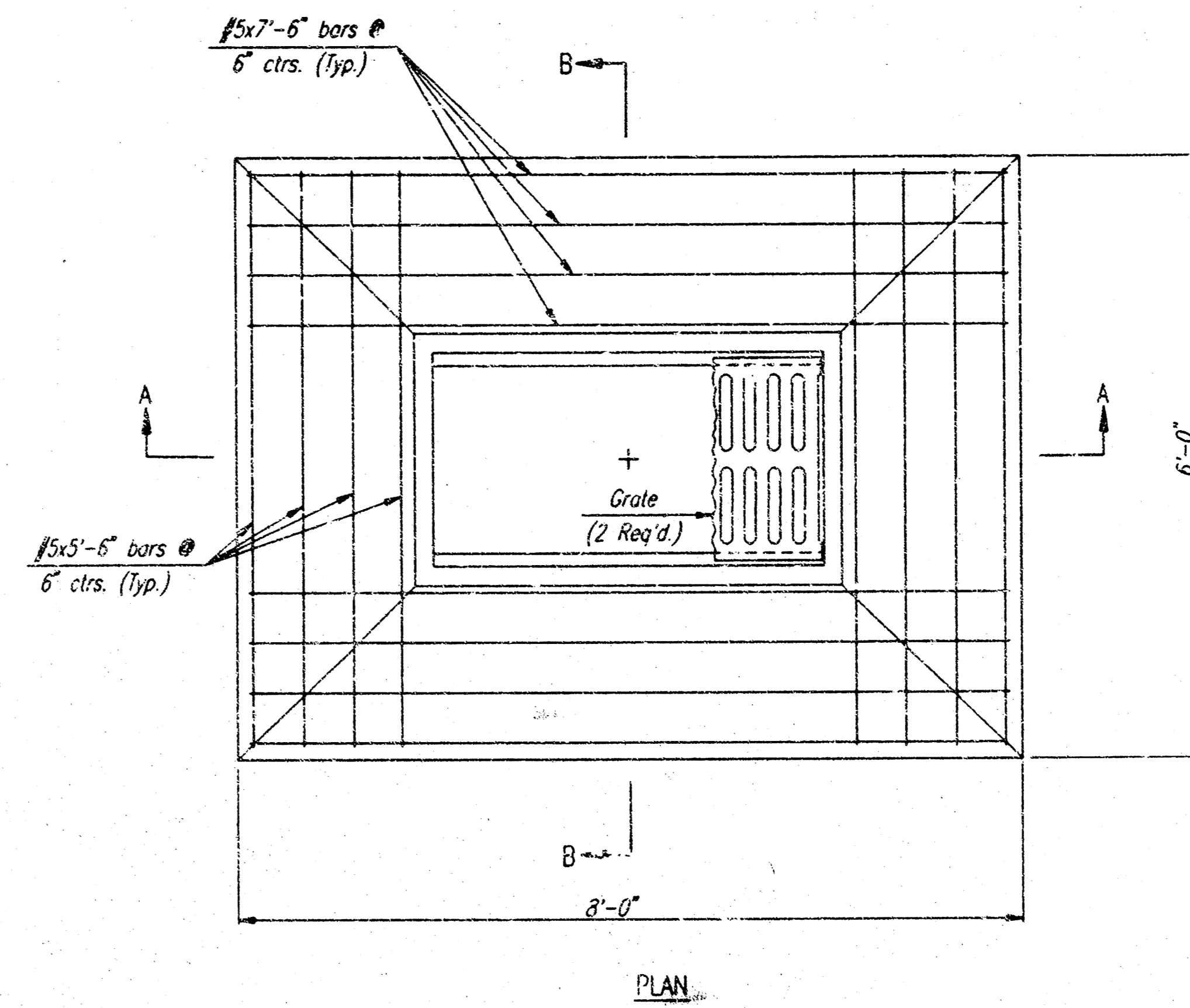
CONR MMB UPER DEF SCALE 1=1/8"
 O:\1994\94440\05\INLET.DWG 12-17-1996 12:34:00 pm



SECTION A-A

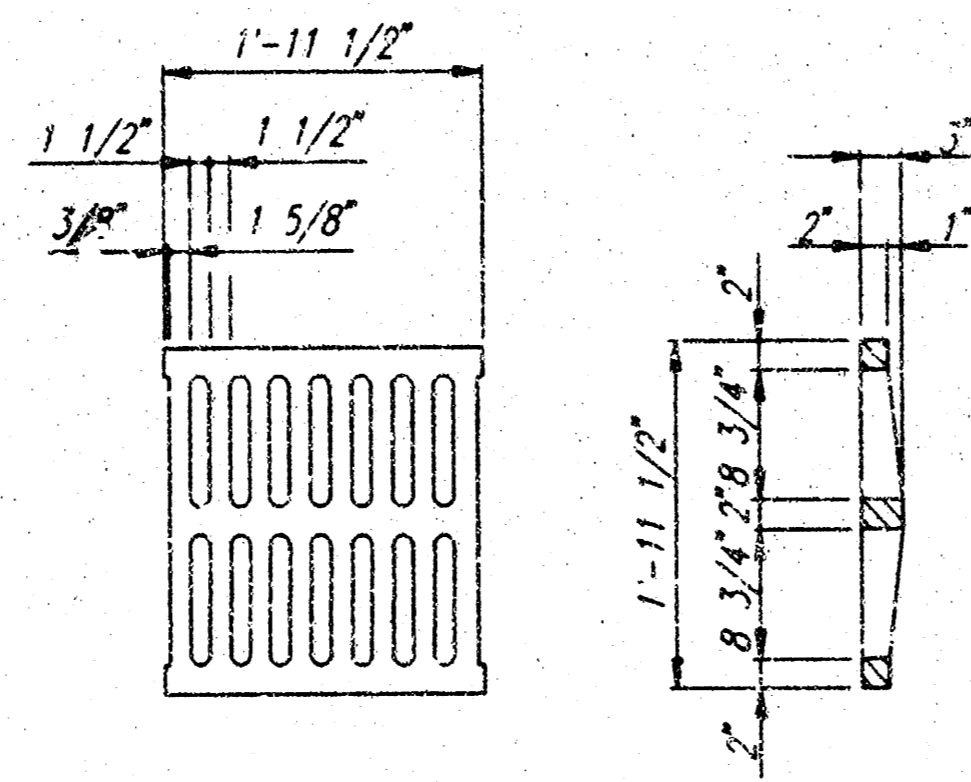


SECTION B-B

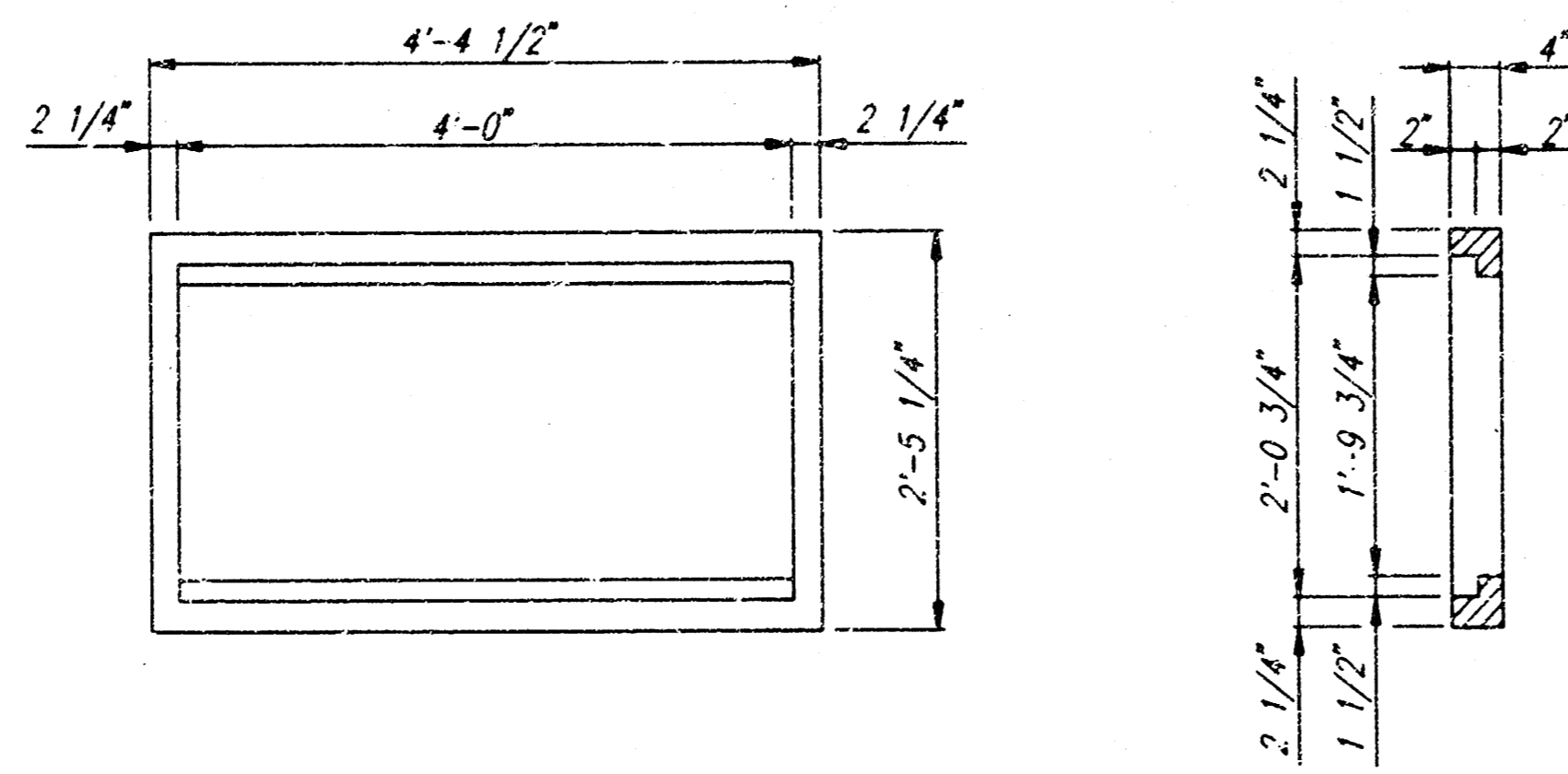


PLAN

STANDARD AREA INLET



GRATE DETAIL
 (Wt. = 100 lbs.)
 (2 Required)



FRAME DETAIL
 (Wt. = 460 lbs.)

GENERAL NOTES

CONCRETE SHALL BE 3000 PSI 28-DAY STRENGTH. ALL EXPOSED EDGES SHALL BE FINISHED WITH AN APPROVED EDGING TOOL.

REINFORCING STEEL SHALL BE A MINIMUM GRADE 40, A.S.T.M. A615. ALL DIMENSIONS RELATIVE TO PLACEMENT OF REINFORCING ARE TO THE CENTERLINE OF BARS UNLESS OTHERWISE NOTED.

INLET CASTINGS SHALL BE MANUFACTURED USING GOOD QUALITY GRAY IRON CONFORMING TO CLASS 30 OF A.S.T.M. DESIGNATION A-18. DIMENSIONS AND WEIGHTS SHOWN ON THE DETAILED DRAWINGS SHALL BE CONSIDERED AS MINIMUM REQUIREMENTS AND ANY DEVIATIONS FROM THE DIMENSIONS SHOWN MUST BE SPECIFICALLY APPROVED. THE FINISHED CASTINGS SHALL BE OF UNIFORM QUALITY, FREE FROM BLOWHOLES, POROSITY, HARD SPOTS, SHRINKAGE DISTORTIONS OR OTHER EFFECTS.

MASONRY WALLS SHALL BE CONSTRUCTED IN A WORKMANLIKE MANNER. ONLY SEWER BRICK MAY BE USED.

INLET FLOOR SHALL BE SHAPED WITH UNREINFORCED CONCRETE (8 SACK SAND MIX) TO CREATE FLOW CHANNELS AND TO INCREASE HYDRAULIC EFFICIENCY SUCH THAT THE INLET WILL BE SELF CLEANING BETWEEN ALL INLET AND/OR OUTLET PIPES.

EXISTING PIPES ENTERING STRUCTURE SHALL BE CENTERED ON INSIDE FACE OF WALL, AND SHALL BE CUT FLUSH WITH THE INSIDE FACE WALL.

PRECAST CONCRETE INLET MAY BE USED IN LIEU OF MASONRY, AS SHOWN, SUBJECT TO APPROVAL OF SHOP DRAWINGS BY THE ENGINEER.

EROSION REPAIR S.E. CORNER OF
 MASTER MODEL BUILDING
 AREA INLET DETAILS
 BOEING COMMERCIAL AIRPLANE GROUP
 WICHITA KANSAS

PROFESSIONAL ENGINEERING CONSULTANTS
 PROFESSIONAL ASSOCIATION
 13 South Topeka / (316) 262-2691
 Wichita, Kansas 67202
 Job No. 36-54400-50-196
 Drawn by MME
 Check by DEP

SYMBOL	DATE	BY	APPROVED

C.O.W. PROJ. NO. PPS (607661)
 Project No. 6C-6092-00
 MICRO FILM YES NO Sheet C4
 PLANT ENGINEERING CONTACT: Jerry Puckett 526-1894
 Drawing No. 105K-104-5

