

**PRIVATE
CONSTRUCTION PLANS FOR
STORM WATER SEWER IMPROVEMENTS
TO SERVE
VOLVO DEALERSHIP
GORGES & COMPANY
MEDITERRANEAN PLAZA, LOT 7, BLOCK 4
PROJECT NO. 679 PPS (607861)**

APPROVED AS NOTED
BY CITY ENGINEER OF WICHITA

SANITARY SEWERS _____
STORM SEWERS _____
DRAINWAY APPROACHED _____
WATER MAINS _____
PAVING _____

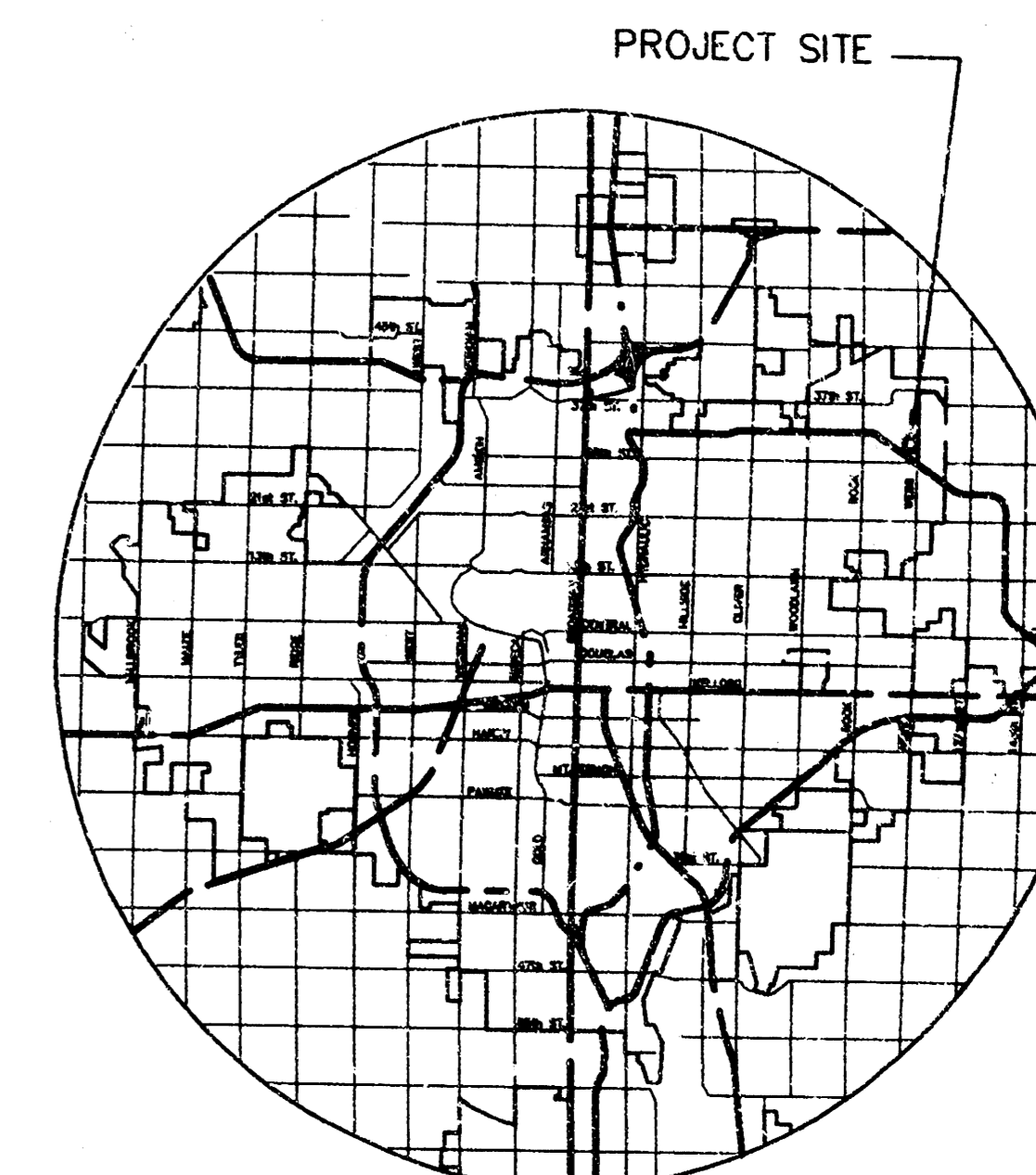
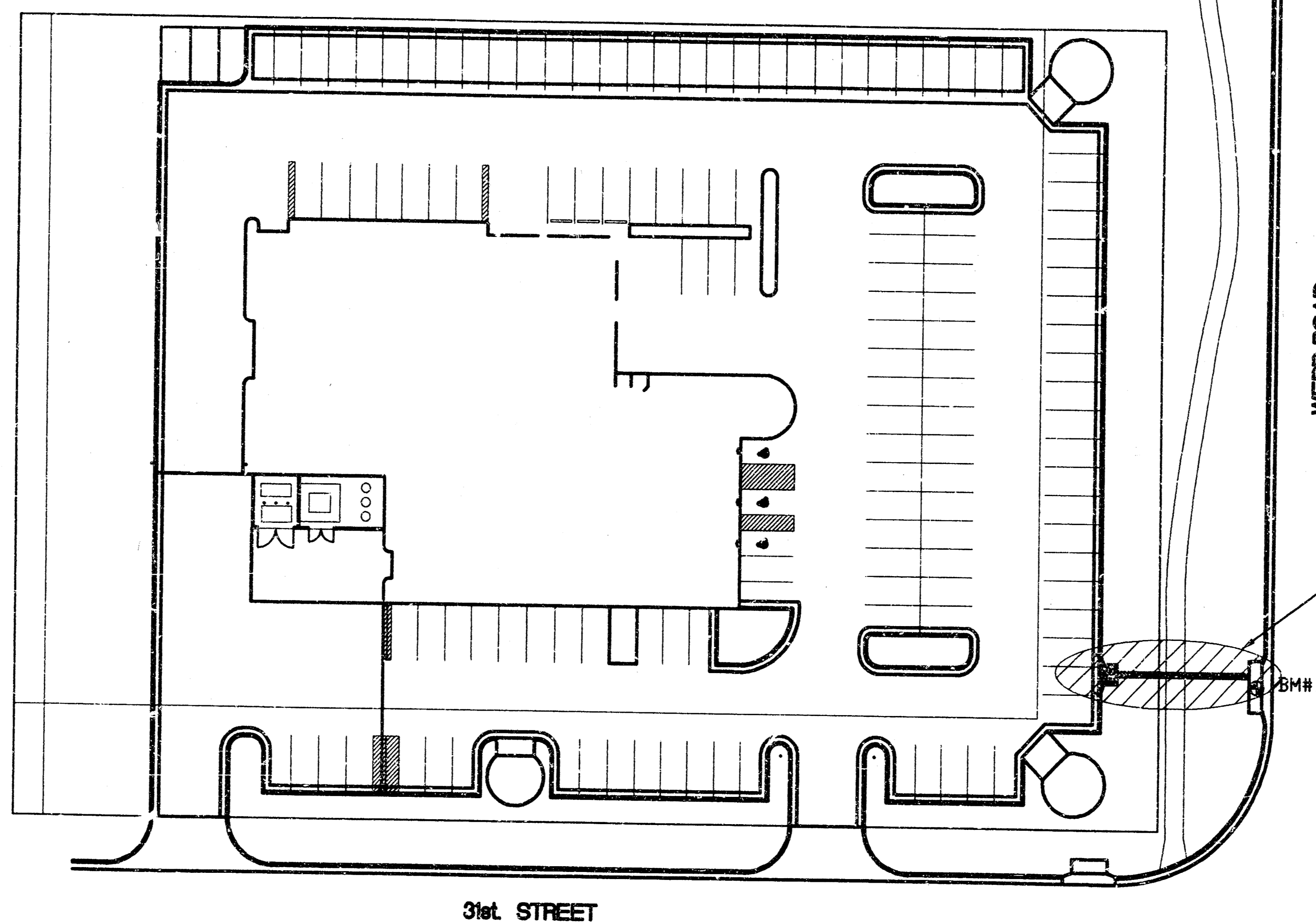
NOTE TO CONTRACTOR

INSPECTION AND TESTING FOR THIS PROJECT IS TO BE PROVIDED BY A LICENSED CONSULTING ENGINEERING FIRM UNDER CONTRACT WITH THE OWNER/DEVELOPER. SAID INSPECTION TO BE IN ACCORDANCE WITH THE CITY OF WICHITA STANDARD CONSTRUCTION ENGINEERING PRACTICES AND CERTIFIED BY A LICENSED PROFESSIONAL ENGINEER. NO WORK SHALL BE PERFORMED IN DEDICATED EASEMENTS OR THE PUBLIC RIGHT-OF-WAY BY THE CONTRACTOR WITHOUT SUCH INSPECTION NOR SHALL ANY WORK BE COMMENCED IN DEDICATED EASEMENTS OR PUBLIC RIGHT-OF-WAY WITHOUT WRITTEN AUTHORIZATION BY THE CITY ENGINEER.

GENERAL NOTES

- THE CONTRACTOR SHALL BE RESPONSIBLE FOR PRESERVING PROPERTY IRONS. THE CONTRACTOR SHALL BE REQUIRED TO RE-ESTABLISH ANY PROPERTY IRONS WHICH ARE DAMAGED OR DESTROYED BY THE CONSTRUCTION OPERATION. SUCH IRONS SHALL BE RE-ESTABLISHED BY A LICENSED LAND SURV. (C.S.) IN ACCORDANCE WITH STATE LAWS.
- ALL ELEVATIONS SHOWN ON THESE PLANS ARE ON U.S.G.S. DATUM.
- UNDERGROUND UTILITY SERVICE LINES AND OVERHEAD UTILITY POLES AND LINES ARE TO BE ADJUSTED AS NECESSARY BY OTHERS PRIOR TO CONSTRUCTION, UNLESS THE PLANS SPECIFICALLY IDENTIFY A UTILITY TO BE ADJUSTED BY ITS OWNER DURING CONSTRUCTION. EXISTING UTILITY LOCATIONS, AS SHOWN ON THESE PLANS, REPRESENT THE BEST INFORMATION OBTAINABLE FOR DESIGN. LOCATION INFORMATION HAS BEEN OBTAINED FROM THE VARIOUS UTILITY COMPANIES, AND IS EITHER FROM CITY PLANS, COMPANY RECORDS, DRAWINGS, OR COMPANY PROVIDED FIELD LOCATIONS. THE CONTRACTOR WILL BE REQUIRED TO WORK AROUND EXISTING UTILITIES WHICH DO NOT CONFLICT WITH PROPOSED CONSTRUCTION. IF ADDITIONAL UTILITY LINES ARE ENCOUNTERED DURING CONSTRUCTION, THEIR OWNERS SHOULD BE IMMEDIATELY ADVISED, SO THAT NECESSARY ADJUSTMENTS OR RELOCATIONS CAN BE MADE. THE CONTRACTOR SHALL LOCATE ALL UTILITY LINES PRIOR TO EXCAVATION.
- THE CONTRACTOR SHALL PROVIDE A MINIMUM ADVANCED NOTICE OF FORTY-EIGHT (48 HOURS) TO ALL THE FOLLOWING COMPANIES PRIOR TO EXCAVATION:

KANSAS ONE CALL	1-800-344-7233 OR 687-2470 (WICHITA)
KC&E (ELECTRIC)	264-1411
KC&E (GAS DISTRIBUTION)	832-0012
MULTIMEDIA CABLEVISION	262-0661
SOUTHWESTERN BELL TELEPHONE COMPANY	1-571-2115 (REPAIR)
CITY OF WICHITA WATER AND SEWER	268-4908
CITY OF WICHITA STORM WATER UTILITY	268-4498
- ALL ADJACENT BUILDINGS, STRUCTURES, PARKING LOTS, DRIVES, STREET PAVEMENTS, AND APPURTENANCES OTHER THAN SHOWN ON THESE PLANS FOR REPLACEMENT SHALL BE PROTECTED FROM DAMAGE DURING CONSTRUCTION. ITEMS DAMAGED BEYOND CONSTRUCTION LIMITS SHALL BE REMOVED AND REPLACED BY THE CONTRACTOR AT NO COST TO THE CITY.
- TREES AND SHRUBS IN THE CONSTRUCTION AREA WHICH ARE IN DIRECT CONFLICT WITH THE PROPOSED CONSTRUCTION SHALL BE REMOVED BY THE CONTRACTOR. TREES AND SHRUBS DESIGNATED BY THE CITY TO REMAIN SHALL BE SAVED AND PROTECTED FROM DAMAGE.
- RUBBLE FROM THE REMOVAL OF MISCELLANEOUS STRUCTURES AND EXCESS EXCAVATION WHICH IS TO BE WASTED SHALL BE DISPOSED OF ON SITES TO BE PROVIDED BY THE CONTRACTOR. THESE SITES SHALL BE APPROVED BY THE ENGINEER AS TO SUITABILITY, APPEARANCE AND SITE LOCATION. LOCATIONS THAT, IN THE OPINION OF THE ENGINEER, WILL LEAVE AN UNSIGHTLY APPEARANCE WILL NOT BE APPROVED. ALL DISPOSAL SITES MUST BE APPROVED BY THE KANSAS DEPARTMENT OF HEALTH AND ENVIRONMENT. MATERIAL EITHER STOCKPILED OR DISPOSED OF IN A FLOOD PLAIN WOULD REQUIRE A KANSAS DEPARTMENT OF AGRICULTURE PERMIT. ANY MATERIAL DUMPED IN THE WATERS OF THE UNITED STATES OR WETLANDS IS SUBJECT TO U.S. ARMY, CORPS OF ENGINEERS PERMITTING REGULATIONS. ANY MATERIAL BURIED OR STOCKPILED BEYOND APPROVED CONSTRUCTION LIMITS WOULD REQUIRE ADDITIONAL ARCHAEOLOGICAL INVESTIGATIONS UNLESS BURIED IN A PREVIOUSLY APPROVED BORROW LOCATION.
- ALL DISTURBED AREA SHALL BE SEEDING/MULCHED PER AR 78.



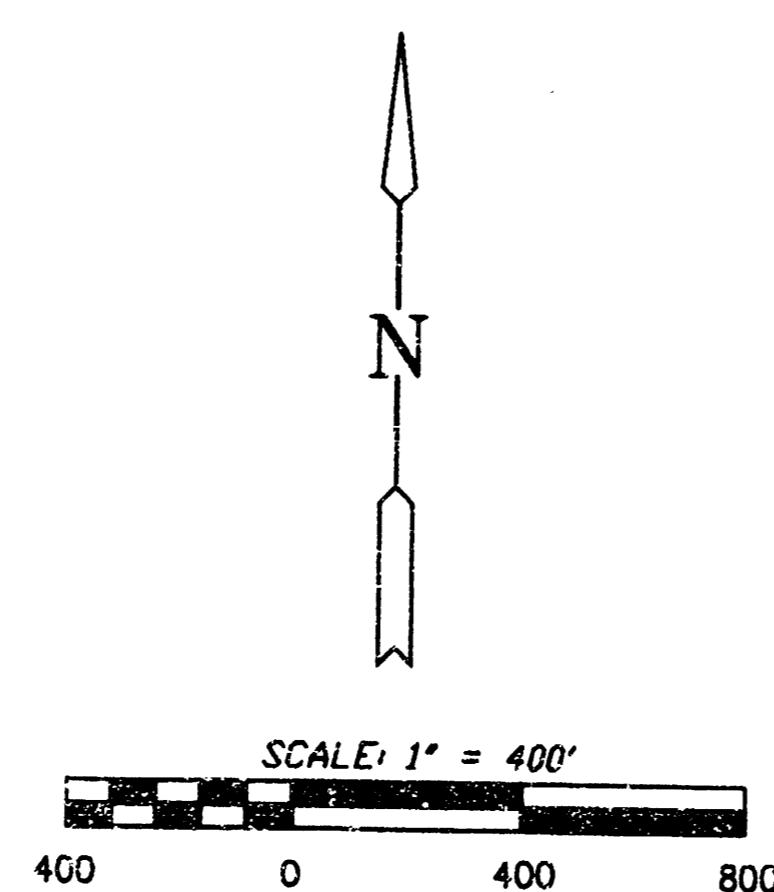
INDEX TO DRAWINGS

SHEET NO.	DESCRIPTION
1	TITLE SHEET
2	LINE 1 PLAN & PROFILE
3	STD. TYPE 1-A CURB INLET DETAILS

*BOOKED
2-17-97
MCG
D-351*

BENCHMARKS

- BM #1 "□" CUT ON CURB INLET AT NORTHWEST CURB RETURN OF WEBB RD. AND 31ST STREET NORTH. ELEV. = 1419.20
- BM #2 SPIKE IN PP ON SOUTHWEST CORNER OF WEBB RD. AND 31ST STREET NORTH. ELEV. = 1420.84



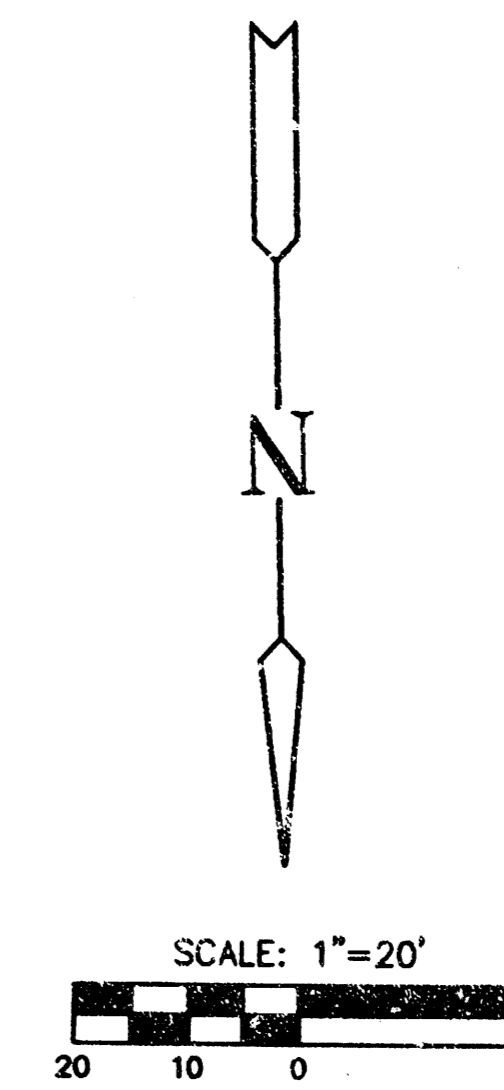
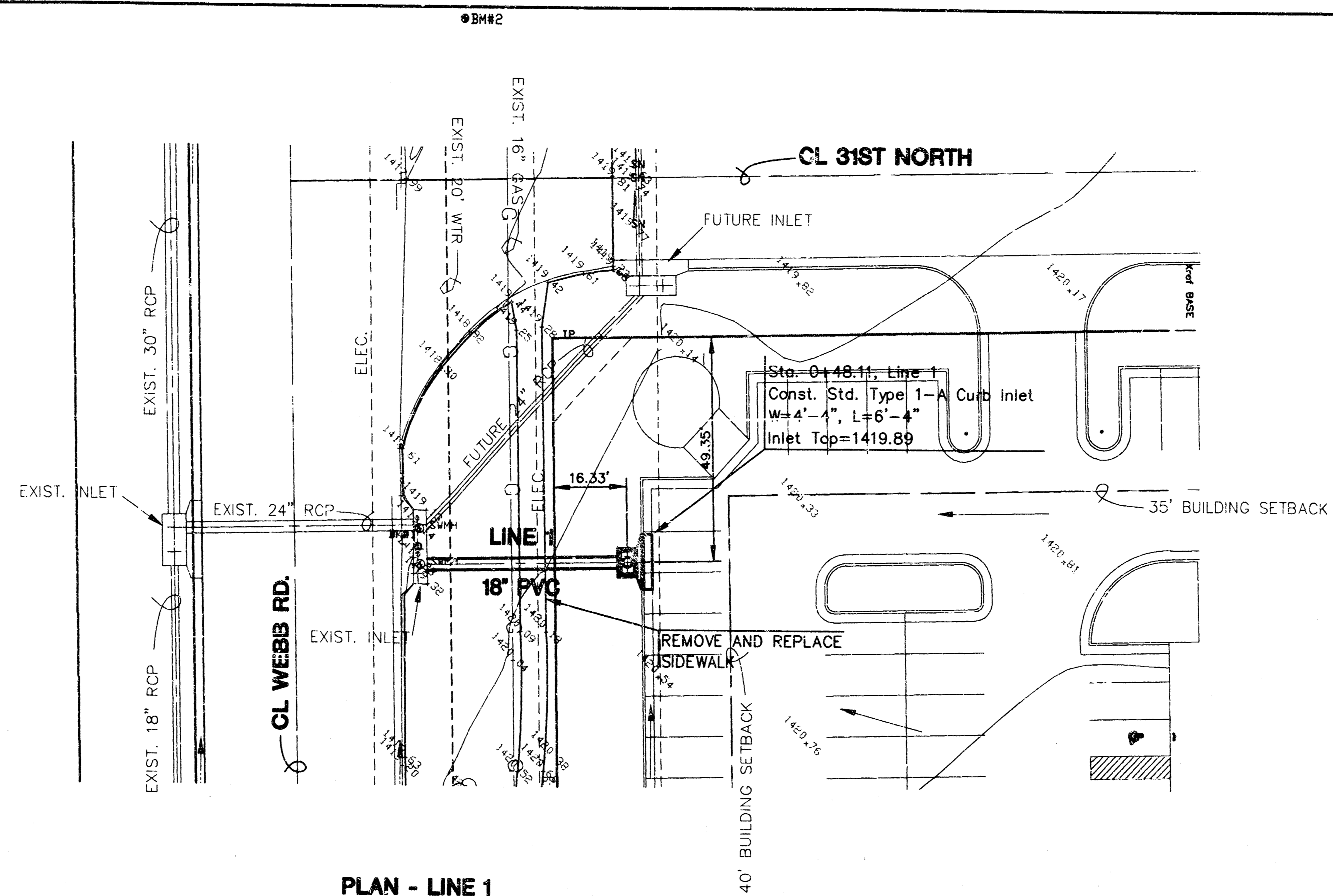
BM#2



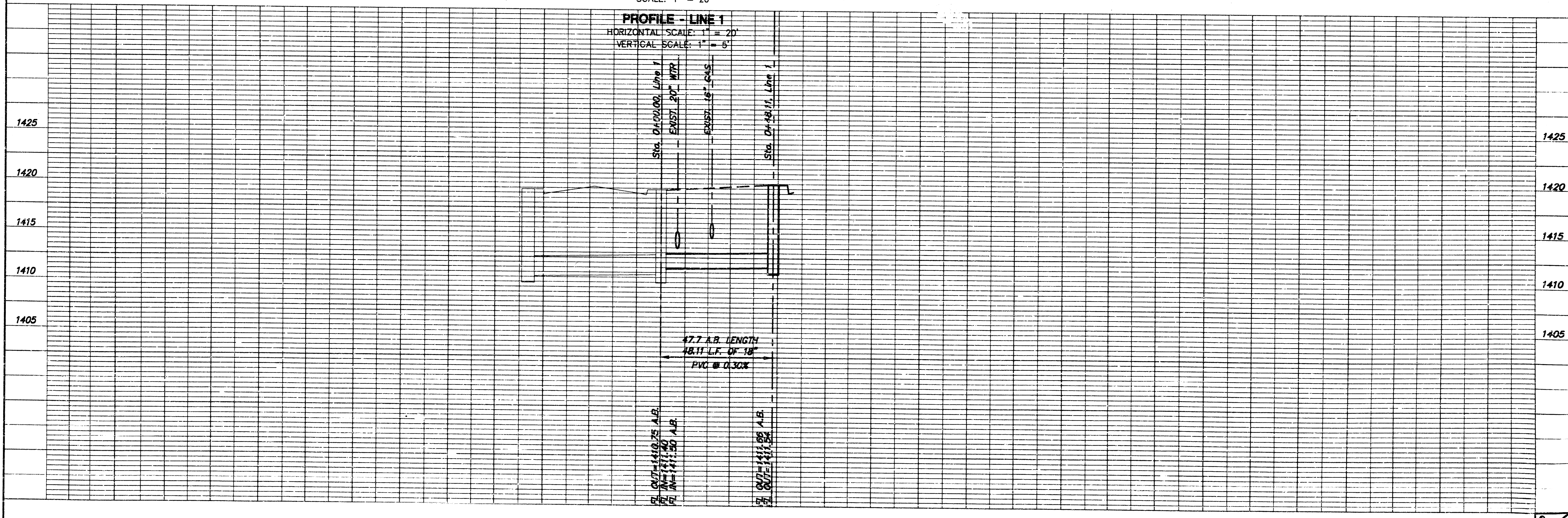
AS BUILT 3-3-97

<p>MID-KANSAS ENGINEERING CONSULTANTS, INC. 411 N WEBB ROAD WICHITA, KS. 67206 316-664-9600</p>	VOLVO DEALERSHIP	
	PROJECT NAME	
STORM WATER SEWER PLANS		
SHEET TITLE		
DESIGN BY: PAF	CHECKED BY: PAF	DATE: JANUARY, 1997
	DRAWN BY: GJA	JOB NO. 119
		1 / 3 SHEET OF

**VOLVO DEALERSHIP
GORGES & COMPANY
STORM SEWER
LINE 1**



PROFILE - LINE 1
HORIZONTAL SCALE: 1" = 20'
VERTICAL SCALE: 1" = 5'



16 OCT 1997 11:56 AM 16 OCT 1997 11:56 AM

