

STORM WATER DRAIN TO SERVE LARK 4TH ADDITION

Private Project No.
698PPS (607861)

CITY OF WICHITA, KANSAS
Michael E. Lindebak City Engineer
March, 1997

Earthwork Quantities:

Excavation	78,625 C.Y.
Stockpile Excavation	19,725 C.Y.
Compacted Fill (90%)	88,880 C.Y.
Compacted Fill (95%)	4,160 C.Y.
Compacted Liner (95%)	5,310 C.Y.

General Notes

1. Contractor will be required to provide notice to utility companies a minimum of twenty-four (24) hours prior to any excavation, as follows:

- Kansas One-Call 687-2470
- The Contractor must notify the following in case of an emergency:
- Cablevision 262-4270
 - or 263-2061
 - K.P.L. Gas Service Company 383-8650
 - Kansas Gas & Electric Company 383-8600
 - Arkia Gas Company 942-8350
 - Southwestern Bell Telephone Company 1-571-2611
 - City of Wichita Water Department 268-4308
 - City of Wichita Sewer Maintenance 268-4071
 - Central Kansas Railway 263-3113

2. Trees and shrubs in public right-of-way which are in direct conflict with proposed new construction shall be removed by the Contractor with the Engineer's approval. Trees and shrubs which are not in direct conflict with proposed new construction shall be saved and protected from damage.

3. Underground utility service lines and overhead utility pole lines are to be adjusted as necessary by others prior to construction unless the plans specifically call for their adjustment by the Contractor or unless the plans specifically identify a utility to be adjusted by its owner during construction. Existing utilities and their location, as shown on the plans, represent the best information obtainable for design. The Contractor will be required to work around existing utilities within the right-of-way which do not conflict with proposed construction.

4. The Contractor shall clear all street right-of-ways of any debris and vegetation prior to placement of fill material. Lot areas may be filled without removal of existing vegetation.

5. The Developer shall be responsible for providing an NPDES Storm Water Discharge Permit. The Contractor shall use best management practices (BMP's) to address erosion control.

6. All 'Reserve' areas are to be seeded, fertilized, and mulched as follows:
SEED--Kansas Premium Fescue Blend--3#/1000 Sq. Ft. (Equal parts of Olympic II, Bonanza, Apache, and Monarch Fescue varieties)
FERTILIZER--16-20-6 Ratio--4#/1000 Sq. Ft. or approved equals
MULCH--2 tons of Prairie Hay per Acre
All disturbed areas are to be seeded and mulched as follows:
SEED--Rye Grass (PLS)--3#/1000 Sq. Ft. and Kansas Premium Fescue Blend--3#/1000 Sq. Ft.
MULCH--2 tons of Prairie Hay per Acre
The Developer shall be responsible for all seeding.

7. Rubble from the removal of miscellaneous structures, including trees and shrubs which are to be wasted shall be disposed of on sites to be provided by the Contractor. The disposal shall be approved by the Engineer as to suitability, appearance and site location. Locations that, in the opinion of the Engineer, will leave an unsightly appearance will not be approved. All disposal sights must be approved by the Kansas Department of Health and Environment. Material either stockpiled or disposed of in a flood plain would require a Kansas State Board of Agriculture permit. Any material dumped in waters of the United States or wetlands is subject to U.S. Corps. of Engineers permitting regulations. Any material buried or stockpiled beyond approved construction limits would require additional archaeological investigations unless buried in a previously approved borrow location.

8. All excess excavation shall be spread within the specified construction area at locations to be determined by the Engineer. Stock-piled material at the location of the proposed excavation shall also be spread within the specified construction area at locations to be determined by the Engineer prior to excavation of the proposed pond.

INDEX of SHEETS

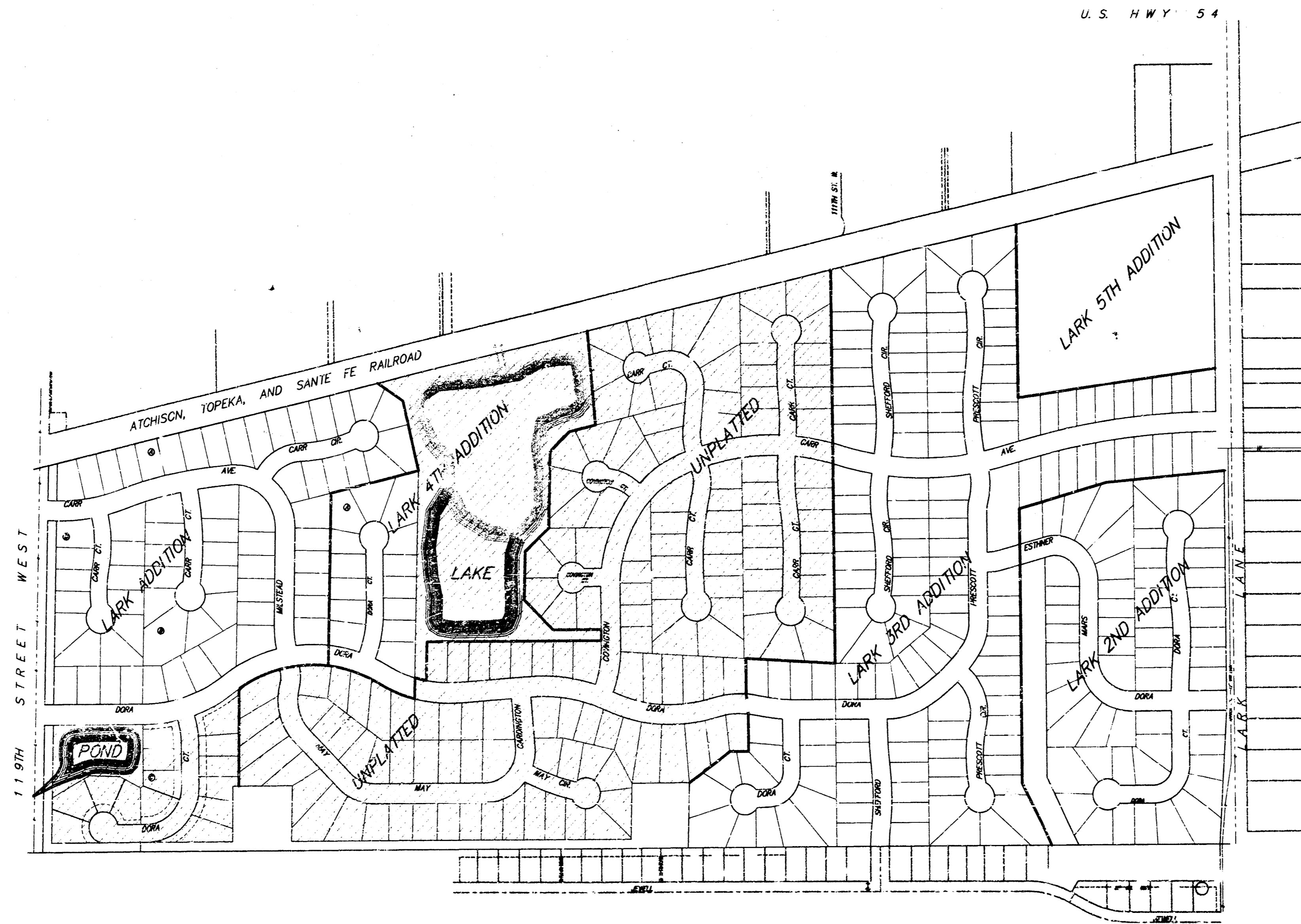
COVER	1
LAKE LAYOUT & STAKING PLAN	2
POND LAYOUT & STAKING PLAN	3
GRADING PLAN	4
GRADING COORDINATES	5
HEADWALL DETAIL	6
LARK 4TH ADDITION PLAT	7

Benchmarks:

R.R. Spike in East Side of P.P.
Located 112.5' North of the
North R/W of Dora and 41.5'
East of the C of 119th Street
West.
Elevation = 145.26 (City Datum)

"□" On Top of Curb Located
on the East Side of Shefford
12.5' South of the North Line
of Pawnee Mesa Addition.
Elevation = 143.56 (City Datum)

BOOKED
3-5-98
MCG
D-334



Project Area

Construction Area

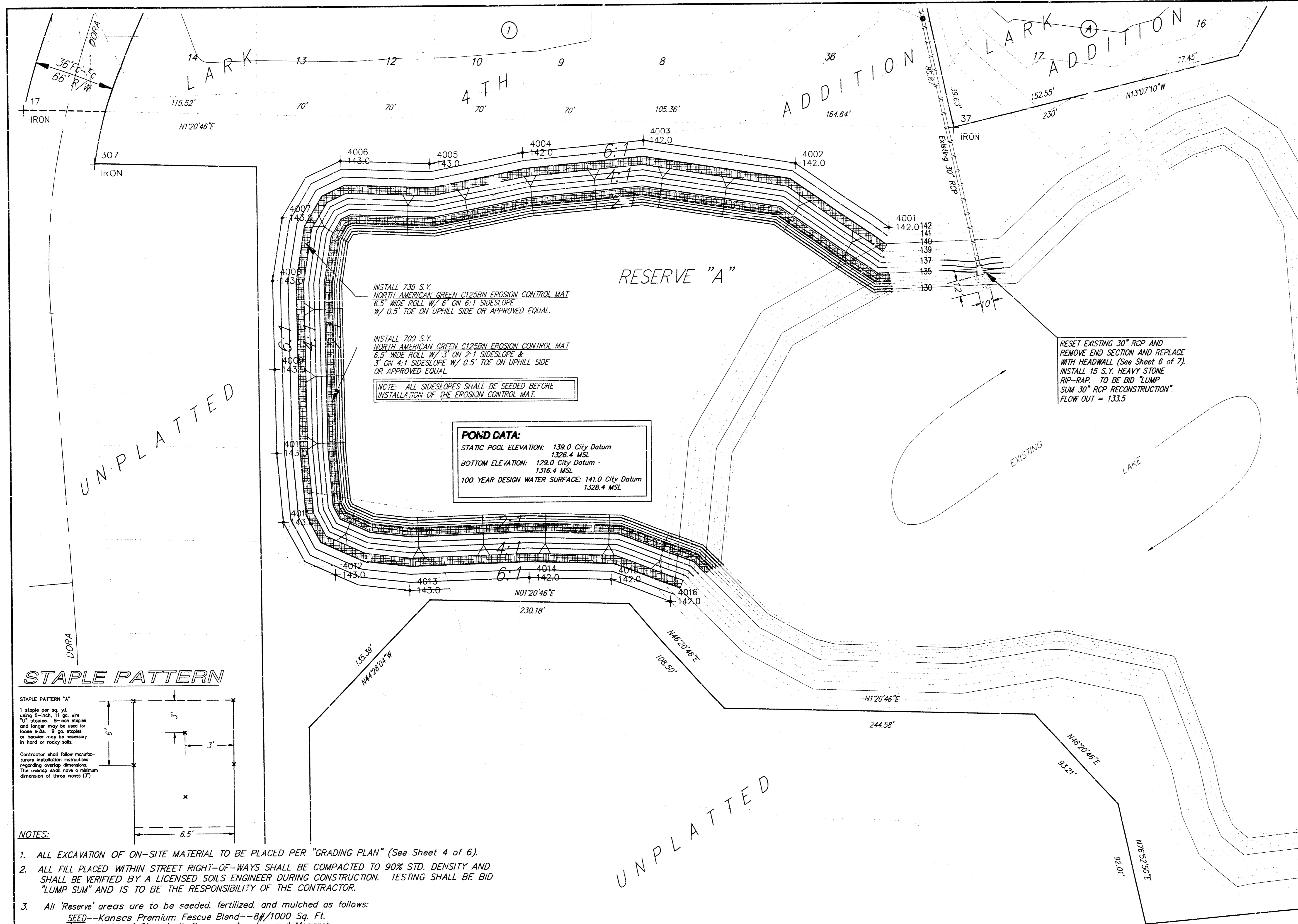
**APPROVED AS NOTED
BY CITY ENGINEER OF WICHITA**

Sanitary Sewers _____
Storm Sewers 4/9/97 URH
Driveway Approaches _____
Water Mains _____
Paving _____

NOTE TO CONTRACTORS

Inspection and testing for this project is to be provided by a Licensed Consulting Engineering Firm under contract with the Owner/Developer. Said inspection to be in accordance with the City of Wichita standard construction engineering practices and certified by a Licensed Professional Engineer. No work shall be performed in dedicated easements or public right-of-way by the Contractor without such inspection nor shall any work be commenced without written authorization by the City Engineer. All Construction and Materials shall comply with the City of Wichita Specifications and Standards (on file and available in the City Engineer's Office).



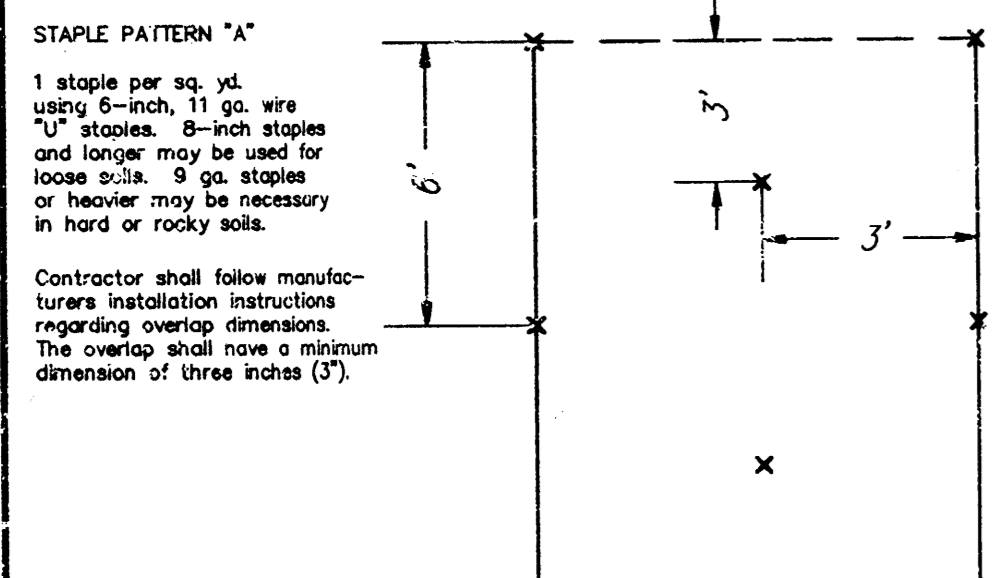


LARK SWD - PHASE II STAKING COORDINATES

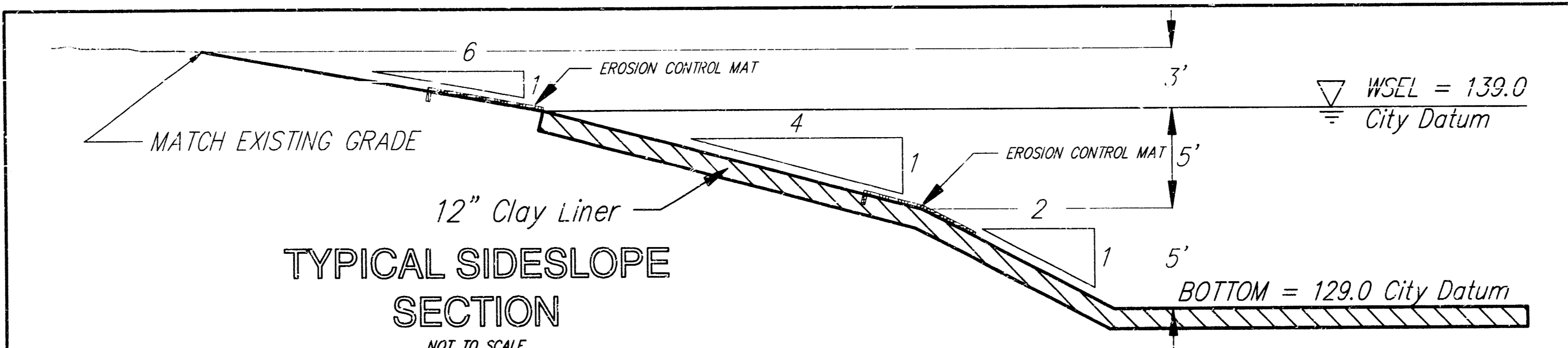
Project: Lark#2
 Point statistics:
 Starting point number: 1
 Max point number used: 4016
 Min point number used: 4
 Current point number: 4017

Point	Northing	Easting	Elevation	Description
17	20493.0230	21331.4160	0.0	IRON
37	21226.1460	21348.6420	0.0	IRON
307	20551.8800	21371.8100	0.0	IRON
4001	21174.3257	21422.7213	142.0	
4002	21100.6374	21374.3429	142.0	
4003	20981.1140	21366.5225	142.0	
4004	20885.7252	21365.1453	142.0	
4005	20812.8596	21372.9218	143.0	
4006	20742.3393	21370.4465	143.0	
4007	20696.6796	21412.6556	143.0	
4008	20688.9737	21459.6856	143.0	
4009	20690.1641	21525.9827	143.0	
4010	20691.2855	21588.4399	143.0	
4011	20695.9090	21640.9958	143.0	
4012	20736.3712	21679.5517	143.0	
4013	20793.3237	21691.4815	143.0	
4014	20888.5984	21682.4627	142.0	
4015	20952.9571	21684.1873	142.0	
4016	21000.6515	21700.8579	142.0	

STAPLE PATTERN



- NOTES:**
- ALL EXCAVATION OF ON-SITE MATERIAL TO BE PLACED PER "GRADING PLAN" (See Sheet 4 of 6).
 - ALL FILL PLACED WITHIN STREET RIGHT-OF-WAYS SHALL BE COMPACTED TO 90% STD. DENSITY AND SHALL BE VERIFIED BY A LICENSED SOILS ENGINEER DURING CONSTRUCTION. TESTING SHALL BE BID "LUMP SUM" AND IS TO BE THE RESPONSIBILITY OF THE CONTRACTOR.
 - All 'Reserve' areas are to be seeded, fertilized, and mulched as follows:
SEED—Kansas Premium Fescue Blend—8#/1000 Sq. Ft.
 (Equal parts of Olympic II, Bonanza, Apache, and Monarch Fescue varieties)
FERTILIZER—16-20-6 Ratio—4#/1000 Sq. Ft. or approved equals
MULCH—2 tons of Prairie Hay per Acre
 All disturbed areas are to be seeded and mulched as follows:
SEED—Rye Grass (PLS)—3#/1000 Sq. Ft. and
 Kansas Premium Fescue Blend—3#/1000 Sq. Ft.
MULCH—2 tons of Prairie Hay per Acre
 The Developer shall be responsible for all seeding.
 - POND BOTTOM AND SIDESLOPES BELOW STATIC POOL ELEVATION SHALL BE OVER-EXCAVATED 1' AND A 1' CLAY LINER SHALL BE COMPACTED TO 95% STD. DENSITY. THE PLASTICITY INDEX (P.I.) SHALL BE AT LEAST 20. THE COMPACTION AND P.I. SHALL BE VERIFIED DURING CONSTRUCTION BY A LICENSED SOILS ENGINEER TO BE PAID FOR BY THE CONTRACTOR AND BID "LUMP SUM".
 - CONTRACTOR TO BE RESPONSIBLE FOR THE REMOVAL OF ALL ON-SITE DEBRIS.
 - ALL EXISTING STOCK-PILED MATERIAL SHALL BE DISTRIBUTED PER THE "GRADING PLAN" (See Sheet 4 of 6).



**LARK 4TH ADDITION
LAKE PLAN**
WITH STAKING COORDINATES

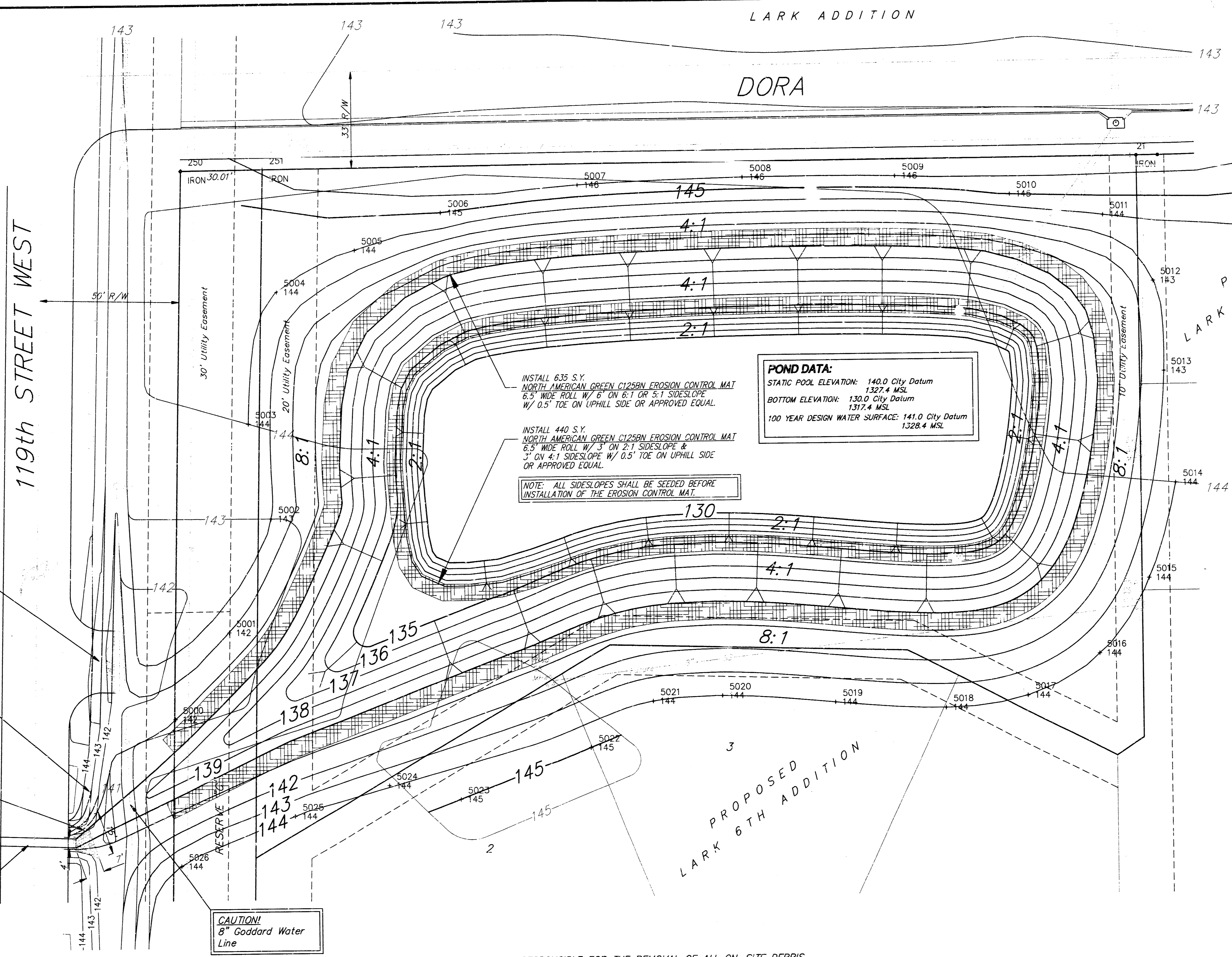
BAUGHMAN COMPANY P. A.
ENGINEERING, SURVEYING, & PLANNING
316-262-7271 • 315 ELLIS • WICHITA, KANSAS 67211

PROJECT NUMBER
698PPS (807861)

DESIGN NBW/JDS	DRAWN JDS	APPROVED	DATE 4-27	SCALE 1" = 40'	SHEET 2 OF 7
-------------------	--------------	----------	--------------	-------------------	-----------------------

Benchmark
 R.R. Spike in East Side of P.P.
 Located 112.5' North of the
 North R/W of Dora and 41.5'
 East of the C of 119th Street
 West.
 Elevation = 145.26 (City Datum)

"□" On Top of Curb Located
 on the East Side of Shefford
 12.5' South of the North Line
 of Pawnee Mesa Addition.
 Elevation = 143.56 (City Datum)



POND DATA:
 STATIC POOL ELEVATION: 140.0 City Datum
 1327.4 MSL
 BOTTOM ELEVATION: 130.0 City Datum
 1317.4 MSL
 100 YEAR DESIGN WATER SURFACE: 141.0 City Datum
 1328.4 MSL

NOTE: ALL SIDESLOPES SHALL BE SEEDED BEFORE
 INSTALLATION OF THE EROSION CONTROL MAT.

Remove Existing Drive and
 24" RCP and Re-Grade
 Ditch Section to Match
 Existing Ditch. To Be Bid
 "Site Clearing & Grubbing".

CAUTION!
 Koch High Pressure
 Gas Line

Install 7 S.Y. Heavy
 Stone Rip Rap

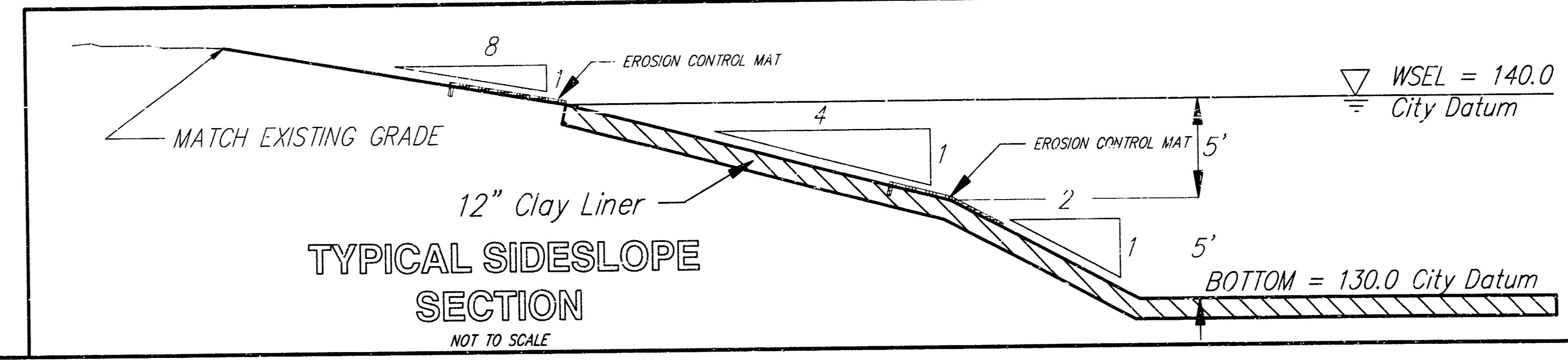
Ex. 3' X 3' Box Culvert
 140.16 = Flow (In & Out)

CAUTION!
 8" Goddard Water
 Line

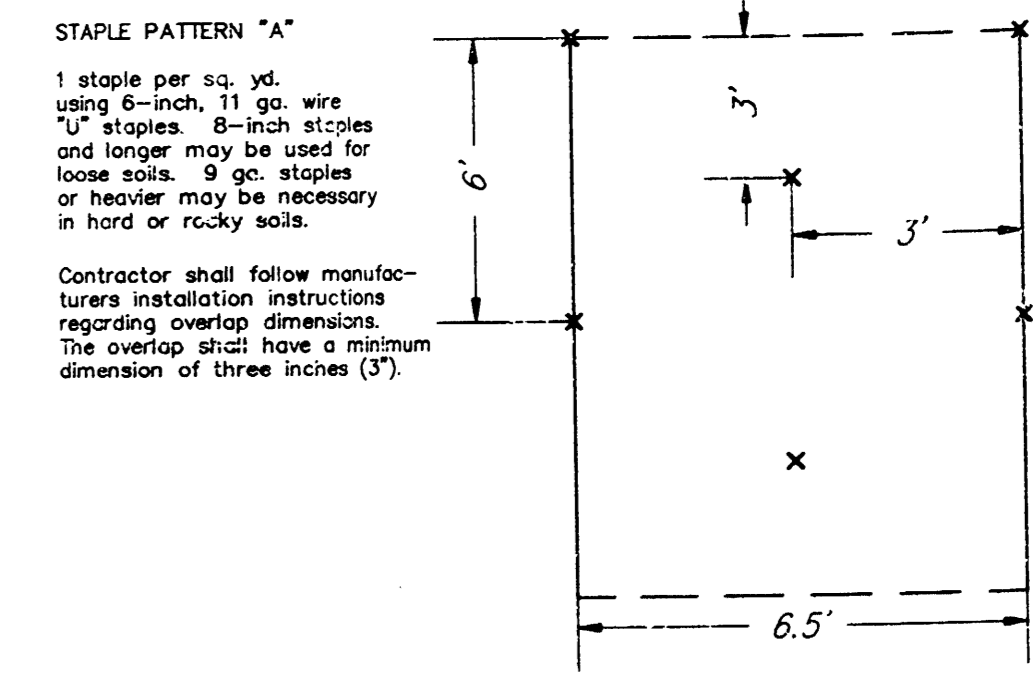
NOTES:

- ALL EXCAVATION OF ON-SITE MATERIAL TO BE PLACED PER "GRADING PLAN" (See Sheet 4 of 6).
- ALL FILL PLACED WITHIN STREET RIGHT-OF-WAYS SHALL BE COMPACTED TO 90% STD. DENSITY AND SHALL BE VERIFIED BY A LICENSED SOILS ENGINEER DURING CONSTRUCTION. TESTING SHALL BE BID "LUMP SUM" AND IS TO BE THE RESPONSIBILITY OF THE CONTRACTOR.
- All "Reserve" areas are to be seeded, fertilized, and mulched as follows:
 SEED--Kansas Premium Fescue Blend--8#/1000 Sq. Ft.
 (Equal parts of Olympic II, Bonanza, Apache, and Monarch Fescue varieties)
 FERTILIZER--16-20-6 Ratio--4#/1000 Sq. Ft. or approved equals
 MULCH--2 tons of Prairie Hay per Acre
 All disturbed areas are to be seeded and mulched as follows:
 SEED--Rye Grass (PLS)--3#/1000 Sq. Ft. and
 Kansas Premium Fescue Blend--3#/1000 Sq. Ft.
 MULCH--2 tons of Prairie Hay per Acre
 The Developer shall be responsible for all seeding.
- POND BOTTOM AND SIDESLOPES BELOW STATIC POOL ELEVATION SHALL BE OVER-EXCAVATED 1' AND A 1' CLAY LINER SHALL BE COMPACTED TO 95% STD. DENSITY. THE PLASTICITY INDEX (P.I.) SHALL BE AT LEAST 20. THE COMPACTION AND P.I. SHALL BE VERIFIED DURING CONSTRUCTION BY A LICENSED SOILS ENGINEER TO BE PAID FOR BY THE CONTRACTOR AND BID "LUMP SUM".

- CONTRACTOR TO BE RESPONSIBLE FOR THE REMOVAL OF ALL ON-SITE DEBRIS.
- ALL EXISTING STOCK-PILED MATERIAL SHALL BE DISTRIBUTED PER THE "GRADING PLAN" (See Sheet 4 of 6).



STAPLE PATTERN



LARK 4TH ADDITION POND

Project: larkpnd3 Thu Mar 6 16:20:04 1997

Point statistics:
 Starting point number: 1
 Max point number used: 5026
 Min point number used: 21
 Current point number: 5027

Point	Current Coordinate Listing (All)			Description
	Northing	Easting	Elevation	
21	20411.9680	20399.7900	0.0	IRON
250	20410.2980	20059.6550	0.0	IRON
251	20410.4450	20089.6660	0.0	IRON
5000	20223.8685	20055.6587	142.0	
5001	20253.1431	20075.7506	142.0	
5002	20291.6521	20091.4736	143.0	
5003	20323.9461	20085.5167	144.0	
5004	20368.6832	20094.3250	144.0	
5005	20382.6104	20121.8859	144.0	
5006	20394.9398	20152.9454	145.0	
5007	20403.7743	20202.2548	146.0	
5008	20405.8972	20261.3077	146.0	
5009	20405.8062	20315.7005	146.0	
5010	20399.2169	20356.6431	145.0	
5011	20391.8578	20389.3815	144.0	
5012	20369.2041	20407.4768	143.0	
5013	20338.5514	20410.8455	143.0	
5014	20300.5663	20414.4730	144.0	
5015	20268.3325	20404.6654	144.0	
5016	20242.8955	20386.2064	144.0	
5017	20228.8950	20360.9789	144.0	
5018	20225.0417	20331.2454	144.0	
5019	20227.2904	20292.1851	144.0	
5020	20229.8987	20251.8759	144.0	
5021	20228.2974	20226.9163	144.0	
5022	20212.7693	20204.6828	145.0	
5023	20195.6769	20157.5904	145.0	
5024	20200.6252	20132.1260	144.0	
5025	20190.5131	20096.5147	144.0	
5026	20173.8776	20056.9704	144.0	

LARK 4TH ADDITION POND PLAN
 WITH STAKING COORDINATES

BAUGHMAN COMPANY P. A.
 ENGINEERING, SURVEYING, & PLANNING
 316-282-7271 • 315 ELLIS • WICHITA, KANSAS 67211

PROJECT NUMBER: **998PPS (607861)**

DESIGN: BIP DRAWN: TMO/DES APPROVED: DATE: 3-97 SCALE: 1"=20'

SHEET **3** OF **7**

Earthwork Quantities:

Excavation	78,625 C.Y.
Stockpile Excavation	19,725 C.Y.
Compacted Fill (90%)	88,880 C.Y.
Compacted Fill (95%)	1,160 C.Y.
Compacted Liner (95%)	5,310 C.Y.

Scale: 1" = 100'

Benchmark
 R.R. Spike in East Side of P.P.
 Located 112.5' North of the
 North R/W of Dora and 41.5'
 East of the C of 119th Street
 West.
 Elevation = 145.26 (City Datum)

"□" On Top of Curb Located
 on the East Side of Shefford
 12.5' South of the North Line
 of Pawnee Mesa Addition.
 Elevation = 143.56 (City Datum)

90% COMPACTION FILL AREA

95% COMPACTION FILL AREA

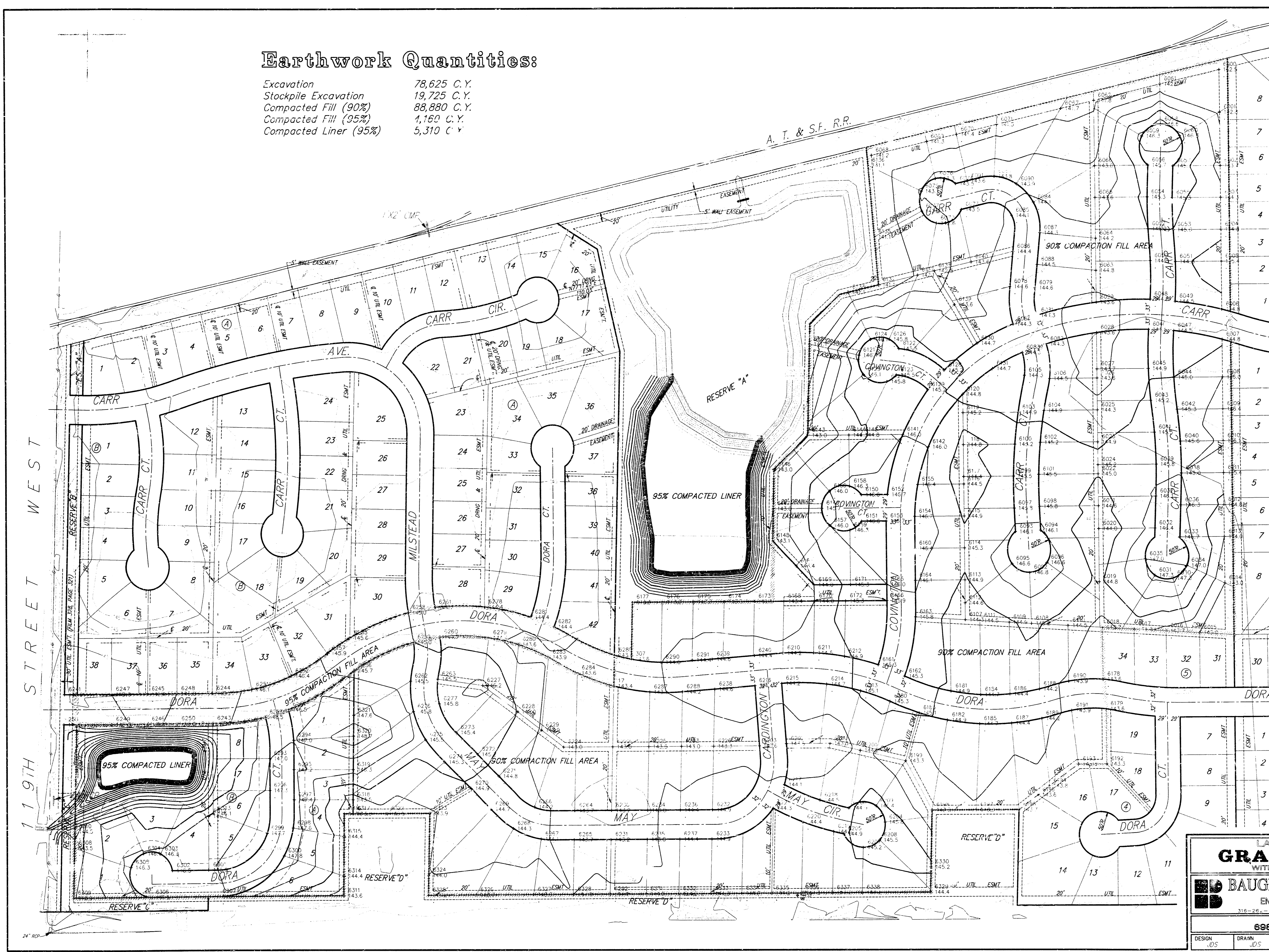
1	1
2	2
3	3
4	4
5	5
6	6
7	7
8	8
9	9
10	10
11	11
12	12
13	13
14	14
15	15
16	16
17	17
18	18
19	19
20	20
21	21
22	22
23	23
24	24
25	25
26	26
27	27
28	28
29	29
30	30
31	31
32	32
33	33
34	34
35	35
36	36
37	37
38	38
39	39
40	40
41	41
42	42
43	43
44	44
45	45
46	46
47	47
48	48
49	49
50	50
51	51
52	52
53	53
54	54
55	55
56	56
57	57
58	58
59	59
60	60
61	61
62	62
63	63
64	64
65	65
66	66
67	67
68	68
69	69
70	70
71	71
72	72
73	73
74	74
75	75
76	76
77	77
78	78
79	79
80	80
81	81
82	82
83	83
84	84
85	85
86	86
87	87
88	88
89	89
90	90
91	91
92	92
93	93
94	94
95	95
96	96
97	97
98	98
99	99
100	100

LARK 4TH ADDITION
GRADING PLAN
 WITH STAKING COORDINATES

BAUGHMAN COMPANY P.A.
 ENGINEERING, SURVEYING, & PLANNING
 316-25-7271 • 316-5118 • WICHITA, KANSAS 67212

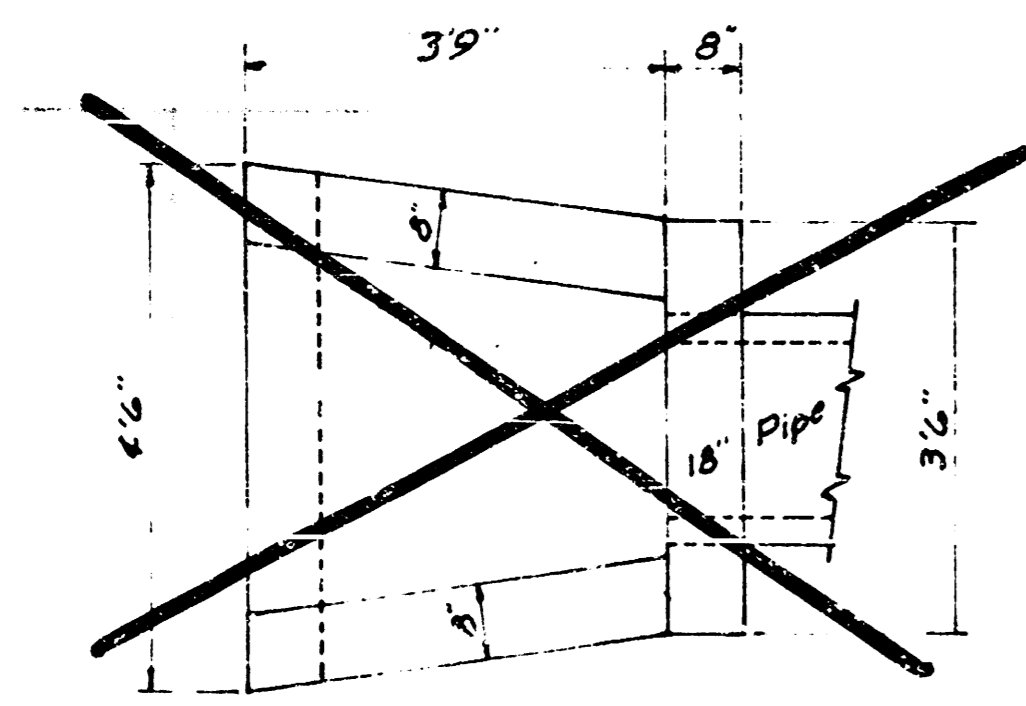
PROJECT NUMBER
698PPS (807861)

DESIGN .05 DRAWN .05 APPROVED DATE 3-97 SCALE 1"=100' SHEET **4** OF **7**

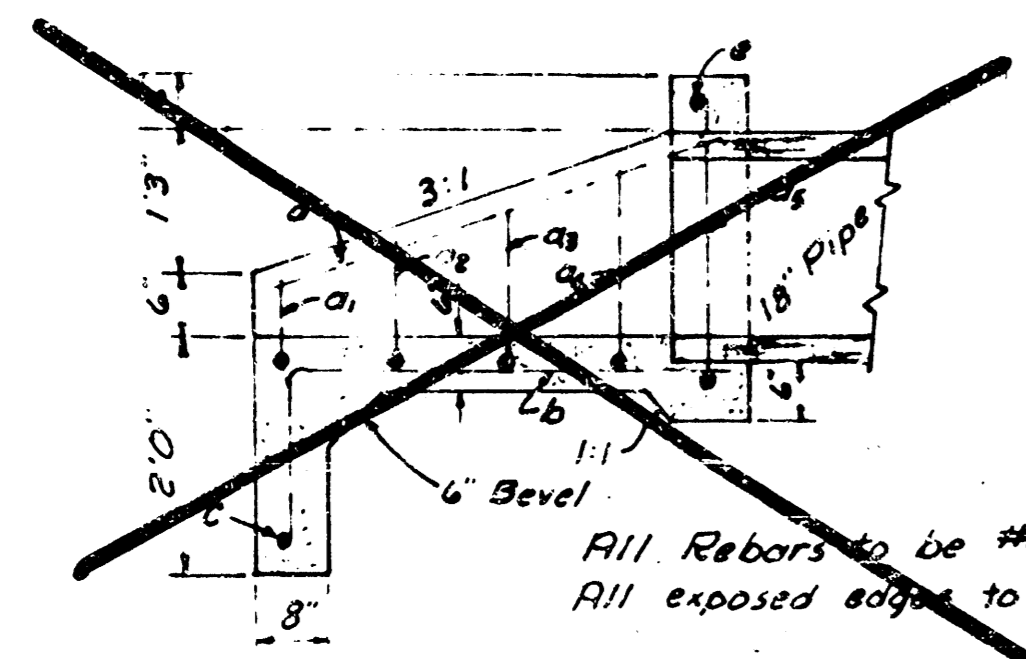


Project: Larkgrove
 Point statistics:
 Max point number used: 0
 Min point number used: 12093
 Current point number: 5339

Point	Current Coordinate Listing (All)			Description	Point	Current Coordinate Listing by Point Range			Description
	Northing	Easting	Elevation			Northing	Easting	Elevation	
17	20493.0226	21331.1163	143.4		6167	20755.3772	21753.3040	143.4	
18	20410.2979	20059.6545	145.6		6168	20678.2048	21724.8749	143.4	
19	20551.9383	21371.4867	143.6		6169	20714.1077	21733.8196	144.0	
20	20551.9383	22233.5983	145.8		6170	20714.5085	21733.8196	145.0	
21	21631.7172	22734.3200	143.7		6171	20714.5085	21876.6502	145.3	
22	21561.8420	22734.8032	144.3		6172	20678.8926	21864.9297	145.3	
23	21431.8454	22735.7727	144.8		6173	20678.9759	21654.5222	143.3	
24	21316.7784	22736.5007	144.8		6174	20677.3880	21514.4674	143.3	
25	21250.8594	22738.9572	144.8		6175	20677.3880	21514.4674	143.3	
26	21098.2564	22738.9572	146.0		6176	20677.0041	21444.4399	143.3	
27	21028.2560	22738.9572	146.1		6177	20676.7002	21374.4184	143.3	
28	20888.2614	22738.9572	144.8		6178	20676.7002	21374.4184	143.3	
29	20716.6850	22748.6565	143.0		6179	20441.5333	22464.8696	143.6	
30	20612.0050	22606.3775	143.0		6180	20458.5671	21967.1726	145.3	
31	20612.0050	22606.3775	143.7		6181	20481.0246	21108.2724	144.9	
32	20612.0050	22606.3775	144.4		6182	20481.0246	21108.2724	144.9	
33	20719.9507	22450.6263	144.8		6183	20431.3338	22100.1949	146.5	
34	20836.2546	22448.8210	144.0		6184	20473.1761	22176.3284	144.7	
35	20976.2513	22448.8210	144.0		6185	20409.2352	22173.5727	144.7	
36	20976.2513	22448.8210	144.0		6186	20474.6588	22444.3988	144.4	
37	20976.2513	22448.8210	144.0		6187	20474.6588	22444.3988	144.4	
38	20976.2513	22448.8210	144.0		6188	20485.5307	22312.2461	144.2	
39	20976.2513	22448.8210	144.0		6189	20421.1958	22317.7400	144.2	
40	20976.2513	22448.8210	144.0		6190	20502.5043	22380.1302	143.9	
41	20976.2513	22448.8210	144.0		6191	20502.5043	22380.1302	143.9	
42	20976.2513	22448.8210	144.0		6192	20320.7822	22400.3839	143.3	
43	20976.2513	22448.8210	144.0		6193	20320.7822	22400.3839	143.3	
44	20976.2513	22448.8210	144.0		6194	20320.7822	22400.3839	143.3	
45	20976.2513	22448.8210	144.0		6195	20320.7822	22400.3839	143.3	
46	20976.2513	22448.8210	144.0		6196	20320.7822	22400.3839	143.3	
47	20976.2513	22448.8210	144.0		6197	20220.5501	22164.9069	143.9	
48	20976.2513	22448.8210	144.0		6198	20220.5501	22164.9069	143.9	
49	20976.2513	22448.8210	144.0		6199	20220.5501	22164.9069	143.9	
50	20976.2513	22448.8210	144.0		6200	20220.5501	22164.9069	143.9	
51	20976.2513	22448.8210	144.0		6201	20220.5501	22164.9069	143.9	
52	20976.2513	22448.8210	144.0		6202	20220.5501	22164.9069	143.9	
53	20976.2513	22448.8210	144.0		6203	20220.5501	22164.9069	143.9	
54	20976.2513	22448.8210	144.0		6204	20220.5501	22164.9069	143.9	
55	20976.2513	22448.8210	144.0		6205	20220.5501	22164.9069	143.9	
56	20976.2513	22448.8210	144.0		6206	20220.5501	22164.9069	143.9	
57	20976.2513	22448.8210	144.0		6207	20220.5501	22164.9069	143.9	
58	20976.2513	22448.8210	144.0		6208	20220.5501	22164.9069	143.9	
59	20976.2513	22448.8210	144.0		6209	20220.5501	22164.9069	143.9	
60	20976.2513	22448.8210	144.0		6210	20220.5501	22164.9069	143.9	
61	20976.2513	22448.8210	144.0		6211	20220.5501	22164.9069	143.9	
62	20976.2513	22448.8210	144.0		6212	20220.5501	22164.9069	143.9	
63	20976.2513	22448.8210	144.0		6213	20220.5501	22164.9069	143.9	
64	20976.2513	22448.8210	144.0		6214	20220.5501	22164.9069	143.9	
65	20976.2513	22448.8210	144.0		6215	20220.5501	22164.9069	143.9	
66	20976.2513	22448.8210	144.0		6216	20220.5501	22164.9069	143.9	
67	20976.2513	22448.8210	144.0		6217	20220.5501	22164.9069	143.9	
68	20976.2513	22448.8210	144.0		6218	20220.5501	22164.9069	143.9	
69	20976.2513	22448.8210	144.0		6219	20220.5501	22164.9069	143.9	
70	20976.2513	22448.8210	144.0		6220	20220.5501	22164.9069	143.9	
71	20976.2513	22448.8210	144.0		6221	20220.5501	22164.9069	143.9	
72	20976.2513	22448.8210	144.0		6222	20220.5501	22164.9069	143.9	
73	20976.2513	22448.8210	144.0		6223	20220.5501	22164.9069	143.9	
74	20976.2513	22448.8210	144.0		6224	20220.5501	22164.9069	143.9	
75	20976.2513	22448.8210	144.0		6225	20220.5501	22164.9069	143.9	
76	20976.2513	22448.8210	144.0		6226	20220.5501	22164.9069	143.9	
77	20976.2513	22448.8210	144.0		6227	20220.5501	22164.9069	143.9	
78	20976.2513	22448.8210	144.0		6228	20220.5501	22164.9069	143.9	
79	20976.2513	22448.8210	144.0		6229	20220.5501	22164.9069	143.9	
80	20976.2513	22448.8210	144.0		6230	20220.5501	22164.9069	143.9	
81	20976.2513	22448.8210	144.0		6231	20220.5501	22164.9069	143.9	
82	20976.2513	22448.8210	144.0		6232	20220.5501	22164.9069	143.9	
83	20976.2513	22448.8210	144.0		6233	20220.5501	22164.9069	143.9	
84	20976.2513	22448.8210	144.0		6234	20220.5501	22164.9069	143.9	
85	20976.2513	22448.8210	144.0		6235	20220.5501	22164.9069	143.9	
86	20976.2513	22448.8210	144.0		6236	20220.5501	22164.9069	143.9	
87	20976.2513	22448.8210	144.0		6237	20220.5501	22164.9069	143.9	
88	20976.2513	22448.8210	144.0		6238	20220.5501	22164.9069	143.9	
89	20976.2513	22448.8210	144.0		6239	20220.5501	22164.9069	143.9	
90	20976.2513	22448.8210	144.0		6240	20220.5501	22164.9069	143.9	
91	20976.2513	22448.8210	144.0		6241	20220.5501	22164.9069	143.9	
92	20976.2513	22448.8210	144.0		6242	20220.5501	22164.9069	143.9	
93	20976.2513	22448.8210	144.0		6243	20220.5501	22164.9069	143.9	
94	20976.2513	22448.8210	144.0		6244	20220.5501	22164.9069	143.9	
95	20976.2513	22448.8210	144.0		6245	20220.5501	22164.9069	143.9	
96	20976.2513	22448.8210	144.0		6246	20220.5501	22164.9069	143.9	
97	20976.2513	22448.8210	144.0		6247	20220.5501	22164.9069	143.9	
98	20976.2513	22448.8210	144.0		6248	20220.5501	22164.9069	143.9	
99	20976.2513	22448.8210	144.0		6249	20220.5501	22164.9069	143.9	
100	20976.2513	22448.8210	144.0		6250	20220.5501	22164.9069	143.9	
101	20976.2513	22448.8210	144.0		6251	20220.5501	22164.9069	143.9	
102	20976.2513	22448.8210	144.0		6252	20220.5501	22164.9069	143.9	
103	20976.2513	22448.8210	144.0		6253	20220.5501	22164.9069	143.9	
104	20976.2513	22448.8210	144.0		6254	20220.5501	22164.9069	143.9	
105	20976.2513	22448.8210	144.0		6255	20220.5501	22164.9069	143.9	
106	20976.2513	22448.8210	144.0		6256	20220.5501	22164.9069	143.9	
107	20976.2513	22448.8210	144.0		6257	20220.5501	22164.9069	143.9	
108	20976.2513	22448.8210	144.0		6258	20220.5501	22164.9069	143.9	
109	20976.2513	22448.8210	144.0		6259	20220.5501	22164.9069	143.9	
110	20976.2513	22448.8210	144.0		6260	20220.5501	22164.9069	143.9	
111	20976.2513	22448.8210	144.0		6261	20220.5501	22164.9069	143.9	
112	20976.2513	22448.8210	144.0		6262	20220.5501	22164.9069	143.9	
113	20976.2513	22448.8210	144.0		6263	20220.5501	22164.9069	143.9	
114	20976.2513	22448.8210	144.0		6264	20220.5501	22164.9069	143.9	
115	20976.2513	22448.8210	144.0		6265	20220.5501	22164.9069	143.9	
116	20976.2513	22448.8210	144.0		6266	20220.5501	22164.9069	143.9	
117	20976.2513	22448.8210	144.0		6267	20220.5501	22164.9069	143.9	
118	20976.2513	22448.8210	144.0		6268	20220.5501	22164.9069	143.9	
119	20976.2513	22448.8210	144.0		6269	20220.5501	22164.9069	143.9	
120	20976.2513	22448.8210	144.0		6270	20220.5501	22164.9069	143.9	
121	20976.2513	22448.8210	144.0		6271	20220.5501	22164.9069	143.9	
122	20976.2513	22448.8210	144.0		6272	20220.5501	22164.9069	143.9	
123	20976.2513	22448.8210	144.0		6273	20220.5501	22164.9069	143.9	
124	20976.2513	22448.8210	144.0		6274	20220.5501	22164.9069	143.9	
125	20976.2513	22448.8210	144.0		6275	20220.5501	22164.9069	143.9	
126	20976.2513	22448.8210	144.0		6276	20220.5501	22164.9069	143.9	
127	20976.2513</								



PLAN
Scale: 1/2" = 10'



SECTION
Scale: 1/2" = 10'

All Rebars to be #4.
All exposed edges to have 1/2" bevel.

a bars	#	Length	Weight
a1	3'0"		
a2	3'5"		
a3	3'2"		
a4	2'11"		
a5	2'9"		

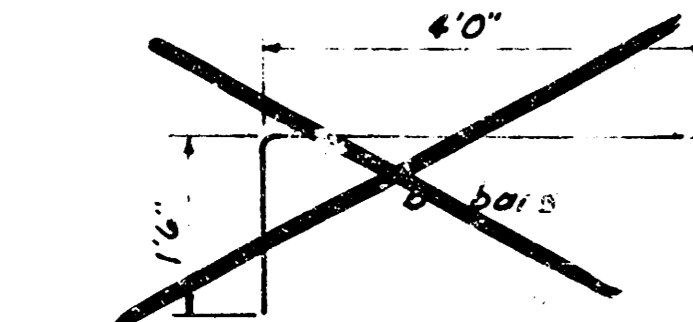
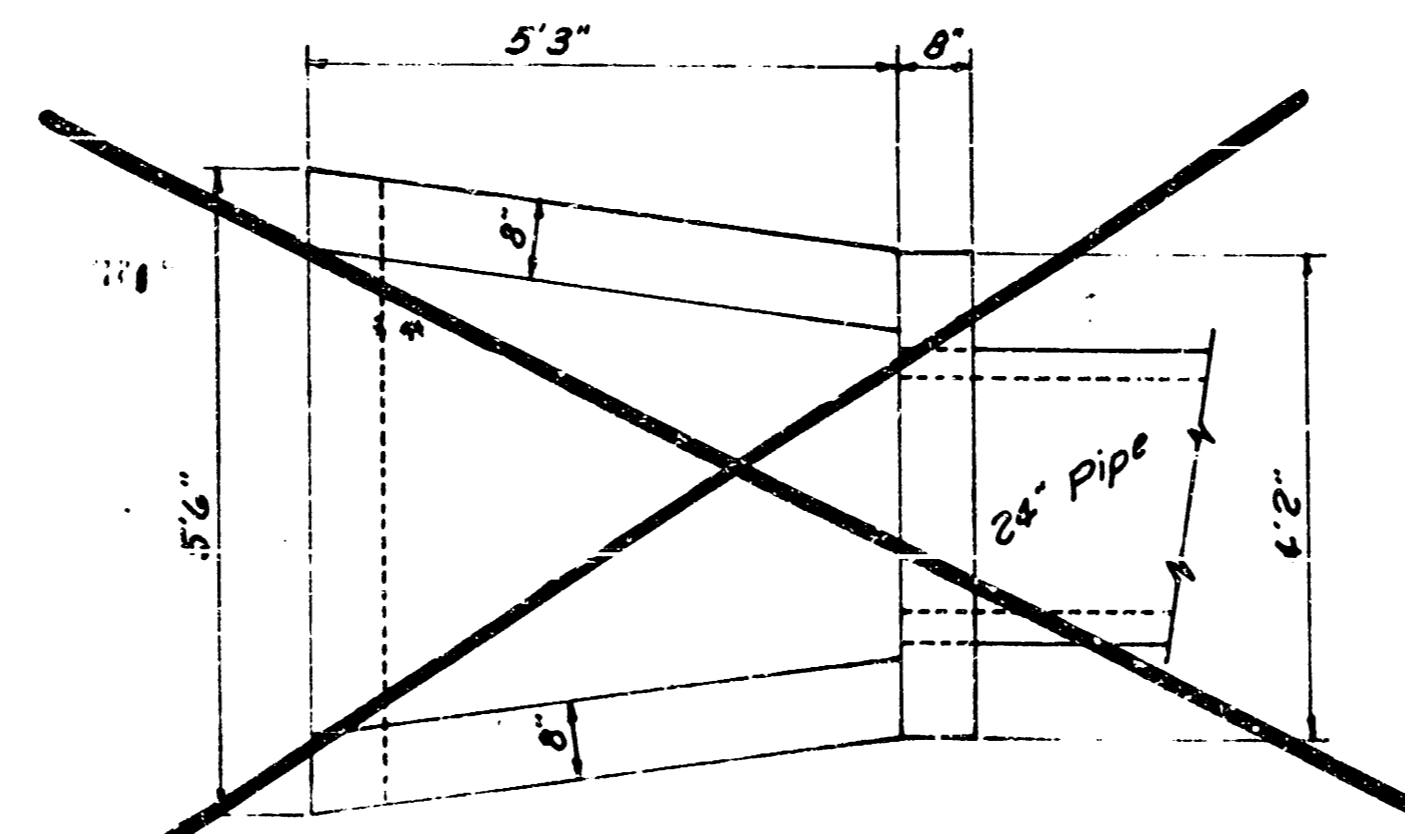
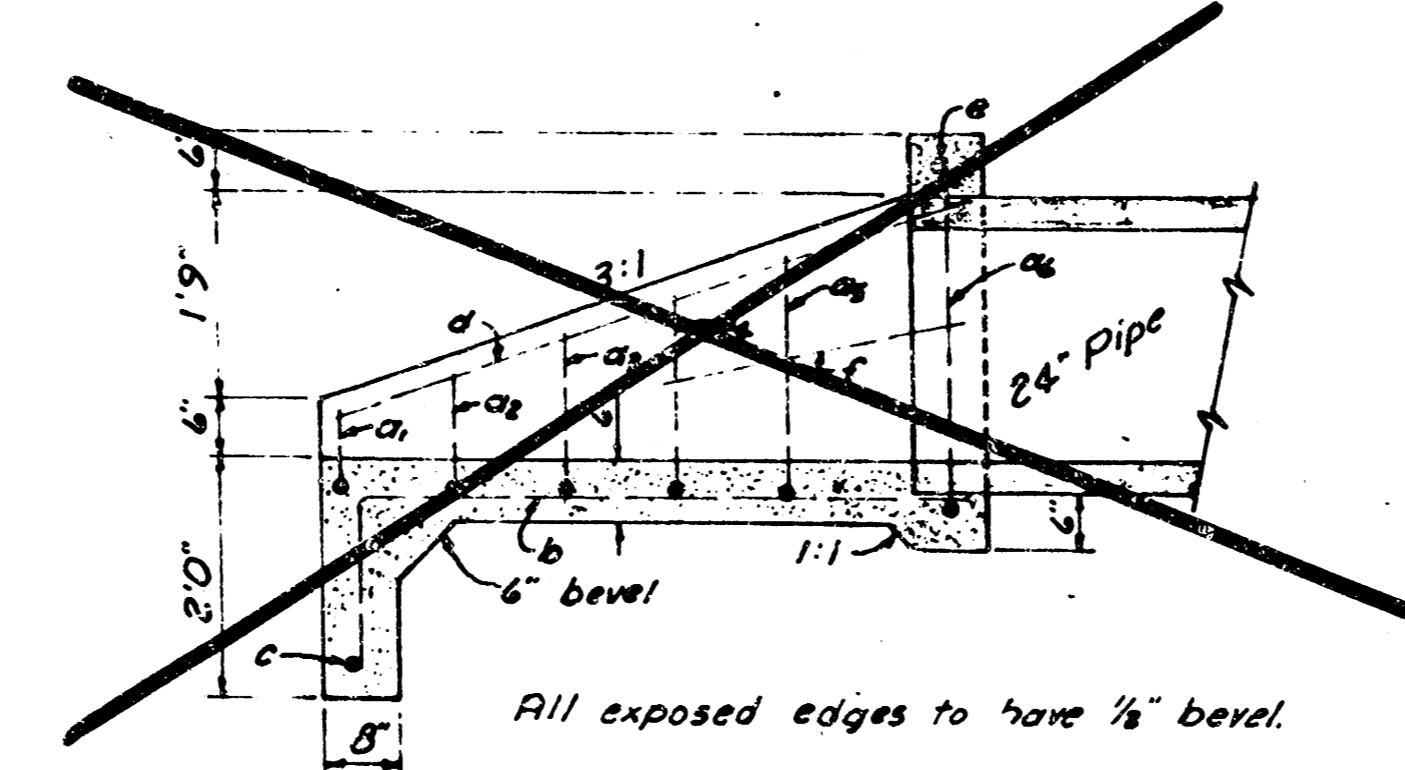


TABLE OF QUANTITIES				
BAR	NUMBER	LENGTH	SHAPE	WEIGHT
a1	1	5'0"		3.34
a2	1	5'3"		3.51
a3	1	5'8"		3.70
a4	1	4'1"		4.06
a5	1	7'2"		4.70
b	5			18.37
c	1	4'0"		2.67
d	2	4'0"		5.34
e	1	3'2"		2.12
Total Rebar, lbs				47.99
Concrete, C.Y.				0.91

HEADWALL FOR 18" PIPE



PLAN
Scale: 1/2" = 10'



SECTION
Scale: 1/2" = 10'

All exposed edges to have 1/2" bevel.

a bars	#	Length	Weight
a1	4'5"		
a2	4'6"		
a3	4'3"		
a4	4'0"		
a5	3'0"		
a6	3'5"		

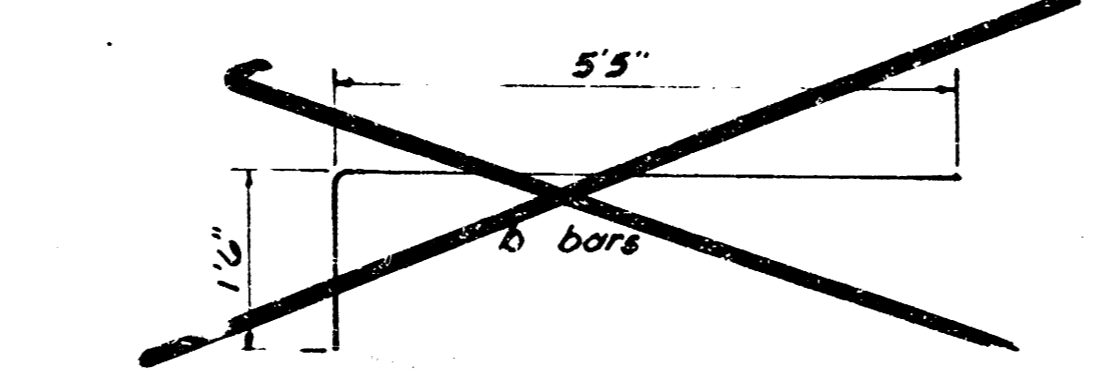
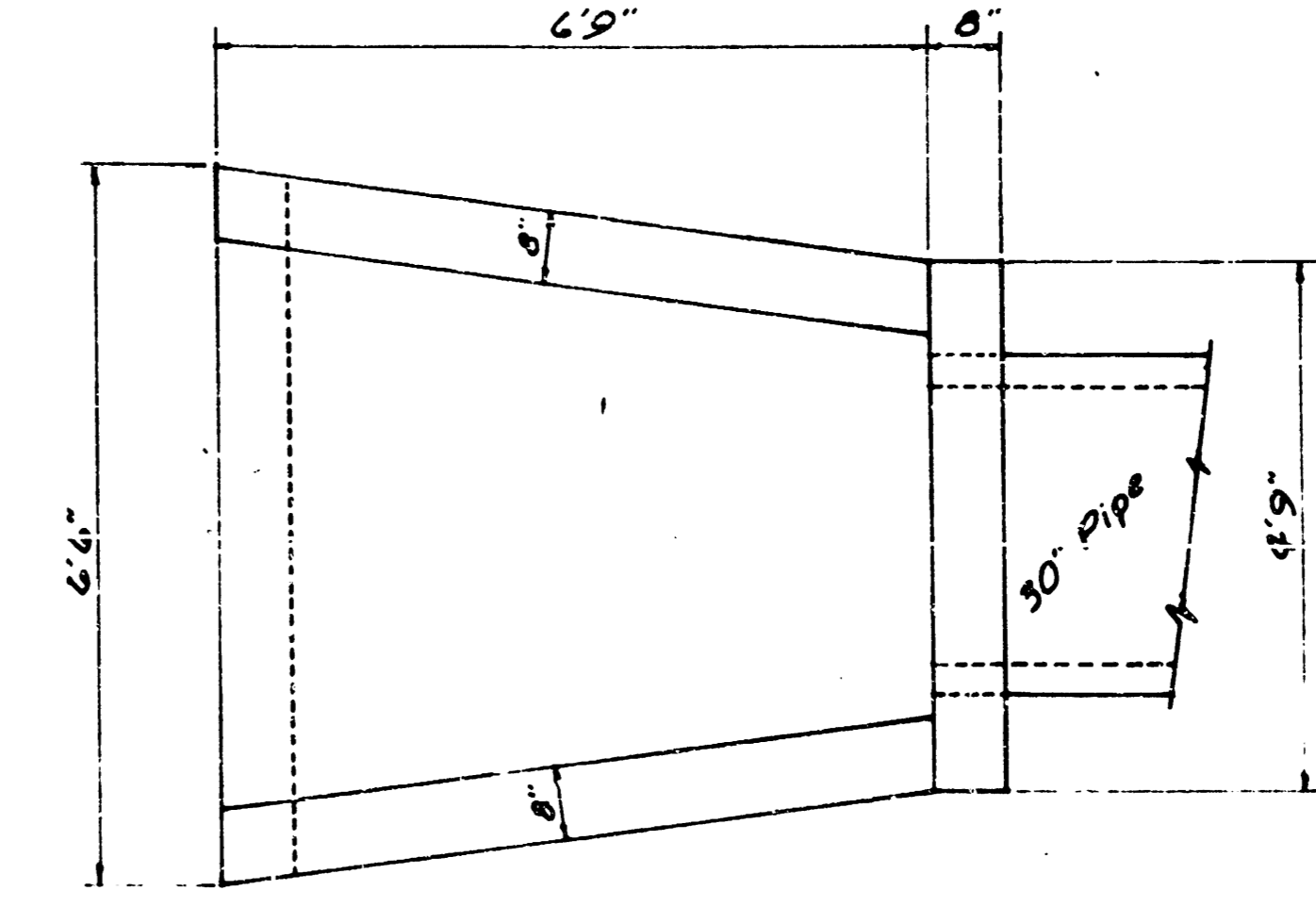
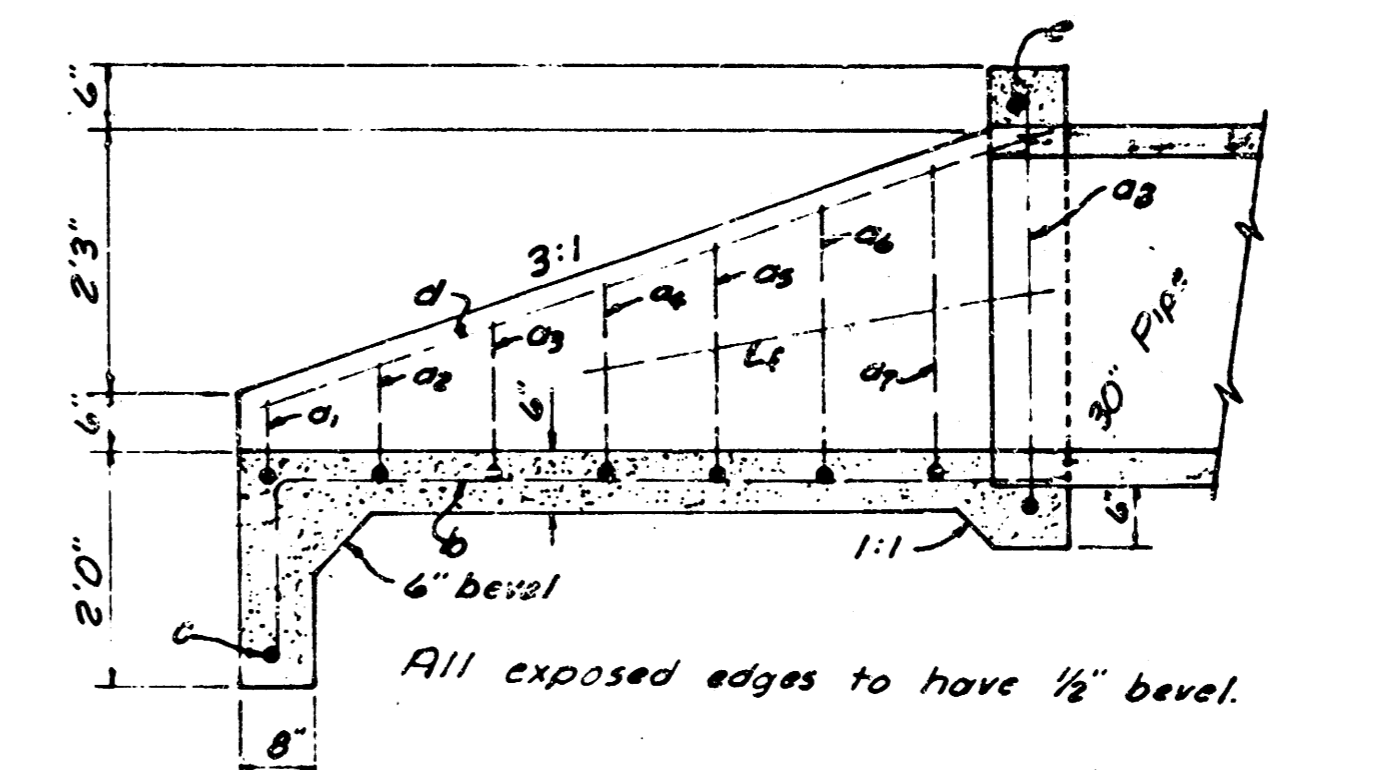


TABLE OF QUANTITIES				
BAR	NUMBER	LENGTH	SHAPE	WEIGHT
a1	1	4'1"		4.23
a2	1	4'4"		4.51
a3	1	4'9"		4.70
a4	1	7'2"		4.70
a5	1	2'7"		3.07
a6	1	9'		6.29
b	6	4'11"		27.72
c	1	5'0"		3.37
d	2	5'10"		7.79
e	1	3'10"		2.56
f	2	2'3"		4.47
Total Rebar, lbs				78.51
Concrete, C.Y.				1.42

HEADWALL FOR 24" PIPE



PLAN
Scale: 1/2" = 10'



SECTION
Scale: 1/2" = 10'

All exposed edges to have 1/2" bevel.

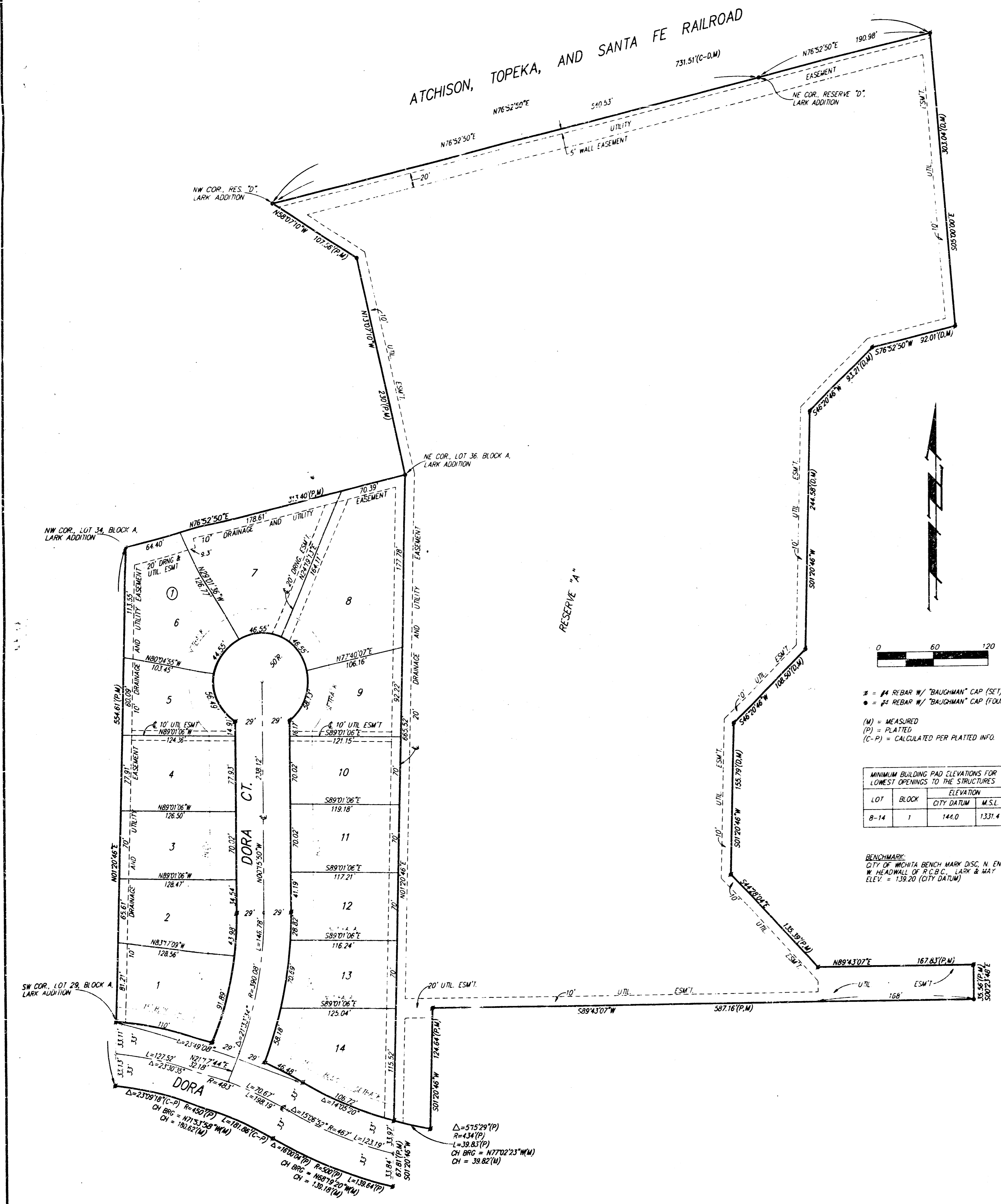
a bars	#	Length	Weight
a1	5'0"		
a2	4'6"		
a3	5'3"		
a4	5'0"		
a5	4'8"		
a6	4'6"		
a7	4'3"		
a8	4'1"		
7'0"			
b bars	#	Length	Weight
b1	7'0"		
b2	7'0"		
b3	7'0"		
b4	7'0"		
b5	7'0"		
b6	7'0"		
b7	7'0"		
b8	7'0"		
b9	7'0"		
b10	7'0"		
b11	7'0"		
b12	7'0"		
b13	7'0"		
b14	7'0"		
b15	7'0"		
b16	7'0"		
b17	7'0"		
b18	7'0"		
b19	7'0"		
b20	7'0"		
b21	7'0"		
b22	7'0"		
b23	7'0"		
b24	7'0"		
b25	7'0"		
b26	7'0"		
b27	7'0"		
b28	7'0"		
b29	7'0"		
b30	7'0"		

TABLE OF QUANTITIES				
BAR	NUMBER	LENGTH	SHAPE	WEIGHT
a1	1	7'0"		4.68
a2	1	7'4"		4.90
a3	1	7'9"		5.18
a4	1	8'2"		5.44
a5	1	8'6"		5.68
a6	1	9'0"		6.01
a7	1	9'3"		6.29
a8	1	11'1"		7.40
b	7	8'6"		35.07
c	1	6'0"		6.01
d	2	7'6"		10.02
e	1	4'5"		2.93
f	2	4'3"		5.68
Total Rebar, lbs				103.33
Concrete, C.Y.				2.01

HEADWALL FOR 30" PIPE

LARK 4TH ADDITION

WICHITA, SEDGWICK COUNTY, KANSAS



State of Kansas) SS We, Baughman Company, P.A., Surveyors in
Sedgwick County) do hereby certify that we have surveyed
and platted "LARK 4TH ADDITION", Wichita, Sedgwick County, Kansas and
that the accompanying plat is a true and correct exhibit of the
property surveyed, described as follows: A tract of land in the NW1/4
of Sec. 31, Twp. 27-S, R-1-W of the 6th P.M., Sedgwick County,
Kansas, described as and being a replat of the following: Lots 29,
30, 31, 32, 33, 34, 35, 36, 37, 38, 39, 40, 41, 42, 43, 44, and 45,
Block A, Lark Addition, Wichita, Sedgwick County, Kansas, together
with Reserve "D" as platted in said Lark Addition, together with
Dora Ct. as platted in said Block A, and together with that part of
said Lot 29 as extended south to the south line of said Dora, together
with a tract in said NW1/4 described as beginning at the NE Corner
of said Reserve "D"; thence N76°52'50"E along the northerly line of
said Reserve "D"; thence N76°52'50"E along the northerly line of
said Reserve "D"; thence S05°00'00"E, 303.04 feet; thence S76°52'50"W, 92.01 feet; thence
S46°20'46"W, 93.21 feet; thence S01°20'46"W, 244.58 feet; thence
S46°20'46"W, 108.50 feet to a point on the east line of said Reserve "D";
thence N01°20'46"E along the east line of said Reserve "D"; 74.39 feet
to a deflection point in said east line; thence N43°39'14"W along said
east line, 63.64 feet to a deflection point in said east line; thence
N01°20'46"E along said east line, 184.18 feet to a deflection point in
said east line; thence N46°20'46"E along said east line, 108.50 feet
to a deflection point in said east line; thence N85°27'48"E along said
east line, 53.54 feet to a deflection point in said east line; thence
N13°07'10"W along said east line, 285.98 feet to the point of beginning.

Existing public easements and dedications being vacated by
virtue of K.S.A. 12-512(b).
Baughman Company, P.A.

Michael G. Conroy
Michael G. Conroy
Surveyor

Know all men by these presents that we,
the undersigned, have caused the land in the surveyors certificate to be
platted into Lots, a Block, Streets, and a Reserve to be known as "LARK 4TH
ADDITION", Wichita, Sedgwick County, Kansas. The utility easements are
hereby granted as indicated for the construction and maintenance of all
public utilities. The drainage easement is hereby granted as indicated
for drainage purposes. The drainage and utility easements are hereby
granted as indicated for drainage purposes and for the construction and
maintenance of all public utilities. The wall easement is hereby granted as
indicated for the construction and maintenance of a private wall and
utility main lines and service lines shall be allowed to cross this easement.
The streets are hereby dedicated to and for the use of the public.
Reserve "A" is hereby reserved for drainage purposes, lakes, landscaping,
sidewalks, gazebos, and utilities as confined to easements. Reserve "A"
shall be owned and maintained by the Homeowners Association for the
addition. The Minimum Building Pad Elevations for the lowest opening
to the structures shall be as shown on the face of the plat.

MINIMUM BUILDING PAD ELEVATIONS FOR
LOWEST OPENINGS TO THE STRUCTURES

LOT	BLOCK	CITY DATUM	M.S.L.
8-14	1	144.0	1331.4

Kick'N Development Corporation
Paul E. Kelsey
Paul E. Kelsey
President

State of Kansas) SS The foregoing instrument acknowledged be-
fore me, this 21st day of JANUARY, 1997, by Paul E. Kelsey,
President of Kick'N Development Corporation, on behalf of the
corporation.

Philip J. Meyer
Philip J. Meyer
Notary Public
STATE OF KANSAS
My App't. Exp. 5/5/97

We, the undersigned, holders of a mortgage
on the above described property, do hereby consent to this plat of
"LARK 4TH ADDITION", Wichita, Sedgwick County, Kansas.
State Bank of Colwich

James D. Ashcraft
James D. Ashcraft
A.V.P.

State of Kansas) SS The foregoing instrument acknowledged be-
fore me, this 28th day of JANUARY, 1997, by
James D. Ashcraft, A.V.P. of the State Bank of Colwich, on
behalf of the bank.

Scott Bryan Kent
Scott Bryan Kent
Notary Public
My App't. Exp. 8-5-98

This plat of "LARK 4TH ADDITION", Wichita,
Sedgwick County, Kansas has been submitted to and approved by
the Wichita-Sedgwick County Metropolitan Area Planning Commission,
Wichita, Kansas.
Dated this _____ day of _____, 199__
Wichita-Sedgwick County Metropolitan Area Planning Commission

Susan Osborne-Howes, Chair

Marvin S. Krout, Secretary

This plat approved and all dedications
shown hereon accepted by the City Council of the City of Wichita,
Kansas, this _____ day of _____, 1997.

Bob Knight, Mayor

Pat Burnett, City Clerk

Entered on transfer record this _____ day
of _____, 1997.

James Alford, County Clerk

State of Kansas) SS This is to certify that this plat has been
filed for record in the office of the Register of Deeds, this _____ day
of _____, 1997, at _____ o'clock _____ M.; and is duly recorded.

Larry Consvler, Register of Deeds

Michael D. Hurtt, Deputy