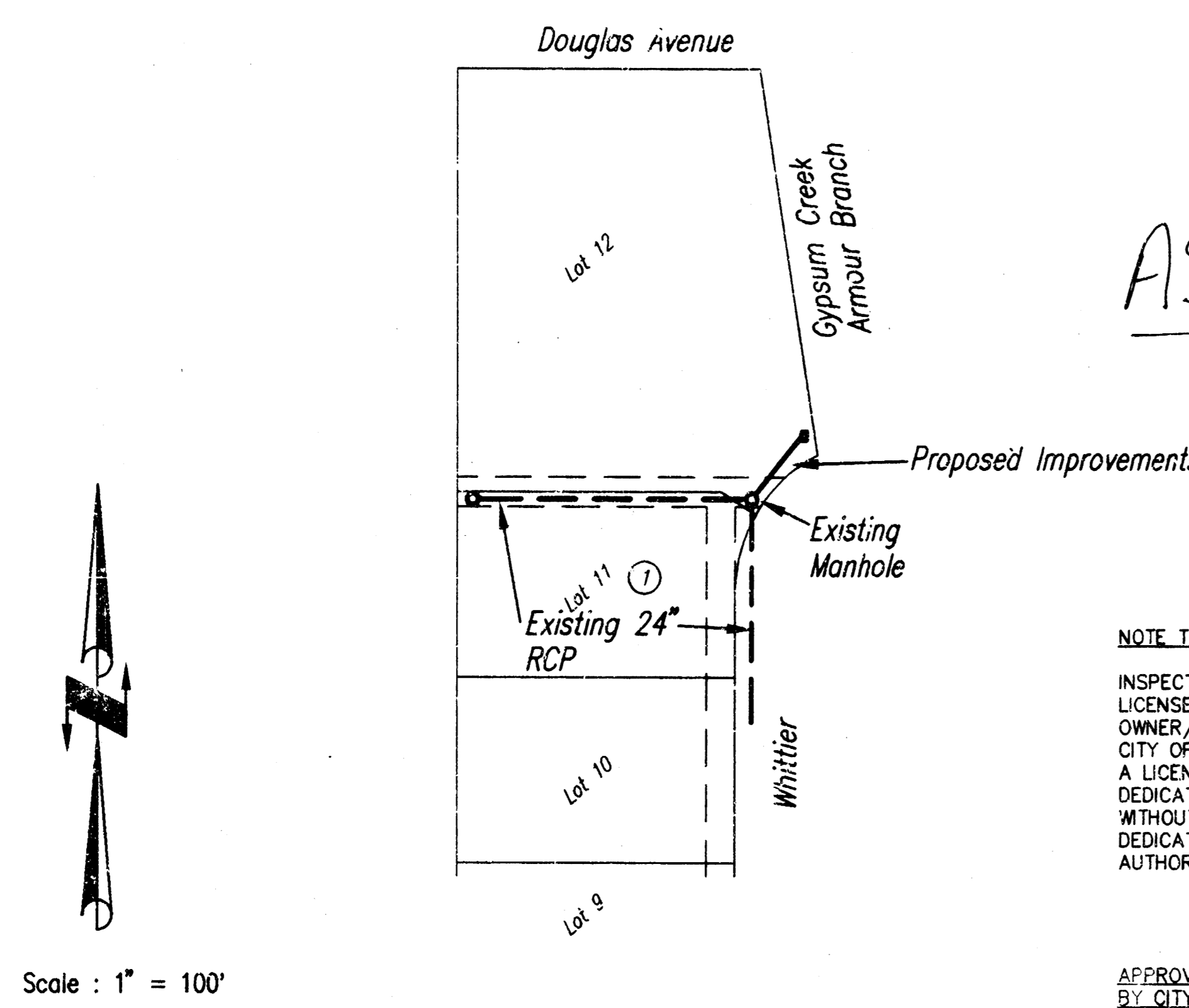


CITY OF WICHITA, KANSAS
 PRIVATE STORM SEWER IMPROVEMENTS
 TO SERVE OMNI CENTER IV OFFICES, WHITTIER STREET @ ARMOUR
 SOUTH HALF OF LOT 11, AND ALL OF LOT 12, BLOCK 1
 ROCKWOOD SOUTH FIFTH ADDITION TO
 WICHITA, KANSAS
 PRIVATE PROJECT NO.: 704 PPS (607861)



Scale : 1" = 100'

AS-BUILT

NOTE TO CONTRACTOR:
 INSPECTION AND TESTING FOR THIS PROJECT IS TO BE PROVIDED BY A LICENSED CONSULTING ENGINEERING FIRM UNDER CONTRACT WITH THE OWNER/DEVELOPER. SAID INSPECTION TO BE IN ACCORDANCE WITH THE CITY OF WICHITA STANDARD ENGINEERING PRACTICES AND CERTIFIED BY A LICENSED PROFESSIONAL ENGINEER. NO WORK SHALL BE PERFORMED IN DEDICATED EASEMENTS OR PUBLIC RIGHT-OF-WAY BY THE CONTRACTOR WITHOUT SUCH INSPECTION NOR SHALL ANY WORK BE COMMENCED IN DEDICATED EASEMENTS OR PUBLIC RIGHT-OF-WAY WITHOUT WRITTEN AUTHORIZATION BY THE CITY ENGINEER.

APPROVED AS NOTED
 BY CITY ENGINEER OF WICHITA:
 SANITARY SEWER _____
 STORM SEWER VRH 4/4/97
 DRIVEWAY APPROACH _____
 WATER MAINS _____
 PAVING _____

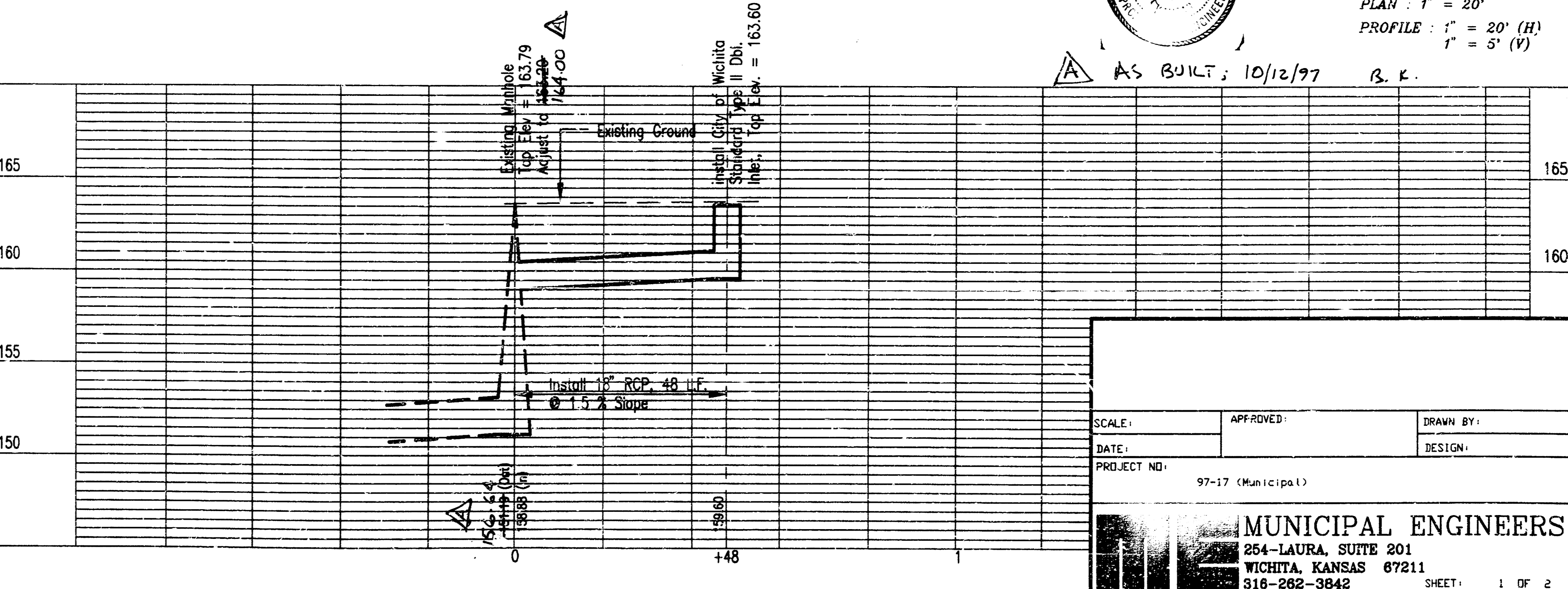
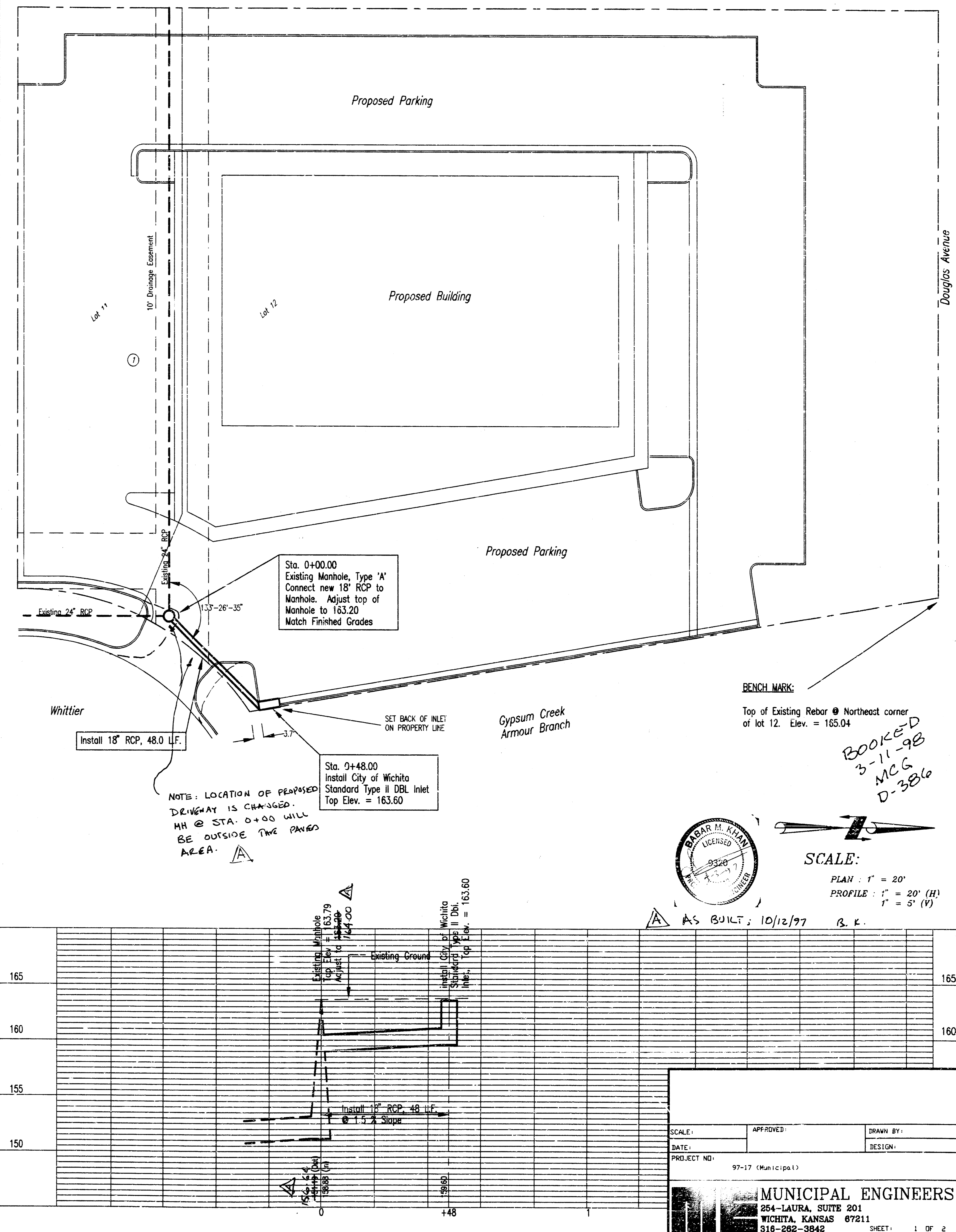
GENERAL NOTES:

- CONTRACTOR WILL BE REQUIRED TO PROVIDE A MINIMUM ADVANCE NOTICE OF TWENTY-FOUR (24) HOURS TO UTILITY COMPANIES PRIOR TO STARTING ANY EXCAVATION AS FOLLOWS:

KANSAS GAS & ELECTRIC	316-261-6421
KGE GAS	316-942-8350
SOUTHWESTERN BELL TELEPHONE CO.	316-383-0454
WICHITA WATER DEPARTMENT	316-269-4555
MULTIMEDIA CABLEVISION	316-262-270
WICHITA SEWER MAINTENANCE	316-268-4210
KANSAS ONE-CALL	1-687-2470
- CONTRACTOR SHALL NOT START WORK ON THE PROJECT UNTIL THE PROJECT INSPECTOR IS ASSIGNED TO THE PROJECT AND IS PRESENT ON THE SITE. ANY WORK DONE WITHOUT INSPECTION WILL BE REQUIRED TO BE UNCOVERED FOR INSPECTION.
- EXISTING UTILITIES AND THEIR LOCATIONS, AS SHOWN ON THE PLANS, REPRESENT THE BEST INFORMATION OBTAINABLE FOR DESIGN. LOCATION INFORMATION HAS BEEN OBTAINED FROM THE VARIOUS UTILITY COMPANIES AND IS EITHER FROM COMPANY RECORD DRAWINGS OR COMPANY PROVIDED FIELD LOCATIONS. THE CONTRACTOR WILL BE REQUIRED TO WORK AROUND EXISTING UTILITIES WITHIN THE RIGHT-OF-WAY WHICH DO NOT CONFLICT WITH PROPOSED CONSTRUCTION.
- RUBBLE FROM THE REMOVAL OF MISCELLANEOUS STRUCTURES AND EXCESS EXCAVATION WHICH IS TO BE WASTED SHALL BE DISPOSED OF ON SITES TO BE PROVIDED BY THE CONTRACTOR. THESE SITES SHALL BE APPROVED BY THE ENGINEER AS TO SUITABILITY, APPEARANCE AND SITE LOCATION. LOCATIONS THAT, IN THE OPINION OF THE ENGINEER, WILL LEAVE UNSIGHTLY APPEARANCE WILL NOT BE APPROVED.
- THE CONTRACTOR SHALL BE RESPONSIBLE FOR PRESERVING PROPERTY IRONS. THE CONTRACTOR WILL BE REQUIRED TO RE-ESTABLISH ANY PROPERTY IRONS WHICH ARE DAMAGED OR DESTROYED BY HIS CONSTRUCTION OPERATIONS. SUCH IRONS SHALL BE RE-ESTABLISHED BY A LICENSED LAND SURVEYOR IN ACCORDANCE WITH STATE LAW.
- ALL AREAS DISTURBED DURING CONSTRUCTION SHALL BE SEEDED PER CITY OF WICHITA REQUIREMENTS.

LOCATION MAP

MICHAEL E. LINDEBAK, P.E., CITY ENGINEER



SCALE:
 PLAN : 1" = 20'
 PROFILE : 1" = 20' (H)
 1" = 5' (V)

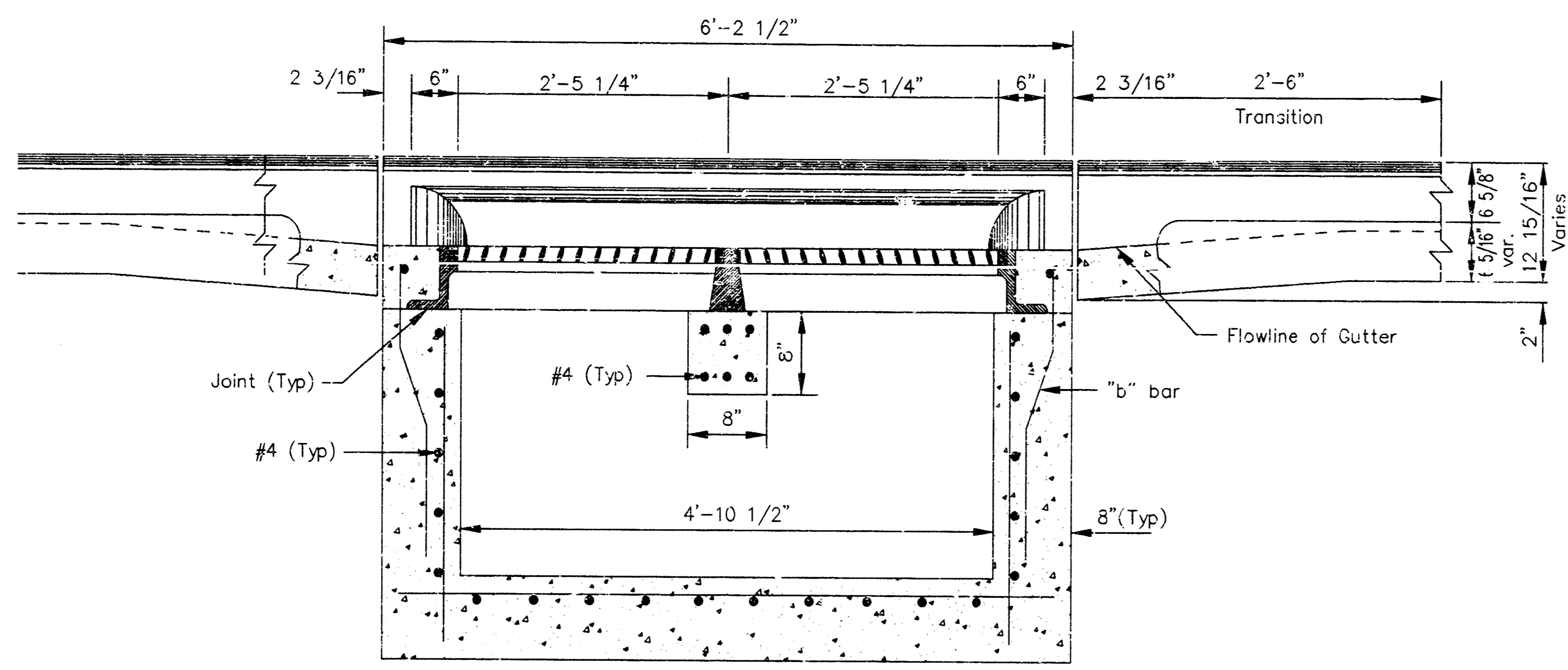
AS BUILT; 10/12/97 B. E.

SCALE:	APPROVED:	DRAWN BY:
DATE:		DESIGN:
PROJECT NO.:	97-17 (Municipal)	

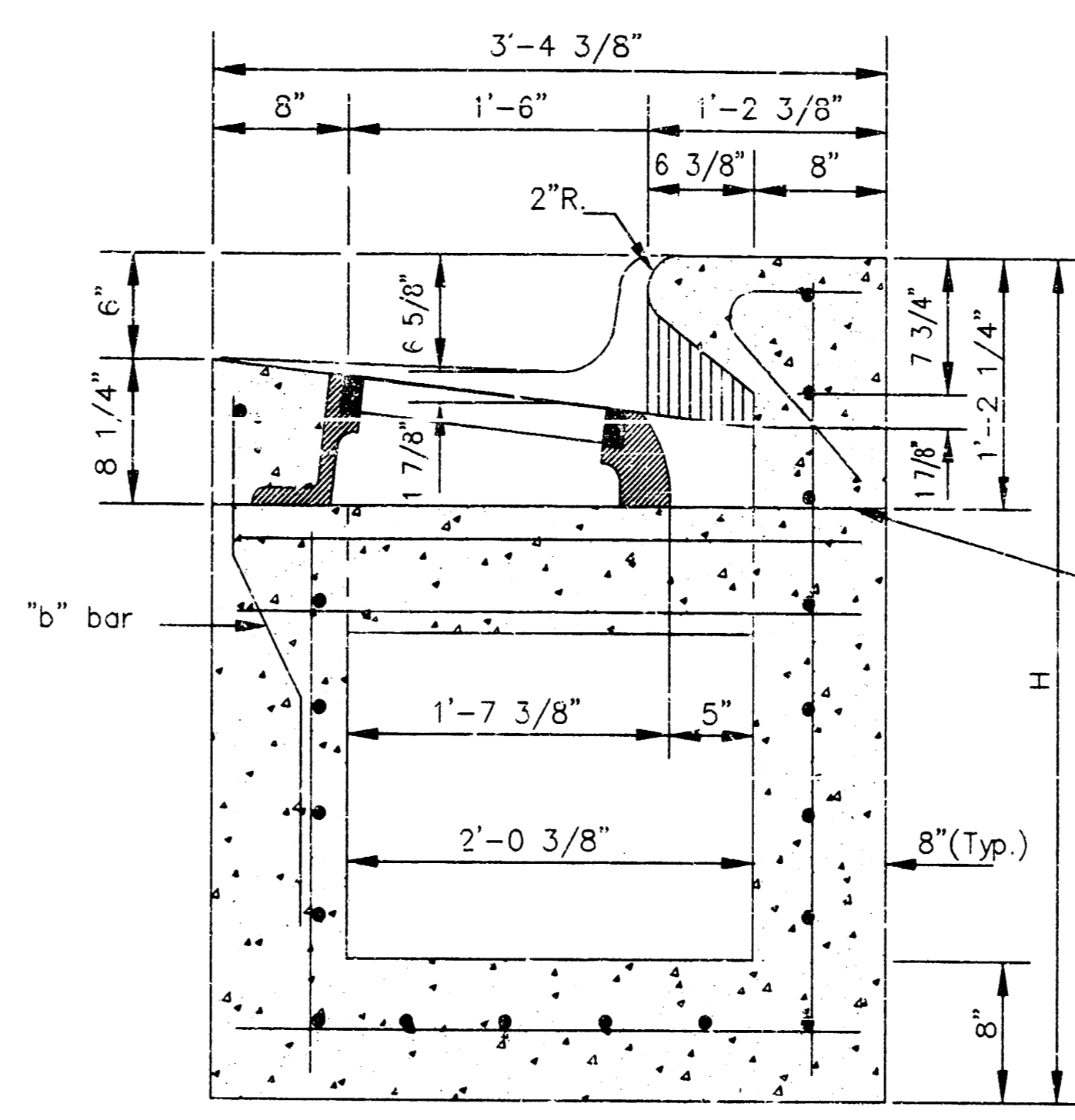
MUNICIPAL ENGINEERS
 254-LAURA, SUITE 201
 WICHITA, KANSAS 67211
 316-262-3842

*BOOKED
 3-11-98
 MCG
 D-386*

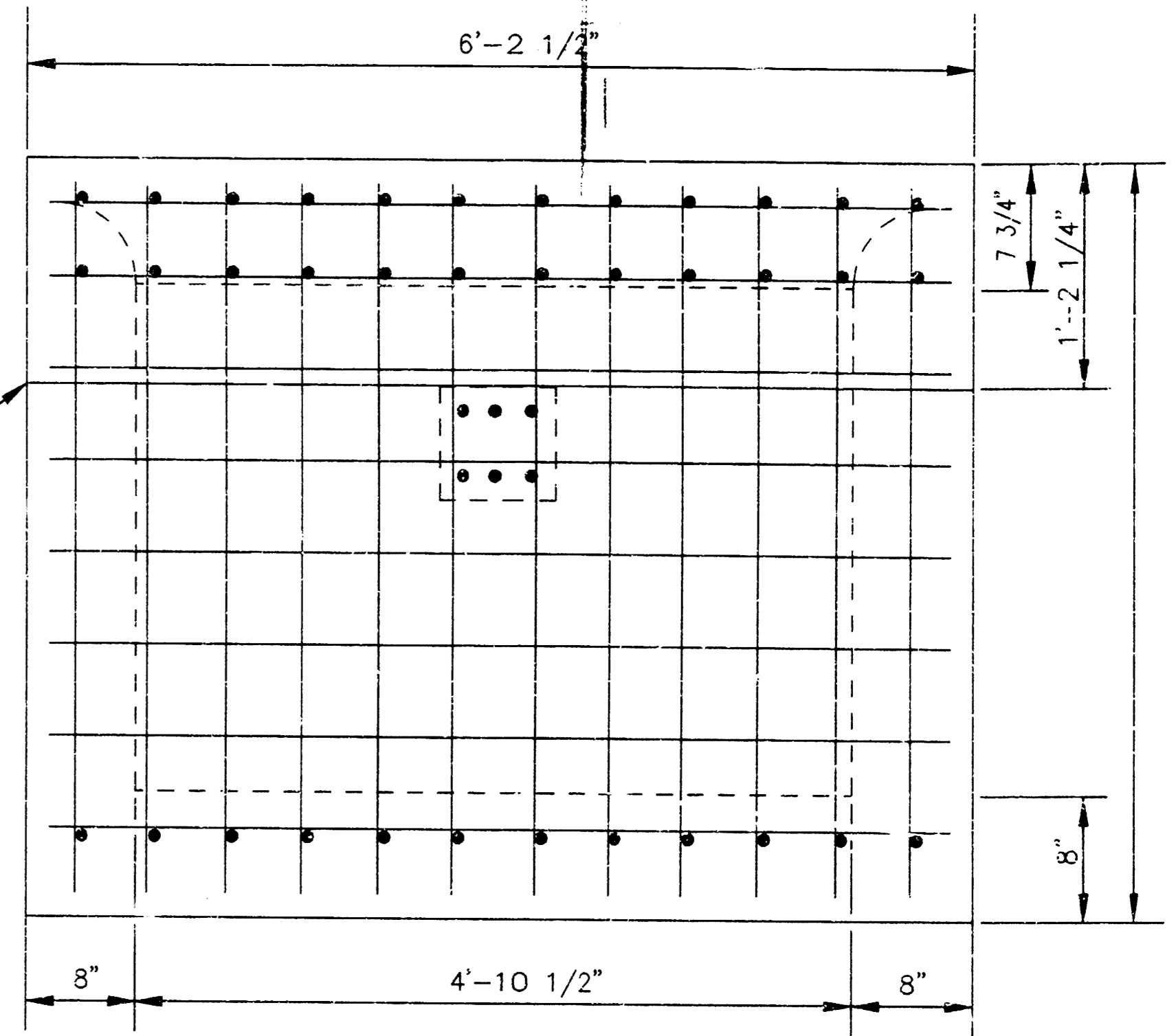
NOTES



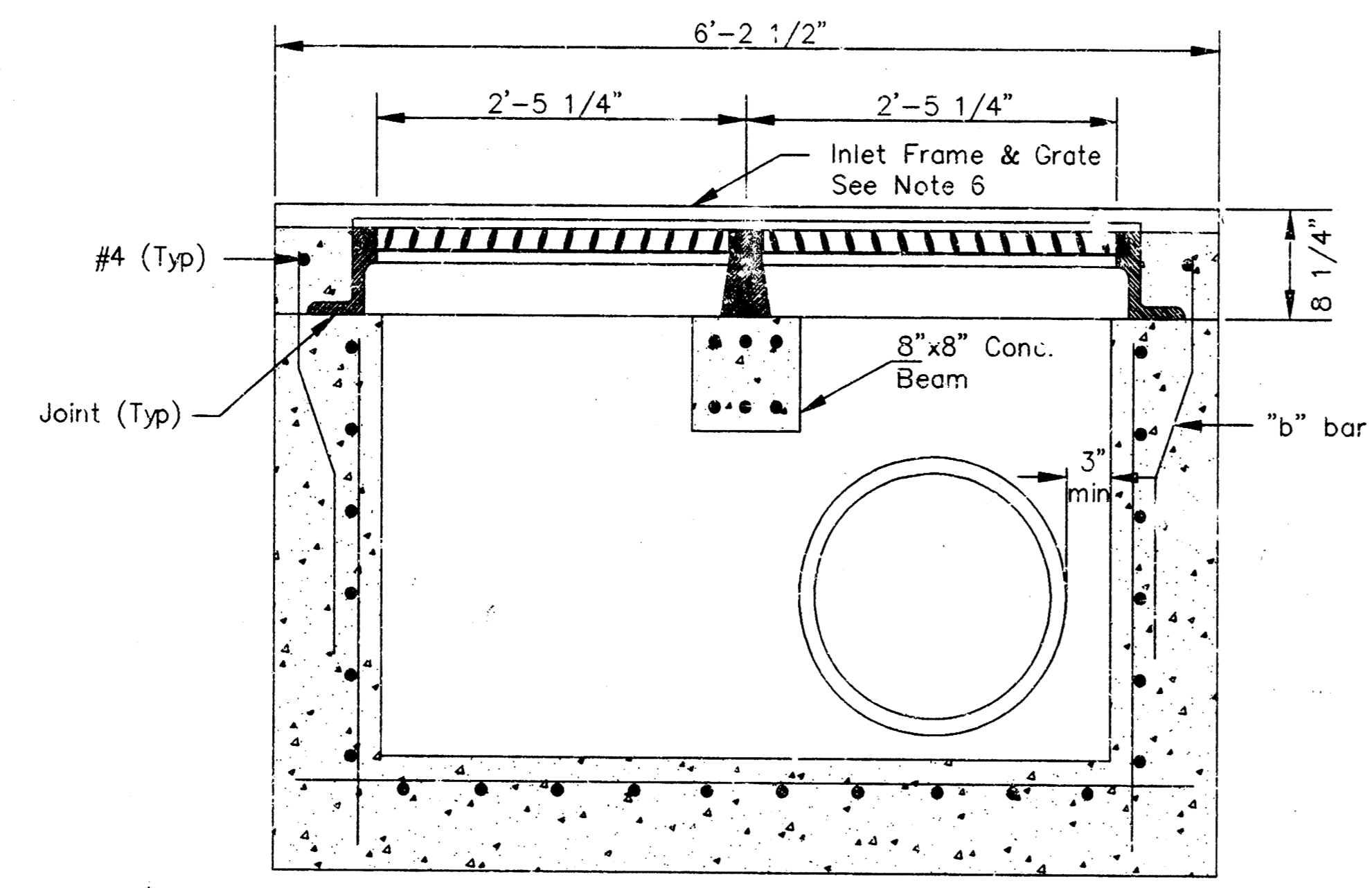
SECTION C-C



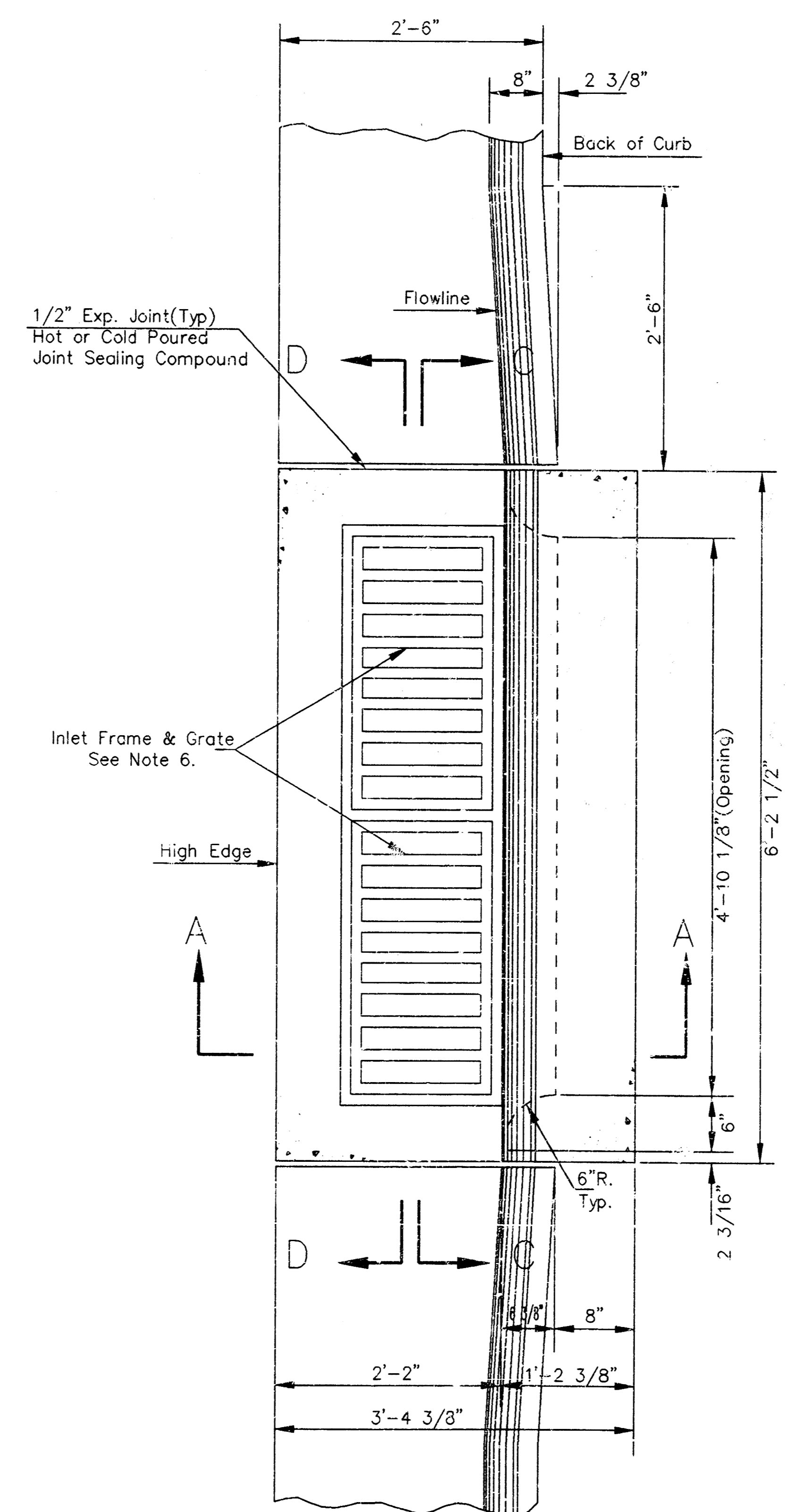
SECTION A-A



REAR WALL

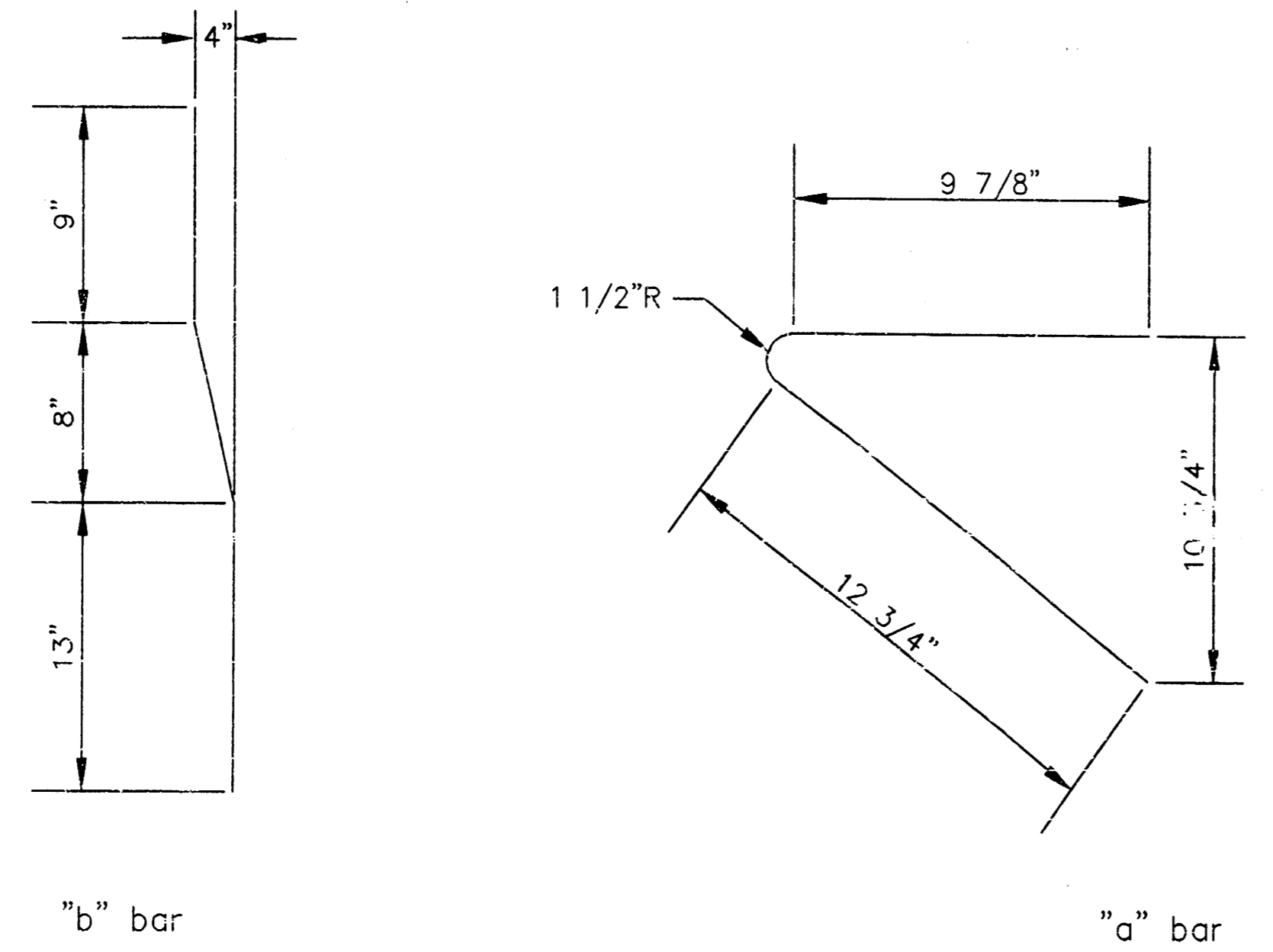


SECTION D-D



GENERAL NOTES

1. Use the concrete mix specified for the City of Wichita concrete pavement throughout. All exposed edges shall be finished with an edging tool. Reinforcing bars shall be bent around pipe.
2. Inlet invert shall be shaped with 8 sack mix concrete to create flow channels and to increase hydraulic efficiency such that the inlet will be self cleaning between all inlet and/or outlet pipes.
3. All bars are #4 with 6" spacing and shall have a minimum clearance of 1 1/2 inches unless otherwise noted on the plans.
4. When directed by the Engineer, a small opening may be required in the back of the inlet in order to drain a low area. Reinforcing bars will extend through the openings. No deductions in concrete quantities will be made for these openings.
5. No deductions will be made in pay length of curb, gutter, or curb and gutter through the inlet area.
6. Use Neenah R-3288 HV Inlet Frame with Two Piece Grate or approved equal. Inlet frame to be proof load tested to 40,000 lbs. on unsupported side.
7. Reinforcing bars shall be cut or bent around pipes. No deduction in concrete quantities shall be made for pipe openings.
8. The vanes of the grate shall be oriented with respect to the flow arrows shown on the plans.
9. DEETER FOUNDARY, Inc. casting No. 2442/43 with style H grate is an approved equal to NEENAH castings specified. Inlet drawing is based on NEENAH castings and concrete walls and supports will require some field modification to accommodate DEETER castings.



BENDING DIAGRAM

<p>THE CITY OF WICHITA</p>	<p>DOUBLE TYPE II INLET OPENING 6" x 4'-10 1/8"</p>	
	<p>M. E. LINDEBAK P.E. - CITY ENGINEER</p>	
<p>CITY ENGINEER'S OFFICE CITY HALL - SEVENTH FLOOR 455 NORTH MAIN STREET WICHITA, KANSAS 67202 (316) 268-4007 (316) 268-4114 FAX</p>	<p>PROJECT NUMBER</p>	<p>INDEX CODE</p>
<p>DATE MAR 98</p>	<p>SHEET 2 OF 2</p>	