

SRB

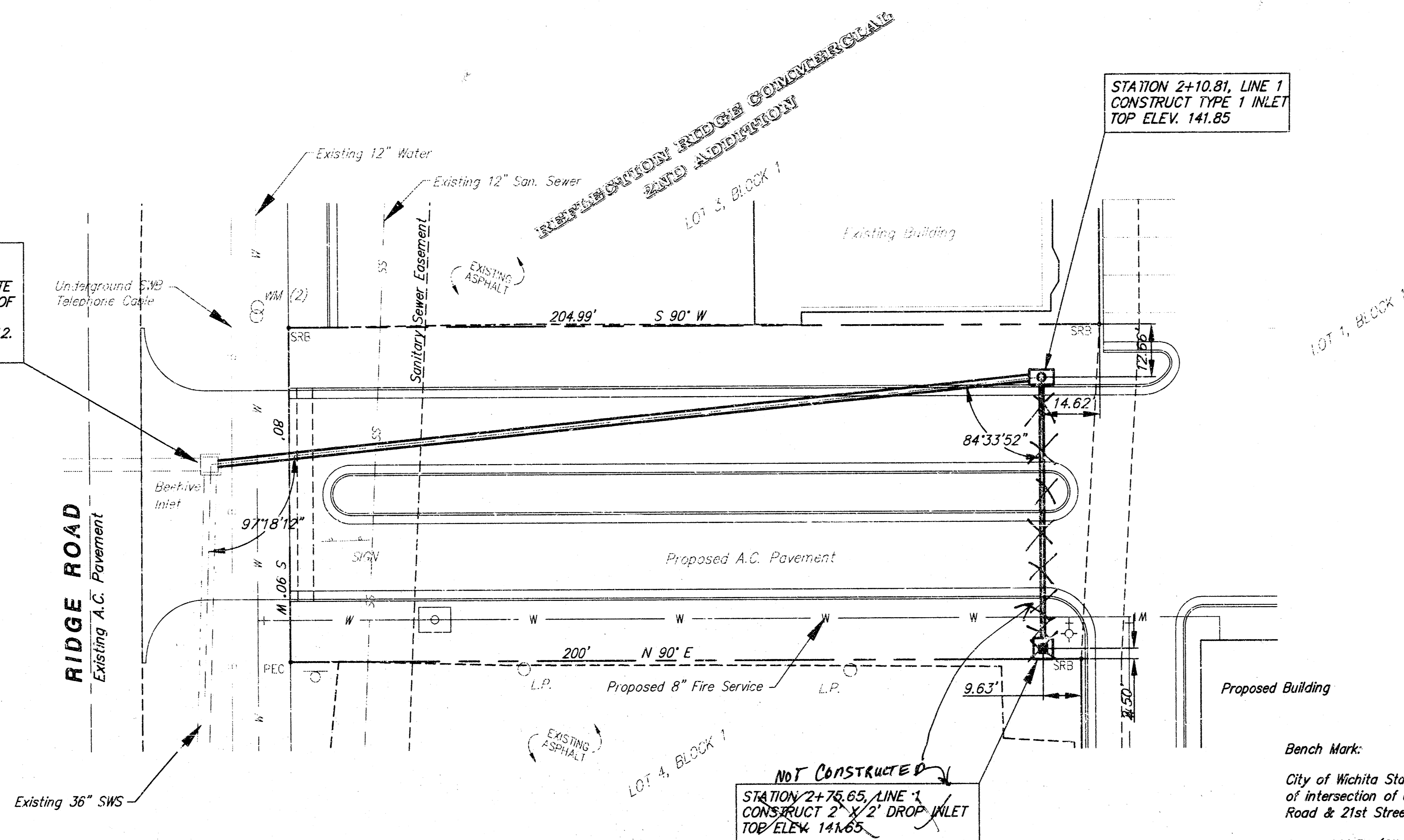
SCALE
1" = 20' Plan
1" = 5' Profile (Vert.)

DRAINAGE CALCULATIONS

Inlet Sta. 2+75.65
Area = 0.05 acres
 $C_s = 0.68$
 $Q_{100} = 0.76$
 $I_s = 4.56$ in/hr
 $Q_s = 0.2$ cfs
 $Q_{100} = 0.3$ cfs

Inlet Sta. 2+10.81
Area = 1.66 acres
 $C_s = 0.87$
 $Q_{100} = 0.89$
 $I_s = 4.56$ in/hr
 $Q_s = 6.6$ cfs
 $Q_{100} = 10.9$ cfs

STATION 0+00, LINE 1
CONNECT TO EXISTING INLET.
REMOVE EXISTING BEEHIVE GRATE
& FRAME. INSTALL STD. CITY OF
WICHITA MH COVER & FRAME.
ADJUST MANHOLE TOP TO 141.12.
BEGIN 18" RCP WEST.



GENERAL NOTES

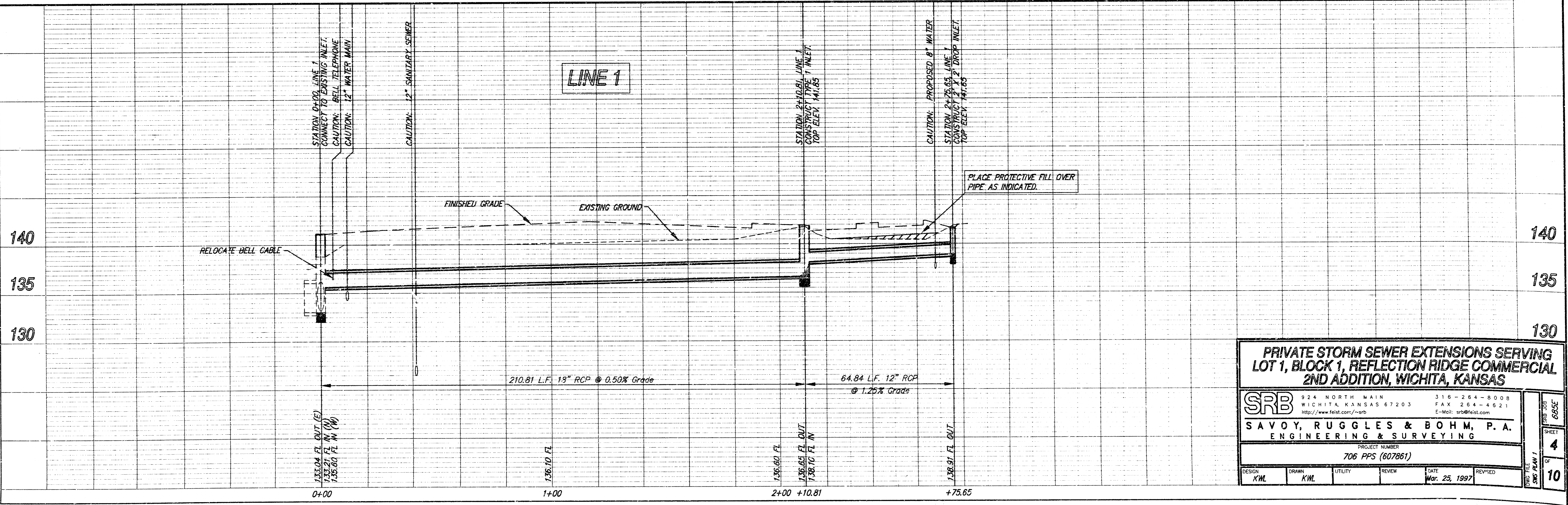
- All work on this project shall conform to the Standard Specifications for Storm Sewer Construction of the City of Wichita, except as noted.
- Locating Dimensions are to center of new inlet.
- All areas within public right-of-way which may be disturbed by Contractor's operations shall be restored in accordance with City of Wichita Administrative Regulation AR-7a.
- The Contractor shall notify Kansas One-Call (687-2470) a minimum of forty-eight (48) hours prior to any excavation.
- The Contractor shall be responsible for preserving property irons. The Contractor will be required to re-establish any property irons which are damaged or destroyed by his construction operations. Such irons shall be re-established by a licensed land surveyor in accordance with state laws.
- Traffic will not be affected by construction of this project.
- The Contractor shall be responsible for cost and coordination for relocation of Southwestern Bell telephone cable.

APPROVED AS NOTED
BY CITY ENGINEER OF WICHITA

Sanitary Sewers _____
Storm Sewers VRH 5/7/97
Driveway Approaches _____
Water Mains _____
Paving _____

NOTE TO CONTRACTORS
Inspection and testing for this project are to be provided by a Licensed Consulting Engineering Firm under contract with the Owner/Developer. Said inspection to be in accordance with the City of Wichita standard construction engineering practices and certified by a Licensed Professional Engineer. No work shall be performed in dedicated easements or public right-of-way by the Contractor without such inspection, nor shall any work be commenced without written authorization by the City Engineer.

Bench Mark:
City of Wichita Std. Disc 61' E & 66' N
of intersection of centerlines, Ridge
Road & 21st Street North.
Elev. 142.34 (City Datum)



PRIVATE STORM SEWER EXTENSIONS SERVING
LOT 1, BLOCK 1, REFLECTION RIDGE COMMERCIAL
2ND ADDITION, WICHITA, KANSAS

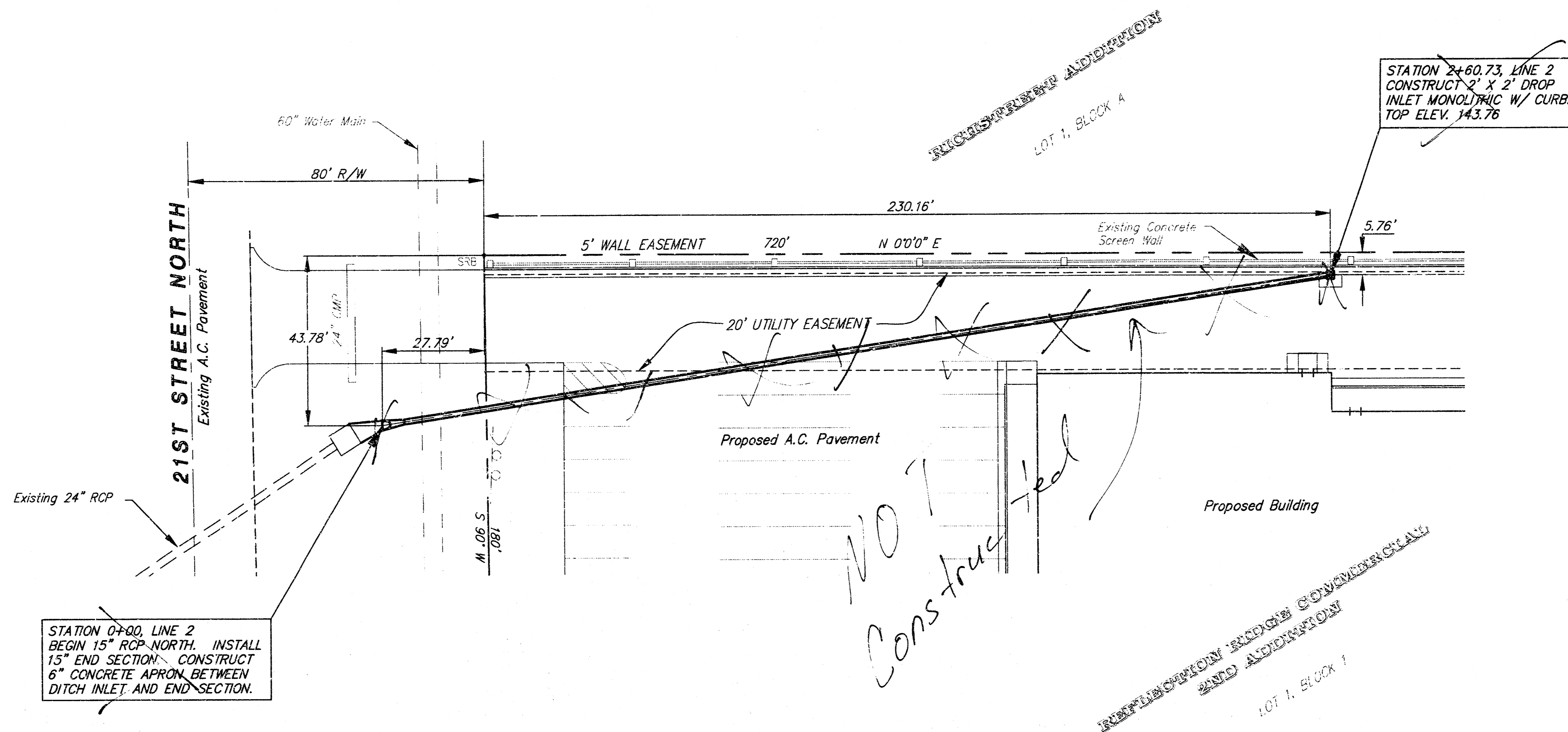
SRB
924 NORTH MAIN WICHITA, KANSAS 67203
316-264-8008 FAX 264-4621
http://www.feist.com/~srb E-Mail: srbs@feist.com

SAVOY, RUGGLES & BOHM, P. A.
ENGINEERING & SURVEYING

PROJECT NUMBER
706 PPS (607861)

DESIGN KWL	DRAWN KWL	UTILITY	REVIEW	DATE Mar. 25, 1997	REVISED
---------------	--------------	---------	--------	-----------------------	---------

SHEET 4 OF 10



SCALE
1" = 20' Plan
1" = 5' Profile (Vert.)

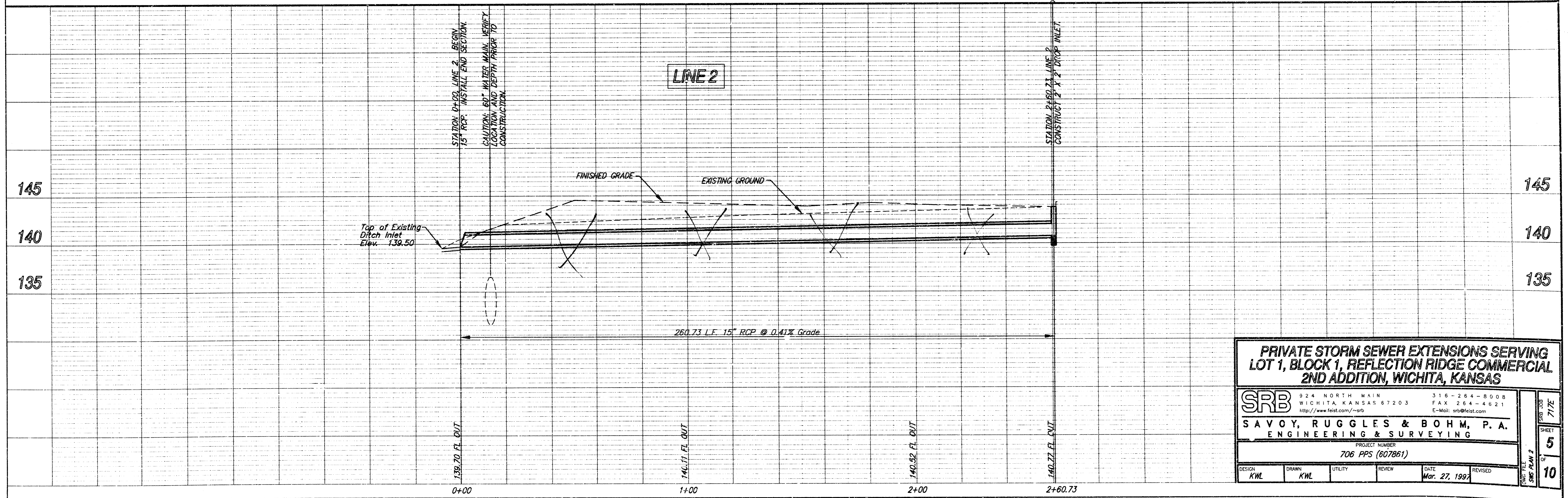
DRAINAGE CALCULATIONS

Area = 0.72 acres
 $C_s = 0.86$
 $C_{100} = 0.91$
 $I_s = 4.56$ in/hr
 $I_{100} = 7.37$ in/hr
 $Q_s = 2.8$ cfs
 $Q_{100} = 4.8$ cfs

Bench Mark:

City of Wichita Std. Disc. 61' E & 66' N
of intersection of centerlines, Ridge
Road & 21st Street North.

Elev. 142.34 (City Datum)



PRIVATE STORM SEWER EXTENSIONS SERVING LOT 1, BLOCK 1, REFLECTION RIDGE COMMERCIAL 2ND ADDITION, WICHITA, KANSAS

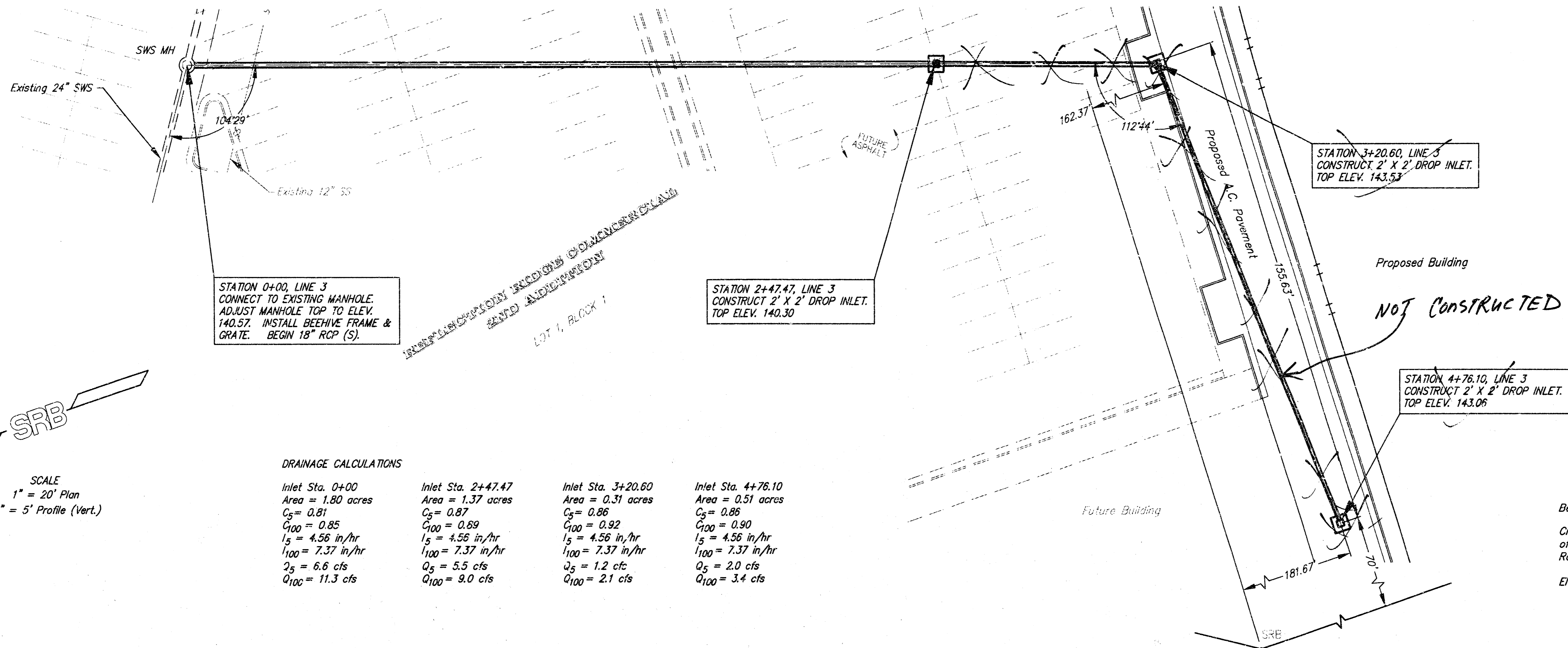
SRB 824 NORTH MAIN WICHITA, KANSAS 67203
316-264-5088 FAX 264-4621
http://www.feist.com/~srb E-Mail: srb@feist.com

SAVOY, RUGGLES & BOHM, P. A.
ENGINEERING & SURVEYING

PROJECT NUMBER
706 PPS (607861)

DESIGN	DRAWN	UTILITY	REVIEW	DATE	REVISED
KWL	KWL			Mar. 27, 1999	

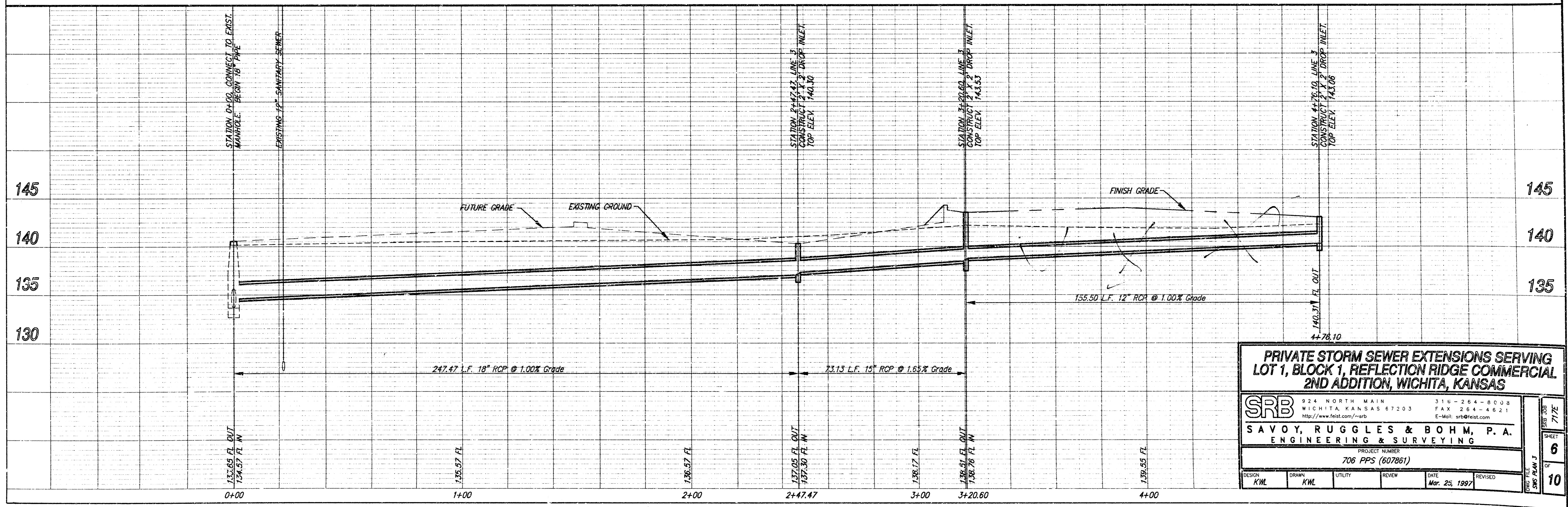
DATE PLOTTED: 7/7/02
SHEET 5 OF 10
DRAWN FILE: SRB DRAW 2

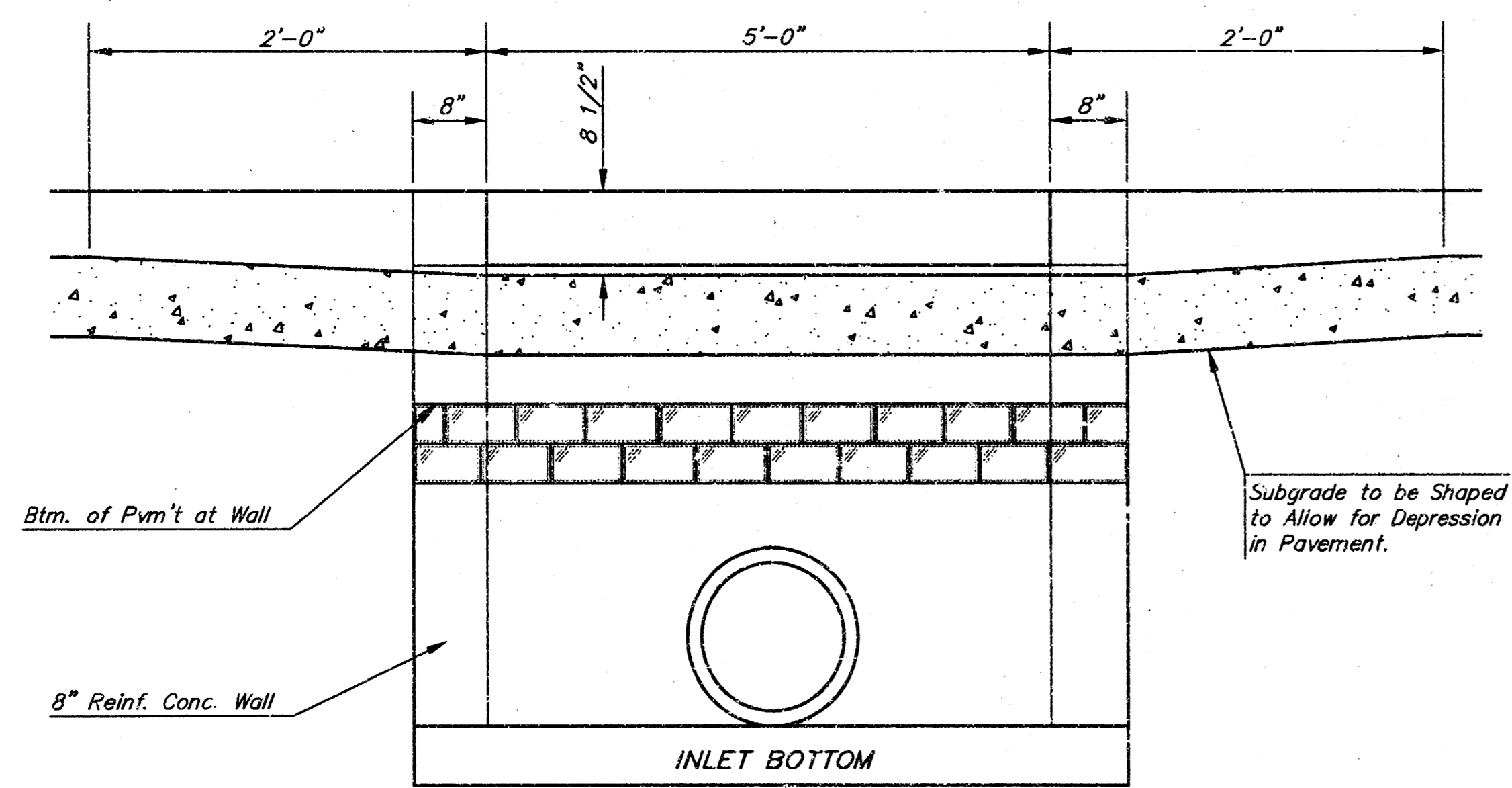
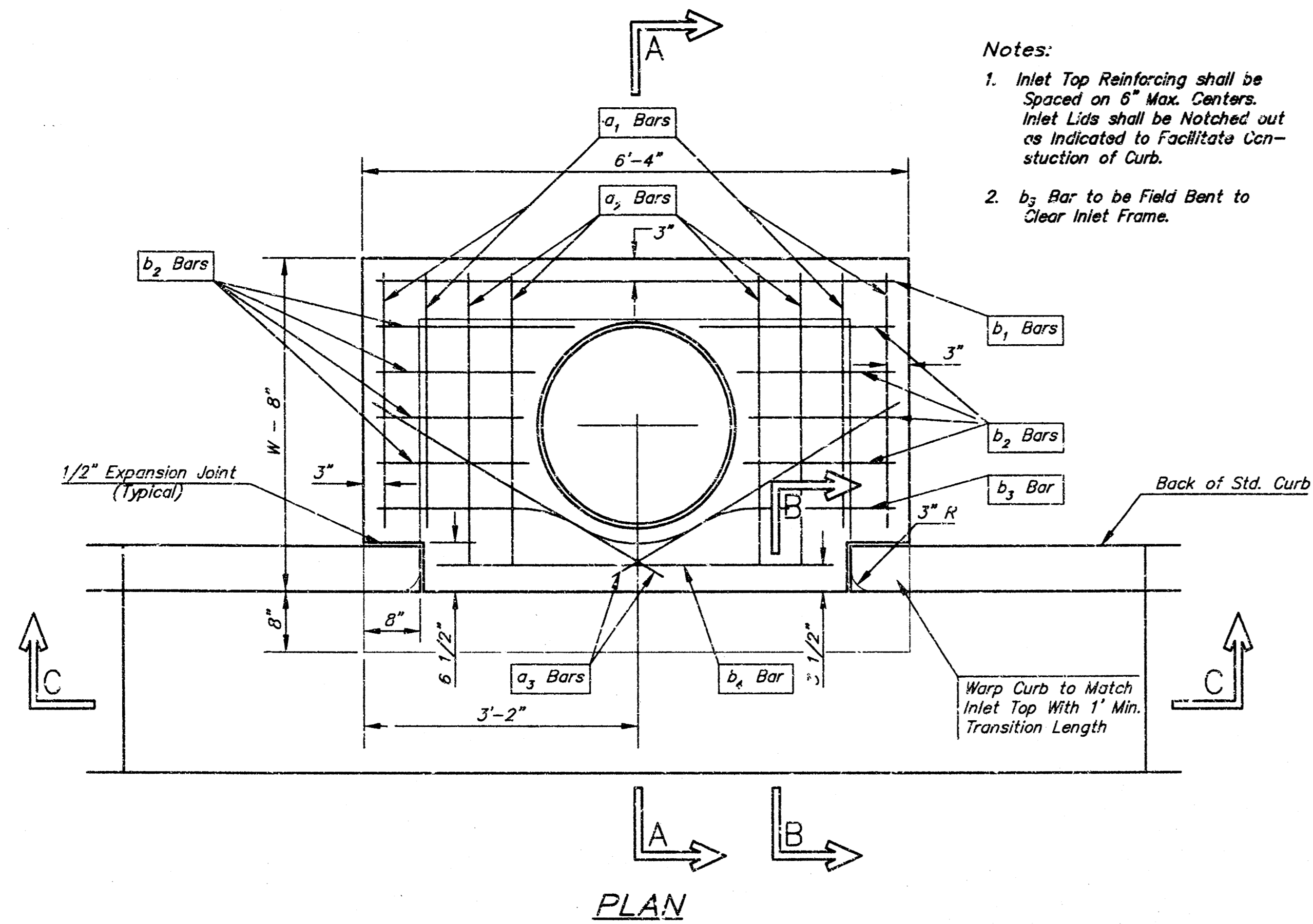


DRAINAGE CALCULATIONS

Inlet Sta.	Area	C _s	C ₁₀₀	I _s	I ₁₀₀	Q _s	Q ₁₀₀
0+00	1.80 acres	0.81	0.85	4.56 in/hr	7.37 in/hr	6.6 cfs	11.3 cfs
2+47.47	1.37 acres	0.87	0.69	4.56 in/hr	7.37 in/hr	5.5 cfs	9.0 cfs
3+20.60	0.31 acres	0.86	0.92	4.56 in/hr	7.37 in/hr	1.2 cfs	2.1 cfs
4+76.10	0.51 acres	0.86	0.90	4.56 in/hr	7.37 in/hr	2.0 cfs	3.4 cfs

Bench Mark:
City of Wichita Std. Disc 61' E & 66' N
of intersection of centerlines, Ridge
Road & 21st Street North.
Elev. 142.34 (City Datum)





SECTION C-C

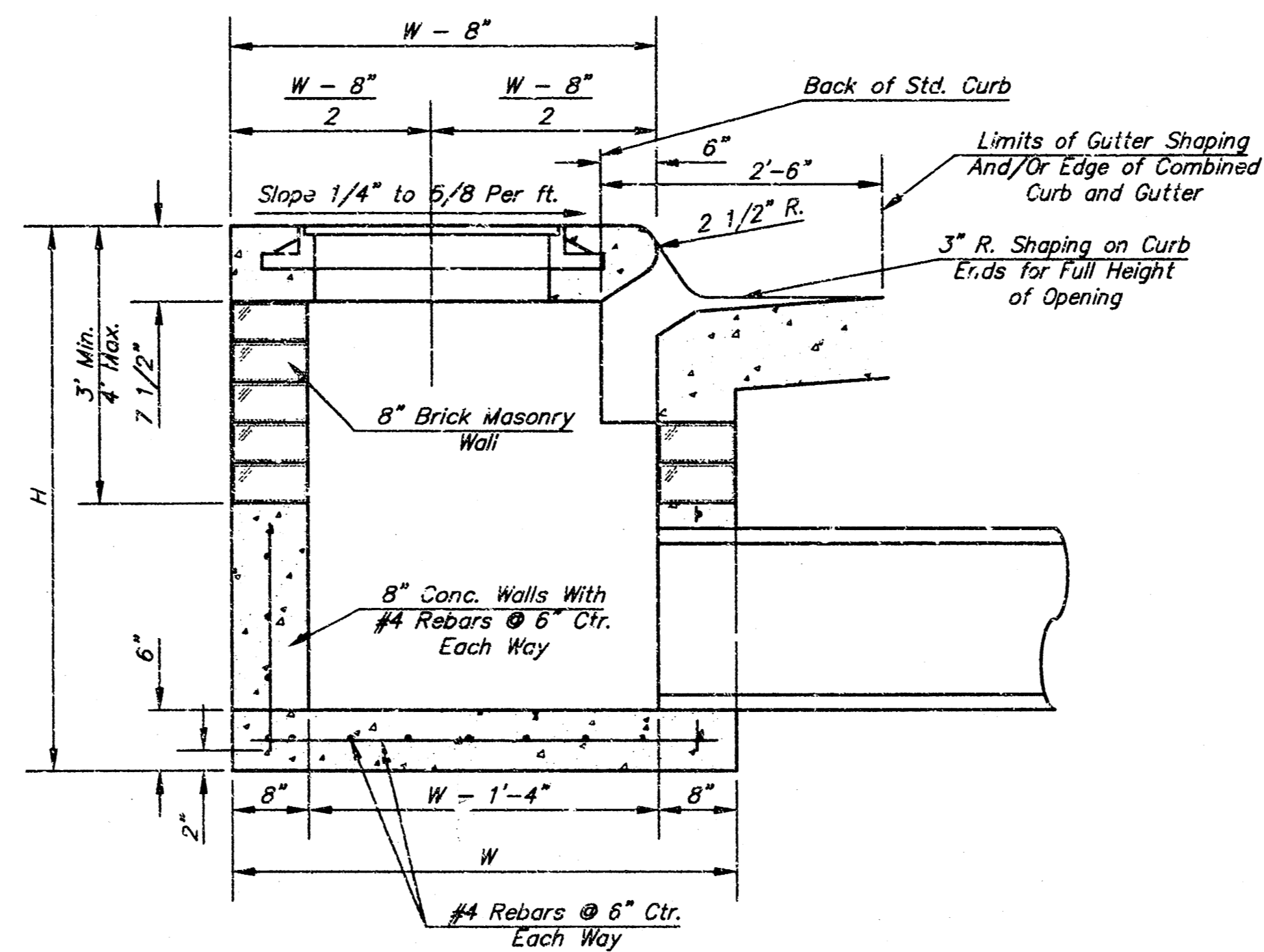
STEEL SCHEDULE

BAR	b ₁										Wt. Lbs.	
	a ₁	a ₂	a ₃	6'-4"	6'-5"	6'-6"	6'-7"	6'-8"	6'-9"	6'-10"		
NUMBER	4	4	2	1	3	5	7	9	6	1	1	
SIZE	#4	#4	#4	#4	#4	#4	#4	#4	#4	#4	#6	
LENGTH	W=4'-4"	5'-7"	6'-7"	4'-0"	6'-1"	-	-	1'-9"	6'-2"	4'-8"	60±	
	W=5'-4"	7'-7"	8'-7"	5'-0"	6'-1"	-	-	1'-9"	6'-2"	4'-8"	81±	
	W=6'-4"	9'-7"	10'-7"	6'-0"	-	6'-1"	-	1'-9"	6'-2"	4'-8"	101±	
	W=7'-4"	11'-7"	12'-7"	7'-0"	-	-	6'-1"	1'-9"	6'-2"	4'-8"	121±	
	W=8'-4"	13'-7"	14'-7"	8'-0"	-	-	-	6'-1"	1'-9"	6'-2"	4'-8"	141±

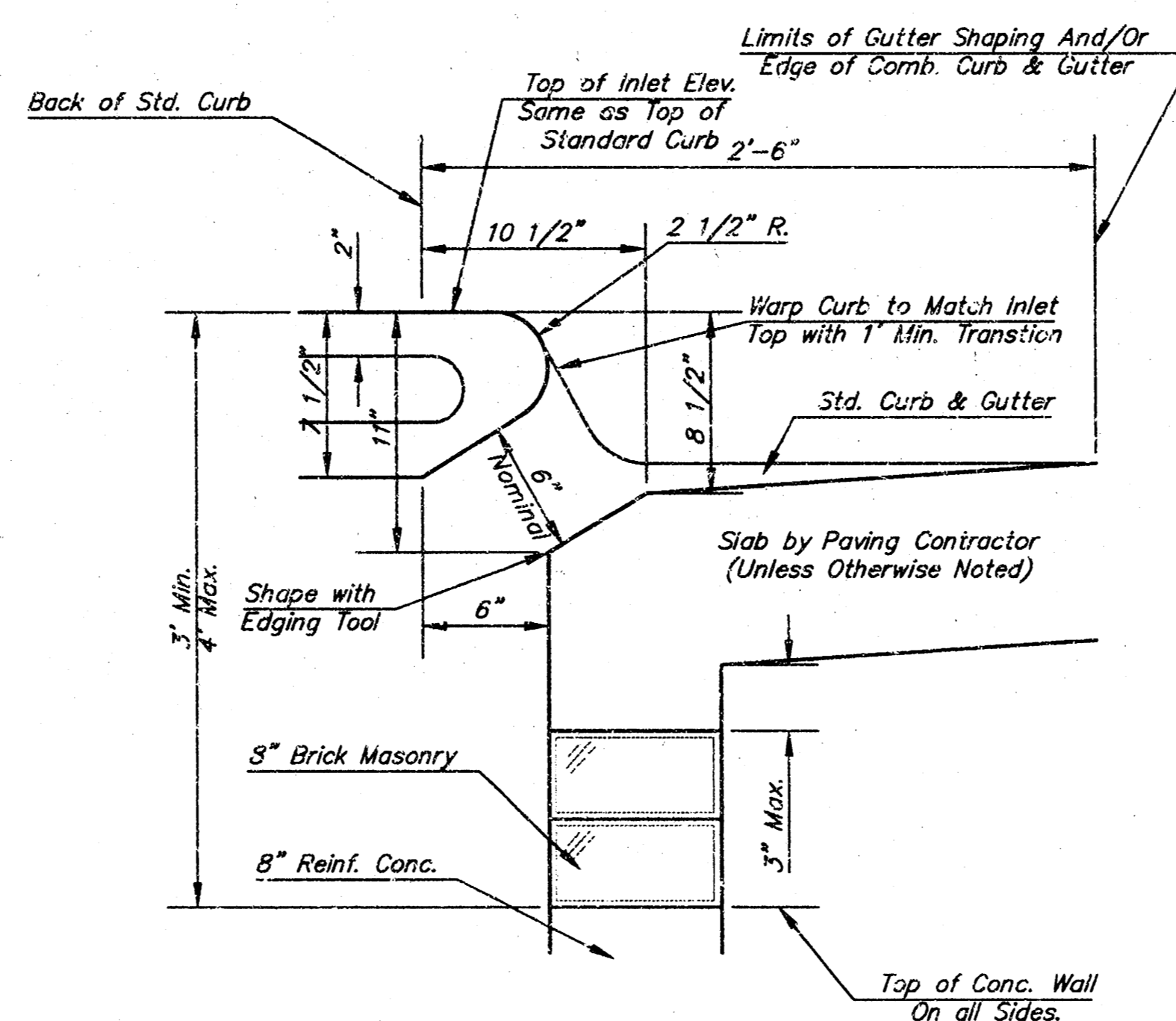
Note: a₃ Bars to be Placed Approx. 2" Below Top of Inlet Cover.

STANDARD CURB INLET PRECAST TOPS

W	PRE-CAST TOP SIZE	PIPE SIZE	CU. YD. CONC.
4'-4"	5'-8" 6'-4" 7 1/2"	21" & SMALLER	0.38±
5'-4"	4'-8" 5'-4" 7 1/2"	24" & 30"	0.51±
6'-4"	5'-8" 6'-4" 7 1/2"	36" & 42"	0.64±
7'-4"	6'-8" 6'-4" 7 1/2"	48" & 54"	0.77±
8'-4"	7'-8" 6'-4" 7 1/2"	60" & 66"	0.90±



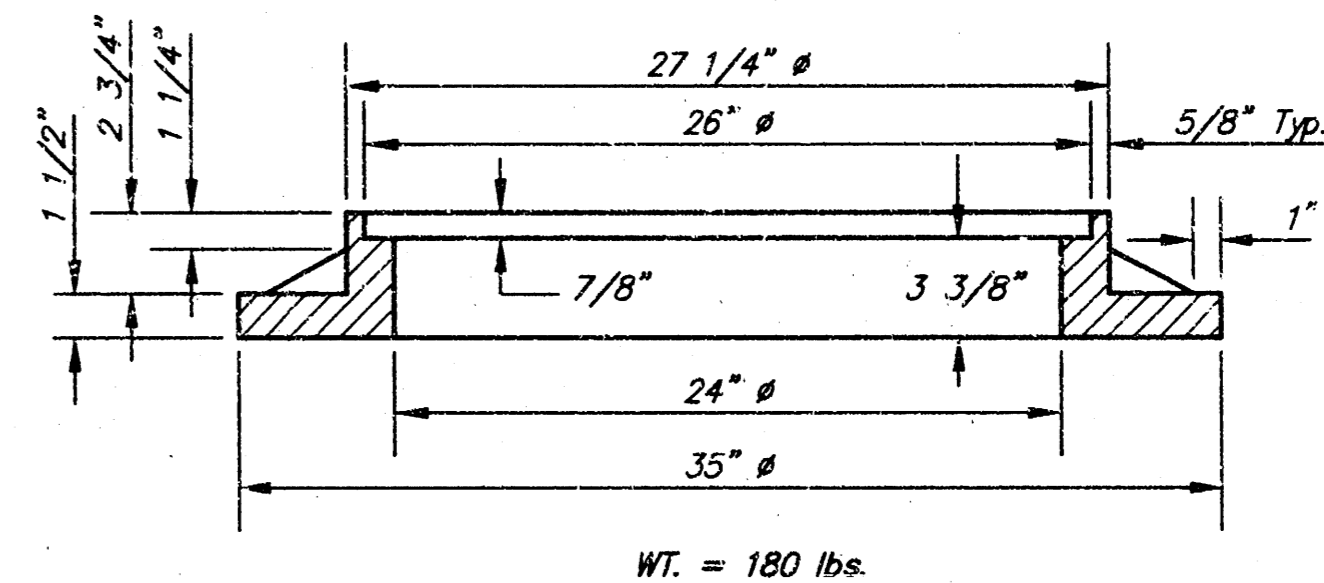
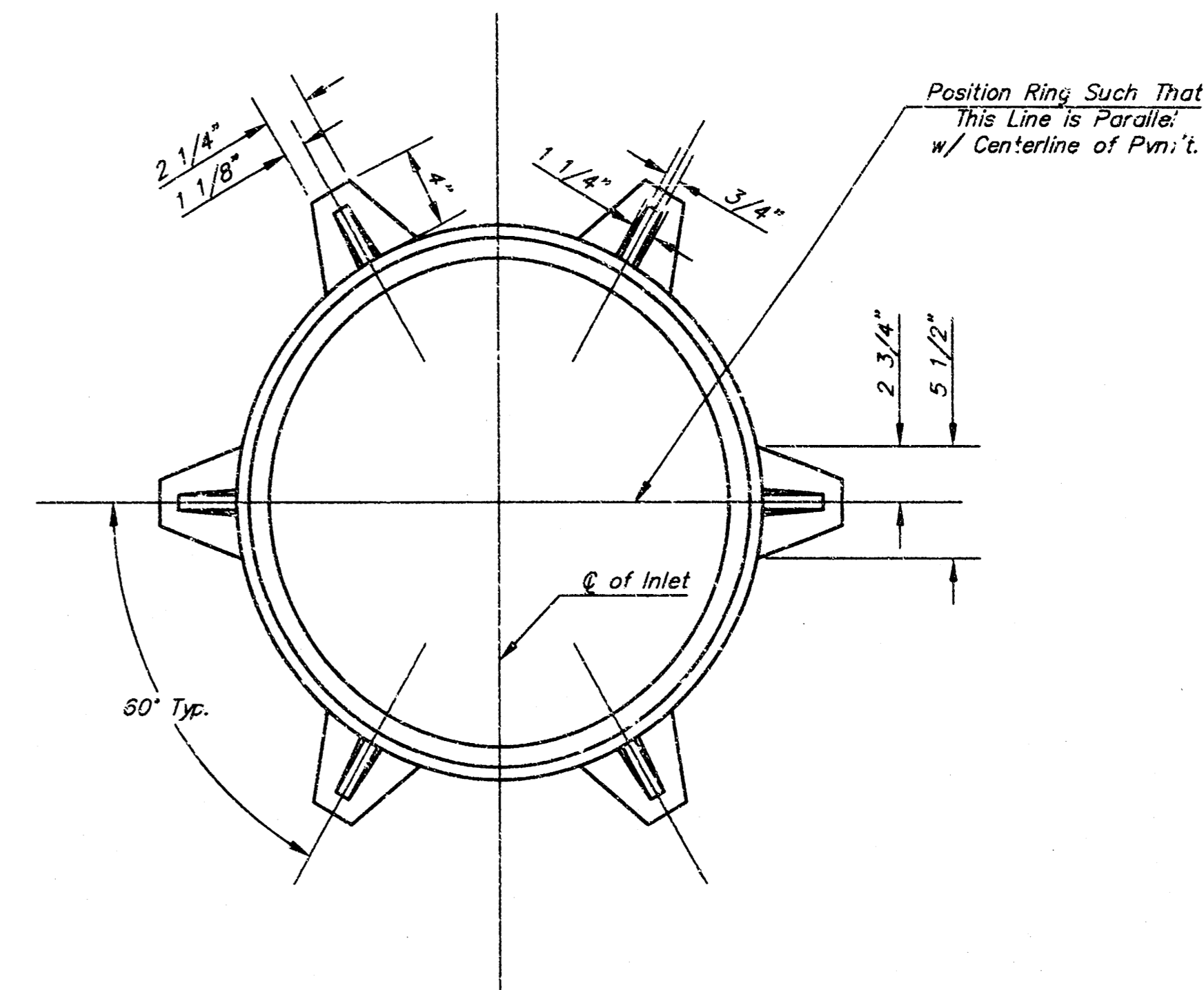
SECTION A-A



SECTION B-B

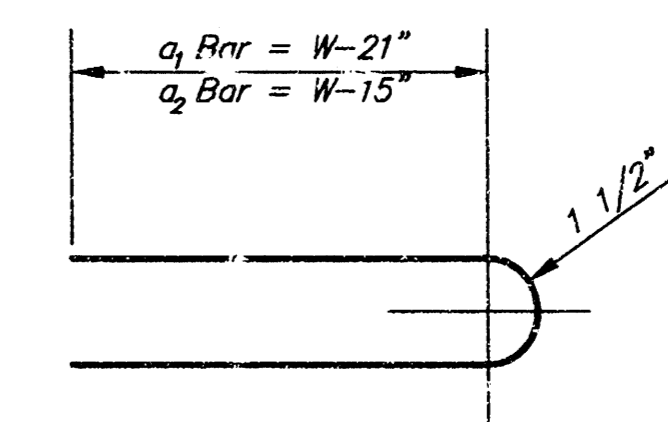
GENERAL NOTES

- Concrete tops to be installed on thin mortar cushion to insure full support along brick walls. Concrete tops may be cast in place or precast. Concrete used for inlet construction shall be concrete pavement mix.
- Contractor shall have the option of constructing 8" brick masonry walls between the concrete inlet base and top on this inlet when W=6'-4" and H=7'-0" or less.
- Inlet invert shall be shaped with 8 sack sand mix concrete to create flow channels and to increase hydraulic efficiency such that the inlet will be self cleaning between all inlet and/or outlet pipes.
- The ends of all pipes installed in inlets shall be cut off flush with the inside face of the inlet wall.



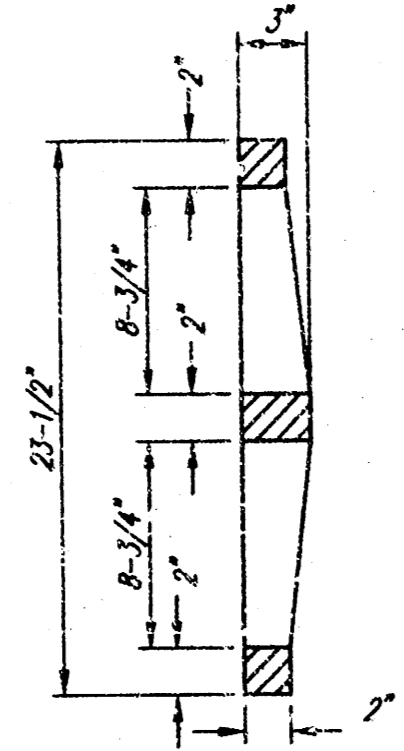
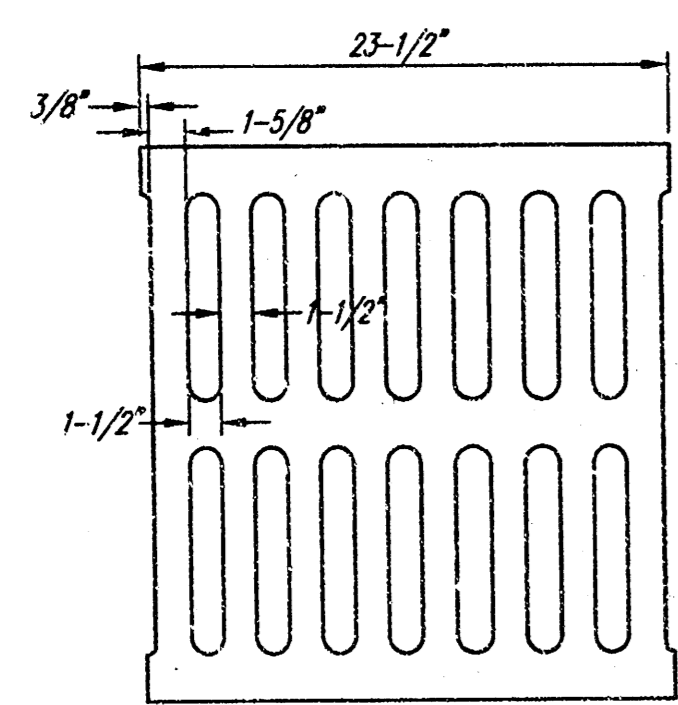
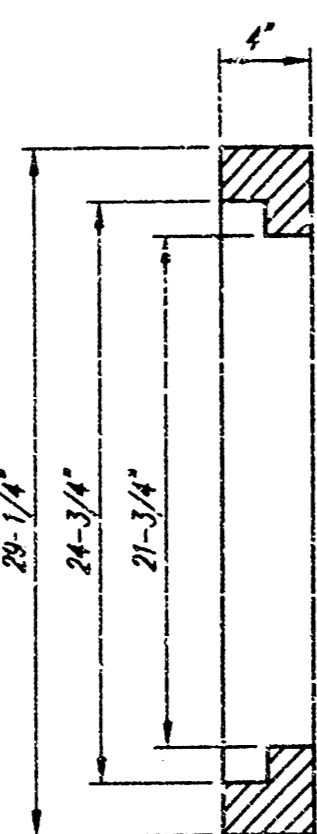
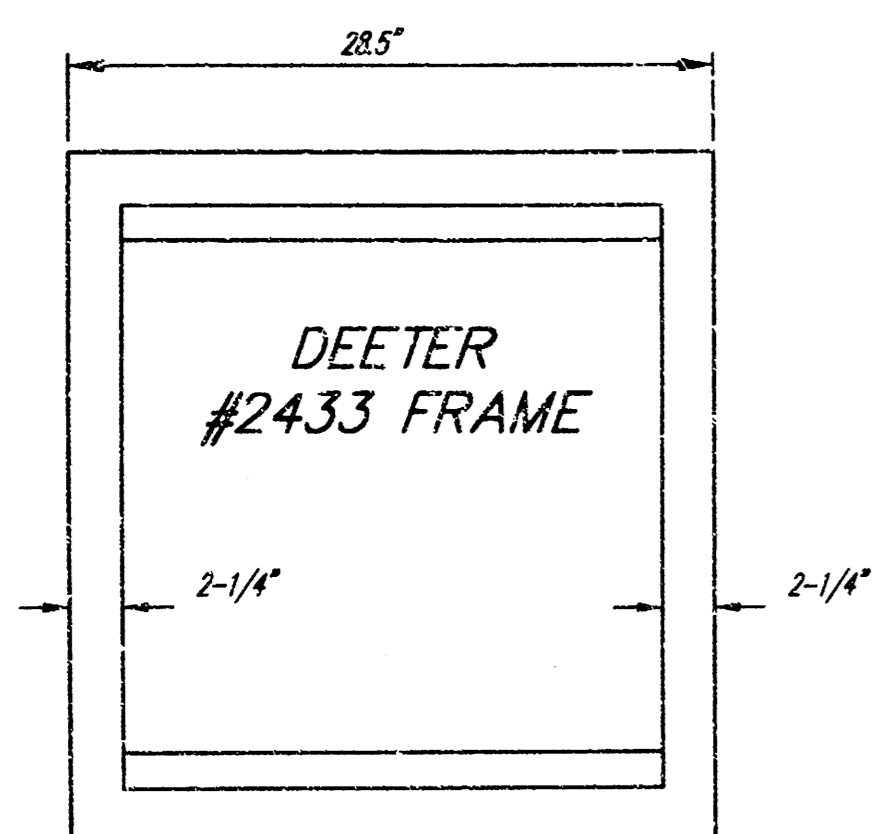
MANHOLE RING AND COVER

*See City of Wichita Standard Manhole Ring and Cover Detail Sheet for Cover Details to Be Used With Inlet Frame.



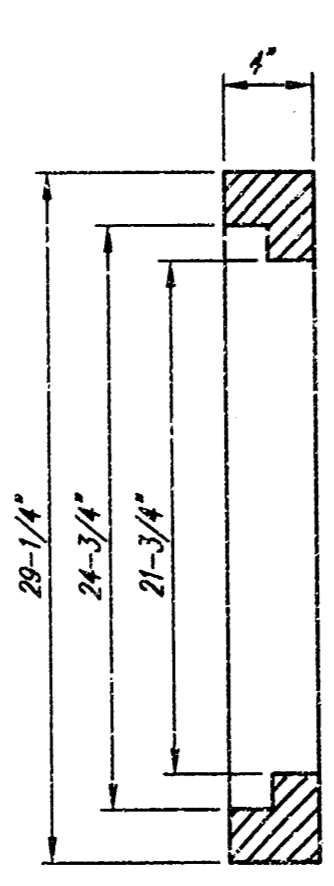
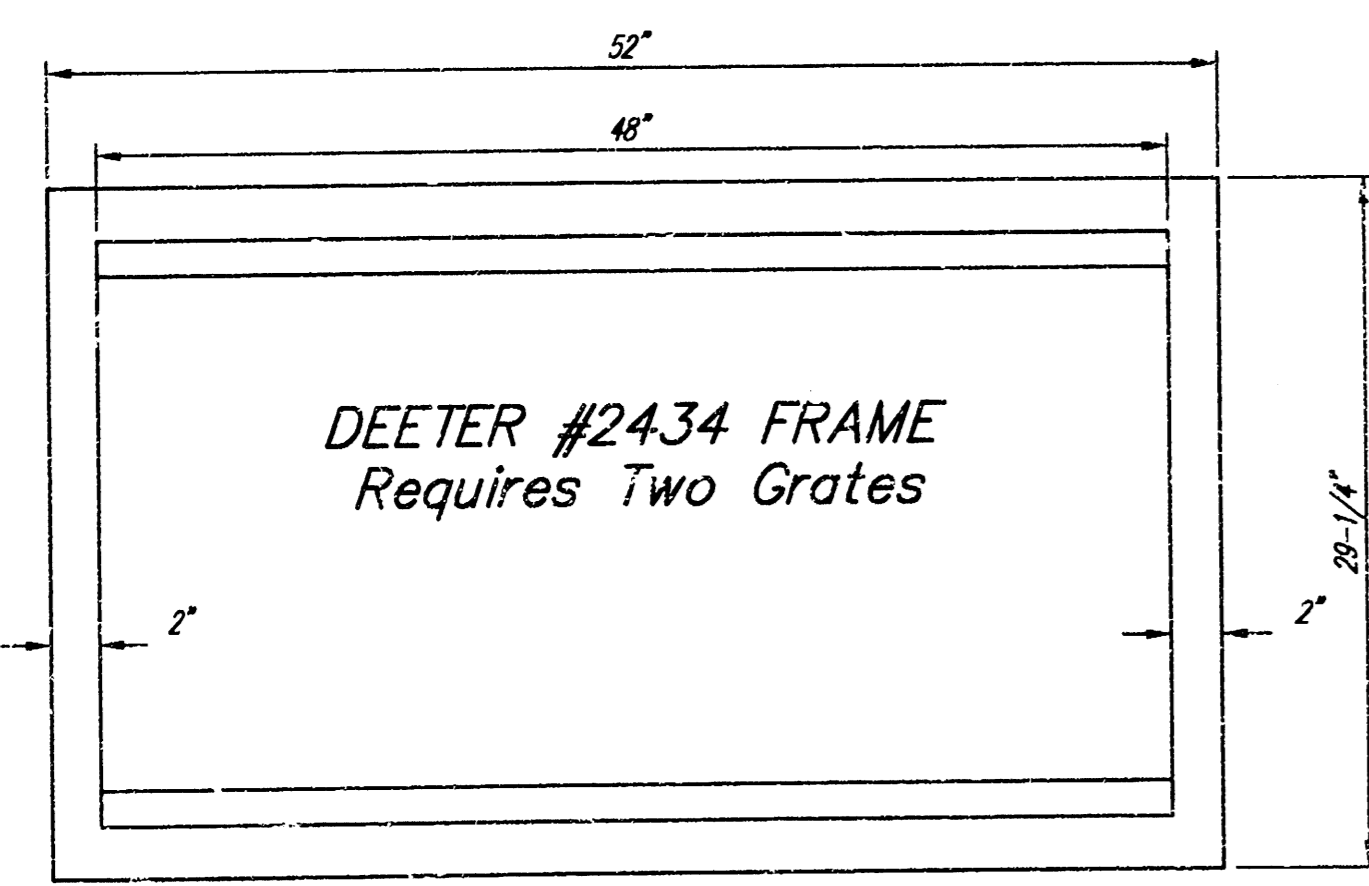
BENDING DIAGRAM

<p>THE CITY OF WICHITA CITY HALL - SEVENTH FLOOR 408 NORTH MAIN STREET WICHITA, KANSAS 67202 (316) 268-4501 (316) 268-4114 FAX</p>	<p>STANDARD TYPE 1 CURB INLET OPENING = 6"x5'-0"</p>	
	<p>M. E. LINDEBAK P.E. - CITY ENGINEER</p>	
<p>PROJECT NUMBER 706 PPS</p>	<p>INDEX CODE 607851</p>	
<p>DATE MAR 96</p>	<p>SHEET 7 OF 10</p>	



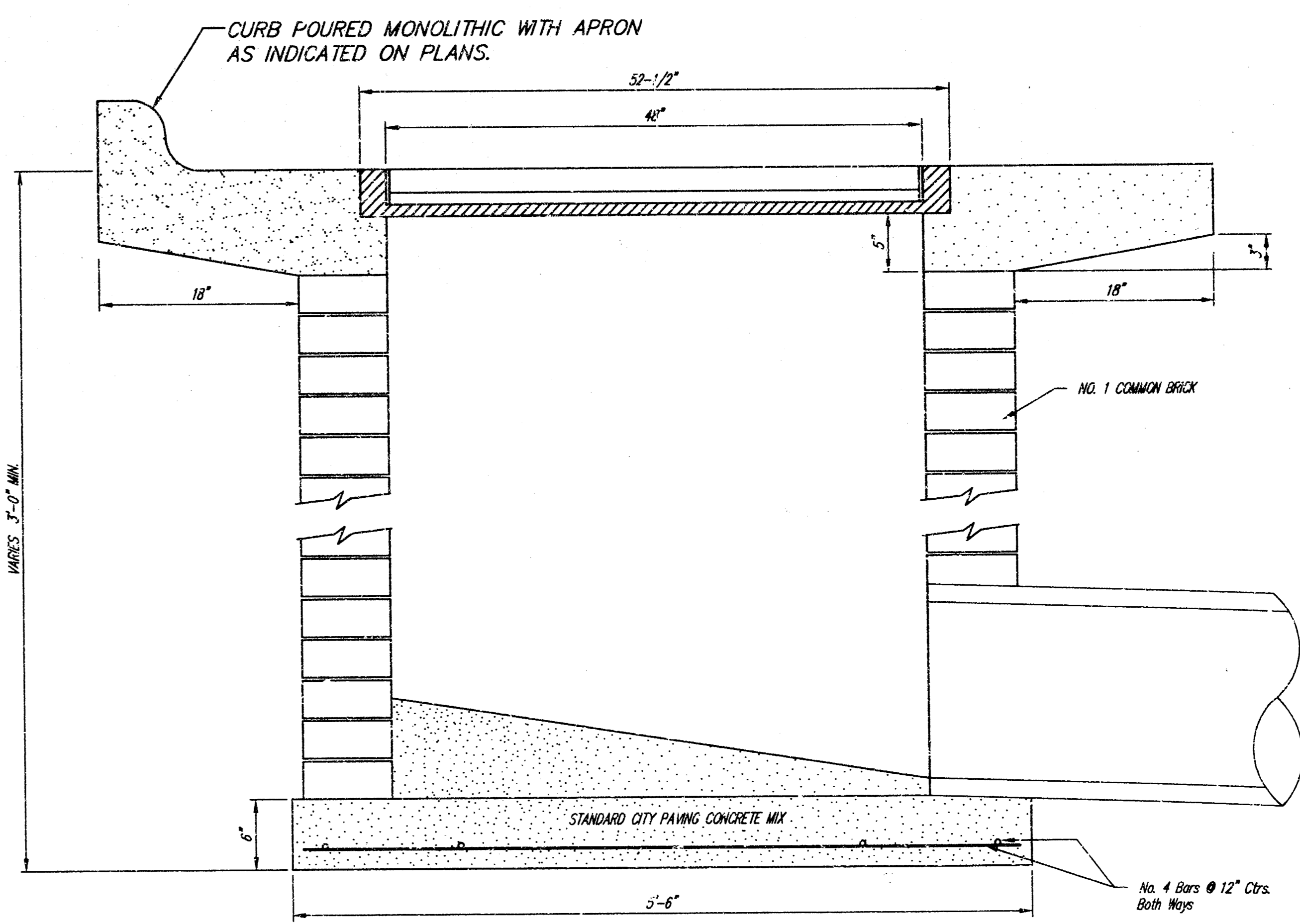
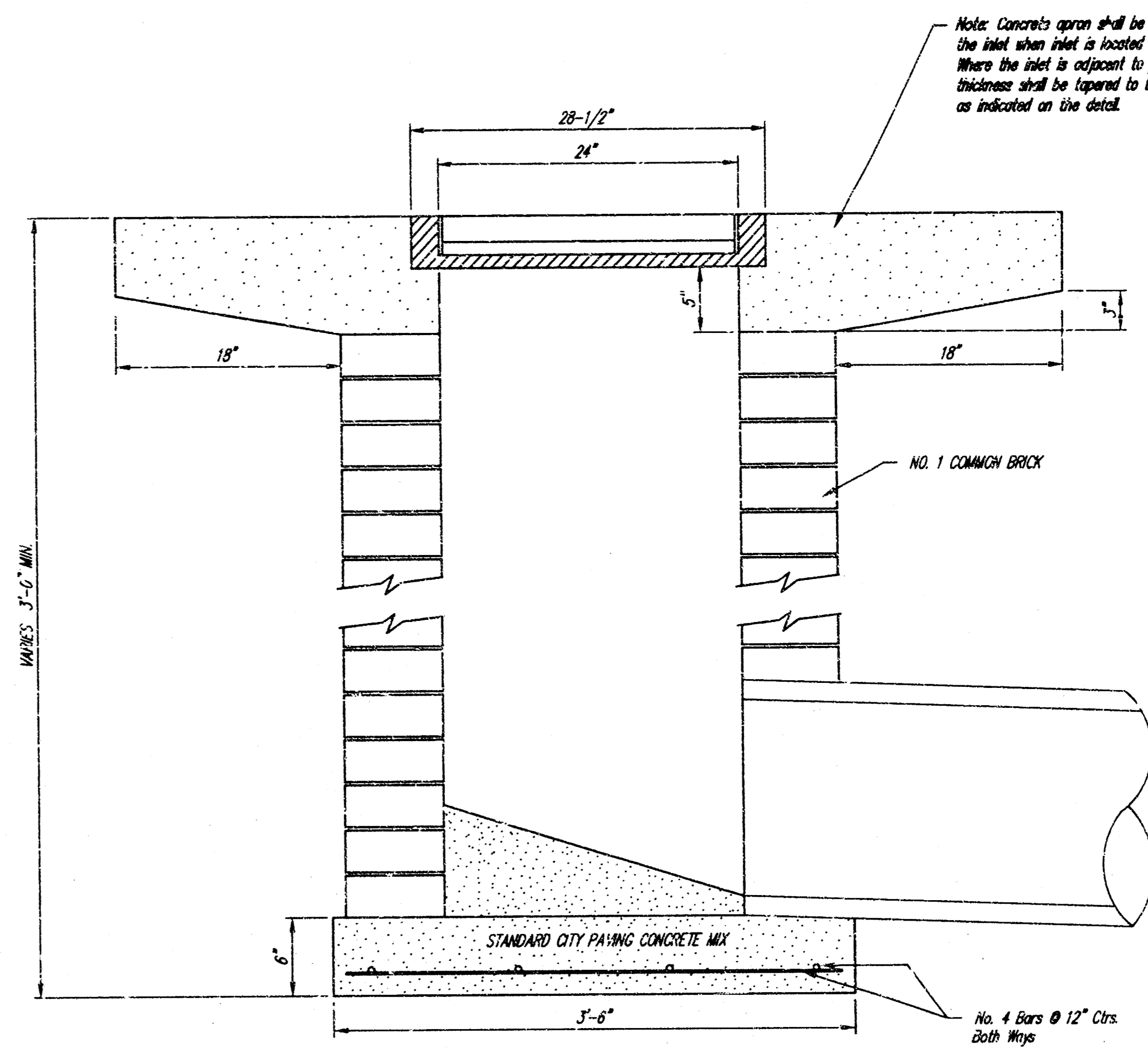
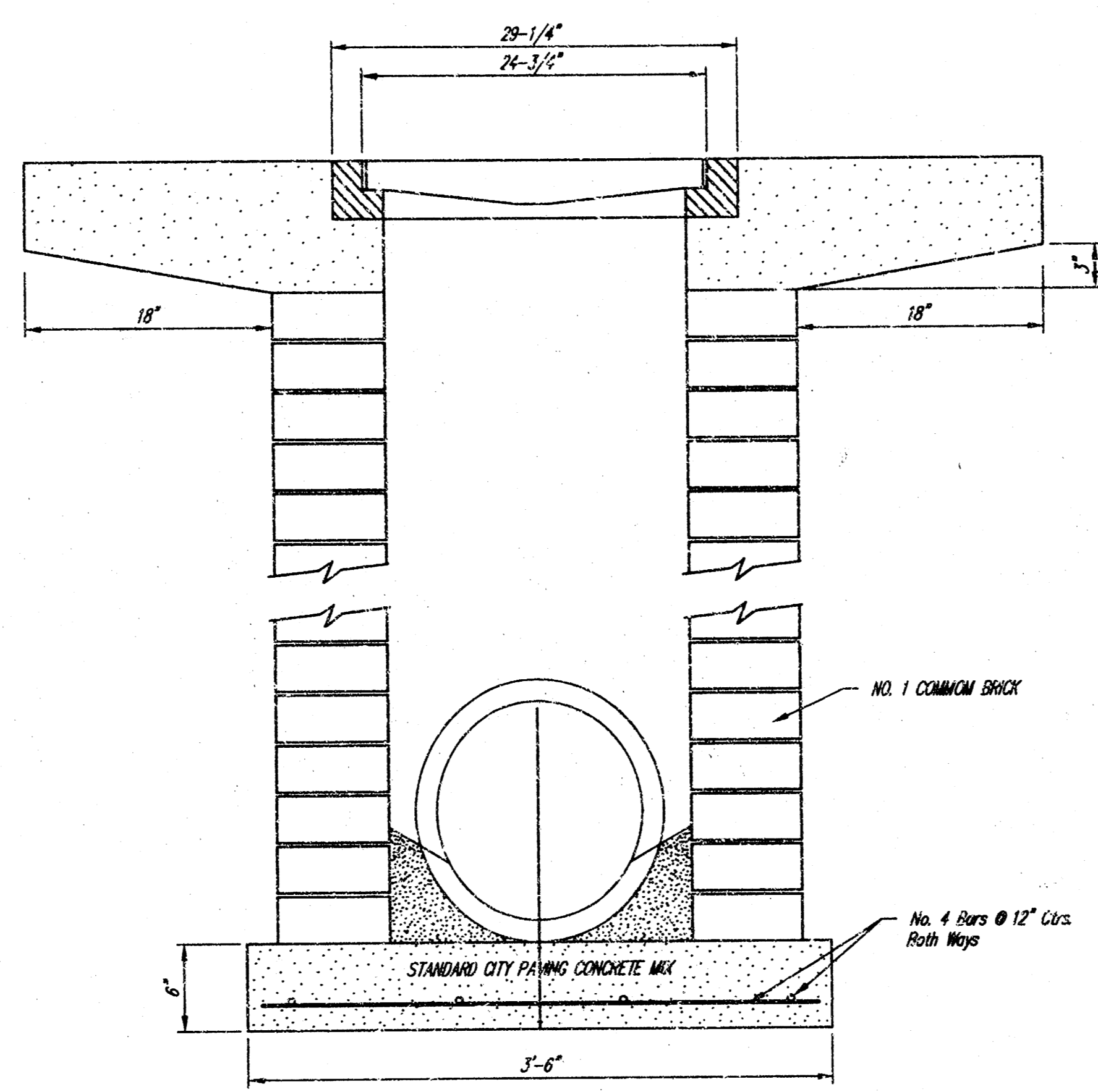
DEETER #2433 GRATE

24" x 24" Frame and Grate Detail



DEETER #2434 FRAME
Requires Two Grates

Double 24" x 24" Frame Detail



DROP INLET DETAILS		8
706 PPS (607851)	5-T-8-8	10