

STORMWATER SEWER IMPROVEMENTS to serve **Lot 1, Timber Ridge 4th Addition**

GENERAL NOTES:

1. Contractor will be required to provide notice to utility companies a minimum of twenty-four (24) hours prior to any excavation, as follows:

Kansas One-Call 687-2470

The Contractor must notify the following in case of an emergency:

Cablevision 262-4270
K.P.L. Gas Service Company 263-2061
Kansas Gas & Electric Company 383-8650
Peoples Nat. Gas Company 383-8600
Southwestern Bell Telephone Company 942-8350
City of Wichita Water Department 1-571-2611
City of Wichita Sewer Maintenance 268-4908
268-4071

2. Utility service lines, poles, valve boxes, meters, and etcetera are to be adjusted as necessary by others prior to construction unless the plans specifically call for their adjustment by the Contractor or unless the plans specifically identify a utility to be adjusted by its owner during construction. Existing utilities and their location, as shown on the plans, represent the best information obtainable for design. The contractor will be required to work around existing utilities with the right-of-way which do not conflict with proposed construction.

3. Rubble from the removal of miscellaneous structures and excess excavation which is to be wasted shall be disposed of on a site to be provided by the Contractor. These sites shall be approved by the Engineer as to suitability, appearance and site location. Locations that, in the opinion of the Engineer, will leave an unsightly appearance will not be approved. All disposal sites must be approved by the Kansas Department of Health and Environment. Material either stockpiled or disposed of in a flood plain would require a Kansas State Board of Agriculture permit. Any material dumped in waters of the United States or wetlands is subject to U.S. Corps. of Engineers permitting regulations. Any material buried or stockpiled beyond approved construction limits would require additional archaeological investigations unless buried in a previously approved borrow location.

4. Trees and shrubs in public right-of-way which are in direct conflict with proposed new construction shall be removed by the Contractor with the Engineer's approval. Trees and shrubs which are not in direct conflict with proposed new construction shall be saved and protected from damage.

5. The Contractor shall be responsible for preserving property irons. The Contractor will be required to re-establish any property irons which are damaged or destroyed by his construction operations. Such irons shall be re-established by a licensed land surveyor in accordance with state law.

6. All disturbed areas are to be seeded and mulched as follows:

SEED - Kansas Premium Fescue Blend - 8#/1000 Sq. Ft.
(Equal Parts of Olympic II, Bonanza, Apache, and Monarch Fescue Varieties)

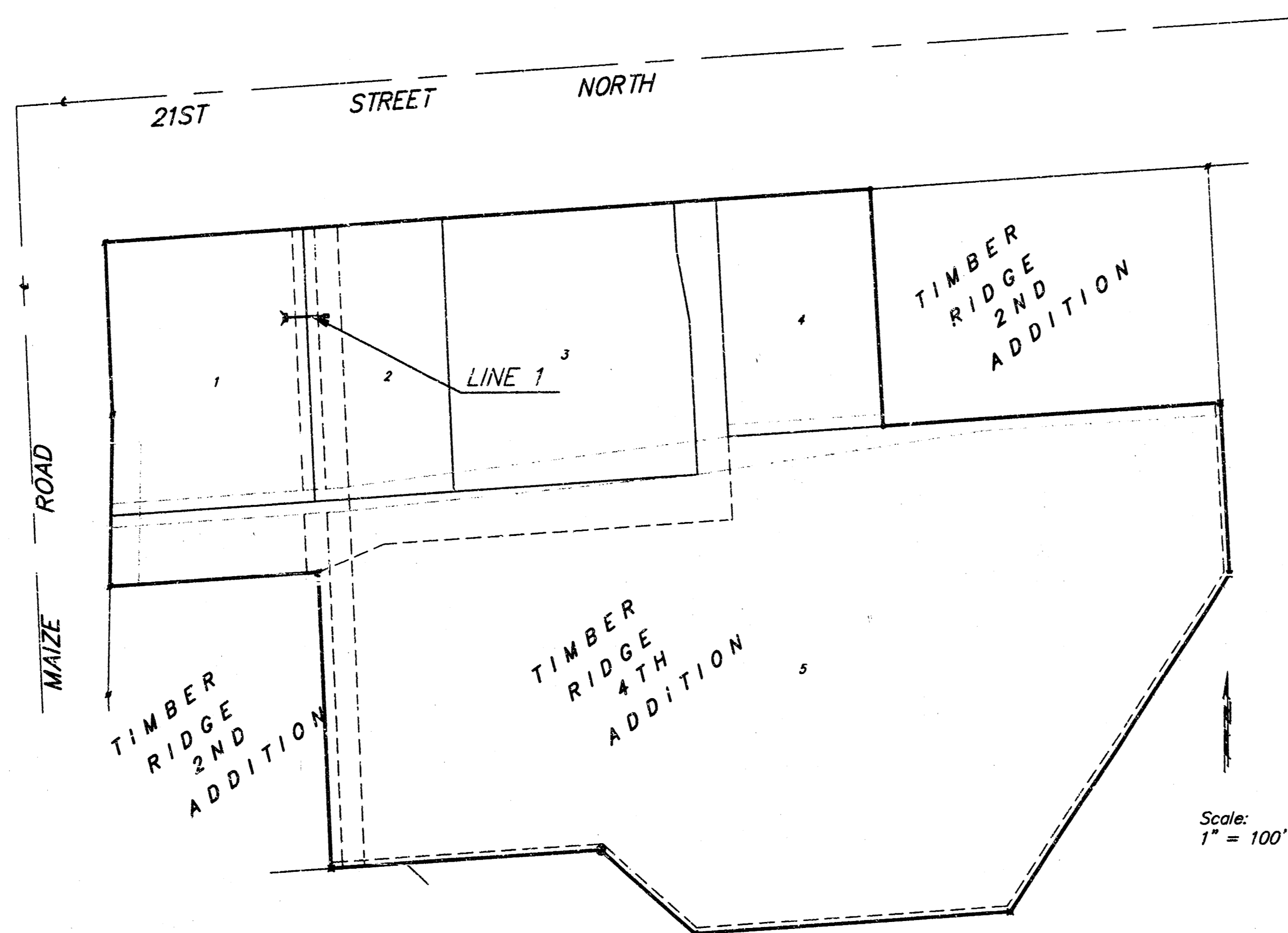
MULCH - 2 Tons of Prairie Hay/Acre

CITY OF WICHITA, KANSAS

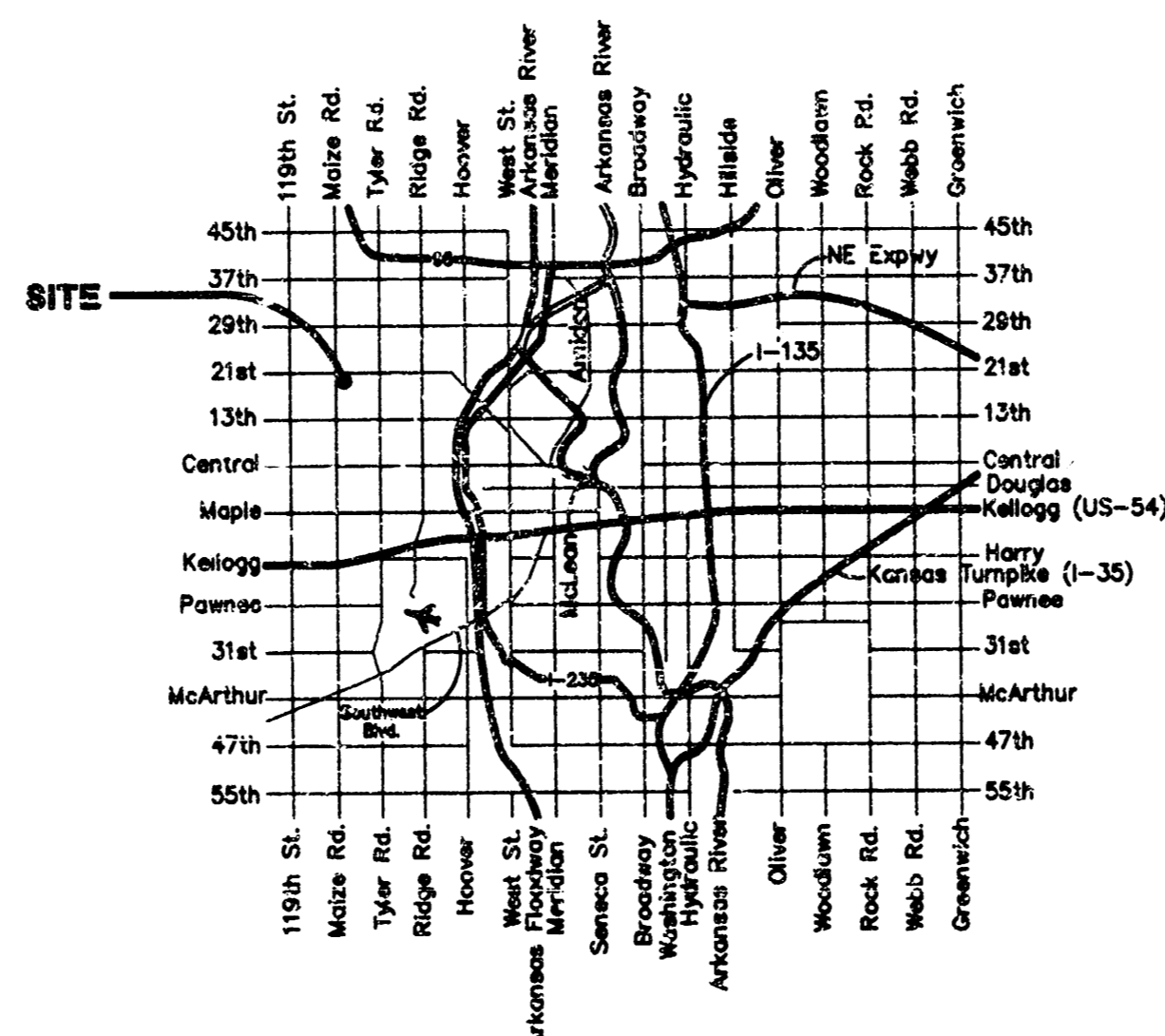
Michael E. Lindebak, P.E. City Engineer

Private Project Number

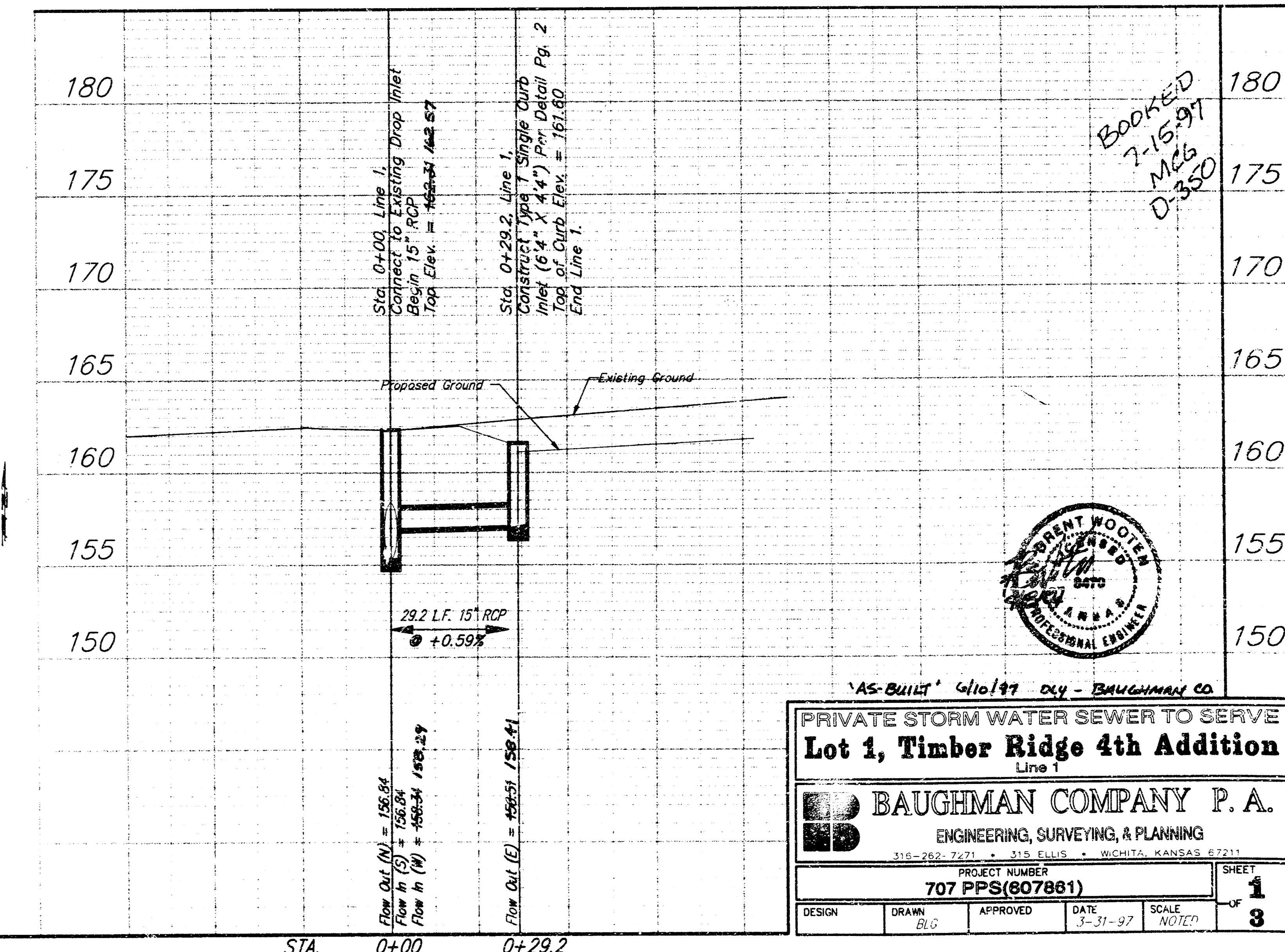
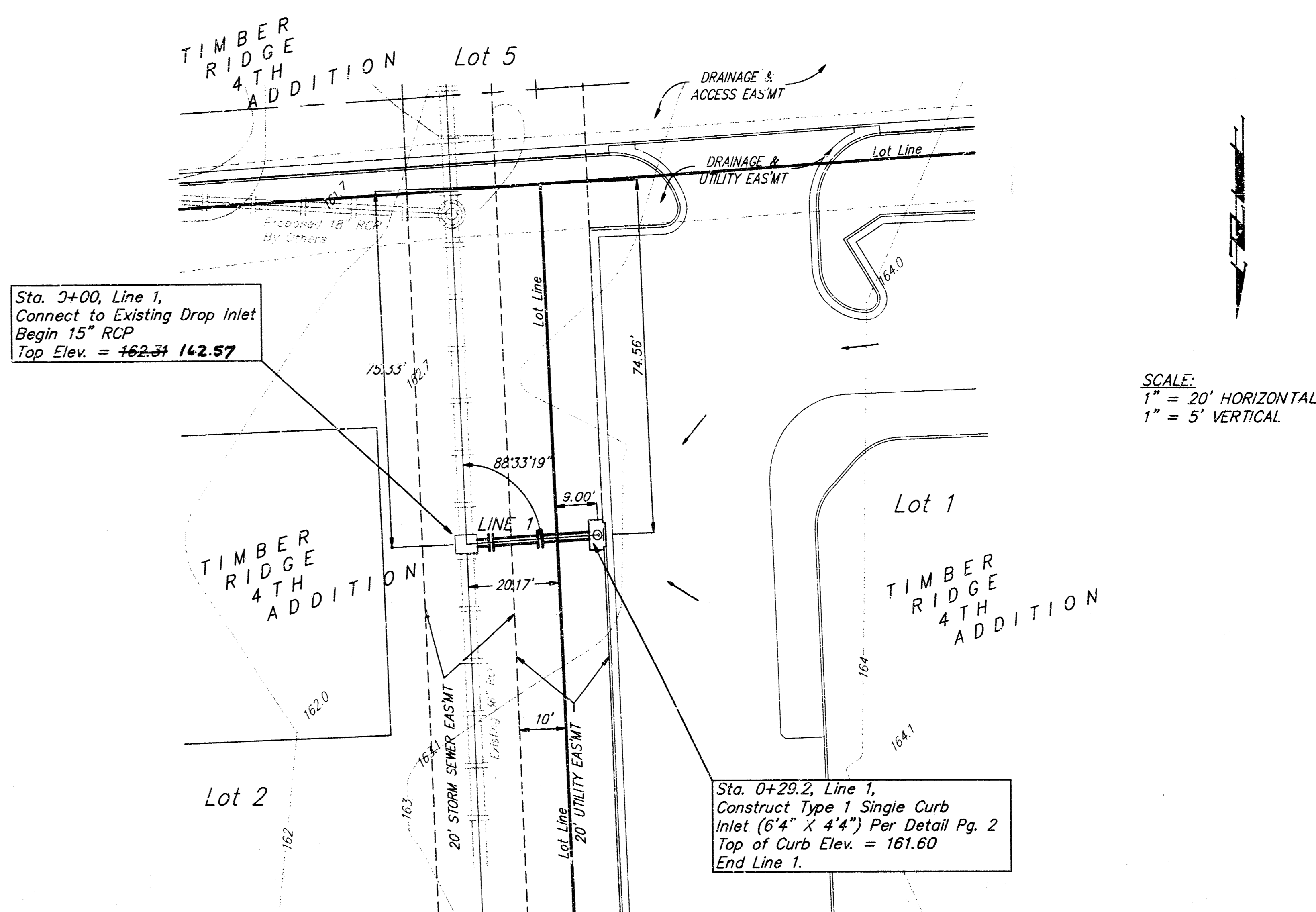
707 PPS (607861)



Project Area



Vicinity Map



**APPROVED AS NOTED
BY CITY ENGINEER OF WICHITA**

Sanitary Sewers _____
Storm Sewers VRH 4/22/97
Driveway Approaches _____
Water Mains _____
Paving _____

NOTE TO CONTRACTORS

Inspection and testing for this project is to be provided by a Licensed Consulting Engineering Firm under contract with the Owner/Developer. Said inspection to be in accordance with the City of Wichita standard construction engineering practices and certified by a Licensed Professional Engineer. No work shall be performed in dedicated easements or public right-of-way by the Contractor without such inspection nor shall any work be commenced without written authorization by the City Engineer. All Construction and Materials shall comply with the City of Wichita Specifications and Standards (as fit and available in the City Engineer's Office).

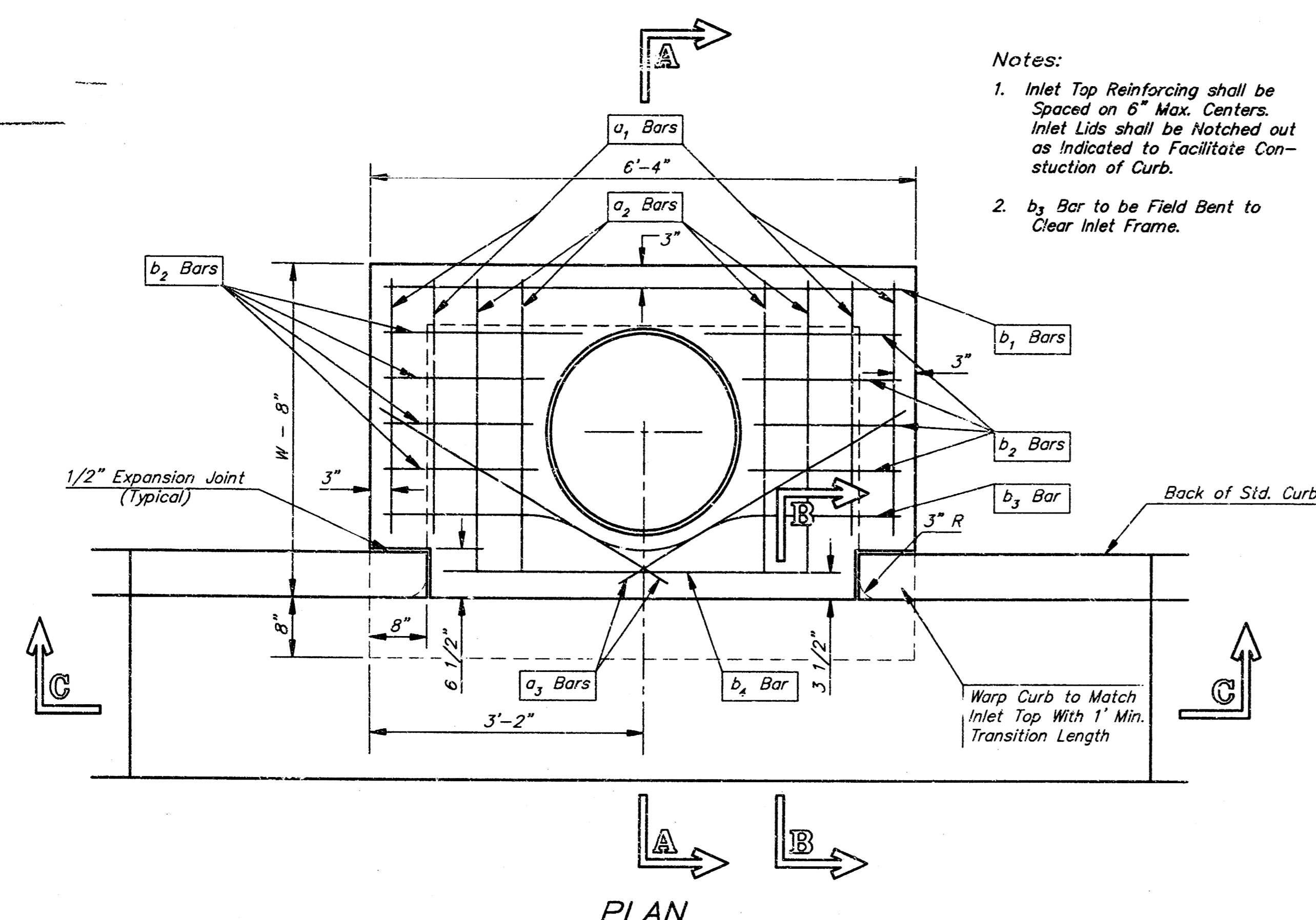
PROJECT INSPECTOR - L. POWERS - BAUGHMAN CO.

"AS-BUILT" 4/10/97 DLY - BAUGHMAN CO.

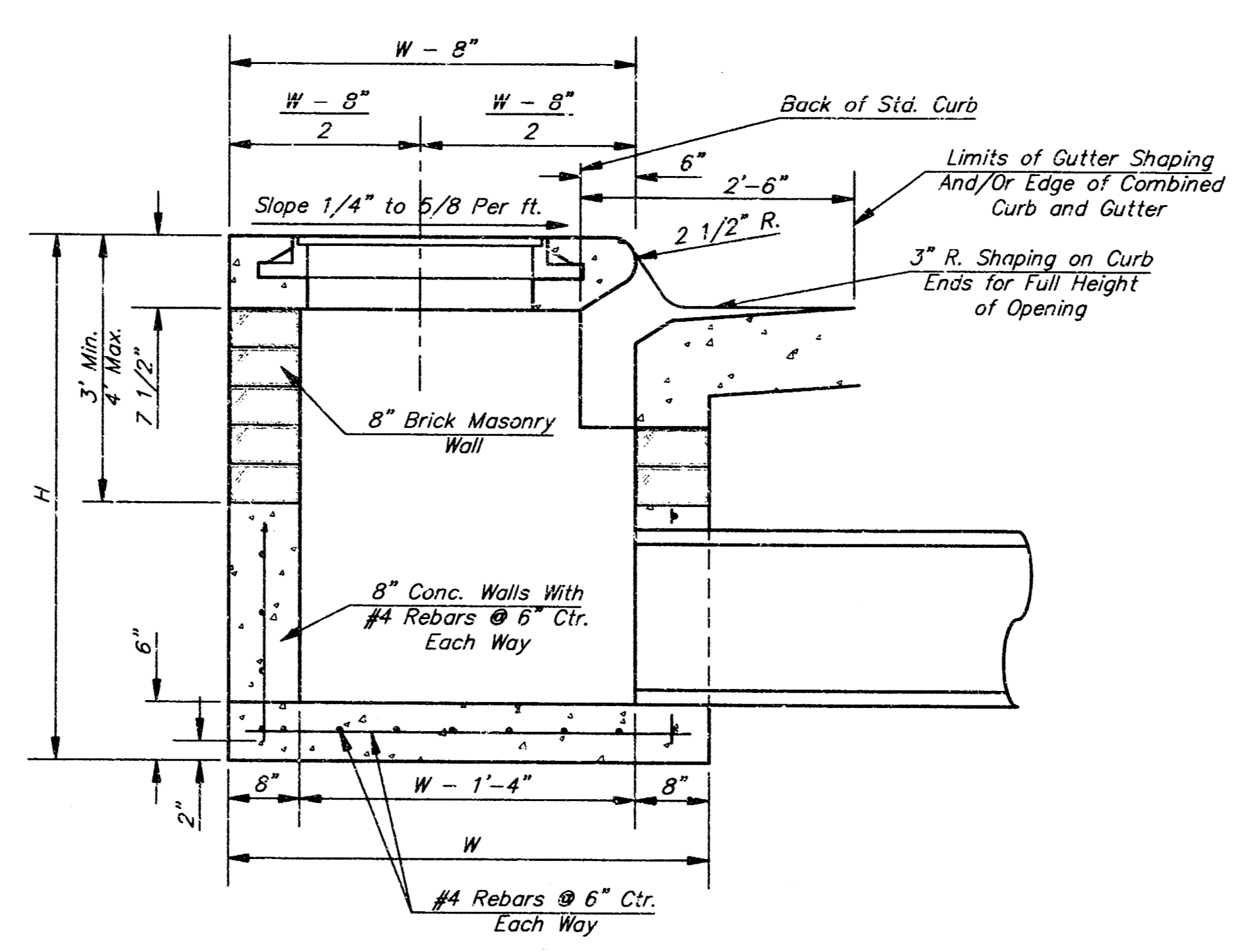
**PRIVATE STORM WATER SEWER TO SERVE
Lot 1, Timber Ridge 4th Addition**

BAUGHMAN COMPANY P.A.
ENGINEERING, SURVEYING, & PLANNING
316-262-7271 • 319 ELLIS • WICHITA, KANSAS 67211

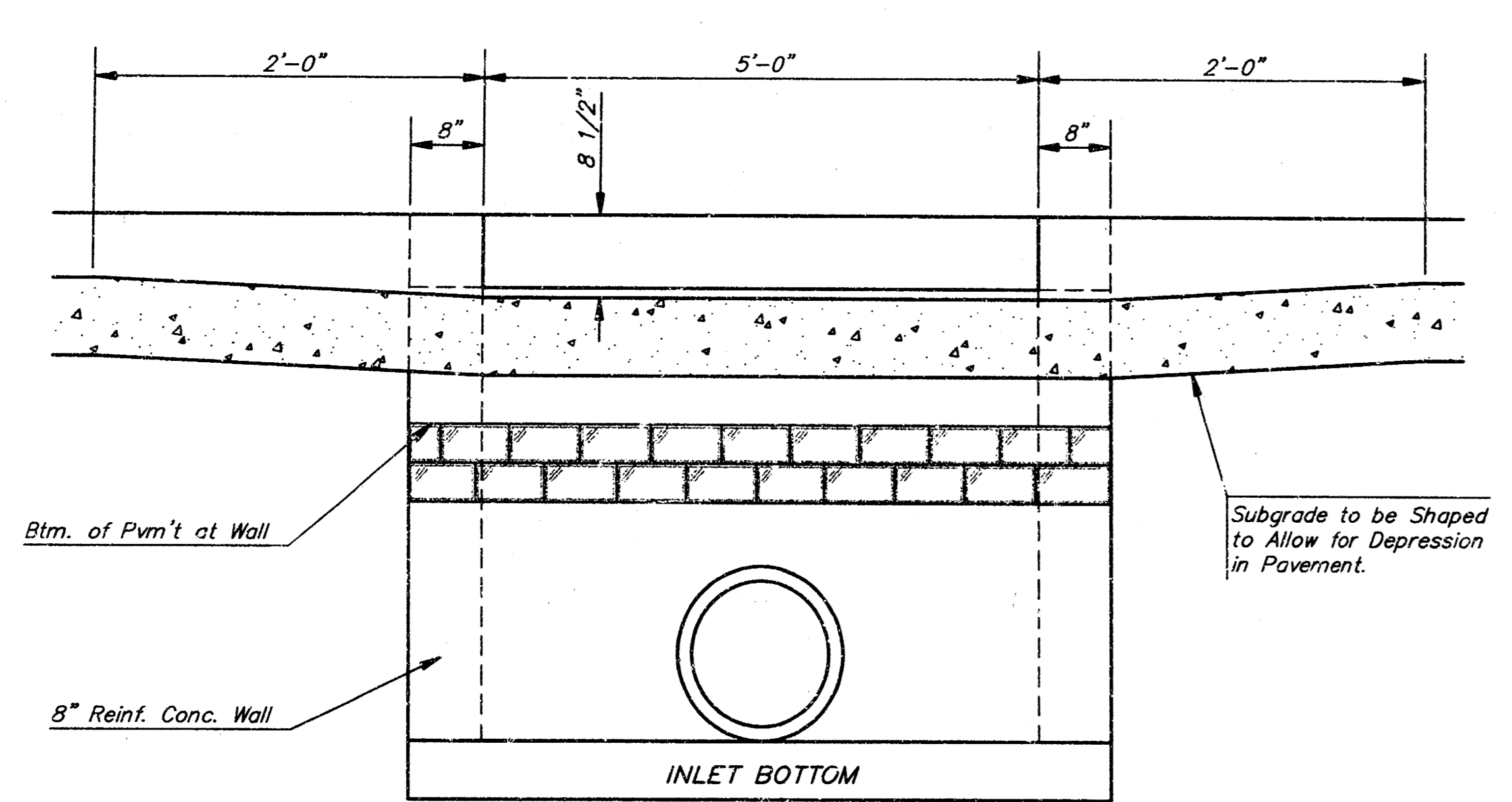
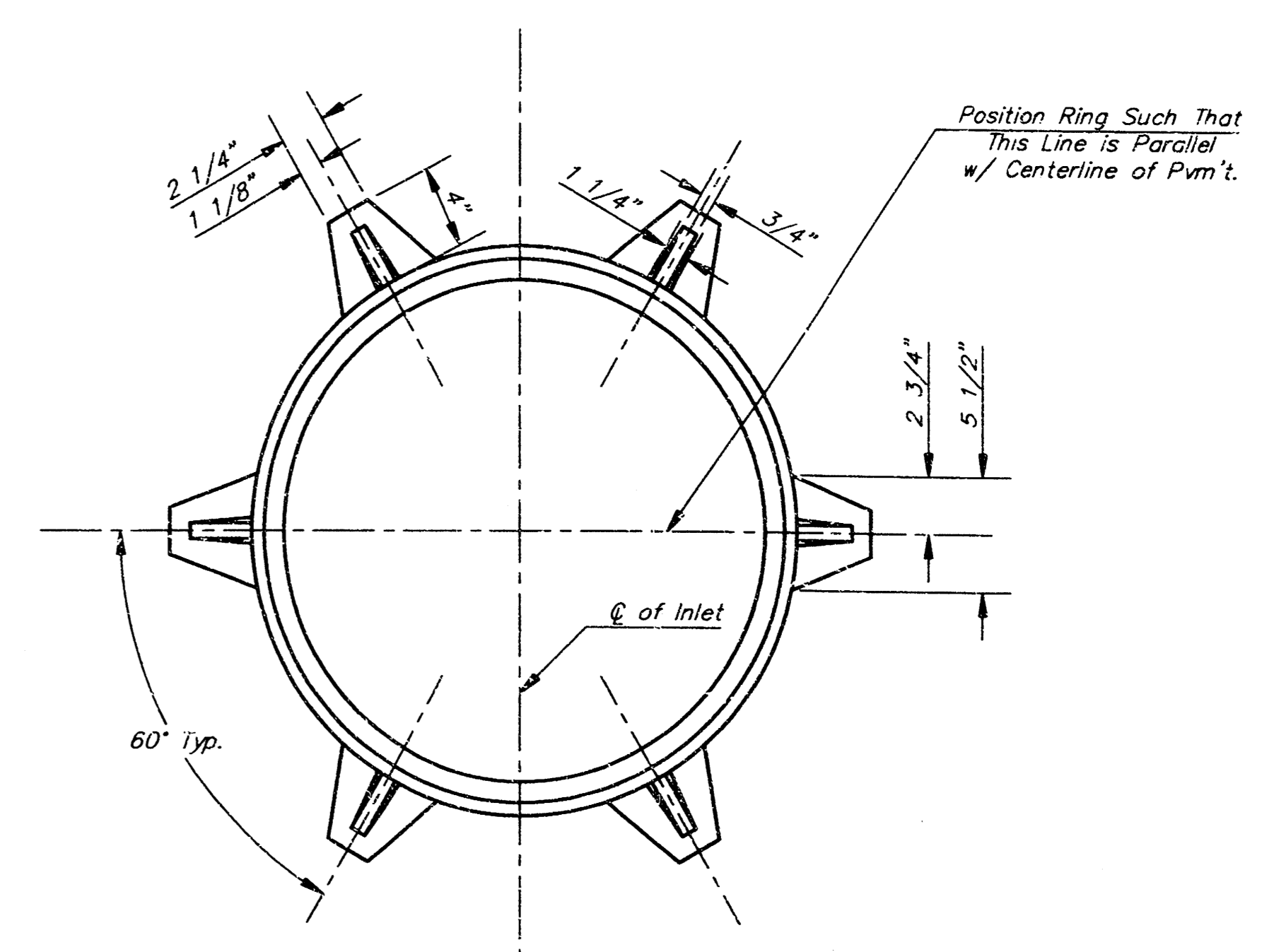
PROJECT NUMBER **707 PPS(607861)** SHEET **1**
DESIGN **RLG** DRAWN **RLG** APPROVED **RLG** DATE **3-31-97** SCALE **NOTED** OF **3**



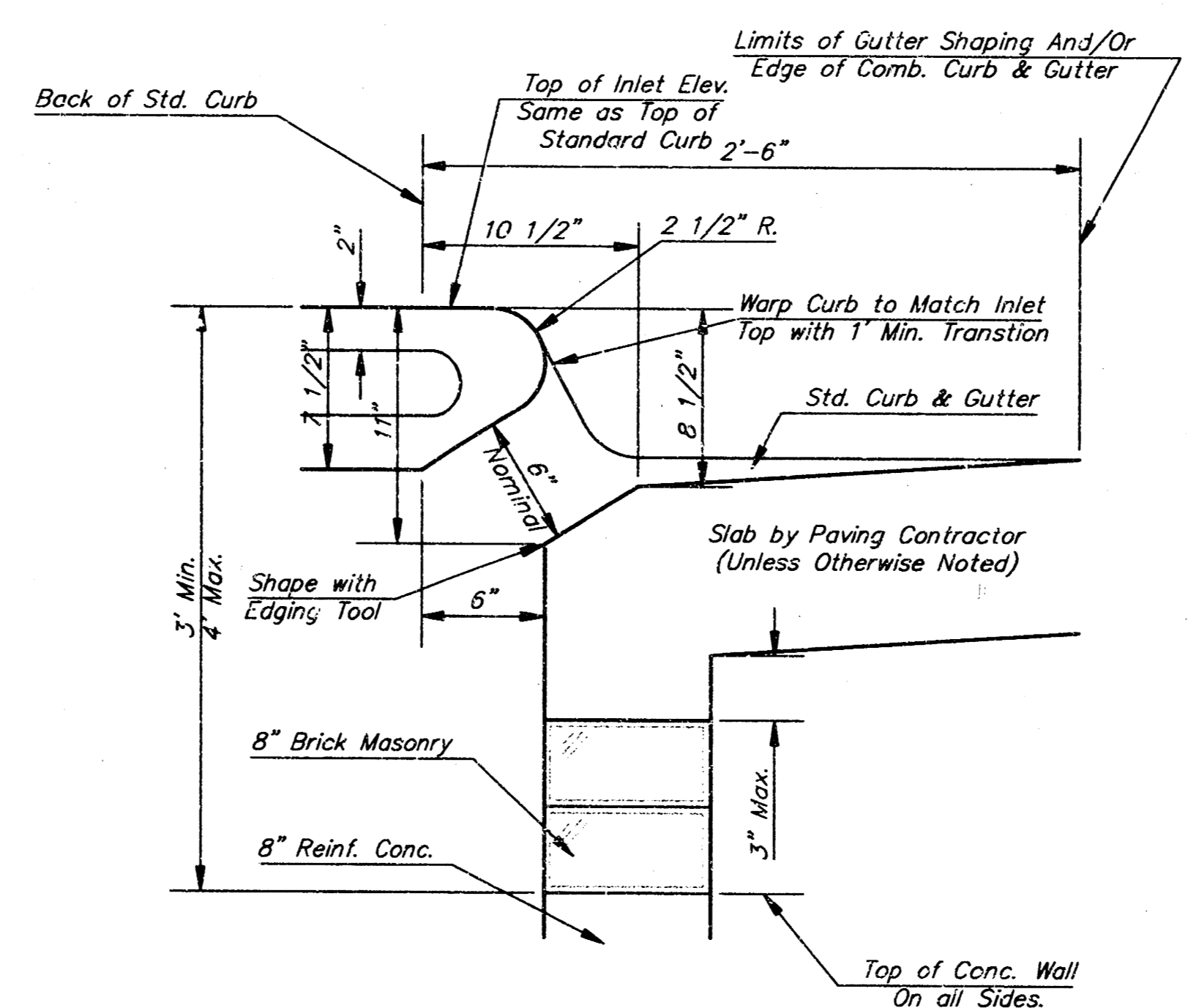
Notes:
 1. Inlet Top Reinforcing shall be Spaced on 6" Max. Centers. Inlet Lids shall be Notched out as indicated to Facilitate Construction of Curb.
 2. b_3 Bar to be Field Bent to Clear Inlet Frame.



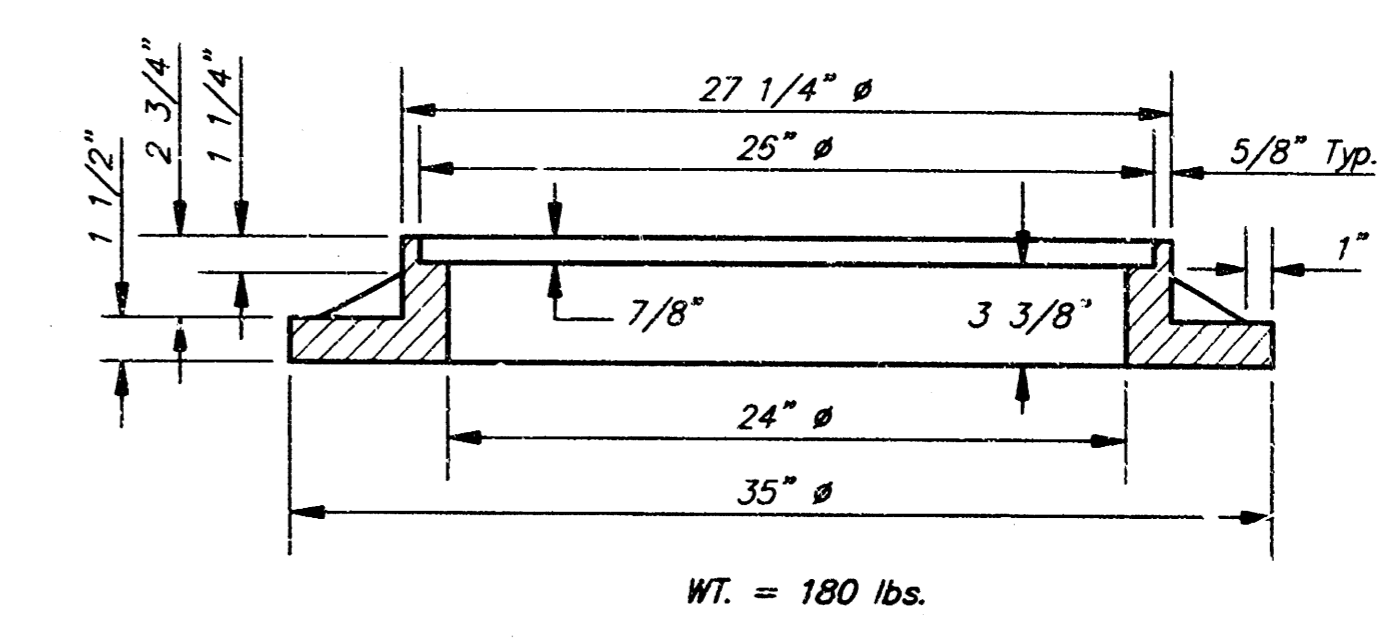
SECTION A-A



SECTION C-C

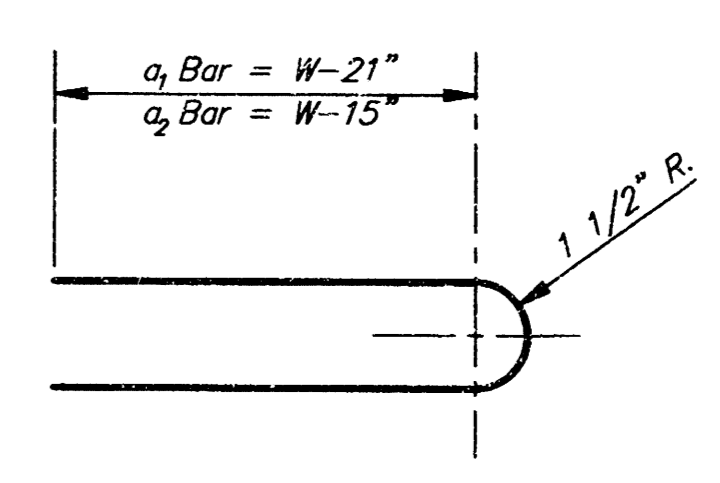


SECTION B-B



MANHOLE RING AND COVER

See City of Wichita Standard Manhole Ring and Cover Detail Sheet for Cover Details to Be Used With Inlet Frame.



BENDING DIAGRAM

STEEL SCHEDULE

BAR	b_1									Wt. Lbs.		
	a_1	a_2	a_3	W-4'-4"	W-5'-4"	W-6'-4"	W-7'-4"	W-8'-4"	b_2		b_3	b_4
NUMBER	4	4	2	1	3	5	7	9	6	1	1	
SIZE	#4	#4	#4	#4	#4	#4	#4	#4	#4	#4	#6	
LENGTH	W=4'-4"	5'-7"	6'-7"	4'-0"	6'-1"	-	-	-	1'-9"	6'-2"	4'-8"	60±
	W=5'-4"	7'-7"	8'-7"	5'-0"	6'-1"	-	-	-	1'-9"	6'-2"	4'-8"	81±
	W=6'-4"	9'-7"	10'-7"	6'-0"	6'-1"	-	-	-	1'-9"	6'-2"	4'-8"	101±
	W=7'-4"	11'-7"	12'-7"	7'-0"	6'-1"	-	-	-	1'-9"	6'-2"	4'-8"	121±
	W=8'-4"	13'-7"	14'-7"	8'-0"	6'-1"	-	-	-	1'-9"	6'-2"	4'-8"	141±

Note: a_3 Bars to be Placed Approx. 2" Below Top of Inlet Cover.

W	PRE-CAST TOP SIZE	PIPE SIZE	CU. YD. CONC.
4'-4"	3'-8" 6'-4" 7 1/2"	21" & SMALLER	0.38±
5'-4"	4'-8" 6'-4" 7 1/2"	24" & 30"	0.51±
6'-4"	5'-8" 6'-4" 7 1/2"	36" & 42"	0.64±
7'-4"	6'-8" 6'-4" 7 1/2"	48" & 54"	0.77±
8'-4"	7'-8" 6'-4" 7 1/2"	60" & 66"	0.90±

GENERAL NOTES

- Concrete tops to be installed on thin mortar cushion to insure full support along brick walls. Concrete tops may be cast in place or precast. Concrete used for inlet construction shall be concrete pavement mix.
- Contractor shall have the option of constructing 8" brick masonry walls between the concrete inlet base and top on this inlet when W=6'-4" and H=7'-0" or less.
- Inlet invert shall be shaped with 8 sack sand mix concrete to create flow channels and to increase hydraulic efficiency such that the inlet will be self cleaning between all inlet and/or outlet pipes.
- The ends of all pipes installed in inlets shall be cut off flush with the inside face of the inlet wall.

Revised - Dec. 21, 1984

CITY OF WICHITA, KANSAS
TYPE 1 CURB INLET
 INLET OPENING = 8"X5'-0"

BAUGHMAN COMPANY P. A.
 ENGINEERING, SURVEYING, & PLANNING

PROJECT NUMBER: 707 PPS (607861)
 SHEET: 2 OF 3

DESIGN: C.D.W. DRAWN: STAFF APPROVED: DATE: SCALE:

