

STORMWATER SEWER IMPROVEMENTS TO SERVE Comotara Power Center 3rd Addition

Project Number
710 PPS (607861)

CITY OF WICHITA, KANSAS
Michael E. Lindebak, P. E., City Engineer

GENERAL NOTES

- Contractor will be required to provide notice to utility companies a minimum of twenty-four (24) hours prior to any excavation, as follows:

Kansas One-Call	687-2470
-----------------	----------

The Contractor must notify the following in case of an emergency:

Cablevision	262-4270
or	263-2061
K.P.L. Gas Service Company	383-8650
Kansas Gas & Electric Company	383-8600
Arkla Gas Company	942-8350
Southwestern Bell Telephone Company	1-571-2611
City of Wichita Water Department	268-4908
City of Wichita Sewer Department	268-4071
- Exist. utilities and their locations, as shown on the plans, represent the best information obtainable for design. Location information has been obtained from the various utility companies and is either from company record drawings or company-provided field locations. The Contractor will be required to work around existing utilities which do not conflict with proposed construction.
- The Contractor to verify utility locations prior to construction of this project.
- Utility service and installation shall be coordinated with the respective utility owners. Contacts are:

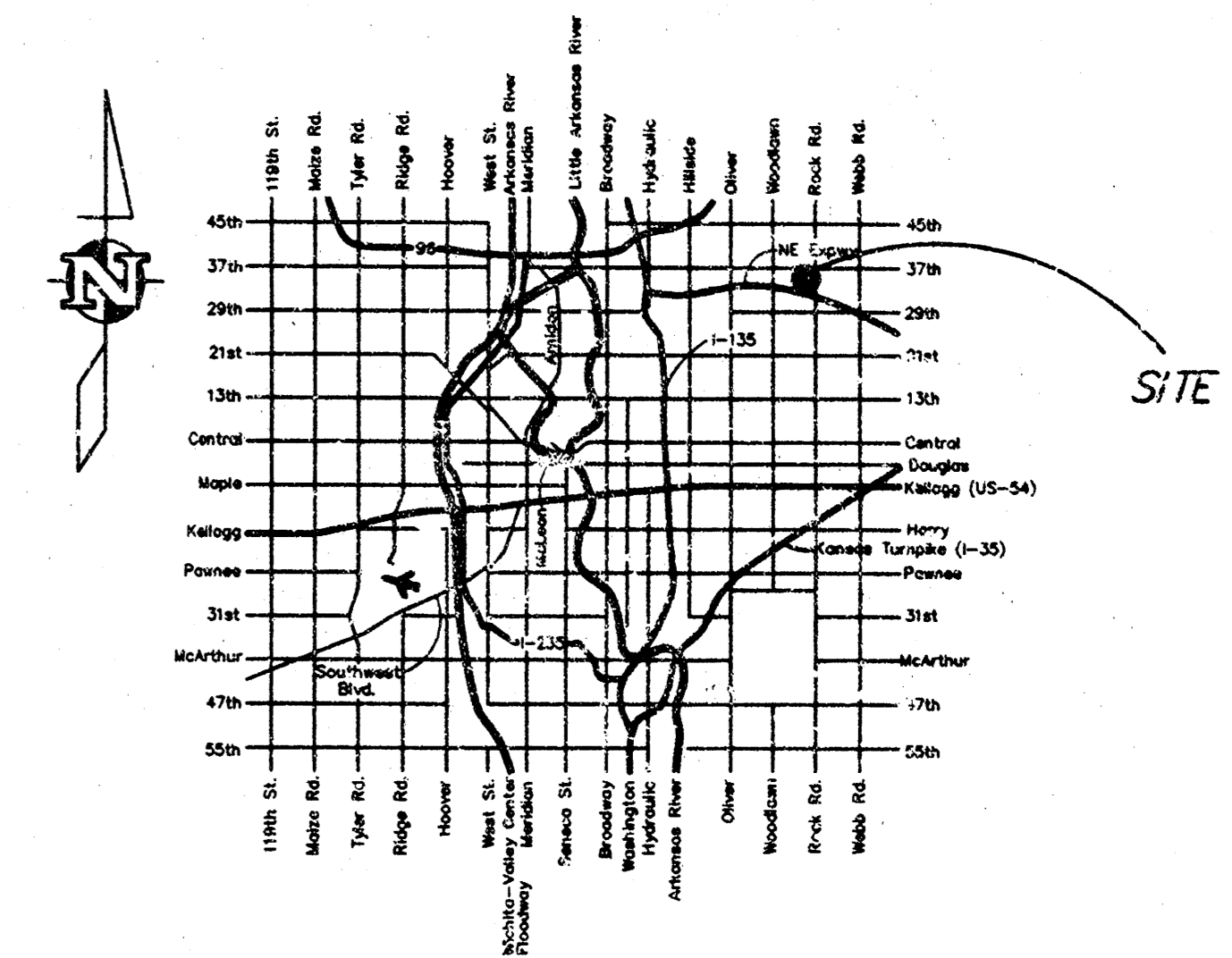
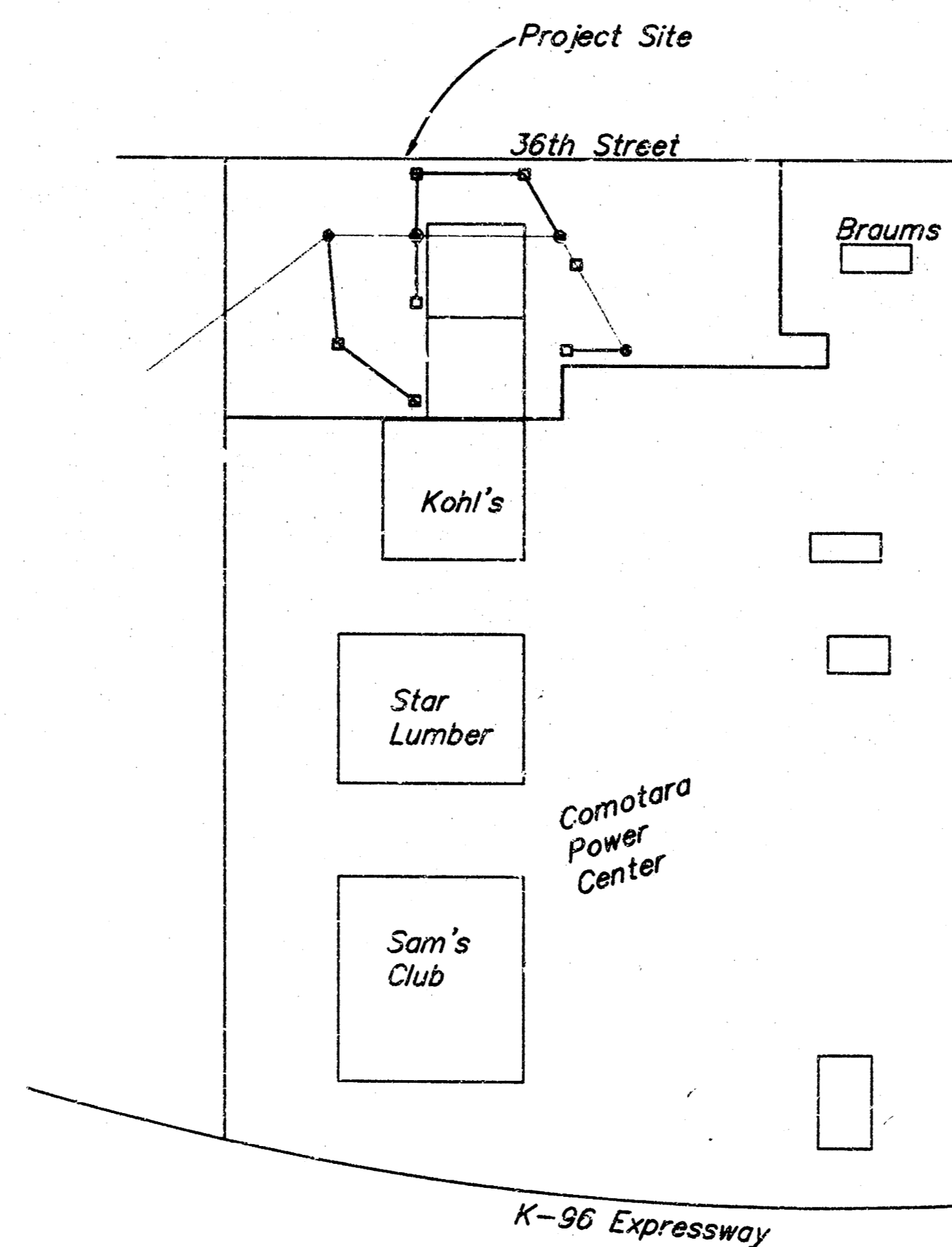
KG&E Gas	Steve Orth	261-6867
K.G. & E.	Miles Copps	261-6434
Wichita Water	Chuck S	268-4555
	Joe Boliner	268-4908
Southwestern Bell	Jim Tobin	268-2753
- All areas disturbed by construction shall be seeded with rye Rebel II rescue grass at a rate of 350 lbs./acre immediately following construction in that area.
- Traffic affected by the construction of this project shall be handled in accordance with the latest edition of the Manual on Uniform Traffic Control Devices.

BENCHMARK:

"□" Top of Curb @ W end of NW return
Inwood and 36th St. N.
Elev. = 1,370.93 MSL

INDEX

- Cover
- Plan and Profile



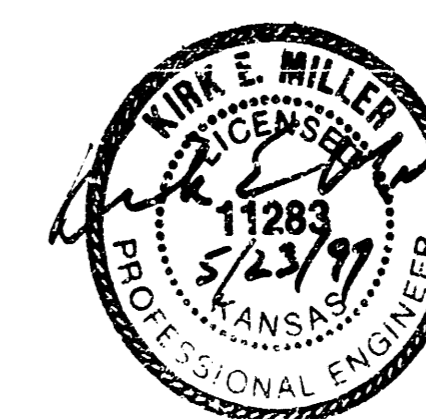
LOCATION MAP

APPROVED AS NOTED BY CITY ENGINEER OF WICHITA

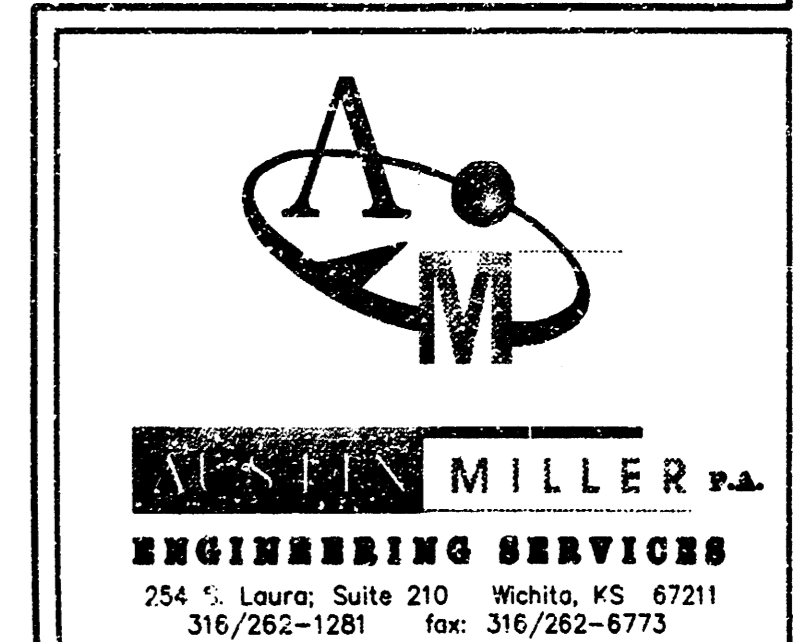
STORM SEWERS VRH 5/23/97

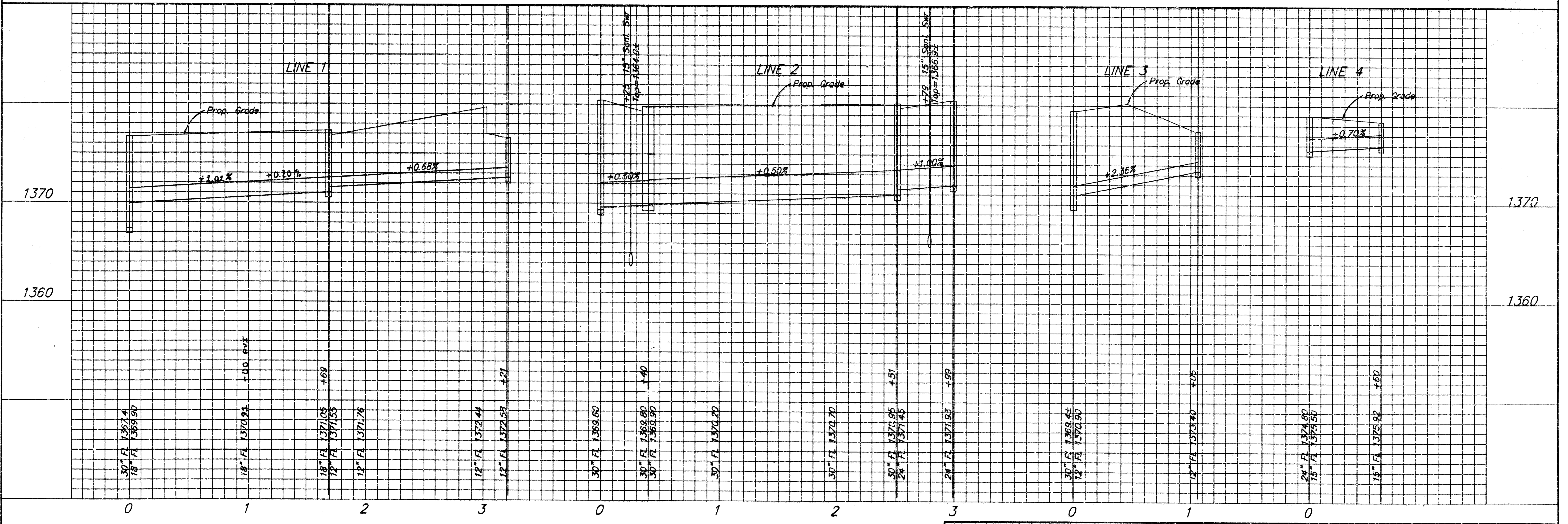
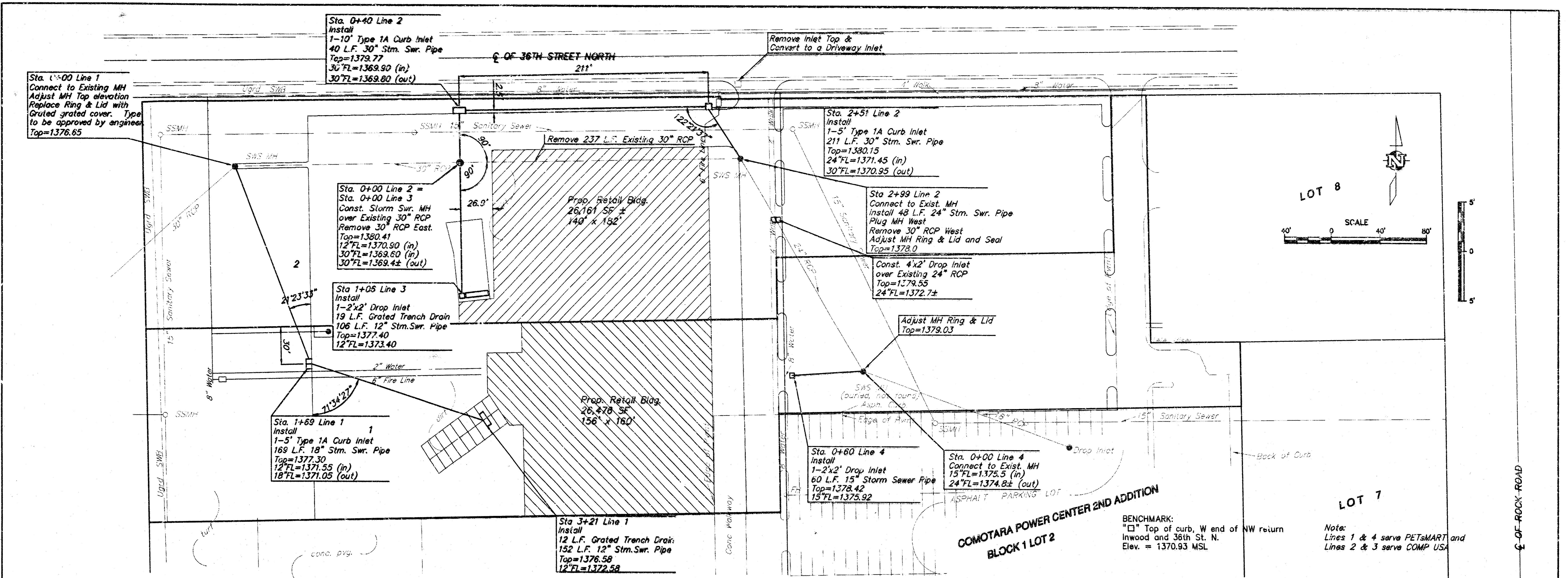
Inspection and testing for this project are to be provided by a Licensed Consulting Engineering Firm under contract with the Owner/Developer. Said inspection is to be in accordance with the City of Wichita standard construction engineering practices and certified by a Licensed Prof. Engineer. No work shall be performed in dedicated easements or public right-of-way by the Contractor without such inspection nor shall work be commenced without written authorization by the City Engineer. All construction and materials shall comply with the City of Wichita Specifications and Standards (on file and available in the City Engineer's Office).

AS-BUILT
Date: 3/10/98
Signed: Doug Miller



BOOKED
9-13-99
MCG
D-434





	PROJECT NUMBER 710 PPS (807861)				ASD NO. 98015	Comotara Power Center Third Addition		SHEET 2
	DESIGN km	DRAWN km	FILE SWS	DATE 23APR07	SCALE 1"=40'	STORM SEWER Lots 1 & 2		
316/262-1281								18-10-