

STORM WATER SEWER IMPROVEMENTS
TO SERVE
**CHADSWORTH COMMERCIAL
2ND ADDITION**

Private Project Number
723 PPS (607861)

CITY OF WICHITA, KANSAS
Michael E. Lindebak, P.E. City Engineer

BENCHMARK:

City of Wichita Disk Located
64' East and 99' South of the
Intersection of 21st Street North
and Maize Road.
Elevation = 164.30 (City Datum)

GENERAL NOTES:

1. Contractor will be required to provide notice to utility companies a minimum of twenty-four (24) hours prior to any excavation, as follows:

- | | |
|---|------------|
| Kansas One-Call | 687-2470 |
| The Contractor must notify the following in case of an emergency: | |
| Cablevision | 262-4270 |
| or | 263-2061 |
| K.P.L. Gas Service Company | 263-7511 |
| Kansas Gas & Electric Company | 264-1141 |
| Arkla Gas Company | 942-8350 |
| or | 263-8161 |
| Southwestern Bell Telephone Company | 1-571-2611 |
| City of Wichita Water Department | 268-4908 |
| City of Wichita Sewer Maintenance | 268-4071 |

2. Underground utility service lines and overhead utility pole lines are to be adjusted as necessary by others prior to construction unless the plans specifically call for their adjustment by the Contractor or unless the plans specifically identify a utility to be adjusted by its owner during construction. Existing utilities and their location, as shown on the plans, represent the best information obtainable for design. The Contractor will be required to work around existing utilities within the right-of-way which do not conflict with proposed construction.

3. The Contractor shall be responsible for preserving property irons. The Contractor will be required to re-establish any property irons which are damaged or destroyed by his construction operations. Such irons shall be re-established by a licensed land surveyor in accordance with state laws.

4. All areas disturbed by construction operations shall be seeded with rye grass at a rate of 300 lbs./acre immediately following construction in that area. Ground shall be prepared per City of Wichita specifications prior to seeding.

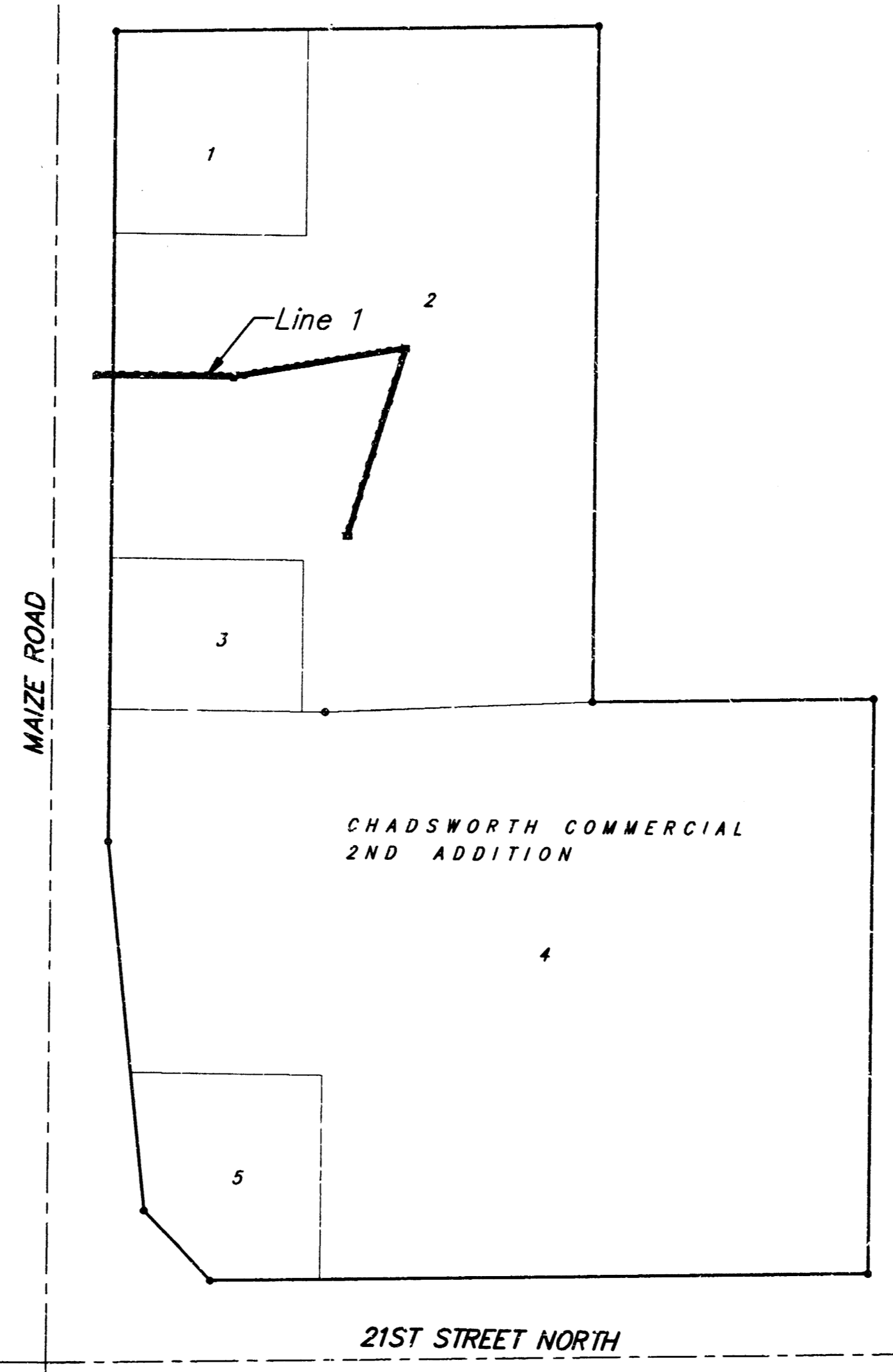
5. Trees and shrubs in public right-of-way which are in direct conflict with proposed new construction shall be removed by the Contractor with the Engineer's approval. Trees and shrubs which are not in direct conflict with proposed new construction shall be saved and protected from damage.

6. The Contractor shall give all property owners and/or tenants of developoo property abutting the construction of this project a minimum of ten (10) days advance notice prior to start of construction.

7. Rubble from the removal of miscellaneous structures and excess excavation which is to be wasted shall be disposed of on sites to be provided by the Contractor. These sites shall be approved by the engineer as to suitability, appearance and site location. Locations that, in the opinion of the Engineer, will leave an unsightly appearance will not be approved.

8. Prior to bid preparation, it will be the Contractor's responsibility to field check the project area to determine the extent of Site Clearing and Restoration to be performed.

9. Contractor shall not start work on the project until the project inspector is assigned to the project and is present on the site. Any work done without inspection will be required to be uncovered for inspection.



SCALE:
1" = 150'
• = Iron

INDEX:

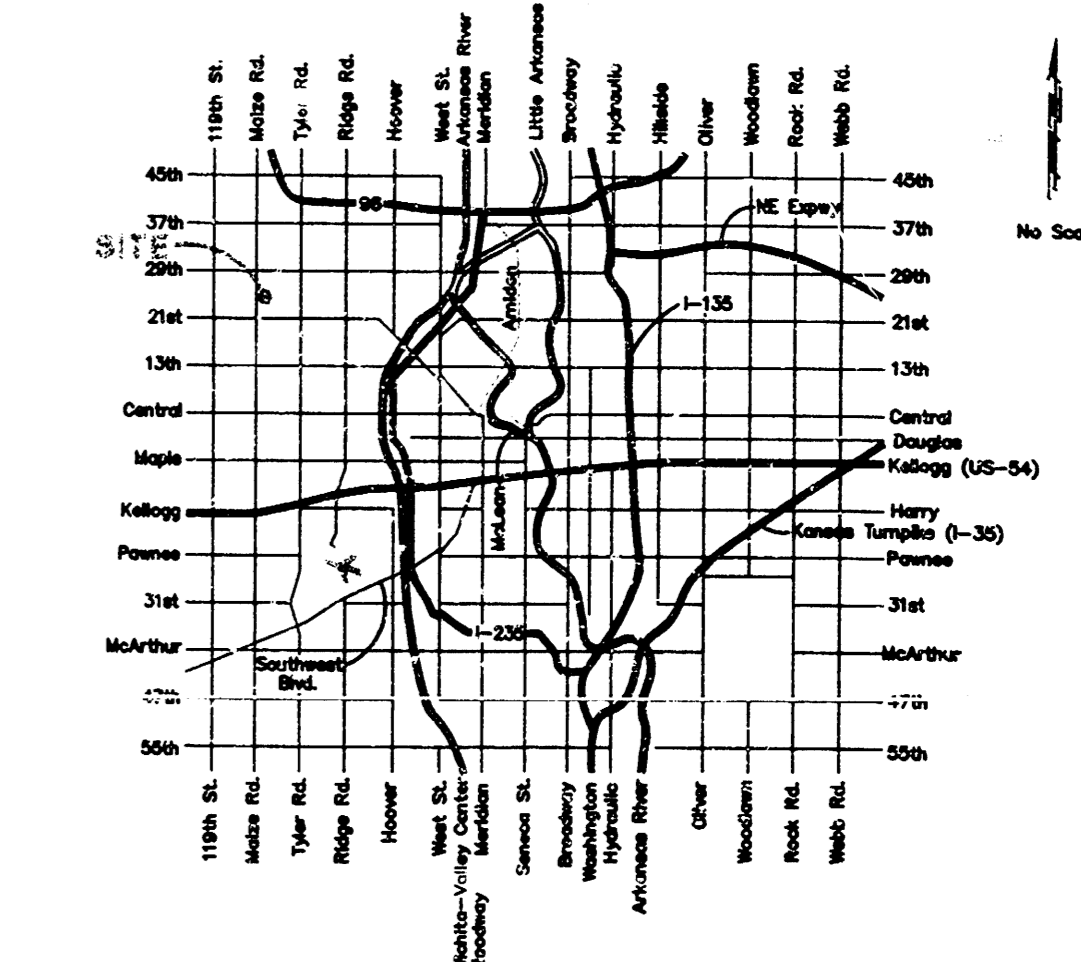
- 1 Title Sheet
- 2-3 Line 1
- 4 Standard Drop Inlet Detail (2' X 4')
- 5 Chadsworth Commercial Second Addition Plat

APPROVED AS NOTED
BY CITY ENGINEER OF WICHITA
Storm Sewers VRH 6/12/97

NOTE TO CONTRACTORS

Inspection and testing for this project is to be provided by a Licensed Consulting Engineering Firm under contract with the Owner/Developer. Said inspection to be in accordance with the City of Wichita standard construction engineering practices and certified by a Licensed Professional Engineer. No work shall be performed in dedicated easements or public right-of-way by the Contractor without such inspection nor shall any work be commenced without written authorization by the City Engineer. All Construction and Materials shall comply with the City of Wichita Specifications and Standards (on file and available in the City Engineer's Office).

BOOKED
2-27-98
D.382
MCG

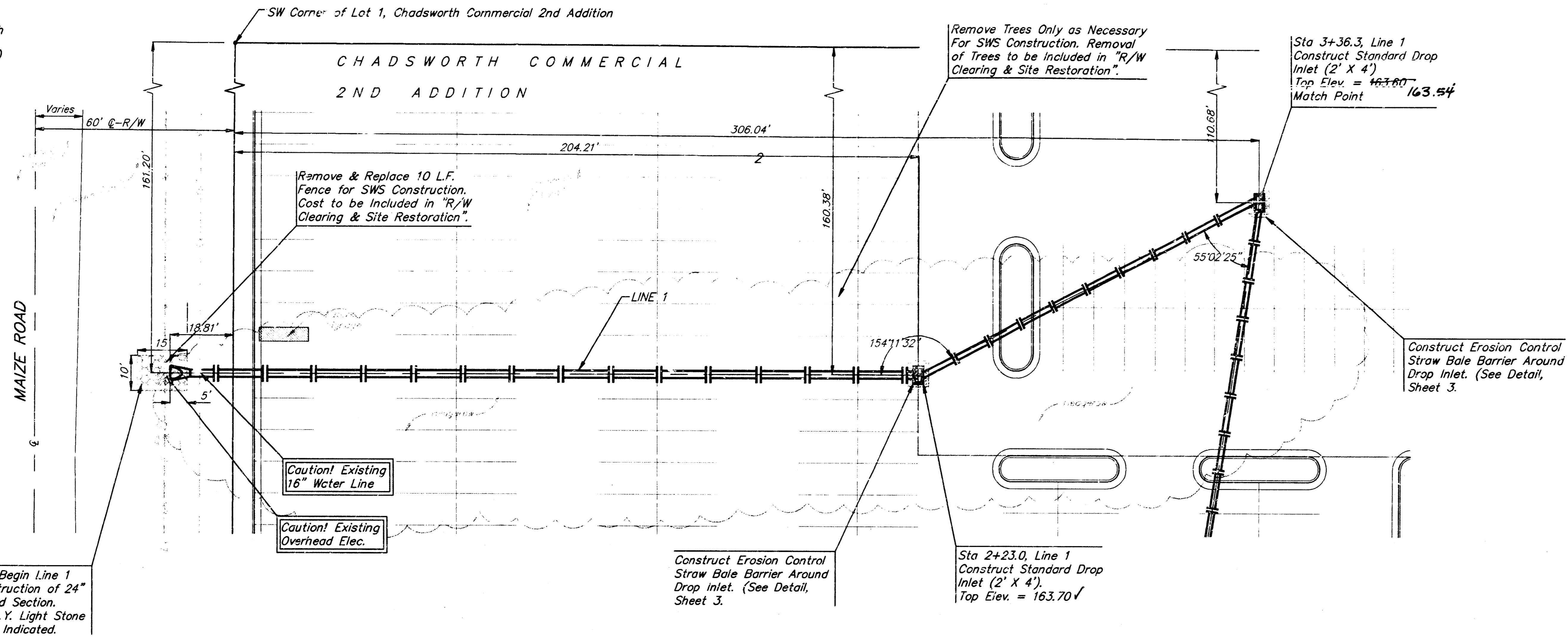


13744
26/11/97

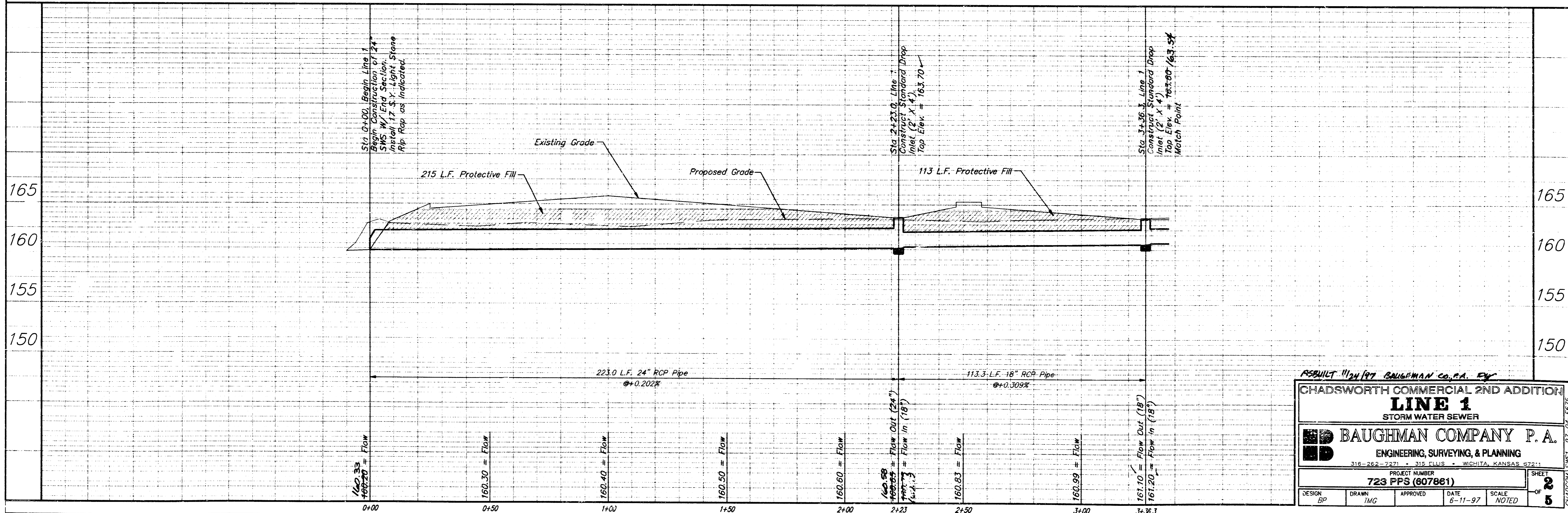
PROJECT INSPECTED BY BAUGHMAN CO., P.A.
ASBUILT 11/21/97 BAUGHMAN CO. 11/11/97

BAUGHMAN COMPANY P. A.
ENGINEERING, SURVEYING, & PLANNING
316-262-7271 • 310 ELLIS • WICHITA, KANSAS 67211

BENCHMARK:
City of Wichita Disk Located
64' East and 99' South of the
Intersection of 21st Street North
and Maize Road.
Elevation = 164.30 (City Datum)



Scale: 1" = 20' Horizontal
1" = 5' Vertical
• = Iron



RESULT 11/24/97 BAUGHMAN CO., P.A. INC.

CHADSWORTH COMMERCIAL 2ND ADDITION
LINE 1
STORM WATER SEWER

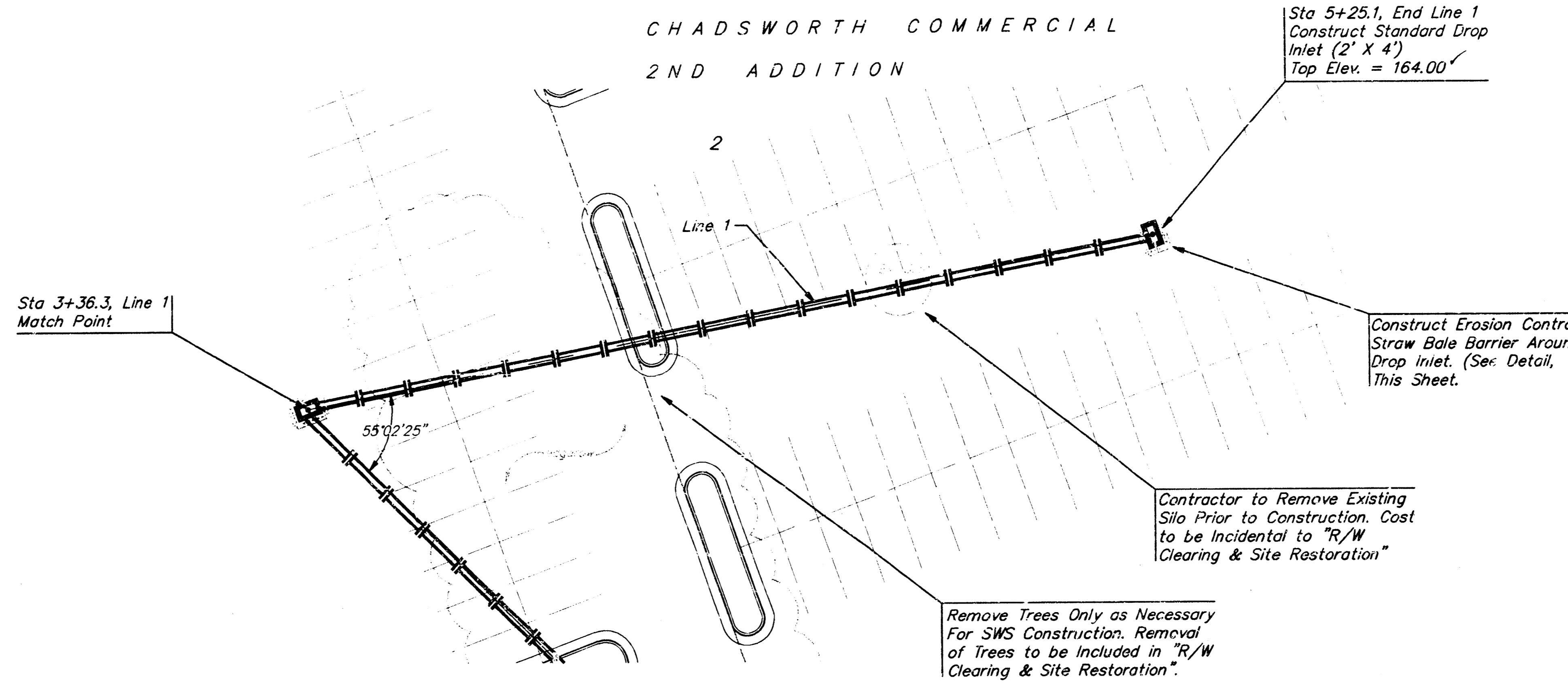
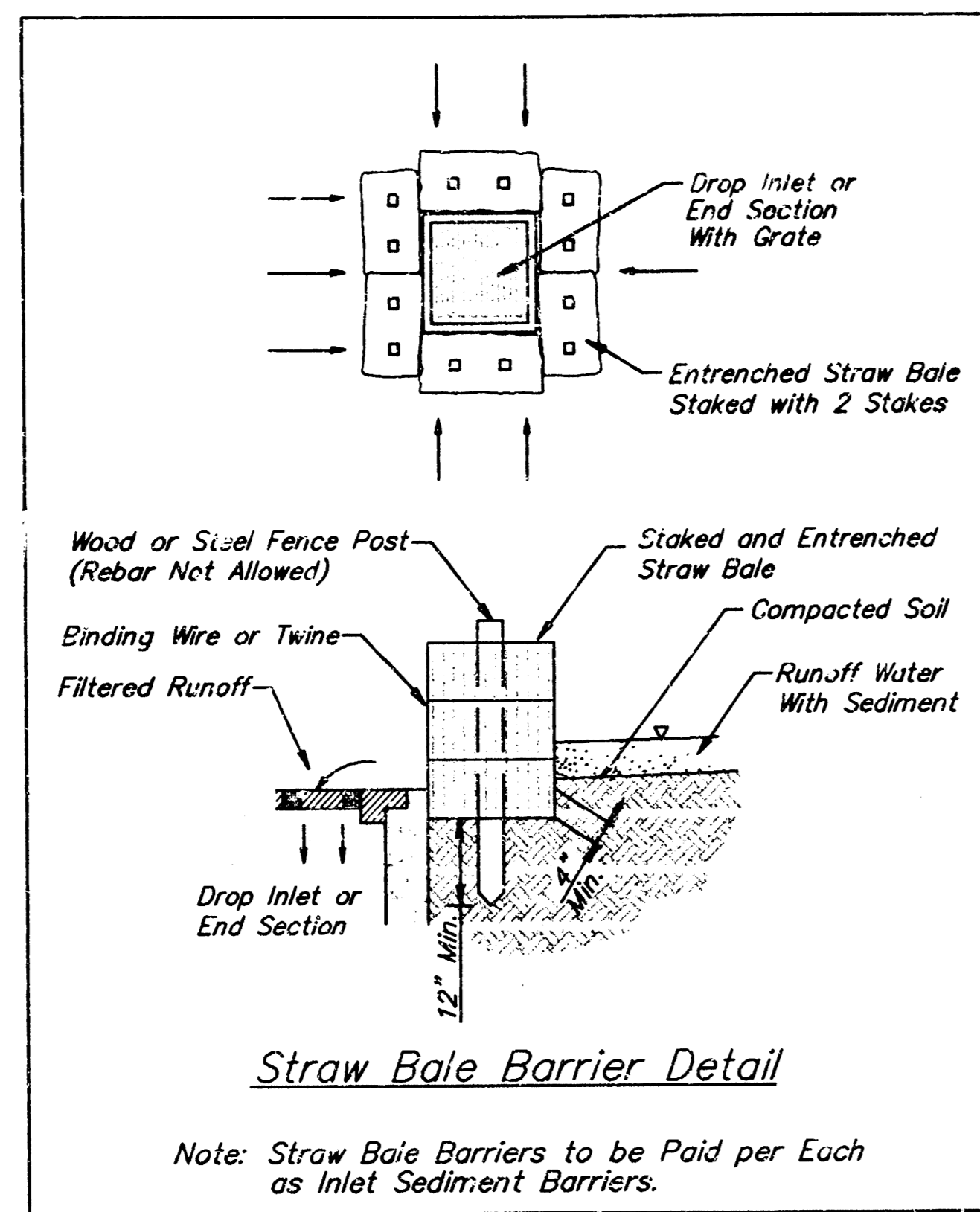
BAUGHMAN COMPANY P. A.
ENGINEERING, SURVEYING, & PLANNING
316-262-7271 • 312 ELLIS • WICHITA, KANSAS 67211

PROJECT NUMBER
723 PFS (607861)

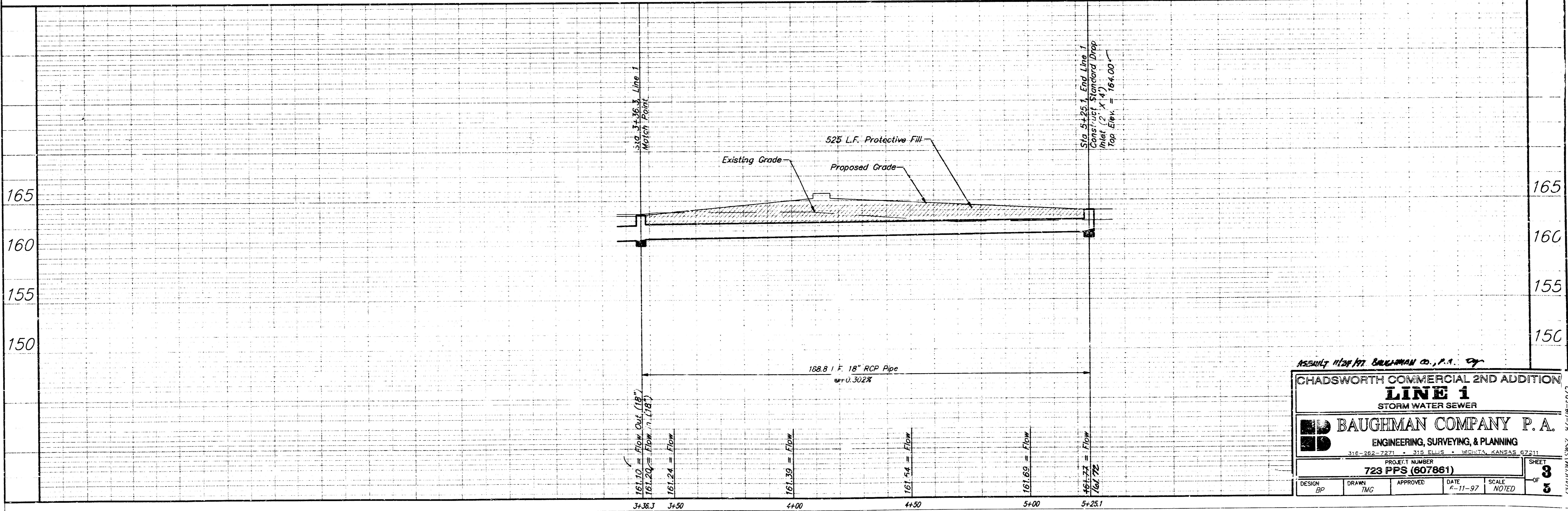
DESIGN: BP DRAWN: TNG APPROVED: DATE: 6-11-97 SCALE: NOTED

SHEET **2** OF **5**

BENCHMARK:
 City of Wichita Disk Located
 64' East and 99' South of the
 Intersection of 21st Street North
 and Maize Road.
 Elevation = 164.30 (City Datum)



Scale: 1" = 20' Horizontal
 1" = 5' Vertical
 • = iron



ASSULTY 11/24/97 BAUGHMAN CO., P.A. 07

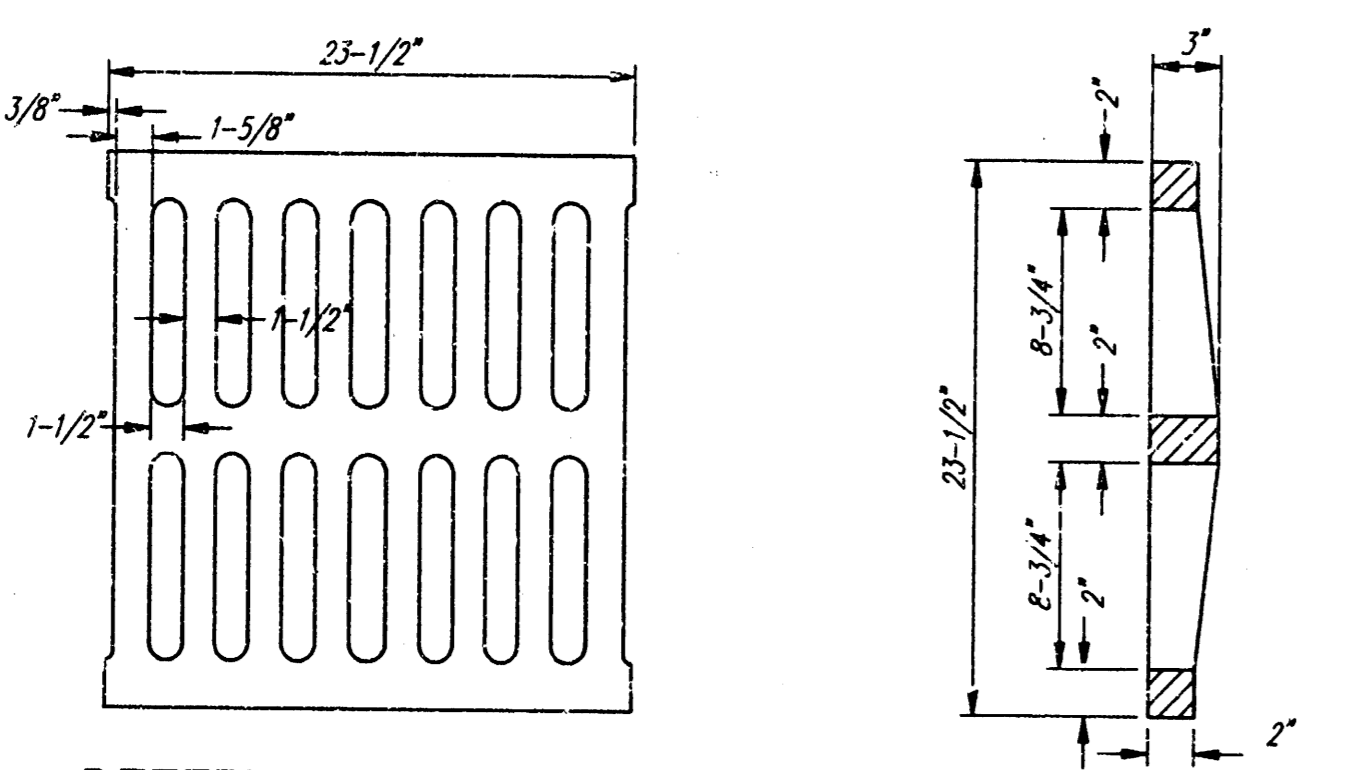
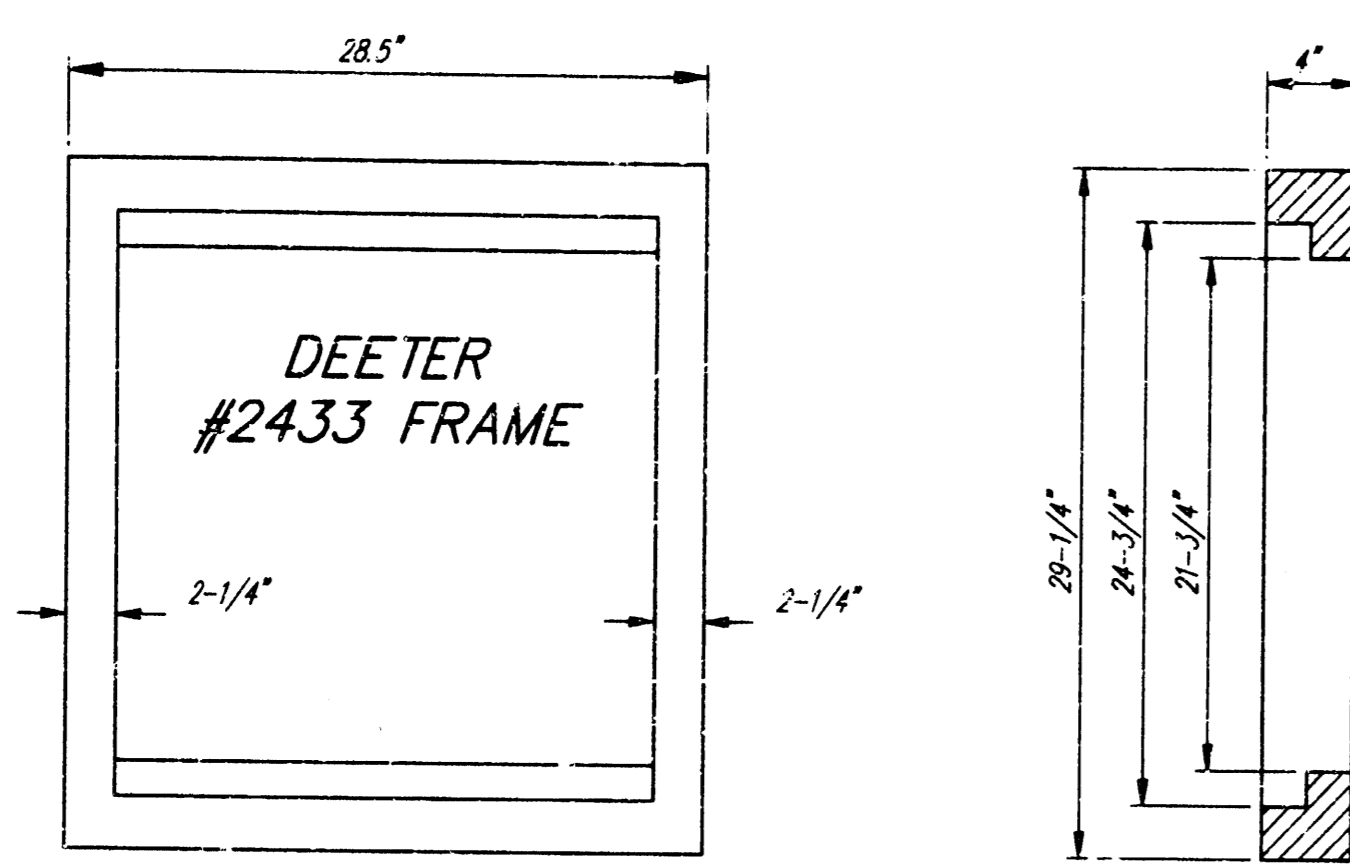
**CHADSWORTH COMMERCIAL 2ND ADDITION
 LINE 1
 STORM WATER SEWER**

BAUGHMAN COMPANY P.A.
 ENGINEERING, SURVEYING, & PLANNING
 316-262-7271 • 316-262-7272 • WICHITA, KANSAS 67211

PROJECT NUMBER
723 PPS (607861)

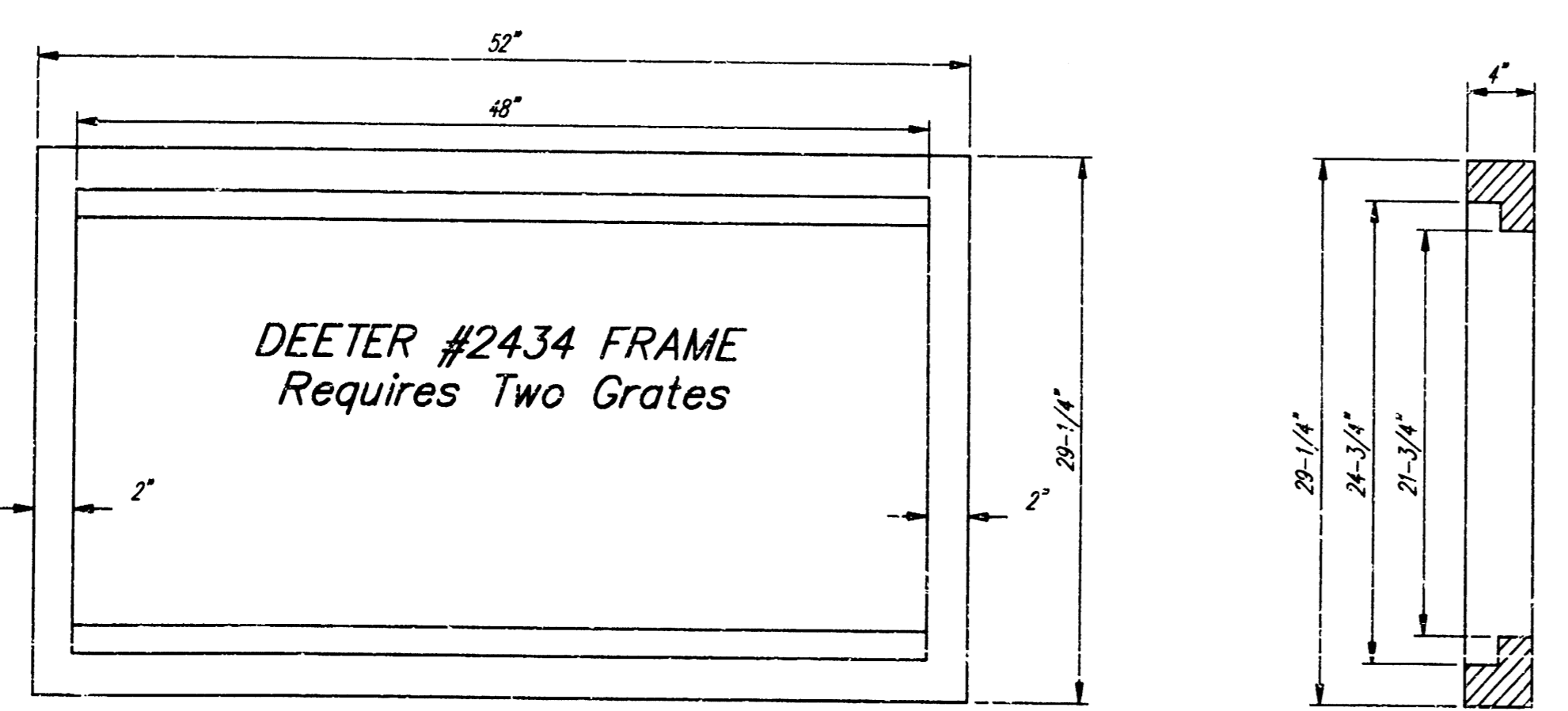
DESIGN BP	DRAWN TMG	APPROVED	DATE 6-11-97	SCALE NOTED	SHEET OF 3
--------------	--------------	----------	-----------------	----------------	-------------------------

1536152

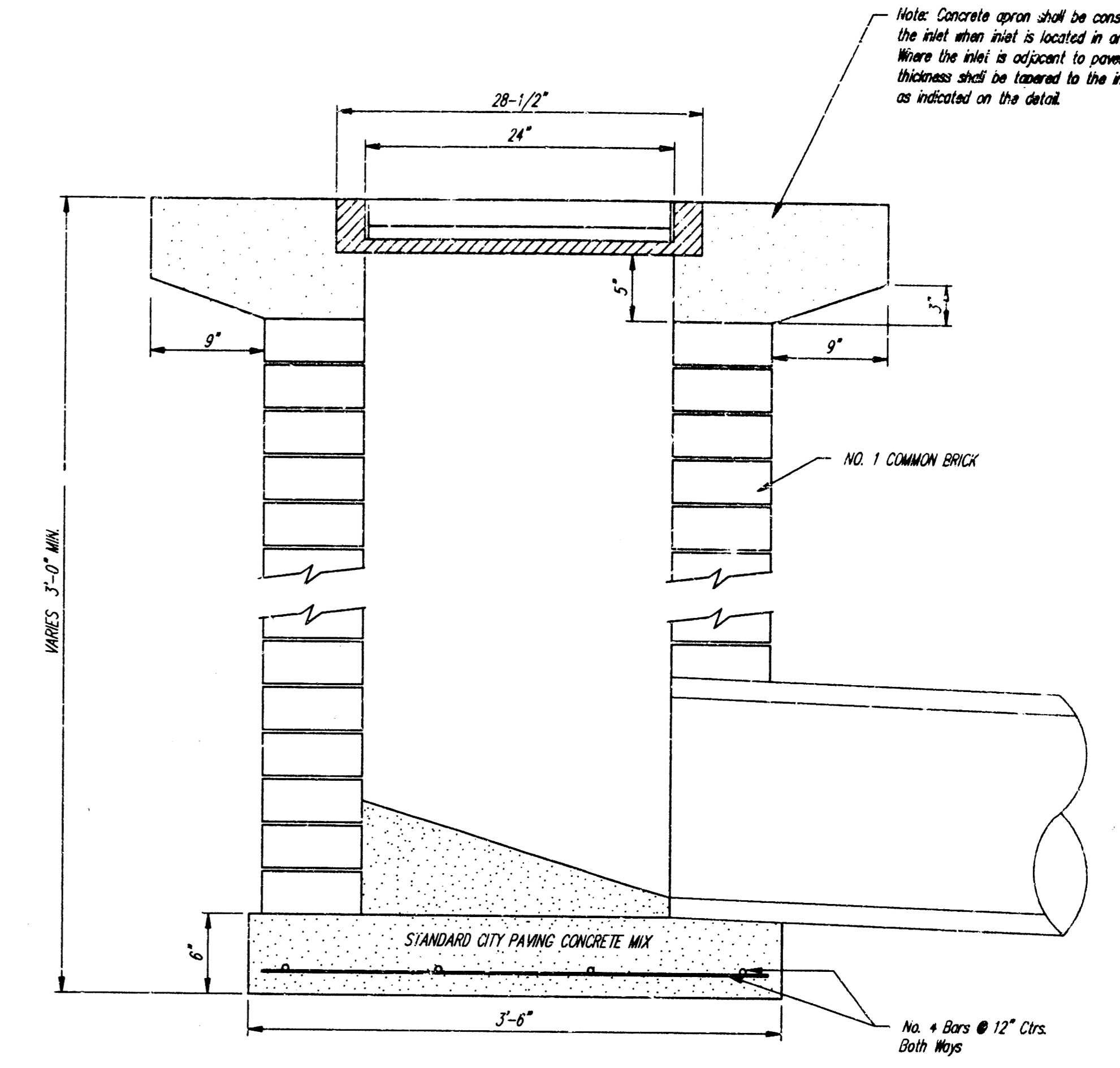
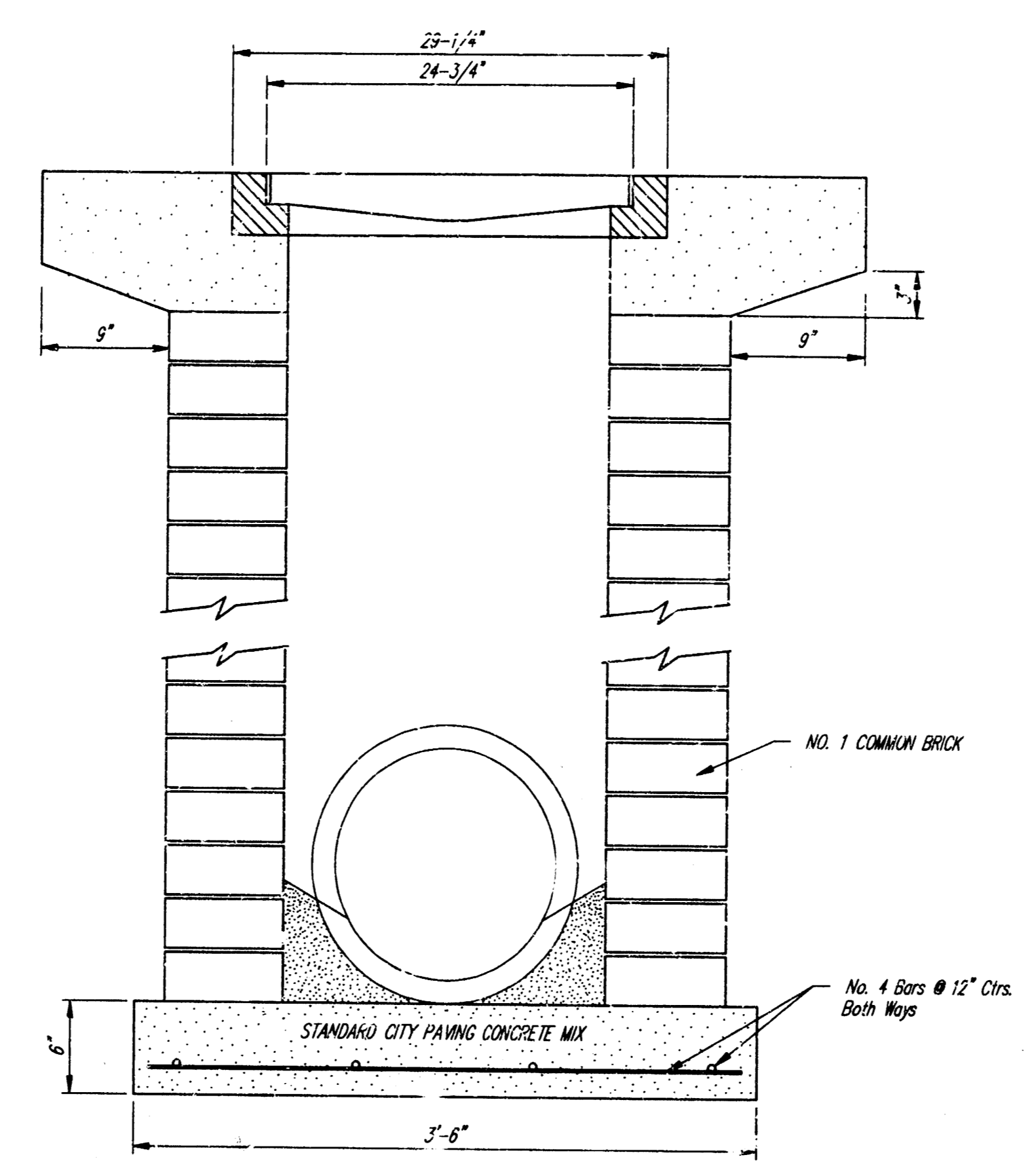


DEETER #2433 GRATE
24" x 24" Frame and Grate Detail

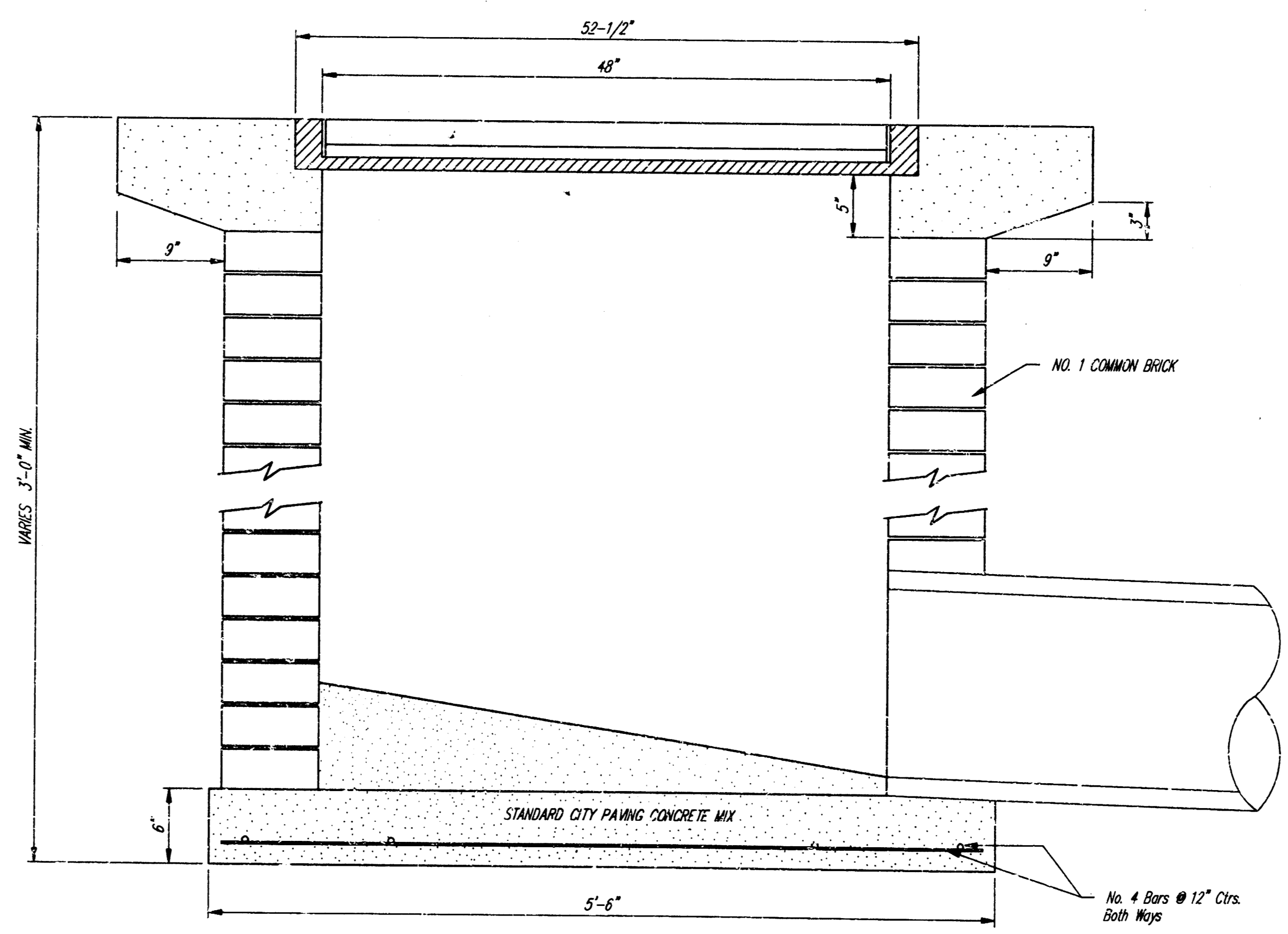
NOTE: Grates shall be imprinted on the top surface with "CITY OF WICHITA" using letters at least 1" in height. Other marking methods may be approved by the engineer.



Double 24" x 24" Frame Detail



Note: Concrete apron shall be constructed around the inlet when inlet is located in an ungraded area. Where the inlet is adjacent to pavement, the pavement thickness shall be lowered to the inlet is 9 inches as indicated on the detail.



City of Wichita Standard
Drop Inlet

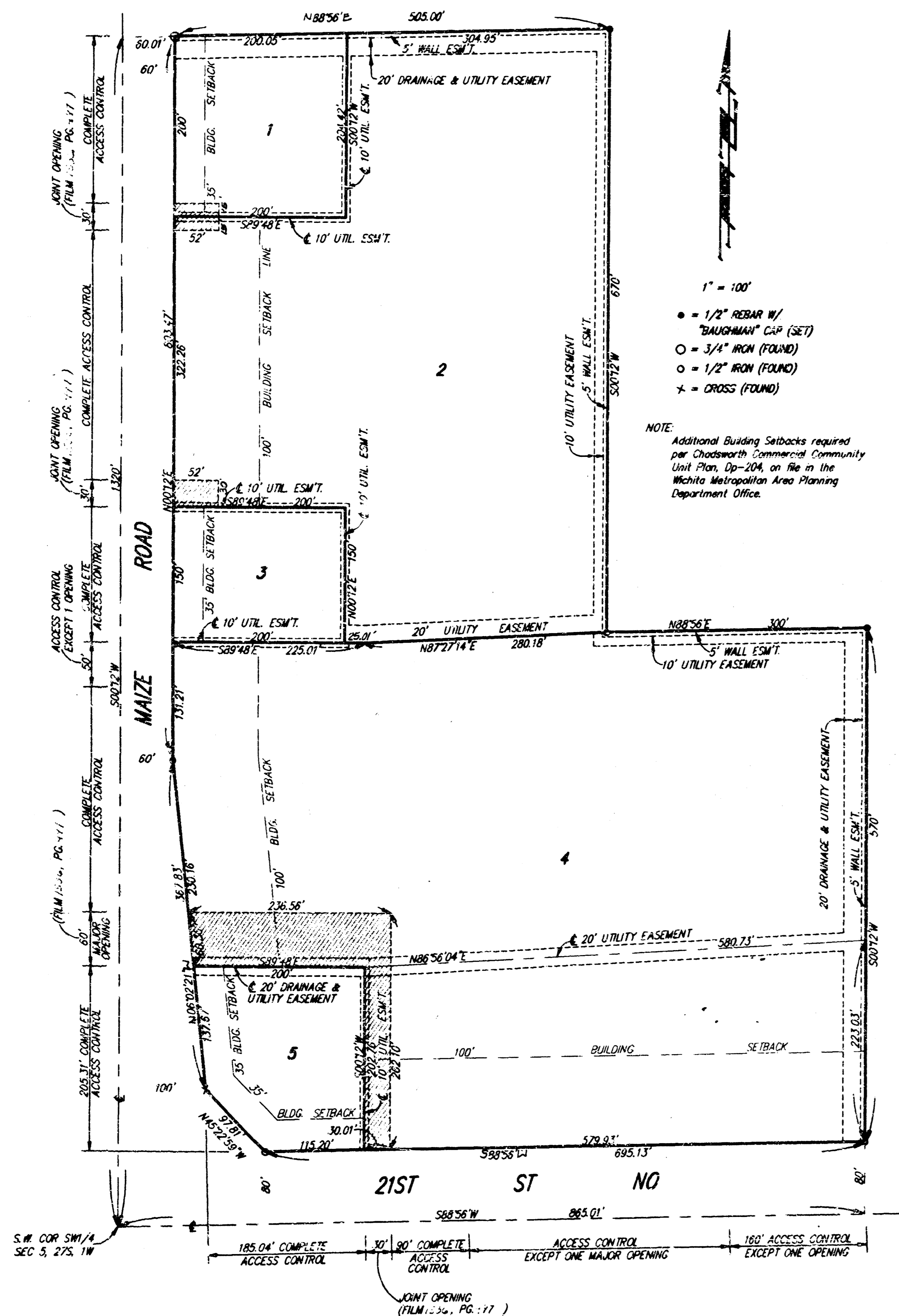
BAUGHMAN COMPANY P. A.
ENGINEERING, SURVEYING, & PLANNING
316 - 212 - 7271 • 316 ELLIS • WICHITA, KANSAS 67211

PROJECT NUMBER
723 PFS (607661)

DESIGN C.O.W.	DRAWN Staff	APPROVED	DATE	SCALE NONE	SHEET 4 OF 5
------------------	----------------	----------	------	---------------	-------------------------------------

CHADSWORTH COMMERCIAL 2ND ADDITION

WICHITA, SEDGWICK COUNTY, KANSAS



State of Kansas) *SS* We, Baughman Company, P.A., Surveyors in
Sedgwick County) do hereby certify that we have surveyed
and platted "CHADSWORTH COMMERCIAL 2ND ADDITION", Wichita, Sedgwick
County, Kansas, and that the accompanying plat is a true and correct
exhibit of the property surveyed, described as and being a replat of
Lots 1, 2, 3, 4, 5, 6, and 7, Chadsworth Commercial Addition, Wichita,
Sedgwick County, Kansas.

All being situated in the SW1/4 of Sec. 5, Twp. 27-S, R-1-W
of the 6th P.M., Sedgwick County, Kansas.

Existing public easements and dedications being vacated by
virtue of K.S.A. 12-512(b).

Baughman Company, P.A.

Gregory F. Severns 7-12-95
Surveyor
Gregory F. Severns

This plat of "CHADSWORTH COMMERCIAL 2ND
ADDITION", Wichita, Sedgwick County, Kansas has been submitted to
and approved by the Wichita-Sedgwick County Metropolitan Area
Planning Commission, Wichita, Kansas.
Dated this 29th day of JUNE, 1995.

Wichita-Sedgwick County Metropolitan Area Planning Commission.

John W. McKay, Jr. Chairman
John W. McKay, Jr.

Marvin S. Krout Secretary
Marvin S. Krout



This plat approved and all dedications shown
hereon accepted by the City Council of the City of Wichita, Kansas,
this 1st day of AUGUST, 1995.

Bob Knight Mayor
Bob Knight

Pat Burnett Deputy City Clerk
Pat Burnett



Know all men by these presents that we,
the undersigned, have caused the land described in the surveyors
certificate to be platted into Lots to be known as "CHADSWORTH
COMMERCIAL 2ND ADDITION", Wichita, Sedgwick County, Kansas. The
utility easements are hereby granted as indicated for the construction
and maintenance of all public utilities. The wall easements are hereby
granted as indicated for the construction and maintenance of a private
screening wall and utility main lines and service lines are allowed to
cross these easements. The drainage and utility easements
are hereby granted as indicated for drainage purposes and for the
construction and maintenance of all public utilities. Access controls
as depicted on the face of the plat are hereby granted to the City of
Wichita, Kansas. The permitted entrance locations shall be as determined
by the City Engineer of the City of Wichita, Kansas.

Bruce A. Pearson
Bruce A. Pearson

Esther L. Pearson
Esther L. Pearson

Entered on transfer record this 14th day
of August, 1995.

Susan E. Crockett-Spoon County Clerk
Susan E. Crockett-Spoon



State of Kansas) *SS* The foregoing instrument acknowledged be-
fore me, this 12th day of JULY, 1995, by
Bruce A. Pearson and Esther L. Pearson, husband and wife.

Philip J. Meyer Notary Public
PHILIP J. MEYER

My App't. Exp. 5/5/97

PHILIP J. MEYER
NOTARY PUBLIC
STATE OF KANSAS

State of Kansas) *SS* This is to certify that this plat has been
Sedgwick County) filed for record in the office of the Register of Deeds, this 14th day
of AUGUST, 1995, at 3:30 o'clock P.M., and is duly
recorded.

Pat Kettler Register of Deeds
Pat Kettler

Ed Resg Deputy
Ed Resg

