

SHEET NO.	TOTAL SHEETS
1	6

CITY OF WICHITA, KANSAS
 MICHAEL E. LINDEBAK, P.E., CITY ENGINEER

STORM WATER SEWER IMPROVEMENTS

TO SERVE
 LOTS 7 THRU 10,
 COMOTARA INDUSTRIAL PARK 5TH ADDITION
 CITY OF WICHITA PRIV. PROJECT
 NO. 726PPS (607861)

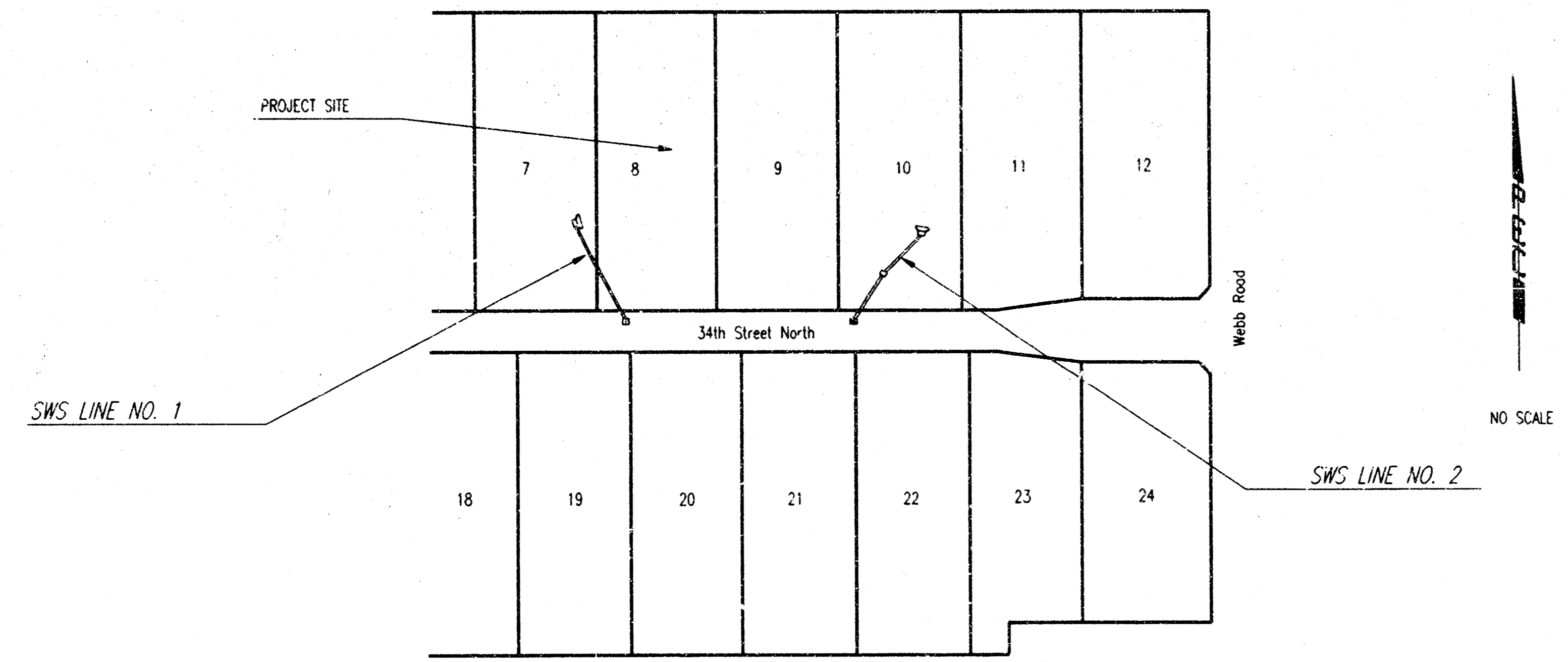
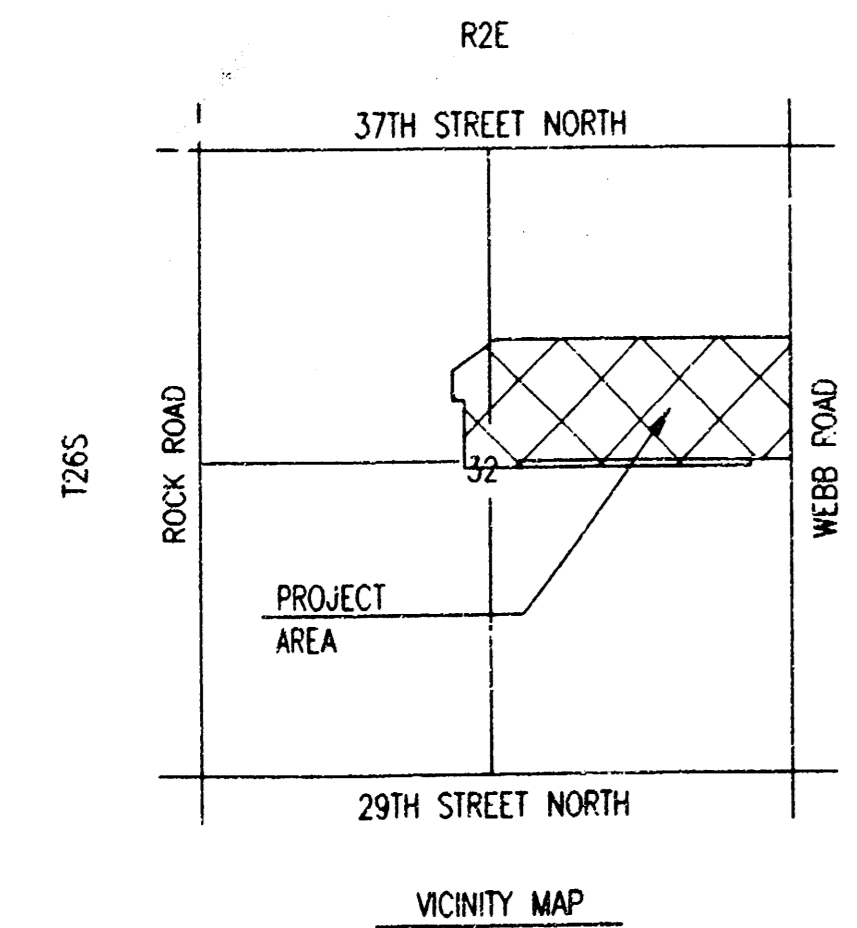
INDEX OF SHEETS

1. TITLE SHEET
2. PLAN & PROFILE - LINES 1 & 2
3. STD. AREA INLET & INLET PROT. DETAILS
4. SEDIMENT BARRIER & INLET PROT. DETAILS
5. STD. TYPE 1A CURB INLET DETAILS
6. PLAT

PROJECT SURVEY CONTROL

BM #1 - 7" CUT ON N. CURB 34TH ST. N.
 98' LT. WEBB RD.
 EL=1431.26

BM #2 - 7" CUT T.C. @ SE CORNER LOT 9
 @ 34TH ST. N. WEST OF WEBB RD.
 EL=1425.025



GENERAL NOTES

UNDERGROUND UTILITY SERVICE LINES AND OVERHEAD UTILITY POLE LINES ARE TO BE ADJUSTED AS NECESSARY BY OTHERS PRIOR TO CONSTRUCTION UNLESS THE PLANS SPECIFICALLY CALL FOR THEIR ADJUSTMENT BY THE CONTRACTOR. EXISTING UTILITIES AND THEIR LOCATION, AS SHOWN ON THE PLANS, REPRESENT THE BEST INFORMATION OBTAINABLE FOR DESIGN. LOCATION INFORMATION HAS BEEN OBTAINED FROM THE VARIOUS UTILITY COMPANIES AND IS EITHER FROM COMPANY RECORD DRAWINGS OR COMPANY PROVIDED FIELD LOCATIONS. THE CONTRACTOR WILL BE REQUIRED TO WORK AROUND EXISTING UTILITIES WITHIN THE RIGHT-OF-WAY WHICH DO NOT CONFLICT WITH PROPOSED CONSTRUCTION. CONTRACTOR SHALL SATISFY HIMSELF OF SUBSURFACE CONDITIONS PRIOR TO BIDDING.

TREES AND SHRUBS IN PUBLIC RIGHT-OF-WAY WHICH ARE IN DIRECT CONFLICT WITH PROPOSED NEW CONSTRUCTION SHALL BE REMOVED BY THE CONTRACTOR WITH THE ENGINEER'S APPROVAL. TREES AND SHRUBS WHICH ARE NOT IN DIRECT CONFLICT WITH PROPOSED NEW CONSTRUCTION SHALL BE SAVED AND PROTECTED FROM DAMAGE. RUBBLE FROM THE REMOVAL OF MISCELLANEOUS STRUCTURES SHALL BE DISPOSED OF ON SITES TO BE PROVIDED BY THE CONTRACTOR AND APPROVED AS NOTED. ALL DISPOSAL SITES MUST BE APPROVED BY THE KANSAS DEPARTMENT OF HEALTH AND ENVIRONMENT. MATERIAL EITHER STOCKPILED OR DISPOSED OF IN A FLOOD PLAIN WOULD REQUIRE A KANSAS STATE BOARD OF AGRICULTURE PERMIT. ANY MATERIAL DUMPED IN WATERS OF THE UNITED STATES OR WETLANDS IS SUBJECT TO U.S. CORPS OF ENGINEERS PERMITTING REGULATIONS. ANY MATERIAL BURIED OR STOCKPILED BEYOND APPROVED CONSTRUCTION LIMITS WOULD REQUIRE ADDITIONAL ARCHEOLOGICAL INVESTIGATIONS UNLESS BURIED IN A PREVIOUSLY APPROVED BORROW LOCATION.

EXCESS EXCAVATED MATERIAL AND EXCESS TOPSOIL SHALL BE STOCKPILED OR WASTED WITHIN THE PLAT LIMITS. THE CONTRACTOR SHALL CONTACT THE OWNER'S ARCHITECT AT 634-1111 FOR INFORMATION PERTAINING TO THE ACCEPTABLE LOCATIONS FOR THE DISPOSITION OF EXCESS MATERIAL.

CONTRACTOR SHALL PROVIDE A MINIMUM FIFTY-EIGHT (48) HOUR ADVANCE NOTICE (EXCLUDING WEEKENDS AND HOLIDAYS) PRIOR TO BEGINNING ANY EXCAVATION TO KANSAS ONE-CALL SYSTEM, A UTILITY LOCATION SERVICE, AT (316) 687-2470 TO REQUEST THE FOLLOWING UTILITY COMPANIES TO LOCATE ALL EXISTING LINES WITHIN THE PROJECT AREA: K.G.E. GAS, P. 7125 NATURAL GAS, K.G.E. ELECTRIC, SOUTHWESTERN BELL TELEPHONE, MULTIMEDIA CABLEVISION, CITY OF WICHITA SEWER MAINTENANCE AND CITY OF WICHITA WATER DEPARTMENT.

THE CONTRACTOR SHALL BE RESPONSIBLE FOR PRESERVING PROPERTY IRONS. THE CONTRACTOR WILL BE REQUIRED TO RE-ESTABLISH ANY PROPERTY IRONS WHICH ARE DAMAGED OR DESTROYED BY HIS CONSTRUCTION OPERATIONS. SUCH IRONS SHALL BE RE-ESTABLISHED BY A LICENSED LAND SURVEYOR IN ACCORDANCE WITH STATE LAWS.

THE WATER DEPARTMENT SHALL FIELD LOCATE WATER VALVES ONE TIME DURING CONSTRUCTION WHEN REQUESTED BY THE CONTRACTOR. IT SHALL BE THE CONTRACTOR'S RESPONSIBILITY TO PRESERVE SUCH FIELD LOCATIONS DURING THE CONSTRUCTION PROCESS. WATER VALVES, WATER VALVE BOXES OR FIRE HYDRANTS DAMAGED DURING CONSTRUCTION SHALL BE REPAIRED BY THE CONTRACTOR AT HIS OWN EXPENSE.

THE CONTRACTOR SHALL ADJUST WATER VALVE BOXES AS DIRECTED BY THE ENGINEER.

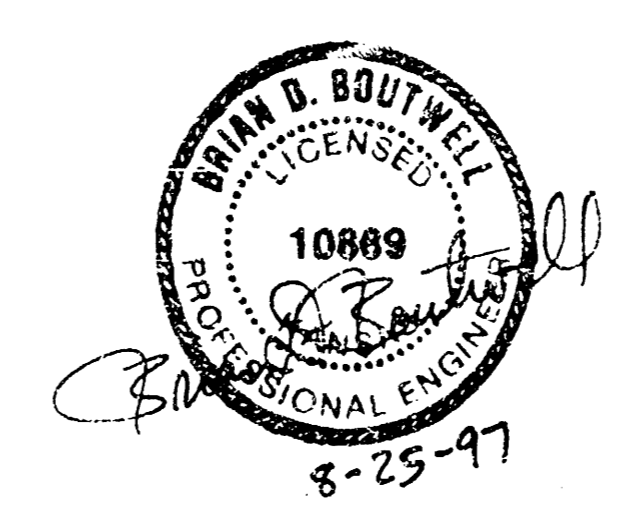
ALL LAWN/TURF AREAS DISTURBED BY CONSTRUCTION OF THE PROPOSED IMPROVEMENTS SHALL BE RESTORED WITH THE SAME GRASS/SOD AS EXISTING. RESTORATION OF DISTURBED AREAS SHALL INCLUDE, BUT NOT BE LIMITED TO, TOP SOIL PREPARATION, SEEDING, MULCH, AND/OR RESEEDING. ALL SEEDING/SODDING WORK SHALL BE IN ACCORDANCE WITH THE CITY OF WICHITA STANDARD SPECIFICATIONS AND THE CITY OF WICHITA ADMINISTRATIVE REGULATION NO. AR78 WHICH GOVERNS CLEANUP AND RESTORATION OF REPLACEMENT FOLLOWING CONSTRUCTION.

THE CONTRACTOR SHALL SEED ALL AREAS DISTURBED BY CONSTRUCTION ACTIVITIES WITH TEMPORARY RYE GRASS. THE TEMPORARY SEEDING MAY BE OMITTED ONLY IF OTHER SEEDING IS REQUIRED IN ACCORDANCE WITH PREVIOUS GENERAL NOTE. TEMPORARY SEEDING OR PERMANENT SEEDING/SODDING SHALL BE APPLIED WITHIN 14 DAYS AFTER THE AREA HAS BEEN DISTURBED.

INTERURBAN TRAFFIC GENERATED OUTSIDE THE PROJECT AREA AND LOCAL BUSINESS OR RESIDENTIAL TRAFFIC GENERATED WITHIN THE PROJECT AREA ARE TO BE CARRIED THROUGH CONSTRUCTION AS FURTHER PROMULGATED BY PROJECT SPECIAL PROVISIONS. THE CONTRACTOR SHALL UTILIZE BARRICADES, SIGNS, GUARDS, AND FLAGMEN IN ACCORDANCE WITH THE MANUAL ON UNIFORM TRAFFIC CONTROL DEVICES.

APPROVED AS NOTED
 By CITY ENGINEER OF WICHITA

Sanitary Sewers _____
 Storm Sewers _____
 Driveway Approaches _____
 Water Mains _____
 Paving _____



JUNE, 1997

PLANS PREPARED BY
 PROFESSIONAL ENGINEERING CONSULTANTS, P.A.
 ENGINEERS
 WICHITA, KANSAS

INSPECTION AND TESTING FOR THIS PROJECT IS TO BE PROVIDED BY A LICENSED CONSULTING ENGINEERING FIRM CONTRACTED BY THE OWNER/DEVELOPER. SAID INSPECTION TO BE IN ACCORDANCE WITH THE CITY OF WICHITA STANDARD CONSTRUCTION ENGINEERING PRACTICES AND CERTIFIED BY A LICENSED PROFESSIONAL ENGINEER. NO WORK SHALL BE PERFORMED IN DEDICATED EASEMENTS OR THE PUBLIC RIGHT-OF-WAY BY THE CONTRACTOR UNTIL SUCH INSPECTION IS ARRANGED FOR AND REQUIRED BONDS HAVE BEEN SUBMITTED TO AND APPROVED BY THE CITY; NOR SHALL ANY WORK BE COMMENCED IN DEDICATED EASEMENTS OR PUBLIC RIGHT-OF-WAY WITHOUT WRITTEN AUTHORIZATION BY THE CITY ENGINEER. IMPROVEMENTS PERFORMED UNDER THIS PROJECT SHALL NOT BE ACCEPTED BY THE CITY UNTIL ALL APPLICABLE DOCUMENTATION HAS BEEN SUBMITTED TO THE CITY ENGINEER. THIS MAY INCLUDE: AS-BUILT DRAWINGS, INSPECTION LOGS, TEST DOCUMENTATION, TV TAPES, AND A CERTIFICATE OF COMPLETION. THE ABOVE SHALL BE PERFORMED BY THE CONSULTING FIRM CONTRACTED TO INSPECT THIS PROJECT.

SCALE: 1"=40'

Sta. 11+85.3, Line No. 1
Construct Std. Type 1A Curb Inlet
L=6'-4", W=4'-4"
Install Inlet Protection
See Sh. 4 & 5

Sta. 21+88.1, Line No. 2
Construct Std. Type 1A Curb Inlet
L=6'-4", W=4'-4"
Install Inlet Protection
See Sh. 4 & 5

Sta. 20+95.5, Line No. 2
Construct Std. Area Inlet
L=3'-10", W=5'-4"
Install 92.6 L.F. 18" RCP (NE)
Install Inlet Protection
See Sh. 3

Sta. 10+00.0, Line No. 1 =
Existing Curb Inlet
Punch through inlet wall and begin
new SWS construction.
Grout new SWS pipe in-place, watertight,
with non-shrink grout.
Reshape inlet floor as necessary to
provide smooth flow.
Install 185.3 L.F. 18" RCP (NW)

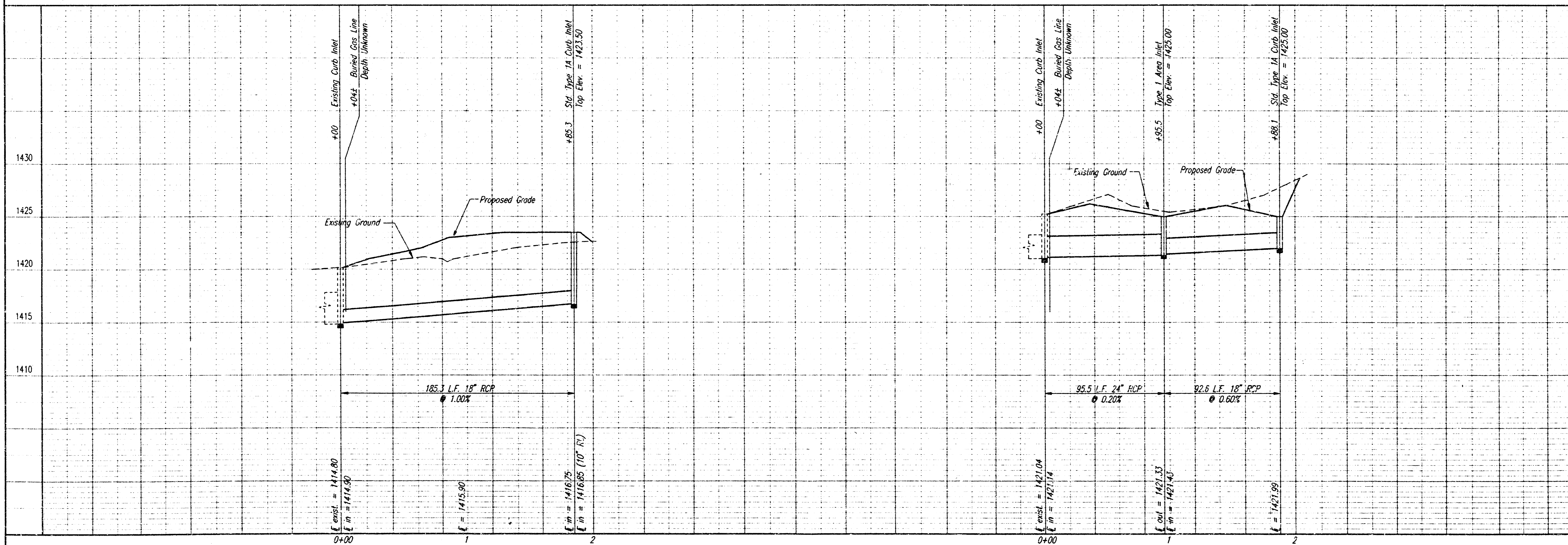
Sta. 20+00.0, Line No. 2 =
Existing Curb Inlet
Punch through inlet wall and begin
new SWS construction.
Grout new SWS pipe in-place, watertight,
with non-shrink grout.
Reshape inlet floor as necessary to
provide smooth flow.
Install 95.5 L.F. 24" RCP (NE)

NEW BUILDING

34TH STREET NORTH

CAUTION !!!
Buried Gas Line

CAUTION !!!
Buried Gas Line



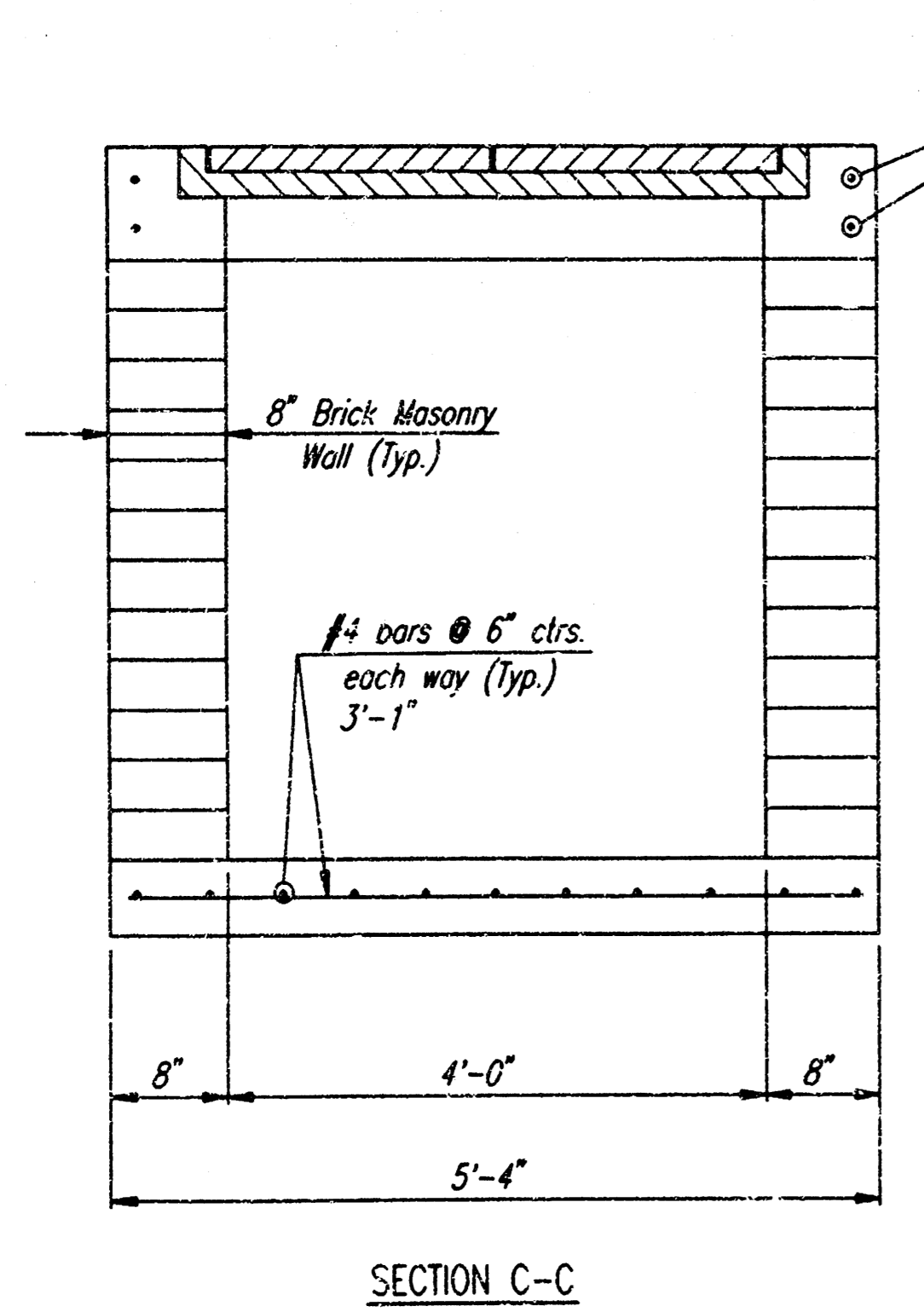
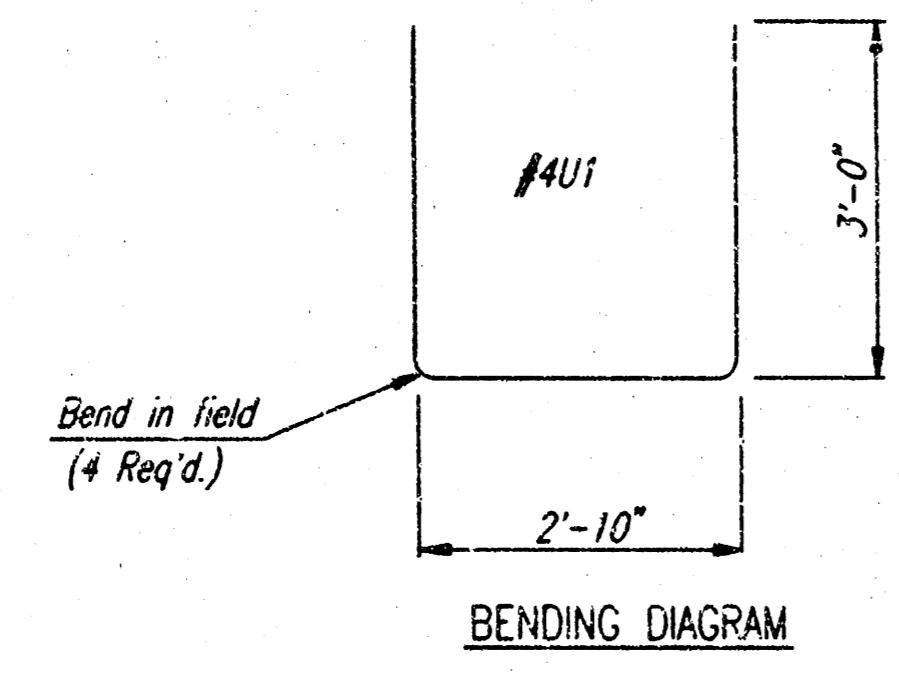
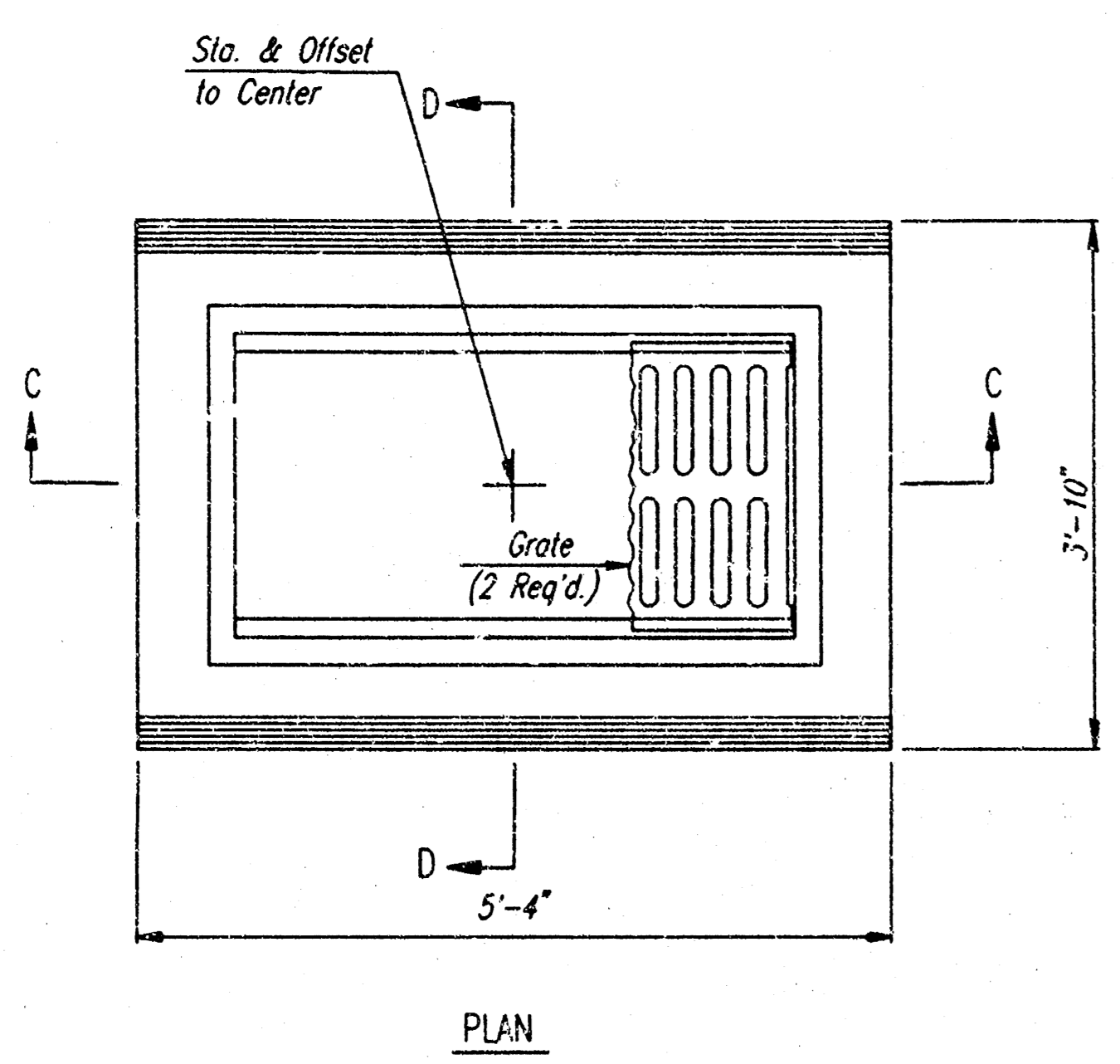
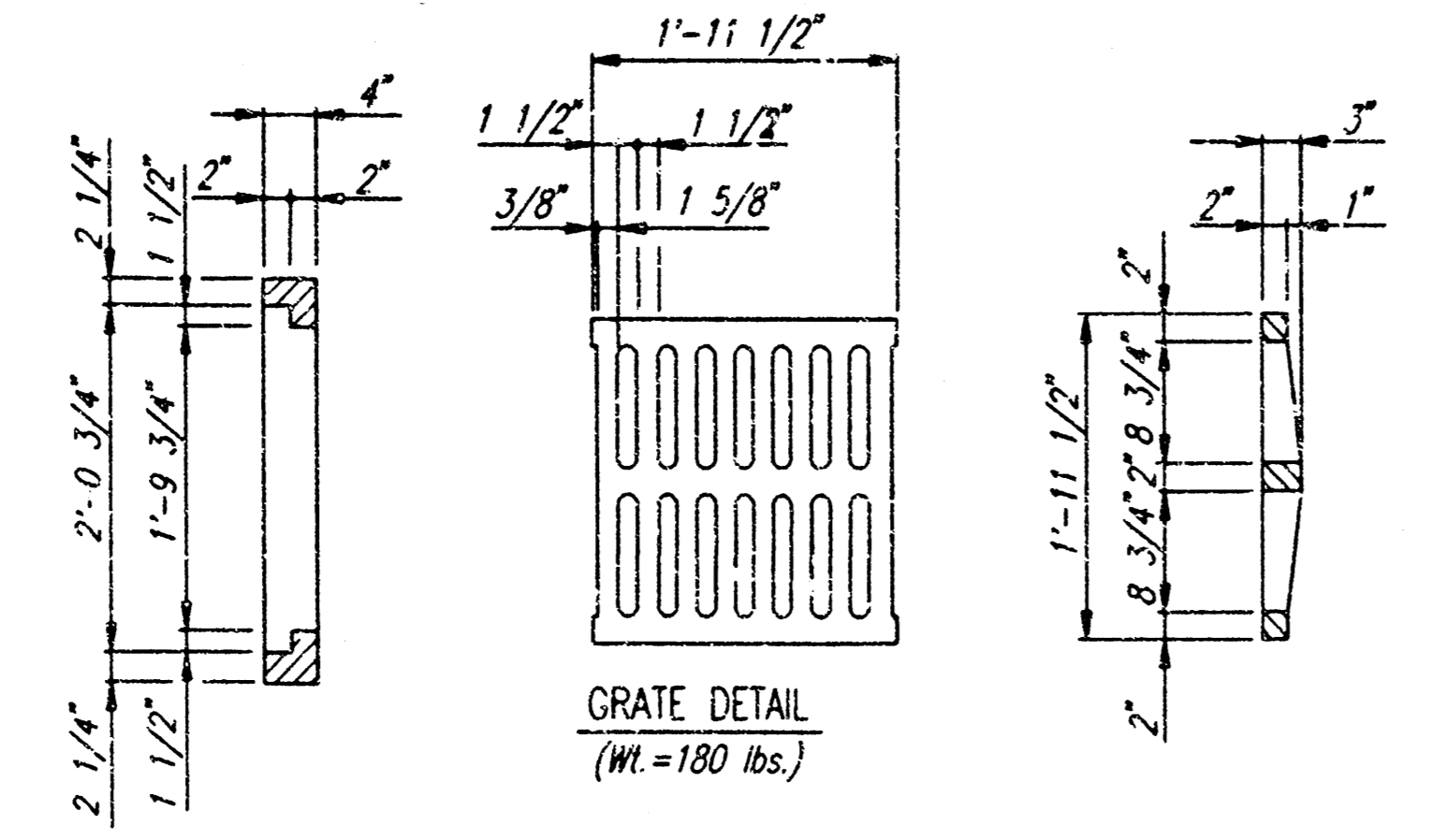
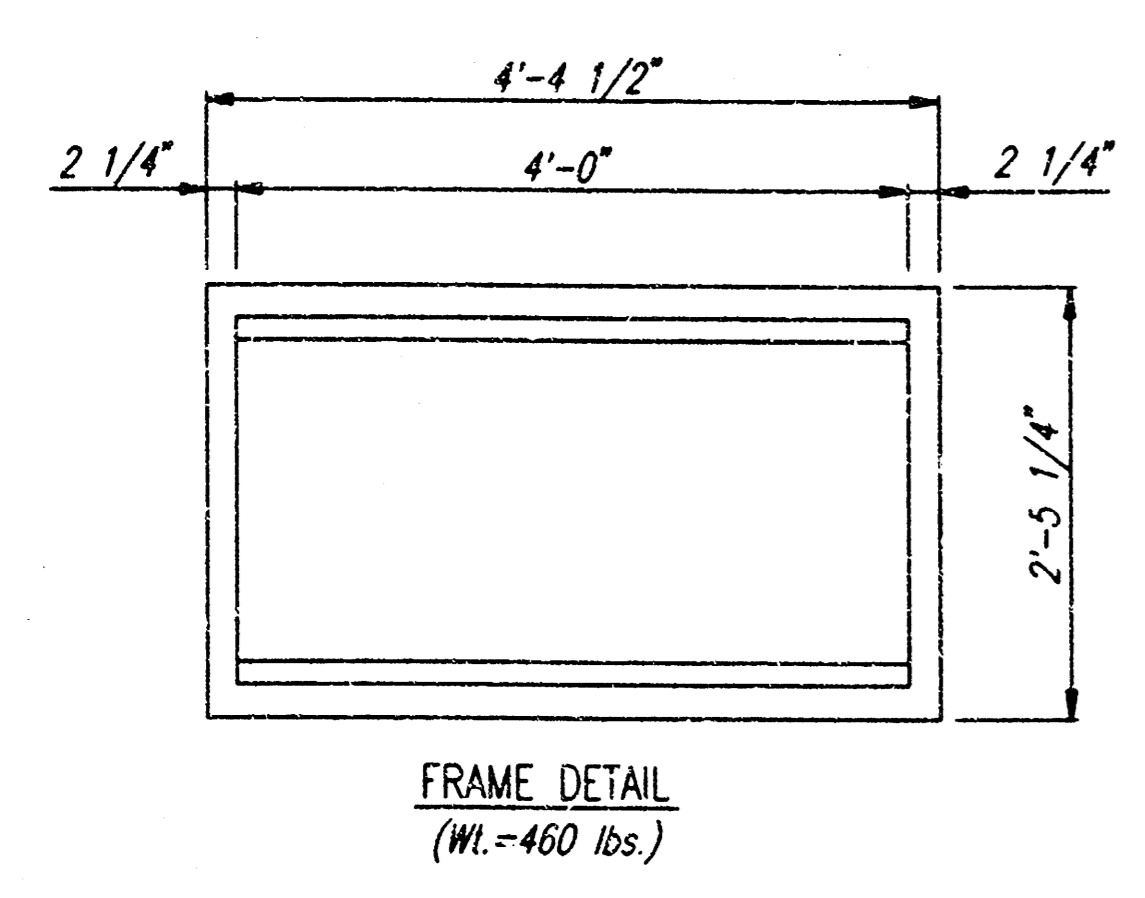
CONCRETE INDUSTRIAL PARK 5TH ADDITION
SWS LINES NO. 1 & 2

PROFESSIONAL ENGINEERING CONSULTANTS, P.A.
WICHITA, KANSAS

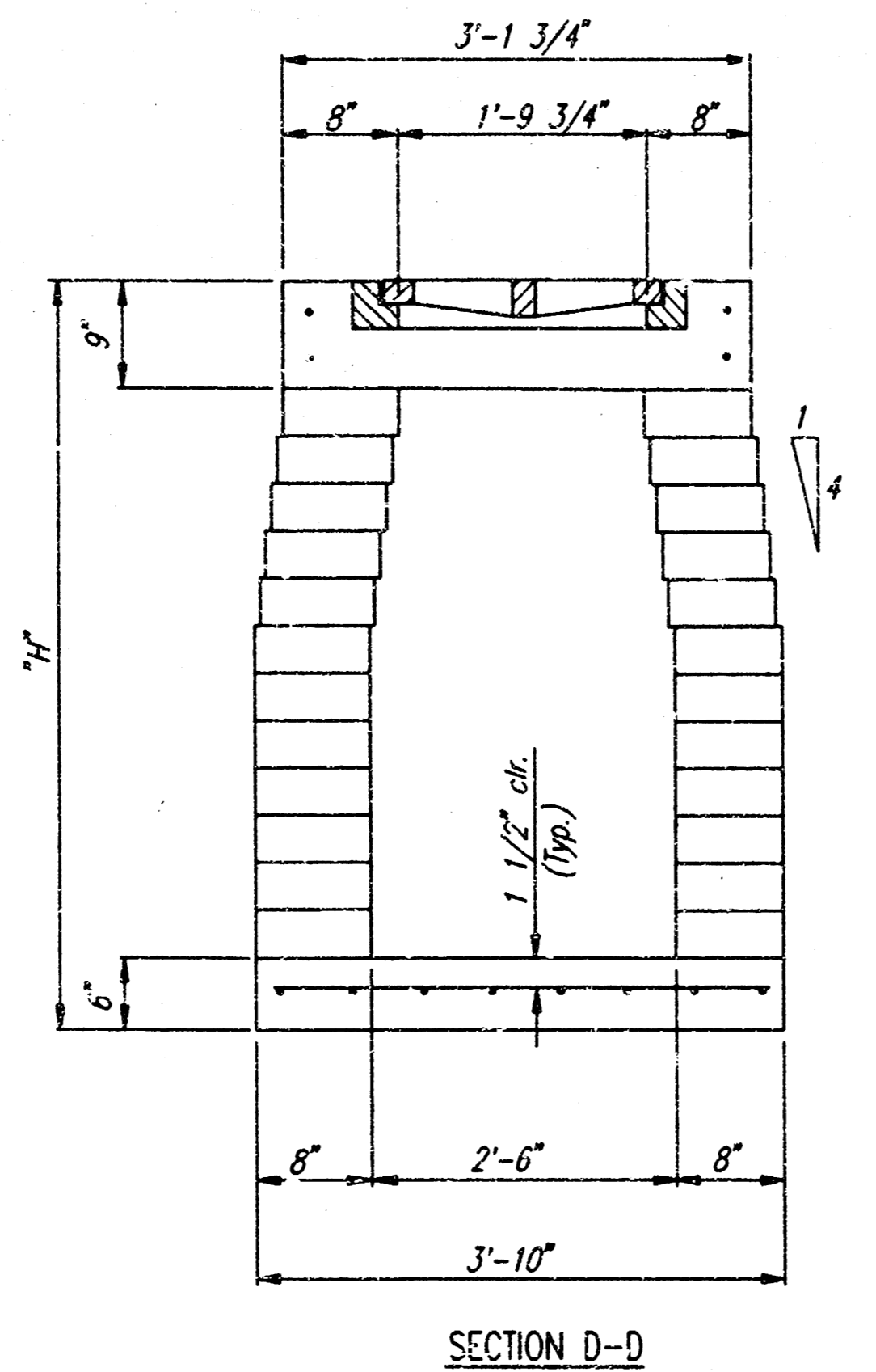
Job No. 97246-1
Date JUNE, 1997
Designed by DMR
Drawn by DEP

DSMR: DRC OPER. DAR SCALE: 1"=40.00
0:1997\97246\001\SWSPLAN 06-27-1997 10:16:37 am

SHEET NO.	TOTAL SHEETS
3	6



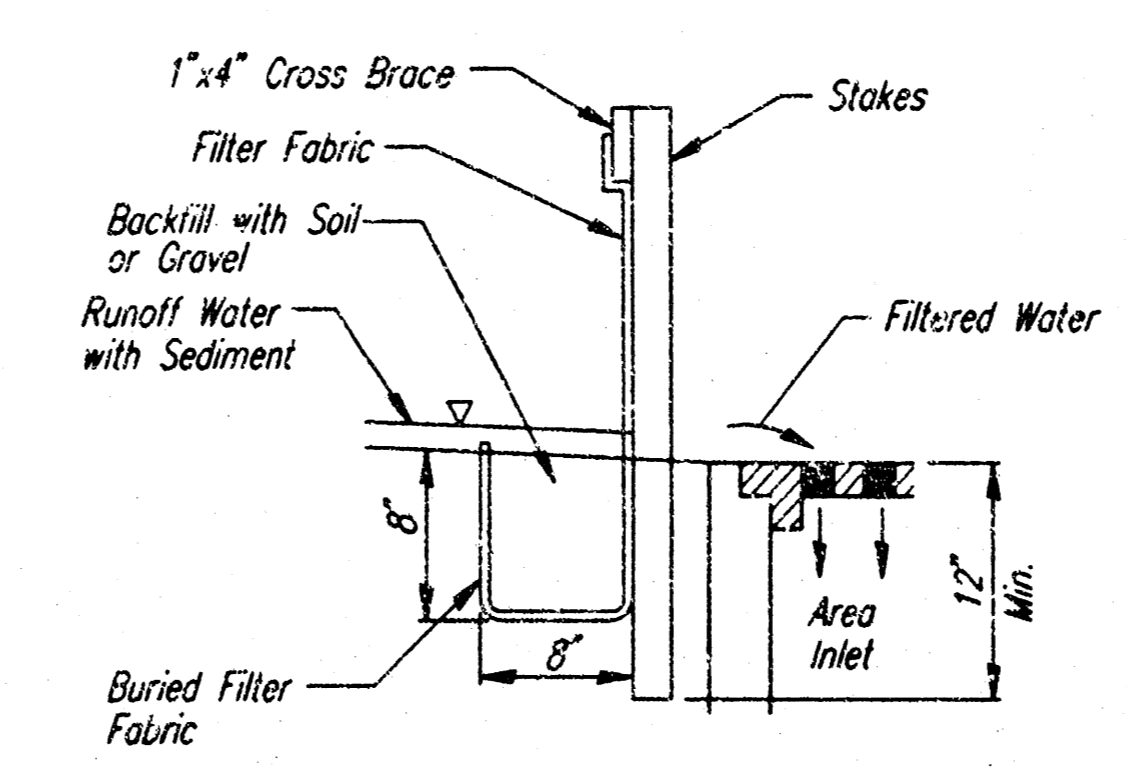
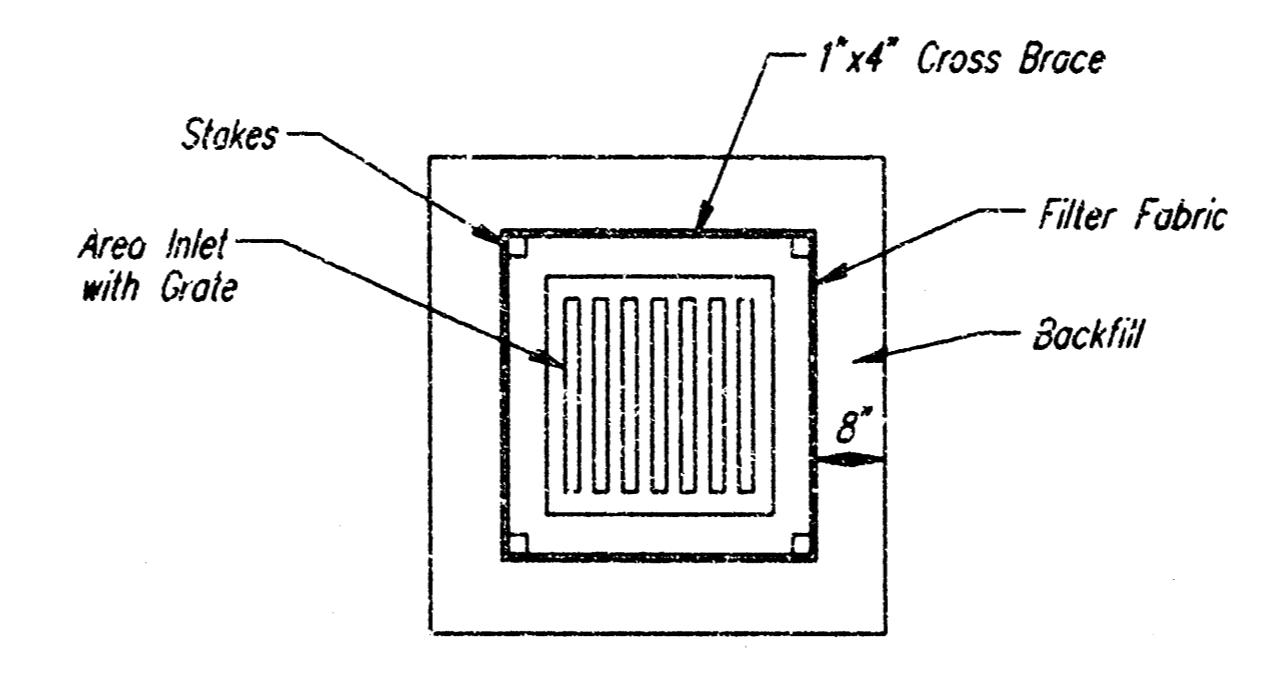
AREA INLET



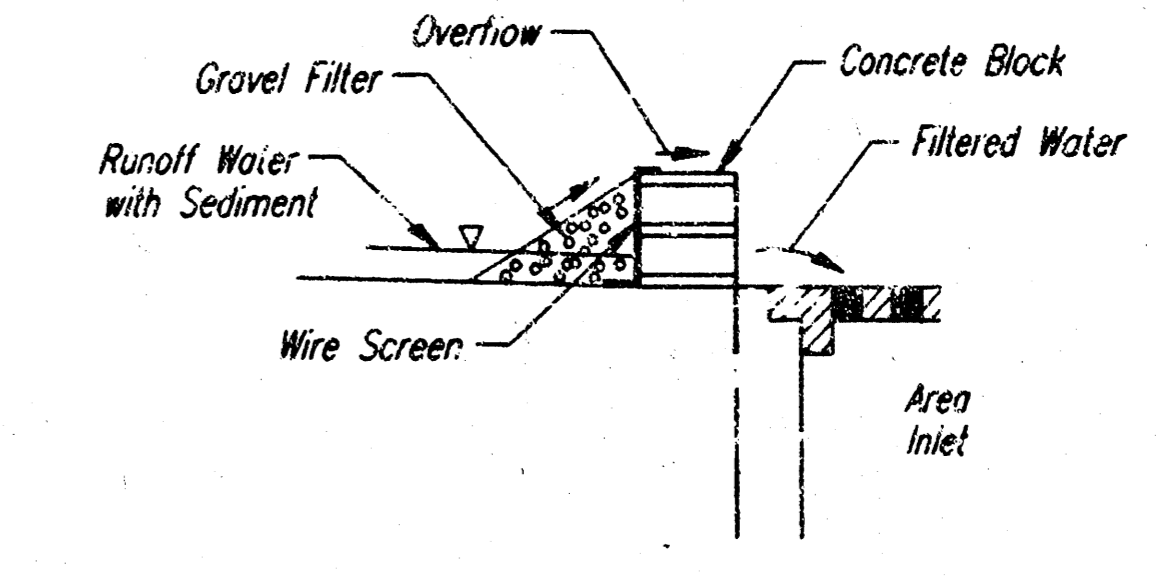
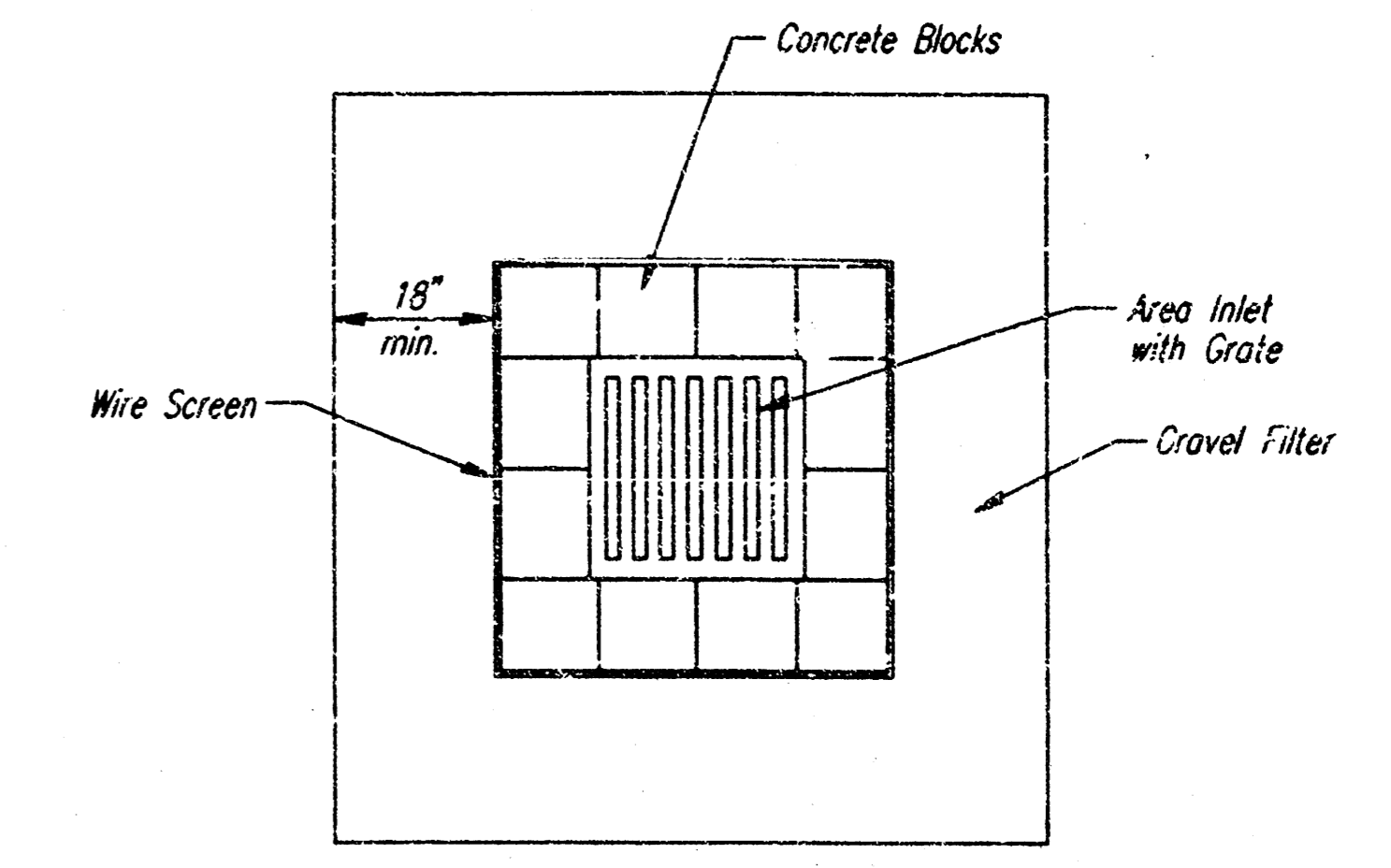
SECTION D-D

GENERAL NOTES

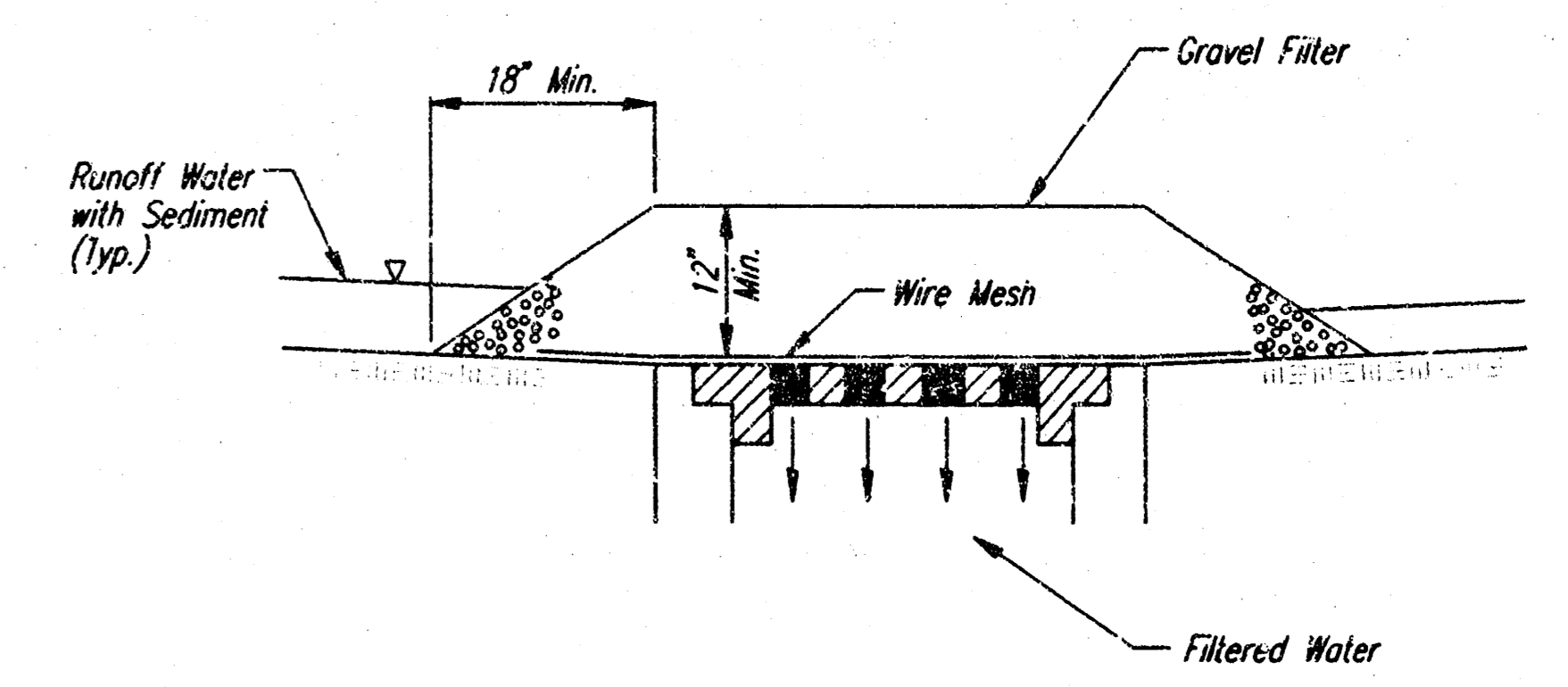
CONCRETE SHALL BE C.G.P. STANDARD PAVING MIX. ALL EXPOSED EDGES SHALL BE FINISHED WITH AN APPROVED EDGING TOOL.
 REINFORCING STEEL SHALL BE A MINIMUM GRADE 40, A.S.T.M. A615. ALL DIMENSIONS RELATIVE TO PLACEMENT OF REINFORCING ARE TO THE CENTERLINE OF BARS UNLESS OTHERWISE NOTED.
 INLET CASTINGS SHALL BE MANUFACTURED USING GOOD QUALITY GRAY IRON CONFORMING TO CLASS 30 OF A.S.T.M. DESIGNATION A-48. DIMENSIONS AND WEIGHTS SHOWN ON THE DETAILED DRAWINGS SHALL BE CONSIDERED AS MINIMUM REQUIREMENTS AND ANY DEVIATIONS FROM THE DIMENSIONS SHOWN MUST BE SPECIFICALLY APPROVED. THE FINISHED CASTINGS SHALL BE OF UNIFORM QUALITY, FREE FROM BLOWHOLES, POROSITY, HARD SPOTS, SHRINKAGE DISTORTIONS OR OTHER DEFECTS.
 CONSTRUCTION REQUIREMENTS AND MATERIALS FOR MASONRY WALLS SHALL CONFORM TO THE REQUIREMENTS OF THE STANDARD SPECIFICATIONS.
 INLET FLOOR SHALL BE SHAPED WITH UNREINFORCED CONCRETE (8 SACK SAND MIX) TO CREATE FLOW CHANNELS AND TO INCREASE HYDRAULIC EFFICIENCY SUCH THAT THE INLET WILL BE SELF CLEANING BETWEEN ALL INLET AND/OR OUTLET PIPES.



AREA INLET PROTECTION
FILTER FABRIC



AREA INLET PROTECTION
BLOCK AND GRAVEL FILTER



AREA INLET PROTECTION
GRAVEL AND WIRE MESH

GENERAL NOTES
INLET PROTECTION

- INLET PROTECTION METHOD MAY BE ANY OF THE APPLICABLE TYPES SHOWN, AT THE CONTRACTOR'S OPTION.
- GRAVEL FILTER SHALL BE A DURABLE, WELL-GRADED SAND-GRAVEL OR CRUSHED STONE, MAXIMUM 1-1/2 IN. SIPE. AS AN ALTERNATE GRAVEL FILLED BAGS OF BURLAP OR OTHER FABRIC MAY BE USED. WHERE BAGS ARE USED, THE WIRE SCREEN, WHERE SHOWN, MAY BE OMITTED.
- FILTER FABRIC, WHERE USED, SHALL BE RESISTANT TO ULTRAVIOLET LIGHT. MATERIALS MAY BE SUPPLIED BY THE FOLLOWING MANUFACTURERS:

MIRAFI, INC.	-	100X
HOECHST FIBERS INDUSTRIES	-	TREVIRA 1115
EXXON	-	TYPAR 3301 W

 MATERIALS SUPPLIED BY THE ABOVE NAMED MANUFACTURERS SHALL BE ACCEPTED UPON VISUAL INSPECTION BY THE ENGINEER. OTHER COMPARABLE MATERIALS MAY BE USED IF APPROVED BY THE ENGINEER.
- INLET PROTECTION SHALL BE ERECTED AS SOON AS THE STRUCTURE HAS BEEN BACKFILLED. MEASURES SHALL BE TAKEN TO PRECLUDE ENTRY OF SEDIMENT INTO THE STORM WATER SEWER SYSTEM DURING CONSTRUCTION OF THE STRUCTURE.
- REMOVAL AND DISPOSAL OF ACCUMULATED SILT AND DEBRIS AND/OR REMOVAL AND RECONSTRUCTION OF INLET PROTECTION INSTALLATIONS SHALL BE PERFORMED THROUGHOUT THE PROJECT LIFE WHENEVER DEBRIS REACHES ONE-THIRD THE BARRIER HEIGHT, OR AS DEEMED NECESSARY BY THE ENGINEER. ULTIMATE REMOVAL AND DISPOSAL OF INLET PROTECTION AND DEBRIS WILL BE PERFORMED BY THE CONTRACTOR AFTER COMPLETION OF THE PROJECT.

COMOTARA INDUSTRIAL PARK 5TH ADDITION

**STD. AREA INLET DETAILS AND
INLET PROTECTION DETAILS**

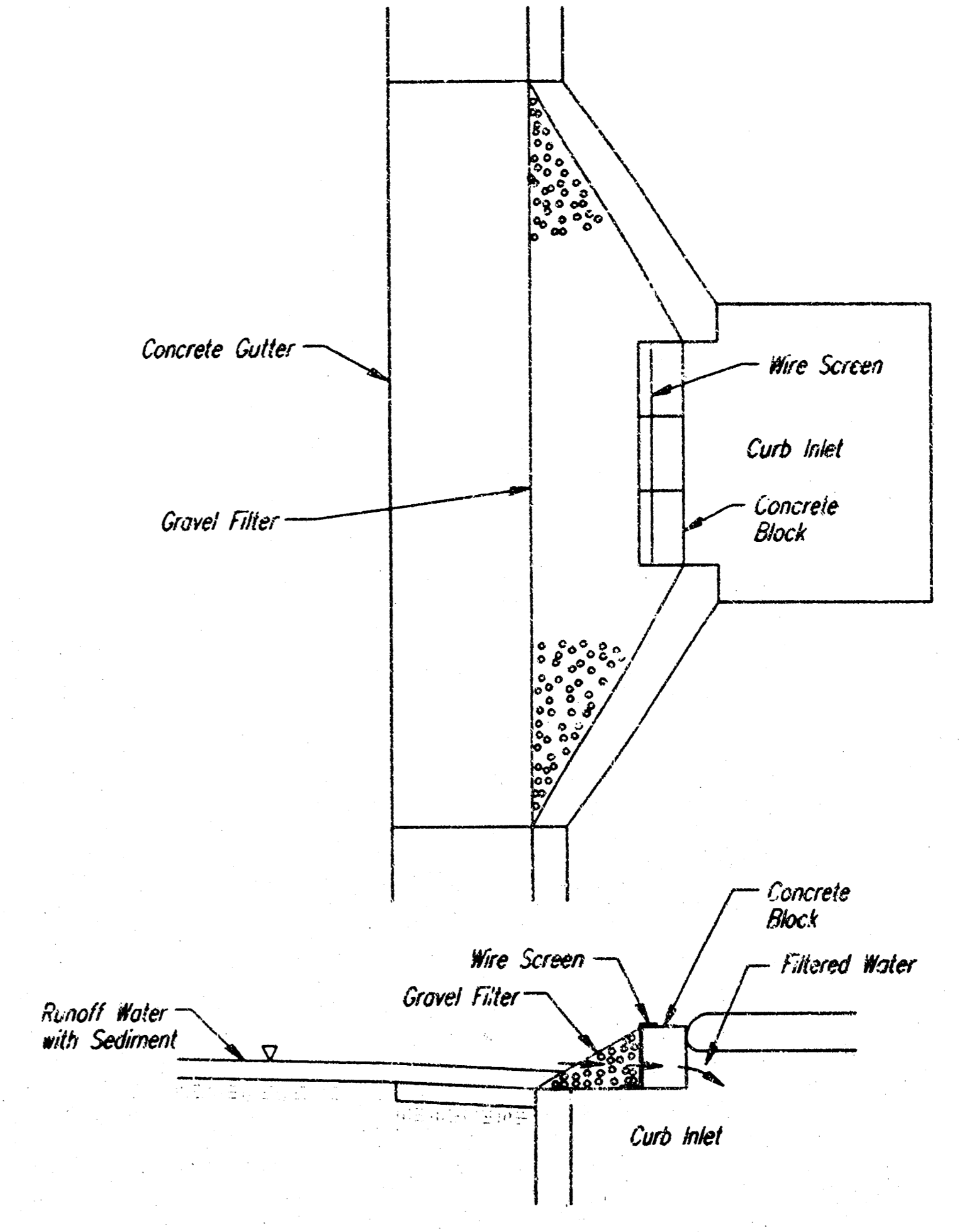
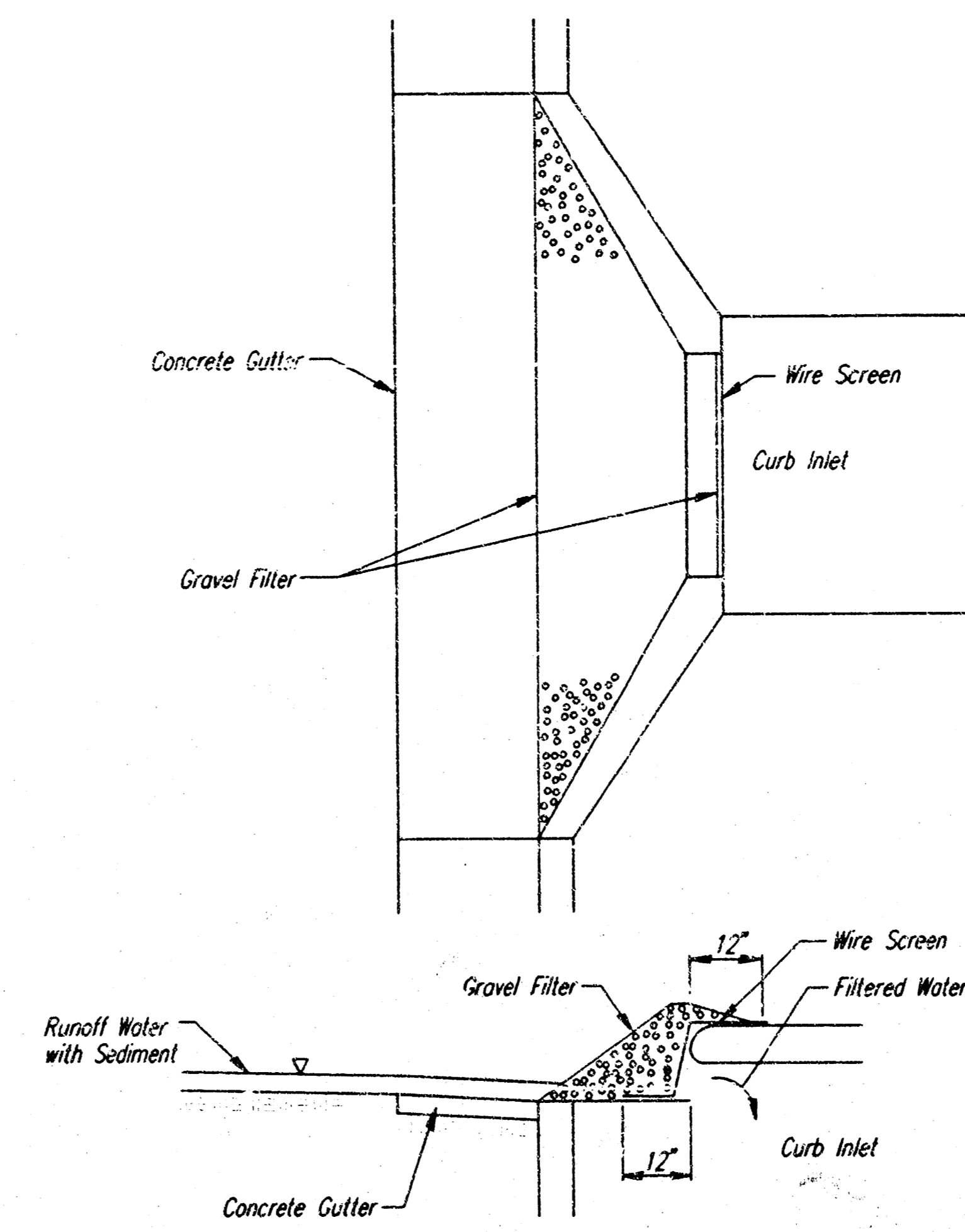
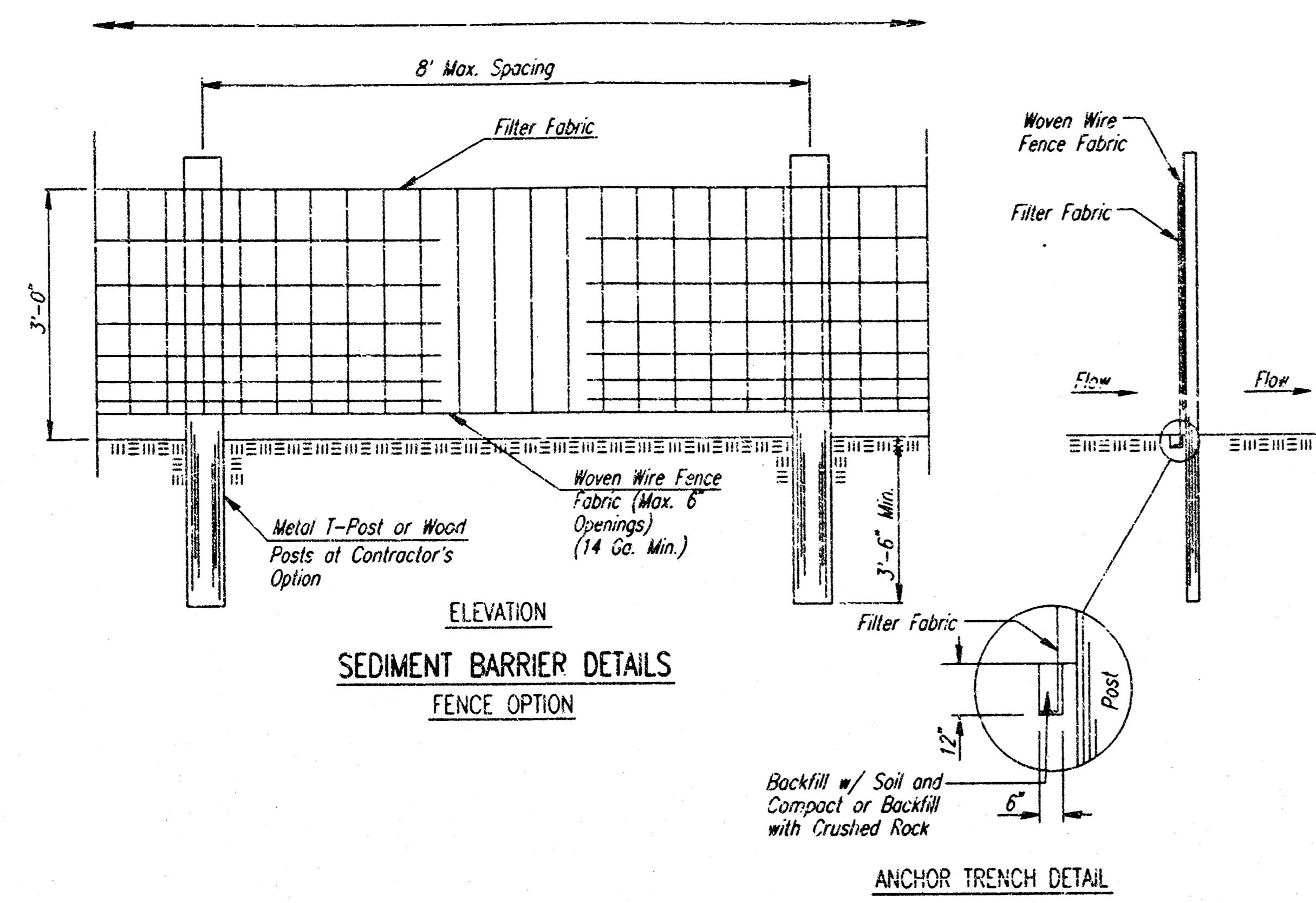
PROFESSIONAL ENGINEERING CONSULTANTS, P.A.
ENGINEERS
WICHITA, KANSAS

Designed by	DW	Checked by	
Drawn by	DEP	Date	JUNE, 1997
		Job No.	97246-1

DESIGN: JAE, GREF, DAP. SCALE: 1"=1'-0"
 01/199 (13/22/96) (MS/DLC) 06-12-1997 9:24:41 am

SHEET NO.	TOTAL SHEETS
4	5

See Sh. No. 3 for Inlet Protection General Notes

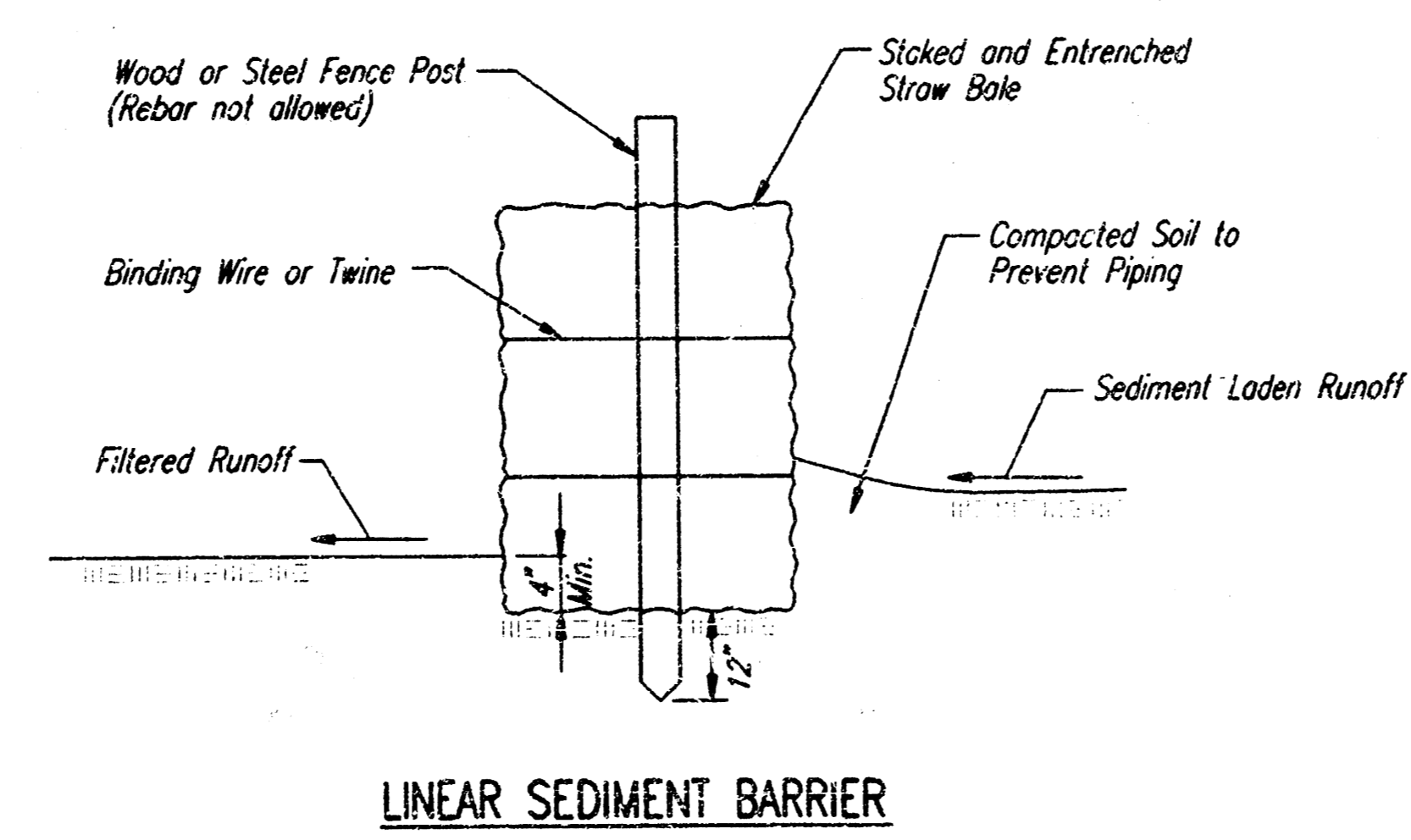


- SEDIMENT BARRIERS SHALL BE INSTALLED AT LOCATIONS SHOWN ON THE PLANS OR AS DIRECTED BY THE ENGINEER. ADDITIONAL SEDIMENT BARRIERS WILL BE INSTALLED AT LOCATIONS AS DIRECTED BY THE ENGINEER WITH NO ADJUSTMENT IN UNIT PRICE.
- SEDIMENT BARRIERS SHALL BE ERECTED PRIOR TO THE COMMENCEMENT OF EARTHWORK OPERATIONS IN A GIVEN BASIN. REMOVAL AND DISPOSAL OF ACCUMULATED SILT AND DEBRIS AND/OR REMOVAL AND RECONSTRUCTION OF SEDIMENT BARRIERS WILL BE PERFORMED THROUGHOUT THE PROJECT LIFE WHEN DEBRIS REACHES ONE-THIRD THE FENCE HEIGHT OR AS DEEMED NECESSARY BY THE ENGINEER. SEDIMENT BARRIERS AND ACCUMULATED DEBRIS SHALL BE REMOVED AND DISPOSED OF BY THE CONTRACTOR AFTER TURF COVER HAS BEEN ESTABLISHED, UNLESS OTHER ARRANGEMENTS HAVE BEEN AGREED TO.
- FILTER FABRIC FOR FENCE OPTION SEDIMENT BARRIERS SHALL BE RESISTANT TO ULTRAVIOLET LIGHT. MATERIALS MAY BE SUPPLIED BY THE FOLLOWING MANUFACTURERS:

MIRAFI, INC.	-	100X
HOECHST FIBERS INDUSTRIES	-	TREVIRA 1115
EXXON	-	TYPAR 3301 W

MATERIALS SUPPLIED BY THE ABOVE NAMED MANUFACTURERS SHALL BE ACCEPTED UPON VISUAL INSPECTION BY THE ENGINEER. OTHER COMPARABLE MATERIALS MAY BE USED IF APPROVED BY THE ENGINEER.

FILTER FABRIC SHALL BE ATTACHED TO FENCE FABRIC BY MEANS OF THE WIRES OR HOG RINGS PRIOR TO ATTACHMENT OF FENCE/FABRIC COMBINATION ONTO THE POSTS.
- BALES USED FOR SEDIMENT BARRIERS MAY BE EITHER HAY OR STRAW, PROVIDED THEY ARE SOUND AND INTACT.



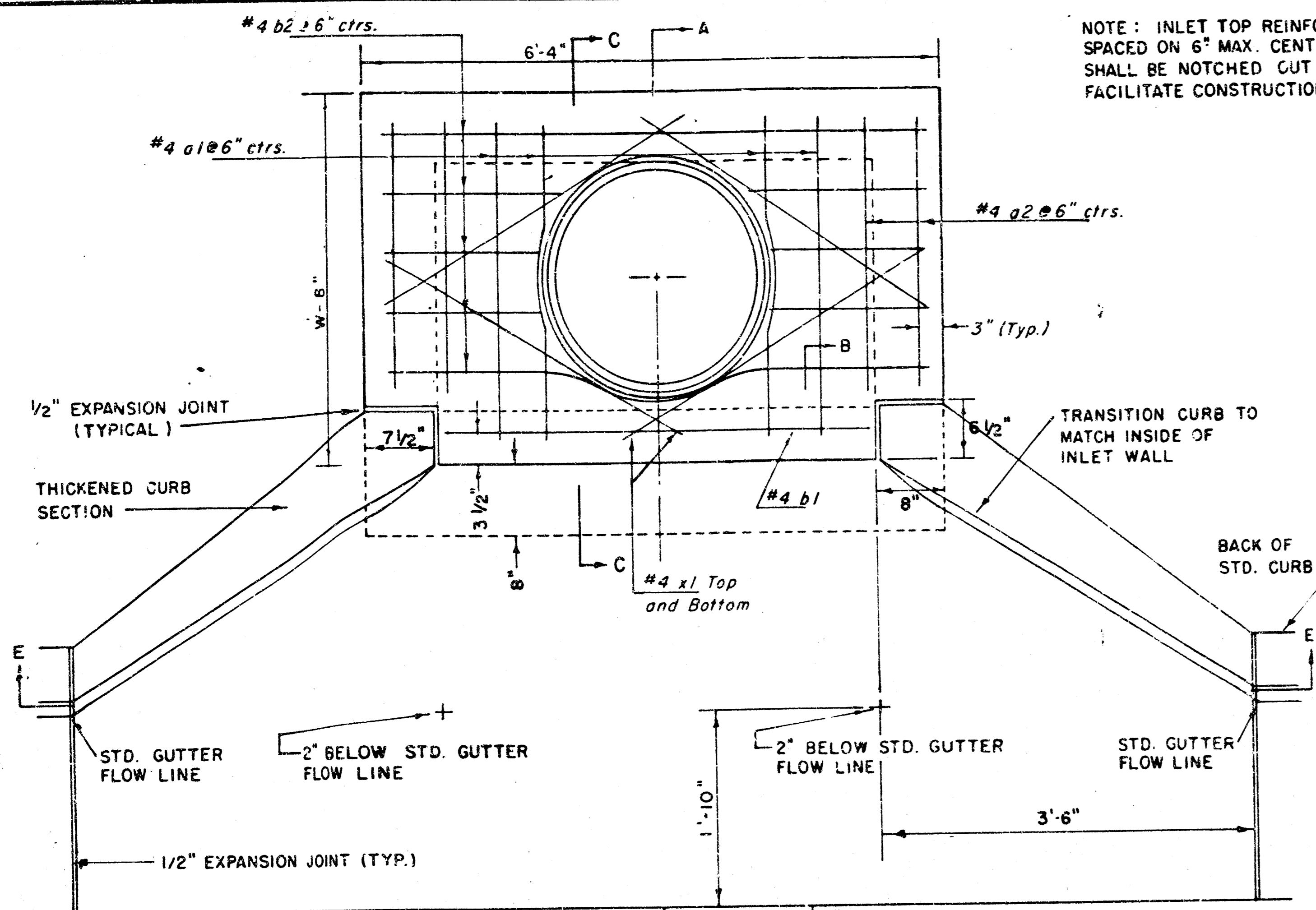
CSNR: OFFER: DAR SCALE: 1"=1'-00"
 01/19/97 197246 001 SWDIT:32 06-12-1387 9.31.02 am

COMOTARA INDUSTRIAL PARK 5TH ADDITION

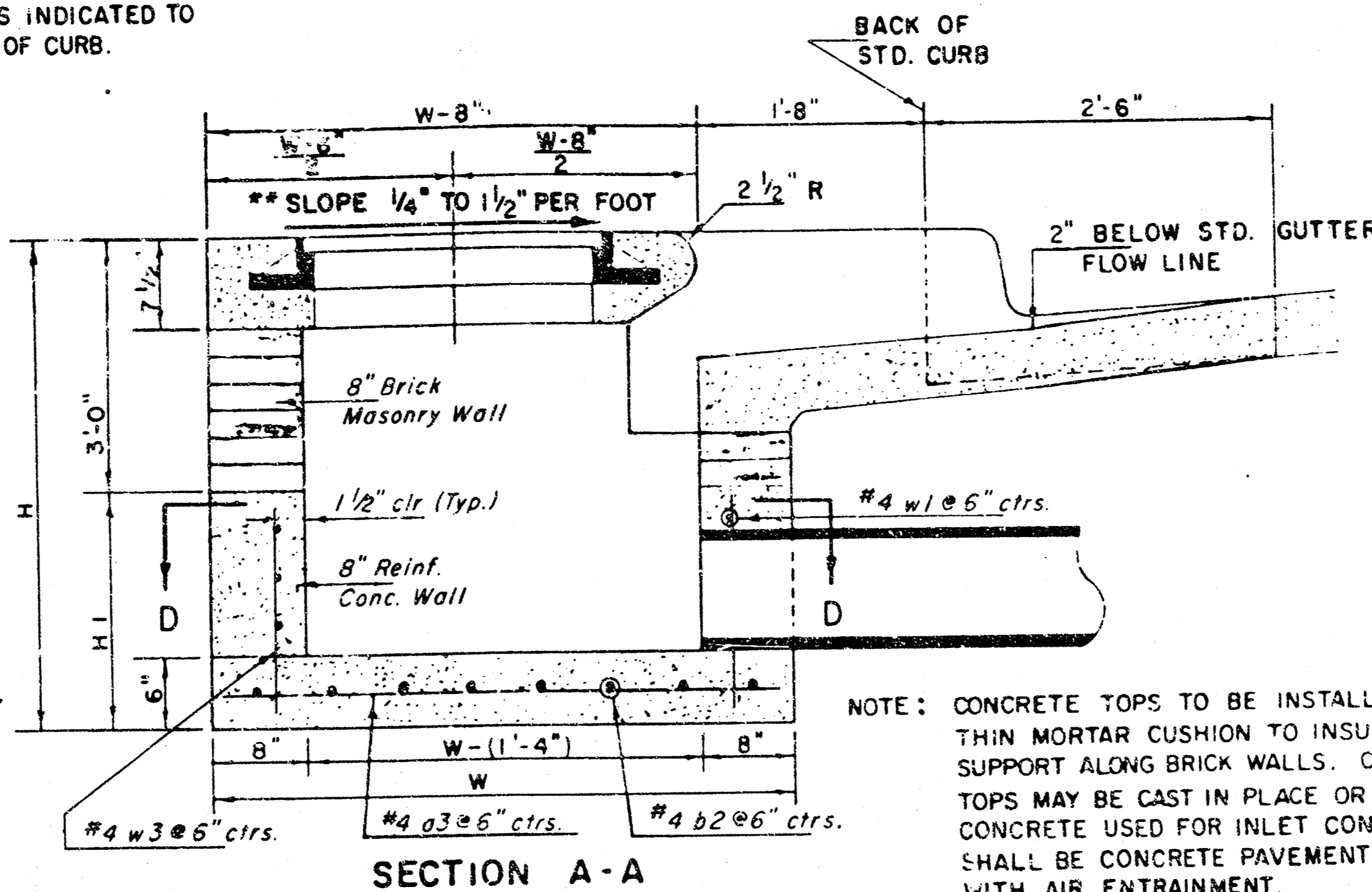
**SEDIMENT BARRIER AND
INLET PROTECTION DETAILS**

PROFESSIONAL ENGINEERING CONSULTANTS, P.A.
ENGINEERS
WICHITA, KANSAS

Designed by	DAR	Checked by	
Drawn by	DEP	Date	JUNE, 1997
		Job No.	97246-1



NOTE: INLET TOP REINFORCING SHALL BE SPACED ON 6" MAX. CENTERS. INLET LIDS SHALL BE NOTCHED CUT AS INDICATED TO FACILITATE CONSTRUCTION OF CURB.



NOTE: CONCRETE TOPS TO BE INSTALLED ON THIN MORTAR CUSHION TO INSURE FULL SUPPORT ALONG BRICK WALLS. CONCRETE TOPS MAY BE CAST IN PLACE OR PRECAST. CONCRETE USED FOR INLET CONSTRUCTION SHALL BE CONCRETE PAVEMENT MIX WITH AIR ENTRAINMENT.

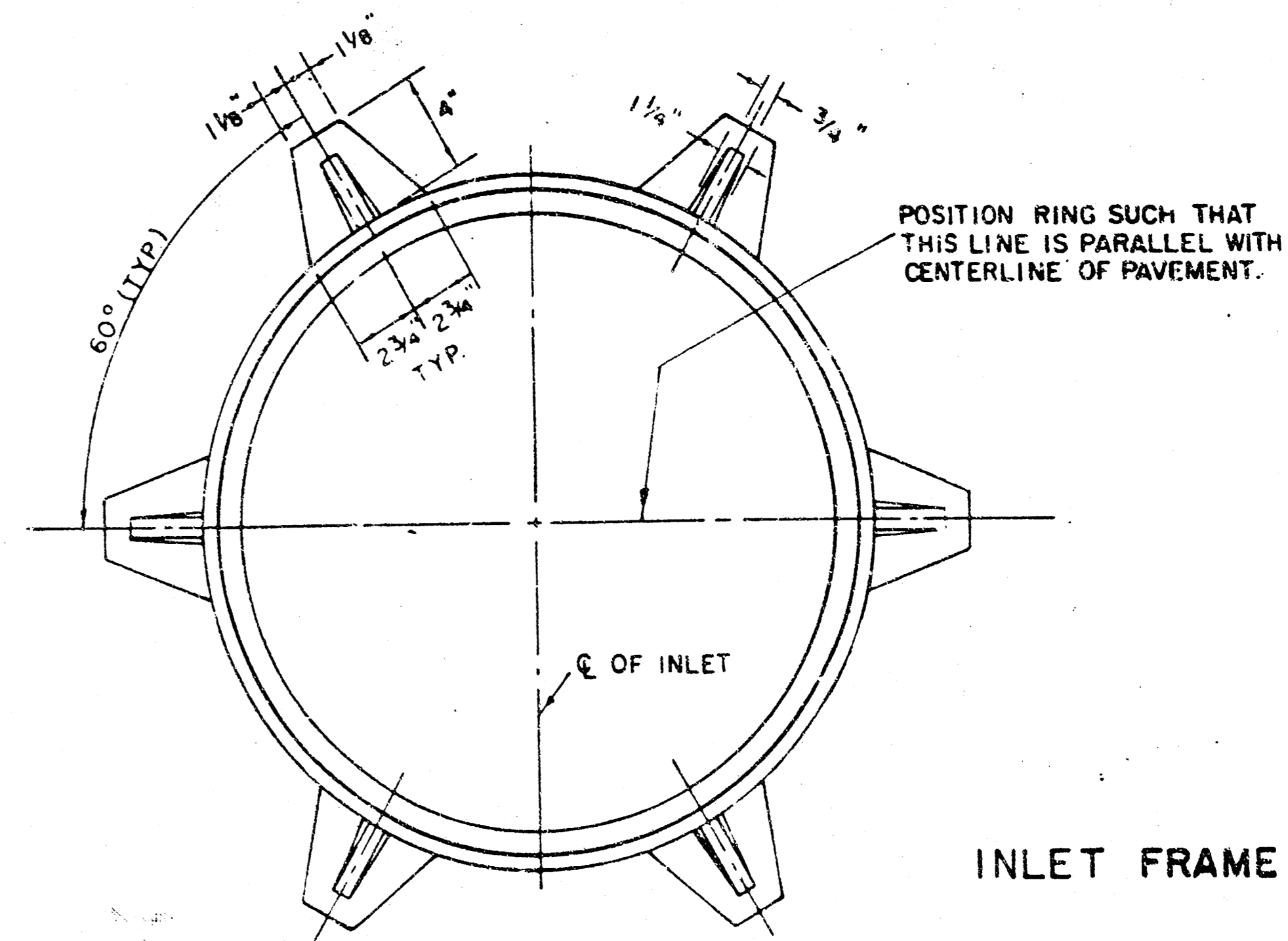
NOTE: CONTRACTOR SHALL HAVE THE OPTION OF CONSTRUCTING 8" BRICK MASONRY WALLS BETWEEN THE CONCRETE INLET BASE AND TOP ON THIS INLET WHEN W = 6'-4" AND H = 7'-0" OR LESS.

ADDITIONAL CURB AND GUTTER CONSTRUCTION NECESSARY TO CONNECT SET-BACK INLET TO PAVEMENT WILL BE PAID FOR AT THE UNIT PRICE BID FOR EACH INLET HOOKUP.

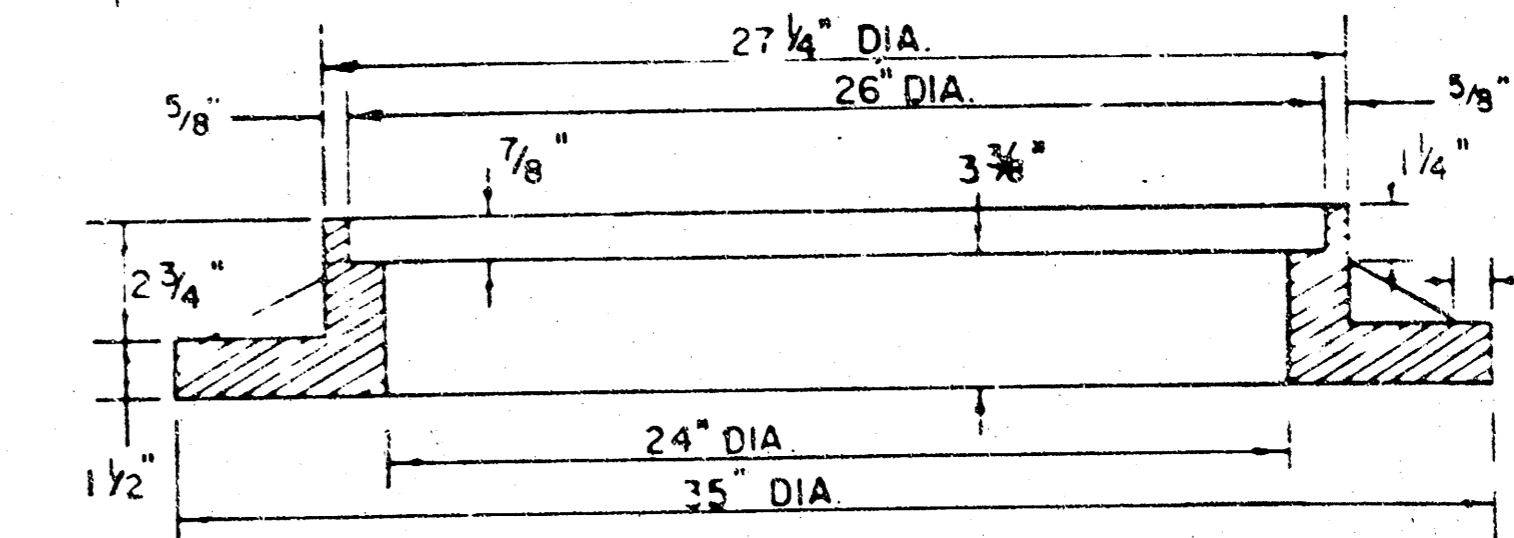
INLET INVERT SHALL BE SHAPED WITH 8 SACK SAND MIX CONCRETE TO CREATE FLOW CHANNELS AND TO INCREASE HYDRAULIC EFFICIENCY SUCH THAT THE INLET WILL BE SELF-CLEANING BETWEEN ALL INLET AND/OR OUTLET PIPES.

THE ENDS OF ALL PIPES INSTALLED IN INLETS SHALL BE CUT OFF FLUSH WITH THE INSIDE FACE OF THE INLET WALL.

** NOTE: Slope of Inlet Tops to match Sidewalk or Parking Slopes within Limits indicated.



WEIGHT = 180 LBS.



SEE CITY OF WICHITA STANDARD MANHOLE FRAME AND COVER DETAIL SHEET FOR COVER DETAILS TO BE USED WITH INLET FRAME.

NOTE: EXPANSION JOINT ONLY IN CURB AREA WITH CONC. PAVEMENT.

PLAN

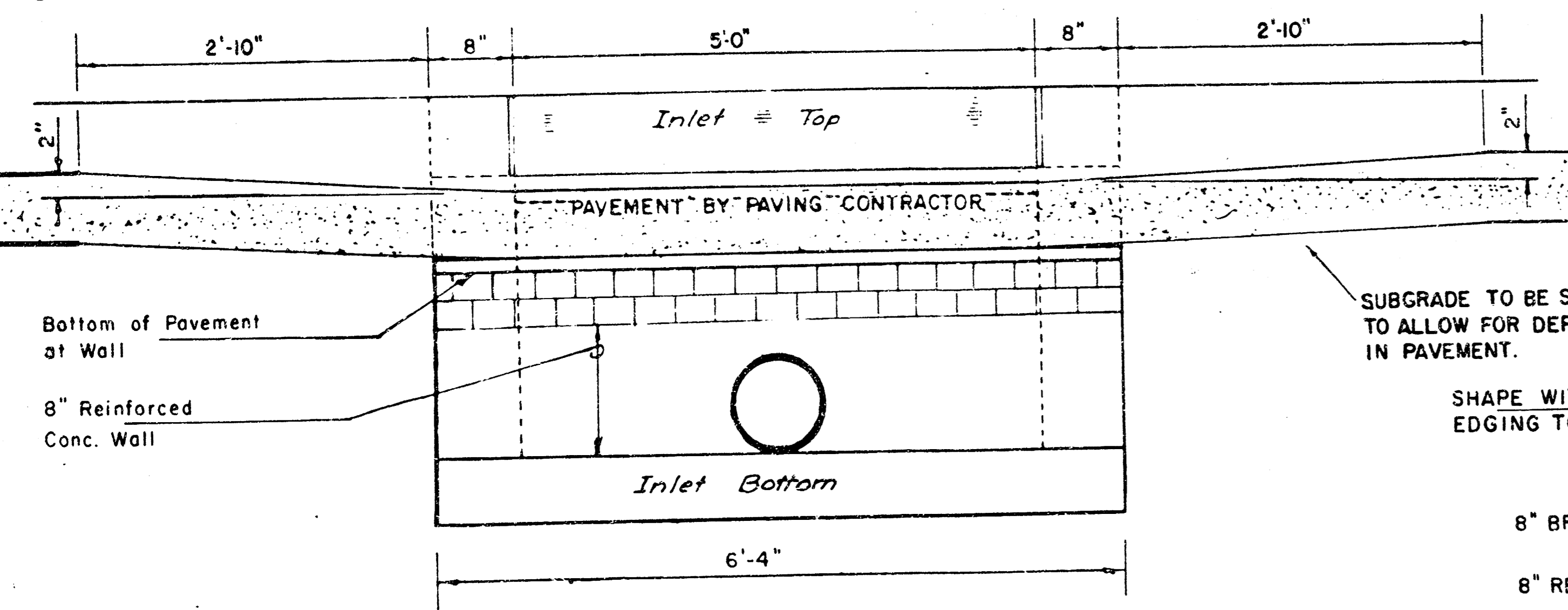
BENDING DIAGRAM

PRECAST SLAB AND FLOOR REINFORCING									
Mark	Size	No.	Length	No.	Length	No.	Length	No.	Length
a1	#4	6	6'-7"	6	8'-7"	6	10'-7"	6	12'-7"
a2	#4	4	8'-0"	4	8'-0"	4	10'-0"	4	14'-0"
a3	#4	13	4'-1"	13	5'-1"	13	6'-1"	13	7'-1"
b1	#4	1	4'-9"	1	4'-9"	1	4'-9"	1	4'-9"
b2	#4	23	6'-1"	29	6'-1"	35	6'-1"	41	6'-1"
x1	#4	8	3'-10"	8	4'-2"	8	4'-6"	8	4'-10"

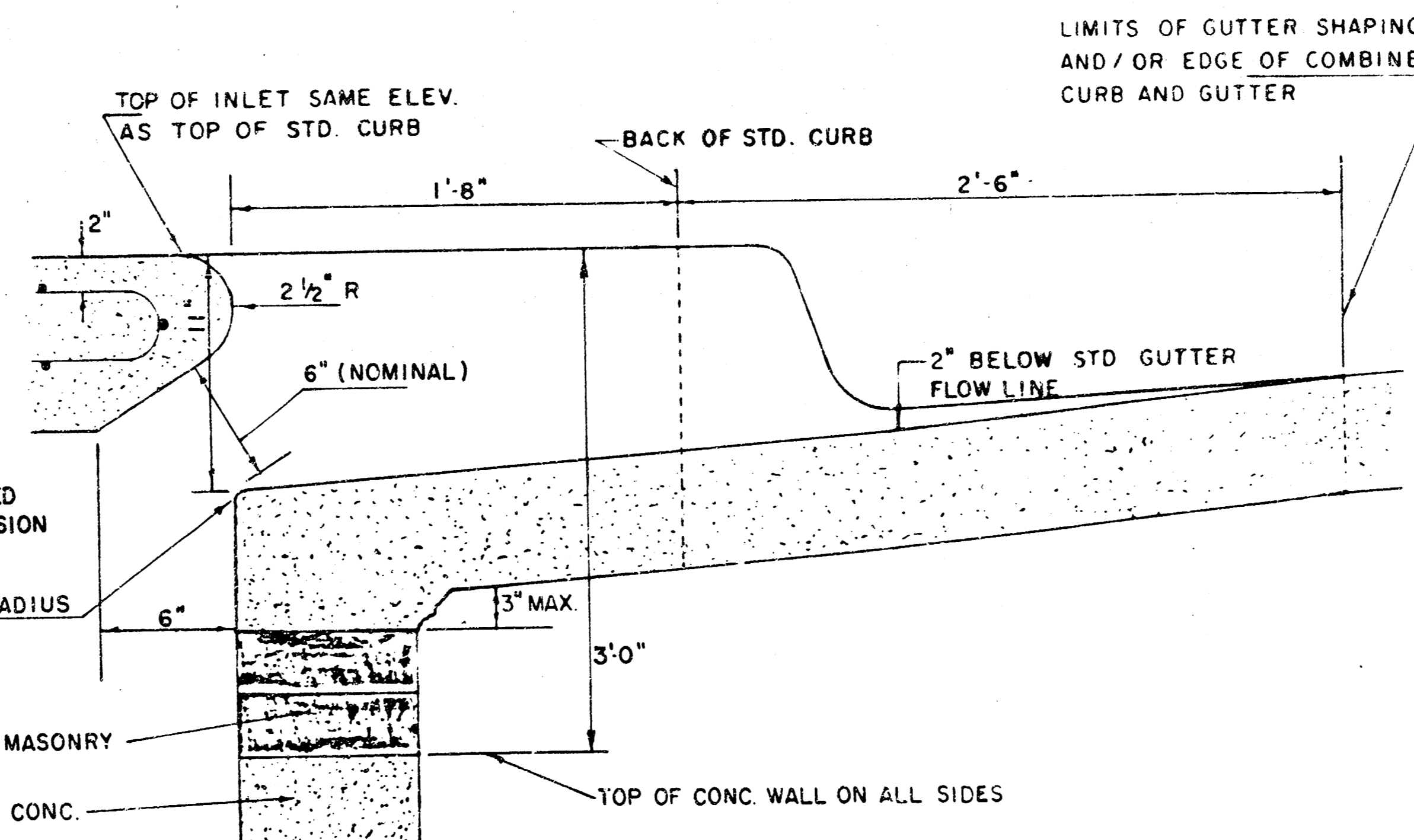
WALL REINFORCING									
Mark	Size	No.	Length	No.	Length	No.	Length	No.	Length
w1	#4	1	6'-1"	1	6'-1"	1	6'-1"	1	6'-1"
w2	#4	1	4'-1"	1	5'-1"	1	6'-1"	1	6'-1"
w3	#4	32	2	35	2	40	2	44	2

STANDARD CURB INLET PRECAST TOPS			
W	PRE-CAST TOP SIZE	PIPE SIZE	CU. YD. CONC.
4'-4"	3'8" x 6'4" x 7 1/2"	21" B SMALLER	0.38 ±
5'-4"	4'8" x 6'4" x 7 1/2"	24" B 30"	0.51 ±
6'-4"	5'8" x 6'4" x 7 1/2"	36" B 42"	0.64 ±
7'-4"	6'8" x 6'4" x 7 1/2"	48" B 54"	0.77 ±
8'-4"	7'8" x 6'4" x 7 1/2"	60" B 66"	0.90 ±

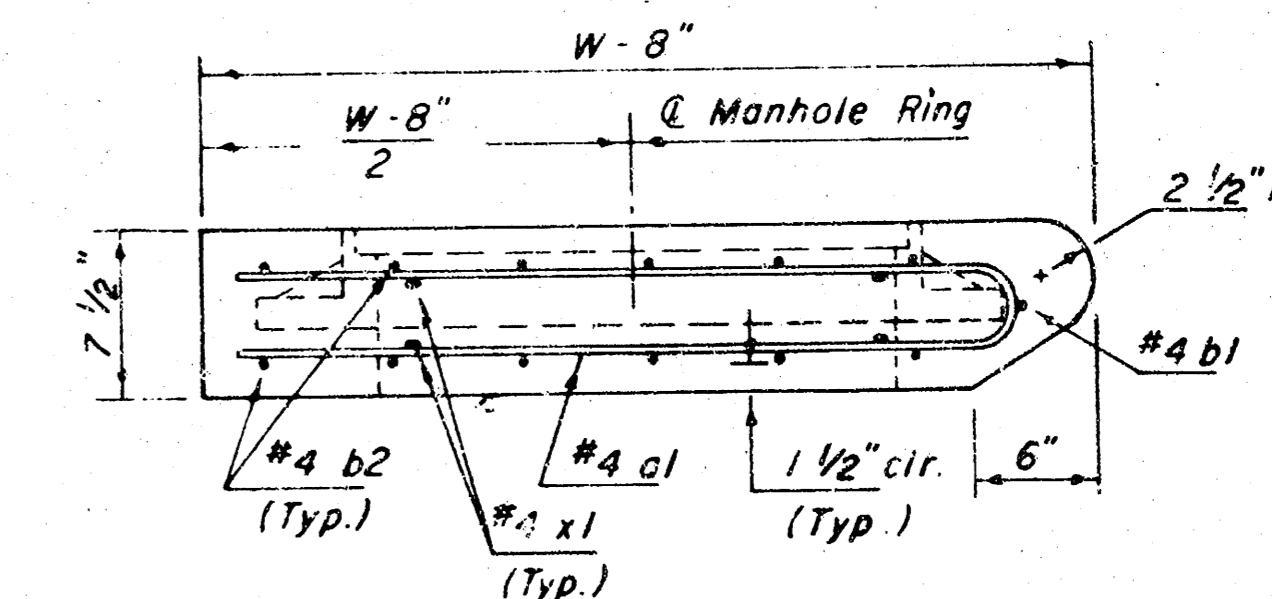
* Field bend or cut Reinforcing as required for clearance.
 ① 4(HI-12"); (HI-12") Round down to nearest 0.5"
 ② HI-3"



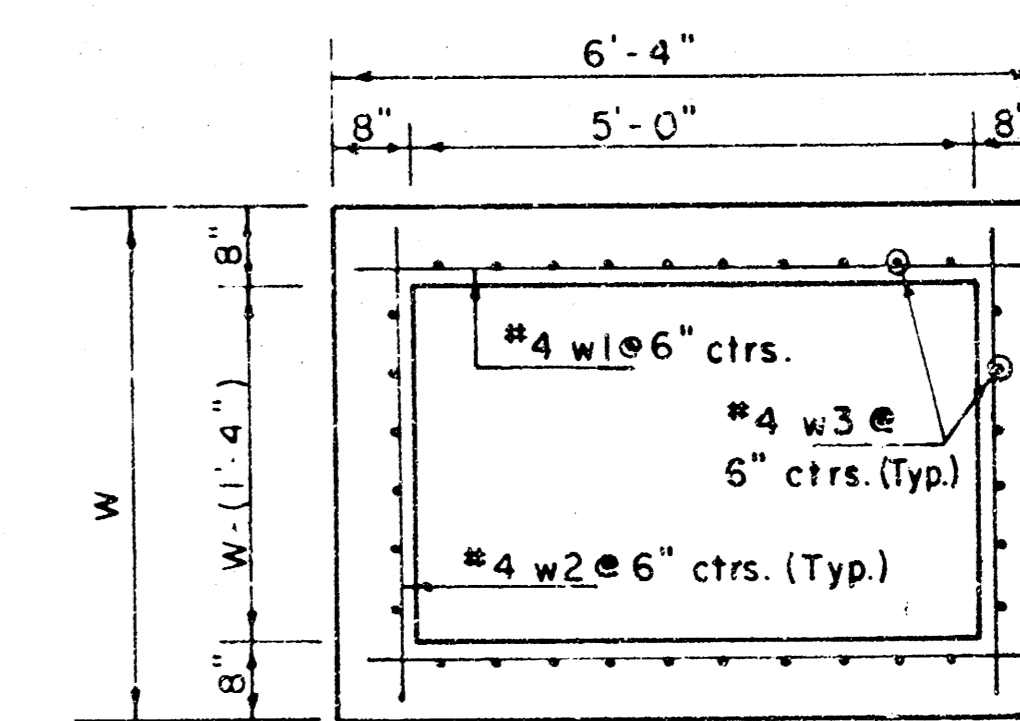
SECTION E-E



SECTION B-B



SECTION C-C



SECTION D-D

REVISED 11-30-1983

REVISED 12-21-1984

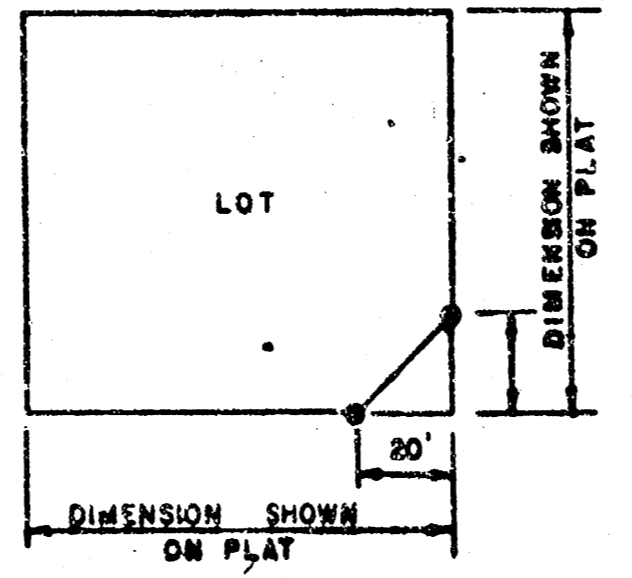
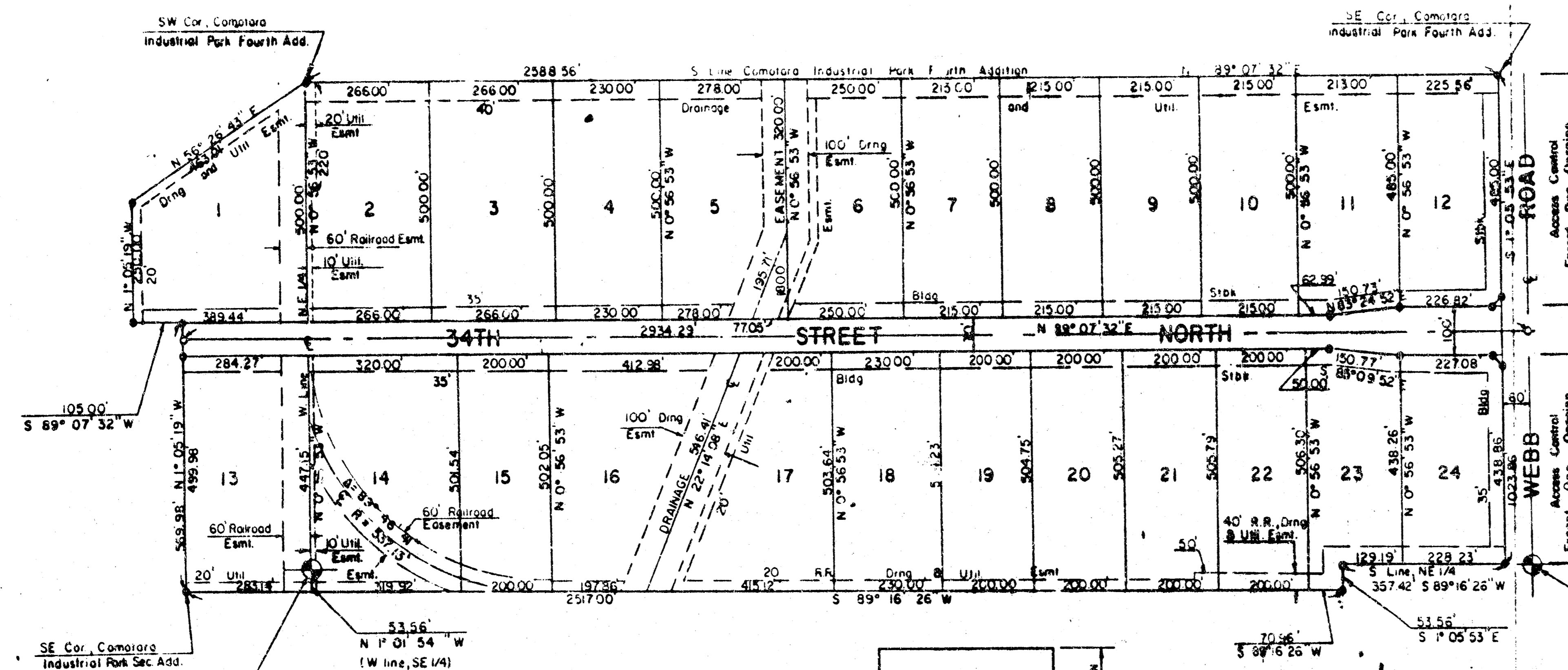
Revised 2-16-1989

DETAIL STANDARD TYPE IA CURB INLET
 CITY OF WICHITA, KANSAS
 INLET OPENING = 6" x 5' 0"

JUNE 1984

FINAL PLAT OF COMOTARA INDUSTRIAL PARK FIFTH ADDITION

IN ADDITION TO WICHITA, SEDGWICK COUNTY, KANSAS



TYPICAL INTERSECTION
RIGHT OF WAY DETAILS

This plat approved and all dedications shown hereon, if any, accepted by the Board of County Commissioners of Sedgewick County, Kansas this 21st day of November, 1978.

[Signature] Chairman
[Signature] Commissioner
[Signature] Commissioner
[Signature] County Clerk

STATE OF KANSAS, COUNTY OF SEDGWICK, ss:
This is to certify that this instrument was filed for record in the Register of Deeds Office at 10:31 AM on the 21st day of DECEMBER, 1978.

[Signature] Register of Deeds
[Signature] Deputy

This plat of "Comotara Industrial Park Fifth Addition" has been submitted to and approved by the Wichita-Sedgewick County Metropolitan Area Planning Commission, Wichita, Kansas.

Dated this 26th day of October, 1978.

Wichita-Sedgewick County Metropolitan Area Planning Commission
[Signature] Chairman
[Signature] Secretary
[Signature] Mayor
[Signature] City Clerk
[Signature] County Clerk

Be it remembered that on this 21st day of November, 1978, before me, a Notary Public in and for said State and County, came the following Wichita Company, a division of Heising Company, lessee of Lots 2 through 3 inclusive within the above described property as hereby consent to the plat of "Comotara Industrial Park Fifth Addition":

Wichita Company, a division of Heising Company
[Signature] Director of Legal Department

STATE OF KANSAS, COUNTY OF SEDGWICK, ss:
Be it remembered on this 21st day of November, 1978, before me, a Notary Public in and for said State and County, came the Notary Public in and for said State and County, E. B. Riechers, Director of Legal Department for the Heising Wichita Company, to me personally known to be the same person who executed the foregoing instrument of writing and duly acknowledged the execution of the same. In testimony whereof, I have hereunto set my hand and affixed my notarial seal the day and year above written.

[Signature] Notary Public
My Appointment Expires: May 24, 1980

Entered on transfer record this 21 day of November, 1978.
[Signature] County Clerk

I, the undersigned, a Land Surveyor in Kansas, do hereby certify that I am a duly licensed and qualified Surveyor and that I have surveyed the plat of "Comotara Industrial Park Fifth Addition" in accordance with the laws of the State of Kansas and the rules and regulations of the Board of Surveyors of the State of Kansas. The survey was made by me or under my direct supervision and I am personally known to be the same person who executed the foregoing instrument of writing and duly acknowledged the execution of the same. In testimony whereof, I have hereunto set my hand and affixed my notarial seal the day and year above written.

STATE OF KANSAS, COUNTY OF SEDGWICK, ss:
I hereby certify that the details of this plat are correct to the best of my knowledge and belief this 22nd day of November, 1978.

[Signature]
Van Doran-Heising-Stallings
260 N. Rock Road, Suite 240
Wichita, Kansas 67206

Know all men by these presents that the undersigned owners of a portion of the land as above set forth in the Land Surveyor's Certificate, have caused the same to be surveyed and platted into lots and a street, the same to be known as "Comotara Industrial Park Fifth Addition" in Wichita, Sedgewick County, Kansas. The street is hereby dedicated to and for the use of the public for the construction and maintenance of public utilities and drainage as indicated on the accompanying plat are hereby granted.

Real Estate Investment
[Signature]
Terrence J. Johnson, Partner

Be it remembered that on this 21st day of November, 1978, before me, a Notary Public in and for said State and County, came the Notary Public in and for said State and County, E. B. Riechers, Director of Legal Department for the Heising Wichita Company, to me personally known to be the same person who executed the foregoing instrument of writing and duly acknowledged the execution of the same. In testimony whereof, I have hereunto set my hand and affixed my notarial seal the day and year above written.

[Signature]
My Appointment Expires: May 24, 1980

STATE OF KANSAS, COUNTY OF SEDGWICK, ss:
Be it remembered on this 21st day of November, 1978, before me, a Notary Public in and for said State and County, came the Notary Public in and for said State and County, E. B. Riechers, Director of Legal Department for the Heising Wichita Company, to me personally known to be the same person who executed the foregoing instrument of writing and duly acknowledged the execution of the same. In testimony whereof, I have hereunto set my hand and affixed my notarial seal the day and year above written.

[Signature]
My Appointment Expires: May 24, 1980

