

STORMWATER SEWER IMPROVEMENTS TO SERVE PETsMART Towne West Square

Project Number
753 PPS (607861)

CITY OF WICHITA, KANSAS
Michael E. Lindebak, P. E., City Engineer

GENERAL NOTES

- Contractor will be required to provide notice to utility companies a minimum of twenty-four (24) hours prior to any excavation, as follows:

Kansas One-Call	687-2470
-----------------	----------

The Contractor must notify the following in case of an emergency:

Cablevision	262-4270
or	263-2061
K.P.L. Gas Service Company	383-8650
Kansas Gas & Electric Company	383-8600
Arkla Gas Company	942-8350
Southwestern Bell Telephone Company	1-571-2611
City of Wichita Water Department	268-4908
City of Wichita Sewer Department	268-4071
- Exist. utilities and their locations, as shown on the plans, represent the best information obtainable for design. Location information has been obtained from the various utility companies and is either from company record drawings or company-provided field locations. The Contractor will be required to work around existing utilities which do not conflict with proposed construction.
- The Contractor to verify utility locations prior to construction of this project.
- Utility service and installation shall be coordinated with the respective utility owners. Contacts are:

KG&E Gas	Steve Orth	261-6867
K.G. & E.	Miles Capps	261-6434
Wichita Water	Chuck Steven	268-4555
	Joe Botinelly	268-4908
Southwestern Bell	Jim Tobin	268-2759
- All areas disturbed by construction shall be seeded with rye Rebel II Fescure grass at a rate of 350 lbs./acre immediately following construction in that area.
- Traffic affected by the construction of this project shall be handled in accordance with the latest edition of the Manual on Uniform Traffic Control Devices.

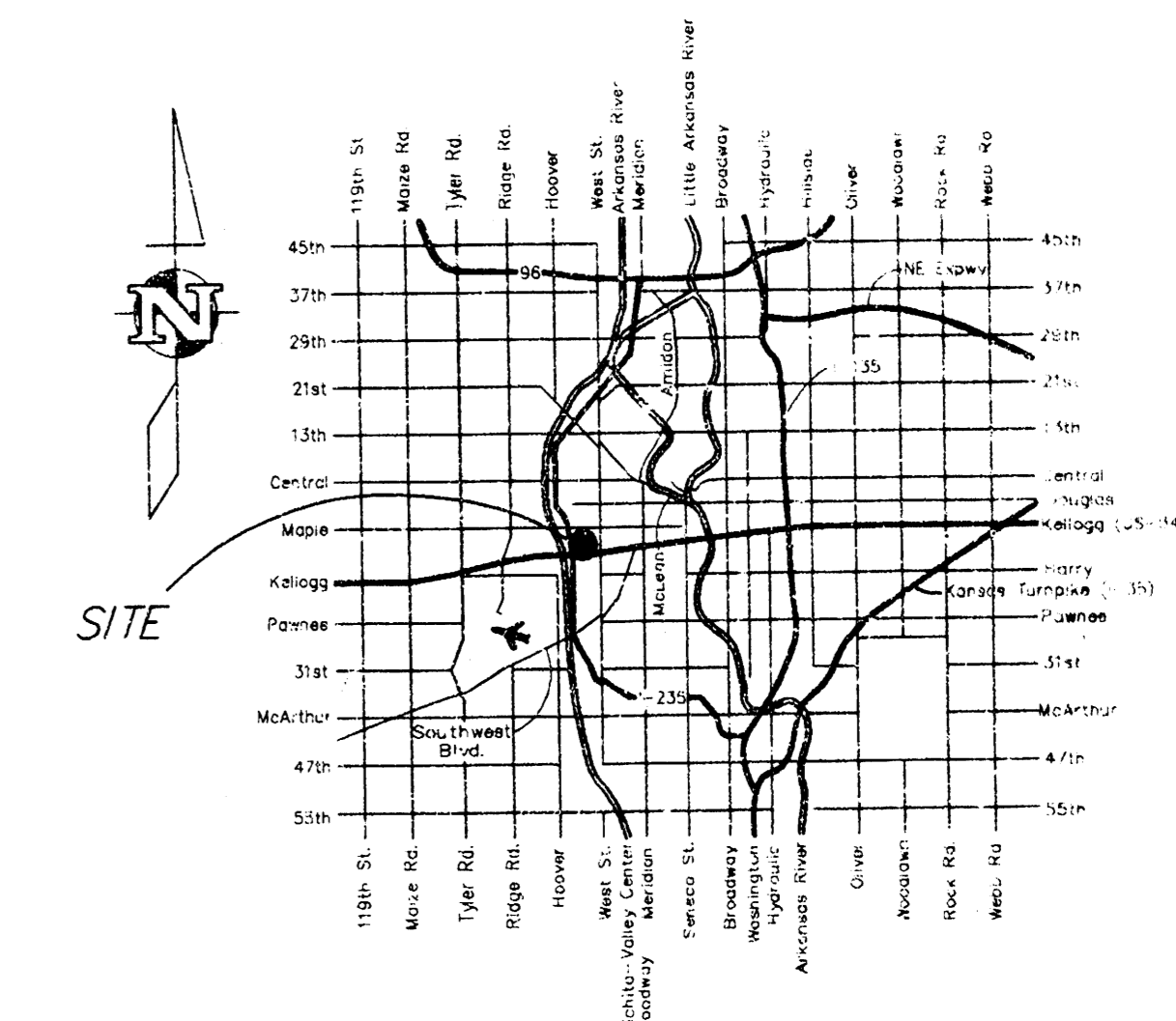
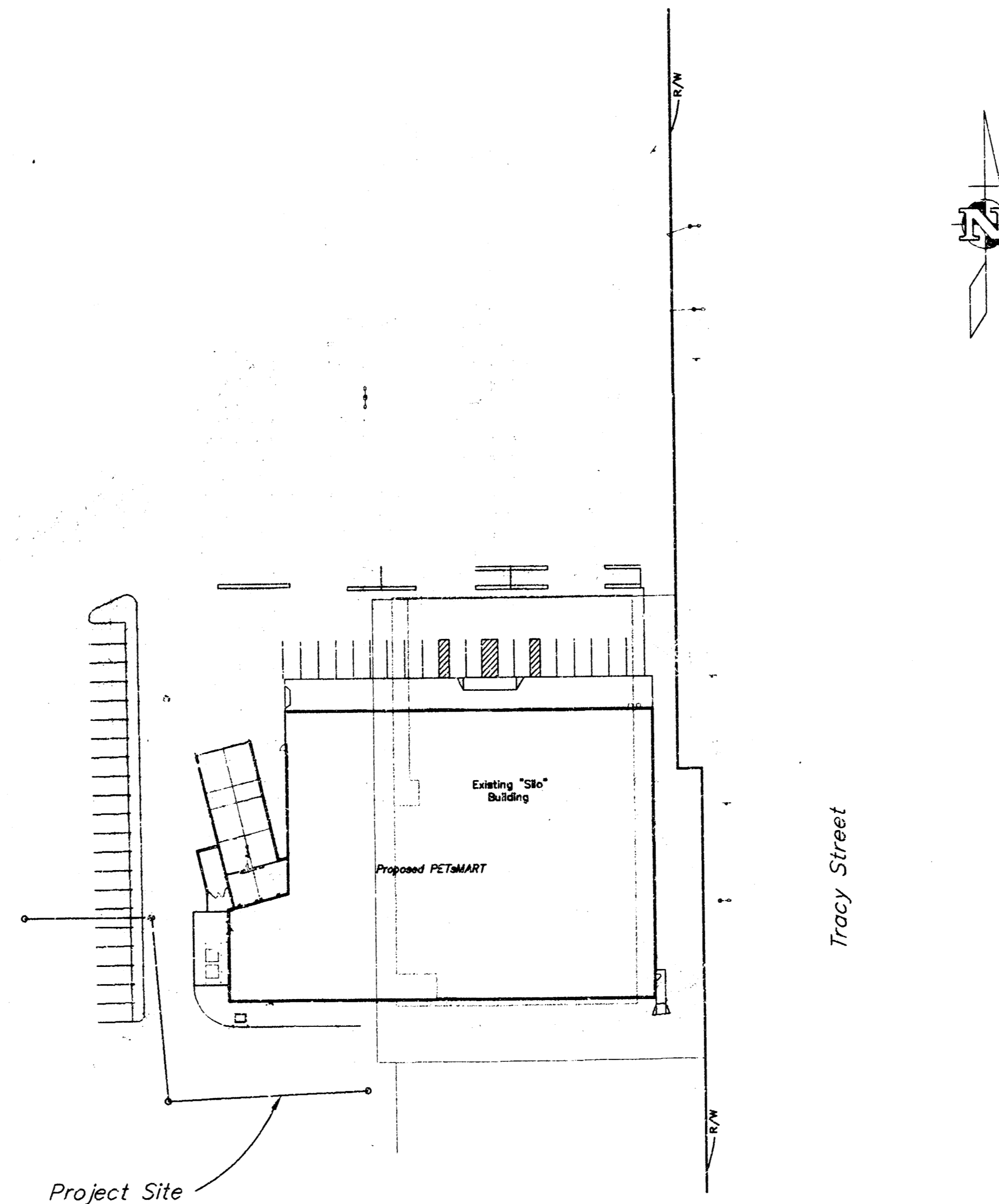
BENCHMARK:

"□" Top of Curb @ NE end of SW return SE of Blg. @ Tracy & Drive S. of Blg. Elev. = 110.66 (Assumed)

INDEX

- Cover
- Plan and Profile

BOOKED
10-13-01
MCS
D-523



LOCATION MAP

APPROVED AS NOTED BY CITY ENGINEER OF WICHITA

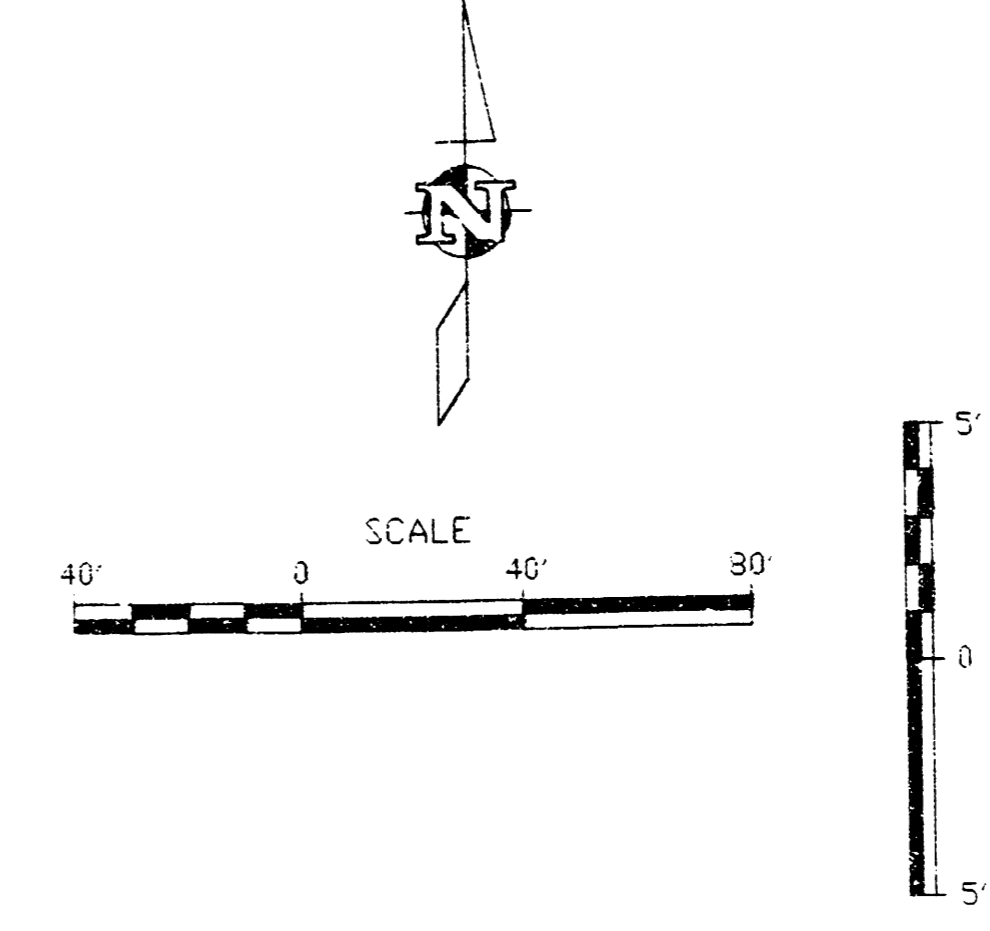
STORM SEWERS VRH 10/24/97

VRH
10/24/97

Inspection and testing for this project are to be provided by a Licensed Consulting Engineering Firm under contract with the Owner/Developer. Said inspection is to be in accordance with the City of Wichita standard construction engineering practices and certified by a Licensed Professional Engineer. No work shall be performed in dedicated easements or public right-of-way by the Contractor without such inspection nor shall work be commenced without written authorization by the City Engineer. All construction and materials shall comply with the City of Wichita Specifications and Standards (on file and available in the City Engineer's Office).

AUSTIN
ENGINEERING SERVICES
P.A.
254 S. Lewis, Suite 210 Wichita, KS 67211
316/262-1221 Fax 316/262-6773

REVISED "AS BUILT" 1-7-98 TEB



GENERAL NOTES:

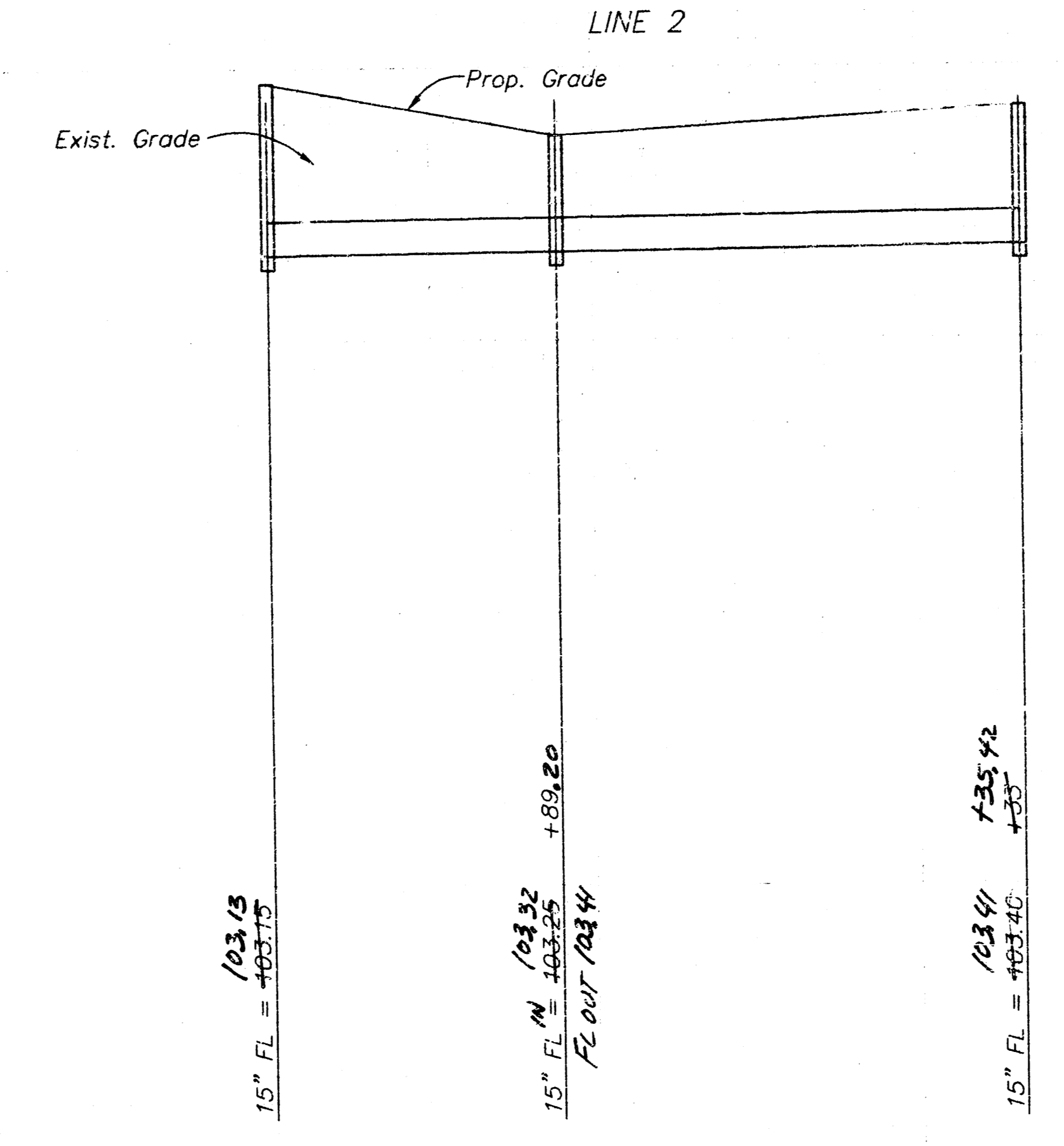
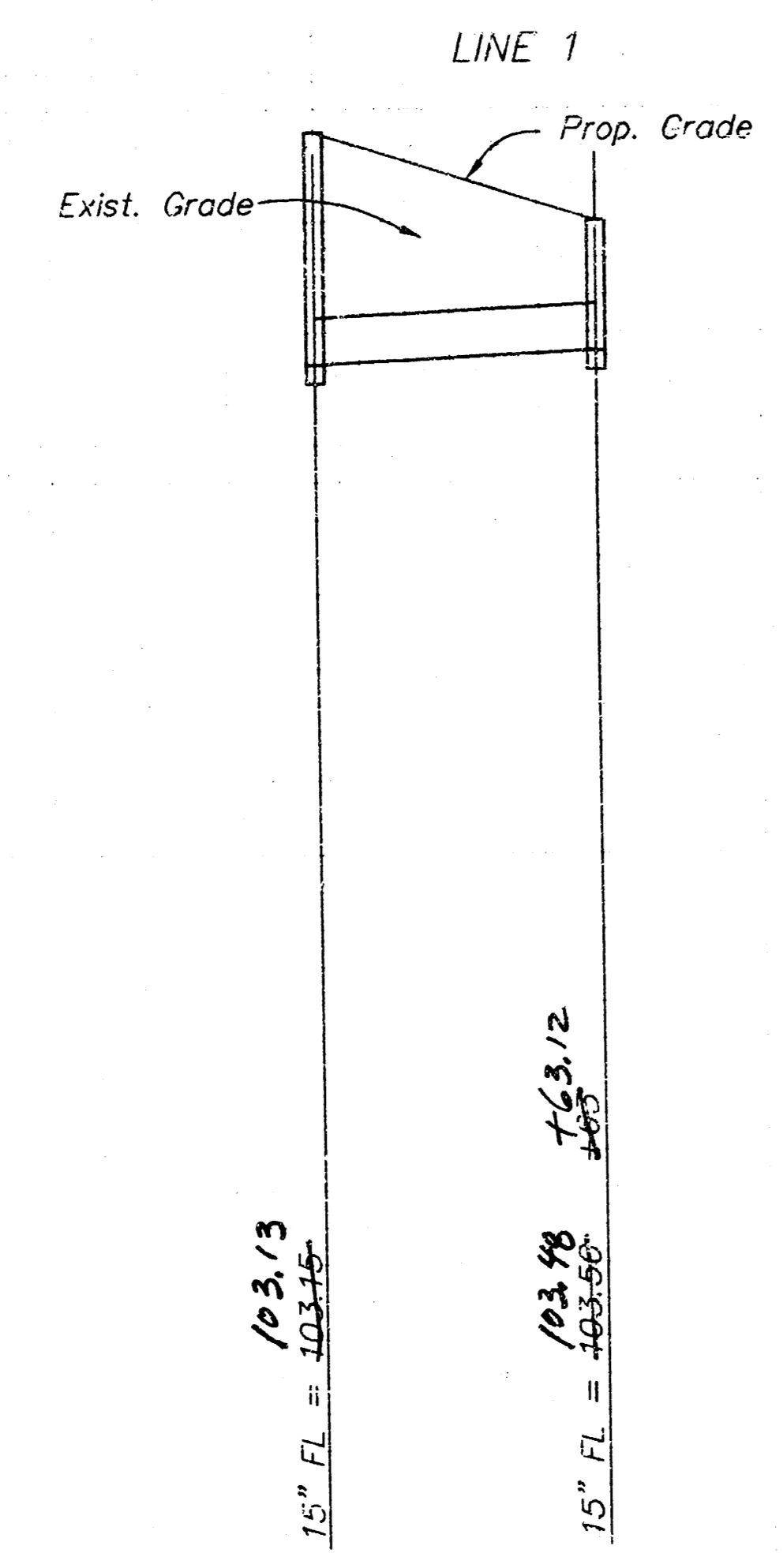
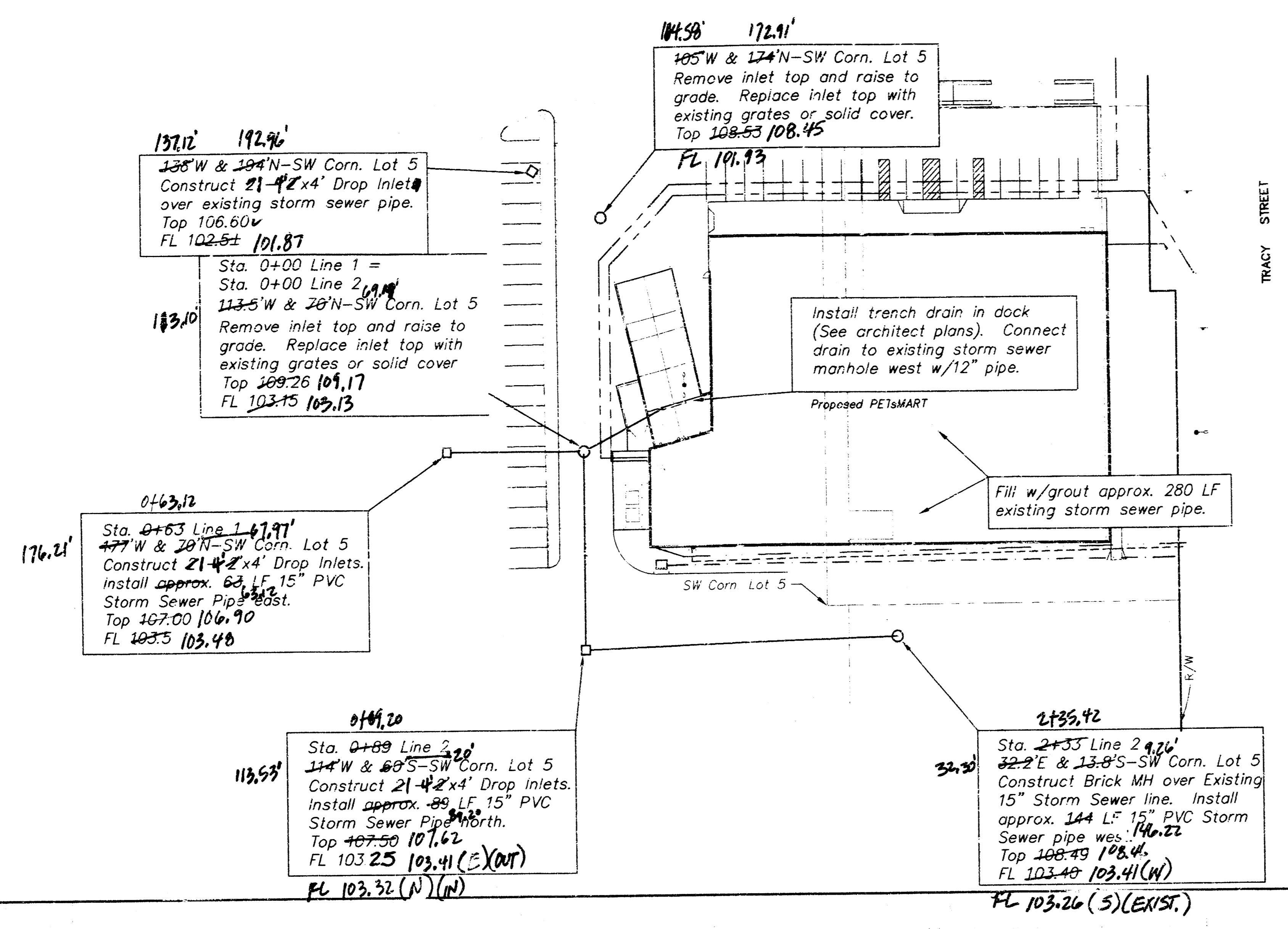
- Utility service line locations are approximate as shown. Utility connections and locations are to be coordinated by general contractor with architect, utility company, and/or engineer.
- See sheet C5 for additional notes.

LEGEND

- Fire Line
- Electric
- Gas
- Telephone

BENCHMARK:

"B" Top of Curb @ NE end of SW return SE of Bldg. @ Tracy & Drive S. of Bldg. Elev. = 110.66 (Assumed)



REVISED "AS BUILT" 1-7-98 TEB

DESIGN km	DRAWN km	FILE storm	DATE 10/97	SCALE 1"=40'	PROJECT NUMBER 753 PPS (607281)	AM NO 37057	SHEET 2 OF 2
					PETS MART STORM SEWER PLAN TOWNE WEST SQUARE		

89 TO 40 21