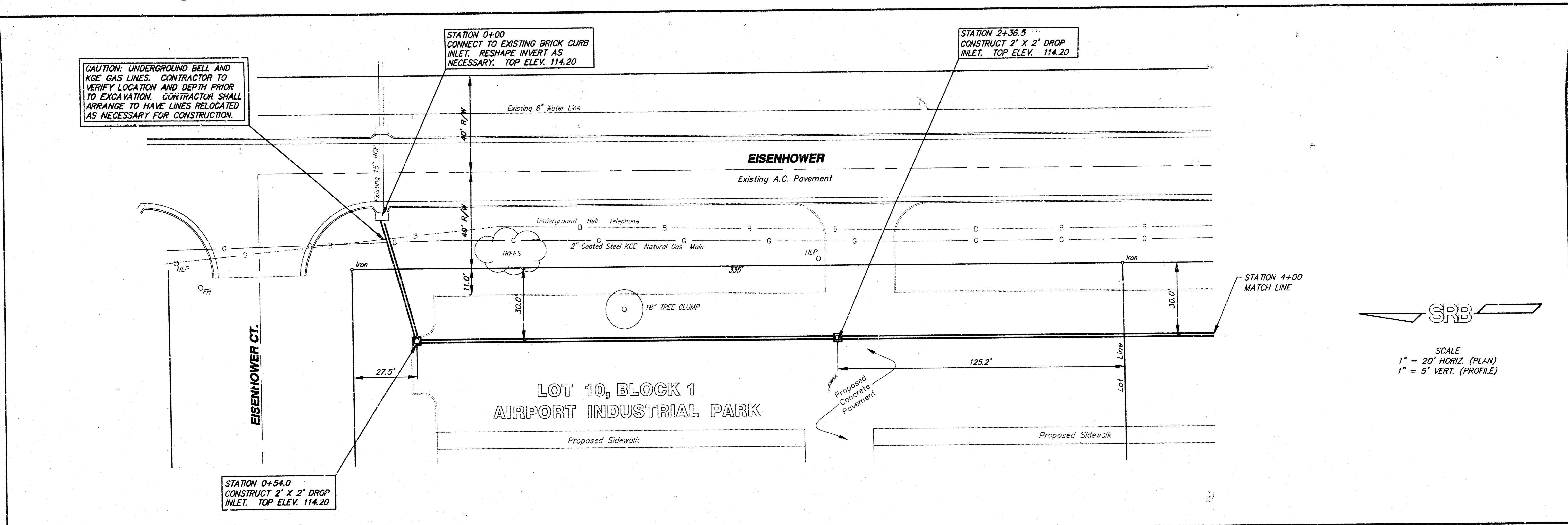


CAUTION: UNDERGROUND BELL AND KGE GAS LINES. CONTRACTOR TO VERIFY LOCATION AND DEPTH PRIOR TO EXCAVATION. CONTRACTOR SHALL ARRANGE TO HAVE LINES RELOCATED AS NECESSARY FOR CONSTRUCTION.

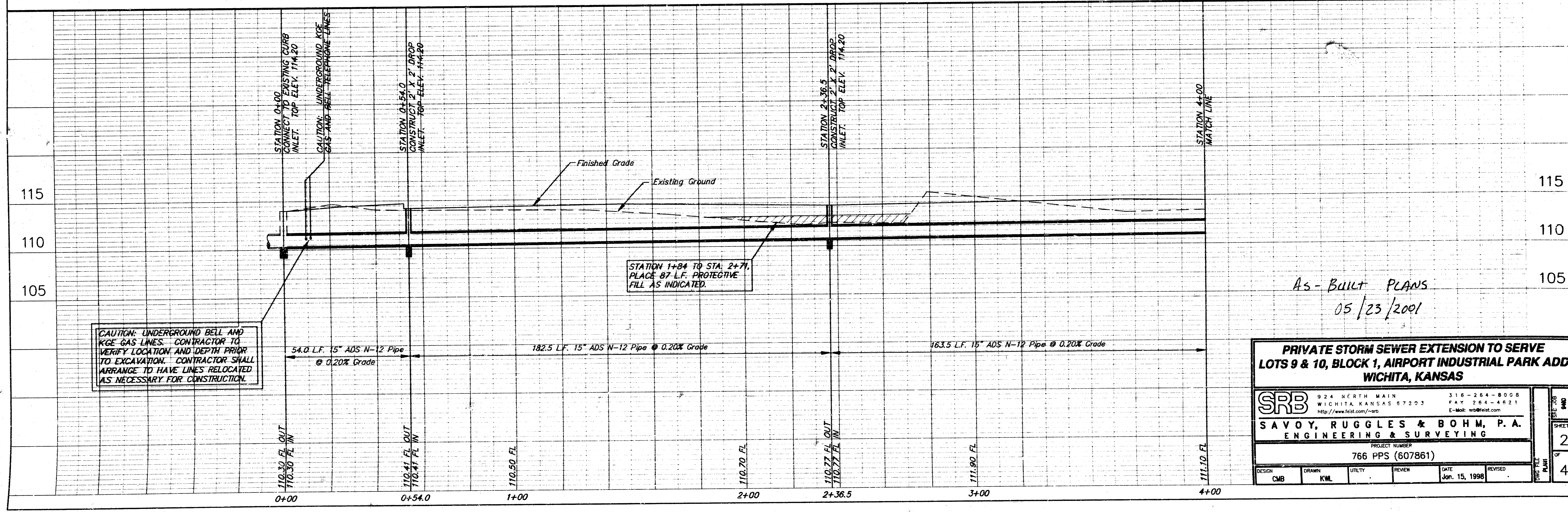
STATION 0+00
CONNECT TO EXISTING BRICK CURB
INLET. RESHAPE INVERT AS
NECESSARY. TOP ELEV. 114.20

STATION 2+36.5
CONSTRUCT 2' X 2' DROP
INLET. TOP ELEV. 114.20

STATION 0+54.0
CONSTRUCT 2' X 2' DROP
INLET. TOP ELEV. 114.20



SRB
SCALE
1" = 20' HORIZ. (PLAN)
1" = 5' VERT. (PROFILE)



CAUTION: UNDERGROUND BELL AND KGE GAS LINES. CONTRACTOR TO VERIFY LOCATION AND DEPTH PRIOR TO EXCAVATION. CONTRACTOR SHALL ARRANGE TO HAVE LINES RELOCATED AS NECESSARY FOR CONSTRUCTION.

STATION 1+84 TO STA. 2+71,
PLACE 87 L.F. PROTECTIVE
FILL AS INDICATED.

As-Built Plans
05/23/2001

PRIVATE STORM SEWER EXTENSION TO SERVE LOTS 9 & 10, BLOCK 1, AIRPORT INDUSTRIAL PARK ADD. WICHITA, KANSAS

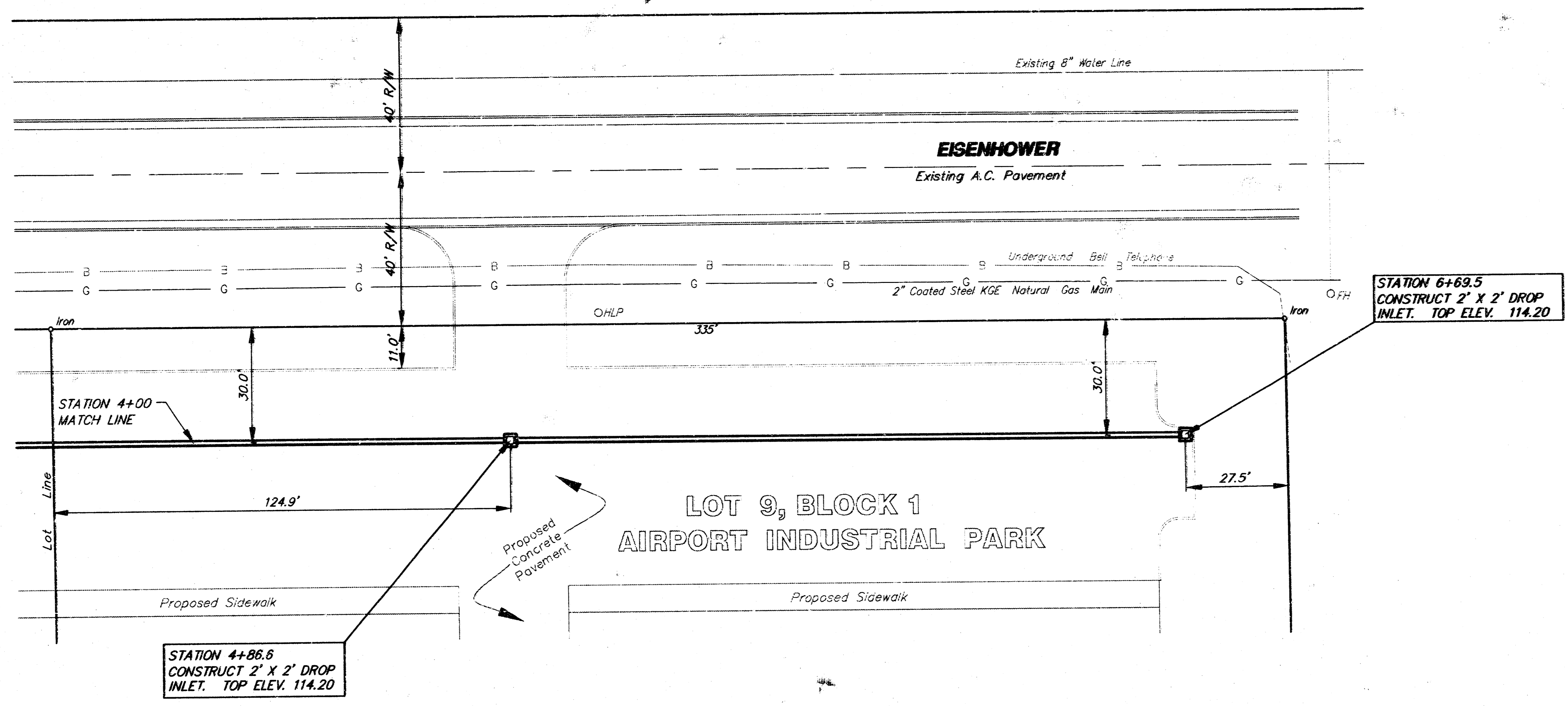
SRB 924 NORTH MAIN WICHITA, KANSAS 67203
316-264-8008 FAX 264-4621
http://www.felst.com/~srb E-Mail: wrb@felst.com

SAVOY, RUGGLES & BOHM, P.A.
ENGINEERING & SURVEYING

PROJECT NUMBER
766 PPS (607861)

DESIGN	DRAWN	UTILITY	REVIEW	DATE	REVISED
CMB	KWL			Jan. 15, 1998	

2 OF 4



DRAINAGE CALCULATIONS

$C_s = 0.76$
 $C_{rso} = 0.84$
 $I_s = 4.56 \text{ in/hr}$
 $I_{so} = 7.37 \text{ in/hr}$
 $Q = c * I * A$

INLET @ 6+69.5
 AREA - 0.24 acres
 $Q_s = 0.24(0.76)4.56 = 0.8 \text{ cfs}$
 $Q_{100} = 0.24(0.84)7.37 = 1.5 \text{ cfs}$

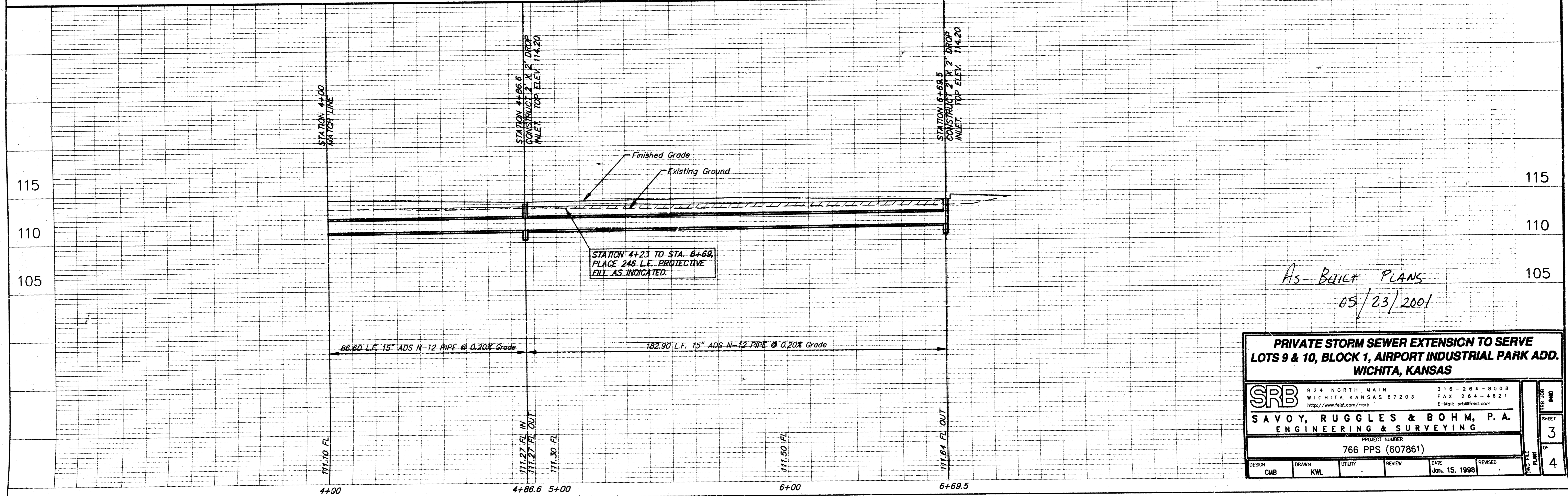
INLET @ 4+86.6
 AREA - 1.26 acres
 $Q_s = 1.26(0.76)4.56 = 4.4 \text{ cfs}$
 $Q_{100} = 1.26(0.84)7.37 = 7.8 \text{ cfs}$

INLET @ 2+36.5
 AREA - 1.51 acres
 $Q_s = 1.51(0.76)4.56 = 5.2 \text{ cfs}$
 $Q_{100} = 1.51(0.84)7.37 = 9.3 \text{ cfs}$

INLET @ 0+54.0
 AREA - 0.24 acres
 $Q_s = 0.24(0.76)4.56 = 0.8 \text{ cfs}$
 $Q_{100} = 0.24(0.84)7.37 = 1.5 \text{ cfs}$

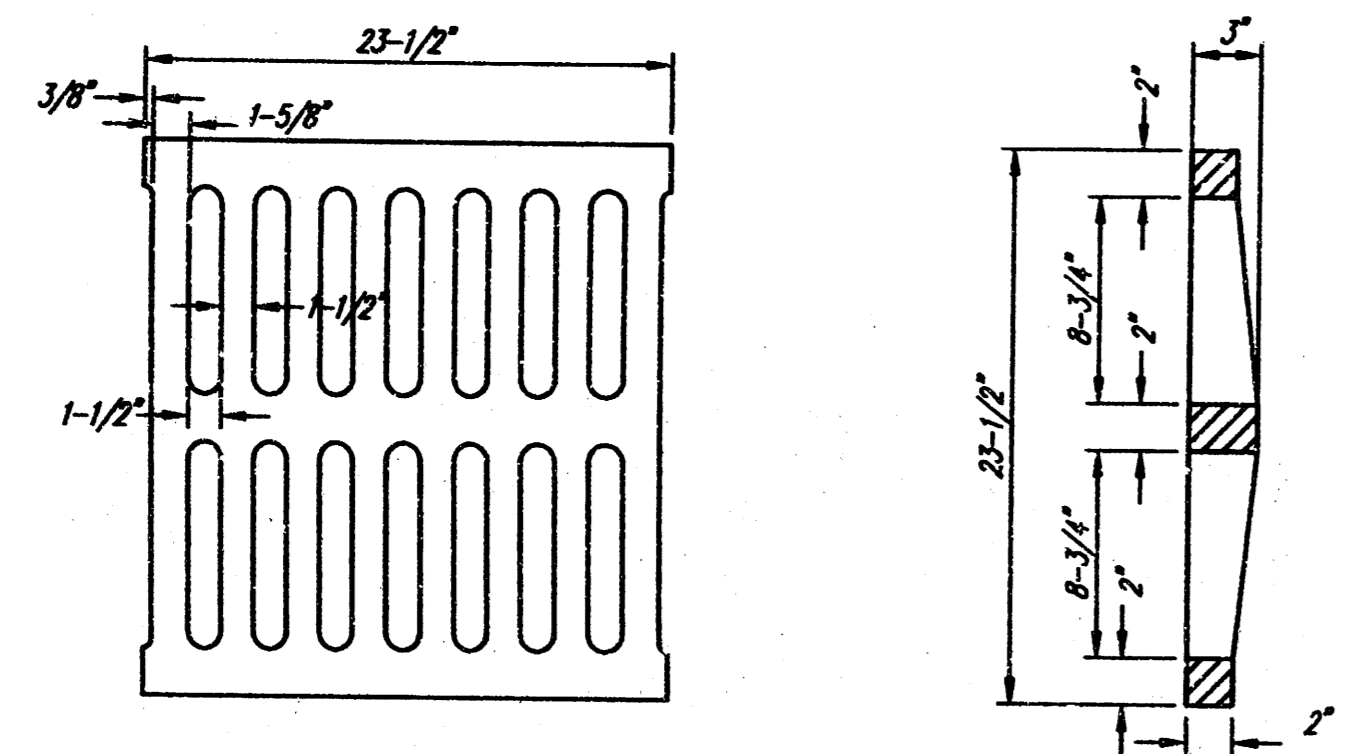
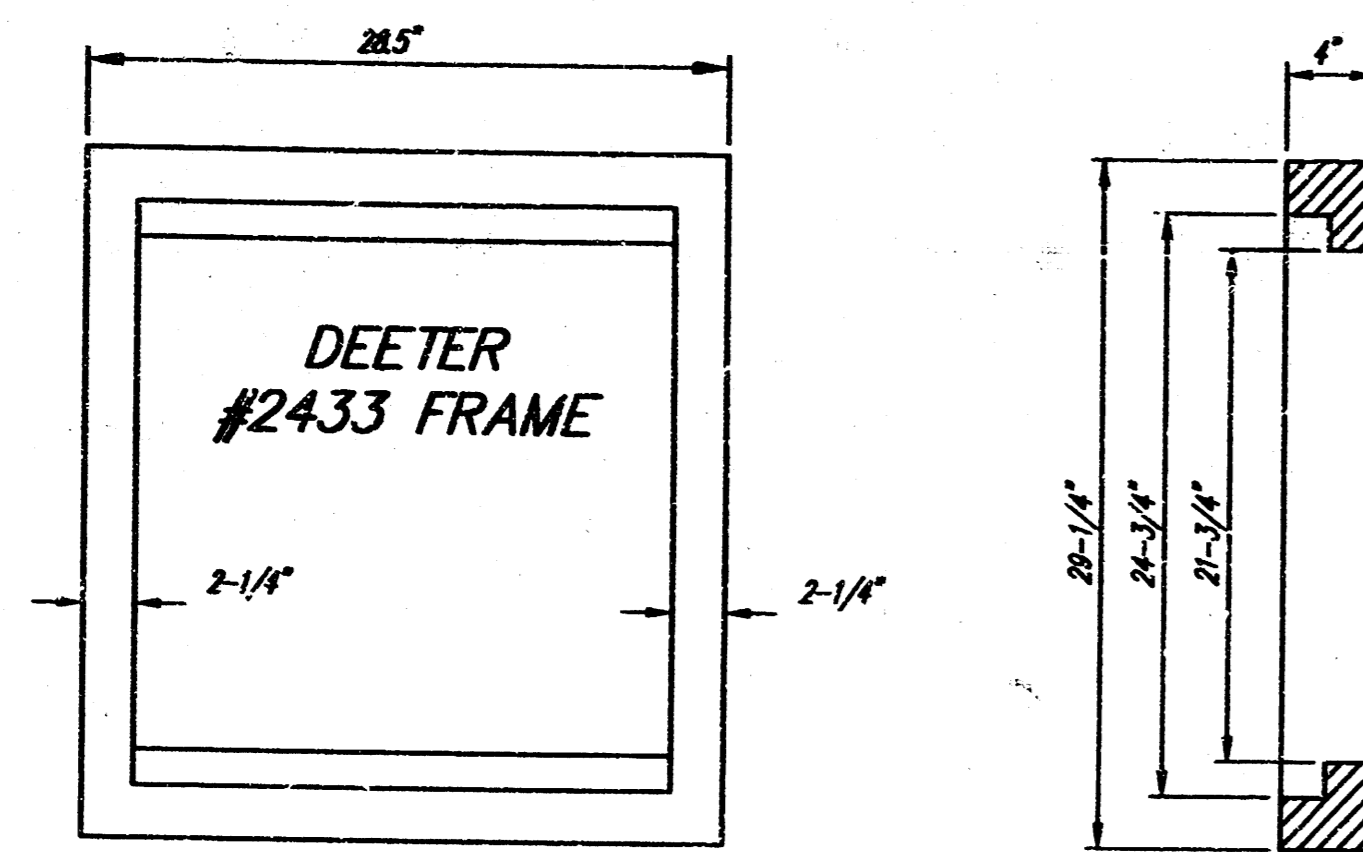


SCALE
 1" = 20' HORIZ. (PLAN)
 1" = 5' VERT. (PROFILE)



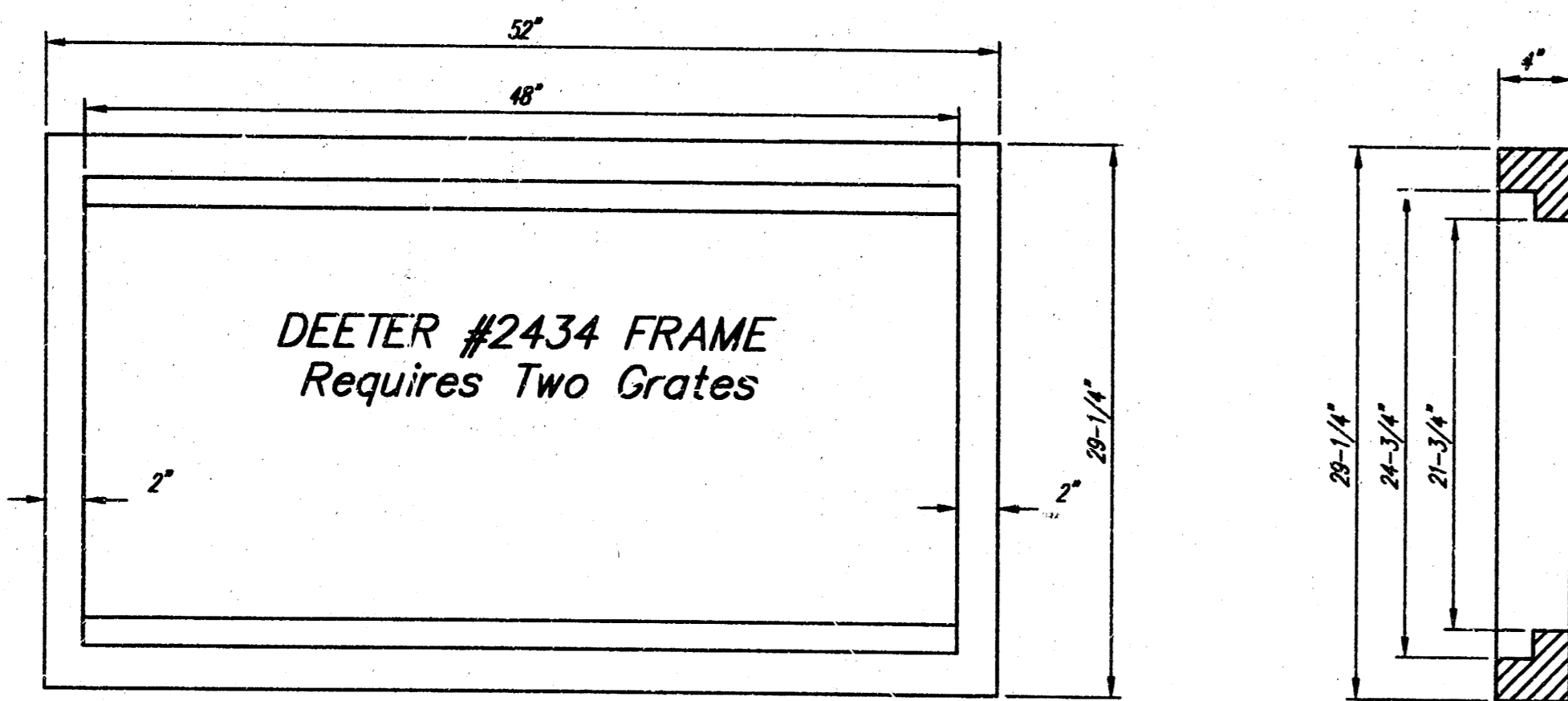
As-Built Plans
 05/23/2001

PRIVATE STORM SEWER EXTENSION TO SERVE LOTS 9 & 10, BLOCK 1, AIRPORT INDUSTRIAL PARK ADD. WICHITA, KANSAS					
SRB		924 NORTH MAIN WICHITA, KANSAS 67203 http://www.test.com/~srb		316-264-8008 FAX 264-4621 E-Mail: srb@test.com	
SAVOY, RUGGLES & BOHM, P. A. ENGINEERING & SURVEYING					
PROJECT NUMBER 766 PPS (607861)					
DESIGN CMB	DRAWN KWL	UTILITY	REVIEW	DATE Jan. 15, 1998	REVISED
					SHEET 3 OF 4

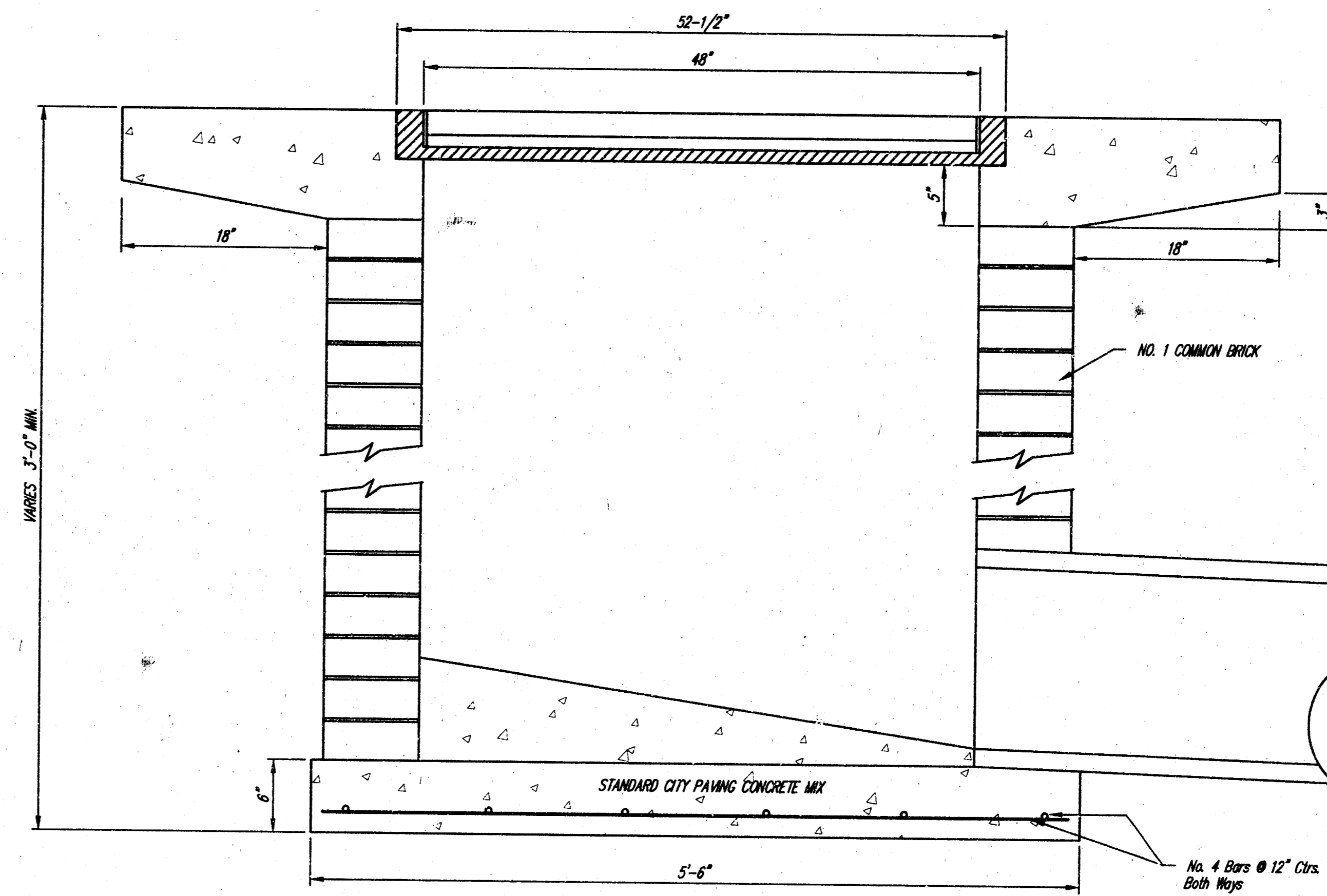
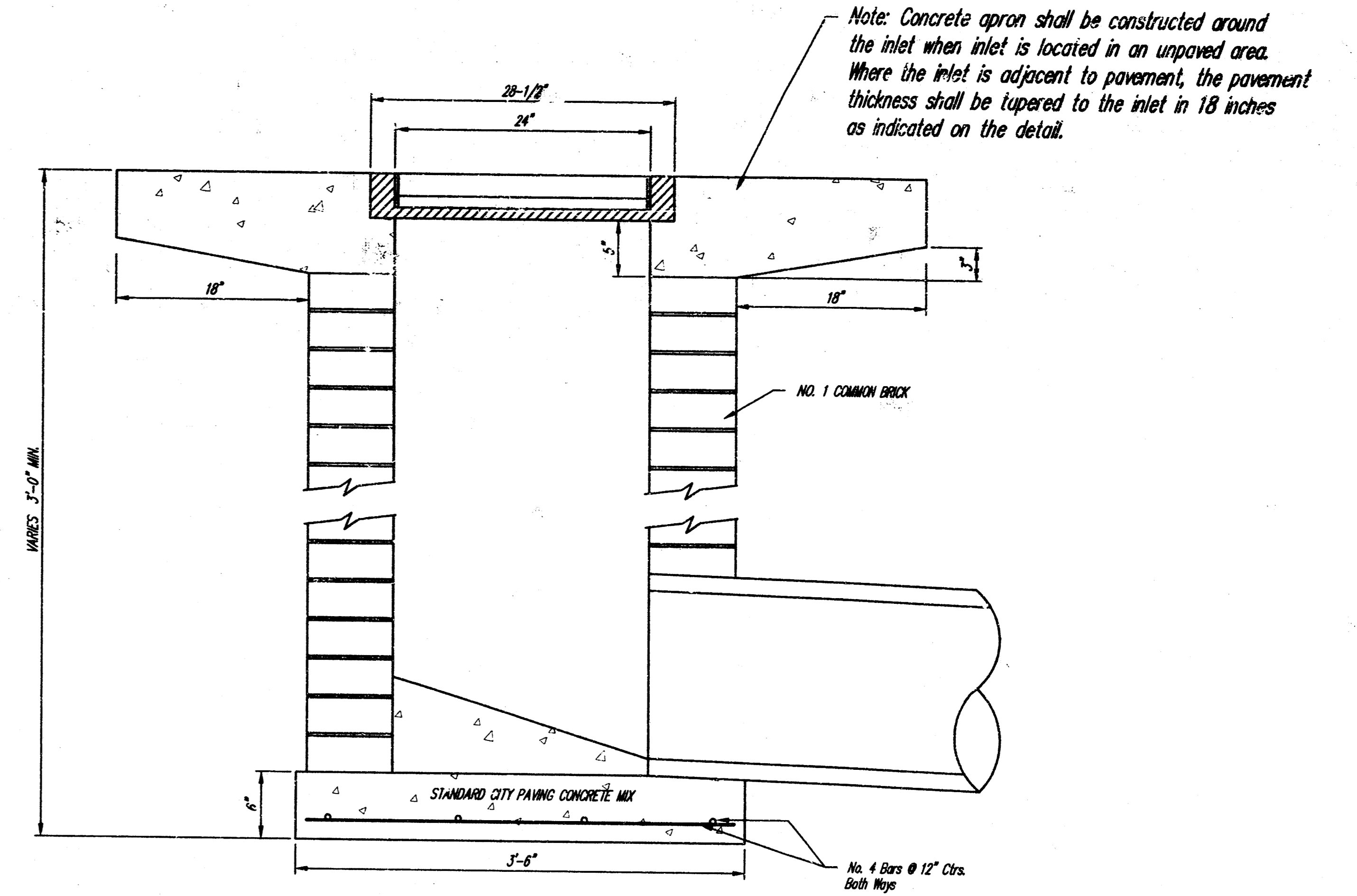
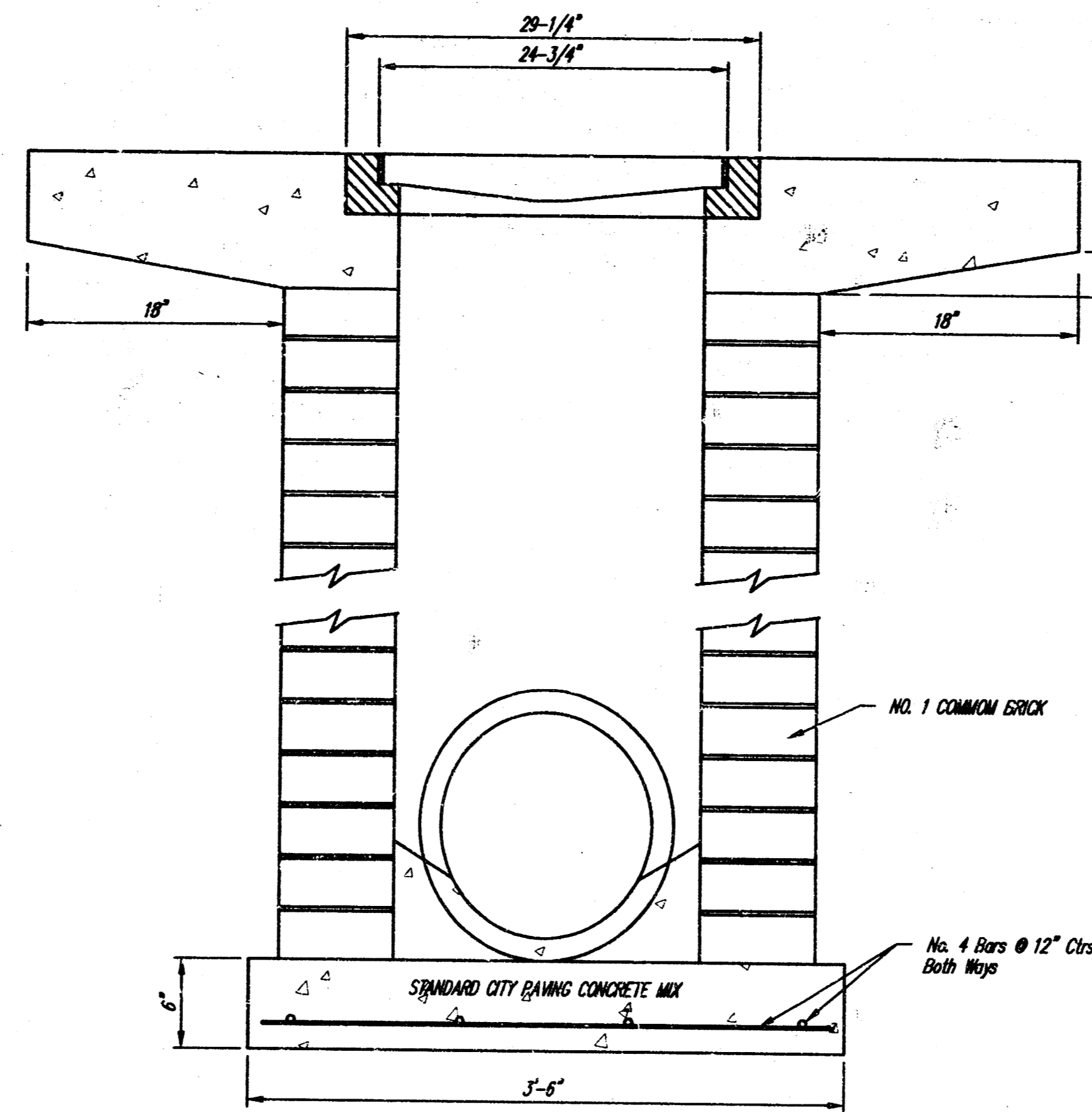


NOTE: Grates shall be imprinted on the top surface with "CITY OF WICHITA" using letters at least 1" in height. Other marking methods may be approved by the engineer.

24" x 24" Frame and Grate Detail



Double 24" x 24" Frame Detail



<p>THE CITY OF WICHITA</p> <p>CITY ENGINEER'S OFFICE CITY HALL - SEVENTH FLOOR 456 NORTH MAIN STREET WICHITA, KANSAS 67202 (316) 268-4800 (316) 268-4114 FAX</p>	DROP INLET 2'x2' / 2'x4'	
	M. E. LINDEBAK P.E. - CITY ENGINEER	
	PROJECT NUMBER 766 PPS	INDEX CODE 607861
	DATE MAR 96	SHEET 4 OF 4