

STORM WATER SEWER IMPROVEMENTS
TO SERVE

Messiah Baptist Church

Private Project Number
779 PPS (607861)

CITY OF WICHITA, KANSAS

Michael E. Lindebak, P.E. City Engineer
March, 1998

GENERAL NOTES:

1. Contractor will be required to provide notice to utility companies a minimum of twenty-four (24) hours prior to any excavation, as follows:

Kansas One-Call 687-2470

The Contractor must notify the following in case of an emergency:

Cablevision 262-0661
or
K.P. L. Gas Service Company 263-2061
Kansas Gas & Electric Company 264-1141
Southwestern Bell Telephone Company 1-800-344-7233
City of Wichita Water Department 268-4908
City of Wichita Sewer Maintenance 268-4071

2. Underground utility service lines and overhead utility pole lines are to be adjusted as necessary by others prior to construction unless the plans specifically call for their adjustment by the Contractor or unless the plans specifically identify a utility to be adjusted by its owner during construction. Existing utilities and their location, as shown on the plans, represent the best information obtainable for design. The Contractor will be required to work around existing utilities within the right-of-way which do not conflict with proposed construction.

3. All areas disturbed by construction operations shall be seeded with rye grass at a rate of 300 lbs/acre immediately following construction in that area. Ground shall be prepared per City of Wichita specifications prior to seeding.

4. Trees and shrubs in public right-of-way which are in direct conflict with proposed new construction shall be removed by the Contractor with the Engineer's approval. Trees and shrubs which are not in direct conflict with proposed new construction shall be saved and protected from damage.

5. Rubble from the removal of miscellaneous structures and excess excavation which is to be wasted shall be disposed of on sites to be provided by the Contractor. These sites shall be approved by the engineer as to suitability, appearance and site location. Locations that, in the opinion of the Engineer, will leave an unsightly appearance will not be approved.

6. It will be the Contractor's responsibility to field check the project area to determine the extent of Site Clearing and Restoration to be performed.

7. Contractor shall not start work on the project until the project inspector is assigned to the project and is present on the site. Any work done without inspection will be required to be uncovered for inspection.

BENCHMARK:

GREENWICH AND 21st ST. NORTH CITY OF WICHITA
BENCHMARK - DISC 41' SOUTH AND 58' WEST OF
IRON CTR LINE BOTH 17.0' SW OF ASPHALT, 14.2'
EAST OF FACE P.P. 17.0' WEST OF FACE P.P.
ELEVATION = 1,361.38 (MSL)

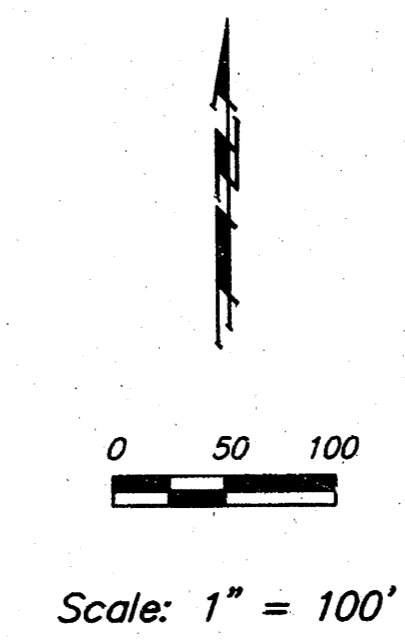
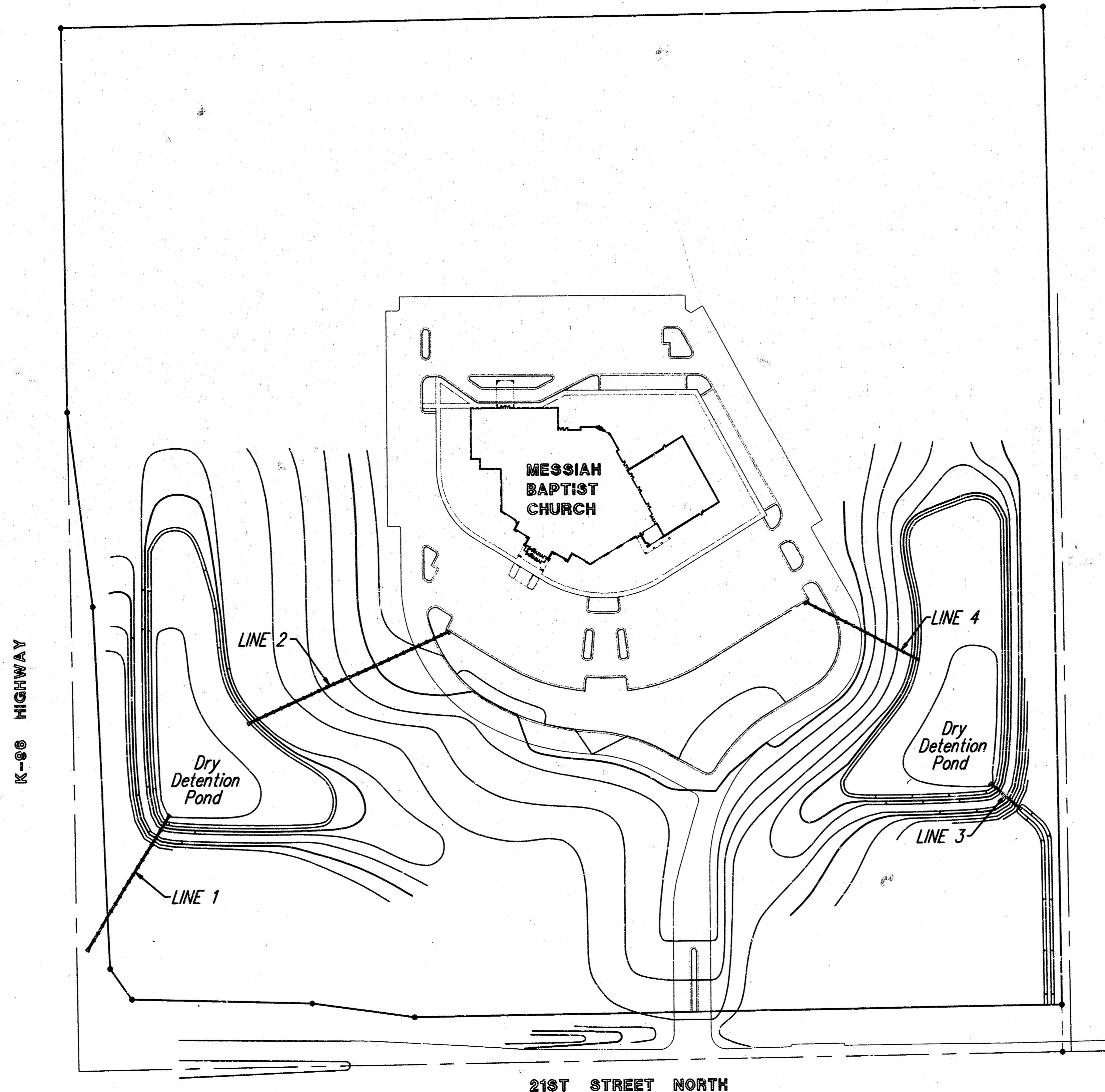
INDEX:

1. Title Sheet
- 2-3. Site Grading Plans
4. Line 1 Plan/Profile
5. Line 2 Plan/Profile
6. Line 3 & Line 4 Plan/Profile
7. Type-1 Curb Inlet Detail
8. Ring & Cover Detail
9. Copy of Messiah Baptist Church 4th Addition Plat

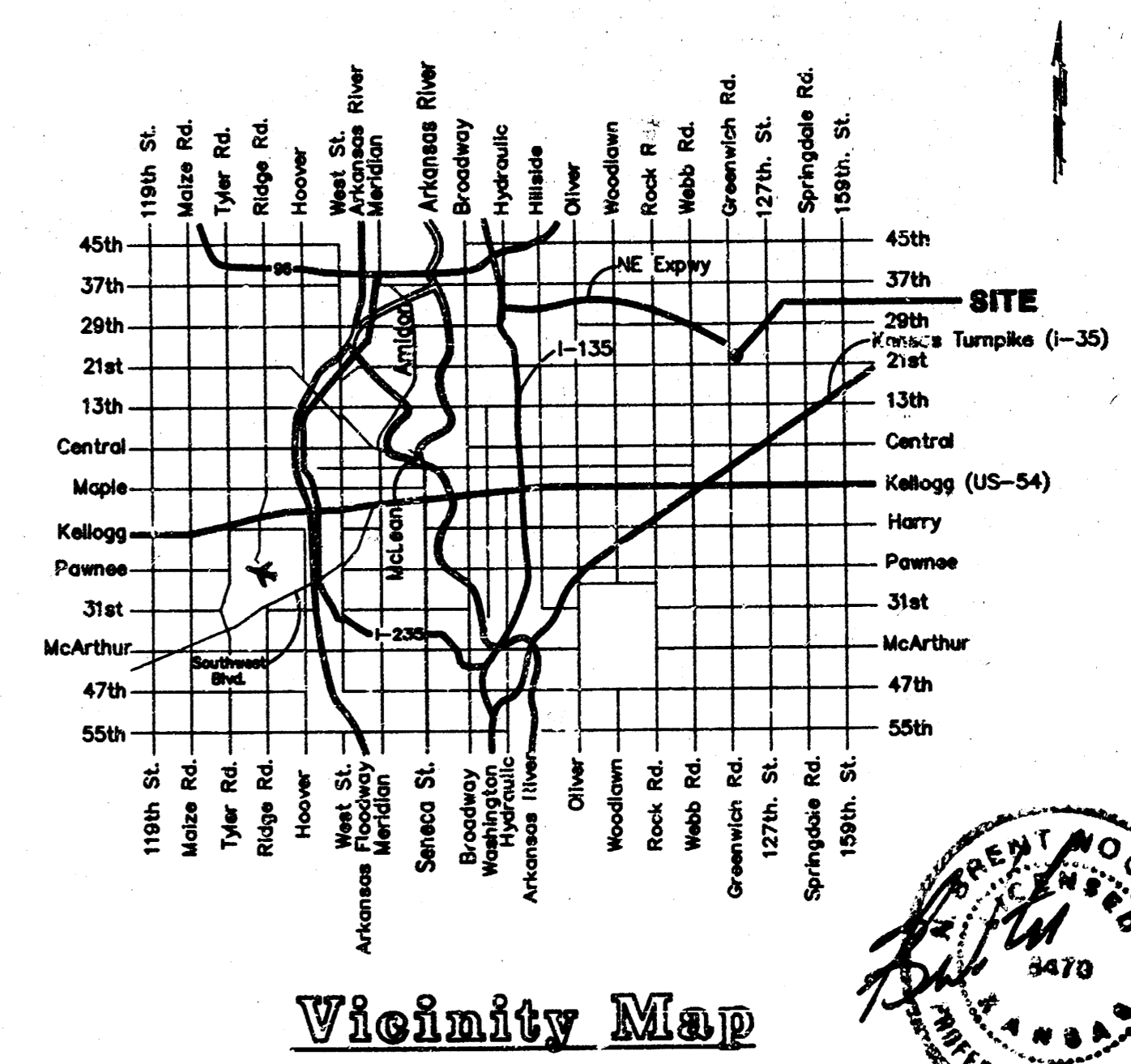
APPROVED AS NOTED
BY CITY ENGINEER OF WICHITA
Storm Sewer VRH 3/17/98

NOTE TO CONTRACTORS

Inspection and testing for this project is to be provided by a Licensed Consulting Engineering Firm under contract with the Owner/Developer. Said inspection to be in accordance with the City of Wichita standard construction engineering practices and certified by a Licensed Professional Engineer. No work shall be performed in dedicated easements or public right-of-way by the Contractor without such inspection nor shall any work be commenced without written authorization by the City Engineer. All Construction and Materials shall comply with the City of Wichita Specifications and Standards (on file and available in the City Engineer's Office).



BOOKED
8-24-99
MCS
D-431



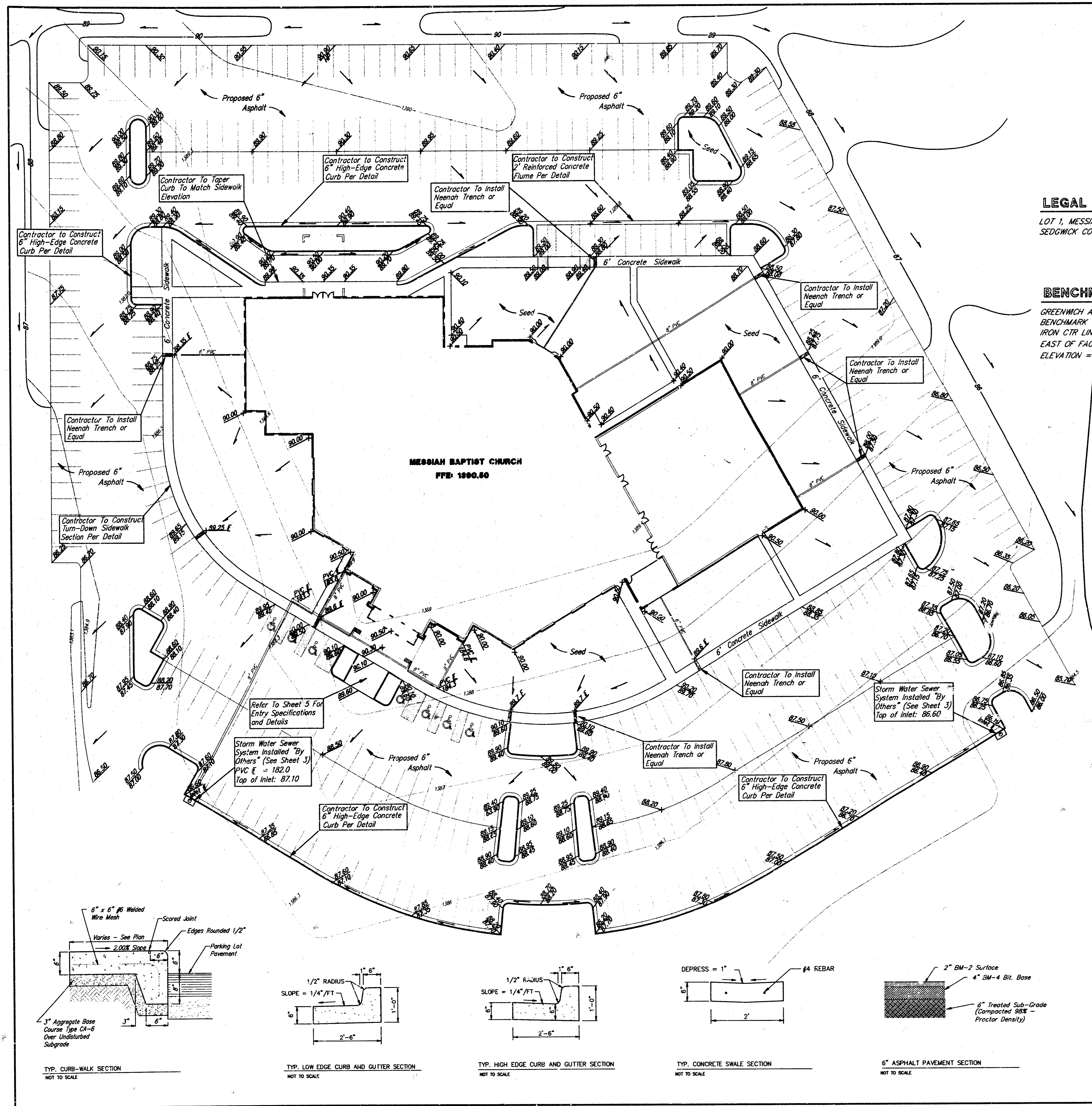
Vicinity Map

PROJECT INSPECTED BY BAUGHMAN ASSBULT 5/98 BAUGHMAN CO.-BY 5/17/98

BAUGHMAN COMPANY P. A.
ENGINEERING & SURVEYING
316/262-7271 • 315 ELLIS • WICHITA, KANSAS 67211

11/1/98
BOOKED

BOOKED



LEGAL DESCRIPTION:

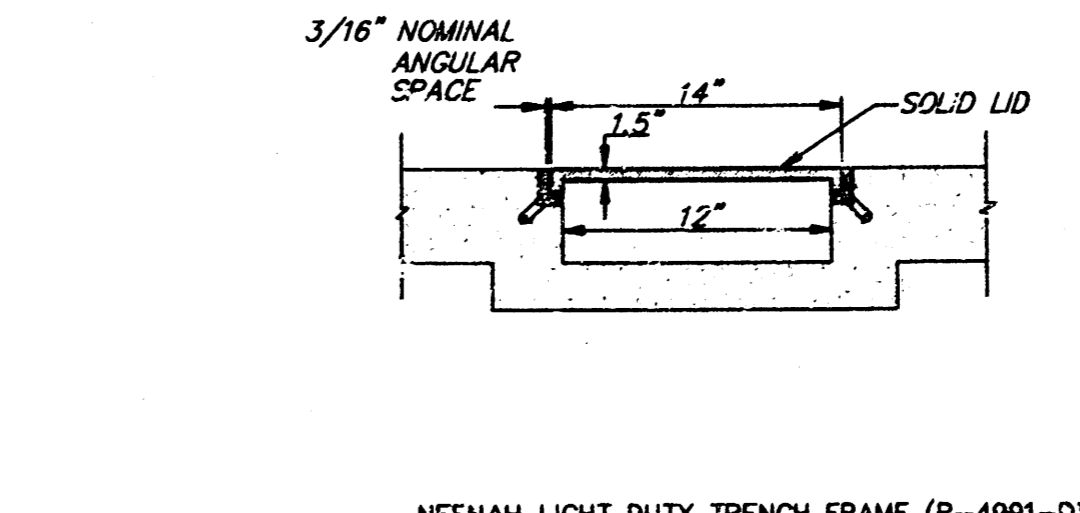
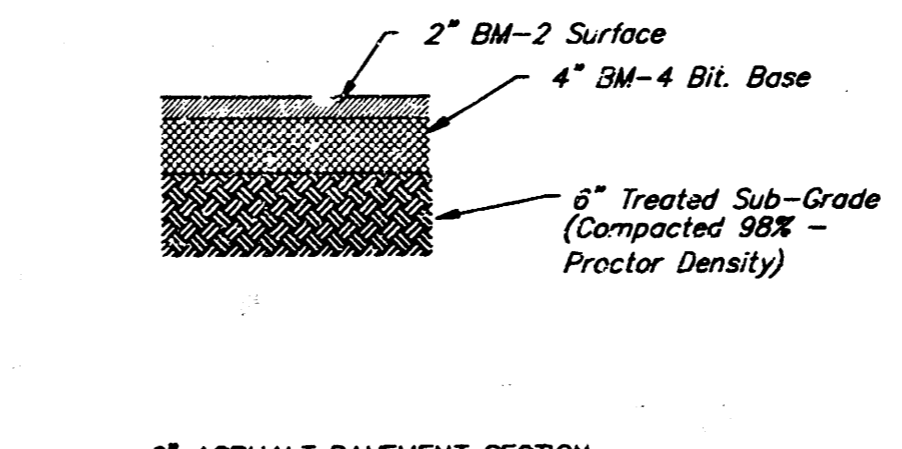
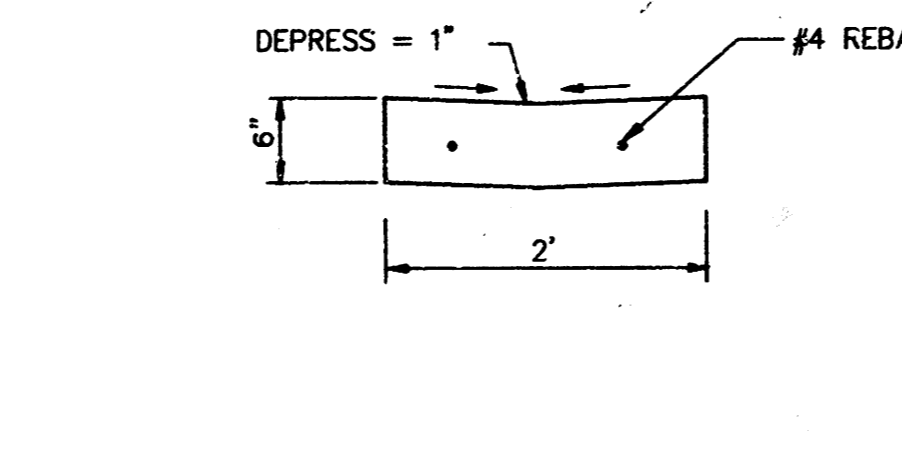
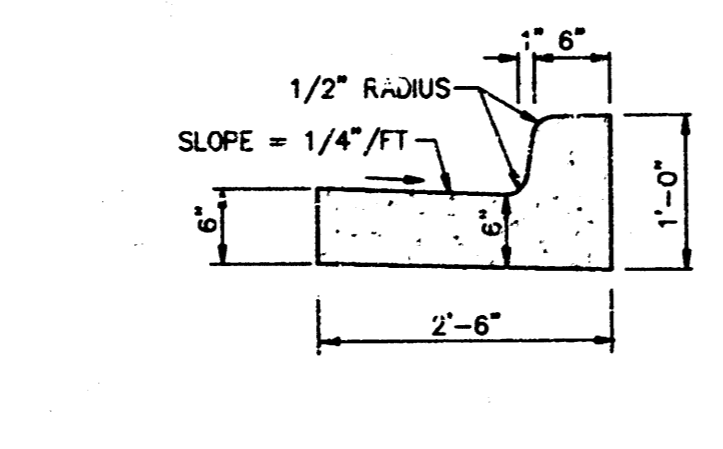
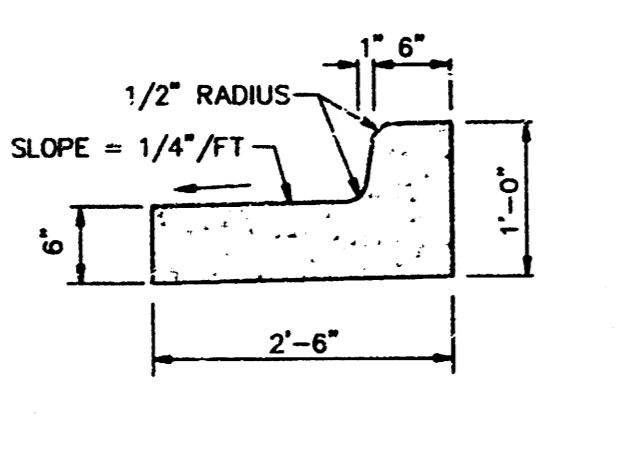
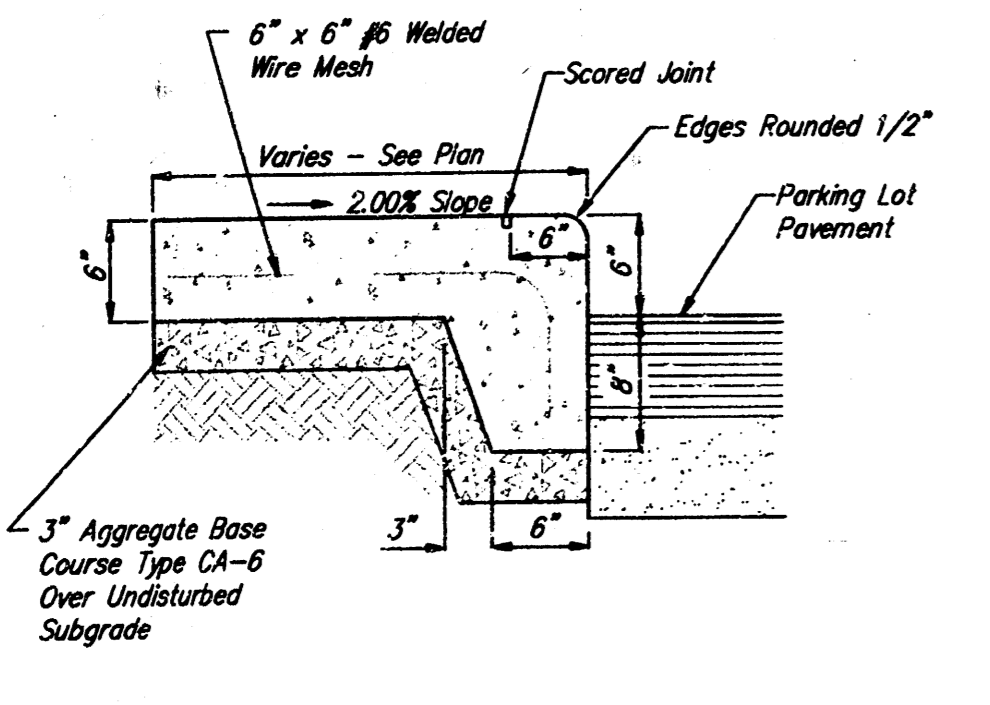
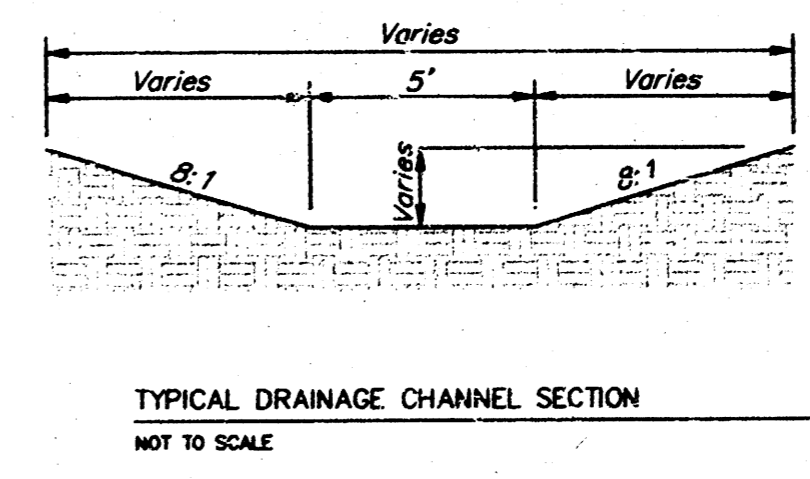
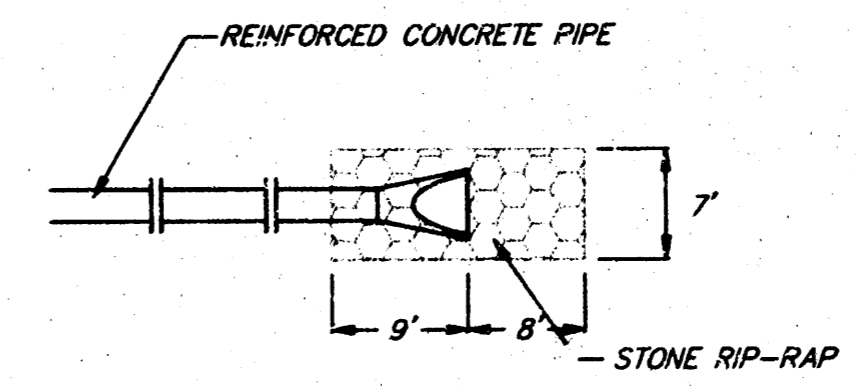
LOT 1, MESSIAH BAPTIST CHURCH 4TH ADDITION,
SEDCWICK COUNTY, KANSAS

BENCHMARK:

GREENWICH AND 21st ST. NORTH CITY OF WICHITA
BENCHMARK - DISC 41' SOUTH AND 58' WEST OF
IRON CTR LINE BOTH. 17.0' SW OF ASPHALT, 14.2'
EAST OF FACE P.P. 17.0' WEST OF FACE P.P.
ELEVATION = 1361.39 (MSL)

GRADING NOTES:

- Contractor will be required to provide notice to utility companies a minimum of twenty-four (24) hours prior to any excavation, as follows:
Kansas One-Call 687-2470
The Contractor must notify the following in case of an emergency:
Cablevision 262-4270
or K.P.L. Gas Service Company 263-2061
Kansas Gas & Electric Company 383-8650
Southwestern Bell Telephone Company 1-571-2611
- Exist. utilities and their locations, as shown on the plans, represent the best information obtainable for design. Location information has been obtained from the various utility companies and is either from company record drawings or company-provided field locations. The Contractor will be required to work around existing utilities which do not conflict with proposed construction.
- Traffic affected by the construction on this project shall be handled in accordance with the latest edition of the Manual on Uniform Traffic Control Devices.
- The Contractor to verify utility locations prior to construction of this project.
- All disturbed areas shall be seeded with Rebel II fescue at the rate of 340 lbs. per acre. Fertilizer (13-13-13) shall be applied at the rate of 100 lbs. per acre.
- Signing and striping shall be installed in accordance with City of Wichita Specifications and Codes. Striping shall be painted markings in conformance with the latest edition of the Standard Specifications for State Road and Bridge Construction by the Kansas Department of Transportation.
- All striping shall be solid, 4" in width and shall be yellow in color.
- All trees and shrubs in direct conflict with construction shall be removed.
- Paved Lot to be constructed with 6" asphaltic concrete pavement (4" bituminous base/2" A.C. surface) and subgrade to be compacted to 98% Standard Density and treated with 25 lbs./s.y. Pebble Quick Lime. Asphaltic pavement to conform with City of Wichita pavement specifications.
- Utility service connections are to be installed per applicable City codes.
- Contractor to ensure positive drainage away from building foundation and turf areas to proposed sidewalk trench frame openings or across sidewalks.
- Contractor to maintain a minimum of .5% slope on proposed PVC roof drain pipes throughout project.



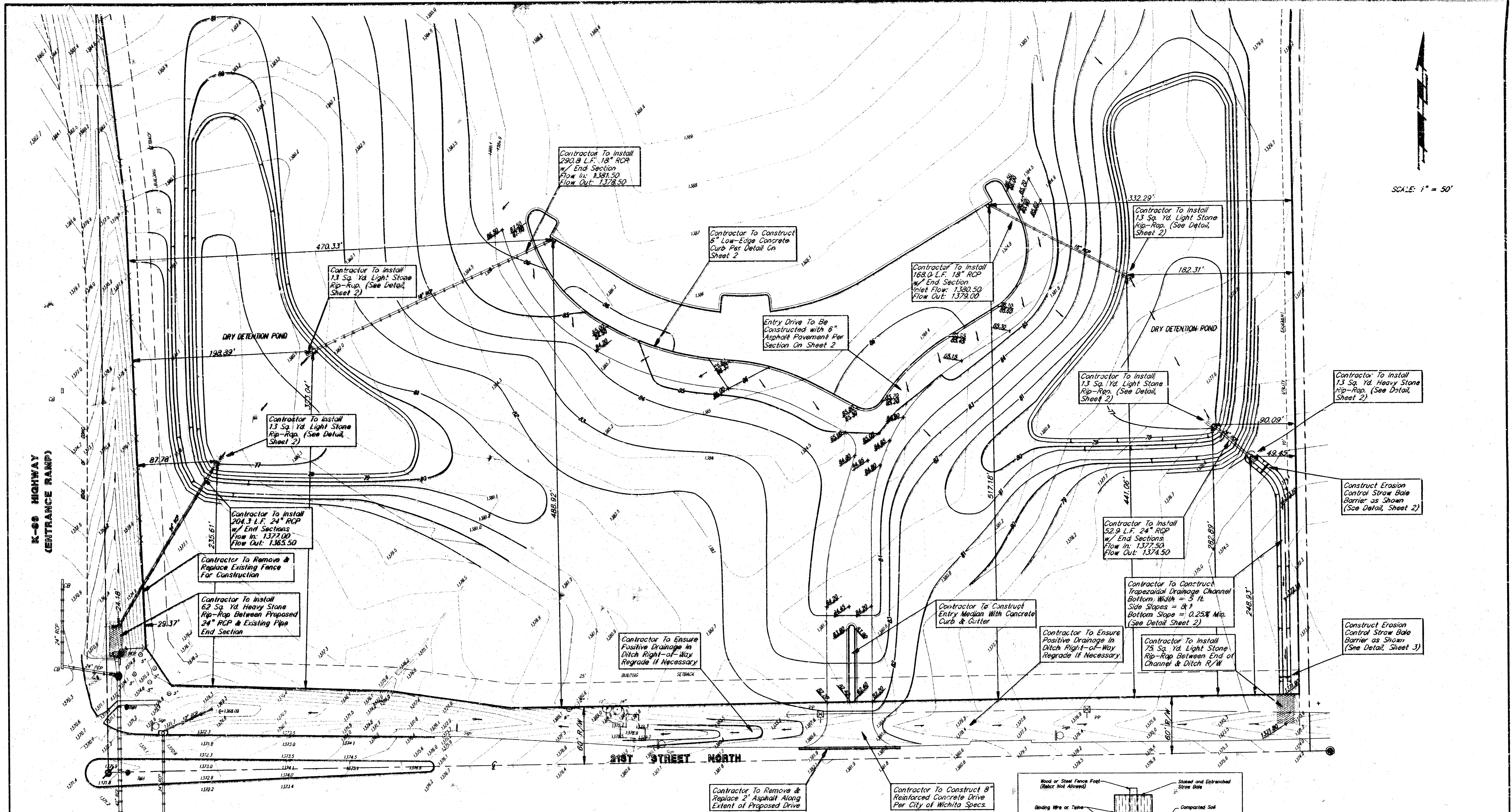
Revised March 16, 1998 JAB

MESSIAH BAPTIST CHURCH
SITE GRADING
PARKING LOT GRADES

BAUGHMAN COMPANY P. A.
ENGINEERING, SURVEYING, & PLANNING
S. B. 262 7371 • 315 ELLIS • WICHITA, KANSAS 67211

PROJECT NUMBER 779 PPS (607861)		SHEET 2	
DESIGN NEW	DRAWN JAB	APPROVED NEW	DATE 12/21/97
		SCALE 1" = 30'	

ENG. MESSIAH CHURCH



LEGAL DESCRIPTION:

LOT 1, MESSIAH BAPTIST CHURCH 4TH ADDITION, SEDGWICK COUNTY, KANSAS

BENCHMARK:

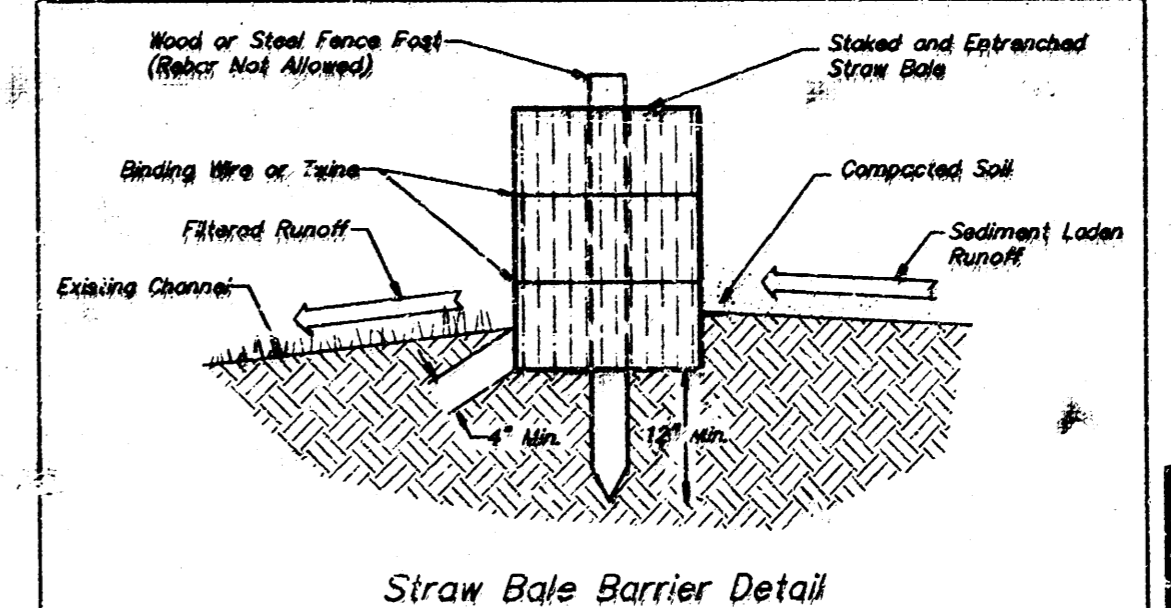
GREENWICH AND 21st ST. NORTH CITY OF WICHITA
 BENCHMARK - DISC 41" SOUTH AND 58" WEST OF
 IRON CTR. LINE 60TH 17.0' SW OF ASPHALT, 14.2'
 EAST OF FACE P.P. 17.0' WEST OF FACE P.P.
 ELEVATION = 1361.38 (MSL)

GRADING NOTES:

- Contractor will be required to provide notice to utility companies a minimum of twenty-four (24) hours prior to any excavation, as follows:
 Kansas One-Call 687-2470
 The Contractor must notify the following in case of an emergency:
 Cablevision 262-4270
 K.P.L. Gas Service Company 263-2061
 Kansas Gas & Electric Company 383-8650
 or 383-5600
 Southwestern Bell Telephone Company 1-571-2611

- Exist. utilities and their locations, as shown on the plans, represent the best information obtainable for design. The Contractor will be required to work around existing utilities which do not conflict with proposed construction.
- Traffic affected by the construction on this project shall be handled in accordance with the latest edition of the Manual on Uniform Traffic Control Devices.
- The Contractor to verify utility locations prior to construction of this project.
- All disturbed areas shall be seeded with Rebel II fescue at the rate of 340 lbs. per acre. Fertilizer (13-13-13) shall be applied at the rate of 100 lbs. per acre.

- All trees and shrubs in direct conflict with construction shall be removed.
- Entry drive to be constructed with 6" asphaltic concrete pavement (4" bituminous base/2" A.C. surface) and subgrade to be compacted to 95% Standard Density and treated with 25 lbs./s.y. Pebble Quick Lime. Asphaltic pavement to conform with City of Wichita pavement specifications.
- Contractor is to ensure that all on site drainage is directed into the proposed detention ponds or ditch right-of-way.
- Contractor to obtain necessary KDOT permits for drainage construction in the K-96 ramp right-of-way.
- Contractor to obtain necessary Sedgwick County highway permits for access to 21st Street North.



Revised March 16, 1998 JMN
 Revised February 13, 1998 BLC
 Revised February 9, 1993 BLC

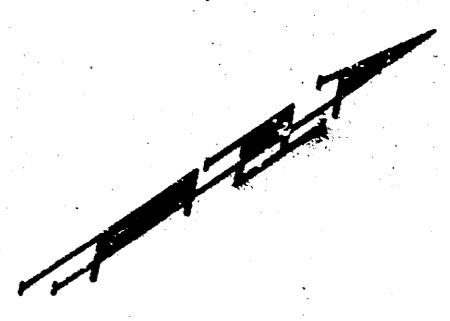
MESSIAH BAPTIST CHURCH
SITE GRADING

BAUGHMAN COMPANY P. A.
 ENGINEERING, SURVEYING, & PLANNING
 316-262-7271 • 315 E. LUIS • WICHITA, KANSAS 67211

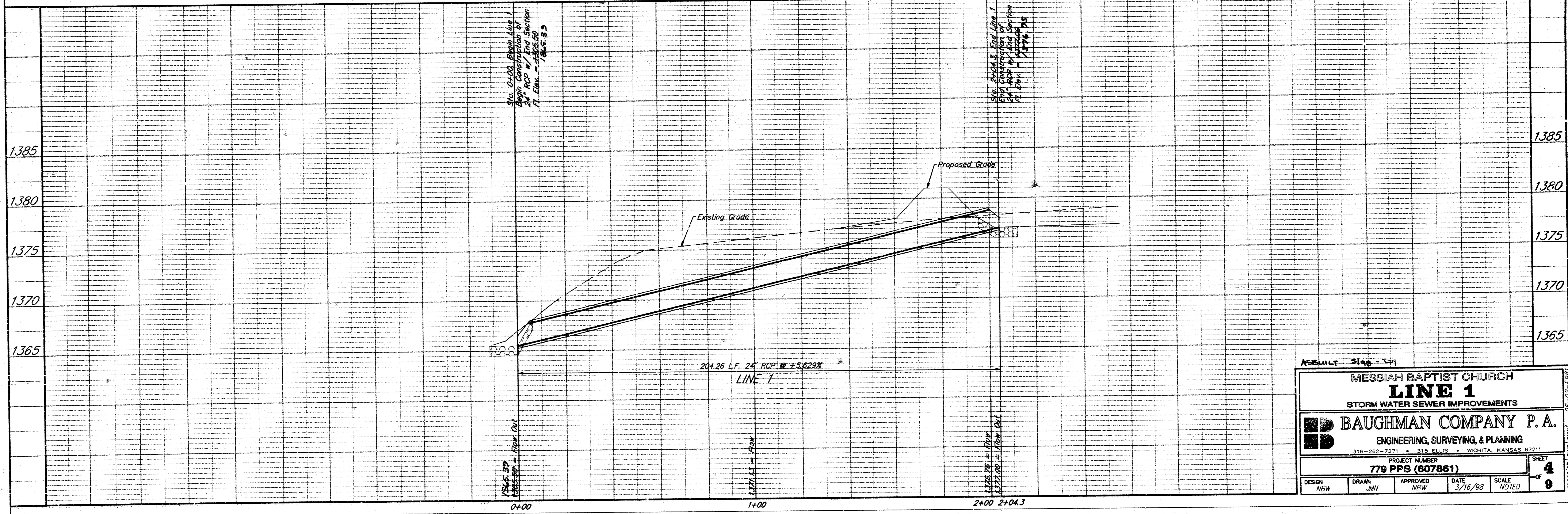
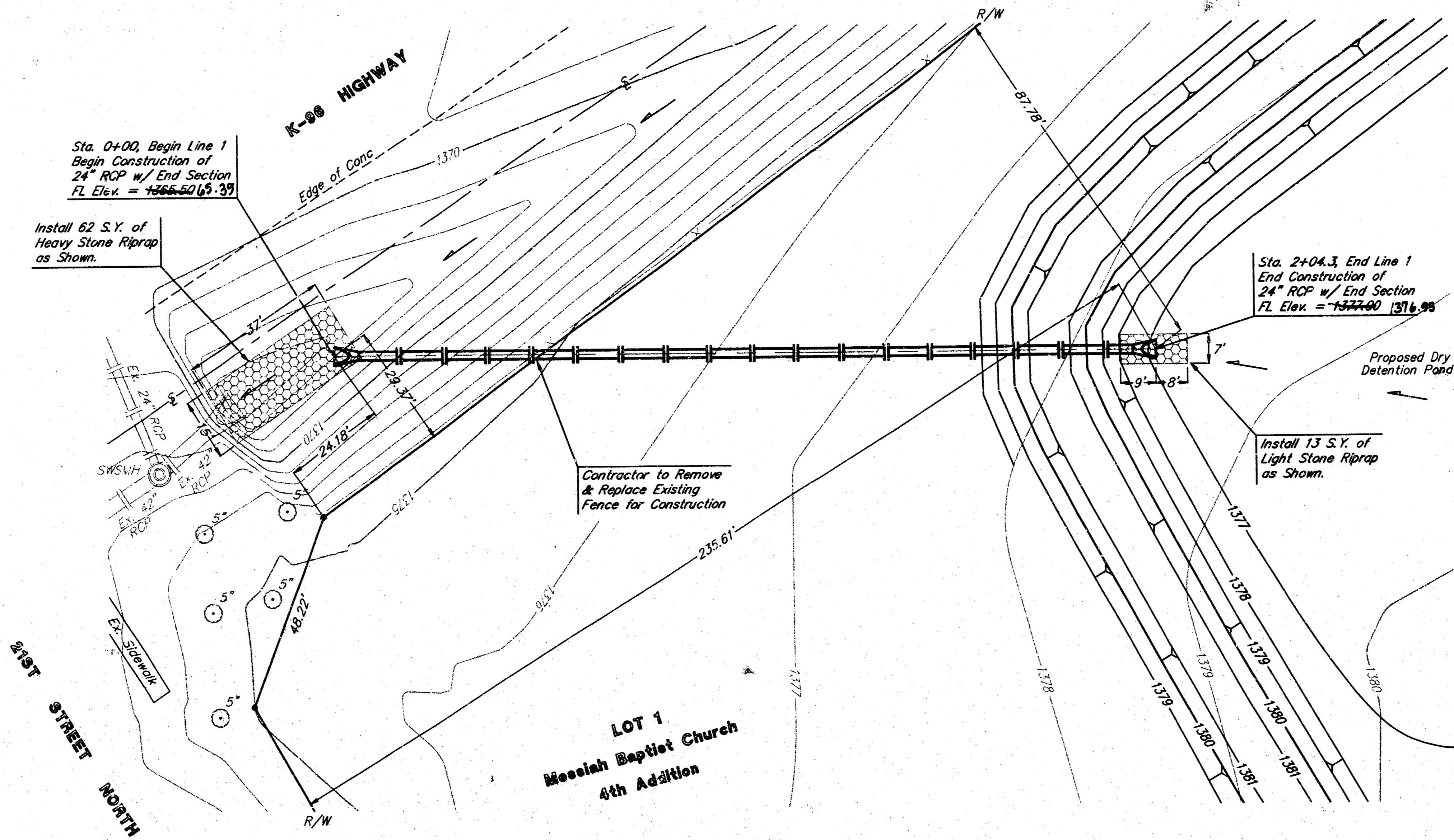
DESIGN	DRAWN	APPROVED	DATE	SCALE	SHEET
NBW	JAB	NBW	12/21/97	5/40W	3 OF 8

BENCHMARK:

GREENWICH AND 21st ST. NORTH CITY OF WICHITA
 BENCHMARK - DISC 41" SOUTH AND 58" WEST OF
 IRON CTR LINE BOTH. 17.0' SW OF ASPHALT, 14.2'
 EAST OF FACE P.P. 17.0' WEST OF FACE P.P.
 ELEVATION = 1361.39 (MSL)



SCALE:
 1" = 20' Horizontal
 1" = 5' Vertical
 • = Iron



ASBUILT Slag - 1/24

MESSIAH BAPTIST CHURCH
LINE 1
 STORM WATER SEWER IMPROVEMENTS

BAUGHMAN COMPANY P.A.
 ENGINEERING, SURVEYING, & PLANNING
 316-282-2221 • 315 ELLIS • WICHITA, KANSAS 67211

PROJECT NUMBER
779 PPS (607861)

DESIGN: NEW DRAWN: JMN APPROVED: NEW DATE: 3/16/98 SCALE: NOTED

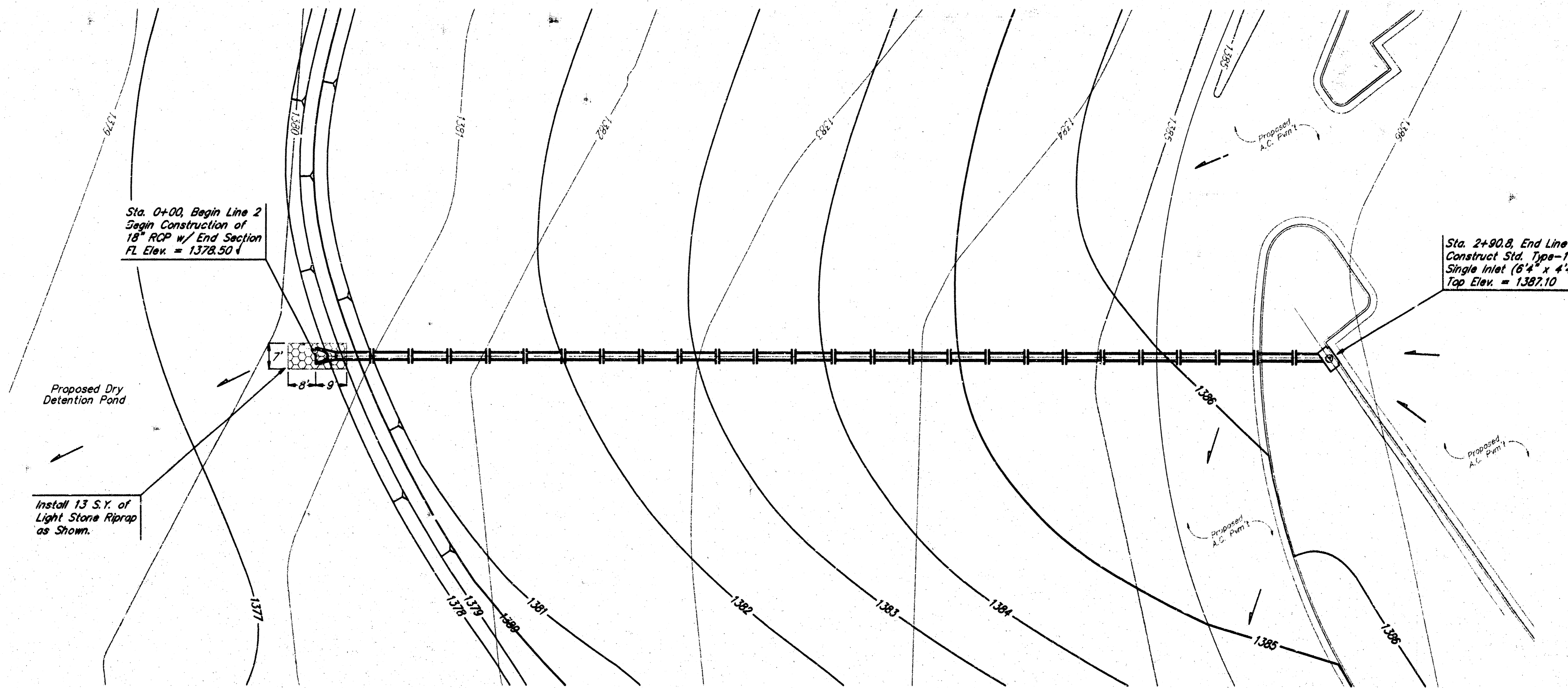
SHEET
4
 OF
8

MESSIAH BAPTIST CHURCH 98-02-E98

BENCHMARK:
 GREENWICH AND 21st ST. NORTH CITY OF WICHITA
 BENCHMARK - DISC #1 SOUTH AND 58' WEST OF
 IRON CIR. LINE BOTH, 17.0' SW OF ASPHALT, 14.2'
 EAST OF FACE P.P. 17.0' WEST OF FACE P.P.
 ELEVATION = 1361.39 (MSL)

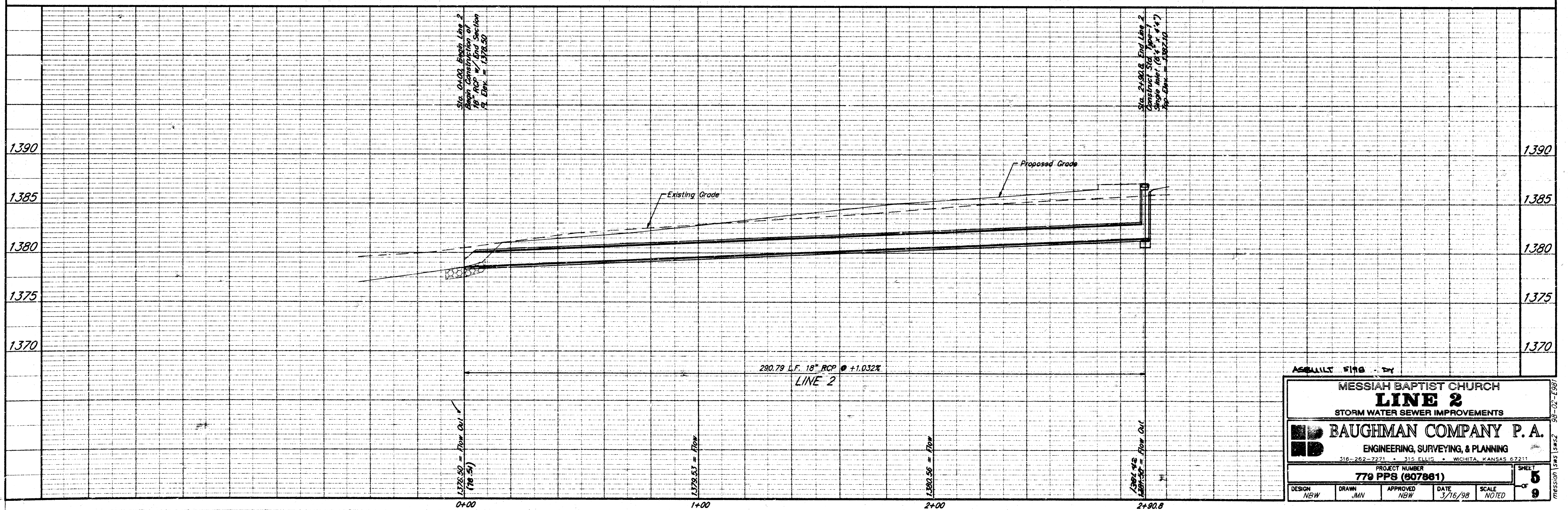
LOT 1
 Messiah Baptist Church
 4th Addition

LOT 1
 Messiah Baptist Church
 4th Addition



SCALE:
 1" = 20' Horizontal
 1" = 5' Vertical
 • = Iron

See Site Grading Plans
 for Detention Pond
 Construction.



ASBUILT FILE BY

MESSIAH BAPTIST CHURCH
LINE 2
 STORM WATER SEWER IMPROVEMENTS

BAUGHMAN COMPANY P. A.
 ENGINEERING, SURVEYING, & PLANNING
 316-262-2221 • 316-262-2222 • WICHITA, KANSAS 67211

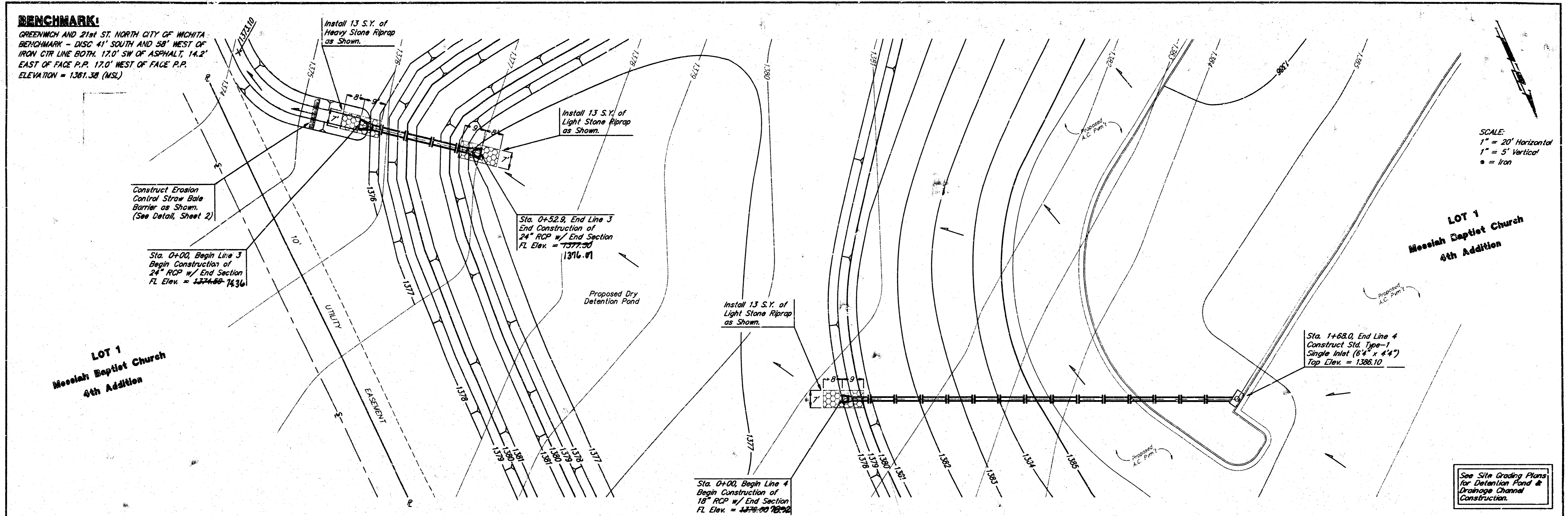
PROJECT NUMBER
779 PFS (607861)

DESIGN: NEW DRAWN: JMN APPROVED: NBW DATE: 3/16/98 SCALE: NOTED

SHEET 5 OF 9

BENCHMARK:

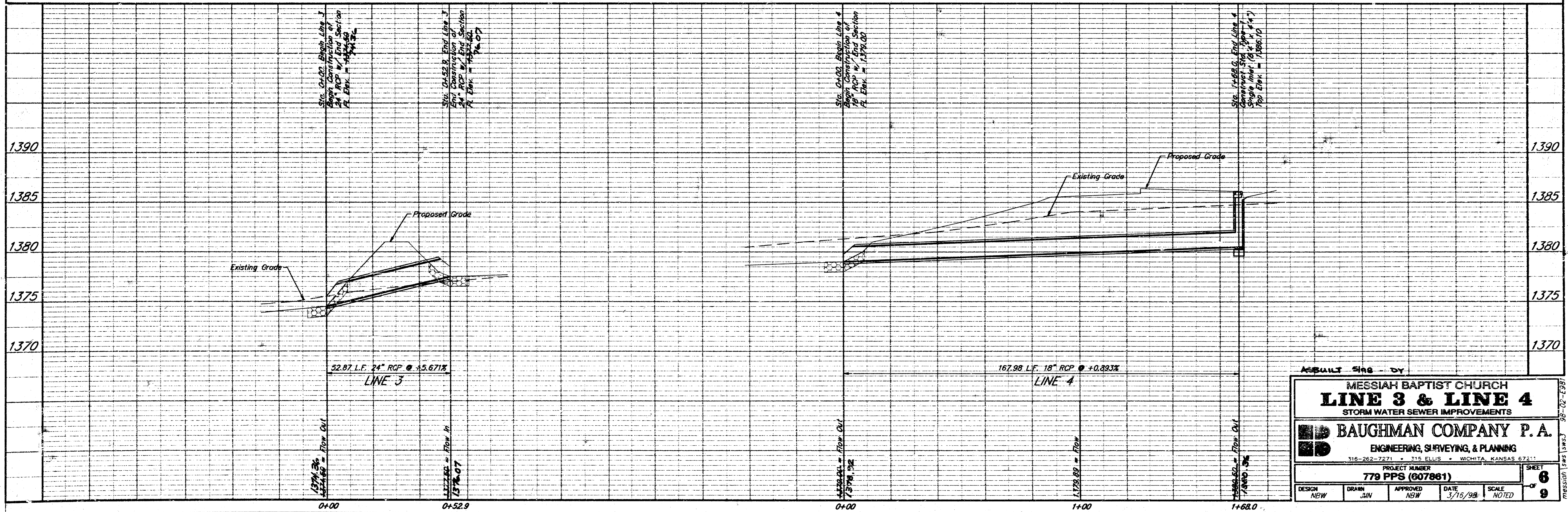
GREENWICH AND 21st ST, NORTH CITY OF MOHITA
 BENCHMARK - DISC 4" SOUTH AND 58" WEST OF
 IRON CTR LINE BOTH. 17.0' SW OF ASPHALT, 14.2'
 EAST OF FACE P.P. 17.0' WEST OF FACE P.P.
 ELEVATION = 1361.38 (MSL)



SCALE:
 1" = 20' Horizontal
 1" = 5' Vertical
 ● = Iron

LOT 1
 Messiah Baptist Church
 4th Addition

See Site Grading Plans
 for Detention Pond &
 Drainage Channel
 Construction.



ASBUILT SWS - DY

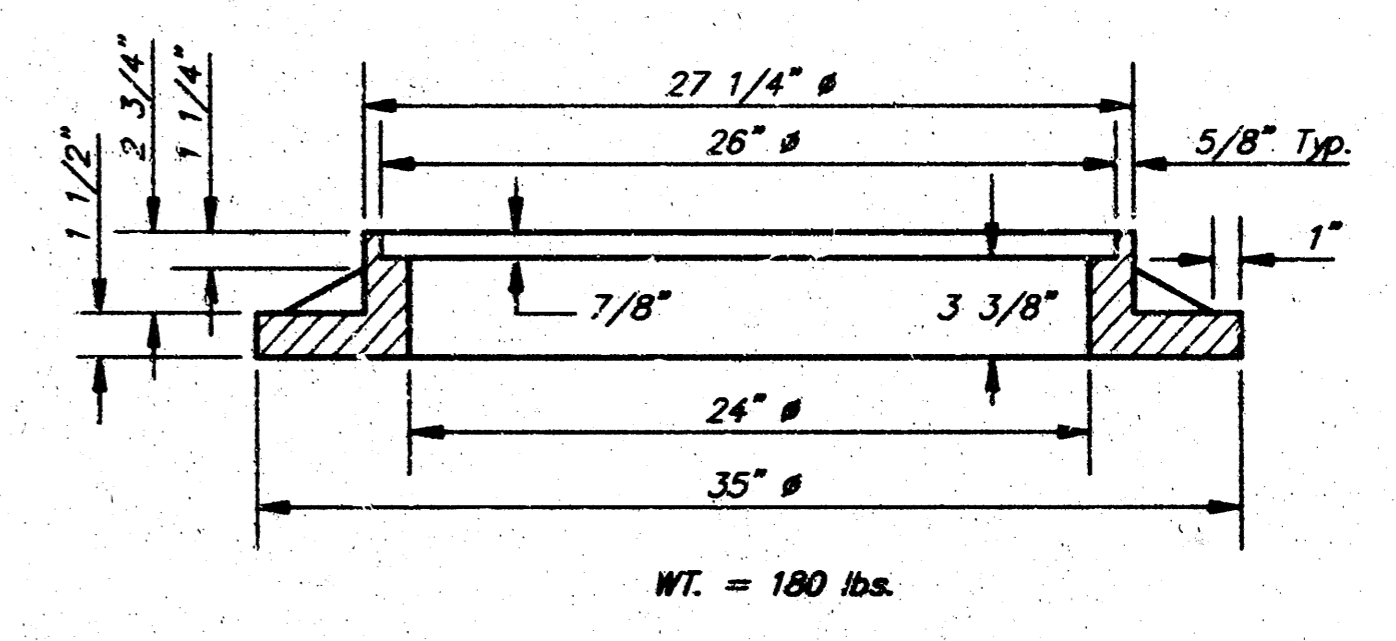
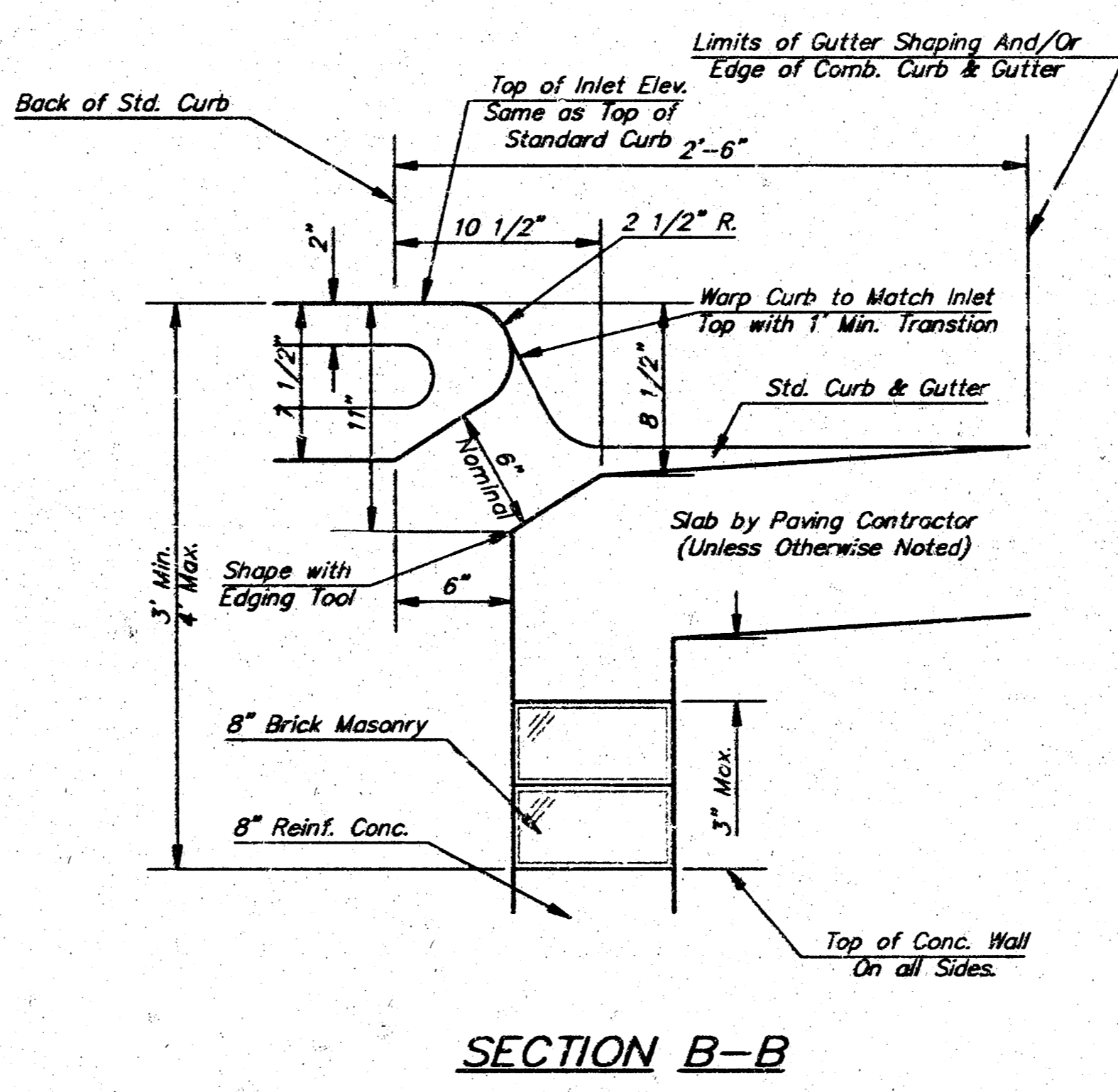
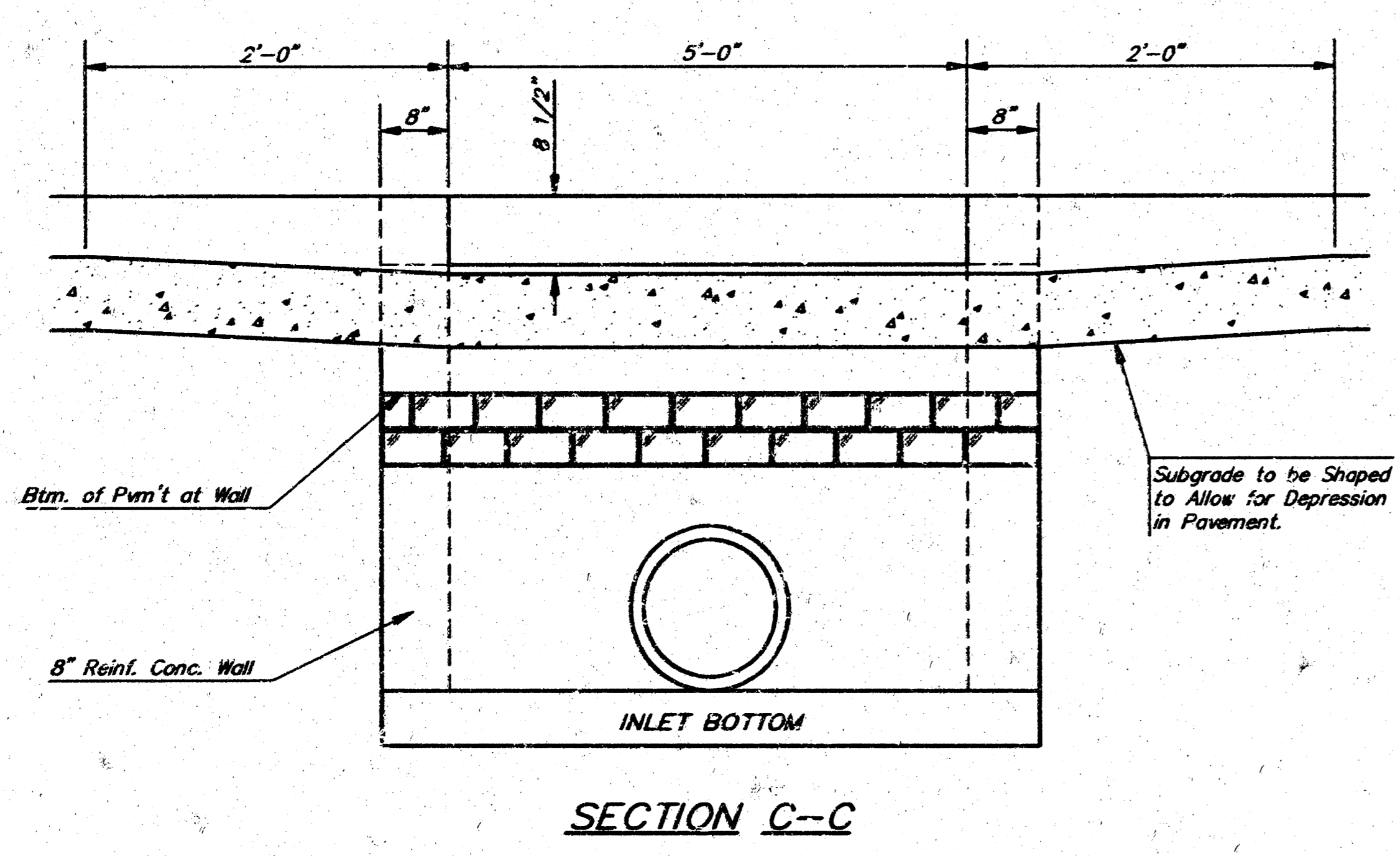
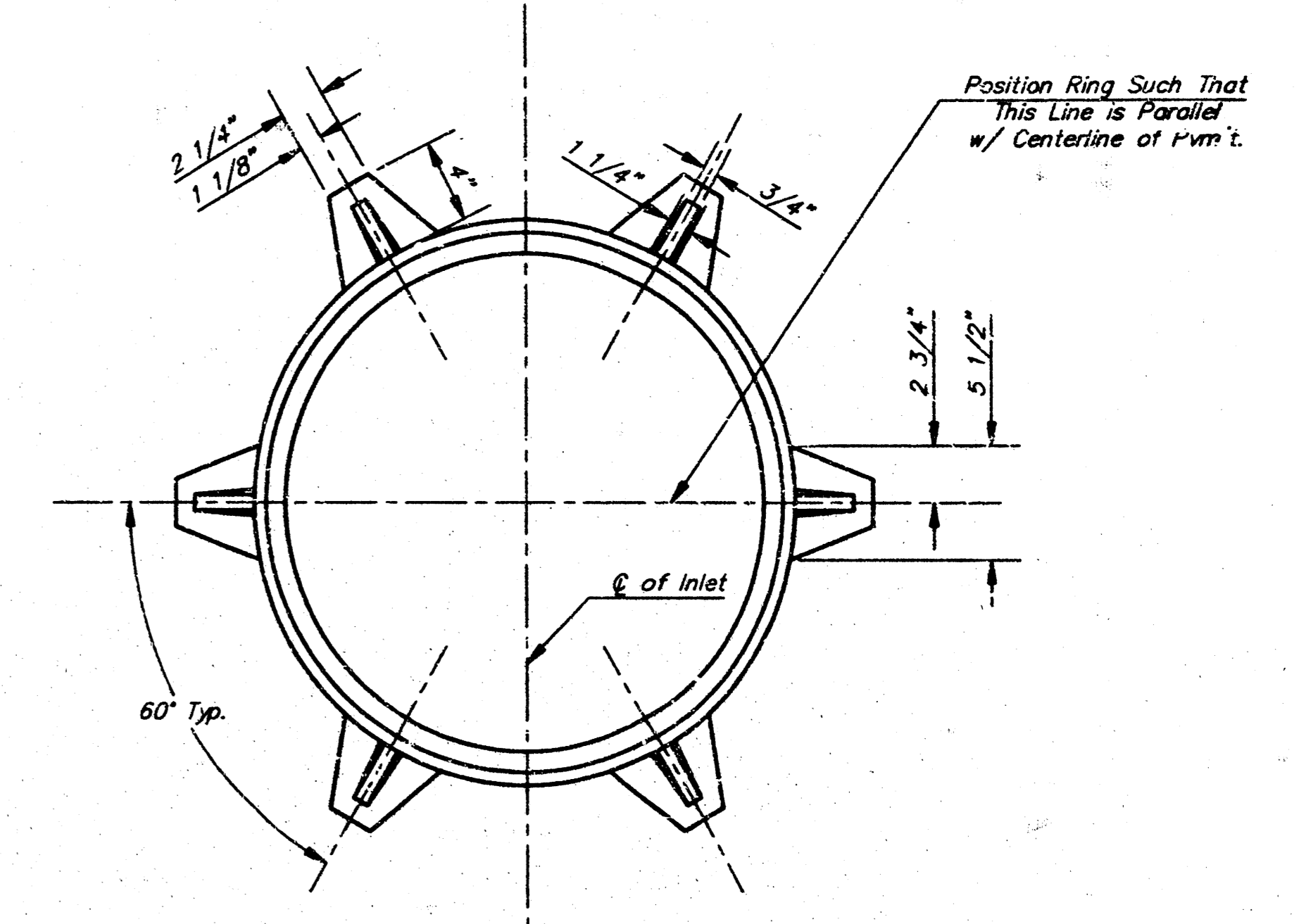
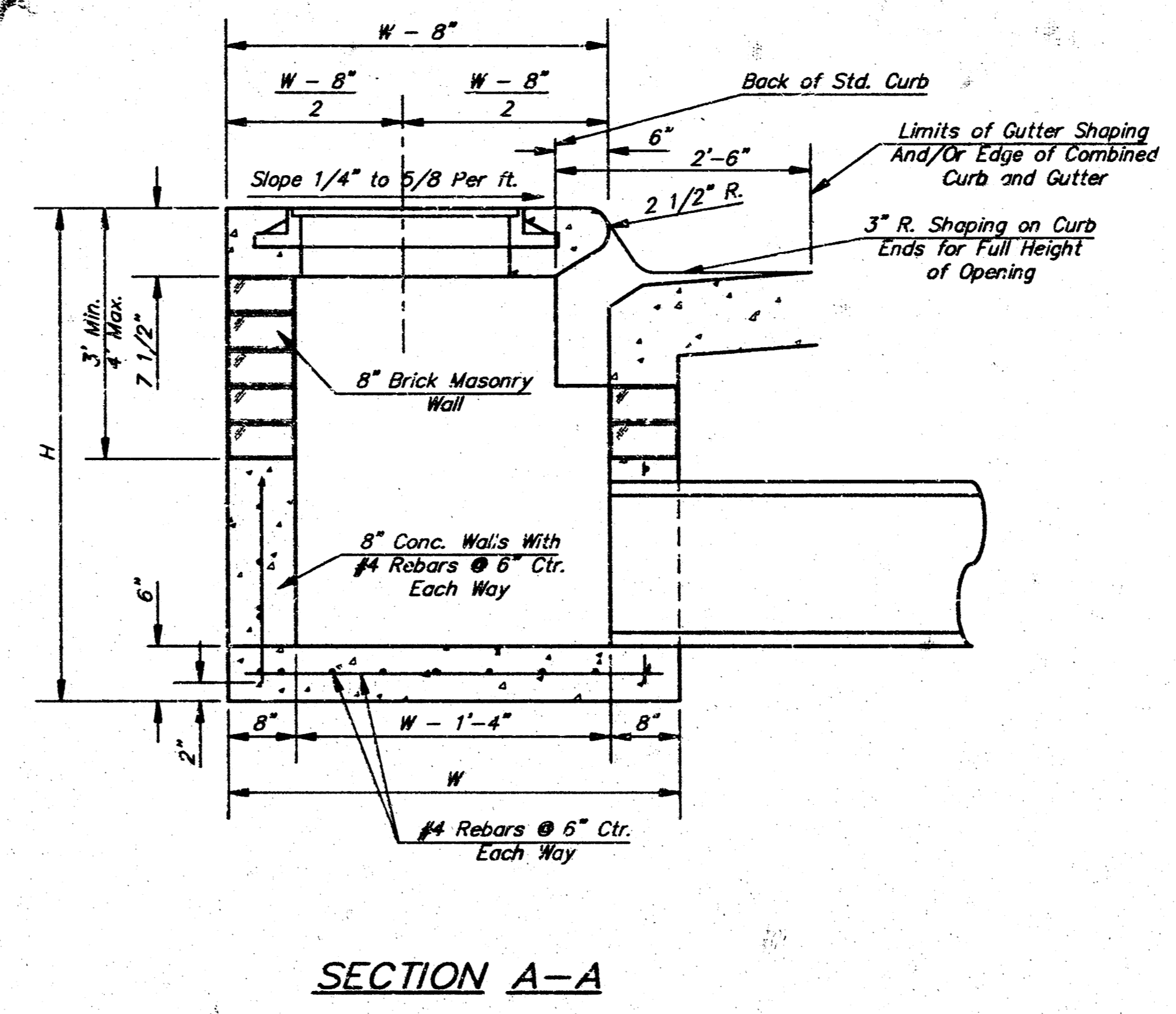
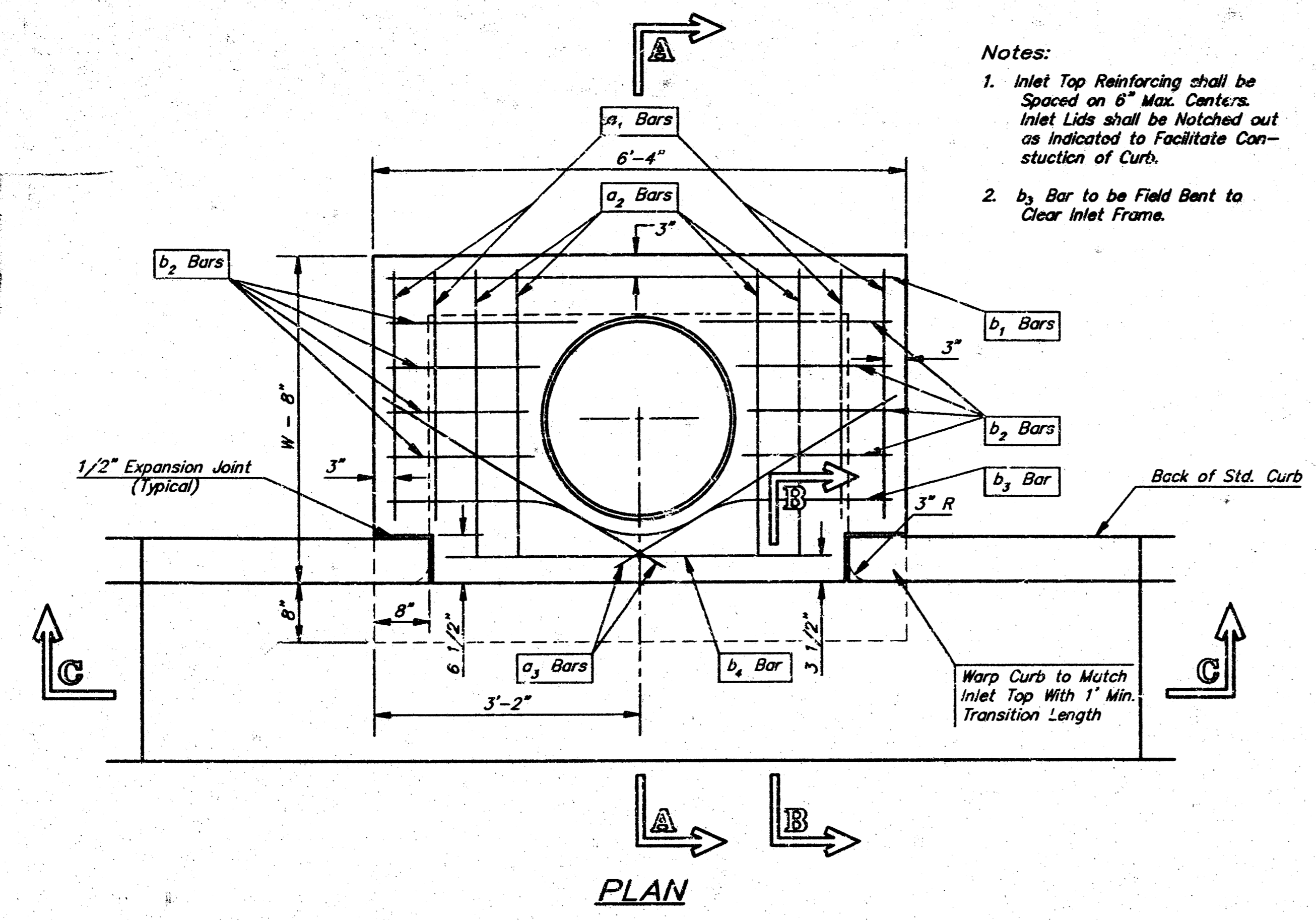
MESSIAH BAPTIST CHURCH
LINE 3 & LINE 4
 STORM WATER SEWER IMPROVEMENTS

BAUGHMAN COMPANY P.A.
 ENGINEERING, SURVEYING, & PLANNING
 315-262-7271 • 315 ELLIS • MOHITA, KANSAS 67211

PROJECT NUMBER
779 FFS (007861)

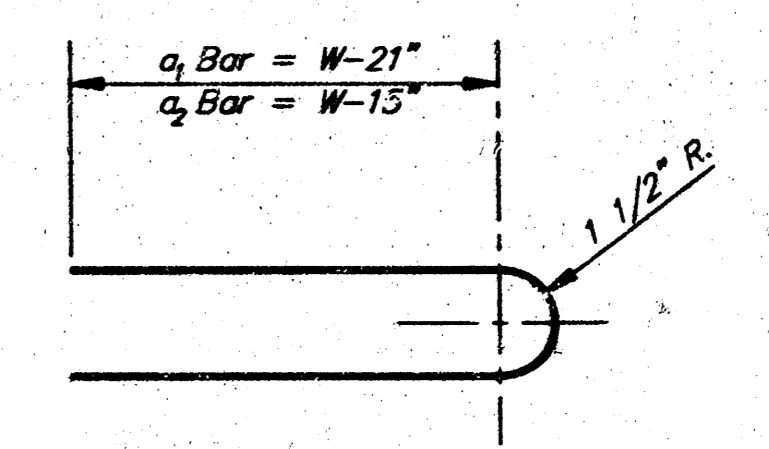
DESIGN: NEW DRAWN: JUN APPROVED: NEW DATE: 3/16/98 SCALE: NOTED

SHEET **6** OF **9**



MANHOLE RING AND COVER

See City of Wichita Standard Manhole Ring and Cover Detail Sheet for Cover Details to Be Used With Inlet Frame.



BENDING DIAGRAM

STEEL SCHEDULE

BAR NUMBER	a ₁	a ₂	b ₁						b ₂	b ₃	b ₄	Wt. Lbs.
			#1-4"	#1-5"	#1-6"	#1-7"	#1-8"	#1-9"				
	4	4	2	1	3	5	7	9	6	1	1	
	SIZE	#4	#4	#4	#4	#4	#4	#4	#4	#4	#6	
LENGTH	W=4'-4"	5'-7"	6'-7"	4'-0"	6'-1"	-	-	-	1'-9"	6'-2"	4'-8"	60±
	W=5'-4"	7'-7"	8'-7"	5'-0"	6'-1"	-	-	-	1'-9"	6'-2"	4'-8"	81±
	W=6'-4"	9'-7"	10'-7"	6'-0"	6'-1"	-	-	-	1'-9"	6'-2"	4'-8"	101±
	W=7'-4"	11'-7"	12'-7"	7'-0"	6'-1"	-	-	-	1'-9"	6'-2"	4'-8"	121±
	W=8'-4"	13'-7"	14'-7"	8'-0"	6'-1"	-	-	-	1'-9"	6'-2"	4'-8"	141±

Note: a₂ Bars to be Placed Approx. 2" Below Top of Inlet Cover.

W	PRE-CAST TOP SIZE	PIPE SIZE	CU. YD. CONC.
4'-4"	3'-8" 6'-4" 7 1/2"	21" & SMALLER	0.38±
5'-4"	4'-8" 6'-4" 7 1/2"	24" & 30"	0.51±
6'-4"	5'-8" 6'-4" 7 1/2"	36" & 42"	0.64±
7'-4"	6'-8" 6'-4" 7 1/2"	48" & 54"	0.77±
8'-4"	7'-8" 6'-4" 7 1/2"	60" & 66"	0.90±

GENERAL NOTES

- Concrete tops to be installed on this mortar cushion to insure full support along brick walls. Concrete tops may be cast in place or precast. Concrete used for inlet construction shall be concrete pavement mix.
- Contractor shall have the option of constructing 8" brick masonry walls between the concrete inlet base and top on this inlet when W=6'-4" and H=7'-0" or less.
- Inlet invert shall be shaped with 8 sack sand mix concrete to create flow channels and to increase hydraulic efficiency such that the inlet will be self cleaning between all inlet and/or outlet pipes.
- The ends of all pipes installed in inlets shall be cut off flush with the inside face of the inlet wall.

Revised - Dec. 21, 1984

CITY OF WICHITA, KANSAS
TYPE 1 CURB INLET
 INLET OPENING = 6'X5'-0"

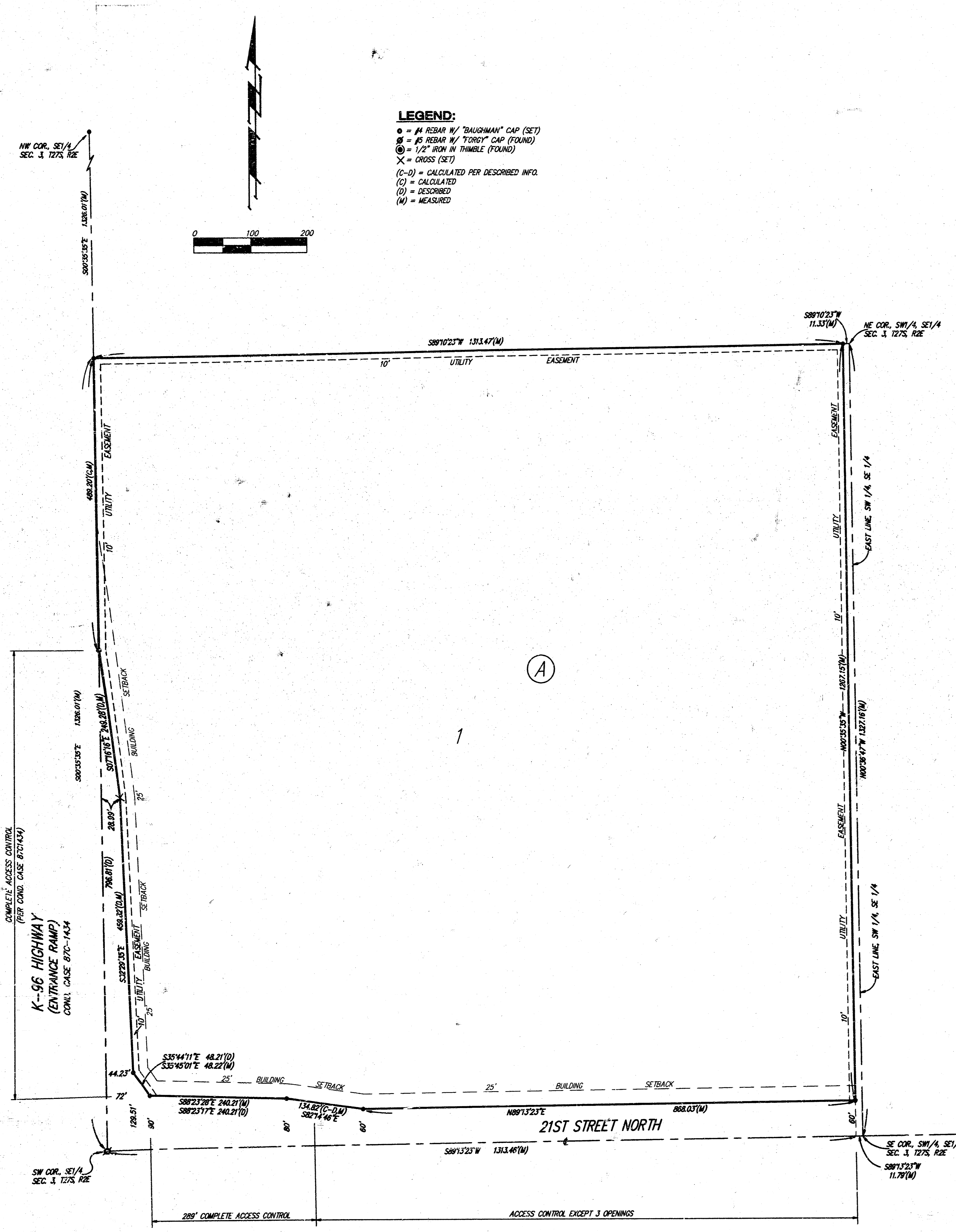
BAUGHMAN COMPANY P.A.
 ENGINEERING, SURVEYING, & PLANNING
 316-262-7271 • 315 ELLIS • WICHITA, KANSAS 67211

PROJECT NUMBER
779 PPS (607861)

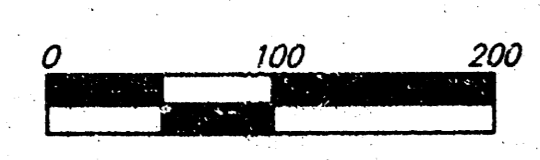
DESIGN: C.O.W. DRAWN: STAFF APPROVED: DATE: SCALE: NONE SHEET: 7 OF 9

MESSIAH BAPTIST CHURCH 4TH ADDITION

SEDGWICK COUNTY, KANSAS



LEGEND:
 ○ = #1 REBAR W/ "BAUGHMAN" CAP (SET)
 ⊗ = #5 REBAR W/ "TORDY" CAP (FOUND)
 ⊙ = 1/2" IRON IN THIMBLE (FOUND)
 X = CROSS (SET)
 (C-D) = CALCULATED PER DESCRIBED INFO.
 (C) = CALCULATED
 (F) = DESCRIBED
 (M) = MEASURED



State of Kansas) SS We, Baughman Company, P.A. Surveyors in
 Sedgwick County) do hereby certify that we have surveyed
 and platted "MESSIAH BAPTIST CHURCH 4TH ADDITION," Sedgwick
 County, Kansas, and that the accompanying plot is a true and correct
 exhibit of the property surveyed, described as follows:

The West 40 acres of the Southwest Quarter of the Southeast
 Quarter of Section 3, Township 27 South, Range 2 East of the
 Sixth Principal Meridian, Sedgwick County, Kansas, EXCEPT that part
 condemned in Case 87C-1434.

Existing public easements and dedications being vacated
 by virtue of K.S.A. 12-512(b).

Baughman Company, P.A.

Michael G. Conrey, Surveyor

Know all men by these presents that we,
 the undersigned, have caused the land in the surveyors certificate
 to be platted into a Lot and a Block to be known as "MESSIAH BAPTIST
 CHURCH 4TH ADDITION," Sedgwick County, Kansas. The utility easements
 are hereby granted as indicated for the construction and maintenance
 of all public utilities. All abutters rights of access to or from
 21st Street North over and across the south line of Lot 1, Block A,
 are hereby granted to the appropriate governing body provided, however,
 that said Lot 1 shall have access to 21st Street North at three locations
 over all except the west 289 feet of said south line as shall be
 determined by the Engineer for the appropriate governing body.

Messiah Baptist Church, Inc.

_____, President

State of Kansas) SS The foregoing instrument acknowledged before
 Sedgwick County) me, this ____ day of _____, 199__, by _____, President
 of Messiah Baptist Church, Inc., on behalf of the corporation.

My App't. Exp. _____, Notary Public

This plat of "MESSIAH BAPTIST CHURCH 4TH ADDITION,"
 Wichita, Sedgwick County, Kansas has been submitted to and
 approved by the Wichita-Sedgwick County Metropolitan Area
 Planning Commission, Wichita, Kansas.
 Dated this ____ day of _____, 199__
 Wichita-Sedgwick County Metropolitan Area Planning Commission

_____, Chairman
 John C. Frye
 _____, Secretary
 Marvin S. Krout

This plat approved and all dedications shown
 hereon accepted by the City Council of the City of Wichita, Kansas,
 this ____ day of _____, 199__

_____, Mayor
 Bob Knight
 _____, City Clerk
 Pat Burnett

This plat approved and all dedications shown
 hereon accepted by the Board of Commissioners of Sedgwick County,
 Kansas, this ____ day of _____, 199__

_____, Chairman
 Thomas G. Winters
 _____, Chair Pro-Tem
 Paul W. Hancock
 _____, Commissioner
 Betsy Gwin
 _____, Commissioner
 Melody C. Miller
 _____, Commissioner
 Mark F. Schroeder
 _____, County Clerk
 James Alford

Entered on transfer record this ____ day
 of _____, 199__

_____, County Clerk
 James Alford

State of Kansas) SS This is to certify that this plat has been
 Sedgwick County) filed for record in the office of the Register of Deeds, this ____ day
 of _____, 199__, at ____ o'clock ____ M., and is duly recorded.

_____, Register of Deeds
 Larry Consolver
 _____, Deputy
 Michael D. Hurtt

BAUGHMAN COMPANY P.A.
 ENGINEERING, SURVEYING, & PLANNING
 (316)-262-7271 • 315 ELLIS • WICHITA, KANSAS 67211
 PROJECT NO. 87-02-8715 7/PLAT/MS3849 DMC-04