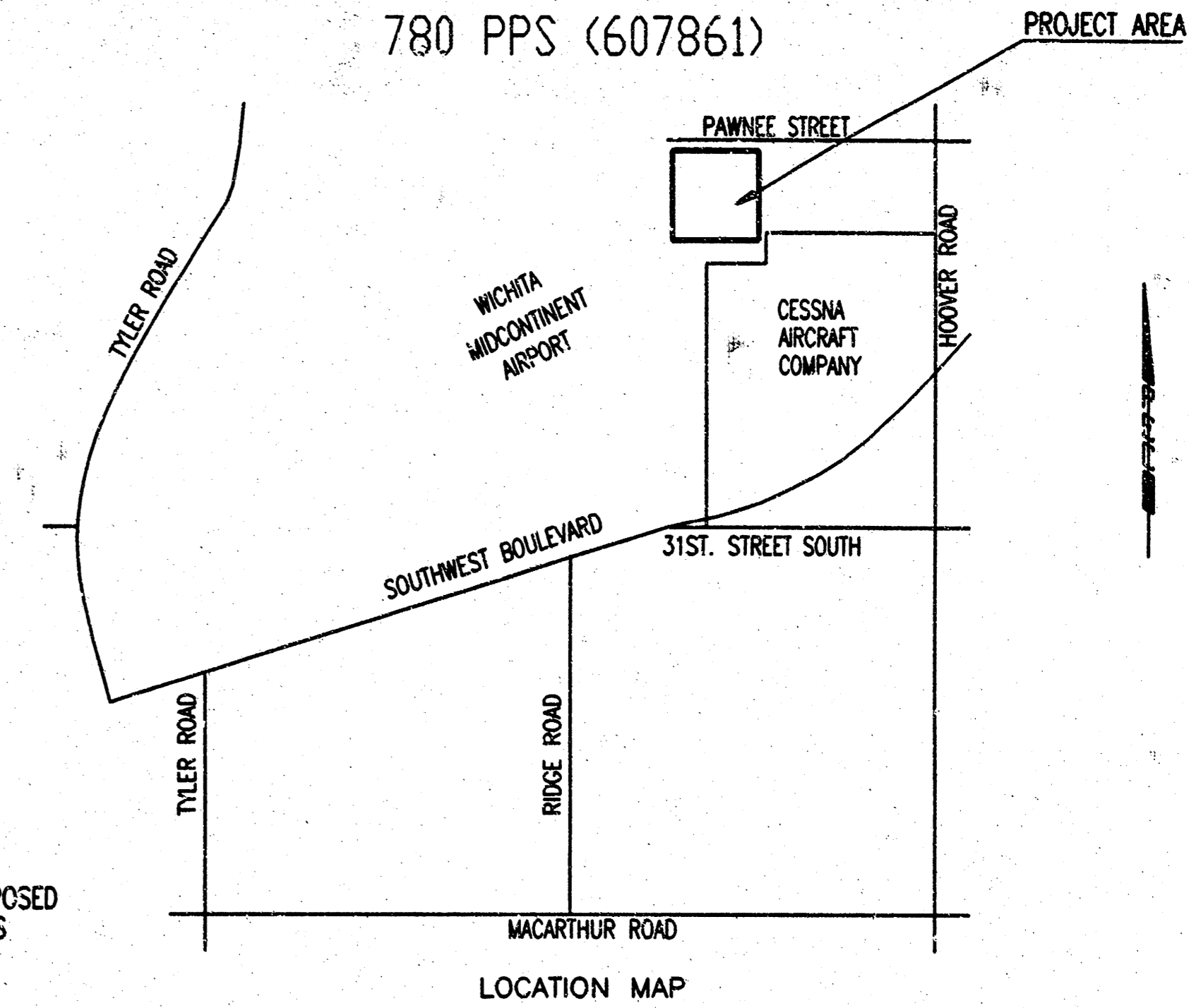


CONSTRUCTION PLANS FOR STORM WATER SEWER CESSNA AIRCRAFT COMPLETION CENTER 2617 SOUTH HOOVER ROAD

THE CITY OF WICHITA, KANSAS
MICHAEL E. LINDEBAK, P.E. - CITY ENGINEER
780 PPS (607861)



NOTE: REFERENCE MECHANICAL PLANS FOR FLOWLINES OF RAINLEADERS (RL) AND 18" PVC STORM SEWER LINE TO MUD/OIL INTERCEPTOR AT BUILDING FOUNDATION. CONTRACTOR SHALL USE REDUCERS, WYES AND 45° BEND FITTINGS AS APPROVED BY THE ARCHITECT, FOR MAKING CONNECTIONS TO THE STORM SEWER LINES.

ALL LAWN/TURF AREAS DISTURBED BY CONSTRUCTION OF THE PROPOSED IMPROVEMENTS SHALL BE RESTORED WITH THE SAME GRASS/SOD AS EXISTING. RESTORATION OF DISTURBED AREAS SHALL INCLUDE, BUT NOT BE LIMITED TO, TOP SOIL PREPARATION, SEEDING, MULCH, AND/OR RESEEDING. ALL SEEDING/SODDING WORK SHALL BE IN ACCORDANCE WITH THE CITY OF WICHITA STANDARD SPECIFICATIONS AND THE CITY OF WICHITA ADMINISTRATIVE REGULATION NO. AR78 WHICH GOVERNS CLEANUP AND RESTORATION OR REPLACEMENT FOLLOWING CONSTRUCTION.

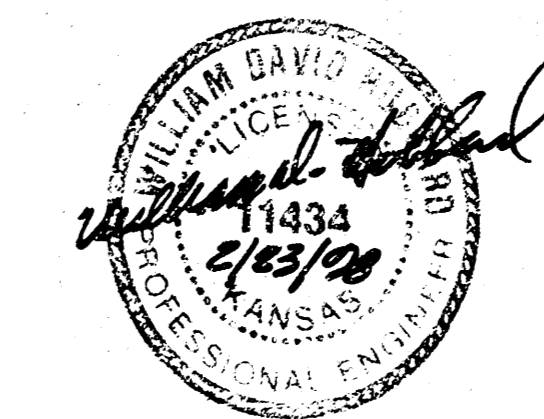
HORIZONTAL CONTROL POINT NO. 1 N=3,000.000, E=3,000.000, 1/2" IRON BAR
HORIZONTAL CONTROL POINT NO. 2 N=4,069.3708, E=3,000.0000, 1/2" IRON BAR

BENCH MARK:
CITY OF WICHITA DISK,
SE QUADRANT OF INTERSECTION
OF PAWNEE AND HOOVER
CENTER OF INTERSECTION
ELEVATION: 1295.59 (NAVD83)

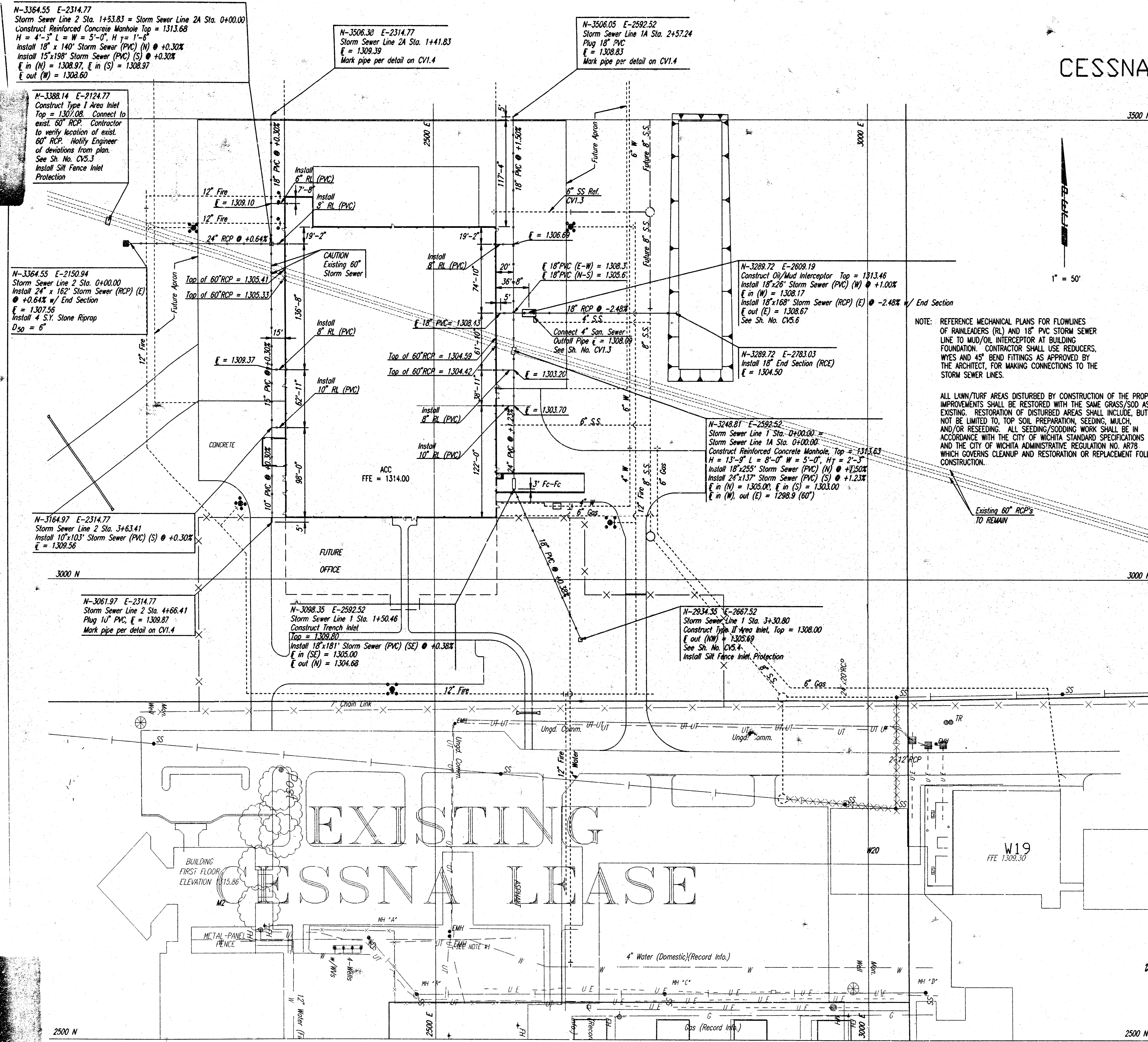
APPROVED AS NOTED
By CITY ENGINEER OF WICHITA

Storm Sewers VRH 2/25/98

INSPECTION AND TESTING FOR THIS PROJECT IS TO BE PROVIDED BY A LICENSED CONSULTING ENGINEERING FIRM CONTRACTED BY THE OWNER/DEVELOPER. SAID INSPECTION TO BE IN ACCORDANCE WITH THE CITY OF WICHITA STANDARD CONSTRUCTION ENGINEERING PRACTICES AND CERTIFIED BY A LICENSED PROFESSIONAL ENGINEER. NO WORK SHALL BE PERFORMED IN DEDICATED EASEMENTS OR THE PUBLIC RIGHT-OF-WAY BY THE CONTRACTOR WITHOUT SUCH INSPECTION NOR SHALL ANY WORK BE COMMENCED IN DEDICATED EASEMENTS OR PUBLIC RIGHT-OF-WAY WITHOUT WRITTEN AUTHORIZATION BY THE CITY ENGINEER.



No.	Revision	By	Date
STORM WATER SEWER			
CESSNA AIRCRAFT COMPLETION CENTER			
MICHAEL E. LINDEBAK, P.E. - CITY ENGINEER CITY OF WICHITA PRIVATE PROJECT 780 PPS (607861)			
PROFESSIONAL ENGINEERING CONSULTANTS, P.A.			
ENGINEERS WICHITA, KANSAS			
Designed by	DH	Job No.	32-97C28
Drawn by	DMM	Date	January 1998
			Sh. 1 of 2



N-3364.55 E-2314.77
Storm Sewer Line 2 Sta. 1+53.83 = Storm Sewer Line 2A Sta. 0+00.00
Construct Reinforced Concrete Manhole Top = 1313.68
H = 4'-5" L = W = 5'-0", H = 1'-6"
Install 18" x 140" Storm Sewer (PVC) (N) @ +0.30%
Install 15" x 198" Storm Sewer (PVC) (S) @ +0.30%
E in (N) = 1308.97, E in (S) = 1308.97
E out (N) = 1308.60

N-3506.30 E-2314.77
Storm Sewer Line 2A Sta. 1+41.83
E = 1309.39
Mark pipe per detail on CV1.4

N-3506.05 E-2592.52
Storm Sewer Line 1A Sta. 2+57.24
Plug 18" PVC
E = 1308.83
Mark pipe per detail on CV1.4

N-3388.14 E-2124.77
Construct Type I Area Inlet
Top = 1307.08. Connect to
exist. 60" RCP. Contractor
to verify location of exist.
60" RCP. Notify Engineer
of deviations from plan.
See Sh. No. CV5.3
Install Silt Fence Inlet
Protection

N-3364.55 E-2150.94
Storm Sewer Line 2 Sta. 0+00.00
Install 24" x 162" Storm Sewer (RCP) (E)
@ +0.64% w/ End Section
E = 1307.56
Install 4 S.Y. Stone Riprap
D₅₀ = 6"

N-3164.97 E-2314.77
Storm Sewer Line 2 Sta. 3+63.41
Install 10" x 103" Storm Sewer (PVC) (S) @ +0.30%
E = 1309.56

N-3061.97 E-2314.77
Storm Sewer Line 2 Sta. 4+66.41
Plug 10" PVC, E = 1309.87
Mark pipe per detail on CV1.4

N-3098.35 E-2592.52
Storm Sewer Line 1 Sta. 1+50.46
Construct Trench Inlet
Top = 1308.80
Install 18" x 181" Storm Sewer (PVC) (SE) @ +0.30%
E in (SE) = 1305.00
E out (N) = 1304.68

N-2934.35 E-2667.52
Storm Sewer Line 1 Sta. 3+30.80
Construct Type II Area Inlet, Top = 1308.00
E out (NW) = 1305.69
See Sh. No. CV5.4
Install Silt Fence Inlet Protection

N-3248.81 E-2592.52
Storm Sewer Line 1 Sta. 0+00.00 =
Storm Sewer Line 1A Sta. 0+00.00
Construct Reinforced Concrete Manhole, Top = 1313.63
H = 13'-9" L = 8'-0" W = 5'-0", H_T = 2'-3"
Install 18" x 255" Storm Sewer (PVC) (N) @ +1.50%
Install 24" x 137" Storm Sewer (PVC) (S) @ +1.23%
E in (N) = 1305.06, E in (S) = 1303.00
E in (W), out (E) = 1298.9 (60")

N-3289.72 E-2809.19
Construct Oil/Mud Interceptor Top = 1313.46
Install 18" x 28" Storm Sewer (PVC) (W) @ +1.00%
E in (W) = 1308.17
Install 18" x 168" Storm Sewer (RCP) (E) @ -2.48% w/ End Section
E out (E) = 1308.67
See Sh. No. CV5.6

N-3289.72 E-2783.03
Install 18" End Section (RCE)
E = 1304.50

EXISTING CESSNA LEASE

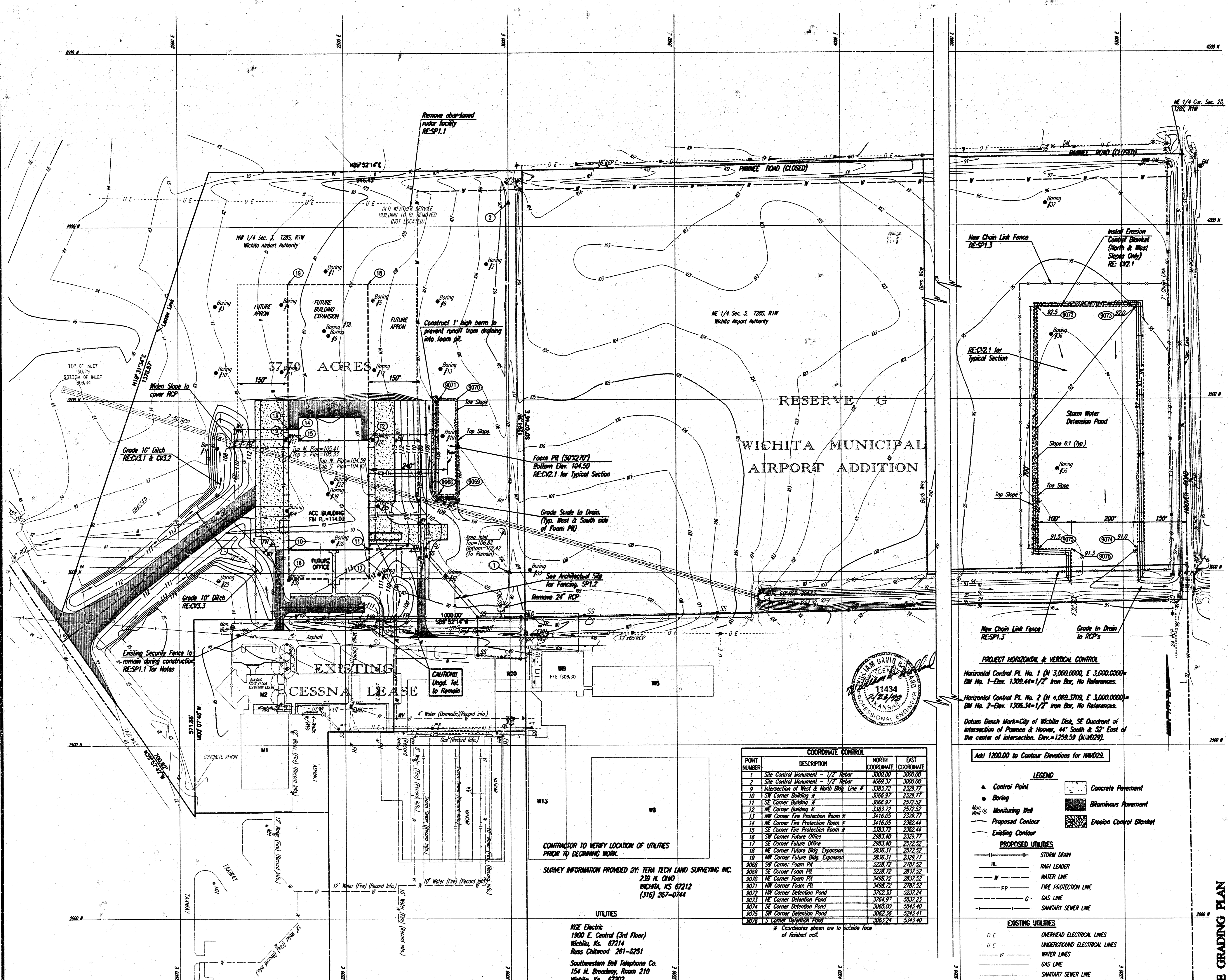
BUILDING FIRST FLOOR ELEVATION 1315.86

METAL-PANEL FENCE

4" Water (Domestic) (Record Info.)

Gas (Record Info.)

6/1997/197230/survey.dgn
 Printed by: JRP 2-23-98



CONTRACTOR TO VERIFY LOCATION OF UTILITIES
 PRIOR TO BEGINNING WORK.
 SURVEY INFORMATION PROVIDED BY: TERRA TECH LAND SURVEYING INC.
 239 N. OMAHA
 WICHITA, KS 67212
 (316) 267-0144

UTILITIES
 KGE Electric
 1900 E. Central (3rd Floor)
 Wichita, KS. 67214
 Russ Chittwood 261-6251
 Southwestern Bell Telephone Co.
 154 N. Broadway, Room 210
 Wichita, KS. 67202
 Greg Sharpe 268-2245

POINT NUMBER	DESCRIPTION	NORTH COORDINATE	EAST COORDINATE
1	Site Control Monument - 1/2" Rebar	3000.00	3000.00
2	Site Control Monument - 1/2" Rebar	4083.37	3000.00
9	Intersection of West & North Bldg. Line #	3383.72	2326.77
10	SW Corner Building #	3066.97	2326.77
11	SE Corner Building #	3066.97	2572.52
12	NE Corner Building #	3383.72	2572.52
13	NW Corner Fire Protection Room #	3416.05	2326.77
14	NE Corner Fire Protection Room #	3416.05	2382.44
15	SE Corner Fire Protection Room #	3383.72	2382.44
16	SW Corner Future Office	2983.40	2326.77
17	SE Corner Future Office	2983.40	2572.52
18	NE Corner Future Bldg. Expansion	3836.31	2572.52
19	NW Corner Future Bldg. Expansion	3836.31	2326.77
3068	SW Corner: Foam Pit	3228.72	2787.52
3069	SE Corner: Foam Pit	3228.72	2837.52
3070	NW Corner: Foam Pit	3488.72	2837.52
3071	NE Corner: Foam Pit	3488.72	2787.52
3072	NW Corner: Detention Pond	3782.33	3237.24
3073	NE Corner: Detention Pond	3784.97	3237.24
3074	SE Corner: Detention Pond	3083.07	5243.40
3075	SW Corner: Detention Pond	3082.36	5243.41
3076	S Corner: Detention Pond	3083.24	5243.40

* Coordinates shown are to outside face of finished mat.

PROJECT HORIZONTAL & VERTICAL CONTROL
 Horizontal Control PL No. 1 (N 3,000,000.00, E 3,000,000.00) -
 BM No. 1 - Elev. 1,308.44 ± 1/2" Iron Bar, No References.
 Horizontal Control PL No. 2 (N 4,089,370.9, E 3,000,000.00) -
 BM No. 2 - Elev. 1,306.34 ± 1/2" Iron Bar, No References.
 Datum Bench Mark - City of Wichita Dist. SE Quadrant of
 intersection of Pawnee & Hoover, 44° South & 52° East of
 the center of intersection. Elev. = 1259.59 (N-4029).

ADD 1200.00 to Contour Elevations for NW029.

- LEGEND**
- ▲ Control Point
 - Boring
 - Mon Well Monitoring Well
 - - - Proposed Contour
 - - - Existing Contour
 - PROPOSED UTILITIES ---
 - STORM DRAIN ---
 - RAIN LEADER ---
 - WATER LINE ---
 - FIRE PROTECTION LINE ---
 - GAS LINE ---
 - SANITARY SEWER LINE ---
 - UNDERGROUND TELEPHONE LINES ---
 - OVERHEAD ELECTRICAL LINES ---
 - UNDERGROUND ELECTRICAL LINES ---
 - WATER LINES ---
 - GAS LINE ---
 - SANITARY SEWER LINE ---
 - UNDERGROUND TELEPHONE LINES ---

MCCULLAGH VAN SICKLE & PERRY
 ARCHITECTS - PLANNERS - LANDSCAPE ARCHITECTS
 101 N. WASHINGTON STREET, SUITE 200
 WICHITA, KANSAS 67202
 TEL: 268-2245 FAX: 268-2246

THE CESSNA AIRCRAFT COMPANY
AIRCRAFT COMPLETION CENTER
MD-CONTINENT FACILITY
WICHITA, KANSAS

PROJECT NO. 9757
DATED FEB. 23, 1998
REVISED:

PHASE I
2/2