

GENERAL NOTES

Rubble from the removal of miscellaneous structures and excess excavation which is to be wasted shall be disposed of on sites to be provided by the Contractor. These sites shall be approved by the Engineer as to suitability, appearance and site location. Locations that, in the opinion of the Engineer, will leave an unsightly appearance will not be approved.

All disposal sites must be approved by the Kansas Department of Health and Environment. Material either stockpiled or disposed of in a flood plain would require a Kansas State Board of Agriculture permit. Any material dumped in waters of the United States or wetlands is subject to U.S. Corps permitting regulations. Any material buried or stockpiled beyond approved of Engineers construction limits would require additional archeological investigations unless buried in a previously approved borrow location.

The Contractor shall notify pipeline companies at least 24 hours in advance of any work being performed across and/or adjacent to pipelines.

Trees and shrubs in public right-of-way which are in direct conflict with proposed new construction shall be removed by the Contractor with the Engineer's approval. Trees and shrubs which are not in direct conflict with proposed new construction shall be saved and protected from damage.

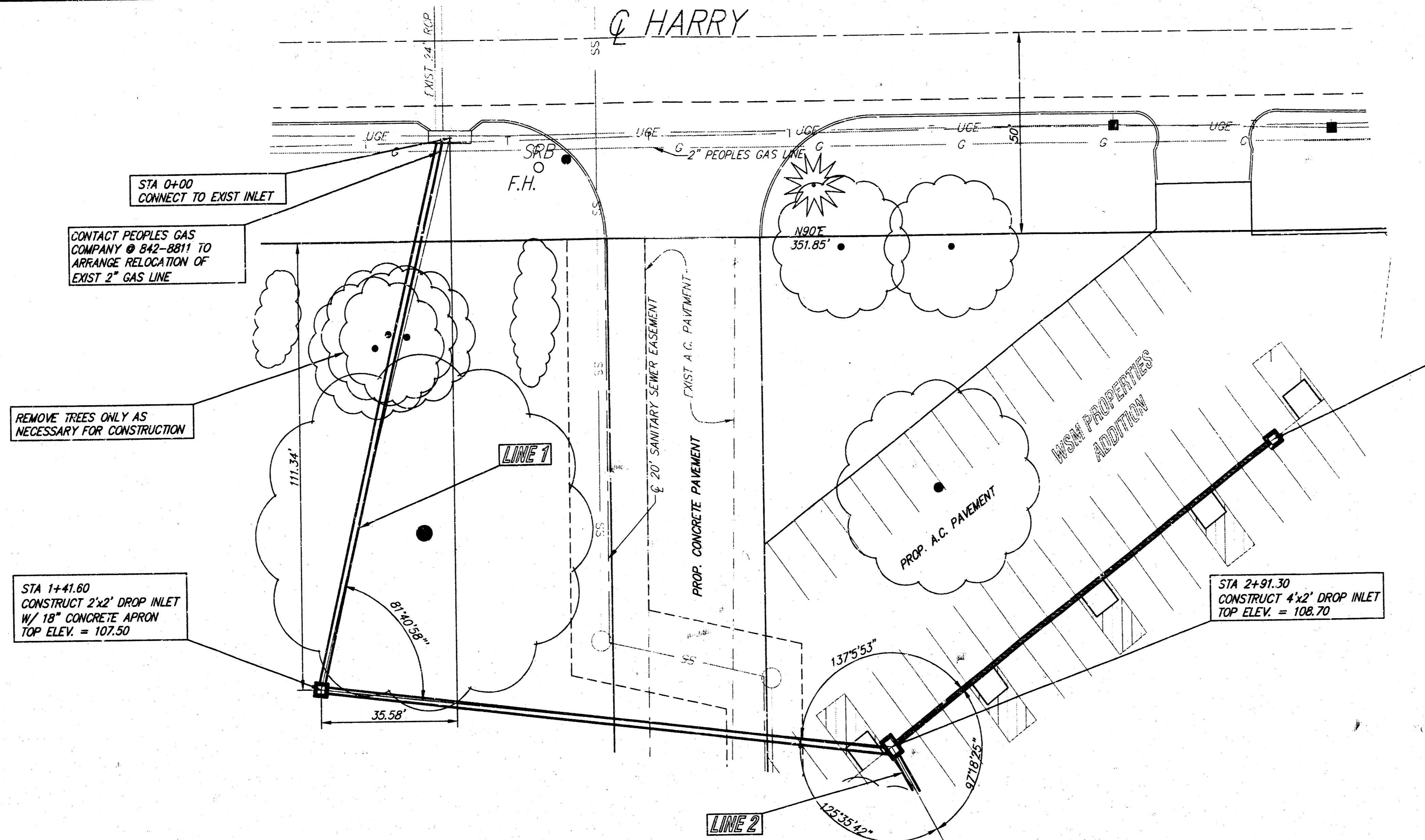
The Contractor shall give all property owners and/or tenants of developed property directly abutting the construction of this project a minimum of ten (10) days advance notice prior to start of construction.

The Contractor shall be responsible for preserving property irons. The Contractor will be required to re-establish any property irons which are damaged or destroyed by his construction operations. Such irons shall be re-established by a licensed land surveyor in accordance with state laws.

Contractor will be required to provide a minimum advance notice of twenty-four (24) hours to utility companies prior to starting any excavation as follows:

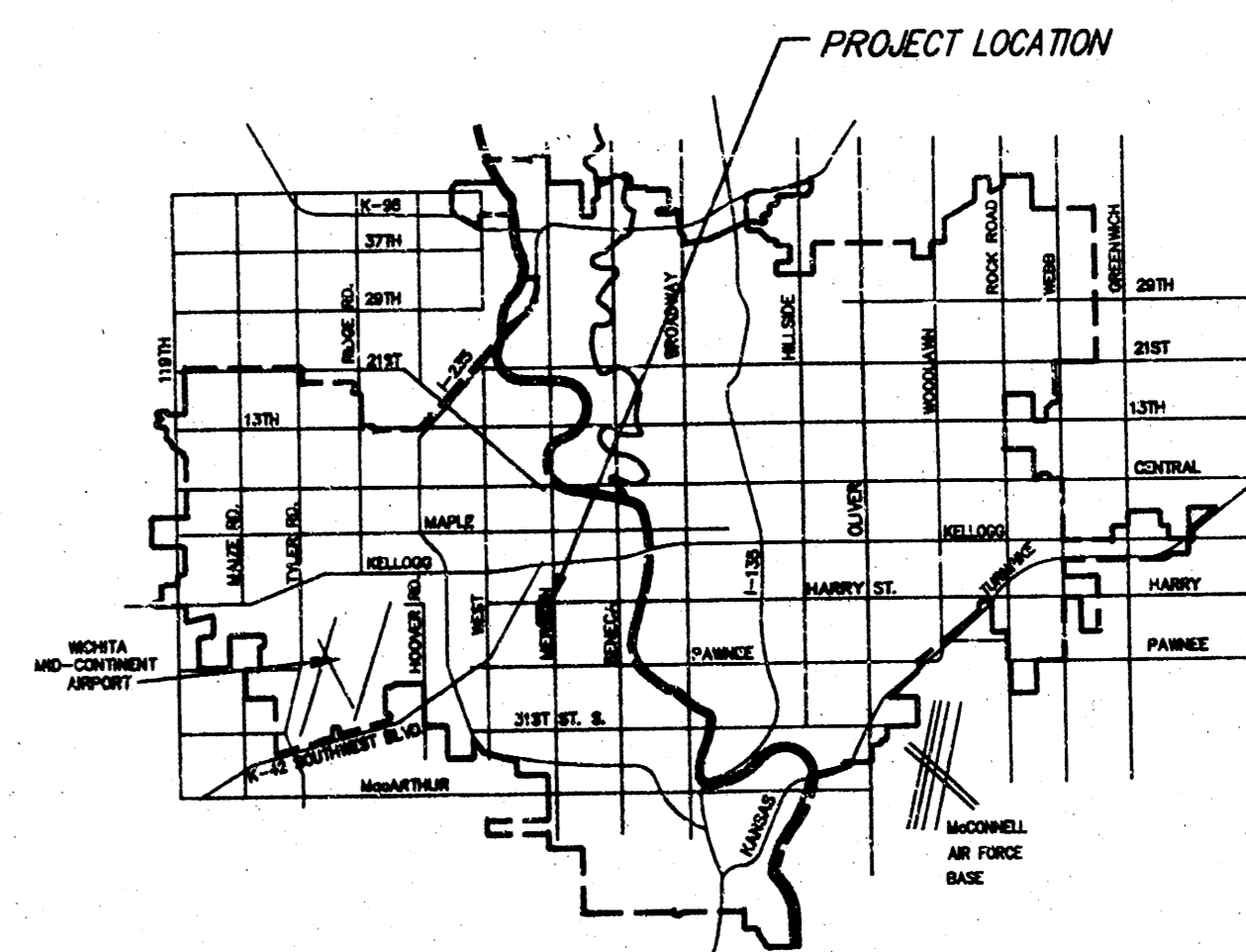
- | | |
|-------------------------------------|----------------------|
| Kansas One-Call | 687-2470 |
| Cablevision | 262-4270 or 263-2061 |
| K.G.&E. Gas | 383-8650 |
| Peoples Natural Gas Company | 383-8600 |
| Southwestern Bell Telephone Company | 942-8350 or 263-8161 |
| City of Wichita Water Department | 1-571-2611 |
| City of Wichita Sewer Maintenance | 268-4908 |
| | 268-4071 |

The Contractor must notify the following in case of an emergency:

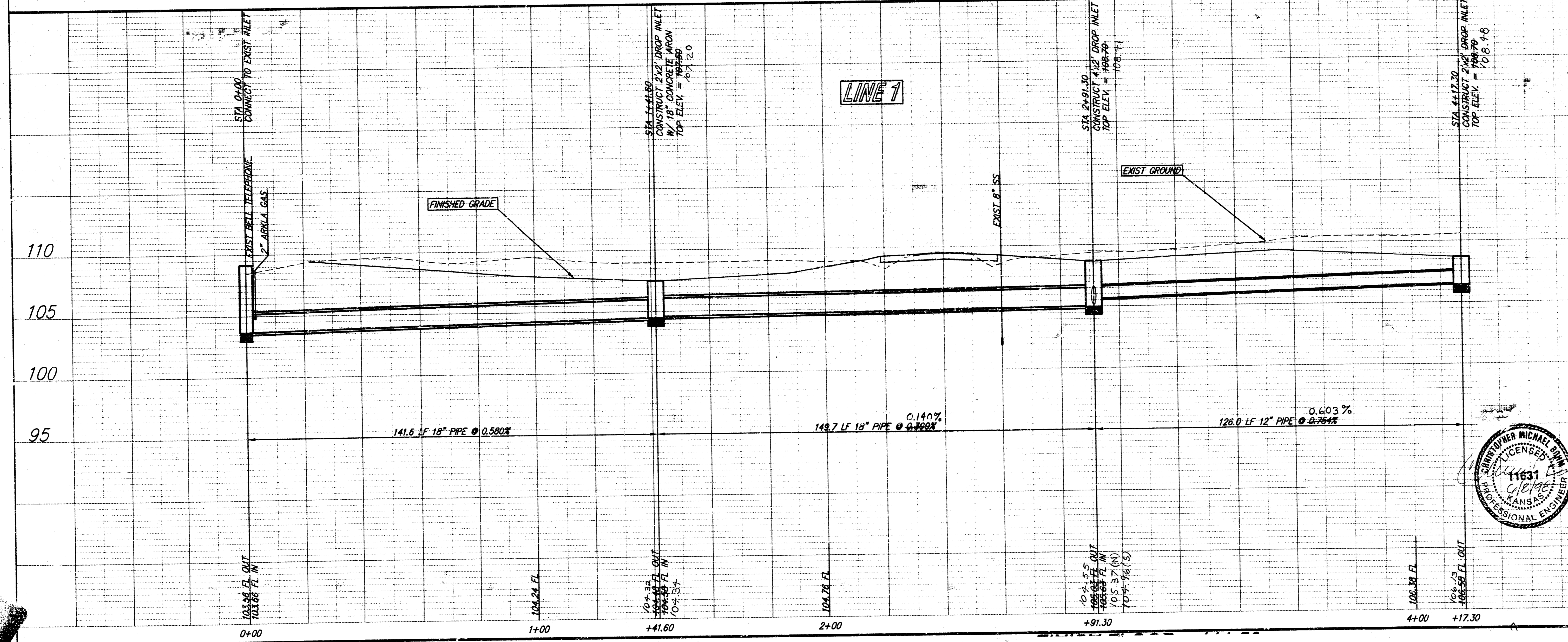


B.M. #1 - C.O.W. BENCH MARK. CONCRETE BASE FOR RAILROAD SIGNAL LIGHT. SOUTH SIDE OF HARRY, 150' WEST OF SHERIDAN. WEST SIDE OF RAILROAD TRACKS. 3' SOUTH OF SOUTH CURB. ELEV. = 112.42

INLET @ STA	AREA (ac.)	C _s	L	Q _s (cfs)	C _{ms}	L _{ms}	Q _{ms} (cfs)
1+41.6 LINE 1	1.48	0.54	4.56	3.64	0.52	7.37	5.67
2+91.3 LINE 1	0.39	0.87	4.56	1.51	0.89	7.37	2.49
4+17.3 LINE 1	0.54	0.87	4.56	2.14	0.89	7.37	3.54
1+04.8 LINE 2	0.68	0.70	4.56	2.17	0.74	7.37	3.71
2+15.9 LINE 2	0.69	0.65	4.56	2.05	0.71	7.37	3.61



SCALE: 1" = 20'
BOOKED
3-23-99
MCS
D-419



APPROVED AS NOTED
BY CITY ENGINEER OF WICHITA

Sanitary Sewers _____
Storm Sewers URH 6/8/98
Driveway Approaches _____
Water Mains _____
Paving _____

NOTE TO CONTRACTORS

Inspection and testing for this project are to be provided by a Licensed Consulting Engineering Firm under contract with the Owner/Developer. Said inspection to be in accordance with the City of Wichita standard construction engineering practices and certified by a Licensed Professional Engineer. No work shall be performed in dedicated easements or public right-of-way by the Contractor without such inspection, nor shall any work be commenced without written authorization by the City Engineer.

AS BUILT 8-17-98

**WSM PROPERTIES ADDITION
LINE 1
WICHITA, KANSAS**

SRB 524 NORTH MAIN WICHITA, KANSAS 67203
316-264-8008 FAX 264-4621
http://www.feist.com/~srb E-Mail: srb@feist.com

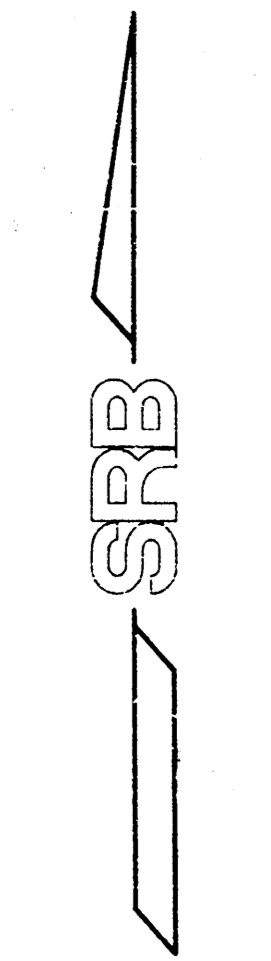
SAVOY, RUGGLES & BOHM, P. A.
ENGINEERING & SURVEYING

PROJECT NUMBER
792 PPS (607861)

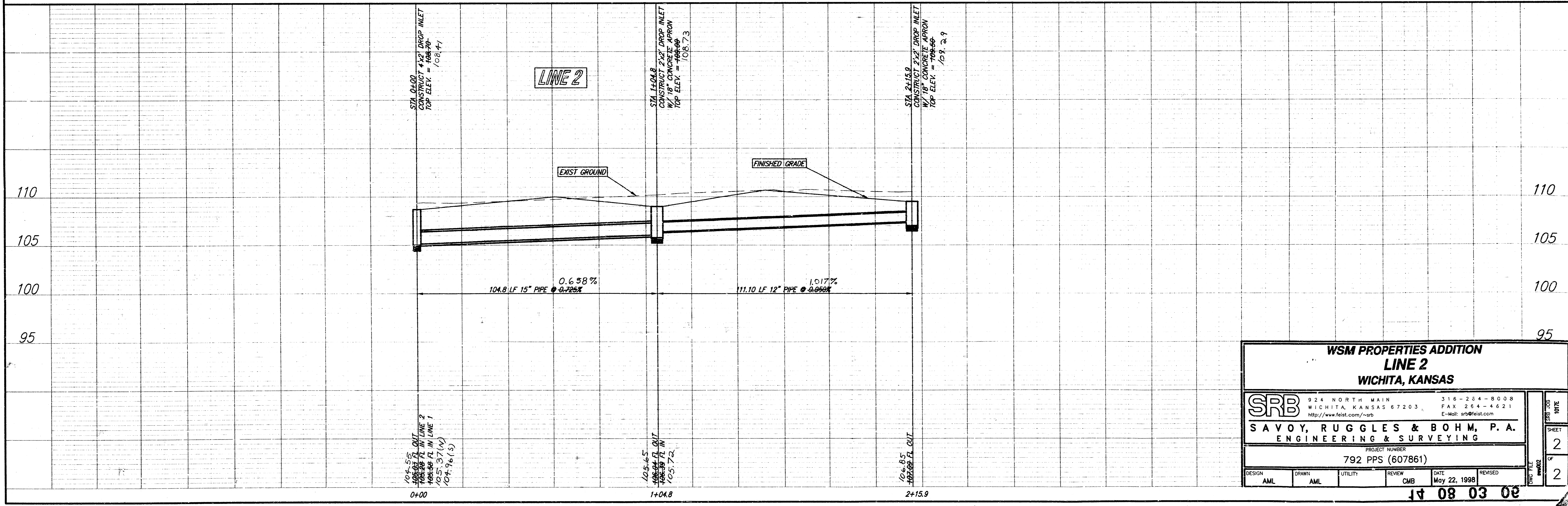
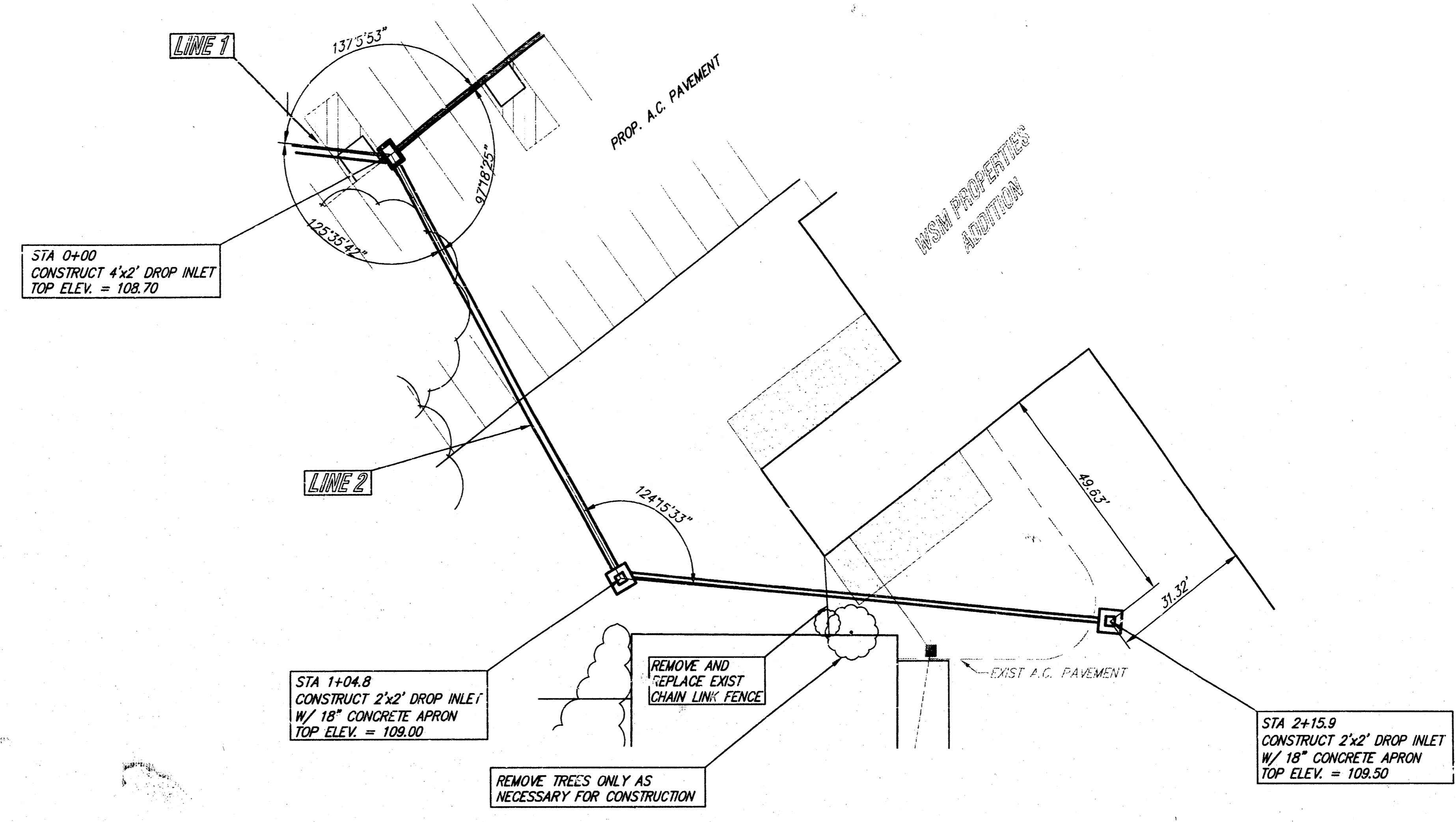
DESIGN: AML DRAWN: AML UTILITY: REVIEW: CMB DATE: May 22, 1998

PROFESSIONAL ENGINEER
MICHAEL BOHM
11631
KANSAS
LICENSED

SHEET 1 OF 2



SCALE: 1" = 20'



WSM PROPERTIES ADDITION LINE 2 WICHITA, KANSAS			
		924 NORTH MAIN 316-264-8008 WICHITA, KANSAS 67203 FAX 264-4621 http://www.feist.com/~srb E-Mail: srb@feist.com	
SAVOY, RUGGLES & BOHM, P.A. ENGINEERING & SURVEYING			
PROJECT NUMBER 792 PPS (607861)			
DESIGN	DRAWN	UTILITY	REVIEW
AML	AML		CMB
		DATE	REVISED
		May 22, 1998	
80 30 80 41			SHEET 2 OF 2