

INDEX OF SHEETS

1. TITLE SHEET
2. PLAN/PROFILE
3. 36" HEADWALL
4. TYPE 1A CURB INLET

PRIVATE STORM SEWER IMPROVEMENTS

IN OAK KNOLL INDUSTRIAL PARK 2ND ADDITION

CITY OF WICHITA PROJECT NO. 809 PPS (607861)

BOOKED
3-22-99
MCS
D-409

PROJECT SURVEY CONTROL

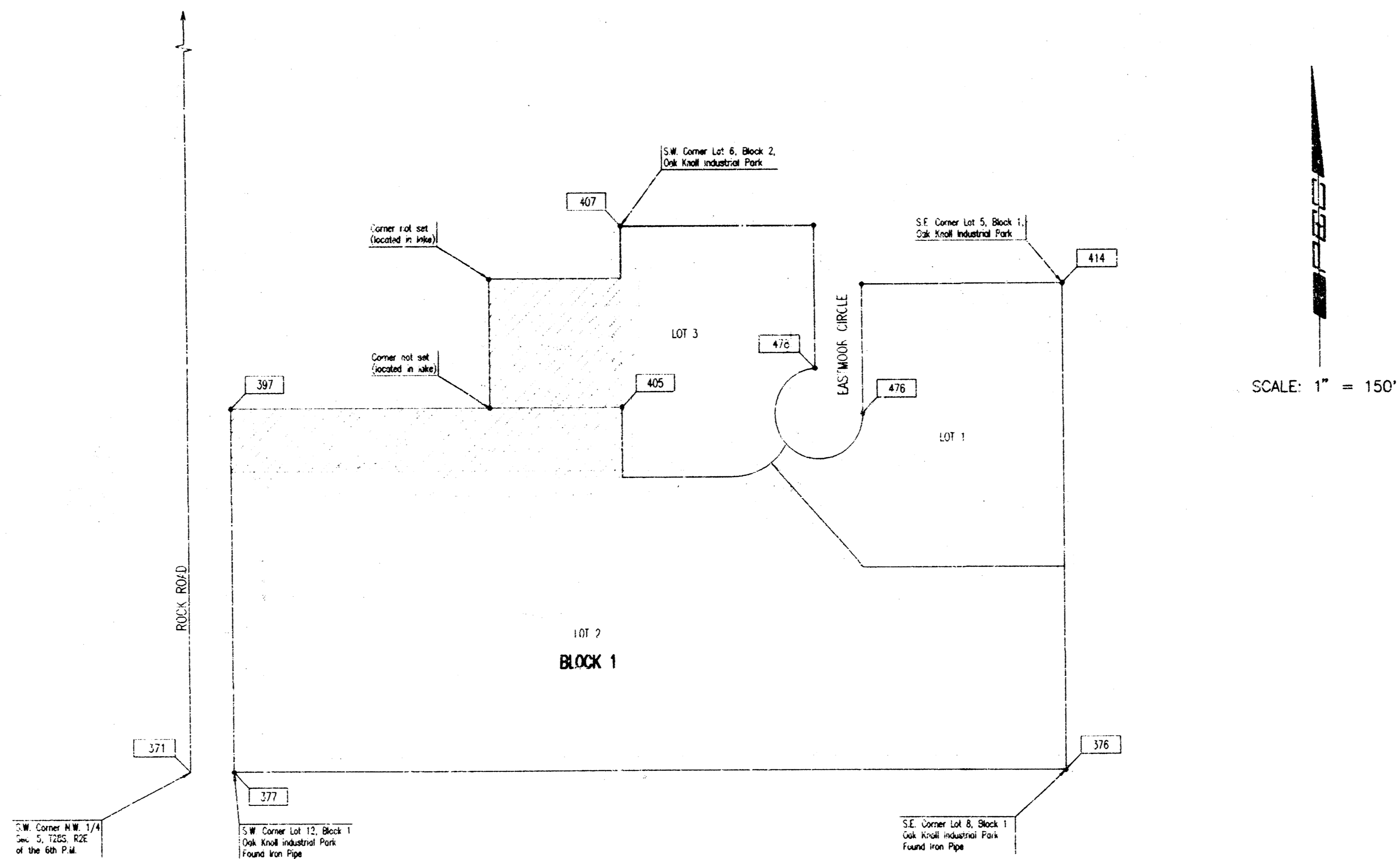
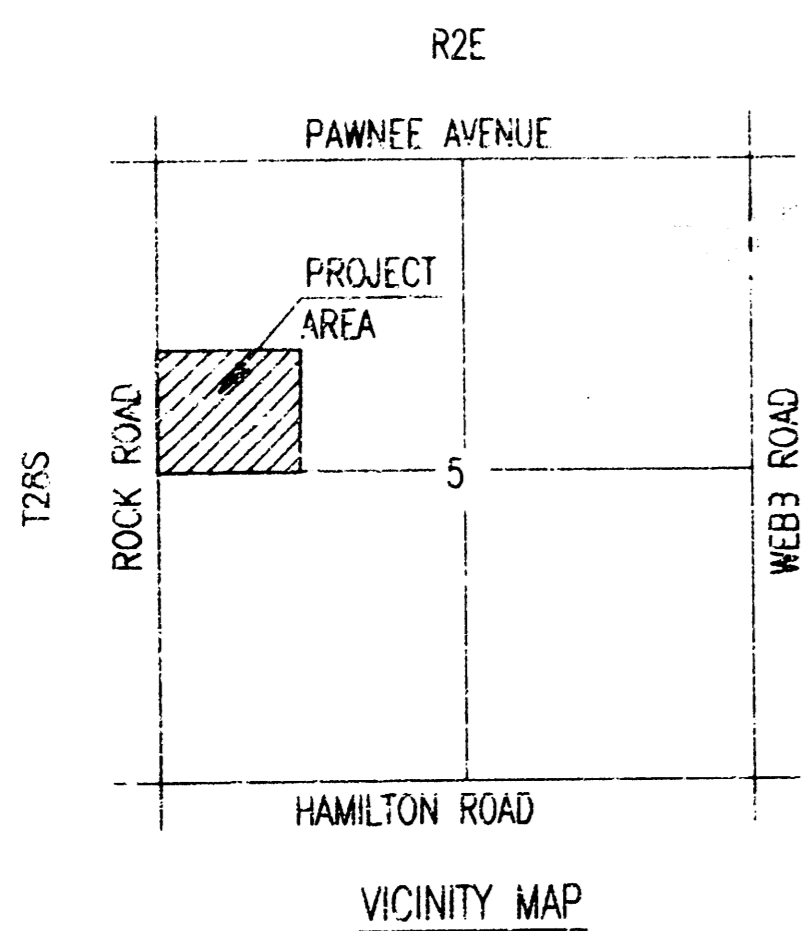
CITY OF WICHITA VERTICAL DATUM

BM30 - CHISELED "a" S.W. CORNER
WEST CURB INLET @ S.E. CORNER
ROCK ROAD AND ARNOLD

ELEV. = 187.71 CITY DATUM

COORDINATE TABLE

	NORTHING	EASTING
PT. 371	344.3954	355.5400
PT. 376	344.3377	1677.7720
PT. 377	344.3926	420.4402
PT. 395	764.3926	419.6117
PT. 396	764.3666	1014.6132
PT. 397	864.3926	419.3906
PT. 405	864.3606	1014.3921
PT. 406	1124.3527	1303.8180
PT. 407	1124.3654	1013.8173
PT. 411	724.3926	419.7001
PT. 413	1029.8462	1374.0050
PT. 414	1040.5161	1676.9985
PT. 474	811.0357	1261.2668
PT. 476	854.8467	1374.4140
PT. 477	854.7030	1369.4142
PT. 478	919.4992	1374.2709
PT. 480	791.1123	1295.9519
PT. 481	724.3594	1180.6212
PT. 482	764.3594	1180.6230
PT. 484	784.4037	1238.2975
PT. 485	835.5165	1677.4473
PT. 496	624.2485	1374.4539
PT. 487	1039.6915	1304.0052
PT. 488	1049.3674	1013.9831
PT. 489	1049.3761	813.9826
PT. 490	864.3754	814.3916



GENERAL NOTES

UNDERGROUND UTILITY SERVICE LINES AND OVERHEAD UTILITY POLE LINES ARE TO BE ADJUSTED AS NECESSARY BY OTHERS PRIOR TO CONSTRUCTION UNLESS THE PLANS SPECIFICALLY CALL FOR THEIR ADJUSTMENT BY THE CONTRACTOR. EXISTING UTILITIES AND THEIR LOCATION, AS SHOWN ON THE PLANS, REPRESENT THE BEST INFORMATION OBTAINABLE FOR DESIGN. LOCATION INFORMATION HAS BEEN OBTAINED FROM THE VARIOUS UTILITY COMPANIES AND IS EITHER FROM COMPANY RECORD DRAWINGS OF COMPANY PROVIDED FIELD LOCATIONS. THE CONTRACTOR WILL BE REQUIRED TO WORK AROUND EXISTING UTILITIES WITHIN THE CONSTRUCTION LIMITS WHICH DO NOT CONFLICT WITH PROPOSED CONSTRUCTION.

RUBBLE FROM THE REMOVAL OF MISCELLANEOUS STRUCTURES SHALL BE DEPOSITED ON SITES TO BE PROVIDED BY THE CONTRACTOR AND APPROVED AS NOTED BELOW.

ALL DISPOSAL SITES MUST BE APPROVED BY THE KANSAS DEPARTMENT OF HEALTH AND ENVIRONMENT. MATERIAL EITHER STOCKPILED OR DEPOSITED IN A FLOOD PLAIN WOULD REQUIRE A KANSAS STATE BOARD OF AGRICULTURE PERMIT. ANY MATERIAL DUMPED IN WATERS OF THE UNITED STATES OR WETLANDS IS SUBJECT TO THE PLANS OF ENGINEERS PERMITTED REGULATIONS. ANY MATERIAL BURIED OR STOCKPILED BEYOND APPROVED CONSTRUCTION LIMITS WOULD REQUIRE ADDITIONAL ARCHAEOLOGICAL INVESTIGATIONS UNLESS BURIED IN A PREVIOUSLY APPROVED BORROW LOCATION.

CONTRACTOR SHALL SATISFY HIMSELF OF SURFACE AND SUBSURFACE CONDITIONS PRIOR TO BIDDING.

CONTRACTOR SHALL PROVIDE A MINIMUM FORTY-EIGHT (48) HOUR ADVANCE NOTICE (EXCLUDING WEEKENDS AND HOLIDAYS) PRIOR TO BEGINNING ANY EXCAVATION TO KANSAS ONE-CALL SYSTEM. A UTILITY LOCATION SERVICE AT (316) 867-4411. REQUEST THE FOLLOWING UTILITY COMPANIES TO LOCATE ALL EXISTING LINES WITHIN THE PROJECT AREA: PEOPLES NATURAL GAS, K.G.E. ELECTRIC, SOUTHWESTERN BELL TELEPHONE, MULTIMEDIA CABLE VISION, CITY OF WICHITA SEWER MAINTENANCE AND CITY OF WICHITA WATER DEPARTMENT.

THE CONTRACTOR SHALL BE RESPONSIBLE FOR PRESERVING PROPERTY IRONS. THE CONTRACTOR WILL BE REQUIRED TO RE-ESTABLISH ANY PROPERTY IRONS WHICH ARE DAMAGED OR DESTROYED BY HIS CONSTRUCTION OPERATIONS. SUCH IRONS SHALL BE RE-ESTABLISHED BY A LICENSED LAND SURVEYOR IN ACCORDANCE WITH STATE LAWS.

THE WATER DEPARTMENT SHALL FIELD LOCATE WATER VALVES ONE TIME DURING CONSTRUCTION WHEN REQUESTED BY THE CONTRACTOR. IT SHALL BE THE CONTRACTOR'S RESPONSIBILITY TO PRESERVE SUCH FIELD LOCATIONS DURING THE CONSTRUCTION PROCESS. WATER VALVES, WATER VALVE BOWS OR FIRE HYDRANTS DAMAGED DURING CONSTRUCTION SHALL BE REPAIRED BY THE CONTRACTOR AT HIS OWN EXPENSE.

THE CONTRACTOR SHALL TEMPORARILY SEED AND MULCH ALL STREET RIGHTS-OF-WAY, EASEMENTS GRADED, AND OTHER AREAS DISTURBED BY HIS OPERATIONS WITH ANNUAL RYE SEED AT THE RATE OF 4LBS./1000 S.F. AND MULCH WITH HAY AT THE RATE OF 90LBS./1000 S.F.

CONTRACTOR SHALL COORDINATE HIS WORK WITH WATER LINE CONTRACTOR (C.O.W. PROJ. NO. XXXXX), SANITARY SEWER CONTRACTOR (C.O.W. PROJ. NO. XXXXX), AND PAVING CONTRACTOR.



APPROVED AS NOTED
BY CITY ENGINEER OF WICHITA

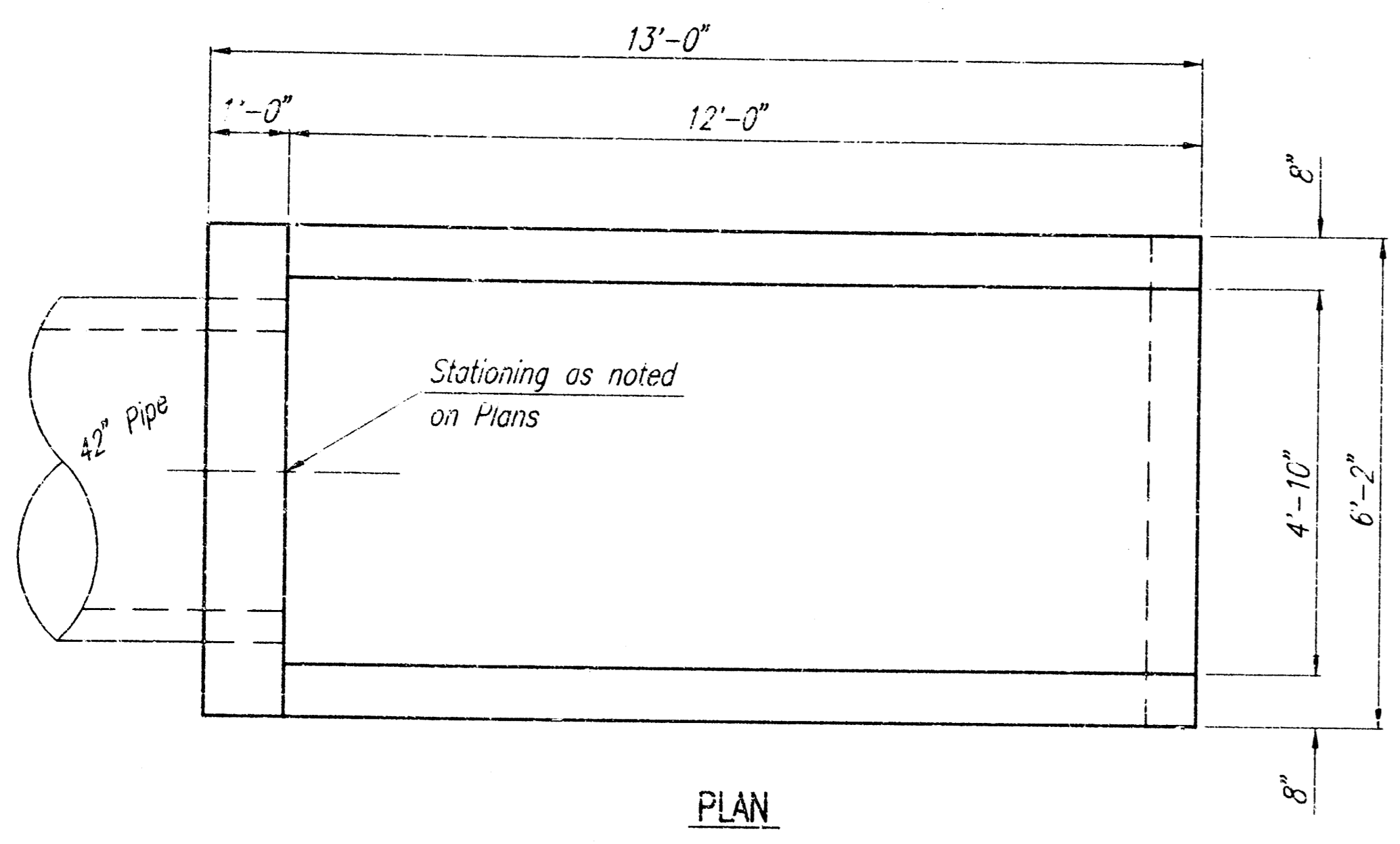
SANITARY SEWERS _____
STORM SEWERS VRH 6/2/98
DRIVEWAY APPROACHES _____
WATER MAINS _____
PAVING _____

NOTE TO CONTRACTOR

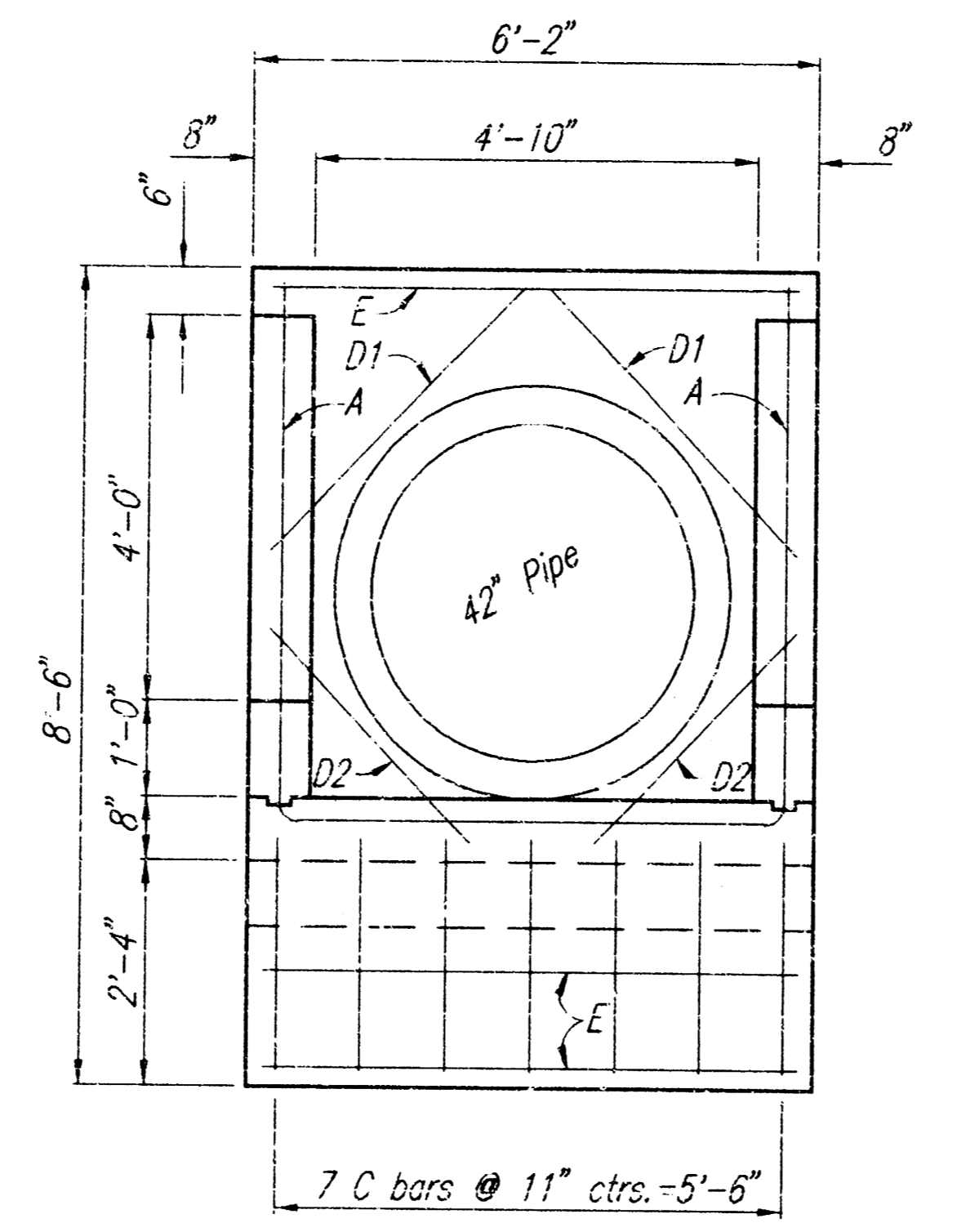
INSPECTION AND TESTING FOR THIS PROJECT IS TO BE PROVIDED BY A LICENSED CONSULTING ENGINEERING FIRM UNDER CONTRACT WITH THE OWNER/DEVELOPER. SAID INSPECTION TO BE IN ACCORDANCE WITH THE CITY OF WICHITA STANDARD CONSTRUCTION ENGINEERING PRACTICES AND CERTIFIED BY A LICENSED PROFESSIONAL ENGINEER. NO WORK SHALL BE PERFORMED IN DEDICATED EASEMENTS OR PUBLIC RIGHT-OF-WAY BY THE CONTRACTOR WITHOUT SUCH INSPECTION NOR SHALL ANY WORK BE COMMENCED IN DEDICATED EASEMENTS OR PUBLIC RIGHT-OF-WAY WITHOUT WRITTEN AUTHORIZATION BY THE CITY ENGINEER.

MAY 1998

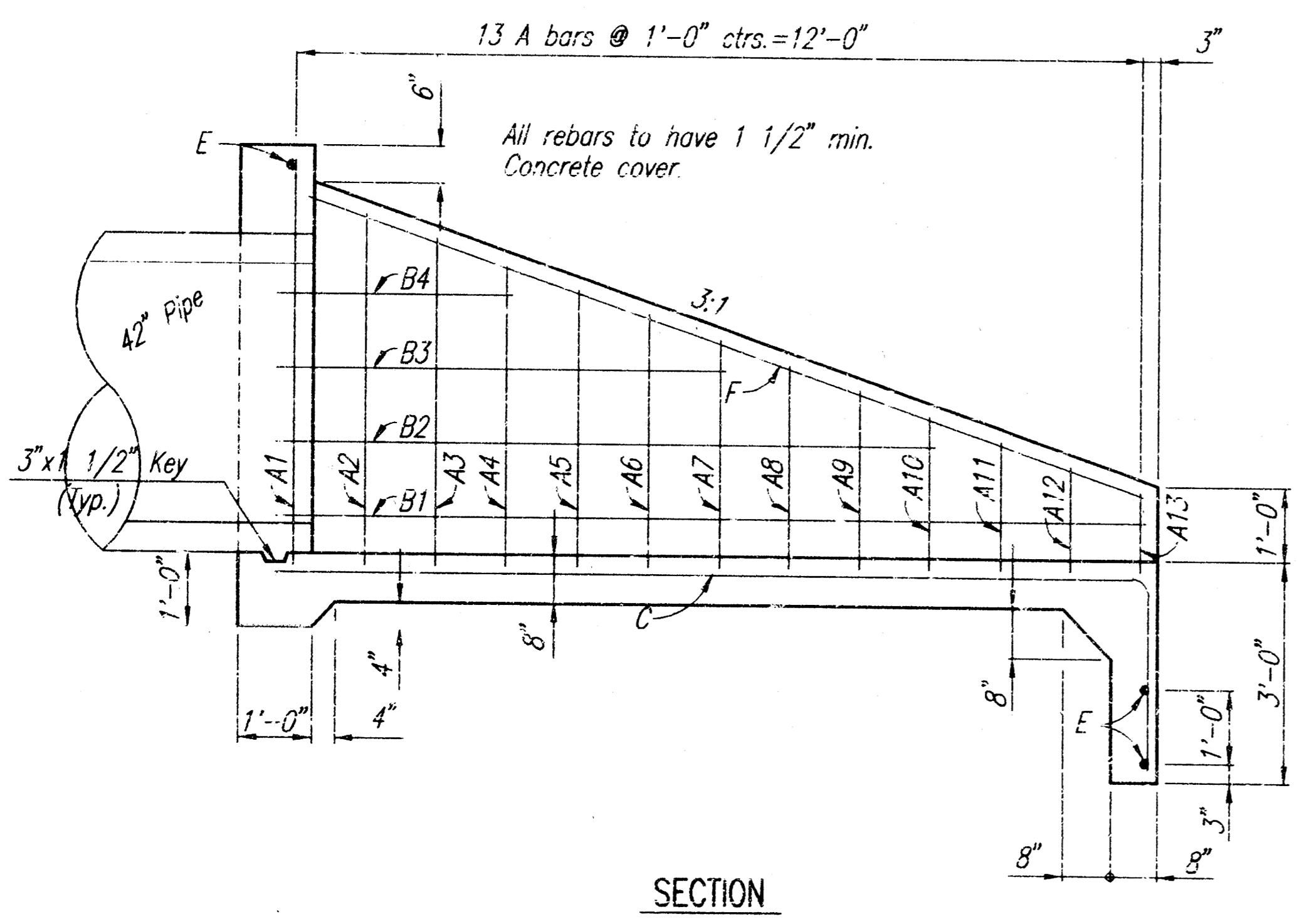
PLANS PREPARED BY
PROFESSIONAL ENGINEERING CONSULTANTS, P.A.
ENGINEERS
WICHITA, KANSAS



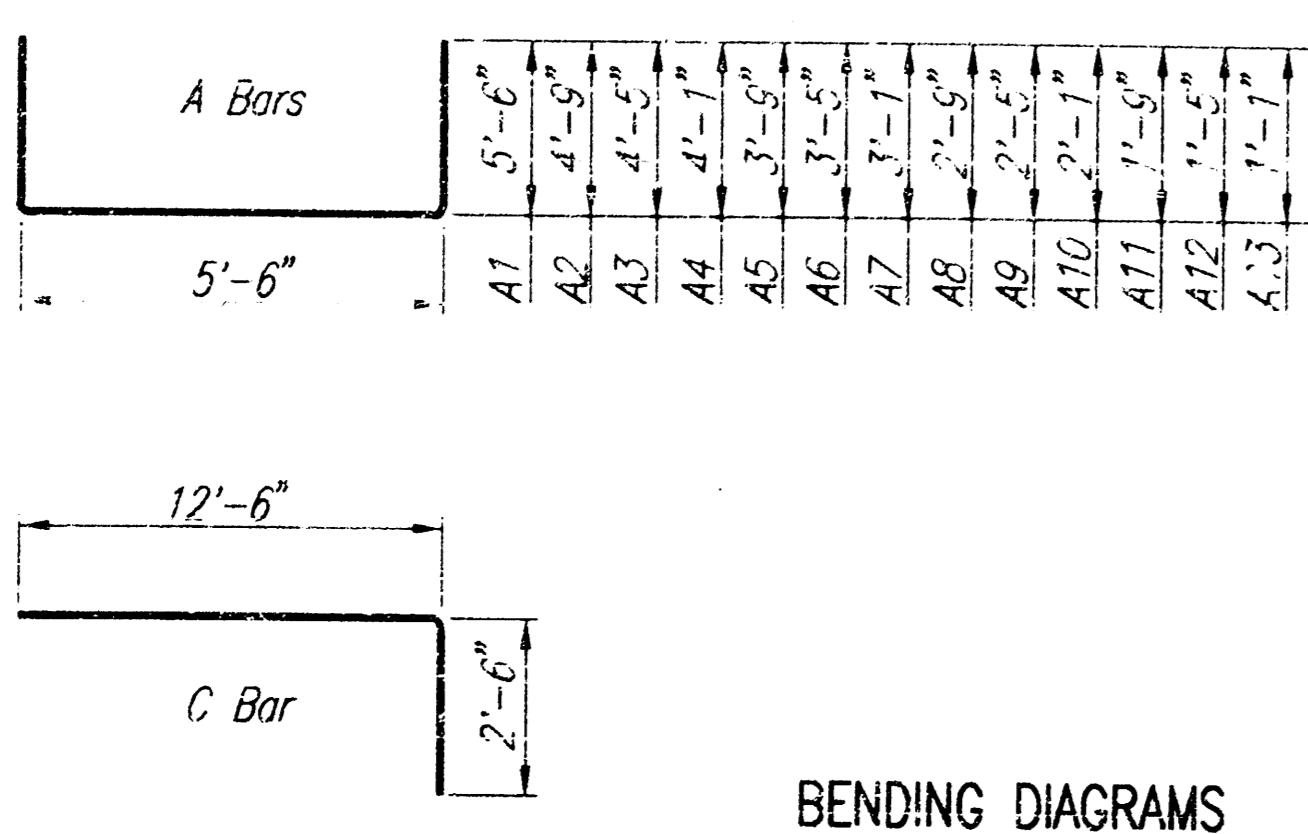
PLAN



FRONT



SECTION

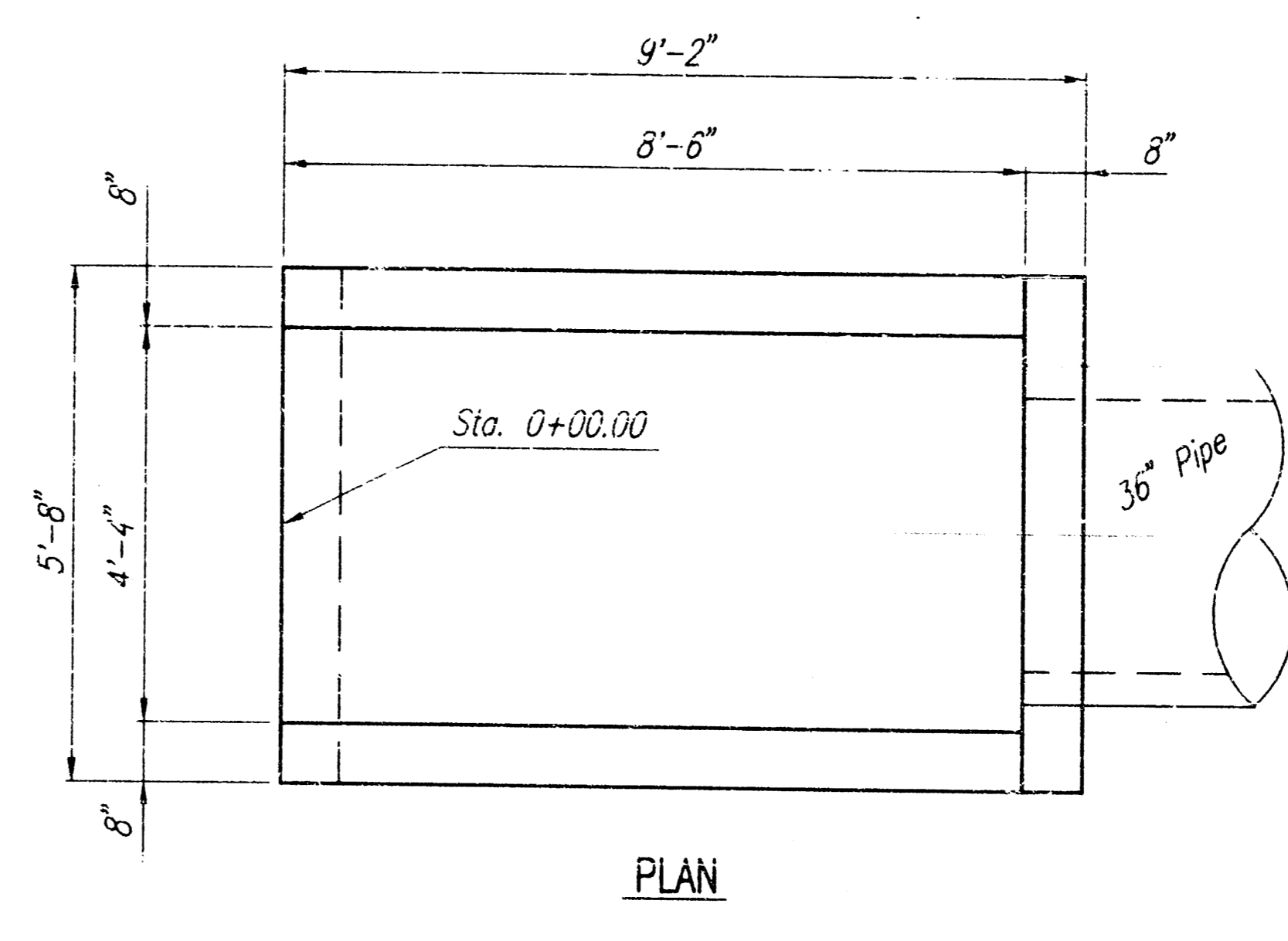


BENDING DIAGRAMS

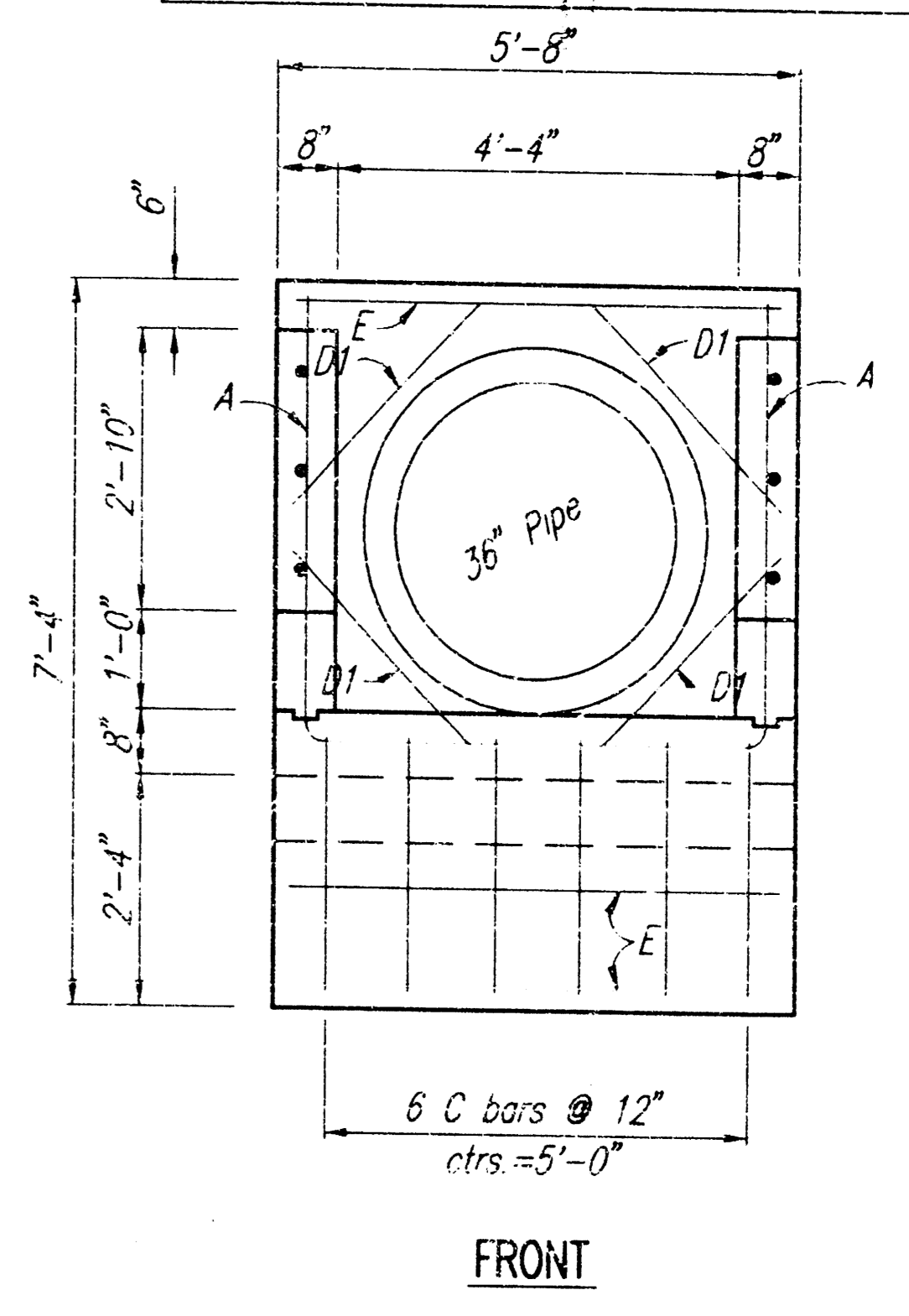
42" HEADWALL

RE-BAR SCHEDULE #				
Mark	Shape	No.	Length	Weight
A1		1	16'-6"	11.02
A2		1	15'-0"	10.02
A3		1	14'-4"	9.57
A4		1	13'-8"	9.13
A5		1	13'-0"	8.68
A6		1	12'-4"	8.24
A7		1	11'-8"	7.79
A8		1	11'-0"	7.35
A9		1	10'-4"	6.90
A10		1	9'-8"	6.46
A11		1	9'-0"	6.01
A12		1	8'-4"	5.57
A13		1	7'-8"	5.12
B1		2	12'-7"	16.82
B2		2	9'-7"	12.80
B3		2	5'-7"	7.46
B4		2	3'-7"	4.79
C		7	15'-0"	70.14
D1		2	3'-8"	4.90
D2		2	2'-4"	3.12
E		3	5'-8"	11.36
F		2	13'-0"	17.37
Total Rebars			251	Lbs.
Concrete			4.98	C.Y.

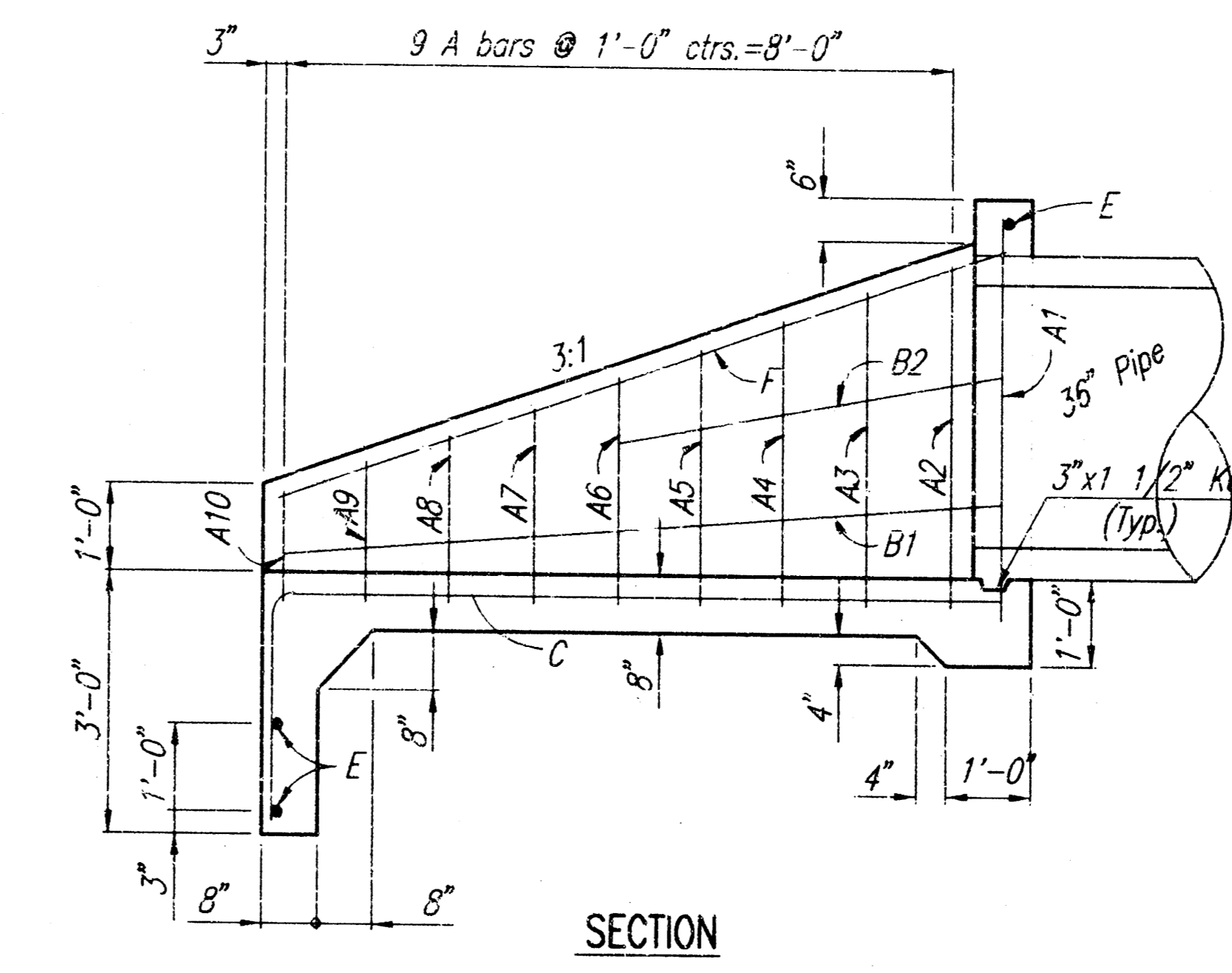
All Concrete Reinforcement to be #4 bars.
For Information Only



PLAN



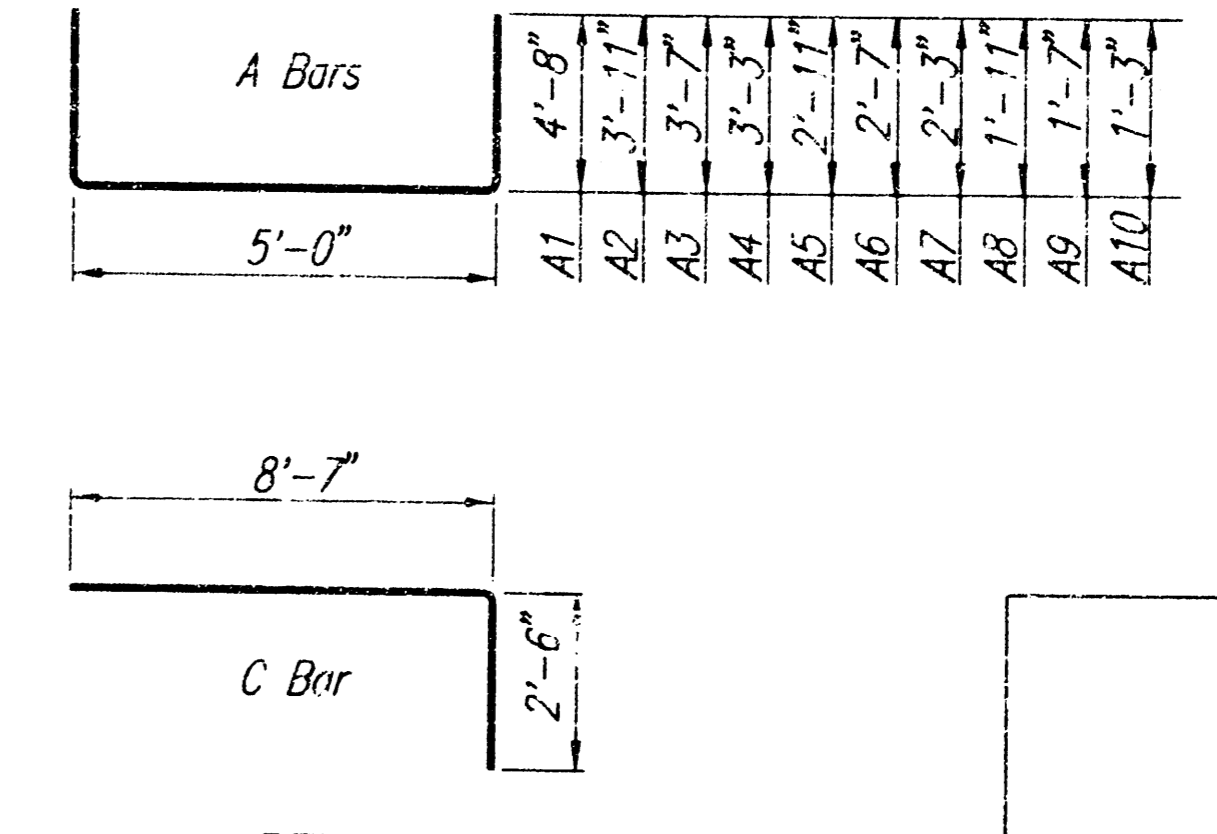
FRONT



SECTION

RE-BAR SCHEDULE #				
Mark	Shape	No.	Length	Weight
A1		1	14'-4"	9.57
A2		1	12'-10"	8.57
A3		1	12'-2"	8.13
A4		1	11'-6"	7.68
A5		1	10'-10"	7.24
A6		1	10'-2"	6.79
A7		1	9'-6"	6.35
A8		1	8'-10"	5.90
A9		1	8'-2"	5.46
A10		1	7'-6"	5.01
B1		2	8'-8"	11.58
B2		2	4'-8"	6.24
C		6	11'-1"	44.42
D1		4	3'-0"	8.02
E		3	5'-2"	10.35
F		2	9'-0"	12.02
Total Rebars			163	Lbs.
Concrete			3.08	C.Y.

All Concrete Reinforcement to be #4 bars.
For Information Only



BENDING DIAGRAMS

36" HEADWALL

CONCRETE HEADWALL NOTES

Concrete: Bevel all exposed edges with a 1/4" triangular mousing or finish with an approved edging tool. Concrete shall be as per City of Wichita Standard Specifications for concrete paving mix except that it shall have a minimum 28 day compressive strength of 4,000 p.s.i. All pipes shall be flush cut prior to being cast into the headwall.

Reinforcing Steel: All dimensions relative to reinforcing steel are to centerline of bar unless otherwise noted. All reinforcing steel shall conform to A.S.T.M. designation A615 Grade 60 and shall be epoxy coated. All clearances shall be 2" unless other noted.

Payment: A deduction in concrete quantities has been made for the pipe opening. The "Headwalls (36") (Reinforced Concrete)", and "Headwall (42") (Reinforced Concrete)", shall be paid for at the unit price bid per each in place including concrete, reinforcing steel, excavation and all other miscellaneous materials, labor, tools, equipment, and incidentals necessary to complete the work. Quantities shown are for information only.

PROJECT NO.	SHEET NO.	TOTAL SHEETS
	3	4

OAK KNOLL INDUSTRIAL PARK 2ND ADDITION

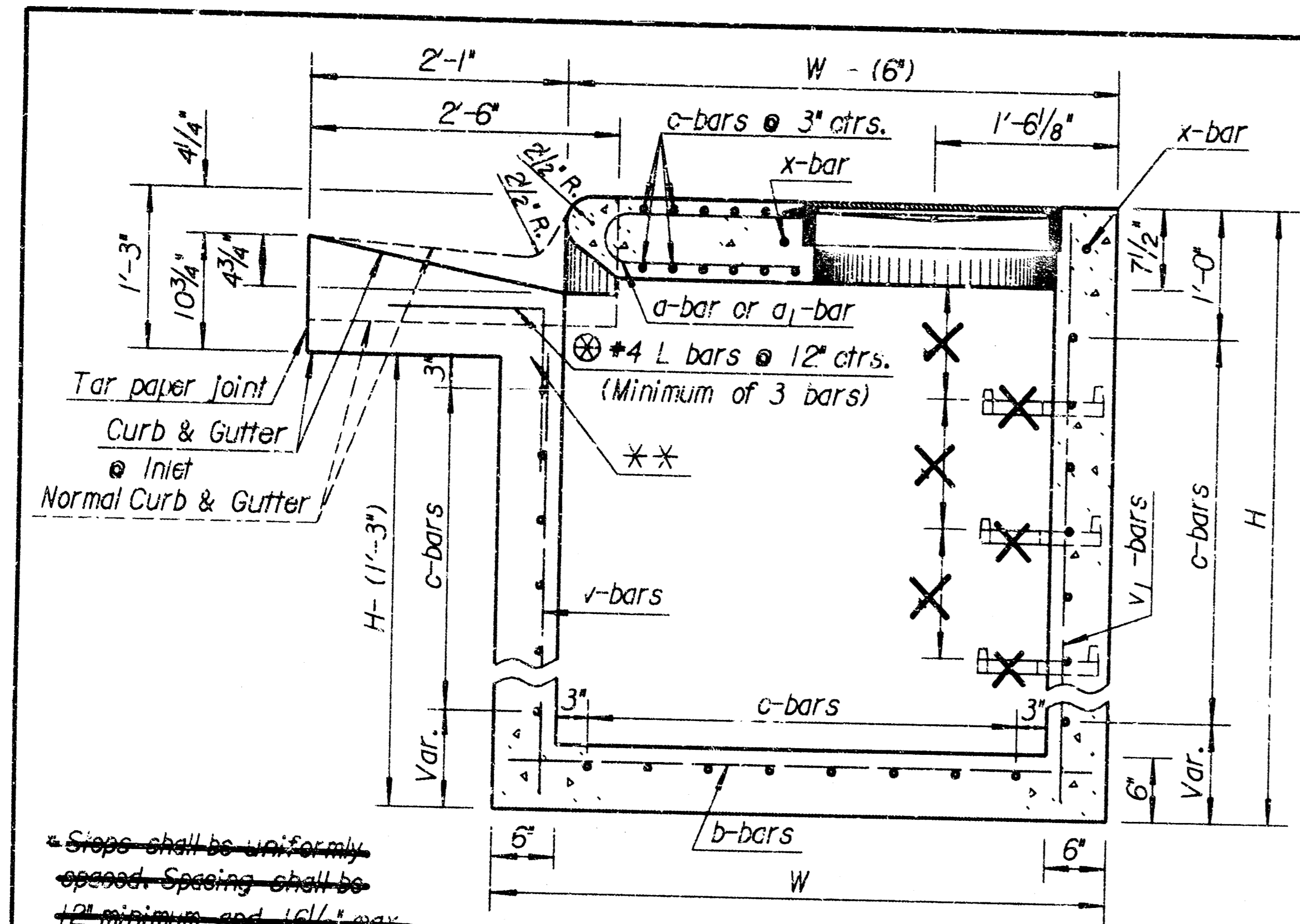
36" AND 42" HEADWALL DETAILS

PROFESSIONAL ENGINEERING CONSULTANTS, P.A.
ENGINEERS
WICHITA, KANSAS

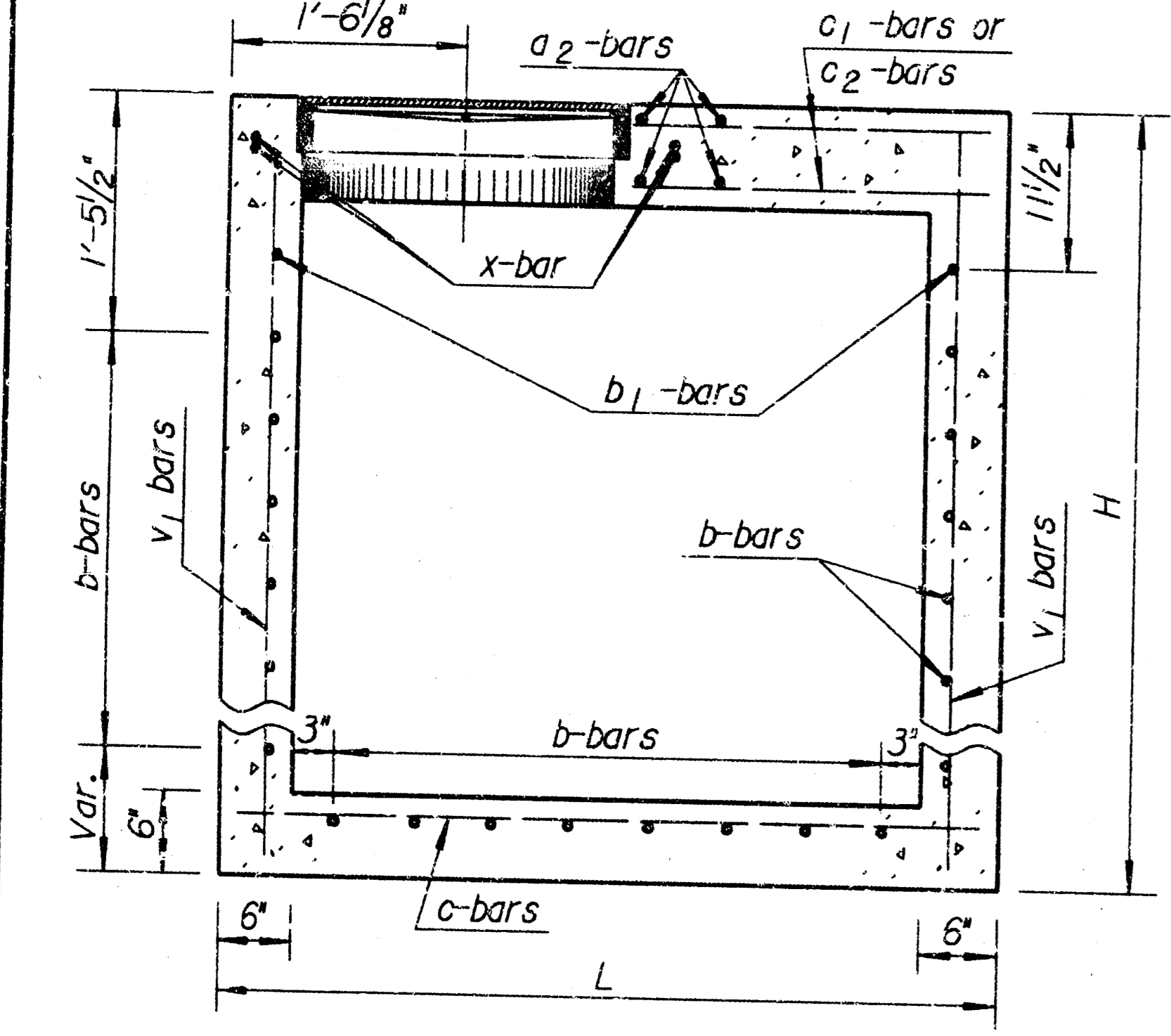
Designed by	BER, GDD	Checked by	
Drawn by	DFP	Date	June 04, 1998
		Job No.	98263

F:\1998\05\03\DWG\REC\MHC\B-42.DWG Thu Jun 04 07:11:15 1998

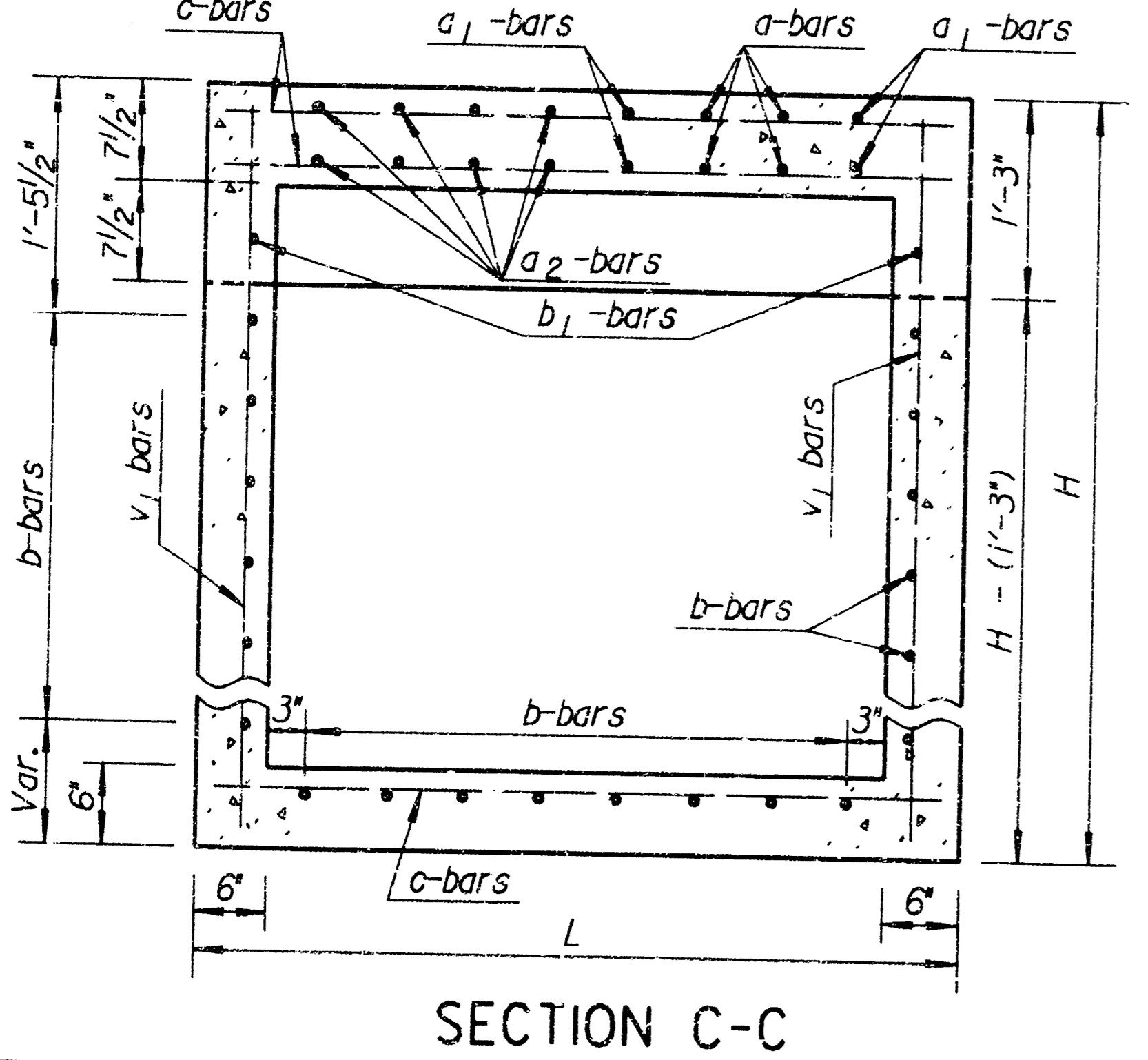
FHWA REGION NO.	STATE	PROJECT NO.	YEAR	SHEET NO.	TOTAL SHEETS
7	KANSAS		1998	4	4



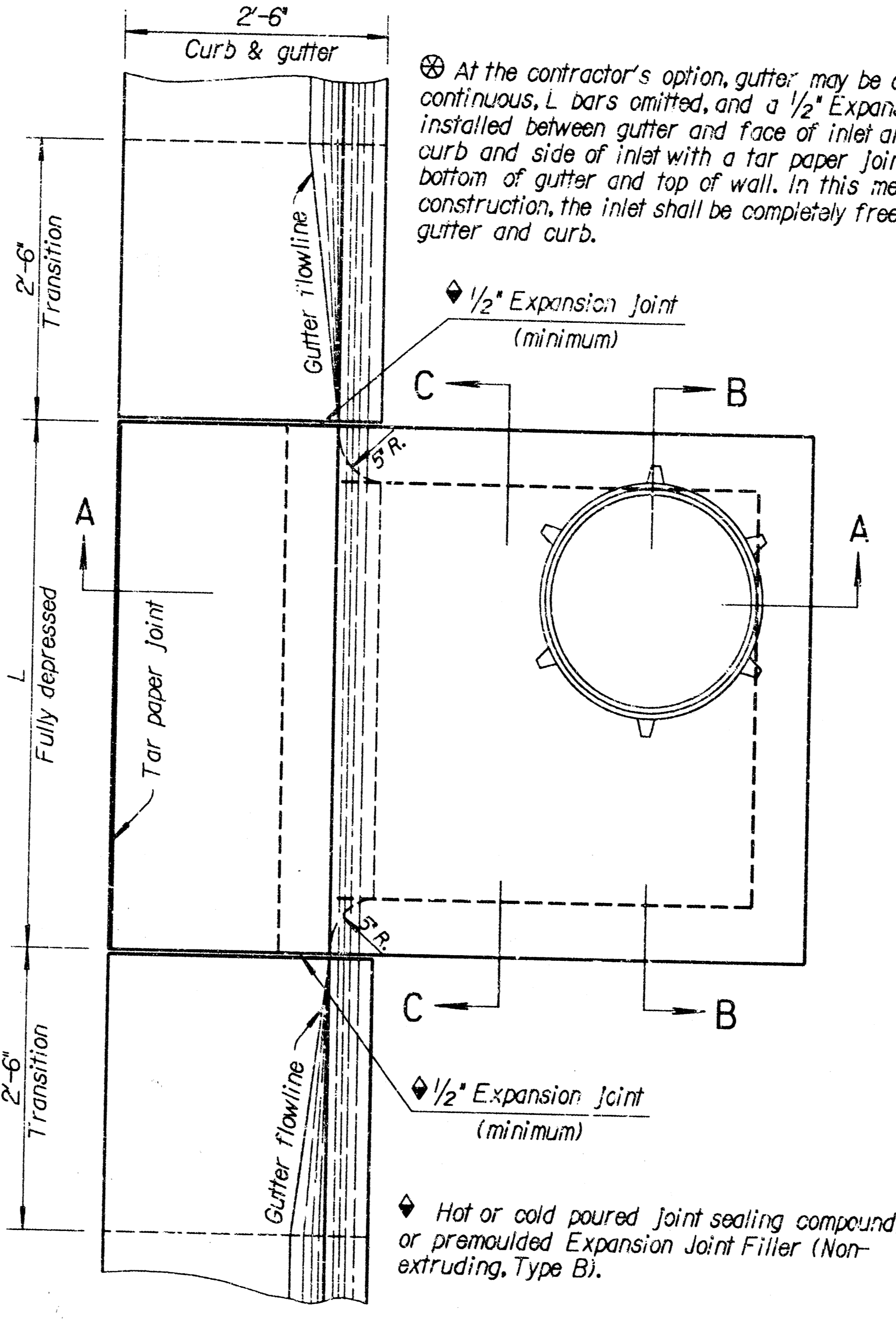
SECTION A-A



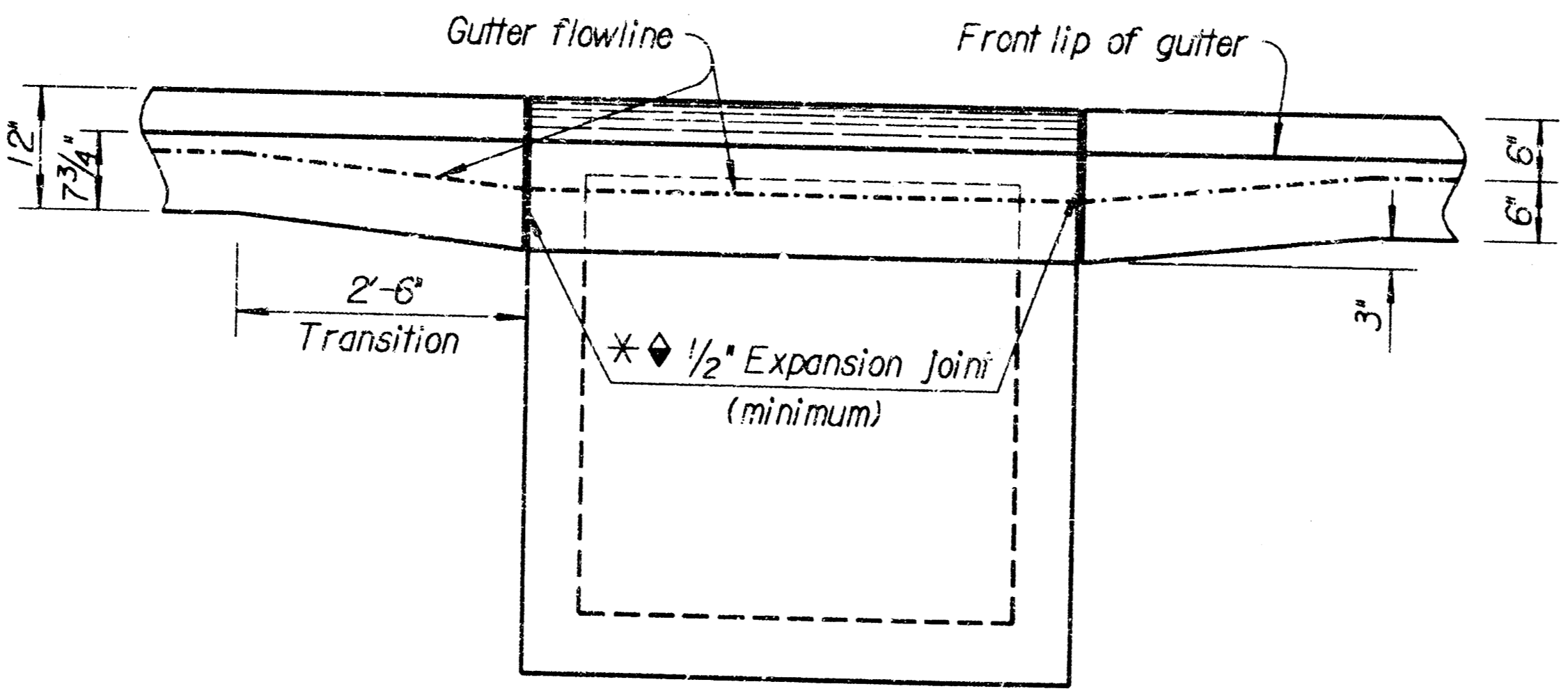
SECTION B-B



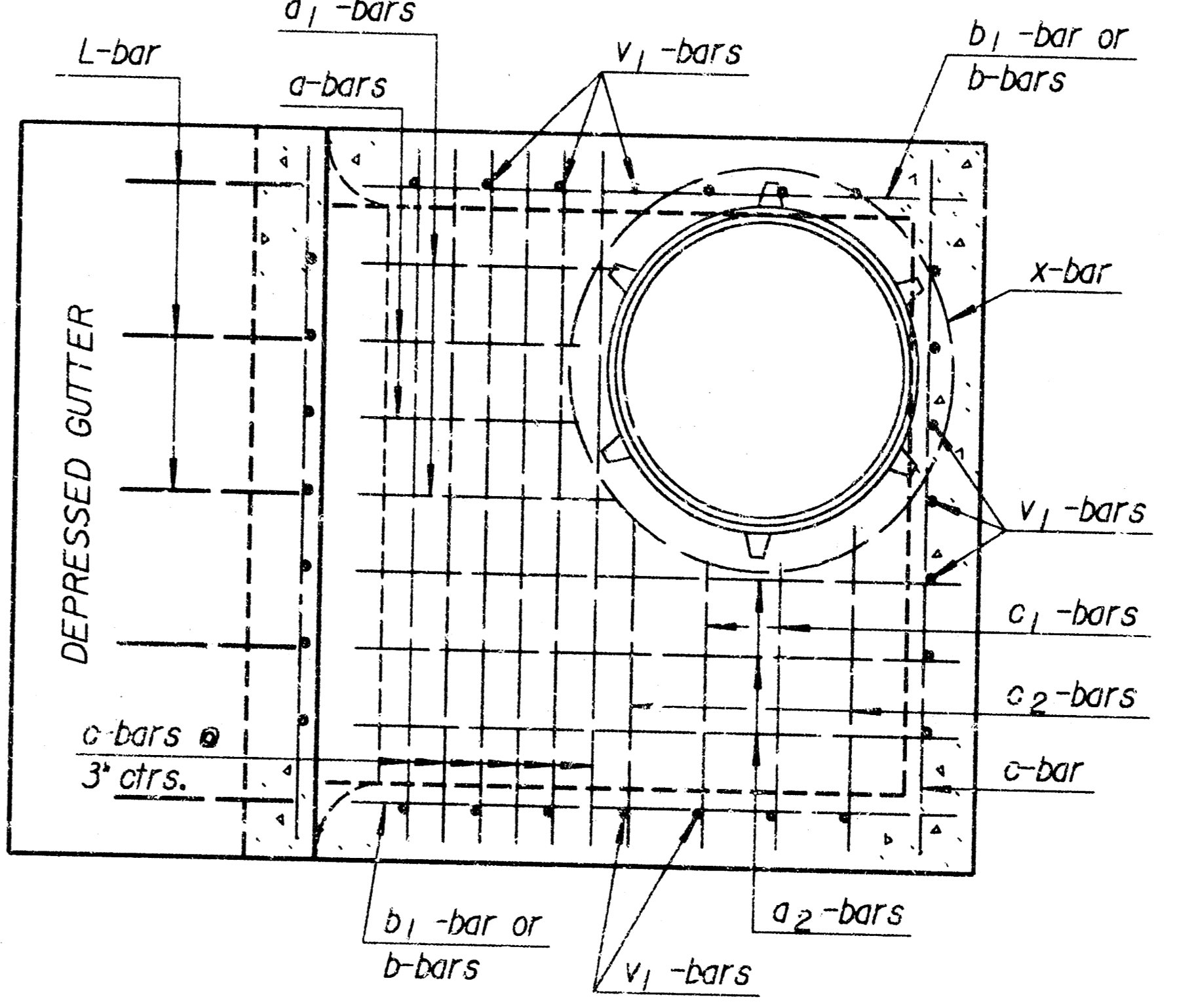
SECTION C-C



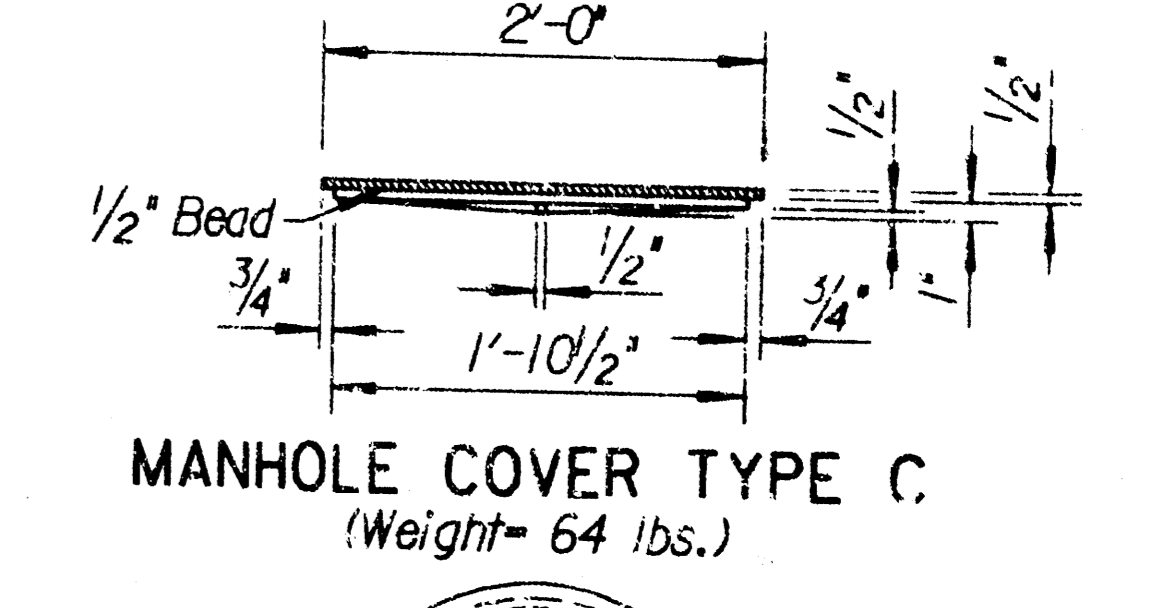
PLAN



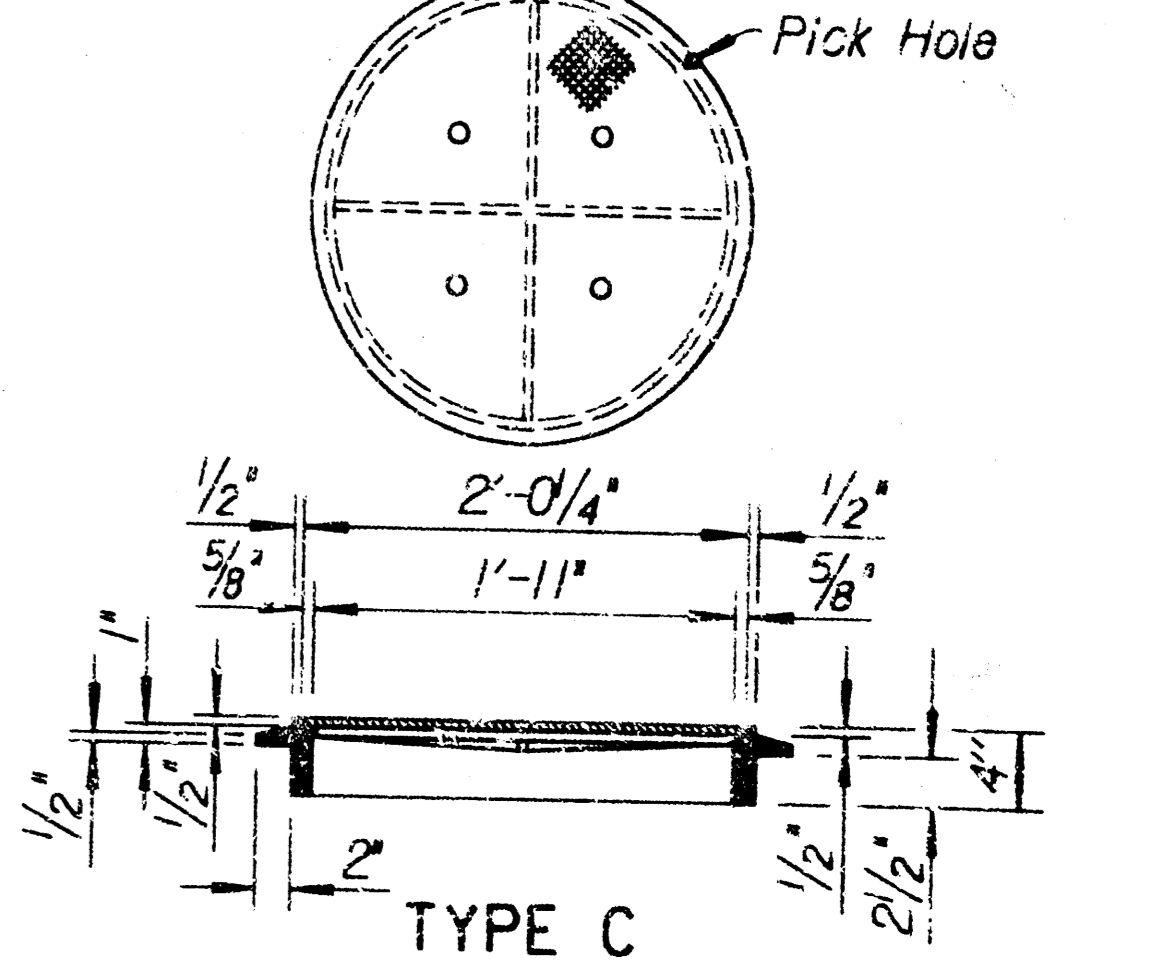
ELEVATION



Reinforcing Steel Top View



MANHOLE COVER TYPE C (Weight = 64 lbs.)



MANHOLE RING (Weight = 53 lbs.)

NOTE: All manhole castings are cast iron. Weight of castings includes no allowance for fillets and overruns.

* LIGHT TYPE MANHOLE COVER & RING
* Rings with four equally spaced lugs will be permitted.

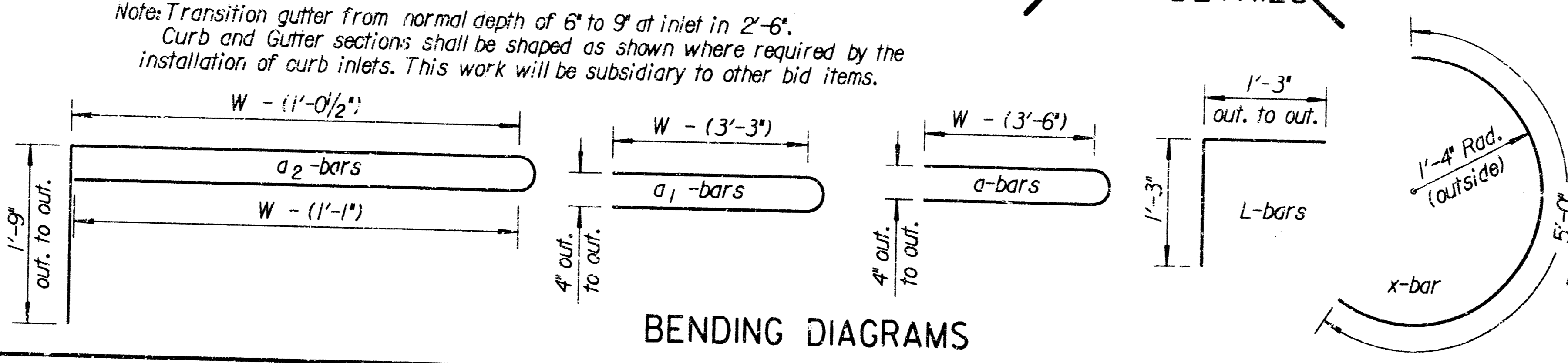
NO.	DATE	REVISIONS	BY	APP'D
5	12-11-97	Revised step spacing	R.J.S.	J.C.B.
4	3-20-96	Added reinforcement note	R.J.S.	J.C.B.
3	12-8-94	Added misc. notes	R.J.S.	J.C.B.

KANSAS DEPARTMENT OF TRANSPORTATION

TYPE 22 CURB INLET

RDC-46

DESIGNED	2-2-98	APP'D	James C. Brewer
TRACED		QUANTITIES	Traced
DESIGN CK.		DETAIL CK.	Trace



BENDING DIAGRAMS

Note: Reinforcing steel for L bars is not included in the steel quantity and is subsidiary to the other inlet items.

Drawn By: J.S. JAMES
Checked By: J.S. JAMES
Date: 12-11-97