

GENERAL NOTES

- Rubble from the removal of miscellaneous structures and excess excavation which is to be wasted shall be disposed of on sites to be provided by the Contractor. These sites shall be approved by the Engineer as to suitability, appearance and site location. Locations that, in the opinion of the Engineer, will leave an unsightly appearance will not be approved.
- All disposal sites must be approved by the Kansas Department of Health and Environment. Material either stockpiled or disposed of in a flood plain would require a Kansas State Board of Agriculture permit. Any material dumped in waters of the United States or wetlands is subject to U.S. Corps permitting regulations. Any material buried or stockpiled beyond approved of Engineers construction limits would require additional archeological investigations unless buried in a previously approved borrow location.
- The Contractor shall notify pipeline companies at least 24 hours in advance of any work being performed across and/or adjacent to pipelines.
- Trees and shrubs in public right-of-way which are in direct conflict with proposed new construction shall be removed by the Contractor with the Engineer's approval. Trees and shrubs which are not in direct conflict with proposed new construction shall be saved and protected from damage.
- The Contractor shall give all property owners and/or tenants of developed property directly abutting the construction of this project a minimum of ten (10) days advance notice prior to start of construction.
- The Contractor shall be responsible for preserving property irons. The Contractor will be required to re-establish any property irons which are damaged or destroyed by his construction operations. Such irons shall be re-established by a licensed land surveyor in accordance with state laws.
- Contractor will be required to provide a minimum advance notice of twenty-four (24) hours to utility companies prior to starting any excavation as follows:

Kansas One-Cull	687-2470
-----------------	----------
- The Contractor must notify the following in case of an emergency:

Cablevision	262-4270 or 263-2061
Kansas Gas Service	383-8650
K.G.&E.	383-8600
Peoples Natural Gas Company	942-8350 or 263-8161
Southwestern Bell Telephone Company	1-51-2811
City of Wichita Water Department	268-4908
City of Wichita Sewer Maintenance	268-4071
- The excavated portion of the levee must be reconstructed using similar materials and compacted to at least 95 percent of Standard Proctor Density.
- The portion of the trench for the storm water drainage pipe under the levee must be backfilled with impervious soil and compacted to at least 95 percent of Standard Proctor Density.
- All disturbed areas must be graded, seeded with Fescue Blend Grass at a rate of 300 lbs/acre, and mulched to prevent erosion.

STORM WATER SEWER TO SERVE R.L. HAYES 2ND ADDITION PROJECT NO. 821-PPS INDEX CODE 607861

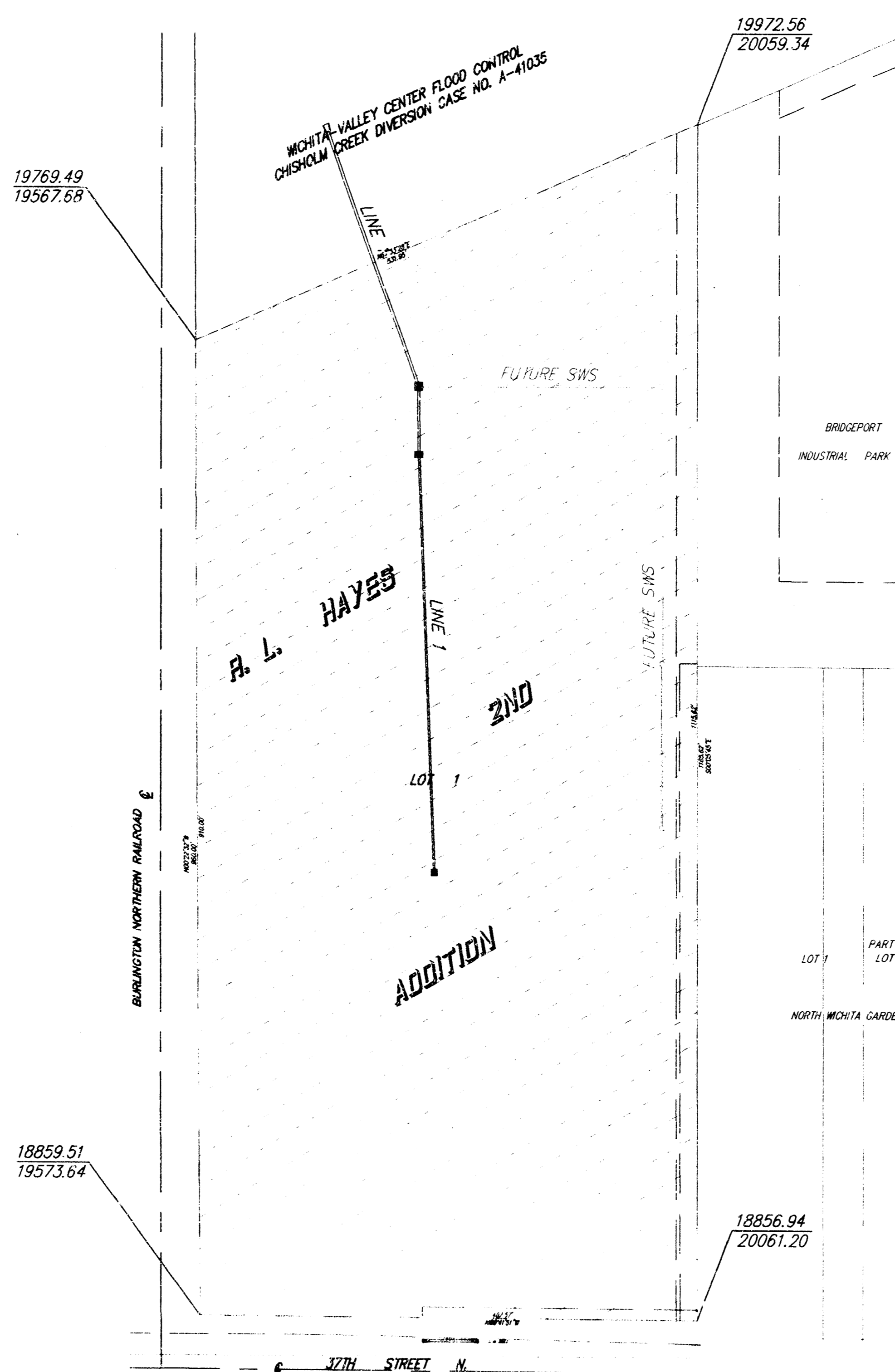
BENCH MARKS

BENCHMARKS:
City of Wichita Bench Mark. Conc. base for
Railroad Signal, south side 37th St. N.
19.6' south of ctr. line 37th St. and 13.6'
west of west rail of R.R.
ELEV. = 1324.16 (NGVD)

Top of iron in thimble at S.E. Corner SW1/4
ELEV. = 1323.90 (NGVD)

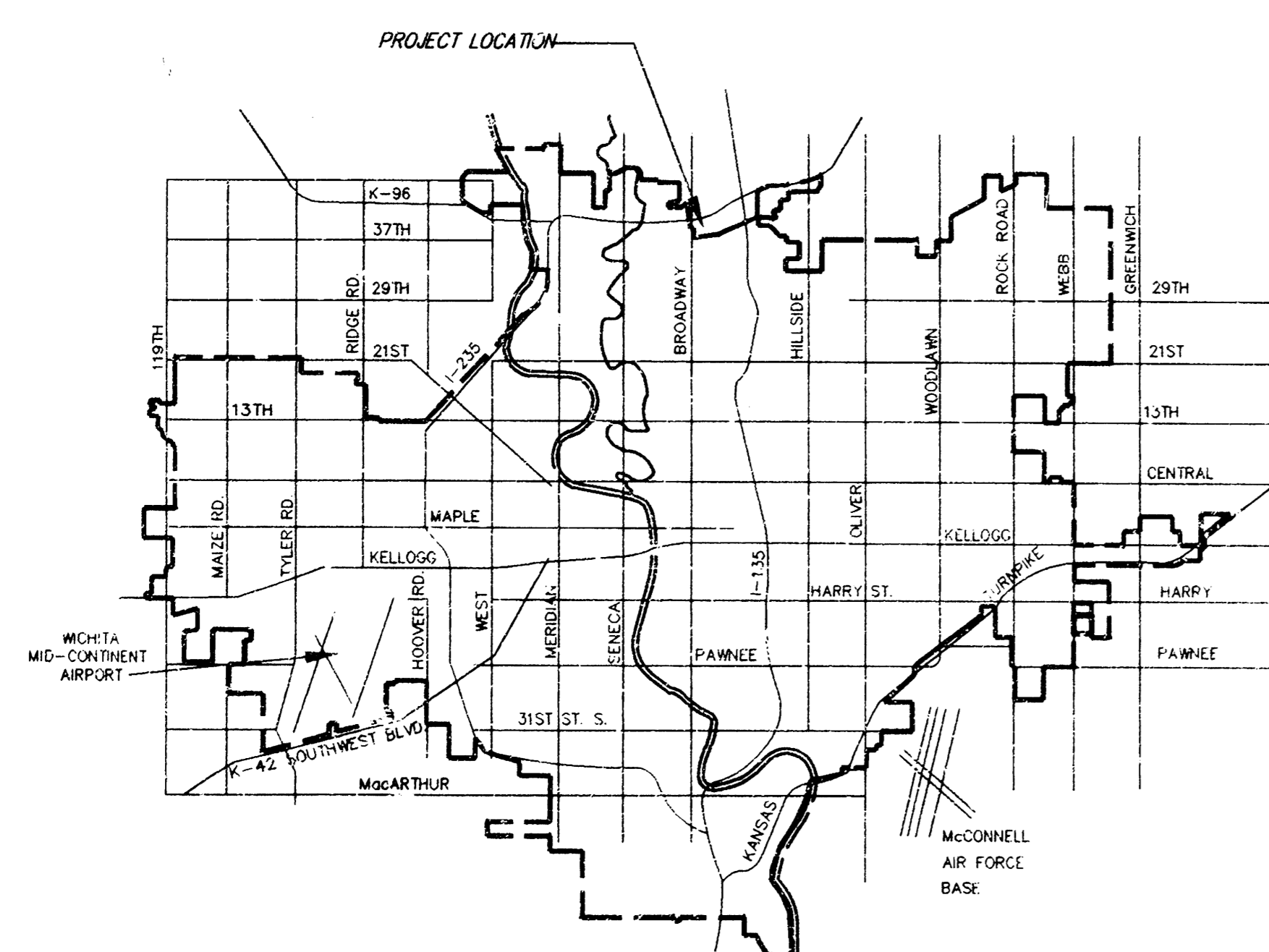
INDEX OF SHEETS

- TITLE SHEET
- LINE 1 - PLAN & PROFILE
- HEADWALL DETAILS
- RCMH DETAILS
- DROP INLET DETAILS
- PLAT COPY



Scale: 1" = 100'

BOOKED
3-19-99
MCL
D-417



VICINITY MAP

APPROVED AS NOTED
BY CITY ENGINEER OF WICHITA

Storm Sewers VRH 9/8/98

NOTE TO CONTRACTORS

Inspection and testing for this project are to be provided by a Licensed Consulting Engineering Firm under contract with the Owner/Developer. Said inspection to be in accordance with the City of Wichita standard construction engineering practices and certified by a Licensed Professional Engineer. No work shall be performed in dedicated easements or public right-of-way by the Contractor without such inspection, nor shall any work be commenced without written authorization by the City Engineer.

Sharon M. Ruggles
9-8-98

IMPROVEMENT DISTRICT

CITY OF WICHITA, KANSAS
MICHAEL E. LINDEBAK, P.E. - CITY ENGINEER

AS-BUILT 10-27-98

SRB 974 NORTH MAIN 316-264-8008
WICHITA, KANSAS 67203 FAX 264-4821
SAVOY, RUGGLES & BOHM, P.A.
ENGINEERING & SURVEYING

BENCHMARKS:
 City of Wichita Bench Mark. Conc. base for Railroad Signal, south side 37th St. N. 19.6' south of city line 37th St. and 13.6' west of west rail of R.R.
 ELEV. = 1324.16 (NGVD)
 Top of iron in thimble at S.E. Corner SW1/4 ELEV. = 1323.90 (NGVD)

STA. 0+00
 CONST. STD. HEADWALL W/ FLAPGATE (HYDRO-SEAL H-30 OR APPROVED EQUAL). 1315.16
 FLOW = 1315.59
 FLOW OUT (30") = 1316.84

INSTALL 29 S.Y. HEAVY STONE RIP-RAP PER CITY OF WICHITA STANDARDS

REMOVE FENCE AS NECESSARY TO CONSTRUCT TEMPORARY DIKE AND STORM SEWER

REMOVE TREES AS NECESSARY TO CONSTRUCT TEMPORARY DIKE.

STA. 2+60.00-2+63.87
 CONST. REINFORCE CONCRETE MANHOLE W/BEEHIVE INLET
 TOP = 1323.00 1323.41
 FLOW (30") = 1316.64 1316.66
 FLOW IN (24") = 1317.20 1317.51
 24" STUB (E) = 1317.20 1317.30

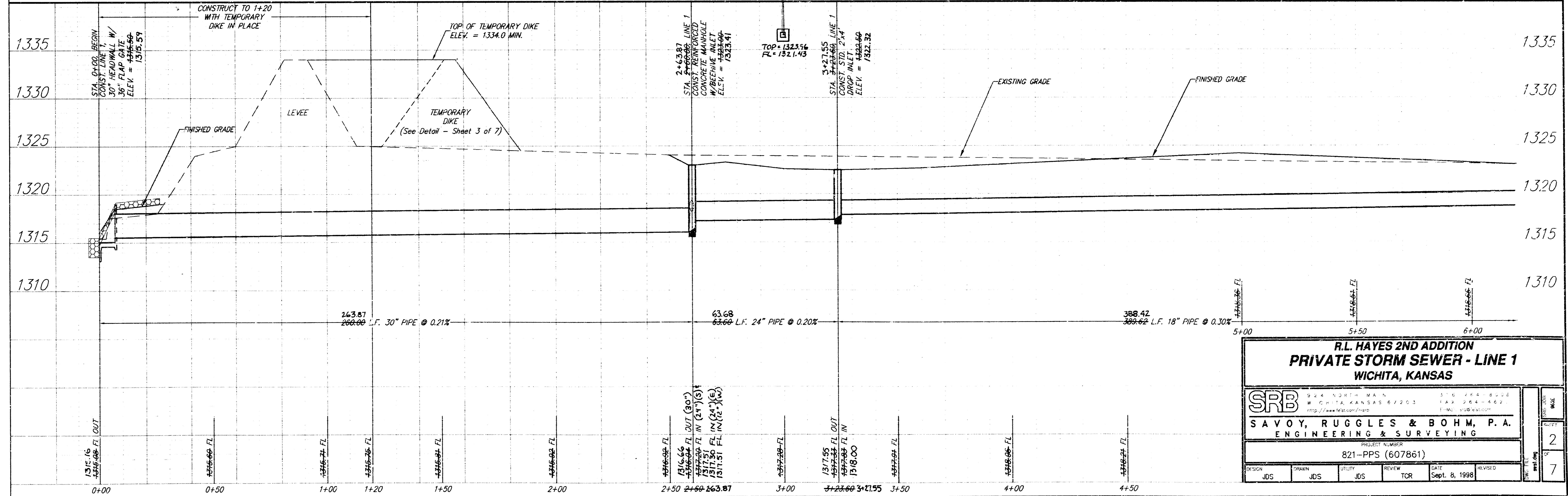
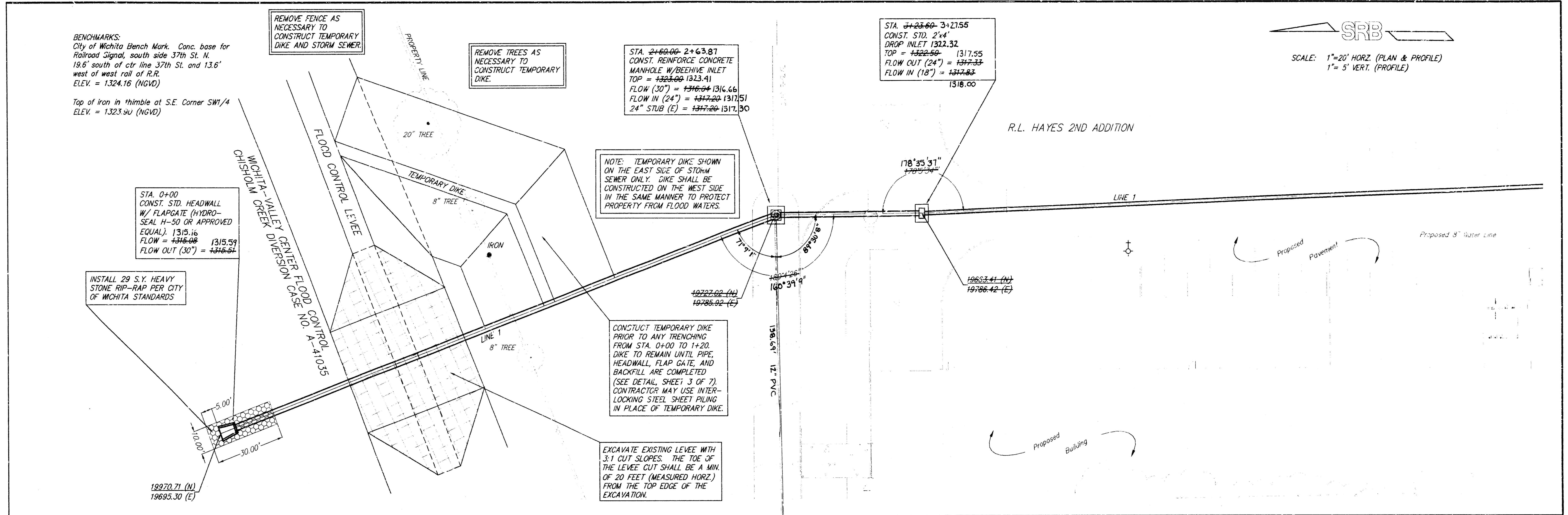
STA. 3+23.60-3+27.55
 CONST. STD. 2'4" DROP INLET 1322.32
 TOP = 1322.50 1317.55
 FLOW OUT (24") = 1317.33
 FLOW IN (18") = 1317.63 1318.00

NOTE: TEMPORARY DIKS SHOWN ON THE EAST SIDE OF STORM SEWER ONLY. DIKE SHALL BE CONSTRUCTED ON THE WEST SIDE IN THE SAME MANNER TO PROTECT PROPERTY FROM FLOOD WATERS.

CONSTRUCT TEMPORARY DIKE PRIOR TO ANY TRENCHING FROM STA. 0+00 TO 1+20. DIKE TO REMAIN UNTIL PIPE, HEADWALL, FLAP GATE, AND BACKFILL ARE COMPLETED. (SEE DETAIL, SHEET 3 OF 7) CONTRACTOR MAY USE INTER-LOCKING STEEL SHEET PILING IN PLACE OF TEMPORARY DIKE.

EXCAVATE EXISTING LEVEE WITH 3:1 CUT SLOPES. THE TOE OF THE LEVEE CUT SHALL BE A MIN. OF 20 FEET (MEASURED HORZ.) FROM THE TOP EDGE OF THE EXCAVATION.

SRB
 SCALE: 1"=20' HORZ. (PLAN & PROFILE)
 1"= 5' VERT. (PROFILE)



**R.L. HAYES 2ND ADDITION
 PRIVATE STORM SEWER - LINE 1
 WICHITA, KANSAS**

SRB
 SAVOY, RUGGLES & BOHM, P. A.
 ENGINEERING & SURVEYING

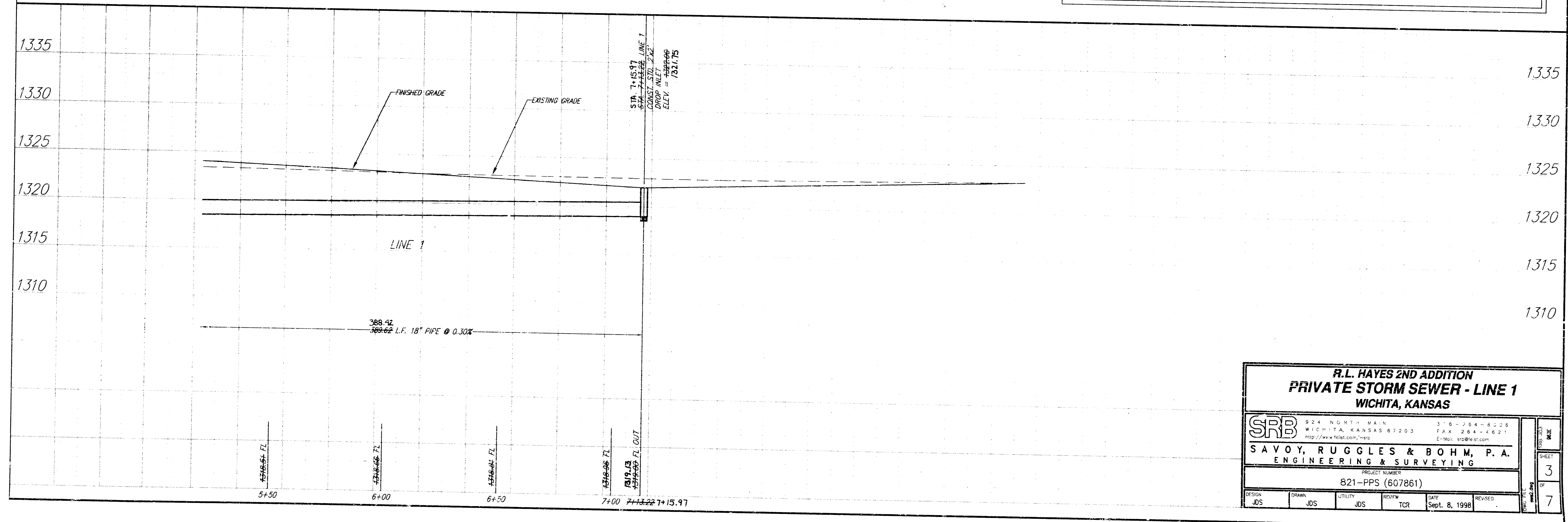
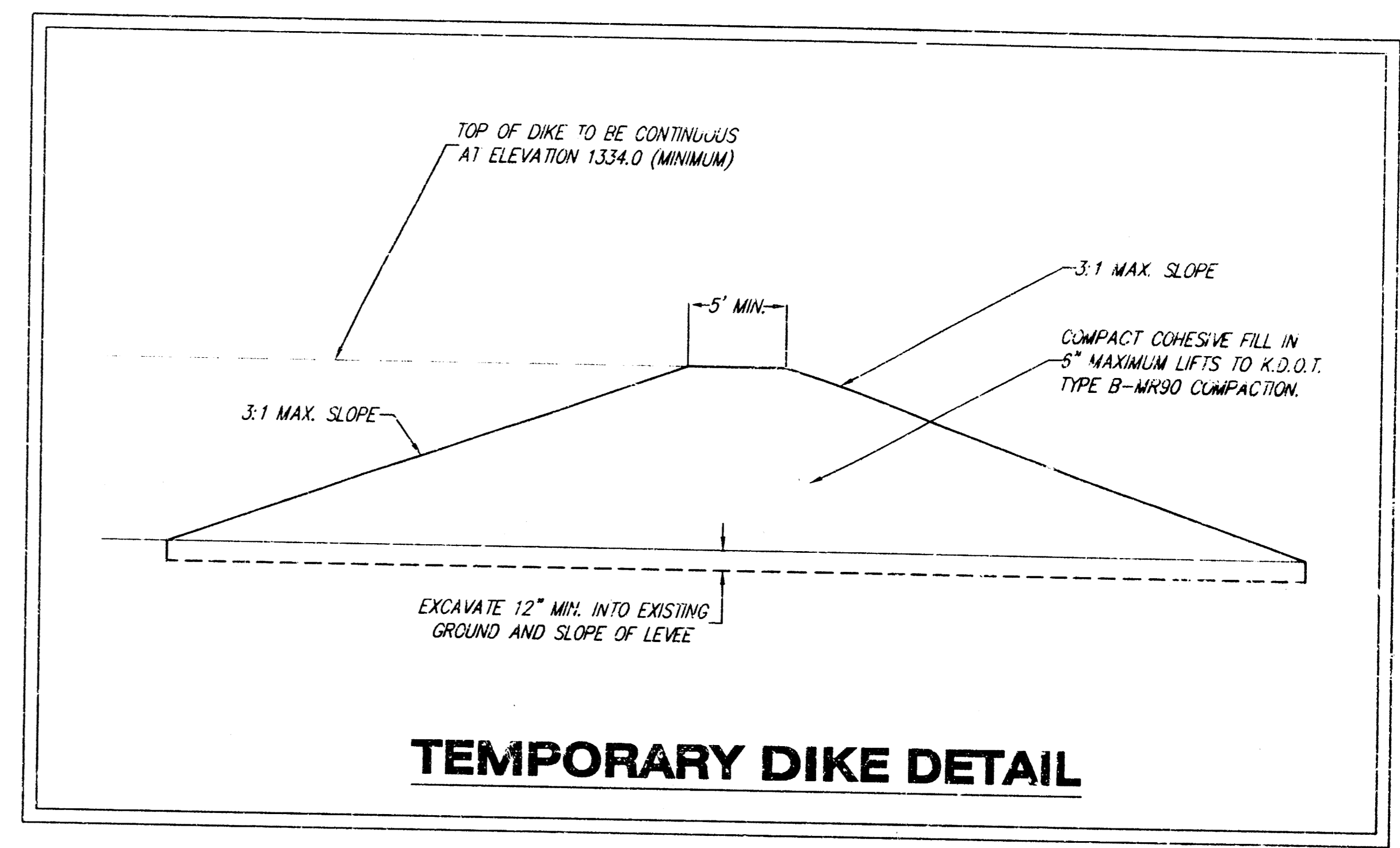
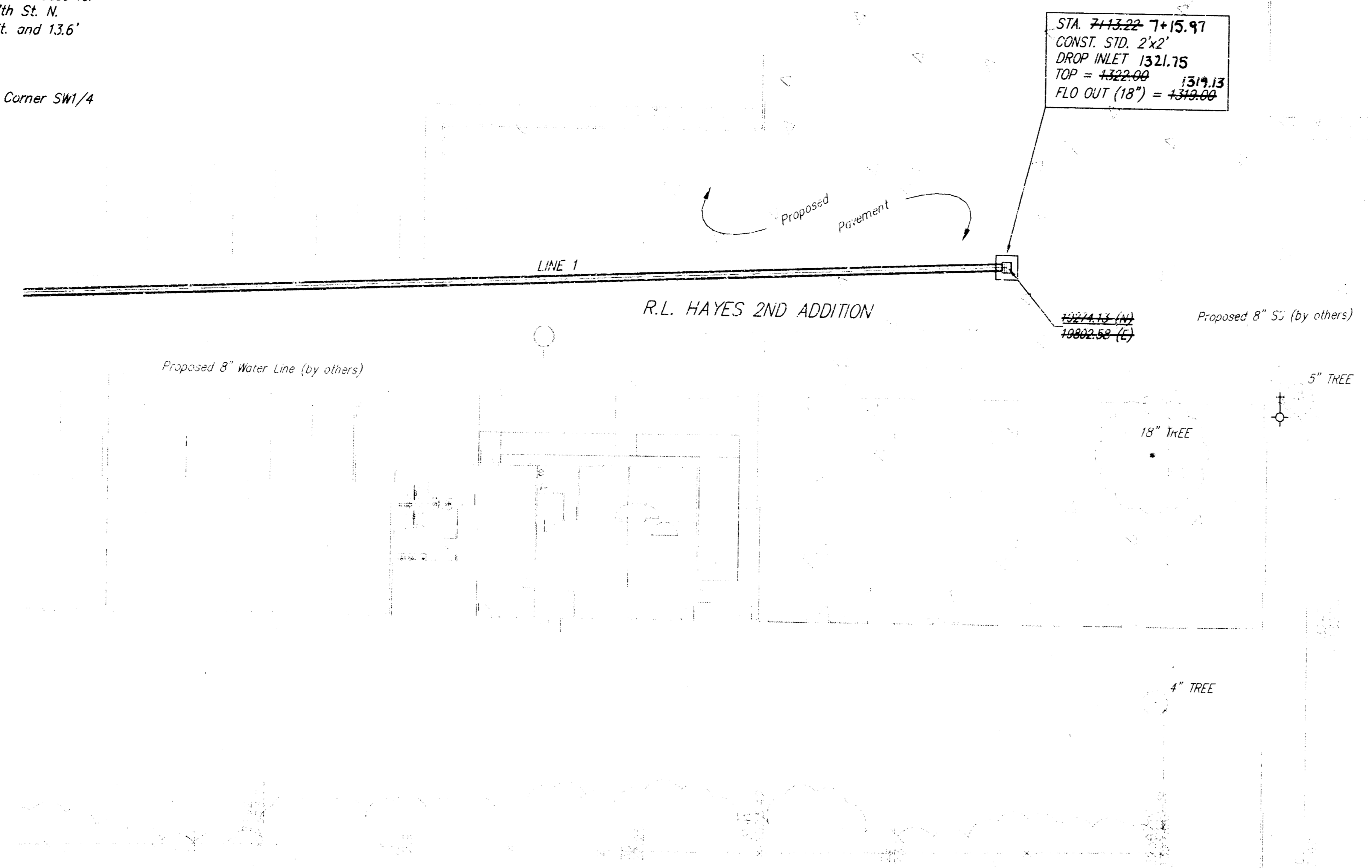
PROJECT NUMBER
 821-PPS (607861)

DESIGN	DRAWN	CHECKED	REVIEW	DATE	REVISED
JDS	JDS	JDS	TR	Sept. 8, 1998	

DATE	BY	REASON
9/8/98	JDS	ISSUE FOR PERMIT

BENCHMARKS:
 City of Wichita Bench Mark. Conc. base for
 Railroad Signal, south side 37th St. N.
 19.6' south of ctr line 37th St. and 13.6'
 west of west rail of R.R.
 ELEV. = 1324.16 (NGVD)
 Top of iron in thimble at S.E. Corner SW1/4
 ELEV. = 1323.90 (NGVD)

SRB
 SCALE: 1"=20' HORIZ. (PLAN & PROFILE)
 1"= 5' VERT. (PROFILE)



**R.L. HAYES 2ND ADDITION
 PRIVATE STORM SEWER - LINE 1
 WICHITA, KANSAS**

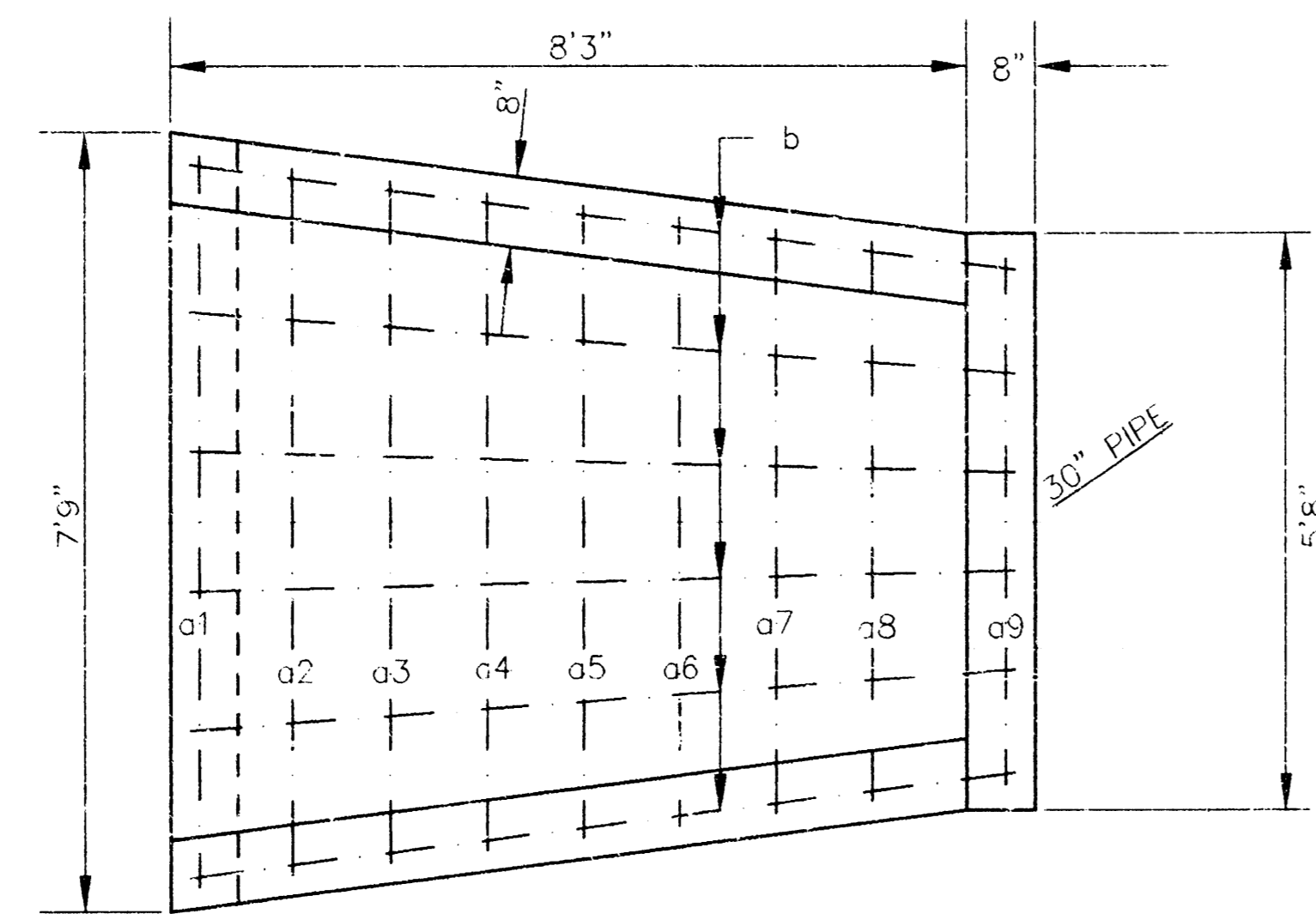
SRB 924 NORTH MAIN WICHITA, KANSAS 67203 316-254-8008 FAX 316-264-4621
 WWW.SRBENGINEERS.COM E-MAIL: SRB@SRB.COM

**SAVOY, RUGGLES & BOHM, P.A.
 ENGINEERING & SURVEYING**

PROJECT NUMBER: 821-PPS (607861)

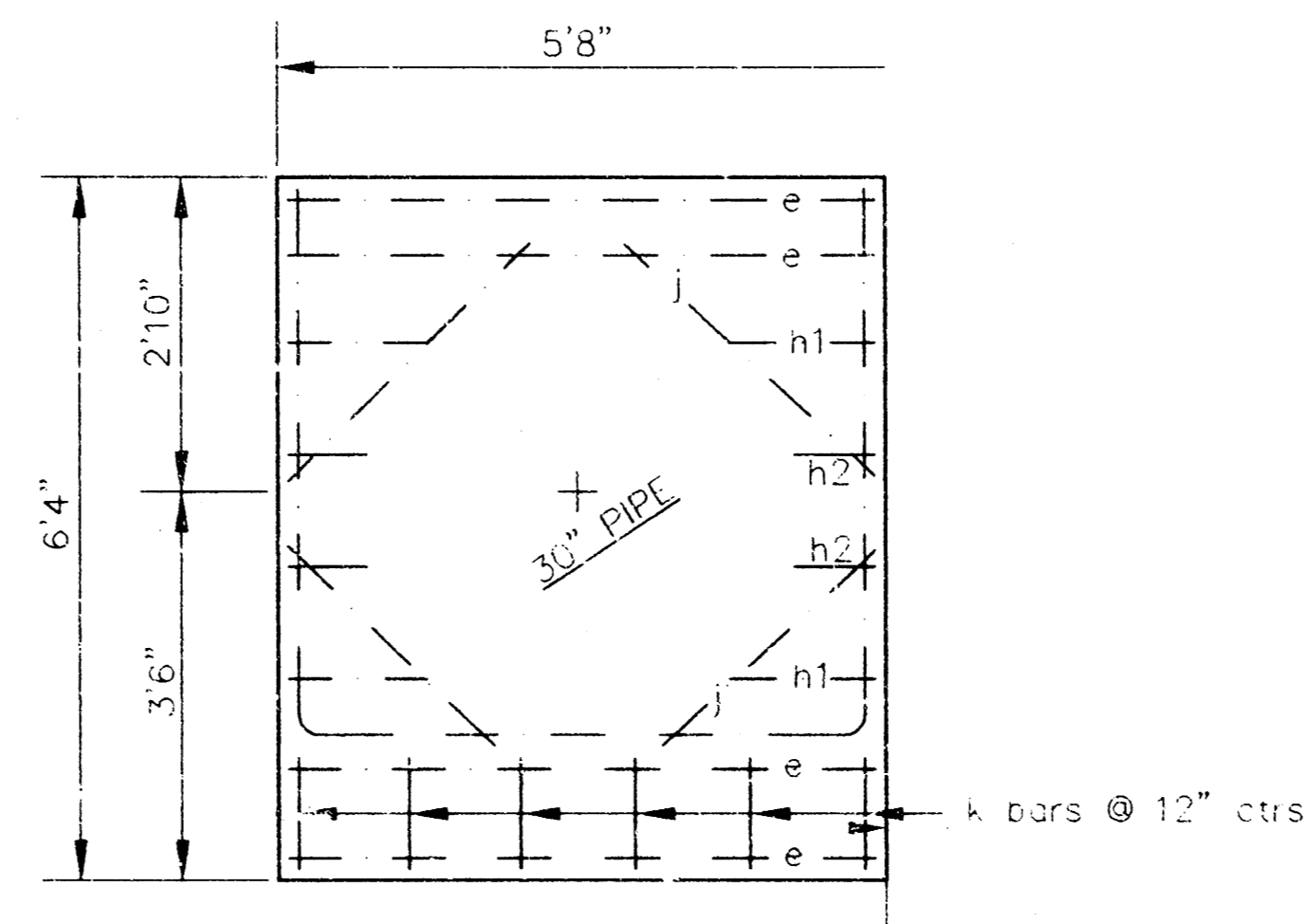
DESIGN	DRAWN	CHECKED	REVIEW	DATE	REVISED
JDS	JDS	JDS	TCR	Sept. 8, 1998	

DATE PLOTTED: 10/1/98
 SHEET 3 OF 7

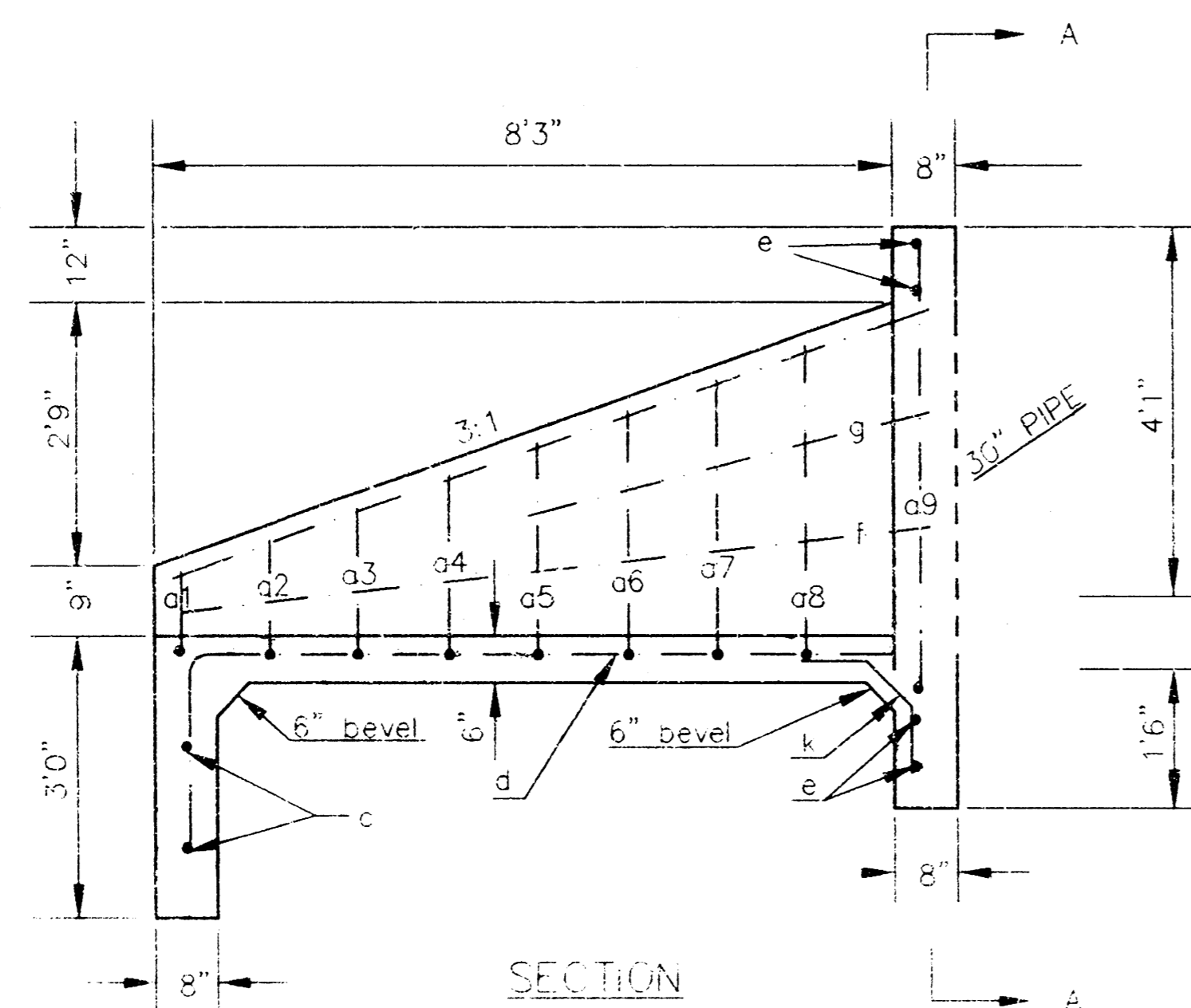


All exposed edges to have 1/2" bevel

PLAN



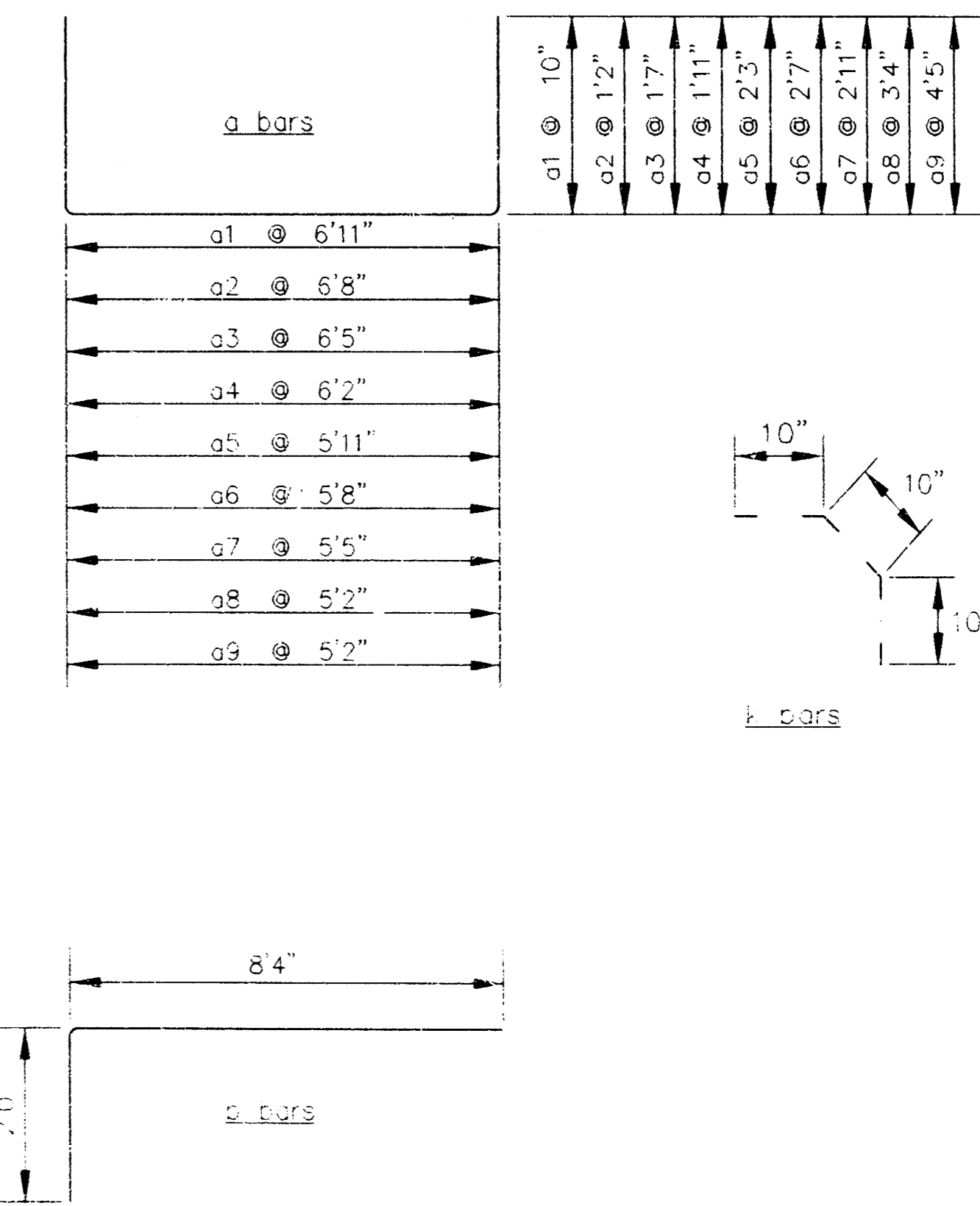
A-A SECTION



SECTION

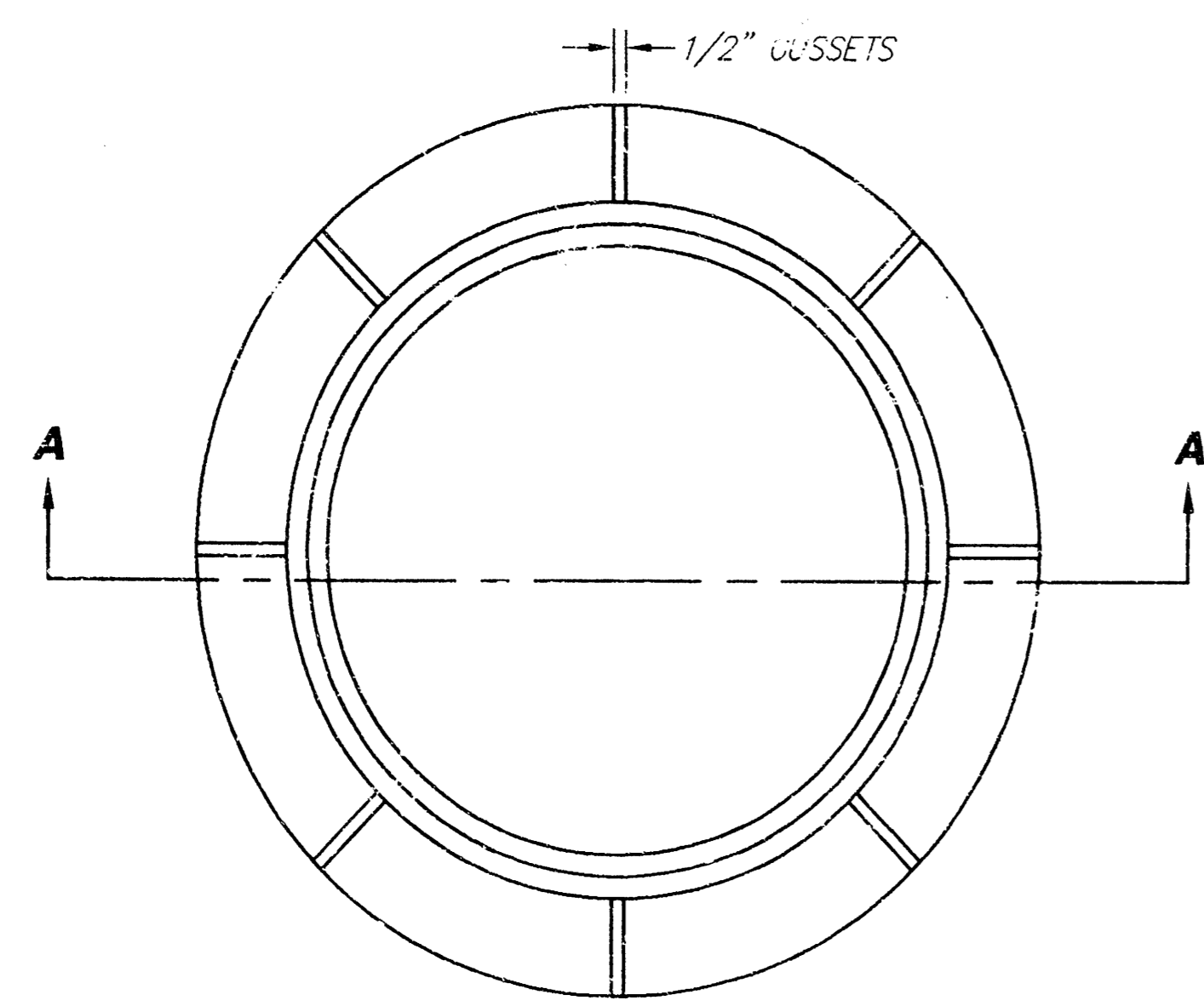
BAR	NUMBFR	LENGTH	SHAPE	WEIGHT
a1	1	8'7"	U	5.73
a2	1	9'0"	U	6.01
a3	1	9'7"	U	6.40
a4	1	10'0"	U	6.68
a5	1	10'5"	U	6.96
a6	1	10'10"	U	7.24
a7	1	11'3"	U	7.52
a8	1	11'10"	U	7.90
a9	1	15'0"	U	10.02
b	6	10'4"	U	41.42
c	2	7'0"	U	9.35
d	2	9'0"	U	12.02
e	4	5'4"	U	14.25
f	2	8'5"	U	11.24
g	2	4'7"	U	6.12
h1	4	1'6"	U	4.01
h2	4	1'0"	U	2.23
j	4	3'0"	U	8.02
k	6	2'6"	U	10.02
Total Rebar, lbs				183.14
Concrete, C.Y.				3.3

All rebars to be #4.

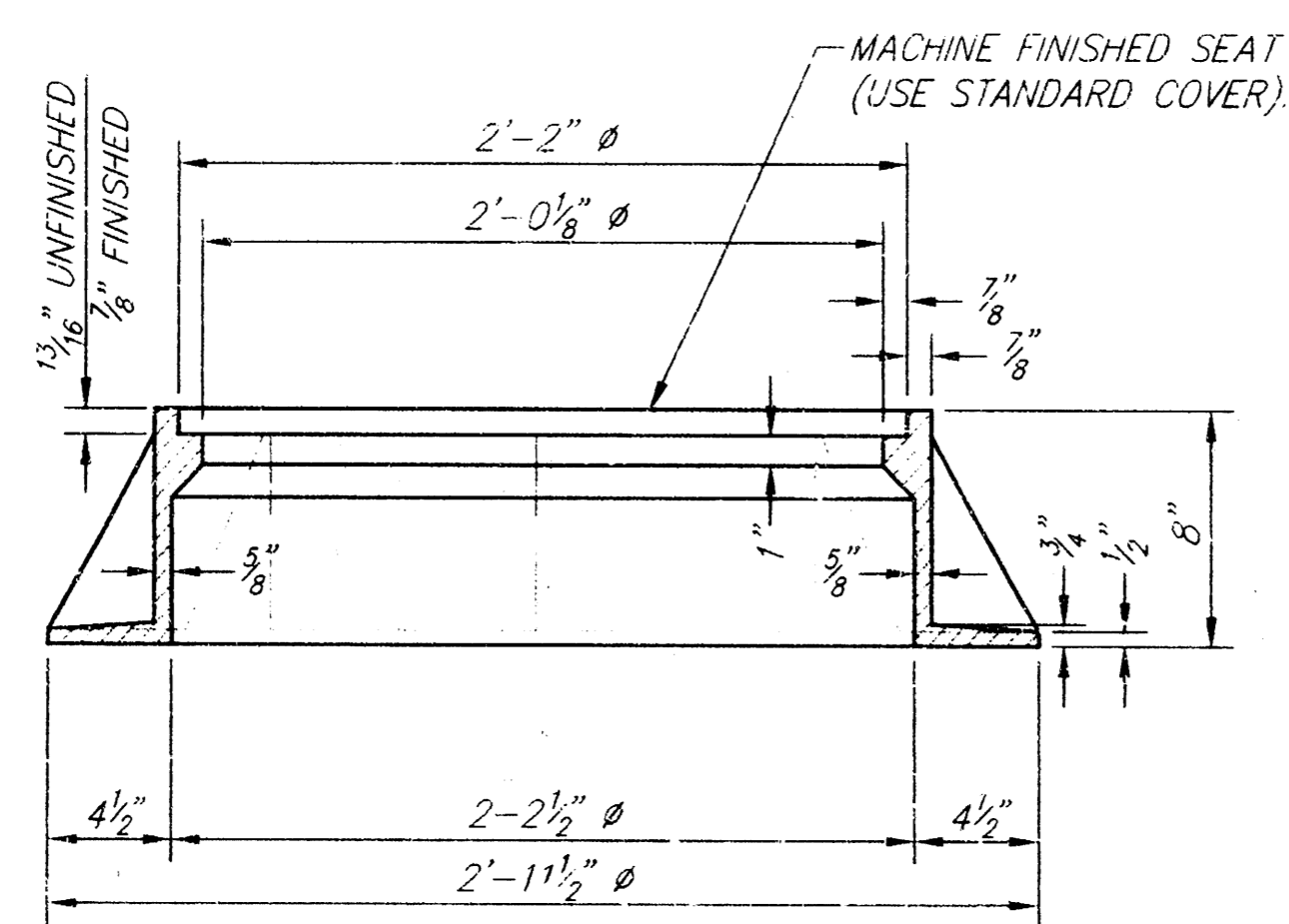


HEADWALL FOR 30" PIPE w/ FLAP GATE

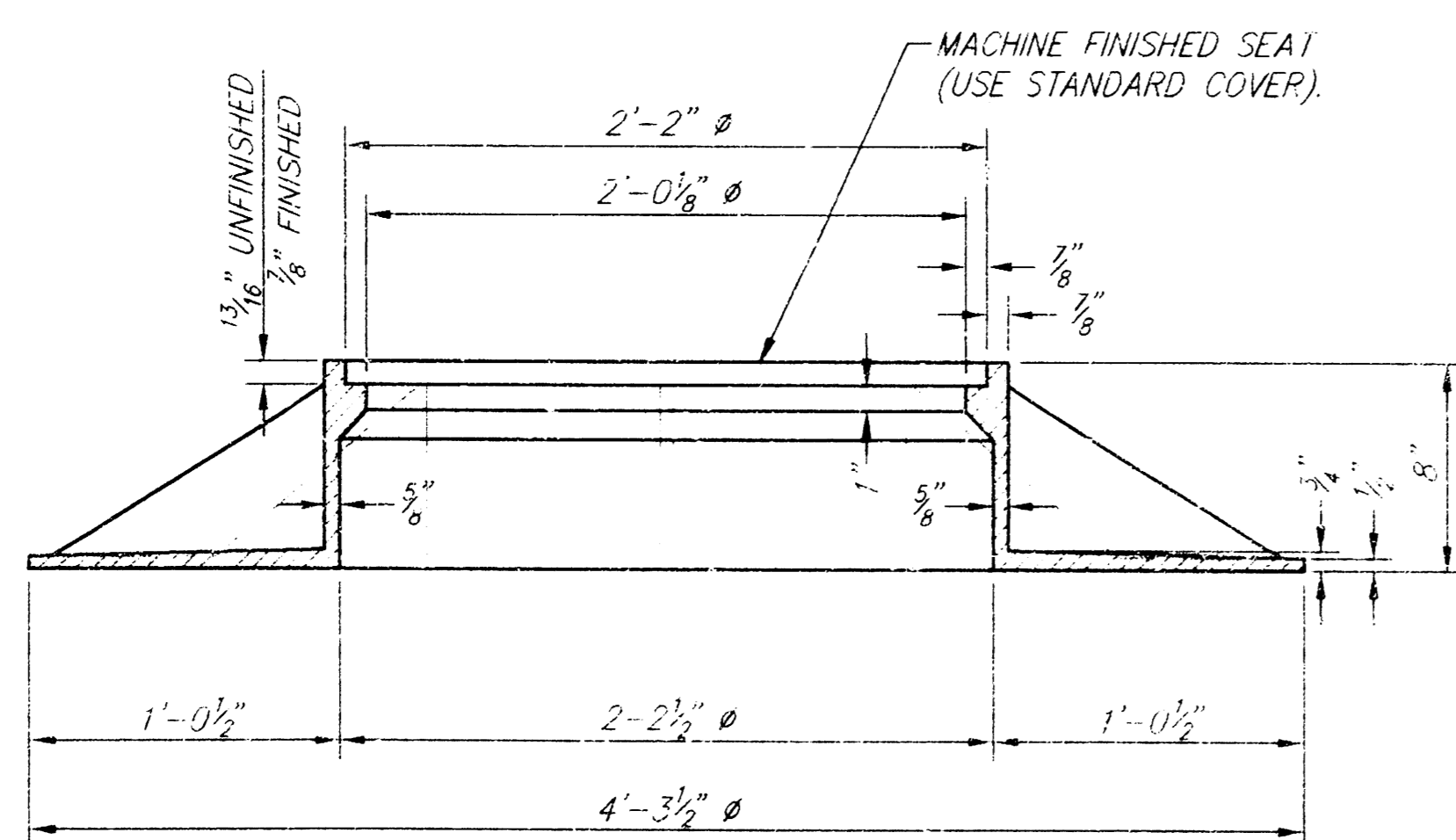
R.L. HAYES 2ND ADDITION			
Headwall Detail for 30" Pipe w/ Flap Gate			
WICHITA, KANSAS			
SRB	820 NORTH VA X WICHITA, KANSAS 67202 http://www.rsb.com/ksrb	PHONE 784-8208 FAX 784-8822 E-mail: rsl@rsb.com	DATE: 09/02
SAVOY, RUGGLES & BOHM, P. A.			
ENGINEERING & SURVEYING			
PROJECT NUMBER: 821-PPS (607861)			
DESIGN JDS	DRAWN JDS	CHECKED TCR	DATE Sept. 8, 1998



PLAN
*STANDARD MANHOLE FRAME SHOWN

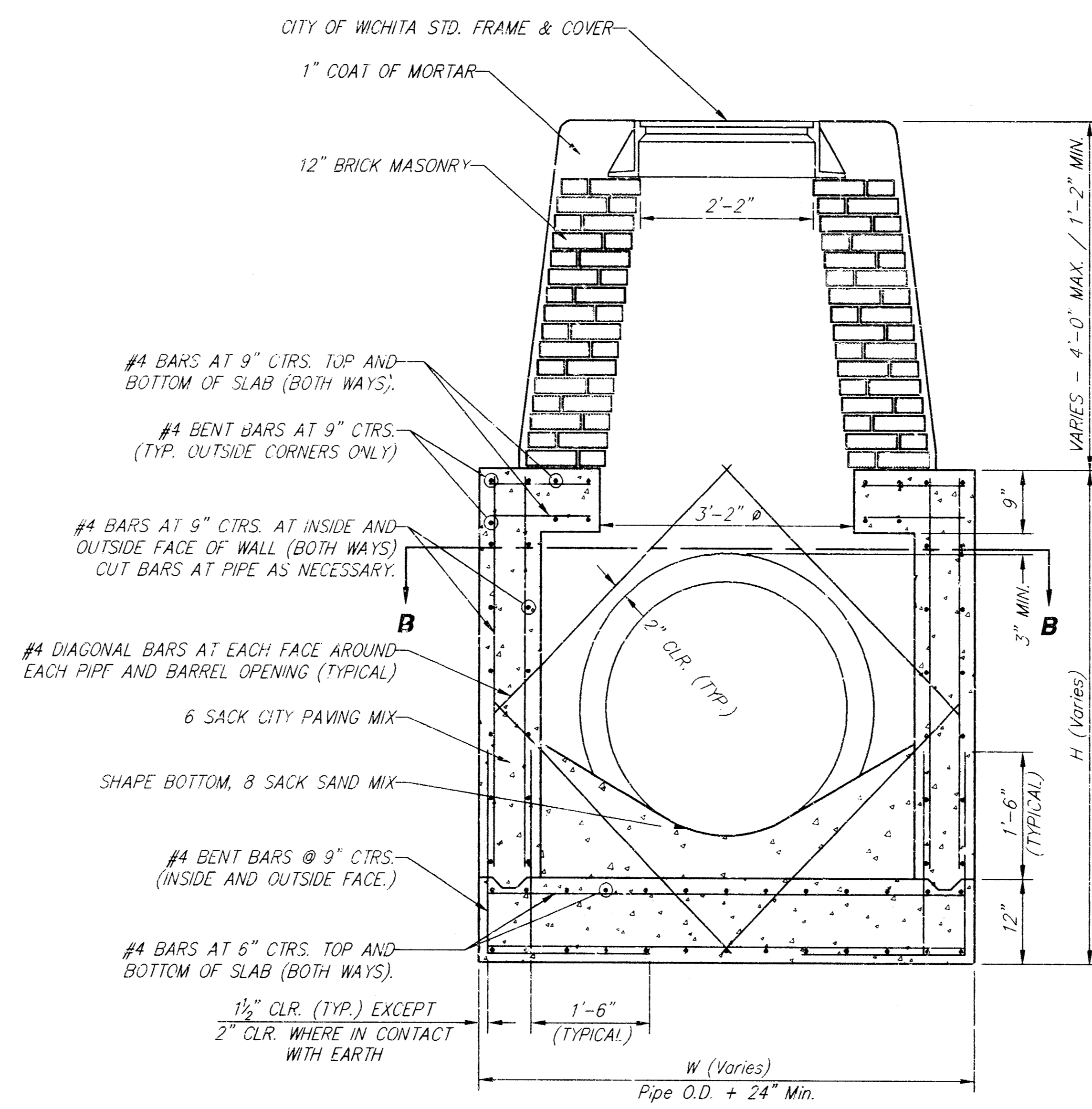


SECTION A-A
STANDARD MANHOLE FRAME
WEIGHT = 240 LBS.

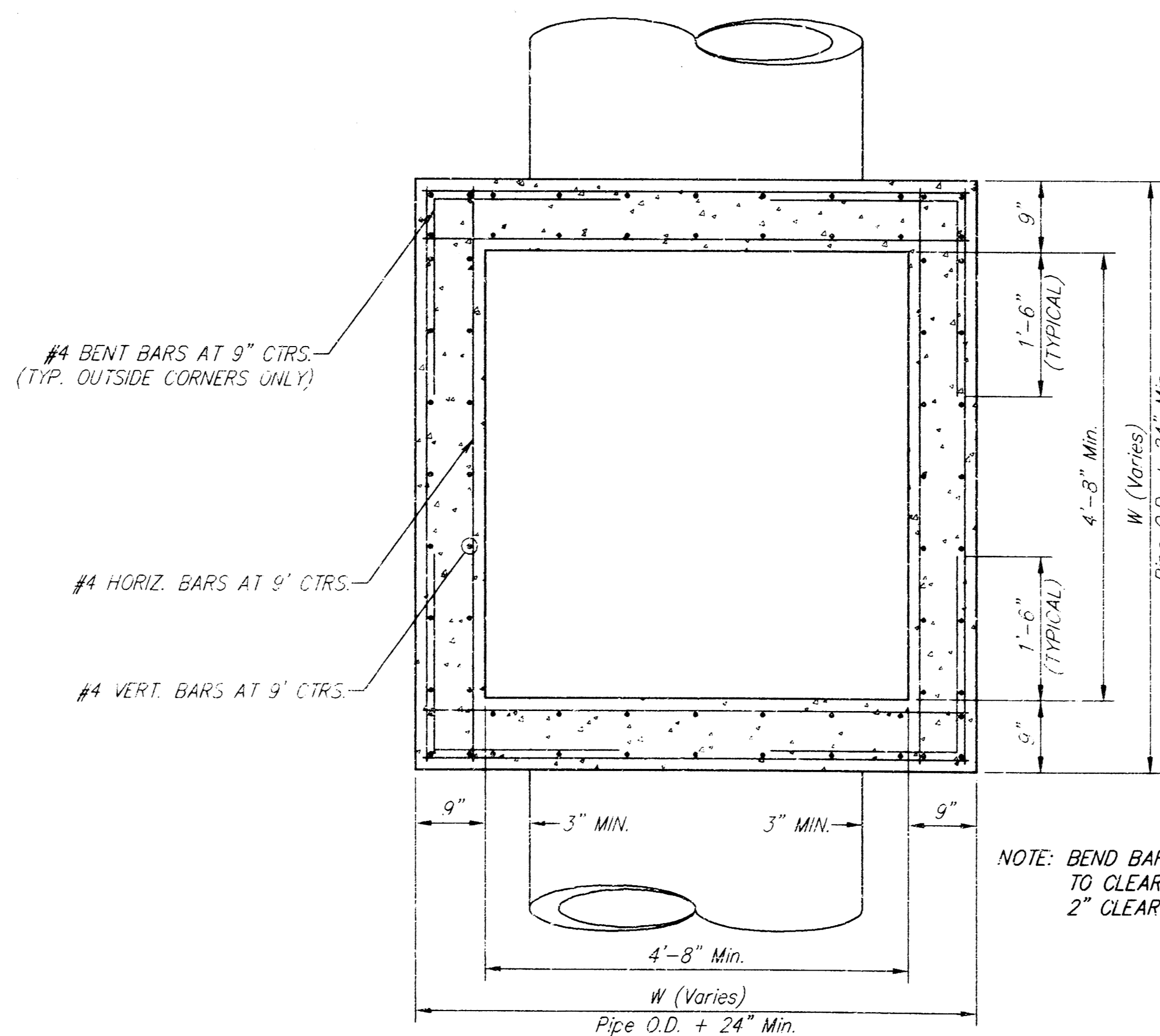


SECTION A-A
WIDE FLANGE MANHOLE FRAME
WEIGHT = 705 LBS.

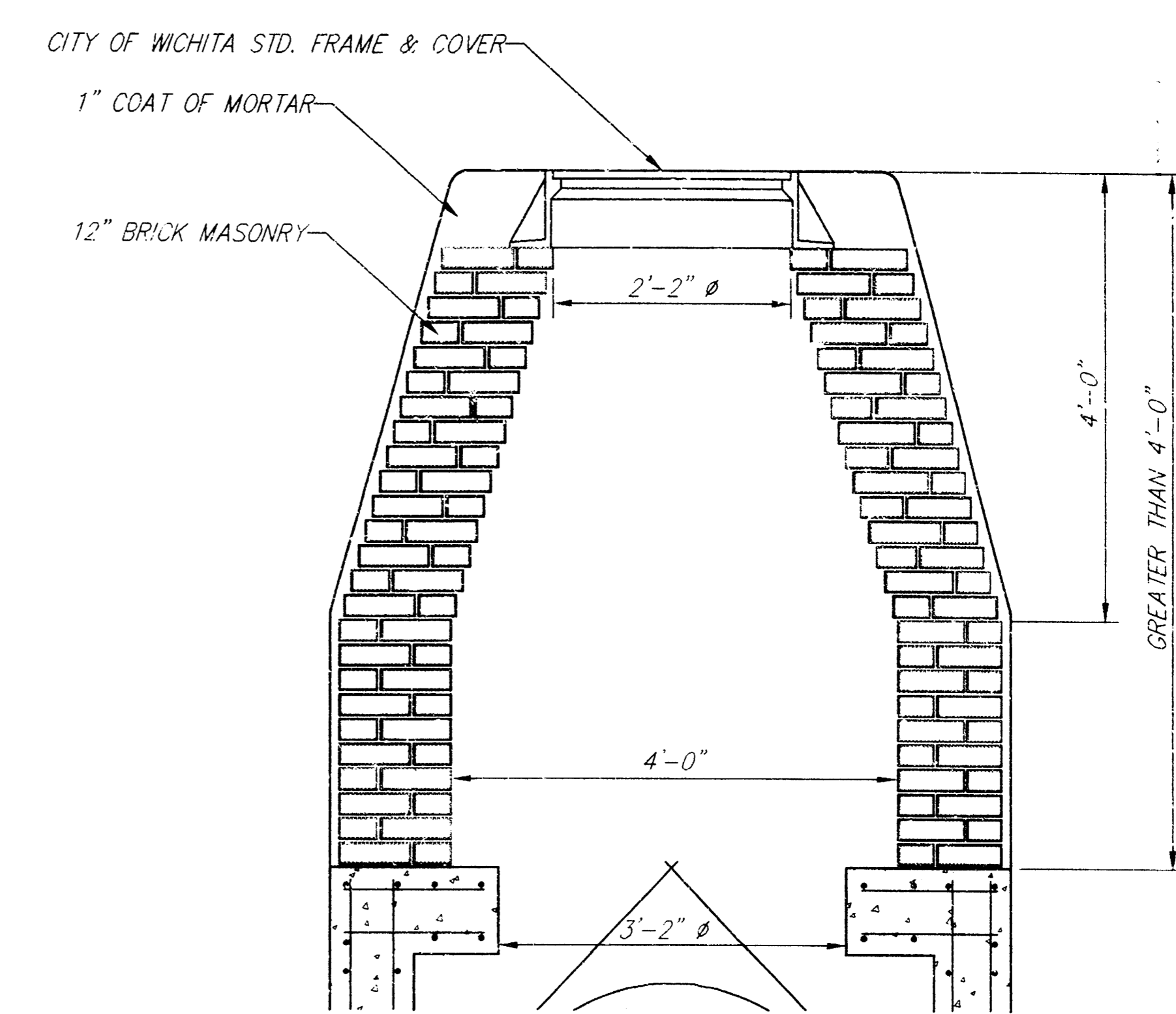
CITY OF WICHITA STANDARD MANHOLE FRAME DETAILS



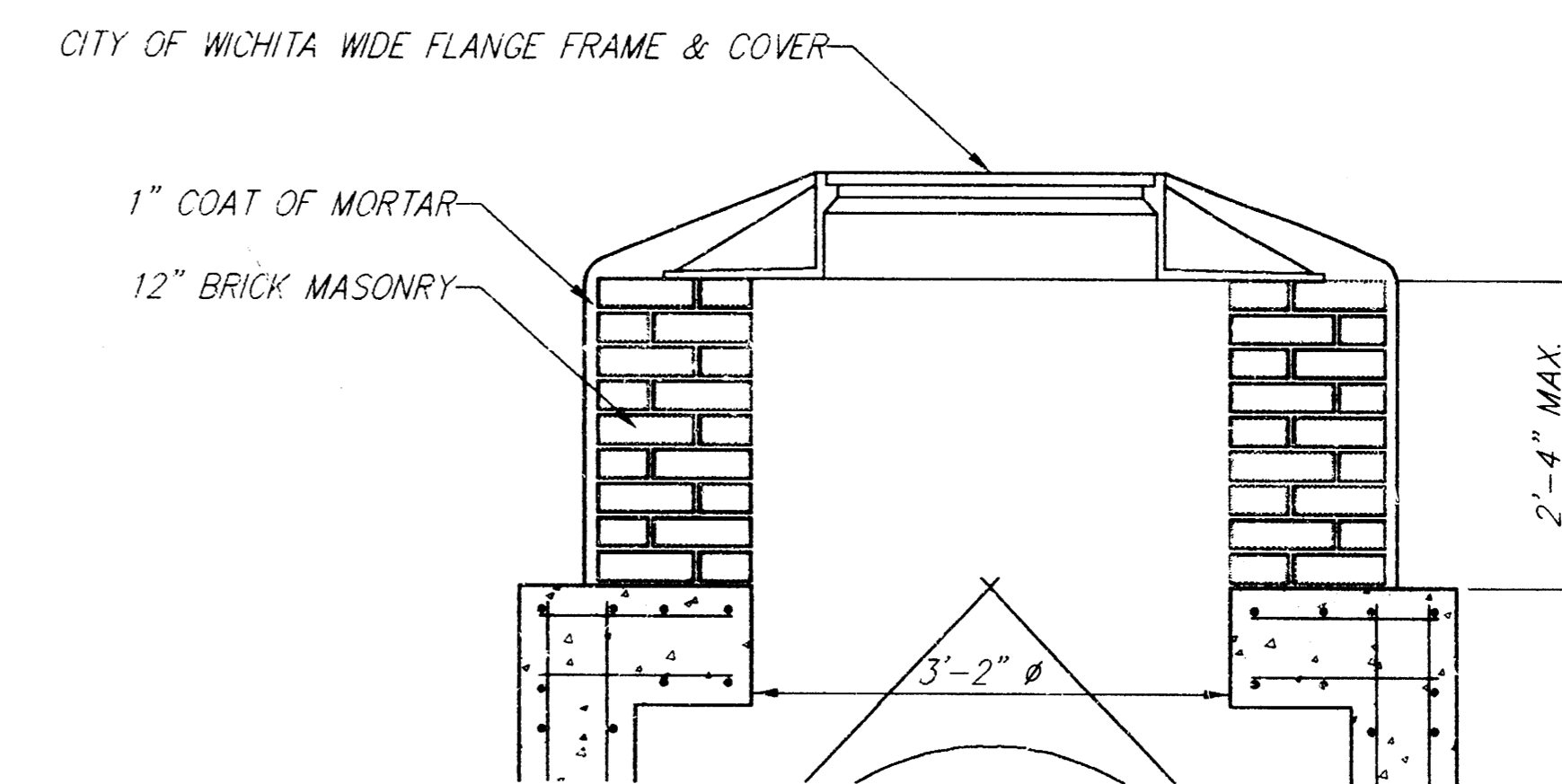
REINFORCED CONCRETE MANHOLE
STACK HEIGHT 2'-4" TO 4'-0"



SECTION B-B



STACK HEIGHT GREATER THAN 4'-0"



STACK HEIGHT LESS THAN 2'-4"

GENERAL NOTES:

- MORTAR USED IN MASONRY CONSTRUCTION SHALL CONTAIN 8 SACKS OF CEMENT PER CUBIC YARD. CONCRETE USED IN MANHOLE WALLS AND BASES SHALL CONFORM TO THE REQUIREMENTS FOR CONCRETE PAVEMENT CONSTRUCTION AS SPECIFIED IN THE CITY STANDARD PAVING SPECIFICATIONS, USING CITY CONCRETE PAVEMENT MIX WITHOUT AIR ENTRAINING ADMIXTURE. MORTAR SHALL BE PLACED AROUND THE MANHOLE RING AS SHOWN ON THE DRAWINGS WHEN MANHOLES ARE CONSTRUCTED IN UNPAVED AREAS. COMPLETED MANHOLE SHALL BE WITHOUT LEAKS AND WATER TIGHT.
- THE FLOORS OF ALL MANHOLES SHALL BE SHAPED WITH FLOW CHANNELS SUCH THAT THE MANHOLES WILL BE SELF-CLEANING, USING 8 SACK SAND MIX CONCRETE. FLOW CHANNELS SHALL BE FORMED TO MATCH THE BOTTOM HALVES OF THE INFLOWING PIPES AND THE OUTFLOWING PIPE. MANHOLE FLOORS SHALL HAVE SLOPES OF 3 INCHES PER FOOT IN THE AREAS OUTSIDE OF THE FLOW CHANNELS, SLOPED TOWARD THE FLOW CHANNELS.
- MANHOLE COVER CASTINGS AND MANHOLE FRAME CASTINGS SHALL CONFORM TO THE REQUIREMENTS AS INDICATED IN THE STANDARD SPECIFICATIONS AND AS SHOWN IN THE STANDARD DETAIL DRAWING.
- THE ENDS OF ALL PIPES IN MANHOLES SHALL BE CUT OFF FLUSH WITH THE INSIDE FACE OF MANHOLE WALL.

REINFORCED CONCRETE MANHOLE DETAILS
WICHITA, KANSAS

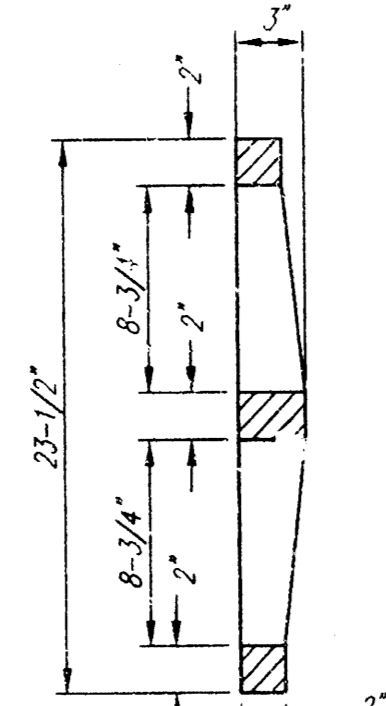
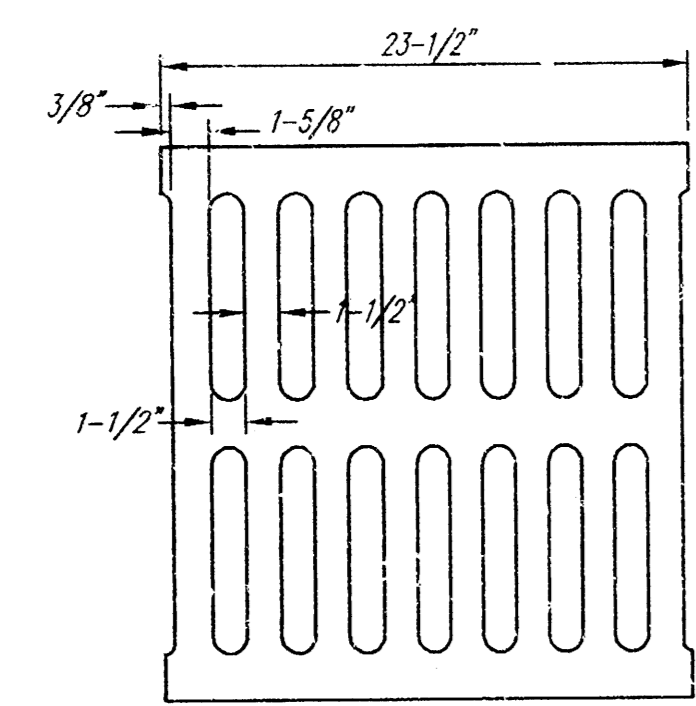
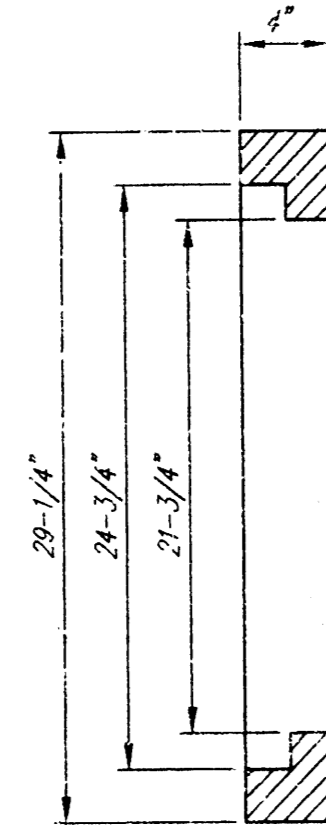
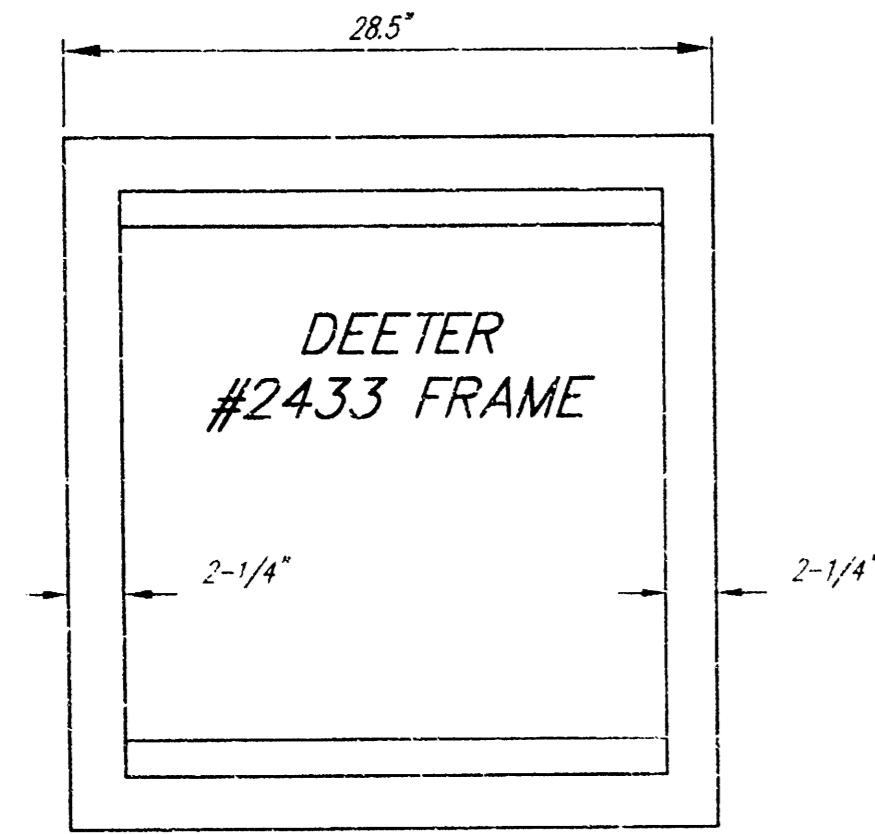
SRB 924 NORTH MAIN 316-264-8008
WICHITA, KANSAS 67203 FAX 316-264-4621
http://www.srb.com/kans http://www.srb.com/kans

SAVOY, RUGGLES & BOHM, P.A.
ENGINEERING & SURVEYING

PROJECT NUMBER
821-PPS (607861)

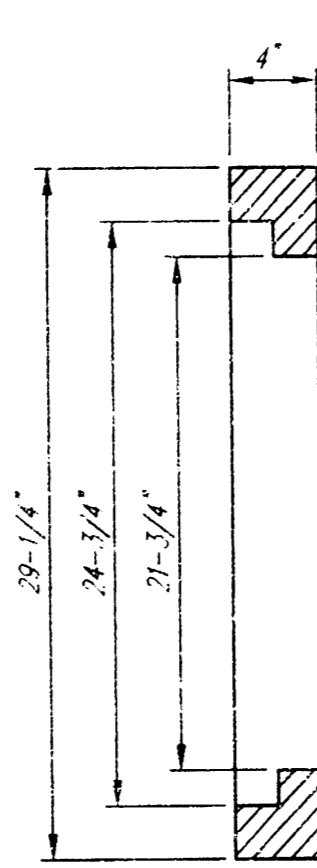
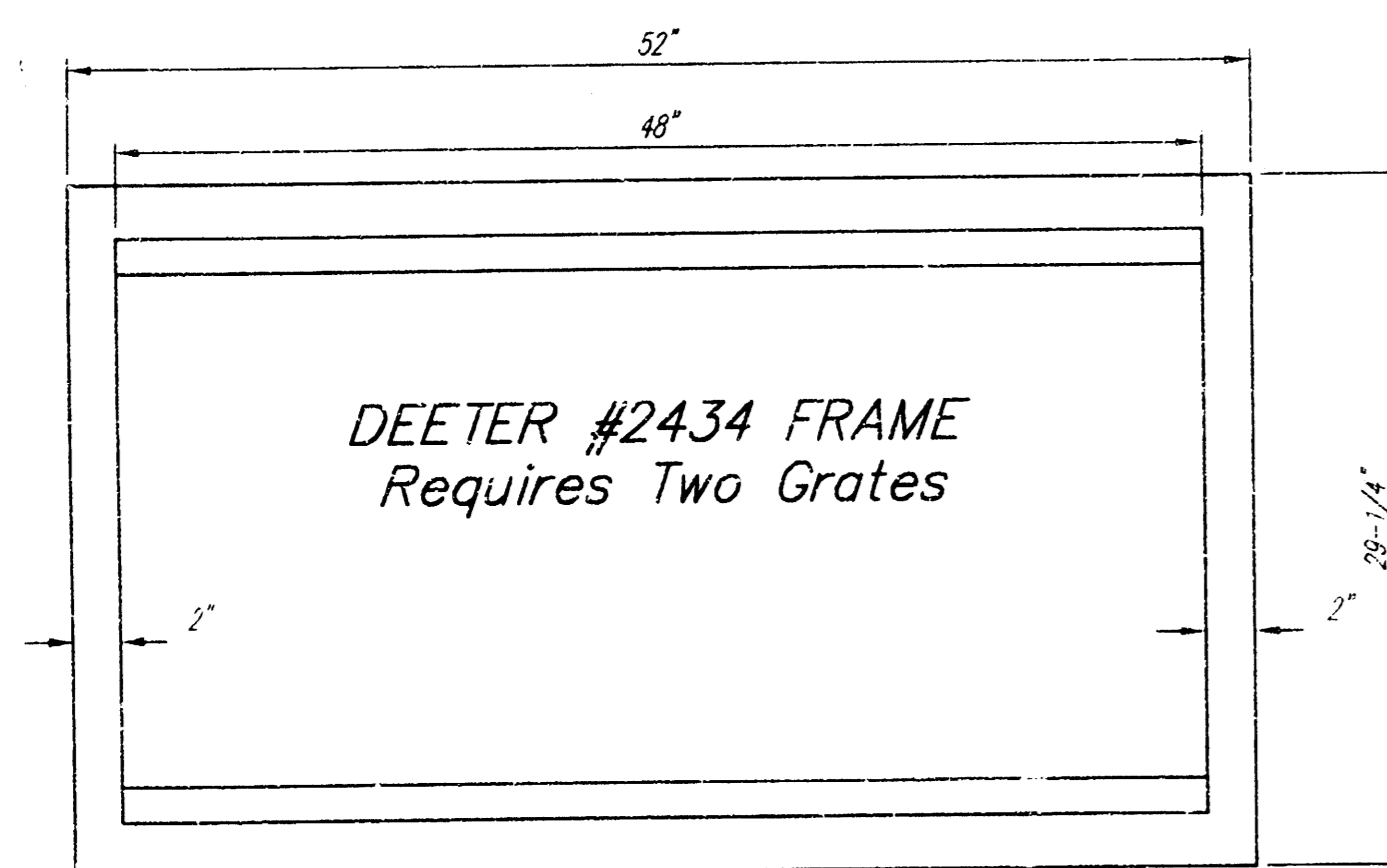
DESIGN	DRAWN	UTILITY	REVIEW	DATE	REVISED
C.O.W.	J. Long				

SHEET
5
OF
7



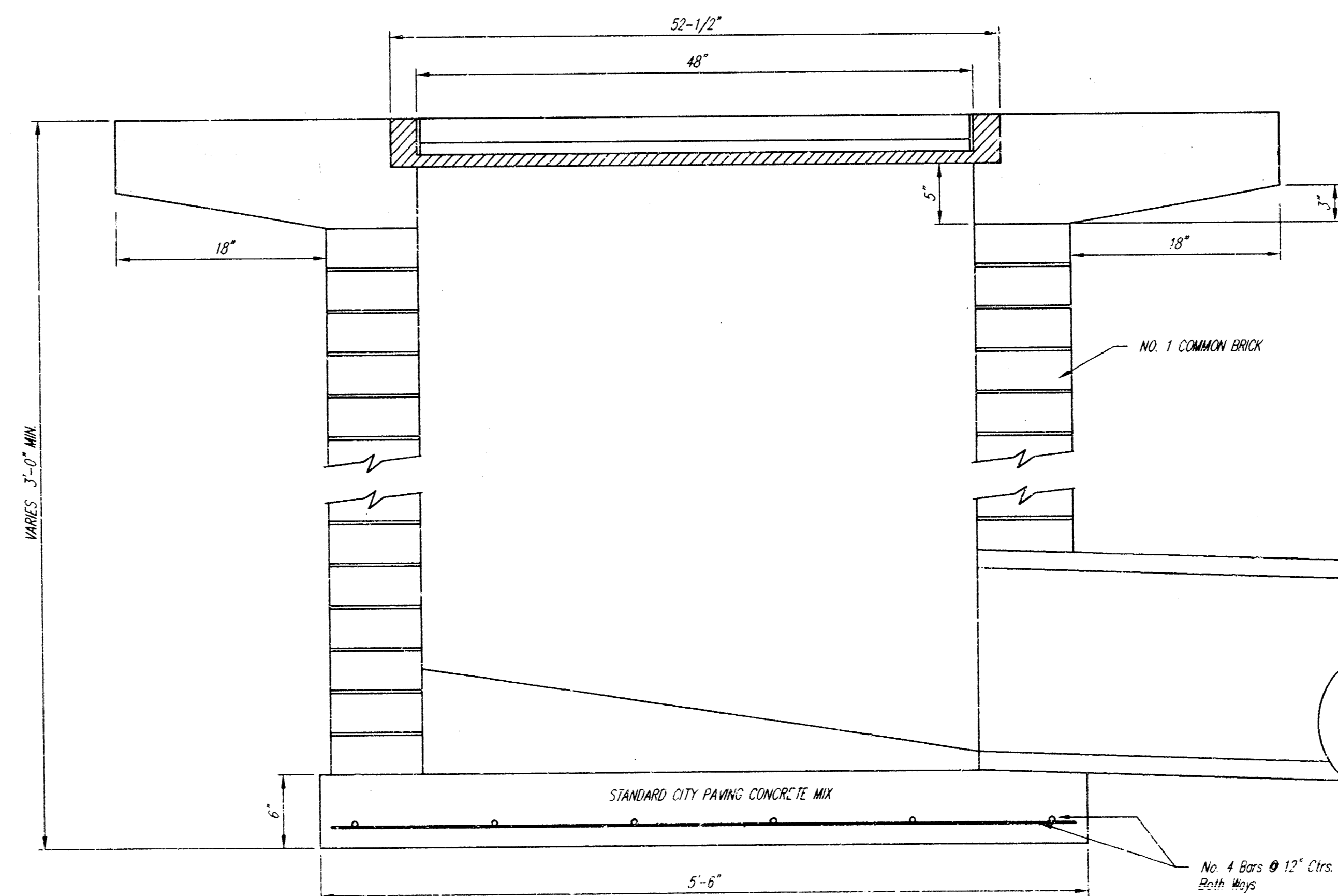
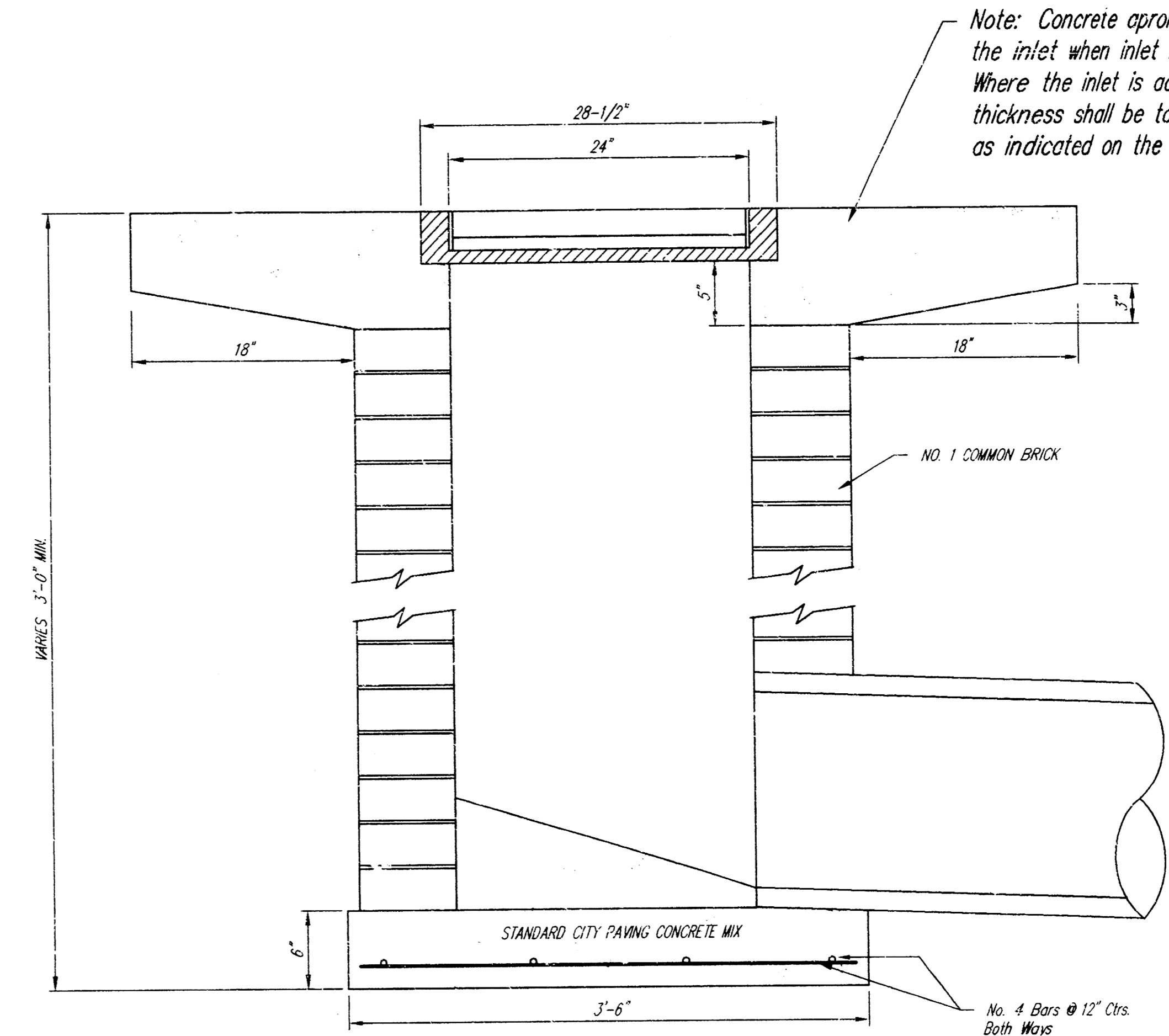
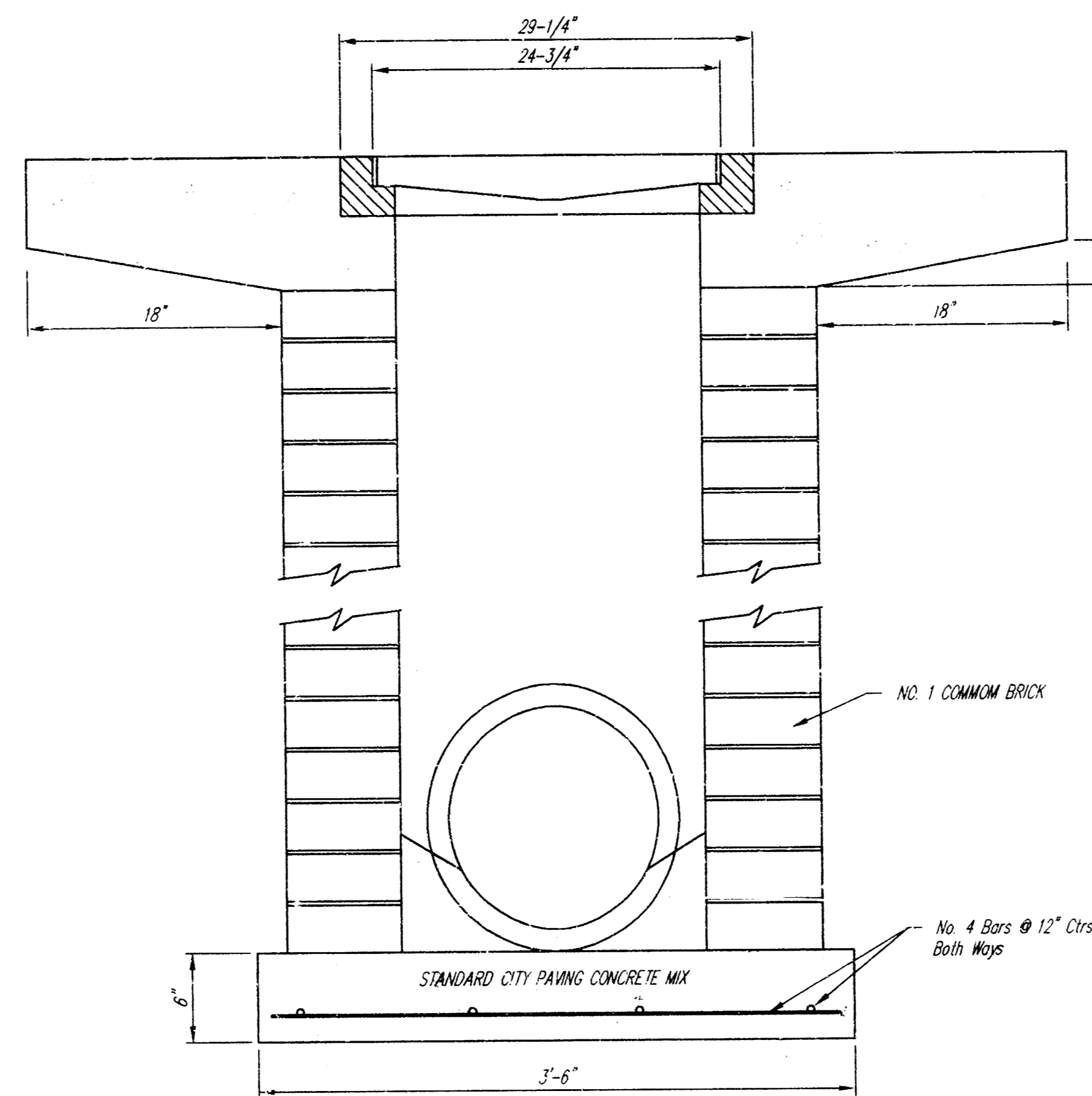
DEETER #2433 GRATE

24" x 24" Frame and Grate Detail



DEETER #2434 FRAME
Requires Two Grates

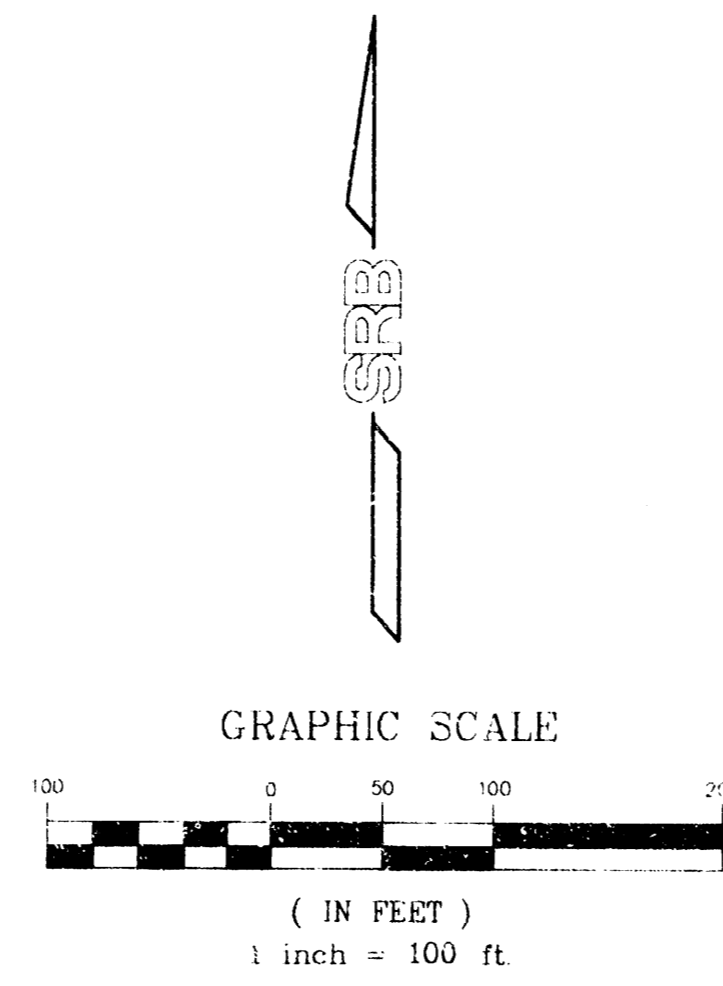
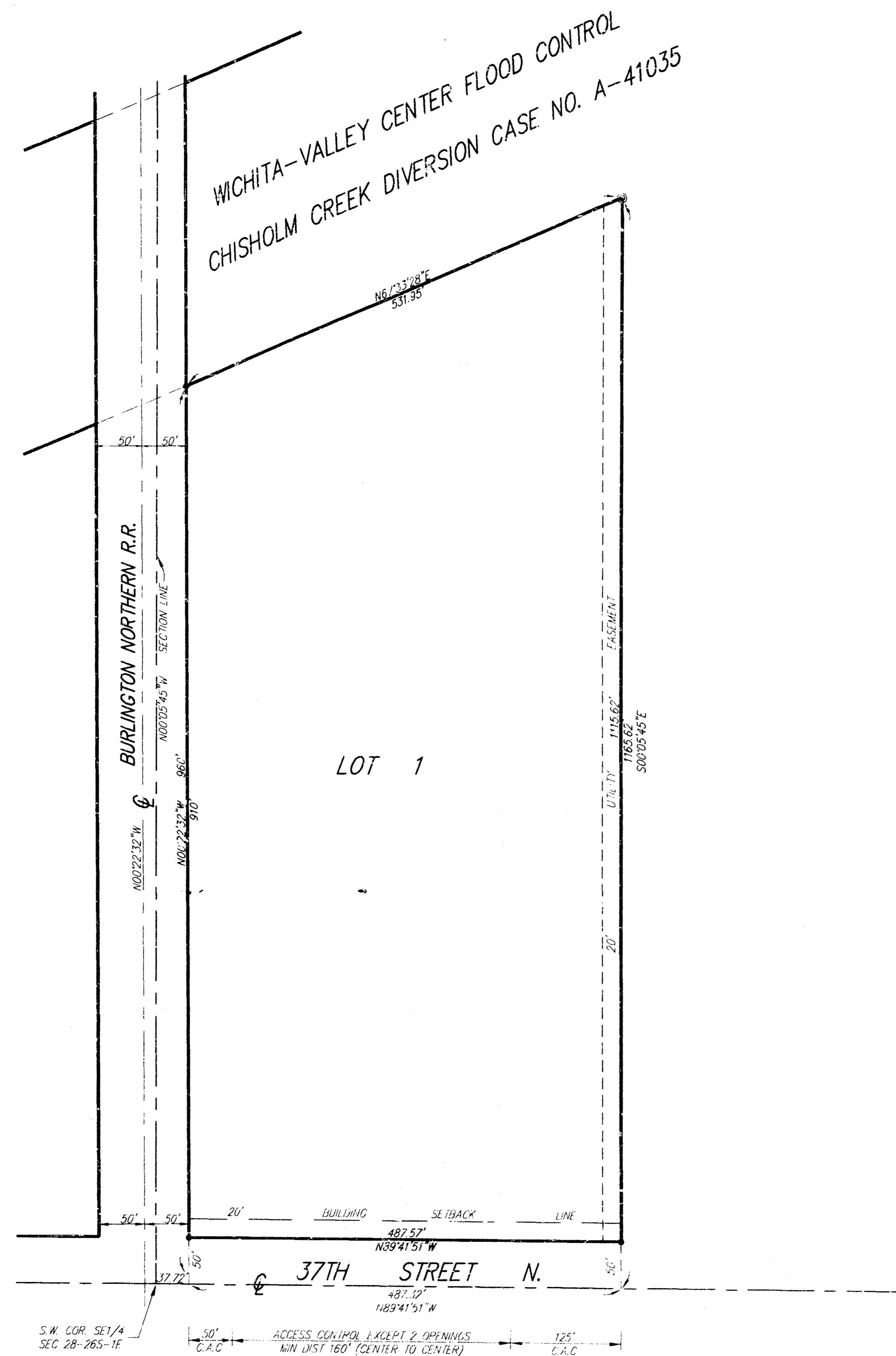
Double 24" x 24" Frame Detail



<p>THE CITY OF WICHITA</p> <p>CITY ENGINEER'S OFFICE CITY HALL - SEVENTH FLOOR 453 NORTH MAIN STREET WICHITA, KANSAS 67202 (316) 268-4001 (316) 268-4114 FAX</p>	DROP INLET 2'x2' / 2'x4'	
	M. E. LINDEBAK P.E. - CITY ENGINEER	
	PROJECT NUMBER 821-PPS	INDEX CODE 807861
	DATE MAR 96	SHEET 6 OF 7

R. L. HAYES 2ND ADDITION

WICHITA, SEDGWICK COUNTY, KANSAS



C.A.C. = EXHIBIT A/E ACCESS OPENING

- = 1/2" REBAR w/5/8" CAP (FOUND)
- = 5/8" REBAR (FOUND)
- ⊗ = 3/4" IRON PIPE (FOUND)

State of Kansas) SS
Sedgwick County)

We, Savoy, Ruggles & Bohm, P.A., Surveyors in aforesaid county and state do hereby certify that, under the supervision of the undersigned, we have surveyed and platted "R. L. HAYES 2ND ADDITION", Wichita, Sedgwick County, Kansas and that the accompanying plat is a true and correct exhibit of the property surveyed, described as follows:

Beginning at a point in the South line and 37.72 feet East of the S.W. corner of the SE1/4 of Section 28, Township 26 South, Range 1 East of the 6th P.M., Sedgwick County, Kansas, said point being in the east Right-of-way line of the Burlington Northern Railroad; thence North along said East Right-of-way line, a distance of 960 feet to a point in the southerly line of the Wichita-Valley Center Flood Control Right-of-way, as condemned in Case No. A-41035; thence Northeasterly along the south line of said Right-of-way, a distance of 531.95 feet more or less, to a point in the east line of the west 32.0 acres of the SE1/4 of said Section 28; thence south along the east line of the west 32.0 acres of said SE1/4, a distance of 1165.62 feet to a point in the south line of said SE1/4; thence west 487.32 feet to the point of beginning.

Existing Public easements and dedications being vacated by virtue of K.S.A. 12-512(b).

Savoy, Ruggles & Bohm, P.A.

Date _____

Mark A. Savoy R.L.S. #788
Surveyor

Know all men by these presents that we, the undersigned have caused the land described in the surveyor's certificate to be platted into a Lot to be known as "R. L. HAYES 2ND ADDITION", Wichita, Sedgwick County, Kansas. The utility easements are hereby granted as indicated for the construction and maintenance of all public utilities. Access Controls are hereby granted to the City of Wichita (as indicated on the face of the plat), with the location of openings to be approved by the City Engineer.

Robert L. Hayes, Trustee of the Robert L. Hayes
Revocable Trust, Dated April 23, 1992

Robert L. Hayes

State of Kansas) SS
Sedgwick County)

The foregoing instrument acknowledged before me, this _____ day of _____, 1998, by Robert L. Hayes, Trustee of the Robert L. Hayes Revocable Trust, Dated April 23, 1992.

Notary Public

My App't. Exp. _____

We, the undersigned, holders of a mortgage on the above described property do hereby consent to this plat of "R. L. HAYES 2ND ADDITION", Wichita, Sedgwick County, Kansas.

NationsBank N.A.

This plat of "R. L. HAYES 2ND ADDITION", Wichita, Sedgwick County, Kansas, has been submitted to and approved by the Wichita-Sedgwick County Metropolitan Area Planning Commission, Wichita, Kansas.

Dated this _____ day of _____, 1998.

Wichita-Sedgwick County Metropolitan Area Planning Commission

Richard E. Lopez
Chairman

Marvin S. Krout
Secretary

This plat approved and all dedications shown hereon, accepted by the City Council of the City of Wichita, Kansas, this _____ day of _____, 1998.

Bob Knight
Mayor

Pat Burnett
City Clerk

Entered on transfer record this _____ day of _____, 1998.

James Alford
County Clerk

State of Kansas) SS
Sedgwick County)

This is to certify that this plat has been filed for record in the office of the Register of Deeds, this _____ day of _____, 1998, at _____ o'clock _____ M.; and is duly recorded.

Bill Meek
Register of Deeds

Linda Kizzire
Deputy

State of Kansas) SS
Sedgwick County)

The foregoing instrument acknowledged before me, this _____ day of _____, 1998, by _____ of NationsBank N.A., on behalf of the bank.

Notary Public

My App't. Exp. _____