

STORM WATER SEWER IMPROVEMENTS TO SERVE

**LOT 4, BLOCK A  
FOUR H ADDITION**

**CITY OF WICHITA, KANSAS**

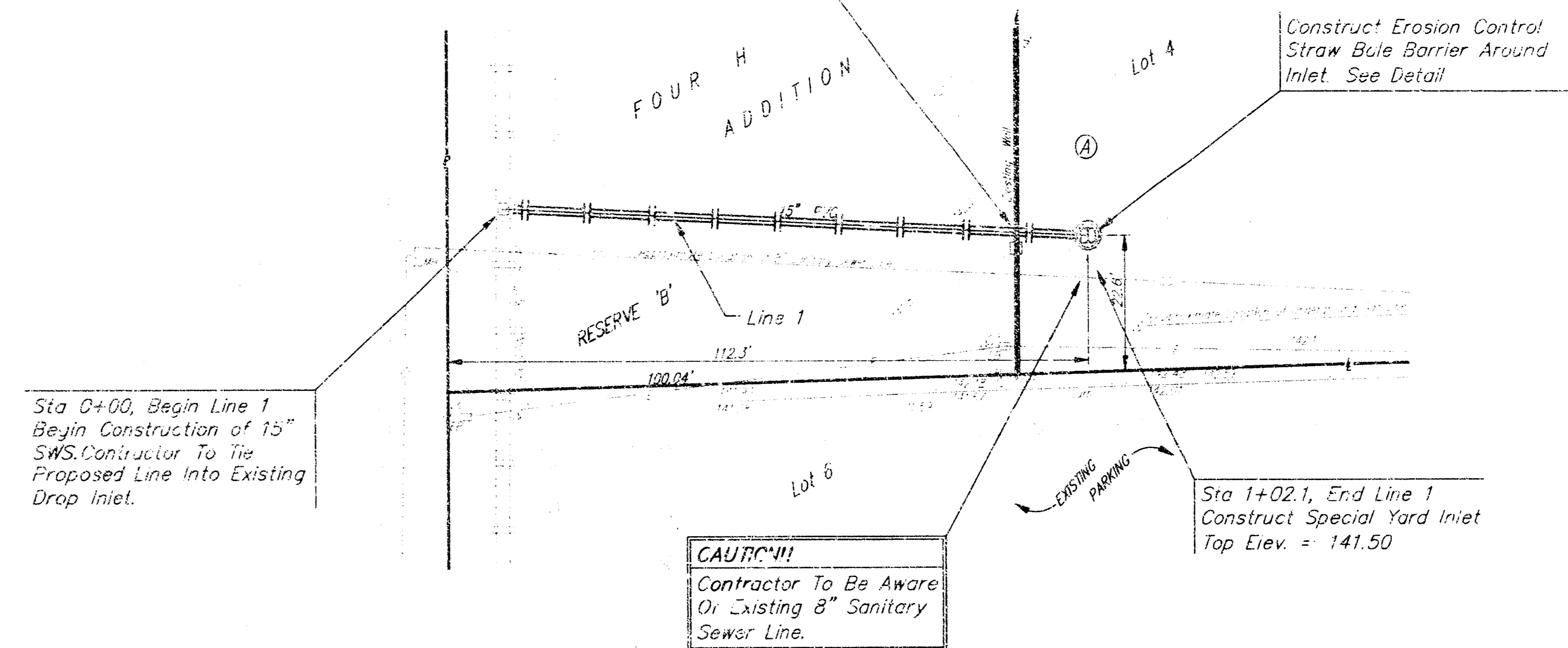
Michael E. Lindebak, P.E. City Engineer

Private Project Number

**833 PPS (607861)**

**CAUTION!!**  
Contractor To Use Extreme  
Caution Installing Pipe  
Under Existing Wall

Scale: 1" = 20' Horizontal  
1" = 5' Vertical  
● = Iron



**GENERAL NOTES:**

1. Contractor will be required to provide notice to utility companies a minimum of twenty-four (24) hours prior to any excavation, as follows:

Kansas One-Call 687-2470

The Contractor must notify the following in case of an emergency:

Cablevision 262-4270  
or 263-2061  
K.G.E. Gas Service Company 383-8650  
Kansas Gas & Electric Company 383-8600  
Peoples Natural Gas Company 942-7100  
Southwestern Bell Telephone Company 1-571-2611  
City of Wichita Water Department 262-4908  
City of Wichita Sewer Maintenance 268-4071

2. Underground utility service lines and overhead utility pole lines are to be adjusted as necessary by others prior to construction unless the plans specifically call for their adjustment by the Contractor or unless the plans specifically identify a utility to be adjusted by its owner during construction. Existing utilities and their location, as shown on the plans, represent the best information obtainable for design. The Contractor will be required to work around existing utilities within the right-of-way which do not conflict with proposed construction.

3. Contractor shall not start work on the project until the project inspector is assigned to the project and is present on the site. Any work done without inspection will be required to be uncovered for inspection.

4. Trees and shrubs in public right-of-way which are in direct conflict with proposed new construction shall be removed by the Contractor with the Engineer's approval. Trees and shrubs which are not in direct conflict with proposed new construction shall be saved and protected from damage.

5. The Contractor shall be responsible for preserving property irons. The Contractor will be required to re-establish any property irons which are damaged or destroyed by his construction operations. Such irons shall be re-established by a licensed land surveyor in accordance with state laws.

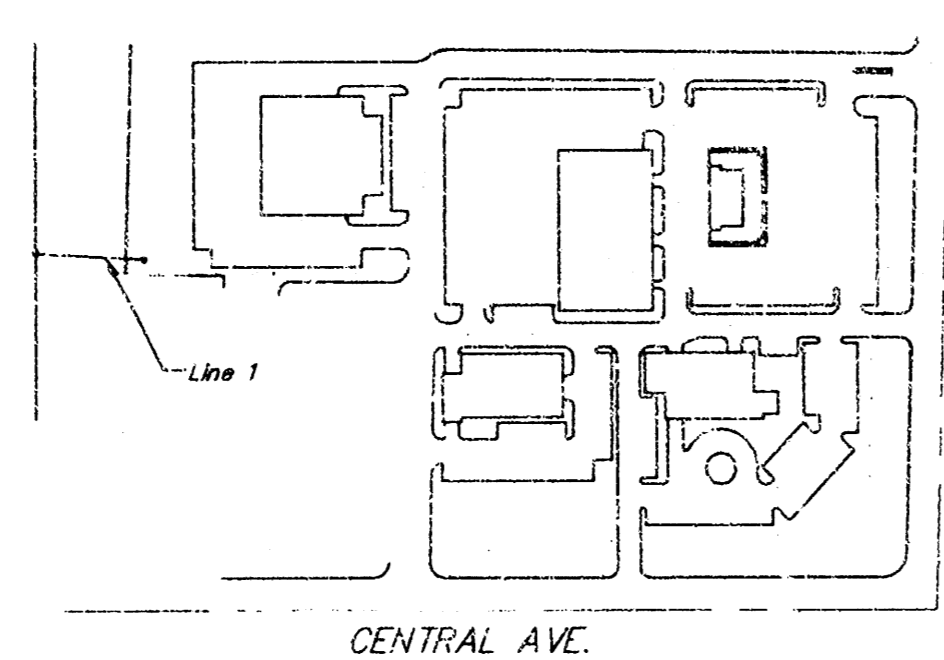
6. All areas disturbed by construction operations shall be seeded with rye grass at a rate of 300 lbs/acre immediately following construction in that area. Prior to seeding, area shall be prepared per City specs.

**BENCHMARK:**

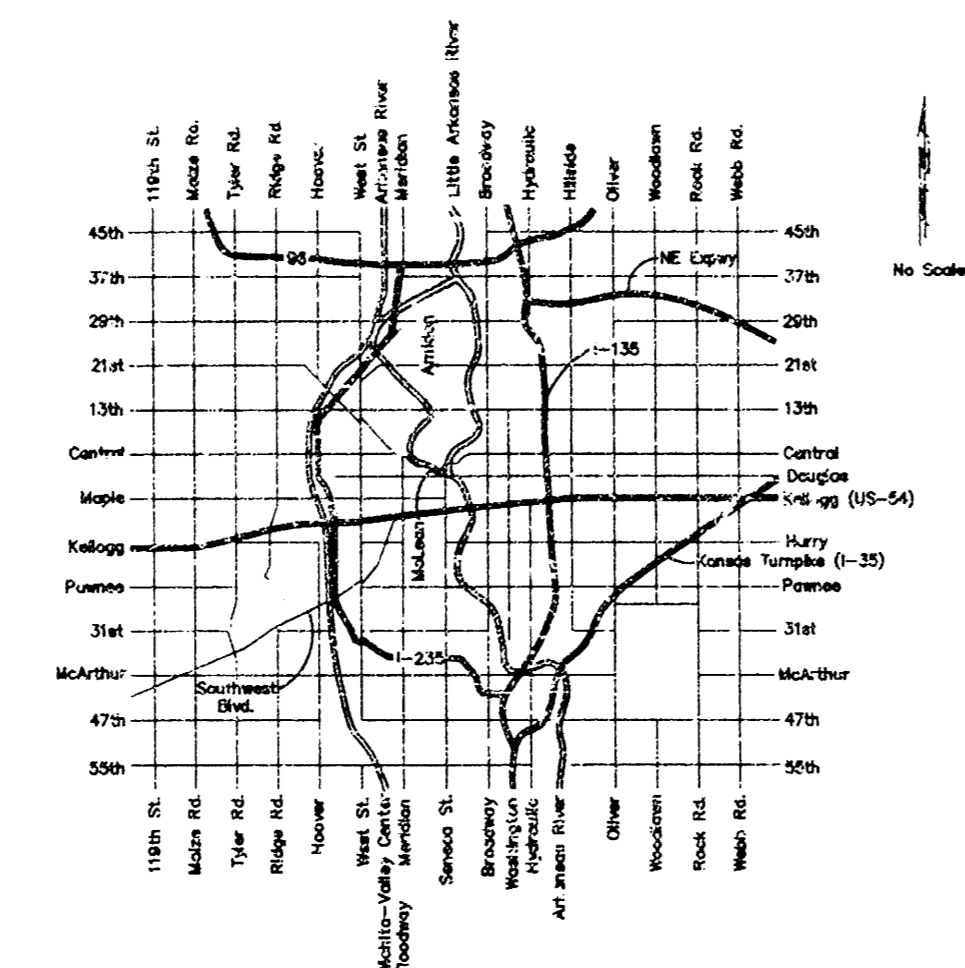
Top of KVE Capped Rebar Located at the NW Corner Lot 5, Block 4, Four H Addition  
Elevation = 142.57 (City Datum)

**INDEX:**

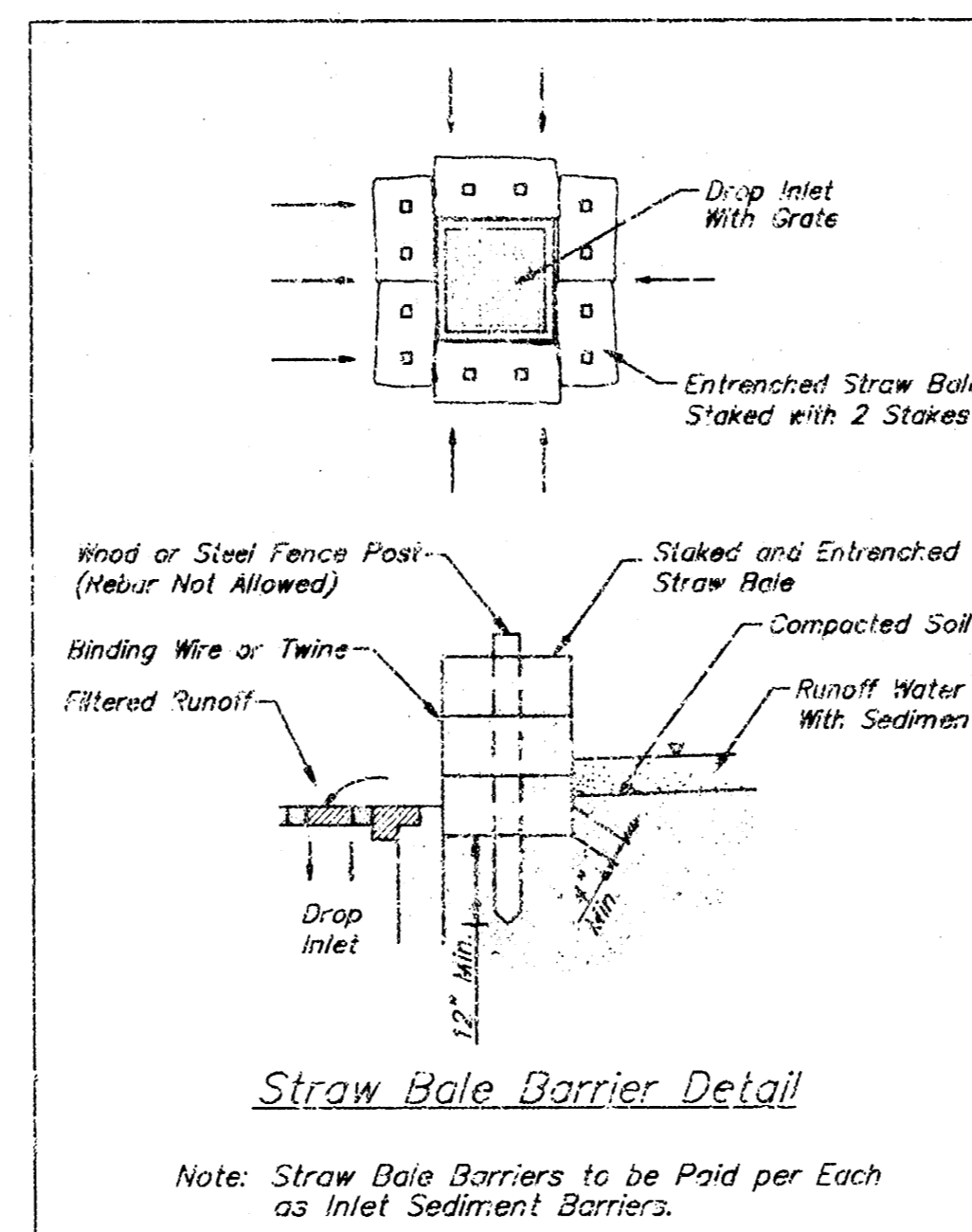
- 1 Line 1
- 2 Special Yard Inlet Detail
- 3 Copy of Four H Add. Plat



**KEY MAP**



**LOCATION MAP**



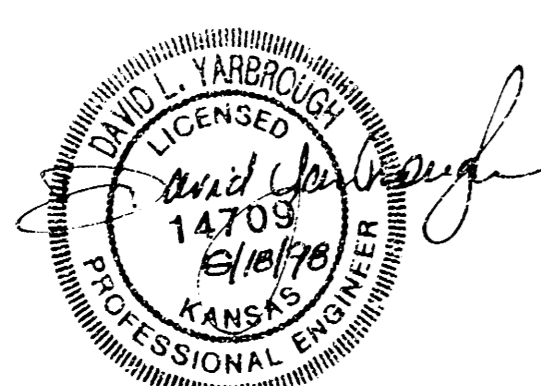
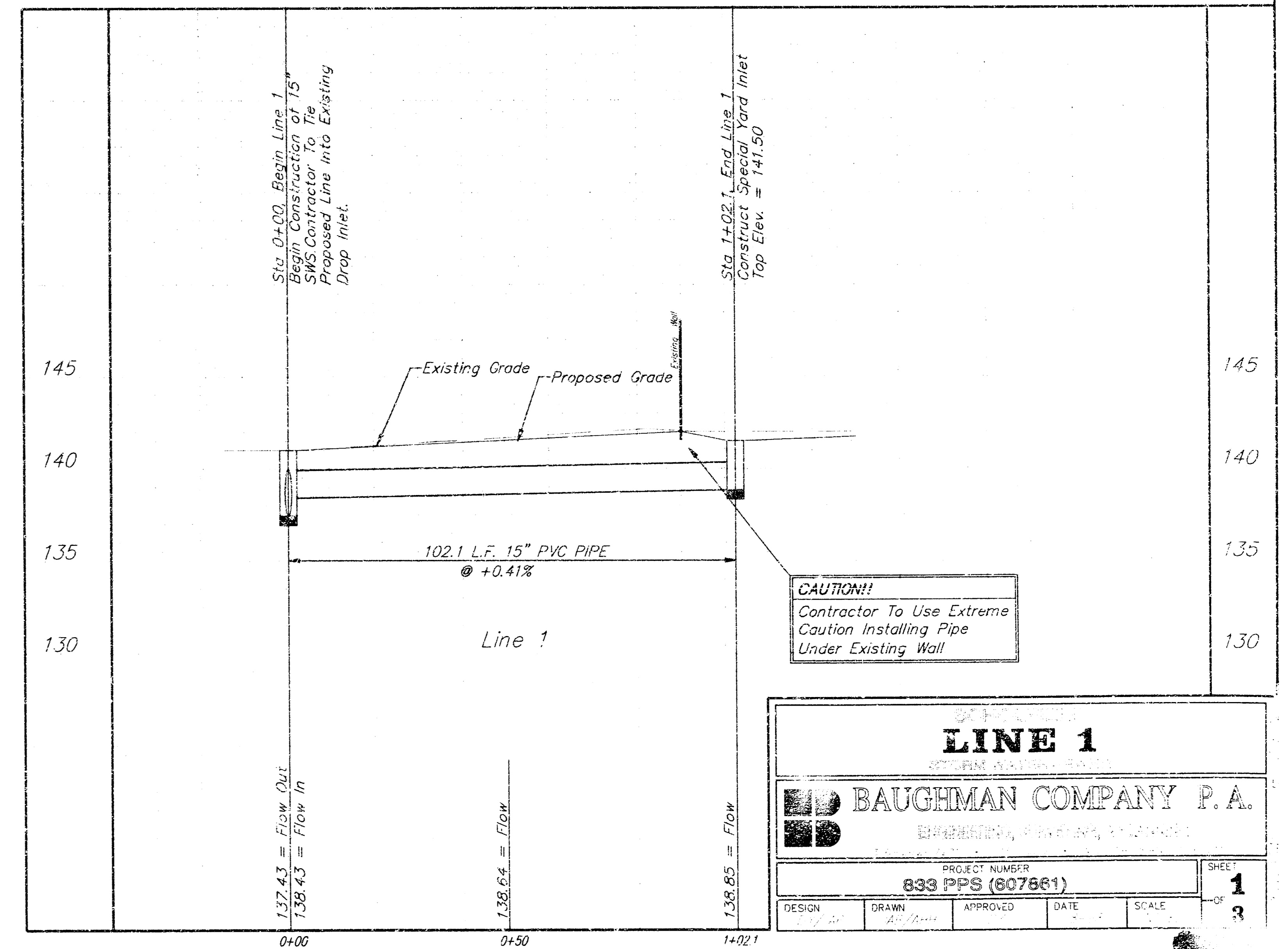
**Straw Bale Barrier Detail**

APPROVED AS NOTED  
BY CITY ENGINEER OF WICHITA

Storm Sewers 8/19/98, VRH

**NOTE TO CONTRACTORS**

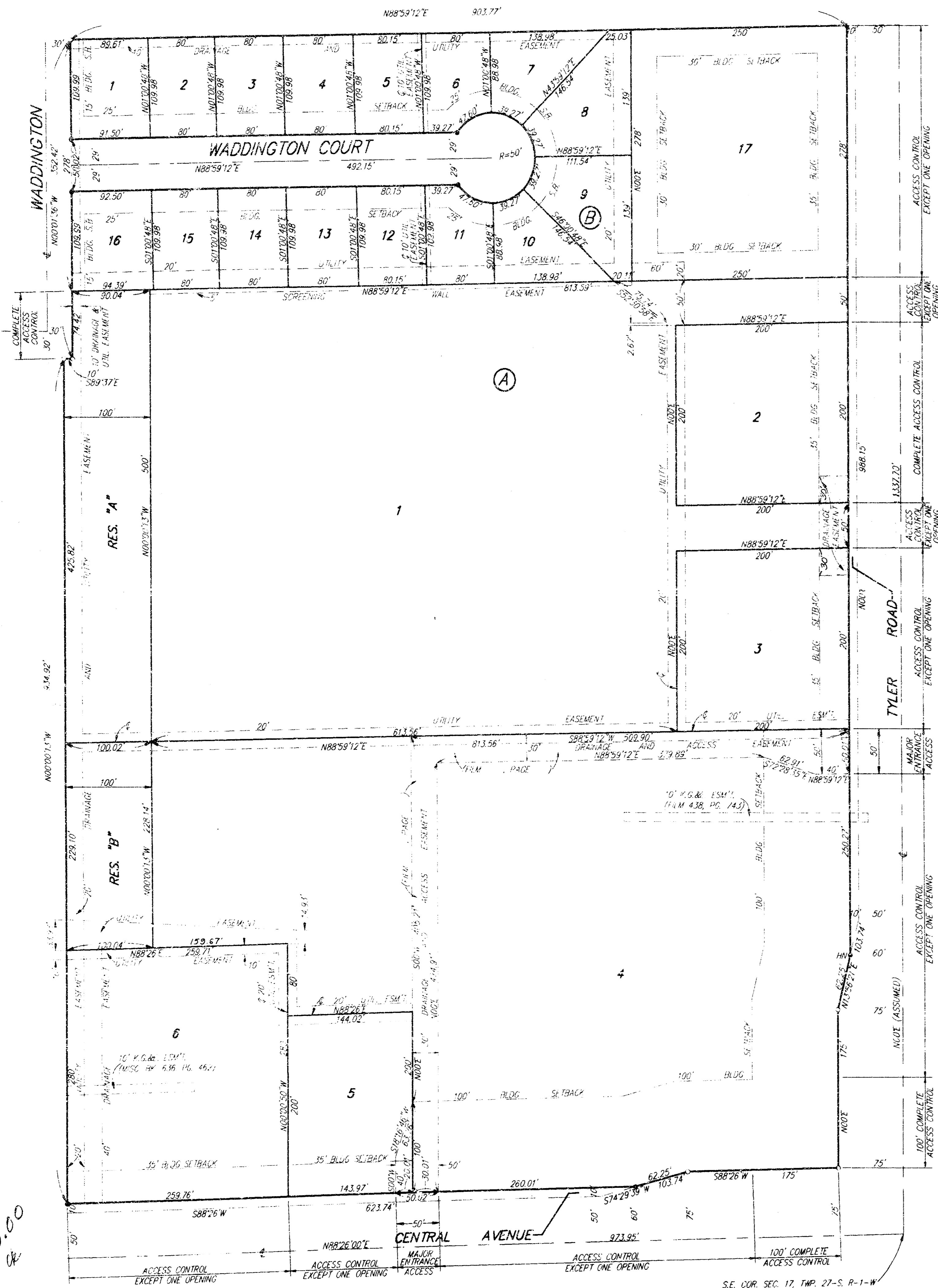
Inspection and testing for this project is to be provided by a Licensed Consulting Engineering Firm under contract with the Owner/Developer. Said inspection to be in accordance with the City of Wichita standard construction engineering practices and certified by a Licensed Professional Engineer. No work shall be performed in dedicated easements or public right-of-way by the Contractor without such inspection nor shall any work be commenced without written authorization by the City Engineer. All Construction and Materials shall comply with the City of Wichita Specifications and Standards (on file and available in the City Engineer's Office).





# FOUR H ADDITION

WICHITA, SEDGWICK COUNTY, KANSAS



SCALE: 1" = 80'  
 ○ = 1/2" IRON (FOUND)  
 ● = 1/2" REBAR  
 W = "BAUGHMAN" CAP (SET)  
 H = "HILTI" NAIL (SET)

NOTE:  
 BUILDING SETBACK LINES WITHIN  
 BLOCK "A" AS PER FOUR H  
 COMMUNITY UNIT PLAN, DP-209.

State of Kansas) SS We, Baughman Company, P.A., Surveyors in  
 Sedgwick County) and state do hereby certify that we have surveyed  
 and plotted "FOUR H ADDITION", Wichita, Sedgwick County, Kansas  
 and that the accompanying plat is a true and correct exhibit of the  
 property surveyed, described as and being a replat of the following:  
 All of Lot 1, 4-H Club Addition, Wichita, Sedgwick County, Kansas and  
 all of Lot 1, 4-H Club 2nd Addition, Wichita, Sedgwick County, Kansas.

All being situated in the SE1/4 of Sec. 17, Twp. 27-S, R-1-W of  
 the 6th P.M., Sedgwick County, Kansas.  
 Existing public easements and dedications being vacated by  
 virtue of KSA 12-512(b).

Baughman Company, P.A.

Date 3/3/93



Gregory F. Severns  
 Surveyor

Know all men by these presents that we,  
 the undersigned, have caused the land described in this surveyors  
 certificate to be platted into lots, blocks, streets and reserves to be  
 known as "FOUR H ADDITION", Wichita, Sedgwick County, Kansas.  
 Reserve "A" and Reserve "B" are hereby reserved for landscaping,  
 open space, screen wall construction, and drainage purposes.  
 Reserve "A" shall be owned and maintained by the owner of Lot 1.  
 Reserve "B" shall be owned and maintained by the owner of Lot 4.  
 The streets are hereby dedicated to and for the use of the public. The  
 utility easements are hereby granted as indicated for the construction and  
 maintenance of all public utilities. The drainage easements are hereby  
 granted as indicated for drainage purposes. The drainage and utility easements  
 are hereby granted as indicated for drainage purposes and for the  
 construction and maintenance of all public utilities. The access and  
 drainage easements are hereby granted for access purposes and for  
 drainage purposes. The screening wall easement is hereby granted  
 as indicated for screening purposes. Access controls as depicted  
 on the face of the plat are hereby granted to the City of Wichita,  
 Kansas. The permitted entrance locations shall be as determined  
 by the City Engineer of the City of Wichita, Kansas. Building Setback  
 Lines within Block "A" as per Four H Community Unit Plan, DP-209.

T V Realty, L. L. C.

Stephen J. Mardis  
 Manager

State of Kansas) SS The foregoing instrument acknowledged be-  
 fore me, this 3 day of March, 1993, by Stephen J. Mardis,  
 Manager of T V Realty, L. L. C., on behalf of the Company.

My App'l. Exp. 2-3-95  
 Notary Public

We, the undersigned, holders of a mortgage  
 on the above described property do hereby consent to this plat of  
 "FOUR H ADDITION", an Addition to Wichita, Sedgwick County, Kansas.

Bank IV

Tim McGuigan  
 Vice President

State of Kansas) SS The foregoing instrument acknowledged be-  
 fore me this 4 day of March, 1993, by Tim McGuigan,  
 Vice President of Bank IV, on behalf of the bank.

My App'l. Exp. 1/1/96  
 Notary Public

This plat of "FOUR H ADDITION", Wichita,  
 Sedgwick County, Kansas, has been submitted to and approved by  
 the Wichita-Sedgwick County Metropolitan Area Planning Commission,  
 Wichita, Kansas.  
 Dated this 23 day of February, 1993.  
 Wichita-Sedgwick County Metropolitan Area Planning Commission.

L. D. Breckenridge, Jr.  
 Chairman

Marvin S. Kraut  
 Secretary

This plat approved and all dedications  
 shown hereon accepted by the City Council of the City of Wichita,  
 Kansas, this 23rd day of March, 1993.

Frank M. Ojile  
 Mayor

Pat Burnett  
 Deputy City Clerk

Entered on transfer record this 1st day  
 of April, 1993.

Jason E. Crocke-1-Spoon  
 County Clerk

#1219652

State of Kansas) SS This is to certify that this plat has been  
 filed for record in the office of the Register of Deeds, this 13 day  
 of April, 1993, at 11:00 o'clock A.M. and is duly  
 recorded.

Pat Kettler  
 Register of Deeds

Ed Resa  
 Deputy

2000  
 OK

APR 03 1993

STORM WATER SEWER IMPROVEMENTS TO SERVE

**LOT 4, BLOCK A  
FOUR H ADDITION**

**CITY OF WICHITA, KANSAS**

Michael E. Lindebak, P.E. City Engineer

Private Project Number

833 PPS (607881)

Scale: 1" = 20' horizontal  
1" = 5' vertical  
• = iron

**GENERAL NOTES:**

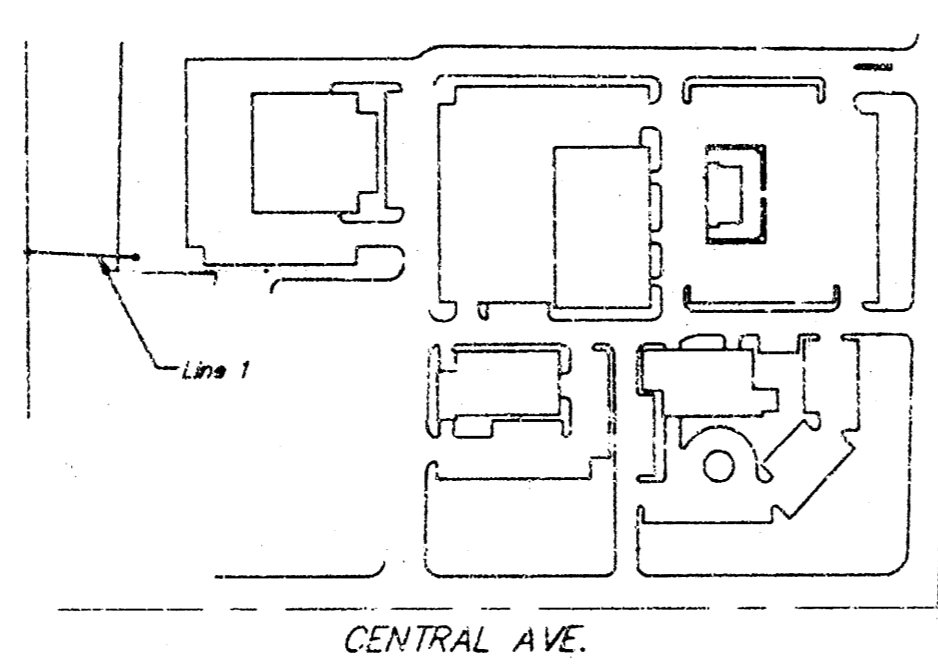
- Contractor will be required to provide notice to utility companies a minimum of twenty-four (24) hours prior to any excavation, as follows:  
 Kansas One-Call 587-2470  
 The Contractor must notify the following in case of an emergency:  
 Cablevision 262-4270  
 or 263-2061  
 K.C.E. Gas Service Company 383-8600  
 Kansas Gas & Electric Company 383-8600  
 Peoples Natural Gas Company 942-7600  
 Southwestern Bell Telephone Company 1-371-2611  
 City of Wichita Water Department 283-4302  
 City of Wichita Sewer Maintenance 268-4671
- Underground utility service lines and overhead utility pole lines are to be adjusted as necessary by others prior to construction, unless the plans specifically call for their adjustment by the Contractor or unless the plans specifically identify a utility to be adjusted by its owner during construction. Existing utilities and their location, as shown on the plans, represent the best information obtainable for design. The Contractor will be required to work around existing utilities within the right-of-way which do not conflict with proposed construction.
- Contractor shall not start work on the project until the project inspector is assigned to the project and is present on the site. Any work done without inspection will be required to be uncovered for inspection.
- Trees and shrubs in public right-of-way which are in direct conflict with proposed new construction shall be removed by the Contractor with the Engineer's approval. Trees and shrubs which are not in direct conflict with proposed new construction shall be saved and protected from damage.
- The Contractor shall be responsible for preserving property irons. The Contractor will be required to re-establish any property irons which are damaged or destroyed by his construction operations. Such irons shall be re-established by a licensed land surveyor in accordance with state laws.
- All areas disturbed by construction operations shall be seeded with rye grass at a rate of 300 lbs/acre immediately following construction in that area. Prior to seeding, area shall be prepared per City specs.

**BENCHMARK:**

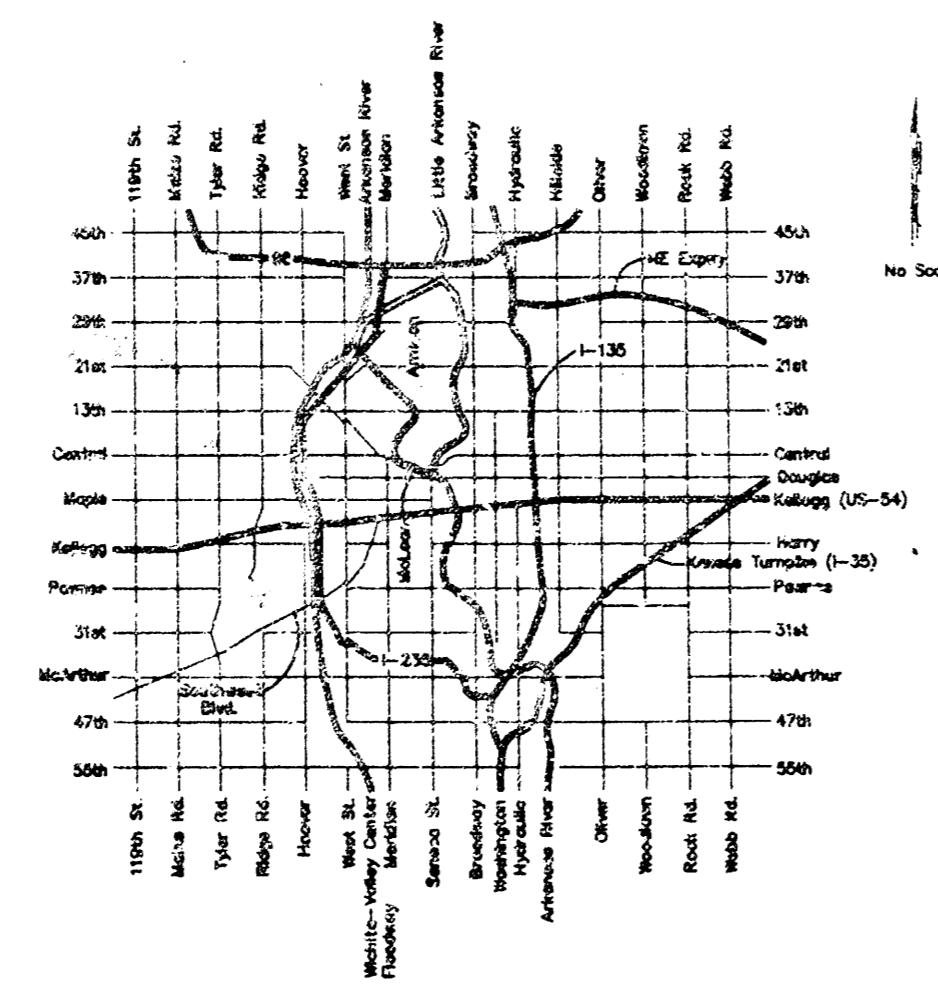
Top of KVE Capped Rebar Located at the NW Corner Lot 5, Block 4, Four H Addition.  
Elevation = 142.57 (City Datum)

**INDEX:**

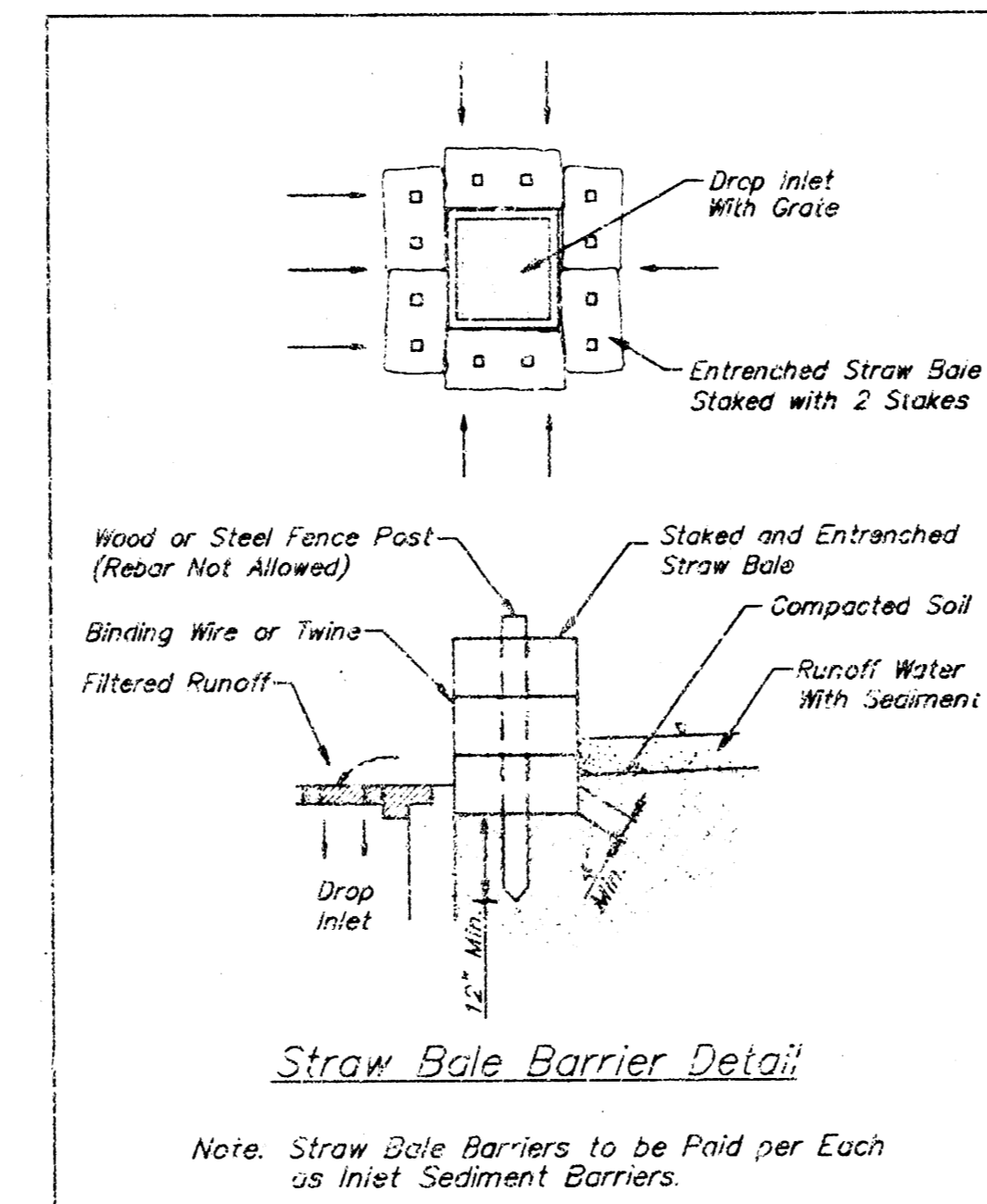
- Line 1
- Special Yard Inlet Detail
- Copy of Four H Add. Plat



KEY MAP



LOCATION MAP

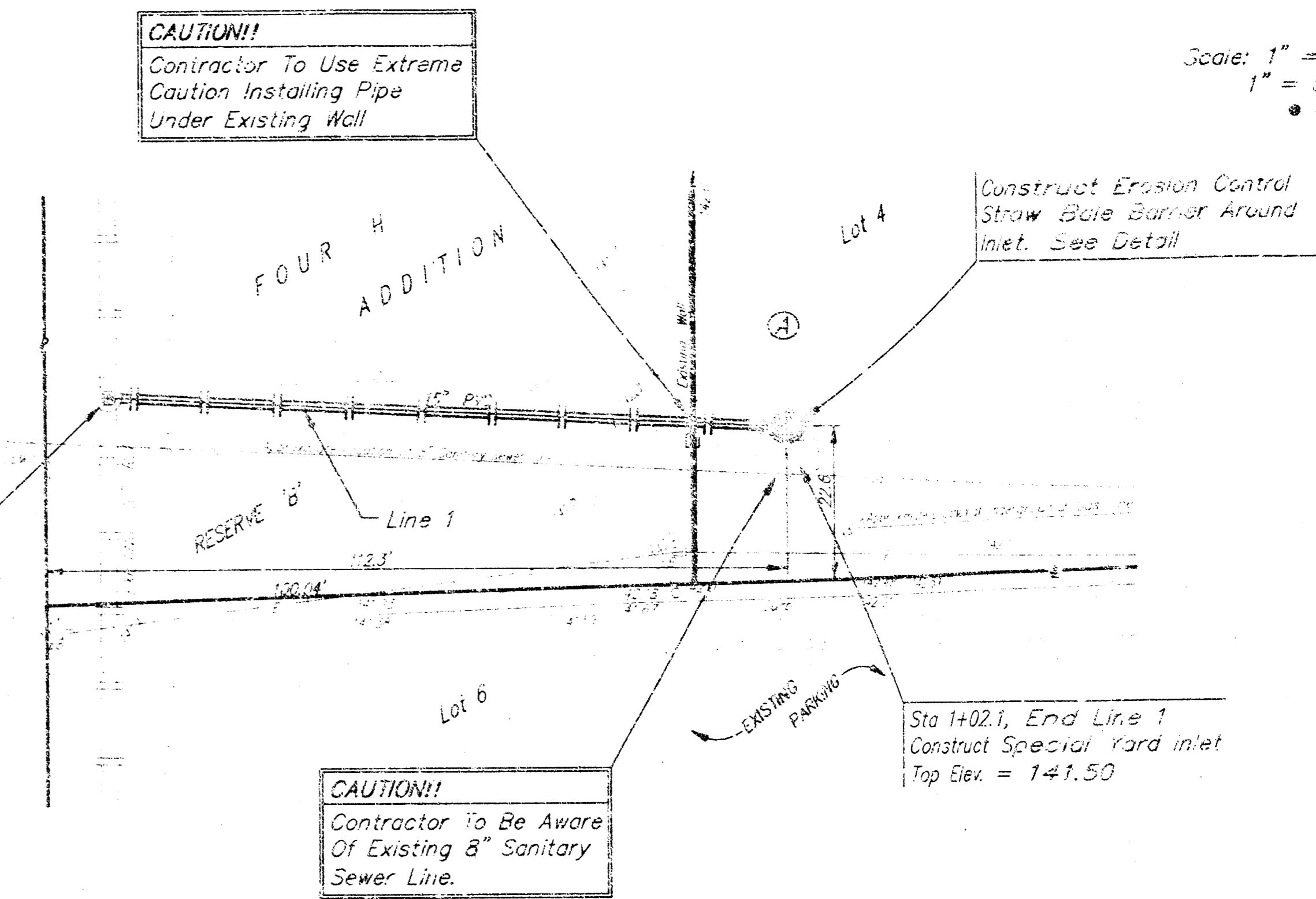


Straw Bale Barrier Detail

Note: Straw Bale Barriers to be Paid per Each as Inset Sediment Barriers.

APPROVED AS NOTED  
BY CITY ENGINEER OF WICHITA  
Storm Sewers 8/19/98, VRH  
NOTE TO CONTRACTORS  
Inspection and testing for this project is to be provided by a Licensed Consulting Engineering Firm under contract with the Owner/Developer. Said inspection to be in accordance with the City of Wichita standard construction engineering practices and certified by a Licensed Professional Engineer. No work shall be performed in dedicated easements or public right-of-way by the Contractor without such inspection nor shall any work be commenced without written authorization by the City Engineer. All construction and Materials shall comply with the City of Wichita Specifications and Standards (on file and available in the City Engineer's Office).

Booked  
E-2  
8/14/03  
RDL

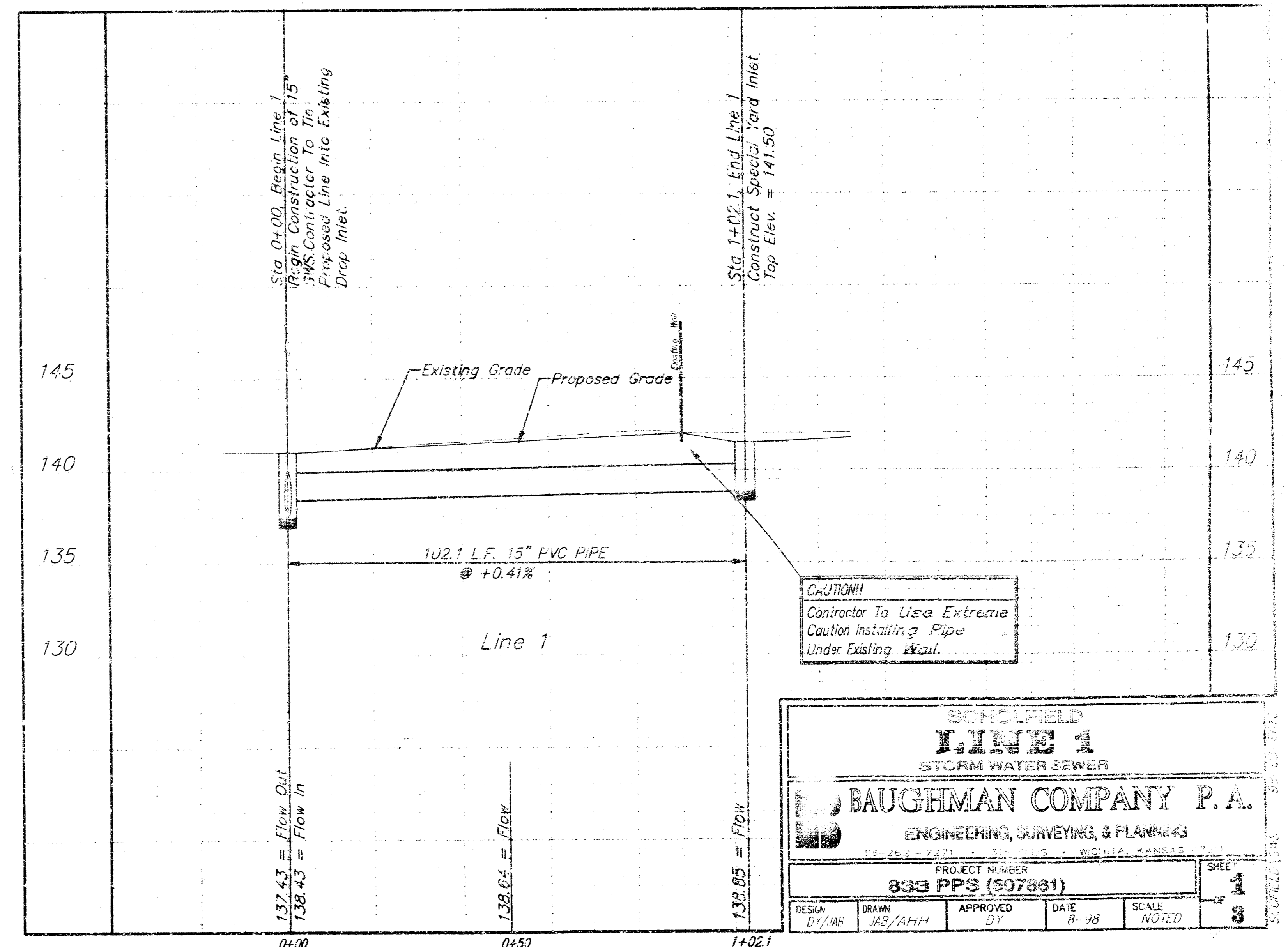


Sta 0+00, Begin Line 1  
Begin Construction of 15" SWS. Contractor To Tie Proposed Line into Existing Drop Inlet.

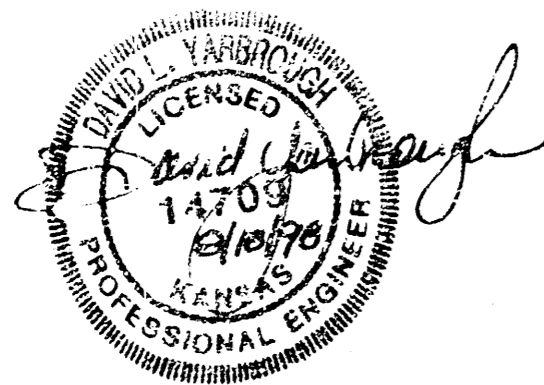
CAUTION!  
Contractor To Be Aware Of Existing 8" Sanitary Sewer Line.

Construct Erosion Control Straw Bale Barrier Around Inlet. See Detail

Sta 1+02.1, End Line 1  
Construct Special Yard Inlet  
Top Elev. = 141.50



CAUTION!  
Contractor To Use Extreme Caution Installing Pipe Under Existing Wall.

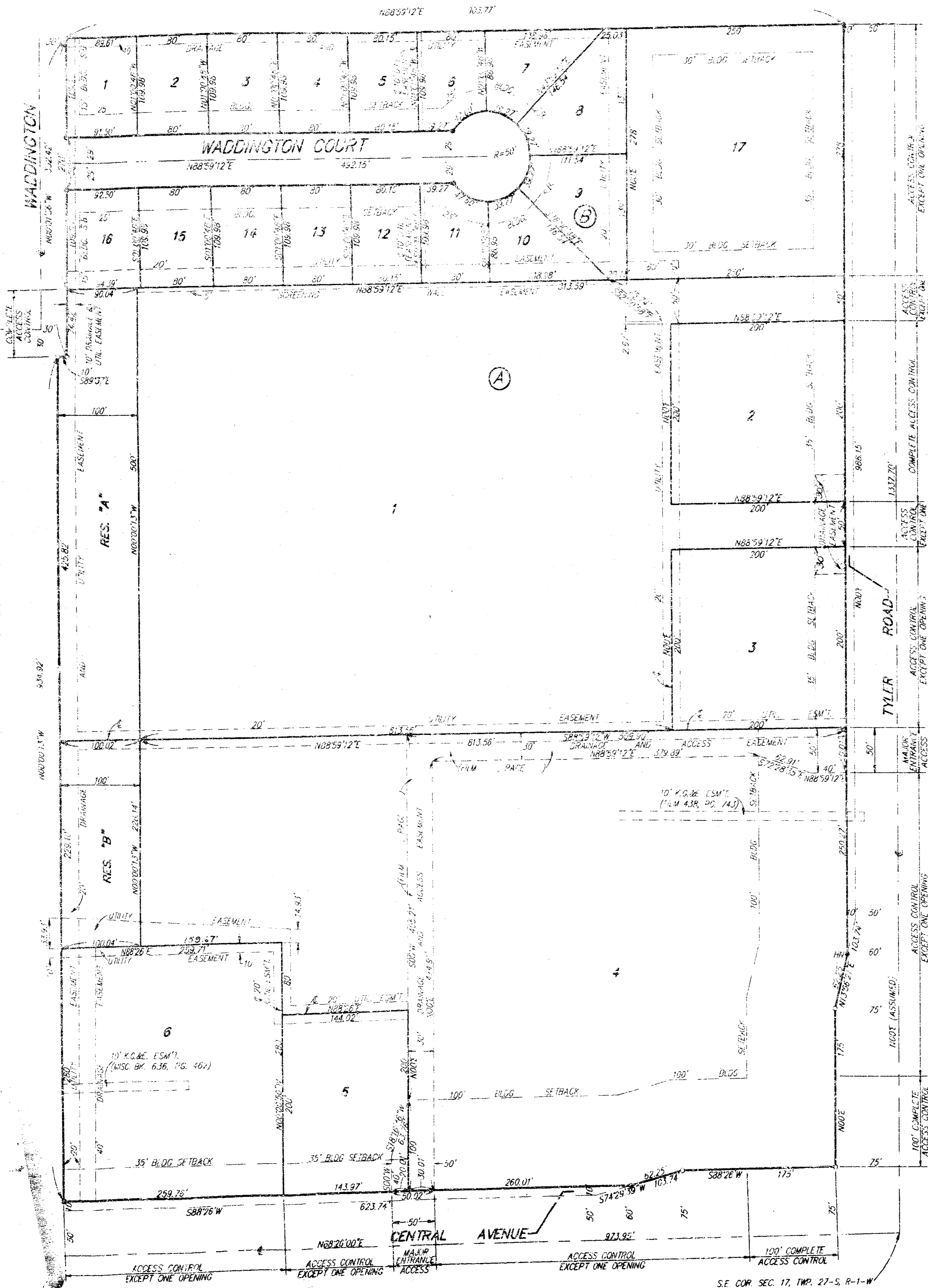


SCHEIDT & BOND  
**PAINE I**  
STORM WATER SEWER  
**BAUGHMAN COMPANY P.A.**  
ENGINEERING, SURVEYING, & PLANNING  
PROJECT NUMBER: 833 PPS (607881)  
SHEET 1 OF 3  
DESIGN: D1/SHH DRAWN: MS/AMH APPROVED: DT DATE: 8-98 SCALE: NOTED



# FOUR H ADDITION

WICHITA, SEDGWICK COUNTY, KANSAS



State of Kansas) SS We, Baughman Company, P.A., Surveyors in  
Sedgwick County) and state do hereby certify that we have surveyed  
and platted "FOUR H ADDITION", Wichita, Sedgwick County, Kansas  
and that the accompanying plot is a true and correct exhibit of the  
property surveyed, described as and being a replat of the following:  
All of Lot 1, 4-H Club Addition, Wichita, Sedgwick County, Kansas and  
all of Lot 1, 4-H Club 2nd Addition, Wichita, Sedgwick County, Kansas.

All being situated in the NE 1/4 of Sec. 17, Twp. 27-S, R-1-W of  
the 6th P.M., Sedgwick County, Kansas.  
Existing public easements and dedications being vacated by  
virtue of KSA 12-512(b).

Baughman Company, P.A.

Date 3/3/93



Gregory F. Sewerns Surveyor  
Gregory F. Sewerns

Know all men by these presents that we, the undersigned, have caused the land described in the surveyor's certificate to be platted into lots, blocks, streets and reserves to be known as "FOUR H ADDITION", Wichita, Sedgwick County, Kansas. Reserve "A" and Reserve "B" are hereby reserved for landscaping, open space, screen wall construction, and drainage purposes. Reserve "A" shall be owned and maintained by the owner of Lot 1. Reserve "B" shall be owned and maintained by the owner of Lot 4. The streets are hereby dedicated to and for the use of the public. The utility easements are hereby granted as indicated for the construction and maintenance of all public utilities. The drainage easements are hereby granted as indicated for drainage purposes. The drainage and utility easements are hereby granted as indicated for drainage purposes and for the construction and maintenance of all public utilities. The access and drainage easements are hereby granted for access purposes and for drainage purposes. The screening wall easement is hereby granted as indicated for screening purposes. Access controls as depicted on the face of the plat are hereby granted to the City of Wichita, Kansas. The permitted entrance locations shall be as determined by the City Engineer of the City of Wichita, Kansas. Building Setback Lines within Block "A" as per Four H Community Unit Plan, DP-209.

T V Realty, L. L. C.

Stephen J. Morris Manager  
Stephen J. Morris

State of Kansas) SS The foregoing instrument acknowledged be-  
fore me, this 3rd day of March, 1993, by Stephen J. Morris,  
Sedgwick County) Manager of T V Realty, L. L. C., on behalf of the Company.

Richard C. Long Notary Public  
My App'l Exp. 2-3-05

We, the undersigned, holders of a mortgage on the above described property do hereby consent to this plat of "FOUR H ADDITION", an Addition to Wichita, Sedgwick County, Kansas.

Bank IV  
Tim McGuigan Vice President  
Tim McGuigan

State of Kansas) SS The foregoing instrument acknowledged be-  
fore me this 3rd day of March, 1993, by Tim McGuigan  
Sedgwick County) Vice President of Bank IV, on behalf of the bank.

Barbara A. Brown Notary Public  
My App'l Exp. 1/1/96

This plat of "FOUR H ADDITION", Wichita, Sedgwick County, Kansas, has been submitted to and approved by the Wichita-Sedgwick County Metropolitan Area Planning Commission, Wichita, Kansas.  
Dated this 25th day of February, 1993.  
Wichita-Sedgwick County Metropolitan Area Planning Commission.

L. O. Green Chairman  
L. O. Green

W. S. Kroll Secretary  
W. S. Kroll

This plat approved and all dedications shown hereon accepted by the City Council of the City of Wichita, Kansas, this 2nd day of April, 1993.

Frank M. Rye Mayor  
Frank M. Rye

Pat Burnett Deputy City Clerk  
Pat Burnett

Entered on transfer record this 1st day of April, 1993.

W. E. Crockett-Spoon County Clerk  
W. E. Crockett-Spoon

#1279652

State of Kansas) SS This is to certify that this plat has been  
Sedgwick County) filed for record in the office of the Register of Deeds, this 1st day  
of APRIL, 1993, at 11:00 o'clock A.M. and is duly  
recorded.

Pat Kettler Register of Deeds  
Pat Kettler

Ed Reser Deputy  
Ed Reser