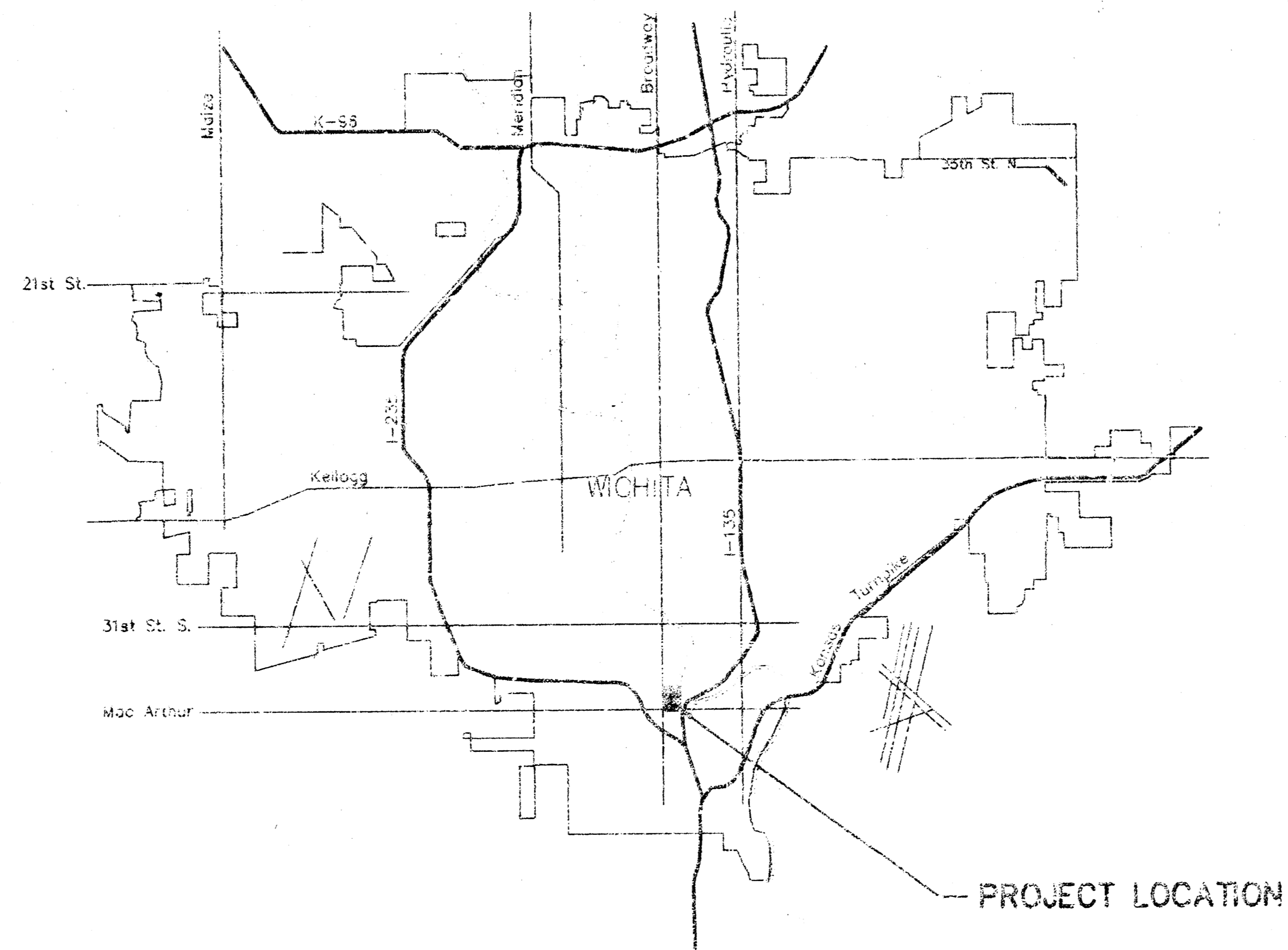
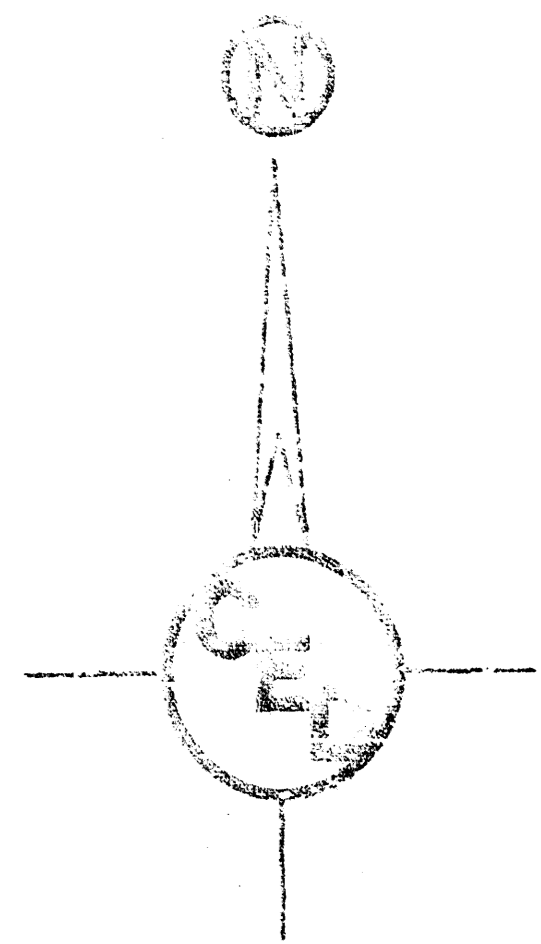


STORM WATER SEWER IMPROVEMENTS
FOR
BARNUM ADDITION
LOCATED IN THE
THE S.W.1/4, SEC. 9, T.28 S., R.1 E.,
SEDGWICK COUNTY, KANSAS
CITY OF WICHITA PRIV. PROJ. NO. 841 PPS(607861)
MIKE LINDEBAK, P.E., CITY ENGINEER
SEPTEMBER 1998



LOCATION MAP

PROJECT LOCATED IN THE
S.W.1/4, SEC. 9, T.28S., R.1E.
SEDGWICK COUNTY, KANSAS

*Booked
E-2
3/14/03
RDL*



INDEX OF SHEETS

1. Title Sheet
2. Site Plan & General Notes
3. Plan/Profile Sheet
4. Drop Inlet Detail
5. Standard Shallow MH Details

APPROVED AS NOTED
By CITY ENGINEER OF WICHITA

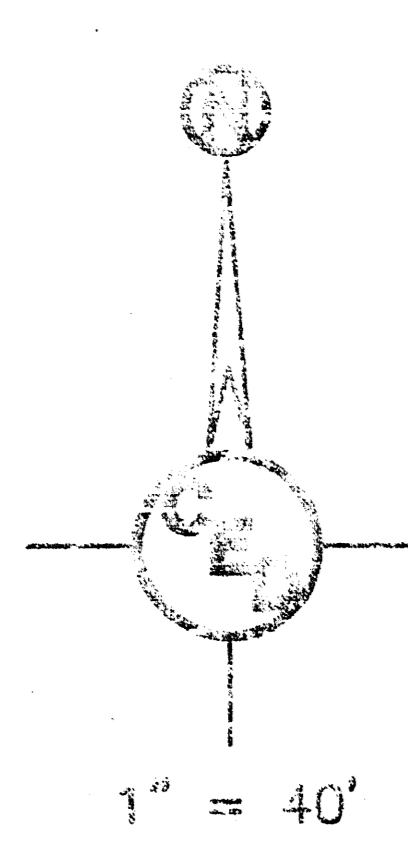
Sanitary Sewers	_____
Storm Sewers	<u>VRH 9/21/98</u>
Driveway Approaches	_____
Water Mains	_____
Paving	_____

NOTE TO CONTRACTOR

INSPECTION AND TESTING FOR THIS PROJECT IS TO BE PROVIDED BY A LICENSED CONSULTING ENGINEERING FIRM UNDER CONTRACT WITH THE OWNER/DEVELOPER. SAID INSPECTION TO BE IN ACCORDANCE WITH THE CITY OF WICHITA STANDARD CONSTRUCTION ENGINEERING PRACTICES AND CERTIFIED BY A LICENSED PROFESSIONAL ENGINEER. NO WORK SHALL BE PERFORMED IN DEDICATED EASEMENTS OR THE PUBLIC RIGHT-OF-WAY BY THE CONTRACTOR WITHOUT SUCH INSPECTION NOR SHALL ANY WORK BE COMMENCED IN DEDICATED EASEMENTS OR PUBLIC RIGHT-OF-WAY WITHOUT WRITTEN AUTHORIZATION BY THE CITY ENGINEER.

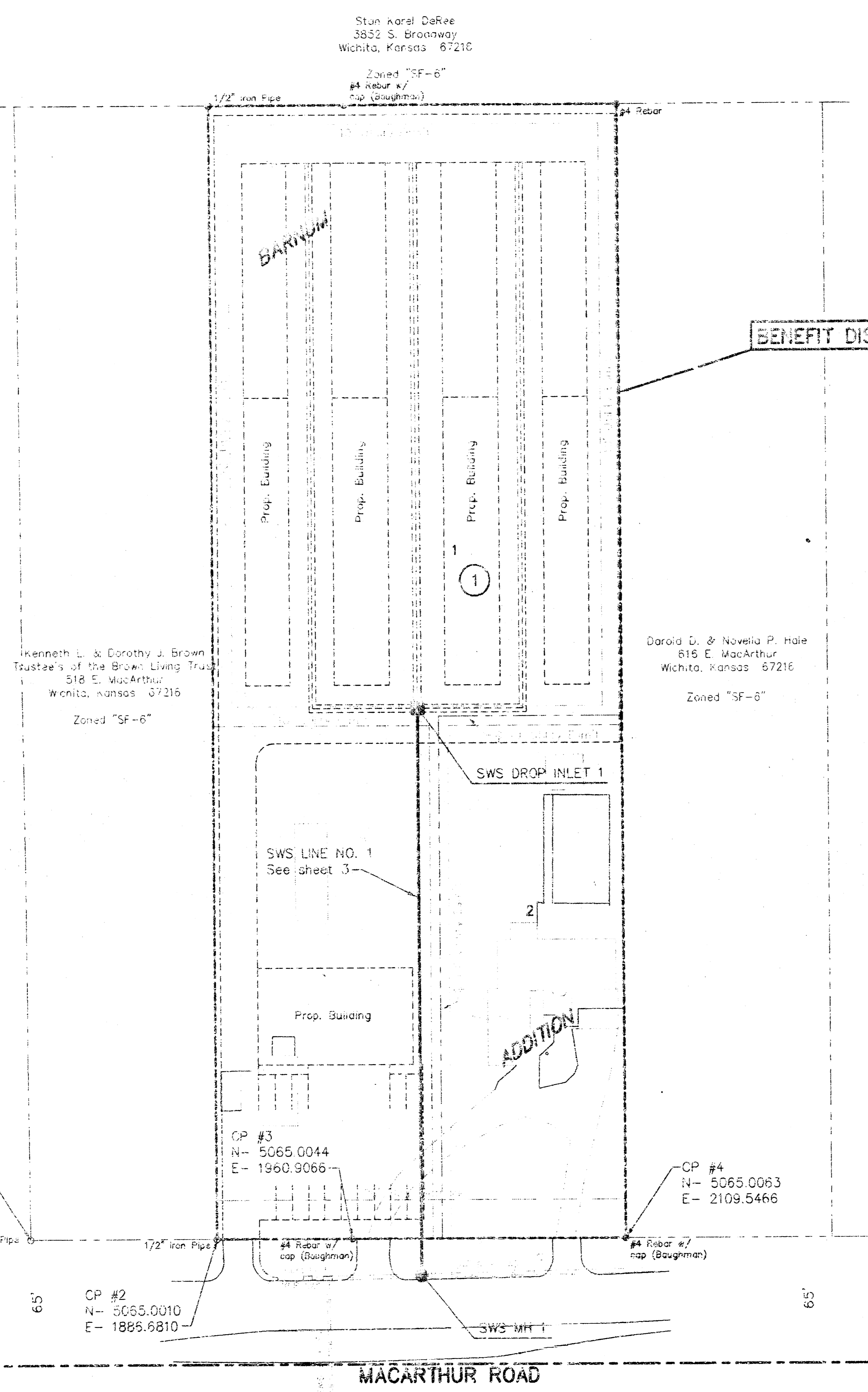
CERTIFIED ENGINEERING DESIGN

488 NORTH OHIO
WICHITA, KANSAS 67216
(316) 262-8308



(U.S. 81) SOUTH BROADWAY

SW COR., SW 1/4 SEC. 9,
 T23S, R1E, OF THE 6TH P.M.



Stan Karl DeRoe
 3832 S. Broadway
 Wichita, Kansas 67210

Zoned "SF-6"
 #4 Rebar #7
 Cap (Boughman)

Kenneth L. & Dorothy J. Brown
 Trustees of the Brown Living Trust
 518 E. MacArthur
 Wichita, Kansas 67216
 Zoned "SF-6"

Darold D. & Novella P. Hale
 816 E. MacArthur
 Wichita, Kansas 67216
 Zoned "SF-6"

CP #1
 N- 5064.9958
 E- 1785.0289

CP #3
 N- 5065.0044
 E- 1960.9066

CP #4
 N- 5065.0063
 E- 2109.5466

CP #2
 N- 5065.0010
 E- 1895.6810

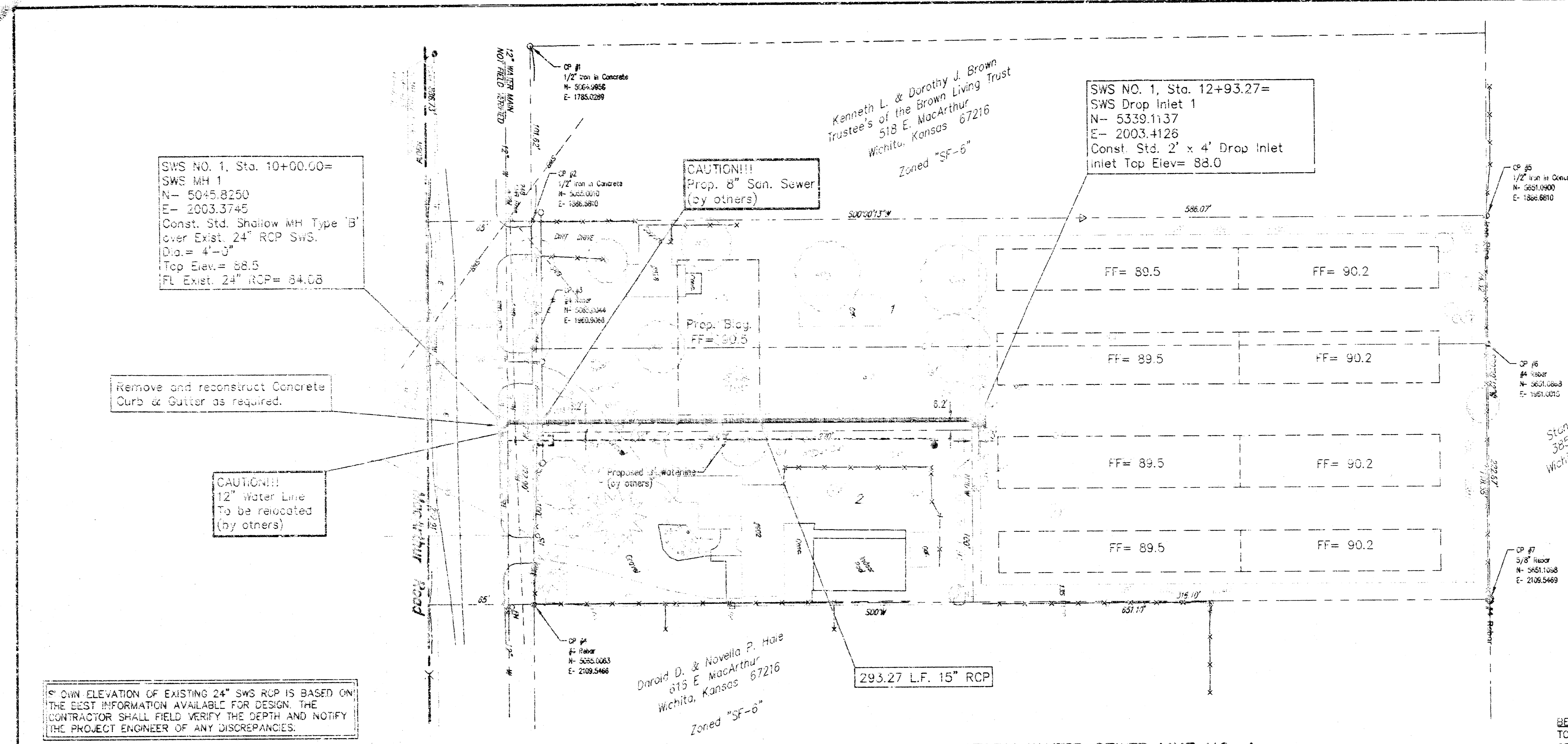
BM- Top of Grader Blade 30' South and 1' West of the
 Southeast Corner of the SW 1/4 Sec. 9, T23S, R1E.
 Elev. = 89.52 (COW Datum)

GENERAL NOTES

1. ALL ELEVATIONS SHOWN ARE BASED ON CITY OF WICHITA DATUM (MEAN SEA LEVEL ELEV. = 1187.4 = CITY DATUM).
2. CONTRACTOR WILL BE REQUIRED TO PROVIDE A MINIMUM ADVANCE NOTICE OF FORTY-EIGHT(48) HOURS TO UTILITY COMPANIES PRIOR TO STARTING ANY EXCAVATION AS FOLLOWS:

KANSAS ONE CALL	687-2470
CABLEVISION	362-4270 OR 263-2681
KOM- GAS	253-7511
KOM- ELECTRIC	264-1141
PEOPLES NATURAL GAS	942-8311
SOUTHWESTERN BELL TELEPHONE	1-571-2511
CITY OF WICHITA WATER DEPARTMENT	263-4908
3. THE CONTRACTOR SHALL NOTIFY PIPELINE COMPANIES AT LEAST 24 HOURS IN ADVANCE OF ANY WORK BEING PERFORMED ABOVE AND/OR ADJACENT TO PIPELINES.
4. THE CONTRACTOR SHALL NOTIFY PROPERTY OWNERS AND/OR TENANTS OF UNDEVELOPED PROPERTY DIRECTLY ADJUTING THE CONSTRUCTION OF THIS PROJECT A MINIMUM OF TEN(10) DAYS ADVANCE NOTICE PRIOR TO START OF CONSTRUCTION.
5. THE CONTRACTOR SHALL BE RESPONSIBLE FOR PRESERVING PROPERTY IRONS. THE CONTRACTOR WILL BE REQUIRED TO RE-ESTABLISH ANY PROPERTY IRONS WHICH ARE DAMAGED OR DESTROYED BY HIS CONSTRUCTION OPERATIONS. SUCH IRONS SHALL BE RE-ESTABLISHED BY A LICENSED LAND SURVEYOR IN ACCORDANCE WITH STATE LAWS.
6. THE CONTRACTOR SHALL RESTORE ALL DITCHES, SWALES, ROAD SHOULDERS, ENTRANCES AND BANK LINES TO THEIR ORIGINAL SLOPES AND GRADES EXCEPT AS SHOWN OTHERWISE.
7. A SAW CUT OF AT LEAST ONE-HALF THE DEPTH OF EXISTING SURFACE COURSES OR ONE-FOURTH THE DEPTH OF THE EXISTING TOTAL PAVEMENT THICKNESS SHALL BE PROVIDED AT LOCATIONS WHERE PROPOSED CONSTRUCTION ABUTS AN EXISTING SURFACE COURSE OR PAVEMENT FOR WHICH PARTIAL REMOVAL OF THAT SURFACE OR PAVEMENT IS REQUIRED, EXCEPT WHEN SUCH SAW CUTS ARE WITHIN THREE (3) FEET OF AN EXISTING JOINT, THE LIMITS OF REMOVAL SHALL BE EXTENDED TO THE EXISTING JOINT. SUCH SAW CUTS WILL NOT BE PAID FOR DIRECTLY AND THIS COST SHALL BE CONSIDERED AS SUBSIDIARY TO THE REMOVAL OF THE SURFACE OR PAVEMENT.
8. PAVEMENT REMOVAL AND/OR REPLACEMENT WILL BE MEASURED AND PAID FOR ON THE LINEAL FOOT BASIS AS MEASURED ALONG THE CENTERLINE OF THE WATER LINE REGARDLESS OF WIDTH, PAVEMENT TYPE AND/OR PAVEMENT THICKNESS. MINIMUM LIMITS OF SUCH PAVEMENT REMOVAL AND/OR REPLACEMENT SHALL BE ONE FOOT MINUS THE LIMITS OF THE EXCAVATION MADE FOR THE WATER LINE OR THE STRUCTURE, EXCEPT WHEN SUCH SAW CUTS ARE WITHIN THREE (3) FEET OF AN EXISTING JOINT THE LIMITS OF REMOVAL SHALL BE EXTENDED TO THE EXISTING JOINT. REMOVAL AND REPLACEMENT OF EXISTING PAVEMENT SHALL CONFORM TO THE APPLICABLE SECTIONS OF THE CITY OF WICHITA STANDARD SPECIFICATIONS.
9. INTERURBAN TRAFFIC GENERATED OUTSIDE THE PROJECT AREA SHALL NOT BE CARRIED THROUGH CONSTRUCTION. LOCAL RESIDENTIAL TRAFFIC GENERATED WITHIN THE PROJECT AREA SHALL BE CARRIED THROUGH CONSTRUCTION AS FURTHER PROMULGATED BY PROJECT SPECIAL PROVISIONS.
10. UNDERGROUND UTILITY SERVICE LINES AND OVERHEAD UTILITY POLE LINES ARE TO BE ADJUSTED AS NECESSARY BY OTHERS PRIOR TO CONSTRUCTION UNLESS THE PLANS SPECIFICALLY CALL FOR THEIR ADJUSTMENT BY THE CONTRACTOR OR UNLESS THE PLANS SPECIFICALLY IDENTIFY A UTILITY TO BE ADJUSTED BY ITS OWNER DURING CONSTRUCTION. EXISTING UTILITIES AND THEIR LOCATION, AS SHOWN ON THE PLANS, REPRESENT THE BEST INFORMATION OBTAINABLE FOR DESIGN. LOCATION INFORMATION HAS BEEN OBTAINED FROM THE VARIOUS UTILITY COMPANIES AND IS EITHER FROM COMPANY LOGS, DRAWINGS OR COMPANY PROVIDED FIELD LOCATIONS. THE CONTRACTOR WILL BE REQUIRED TO MARK ANY AND ALL EXISTING UTILITIES WITHIN THE RIGHT-OF-WAY WHICH DO NOT CONFLICT WITH PROPOSED CONSTRUCTION.
11. RUBBLE FROM THE REMOVAL OF MISCELLANEOUS STRUCTURES AND EXCESS EXCAVATION WHICH IS TO BE WASTED SHALL BE DISPOSED OF ON SITES TO BE PROVIDED BY THE CONTRACTOR. THESE SITES SHALL BE APPROVED BY THE ENGINEER AS TO SUITABILITY, APPEARANCE AND SITE LOCATION. LOCATIONS THAT IN THE OPINION OF THE ENGINEER WILL LEAVE AN UNGRACEFUL APPEARANCE WILL NOT BE APPROVED.
12. ALL DISPOSAL SITES MUST BE APPROVED BY THE KANSAS DEPARTMENT OF HEALTH AND ENVIRONMENT. MATERIAL EITHER STOCKPILED OR DISPOSED OF IN A FLOODPLAIN WOULD REQUIRE A KANSAS STATE BOARD OF AGRICULTURE PERMIT. ANY MATERIAL DUMPED IN WATERS OF THE UNITED STATES OR TERRITORIES IS SUBJECT TO U.S. CORPS OF ENGINEERS PERMITTING REGULATIONS. ANY MATERIAL BURIED OR STOCKPILED BEYOND APPROVED CONSTRUCTION LIMITS WOULD REQUIRE ADDITIONAL ARCHEOLOGICAL INVESTIGATIONS UNLESS BURIED IN A PREVIOUSLY APPROVED BORROW LOCATION.
13. PROPERTIES WITHIN THE PROJECT LIMITS MAY HAVE UNDERGROUND SPRINKLER SYSTEMS IN THE PUBLIC RIGHT-OF-WAY WHICH CONFLICT WITH NEW CONSTRUCTION. CONTRACTOR WILL BE REQUIRED TO REMOVE SUCH IMPROVEMENTS SHOULD THEY NOT BE REMOVED BY THEIR OWNER AT THE TIME OF CONSTRUCTION OF THE PROJECT. THE CONTRACTOR WILL BE REQUIRED TO SALVAGE ALL SPRINKLER HEADS AND/OR VALVES AND LAY SUCH MATERIAL TO THEIR OWNER. PORTIONS OF UNDERGROUND SPRINKLER SYSTEMS NOT IN CONFLICT WITH NEW CONSTRUCTION SHALL BE PROTECTED FROM DAMAGE AND SHALL REMAIN IN PLACE. ALL WORK IN CONNECTION WITH UNDERGROUND SPRINKLER SYSTEMS SHALL BE CONSIDERED AS SUBSIDIARY TO THE CONTRACT PAY ITEMS OF WORK.
14. PRIOR TO LAYING THE NEW SEWER LINES THE CONTRACTOR SHALL EXPOSE AND VERIFY THE ELEVATION, GRADE AND ALIGNMENT OF THE EXISTING STORM WATER SEWER AND NOTIFY THE ENGINEER OF ANY DISCREPANCIES FROM THE PLAN.

STORM SEWER SITE PLAN FOR BARNUM ADDITION WICHITA, KANSAS		
COW PRIV. PROJ. NO. 841 PPS(6075)		
CERTIFIED ENGINEERING DESIGN		
438 NORTH OREGON WICHITA, KANSAS 67214 (316) 262-8800		
DESIGNED: HIF	SCALE: 1"=40'	SHEET:
DRAWN: JM	DATE: 8-98	TOTAL:
CHECKED: HIF	CED FILE: BRNSWSP.dwg	TOTAL:



SWS NO. 1, Sta. 10+00.00=
SWS MH 1
N= 5045.8250
E= 2003.3745
Const. Std. Shallow MH Type 'B'
over Exst. 24" RCP SWS.
D.O.= 4'-J
Top Elev.= 88.5
Fl. Exst. 24" RCP= 84.08

SWS NO. 1, Sta. 12+93.27=
SWS Drop Inlet 1
N= 5339.1137
E= 2003.4126
Const. Std. 2' x 4' Drop Inlet
Inlet Top Elev= 88.0

Remove and reconstruct Concrete
Curb or Gutter as required.

CAUTION!!!
12" Water Line
To be relocated
(by others)

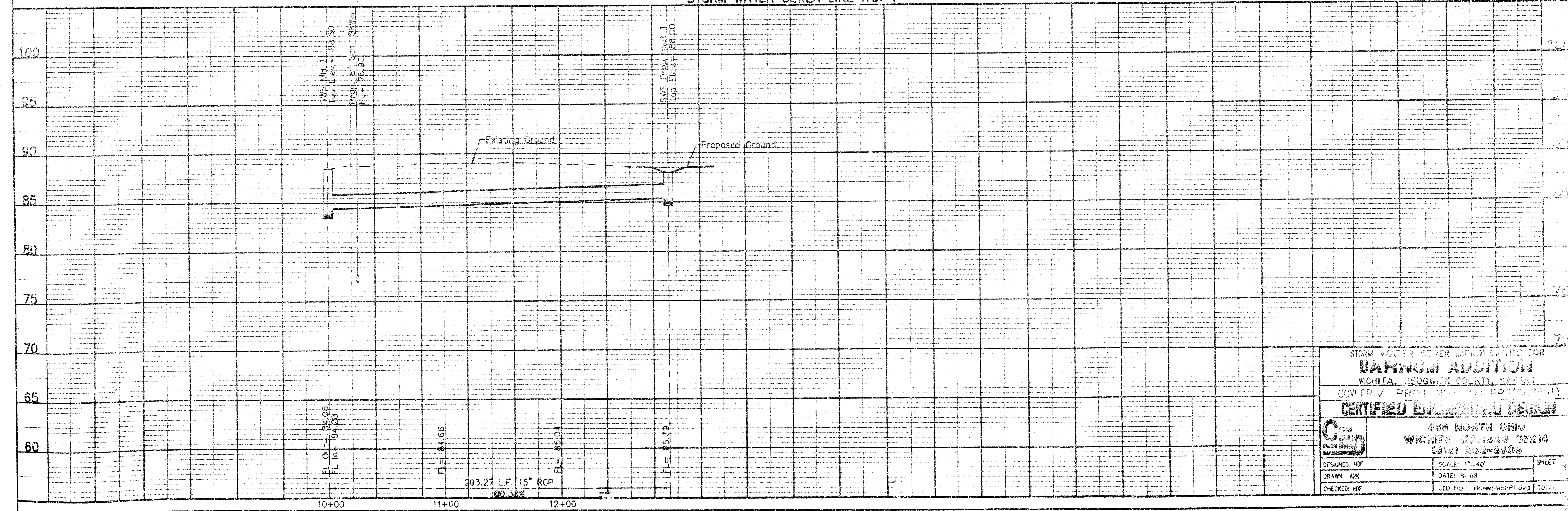
CAUTION!!!
Prop. 8" Sgn. Sewer
(by others)

* OWN ELEVATION OF EXISTING 24" SWS RCP IS BASED ON
THE BEST INFORMATION AVAILABLE FOR DESIGN. THE
CONTRACTOR SHALL FIELD VERIFY THE DEPTH AND NOTIFY
THE PROJECT ENGINEER OF ANY DISCREPANCIES.

UTILITIES SHOWN REPRESENT THE BEST
INFORMATION AVAILABLE FOR DESIGN. ADDITIONAL
UTILITIES MAY BE PRESENT ON THIS PROJECT.
THE CONTRACTOR SHALL BE RESPONSIBLE FOR
DETERMINING THE EXACT LOCATION, DEPTH
AND SIZE OF ALL UNDERGROUND UTILITIES
PRIOR TO CONSTRUCTION. THE CONTRACTOR
SHALL BE LIABLE FOR ANY DAMAGE CAUSED
BY THE FAILURE TO DO SO.

BENCHMARK:
TOP OF GRADER BLADE 30' SOUTH AND 1' WEST OF SE CORNER
OF THE SW 1/4, SEC. 9, T28S, R1E. ELEV=89.52 CITY DATUM

STORM WATER SEWER LINE NO. 1

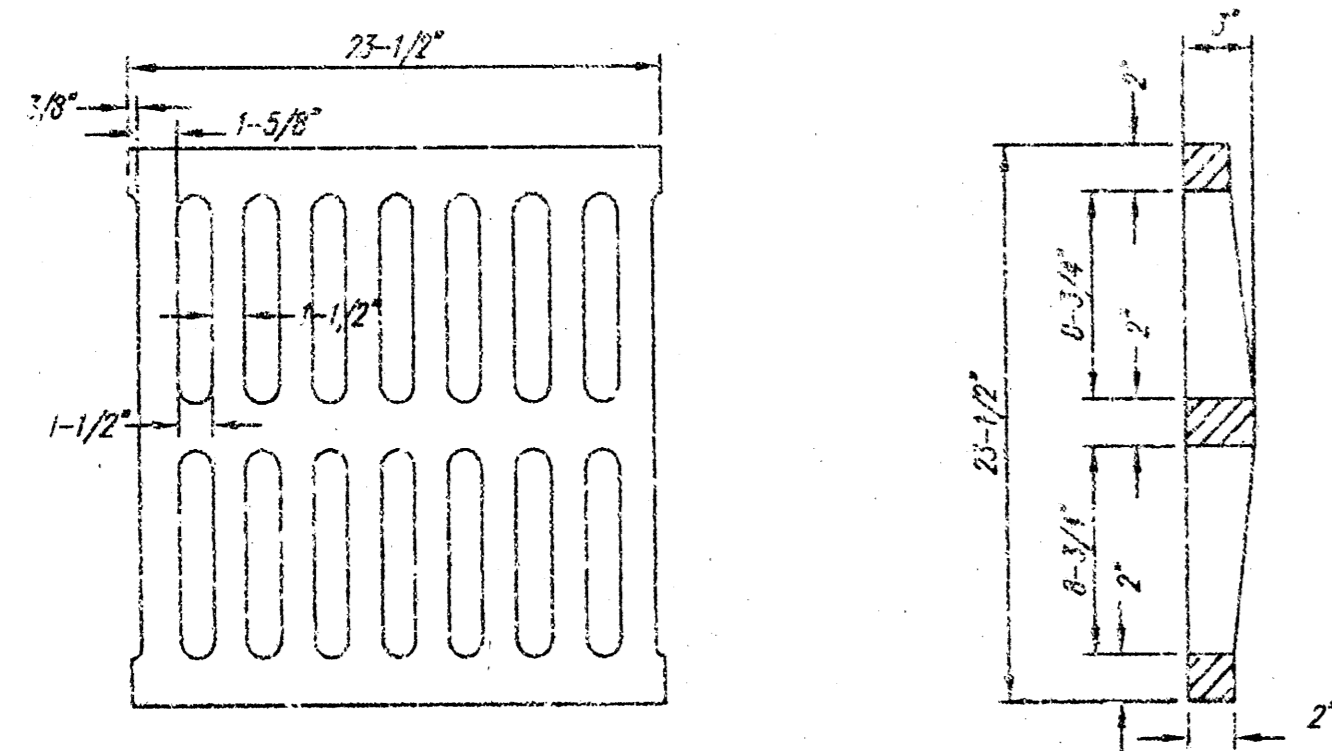
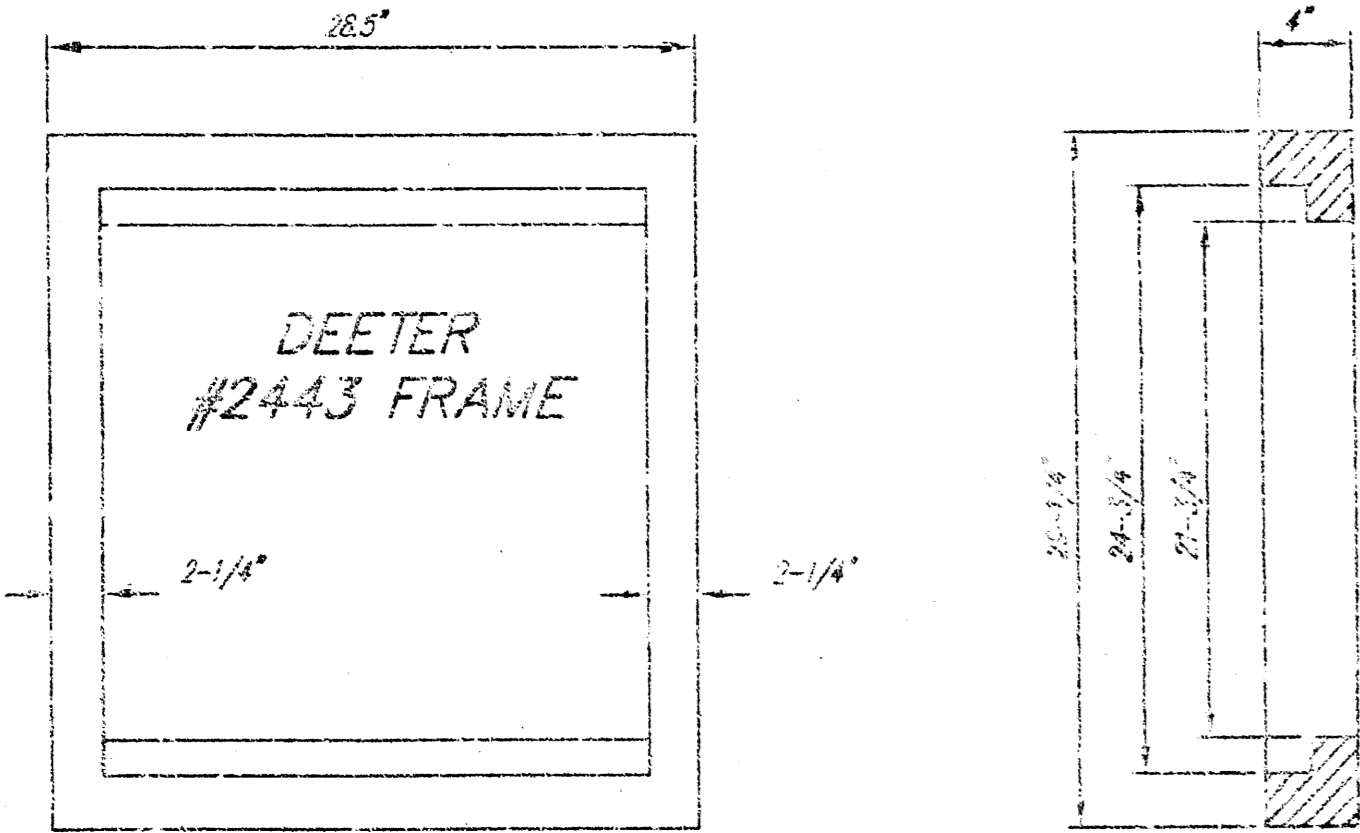


STORM WATER SEWER IMPROVEMENTS FOR
BARNUM ADDITION
WICHITA, SEDGWICK COUNTY, KANSAS
COW PRJ. PROJ. NO. 2011-01 (17841)

CERTIFIED ENGINEER'S DESIGN

G&S
486 NORTH OHIO
WICHITA, KANSAS 67214
(316) 262-8008

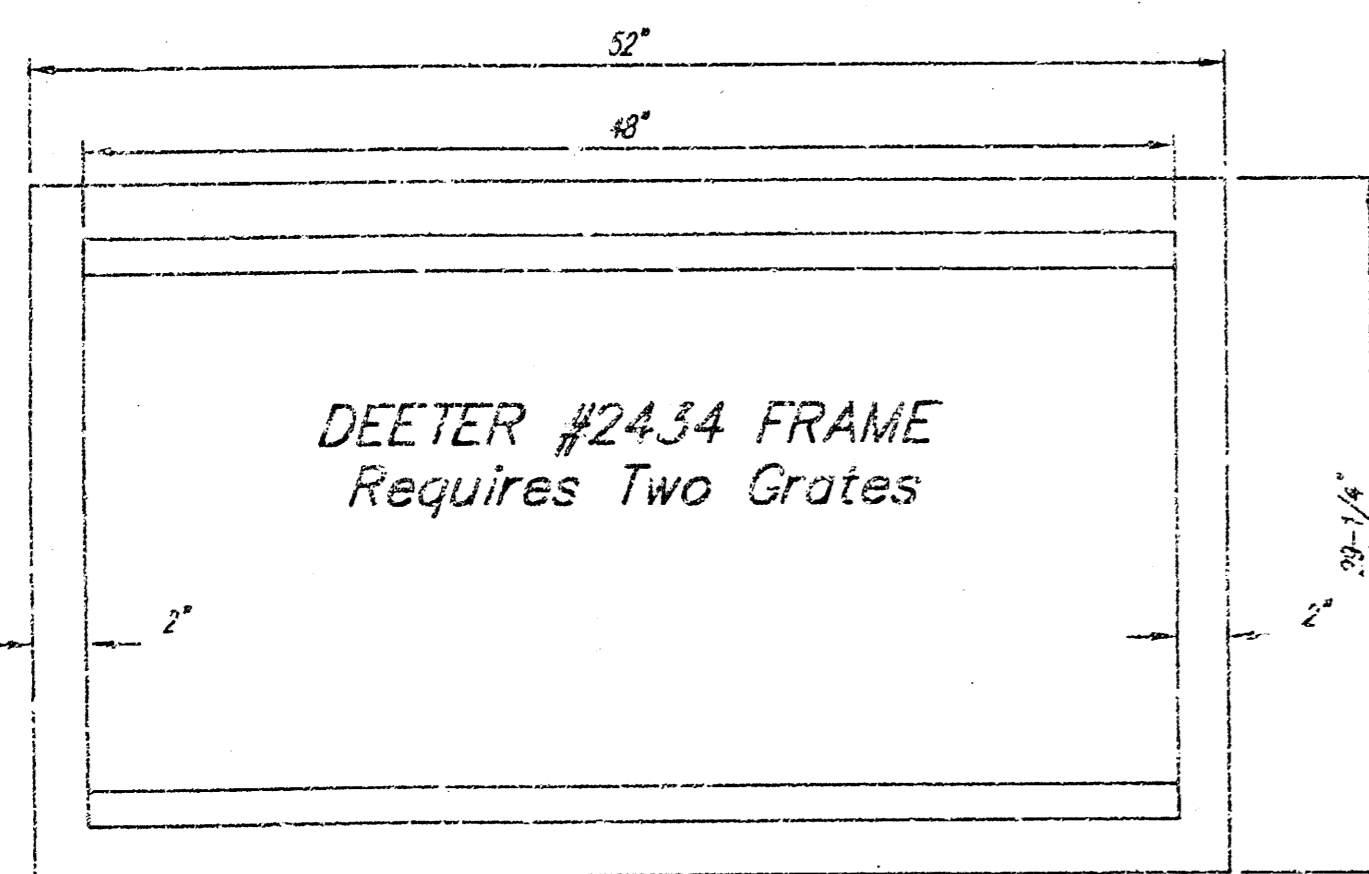
DESIGNED: HOF	SCALE: 1"=40'	SHEET
DRAWN: ARK	DATE: 9-08	TOTAL
CHECKED: HOF	CEO FILE: ARK\SWSP1.dwg	



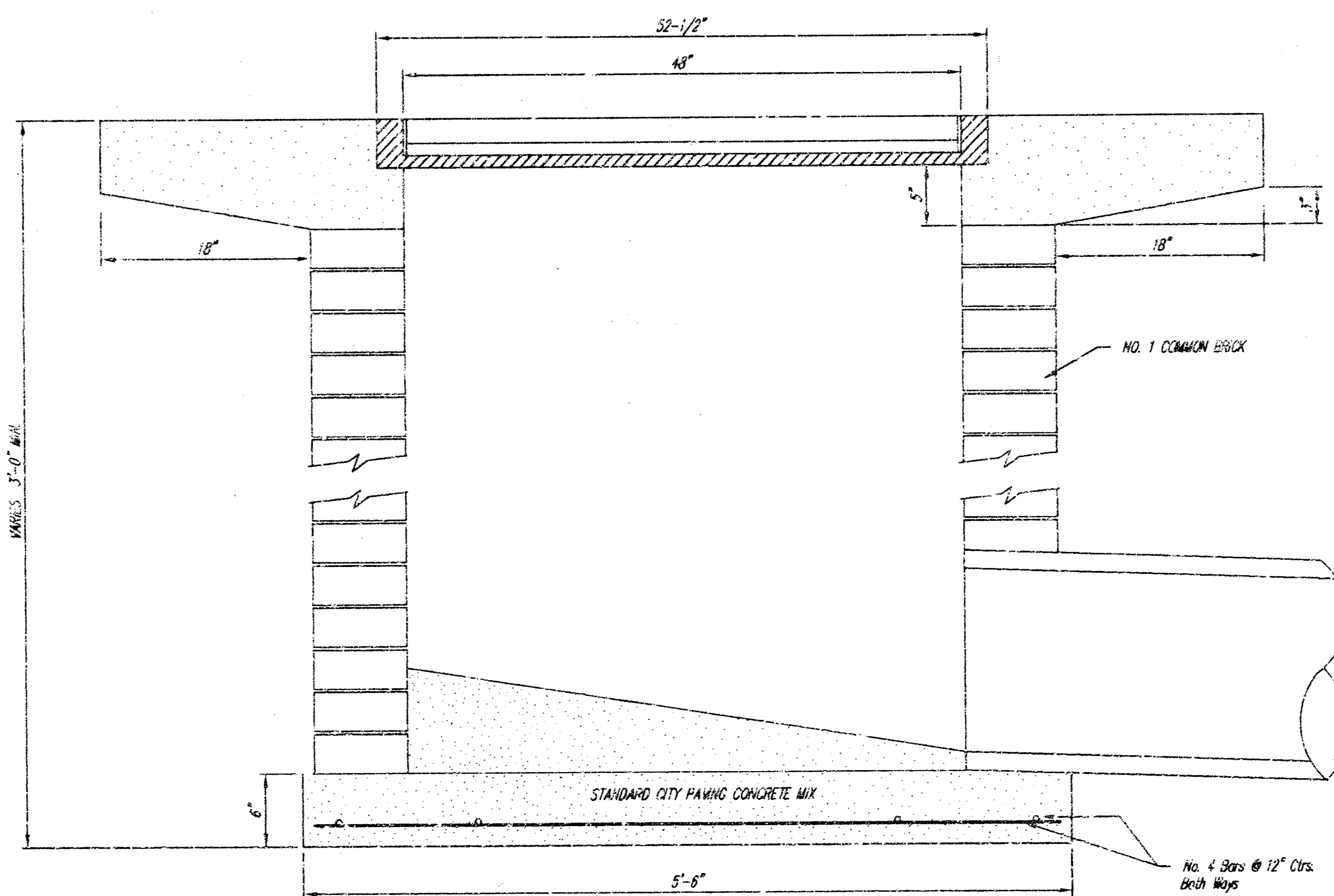
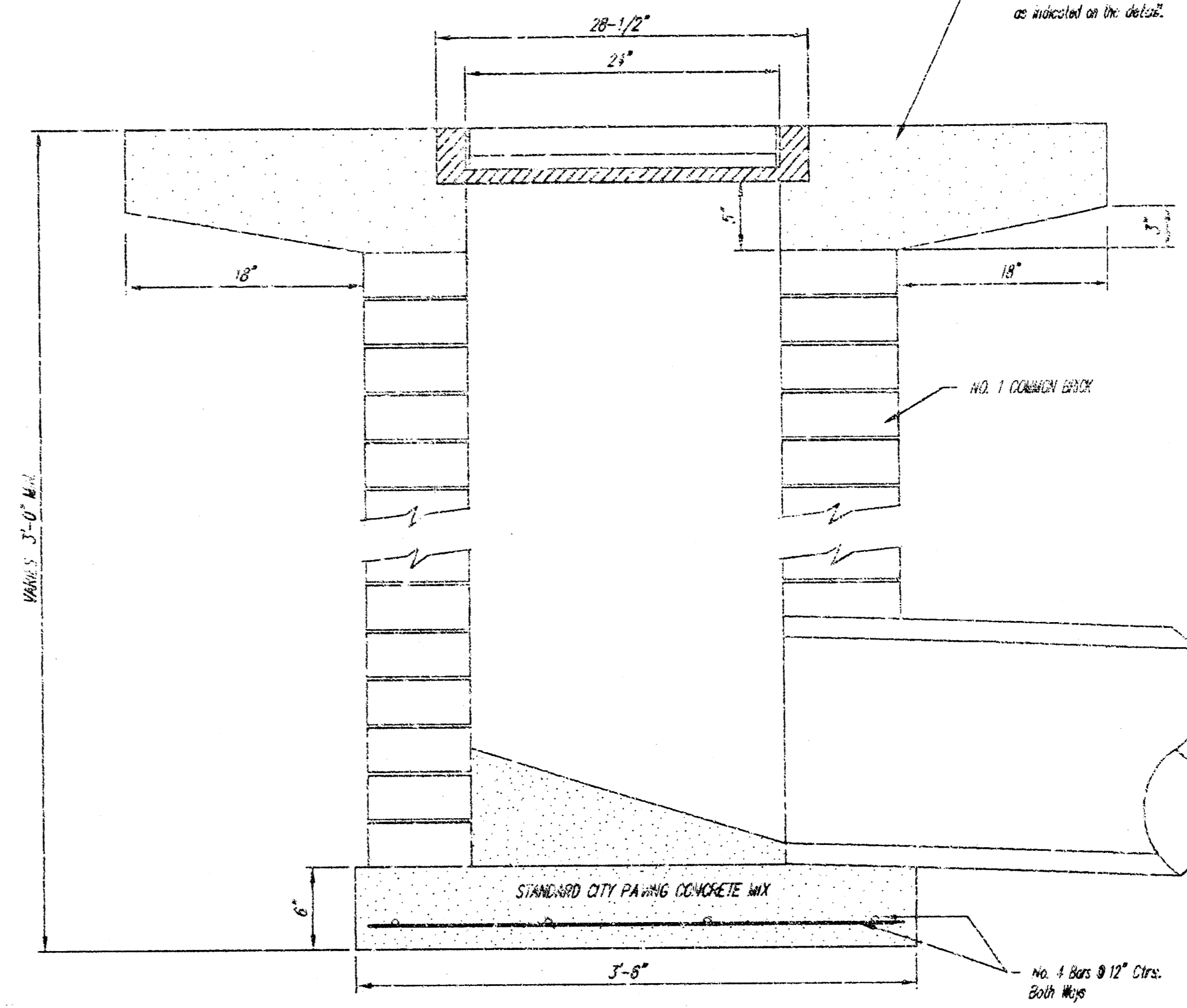
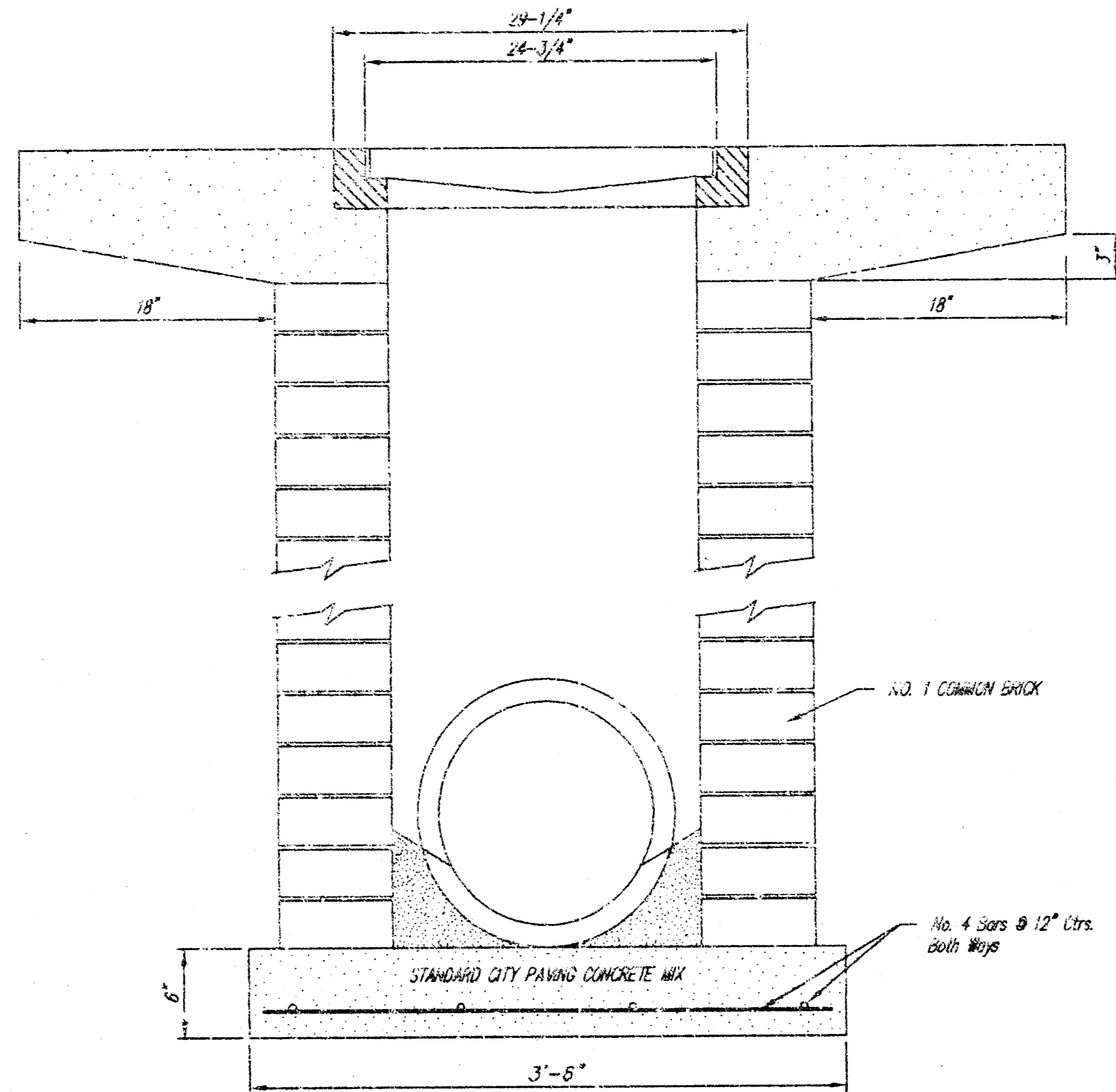
DEETER #2433 GRATE

24" x 24" Frame and Grate Detail

NOTE: Grates shall be imprinted on the top surface with "CITY OF WICHITA" using letters of least 1" in height. Other marking methods may be approved by the engineer.

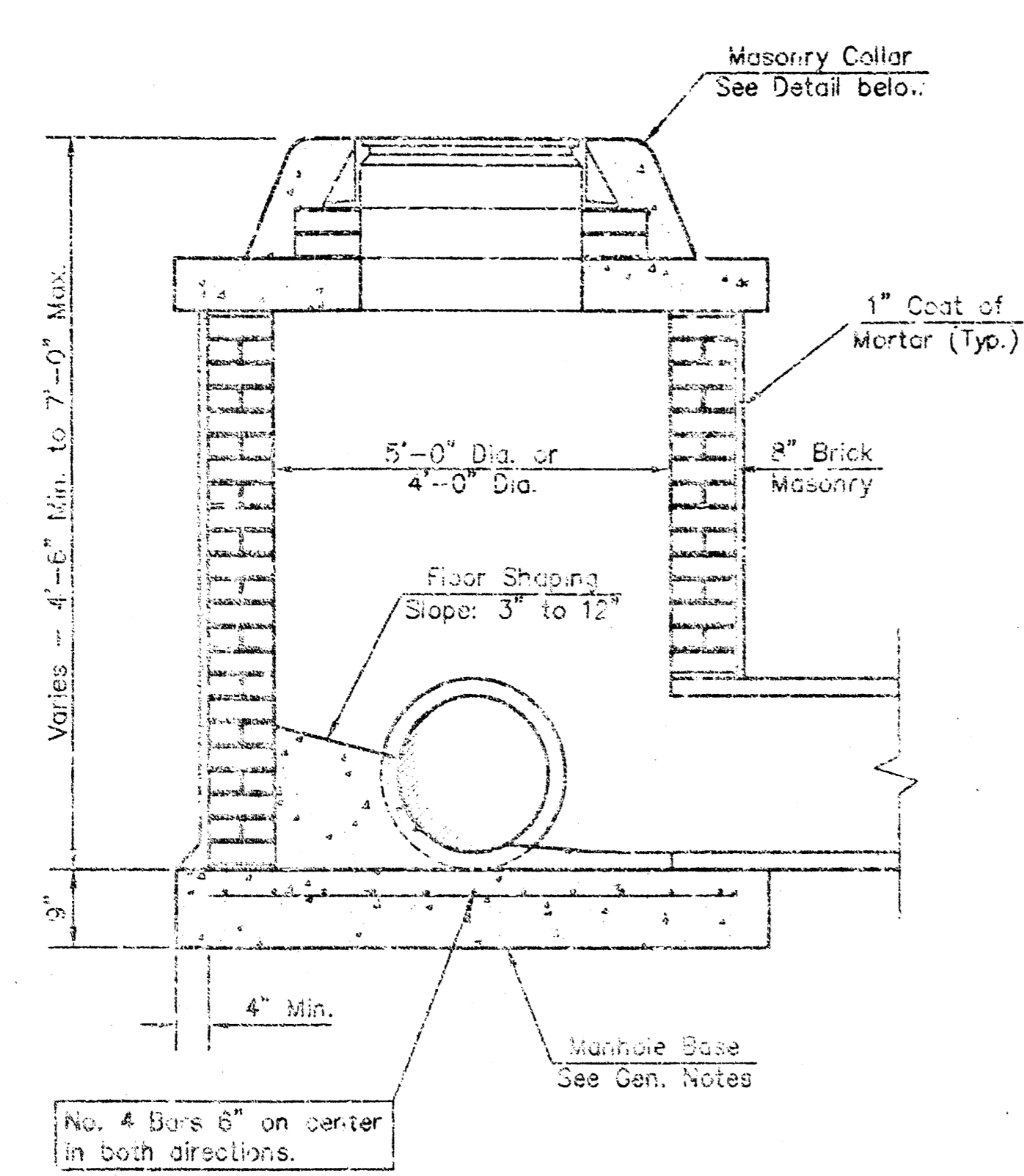


Double 24" x 24" Frame Detail

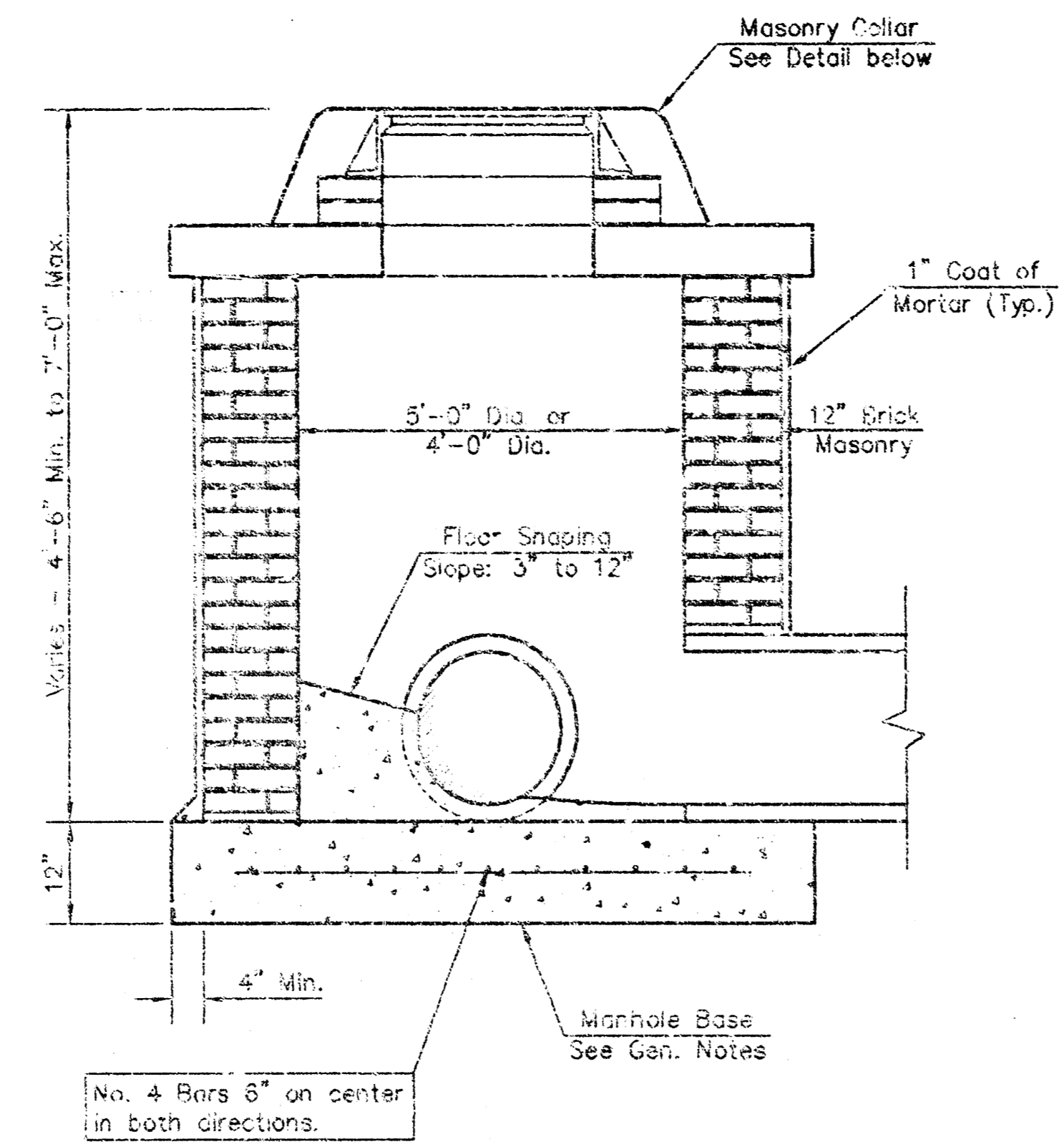


Note: Concrete work shall be cast around the drop inlet and finished around the shaft when set in accordance with the specifications. Where the shaft is subject to pavement, the pavement thickness shall be increased to the full 18 inches as indicated in the detail.

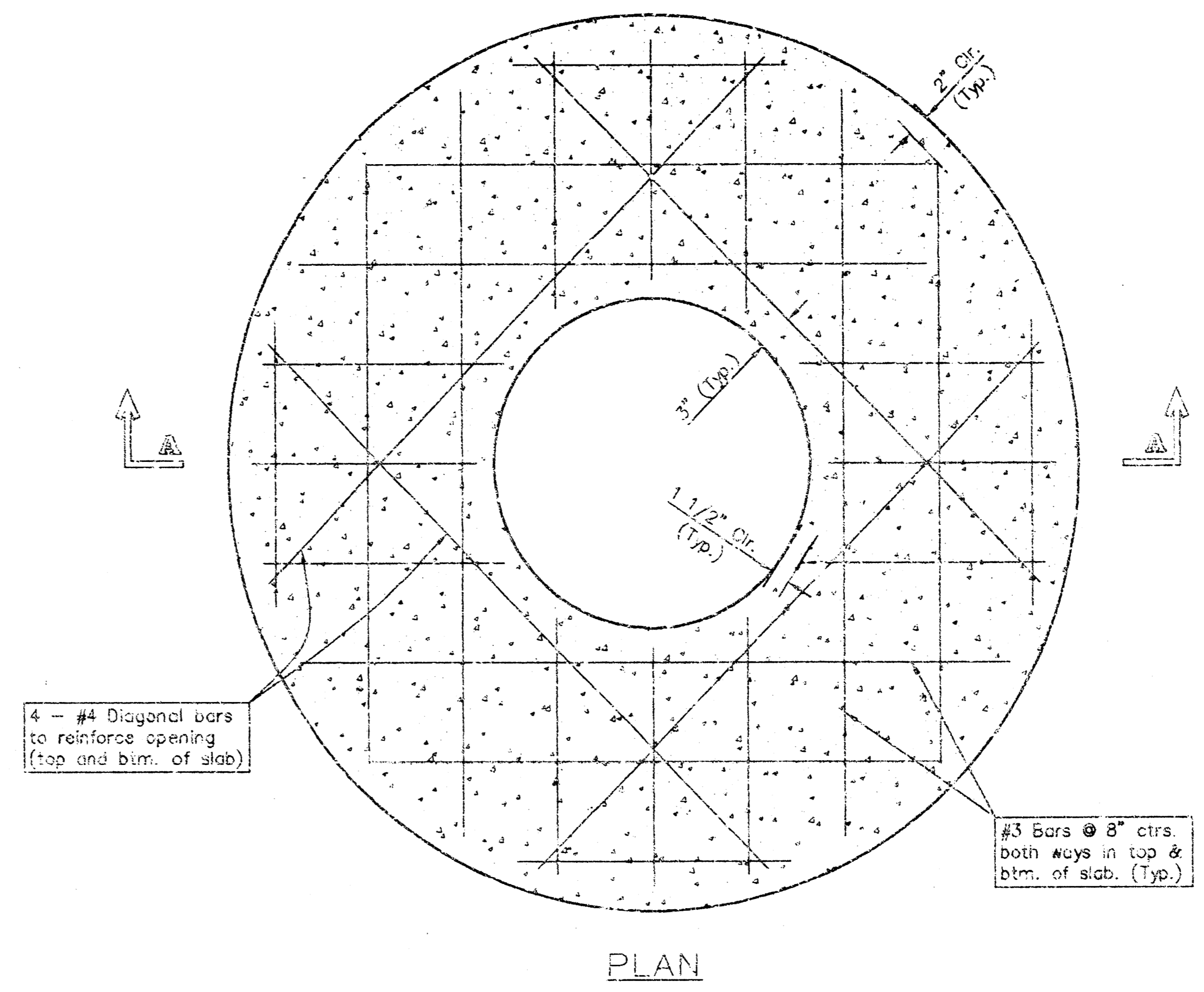
STORM WATER SEWER IMPROVEMENTS	
DROP INLET DETAIL	
WICHITA, KANSAS	
CITY OF WICHITA	
CERTIFIED ENGINEER	
480 NORTH OHIO	
WICHITA, KANSAS 672	
(913) 262-8000	
DESIGNED: HOF	SCALE: NTS
DRAWN: HOF	DATE: 6-93
CHECKED: HOF	C.R. FILE: DROPINLT.dwg



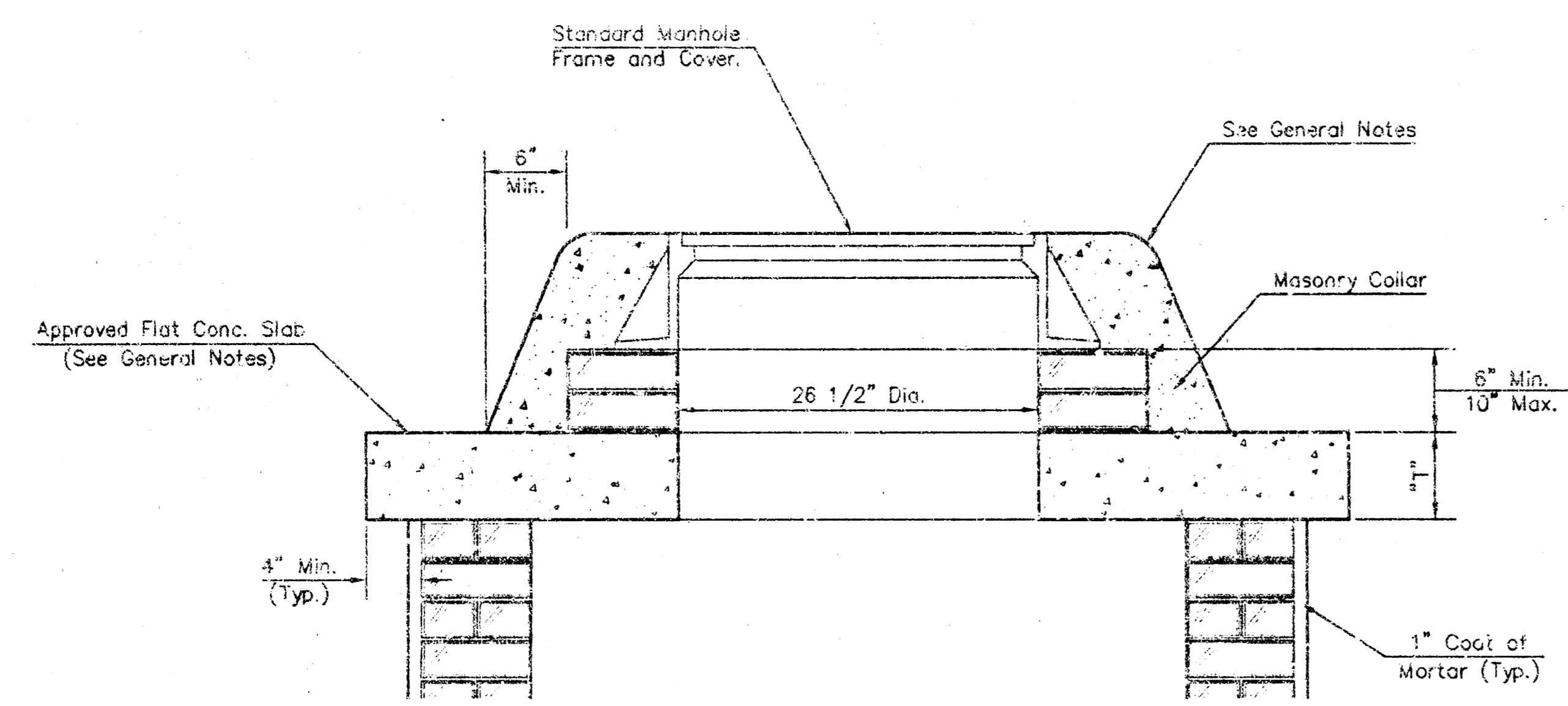
SHALLOW TYPE "A" MANHOLE



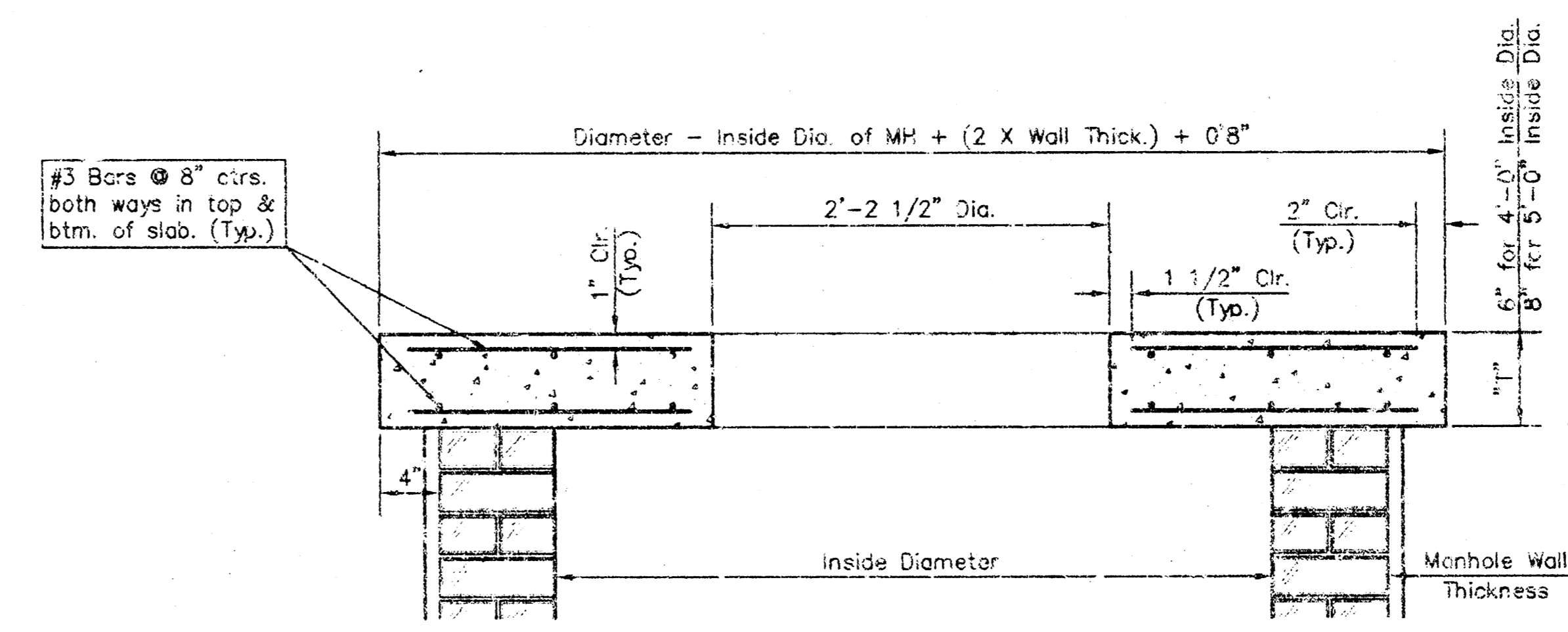
SHALLOW TYPE "B" MANHOLE



PLAN

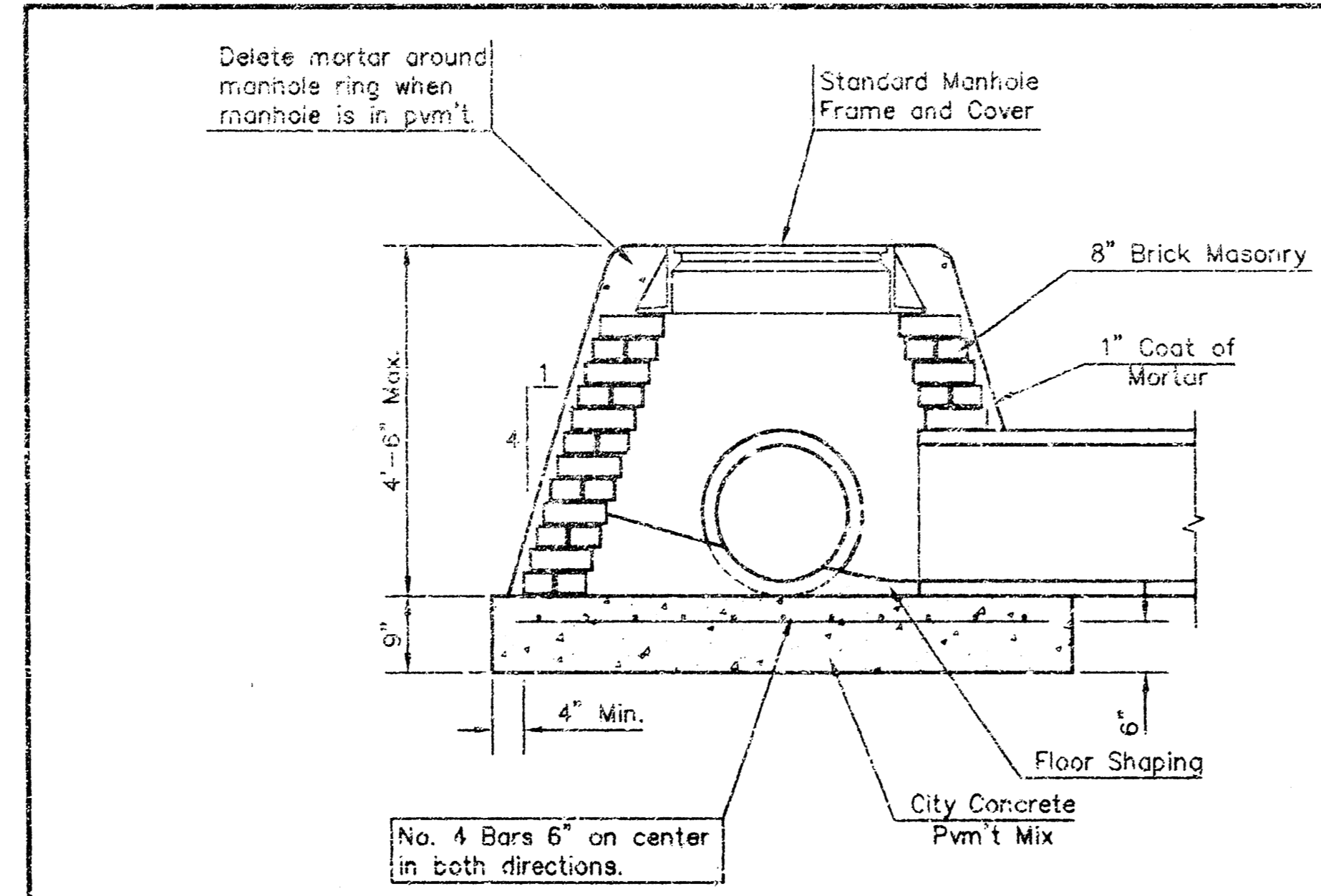


MASONRY COLLAR DETAIL

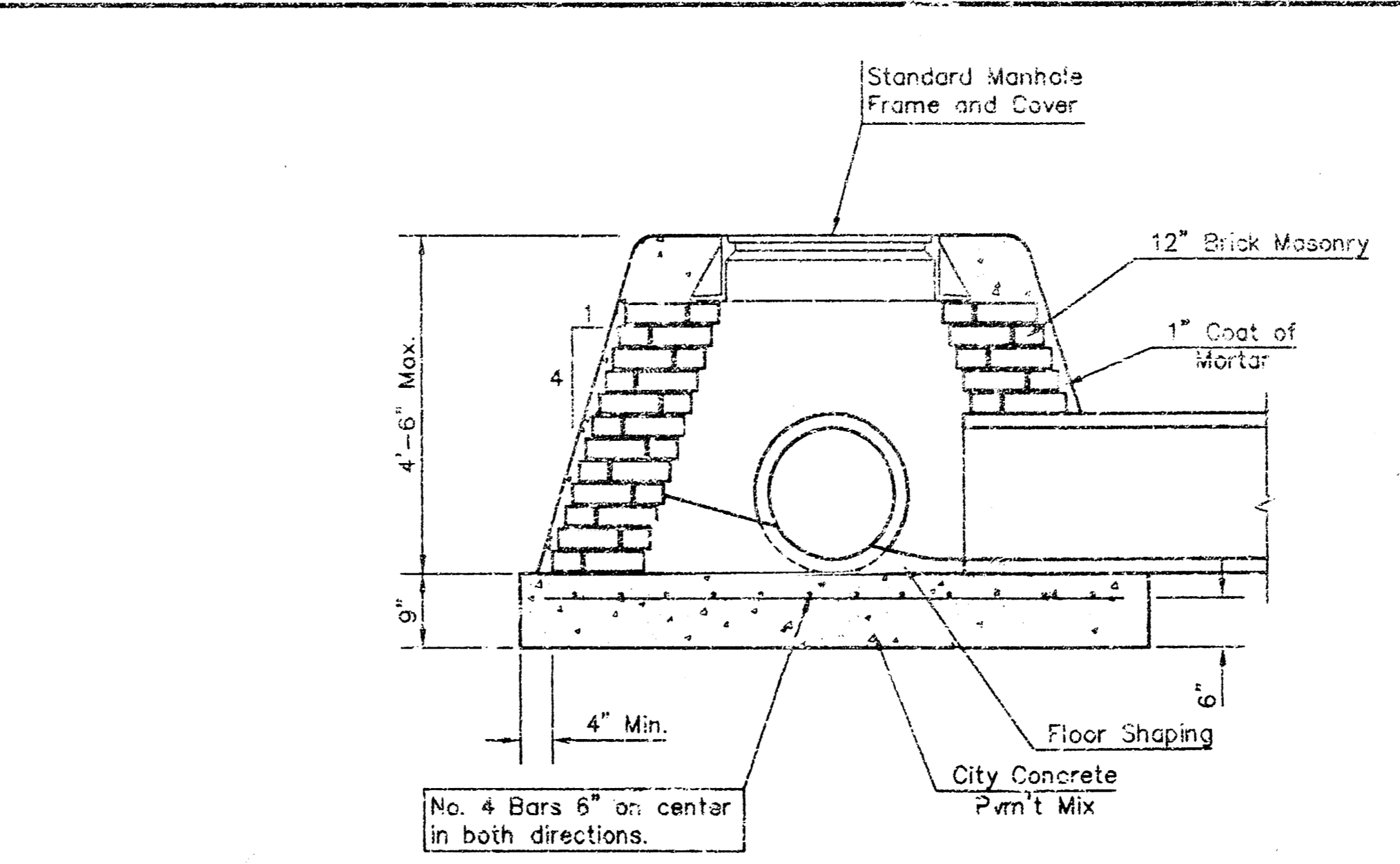


SECTION A-A

FLAT CONCRETE SLAB DETAILS



SPECIAL SHALLOW TYPE "A" MANHOLE



SPECIAL SHALLOW TYPE "B" MANHOLE

GENERAL NOTES

- Mortar used in masonry construction shall contain 5 sacks of cement per cubic yard. Concrete used in manhole bases shall conform to the requirements of concrete for concrete pavement construction as specified in the city standard paving specifications using city concrete cement mix without air entraining admixtures. Mortar shall be placed around the manhole ring as shown on the drawings when manholes are constructed in unexcavated areas. Type "A" shallow manholes can be used on sewers when the manhole is not located within public street pavement. Manholes constructed where pipe sizes are smaller than 24" shall have an inside diameter of 4". Manholes constructed where pipe sizes are 24" or larger shall have an inside diameter of 5". Completed manholes shall be without leaks and water tight.
- Reinforcing steel shall be installed in the manhole base and shall consist of no. 4 bars placed on 6" centers in both directions. The manhole base reinforcement shall be placed 6" above the bottom of the manhole base. All costs for furnishing and installing reinforcing steel shall be included in the unit price bid for the manhole.
- The floors of all manholes shall be shaped with flow channels such that the manholes will be self-cleaning and free of areas where solids could be deposited as sewage flows through the manhole from inlet pipes to the outlet pipe. Flow channels shall be formed to match the bottom halves of the inflowing pipes and the outflowing pipe as shown by the drawings. Manhole floors shall have slopes of 3 inches per foot in the areas outside of the flow channels sloped toward the flow channels. Pipes laid through manholes shall have the top half removed to neat lines for the full inside diameter of the manhole. Manhole floors shall then be shaped around the bottom half of the pipe which forms the flow channel.
- Pipes installed within the excavation made for the manhole shall be cradled with concrete to the limits of the manhole excavation. When clay pipe is used, the cradle shall extend to the first joint outside the manhole. The cradle shall be terminated at the clay pipe joint in a manner which will maintain the flexibility of the joint. Cost of cradle within manhole excavation or to clay pipe joints adjacent to manhole shall be included in the unit price bid for the manhole.
- Manhole cover castings and manhole frame castings shall conform to the requirements as indicated in the standard specifications and as shown in the standard detail drawings.
- The crowns of inflowing pipes shall never be set lower than the crown of the outflowing pipe.
- Standard shallow manholes type "A" and "B" shall be paid for at the unit price bid per each for the type and diameter indicated. Standard special shallow manholes type "A" and "B" shall be paid for at the unit price bid per each for the type indicated. All standard inflow manhole diameters will be 4' unless indicated otherwise.
- All brick used in manhole construction shall meet Grade SW of ASTM C652 or C62-87.

STANDARD/SPECIAL SHALLOW MANHOLES TYPE 'A' & 'B'