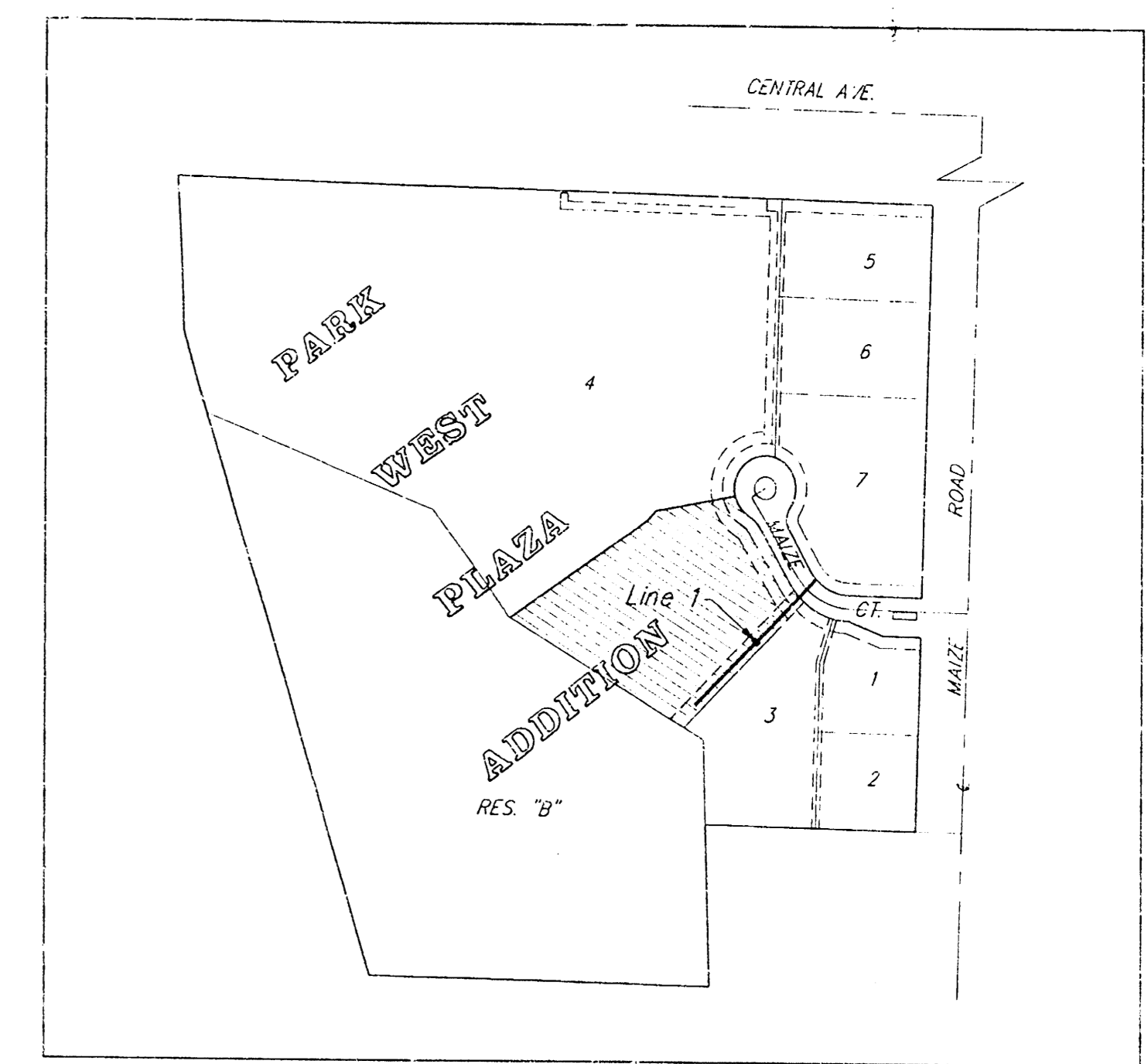
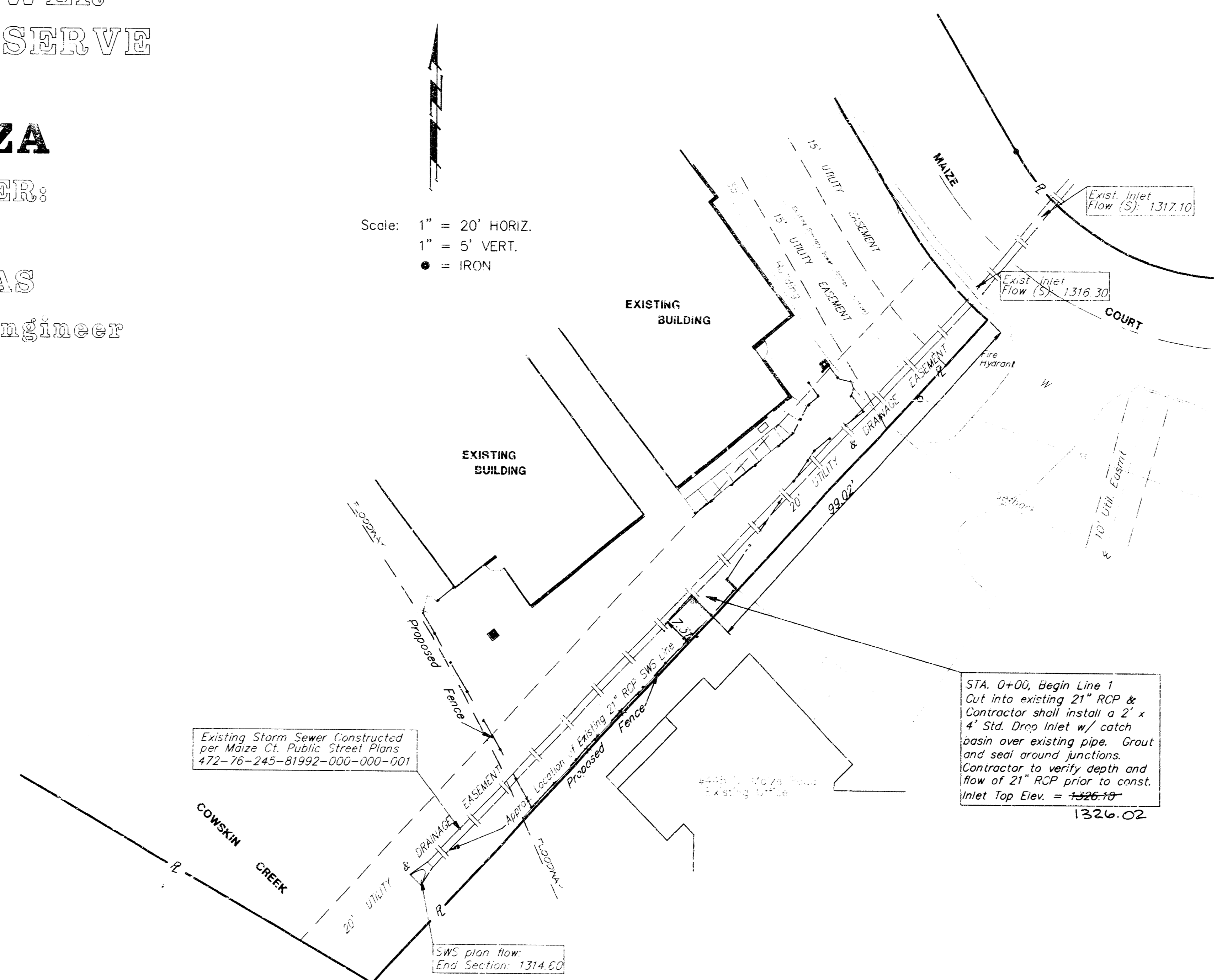


**STORMWATER SEWER
IMPROVEMENTS TO SERVE
PART OF LOT 4,
PARK WEST PLAZA**
PRIVATE PROJECT NUMBER:
850 PPS (607861)
CITY OF WICHITA, KANSAS
Michael E. Lindebak, P.E. City Engineer

GENERAL NOTES:

- Contractor will be required to provide notice to utility companies a minimum of twenty-four (24) hours prior to any excavation, as follows:
 Kansas One-Call 687-2470
 The Contractor must notify the following in case of an emergency:
 MultiMedia: 262-0661
 Cablevision 263-2061
 Security Systems 383-8650
 K.P.L. Gas Service Company 383-8600
 Kansas Gas & Electric Company 942-8350
 Energy One Company 800-344-7233
 Southwestern Bell Telephone Company 268-4308
 City of Wichita Water Department (Emergency) 268-4071
 City of Wichita Sewer Maintenance (Shop i) 268-4071
- Underground utility service lines and overhead utility pole lines are to be adjusted as necessary by others prior to construction unless the plans specifically call for their adjustment by the Contractor or unless the plans specifically identify a utility to be adjusted by its owner during construction. Existing utilities and their location, as shown on the plans, represent the best information obtainable for design. The Contractor will be required to work around existing utilities within the right-of-way which do not conflict with proposed construction.
- The Contractor shall notify pipeline companies at least 24 hours in advance of any work being performed across and/or adjacent to pipelines.
- Trees and shrubs in public right-of-way which are in direct conflict with proposed new construction shall be removed by the Contractor with the Engineer's approval. Trees and shrubs which are not in direct conflict with proposed new construction shall be saved and protected from damage.
- Contractor shall not start work on any part of the project contained within easement until the project inspector is assigned to the project and is present on site. Any work done within easement but without inspection will be required to be uncovered for inspection.
- The buried utilities as shown on the plans are approximate locations only. It should be noted that other buried lines and cables may exist which are not shown on these plans. The Contractor shall exercise extreme caution during trenching operations to avoid damaging these lines. Any lines damaged shall be replaced or repaired immediately as directed by the Engineer at the Contractor's expense.
- The Contractor shall be responsible for maintaining surrounding elements without damage. Any damage to existing properties or buildings, contractor shall replace any damage to structures at contractors own expense.
- Rubble from the removal of miscellaneous structures and excess excavation which is to be wasted shall be disposed of on sites to be provided by the Contractor. These sites shall be approved by the engineer as to suitability, appearance and site location. Locations that, in the opinion of the Engineer, will leave an unsightly appearance will not be approved.
- Prior to bid preparation, it will be the Contractor's responsibility to field check the project area to determine the extent of Site Clearing and Restoration to be performed.
- Contractor responsible when ordering the catch basin, DO NOT have the catch basin box completely pre-fabricated (21" RCP flow line is estimated). Contractor to use brick to complete the catch basin top elevation for the drop inlet.
- Contractor responsible for any damage occurring to surrounding elements. Any damage done to existing buildings, sidewalks, etc., contractor shall replace surroundings as before construction began, at the expense of the contractor.



LOCATION MAP
No Scale

BENCHMARKS

- Cut top of curb at the back of cul-de-sac, Maize Court. Elev. = 136.74 CITY DATUM, 1324.14 MSL
- Cut on the top of curb at the south end of return at SE corner of Hardner and Maize Road. Elev. = 134.50 CITY DATUM, ELEV = 1321.90 MSL

BOOKED
D-390
M.C.G.
4-5-99

INDEX:

- Line 1 - Stormwater Sewer Improvements
- Standard Drop Inlet Detail
- Park West Plaza Plot

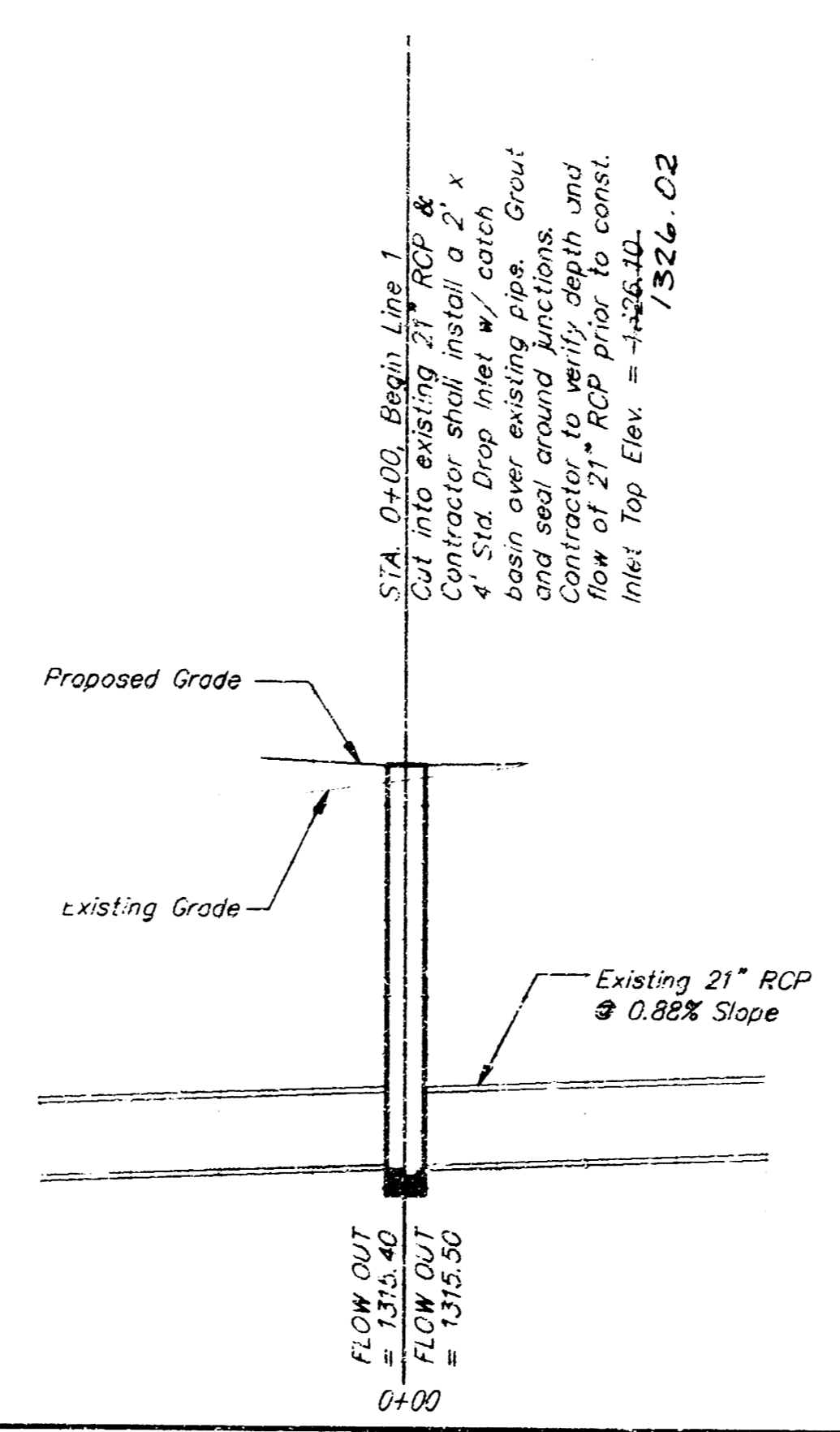
**APPROVED AS NOTED
BY CITY ENGINEER OF WICHITA**

Storm Sewers *10/4/01*

NOTE TO CONTRACTORS

Inspection and testing for this project is to be provided by a Licensed Consulting Engineering Firm under contract with the Owner/Developer. Said inspection to be in accordance with the City of Wichita standard construction engineering practices and certified by a Licensed Professional Engineer. No work shall be performed in dedicated easements or public right-of-way by the Contractor without such inspection nor shall any work be commenced without written authorization by the City Engineer. All Construction and Materials shall comply with the City of Wichita Specifications and Standards (on file and available in the City Engineer's Office).

PROJECT INSPECTED BY BAUGHMAN COMPANY, PA
ASBUILT 2/99 EMT



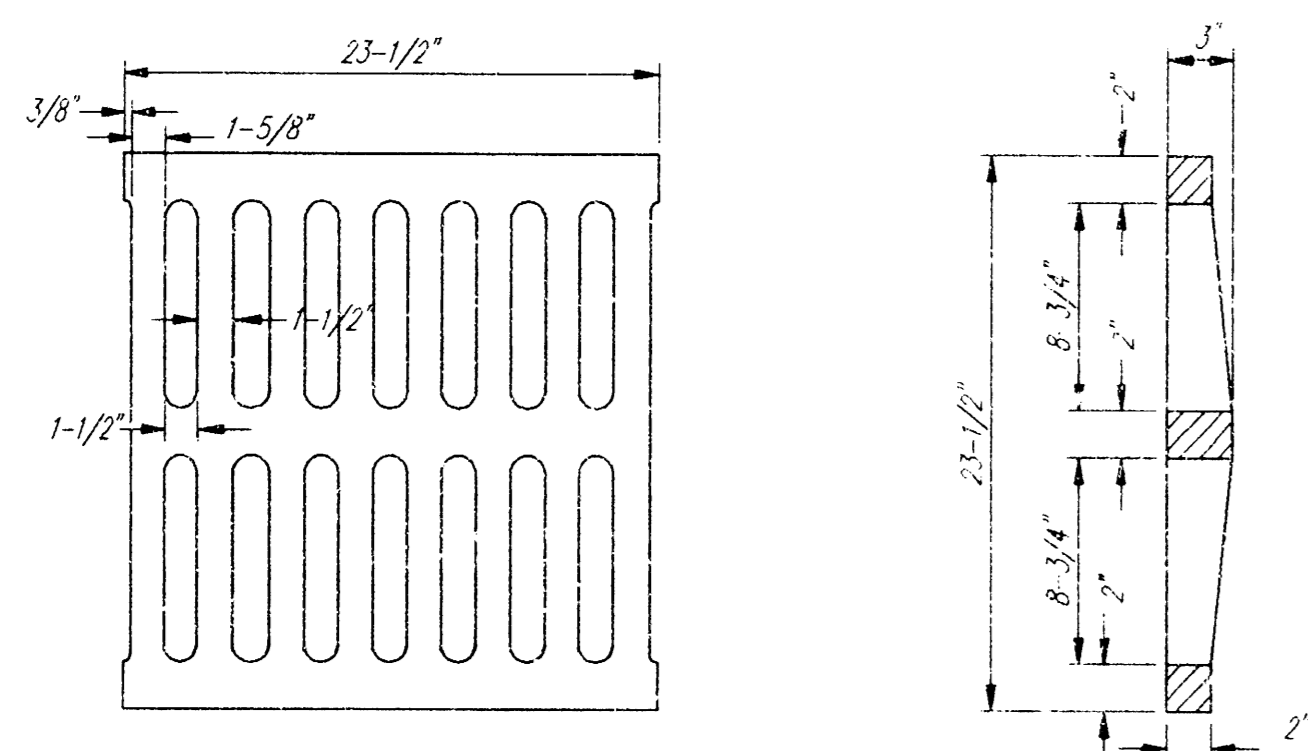
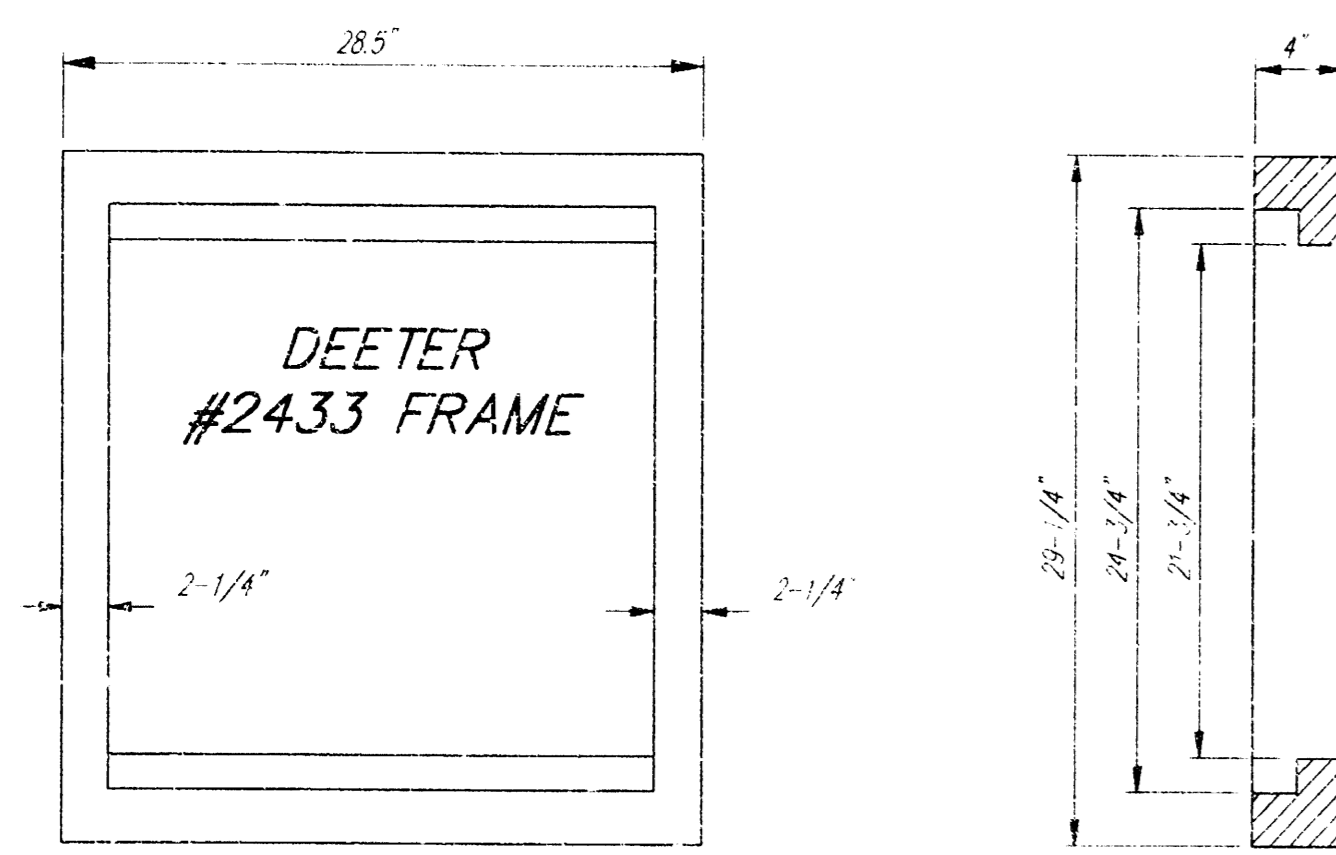
NOTE:
Contractor shall be responsible for all costs of any relocation or adjustments of any utility that is in direct conflict of the proposed Stormwater Sewer Improvements.

PART OF LOT 4, PARK WEST PLAZA
LINE 1
STORM WATER SEWER IMPROVEMENTS

BAUGHMAN COMPANY P. A.
ENGINEERING, SURVEYING, & PLANNING

PROJECT NUMBER: **850 PPS (607861)**

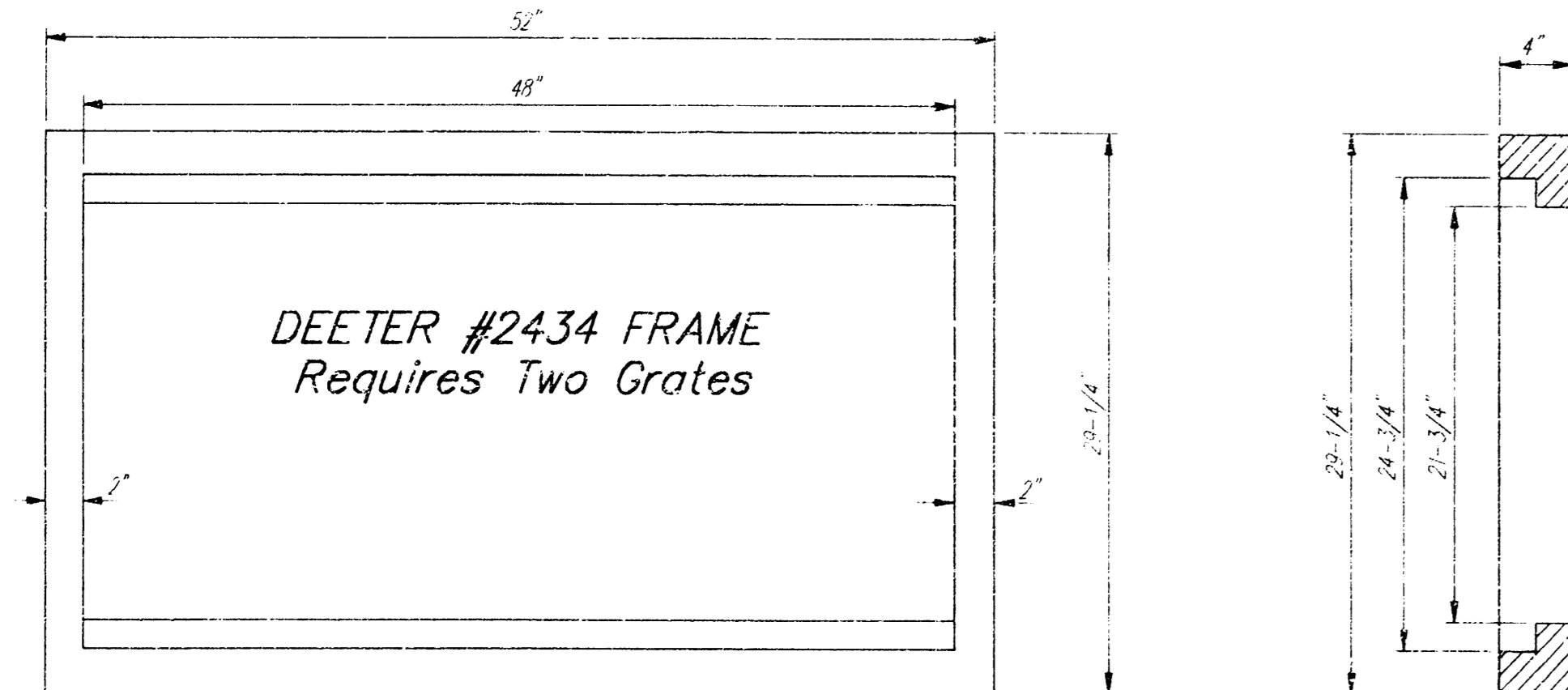
DESIGN	DRAWN	APPROVED	DATE	SCALE	SHEET
			11/27	AS SHOWN	1 OF 3



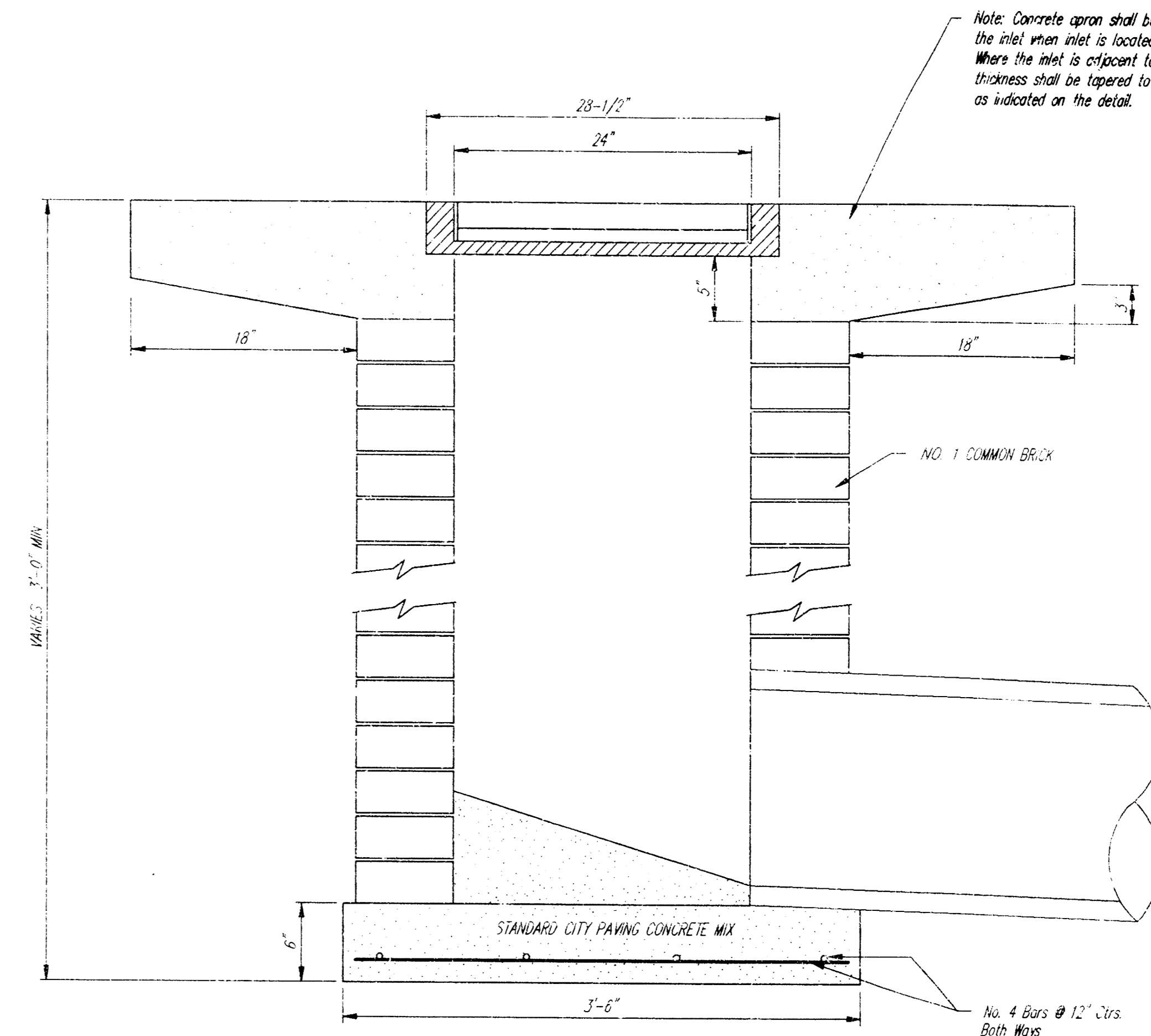
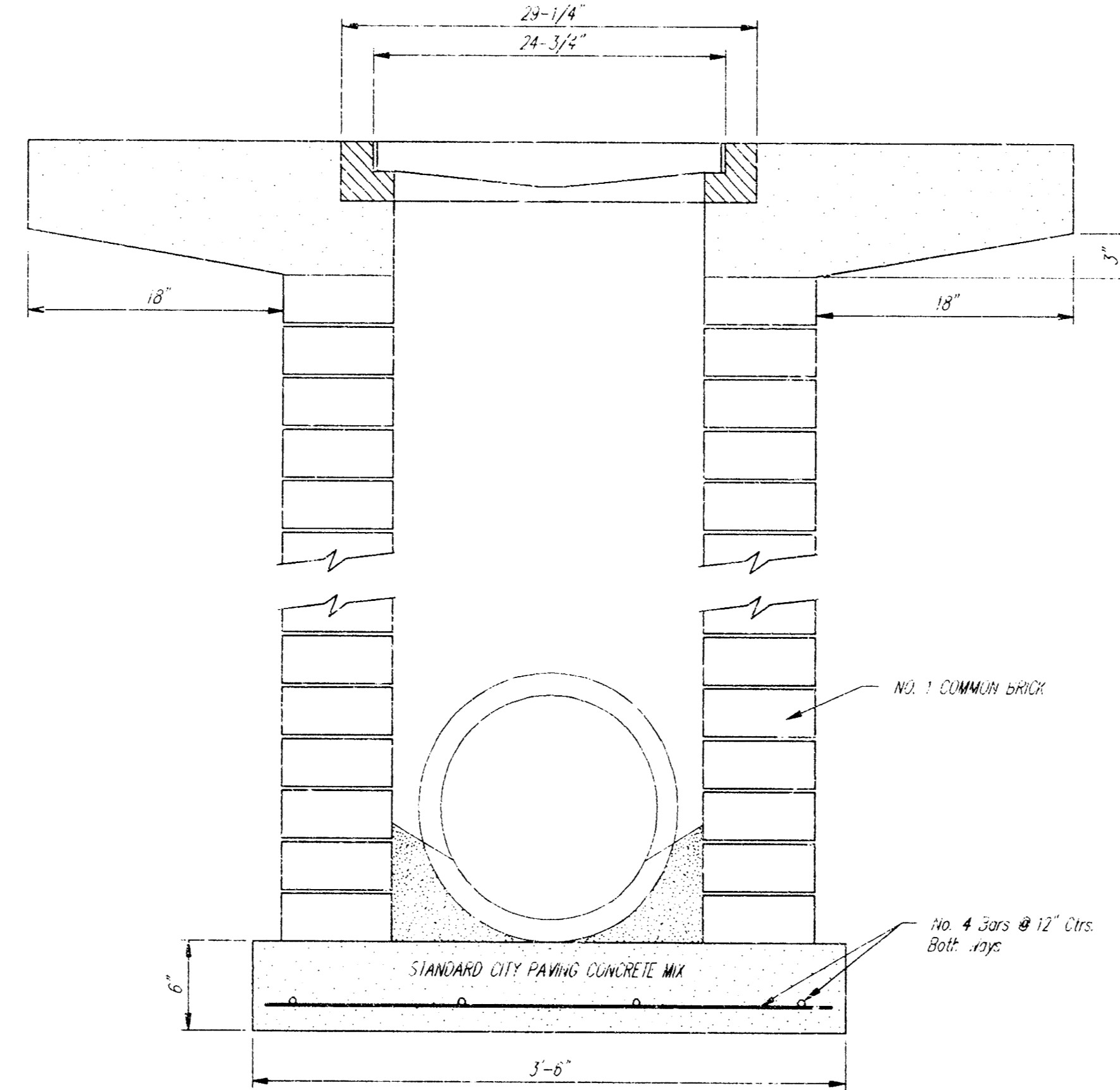
DEETER #2433 GRATE

24" x 24" Frame and Grate Detail

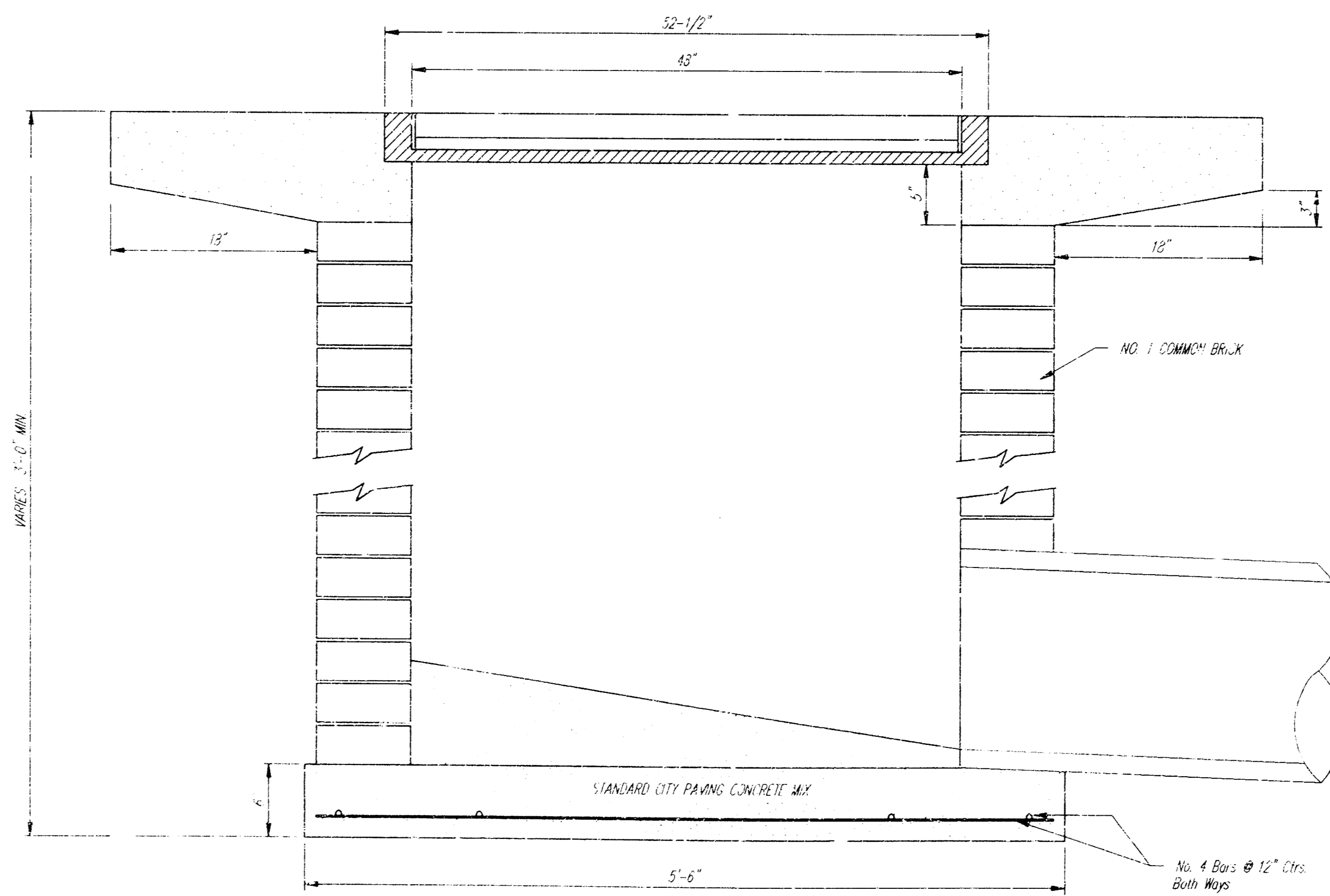
NOTE: Grates shall be imprinted on the top surface with "CITY OF WICHITA" using letters at least 1" in height. Other marking methods may be approved by the engineer.



Double 24" x 24" Frame Detail



Note: Concrete apron shall be constructed around the inlet when inlet is located in an ungraded area. Where the inlet is adjacent to pavement, the pavement thickness shall be tapered to the inlet in 18 inches as indicated on the detail.



CITY OF WICHITA STANDARD				
DROP INLET				
PART OF LOT 4, PARKWEST PLAZA				
BAUGHMAN COMPANY P. A.				
ENGINEERING, SURVEYING, & PLANNING				
PROJECT NUMBER				
850 PPS (807881)				
DESIGN	DRAWN	APPROVED	DATE	SCALE
STAFF			SEP. 1, 1990	
				SHEET OF 2 3

