

Sheet Index

| | |
|---------------------------|---|
| Title Sheet | 1 |
| Plan / Profile | 2 |
| Curb Inlet Detail | J |
| Drop Inlet Detail | 4 |
| Double Faced Inlet Detail | 5 |
| Copy Of Plat | 6 |

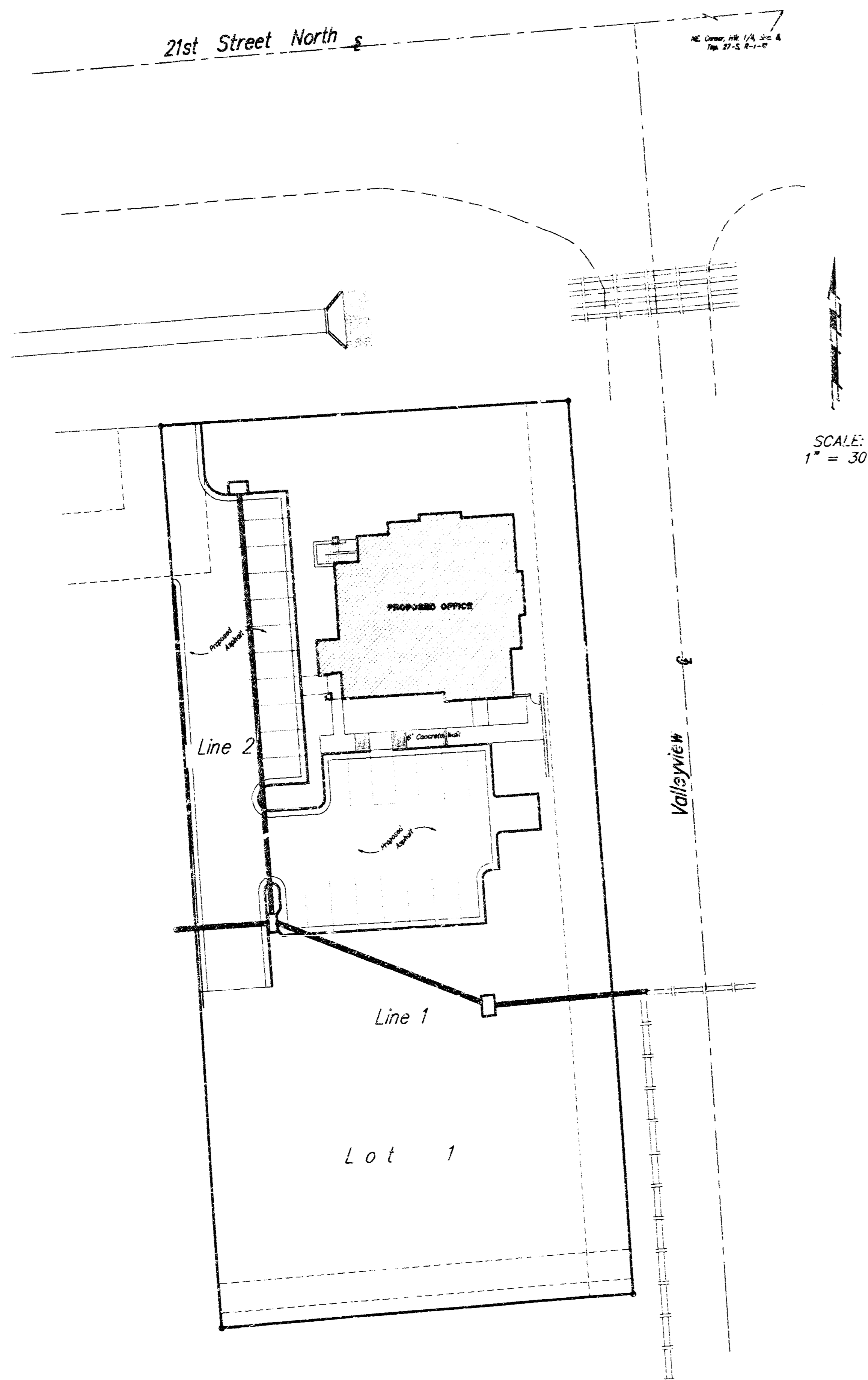
**PRIVATE STORM WATER SEWER TO SERVE
LOT 1, TIMBER RIDGE 3rd ADDITION**

CITY OF WICHITA, KANSAS
Michael E. Lindebak, P.E. City Engineer

Private Project Number

851 PPS (607861)

OCTOBER, 1998



General Notes:

- Contractor will be required to provide notice to utility companies a minimum of twenty-four (24) hours prior to any excavation, as follows:

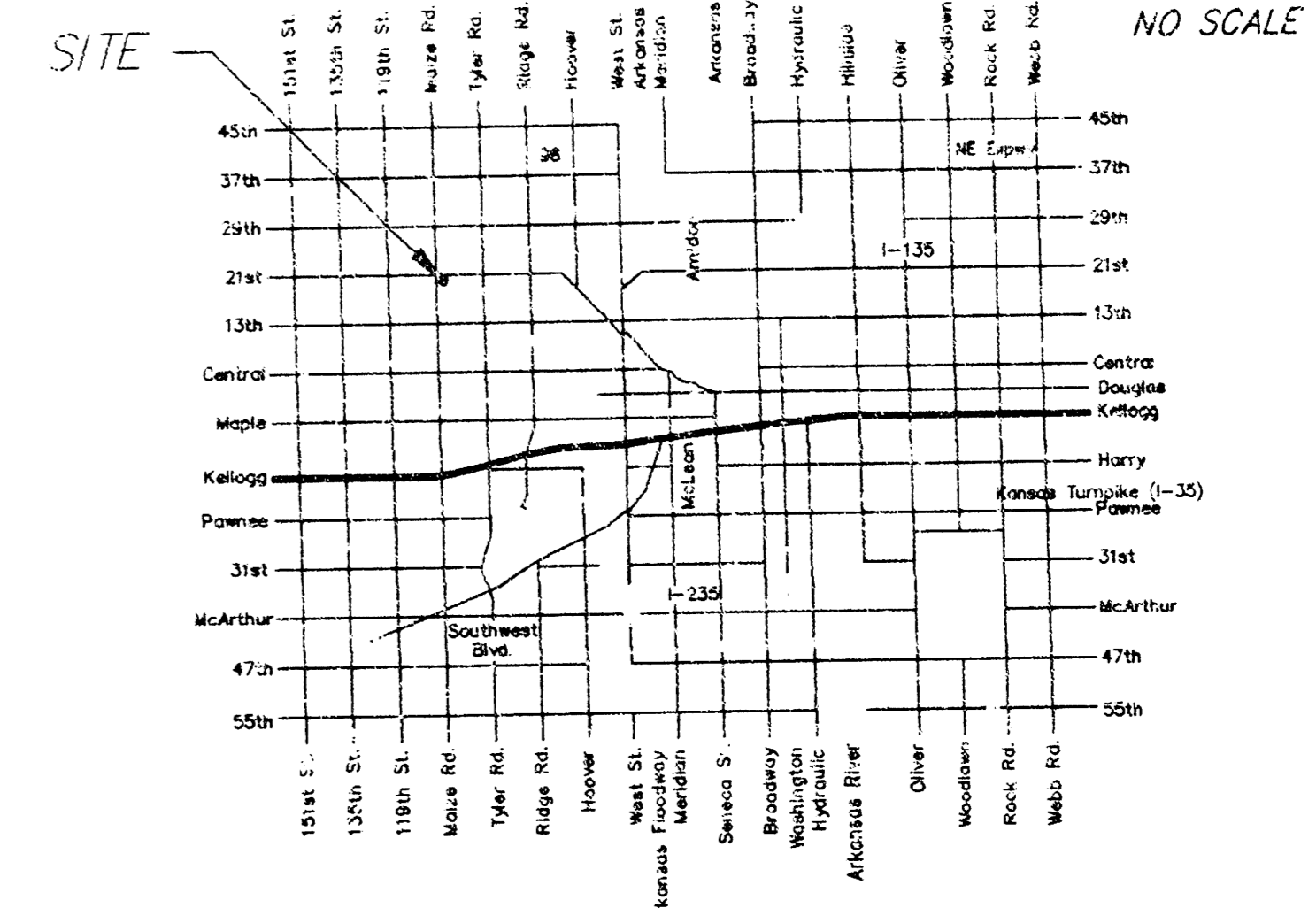
| | |
|-----------------|----------|
| Kansas One-Call | 687-2470 |
|-----------------|----------|

The Contractor must notify the following in case of an emergency:

| | |
|-------------------------------------|----------|
| Cablevision | 262-4270 |
| or | 263-2061 |
| Kansas Gas Service Company | 832-3121 |
| Kansas Gas & Electric Company | 261-6512 |
| Peoples Nat. Gas Company | 342-8811 |
| Southwestern Bell Telephone Company | 268-2245 |
| City of Wichita Water Department | 263-4908 |
| City of Wichita Sewer Maintenance | 268-4071 |
- Utility service lines, poles, valve boxes, meters, and etcetera are to be adjusted as necessary by others prior to construction unless the plans specifically call for their adjustment by the Contractor or unless the plans specifically identify a utility to be adjusted by its owner during construction. Existing utilities and their location, as shown on the plans, represent the best information obtainable for design. The contractor will be required to work around existing utilities within the right-of-way which do not conflict with proposed construction.
- Rubble from the removal of miscellaneous structures and excess excavation which is to be wasted shall be disposed of on sites to be provided by the Contractor. These sites shall be approved by the Engineer as to suitability, appearance and site location. Locations that, in the opinion of the Engineer, will leave an unsightly appearance will not be approved. All disposal sites must be approved by the Kansas Department of Health and Environment. Material either stockpiled or disposed of in a flood plain would require a Kansas State Board of Agriculture permit. Any material dumped in waters of the United States or wetlands is subject to U.S. Corps. of Engineers permitting regulations. Any material buried or stockpiled beyond approved construction limits would require additional archaeological investigations unless buried in a previously approved borrow location.
- The Contractor shall be responsible for preserving property irons. The Contractor will be required to re-establish any property irons which are damaged or destroyed by his construction operations. Such irons shall be re-established by a licensed land surveyor in accordance with state law.

APPROVED AS NOTED
BY CITY ENGINEER OF WICHITA
Storm Sewers VRH 10/1/98

NOTE TO CONTRACTORS
Installation, inspection and testing for this project is to be provided by a Licensed Consulting Engineering Firm under contract with the Owner/Developer. Said inspection to be in accordance with the City of Wichita standard construction engineering practices and certified by a Licensed Professional Engineer. No work shall be performed in dedicated easements or public right-of-way by the Contractor without such inspection nor shall any work be commenced without written authorization by the City Engineer. All Construction and Materials shall comply with the City of Wichita Specifications and Standards (on file and available in the City Engineer's Office).



Vicinity Map

Legal Description:

LOT 1, TIMBER RIDGE 3RD ADDITION, WICHITA, SEDGWICK COUNTY, KANSAS

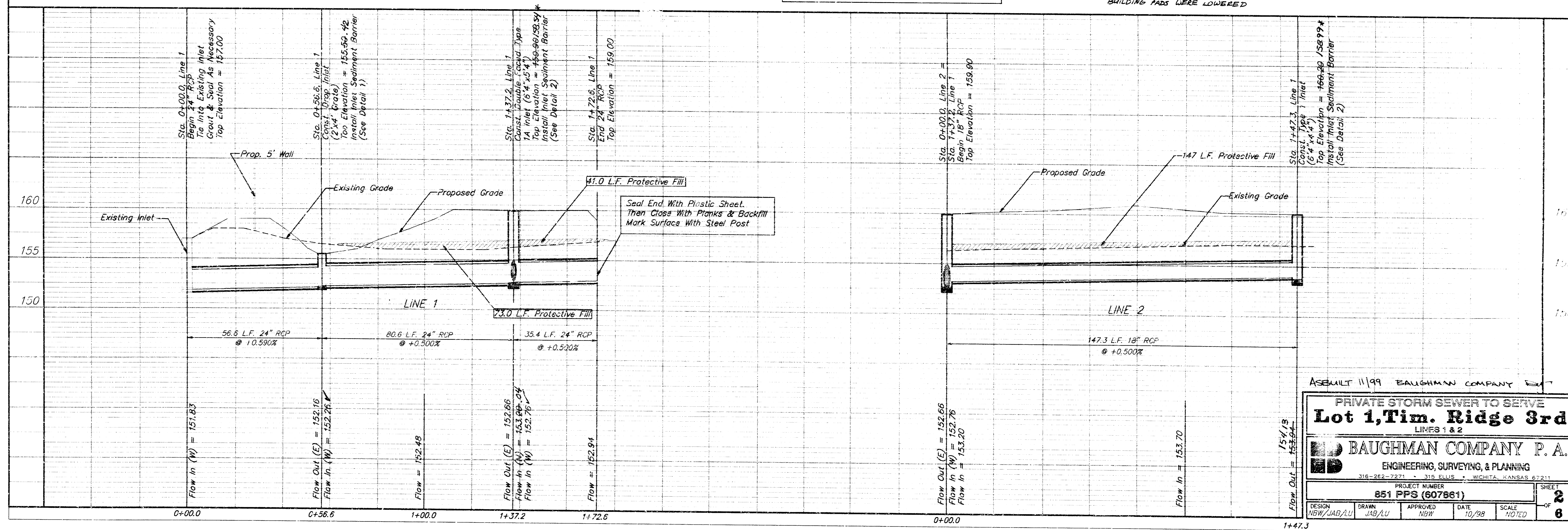
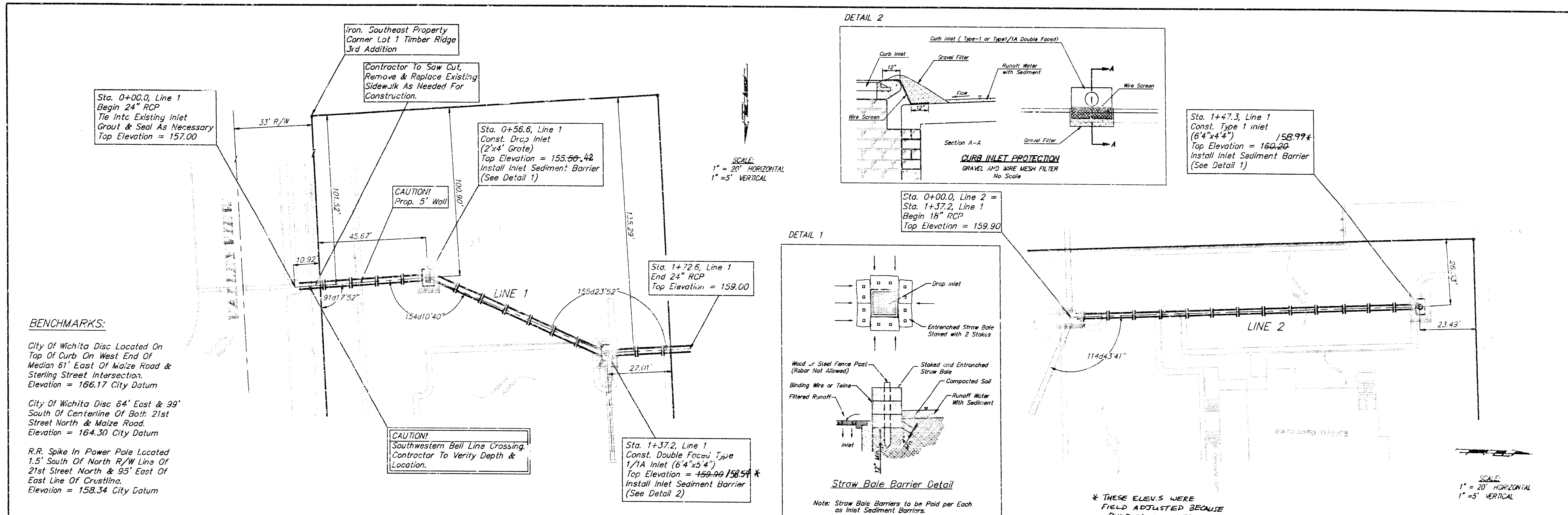
Benchmarks:

- CITY OF WICHITA DISC LOCATED ON TOP OF CURB ON WEST END OF MEDIAN, 61' EAST OF MAIZE ROAD & STERLING STREET INTERSECTION. ELEVATION = 166.17 CITY DATUM
- CITY OF WICHITA DISC 64' EAST & 99' SOUTH OF CENTERLINE OF BOTH 21st STREET NORTH & MAIZE ROAD. ELEVATION = 164.30 CITY DATUM
- R.R. SPIKE IN POWER POLE LOCATED 1.5' SOUTH OF NORTH R/W LINE OF 21st STREET NORTH & 95' EAST OF EAST LINE OF CRESTLINE. ELEVATION = 158.34 CITY DATUM

BOOKED
6-7-00
MCS
D-263

7/24/98
2-1-98

PROJECT INSPECTED BY BAUGHMAN Co.
ASBUILT 11/99
BAUGHMAN COMPANY P. A.
ENGINEERING, SURVEYING, & PLANNING
316-262-2771 • 315 ELLIS • WICHITA, KANSAS 67211



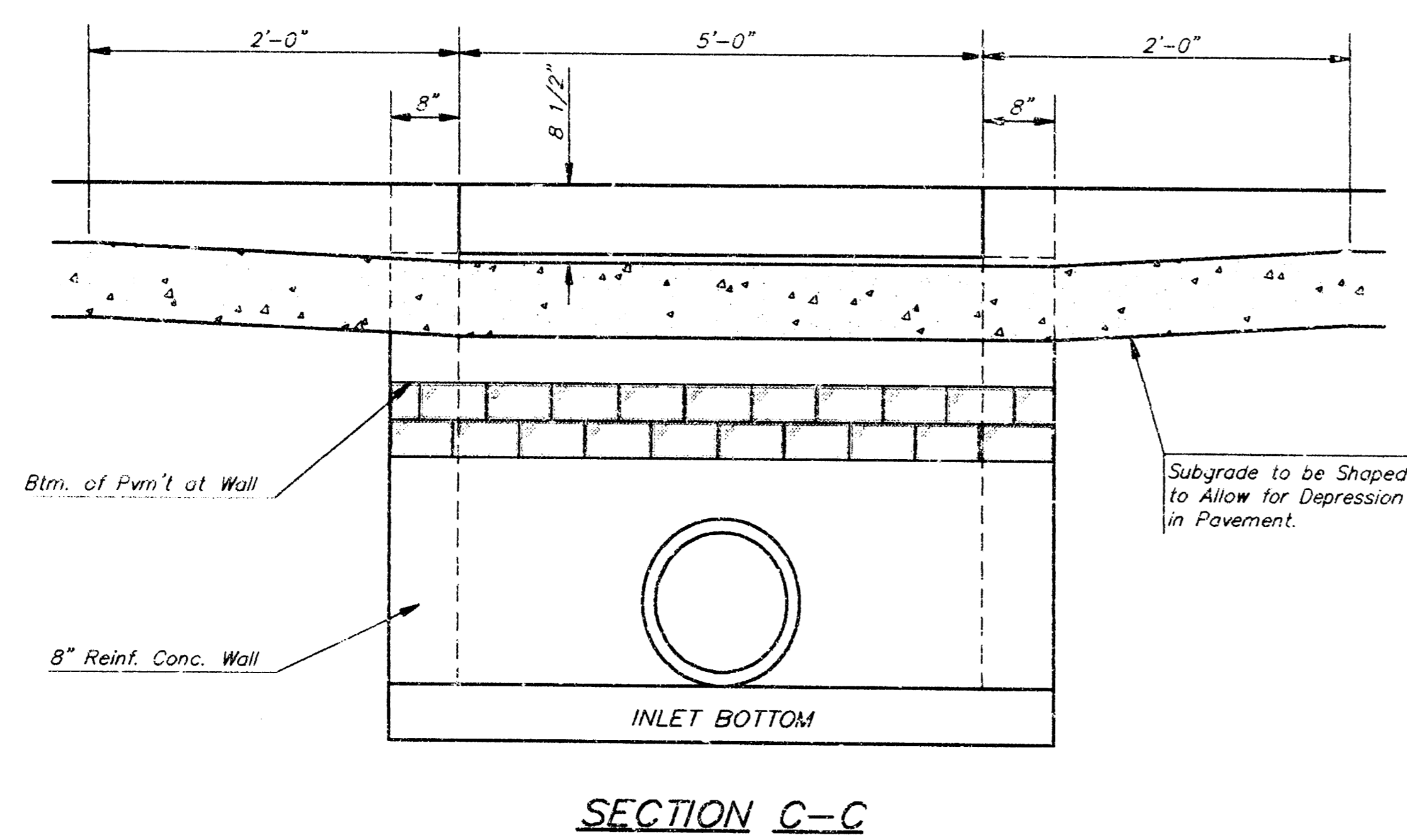
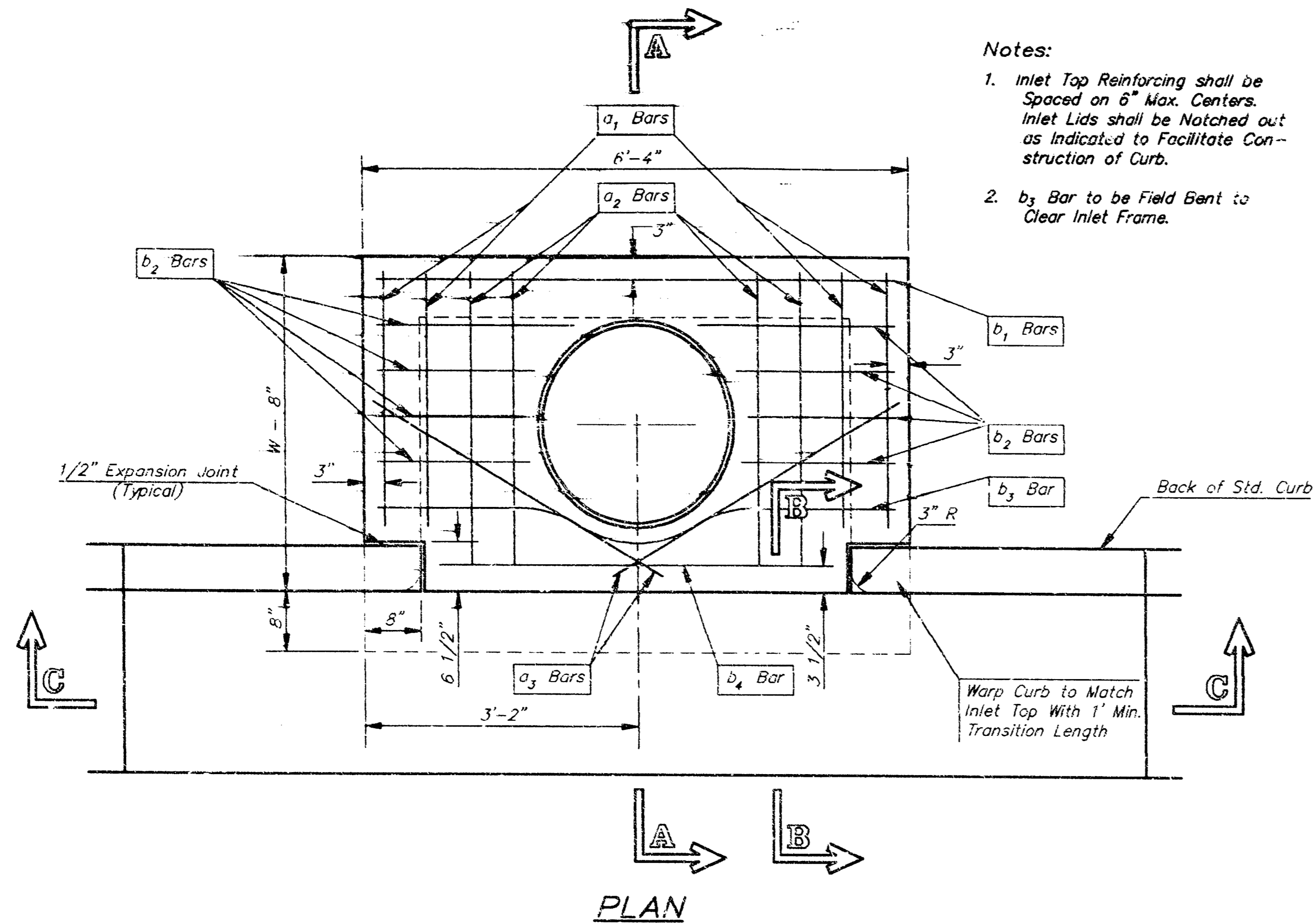
ASBUILT 11/99 BAUGHMAN COMPANY

PRIVATE STORM SEWER TO SERVE
Lot 1, Tim. Ridge 3rd
 LINES 1 & 2

BAUGHMAN COMPANY P.A.
 ENGINEERING, SURVEYING, & PLANNING
 318-262-7271 • 318 ELLIS • WICHITA, KANSAS 67211

PROJECT NUMBER: **851 PPS (607861)**

DESIGN: NEW/JAB/LU DRAWN: JRS/LU APPROVED: NSW DATE: 10/98 SCALE: NOTED SHEET: **2** OF **6**



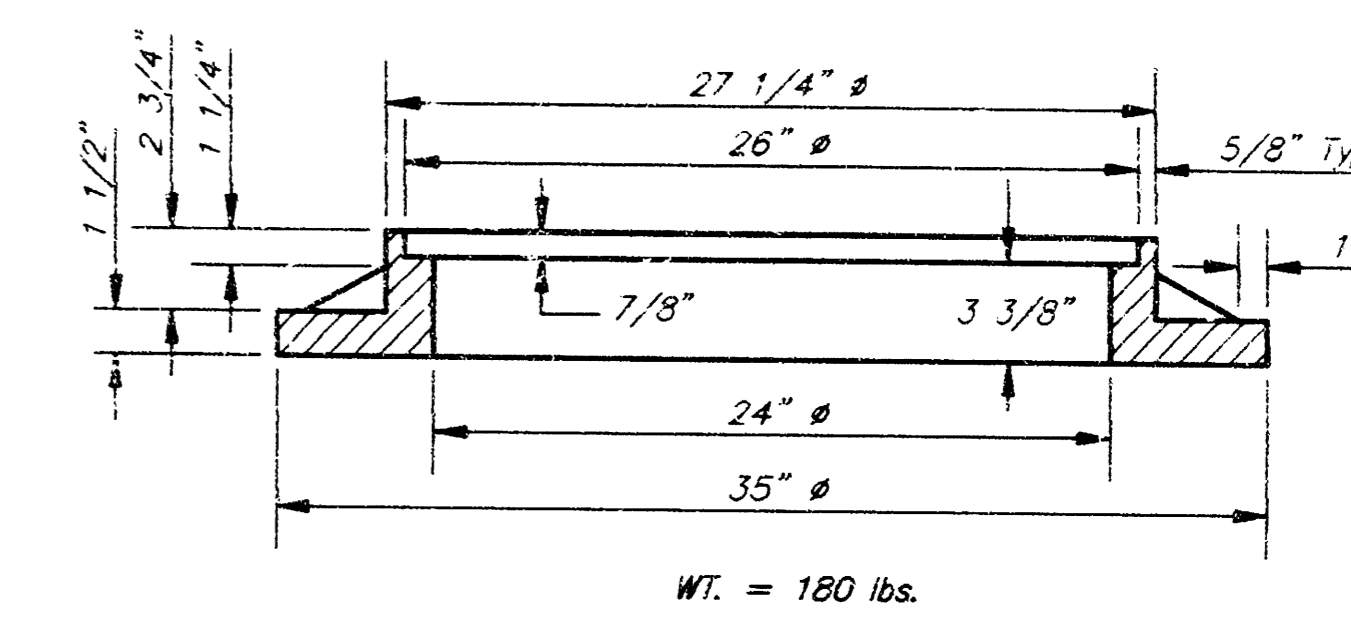
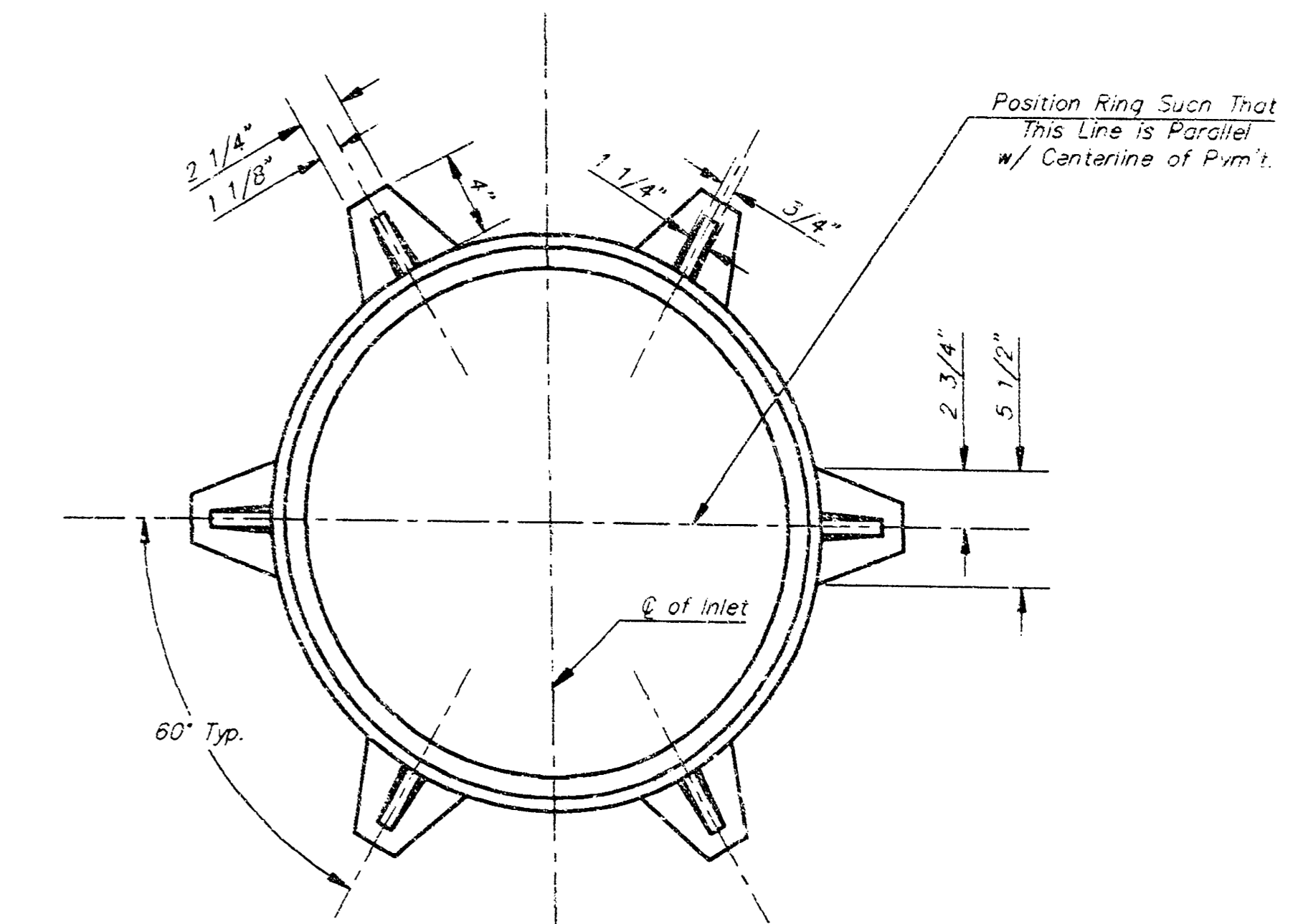
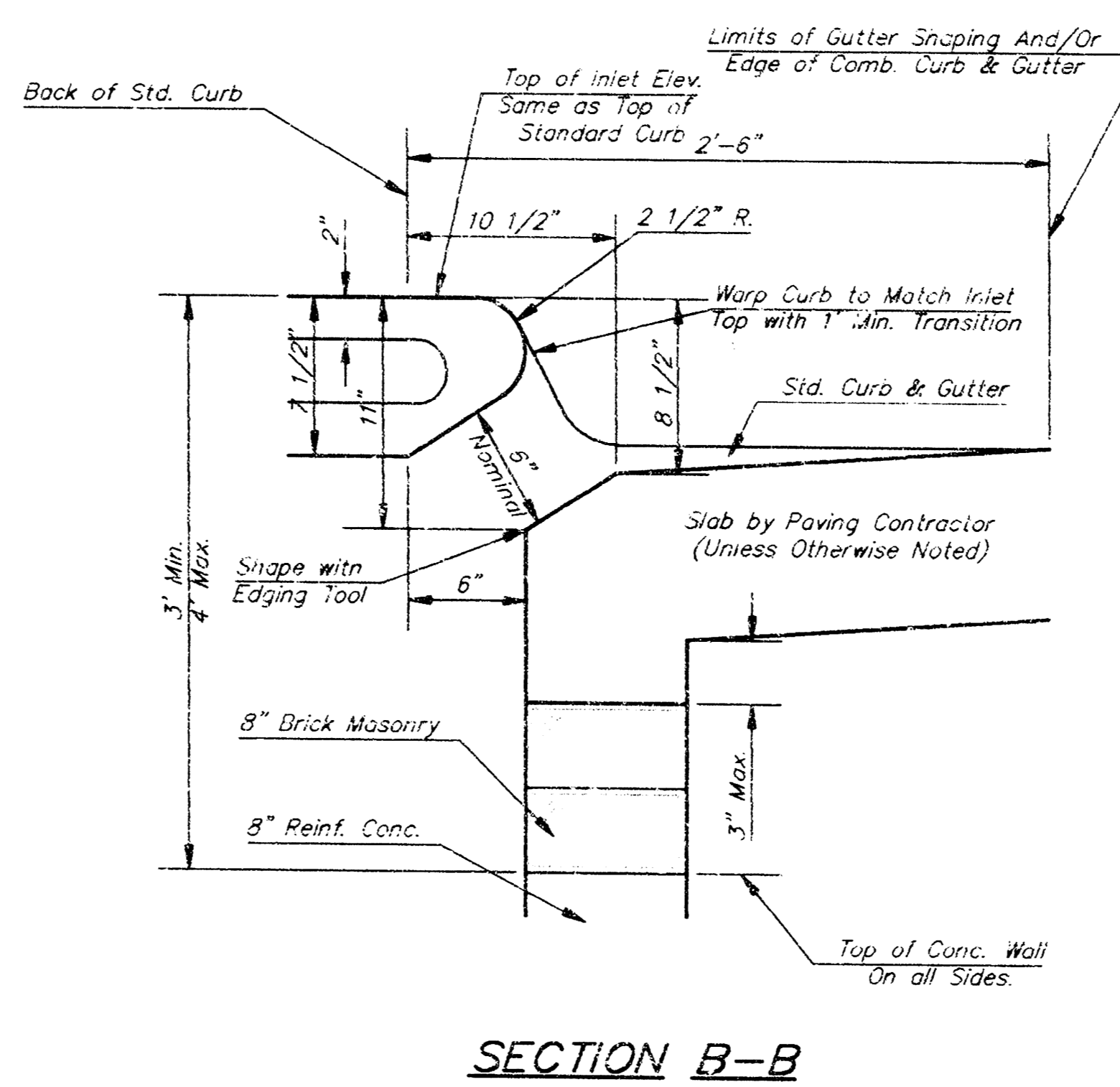
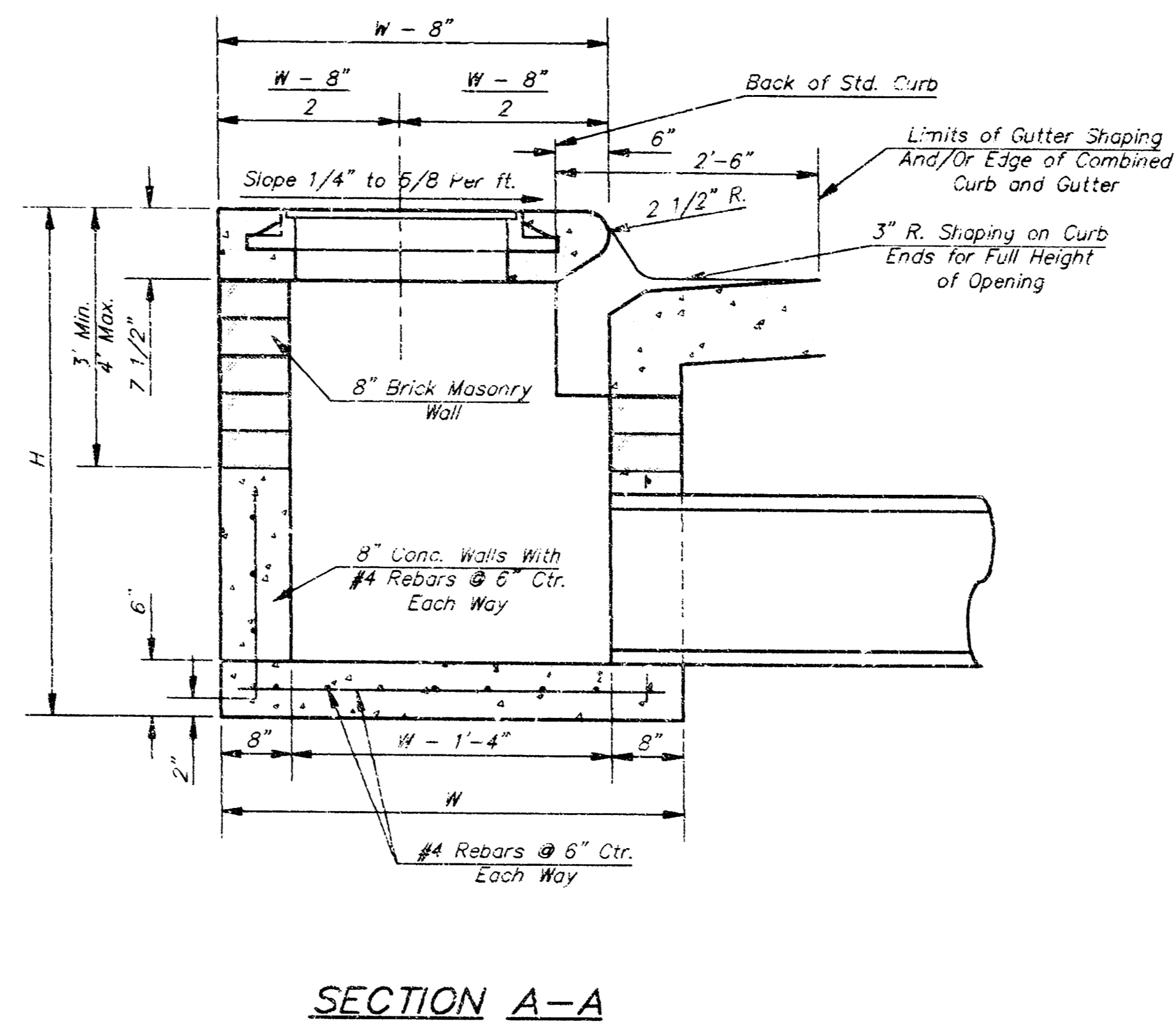
STEEL SCHEDULE

| BAR | a ₁ | | | | | | | | | b ₂ | b ₃ | b ₄ | WT. Lbs. |
|--------|----------------|----------------|----------------|-------|-------|-------|-------|-------|-------|----------------|----------------|----------------|----------|
| | a ₁ | a ₂ | a ₃ | #4-4" | #5-4" | #6-4" | #7-4" | #8-4" | #4 | | | | |
| NUMBER | 4 | 4 | 2 | 1 | 3 | 5 | 7 | 9 | 6 | 1 | 1 | | |
| SIZE | #4 | #4 | #4 | #4 | #4 | #4 | #4 | #4 | #4 | #4 | #6 | | |
| LENGTH | W=4'-4" | 5'-7" | 6'-7" | 4'-0" | 6'-1" | - | - | - | 1'-9" | 6'-2" | 4'-5" | 60± | |
| | W=5'-4" | 7'-7" | 8'-7" | 5'-0" | 6'-1" | - | - | - | 1'-9" | 6'-2" | 4'-5" | 81± | |
| | W=6'-4" | 9'-7" | 10'-7" | 6'-0" | 6'-1" | - | - | - | 1'-9" | 6'-2" | 4'-8" | 101± | |
| | W=7'-4" | 11'-7" | 12'-7" | 7'-0" | 6'-1" | - | - | - | 1'-9" | 6'-2" | 4'-8" | 121± | |
| | W=8'-4" | 13'-7" | 14'-7" | 8'-0" | 6'-1" | - | - | - | 1'-9" | 6'-2" | 4'-8" | 141± | |

Note: a₃ Bars to be Placed Approx. 2" Below Top of Inlet Cover.

STANDARD CURB INLET PRECAST TOPS

| W | PRE-CAST TOP SIZE | PIPE SIZE | CU. YD. CONC. |
|-------|--------------------|---------------|---------------|
| 4'-4" | 3'-8" 6'-4" 7 1/2" | 21" & SMALLER | 0.36± |
| 5'-4" | 4'-8" 6'-4" 7 1/2" | 24" & 30" | 0.51± |
| 6'-4" | 5'-8" 6'-4" 7 1/2" | 36" & 42" | 0.64± |
| 7'-4" | 6'-8" 6'-4" 7 1/2" | 48" & 54" | 0.77± |
| 8'-4" | 7'-8" 6'-4" 7 1/2" | 60" & 66" | 0.90± |



- GENERAL NOTES**
- Concrete tops to be installed on thin mortar cushion to insure full support along brick walls. Concrete tops may be cast in place or precast. Concrete used for inlet construction shall be concrete pavement mix.
 - Contractor shall have the option of constructing 8" brick masonry walls between the concrete inlet base and top on this inlet when W=6'-4" and H=7'-0" or less.
 - Inlet invert shall be shaped with 8 sack sand mix concrete to create flow channels and to increase hydraulic efficiency such that the inlet will be self cleaning between all inlet and/or outlet pipes.
 - The ends of all pipes installed in inlets shall be cut off flush with the inside face of the inlet wall.

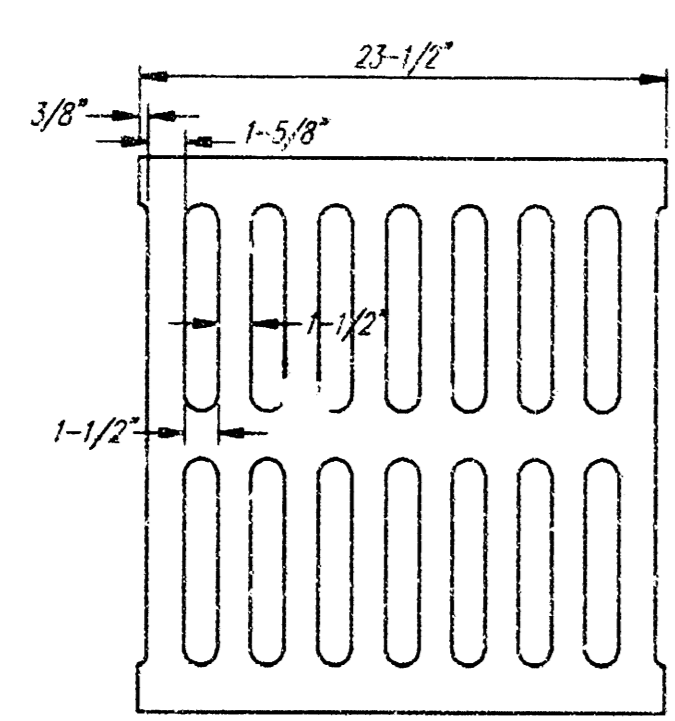
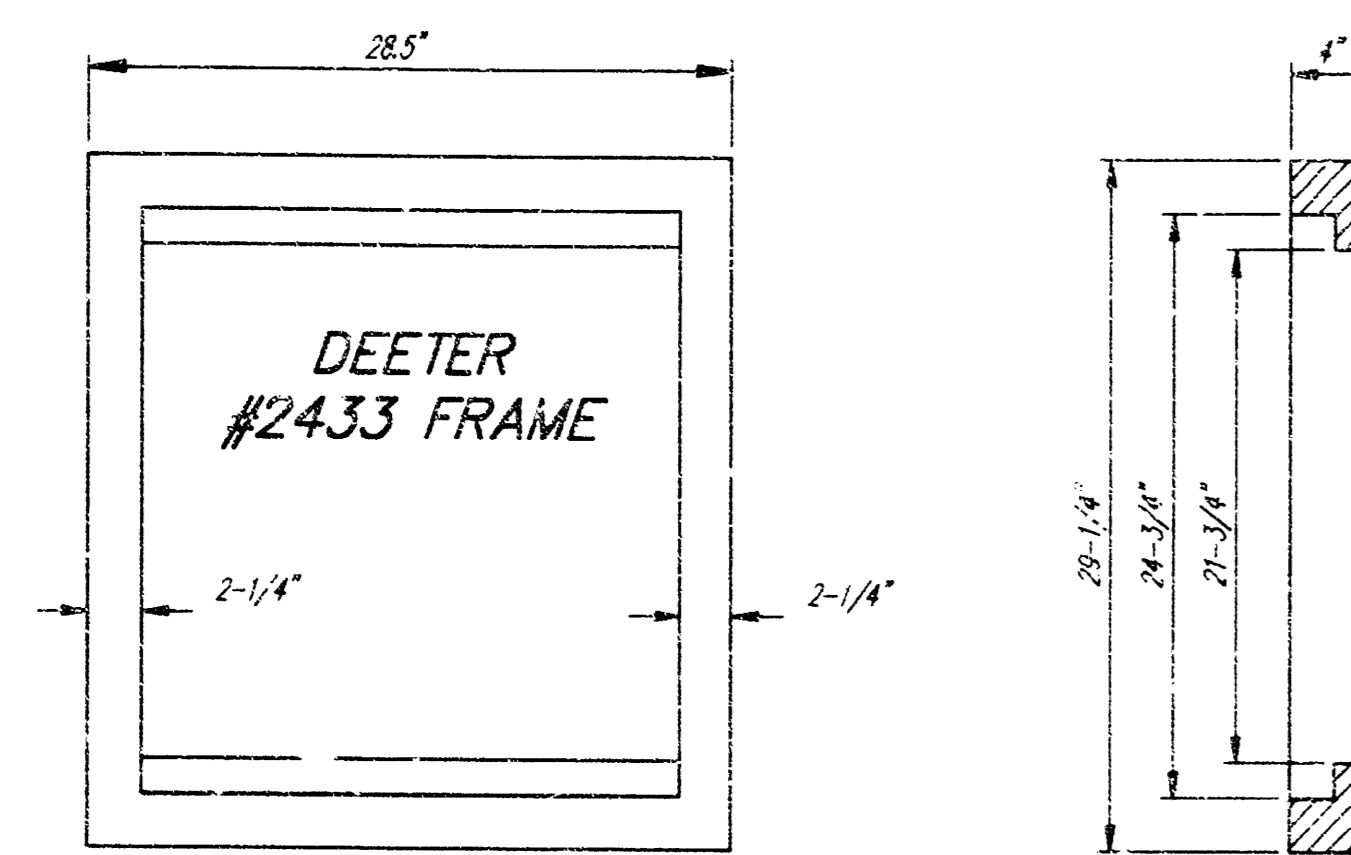
CITY OF WICHITA, KANSAS
TYPE 1 CURB INLET
 INLET OPENING = 6"X5'-0"

BAUGHMAN COMPANY P. A.
 ENGINEERING, SURVEYING & PLANNING
 318-262-7271 • 315 E. L.S. • WICHITA, KANSAS 67211

PROJECT NUMBER
851 PPS (607861)

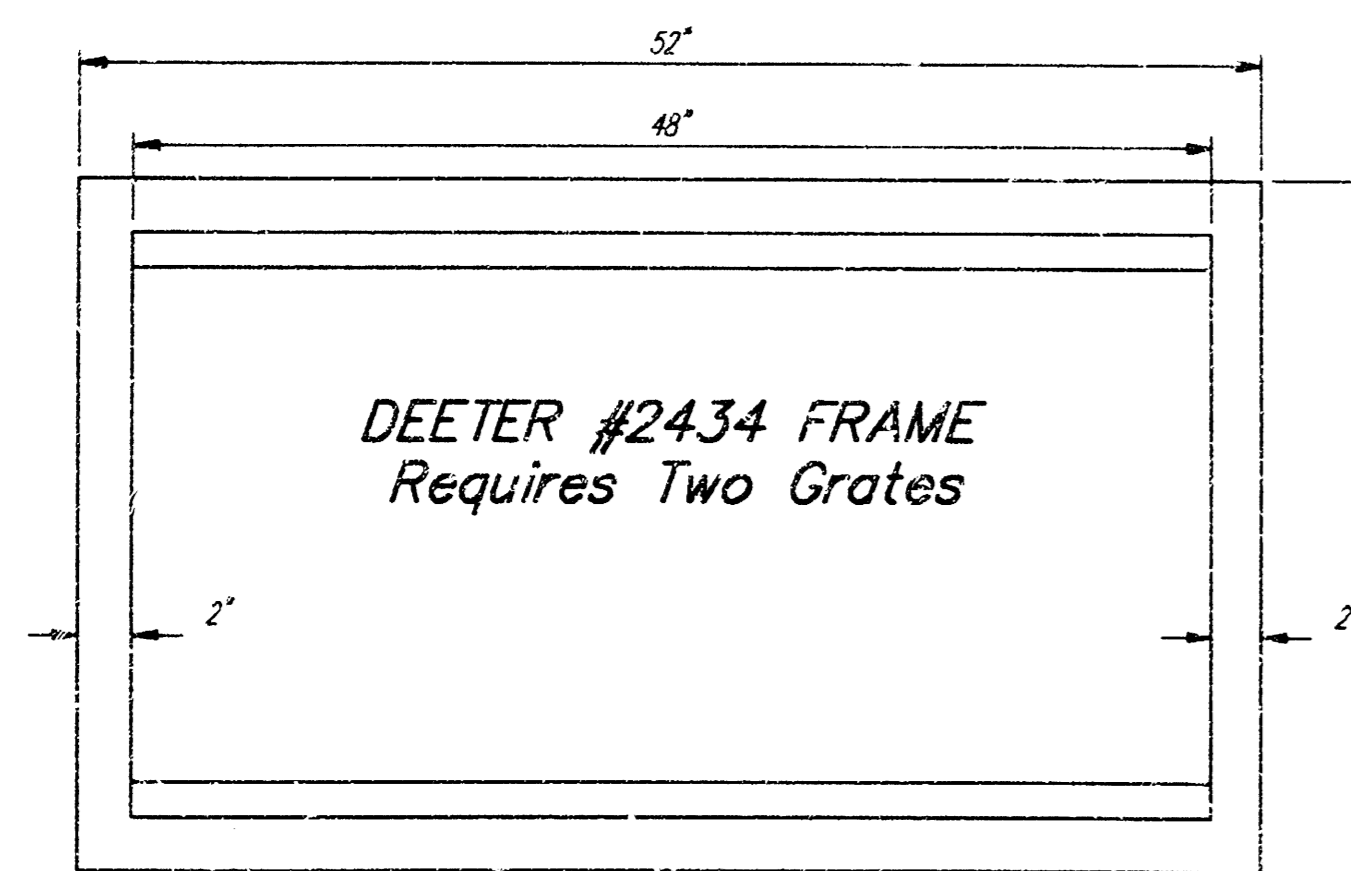
DESIGN: C.O.W. DRAWN: STAFF APPROVED: NBW DATE: 10/98 SCALE: NONE

SHEET **3** OF **6**



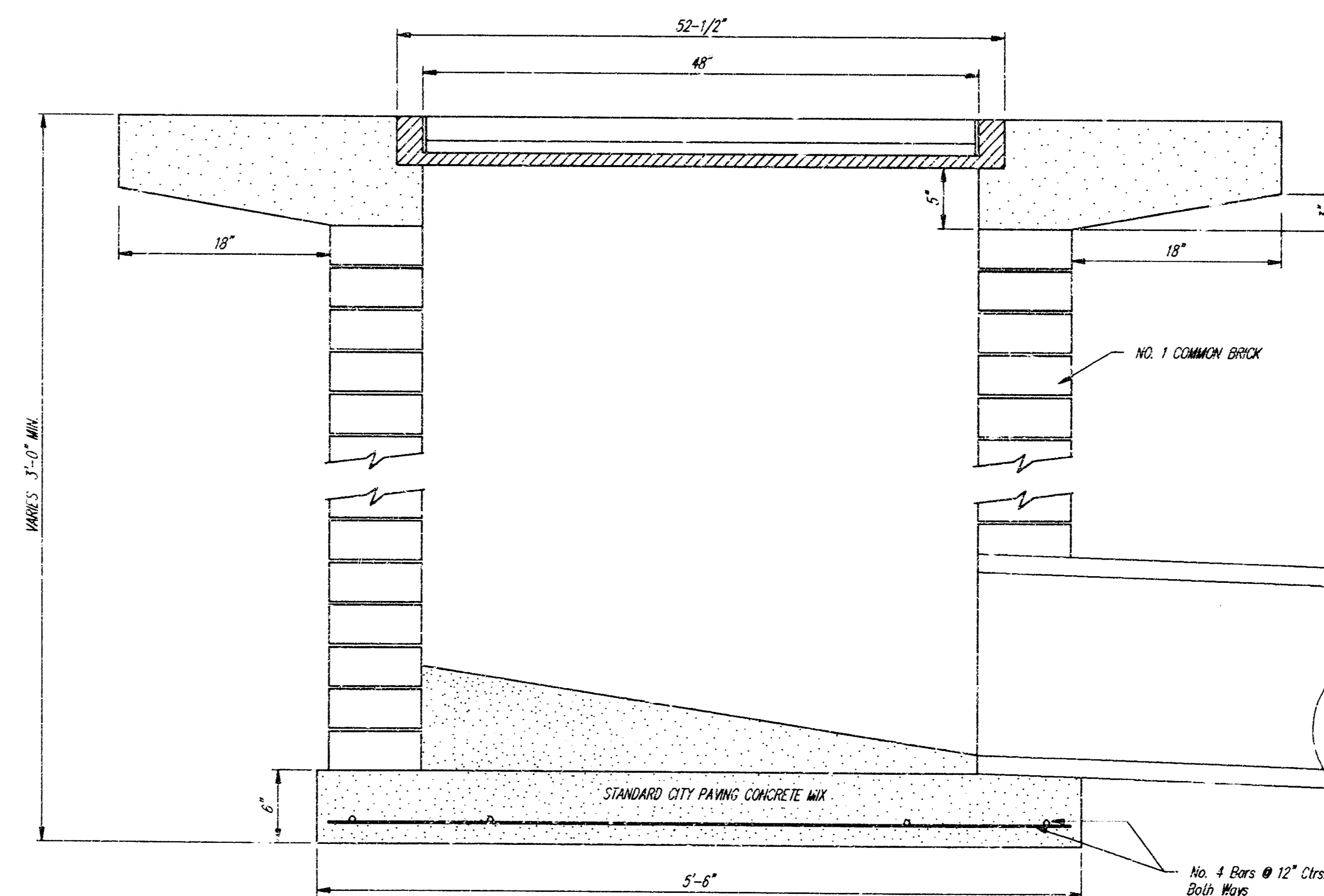
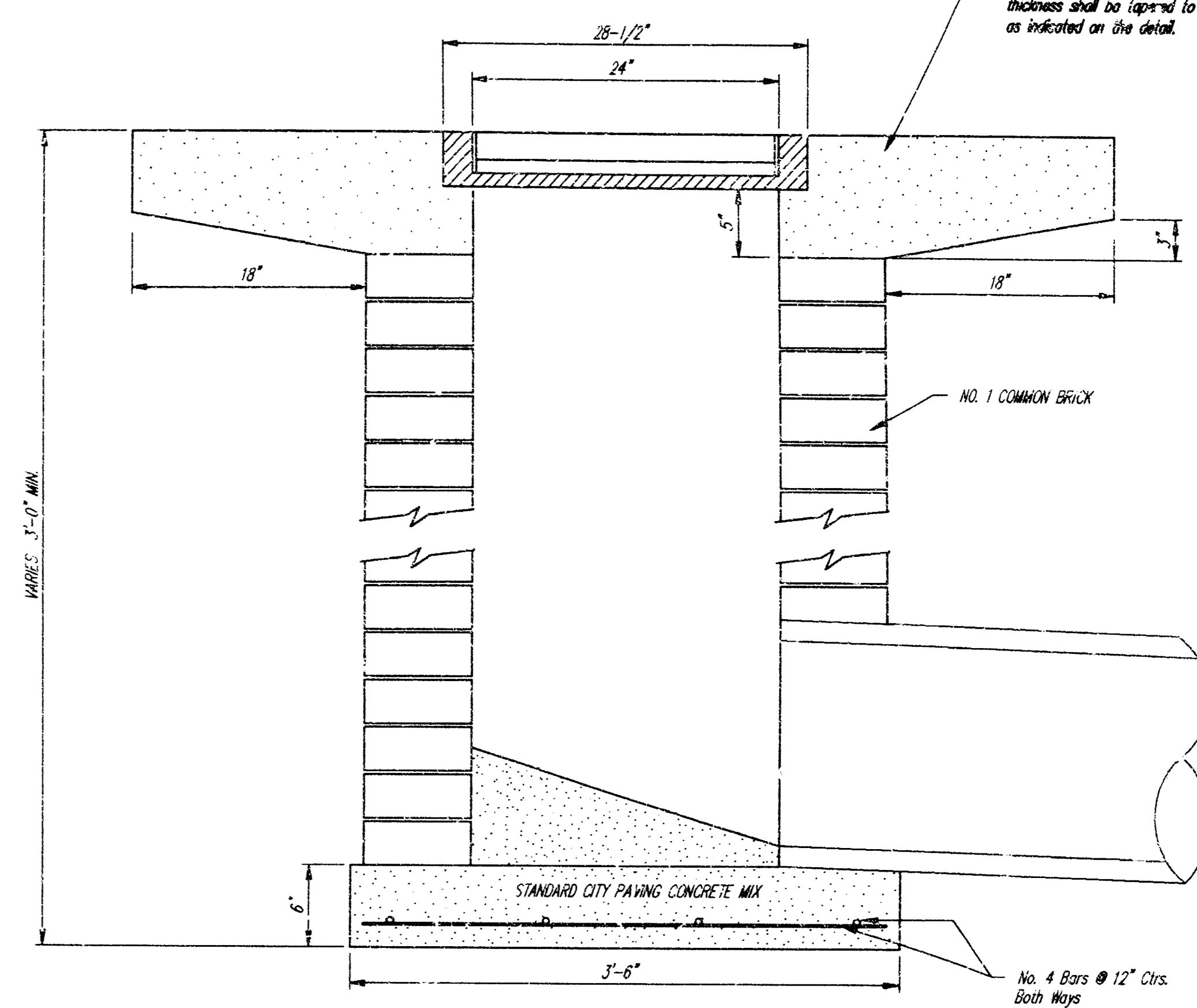
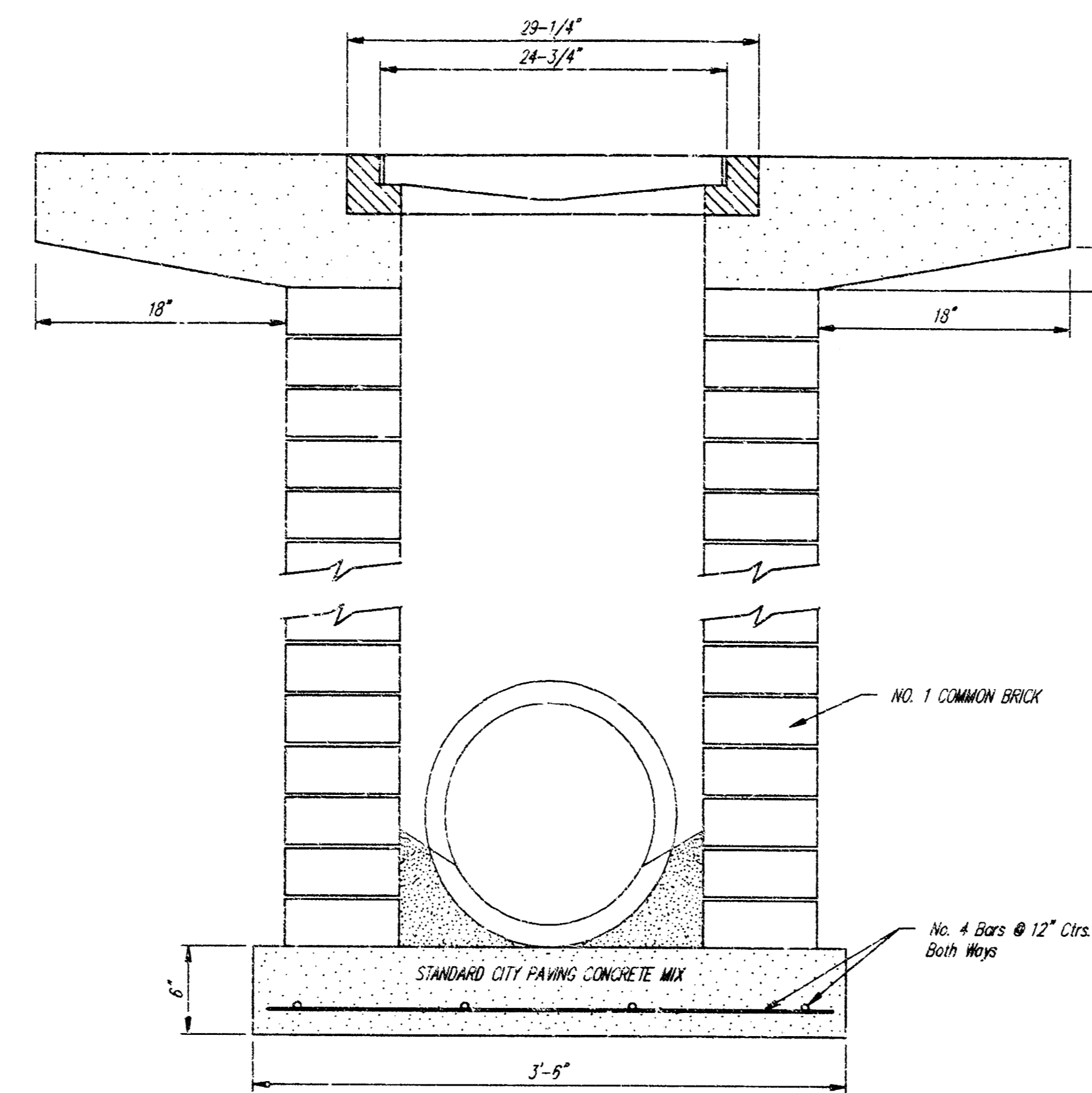
DEETER #2433 GRATE

24" x 24" Frame and Grate Detail



Double 24" x 24" Frame Detail

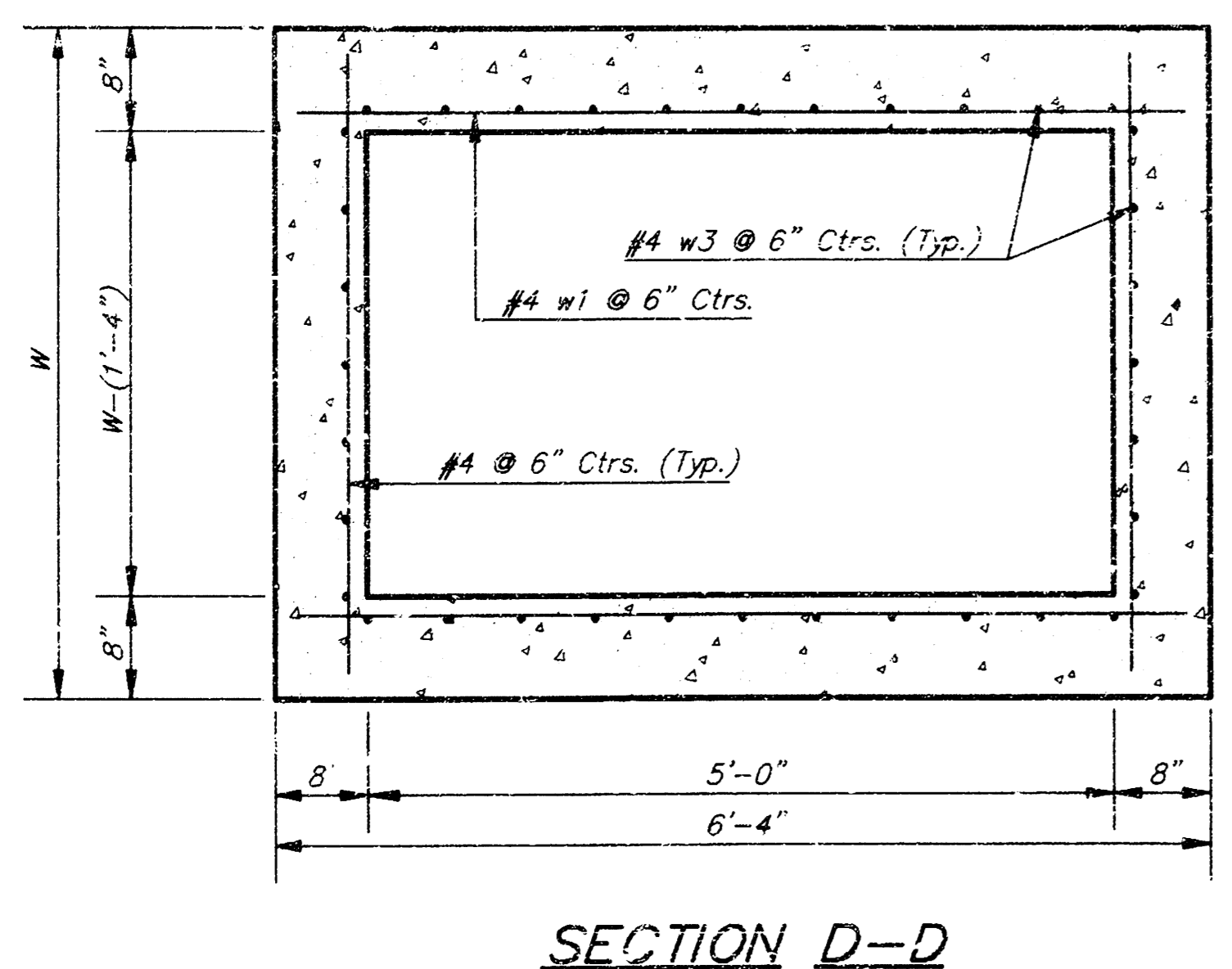
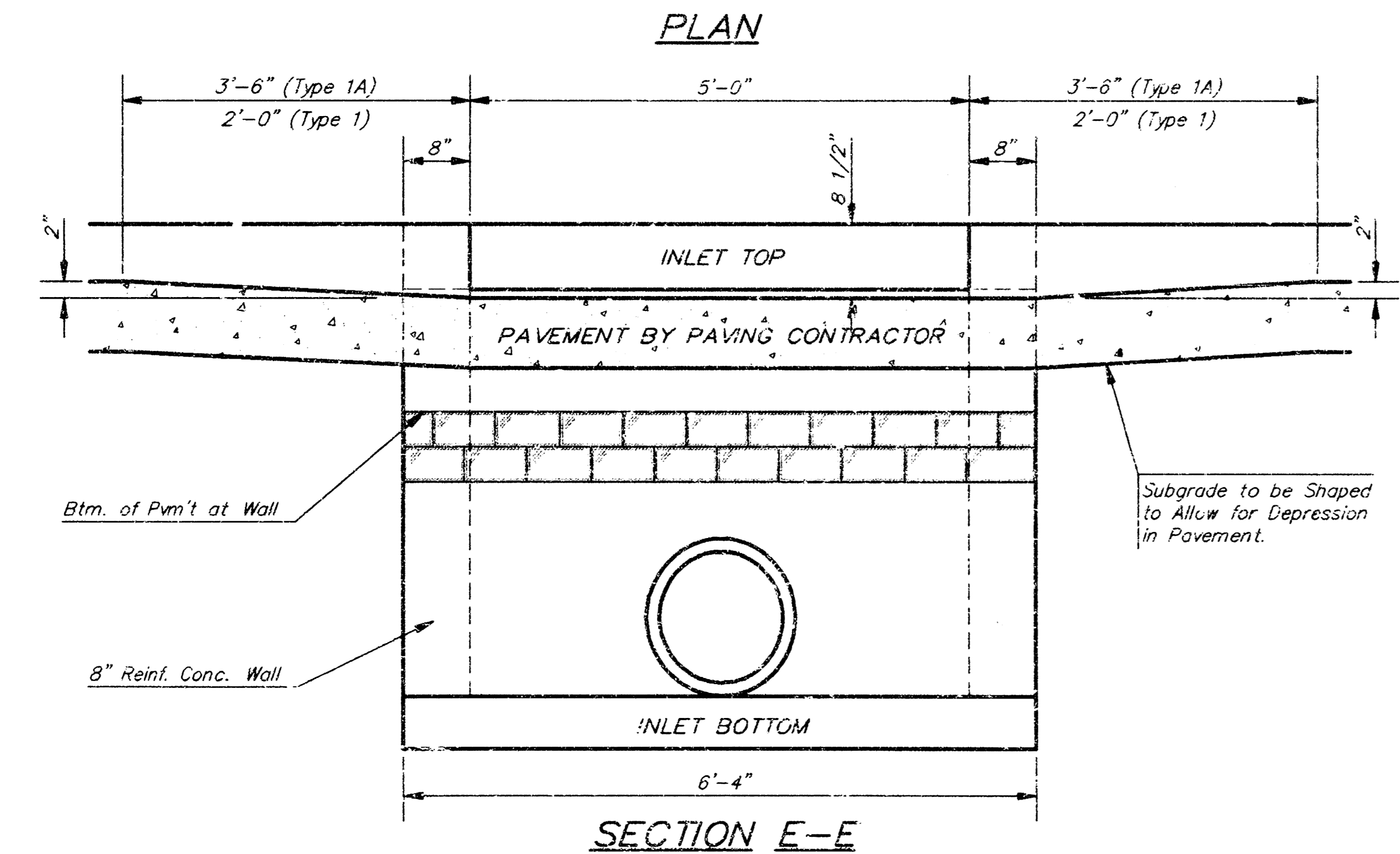
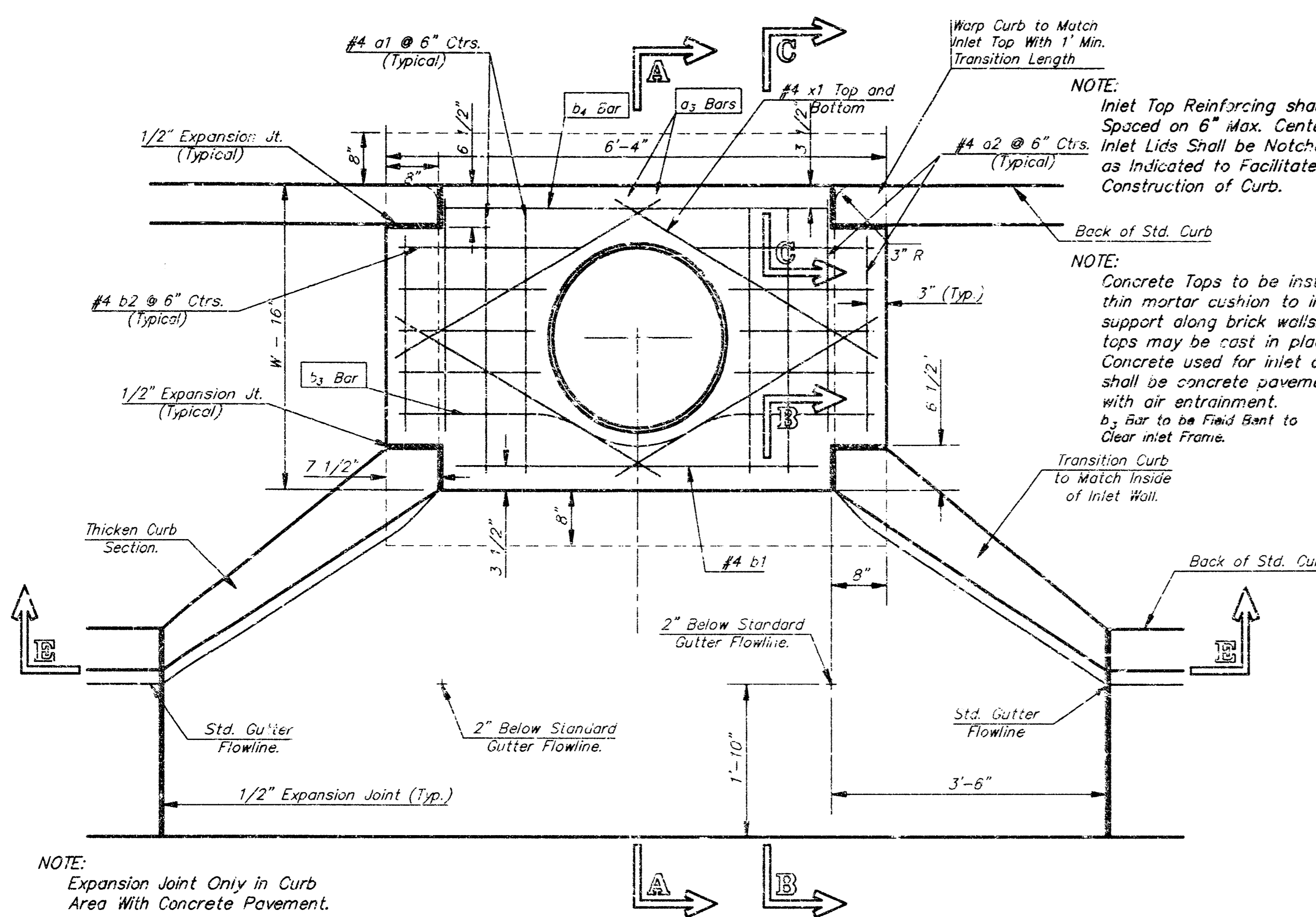
NOTE: Grates shall be imprinted on the top surface with "CITY OF WICHITA" using letters at least 1" in height. Other marking methods may be approved by the engineer.



City of Wichita Standard
Drop Inlet
 DETAIL

BAUGHMAN COMPANY P. A.
 ENGINEERING, SURVEYING, & PLANNING
 318-252-7271 • 315 ELLIS • WICHITA, KANSAS 67211

| | | | | | |
|--------|-------|----------|-------|-------|--------|
| DESIGN | DRAWN | APPROVED | DATE | SCALE | SHEET |
| Staff | Staff | NBW | 10/98 | NONE | 4 OF 6 |



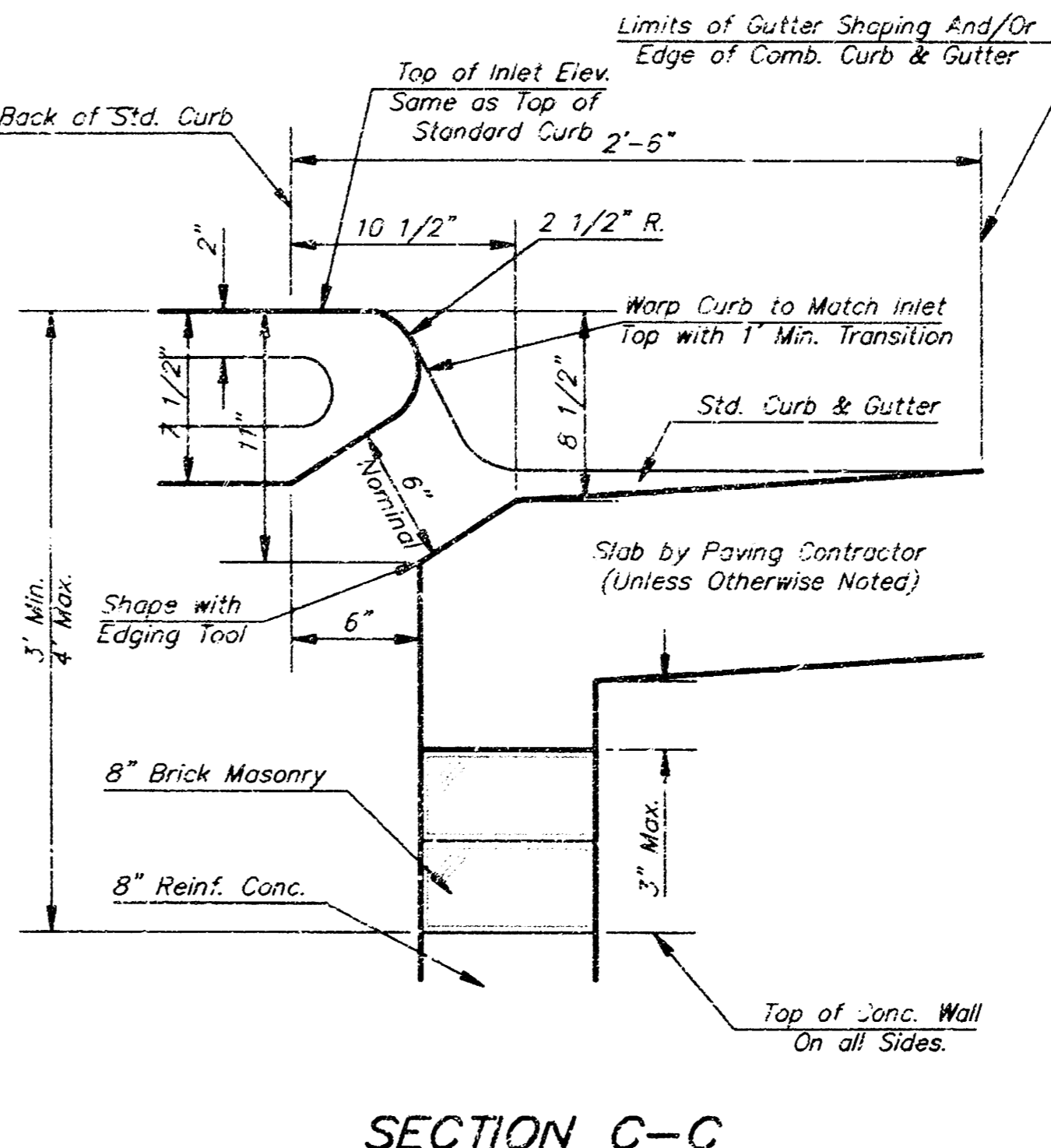
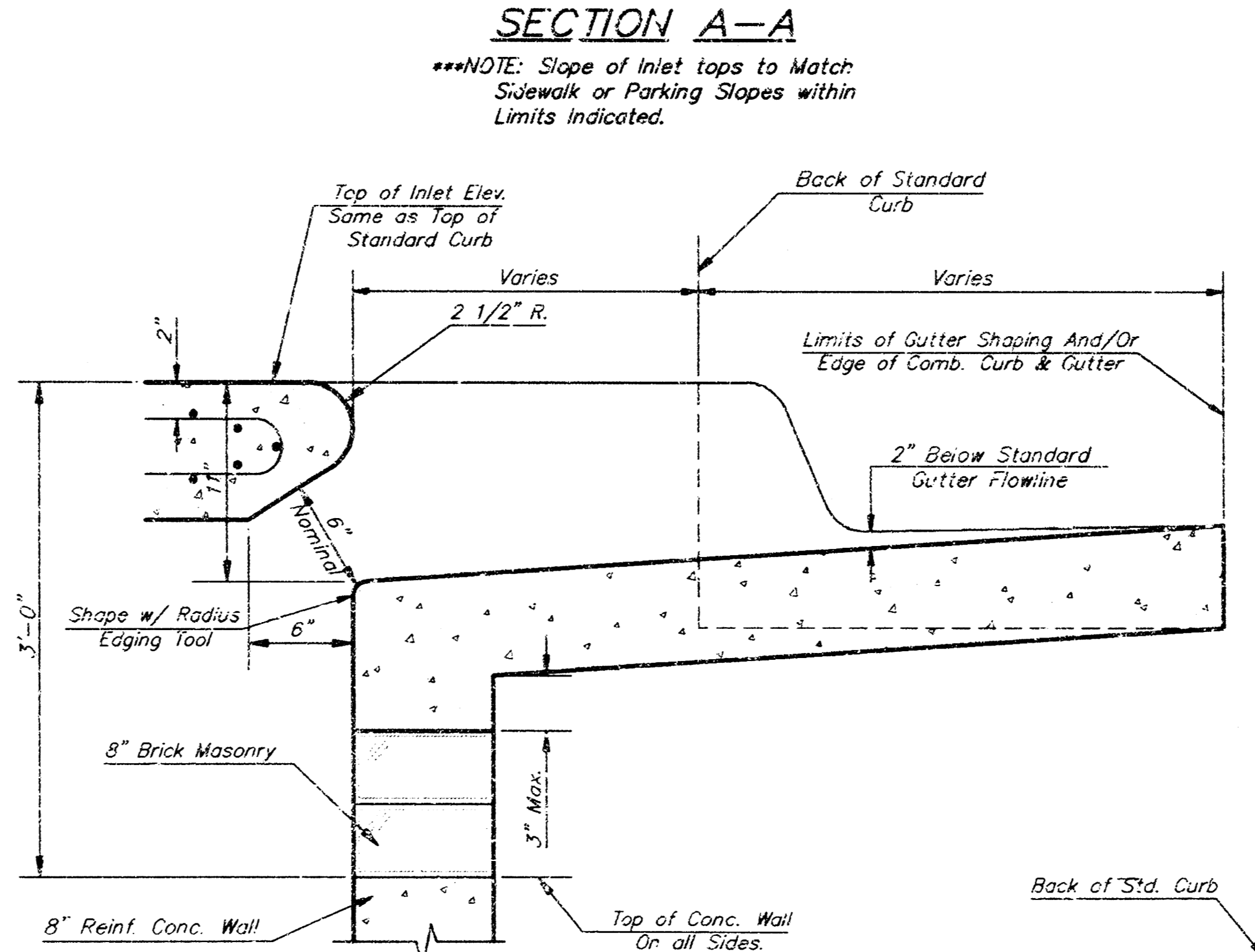
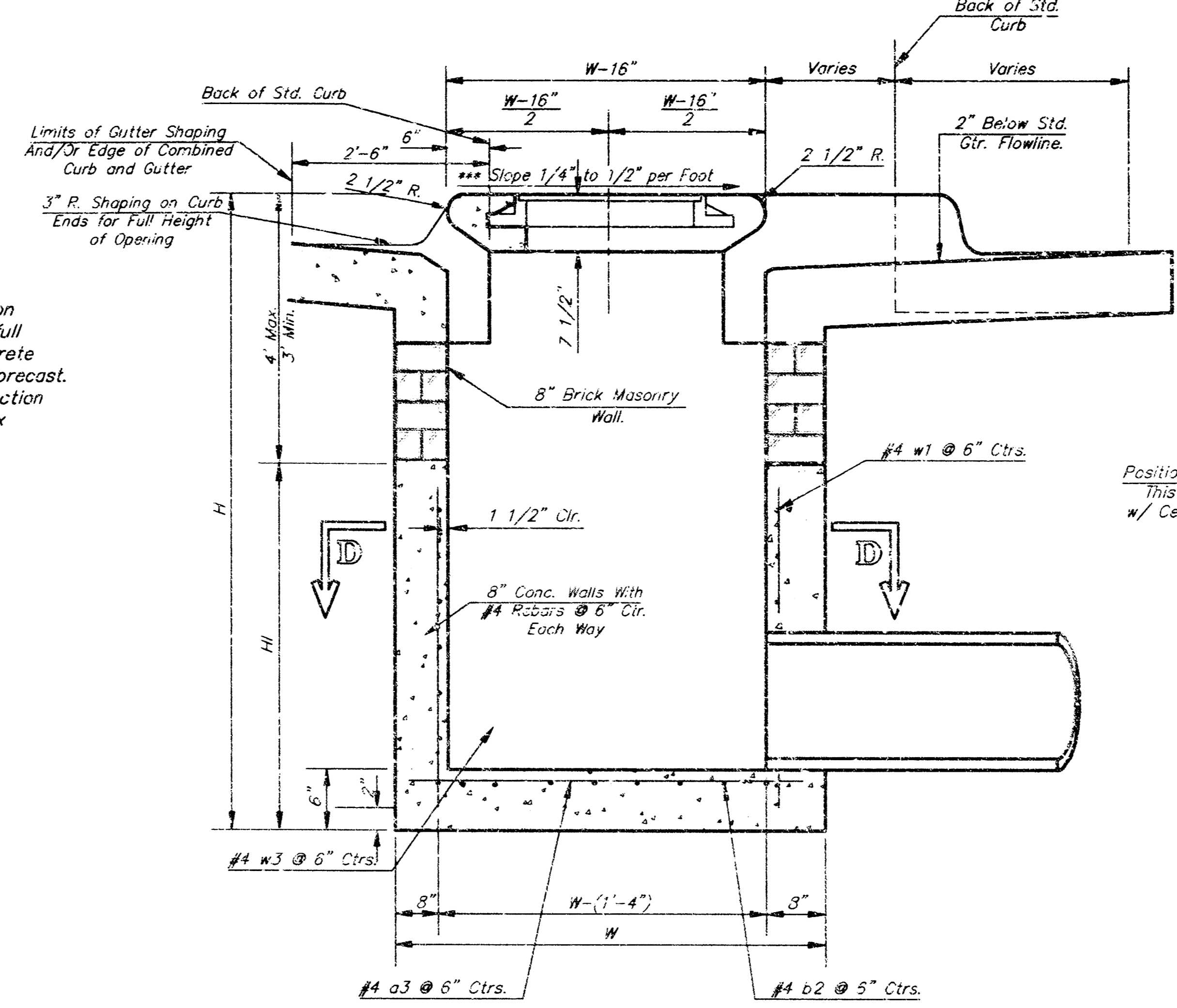
PRECAST SLAB AND FLOOR REINFORCING

| MARK | SIZE | W = 4'-4" | | W = 5'-4" | | W = 6'-4" | | W = 7'-4" | | W = 8'-4" | |
|------|------|-----------|--------|-----------|--------|-----------|--------|-----------|--------|-----------|--------|
| | | NO. | LENGTH | NO. | LENGTH | NO. | LENGTH | NO. | LENGTH | NO. | LENGTH |
| a1 | #4 | 6 | 8'-7" | 8 | 8'-7" | 6 | 10'-7" | 6 | 12'-7" | 6 | 14'-7" |
| a2 | #4 | 4 | 8'-0" | 4 | 8'-0" | 4 | 10'-0" | 4 | 12'-0" | 4 | 14'-0" |
| a3 | #4 | 13 | 4'-1" | 13 | 5'-1" | 13 | 6'-1" | 13 | 7'-1" | 13 | 8'-1" |
| b1 | #4 | 1 | 4'-9" | 1 | 4'-9" | 1 | 4'-9" | 1 | 4'-9" | 1 | 4'-9" |
| a2 | #4 | 23 | 6'-1" | 29 | 6'-1" | 35 | 6'-1" | 41 | 6'-1" | 47 | 6'-1" |
| x1 | #4 | 8 | 3'-10" | 8 | 4'-2" | 8 | 4'-6" | 8 | 4'-10" | 8 | 5'-2" |

WALL REINFORCING

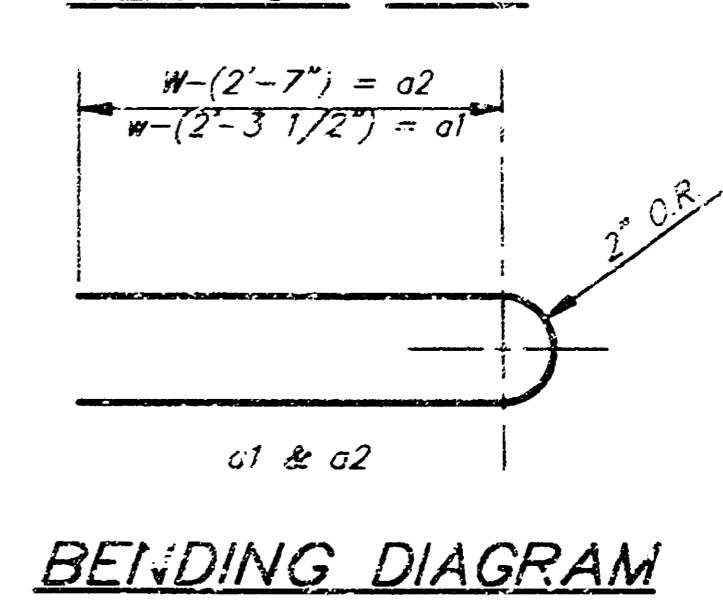
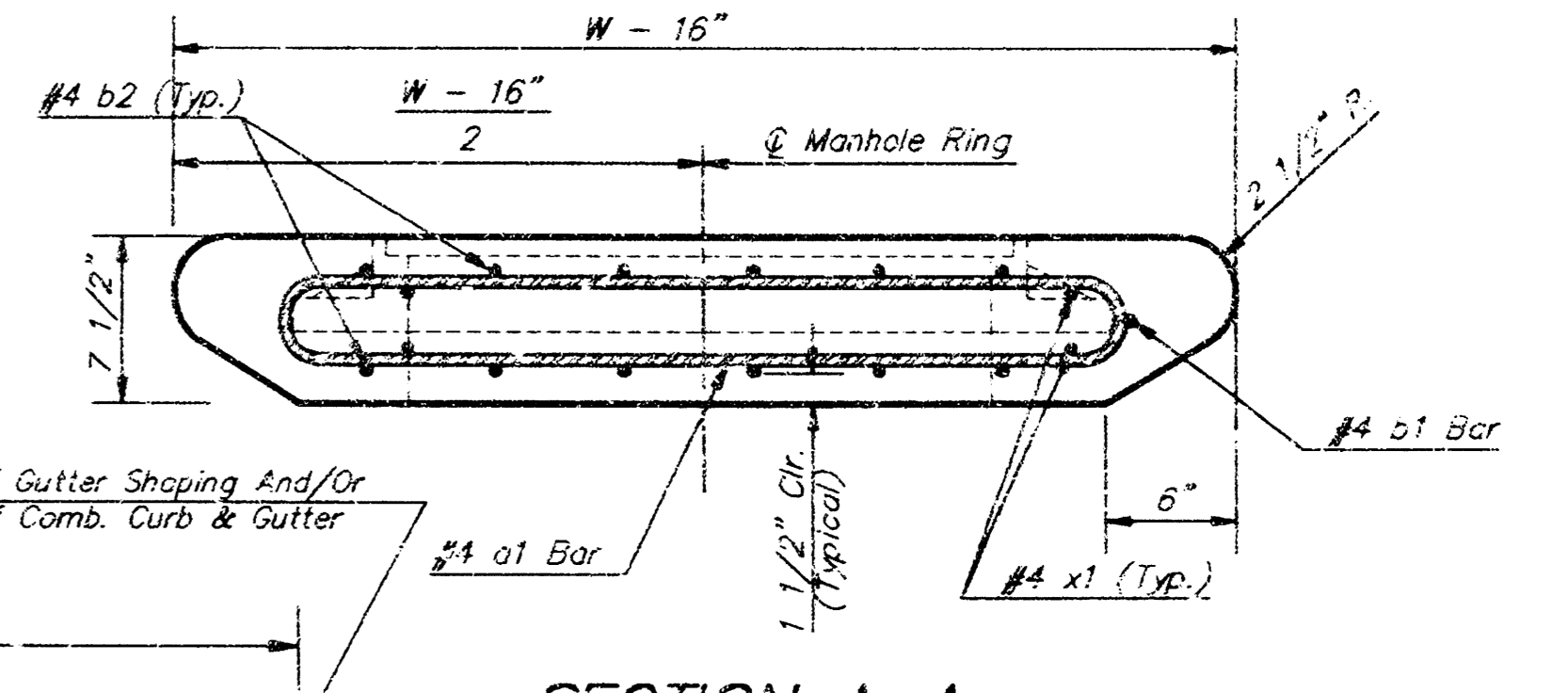
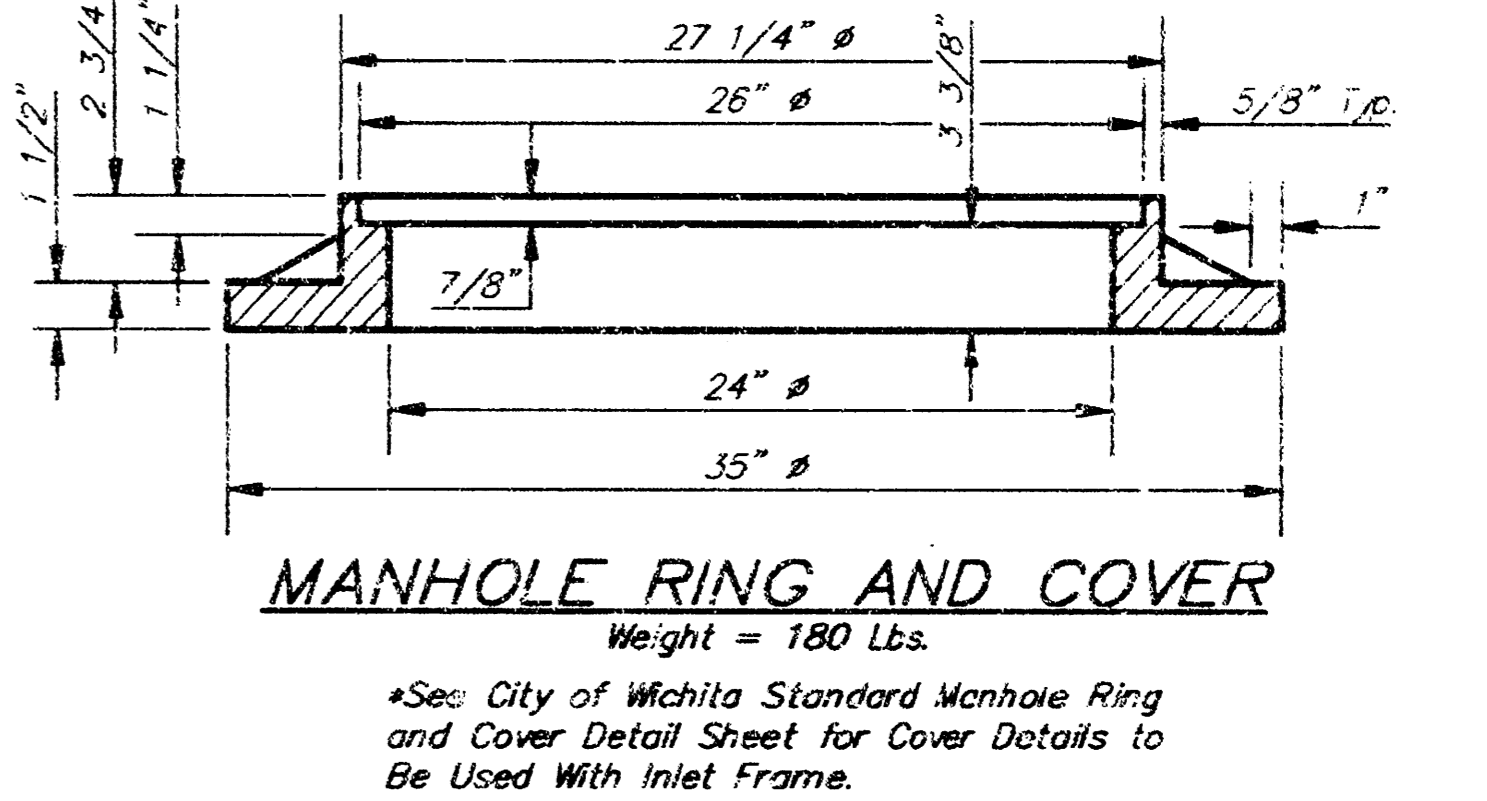
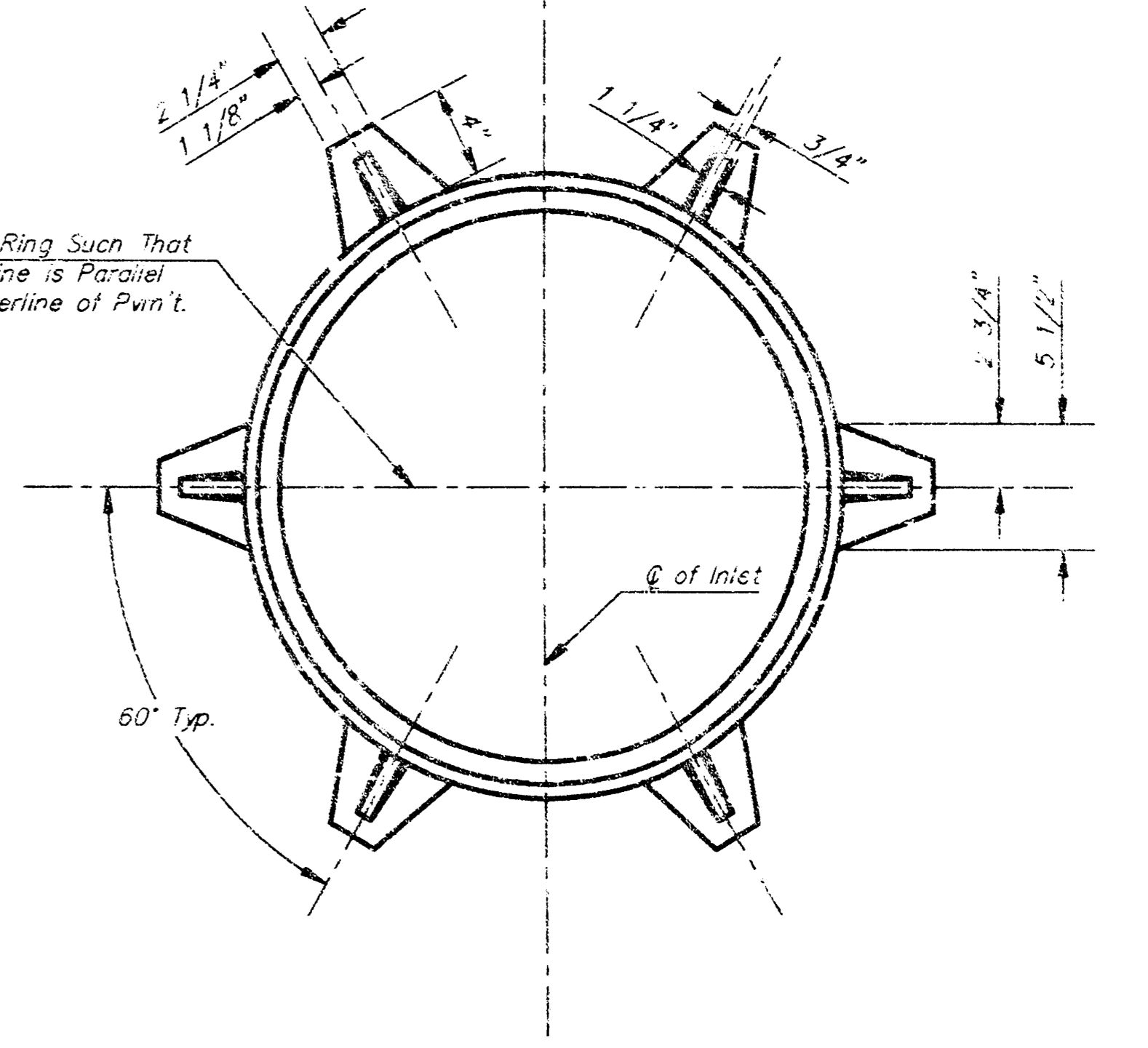
| MARK | SIZE | W = 4'-4" | | W = 5'-4" | | W = 6'-4" | | W = 7'-4" | | W = 8'-4" | |
|------|------|-----------|--------|-----------|--------|-----------|--------|-----------|--------|-----------|--------|
| | | NO. | LENGTH | NO. | LENGTH | NO. | LENGTH | NO. | LENGTH | NO. | LENGTH |
| w1 | #4 | 1 | 6'-1" | 1 | 6'-1" | 1 | 6'-1" | 1 | 6'-1" | 1 | 6'-1" |
| w2 | #4 | 1 | 4'-1" | 1 | 5'-1" | 1 | 6'-1" | 1 | 7'-1" | 1 | 8'-1" |
| w3 | #4 | 32 | 3" | 36 | 3" | 40 | 3" | 44 | 3" | 48 | 3" |

* Field Bend or Cut Reinforcing as Required for Clearance.
 ① 4 (H - 12) (H - 21) Rounded down to nearest 0.5"
 ② H - 3"



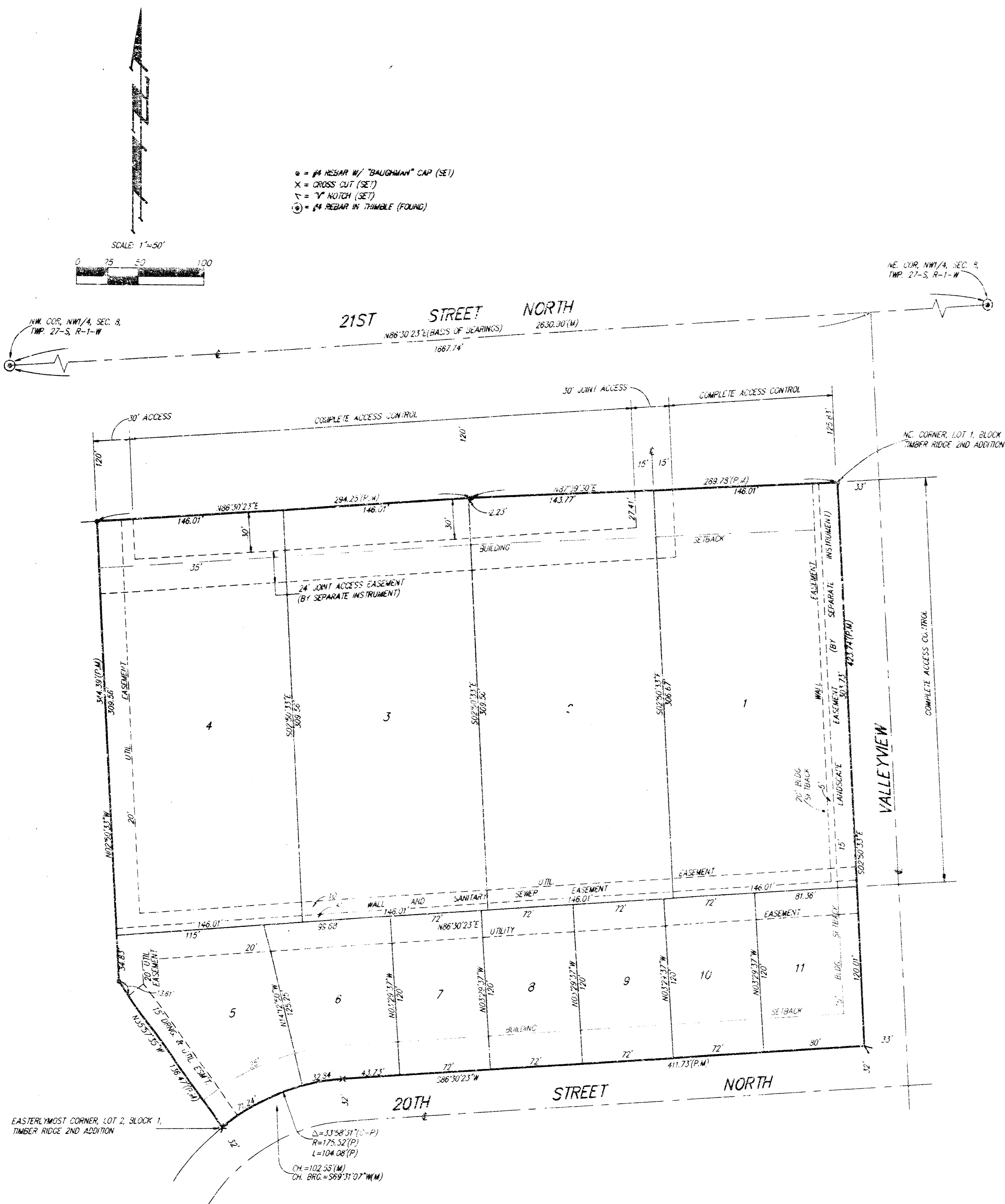
STANDARD CURB INLET PRECAST TOPS

| W | PRE-CAST TOP SIZE | PIPE SIZE | CL. YD CONC. |
|-------|-------------------------|---------------|--------------|
| 4'-4" | 3'-8" x 6'-4" x 7 1/2" | 21" & SMALLER | 0.38± |
| 5'-4" | 4'-8" x 8'-4" x 7 1/2" | 24" & 30" | 0.51± |
| 6'-4" | 5'-8" x 10'-4" x 7 1/2" | 36" & 42" | 0.64± |
| 7'-4" | 6'-8" x 12'-4" x 7 1/2" | 48" & 54" | 0.77± |
| 8'-4" | 7'-8" x 14'-4" x 7 1/2" | 60" & 66" | 0.90± |



CITY OF WICHITA
DOUBLE FACED TYPE 1/1A CURB INLET DETAILS
BAUGHMAN COMPANY P. A.
 ENGINEERING, SURVEYING, & PLANNING
 314-242-7271 • 315 ELLIS • WICHITA, KANSAS 67201
 PROJECT NUMBER: 851 PPS (207331)
 DESIGN: [] STAFF [] APPROVED: [] DATE: 9/98 SCALE: NONE SHEET: 5 OF 8

TIMBER RIDGE 3RD ADDITION WICHITA, SEDGWICK COUNTY, KANSAS



State of Kansas) SS We, Baughman Company, P.A., Surveyors in
Sedgwick County) addressed County and State do hereby certify that we have surveyed
and platted "TIMBER RIDGE 3RD ADDITION", Wichita, Sedgwick County,
Kansas, and that the accompanying plat is a true and correct exhibit
of the property surveyed, described as and being a replat of Lot 1,
Block 1, Timber Ridge 2nd Addition, Wichita, Sedgwick County, Kansas.

All being situated in the NW1/4 of Sec. 8, Twp. 27-S,
R-1-W of the 6th P.M., Sedgwick County, Kansas.

Existing public easements and dedications being vacated by
virtue of K.S.A. 12-512(b).

Baughman Co., P.A.

Michael G. Conroy Surveyor
Michael G. Conroy, L.S. 2978
REGISTERED SURVEYOR
KANSAS
LAND SURVEYING

We, the undersigned, holders of a mortgage
on the above described property do hereby consent to the plat
of "TIMBER RIDGE 3RD ADDITION", Wichita, Sedgwick County, Kansas.

First National Bank of Anthony

Richard Cierny V.P.
Richard Cierny (Title)

State of Kansas) SS The foregoing instrument acknowledged be-
fore me, this 10th day of March, 1996, by *Richard Cierny*
Vice President of First National Bank of Anthony, on behalf of the bank.

Dawn M. G... Notary Public
Dawn M. G... Notary Public

My App't. Exp. 12-12-99

Know all men by these presents that we,
the undersigned, have caused the land in the surveyors certificate to
be platted into lots to be known as "TIMBER RIDGE 3RD ADDITION",
Wichita, Sedgwick County, Kansas. The utility easements are hereby
granted as indicated for the construction and maintenance of all public
utilities. The wall easement is hereby granted as indicated for the
construction and maintenance of a private wall and utility service lines
are allowed to cross this easement. The wall and sanitary sewer
easement is hereby granted as indicated for the construction and
maintenance of a private wall and utility service lines and sanitary
sewer service lines are allowed to cross this easement. The drainage and
utility easement is hereby granted as indicated for drainage purposes
and for the construction and maintenance of all public utilities. All
adjoining rights of access shall be as depicted on the face of the plat
and are hereby granted to the City of Wichita, Kansas. The permitted
entrance locations shall be as determined by the City Engineer of the
City of Wichita, Kansas.

B. & E. Investments, Inc.
Matthias F. Eck President
Matthias F. Eck

T. K. Development, LLC
J. Kendall Dillehay Member and Manager
J. Kendall Dillehay

Terry L. Duncan Member and Manager
Terry L. Duncan

State of Kansas) SS The foregoing instrument acknowledged be-
fore me, this 8th day of March, 1996, by Matthias F. Eck,
President of B. & E. Investments, Inc., on behalf of the corporation.

Theresa Murphy Notary Public
Theresa Murphy
My App't. Exp. 8-16-99
THERESA MURPHY
Notary Public - State of Kansas
My Appl. Expires

State of Kansas) SS The foregoing instrument acknowledged be-
fore me, this 8th day of March, 1996, by J. Kendall
Dillehay, Member and Manager of T. K. Development, LLC, on behalf of
the company.

Theresa Murphy Notary Public
Theresa Murphy
My App't. Exp. 8-16-99
THERESA MURPHY
Notary Public - State of Kansas
My Appl. Expires

This plat approved and all dedications
shown hereon accepted by the City Council of the City of Wichita,
Kansas, this 4th day of APRIL, 1996.

Bob Knight Mayor
Bob Knight
Pat Burnett Deputy City Clerk
Pat Burnett

Entered on transfer record this 2nd day
of July, 1996

Susan E. Crockett-Spoon County Clerk
Susan E. Crockett-Spoon

State of Kansas) SS This is to certify that this plat has been
filed for record in the office of the Register of Deeds, this 23rd day
of July, 1996, at 10:00 o'clock A.M. and is duly
recorded.

Pat Kettler Register of Deeds
Pat Kettler
Phyllis Hernandez Deputy
Phyllis Hernandez

State of Kansas) SS The foregoing instrument acknowledged be-
fore me, this 8th day of March, 1996, by Terry L.
Duncan, Member and Manager of T. K. Development, LLC, on behalf of
the company.

Theresa Murphy Notary Public
Theresa Murphy
My App't. Exp. 8-16-99
THERESA MURPHY
Notary Public - State of Kansas
My Appl. Expires