

CITY OF WICHITA, KANSAS

MICHAEL E. LINDEBAK, P.E., CITY ENGINEER

STORM WATER SEWER EXTENSION

FOR

BOOKED

WICHITA TRANSIT

CITY OF WICHITA PRIVATE PROJECT NO. 857PPS (607861)

As-builts 02/24/99
 Inspected by: Savoy, Ruggles & Bohm, P.A.
 (Chris Bohm)
 (Mike Stump)

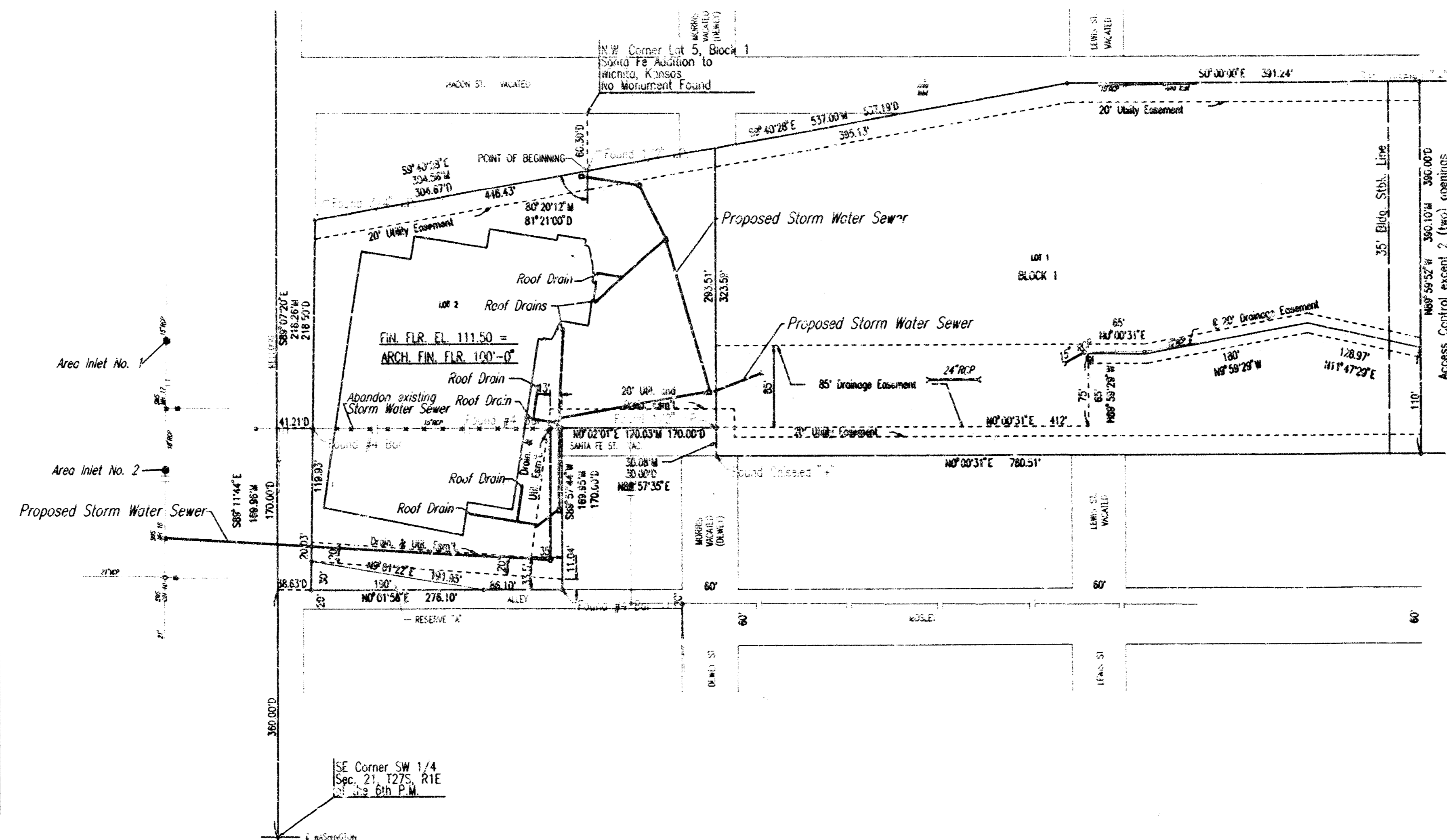
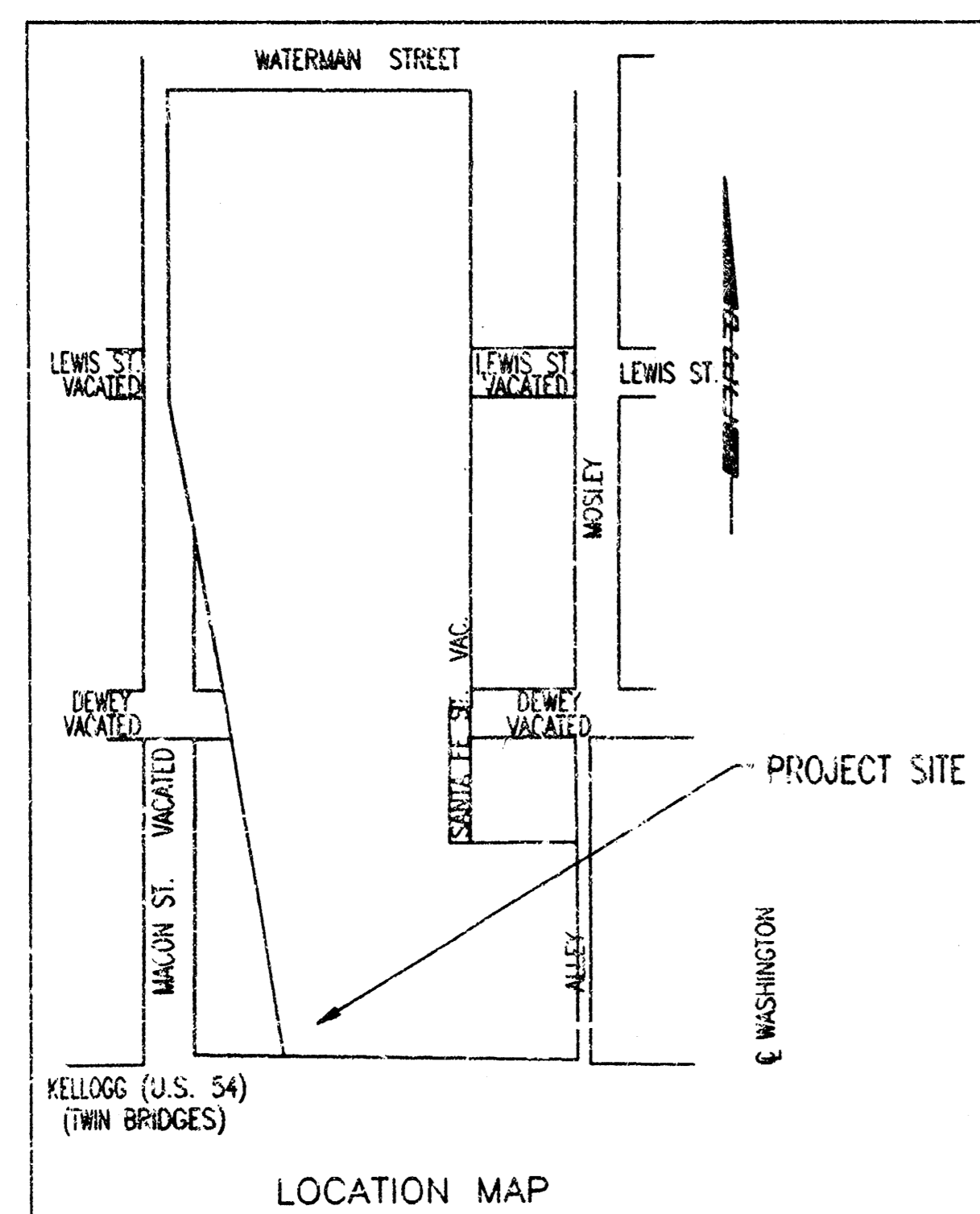
GENERAL NOTES

1. ALL CONSTRUCTION AND MATERIALS TO COMPLY WITH CITY OF WICHITA SPECIFICATIONS AND STANDARDS.
2. ALL ELEVATIONS SHOWN ARE BASED ON CITY OF WICHITA DATUM.
3. AT LEAST 72 HOURS PRIOR TO BEGINNING EXCAVATION (EXCLUDING WEEKENDS AND HOLIDAYS), THE CONTRACTOR SHALL CONTACT THE KANSAS ONE-CALL SYSTEM, A UTILITY LOCATION SERVICE, AT (316) 887-2470 TO REQUEST THE LOCAL UTILITY COMPANIES TO MARK ANY EXISTING LINES WITHIN THE PROJECT AREA.
4. UNDERGROUND UTILITY SERVICE LINES AND OVERHEAD UTILITY POLE LINES ARE TO BE ADJUSTED AS NECESSARY BY OTHERS PRIOR TO CONSTRUCTION UNLESS THE PLANS SPECIFICALLY CALL FOR THEIR RELOCATION BY THE CONTRACTOR OR UNLESS THE PLANS SPECIFICALLY INDICATE A UTILITY TO BE ADJUSTED BY ITS OWNER DURING CONSTRUCTION. EXISTING UTILITIES AND THEIR LOCATIONS AS SHOWN ON THE PLANS REPRESENT THE BEST INFORMATION AVAILABLE FOR THE DESIGN. THE CONTRACTOR WILL BE REQUIRED TO WORK AROUND EXISTING UTILITIES WITHIN THE RIGHT-OF-WAY WHICH DO NOT CONFLICT WITH PROPOSED CONSTRUCTION.
5. THE CONTRACTOR SHALL BE RESPONSIBLE FOR PRESERVING PROPERTY RIGHTS. THE CONTRACTOR SHALL BE REQUIRED TO RE-ESTABLISH ANY PROPERTY RIGHTS WHICH ARE DAMAGED OR DESTROYED BY HIS CONSTRUCTION OPERATIONS. SUCH RIGHTS SHALL BE RE-ESTABLISHED BY A LICENSED LAND SURVEYOR IN ACCORDANCE WITH STATE LAWS.
6. CONTRACTOR SHALL PROVIDE POSITIVE URNAGE AWAY FROM ALL MANHOLE COVERS.
7. SIGNATURES SHALL BE CONSTRUCTED IN ACCORDANCE WITH THE STANDARD SPECIFICATIONS AND THE STANDARD DETAIL DRAWINGS.
8. ALL UNIMPAVED AREAS DISTURBED BY CONSTRUCTION OF THE PROPOSED IMPROVEMENTS SHALL BE RESTORED TO THE SAME CONDITION AS EXISTING. RESTORATION OF DISTURBED AREAS SHALL INCLUDE, BUT NOT BE LIMITED TO, TOP SOIL, PREVIOUSLY STORED MATERIAL, AND/OR RESEEDING. ALL SEEDING/RESOEDING WORK SHALL BE IN ACCORDANCE WITH THE CITY OF WICHITA STANDARD SPECIFICATIONS AND THE CITY OF WICHITA ADMINISTRATIVE REGULATION NO. 8028 WHICH GOVERNS CLEANUP AND RESTORATION OR REPLACEMENT FOLLOWING CONSTRUCTION.
9. RUBBLE FROM THE REMOVAL OF UNDESIRABLE STRUCTURES INCLUDING ANY TREES REMOVED, TREE TRUNKS, AND EXCESS EXCAVATION WHICH IS TO BE WASTED SHALL BE REMOVED FROM SITES PROVIDED BY THE CONTRACTOR. THESE SITES SHALL ALSO BE APPROVED BY THE ENGINEER AS TO SUITABILITY, APPEARANCE, AND SITE LOCATION. LOCATIONS SHOWN ON THE DRAWING OF THE ENGINEER WILL LEAVE AN UNSUITABLE APPEARANCE WILL NOT BE APPROVED. ALL DISPOSAL SITES MUST BE APPROVED BY THE KANSAS DEPARTMENT OF HEALTH AND ENVIRONMENT. MATERIAL EITHER STOCKPILED OR DEPOSED IN A FLOOD PLAIN WILL REQUIRE A KANSAS STATE BOARD OF AGRICULTURE PERMIT. ANY MATERIAL DUMPED IN WATERS OF THE UNITED STATES OR WETLANDS IS SUBJECT TO U.S. DEPARTMENT OF COMMERCE REGULATING REGULATIONS. ANY MATERIAL BURIED OR STOCKPILED REQUIRING APPROVED CONSTRUCTION LIMITS MAY REQUIRE ARCHAEOLOGICAL INVESTIGATIONS UNLESS BURIED IN A PREVIOUSLY APPROVED DISPOSAL LOCATION.
10. THE CONTRACTOR SHALL AVOID REMOVAL OR TRIMMING OF ANY TREES OR SHRUBS WHERE POSSIBLE. WHERE THE CONTRACTOR BELIEVES THE REMOVAL OR TRIMMING IS UNAVOIDABLE, HE SHALL COORDINATE SUCH WORK WITH THE ENGINEER.
11. THE CONTRACTOR SHALL PREVENT ANY CONSTRUCTION DEBRIS FROM ENTERING THE EXISTING SANITARY SEWER DURING CONSTRUCTION.
12. THE CONTRACTOR SHALL GIVE ALL PROPERTY OWNERS AND/OR TENANTS OF DEVELOPED PROPERTY ADEQUATE NOTICE OF THE CONSTRUCTION OF THIS PROJECT A MINIMUM OF TEN (10) DAYS ADVANCE NOTICE PRIOR TO START OF CONSTRUCTION.
13. CONTRACTOR IS REQUIRED TO MAINTAIN CONTINUOUS FLOW OF SEWAGE IN EXISTING MAINS AT ALL TIMES.
14. INTERURBAN TRAFFIC GENERATED OUTSIDE THE PROJECT AREA AND LOCAL BUSINESS OR RESIDENTIAL TRAFFIC GENERATED WITHIN THE PROJECT AREA ARE TO BE CARRIED THROUGH CONSTRUCTION AS FURTHER PROMULGATED BY PROJECT SPECIAL PROVISIONS.
15. PRIOR TO BEGINNING CONSTRUCTION, THE CONTRACTOR SHALL EXCAVATE EXISTING UTILITIES THAT ARE TO BE CONNECTED TO AT THE LOCATIONS SHOWN TO VERIFY PIPE SIZE, SIZE, GRADE, AND HORIZONTAL AND VERTICAL LOCATION. THE CONTRACTOR SHALL REPORT HIS FINDINGS TO THE ENGINEER THAT ANY NECESSARY PLAN MODIFICATIONS MAY BE MADE.
16. ALL UTILITIES SHALL BE INSPECTED PRIOR TO BACKFILLING.
17. THE CONTRACTOR SHALL REMOVE AND DISPOSE OF ALL TRASH AND DEBRIS ON SITE AT TIME OF CONSTRUCTION.

INDEX OF SHEETS

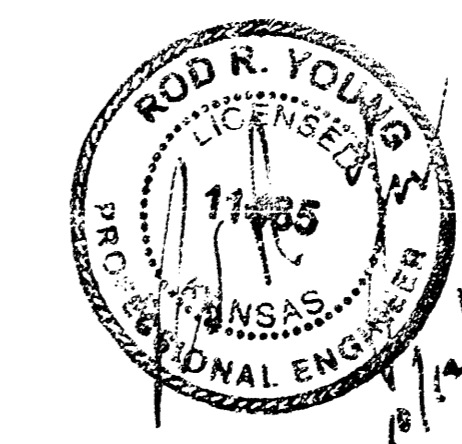
1. TITLE
2. SWS PLAN

WICHITA TRANSIT ADDITION
 TO WICHITA, SEDGWICK COUNTY, KANSAS



BENCHMARKS	HORIZONTAL CONTROL
B.M. #1 - CHISELED "X" NORTH R/W STORM WATER SEWER MANHOLE NO. 2 12" SOUTH OF SW CORNER UNITED WAREHOUSE BUILDING. ELEV.=109.03 CITY DATUM	CP #1 - #6 PIPE N = 8,779.06; E = 10,141.44
B.M. #2 - CHISELED "X" TOP OF CURB SOUTH END CURB & OUTER ISLAND, CENTER OF PARKING LOT. ELEV.=109.97 CITY DATUM	CP #2 - #4 BAR N = 8,775.72; E = 10,359.68
	CP #3 - #4 BAR N = 9,049.43; E = 10,529.78
	CP #4 - #4 PIPE N = 9,219.35; E = 10,359.93

SEPTEMBER 1998
PLANS PREPARED BY
PROFESSIONAL ENGINEERING CONSULTANTS, P.A.
ENGINEERS
WICHITA, KANSAS



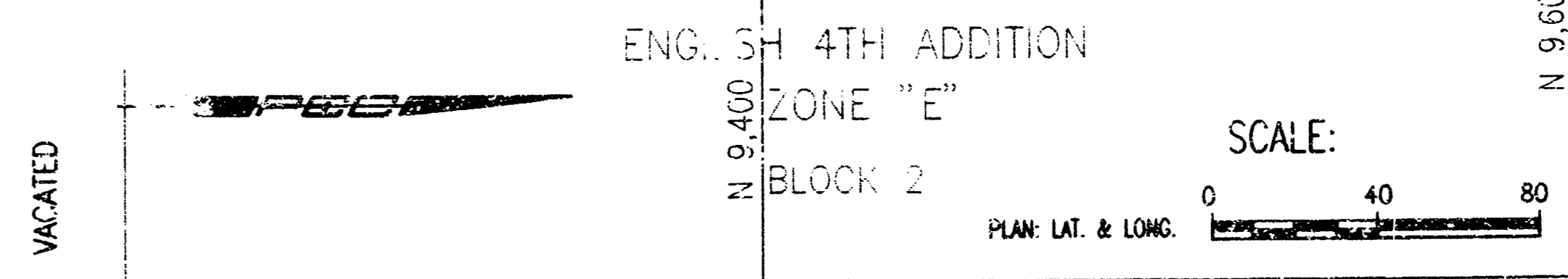
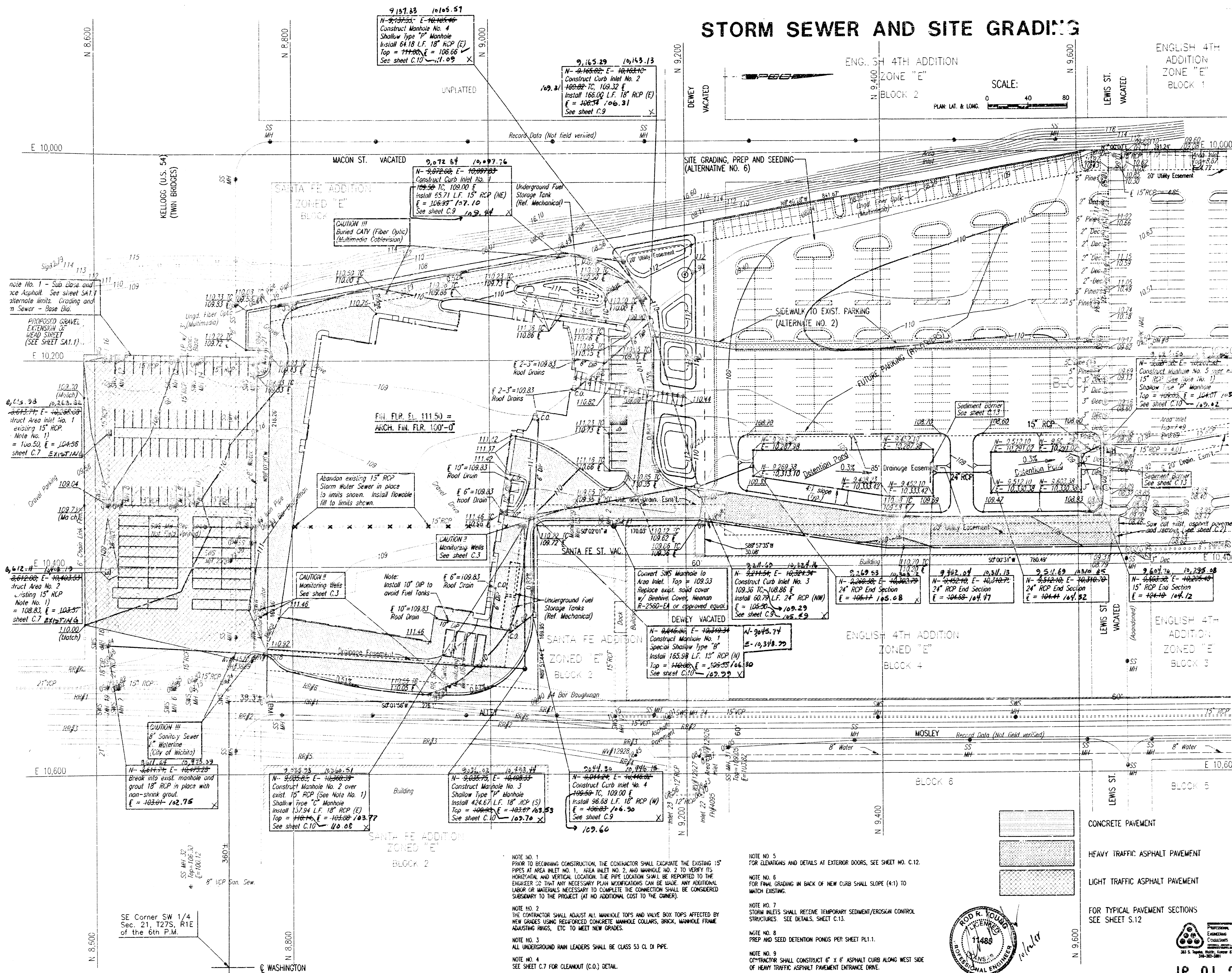
APPROVED AS NOTED
 BY CITY ENGINEER OF WICHITA

SANITARY SEWERS _____
 STORM SEWERS VRH 10/2/98
 DRIVEWAY APPROACHES _____
 WATER MAINS _____
 PAVING _____

INSPECTION AND TESTING FOR THIS PROJECT IS TO BE PROVIDED BY A LICENSED CONSULTING ENGINEERING FIRM CONTRACTED BY THE OWNER/DEVELOPER. SAID INSPECTION TO BE IN ACCORDANCE WITH THE CITY OF WICHITA STANDARD CONSTRUCTION ENGINEERING PRACTICES AND CERTIFIED BY A LICENSED PROFESSIONAL ENGINEER. NO WORK SHALL BE PERFORMED IN DEDICATED EASEMENTS OR THE PUBLIC RIGHT-OF-WAY BY THE CONTRACTOR UNTIL SUCH INSPECTION IS ARRANGED FOR AND REQUIRED BONDS HAVE BEEN SUBMITTED TO AND APPROVED BY THE CITY. NOR SHALL ANY WORK BE COMMENCED IN DEDICATED EASEMENTS OR PUBLIC RIGHT-OF-WAY WITHOUT WRITTEN AUTHORIZATION BY THE CITY ENGINEER. IMPROVEMENTS PERFORMED UNDER THIS PROJECT SHALL NOT BE ACCEPTED BY THE CITY UNTIL ALL APPLICABLE DOCUMENTATION HAS BEEN SUBMITTED TO THE CITY ENGINEER. THIS MAY INCLUDE: AS-BUILT DRAWINGS, INSPECTION LOGS, TEST DOCUMENTATION, TV TAPES, AND A CERTIFICATE OF COMPLETION. THE ABOVE SHALL BE PERFORMED BY THE CONSULTING FIRM CONTRACTED TO INSPECT THIS PROJECT.

BOOKED
 8-30-99
 MCG
 D-432

STORM SEWER AND SITE GRADING



ENGLISH 4TH ADDITION
ZONE "E"
BLOCK 1

note No. 1 - Sub base and
ice Asphalt. See sheet S.A.1.
alternate limits. Grading and
n. Sewer - Base Bld.

PROPOSED GRAVEL
EXTENSION OF
4540 STREET
(SEE SHEET S.A.1.)

note No. 1 - Sub base and
ice Asphalt. See sheet S.A.1.
alternate limits. Grading and
n. Sewer - Base Bld.

PROPOSED GRAVEL
EXTENSION OF
4540 STREET
(SEE SHEET S.A.1.)

SE Corner SW 1/4
Sec. 21, T27S, R1E
of the 6th P.M.

NOTE NO. 1
FROM TO BEGINNING CONSTRUCTION, THE CONTRACTOR SHALL EXCAVATE THE EXISTING 15"
PIPES AT AREA INLET NO. 1, AREA INLET NO. 2, AND MANHOLE NO. 2 TO VERIFY ITS
HORIZONTAL AND VERTICAL LOCATION. THE PIPE LOCATION SHALL BE REPORTED TO THE
ENGINEER SO THAT ANY NECESSARY PLAN MODIFICATIONS CAN BE MADE. ANY ADDITIONAL
LABOR OR MATERIALS NECESSARY TO COMPLETE THE CONNECTION SHALL BE CONSIDERED
SUBSIDIARY TO THE PROJECT (AT NO ADDITIONAL COST TO THE OWNER).

NOTE NO. 2
THE CONTRACTOR SHALL ADJUST ALL MANHOLE TOPS AND VALVE BOX TOPS AFFECTED BY
NEW GRADES USING REINFORCED CONCRETE MANHOLE COLLARS, BRICK, MANHOLE FRAME
ADJUSTING RINGS, ETC TO MEET NEW GRADES.

NOTE NO. 3
ALL UNDERGROUND RAIN LEADERS SHALL BE CLASS 53 CL DI PIPE.

NOTE NO. 4
SEE SHEET C.7 FOR CLEANOUT (C.O.) DETAIL.

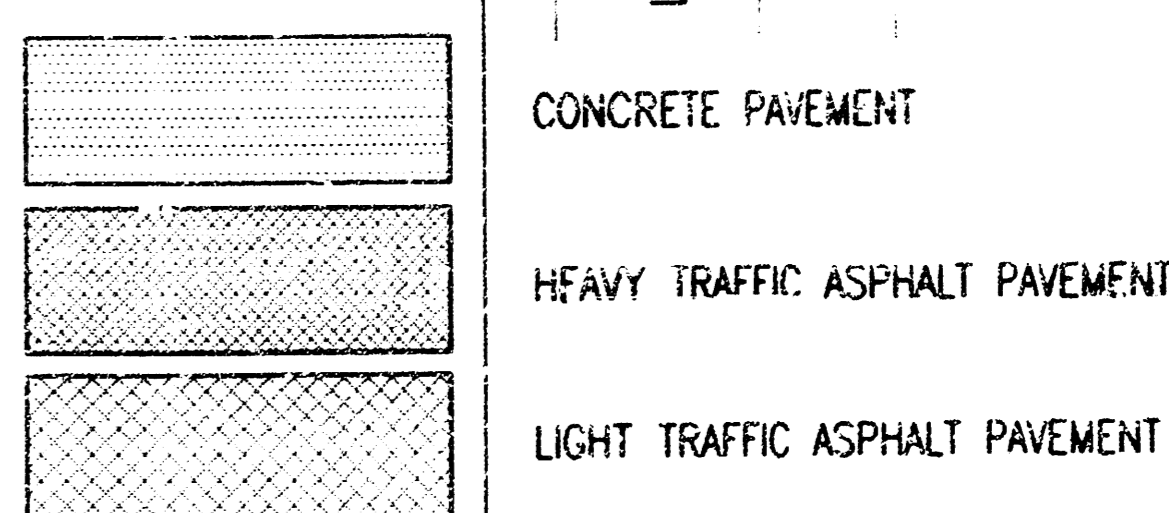
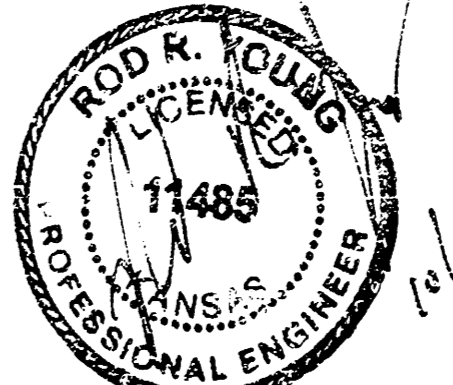
NOTE NO. 5
FOR CLEANSING AND DETAILS AT EXTERIOR DOORS, SEE SHEET NO. C.12.

NOTE NO. 6
FOR FINAL GRADING IN BACK OF NEW CURB SHALL SLOPE (4:1) TO
MATCH EXISTING.

NOTE NO. 7
STORM INLETS SHALL RECEIVE TEMPORARY SEDIMENT/EROSION CONTROL
STRUCTURES. SEE DETAILS SHEET C.13.

NOTE NO. 8
PREP AND SEED DETENTION PONDS PER SHEET PL.1.1.

NOTE NO. 9
CONTRACTOR SHALL CONSTRUCT 6' x 6' ASPHALT CURB ALONG WEST SIDE
OF HEAVY TRAFFIC ASPHALT PAVEMENT ENTRANCE DRIVE.



FOR TYPICAL PAVEMENT SECTIONS
SEE SHEET S.12

submit design structure plan
105 W. Washington
Wichita, Kansas 67202
316-262-4700
fax 316-262-0002

copyright
Wilson Darnell Mann PA

Wichita Transit
Storage + Administration + Maintenance Facility
As-built
Inspected by:
Sandy, Ruylos & Bobm
(Chris Behm)
777 EAST WATERMAN
WICHITA, KANSAS
02/24/99

PRINTS ISSUED
June 15, 1998
For Size

WCH No. db. Date
93018 ch. RAY

STORM SEWER
AND
SITE GRADING
C.4
2 of 2

16 01 93 14