

LOCATION MAP

PRIVATE STORM WATER PLANS  
**LEE AEROSPACE**  
 LOTS 20 & 21, BLOCK 1  
 COMOTARA INDUSTRIAL PARK FIFTH ADDITION  
 PRIVATE PROJECT NO. 862PPS

CITY OF WICHITA, KANSAS  
 MICHAEL E. LINDEBAK, CITY ENGINEER

INDEX CODE 607861

APPROVED AS NOTED  
 BY CITY ENGINEER OF WICHITA

SANITARY SEWERS \_\_\_\_\_  
 STORM SEWERS *1/24 11/9/98*  
 DRIVEWAY APPROACHED \_\_\_\_\_  
 WATER MAINS \_\_\_\_\_  
 PAVING \_\_\_\_\_



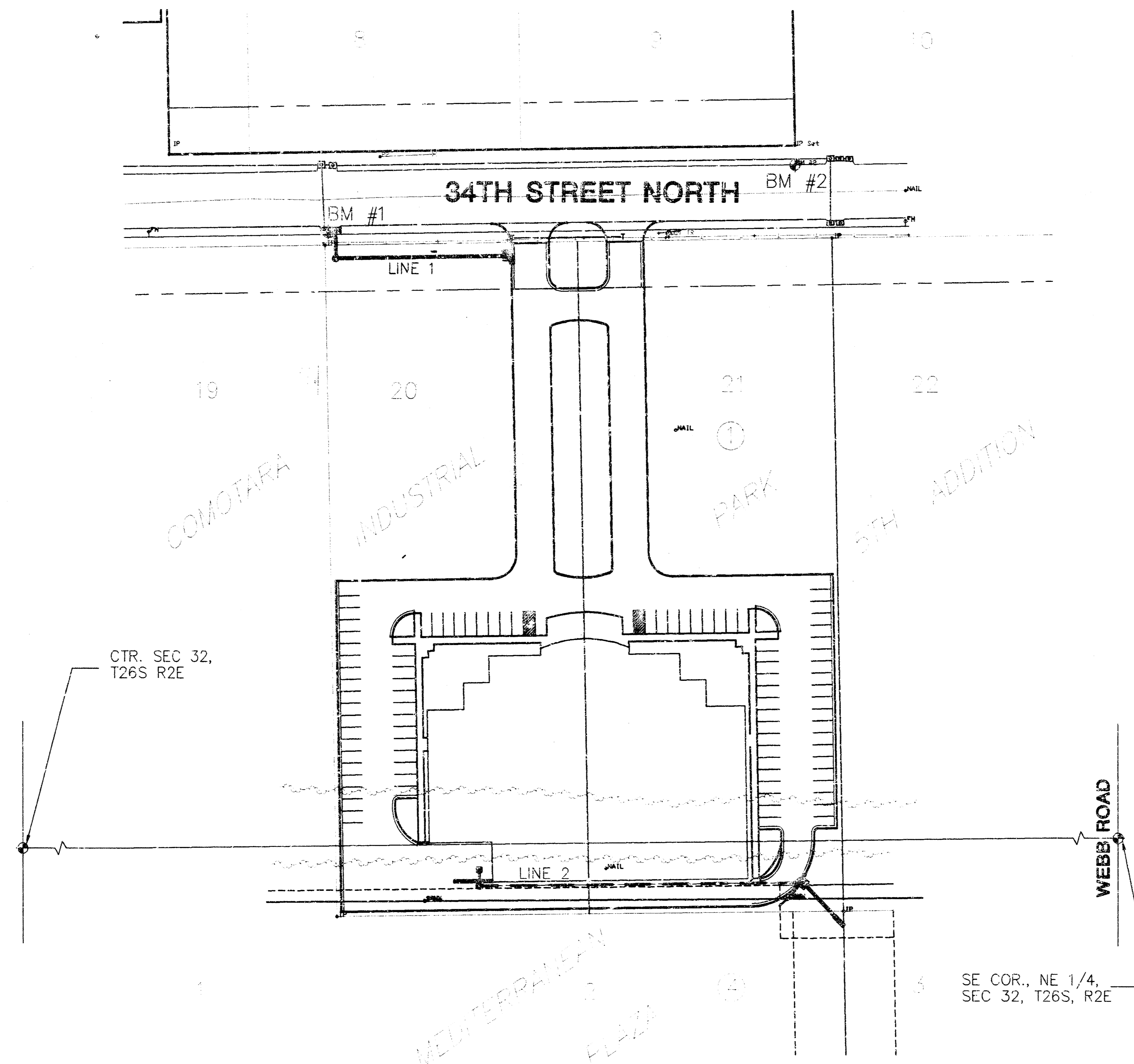
SCALE: 1"=60'  
 0 60 120

NOTE TO CONTRACTOR

INSPECTION AND TESTING FOR THIS PROJECT IS TO BE PROVIDED BY A LICENSED CONSULTING ENGINEERING FIRM UNDER CONTRACT WITH THE OWNER/DEVELOPER. SAID INSPECTION TO BE IN ACCORDANCE WITH THE CITY OF WICHITA STANDARD CONSTRUCTION ENGINEERING PRACTICES AND CERTIFIED BY A LICENSED PROFESSIONAL ENGINEER. NO WORK SHALL BE PERFORMED IN DEDICATED EASEMENTS OR THE PUBLIC RIGHT-OF-WAY BY THE CONTRACTOR WITHOUT SUCH INSPECTION, NOR SHALL ANY WORK BE COMMENCED IN DEDICATED EASEMENTS OR PUBLIC RIGHT-OF-WAY WITHOUT WRITTEN AUTHORIZATION BY THE CITY ENGINEER.

GENERAL NOTES

- THE TOPS OF INLETS AND MANHOLES AS NOTED ON THE PLANS MAY VARY SO AS TO MEET PROPOSED TOP OF CURB ELEVATIONS OR PAVEMENT ELEVATIONS. THE FIELD ENGINEER SHALL LOCATE INLETS AND MANHOLES WITH REFERENCE TO PROPOSED PAVING PLANS OF THE PERTINENT PROJECTS.
- ALL CONCRETE SHALL BE STANDARD PAVING MIX UNLESS OTHERWISE NOTED.
- THE CONTRACTOR SHALL BE RESPONSIBLE FOR PRESERVING PROPERTY IRONS. THE CONTRACTOR SHALL BE REQUIRED TO RE-ESTABLISH ANY PROPERTY IRONS WHICH ARE DAMAGED OR DESTROYED BY HIS CONSTRUCTION OPERATIONS. SUCH IRONS SHALL BE RE-ESTABLISHED BY A LICENSED LAND SURVEYOR IN ACCORDANCE WITH STATE LAWS.
- TREES TO BE REMOVED ARE MARKED  $\otimes$ . ALL TREES WHICH IN THE OPINION OF THE FIELD ENGINEER CAN BE SAVED, SHALL BE SAVED.
- CONTRACTOR SHALL NOTIFY UTILITY COMPANIES OF CONSTRUCTION SCHEDULING.
- EXISTING UTILITIES AND THEIR LOCATIONS, AS SHOWN ON THE PLANS REPRESENT THE BEST INFORMATION OBTAINABLE FOR DESIGN. LOCATION INFORMATION HAS BEEN OBTAINED FROM THE VARIOUS COMPANIES AND IS EITHER FROM COMPANY UTILITY DRAWINGS OR COMPANY PROVIDED FIELD LOCATIONS. THE PLAN LOCATIONS SHOWN ARE NOT GUARANTEED. ADDITIONAL EXISTING UTILITIES MAY ALSO BE ENCOUNTERED.
- CONTRACTOR WILL BE REQUIRED TO PROVIDE A MINIMUM ADVANCE NOTICE OF FORTY-EIGHT (48) HOURS TO UTILITY COMPANIES TO STARTING ANY EXCAVATION AS FOLLOWS:  
 KANSAS ONE-CALL 687-2470  
 OR 687-2470 (LOCAL WICHITA)
- THE CONTRACTOR MUST NOTIFY THE FOLLOWING IN CASE OF EMERGENCY:  
 CABLEVISION 263-7061  
 KG&E (GAS & ELECTRIC) 383-8600  
 SOUTHWESTERN BELL TELEPHONE COMPANY 1-800-734-7590  
 CITY OF WICHITA WATER & SEWER MAINT. 259-4908  
 ARKLA GAS COMPANY 946-0096
- RUBBLE FROM THE REMOVAL OF MISCELLANEOUS STRUCTURES AND EXCESS EXCAVATION WHICH IS TO BE WASTED SHALL BE DISPOSED OF ON SITES TO BE PROVIDED BY THE CONTRACTOR. THESE SITES SHALL BE APPROVED BY THE ENGINEER AS TO SUITABILITY, APPEARANCE AND SITE LOCATION. LOCATIONS THAT IN THE OPINION OF THE ENGINEER WILL LEAVE AN UNSIGHTLY APPEARANCE WILL NOT BE APPROVED. ALL DISPOSAL SITES MUST BE APPROVED BY THE KANSAS DEPARTMENT OF HEALTH AND ENVIRONMENT. MATERIAL EITHER STOCKPILED OR DISPOSED OF IN A FLOOD PLAIN WOULD REQUIRE A KANSAS STATE BOARD OF AGRICULTURE PERMIT. ANY MATERIAL DUMPED IN WATERS OF THE UNITED STATES OR WETLANDS IS SUBJECT TO U.S. CORPS OF ENGINEERS PERMITTING REGULATIONS. ANY MATERIAL BURIED OR STOCKPILED BEYOND APPROVED CONSTRUCTION LIMITS WOULD REQUIRE ADDITIONAL ARCHAEOLOGICAL INVESTIGATIONS UNLESS BURIED IN A PREVIOUSLY APPROVED BORROW LOCATION.
- CONTRACTOR SHALL RESEED AND MULCH ALL DISTURBED AREAS. COST SHALL BE CONSIDERED SUBSIDIARY TO SITE RESTORATION.



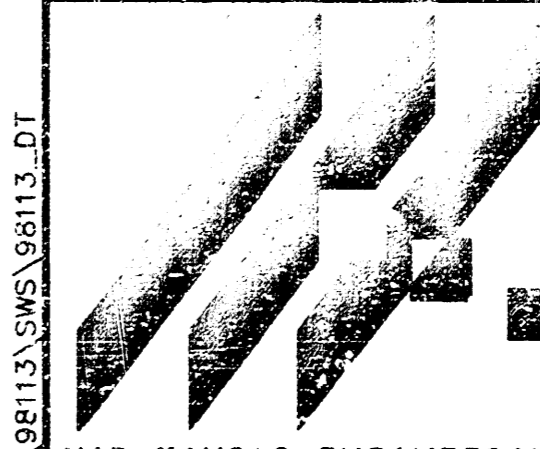
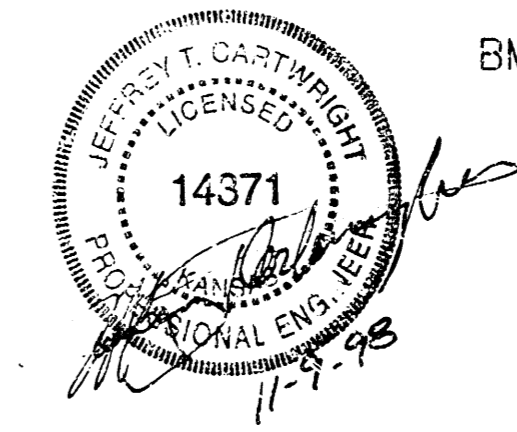
INDEX TO DRAWINGS

1	TITLE SHEET
2	LINES 1 & 2
3-5	INLET & MANHOLE DETAILS
6-7	FINAL PLATS

*Booked  
 E-3  
 8/18/03  
 RDL*

BENCHMARKS

- BM #1 "C" CUT ON SE COR. W CURB INLET S. SIDE OF 34TH ST. NORTH, 10' N OF NW COR., LOT 20 BLK. 1, COMOTARA INDUSTRIAL PARK 5TH ADD. ELEV. = 232.80
- BM #2 "C" CUT ON TC @ SE CORNER LOT 9, BLK. 1, @ 34TH ST. NORTH, WEST OF WEBB ROAD, COMOTARA INDUSTRIAL PARK 5TH ADD. ELEV. = 237.625

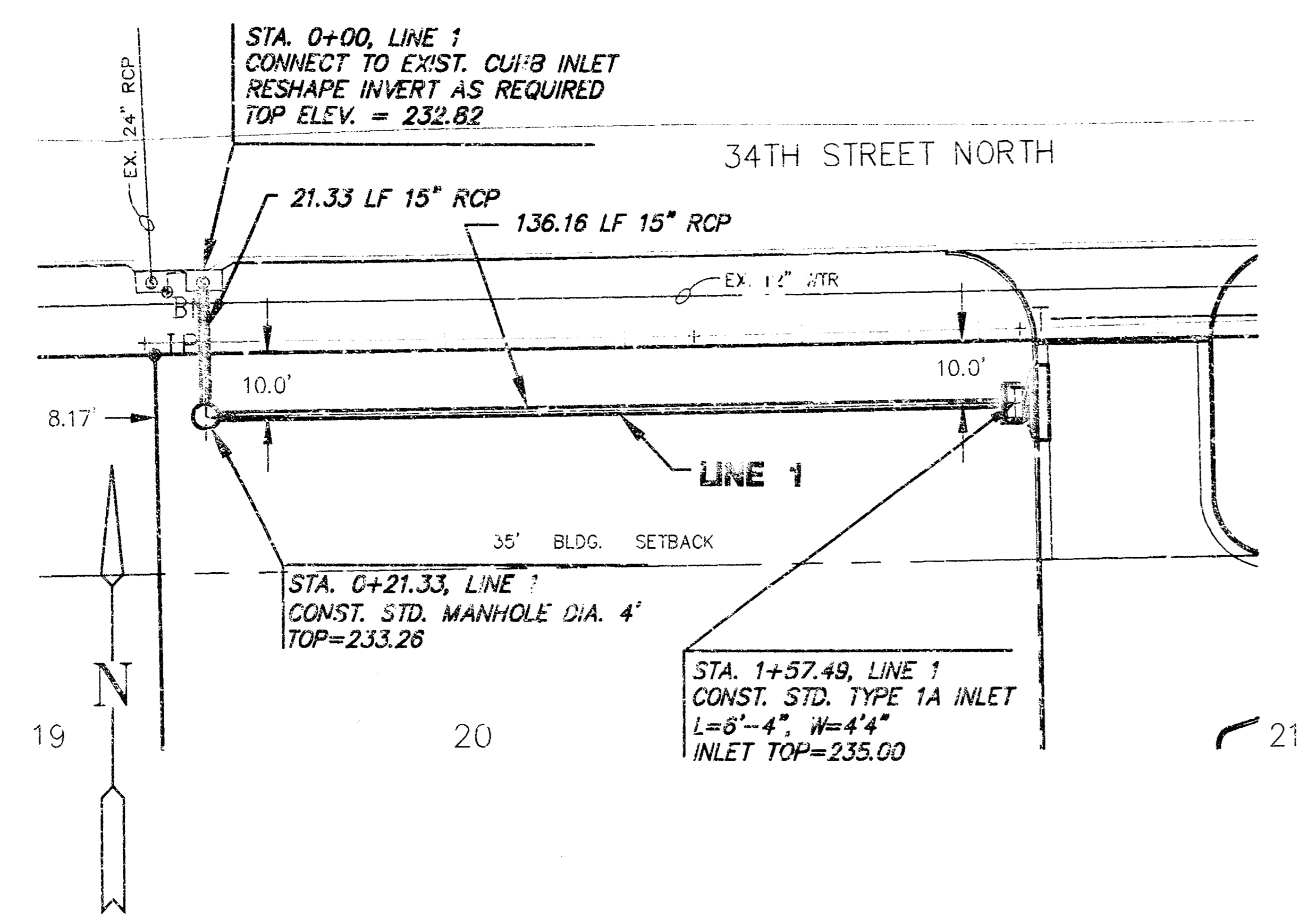


**LEE AEROSPACE**  
 PROJECT NAME  
**STORM WATER PLANS**  
 SHEET TITLE

MID-KANSAS ENGINEERING CONSULTANTS, INC. 411 N. WEBB ROAD WICHITA, KS. 67206 316-684-9600	JTC DESIGN BY.	DAC DRAWN BY.	JTC CHECKED
	NOVEMBER 1998 DATE	98113_DT JOB NO.	1 / SHEET/OF

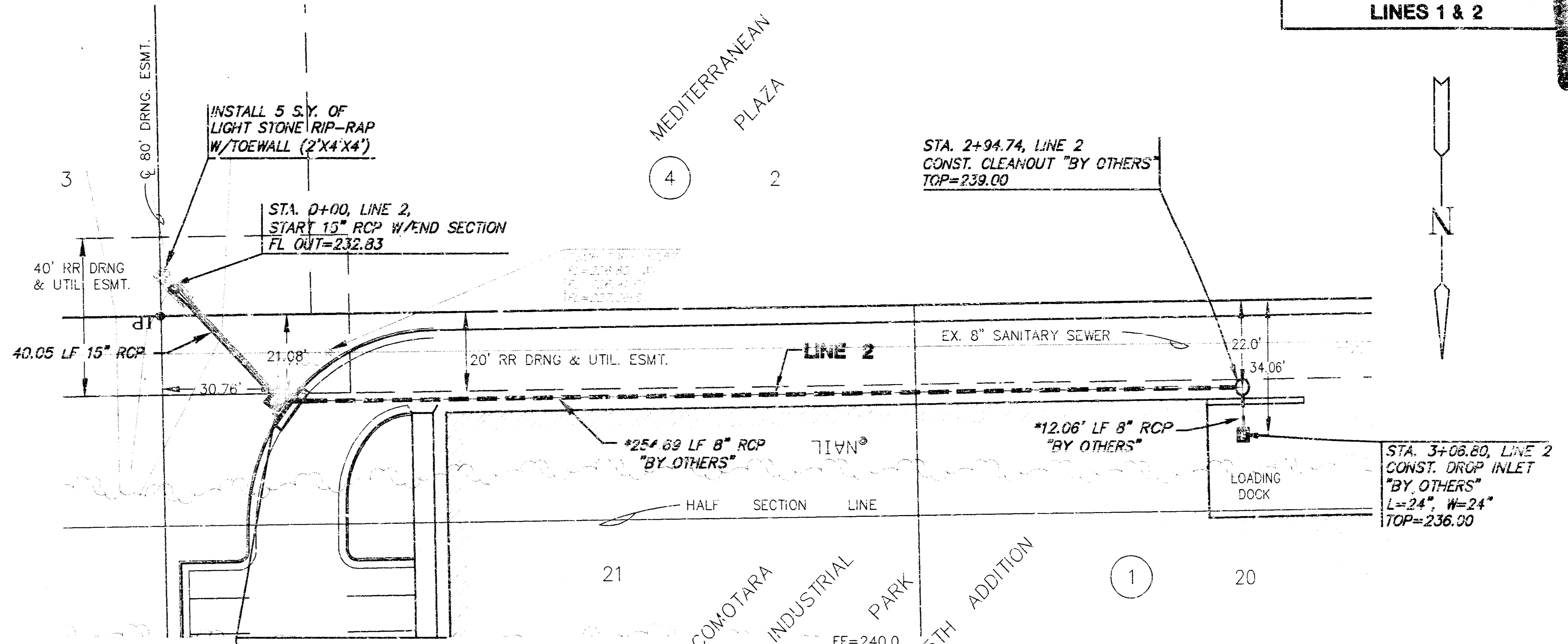
10 NOV 03 12:36:10 1998

**LEE AEROSPACE  
STORM WATER SEWER PLAN  
LINES 1 & 2**



**PLAN LINE 1**

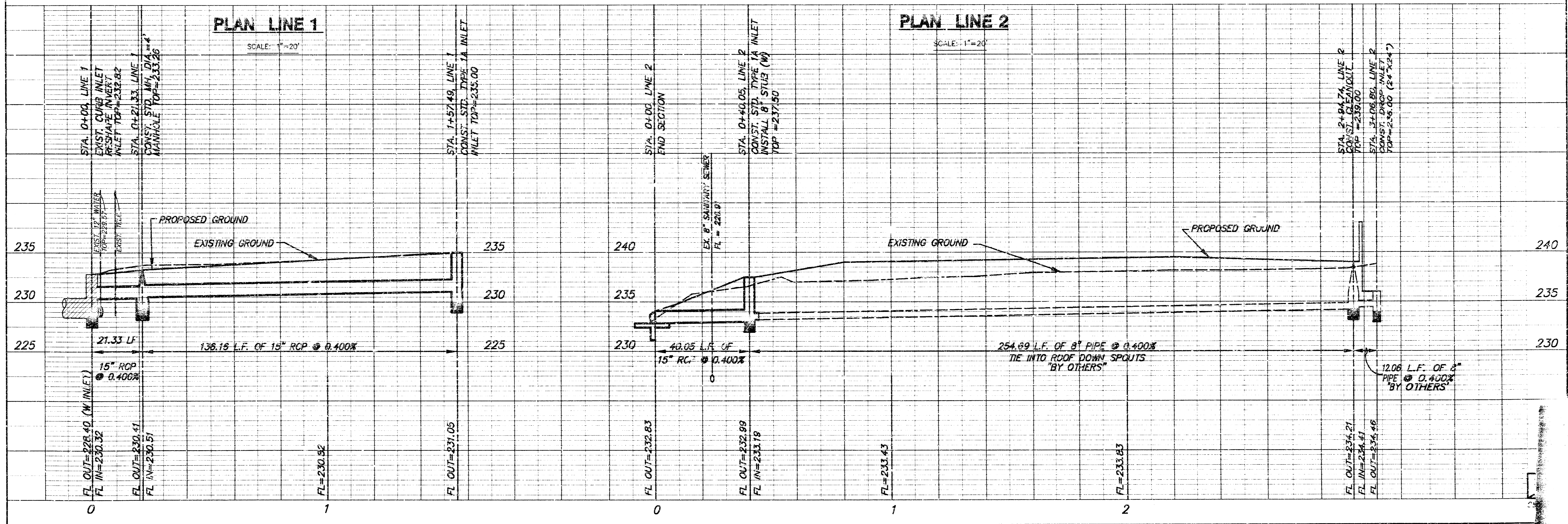
SCALE: 1"=20'



**PLAN LINE 2**

SCALE: 1"=20'

\* THE PORTION OF PRIVATE 8" STORM WATER SEWER REQUIRES AN O.C.I. PERMIT AND CAN NOT BE CONSTRUCTED BEFORE THE 15" STORM WATER SEWER PORTION HAS BEEN COMPLETED, TESTED AND ACCEPTED BY THE CITY OF WICHITA.



**PLAN LINE 1**

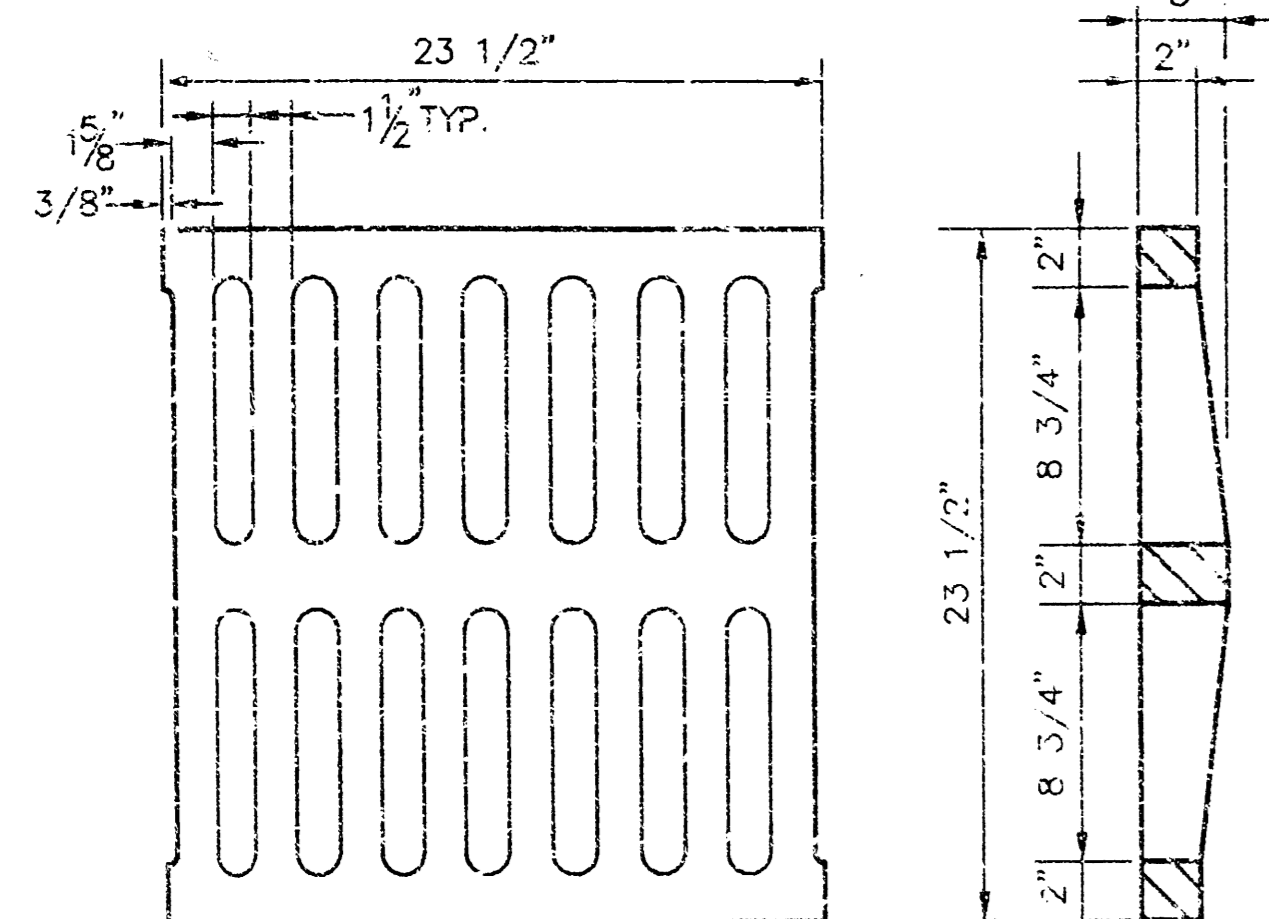
SCALE: 1"=20'

**PLAN LINE 2**

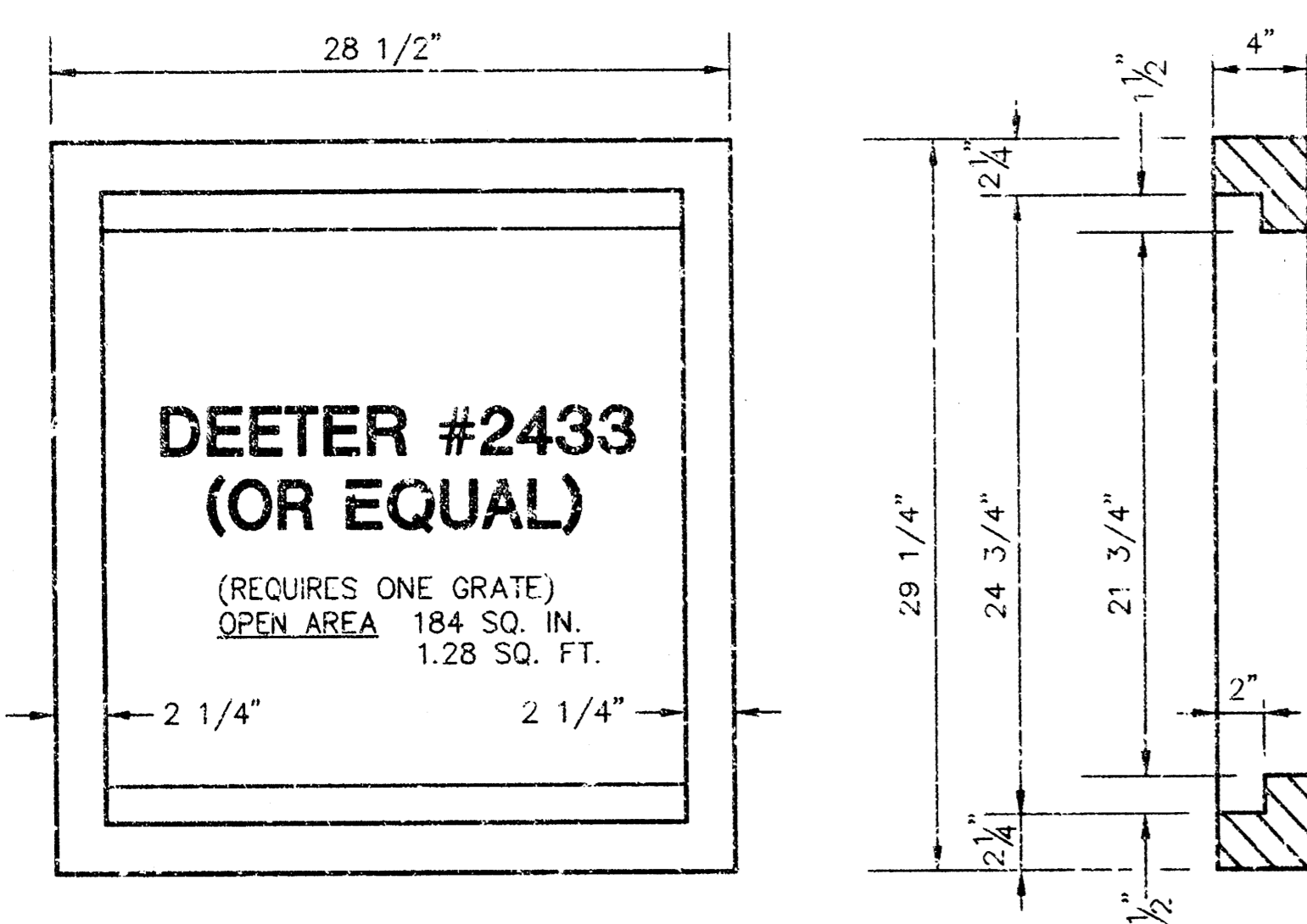
SCALE: 1"=20'



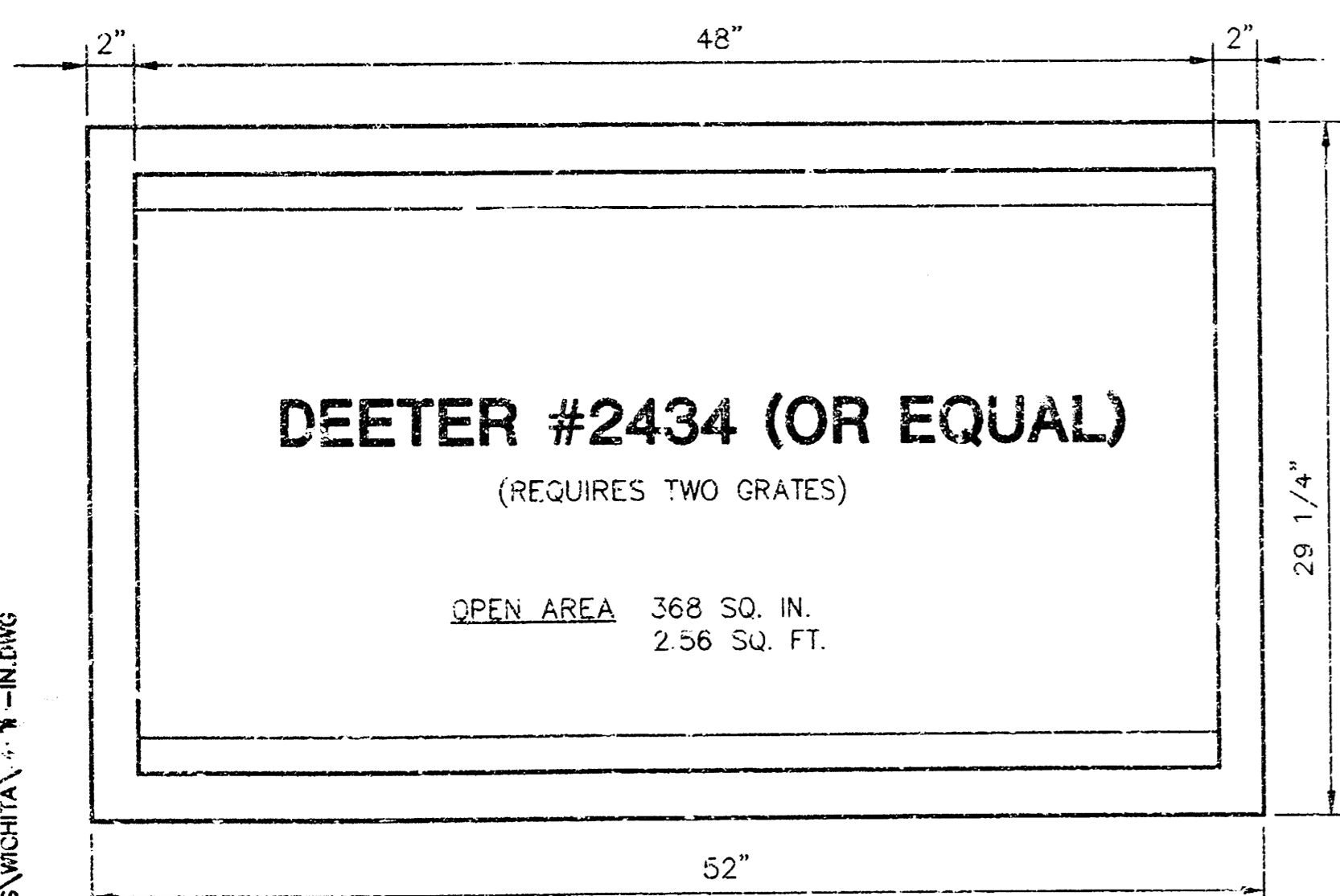
NOTE: GRATES SHALL BE IMPRINTED ON THE TOP SURFACE WITH "CITY OF WICHITA" USING LETTERS AT LEAST 1" IN HEIGHT. OTHER MARKING METHODS MAY BE USED ONLY IF APPROVED BY THE ENGINEER.



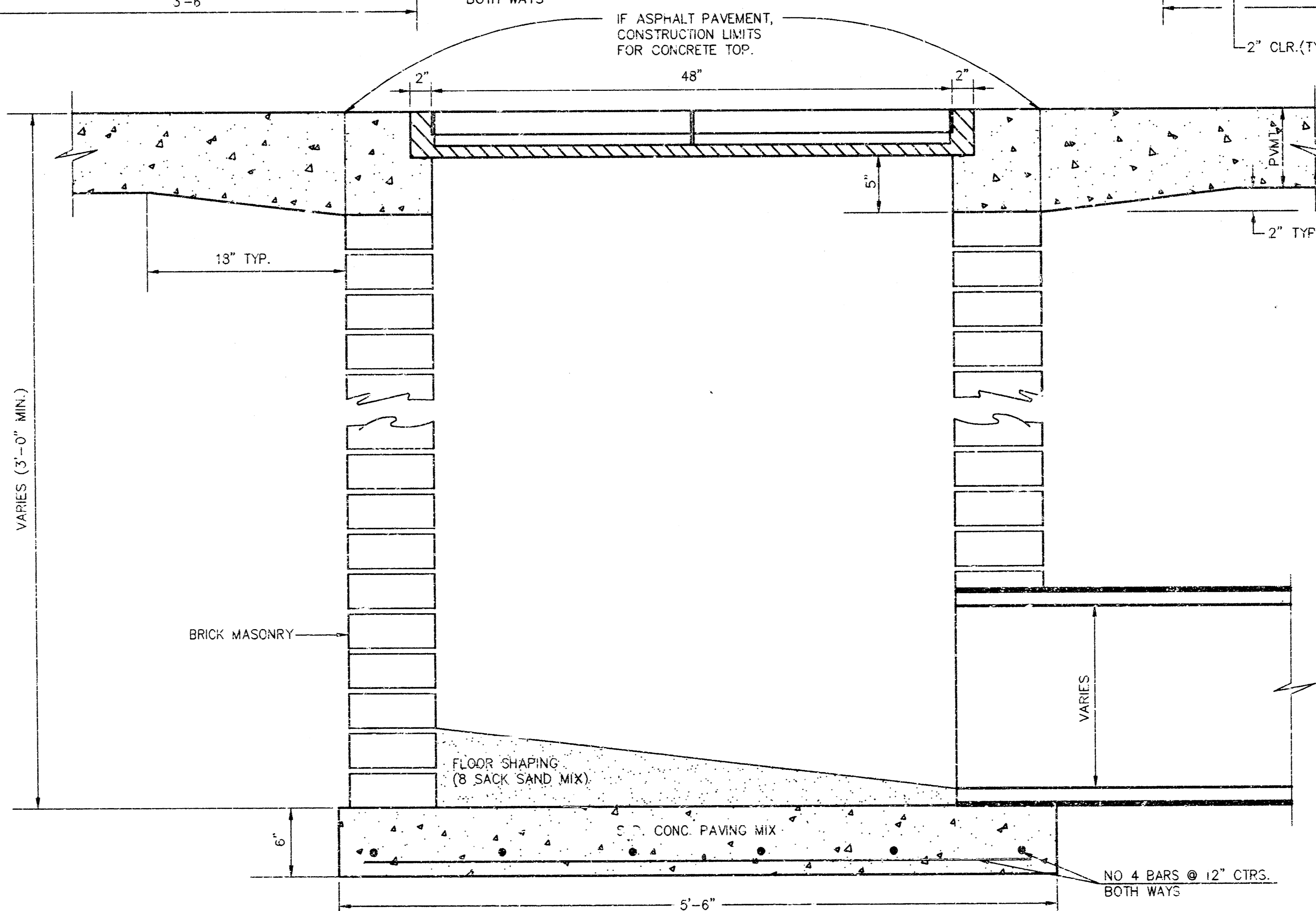
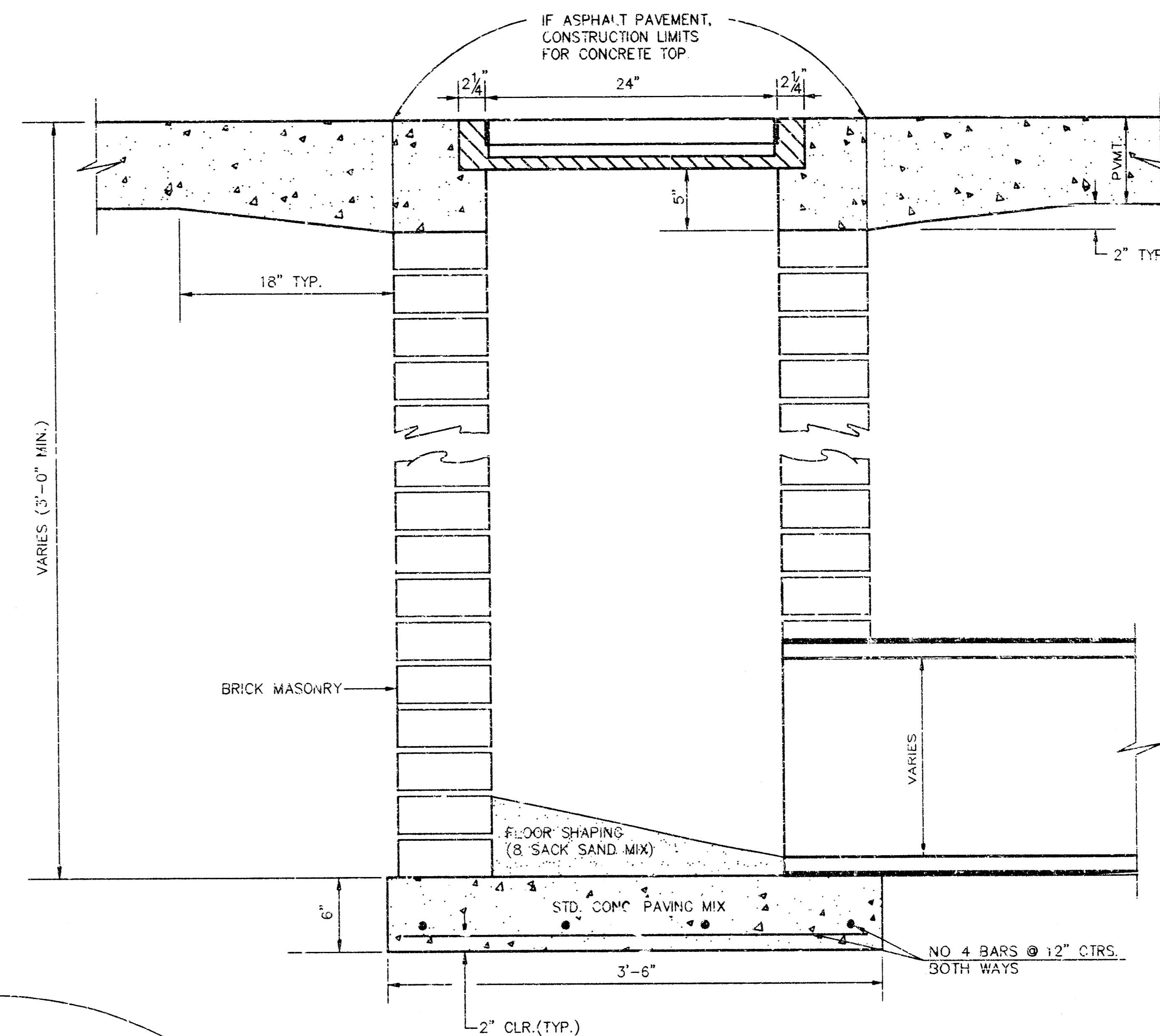
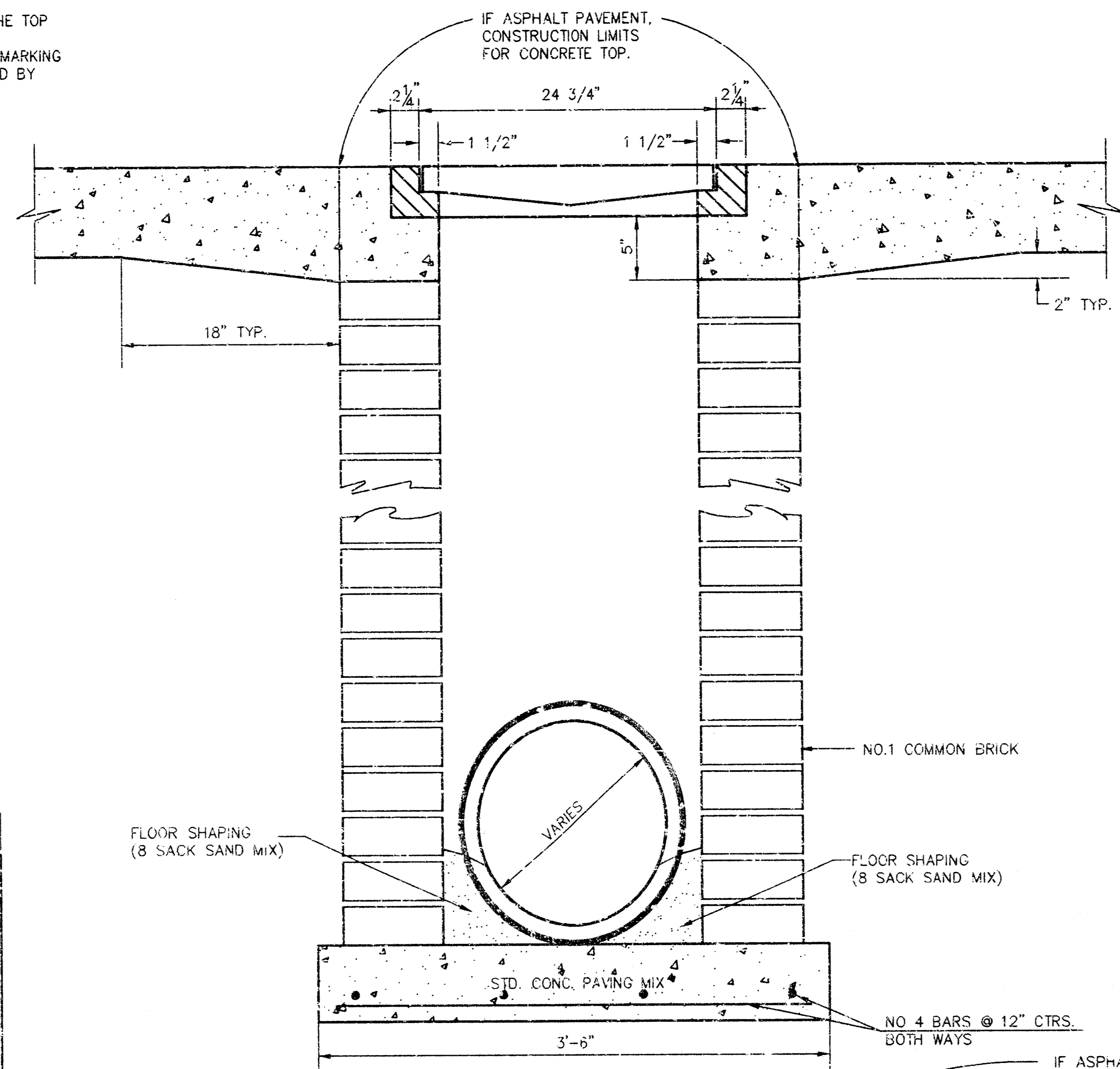
24"x24" GRATE DETAIL



SINGLE 24"x24" FRAME DETAIL



DOUBLE 24"x24" FRAME DETAIL



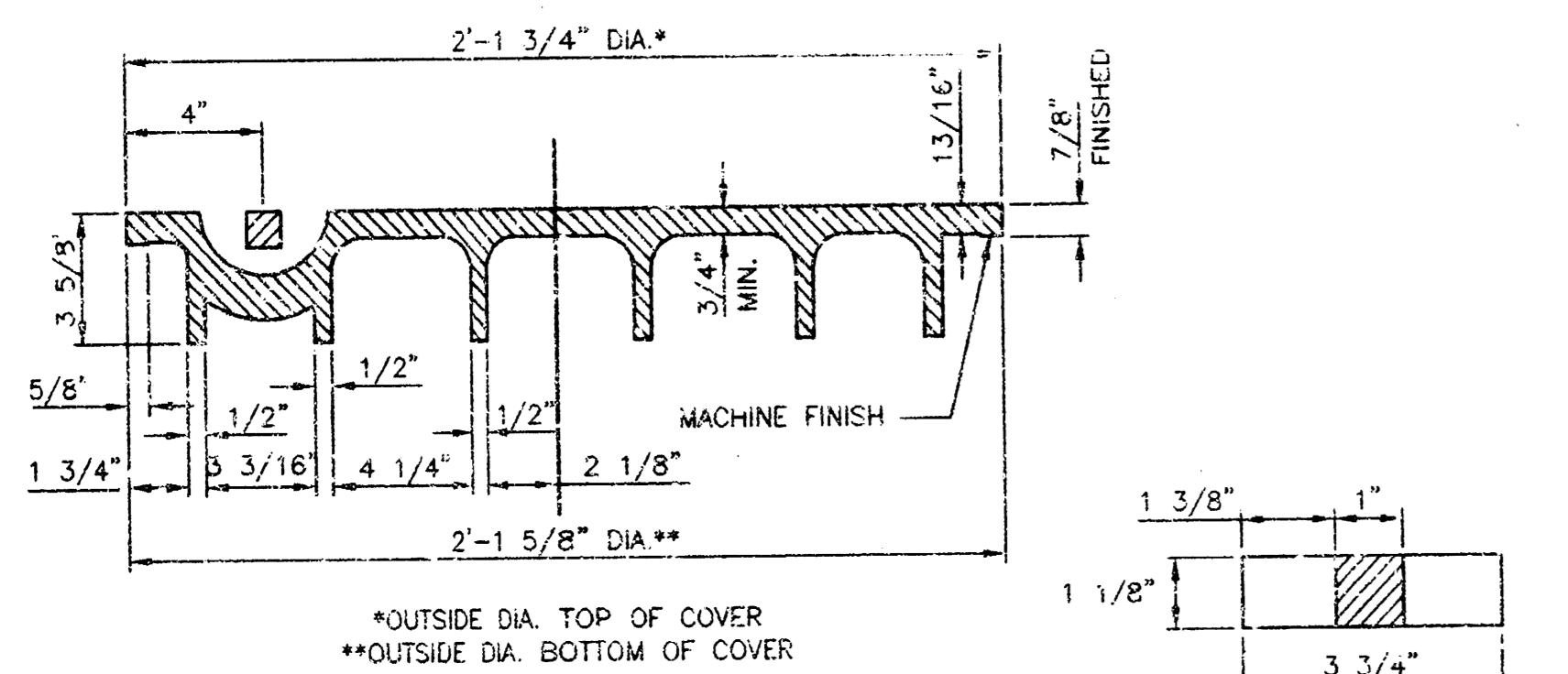
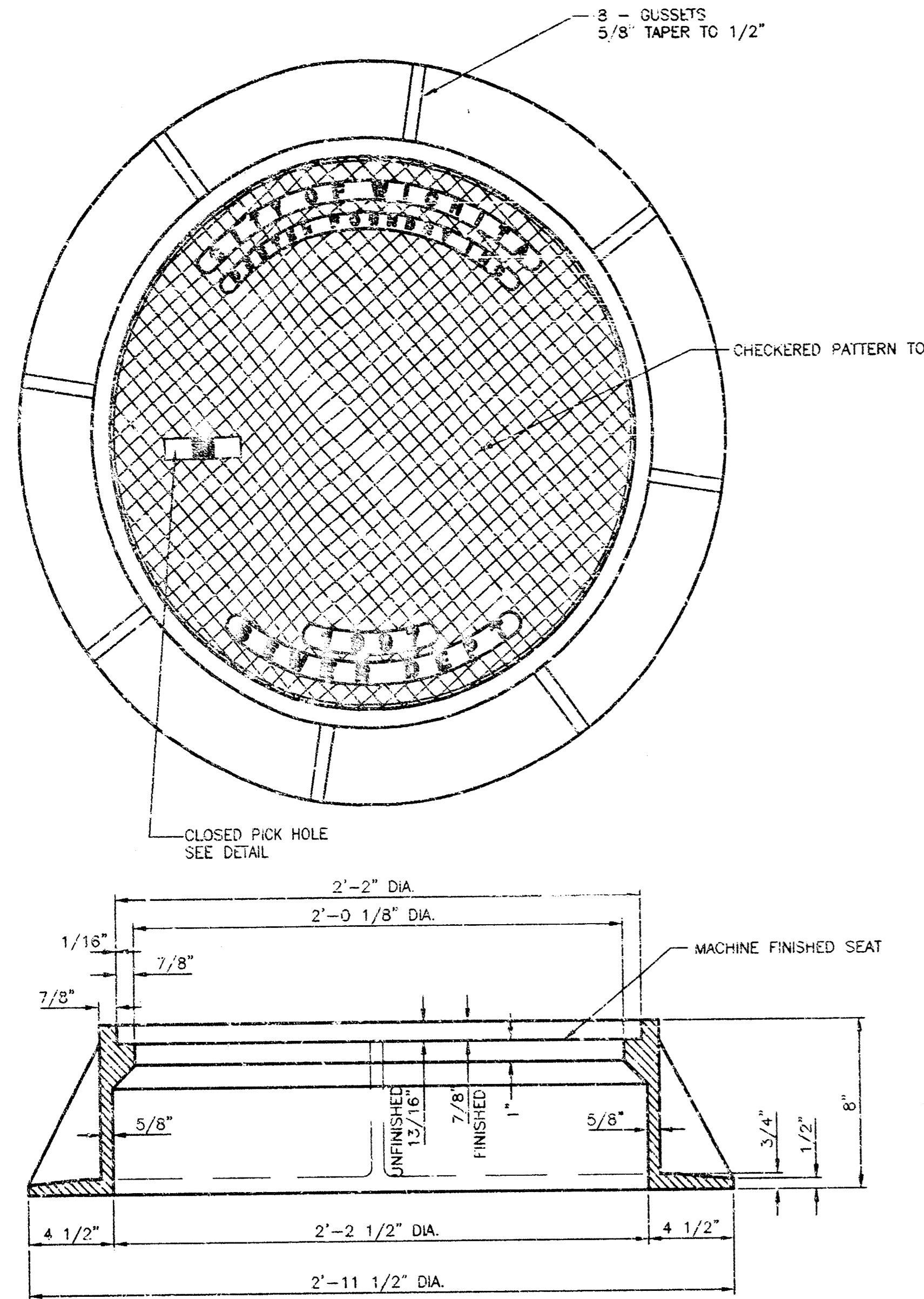
ORIFICE EQUATION		
$Q=C \cdot A \cdot \sqrt{2gh}$		$C=0.60$
h (DEPTH)	#2433 (SINGLE)	#2434 (DOUBLE)
0.1	1.95 cfs	3.89 cfs
0.2	2.76 cfs	5.50 cfs
0.3	3.37 cfs	6.74 cfs
0.4	3.89 cfs	7.78 cfs
0.5	4.35 cfs	8.70 cfs
0.6	4.77 cfs	9.53 cfs
0.7	5.15 cfs	10.30 cfs
0.8	5.50 cfs	11.01 cfs
0.9	5.84 cfs	11.67 cfs
1.0	6.15 cfs	12.30 cfs

REVISED: 5-8-90 JNJ

DROP INLET DETAILS

CITY OF WICHITA, KANSAS

Design	C.O.W.	Checked by	Checked by
Drawn by	Date	Date	Job No.

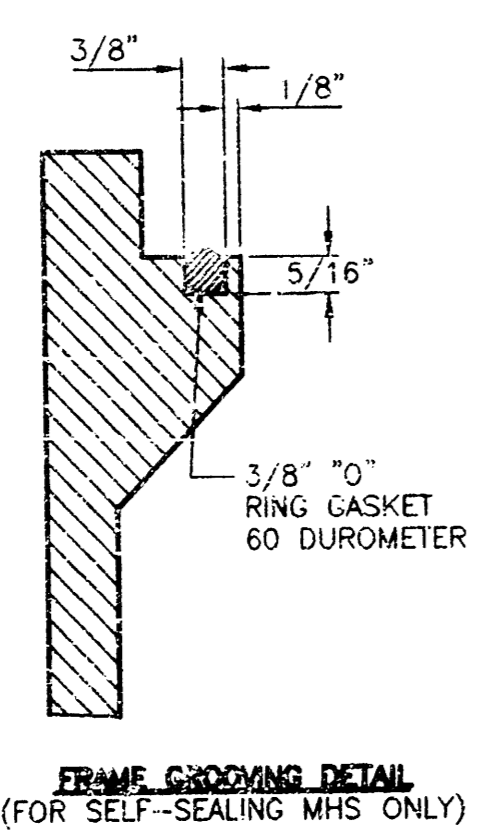


**MANHOLE FRAME AND COVER**

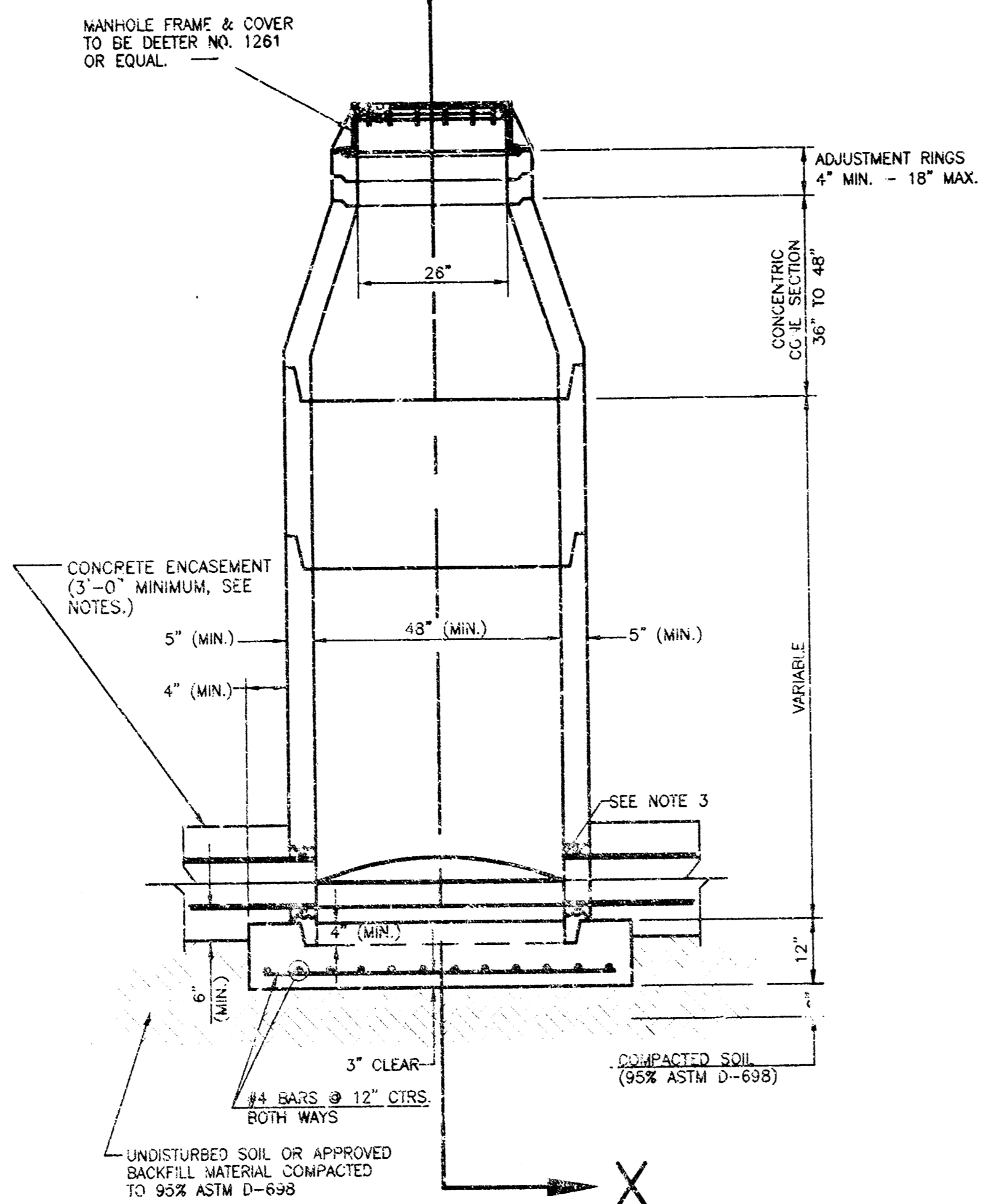
(TOTAL WEIGHT = 430 LBS.)

**MANHOLE FRAME AND COVER NOTES**

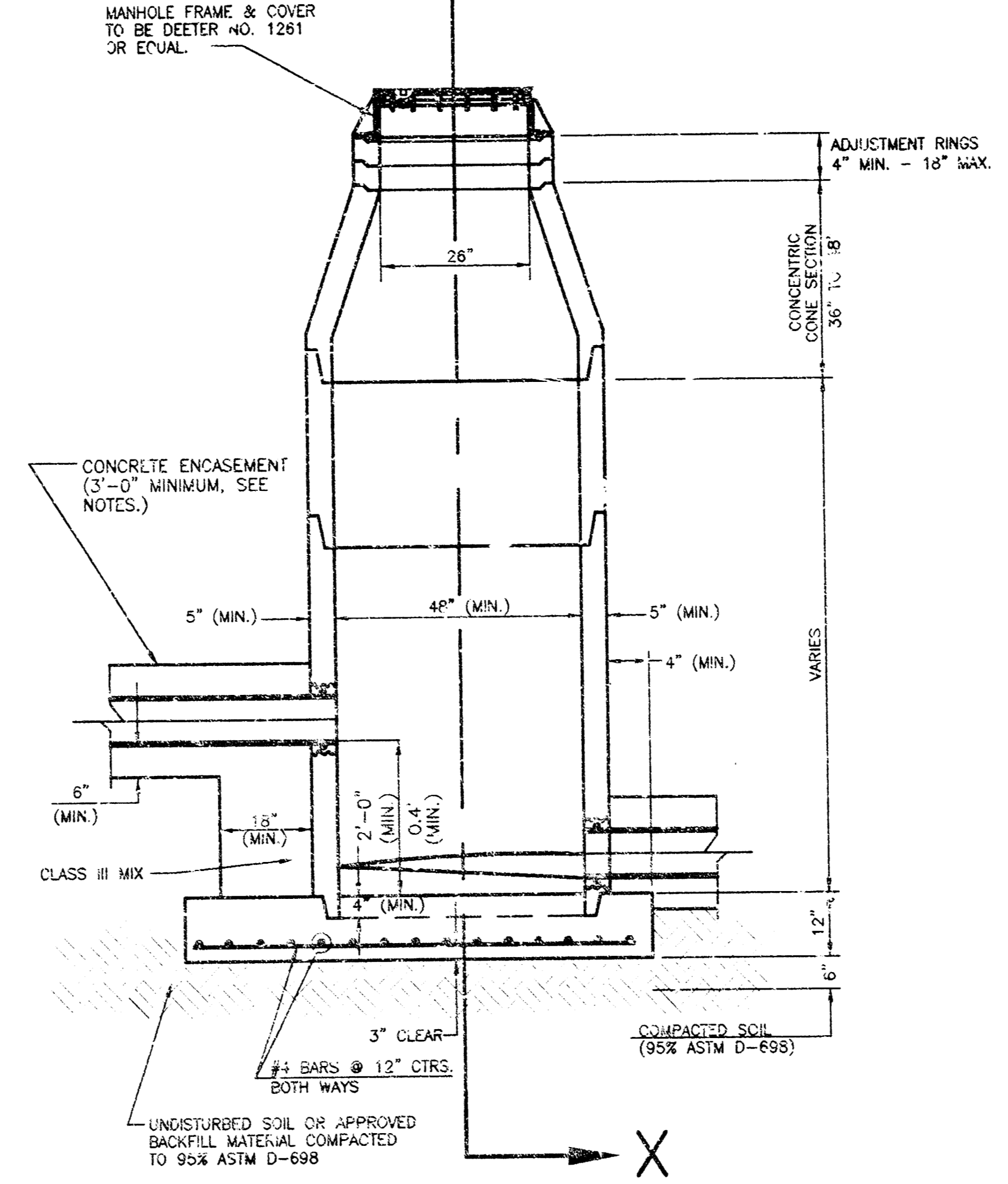
1. CAST IRON MANHOLE FRAME AND COVER SHALL CONFORM TO ASTM A-48, CLASS 50, OR BETTER.
2. THE FRAMES AND COVERS SHALL BE OF A NONRATCHING TYPE OR WITH MACHINED BEARING SURFACES SO FITTING PARTS WILL NOT RATTLE OR ROCK UNDER TRAFFIC.
3. MANHOLE CASTINGS SHALL BE DEETER FOUNDRY (NO. 1261) OR APPROVED EQUAL, UNLESS OTHERWISE SPECIFIED IN THE SPECIAL CONDITIONS. (MINIMUM WT.-430 LBS.) ALL MANHOLE CASTINGS, REGARDLESS OF TYPE, SHALL BE CONSIDERED SUBSIDIARY TO THE UNIT PRICES BID FOR THE VARIOUS MANHOLE TYPES.
4. GRIND ALL BURRS SMOOTH, CLEAN THOROUGHLY, THEN APPLY SHOP COAT OF ASPHALT BASE PAINT.
5. THE MANUFACTURER SHALL SUBMIT SHOP DRAWINGS TO THE ENGINEER FOR APPROVAL PRIOR TO MANUFACTURE. THE ENGINEER SHALL RETAIN THE RIGHT TO REJECT CASTINGS NOT CONFORMING TO THE SPECIFICATIONS OR THE APPROVED SHOP DRAWINGS.
6. WHERE SELF-SEALING MANHOLE FRAMES ARE SPECIFIED ON THE PLANS, THE MANHOLE FRAME SHALL BE FINISHED WITH AN APPROVED O-RING GASKET GROOVED INTO THE BEARING SURFACE OF THE MANHOLE FRAME (PER DETAIL). THE O-RING GASKET SHALL NOT BE INSTALLED IN THE MANHOLE FRAME UNTIL AFTER FINAL INSPECTION AND ACCEPTANCE OF THE PROJECT BY THE ENGINEER. THE CONTRACTOR SHALL SUPPLY TO THE OWNER ONE (1) REPLACEMENT O-RING GASKET FOR EACH SELF-SEALING MANHOLE SPECIFIED.



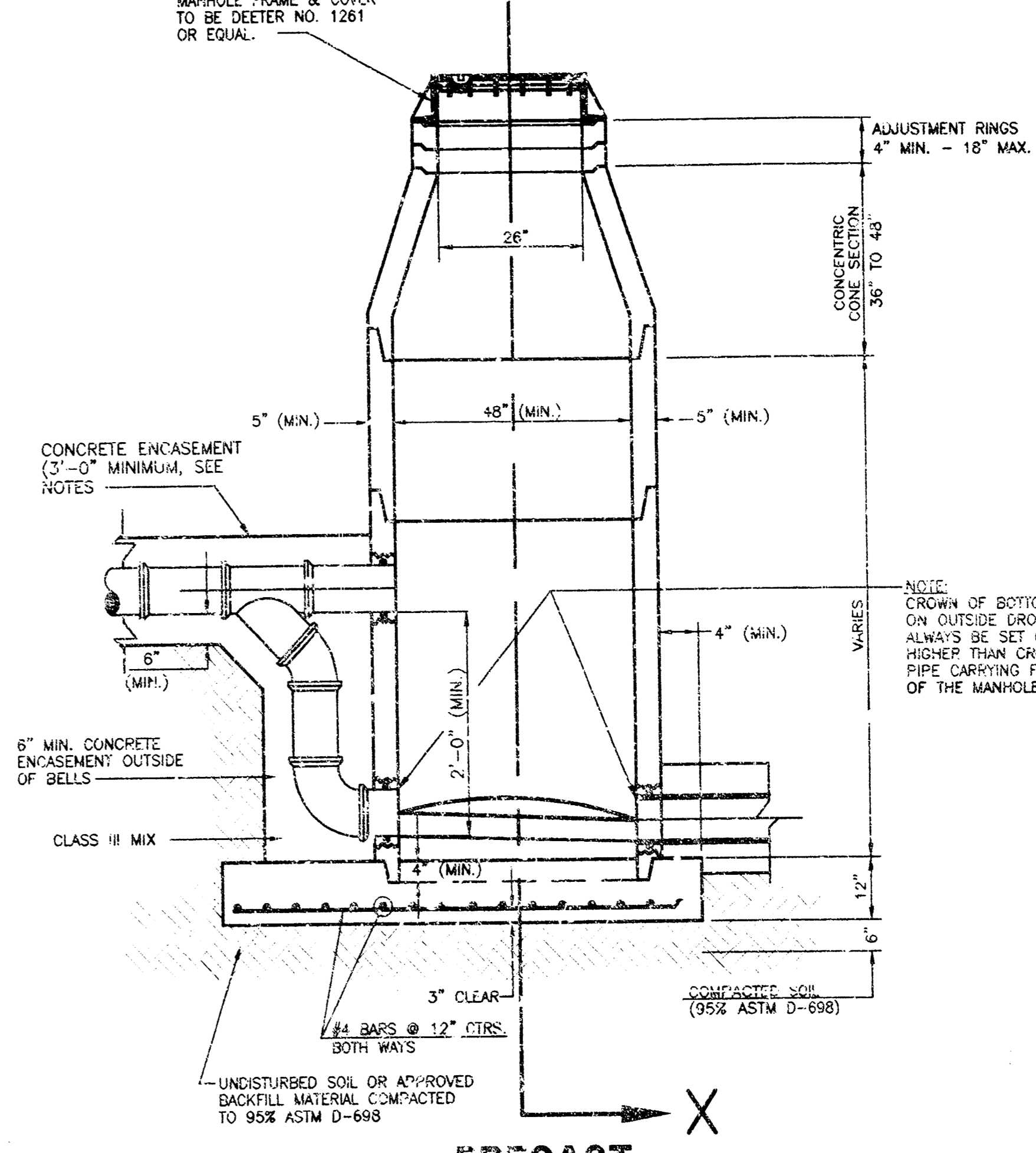
FRAME GROOVING DETAIL (FOR SELF-SEALING MHS ONLY)



**PRECAST STANDARD MANHOLE TYPE 'A'**



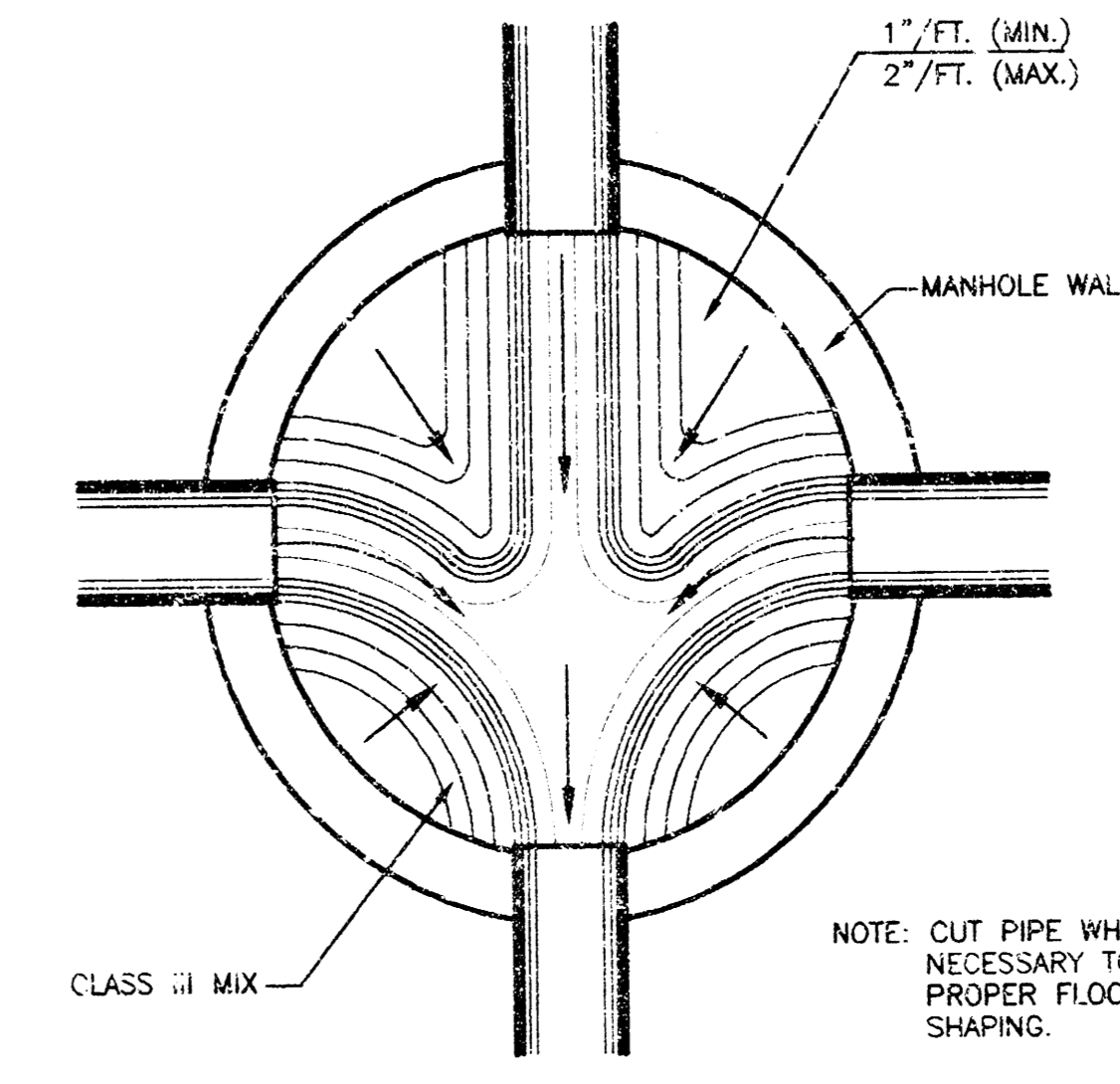
**PRECAST INSIDE DROP MANHOLE TYPE 'B'**



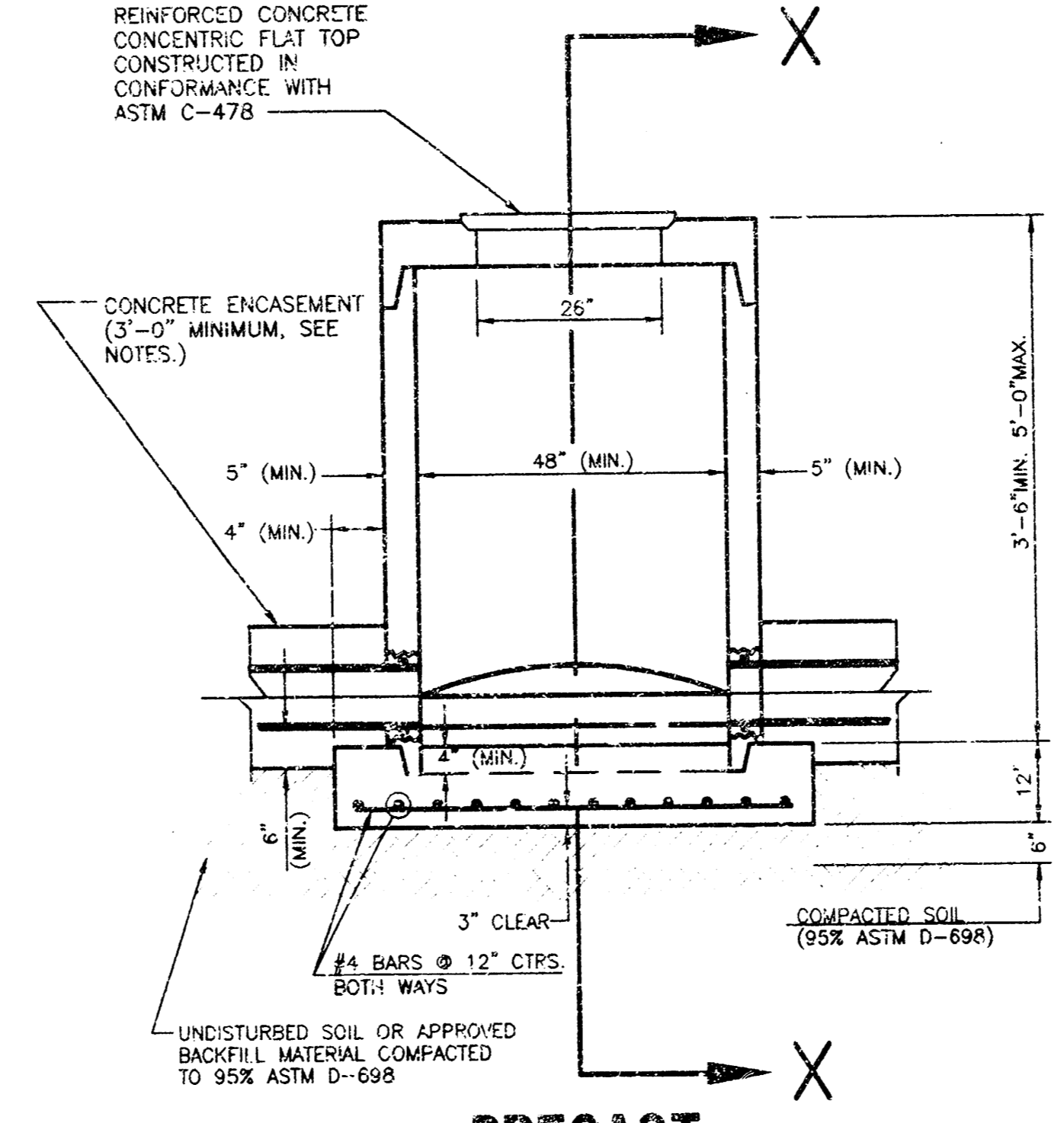
**PRECAST OUTSIDE DROP MANHOLE TYPE 'C'**

**PRECAST MANHOLE NOTES**

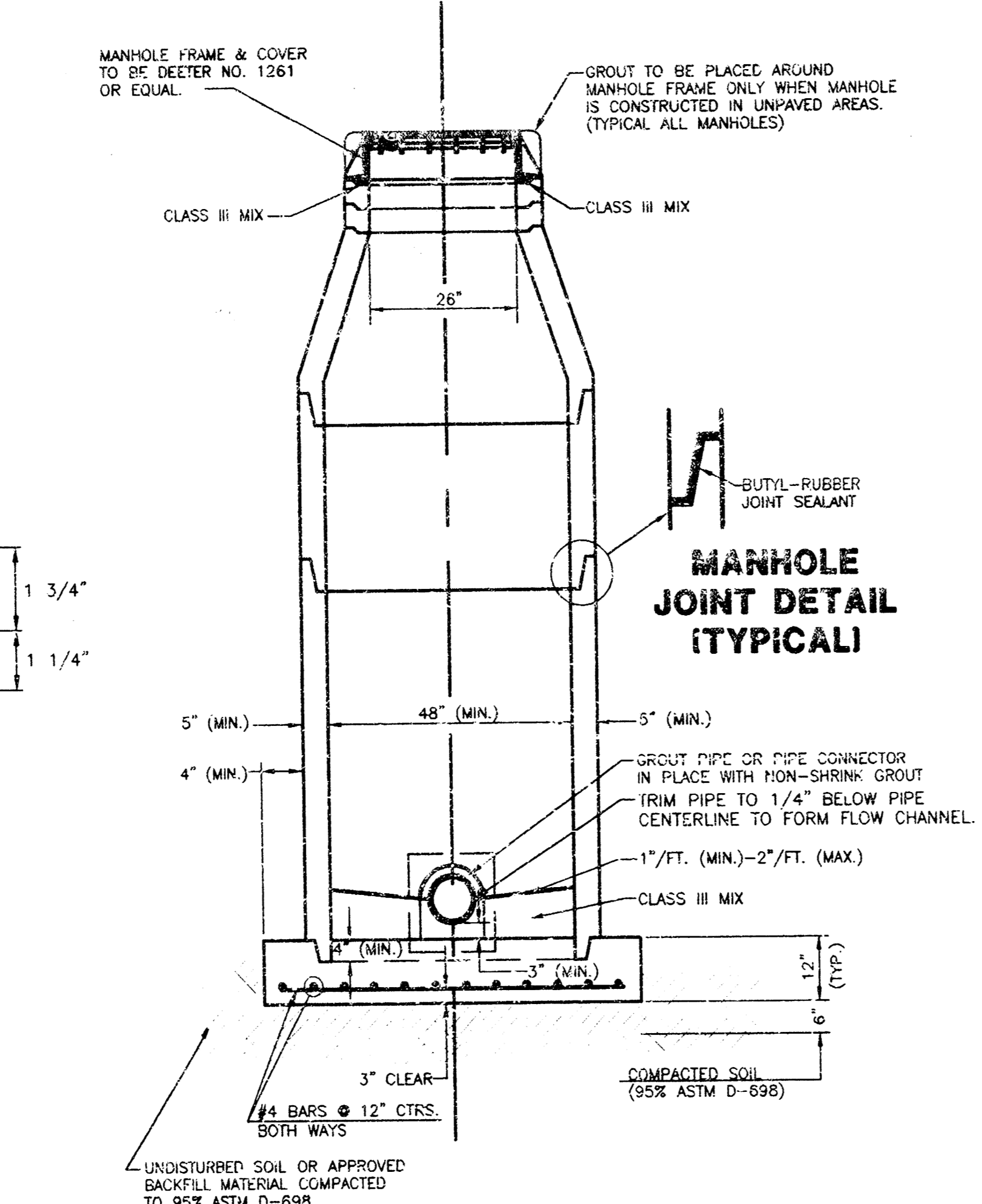
1. IF, IN THE OPINION OF THE ENGINEER, THE MANHOLE SUBGRADE APPEARS UNSTABLE, THE CONTRACTOR WILL HAVE THE OPTION TO COMPACT SUBGRADE AS SHOWN OR INCREASE THE THICKNESS OF THE MANHOLE BASE AS DIRECTED BY THE ENGINEER.
2. STEEL REINFORCING WILL BE REQUIRED IN ALL MANHOLE BASES.
3. APPROVED FLEXIBLE WATERSTOP GASKETS WHICH MEET OR EXCEED THE TEST REQUIREMENTS OF ASTM C-923 SHALL BE INSTALLED TO JOIN THE SEWER TO THE MANHOLE WALL WHEN PLASTIC PIPE IS USED. SEWER PIPE EXTENDING FROM MANHOLES SHALL BE SUPPORTED WITH CONCRETE ENCASEMENT A MINIMUM OF 3 FEET FROM THE MANHOLE WALL.
4. THE MANHOLE FRAME SHALL BE SEATED ON AN APPROVED BUTYL-RUBBER SEALANT TO PROVIDE A WATER-TIGHT SEAL BETWEEN THE MANHOLE ADJUSTMENT RING AND THE MANHOLE FRAME.
5. GASKETED PIPE PLUGS AND CAPS SHALL BE PROVIDED BY THE PIPE SUPPLIER.
6. ALL MANHOLE CONSTRUCTION SHALL BE WATER TIGHT.
7. TOP OF MANHOLE FLAT SLAB SHALL BE AT LEAST 3 INCHES BELOW THE FLOW LINE OF THE OUTLET PIPE TO INSURE SUFFICIENT MINIMUM THICKNESS OF SHAPEL INVERT.
8. ALL PRECAST CONCRETE MANHOLE SECTIONS SHALL CONFORM TO THE LATEST REVISION OF ASTM C-478 AS MODIFIED BY THE SPECIFICATIONS.
9. CONCRETE FOR MANHOLE BASES SHALL BE CLASS I AS DESCRIBED IN THE SPECIFICATIONS.
10. PRECAST MANHOLES SHALL BE SET AT LEAST 4 INCHES INTO MANHOLE BASE.
11. MANHOLES WITH PIPE SIZES 24" AND LARGER SHALL HAVE 5" INSIDE DIAMETER (MIN.).
12. INSIDE DIAMETER OF FIVE-FOOT DIAMETER PRECAST MANHOLES SHALL REMAIN CONSTANT TO THE LOCATION OF THE REDUCING FLAT TOP WHICH CONNECTS THE FOUR-FOOT DIAMETER CONE SECTION TO THE FIVE-FOOT DIAMETER MANHOLE BARREL.
13. ALL INTERIOR CONCRETE SURFACES ABOVE THE BENCH OF PRECAST MANHOLES SHALL BE COATED WITH 2 COATS OF TRENK SERIES 56 HI-BUILD EPOXYGLUE, DRY THICKNESS OF 8 MILS (MIN.).
14. EXTERIOR MANHOLE WALLS SHALL BE COATED WITH 1 COAT VALSPAR HI-BUILD BITUMINUS COATING 35-J-10, OR TRENK 46-450 HEAVY TNEECOL, OR APPROVED EQUAL.



**TYPICAL MANHOLE FLOOR SHAPING**

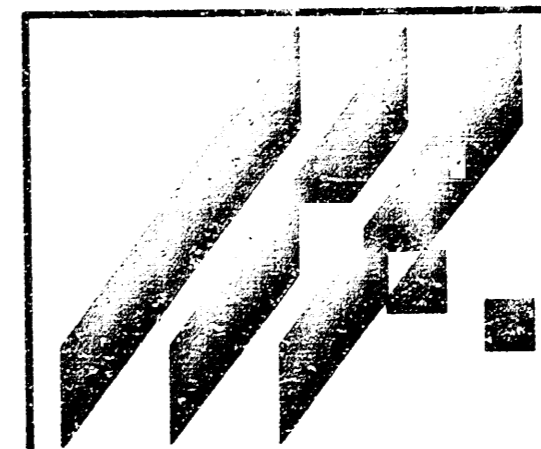


**PRECAST SHALLOW MANHOLE TYPE 'D'**



**SECTION X (TYPICAL)**

**MANHOLE JOINT DETAIL (TYPICAL)**



**LEE AEROSPACE**  
PROJECT NAME

**MANHOLE DETAILS**  
SHEET TITLE

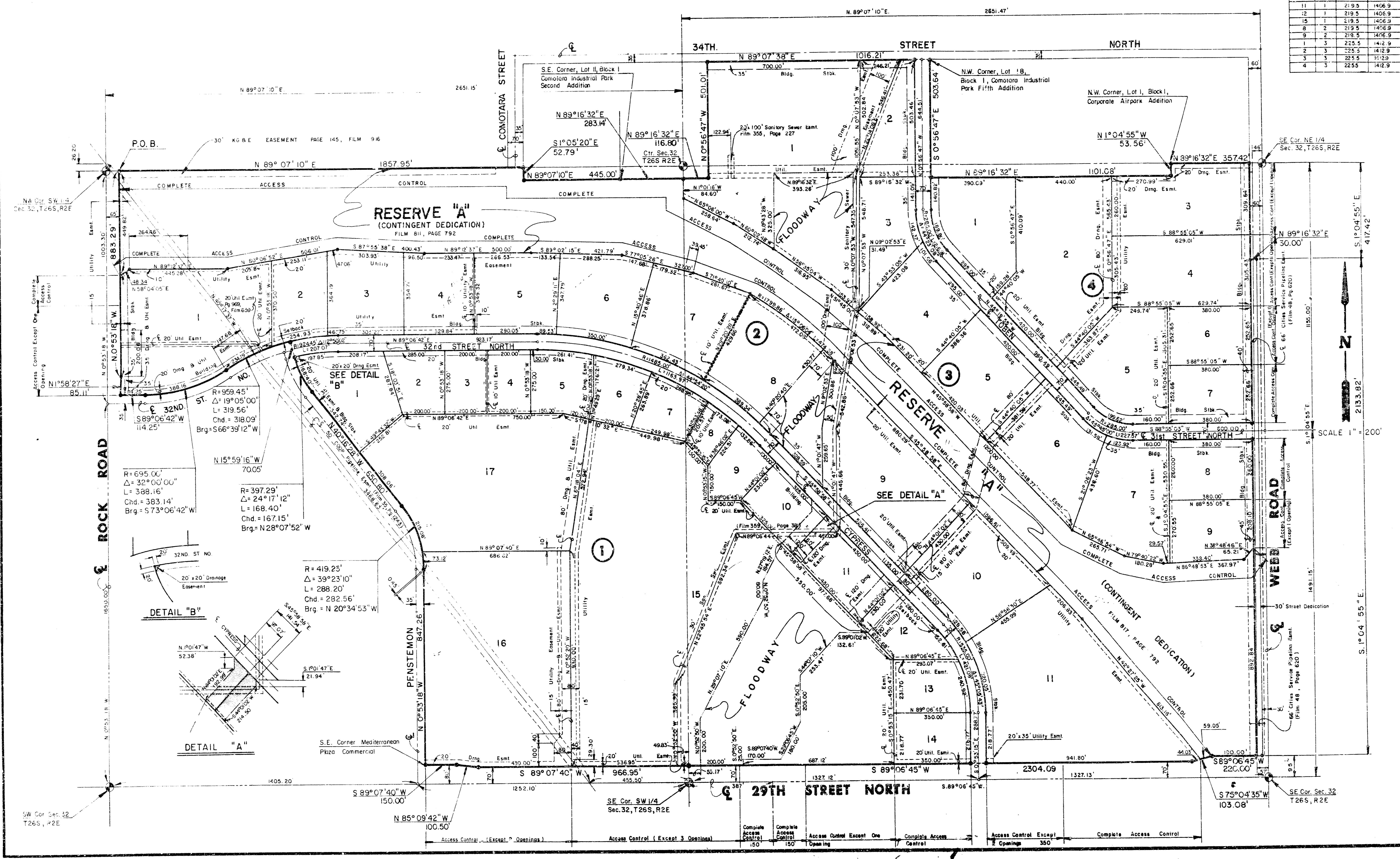
MID-KANSAS ENGINEERING CONSULTANTS, INC.  
411 N. WEBB ROAD  
WICHITA, KS. 67206  
316-684-9600

MKEC DESIGN BY:	MKEC DRAWN BY:	MKEC CHECKED:
NOVEMBER 1998 DATE	98113 JOB NO.	5 SHEET/OF

# FINAL PLAT OF MEDITERRANEAN PLAZA

AN ADDITION TO WICHITA, SEDGWICK COUNTY, KANSAS

Lot No.	Block No.	Minimum Lot Area (Acres)	Minimum Lot Area (U.S.G.S.)
10	1	219.5	1406.9
11	1	219.5	1406.9
12	1	219.5	1406.9
13	1	219.5	1406.9
14	1	219.5	1406.9
15	1	219.5	1406.9
1	3	225.5	1412.9
2	3	225.5	1412.9
3	3	225.5	1412.9
4	3	225.5	1412.9



SW Cor. Sec. 32, T26S, R2E

SE Cor. SW 1/4, Sec. 32, T26S, R2E

SE Cor. Sec. 32, T26S, R2E

**ROCK ROAD**

R=695.00'  
Δ=32°00'00"  
L=368.16'  
Chd.=383.14'  
Brq.=573°06'42"W

**DETAIL "B"**

R=959.45'  
Δ=19°05'00"  
L=319.56'  
Chd.=318.09'  
Brq.=566°39'12"W

**DETAIL "A"**

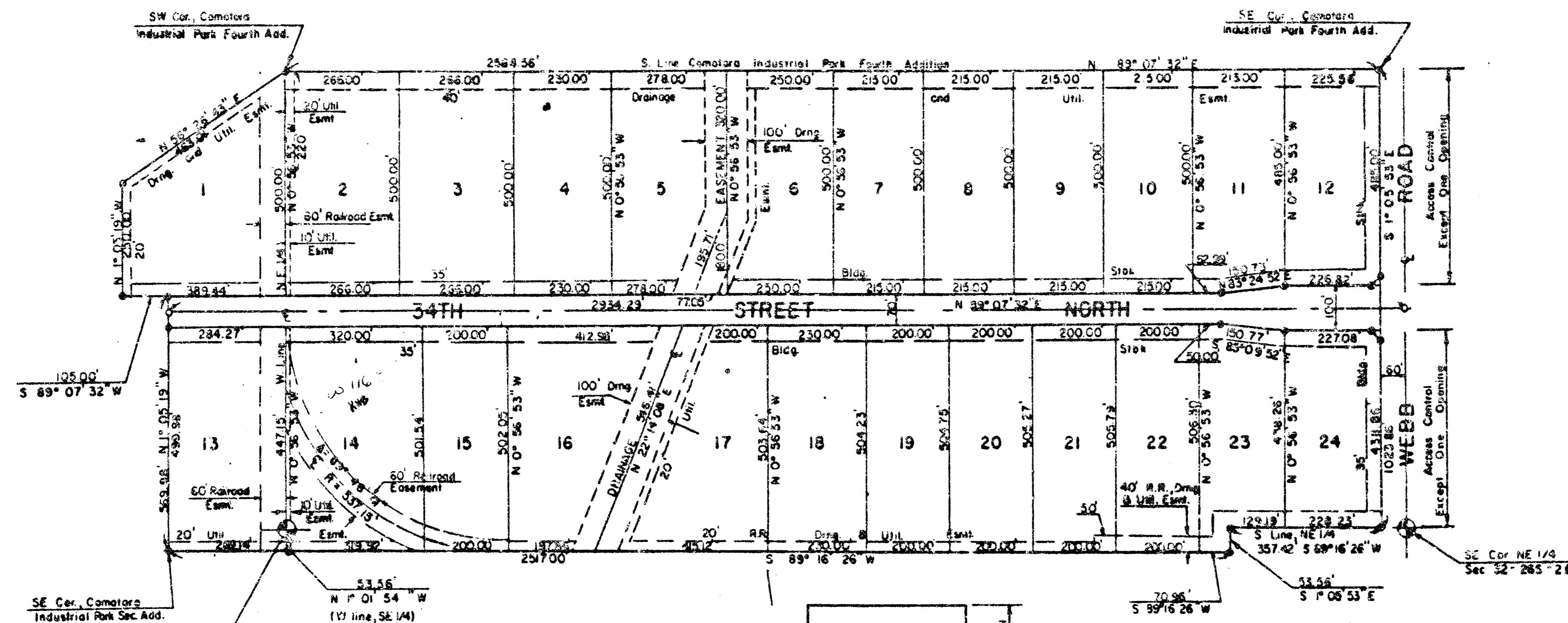
R=419.25'  
Δ=39°23'10"  
L=288.20'  
Chd.=282.56'  
Brq.=N 20°34'53"W

SCALE 1" = 200'

# FINAL PLAT OF COMOTARA INDUSTRIAL PARK FIFTH ADDITION

SECTION TO NICHITA, SEDGWICK COUNTY, KANSAS

SCALE 1"=200'



#41909

This plat approved and all dedications shown hereon, if any, accepted by the Board of County Commissioners of Sedgewick County, Kansas this 30 day of December, 1978.

**Robert F. Leggett**, Chairman  
**James D. ...**, Commissioner  
**John ...**, Commissioner  
**...**, County Clerk

STATE OF KANSAS, COUNTY OF SEDGWICK, ss:  
 This is to certify that this instrument was filed for record in the Register of Deeds Office on 12/11/78 on the 31ST day of December, 1978.

**...**, Register of Deeds  
**...**, Deputy



This plat of "Comotara Industrial Park Fifth Addition" has been submitted to and approved by the Wichita-Sedgewick County Metropolitan Area Planning Commission, Wichita, Kansas.

Dated this 26 day of October, 1978.

Wichita-Sedgewick County Metropolitan Area Planning Commission  
**James D. ...**, Chairman  
**...**, Secretary  
**...**, City Clerk  
**...**, County Clerk

to the Boeing Wichita Company, a division of Boeing Company, lessee of Lots 2 through 5 inclusive within the above described property do hereby consent to the plat of "Comotara Industrial Park Fifth Addition".

Boeing Wichita Company, a division of Boeing  
**...**, Director of Legal Department

STATE OF KANSAS, COUNTY OF SEDGWICK, ss:  
 It is remembered on this 20 day of November, 1978, before me, a Notary Public in and for the State and County, came the Boeing Wichita Company, a division of Boeing Company, by E. S. ... Director of Legal Department for the Boeing Wichita Company, to me personally known to be the true person who executed the foregoing instrument of writing and duly acknowledged the execution of the same. In testimony whereof, I have hereunto set my hand and seal of office on the day and year above written.

**...**, Notary Public  
 My Appointment Expires May 24, 1980



... I, the undersigned, a Licensed Surveyor in Kansas, do hereby certify that this is a true and correct copy of the original plat of the above described property as recorded in the Register of Deeds Office of Sedgewick County, Kansas, and that the same is a true and correct copy of the original plat as recorded in the Register of Deeds Office of Sedgewick County, Kansas.

Beginning at a portion of Block 4, Comotara Industrial Park Addition to Wichita, Sedgewick County, Kansas, located in Section 22, T23N, R22E of the 2nd PM, more accurately described as follows:

Beginning at the southeast corner of Comotara Industrial Park Fourth Addition, an addition to Wichita, Sedgewick County, Kansas, 100.00 feet to the north line of the north-south line of road Section 22; thence along said north line bearing S 89° 16' 26" W, 227.00 feet; thence S 2° 27' 47" E, 33.00 feet; thence S 89° 16' 26" W, 108.00 feet; thence N 1° 26' 12" E, 125.00 feet; thence S 89° 16' 26" W, 442.21 feet to the southeast corner of Comotara Industrial Park Fourth Addition; thence along the south line of Comotara Industrial Park Fourth Addition bearing S 89° 16' 26" W, 227.00 feet to the point of beginning, containing 3.48 acres, more or less.

I hereby certify that the details of this plat are correct to the best of my knowledge and belief that 26 day of November, 1978.

**...**, Licensed Surveyor  
 My Appointment Expires May 24, 1980

Know all men by these presents that the undersigned heirs of a portion of the land as more set forth in the Land Surveyor's Certificate, have caused the same to be surveyed and platted into lots and a street, the same to be known as "Comotara Industrial Park Fifth Addition" to Wichita, Sedgewick County, Kansas. The street is hereby dedicated to and for the use of the public. Expenses for the construction and maintenance of public utilities and drainage as indicated on the accompanying plat are hereby granted.

Notary Public  
**...**, Notary Public  
 My Appointment Expires May 24, 1980

... I, the undersigned, a Licensed Surveyor in Kansas, do hereby certify that this is a true and correct copy of the original plat of the above described property as recorded in the Register of Deeds Office of Sedgewick County, Kansas, and that the same is a true and correct copy of the original plat as recorded in the Register of Deeds Office of Sedgewick County, Kansas.

Beginning at a portion of Block 4, Comotara Industrial Park Addition to Wichita, Sedgewick County, Kansas, located in Section 22, T23N, R22E of the 2nd PM, more accurately described as follows:

Beginning at the southeast corner of Comotara Industrial Park Fourth Addition, an addition to Wichita, Sedgewick County, Kansas, 100.00 feet to the north line of the north-south line of road Section 22; thence along said north line bearing S 89° 16' 26" W, 227.00 feet; thence S 2° 27' 47" E, 33.00 feet; thence S 89° 16' 26" W, 108.00 feet; thence N 1° 26' 12" E, 125.00 feet; thence S 89° 16' 26" W, 442.21 feet to the southeast corner of Comotara Industrial Park Fourth Addition; thence along the south line of Comotara Industrial Park Fourth Addition bearing S 89° 16' 26" W, 227.00 feet to the point of beginning, containing 3.48 acres, more or less.

I hereby certify that the details of this plat are correct to the best of my knowledge and belief that 26 day of November, 1978.

**...**, Licensed Surveyor  
 My Appointment Expires May 24, 1980

STATE OF KANSAS, COUNTY OF SEDGWICK, ss:  
 It is remembered on this 21 day of November, 1978, before me, a Notary Public in and for the State and County, came the Wichita Development Company, by Robert A. ... Attorney in Fact for Wichita Development Company, to me personally known to be the true person who executed the foregoing instrument of writing and duly acknowledged the execution of the same. In testimony whereof, I have hereunto set my hand and seal of office on the day and year above written.

**...**, Notary Public  
 My Appointment Expires May 24, 1980

STATE OF KANSAS, COUNTY OF SEDGWICK, ss:  
 It is remembered on this 21 day of November, 1978, before me, a Notary Public in and for the State and County, came the Wichita Development Company, by Robert A. ... Attorney in Fact for Wichita Development Company, to me personally known to be the true person who executed the foregoing instrument of writing and duly acknowledged the execution of the same. In testimony whereof, I have hereunto set my hand and seal of office on the day and year above written.

**...**, Notary Public  
 My Appointment Expires May 24, 1980