

LOCATION MAP

PRIVATE STORM WATER PLANS
MARRIOTT COURTYARD
 LOT 23, BLOCK 1, FOX POINTE ADDITION
 PROJECT NO. 864PPS
 CITY OF WICHITA, KANSAS
 MICHAEL E. LINDEBAK, CITY ENGINEER
 INDEX CODE 607861

APPROVED AS NOTED
 BY CITY ENGINEER OF WICHITA

SANITARY SEWERS _____
 STORM SEWERS _____
 DRIVEWAY APPROACHED _____
 WATER MAINS _____
 PAVING _____

NOTE TO CONTRACTOR

INSPECTION AND TESTING FOR THIS PROJECT IS TO BE PROVIDED BY A LICENSED CONSULTING ENGINEERING FIRM UNDER CONTRACT WITH THE OWNER/DEVELOPER. SAID INSPECTION TO BE IN ACCORDANCE WITH THE CITY OF WICHITA STANDARD CONSTRUCTION ENGINEERING PRACTICES AND CERTIFIED BY A LICENSED PROFESSIONAL ENGINEER. NO WORK SHALL BE PERFORMED IN DEDICATED EASEMENTS OR THE PUBLIC RIGHT-OF-WAY BY THE CONTRACTOR WITHOUT SUCH INSPECTION. NOR SHALL ANY WORK BE COMMENCED IN DEDICATED EASEMENTS OR PUBLIC RIGHT-OF-WAY WITHOUT WRITTEN AUTHORIZATION BY THE CITY ENGINEER.

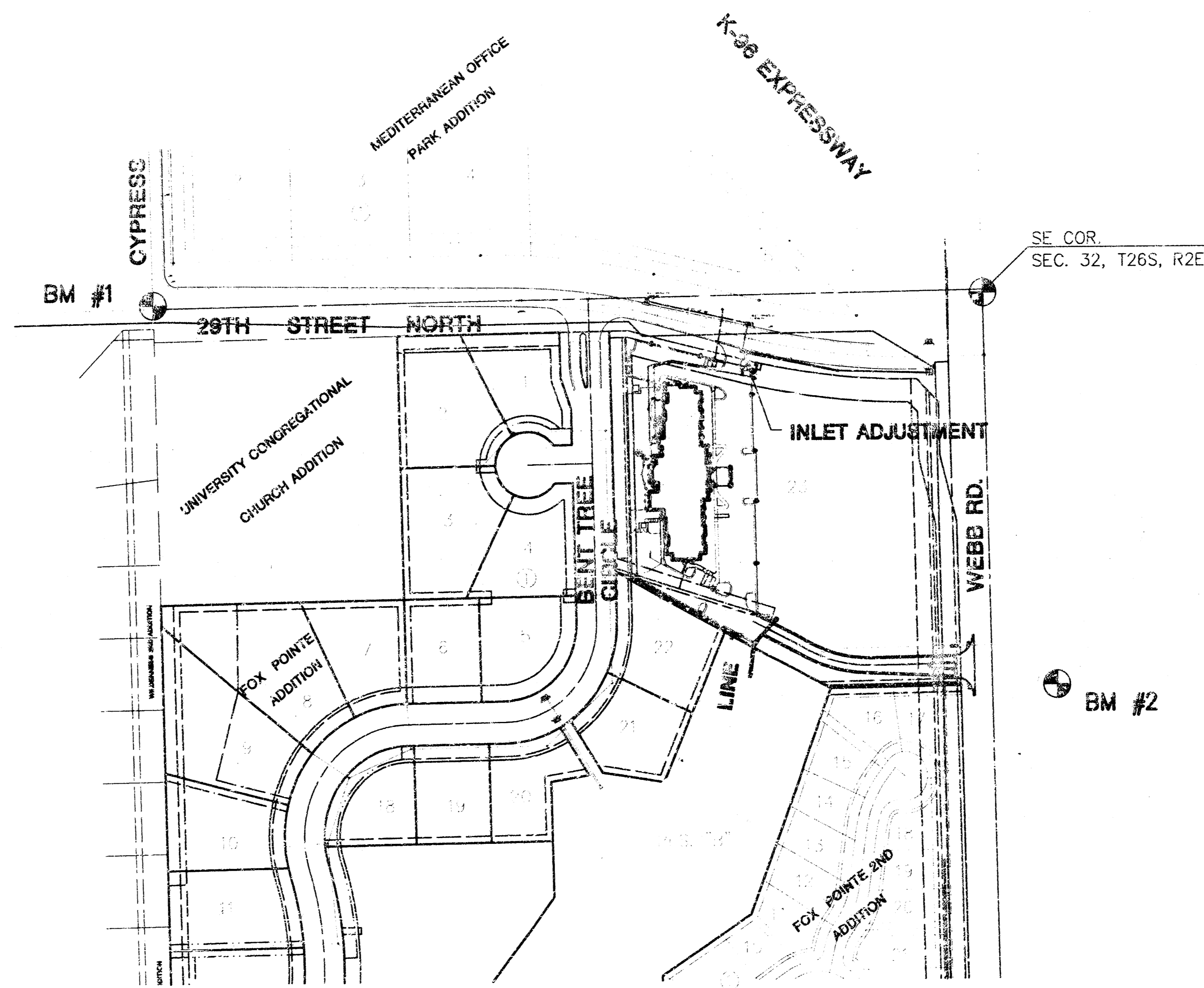
GENERAL NOTES

1. THE TOPS OF INLETS AND MANHOLES AS NOTED ON THE PLANS MAY VARY SO AS TO MEET PROPOSED TOP OF CURB ELEVATIONS OR PAVEMENT ELEVATIONS. THE FIELD ENGINEER SHALL LOCATE INLETS AND MANHOLES WITH REFERENCE TO PROPOSED PAVING PLANS OF THE PERTINENT STREETS.
2. ALL CONCRETE SHALL BE STANDARD PAVING MIX UNLESS OTHERWISE NOTED.
3. THE CONTRACTOR SHALL BE RESPONSIBLE FOR PRESERVING PROPERTY IRONS. THE CONTRACTOR SHALL BE REQUIRED TO RE-ESTABLISH ANY PROPERTY IRONS WHICH ARE DAMAGED OR DESTROYED BY HIS CONSTRUCTION OPERATIONS. SUCH IRONS SHALL BE RE-ESTABLISHED BY A LICENSED LAND SURVEYOR IN ACCORDANCE WITH STATE LAWS.
4. TREES TO BE REMOVED ARE MARKED \otimes . ALL TREES WHICH IN THE OPINION OF THE FIELD ENGINEER CAN BE SAVED, SHALL BE SAVED.
5. CONTRACTOR SHALL NOTIFY UTILITY COMPANIES OF CONSTRUCTION SCHEDULING.
6. EXISTING UTILITIES AND THEIR LOCATIONS, AS SHOWN ON THE PLANS REPRESENT THE BEST INFORMATION OBTAINABLE FOR DESIGN. LOCATION INFORMATION HAS BEEN OBTAINED FROM THE VARIOUS COMPANIES AND IS EITHER FROM COMPANY UTILITY DRAWINGS OR COMPANY PROVIDED FIELD LOCATIONS. THE PLAN LOCATIONS SHOWN ARE NOT GUARANTEED. ADDITIONAL EXISTING UTILITIES MAY ALSO BE ENCOUNTERED.
7. CONTRACTOR WILL BE REQUIRED TO PROVIDE A MINIMUM ADVANCE NOTICE OF FORTY-EIGHT (48) HOURS TO UTILITY COMPANIES TO STARTING ANY EXCAVATION AS FOLLOWS:
 KANSAS ONE-CALL 887-2470
 OR 687-2470 (LOCAL WICHITA)
 THE CONTRACTOR MUST NOTIFY THE FOLLOWING IN CASE OF EMERGENCY:
 CABLEVISION 263-2061
 KG&E (GAS & ELECTRIC) 393-8900
 SOUTHWESTERN BELL TELEPHONE COMPANY 1-800-734-7590
 CITY OF WICHITA WATER & SEWER MAINT. 268-4908
 WILLIAMS NATURAL GAS 524-0491 OR 1-800-324-9696 (AFTER 4 P.M.)
8. RUBBLE FROM THE REMOVAL OF MISCELLANEOUS STRUCTURES AND EXCESS EXCAVATION WHICH IS TO BE WASTED SHALL BE DISPOSED OF ON SITE TO BE PROVIDED BY THE CONTRACTOR. THESE SITES SHALL BE APPROVED BY THE ENGINEER AS TO SUITABILITY, APPEARANCE AND SITE LOCATION. LOCATIONS THAT, IN THE OPINION OF THE ENGINEER, WILL LEAVE AN UNSIGHTLY APPEARANCE WILL NOT BE APPROVED. ALL DISPOSAL SITES MUST BE APPROVED BY THE KANSAS DEPARTMENT OF HEALTH AND ENVIRONMENT. MATERIAL EITHER STOCKPILED OR DISPOSED OF IN A FLOOD PLAIN WOULD REQUIRE A KANSAS STATE BOARD OF AGRICULTURE PERMIT. ANY MATERIAL DUMPED IN WATERS OF THE UNITED STATES OR WETLANDS IS SUBJECT TO U.S. CORPS OF ENGINEERS PERMITTING REGULATIONS. ANY MATERIAL BURIED OR STOCKPILED BEYOND APPROVED CONSTRUCTION LIMITS WOULD REQUIRE ADDITIONAL ARCHAEOLOGICAL INVESTIGATIONS UNLESS BURIED IN A PREVIOUSLY APPROVED BORROW LOCATION.
9. CONTRACTOR SHALL RESEED AND MULCH ALL DISTURBED AREAS. COST SHALL BE CONSIDERED SUBSIDIARY TO SITE RESTORATION.

S 1/4 COR.
 SEC. 32, T26S, R2E



SCALE: 1" = 150'



INDEX TO DRAWINGS

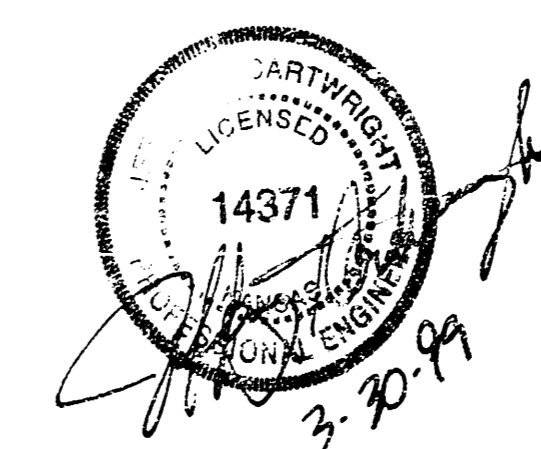
SHEET NO.	DESCRIPTION
1	TITLE SHEET
2	LINE 1
3	INLET & DETAIL
4	DETAILS
5	FINAL PLAT

BENCHMARKS

- BM #1 "□" CUT TOP OF S. CURB 29TH. ST. N. @ C/L OF CYPRESS.
 ELEV. = 222.80
 BM #2 "□" CUT AT S.E. COR. RCBC UNDER WEBB RD. NEAR N.E. COR. FOX POINTE
 ELEV. = 219.65

BOOKED
 9-15-99
 MEG
 D-435

AS BUILT: 3/30/99



MARRIOTT COURTYARD
 PROJECT NAME
STORM WATER PLANS
 SHEET TITLE

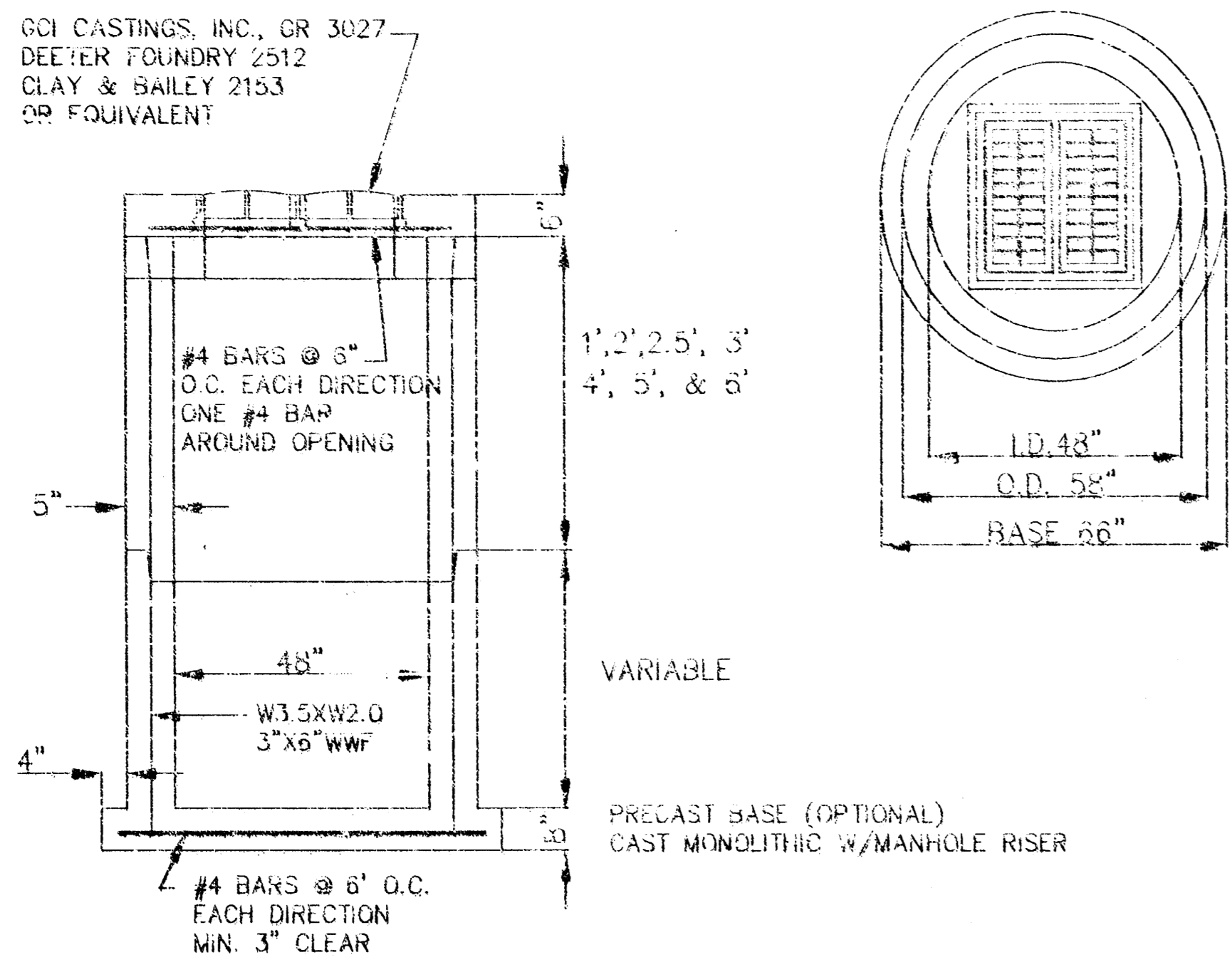
MID-KANSAS ENGINEERING CONSULTANTS, INC.
 411 N WEBB ROAD
 WICHITA, KS. 67206
 316-684-9600

JTC DESIGN BY:	JAC DRAWN BY:	JTC CHECKED BY:
NOVEMBER 1998 DATE	98108_DT JOB NO.	1 5

MARRIOTT COURTYARD
STORM SEWER
LINE 1

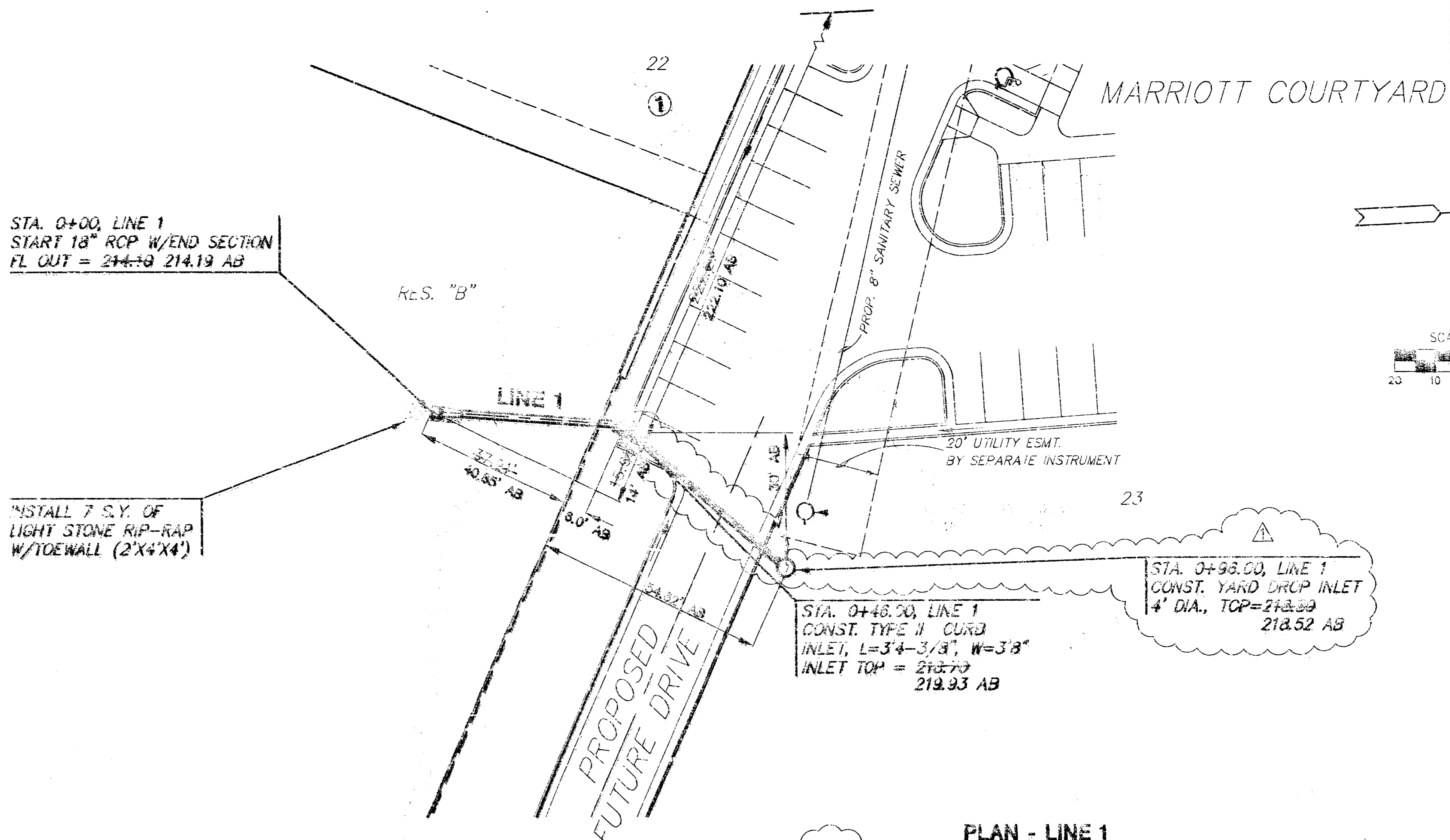
1. ALL MANHOLES MEET CURRENT ASTM C478 SPECIFICATIONS
2. ALL REINFORCING IS GRADE 60
3. JOINTS BETWEEN MANHOLE SECTIONS TO BE SEALED WITH TWO WRAPS OF EXTRUDED BUTYL RUBBER JOINT MASTIC MEETING CITY OF WICHITA TYPE P MANHOLE SPECIFICATIONS.

GOI CASTINGS, INC. OR 3027
DEEYER FOUNDRY 2512
CLAY & BAILEY 2153
OR EQUIVALENT



STA. 0+00, LINE 1
START 18" RCP W/END SECTION
FL OUT = 214.19 AB

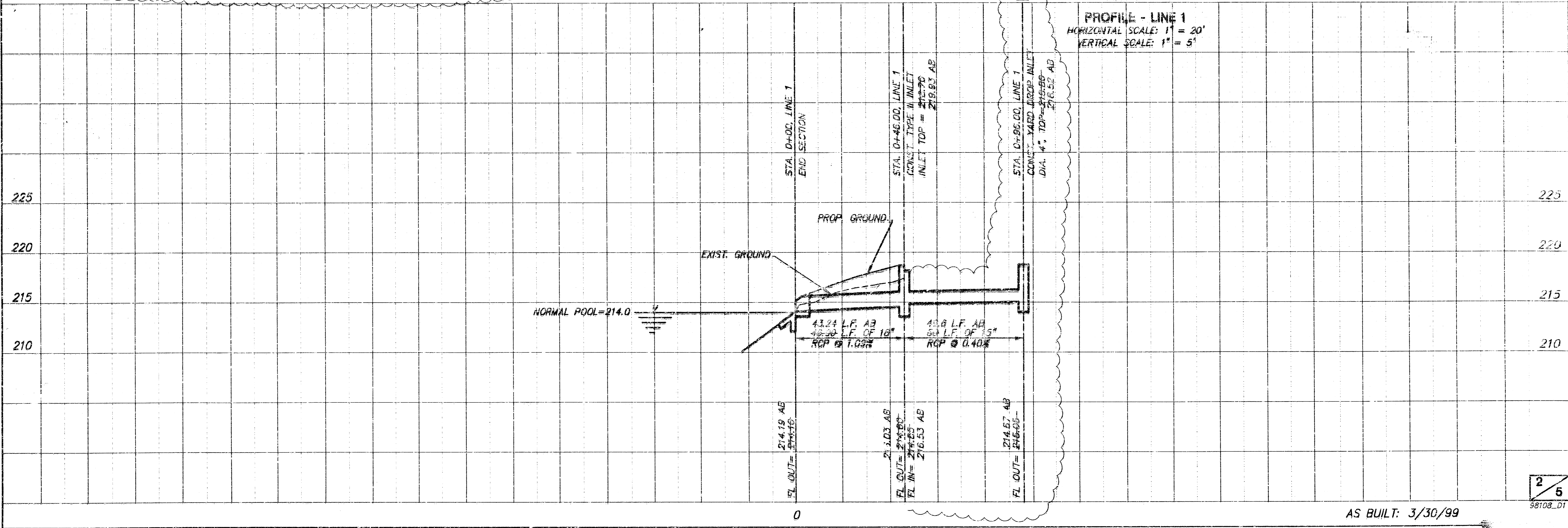
INSTALL 7 S.Y. OF
LIGHT STONE RIP-RAP
W/TOWALL (2'X4'X4')



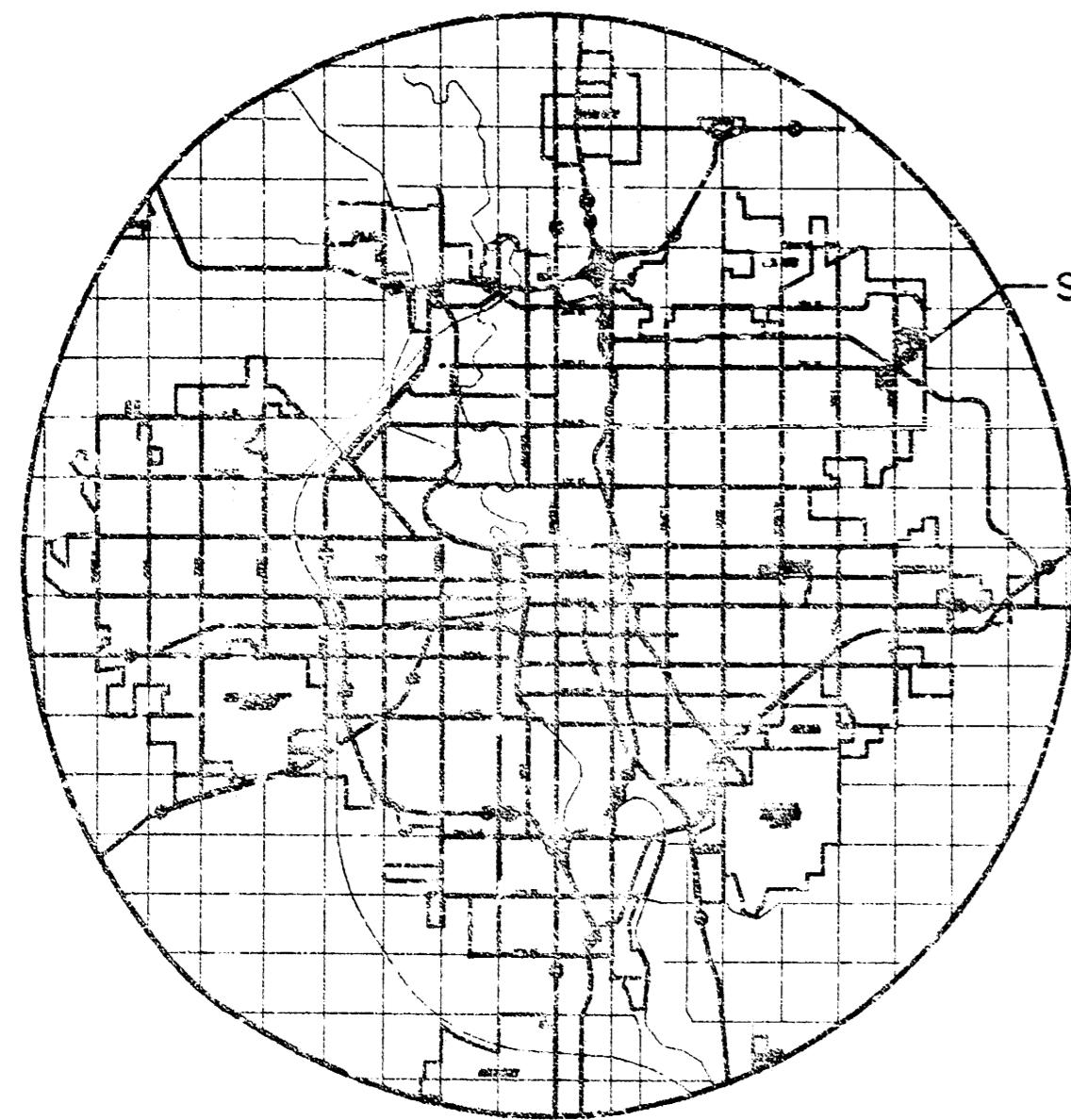
PLAN - LINE 1
SCALE: 1" = 20'

REVIS 12-18-98 W/CHANGE ORDER

PROFILE - LINE 1
HORIZONTAL SCALE: 1" = 20'
VERTICAL SCALE: 1" = 5'



AS BUILT: 3/30/99



LOCATION MAP

PRIVATE STORM WATER PLANS
MARRIOTT COURTYARD
 LOT 23, BLOCK 1, FOX POINTE ADDITION
 PROJECT NO. 884PPS
 CITY OF WICHITA, KANSAS
 MICHAEL E. LINDEBAK, CITY ENGINEER
 INDEX CODE 607861

APPROVED AS NOTED
 BY CITY ENGINEER OF WICHITA

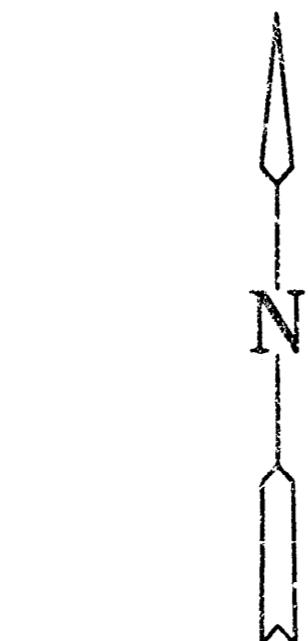
SANITARY SEWERS _____
 STORM SEWERS URH 11/9/98
 DRIVEWAY APPROACHED _____
 WATER MAINS _____
 PAVING _____

GENERAL NOTES

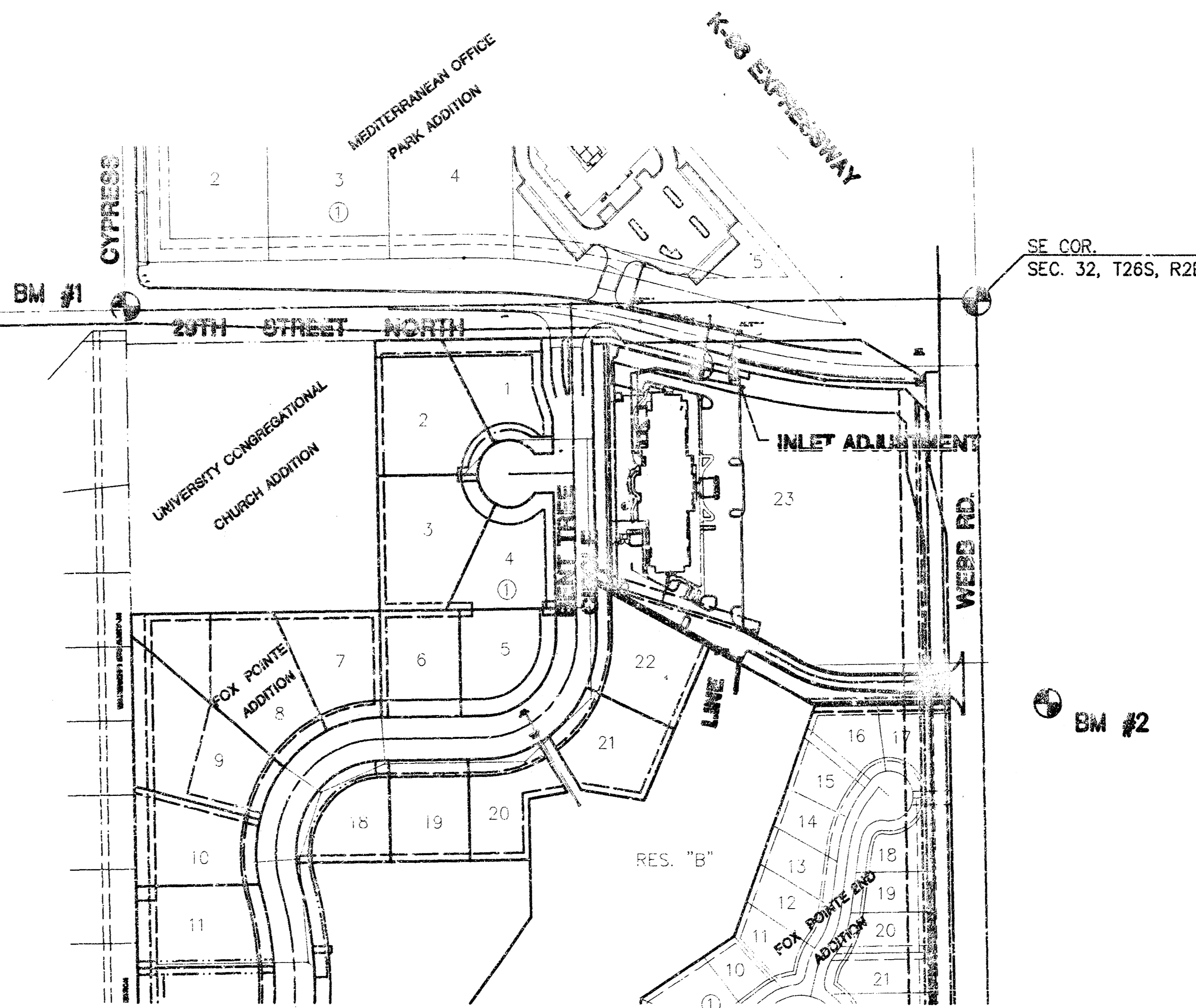
1. THE TOPS OF INLETS AND MANHOLES AS NOTED ON THE PLANS MAY VARY SO AS TO MEET PROPOSED TOP OF CURB ELEVATIONS OR PAVEMENT ELEVATIONS. THE FIELD ENGINEER SHALL LOCATE INLETS AND MANHOLES WITH REFERENCE TO PROPOSED PAVING PLANS OF THE PERTINENT STREETS.
2. ALL CONCRETE SHALL BE STANDARD PAVING MIX UNLESS OTHERWISE NOTED.
3. THE CONTRACTOR SHALL BE RESPONSIBLE FOR PRESERVING PROPERTY IRONS. THE CONTRACTOR SHALL BE REQUIRED TO RE-ESTABLISH ANY PROPERTY IRONS WHICH ARE DAMAGED OR DESTROYED BY HIS CONSTRUCTION OPERATIONS. SUCH IRONS SHALL BE RE-ESTABLISHED BY A LICENSED LAND SURVEYOR IN ACCORDANCE WITH STATE LAWS.
4. TREES TO BE REMOVED ARE MARKED . ALL TREES WHICH IN THE OPINION OF THE FIELD ENGINEER CAN BE SAVED, SHALL BE SAVED.
5. CONTRACTOR SHALL NOTIFY UTILITY COMPANIES OF CONSTRUCTION SCHEDULING.
6. EXISTING UTILITIES AND THEIR LOCATIONS, AS SHOWN ON THE PLANS REPRESENT THE BEST INFORMATION OBTAINABLE FOR DESIGN. LOCATION INFORMATION HAS BEEN OBTAINED FROM THE VARIOUS COMPANIES AND IS EITHER FROM COMPANY UTILITY DRAWINGS OR COMPANY PROVIDED FIELD LOCATIONS. THE PLAN LOCATIONS SHOWN ARE NOT GUARANTEED. ADDITIONAL EXISTING UTILITIES MAY ALSO BE ENCOUNTERED.
7. CONTRACTOR WILL BE REQUIRED TO PROVIDE A MINIMUM ADVANCE NOTICE OF FORTY-EIGHT (48) HOURS TO UTILITY COMPANIES TO STARTING ANY EXCAVATION AS FOLLOWS:
 KANSAS ONE-CALL 687-2470
 OR 687-2470 (LOCAL WICHITA)
 THE CONTRACTOR MUST NOTIFY THE FOLLOWING IN CASE OF EMERGENCY:
 CABLEVISION 263-2061
 K&E (GAS & ELECTRIC) 383-8600
 SOUTHWESTERN BELL TELEPHONE COMPANY 1-800-734-7590
 CITY OF WICHITA WATER & SEWER MAINT. 258-4903
 WILLIAMS NATURAL GAS 524-0491 OR 1-800-324-6696 (AFTER 4 P.M.)
8. RUBBLE FROM THE REMOVAL OF MISCELLANEOUS STRUCTURES AND EXCESS EXCAVATION WHICH IS TO BE WASTED SHALL BE DISPOSED OF ON SITES TO BE PROVIDED BY THE CONTRACTOR. THESE SITES SHALL BE APPROVED BY THE ENGINEER AS TO SUITABILITY, APPEARANCE AND SITE LOCATION. LOCATIONS THAT, IN THE OPINION OF THE ENGINEER, WILL LEAVE AN UNGHITLY APPEARANCE WILL NOT BE APPROVED. ALL DISPOSAL SITES MUST BE APPROVED BY THE KANSAS DEPARTMENT OF HEALTH AND ENVIRONMENT. MATERIAL EITHER STOCKPILED OR DISPOSED OF IN A FLOOD PLAIN WOULD REQUIRE A KANSAS STATE BOARD OF AGRICULTURE PERMIT. ANY MATERIAL DUMPED IN WATERS OF THE UNITED STATES OR WETLANDS IS SUBJECT TO U.S. CORPS OF ENGINEERS PERMITTING REGULATIONS. ANY MATERIAL BURIED OR STOCKPILED BEYOND APPROVED CONSTRUCTION LIMITS WOULD REQUIRE ADDITIONAL ARCHAEOLOGICAL INVESTIGATIONS UNLESS BURIED IN A PREVIOUSLY APPROVED BORROW LOCATION.
9. CONTRACTOR SHALL RESEED AND MULCH ALL DISTURBED AREAS. COST SHALL BE CONSIDERED SUBSIDIARY TO SITE RESTORATION.

S 1/4 COR.
 SEC. 32, T26S, R2E

SE COR.
 SEC. 32, T26S, R2E



SCALE: 1" = 150'



NOTE TO CONTRACTOR
 INSPECTION AND TESTING FOR THIS PROJECT IS TO BE PROVIDED BY A LICENSED CONSULTING ENGINEERING FIRM UNDER CONTRACT WITH THE OWNER/DEVELOPER. SAID INSPECTION TO BE IN ACCORDANCE WITH THE CITY OF WICHITA STANDARD CONSTRUCTION ENGINEERING PRACTICES AND CERTIFIED BY A LICENSED PROFESSIONAL ENGINEER. NO WORK SHALL BE PERFORMED IN DEDICATED EASEMENTS OR THE PUBLIC RIGHT-OF-WAY BY THE CONTRACTOR WITHOUT SUCH INSPECTION, NOR SHALL ANY WORK BE COMMENCED IN DEDICATED EASEMENTS OR PUBLIC RIGHT-OF-WAY WITHOUT WRITTEN AUTHORIZATION BY THE CITY ENGINEER.

INDEX TO DRAWINGS

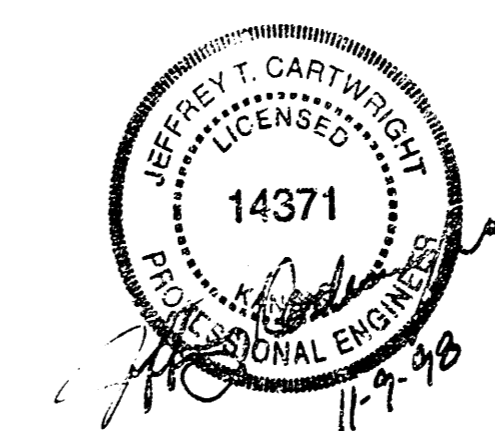
SHEET NO.	DESCRIPTION
1	TITLE SHEET
2	LINE 1
3	INLET & DETAIL
4	DETAILS
5	FINAL PLAT

BENCHMARKS

- BM #1 "C" CUT TOP OF S. CURB 29TH ST. N. @ C/L OF CYPRESS.
 ELEV. = 222.80
 BM #2 "C" CUT AT S.E. COR. RBCB UNDER WEBB RD. NEAR N.E. COR. FOX POINTE
 ELEV. = 219.65

P:\CITY\PROJECTS\884PPS\884PPS.DWG 11/9/98 10:00:30 1998

P:\CITY\PROJECTS\884PPS\884PPS.DWG



MARRIOTT COURTYARD
 PROJECT NAME

STORM WATER PLANS
 SHEET TITLE

MID-KANSAS ENGINEERING CONSULTANTS, INC.
 411 N WEBB ROAD
 WICHITA, KS. 67206
 316-664-9600

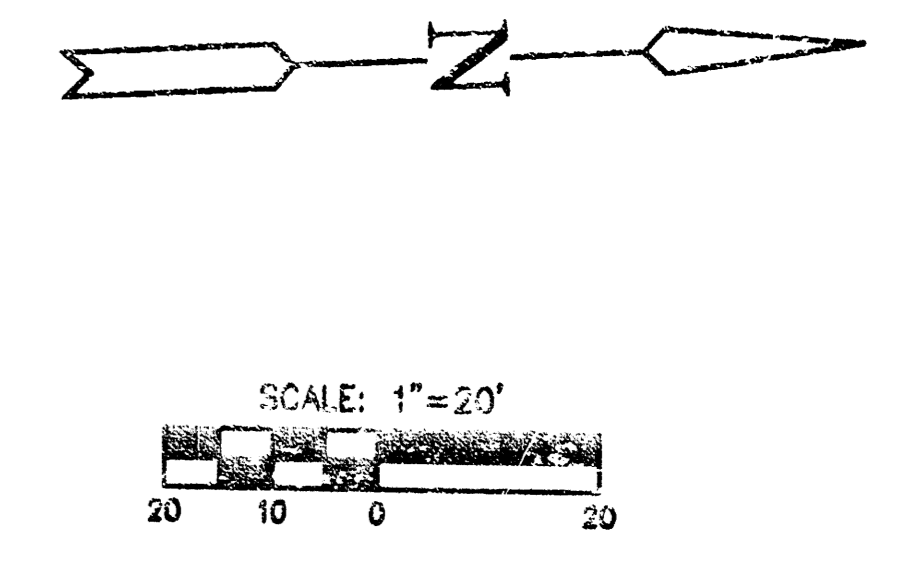
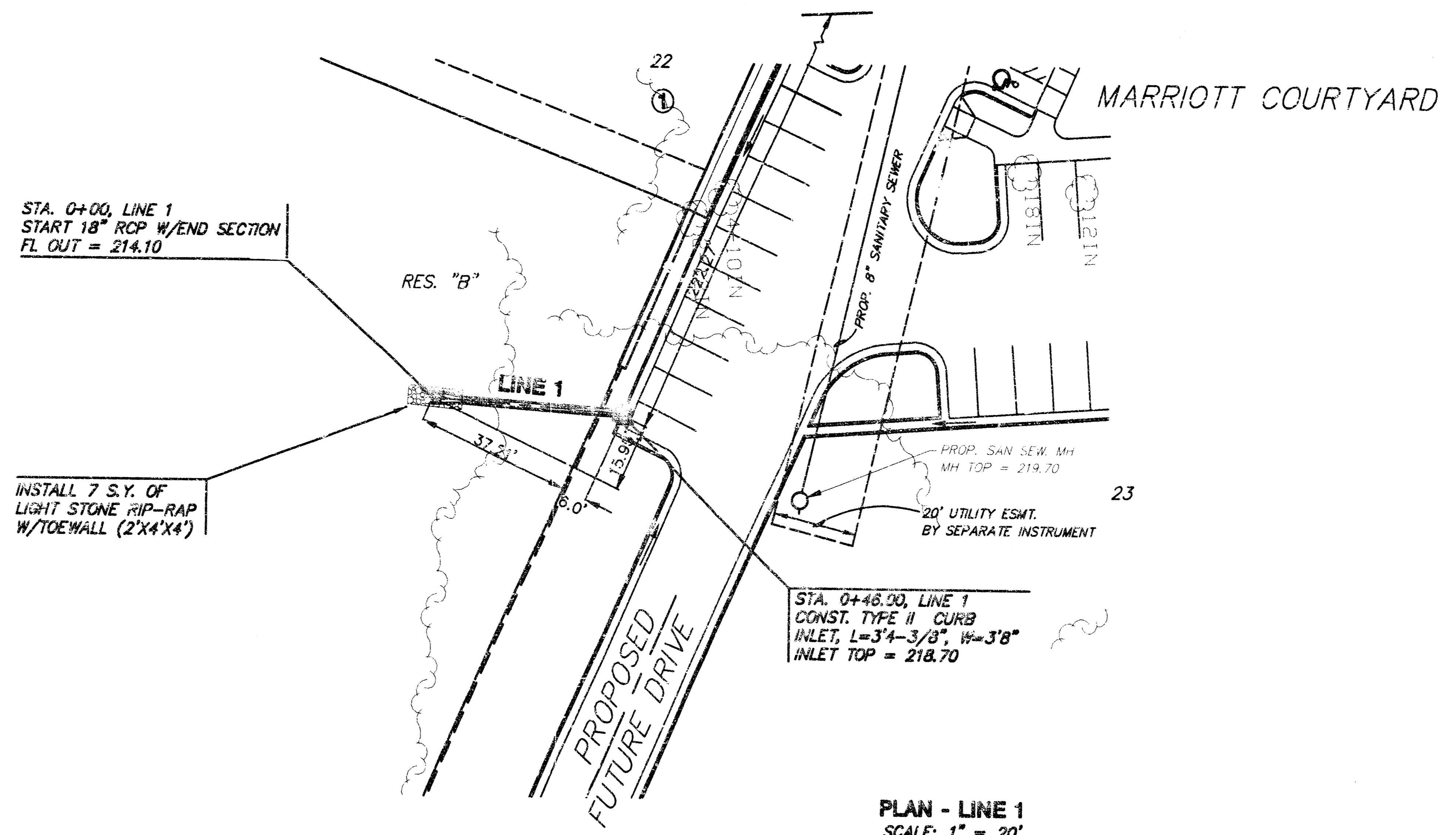
DESIGN BY: JTC
 DRAWN BY: DAC
 CHECKED BY: JTC

NOVEMBER 1998
 DATE

98163_DT
 JOB NO.

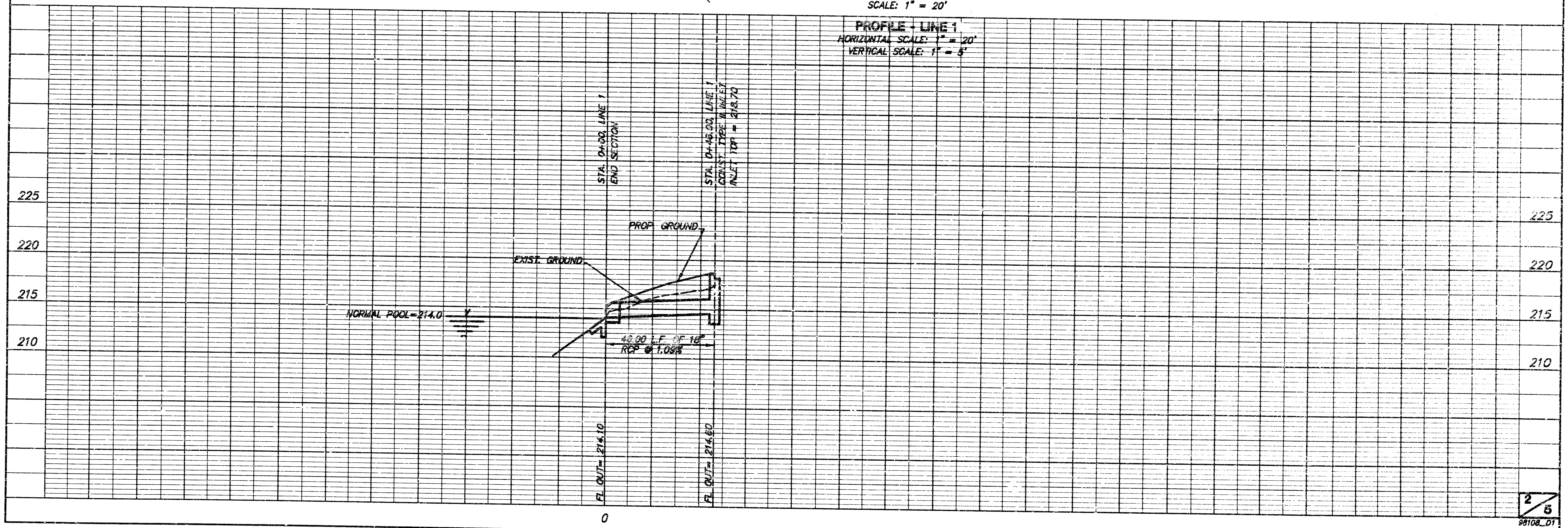
1 / 6
 SHEET/OF

**MARRIOTT COURTYARD
STORM SEWER
LINE 1**

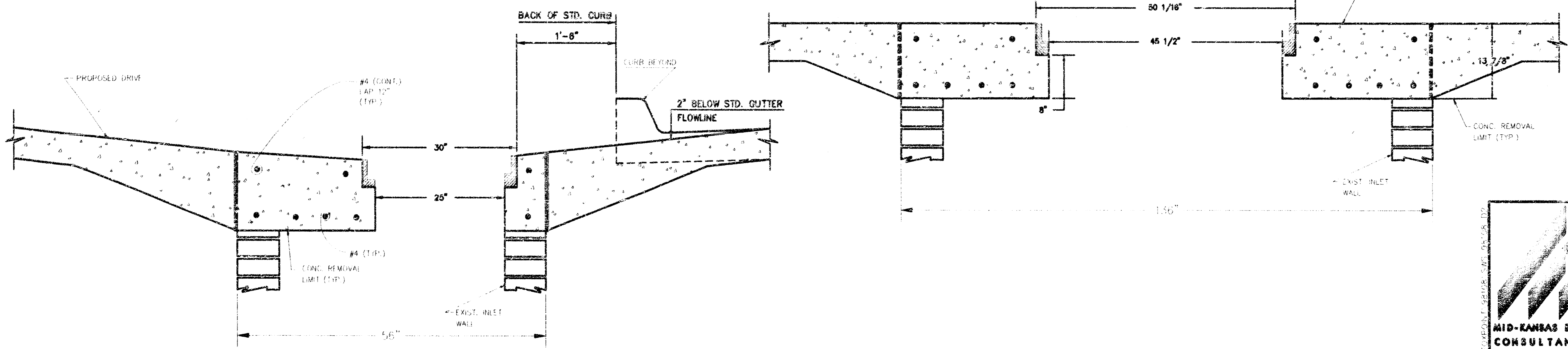
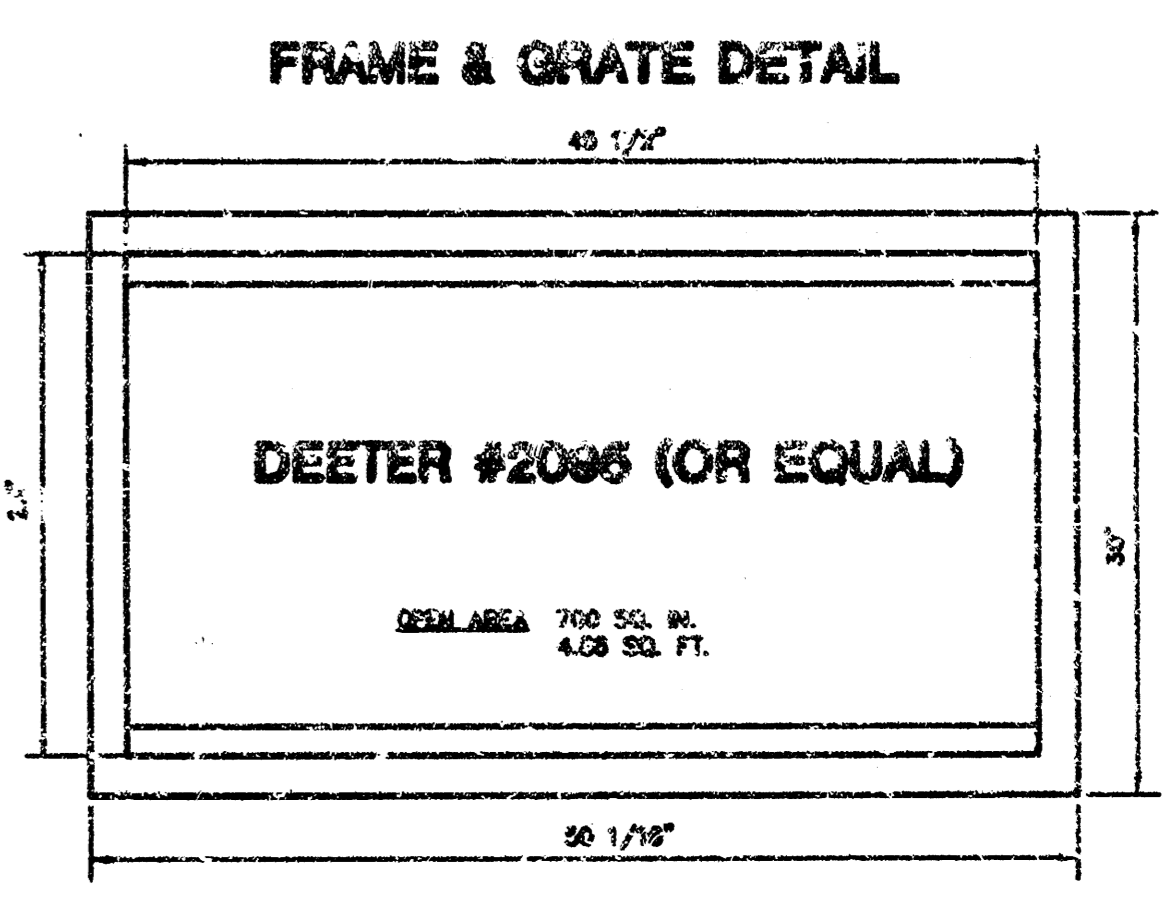
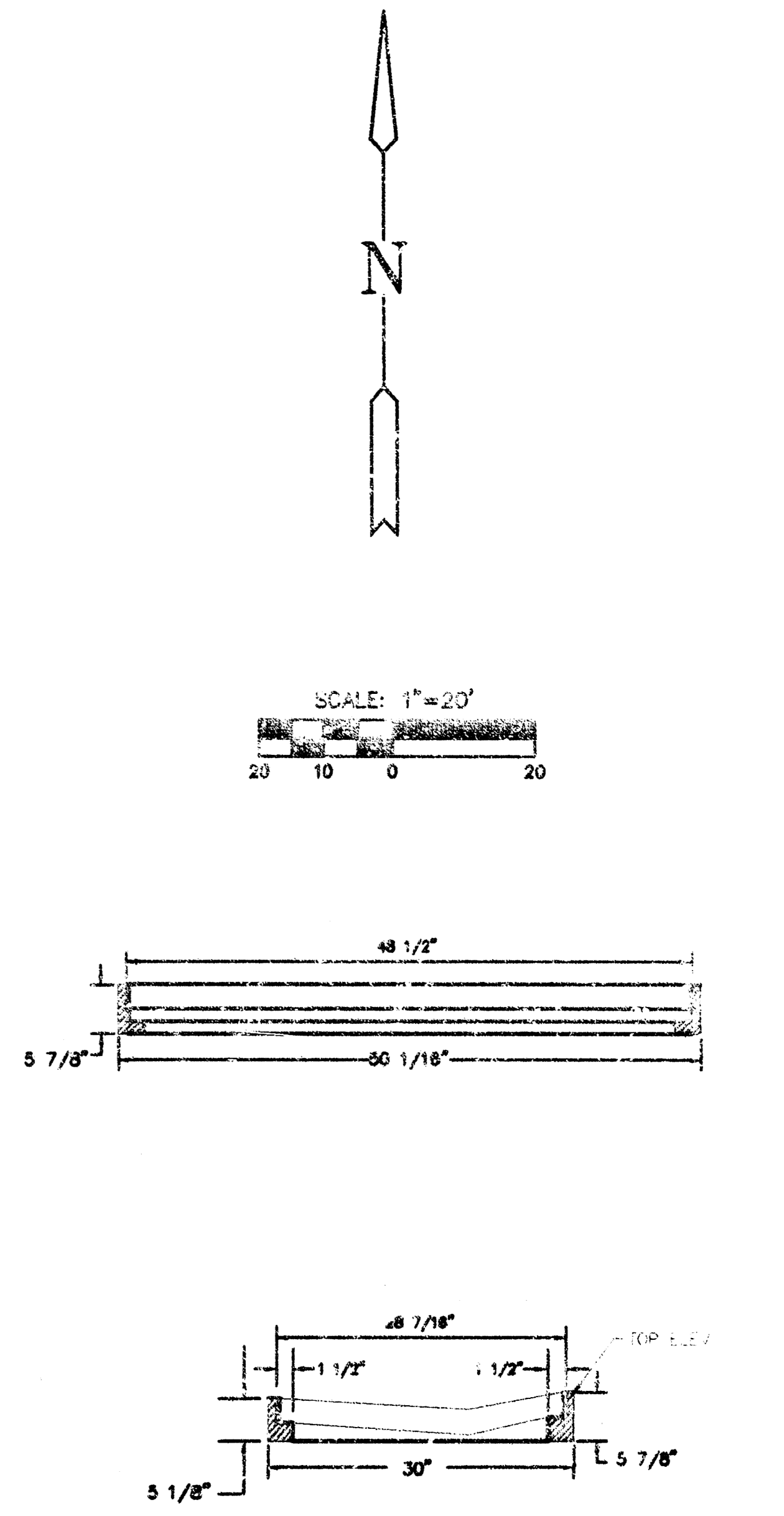
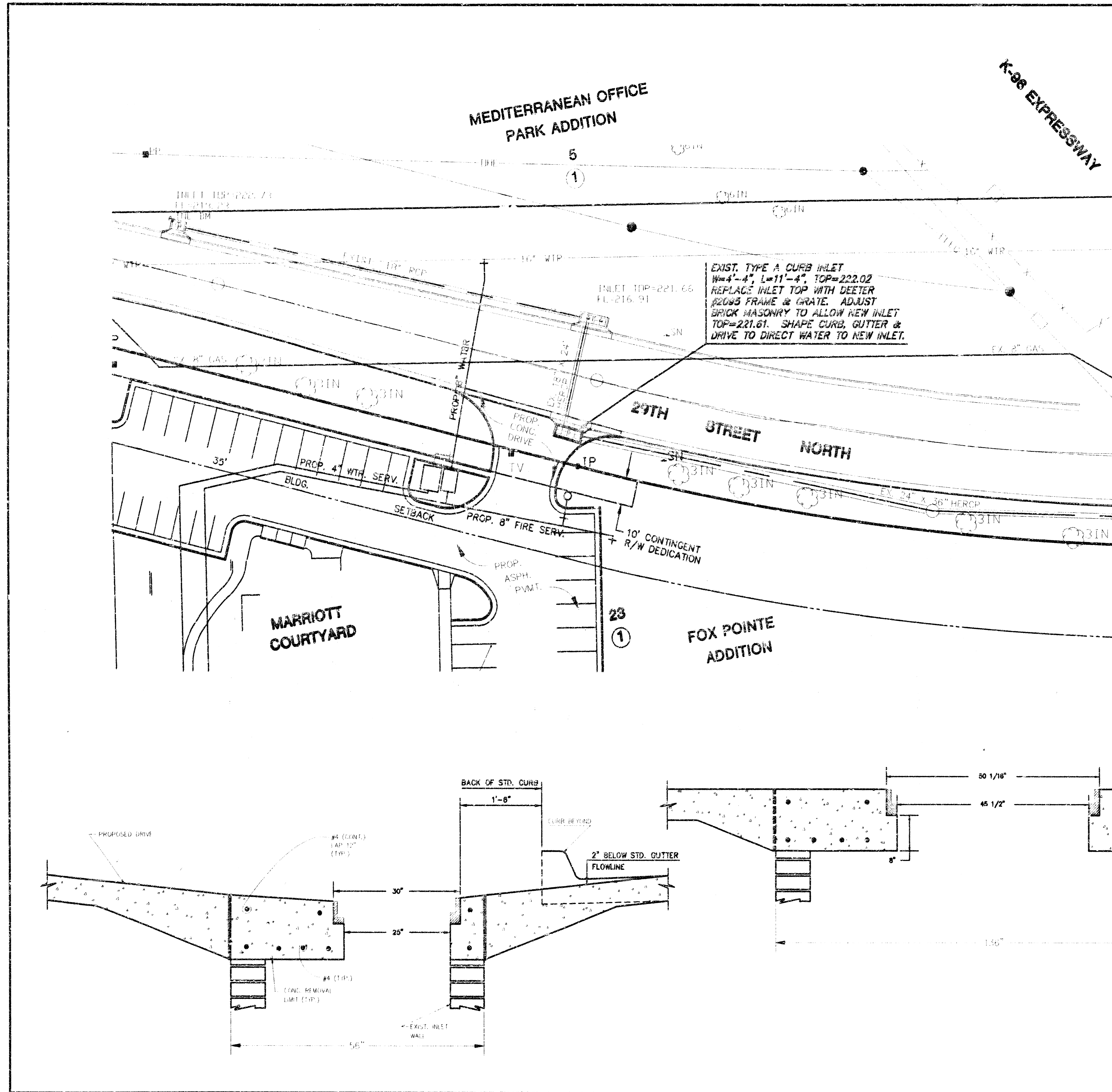


PLAN - LINE 1
SCALE: 1" = 20'

PROFILE - LINE 1
HORIZONTAL SCALE: 1" = 20'
VERTICAL SCALE: 1" = 5'

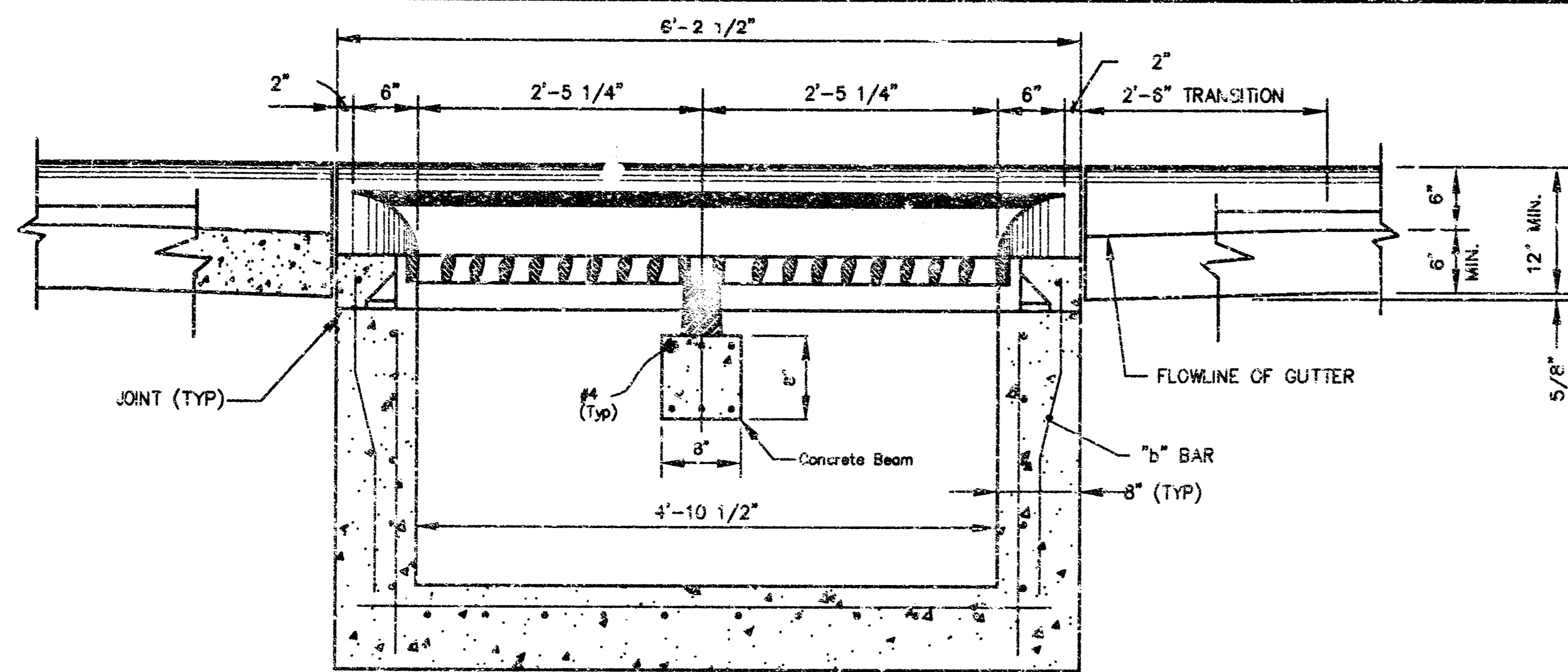


F:\211\1\WORKPOINT\98108\S&S\98108_01.DWG, Mon Nov 09 10:01:23 1998

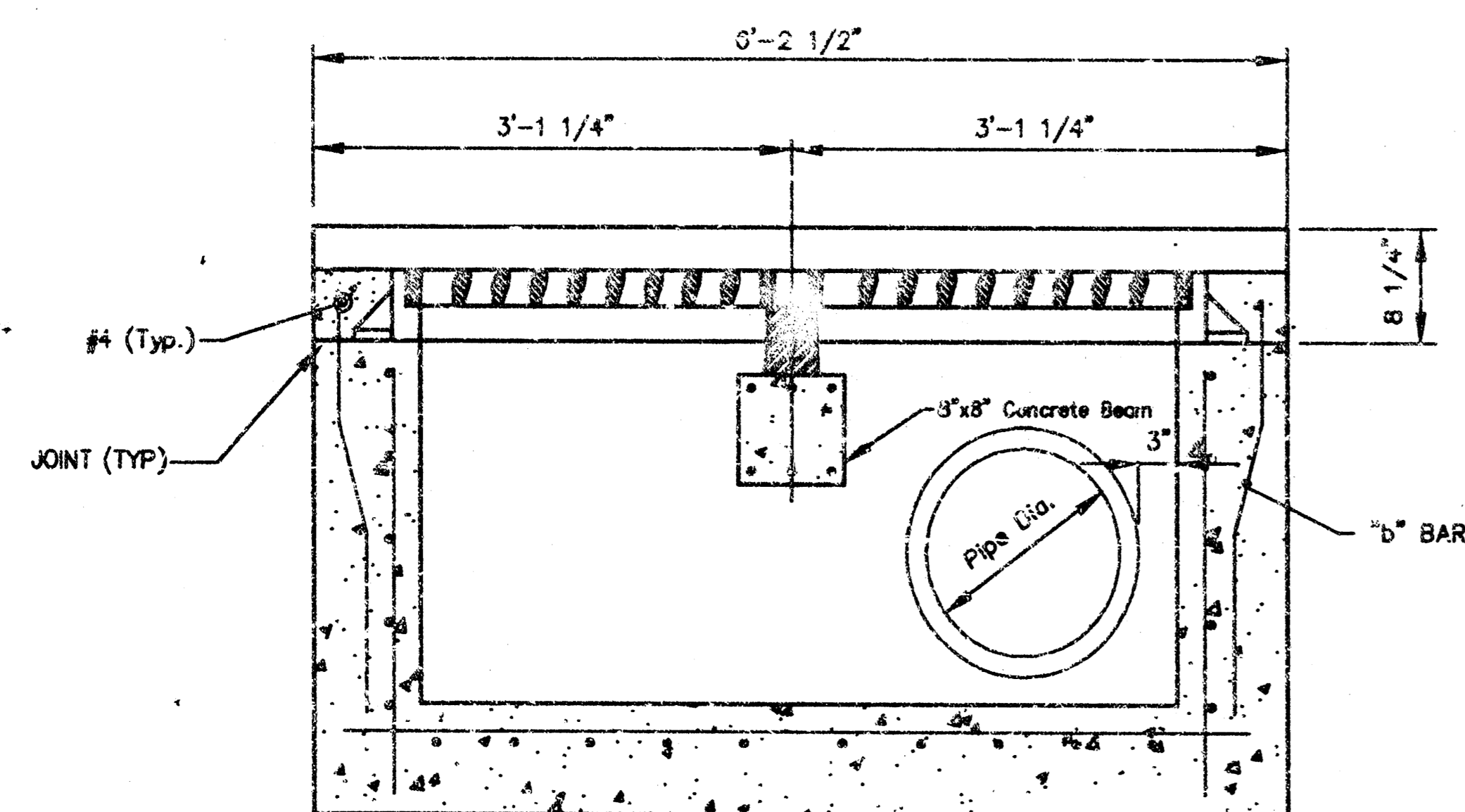


P:\CIVIL\PROJECTS\URBAN\DESIGN\36100.DWG: MCH 13 09 10 02 33 1936

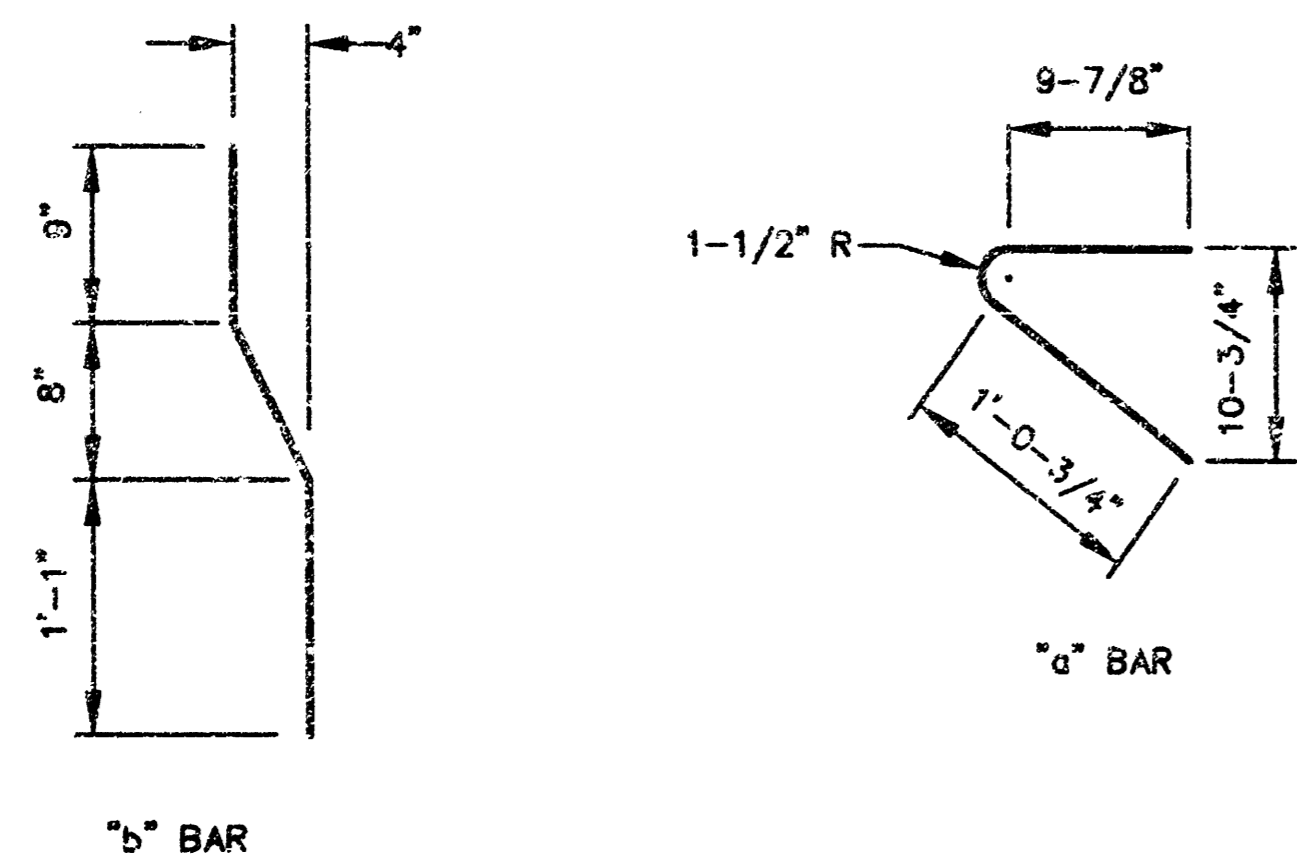
<p>MID-KANSAS ENGINEERING CONSULTANTS, INC. 411 N. WEBB ROAD WICHITA, KS. 67204 316-684-9600</p>	MARRIOTT COURTYARD		
	PROJECT NAME		
	INLET PLAN & DETAIL		
	SHEET TITLE		
DESIGN BY:	DAC	DRAWN BY:	JTC
NOVEMBER 1998	98108	CHECKED BY:	3 / 6
RATE	108 NO.	DATE	10/27/98



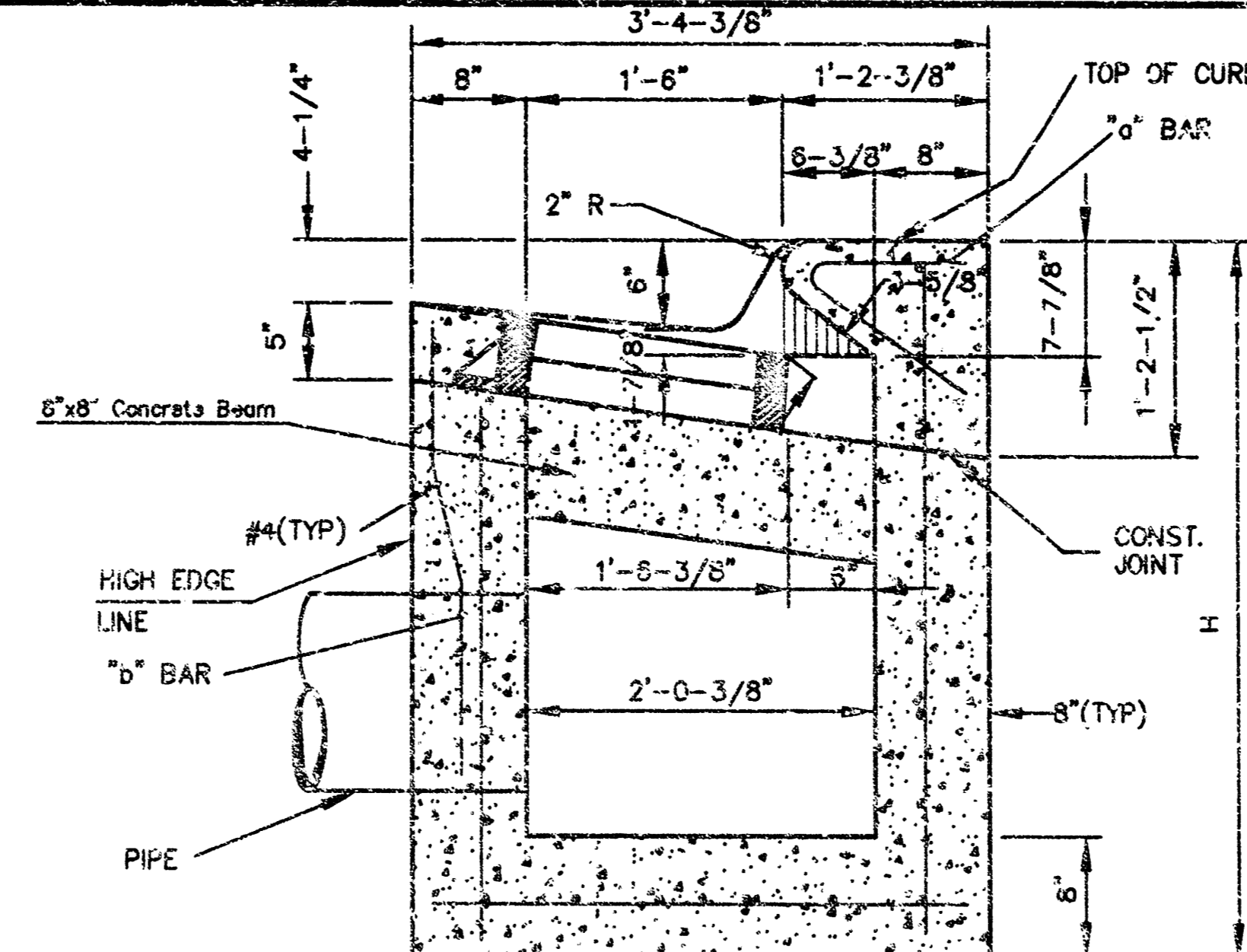
SECTION C - C



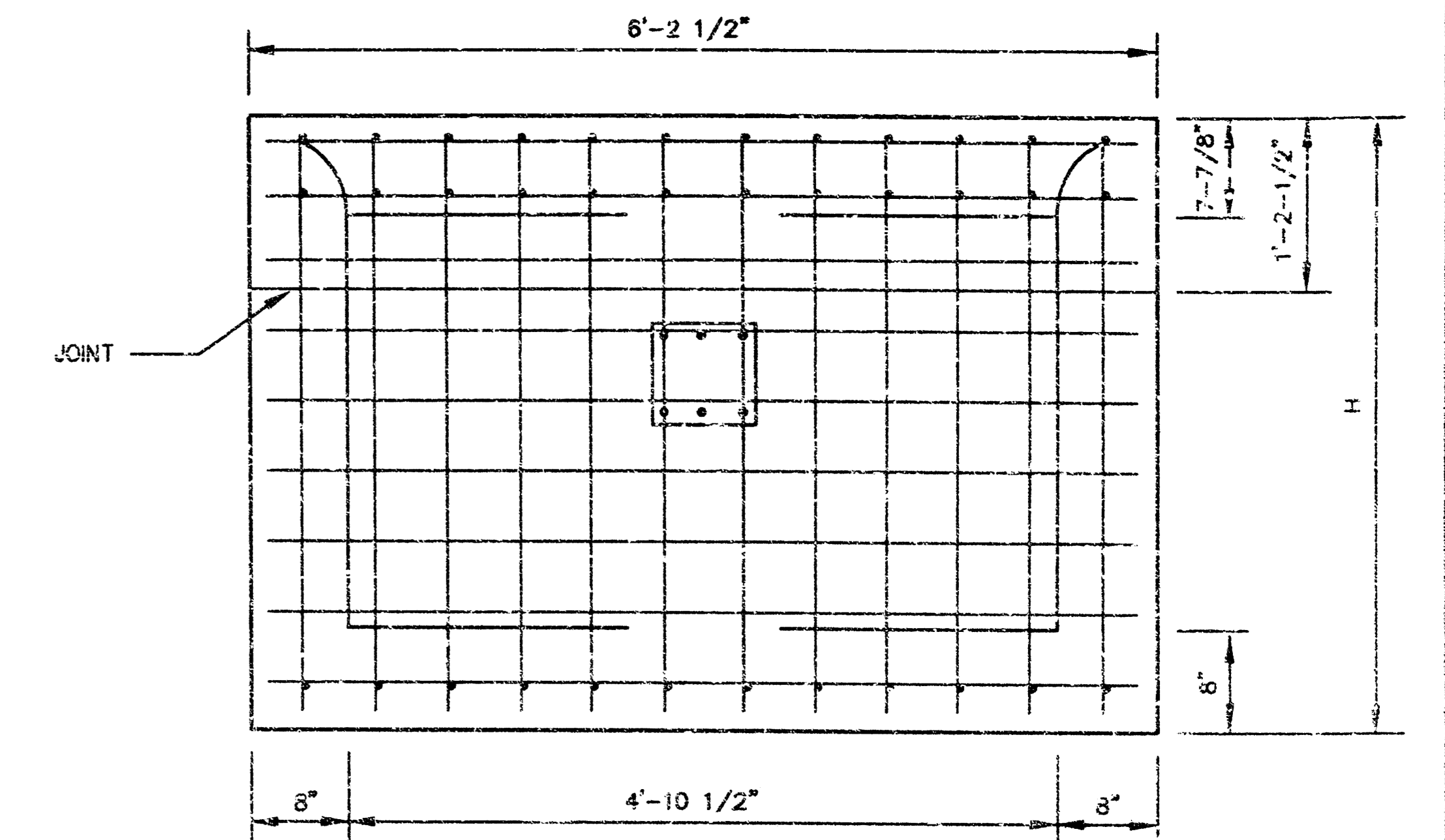
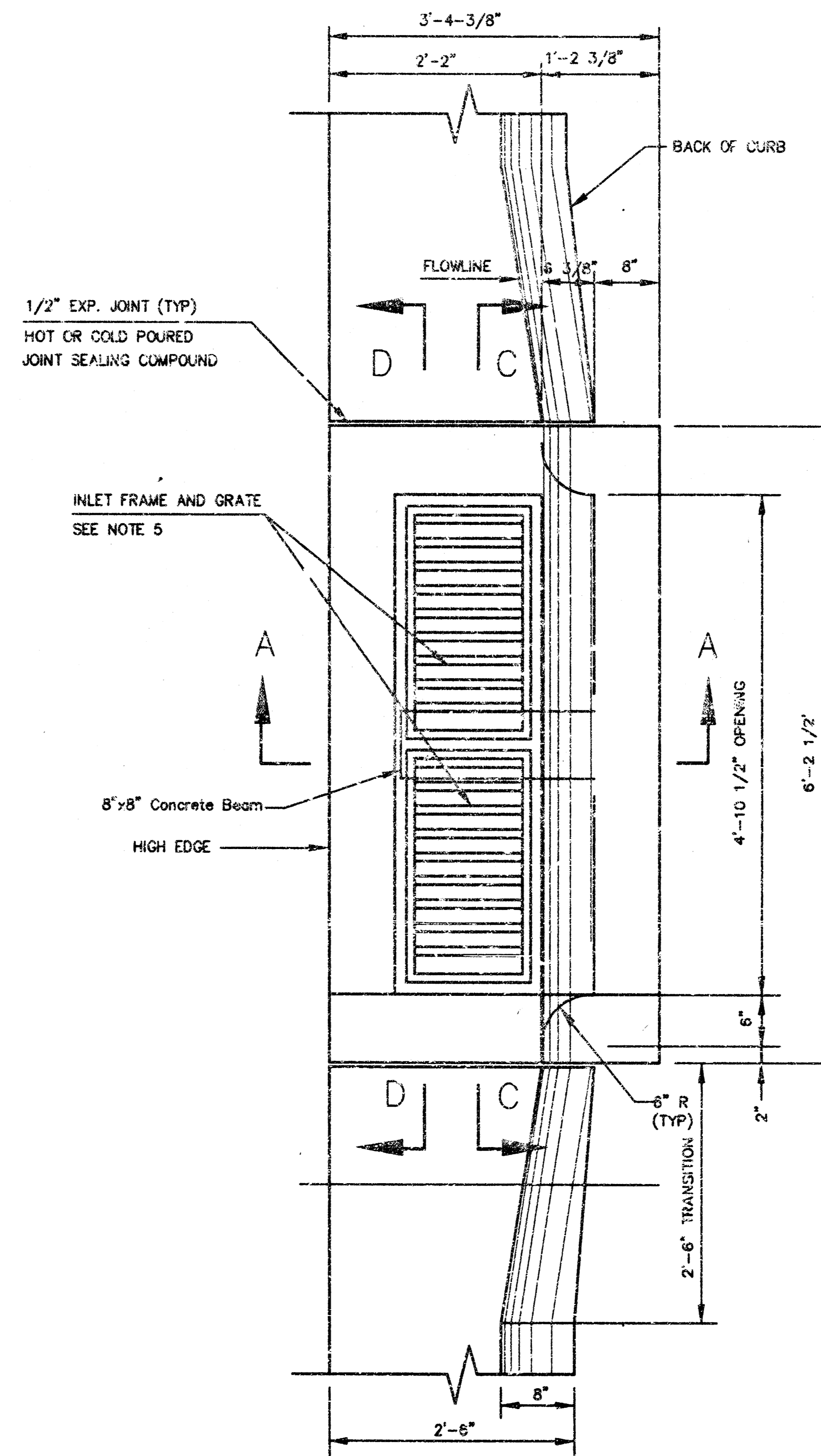
SECTION D - D



BENDING DIAGRAM



SECTION A - A



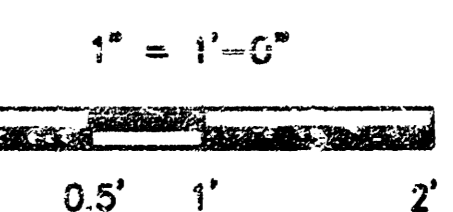
REBAR SIZES, SPACING, AND CLEARANCES PER NOTE 3.

REAR WALL

GENERAL NOTES

1. USE THE CONCRETE MIX SPECIFIED FOR THE CITY OF WICHITA CONCRETE PAVEMENT THROUGHOUT. ALL EXPOSED EDGES SHALL BE FINISHED WITH AN EDGING TOOL.
2. INLET INVERT SHALL BE SHAPED WITH 8 SACK MIX CONCRETE TO CREATE FLOW CHANNELS AND TO INCREASE HYDRAULIC EFFICIENCY SUCH THAT THE INLET WILL BE SELF CLEANING BETWEEN ALL INLET AND/OR OUTLET PIPES.
3. ALL BARS ARE #4 WITH 8" SPACING AND SHALL HAVE A MINIMUM CLEARANCE OF 1-1/2" UNLESS OTHERWISE NOTED ON THE PLANS.
4. NO DEDUCTIONS WILL BE MADE IN PAY LENGTH OF CURB, GUTTER, OR CURB AND GUTTER THROUGH THE INLET AREA.
5. USE DEETEK 2441 INLET FRAMES WITH GRATES OR APPROVED EQUAL. INLET FRAMES TO BE PROOF LOAD TESTED TO 40,000 LBS. ON UNSUPPORTED SIDE.
6. REINFORCING BARS SHALL BE CUT OR BENT AROUND PIPES. NO DEDUCTION IN CONCRETE QUANTITIES SHALL BE MADE FOR PIPE OPENINGS.
7. THE VANES OF THE GRATE SHALL BE ORIENTED TO INTERCEPT FLOW FROM THE DIRECTION SHOWN BY FLOW ARROWS ON THE PLANS.
8. SEE PAVEMENT UNDERDRAIN DETAIL SHEET OF _____.

SCALE



KANSAS DEPARTMENT OF TRANSPORTATION	
DETAIL TYPE II	
CURB INLET	
INLET OPENING = 5" x 4'-10 1/2"	
PROJECT 98108	SEDGWICK CO.
MID-KANSAS ENGINEERING CONSULTANTS, INC.	
WICHITA, KANSAS	
DESIGNED BY:	CHECKED BY: LNU
DRAWN BY: MWJ	DATE: OCT. 98 SHEET 4 OF 5

