

STORMWATER SEWER IMPROVEMENTS TO SERVE WEST KELLOGG POWER CENTER

LOT 3

Project Number
868PPS

CITY OF WICHITA, KANSAS
Michael E. Lindebak, P. E., City Engineer

BENCHMARK:

"□" T.C. East end of return
S.E. Corner of Dugan and Taft
Elev. = 115.61

"+" Centerline of both Hoover
and Hendrix Street
Elev. = 115.77

INDEX

1. Cover
2. SWS Line 1
3. SWS Line 2
4. SWS Lines 3 & 4
5. SWS Line 5
6. SWS Line 6

1. Contractor will be required to provide notice to utility companies a minimum of twenty-four (24) hours prior to any excavation, as follows:

Kansas One-Call 687-2470

The Contractor must notify the following in case of an emergency:

Cablevision 262-4270
or 263-2061
K.P.L. Gas Service Company 383-8650
Kansas Gas & Electric Company 383-8600
Peoples Natural Gas 942-5350
or 1-800-303-0357
Southwestern Bell Telephone Company 1-571-2511
City of Wichita Water Department 268-4308
City of Wichita Sewer Department 268-4071

2. Exist. utilities and their locations, as shown on the plans, represent the best information obtainable for design. Location information has been obtained from the various utility companies and is either from company record drawings or company-provided field locations. The Contractor will be required to work around existing utilities which do not conflict with proposed construction.

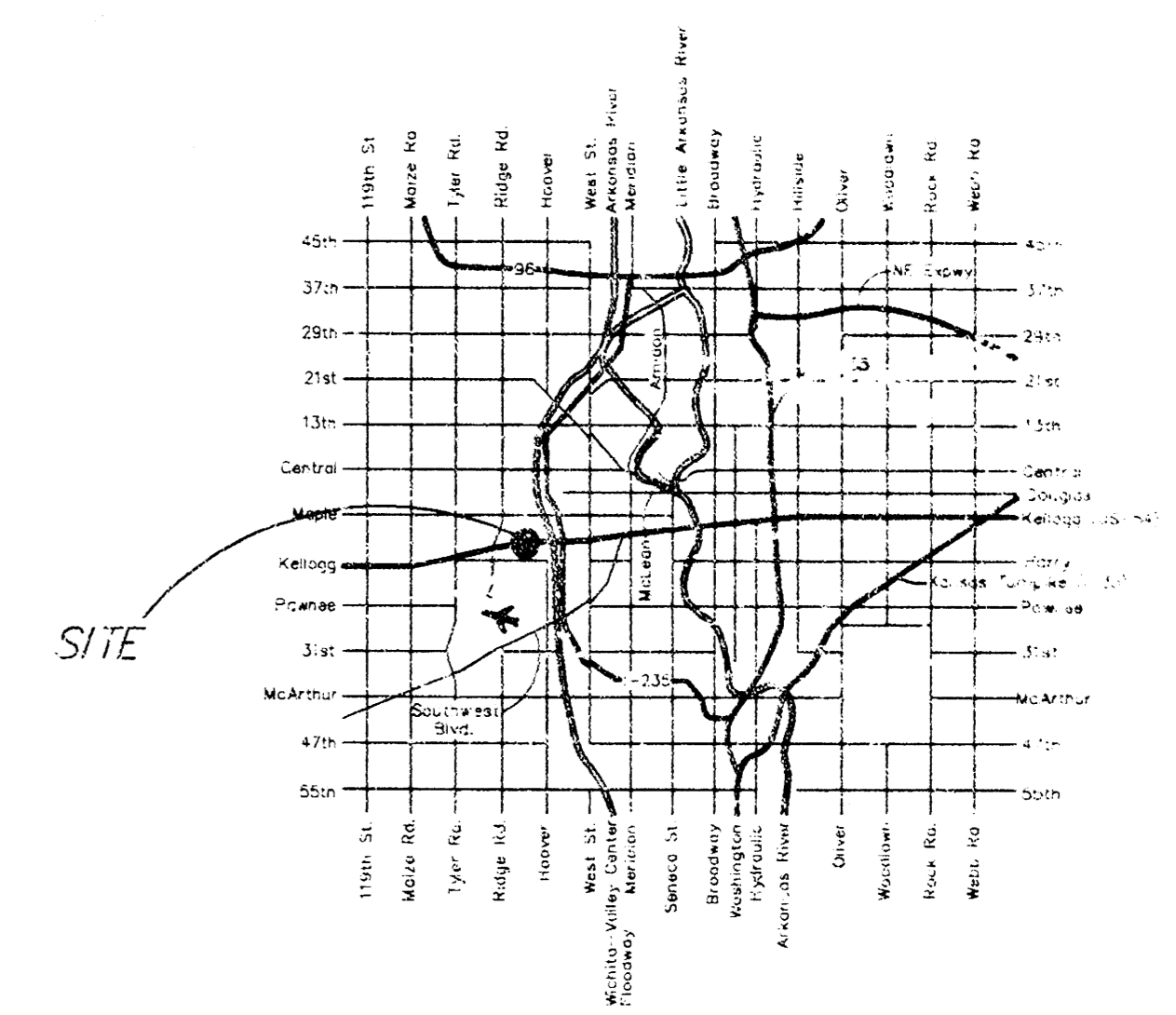
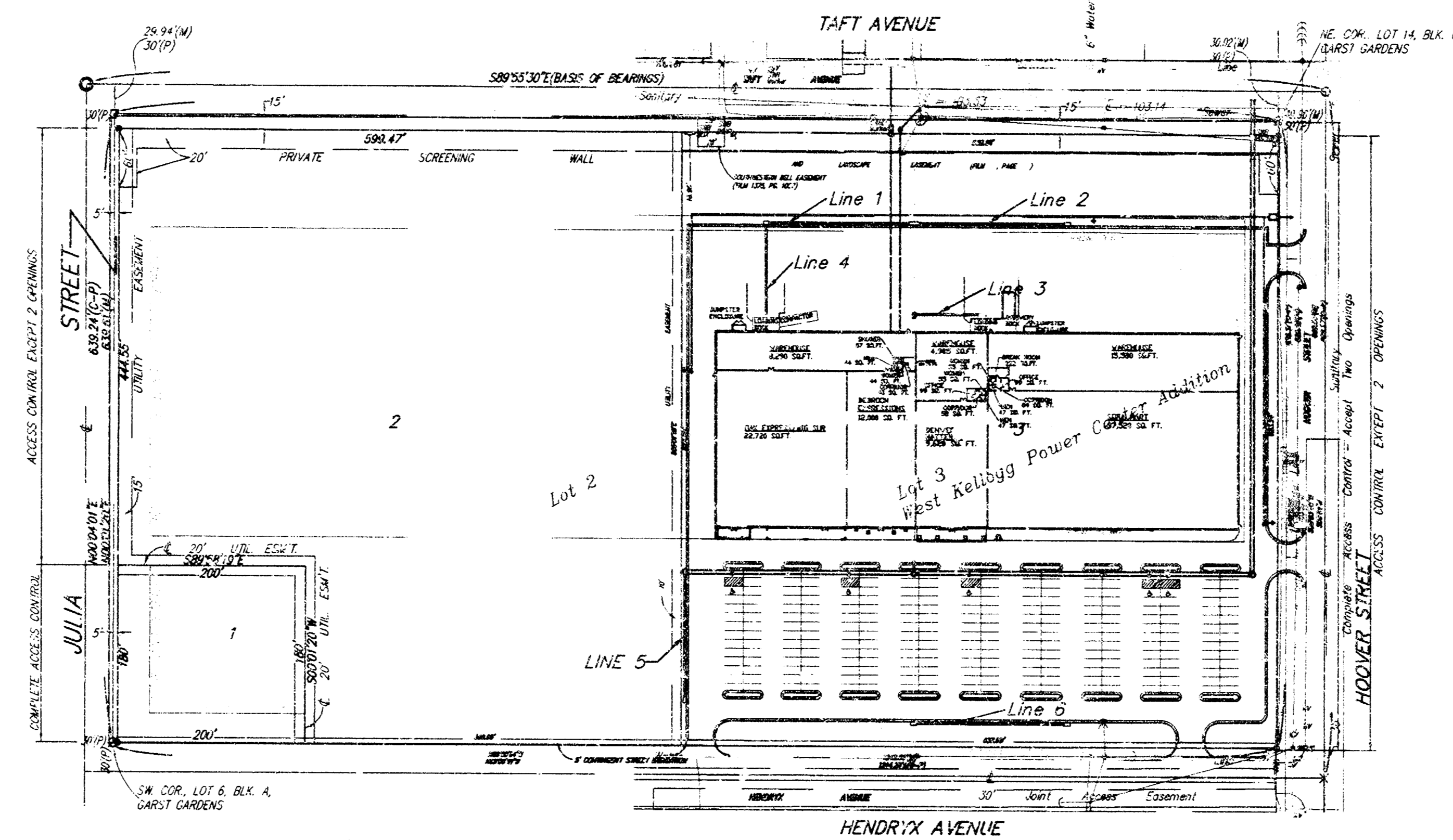
3. The Contractor to verify utility locations prior to construction of this project.

4. Utility service and installation shall be coordinated with the respective utility owners. Contacts are:

KG&E Gas	Shane Price	261-6867
K.G. & E.	Miles Capps	261-6434
Wichita Water	Chuck Steven	268-4555
	Joe Botinelly	268-4908
Southwestern Bell	Jim Tobin	268-2759

5. All areas disturbed by construction operations shall be seeded with rye grass at a rate of 350 lbs/acre immediately following construction in that area. Ground shall be prepared per City of Wichita specifications prior to seeding.

6. All pipe shall be Reinforced Concrete CI IV, Contech Ultra Flo or approved equivalent, unless otherwise noted.



LOCATION MAP

APPROVED AS NOTED BY CITY ENGINEER OF WICHITA
STORM SEWERS VRH 2/19/99

Inspection and testing for this project are to be provided by a Licensed Consulting Engineering Firm under contract with the Owner/Developer. Said inspection is to be in accordance with the City of Wichita standard construction engineering practices and certified by a Licensed Professional Engineer. No work shall be performed in dedicated easements or public right-of-way by the Contractor without such inspection nor shall work be commenced without written authorization by the City Engineer. All construction and materials shall comply with the City of Wichita Specifications and Standards (on file and available in the City Engineer's Office).

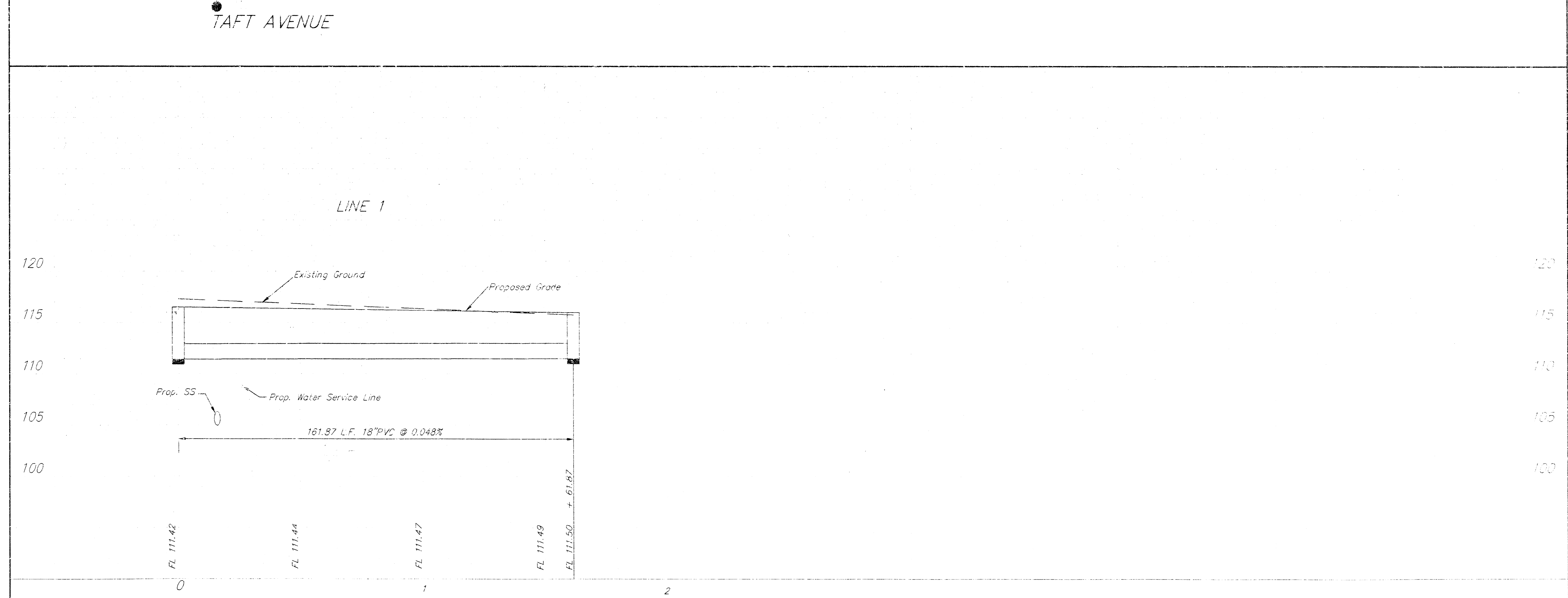
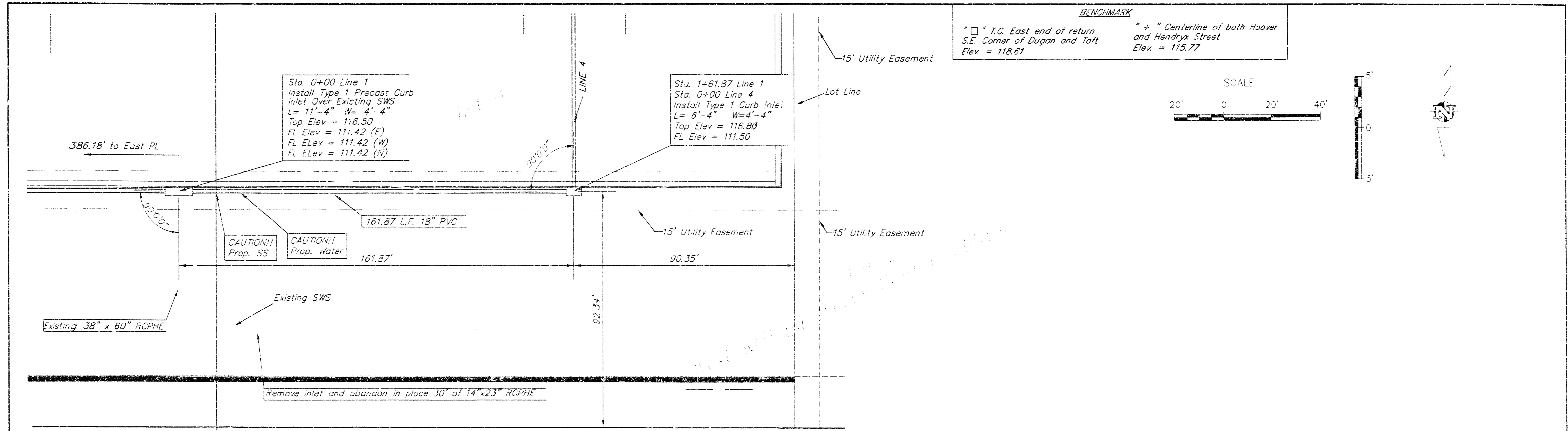
AS-BUILT
Date: 4-15-99
Signed: [Signature]



FILE

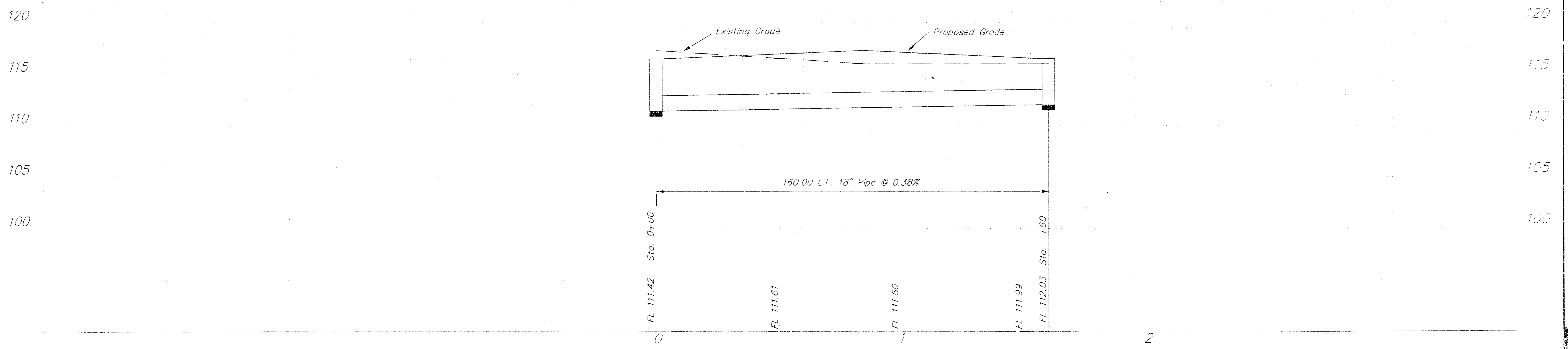
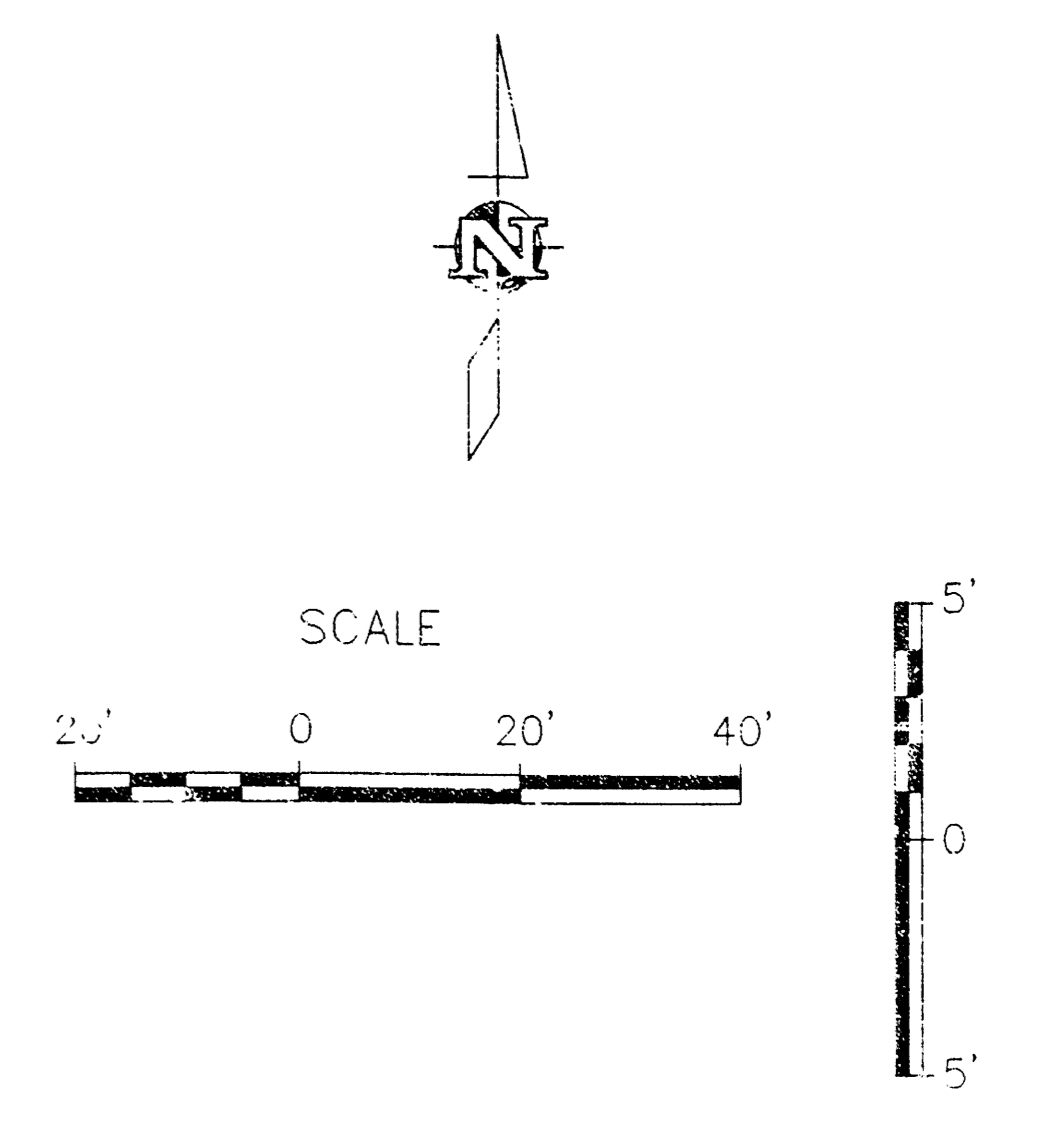
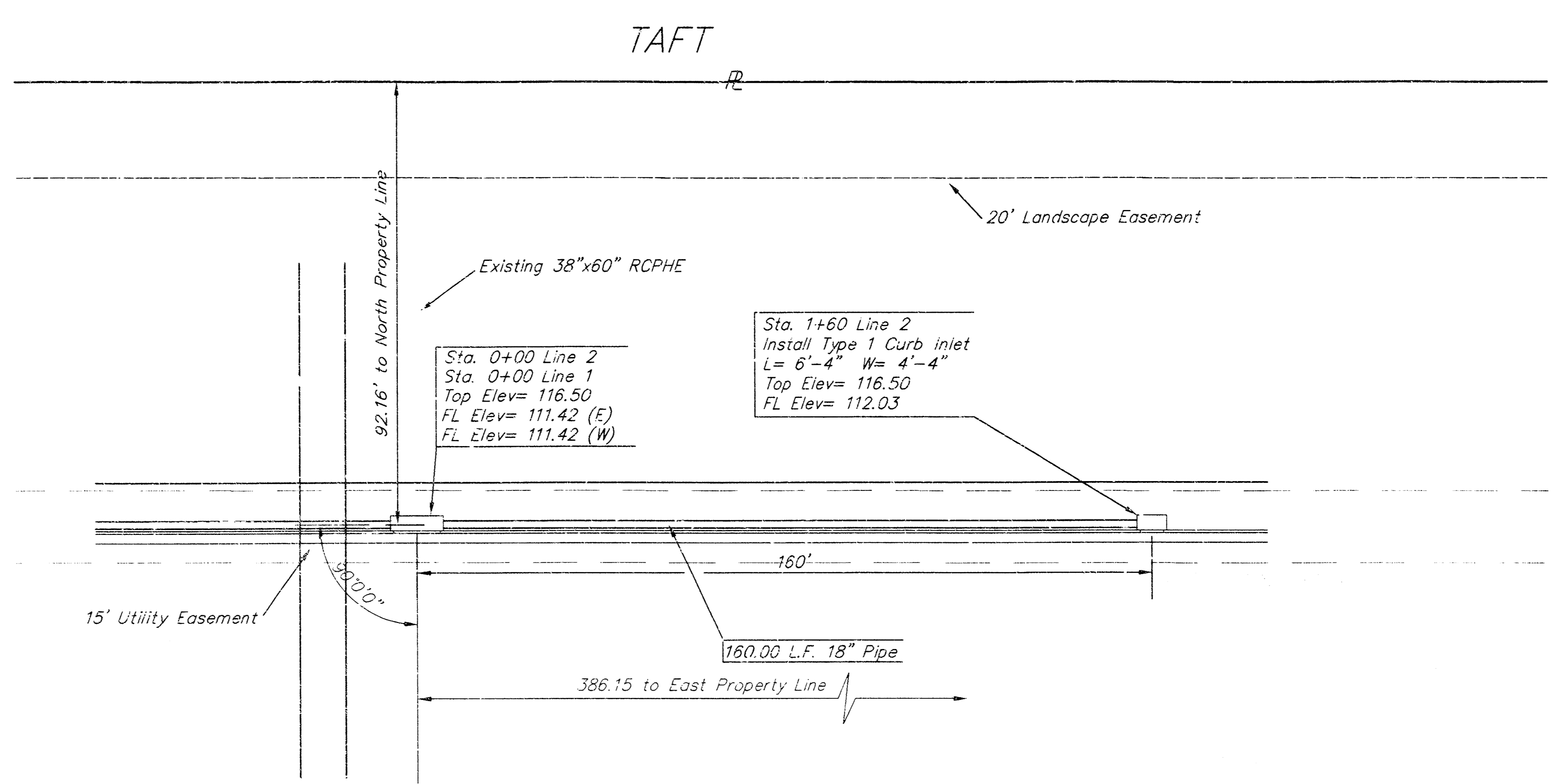
AUSTIN
ENGINEERING SERVICES
P.A.
254 S. Laura, Suite 210 Wichita, KS 67211
315/262-1281 fax 316/262-6773

BOOKED
MAY 9
D-471



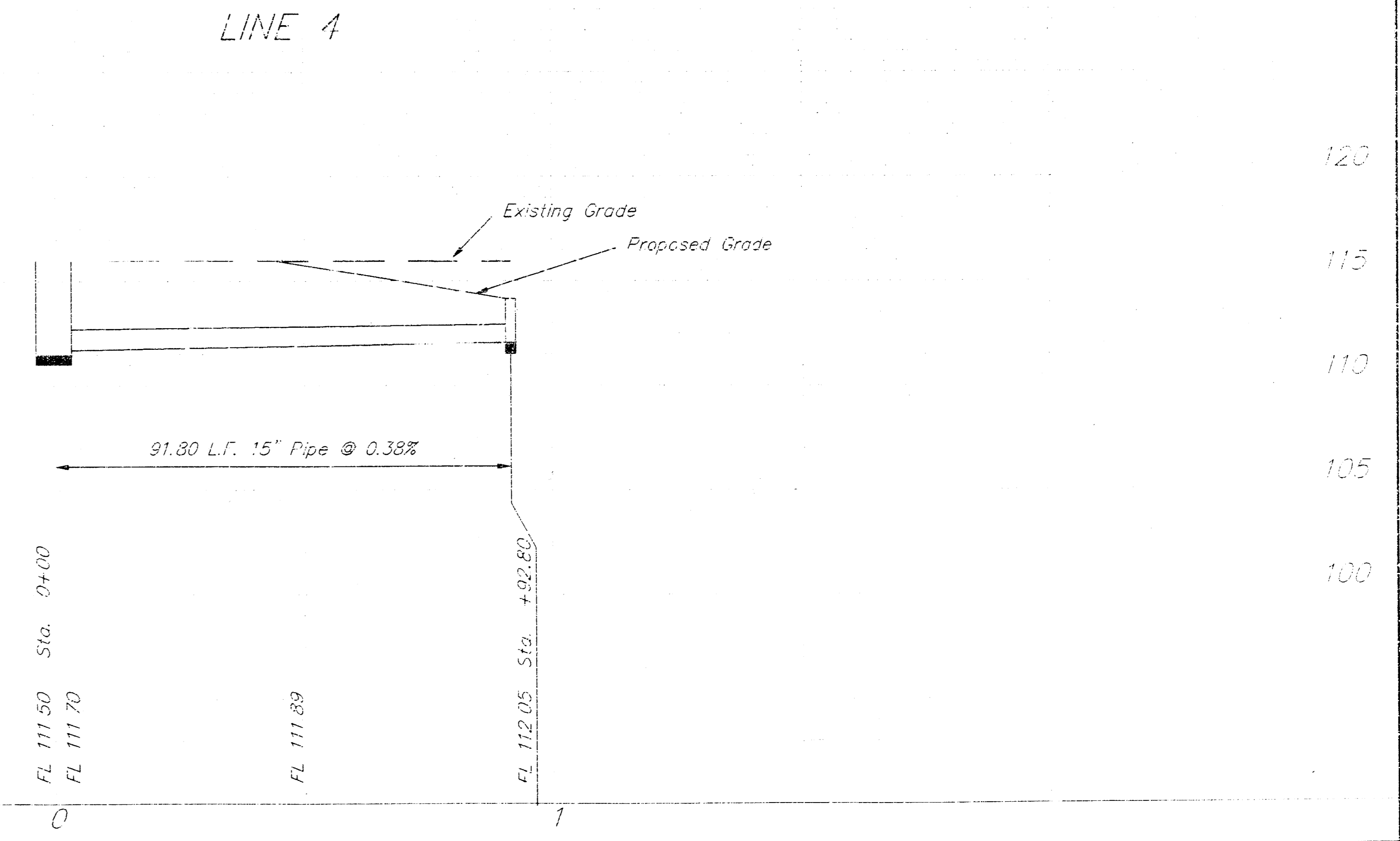
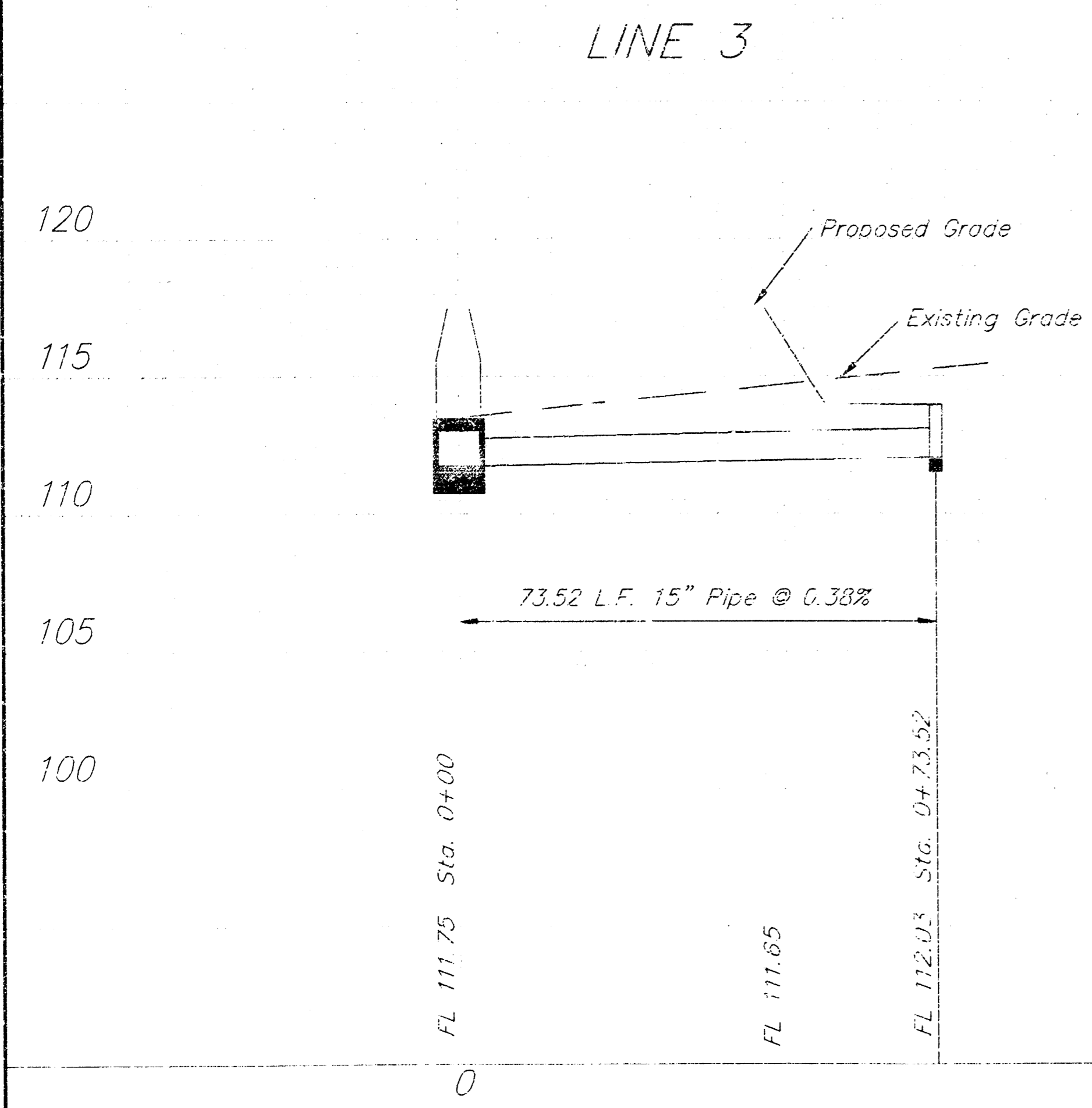
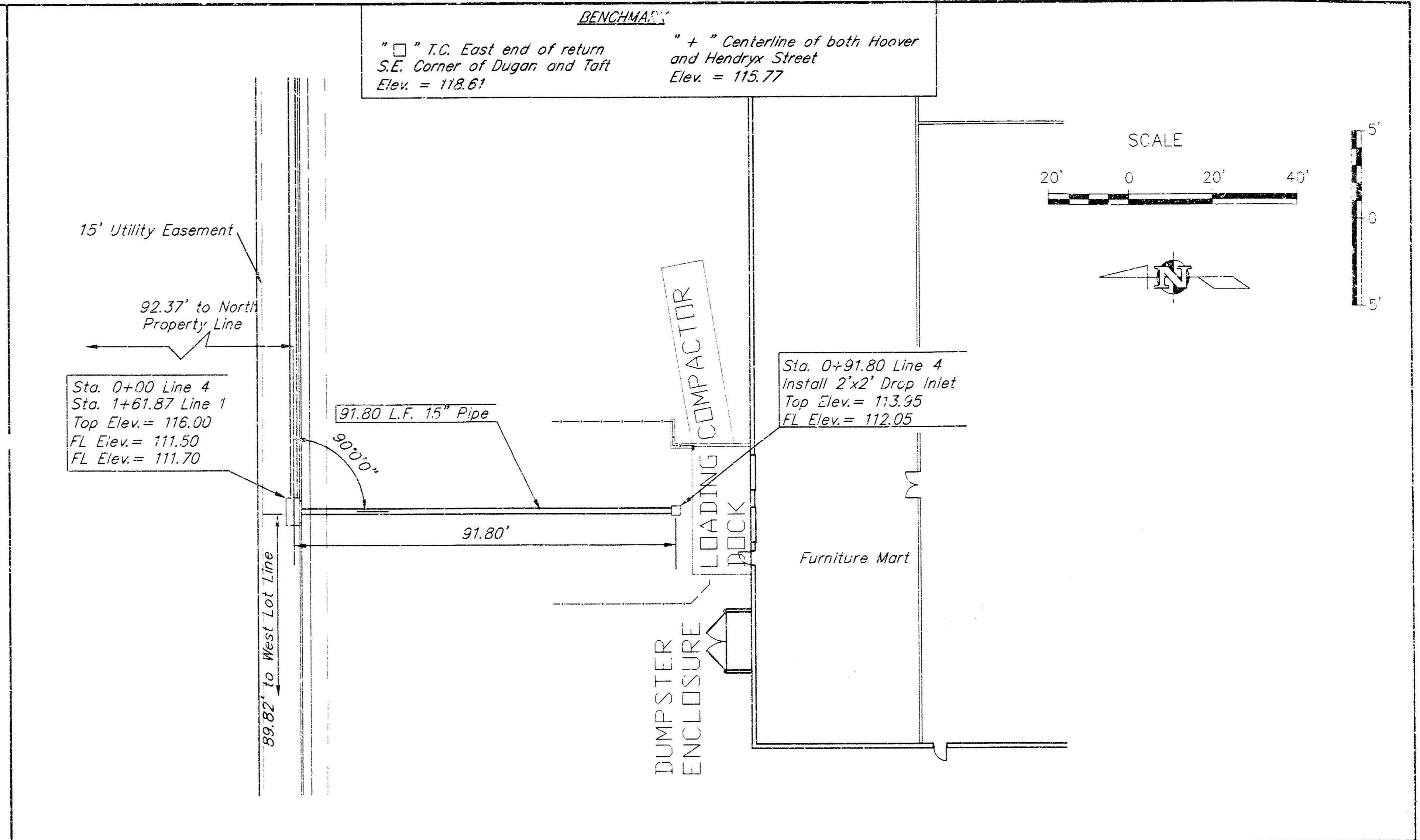
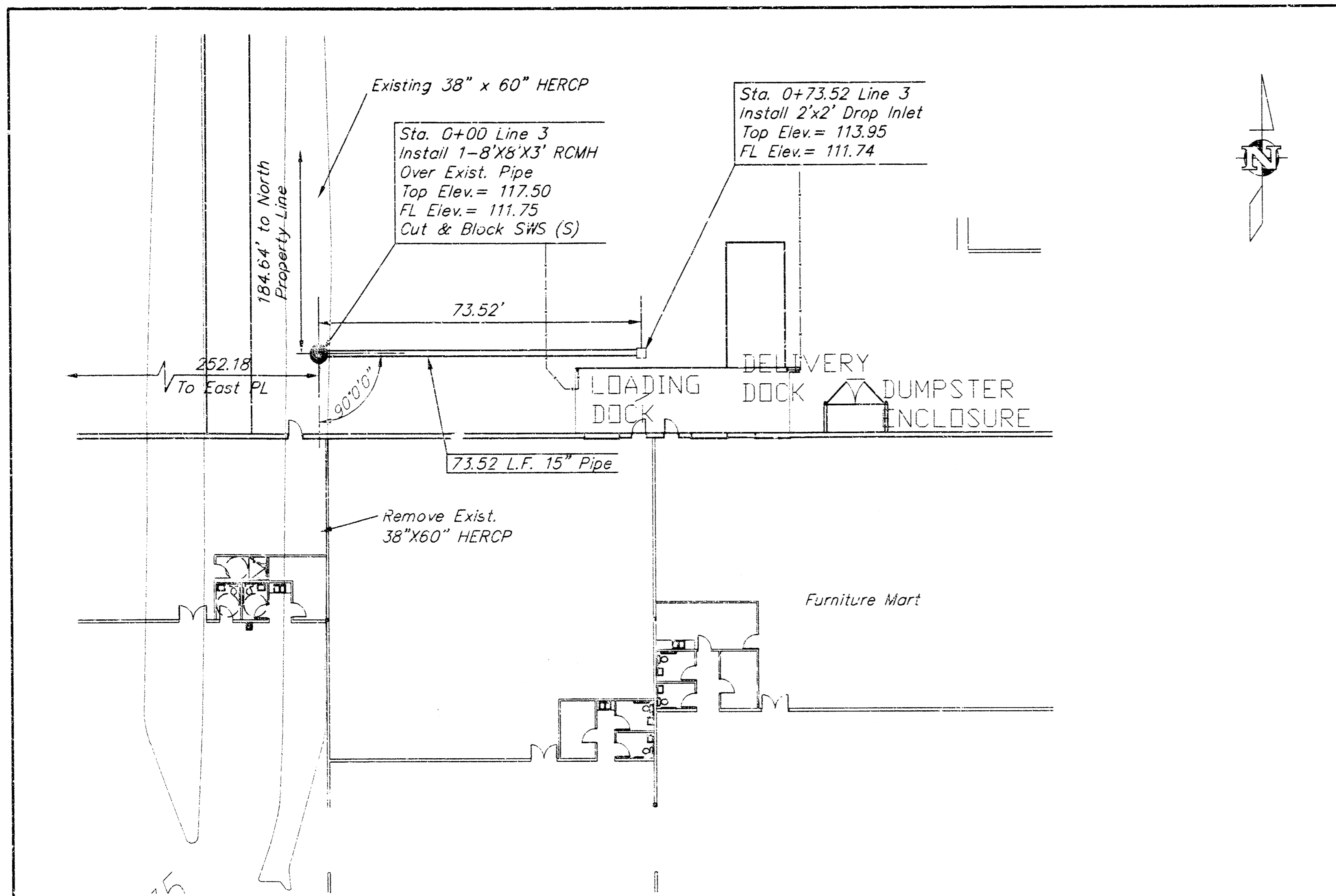
	PROJECT NUMBER 868PPS		AM. NO. 86899	WEST KELLOGG POWER CENTER SWE LINE 1 WIGHTIA, KS.	SHEET 2
	DESIGN CU	DRAWN CU	FILE SAS/PPS		DATE 6/22/98

BENCHMARK
 "□" T.C. East end of return
 S.E. Corner of Dugan and Taft
 Elev. = 118.61
 " + " Centerline of both Hoover
 and Hendryx Street
 Elev. = 115.77

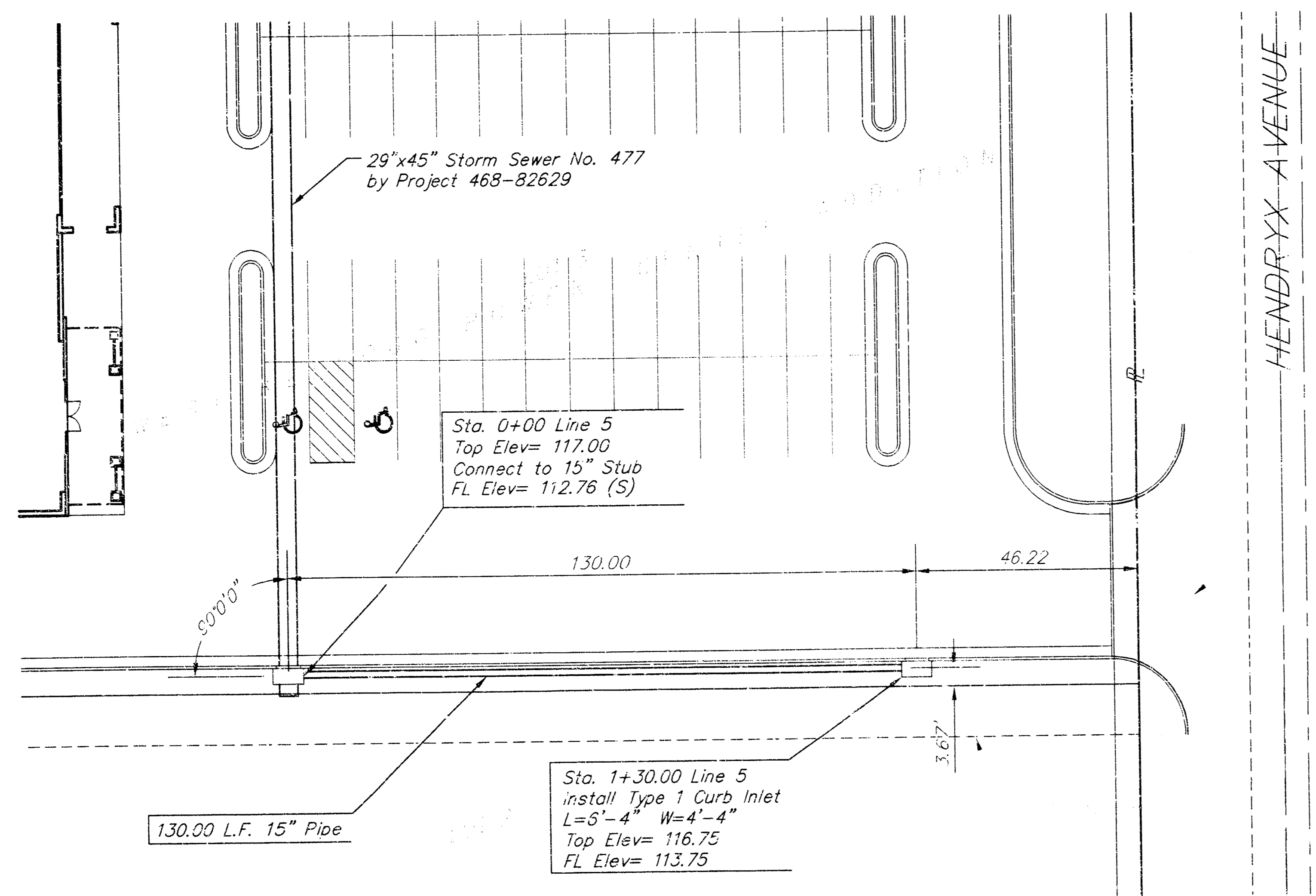


PROJECT NUMBER 888PPS				AM NO. 22014	LOT 3, WEST KELLOGG POWER CENTER SWS LINE 2 WICHITA, KS.	SHEET 3
DESIGN CM	DRAWN CM	FILE SWSPPS2	DATE 6/17/98	SCALE 1"=20'		OF 6

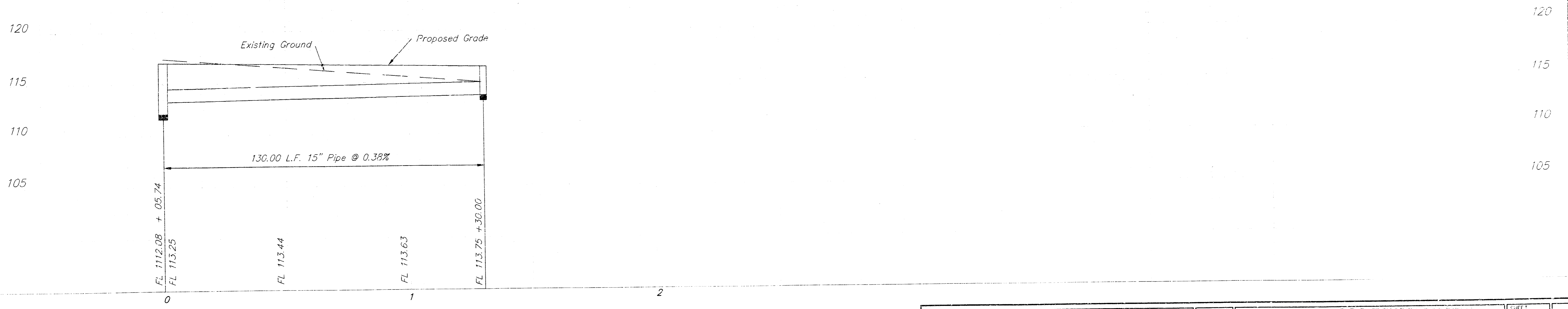
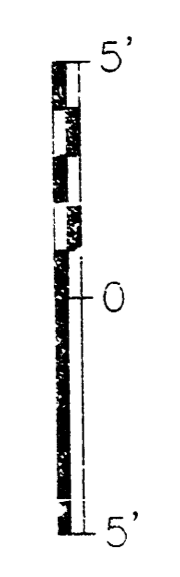
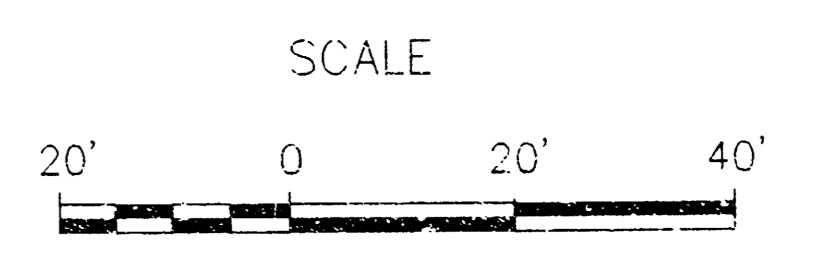
DATE
1/22/99



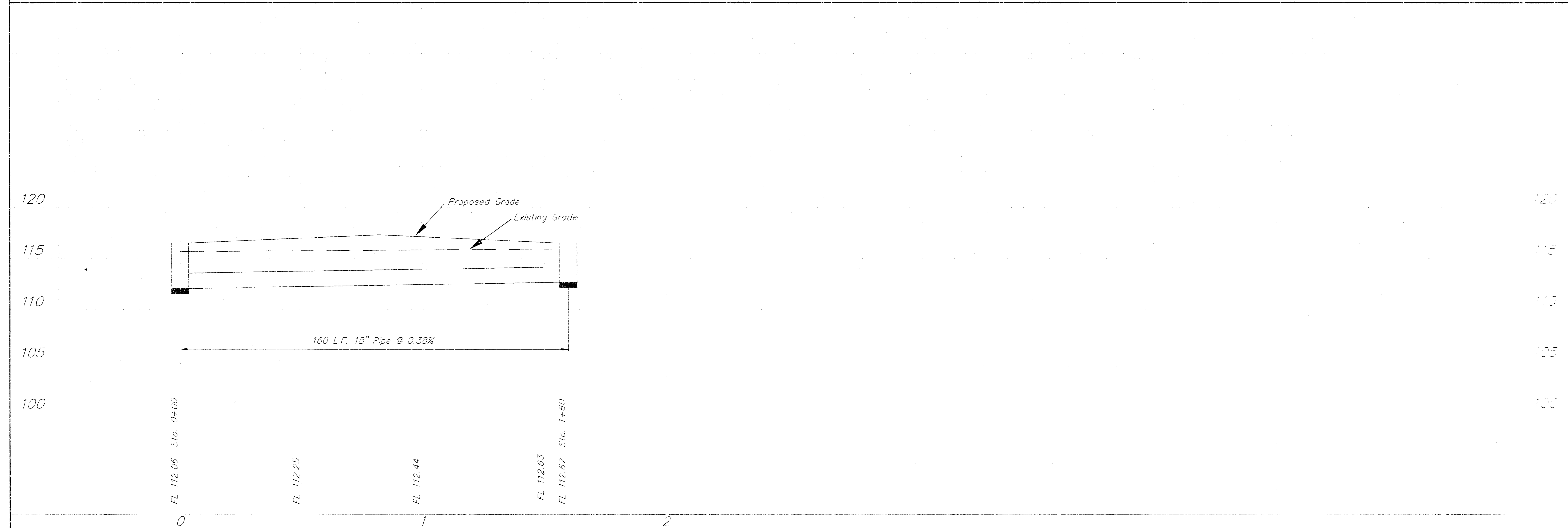
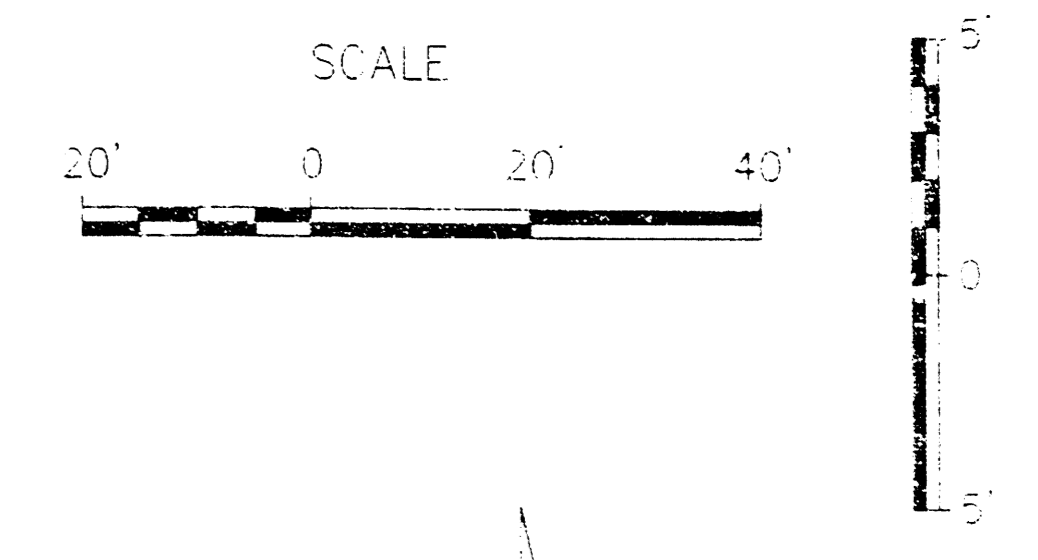
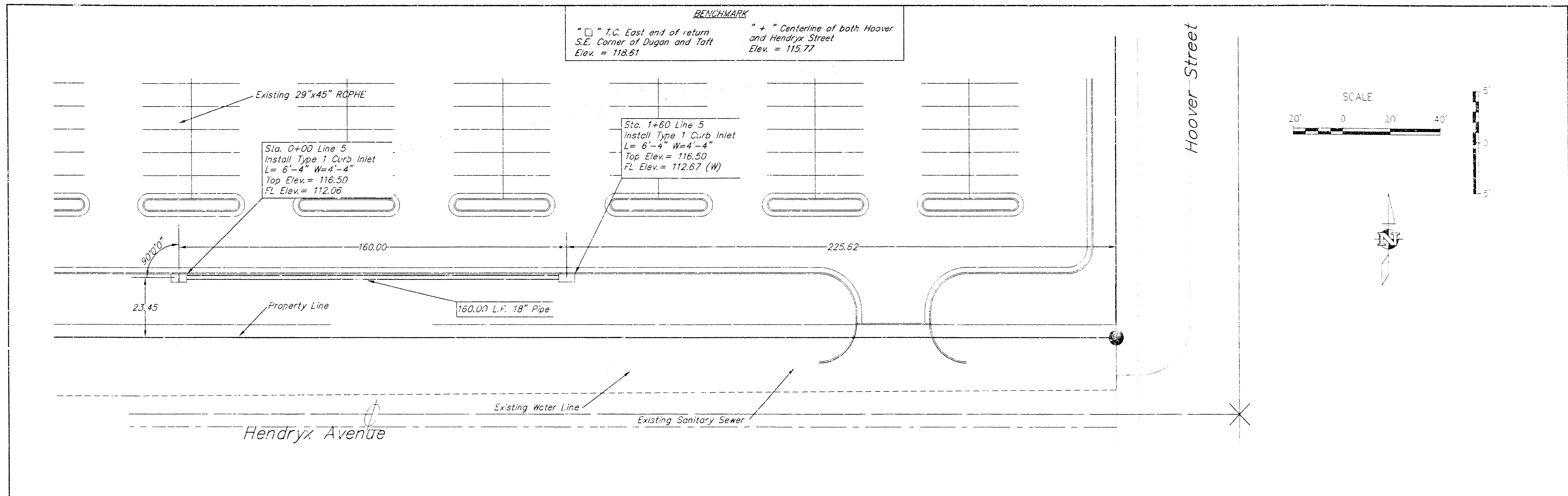
	PROJECT NUMBER		AM. NO.		LOT 3, WEST KELLOGG POWER CENTER SWS LINES 3 & 4 WICHITA, KS.	SHEET 4 OF 6
	DESIGN	DRAWN	FILE	DATE		
	KU	JG	SWSLINES3	6/11/98	1"=20'	



BENCHMARK
 "□" T.C. East end of return
 S.E. Corner of Dugan and Taft
 Elev. = 118.61
 " + " Centerline of both Hoover
 and Hendryx Street
 Elev. = 115.77



	PROJECT NUMBER 888PPS		AM. NO. 98049	WEST KELLOGG POWER CORPORATION SWS LINE 5 WICHITA, KS	SHEET 5
	DESIGN KJ	DRAWN CM	FILE SASPPS4		DATE 6/17/98



	PROJECT NUMBER 983PFS				AM. NO. 33049	LOT 3, WEST KELLOGG POWER CENTER SWS LINE 6 WICHITA, KS	SHEET 6
	DESIGN KM	DRAWN LS	FILE 3/10/25	DATE 7-29-05	SCALE 1"=20'		OF 6