

INDEX OF SHEETS

1. TITLE SHEET
2. PLAN
3. PLAN/PROFILE
4. TYPE 1A CURB INLET

PRIVATE STORM WATER SEWER IMPROVEMENTS

IN

KANSAS SURGERY AND RECOVERY CENTER ADDITION

TO SERVE

VIA CHRISTI REHABILITATION CENTER

PROJECT SURVEY CONTROL
CITY OF WICHITA VERTICAL DATUM

BM: CIRCLED "3" IN SOUTH TOP OF CURB CHAIRMAN WHEELS
80' EAST OF THE N.E. CORNER LOT 4, KANSAS SURGERY
AND RECOVERY CENTER ADDITION

ELEV. = 220.59 CITY DATUM

CITY OF WICHITA PROJECT NO. 876PPS (607861)

GENERAL NOTES

1. ALL ELEVATIONS SHOWN ARE CITY OF WICHITA DATUM (U.S.G.S. - 1187.4 = CITY DATUM)
2. CONTRACTOR WILL BE REQUIRED TO PROVIDE A MINIMUM ADVANCE NOTICE OF FORTY-EIGHT (48) HOURS TO UTILITY COMPANIES PRIOR TO STARTING ANY EXCAVATION AS FOLLOWS:

KANSAS ONE-CALL 687-2470

THE CONTRACTOR MUST NOTIFY THE FOLLOWING IN CASE OF AN EMERGENCY:

MULTIMEDIA CABLEVISION	262-4270 OR 263-2061
KANSAS GAS SERVICE	832-1190
KGE - ELECTRIC	383-8900
PEOPLES NATURAL GAS	948-0066
SOUTHWESTERN BELL TELEPHONE CO.	1800-774-7590
CITY OF WICHITA WATER DEPARTMENT	262-1600
KANED PIPE LINE	262-1408

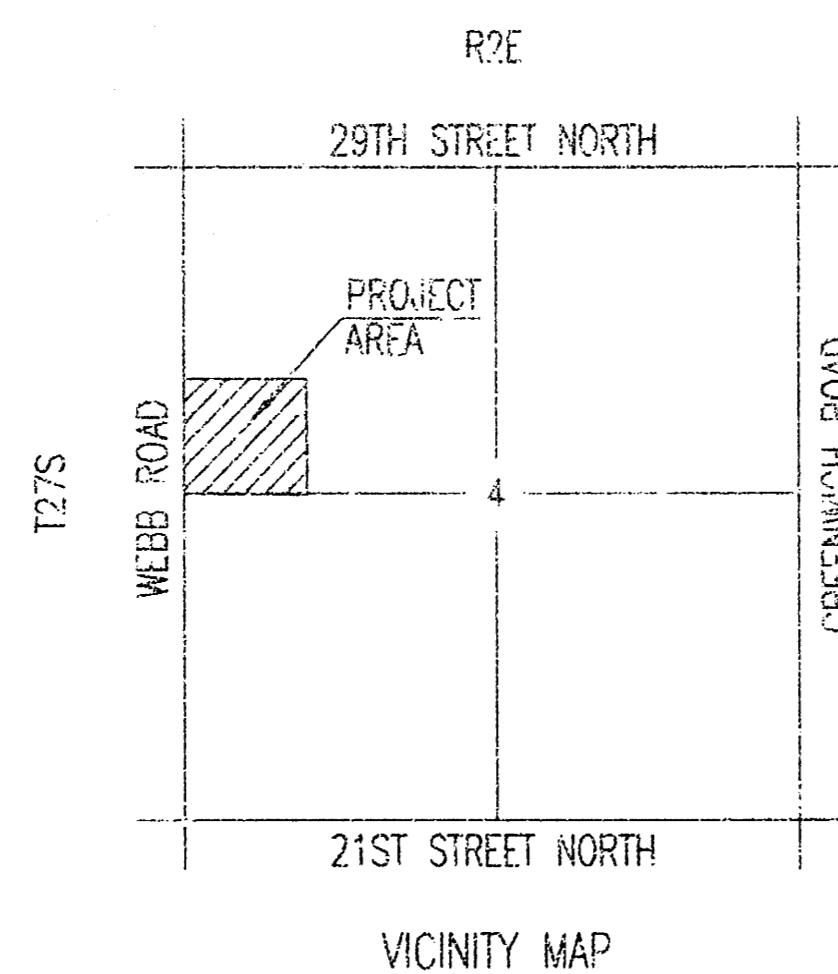
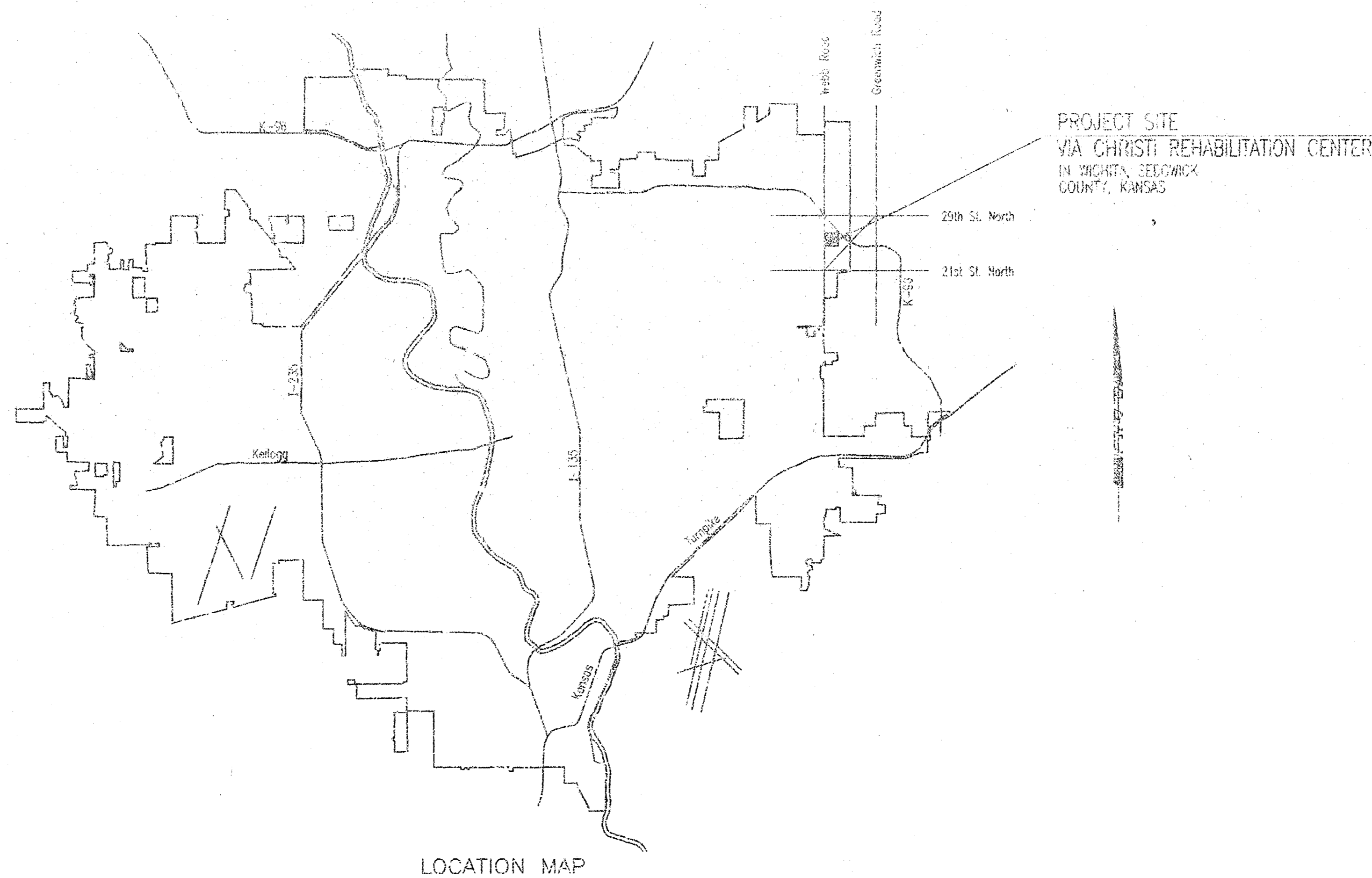
3. THE CONTRACTOR SHALL BE RESPONSIBLE FOR PRESERVING PROPERTY IRONS. THE CONTRACTOR SHALL BE REQUIRED TO RE-ESTABLISH ANY PROPERTY IRONS WHICH ARE DAMAGED OR DESTROYED BY HIS CONSTRUCTION OPERATIONS. SUCH IRONS SHALL BE RE-ESTABLISHED BY A LICENSED LAND SURVEYOR IN ACCORDANCE WITH STATE LAWS. ALL COSTS FOR THIS WORK SHALL BE SUBSIDIARY TO SITE RESTORATION.

4. INTERURBAN TRAFFIC GENERATED OUTSIDE THE PROJECT AREA AND LOCAL BUSINESS OR RESIDENTIAL TRAFFIC GENERATED WITHIN THE PROJECT AREA ARE TO CARRIED THROUGH CONSTRUCTION AS FURTHER PROHIBITED BY PROJECT SPECIAL PROVISIONS. THE CONTRACTOR SHALL UTILIZE BARRICADES, SIGNS, GUARDS, AND FLAGMEN IN ACCORDANCE WITH THE MANUAL ON UNIFORM TRAFFIC CONTROL DEVICES.

5. RUBBLE FROM THE REMOVAL OF MISCELLANEOUS STRUCTURES INCLUDING ANY TREES REMOVED AND TREE TRIMMING SHALL BE DISPOSED OF ON SITES PROVIDED BY THE CONTRACTOR. THESE SITES SHALL ALSO BE APPROVED OF BY THE ENGINEER AS TO SUITABILITY, APPEARANCE, AND SITE LOCATION. LOCATIONS THAT, IN THE OPINION OF THE ENGINEER, LEAVE AN UNSIGHTLY APPEARANCE WILL NOT BE APPROVED. ALL DISPOSAL SITES MUST BE APPROVED BY THE KANSAS DEPARTMENT OF HEALTH AND ENVIRONMENT. MATERIAL EITHER STOCKPILED OR DISPOSED OF IN A FLOOD PLAIN WILL REQUIRE A KANSAS STATE BOARD OF AGRICULTURE PERMIT. ANY MATERIAL DUMPED IN WATERS OF THE UNITED STATES OR WETLANDS IS SUBJECT TO U.S. CORPS OF ENGINEERS PERMITTING REGULATIONS. ANY MATERIAL BURIED OR STOCKPILED BEYOND APPROVED CONSTRUCTION LIMITS MAY REQUIRE ARCHAEOLOGICAL INVESTIGATIONS UNLESS BURIED IN A PREVIOUSLY APPROVED DISPOSAL LOCATION.

6. ALL LAWN/TURF AREAS DISTURBED BY CONSTRUCTION OF THE PROPOSED IMPROVEMENTS SHALL BE RESTORED WITH THE SAME GRASS/SOD AS EXISTING. RESTORATION OF DISTURBED AREAS SHALL INCLUDE, BUT NOT BE LIMITED TO, TOP SOIL PREPARATION, SEEDING, MULCH, AND/OR RESEEDING. ALL SEEDING/SODDING WORK SHALL BE IN ACCORDANCE WITH THE CITY OF WICHITA STANDARD SPECIFICATIONS AND THE CITY OF WICHITA ADMINISTRATIVE REGULATION NO. AR78 WHICH GOVERNS CLEANUP AND RESTORATION OR REPLACEMENT FOLLOWING CONSTRUCTION.

7. THE CONTRACTOR SHALL SEED ALL AREAS DISTURBED BY CONSTRUCTION ACTIVITIES WITH TEMPORARY RYE GRASS. THIS TEMPORARY SEEDING MAY BE OMITTED ONLY IF OTHER SEEDING IS REQUIRED. TEMPORARY SEEDING OR PERMANENT SEEDING/SODDING SHALL BE APPLIED WITHIN 14 DAYS AFTER THE AREA HAS BEEN DISTURBED.



PROJECT SITE
VIA CHRISTI REHABILITATION CENTER
IN WICHITA, SEDGWICK
COUNTY, KANSAS



APPROVED AS NOTED
BY CITY ENGINEER OF WICHITA

SANITARY SEWERS _____
STORM SEWERS VRH 12/1/98
DRIVEWAY APPROACHES _____
WATER MAINS _____
PAVING _____

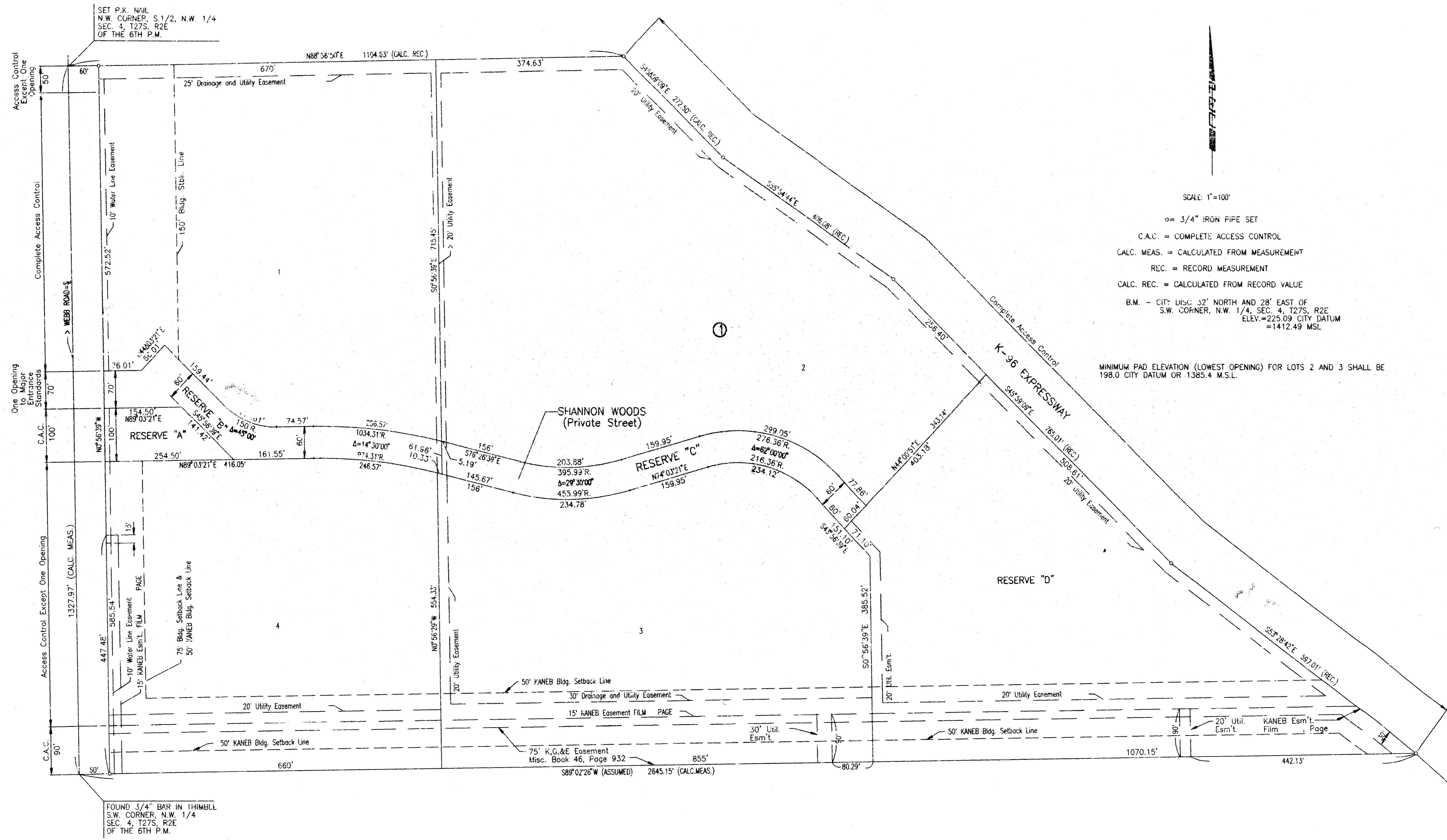
NOTE TO CONTRACTOR

INSPECTION AND TESTING FOR THIS PROJECT IS TO BE PROVIDED BY A LICENSED CONSULTING ENGINEERING FIRM UNDER CONTRACT WITH THE CONTRACTOR. SAID INSPECTION TO BE IN ACCORDANCE WITH THE CITY OF WICHITA STANDARD CONSTRUCTION ENGINEERING PRACTICES AND CERTIFIED BY A LICENSED PROFESSIONAL ENGINEER. NO WORK SHALL BE PERFORMED IN DEDICATED EASEMENTS OR PUBLIC RIGHT-OF-WAY BY THE CONTRACTOR WITHOUT SUCH INSPECTION HOR SHALL ANY WORK BE COMMENCED IN DEDICATED EASEMENTS OR PUBLIC RIGHT-OF-WAY WITHOUT WRITTEN AUTHORIZATION BY THE CITY ENGINEER.

DECEMBER 1998

PLANS PREPARED BY
PROFESSIONAL ENGINEERING CONSULTANTS, P.A.
ENGINEERS
WICHITA, KANSAS

KANSAS SURGERY AND RECOVERY CENTER ADDITION TO WICHITA, SEDGWICK COUNTY, KANSAS

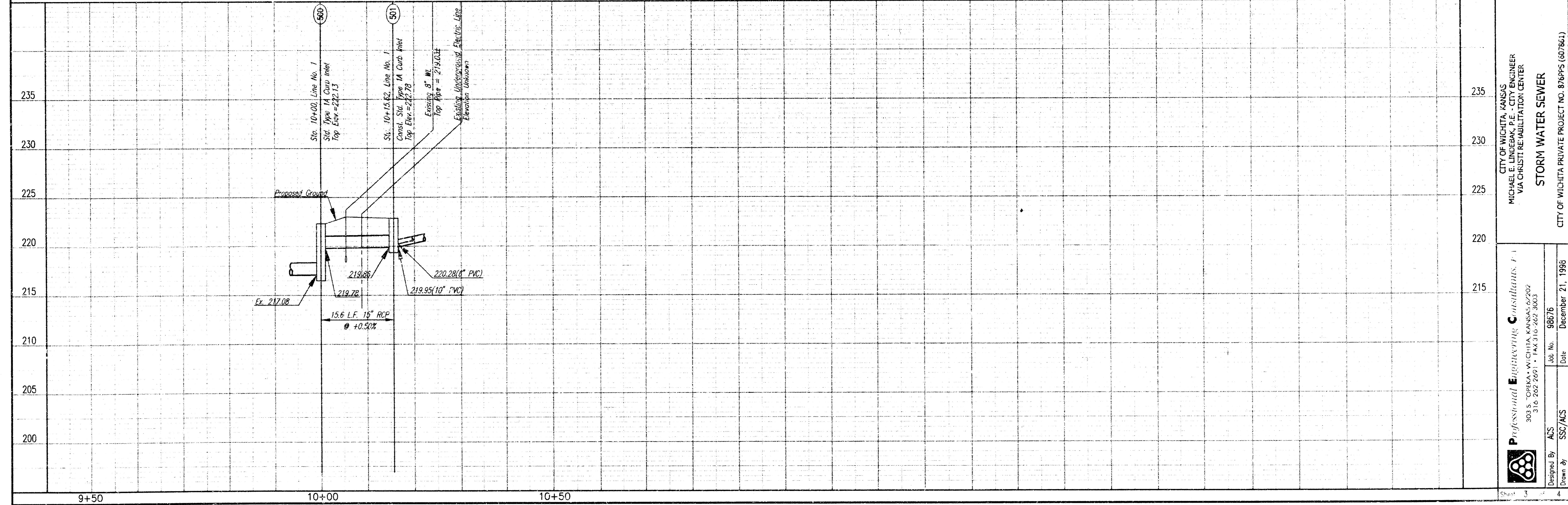
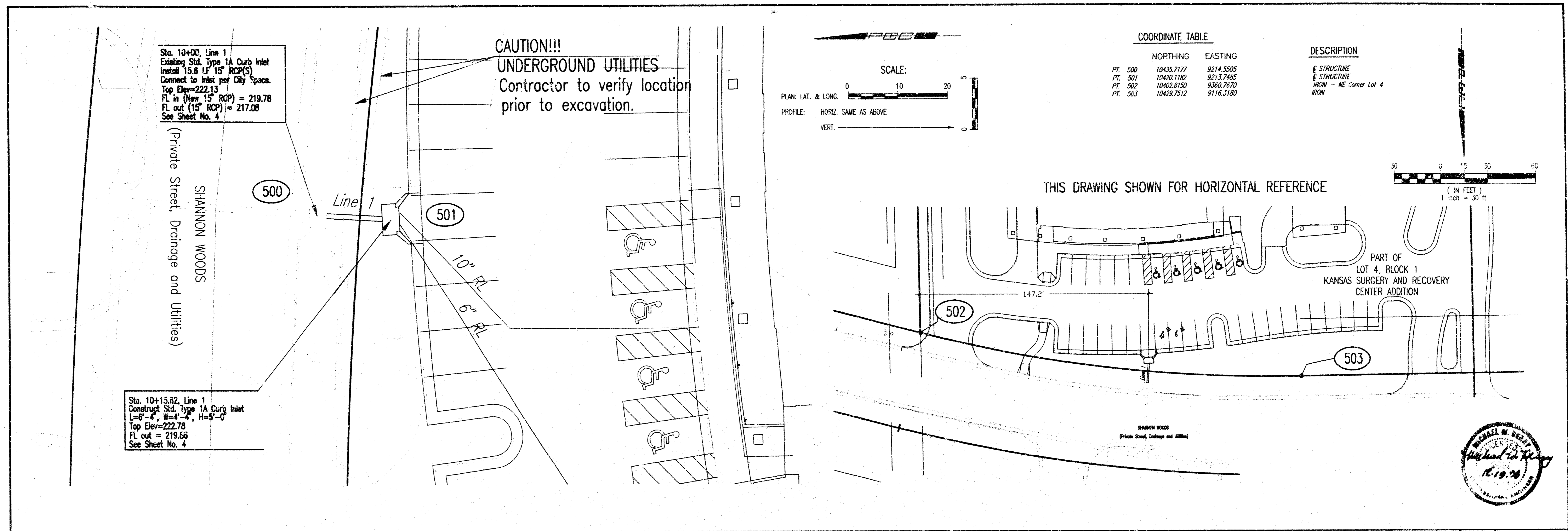


SCALE: 1"=100'

- o= 3/4" IRON PIPE SET
- C.A.C. = COMPLETE ACCESS CONTROL
- CALC. MEAS. = CALCULATED FROM MEASUREMENT
- REC. = RECORD MEASUREMENT
- CALC. REC. = CALCULATED FROM RECORD VALUE
- B.M. - CITY DISC 32' NORTH AND 28' EAST OF S.W. CORNER, N.W. 1/4, SEC. 4, T27S, R2E, ELEV.=225.09 CITY DATUM =1412.49 MSL

MINIMUM PAD ELEVATION (LOWEST OPENING) FOR LOTS 2 AND 3 SHALL BE 198.0 CITY DATUM OR 1385.4 M.S.L.

F:\1998\98875\DWG\STORM\PLAN\PRO.dwg Sat Dec 19 09:43:45 1998 SSC_A



CITY OF WICHITA, KANSAS
 MICHAEL E. UNDERBAK, P.E. - CITY ENGINEER
 VIA CHRISTI REHABILITATION CENTER

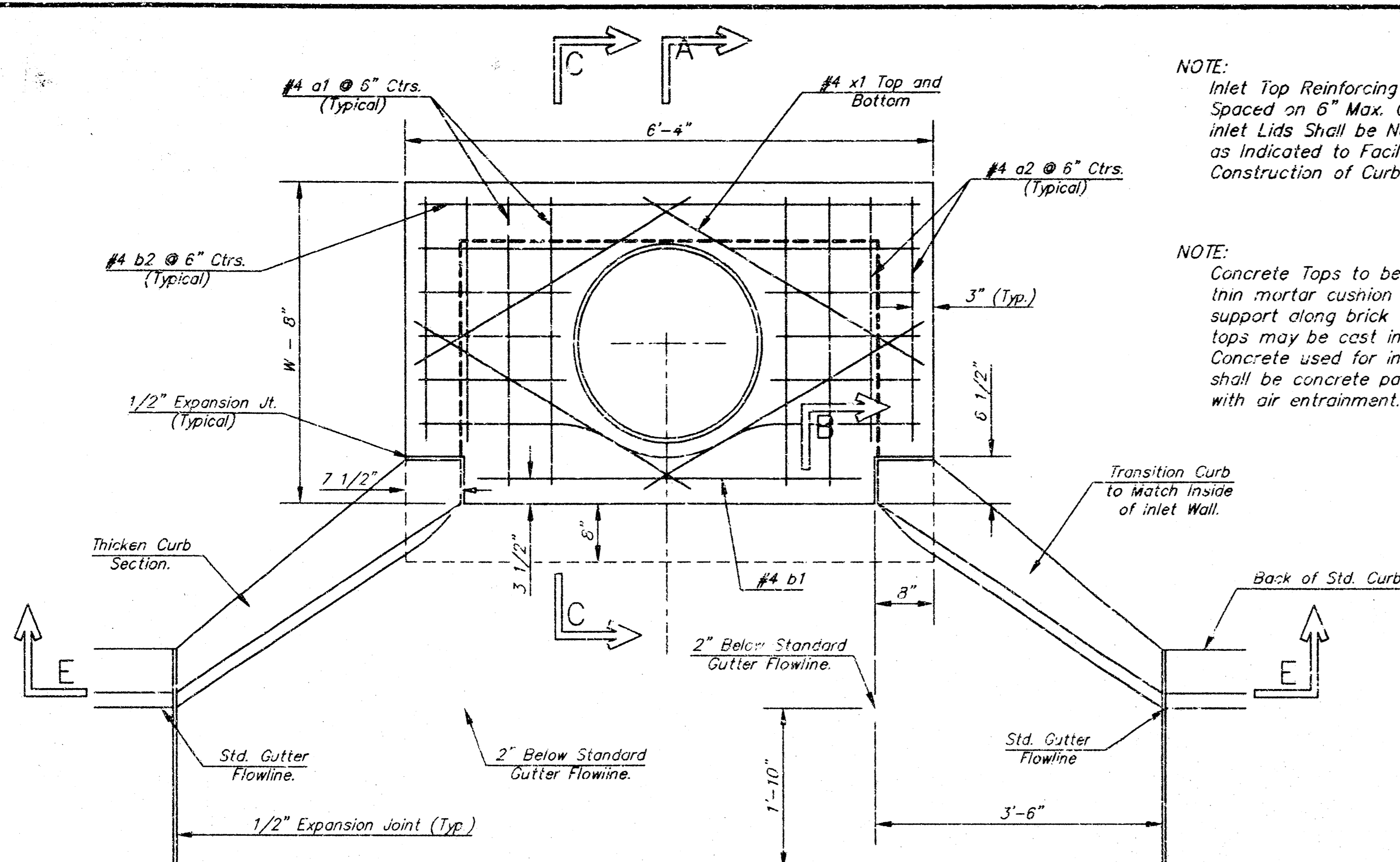
STORM WATER SEWER

CITY OF WICHITA PRIVATE PROJECT NO. 876P/S (607861)

Professional Engineering Consultants, P.A.
 303 S. CORONA, WICHITA, KANSAS 67202
 316.262.2621 • FAX 316.262.3003

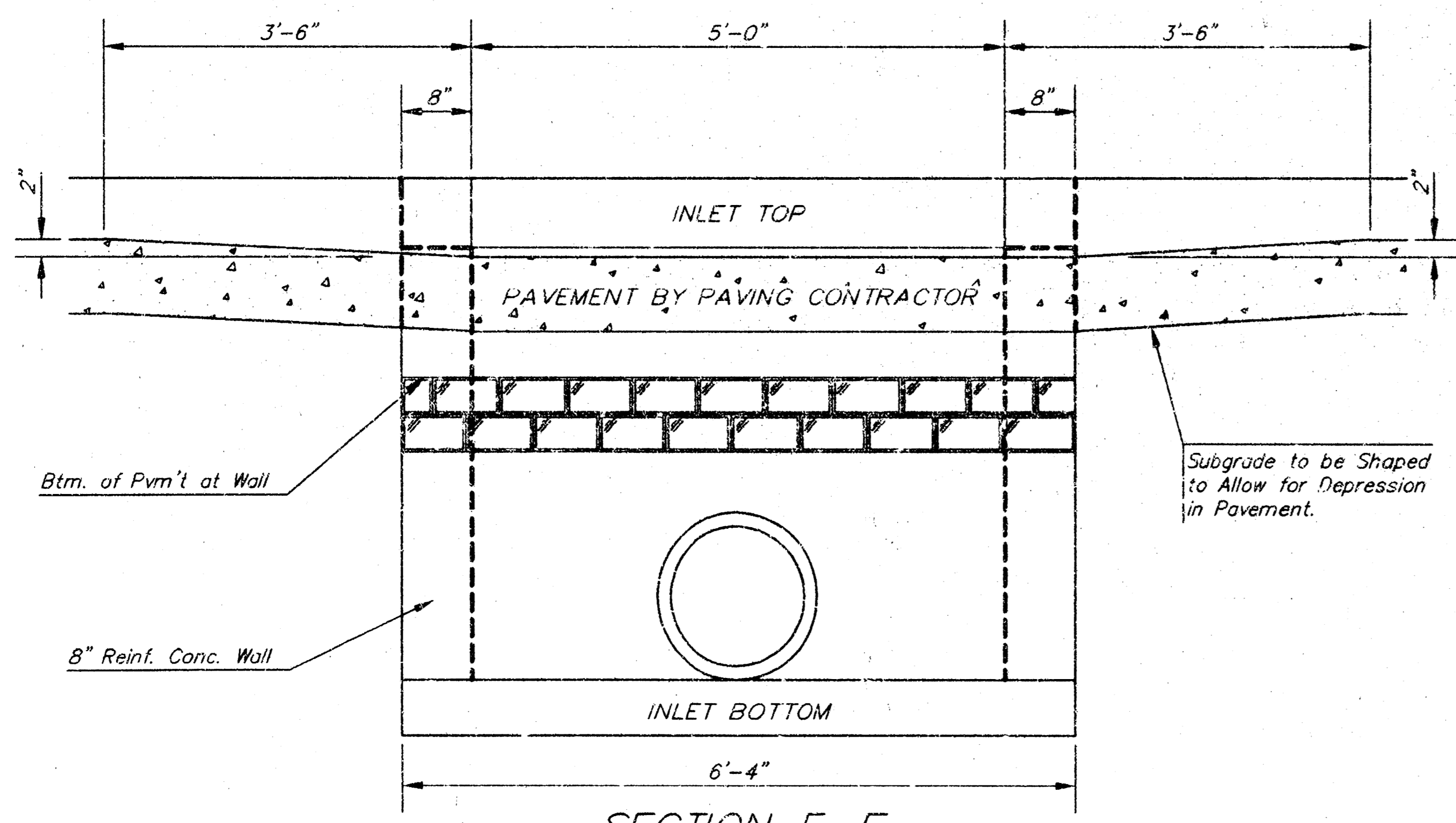
Designed By: ACS
 Drawn By: SSC/ACS

Job No. 98875
 Date December 21, 1998

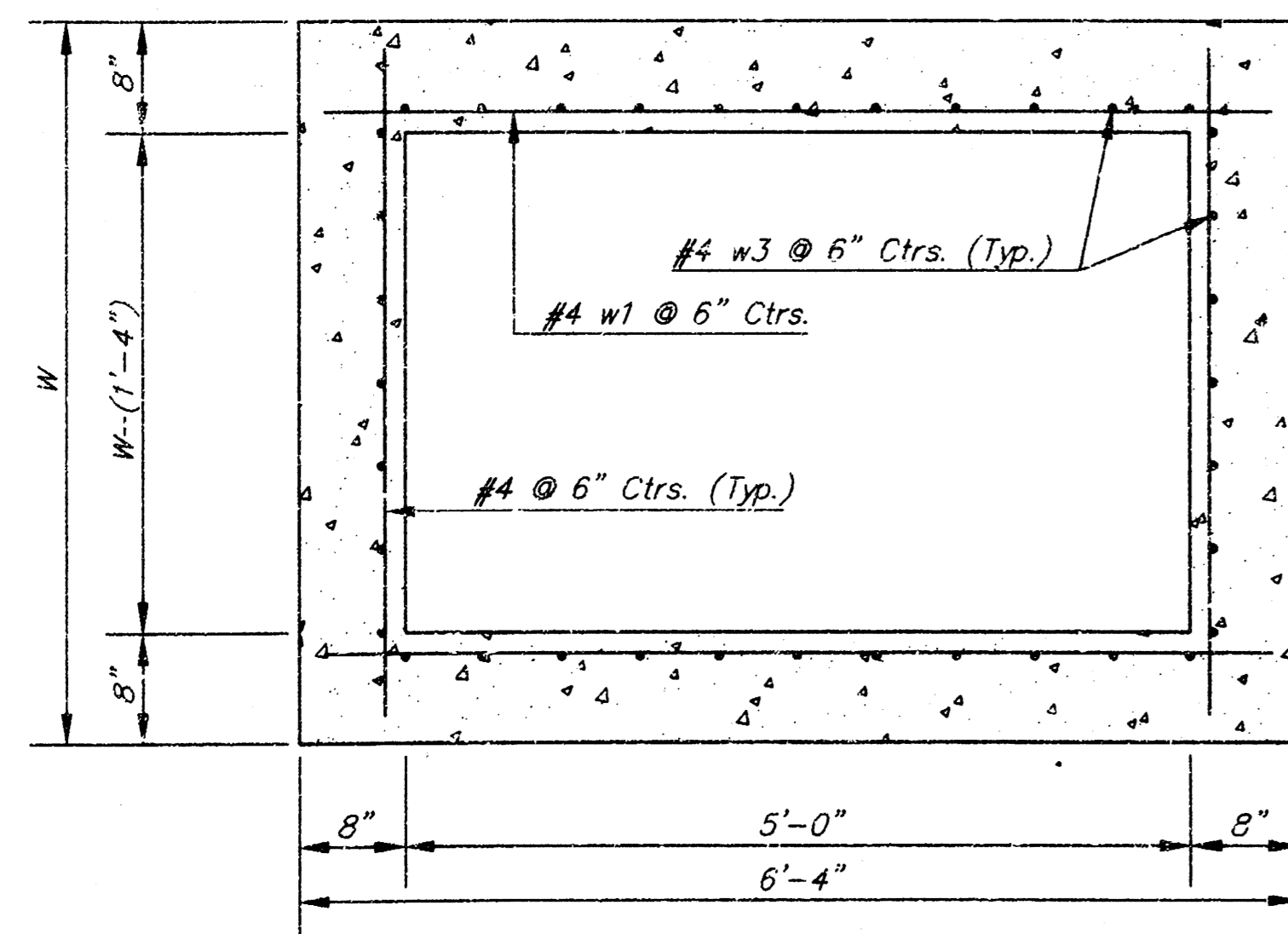


NOTE:
Expansion Joint Only in Curb
Area With Concrete Pavement.

PLAN



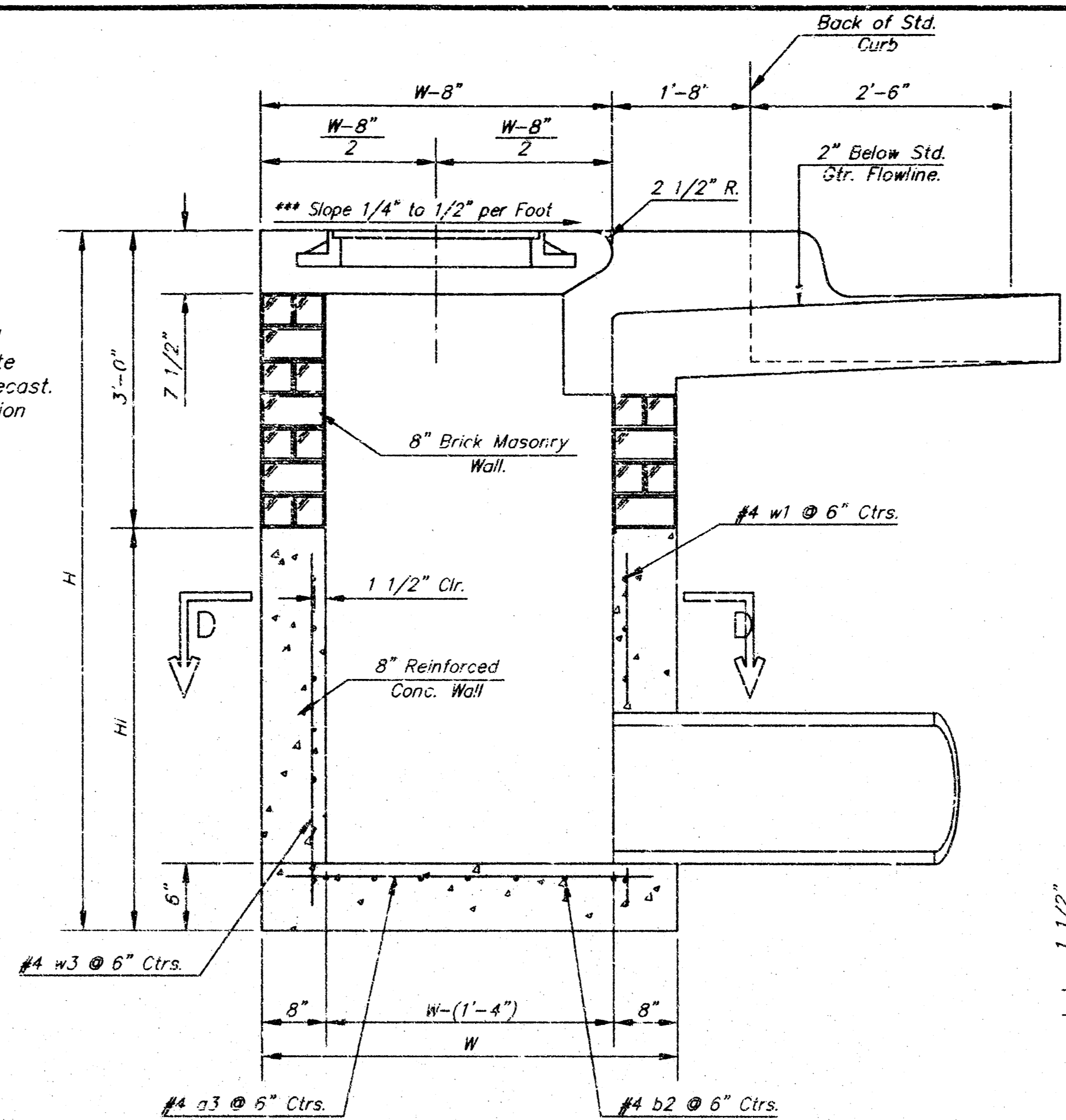
SECTION E-E



SECTION D-D

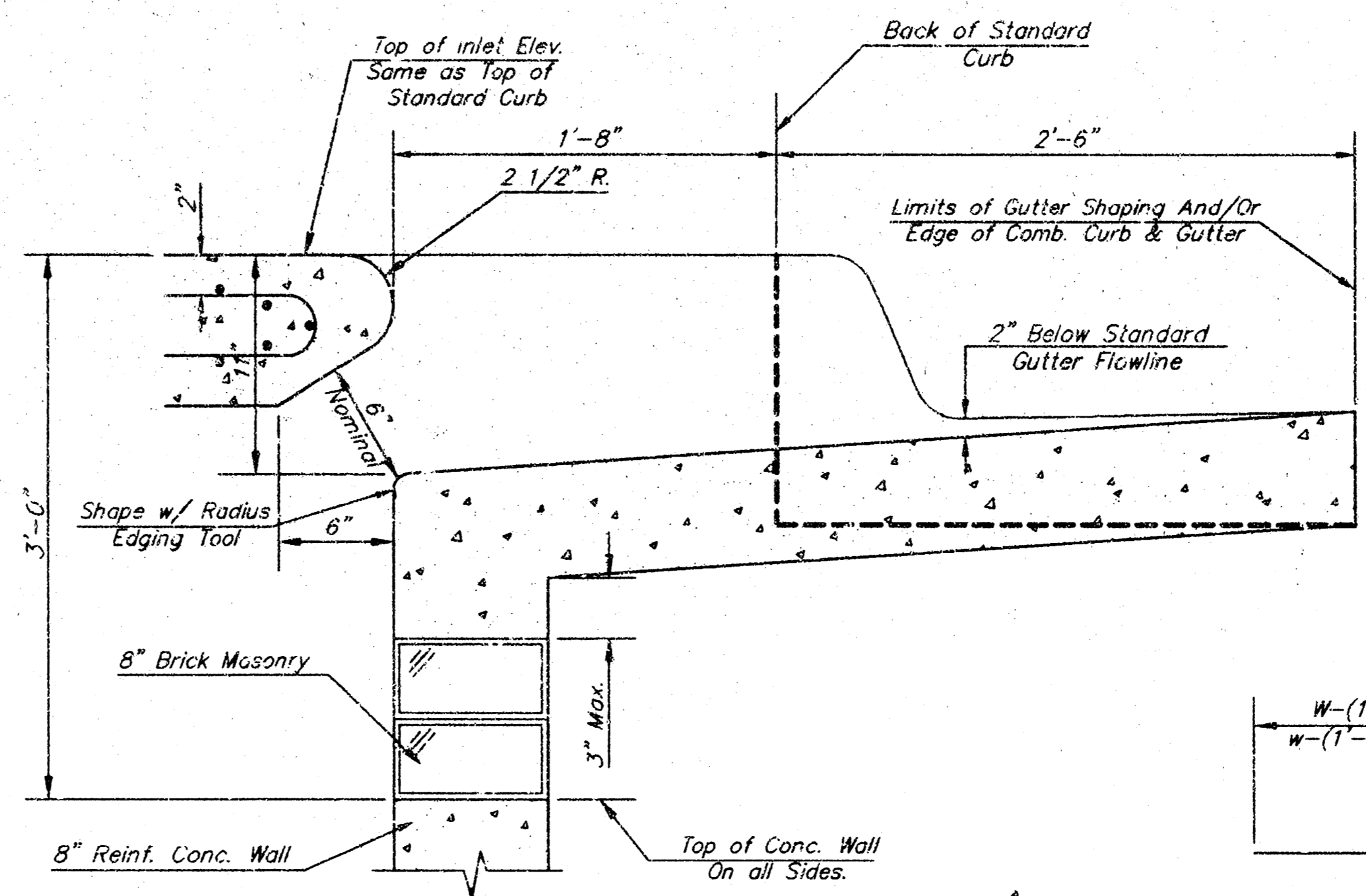
NOTE:
Inlet Top Reinforcing shall be
Spaced on 6" Max. Centers.
Inlet Lids Shall be Notched Out
as Indicated to Facilitate
Construction of Curb.

NOTE:
Concrete Tops to be installed on
thin mortar cushion to insure full
support along brick walls. Concrete
tops may be cast in place or precast.
Concrete used for inlet construction
shall be concrete pavement mix
with air entrainment.



SECTION A-A

***NOTE: Slope of Inlet tops to Match
Sidewalk or Parking Slopes within
Limits Indicated.

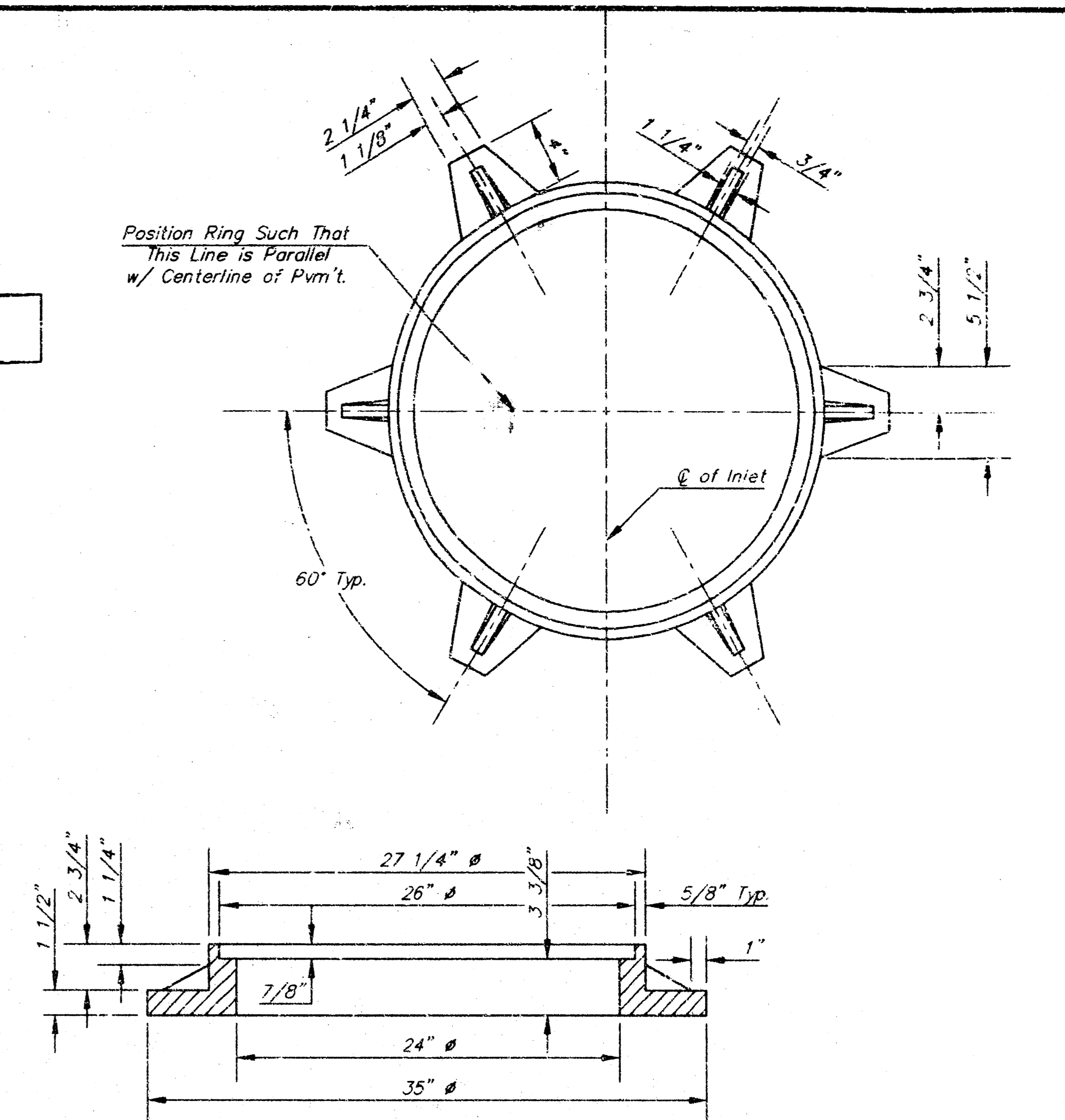


SECTION B-B

PRECAST SLAB AND FLOOR REINFORCING											
		W = 4'-4"		W = 5'-4"		W = 6'-4"		W = 7'-4"		W = 8'-4"	
MARK	SIZE	NO.	LENGTH	NO.	LENGTH	NO.	LENGTH	NO.	LENGTH	NO.	LENGTH
a1	#4	5	6'-7"	6	8'-7"	6	10'-7"	6	12'-7"	6	14'-7"
a2	#4	4	6'-0"	4	8'-0"	4	10'-0"	4	12'-0"	4	14'-0"
a3	#4	13	4'-1"	13	5'-1"	13	6'-1"	13	7'-1"	13	8'-1"
b1	#3	1	4'-9"	1	4'-9"	1	4'-9"	1	4'-9"	1	4'-9"
b2	#4	23	6'-1"	29	6'-1"	35	6'-1"	41	6'-1"	47	6'-1"
x1	#4	8	3'-10"	8	4'-2"	8	4'-6"	8	4'-10"	8	5'-2"

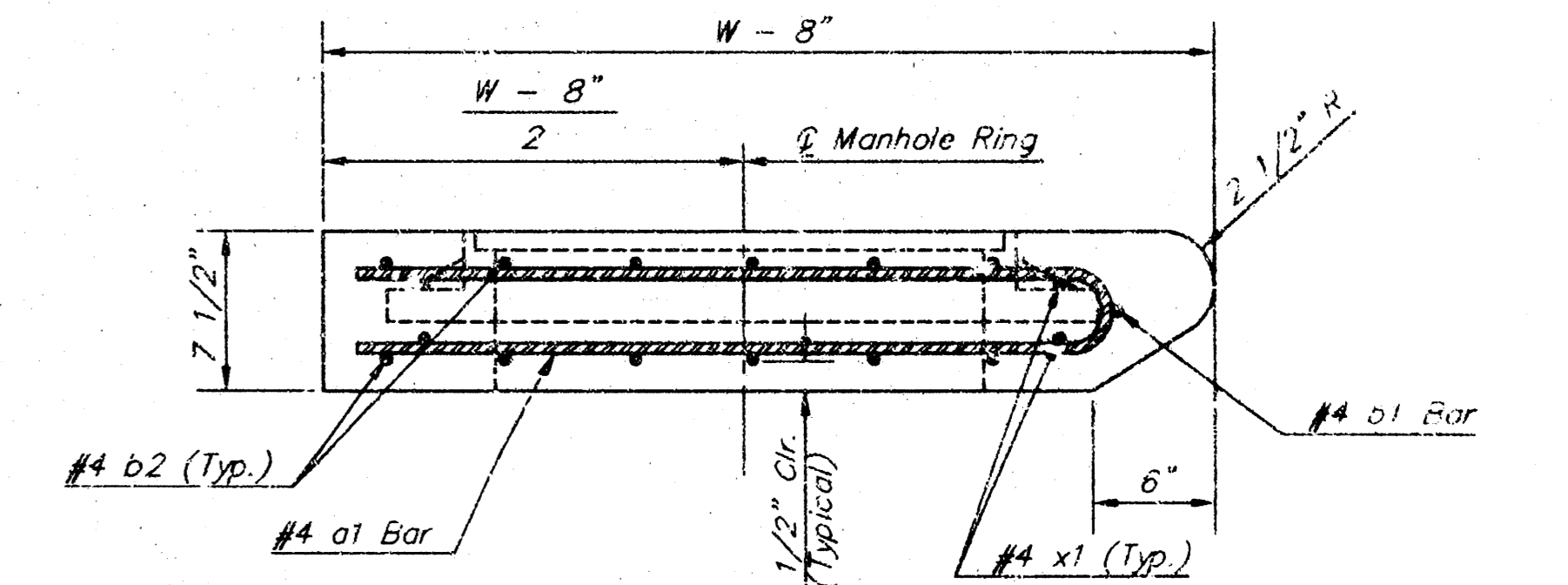
WALL REINFORCING											
		W = 4'-4"		W = 5'-4"		W = 6'-4"		W = 7'-4"		W = 8'-4"	
MARK	SIZE	NO.	LENGTH	NO.	LENGTH	NO.	LENGTH	NO.	LENGTH	NO.	LENGTH
w1	#4	①	6'-1"	①	6'-1"	①	6'-1"	①	6'-1"	①	6'-1"
w2	#4	①	4'-1"	①	5'-1"	①	6'-1"	①	7'-1"	①	8'-1"
w3	#4	32	②	36	②	40	②	44	②	48	②

* Field Bend or Cut Reinforcing as Required for Clearance.
① 4 (H - 12") (H - 21") Rounded down to nearest 0.5"
② H - 3"

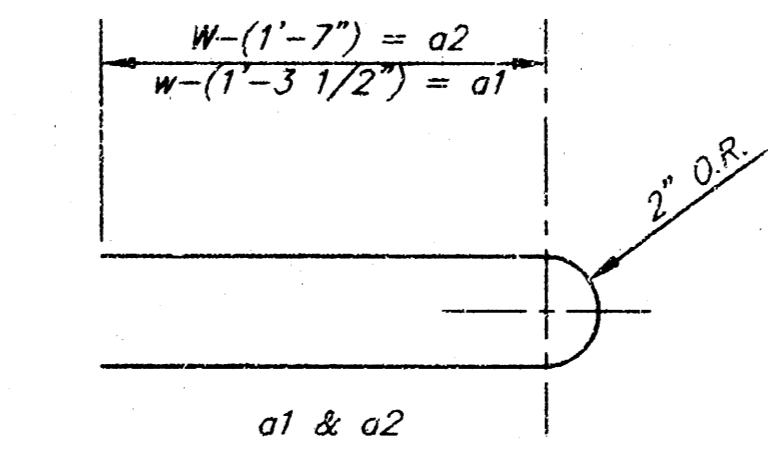


MANHOLE RING AND COVER

Weight = 180 Lbs.
*See City of Wichita Standard Manhole Ring
and Cover Detail Sheet for Cover Details to
Be Used With Inlet Frame.



SECTION A-A



BENDING DIAGRAM

STANDARD CURB INLET PRECAST TOPS			
W	PRE-CAST TOP SIZE	PIPE SIZE	CU. YD. CONC.
4'-4"	3'-8" x 6'-4" x 7 1/2"	21" & SMALLER	0.38±
5'-4"	4'-8" x 6'-4" x 7 1/2"	24" & 30"	0.51±
6'-4"	5'-8" x 6'-4" x 7 1/2"	36" & 42"	0.64±
7'-4"	6'-8" x 6'-4" x 7 1/2"	48" & 54"	0.77±
8'-4"	7'-8" x 6'-4" x 7 1/2"	60" & 66"	0.90±

THE CITY OF WICHITA

CITY ENGINEER'S OFFICE
CITY HALL - SEVENTH FLOOR
465 NORTH MARK STREET
WICHITA, KANSAS 67202
(316) 268-4501
(316) 268-4114 FAX

STANDARD TYPE 1-A
CURB INLET
OPENING = 6" x 5'-0"

M. E. LINDEBAK P.E. - CITY ENGINEER

PROJECT NUMBER: 488-876PSS INDEX CODE: 007851

DATE: MAR 96 SHEET 4 OF 4