

PRIVATE STORM SEWER TO SERVE LOTS 18-22, BLOCK 8 MARTINSON'S 7TH ADDITION AND LOTS 19-23, BLOCK 5, JUNCTION TOWN CO. ADDITION

**PROJECT NO: 905PPS
INDEX CODE: 607861**



SHEET INDEX

1. TITLE SHEET/GENERAL NOTES
2. PLAN/PROFILE
3. DROP INLET DETAILS

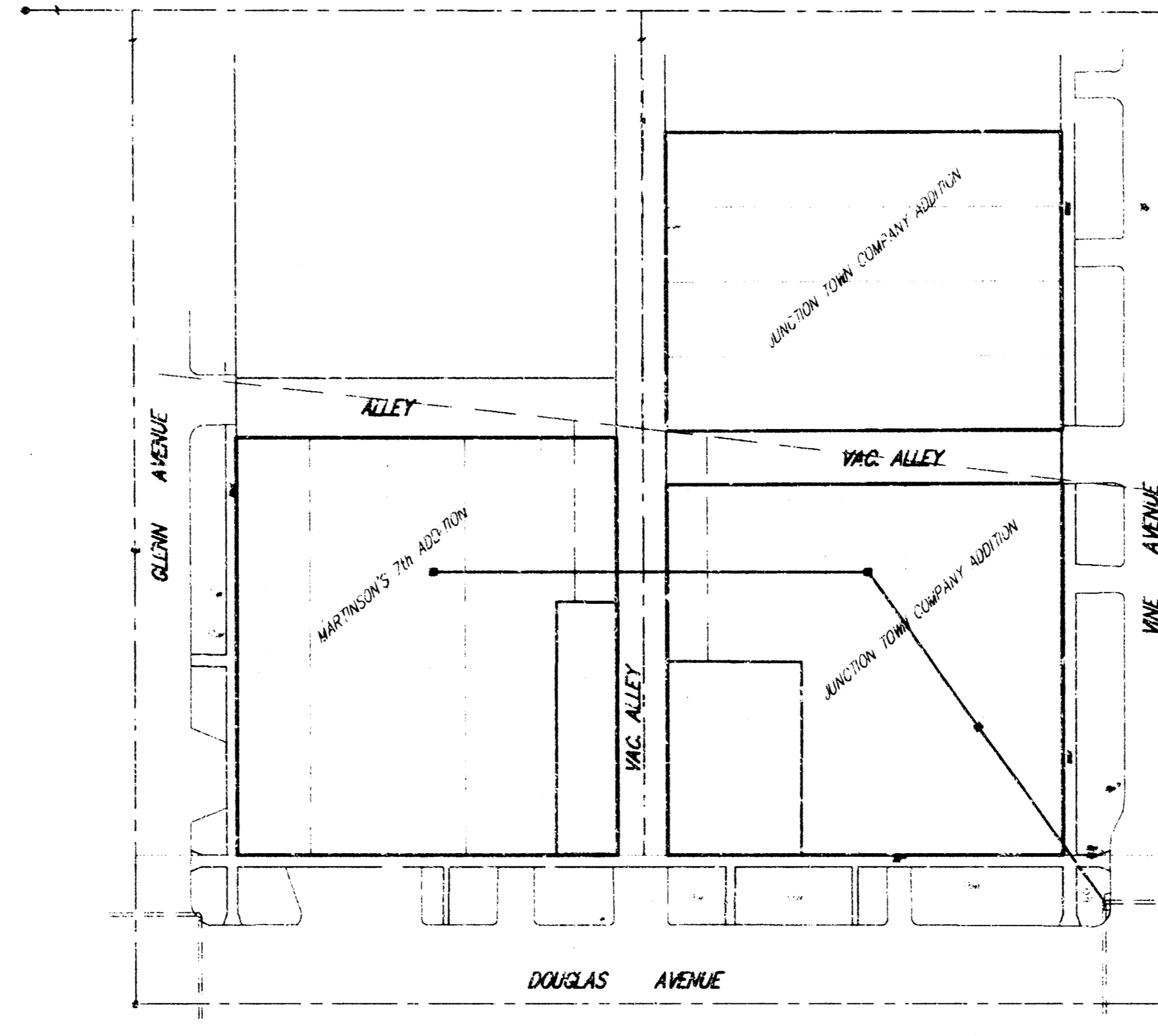
GENERAL NOTES

1. Contractor will be required to provide a minimum notice of 48 hours to utility companies prior to starting any excavation as follows:

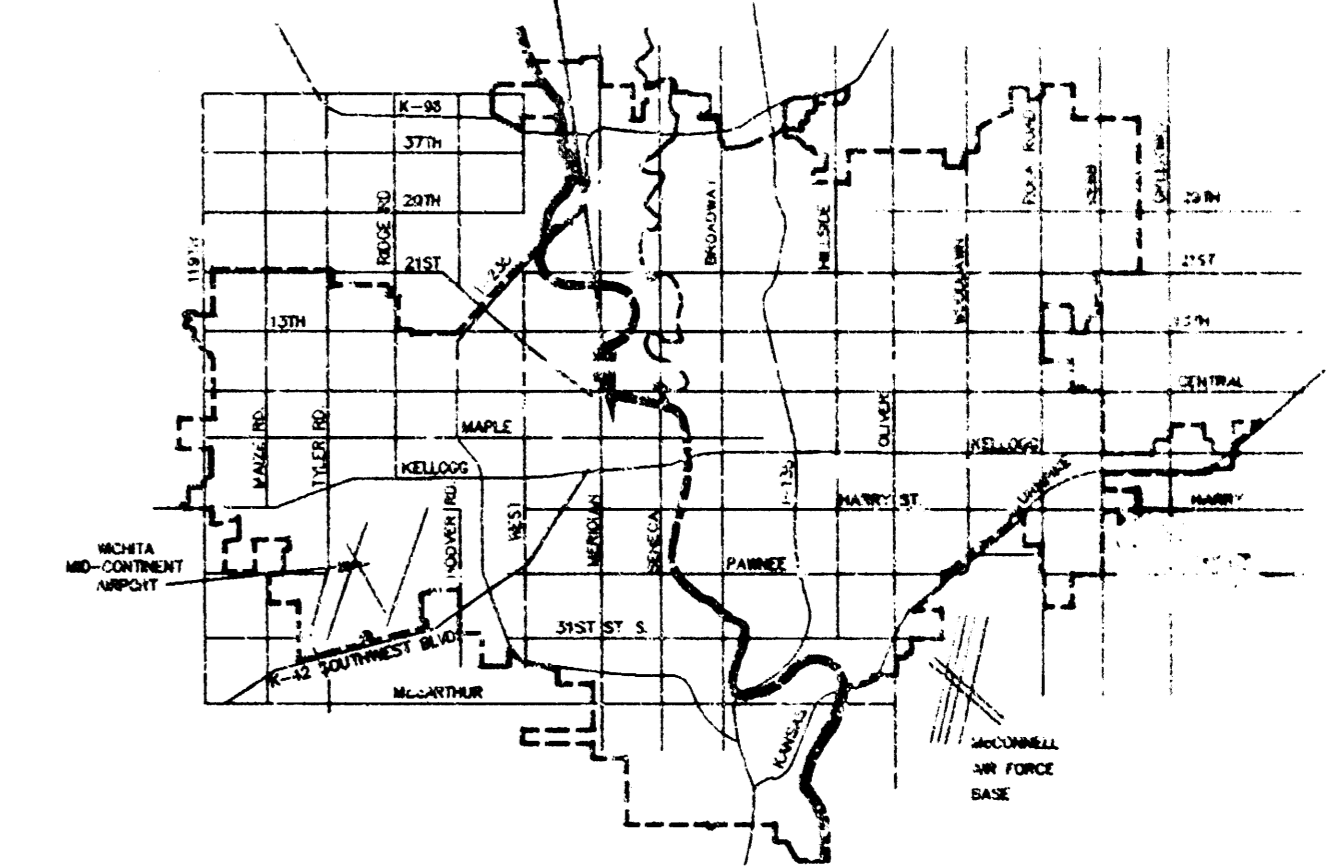
Kansas One-Call	687-2470
-----------------	----------

The Contractor must notify the following in case of an emergency:

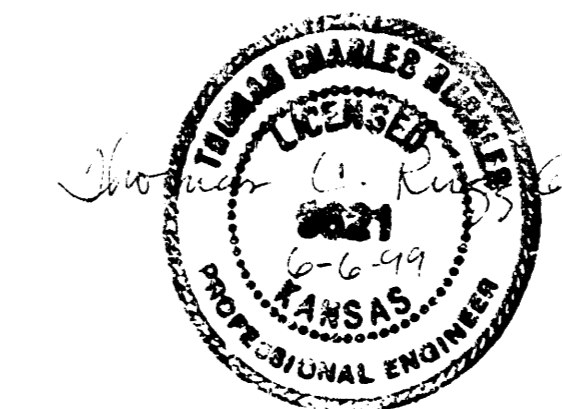
Multimedia	262-4270 or 263-2061
Kansas Gas Service	353-8650
KGE	383-8600
Peoples Natural Gas Company	942-8350 or 263-8161
Southwestern Bell Telephone Company	1-517-2611
City of Wichita Water Department	253-4908
City of Wichita Sewer Maintenance	268-4071
2. All work and materials on this project shall conform to City of Wichita standard specifications for Sewer Construction, except that the Contractor may use Advance Drainage Systems Ultra pipe or approved equal, or alternate drop inlet design approved by the Engineer.
3. No roof drains are to be connected to this storm sewer except by permit from the Office of Central Inspection.
4. Two-way traffic on Vine and Douglas streets shall be maintained during construction.



PROJECT LOCATION



Booked
E-5
8/27/03
RDL



BENCH MARK:

BENCHMARK
CITY OF WICHITA INTERSECTION GLENN AND MAPLE
ELEV = 109.14

APPROVED AS NOTED
BY CITY ENGINEER OF WICHITA

Sanitary Sewers _____
Storm Sewers VR 8/17/01
Driveway Approaches _____
Water Mains _____
Paving _____

NOTE TO CONTRACTORS

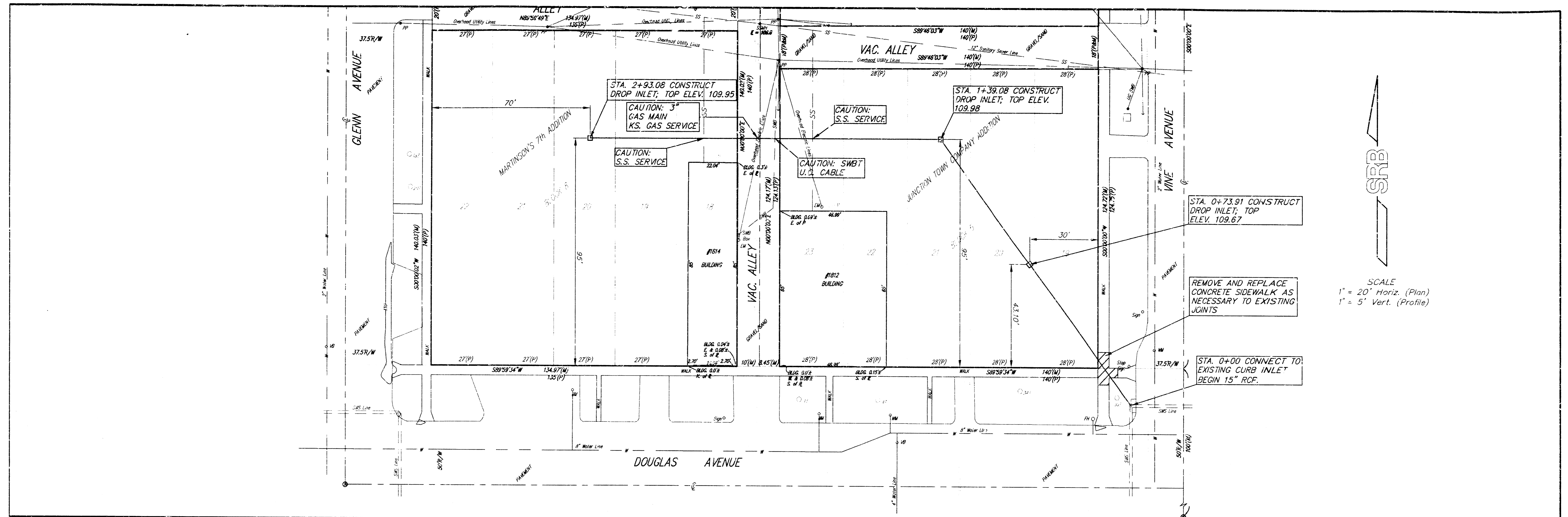
Inspection and testing for this project are to be provided by a Licensed Consulting Engineering Firm under contract with the Owner/Developer. Said inspection to be in accordance with the City of Wichita standard construction engineering practices and certified by a Licensed Professional Engineer. No work shall be performed in dedicated easements or public right-of-way by the Contractor without such inspection, nor shall any work be commenced without written authorization by the City Engineer.

1.390E

**CITY OF WICHITA, KANSAS
MICHAEL E. LINDEBAK - CITY ENGINEER**

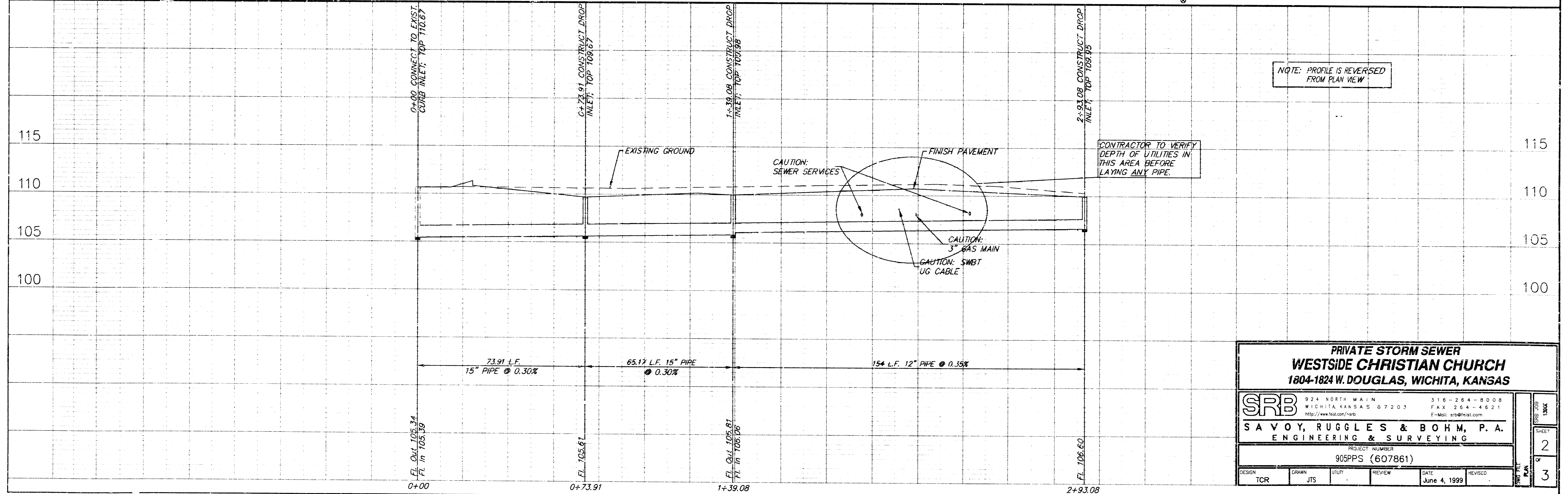
SRB 924 NORTH MAIN
WICHITA, KANSAS 67203 316-264-8005
FAX 316-264-4821

SAVOY, RUGGLES & BOHM, P. A.
ENGINEERING & SURVEYING



SRB

SCALE
 1" = 20' Horiz. (Plan)
 1" = 5' Vert. (Profile)



**PRIVATE STORM SEWER
 WESTSIDE CHRISTIAN CHURCH
 1804-1824 W. DOUGLAS, WICHITA, KANSAS**

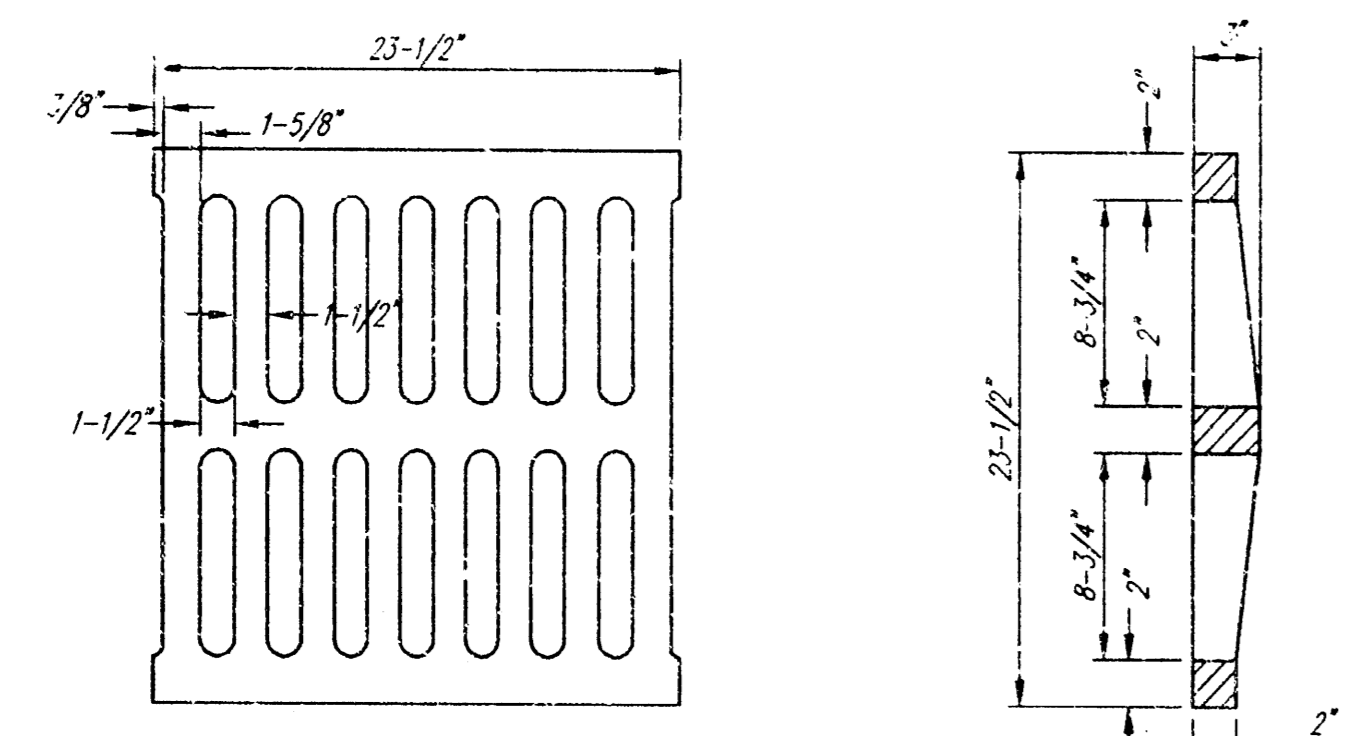
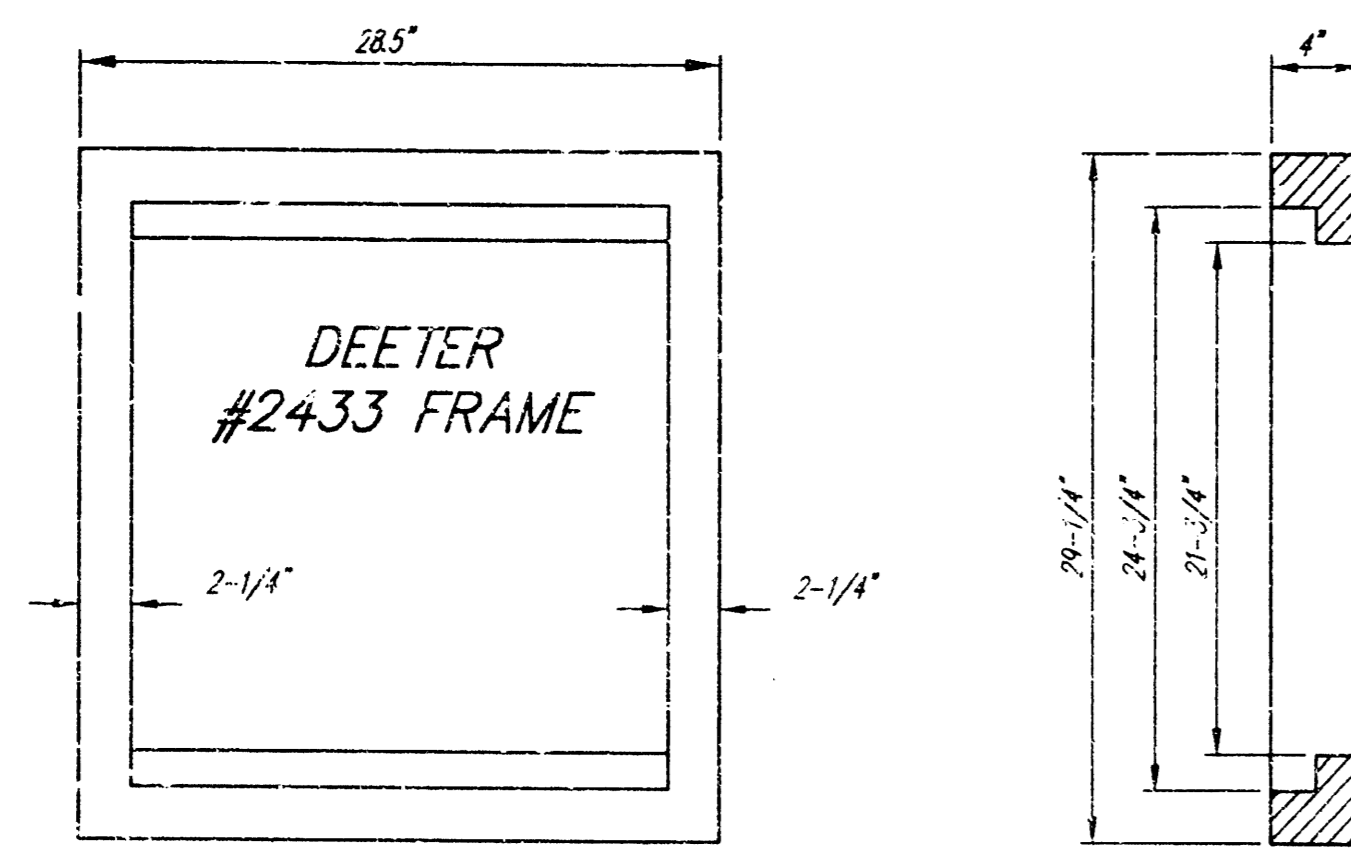
SRB 924 NORTH MAIN 316-264-8008
 WICHITA, KANSAS 67203 FAX 264-4621
 http://www.srb.com/srb E-Mail: srb@srbc.com

**SAVOY, RUGLES & BOHM, P. A.
 ENGINEERING & SURVEYING**

PROJECT NUMBER
 905PPS (607861)

DESIGN	TCR	DRAWN	JTS	UTILITY	REVIEW	DATE	REVISION
						June 4, 1999	

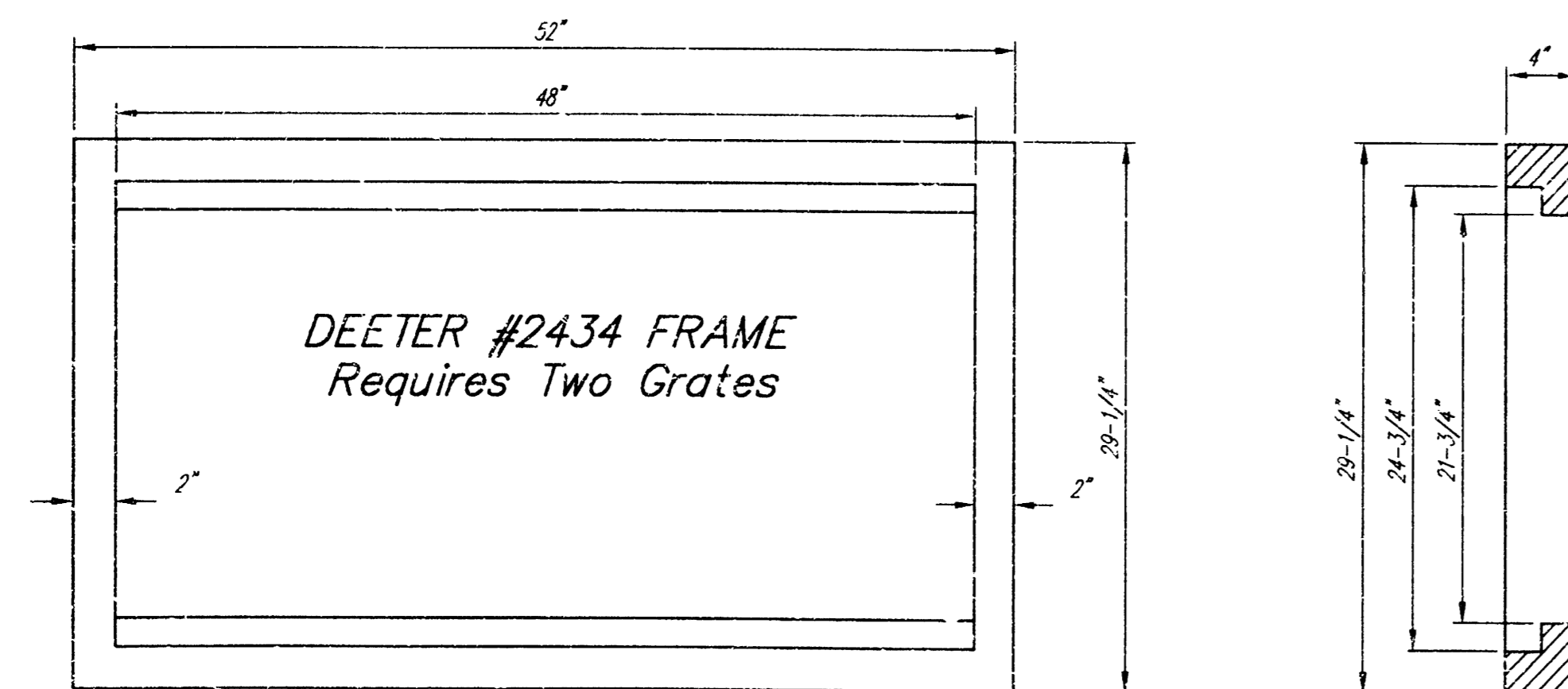
SHEET
 2
 OF
 3



DEETER #2433 GRATE

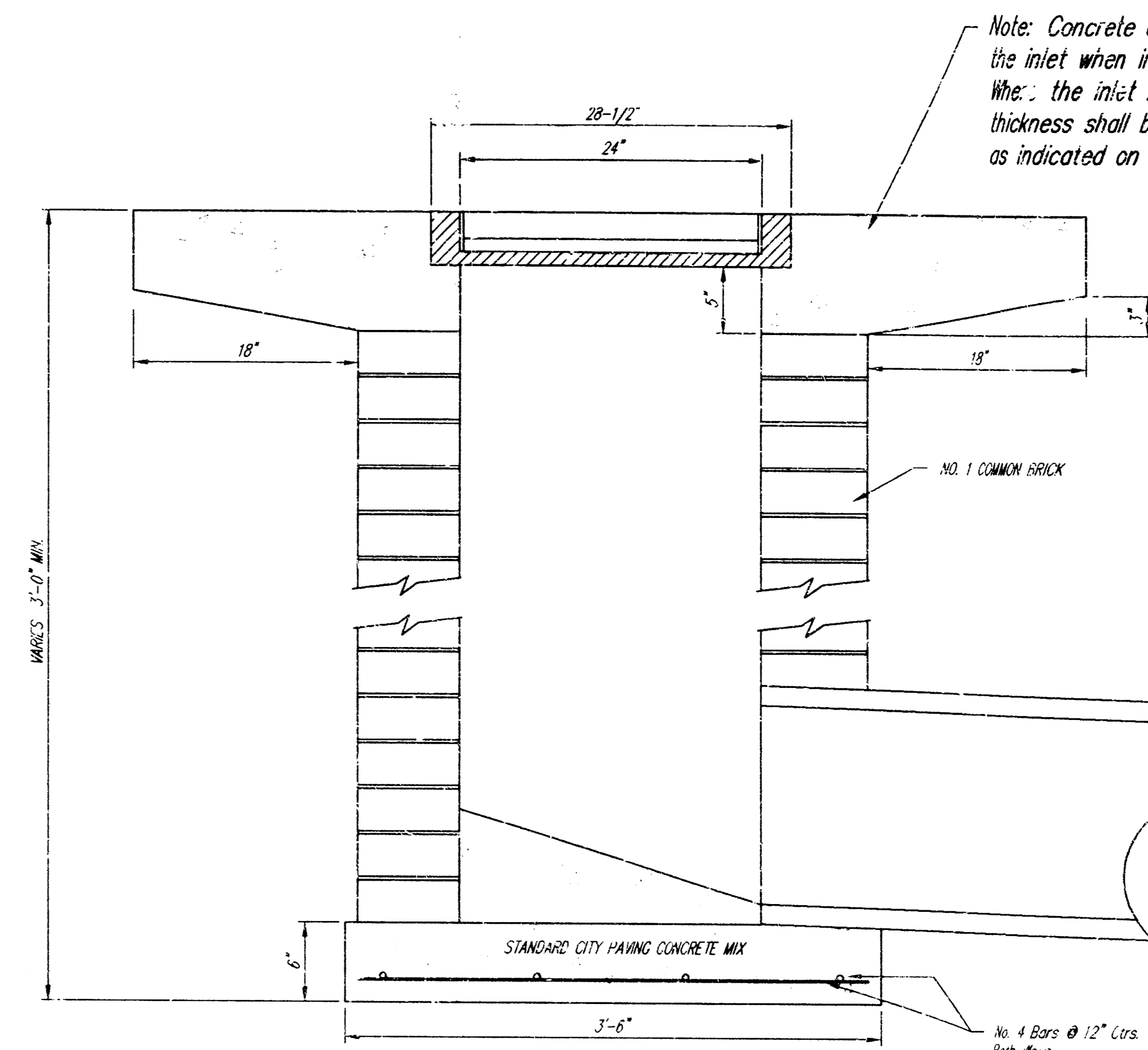
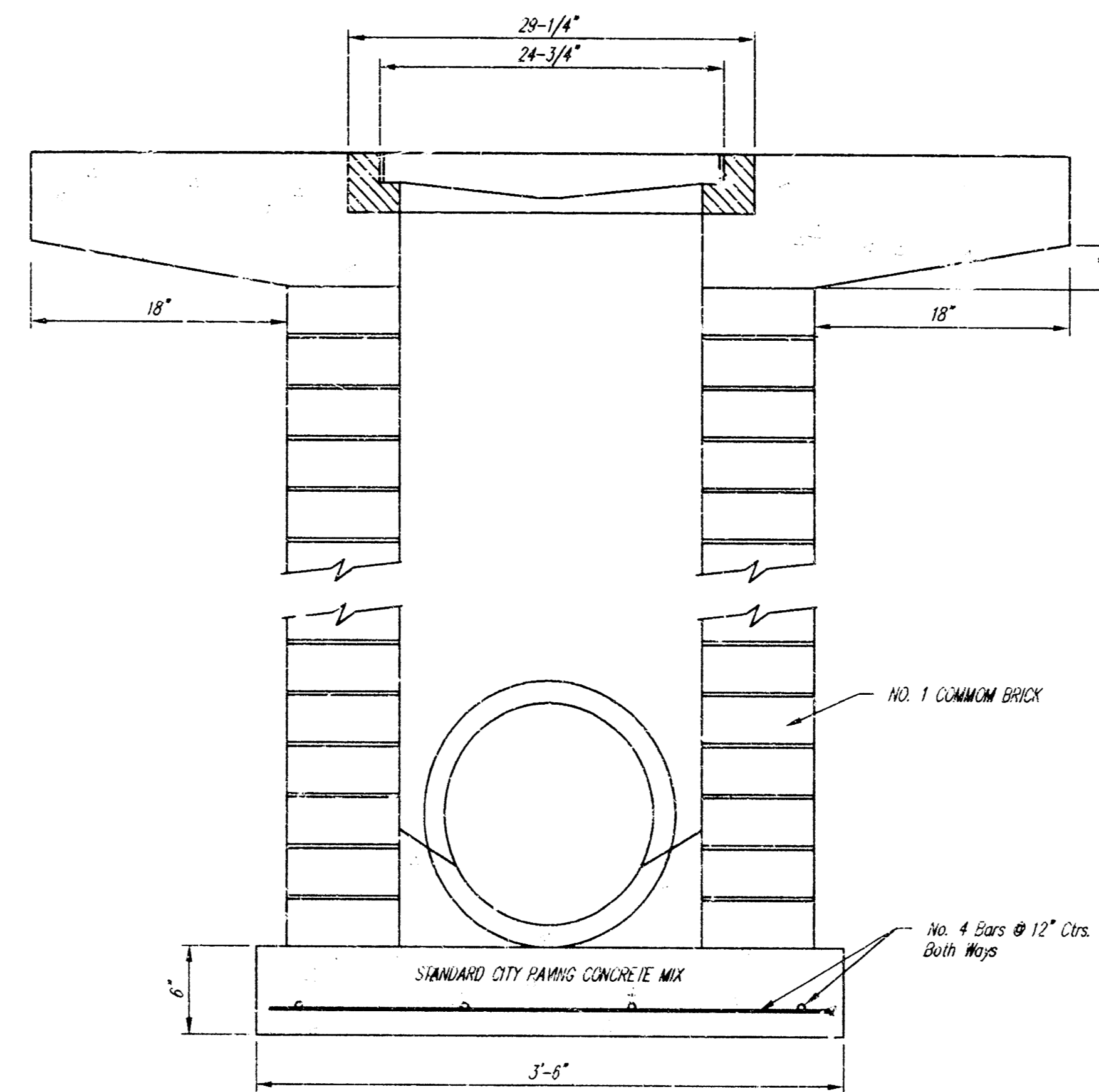
24" x 24" Frame and Grate Detail

NOTE: Grates shall be imprinted on the top surface with "CITY OF WICHITA" using letters at least 1" in height. Other marking methods may be approved by the engineer.

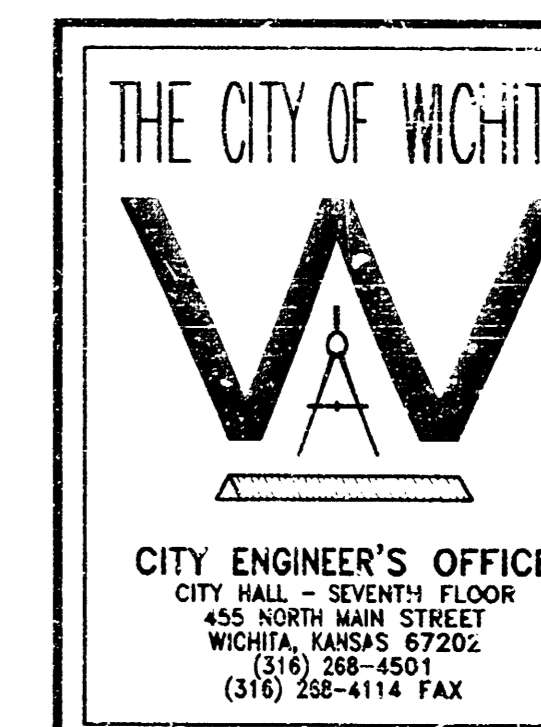
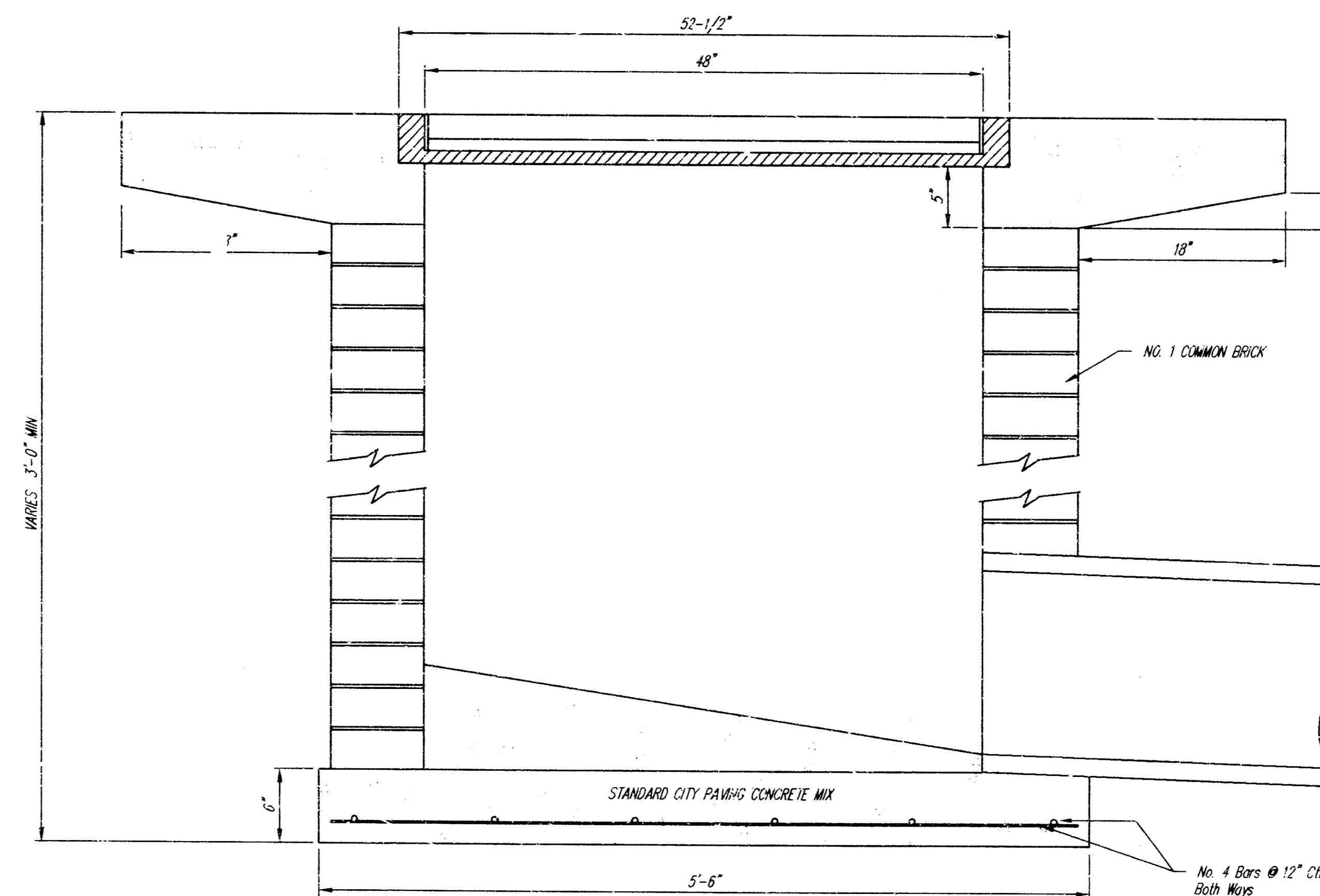


DEETER #2434 FRAME
Requires Two Grates

Double 24" x 24" Frame Detail



Note: Concrete apron shall be constructed around the inlet when inlet is located in an unpaved area. Where the inlet is adjacent to pavement, the pavement thickness shall be tapered to the inlet in 18 inches as indicated on the detail.



DROP INLET
2'x2' / 2'x4'

M. E. LINDEBAK P.E. - CITY ENGINEER

PROJECT NUMBER
905PPS

INDEX CODE
607861

DATE
MAR 96

SHEET 3 OF 3

18 03 03 13