

# PRIVATE STORM SEWER TO SERVE LOTS 25 & 26, BLOCK 1 WILLIAMSBURG, AN ADDITION TO WICHITA, SEDGWICK COUNTY, KANSAS

PROJECT NO: 907 PPS

INDEX CODE: 607861

SRB  
SCALE:  
1"=150'

## SHEET INDEX

1. TITLE SHEET/GENERAL NOTES
2. PLAN/PROFILE
3. DROP INLET DETAILS
4. SHALLOW TYPE 'D' MANHOLE DETAILS

## GENERAL NOTES

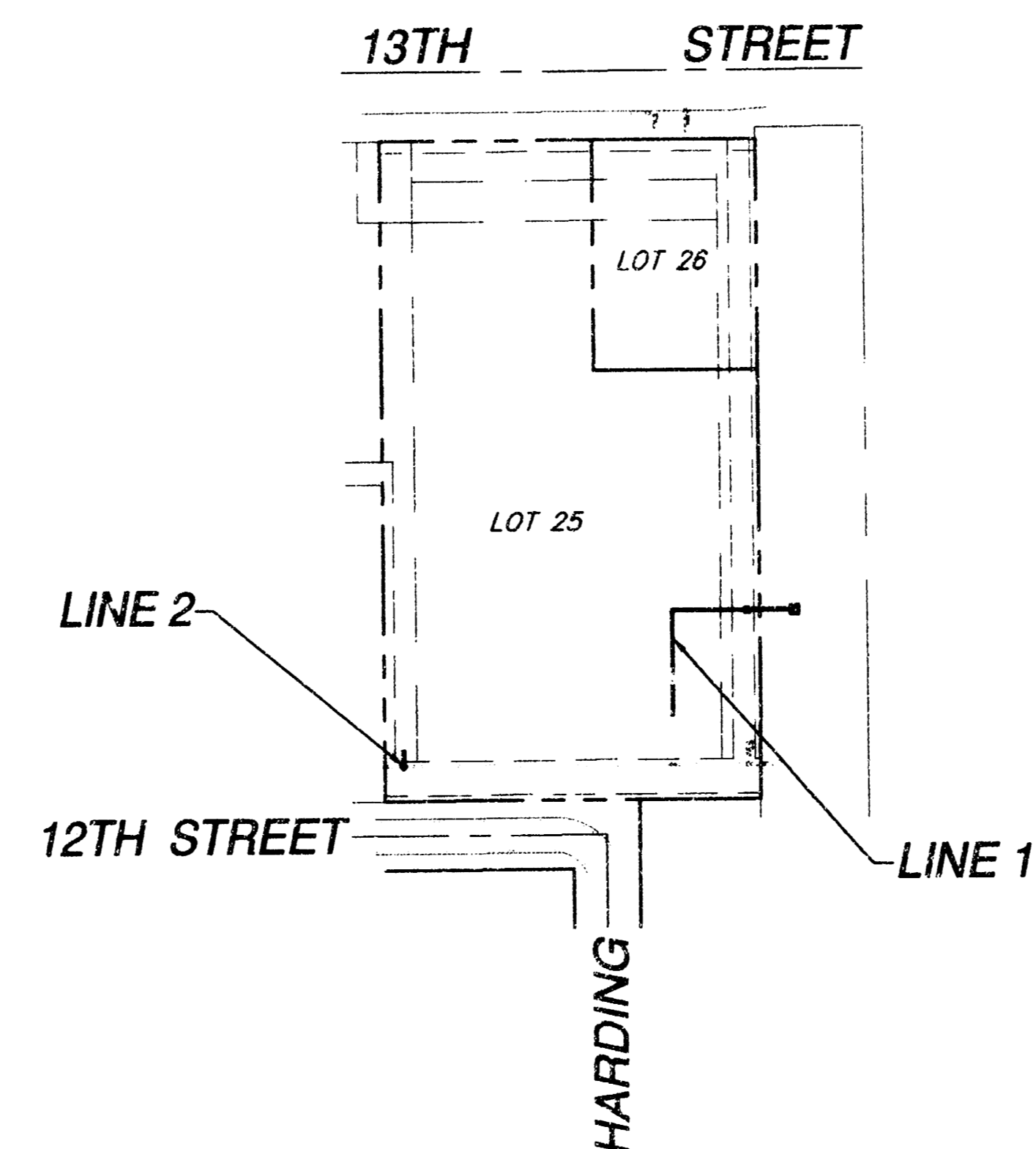
1. Contractor will be required to provide a minimum notice of 48 hours to utility companies prior to starting any excavation as follows:

Kansas One-Call 687-2470

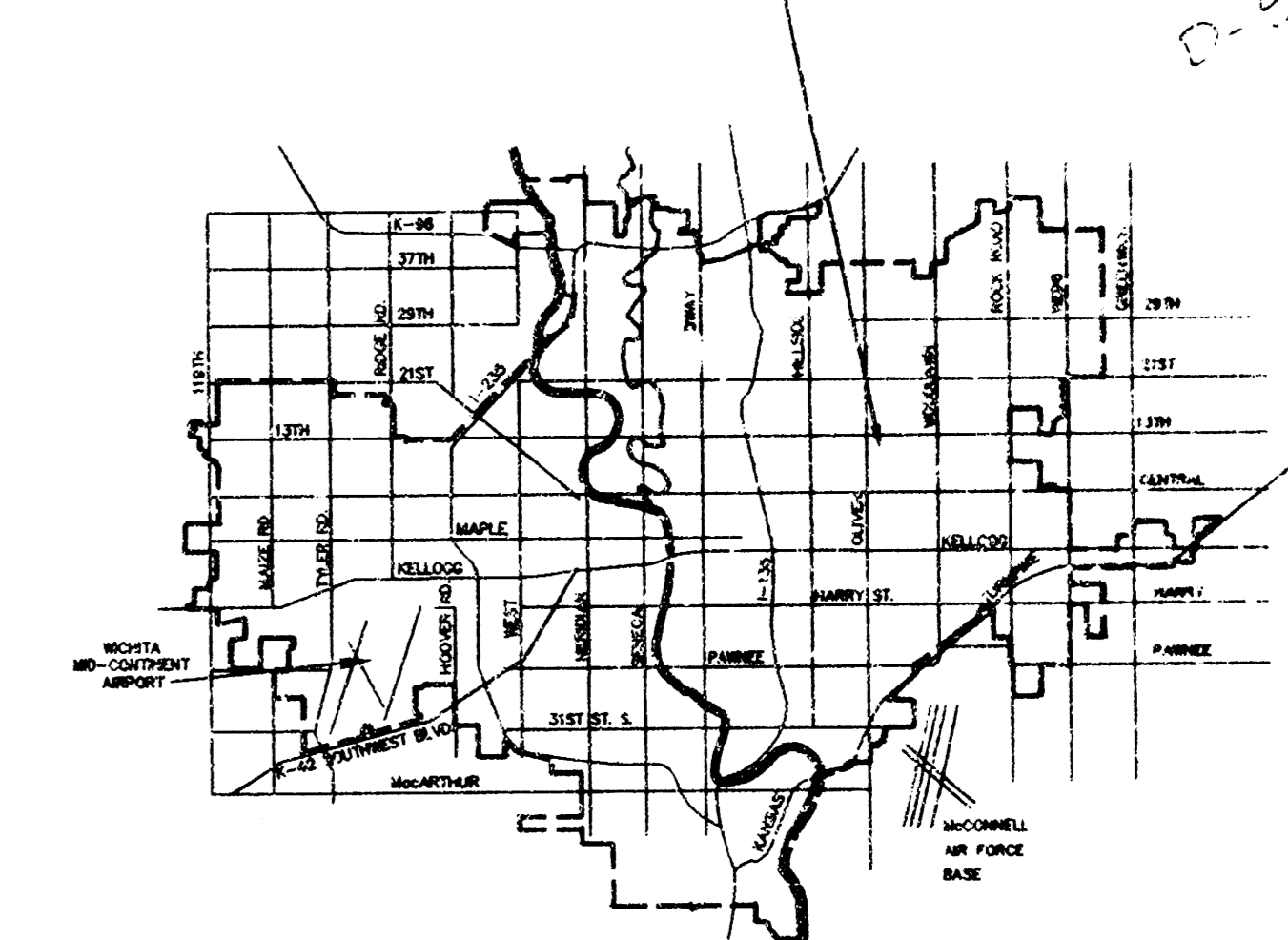
The Contractor must notify the following in case of an emergency:

Multimedia	262-4270 or 263-2061
Kansas Gas Service	383-8650
KGE	383-8600
Peoples Natural Gas Company	942-8350 or 263-8161
Southwestern Bell Telephone Company	1-517-2611
City of Wichita Water Department	268-4308
City of Wichita Sewer Maintenance	268-4071

2. All work and materials on this project shall conform to City of Wichita Standard Specifications for Sewer construction, except that the contractor may use Advance Drainage Systems Ultra pipe or equal and alternate drop inlet design approved by the Engineer.
3. Traffic will not be affected by construction of this project.
4. No roof drains are to be connected to this storm sewer except by permit from the Office of Central Inspection.
5. All areas disturbed by construction shall be seeded with rye Rebel II Fescue grass at a rate of 350 lbs./acre immediately following construction in that area.



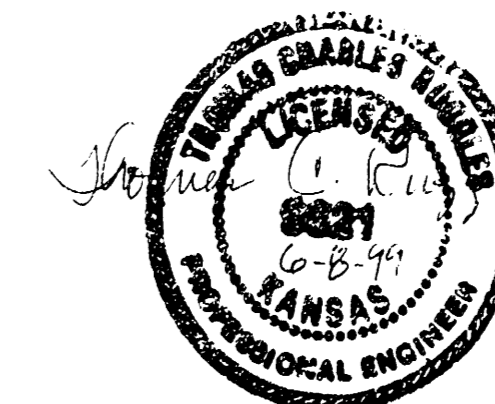
## PROJECT LOCATION



## BENCH MARK:

"□" CUT IN TOP OF CURB AT N.W. COR.  
LOT 25, BLOCK 1 WILLIAMSBURG ADDITION  
ELEV. 204.41

As-BUILTS 04-11-2001  
Inspection: Tim Kelly / Savoy Ruggles & Bohm  
Contractor: Bob Stephen & Sons  
Revised: 09-07-1999  
T.V.D.: Utility Maintenance - passed



CITY OF WICHITA, KANSAS  
MICHAEL E. LINDEBAK - CITY ENGINEER

Revised 09/07/1999

APPROVED AS NOTED  
BY CITY ENGINEER OF WICHITA

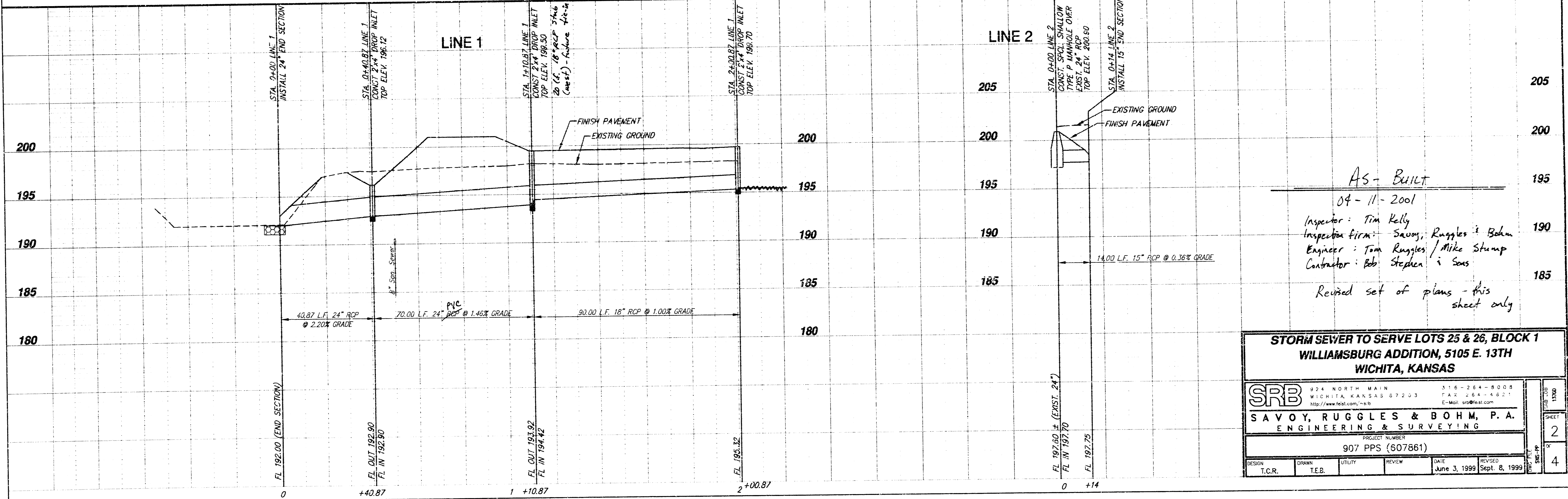
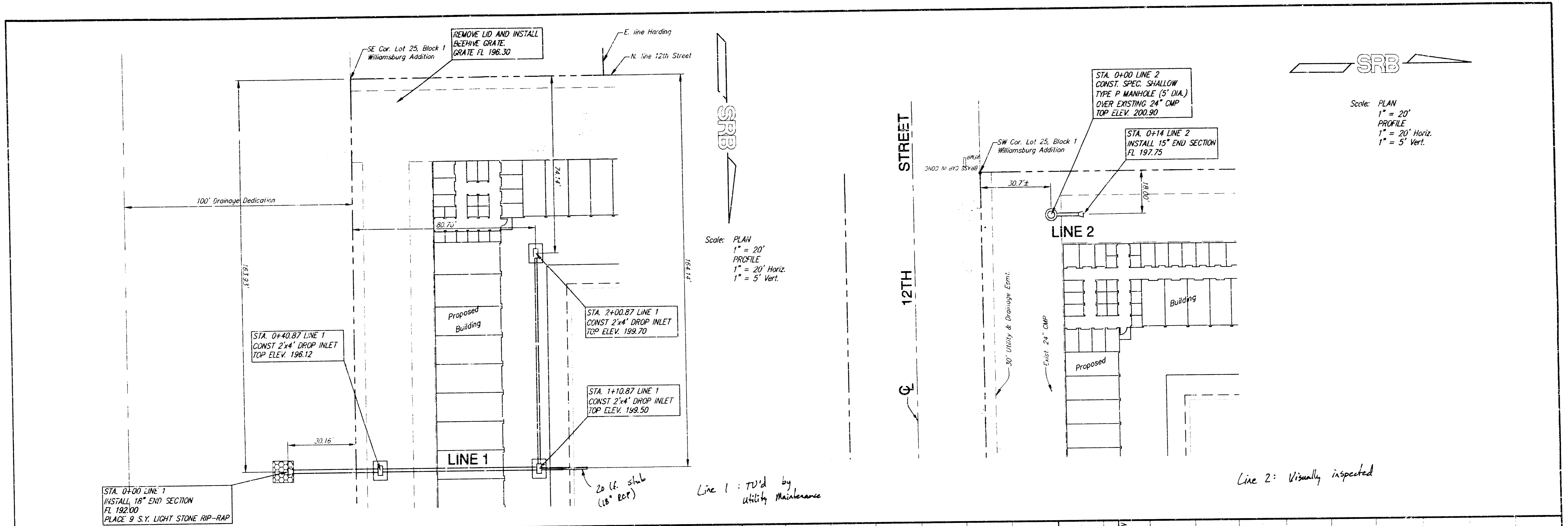
Sanitary Sewers \_\_\_\_\_  
Storm Sewers VRH 6/8/99  
Driveway Approaches \_\_\_\_\_  
Water Mains \_\_\_\_\_  
Paving \_\_\_\_\_

NOTE TO CONTRACTORS

Inspection and testing for this project are to be provided by a Licensed Consulting Engineering Firm under contract with the Owner/Developer. Said inspection to be in accordance with the City of Wichita standard construction engineering practices and certified by a Licensed Professional Engineer. No work shall be performed in dedicated easements or public right-of-way by the Contractor without such inspection, nor shall any work be commenced without written authorization by the City Engineer.

SRB 324 NORTH MAIN 316-264-8008  
WICHITA, KANSAS 67203 FAX 264-5621  
SAVOY, RUGGLES & BOHM, P. A.  
ENGINEERING & SURVEYING

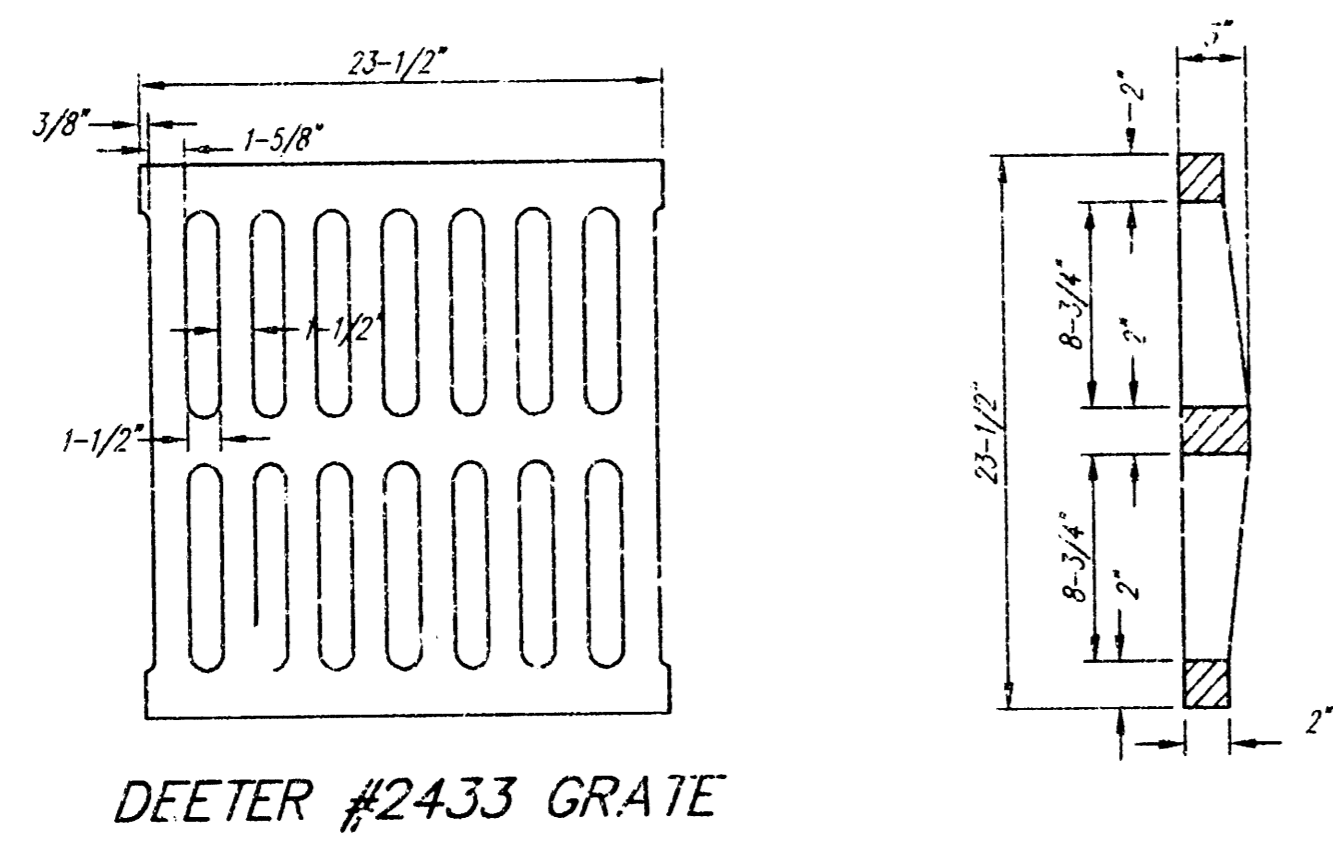
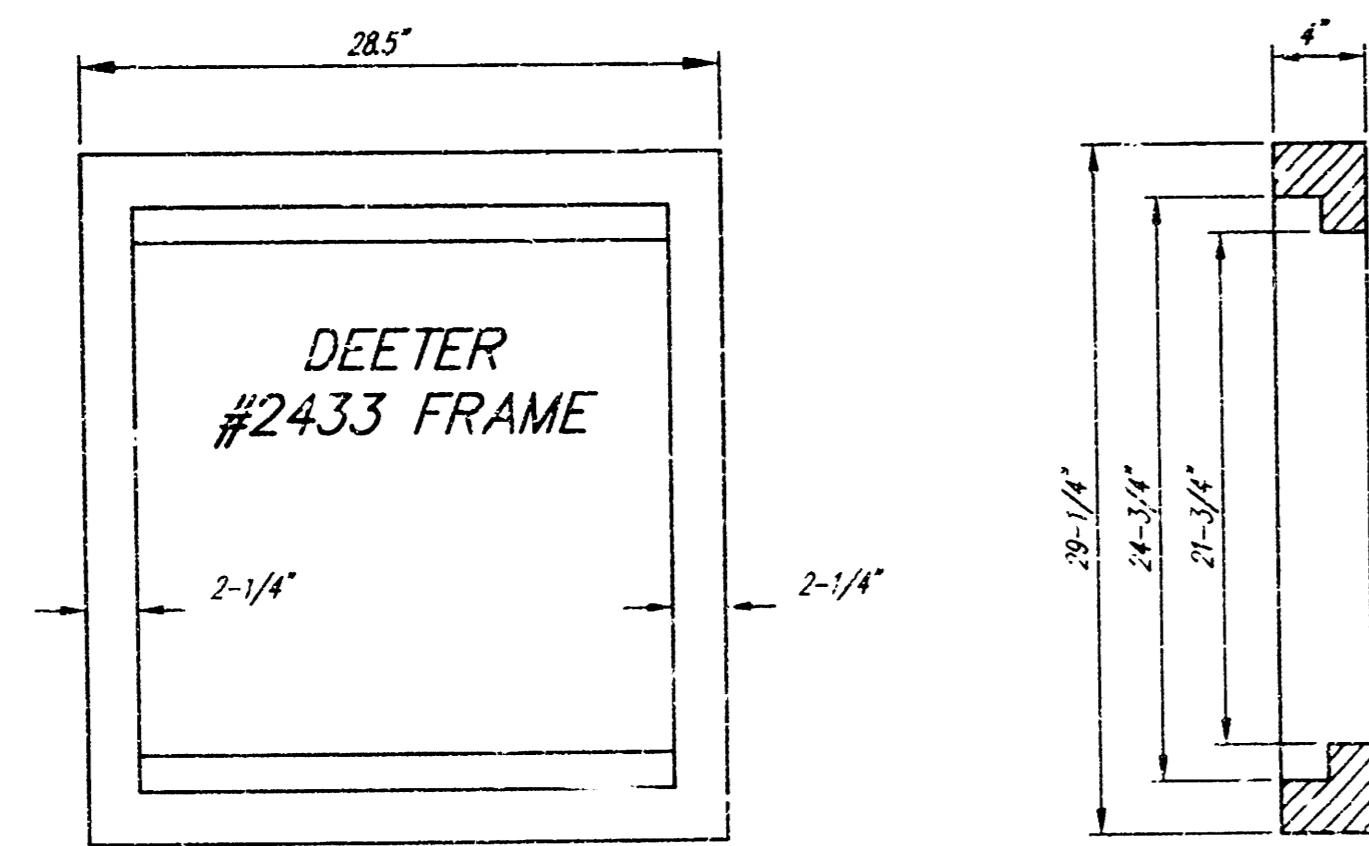
1370E



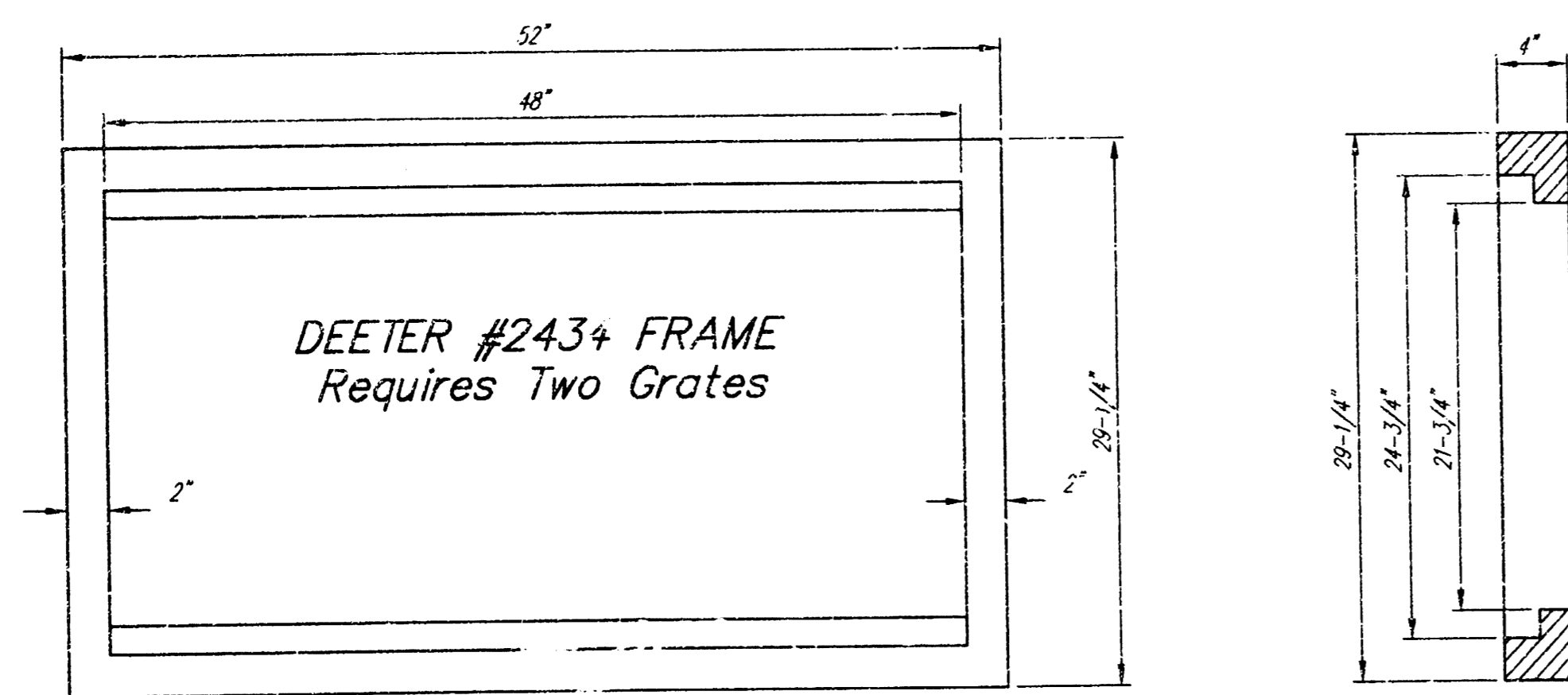
AS-BUILT  
 04-11-2001  
 Inspector: Tim Kelly  
 Inspection firm: Savoy, Ruggles & Bohm  
 Engineer: Tom Ruggles / Mike Stump  
 Contractor: Bob Stephen & Sons  
 Revised set of plans - this sheet only

**STORM SEWER TO SERVE LOTS 25 & 26, BLOCK 1  
 WILLIAMSBURG ADDITION, 5105 E. 13TH  
 WICHITA, KANSAS**

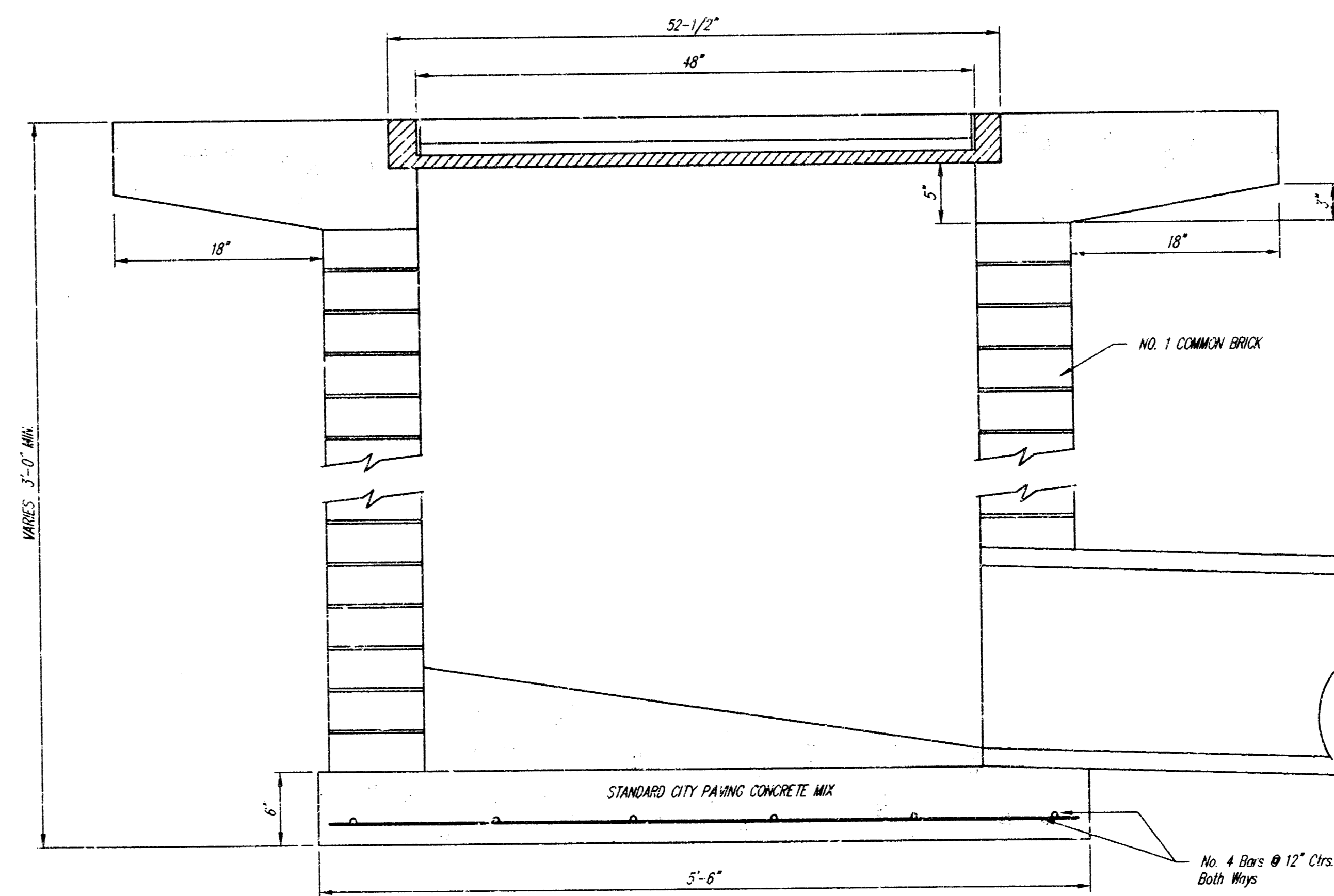
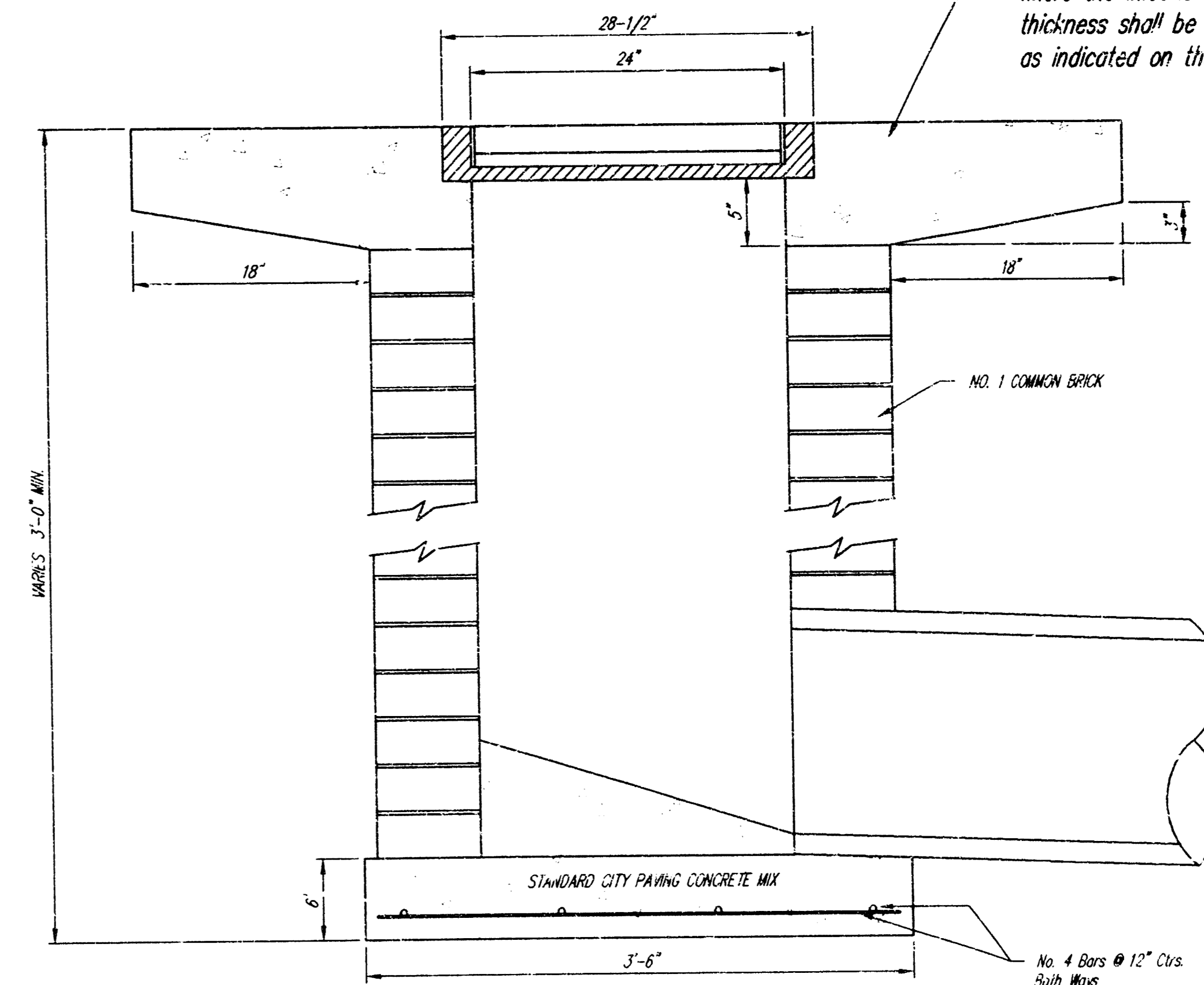
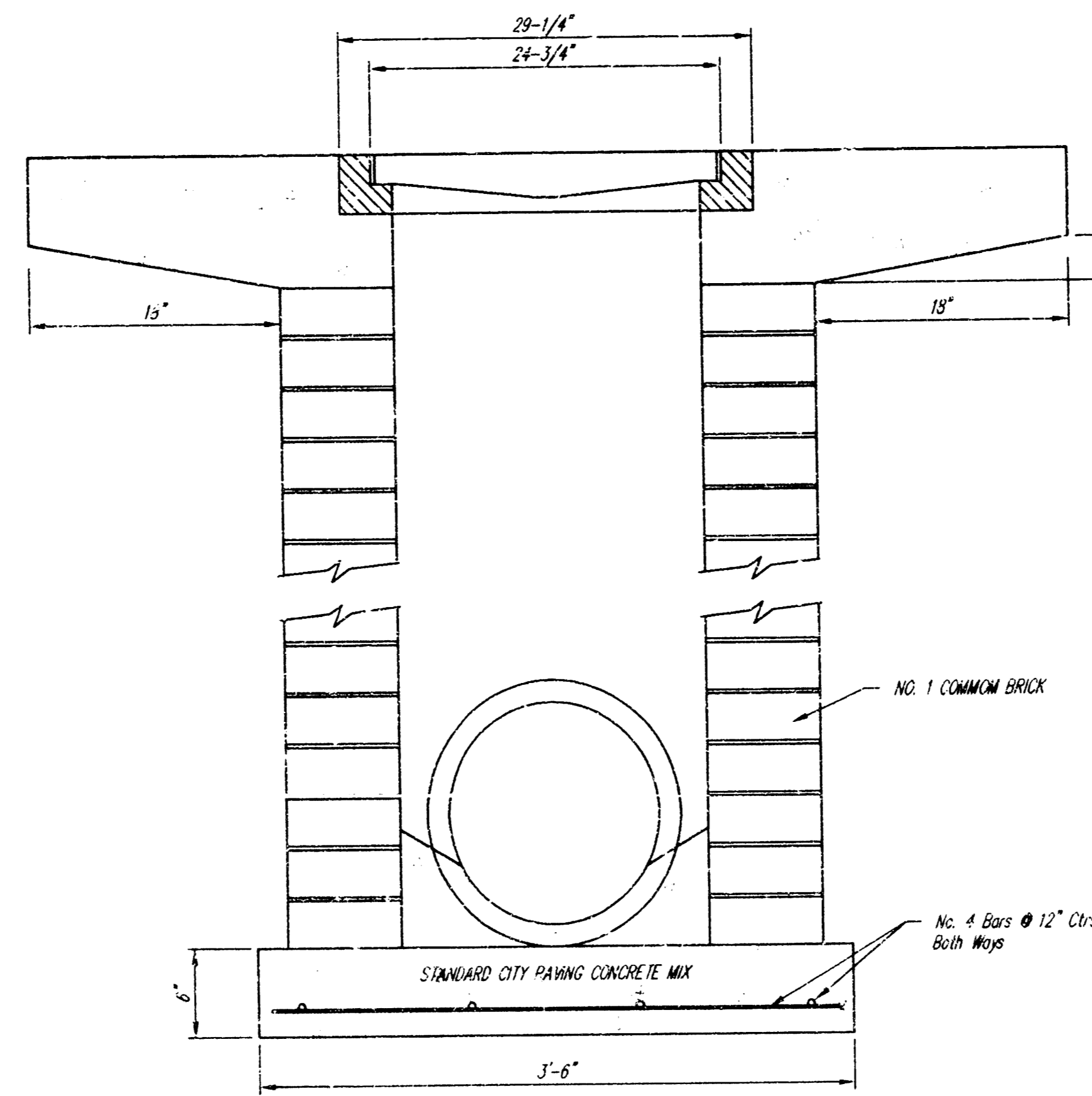
		924 NORTH MAIN WICHITA, KANSAS 67203 http://www.fest.com/~srb	316-264-8008 FAX 264-4821 E-Mail: srbs@fest.com
<b>SAVOY, RUGGLES &amp; BOHM, P. A.</b> ENGINEERING & SURVEYING			
PROJECT NUMBER <b>907 PPS (S07861)</b>			
DESIGN	DRAWN	UTILITY	REVIEW
T.C.R.	T.E.B.		
DATE		REVISED	
June 3, 1999		Sept. 8, 1999	



24" x 24" Frame and Grate Detail



Double 24" x 24" Frame Detail



<p>THE CITY OF WICHITA</p> <p>CITY ENGINEER'S OFFICE CITY HALL - SEVENTH FLOOR 400 NORTH MAIN STREET WICHITA, KANSAS 67202 (316) 268-4501 (316) 268-4114 FAX</p>	<b>DROP INLET</b> 2'x2' / 2'x4'	
	M. E. LINDEBAK P.E. - CITY ENGINEER	
	PROJECT NUMBER 907 PPS	INDEX CODE 607861
	DATE MAR 96	SHEET 3 OF 4

