

STORM WATER SEWER EXTENSIONS TO SERVE

LOT 1, BLOCK 2, KUHLMAN ADDITION CITY OF WICHITA, KANSAS PROJECT NO. 910 PPS (607861)

GENERAL NOTES

1. Contractor will be required to provide a minimum advance notice of twenty-four (24) hours to utility companies prior to starting any excavation as follows:

Kansas One-Call 687-2470

The Contractor must notify the following in case of an emergency:

Cablevision	262-4270 or 263-2061
K.G.E. Gas	911
K.G.E. Electric	911
Southwestern Bell Telephone Company	1-571-2611
City of Wichita Water Department	268-4908
City of Andover Sewer Maintenance	733-2621

2. Contractor shall not start work on the project until the project inspector is assigned to the project and is present on the site. Any work done without inspection will be required to be uncovered for inspection.

3. Interurban traffic generated outside the project area and local business or apartment traffic generated within the project area are to be carried through construction as further promulgated by project special provisions.

4. Underground utility service lines and overhead utility pole lines are to be adjusted as necessary by others prior to construction unless the plans specifically call for their adjustment by the Contractor or unless the plans specifically identify a utility to be adjusted by its owner during construction. Existing utilities and their location, as shown on the plans, represent the best information obtainable for design. Location information has been obtained from the various utility companies and is either from company record drawings or company-provided field locations. The Contractor will be required to work around existing utilities within the right-of-way which do not conflict with proposed construction.

5. Rubble from the removal of miscellaneous structures and excess excavation which is to be wasted shall be disposed of on sites to be provided by the Contractor. These sites shall be approved by the Engineer as to suitability, appearance and site location. Locations that, in the opinion of the Engineer, will leave an unsightly appearance will not be approved.

6. All disposal sites must be approved by the Kansas Department of Health and Environment. Material either stockpiled or disposed of in a flood plain would require a Kansas State Board of Agriculture permit. Any material dumped in waters of the United States or wetlands is subject to U.S. Corps permitting regulations. Any material buried or stockpiled beyond approved of Engineers construction limits would require additional archeological investigations unless buried in a previously approved borrow location.

7. The Contractor shall give all property owners and/or tenants of developed property directly adjoining the construction of this project a minimum of ten (10) days advance notice prior to start of construction.

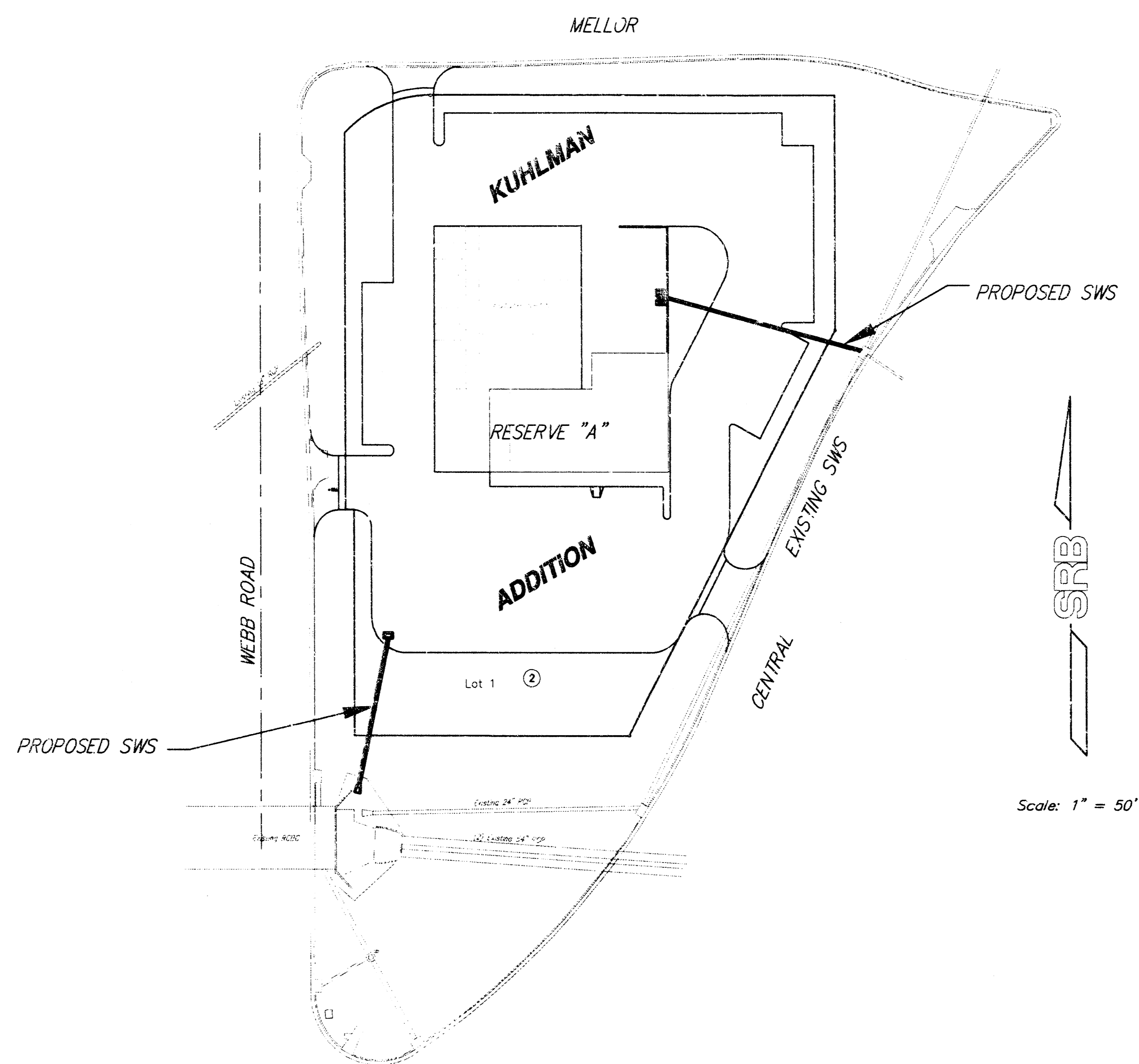
8. The Contractor shall be responsible for preserving property irons. The Contractor will be required to re-establish any property irons which are damaged or destroyed by his construction operations. Such irons shall be re-established by a licensed land surveyor in accordance with state laws.

BENCH MARKS

C.O.W. DISC, 200'± NORTH OF CENTERLINE OF CENTRAL & WEBB, END OF HUB GUARD, WEST SIDE OF WEBB.
ELEV. 174.73

INDEX OF SHEETS

1. TITLE SHEET
2. PLAN & PROFILE
3. DROP INLET DETAILS



*Checked
6/22/99
M. H. ...*

APPROVED AS NOTED
BY CITY ENGINEER OF WICHITA, KANSAS

Storm Sewers VRH 6/18/99

NOTE TO CONTRACTORS

Inspection and testing for this project are to be provided by a Licensed Consulting Engineering Firm under contract with the Owner/Developer. Said inspection to be in accordance with the City of Andover standard construction engineering practices and certified by a Licensed Professional Engineer. No work shall be performed in dedicated easements or public right-of-way by the Contractor without such inspection, nor shall any work be commenced without written authorization by the City Engineer.

*As-builts 10/21/99
Inspected by: SRB*

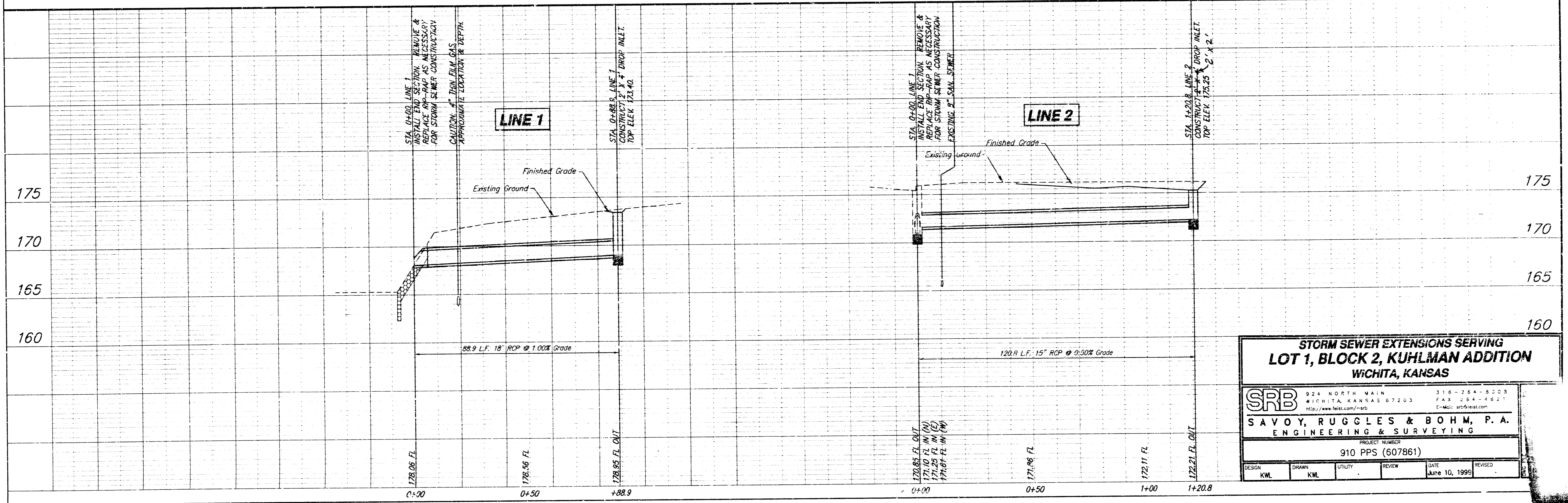
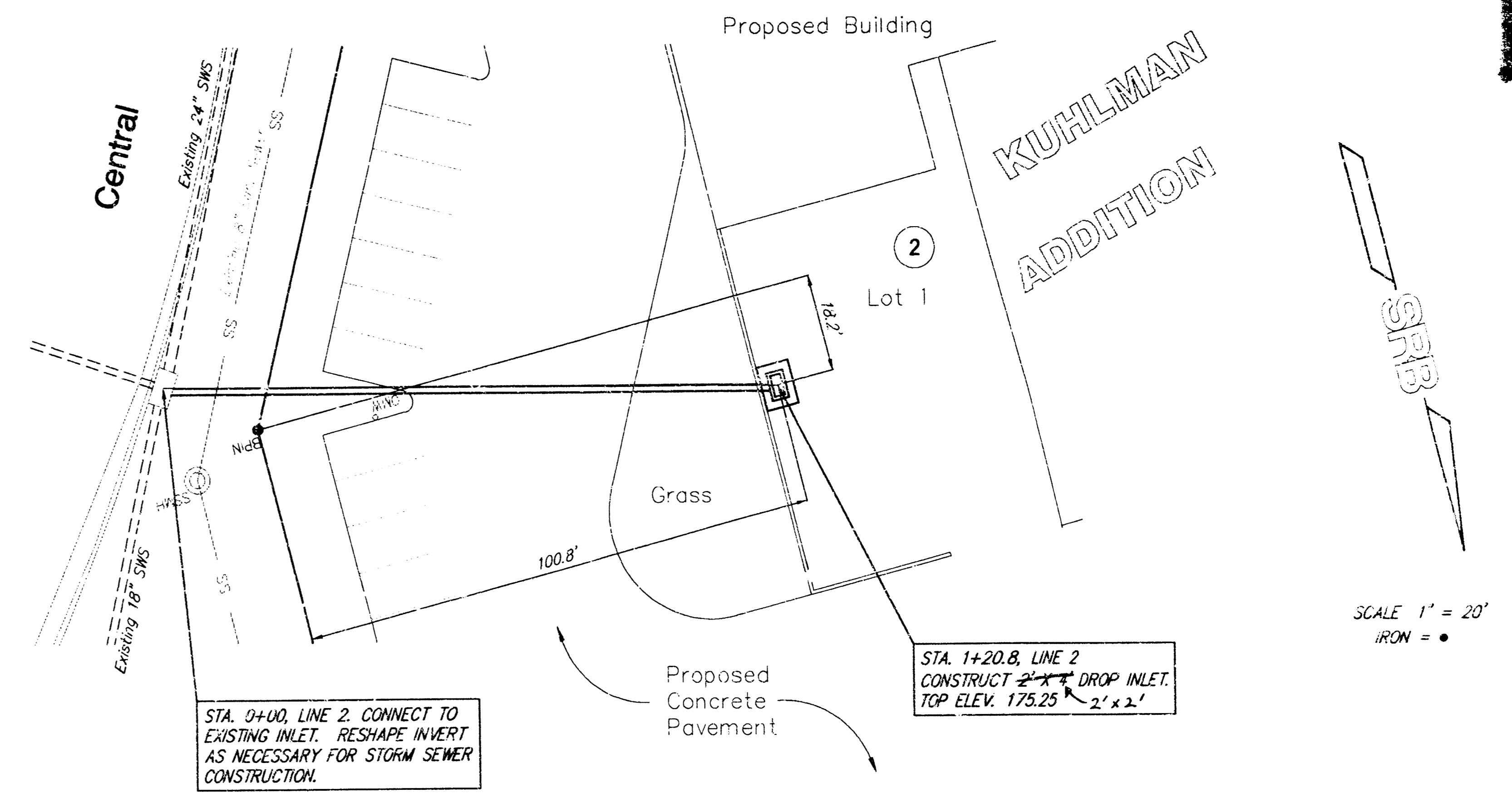
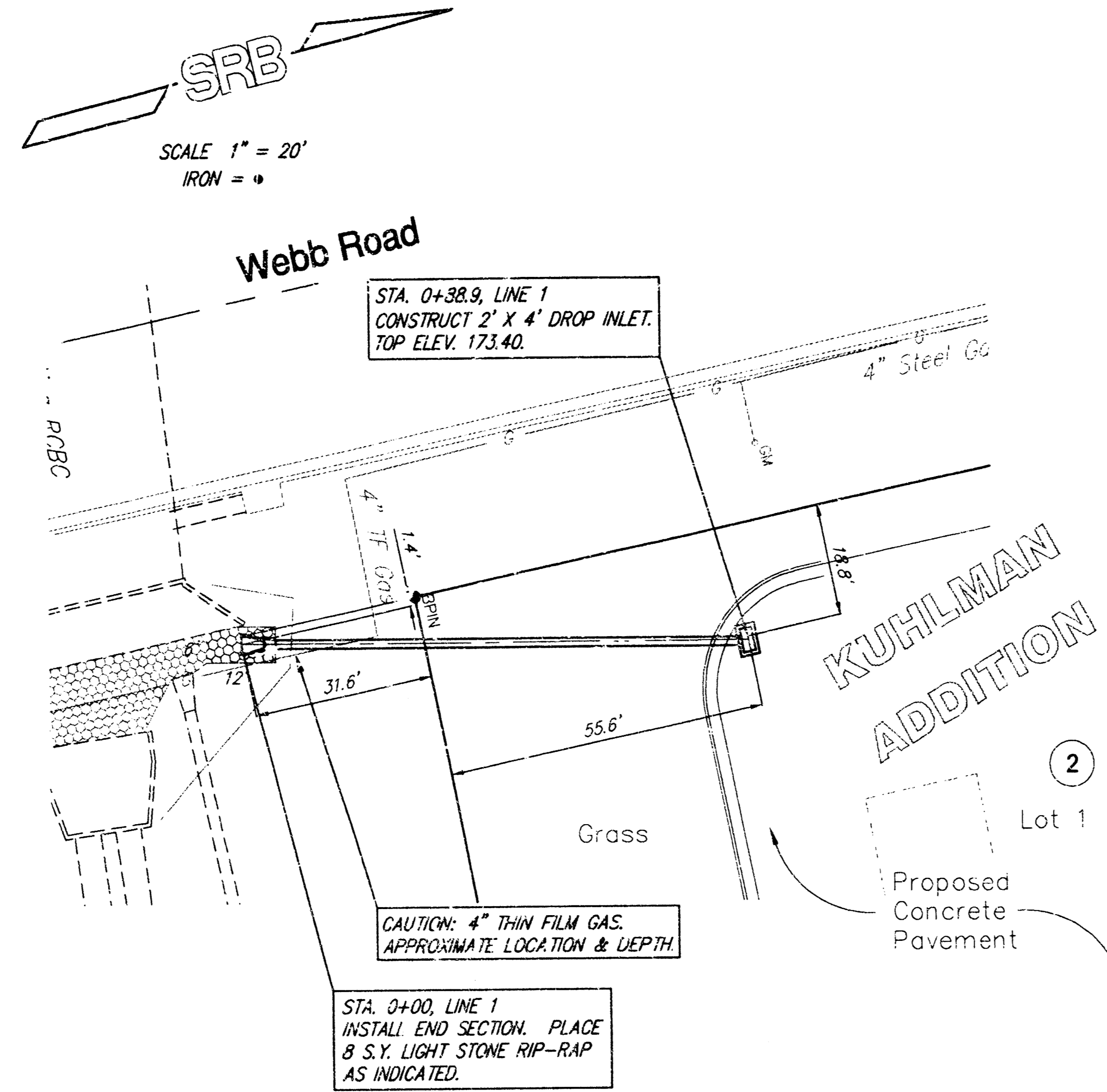
SRB 924 NORTH MAIN WICHITA, KANSAS 67203 316-264-8008 FAX 284-4621
SAVOY, RUGGLES & BOHM, P. A.
ENGINEERING & SURVEYING

DRAINAGE CALCULATIONS

LINE 1
 D.A. = 0.88 acres
 $C_s = 0.80$
 $C_{100} = 0.90$
 $I_s = 4.56$ in/hr
 $I_{100} = 7.37$ in/hr
 $Q_s = 3.2$ cfs
 $Q_{100} = 5.8$ cfs
 Use 18" at 1.00% Grade

LINE 2
 D.A. = 0.53 acres
 $C_s = 0.85$
 $C_{100} = 0.91$
 $I_s = 4.56$ in/hr
 $I_{100} = 7.37$ in/hr
 $Q_s = 2.0$ cfs
 $Q_{100} = 3.6$ cfs
 Use 15" at 0.50% Grade

STREET (SOUTHEAST ENTRANCE)
 D.A. = 0.38 acres
 $C_s = 0.85$
 $C_{100} = 0.91$
 $I_s = 4.56$ in/hr
 $I_{100} = 7.37$ in/hr
 $Q_s = 1.5$ cfs
 $Q_{100} = 2.5$ cfs



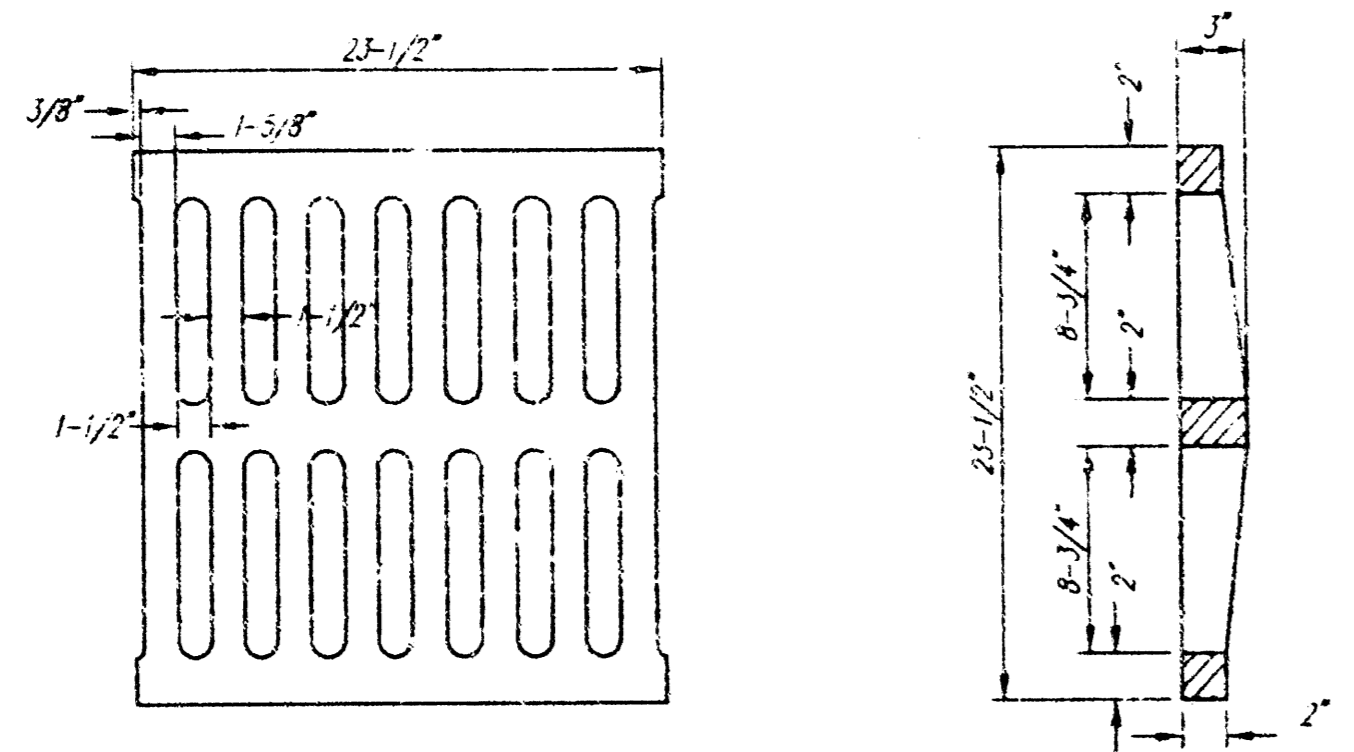
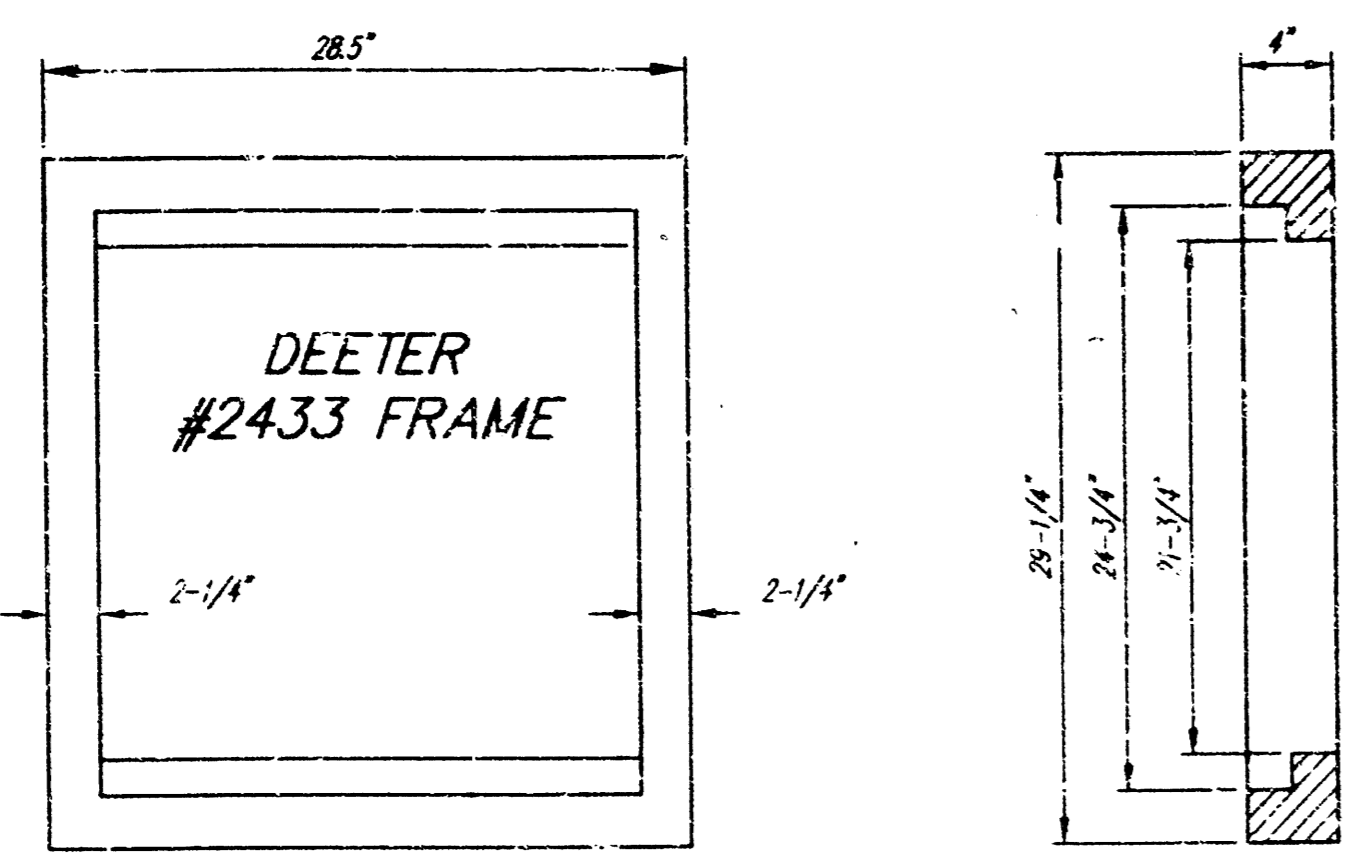
STORM SEWER EXTENSIONS SERVING LOT 1, BLOCK 2, KUHLMAN ADDITION WICHITA, KANSAS

SRB 924 NORTH MAIN WICHITA, KANSAS 67203 316-264-8203 FAX 316-264-4621
 http://www.srb.com/eng

SAVOY, RUGGLES & BOHM, P. A.
 ENGINEERING & SURVEYING

PROJECT NUMBER
 910 PPS (607861)

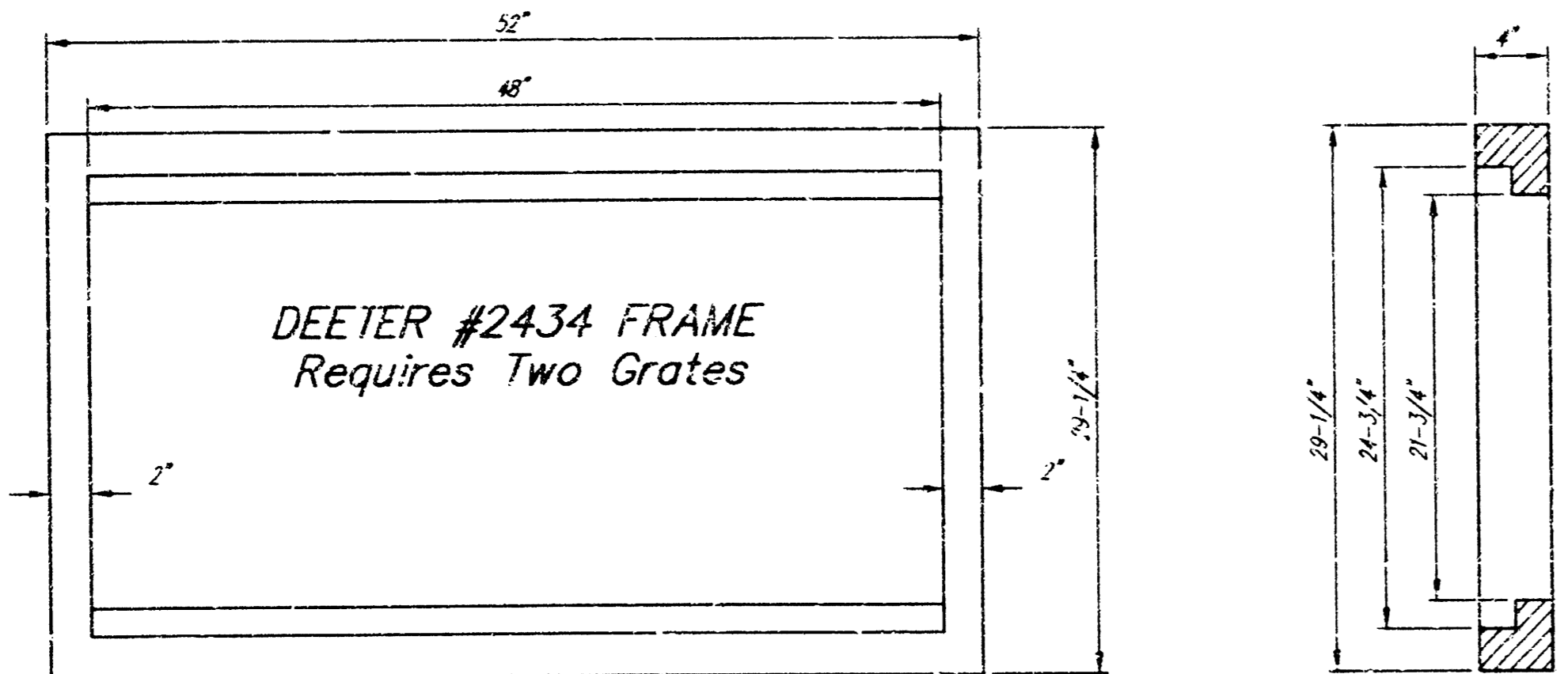
DESIGN	DRAWN	UTILITY	REVIEW	DATE	REVISED
KWL	KWL			June 10, 1999	



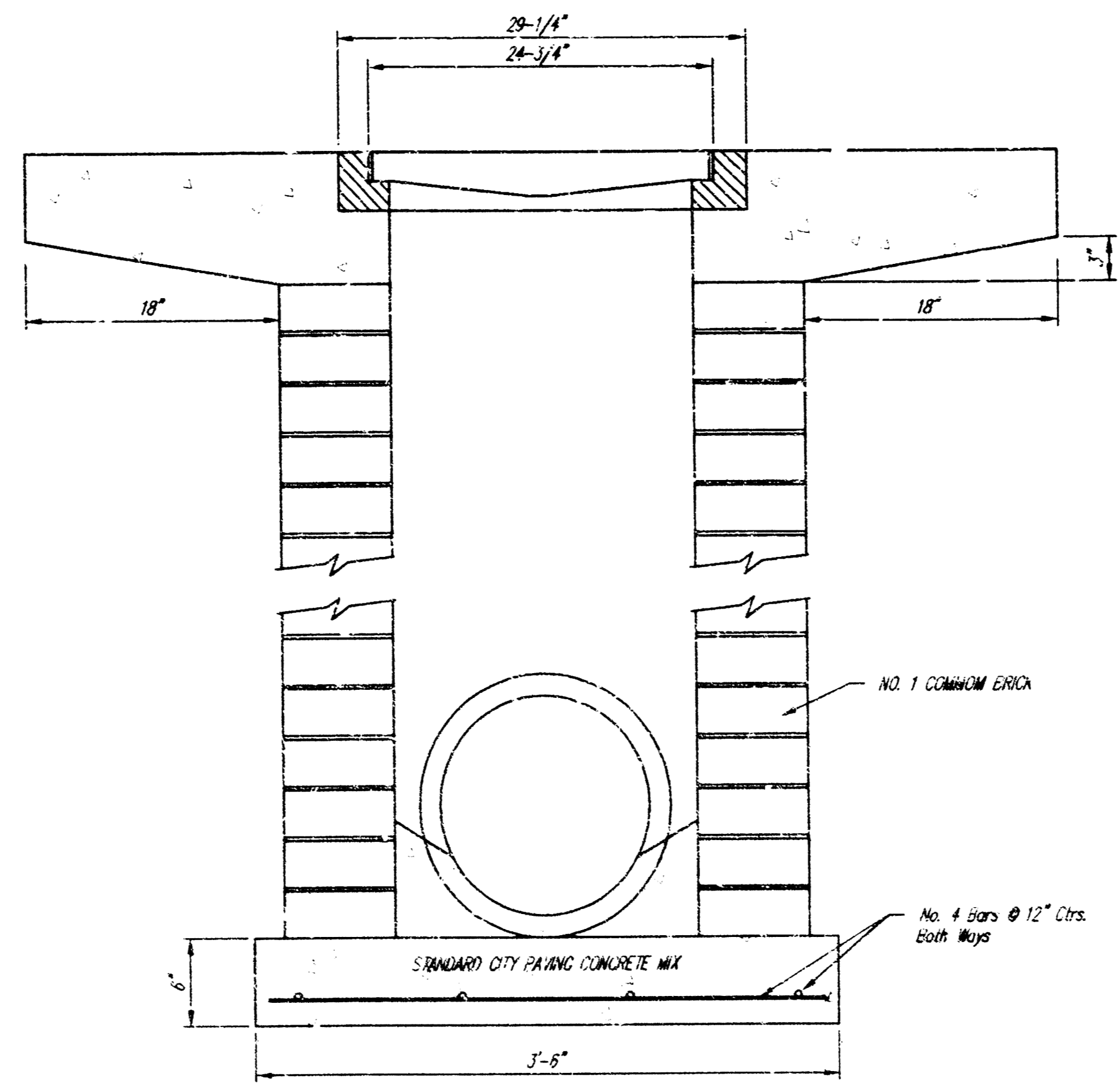
DEETER #2433 GRATE

24" x 24" Frame and Grate Detail

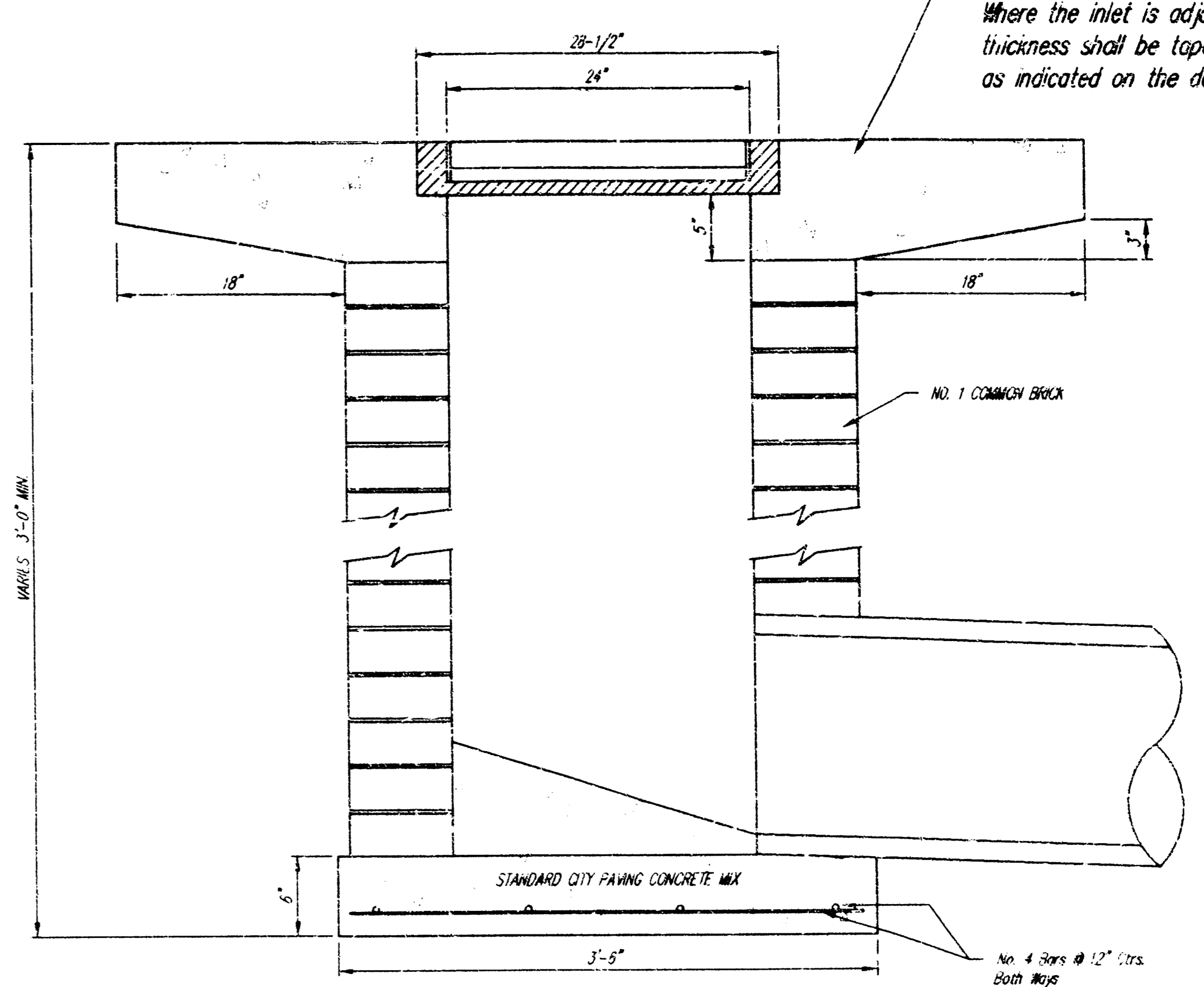
NOTE: Grates shall be imprinted on the top surface with "CITY OF WICHITA" using letters at least 1" in height. Other marking methods may be approved by the engineer.



Double 24" x 24" Frame Detail

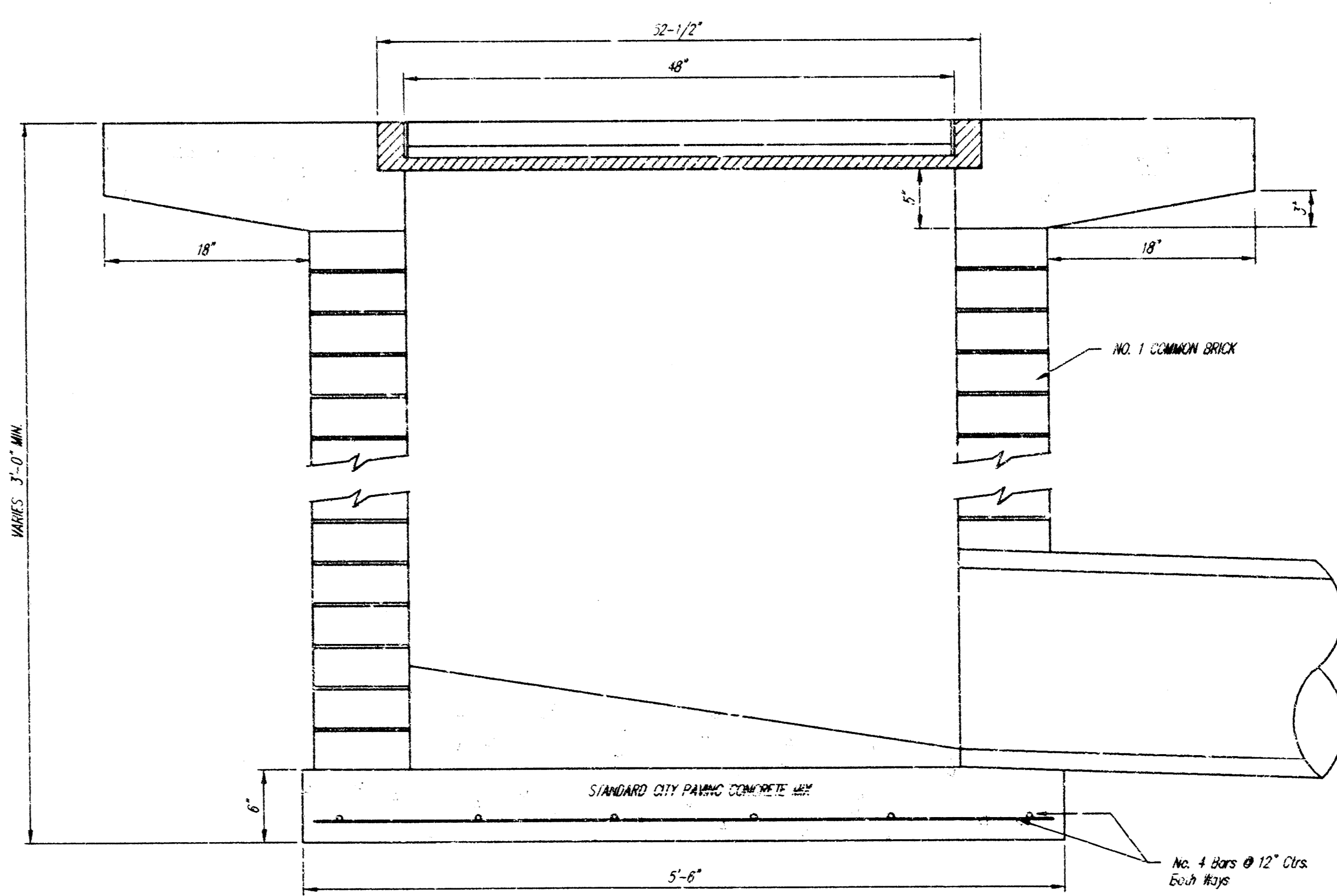


Note: 12" Apron to be used on inlets in this project.



Note: 12" Apron to be used on inlets in this project.

Note: Concrete apron shall be constructed around the inlet when inlet is located in an unpaved area. Where the inlet is adjacent to pavement, the apron thickness shall be tapered to the inlet in 18 inches as indicated on the detail.



<p>THE CITY OF WICHITA</p> <p>CITY ENGINEER'S OFFICE CITY HALL - SEVENTH FLOOR 455 NORTH MAIN STREET WICHITA, KANSAS 67202 (316) 268-4501 (316) 268-4114 FAX</p>	DROP INLET	
	2'x2' / 2'x4'	
	M. E. LINDEBAK P.E. - CITY ENGINEER	
	PROJECT NUMBER 910 PPS	INDEX CODE 607861
DATE MAR 96	SHEET 3 OF	