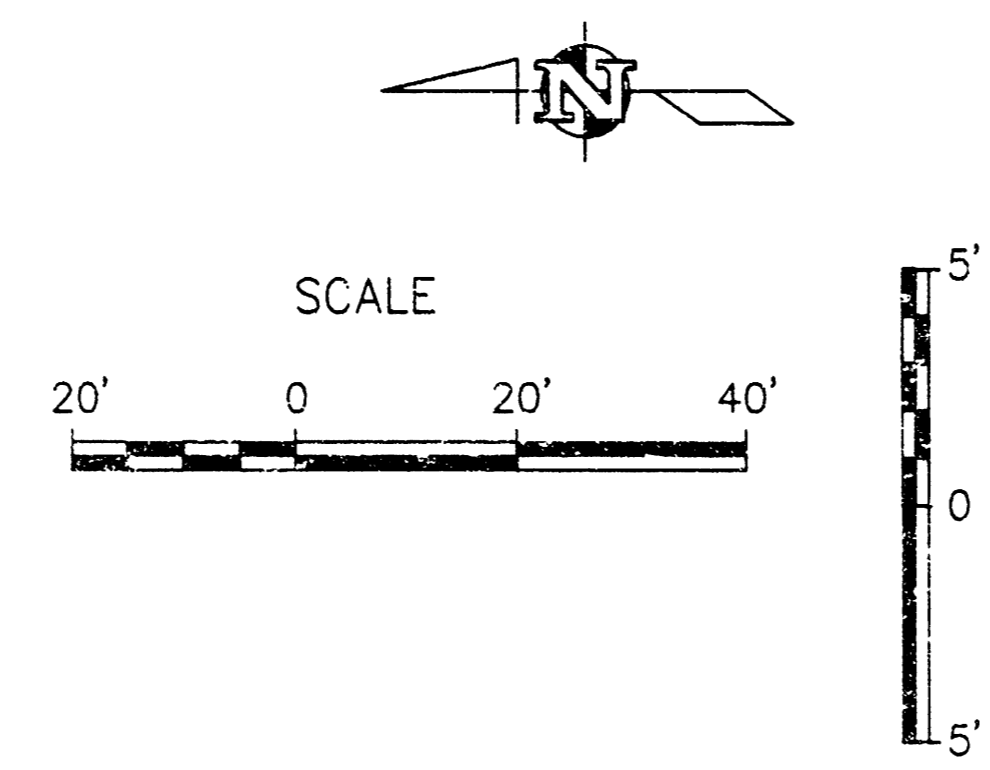
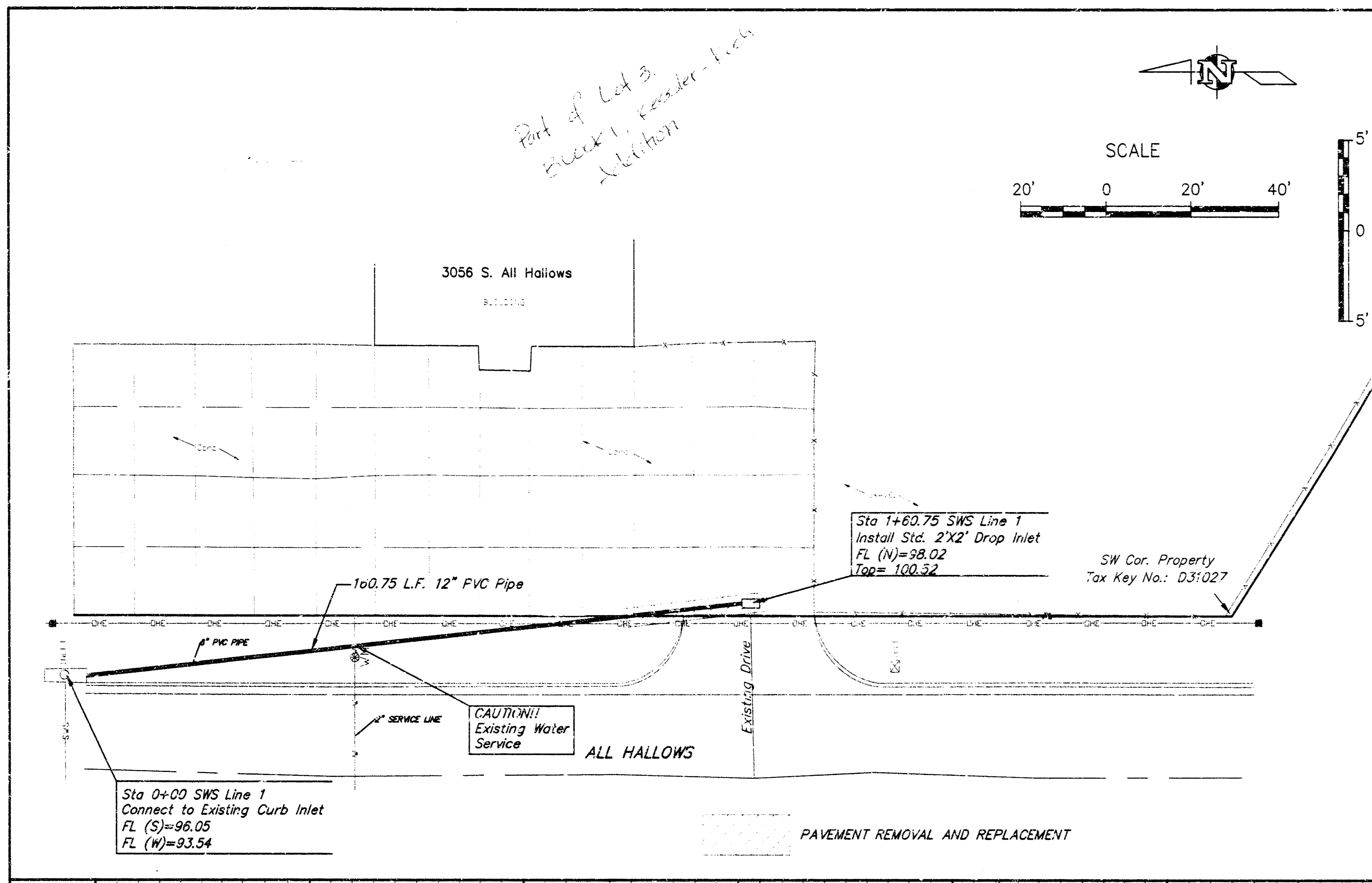


Part of Lot 3
Elevated, Consider 100' Elevation



STORM WATER SEWER IMPROVEMENTS TO SERVE

SS EXPRESS

Project Number
912 PPS (807861)

CITY OF WICHITA, KANSAS

Michael E. Lindebak, P. E., City Engineer

GENERAL NOTES

- Contractor will be required to provide notice to utility companies a minimum of twenty-four (24) hours prior to any excavation, as follows:
Kansas One-Call 687-2470
The Contractor must notify the following in case of an emergency:
Cablevision 262-4270
or 263-2061
K.P.L. Gas Service Company 383-8650
Kansas Gas & Electric Company 383-8600
Arkia Gas Company 942-8350
Southwestern Bell Telephone Company 1-571-2611
City of Wichita Water Department 268-4908
City of Wichita Sewer Department 268-4071
- Exist. utilities and their locations, as shown on the plans, represent the best information obtainable for design. Location information has been obtained from the various utility companies and is either from company record drawings or company-provided field locations. The Contractor will be required to work around existing utilities which do not conflict with proposed construction.
- The Contractor to verify utility locations prior to construction of this project.
- Utility service and installation shall be coordinated with the respective utility owners. Contacts are:
K&E Gas Steve Orth 261-6867
K.G. & E. Miles Capps 261-6434
Wichita Water Paul Bryant 268-4555
Joe Botinely 268-4908
Southwestern Bell Jim Tobin 268-2759
- Traffic affected by the construction of this project shall be handled in accordance with the latest edition of the Manual on Uniform Traffic Control Devices.
- All lawn/turf areas disturbed by construction of proposed improvements shall be restored with the same grass/ sod as existing. Restoration of disturbed areas shall include, but not be limited to, top soil preparation, seeding, mulch and/or reseeded. All seeding/sodding work shall be in accordance with the City of Wichita standard specifications and the City of Wichita administrative regulation No. AR78 which governs cleanup and replacement following construction. All costs for this work shall be subsidiary to the lump sum price bid for "Site Restoration."

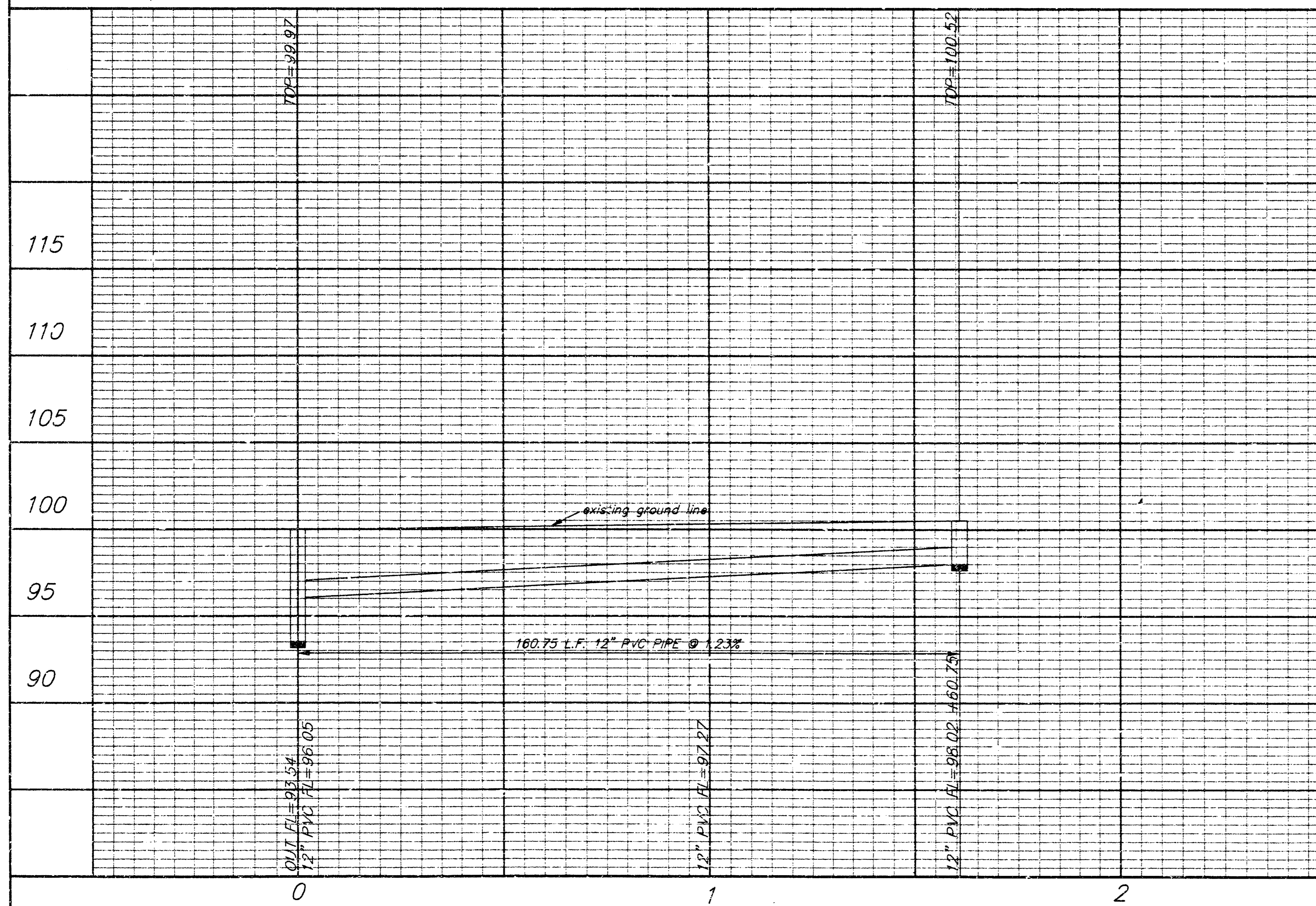
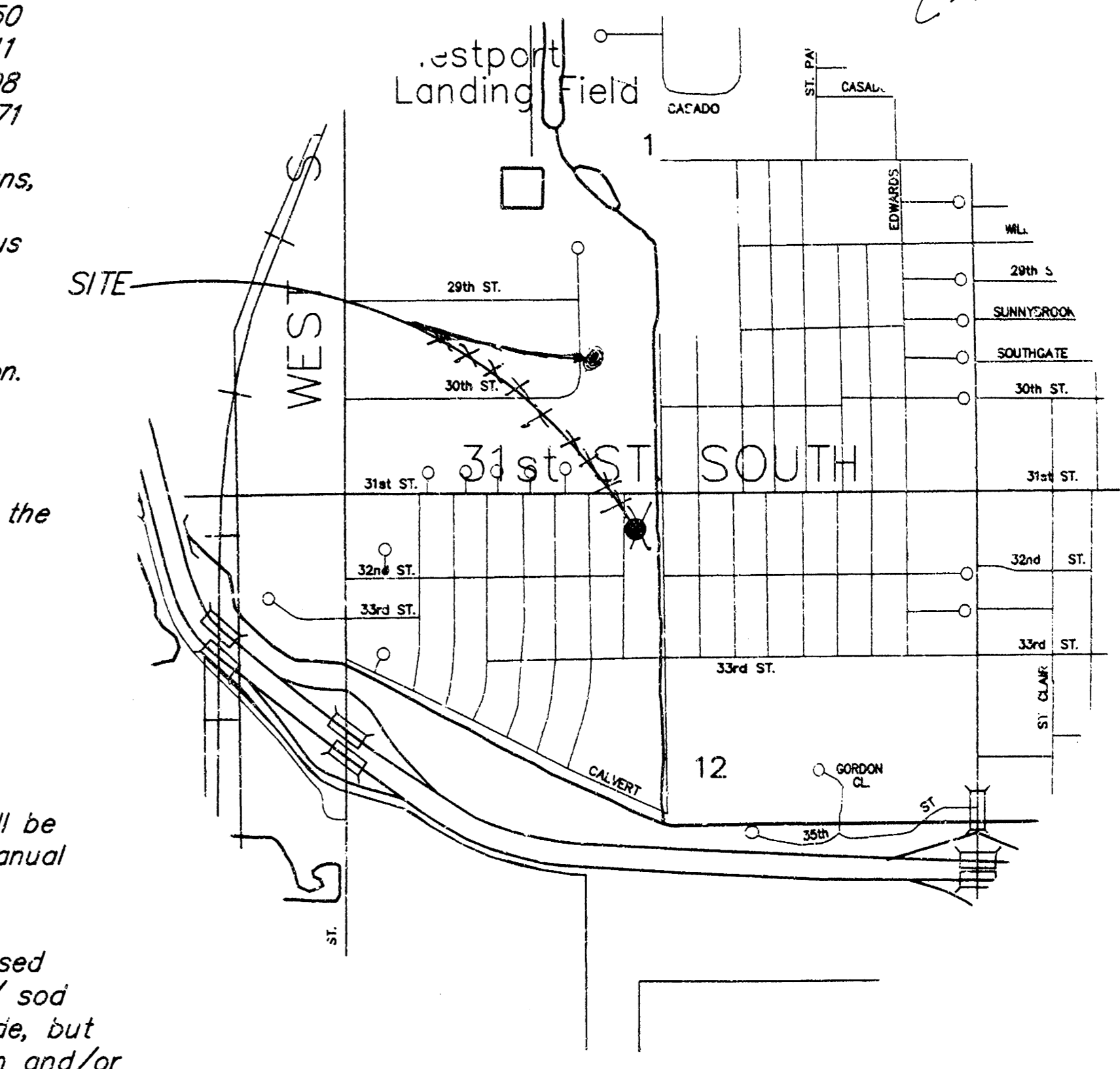
BENCHMARK

Top of inlet East Side All Hallows
Elevation = 100 City Datum

INDEX

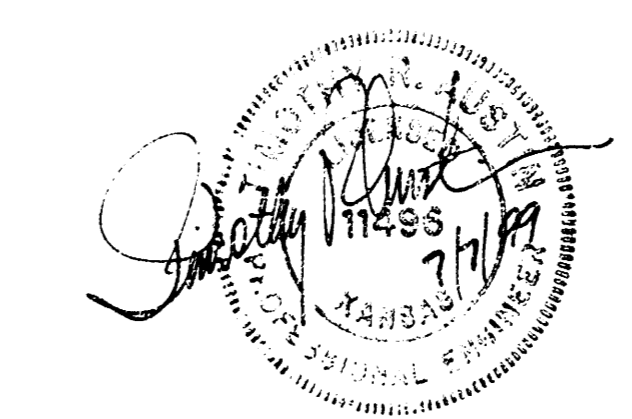
- 1 Cover/Plan and Profile
- 2 Details

BOOKED
6-5-00
MCG
C-123



AS-BUILT

Date: 10/12/99
Signed: [Signature]



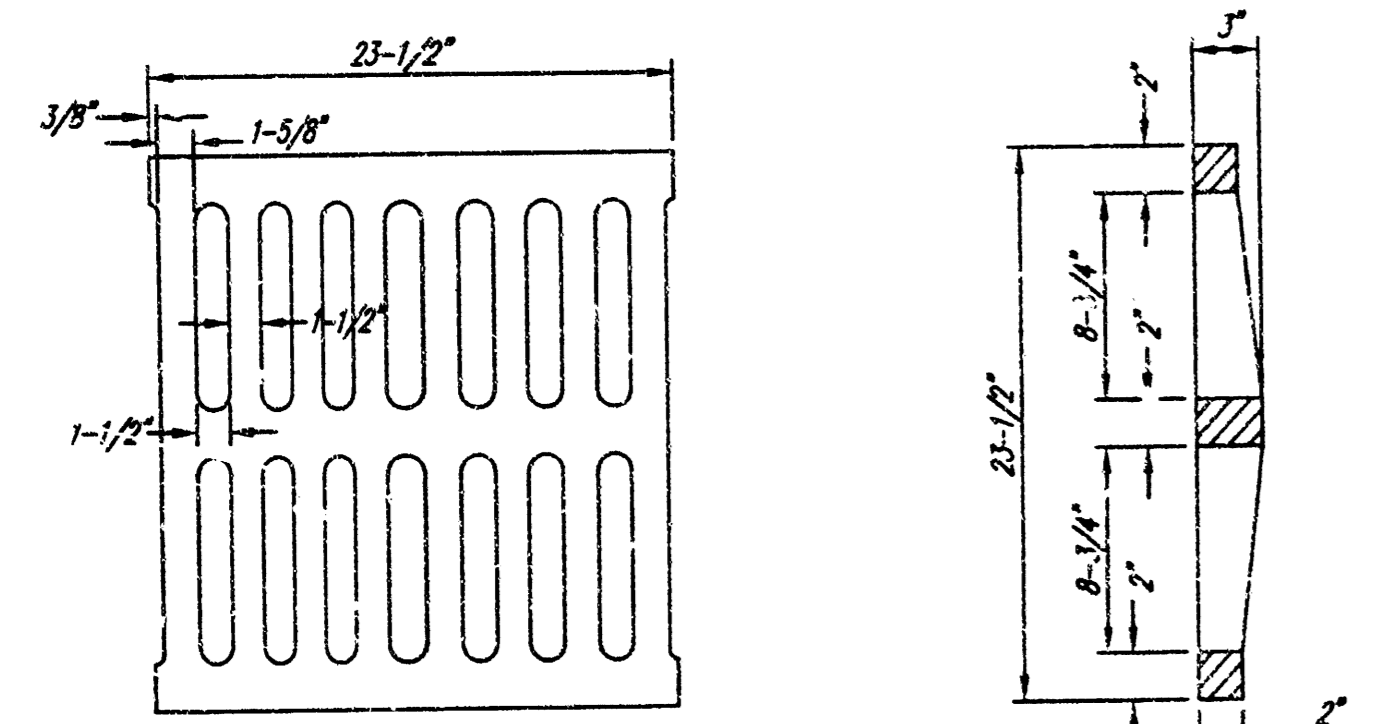
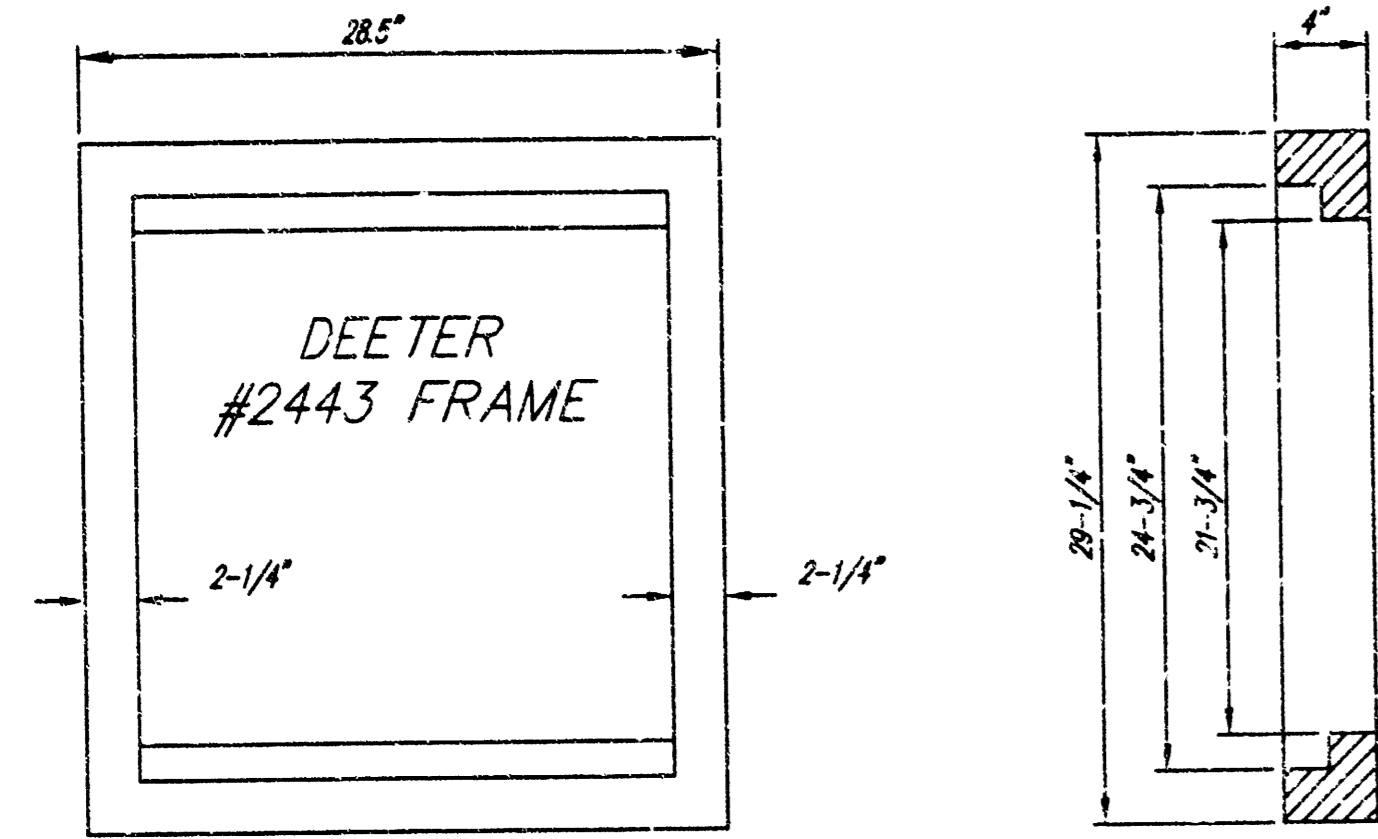
APPROVED AS NOTED BY CITY ENGINEER OF WICHITA

STORM SEWERS URH 7/7/99

Inspection and testing for this project are to be provided by a Licensed Consulting Engineering Firm under contract with the Owner/Developer. Said inspection is to be in accordance with the City of Wichita standard construction engineering practices and certified by a Licensed Professional Engineer. No work shall be performed in dedicated easements or public right-of-way by the Contractor without such inspection nor shall work be commenced without written authorization by the City Engineer. All construction and materials shall comply with the City of Wichita Specifications and Standards (on file and available in the City Engineer's Office).

	PROJECT NUMBER		AM. NO. 99039	SS EXPRESS STORM SEWER WICHITA, KS	SHEET 1 OF 2 REVISED
	DESIGN	DRAWN BY MY	FILE 5WSPP1		

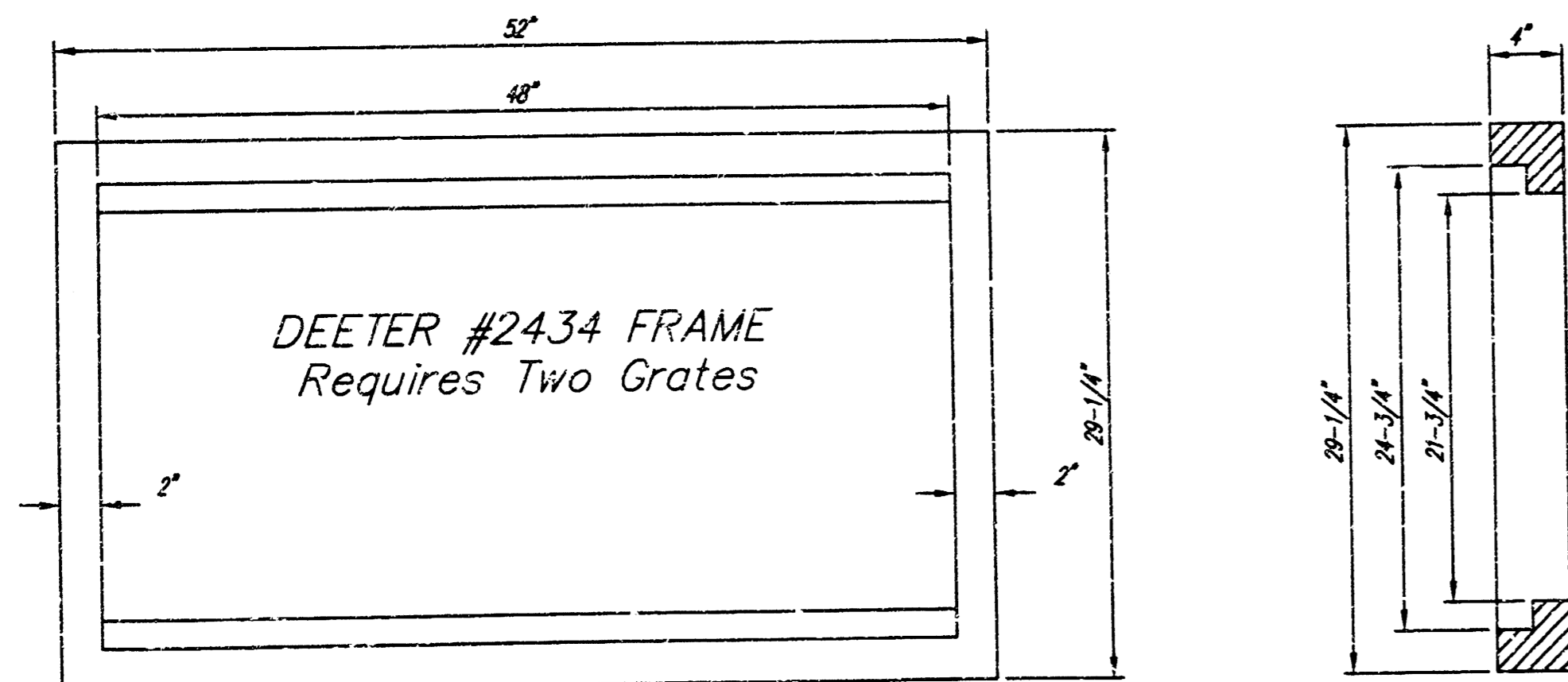
19 3 2 7



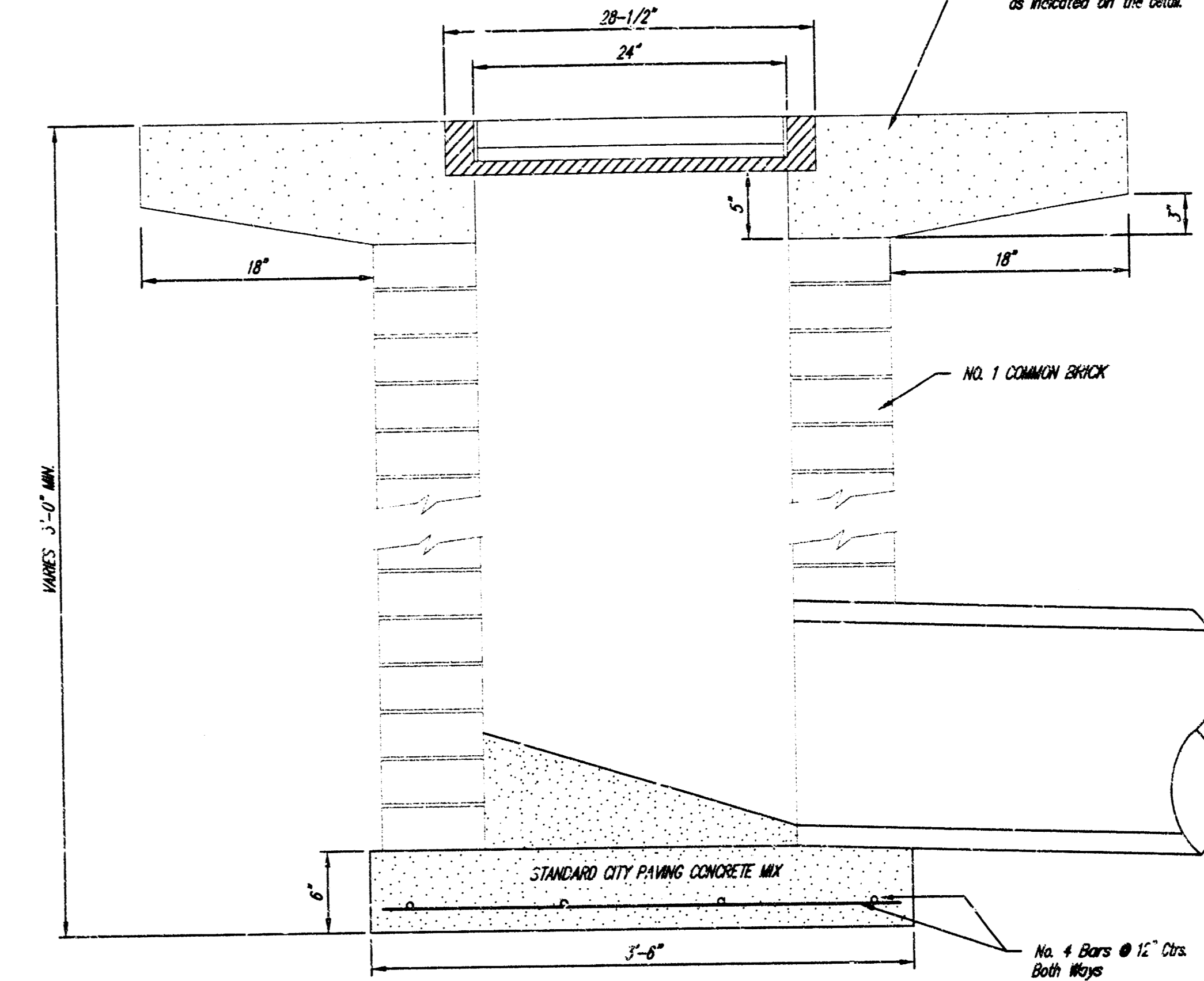
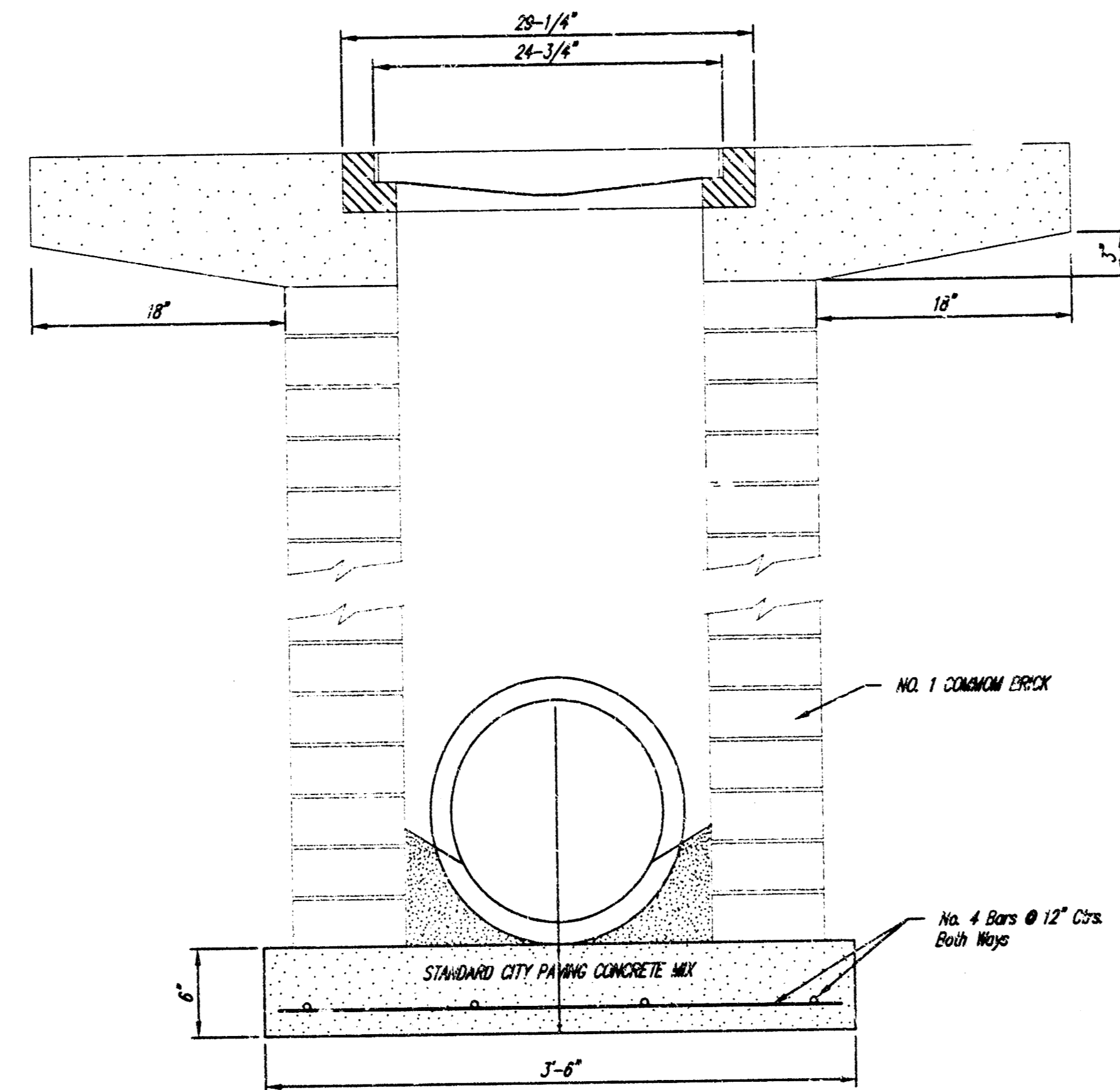
DEETER #2433 GRATE

24" x 24" Frame and Grate Detail

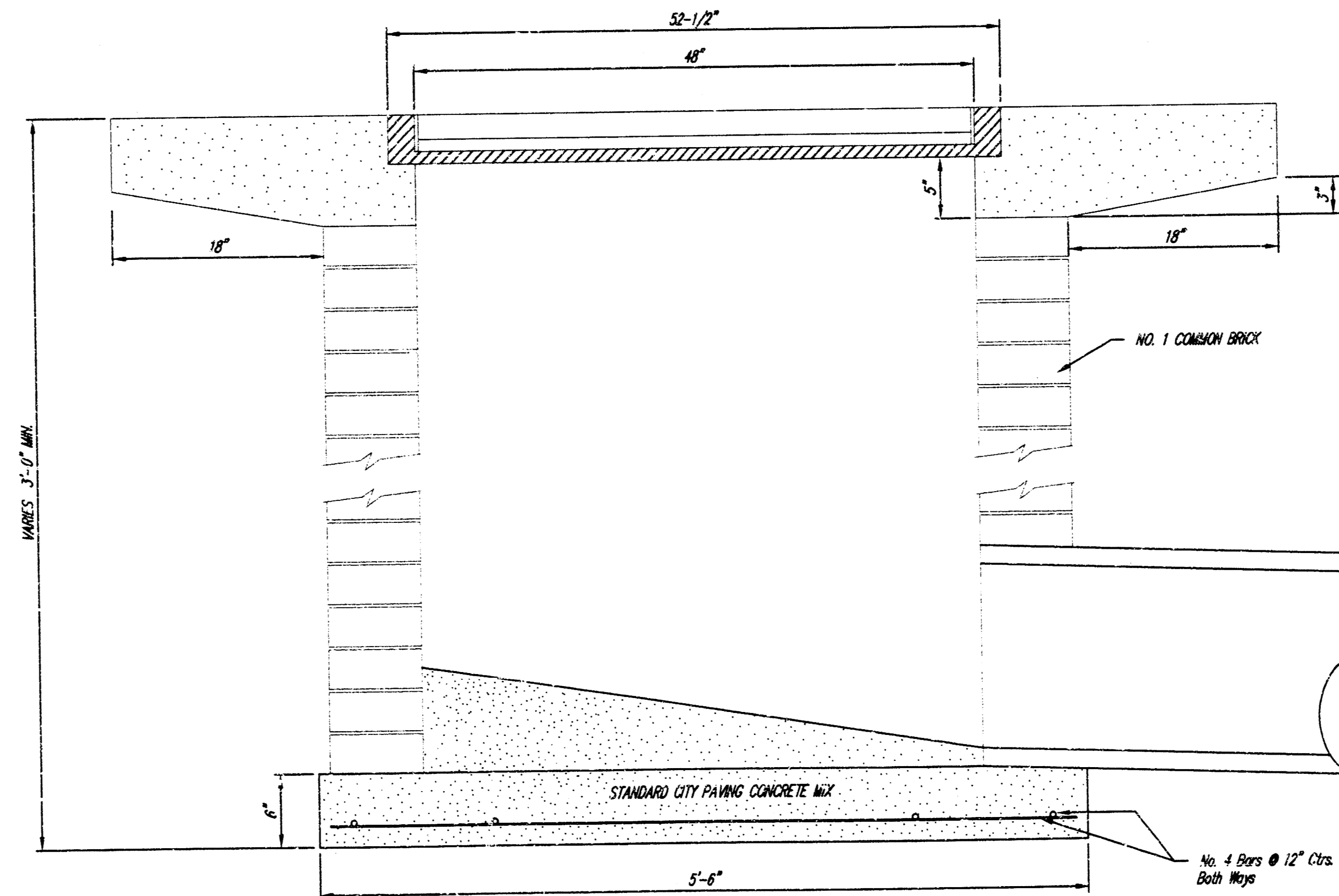
NOTE: Grates shall be imprinted on the top surface with "CITY OF WICHITA" using letters at least 1" in height. Other marking methods may be approved by the engineer.



Double 24" x 24" Frame Detail



Note: Concrete apron shall be constructed around the inlet when inlet is located in an unimproved area. Where the inlet is adjacent to pavement, the pavement thickness shall be tapered to 24 inches at 18 inches as indicated on the detail.



<p>THE CITY OF WICHITA</p> <p>CITY ENGINEER'S OFFICE</p> <p>CITY HALL - SEVENTH FLOOR</p> <p>405 NORTH MAIN STREET</p> <p>WICHITA, KANSAS 67202</p> <p>(316) 244-1400</p> <p>(316) 244-4114 FAX</p>	<p>DROP INLET</p> <p>2' X 2' / 2' X 4'</p>	
	<p>M. E. LINDEBAK P.E. - CITY ENGINEER</p>	
	<p>PROJECT NUMBER</p> <p>XXX PPS XXXXXX</p>	<p>INDEX CODE</p>
	<p>DATE</p> <p>MAR 96</p>	<p>SHEET 2 OF 2</p>