

# STORM WATER SEWER

SERVING PART OF LOT 2 BLOCK 1, CEDAR VIEW ADDITION,  
TO WICHITA, SEDGWICK COUNTY, KANSAS.

SELTZER ELEMENTARY SCHOOL  
U.S.D. # 259

CITY OF WICHITA, KANSAS

M.E. LINDEBAK

CITY ENGINEER

PRIVATE PROJECT NO. 915PPS  
INDEX NO. 607861

June 1990

APPROVED AS NOTED  
BY CITY ENGINEER OF WICHITA

Sanitary Sewers \_\_\_\_\_  
Storm Sewers 1/24 6/24/99  
Driveway Approaches \_\_\_\_\_  
Water Mains \_\_\_\_\_  
Paving \_\_\_\_\_

NOTE TO CONTRACTOR

INSPECTION AND TESTING FOR THIS PROJECT IS TO BE PROVIDED BY A LICENSED CONSULTING ENGINEERING FIRM UNDER CONTRACT WITH THE OWNER/DEVELOPER. SAID INSPECTION IS TO BE IN ACCORDANCE WITH THE CITY OF WICHITA STANDARD CONSTRUCTION ENGINEERING PRACTICES AND CERTIFIED BY A LICENSED PROFESSIONAL ENGINEER. NO WORK SHALL BE PERFORMED IN DEDICATED EASEMENTS OR THE PUBLIC RIGHT-OF-WAY BY THE CONTRACTOR WITHOUT SUCH INSPECTION NOR SHALL ANY WORK BE COMMENCED IN DEDICATED EASEMENTS OR PUBLIC RIGHT-OF-WAY WITHOUT WRITTEN AUTHORIZATION BY THE CITY ENGINEER.

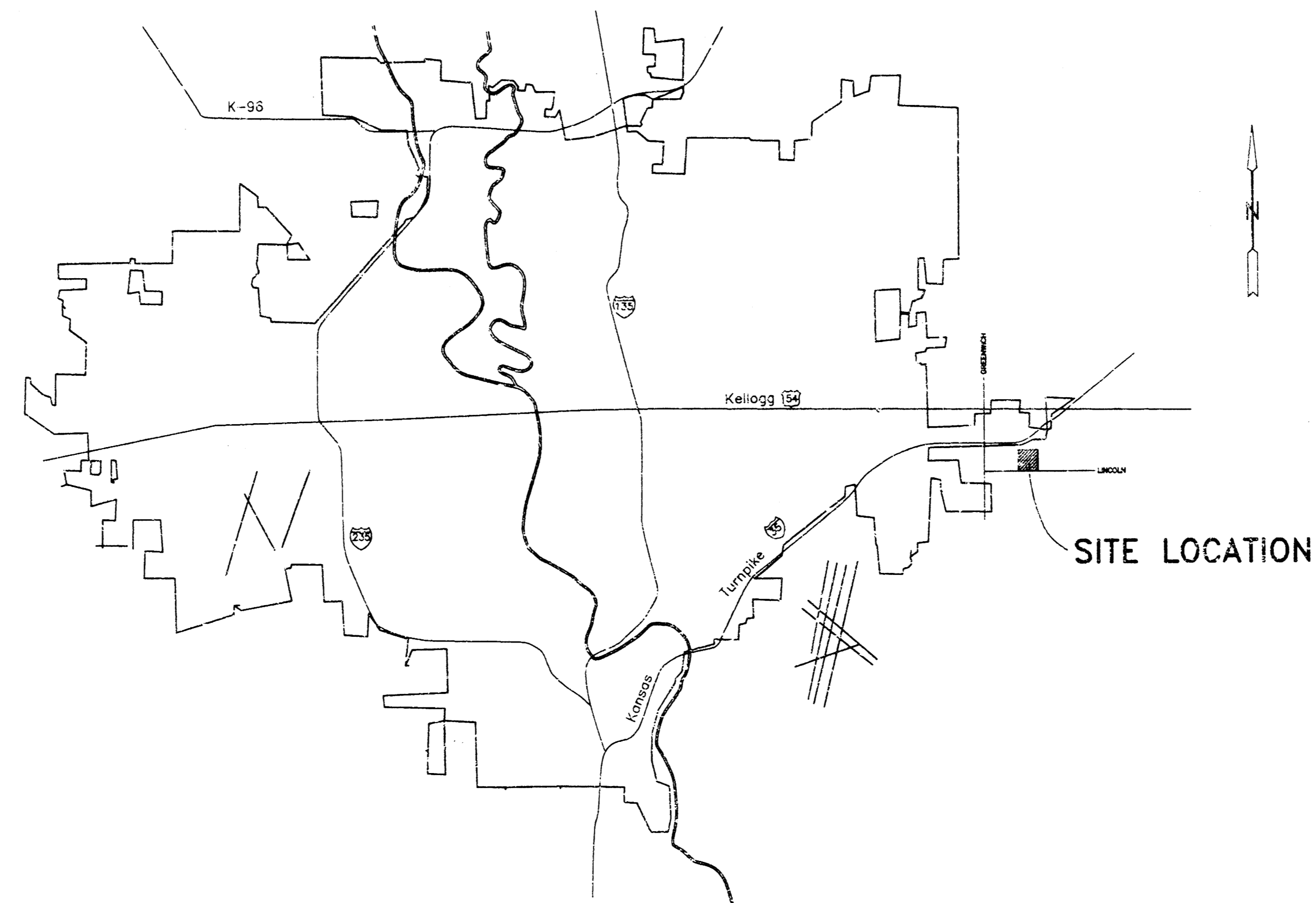
INDEX

1. Title Sheet
2. Standard Inlet Details
3. Key Map
4. Plan & Profile - Line 1
5. Final Plat - Cedar View Addition

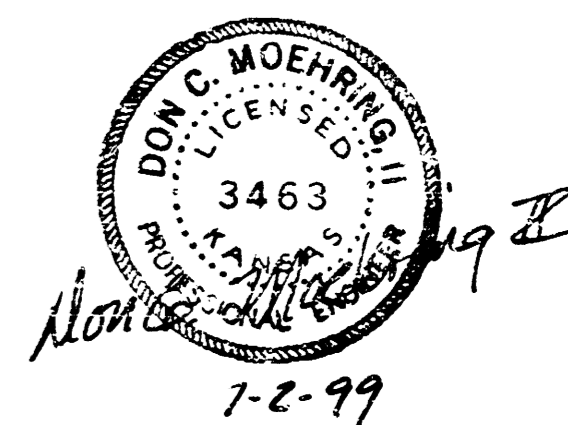
NOTES

1. THE CONTRACTOR WILL BE REQUIRED TO PROVIDE ADVANCE NOTICE OF TWENTY-FOUR (24) HOURS TO UTILITY COMPANIES PRIOR TO STARTING ANY EXCAVATION AS FOLLOWS:  
KANSAS ONE-CALL 697-2470  
THE CONTRACTOR MUST NOTIFY THE FOLLOWING IN CASE OF EMERGENCY:  

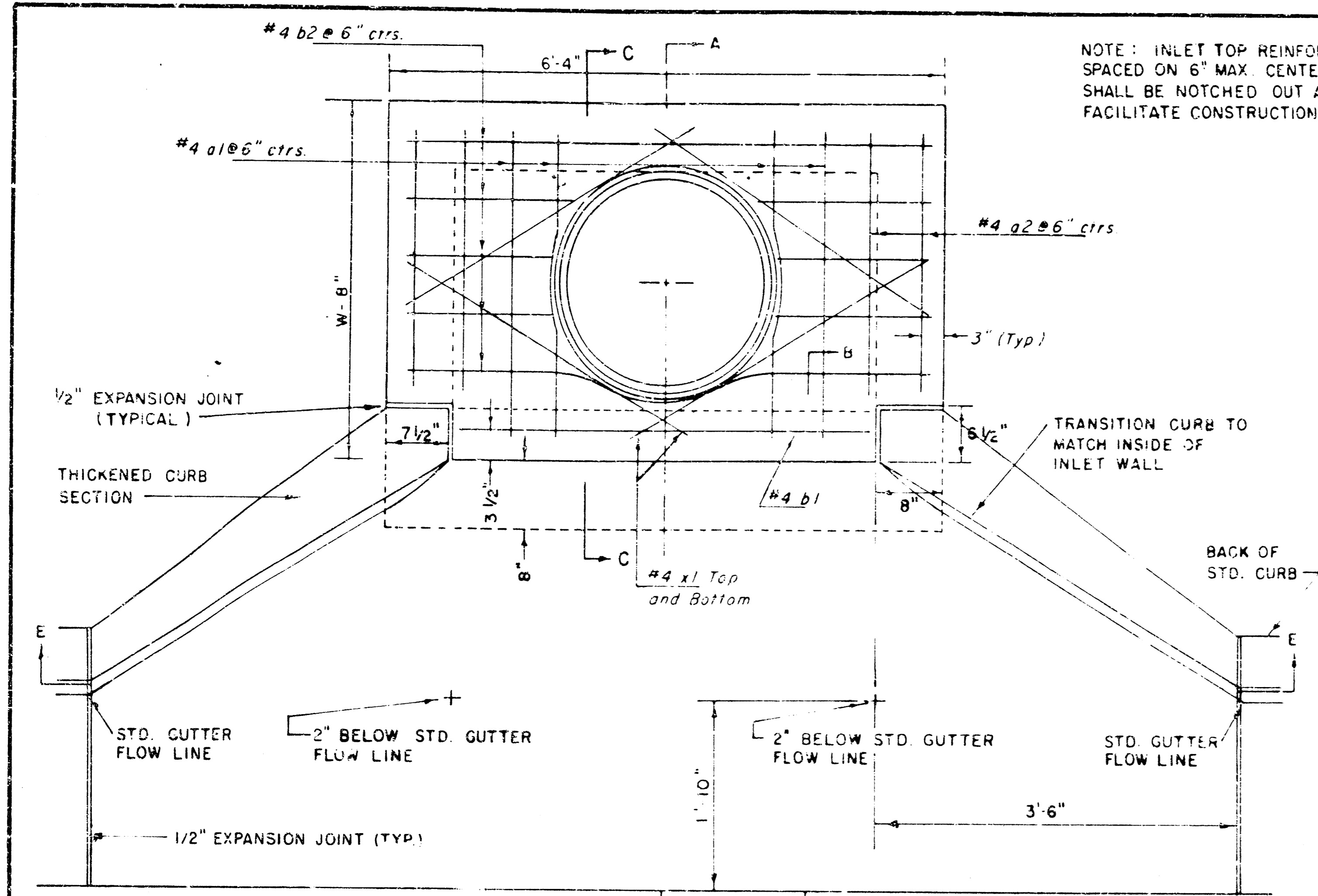
CABLEVISION	262-4270 OR 263-2061
KPL GAS SERVICE COMPANY	263-7511
KANSAS GAS & ELECTRIC	264-1141
PEOPLES NATURAL GAS	942-8350 OR 263-8151
SOUTHWESTERN BELL TELEPHONE	1-571-2611
CITY OF WICHITA WATER DEPT	268-4908
CITY OF WICHITA SEWER MAINTENANCE	268-4071
2. THE CONTRACTOR SHALL BE RESPONSIBLE FOR PRESERVING PROPERTY IRONS. THE CONTRACTOR WILL BE REQUIRED TO RE-ESTABLISH AND PROPERTY IRONS WHICH ARE DAMAGED OR DESTROYED BY HIS CONSTRUCTION OPERATIONS. SUCH IRONS SHALL BE RE-ESTABLISHED BY A LICENSED LAND SURVEYOR IN ACCORDANCE WITH STATE LAWS.
3. INTERURBAN TRAFFIC GENERATED OUTSIDE THE PROJECT AREA IS NOT TO BE CARRIED THROUGH CONSTRUCTION.
4. EXISTING UTILITIES AND THEIR LOCATION, AS SHOWN ON THE PLANS, REPRESENT THE BEST INFORMATION OBTAINABLE FOR DESIGN. LOCATION INFORMATION HAS BEEN OBTAINED FROM THE VARIOUS UTILITY COMPANIES AND IS EITHER FROM COMPANY RECORD DRAWINGS OR COMPANY PROVIDED FIELD LOCATIONS. THE CONTRACTOR WILL BE REQUIRED TO WORK AROUND EXISTING UTILITIES WITHIN THE RIGHT-OF-WAY WHICH DO NOT CONFLICT WITH PROPOSED CONSTRUCTION.
5. RUGGLE FROM THE REMOVAL OF MISCELLANEOUS STRUCTURES AND EXCESS EXCAVATION WHICH IS TO BE WASTED SHALL BE DISPOSED OF ON SITES TO BE PROVIDED BY THE CONTRACTOR. THESE SITES SHALL BE APPROVED BY THE ENGINEER AS TO SUITABILITY, APPEARANCE AND SITE LOCATION. LOCATIONS THAT, IN THE OPINION OF THE ENGINEER, WILL LEAVE AN UNSIGHTLY APPEARANCE WILL NOT BE APPROVED. ALL DISPOSAL SITES MUST BE APPROVED BY THE KANSAS DEPARTMENT OF HEALTH AND ENVIRONMENT. MATERIAL EITHER STOCKPILED OR IN A FLOOD PLAIN WOULD REQUIRE A KANSAS STATE BOARD OF AGRICULTURE PERMIT. ANY MATERIAL DUMPED IN WATERS OF THE UNITED STATES OR WETLANDS IS SUBJECT TO U.S. CORPS. OF ENGINEER PERMITTING REGULATIONS. ANY MATERIAL BURIED OR STOCKPILED BEYOND APPROVED CONSTRUCTION LIMITS WOULD REQUIRE ADDITIONAL ARCHAEOLOGICAL INVESTIGATIONS UNLESS BURIED IN A PREVIOUSLY APPROVED BORROW LOCATION.
6. THE CONTRACTOR SHALL NOTIFY PIPELINE COMPANIES AT LEAST 24 HOURS IN ADVANCE OF ANY WORK BEING PERFORMED ACROSS AND/OR ADJACENT TO PIPELINES.
7. ALL DISTURBED AREAS TO BE RESEEDING USING TEMPORARY RYE GRASS AT A RATE OF 4 LBS. PER 1000 SQ. FT. WITHIN 14 DAYS UPON PROJECT COMPLETION. CONTRACTOR SHALL PREPARE GROUND AS PER CITY SPECIFICATIONS. THE AREA IN STREET RIGHT-OF-WAY SHALL BE RESTORED WITH SAME TYPE GRASS PER ARTS.



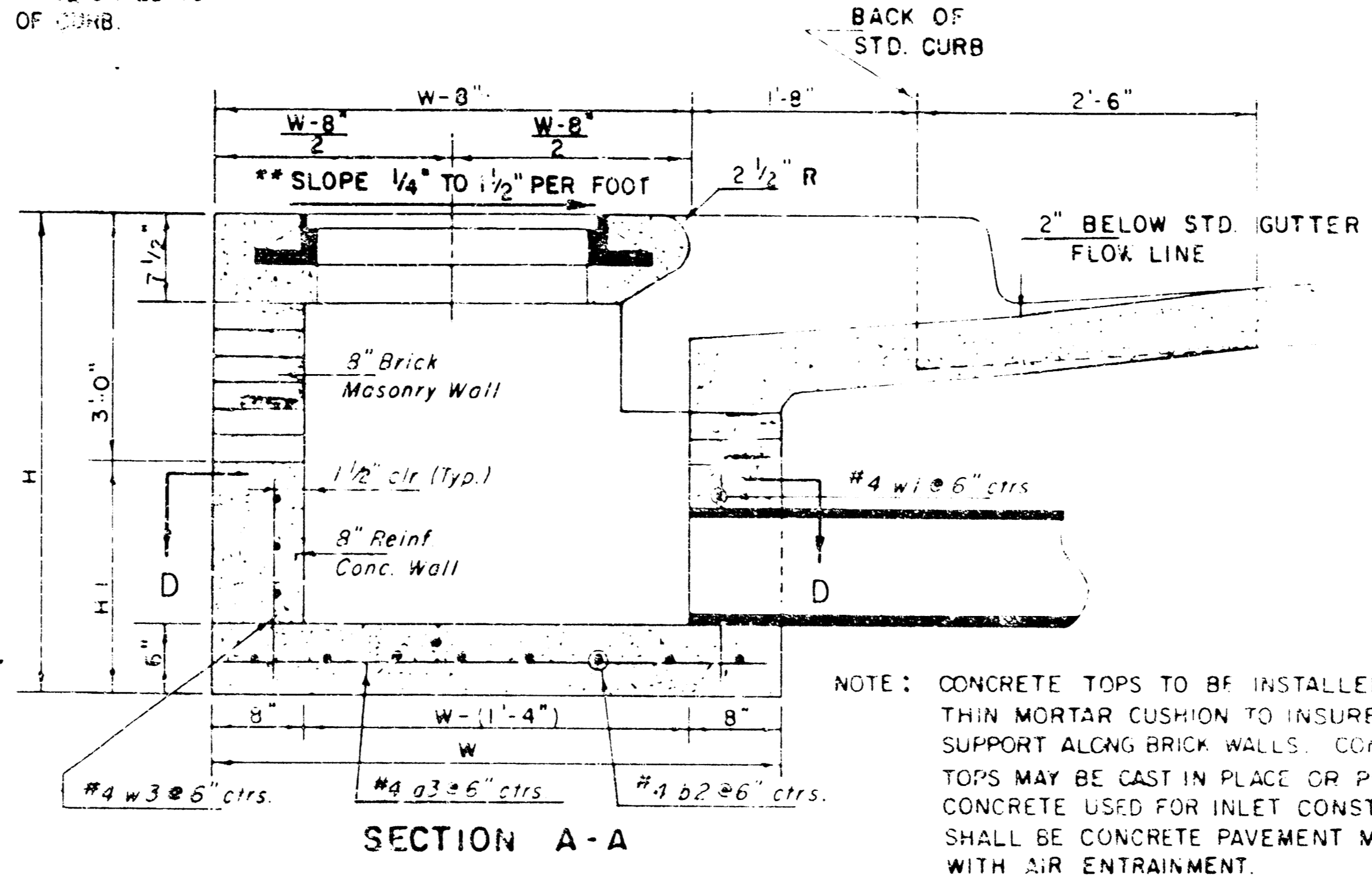
Booked  
E-4  
8/20/03  
RDL



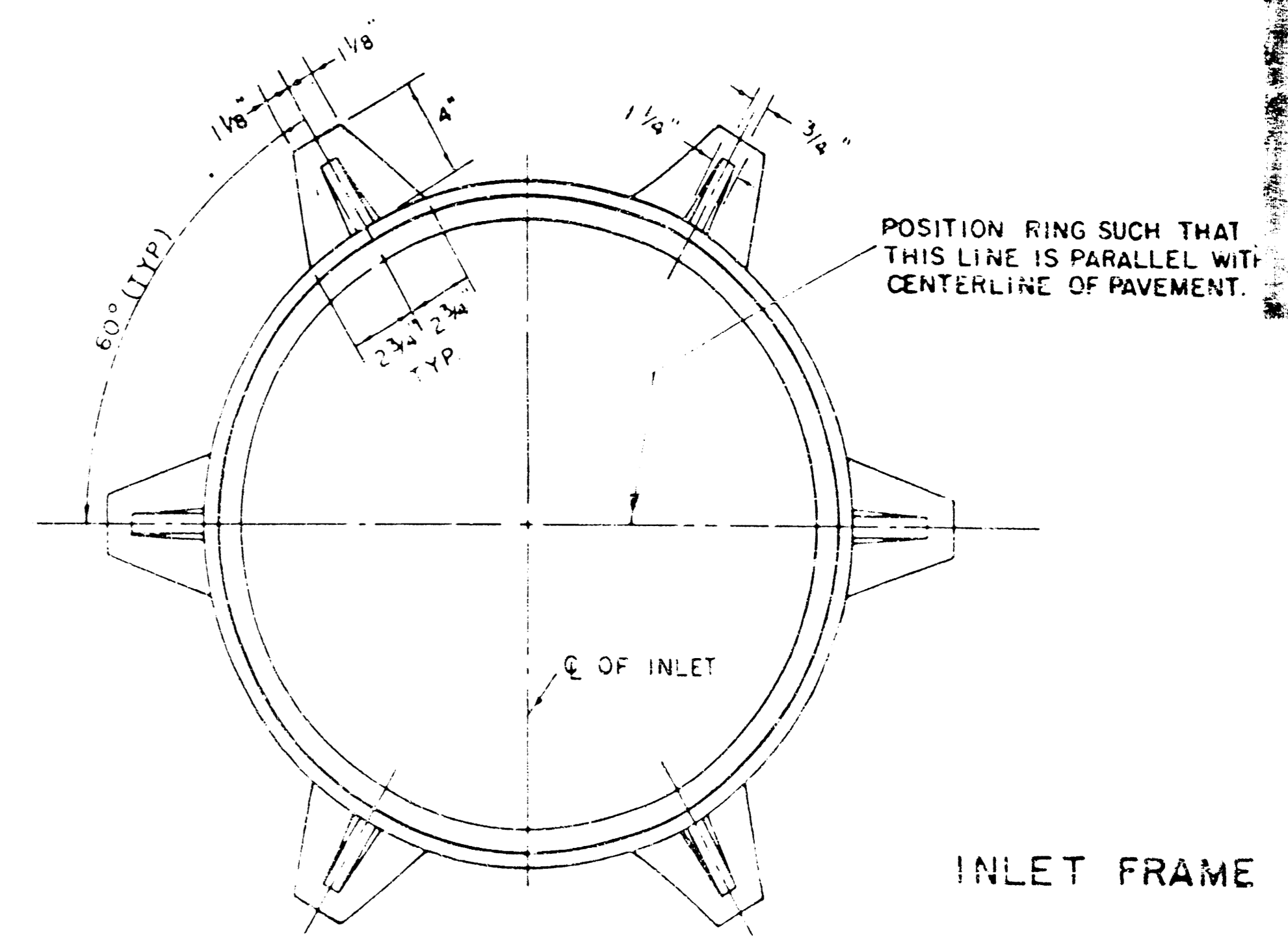
MOEHRING & ASSOCIATES  
CONSULTING ENGINEERS  
WICHITA



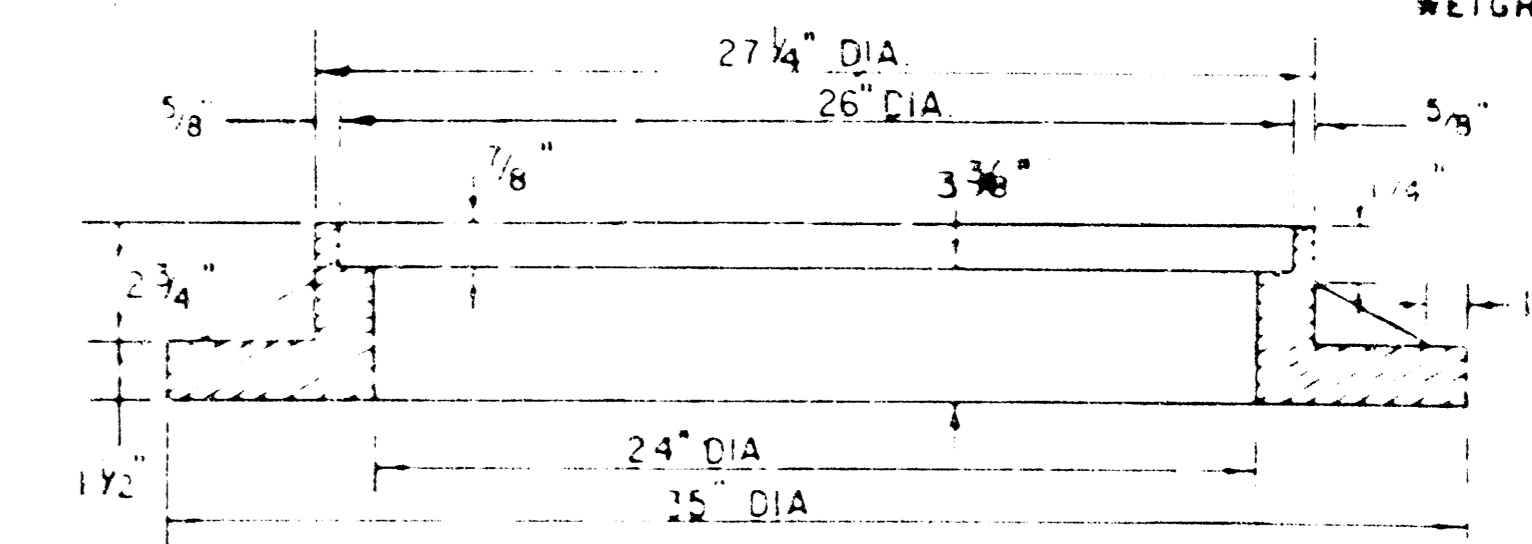
NOTE: INLET TOP REINFORCING SHALL BE SPACED ON 6" MAX. CENTERS. INLET LIDS SHALL BE NOTCHED OUT AS INDICATED TO FACILITATE CONSTRUCTION OF CURB.



NOTE: CONCRETE TOPS TO BE INSTALLED ON THIN MORTAR CUSHION TO INSURE FULL SUPPORT ALONG BRICK WALLS. CONCRETE TOPS MAY BE CAST IN PLACE OR PRECAST. CONCRETE USED FOR INLET CONSTRUCTION SHALL BE CONCRETE PAVEMENT MIX WITH AIR ENTRAINMENT.



WEIGHT = 180 LBS



SEE CITY OF WICHITA STANDARD MANHOLE FRAME AND COVER DETAIL SHEET FOR COVER DETAILS TO BE USED WITH INLET FRAME.

NOTE: EXPANSION JOINT ONLY IN CURB AREA WITH CONC. PAVEMENT.

PLAN

BENDING DIAGRAM

PRECAST SLAB AND FLOOR REINFORCING											
Mark	Size	W=4'-4"		W=5'-4"		W=6'-4"		W=7'-4"		W=8'-4"	
		No.	Length	No.	Length	No.	Length	No.	Length	No.	Length
a1	#4	6	6'-7"	5	9'-7"	6	10'-7"	6	12'-7"	6	14'-7"
a2	#4	4	6'-0"	4	8'-0"	4	10'-0"	4	12'-0"	4	14'-0"
a3	#4	13	4'-1"	13	5'-1"	13	6'-1"	13	7'-1"	13	8'-1"
b1	#4	1	4'-9"	1	4'-9"	1	4'-9"	1	4'-9"	1	4'-9"
b2	#4	23	6'-1"	23	6'-1"	35	6'-1"	41	6'-1"	47	6'-1"
x1	#4	8	3'-10"	8	4'-2"	8	4'-6"	8	4'-10"	8	5'-2"

WALL REINFORCING											
Mark	Size	W=4'-4"		W=5'-4"		W=6'-4"		W=7'-4"		W=8'-4"	
		No.	Length	No.	Length	No.	Length	No.	Length	No.	Length
w1	#4	1	6'-1"	1	6'-1"	1	6'-1"	1	6'-1"	1	6'-1"
w2	#4	1	4'-1"	1	5'-1"	1	6'-1"	1	7'-1"	1	8'-1"
w3	#4	32	2	36	2	40	2	44	2	48	2

\* Field bend or cut Reinforcing as required for clearance.  
 ① 4(HI-12"), (HI-12") Round down to nearest 0.5"  
 ② HI-3"

STANDARD CURB INLET PRECAST TOPS			
W	PRE-CAST TOP SIZE	PIPE SIZE	CU YD CONC.
4'-4"	38" x 34" x 7 1/2"	21" B SMALLER	0.38 ±
5'-4"	48" x 64" x 7 1/2"	24" B 30"	0.51 ±
6'-4"	58" x 64" x 7 1/2"	36" B 42"	0.64 ±
7'-4"	68" x 64" x 7 1/2"	48" B 54"	0.77 ±
8'-4"	78" x 64" x 7 1/2"	60" B 66"	0.90 ±

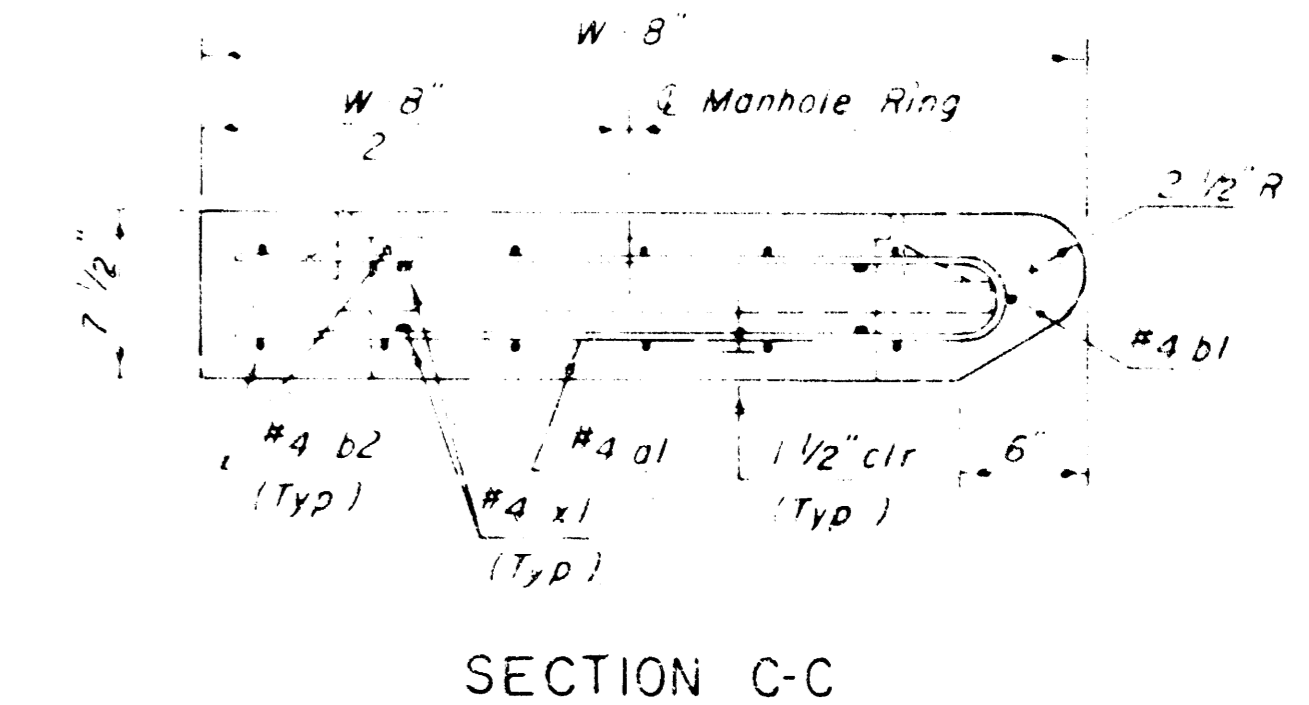
\*\* NOTE: Slope of Inlet Tops to match Sidewalk or Parking Slopes within Limits indicated.

NOTE: CONTRACTOR SHALL HAVE THE OPTION OF CONSTRUCTING 8" BRICK MASONRY WALLS BETWEEN THE CONCRETE INLET BASE AND TOP ON THIS INLET WHEN W = 6'-4" AND H = 7'-0" OR LESS.

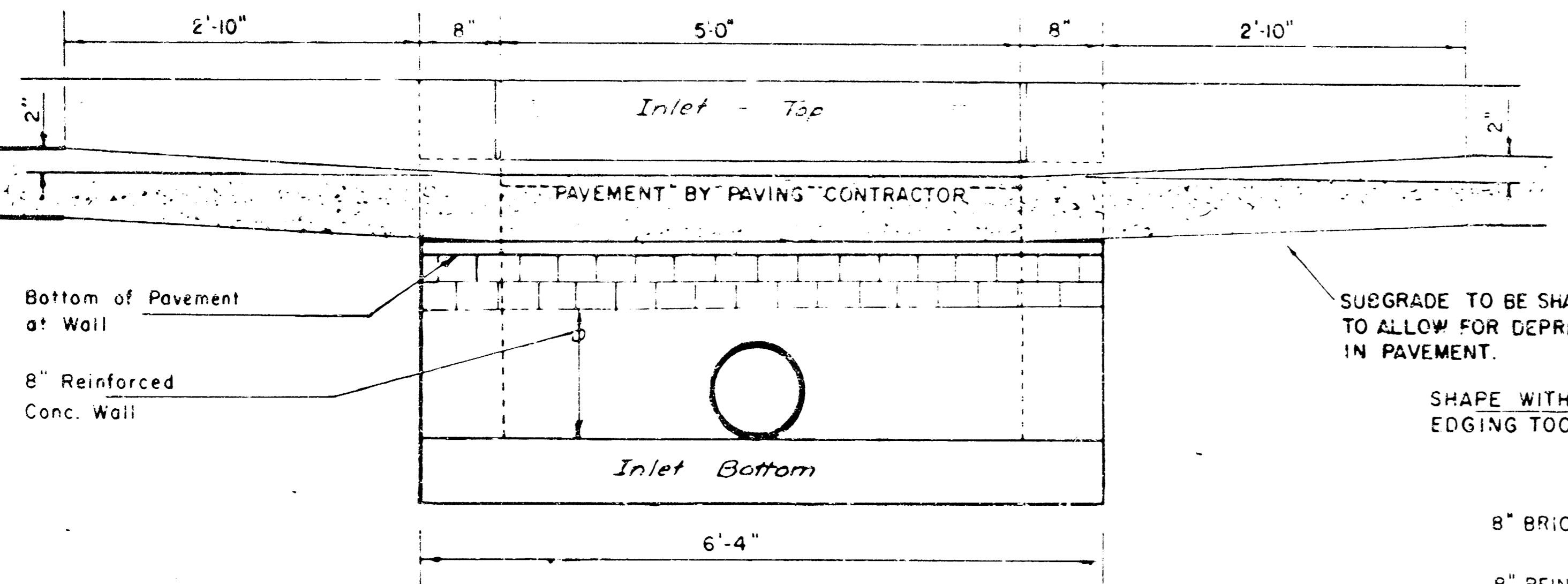
ADDITIONAL CURB AND GUTTER CONSTRUCTION NECESSARY TO CONNECT SET-BACK INLET TO PAVEMENT WILL BE PAID FOR AT THE UNIT PRICE BID FOR EACH INLET HOOKUP.

INLET INVERT SHALL BE SHAPED WITH 6 SACK SAND MIX CONCRETE TO CREATE FLOW CHANNELS AND TO INCREASE HYDRAULIC EFFICIENCY SUCH THAT THE INLET WILL BE SELF-CLEANING BETWEEN ALL INLET AND/OR OUTLET PIPES.

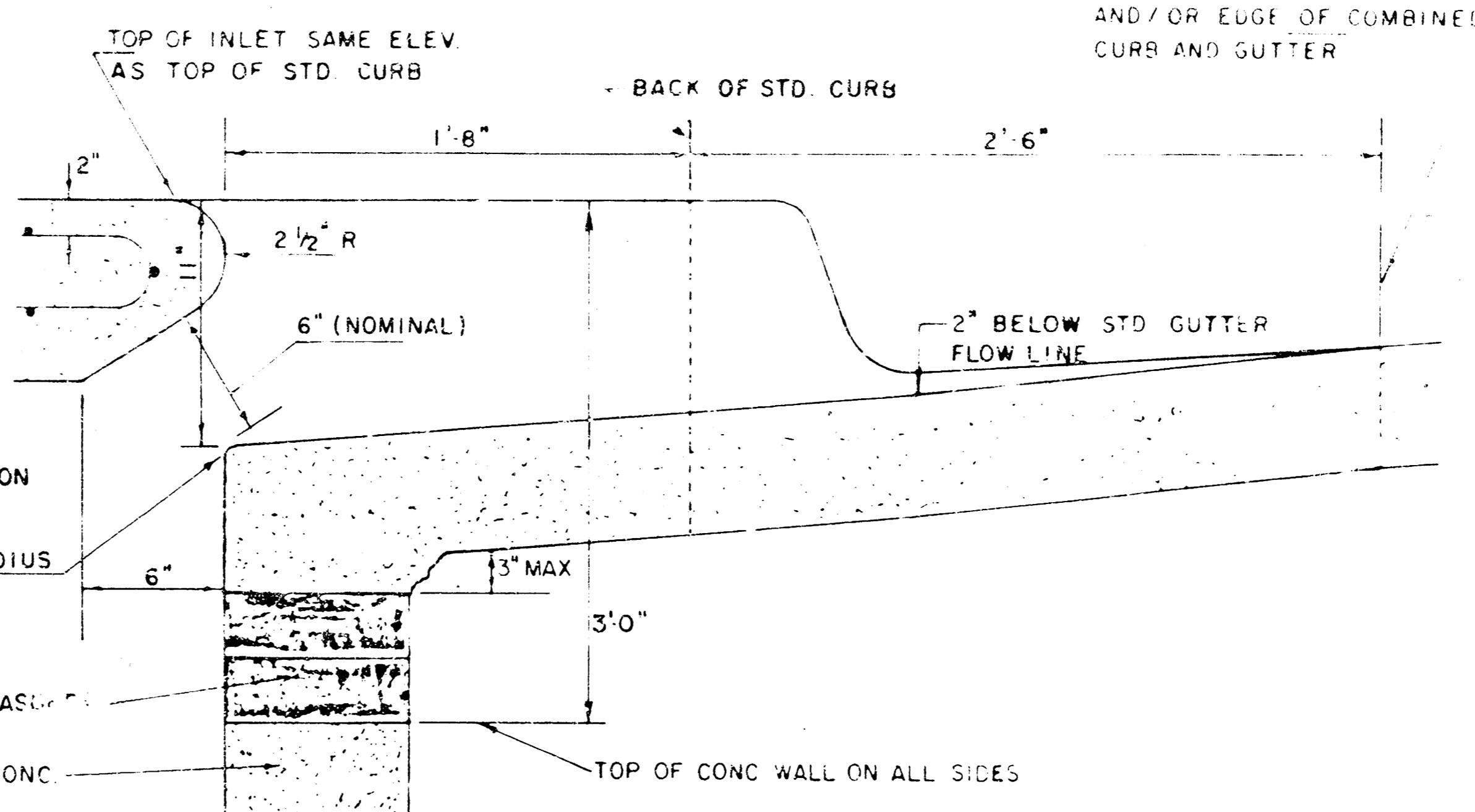
THE ENDS OF ALL PIPES INSTALLED IN INLETS SHALL BE CUT OFF FLUSH WITH THE INSIDE FACE OF THE INLET WALL.



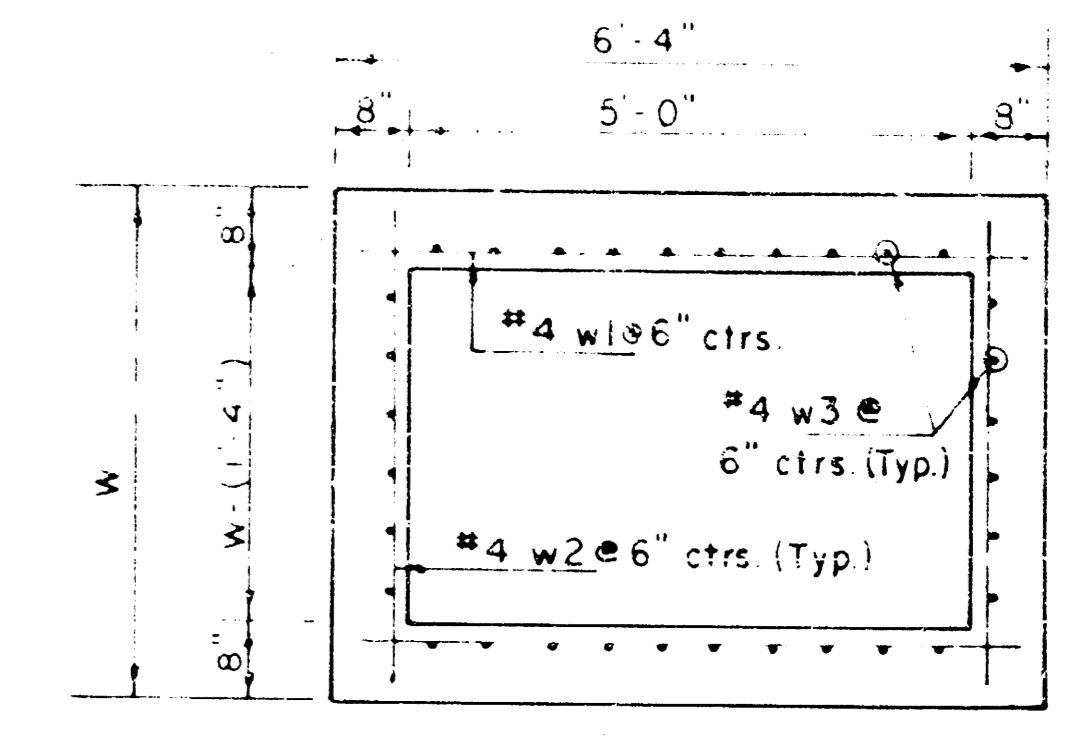
SECTION C-C



SECTION E-E



SECTION B-B



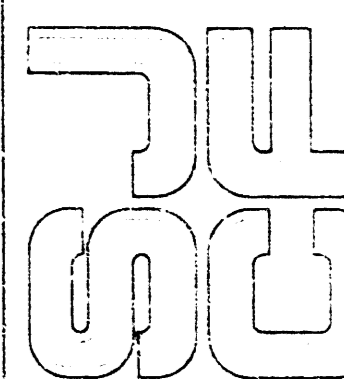
SECTION D-D

REVISED 11-30-1988  
 REVISED 12-21-1984  
 Revised 2-16-1989

DETAIL STANDARD TYPE IA CURB INLET  
 CITY OF WICHITA, KANSAS  
 INLET OPENING = 6" x 5' 0"

JUNE 1984

Sheet 2 of 5



STANDARD STALLS AND D2.08 FOR HANDICAP STALLS (INDICATED BY WHEELCHAIR ICONS)  
H. REF. TO D2.08 FOR CONDITION OF CURB W/ GUTTER AT SIDEWALK CUTS FOR WHEELCHAIR RAMPS  
I. INSTALL 4" OF TOPSOIL IN ALL AREAS WITHIN 50' OF PARKING AND DRIVES, AND WITHIN 150' OF PERIMETER OF THE BUILDING. TOPSOIL IS STOCKPILED ON SITE BY THE GENERAL CONTRACTOR.

KEYED NOTES

1. BASEBALL PRACTICE FIELD - FOR INFORMATION ONLY
2. FOOTBALL PRACTICE FIELD - FOR INFORMATION ONLY
3. HANDICAP SIGN - REF. D2.01A
4. HANDICAP SIGN - VAN ACCESSIBLE - REF. D2.01A
5. CONCRETE SPLASBLOCK AND EROSION NETTING (NETTING IS 4' WIDE X 12' LONG) - REF. D2.17A
6. CONCRETE CURB AND GUTTER - REF. D2.02
7. NOT USED
8. CONCRETE ENTRANCE STRUCTURE
9. ASPHALT PAVING
10. WHEELCHAIR RAMP - REF. D2.08: 1 IN 12 MAX. SLOPE, TAPER CURBS
11. FLAGPOLE - REF. D2.08A
12. HANDICAP STALL - REF. D2.08B
13. CATCH BASIN - REF. D2.09
14. TRANSFORMER PAD - REF. D2.11
15. BOLLARD - REF. D2.12A
16. CONCRETE APPROACH - REF. D2.13A
17. CURB INLET - D2.10, D2.21, & D2.22
18. LIGHT POLE - REF. ELEC
19. CONCRETE HEADWALL AND BAG CRETE (BAG CRETE IS FLUME, WIDTH X 10' LONG) - REF. D2.16
20. PAVING BLOCKS - REF. SPEC
21. CONC. WALK - REF. D2.18
22. CONC. VALLEY - REF. D2.17B
23. CONC. WALKS AND RAMPS BY CITY - N.I.C.
24. EXISTING CURB INLET
25. FIRE HYDRANT - REF. MECH
26. TYPICAL STOPPING - REF. SPEC
27. CONTOURS 1358 TO 1359.50 CAN BE MODIFIED IF ADDITIONAL FILL IS NEEDED - CONTACT ARCHITECT IF THIS CHANGE IS NECESSARY
28. FIRE DEPARTMENT ACCESS SIGN - REF. D2.19A
29. FIRE LANE STRIP - PAINT CURB RED
30. EXTERIOR CONC. MECHANICAL PAD - REF. D3.02A
31. FOOTSCRAPER - REF. D5.05A
32. 4" CONCRETE PAVING
33. 6" CONCRETE PAVING
34. 4" CONCRETE SIDEWALK
35. SCREENWALL - REF. D4.05, D4.06
36. CHAIN LINK GATE - REF. SPEC
37. ASPHALT EDGE - REF. D2.02B

08 APRIL 1999 - BUILDING ELEVATION CHANGED FROM 1358' TO 1359'. AREA G GRADING REDUCED TO THAT ADJACENT TO BUILDING AND PARKING LOTS. ROOF DRAINAGE TO EAST REVISED TO FLUME IN lieu OF UNDERGROUND.

ADDENDUM #1

- PROPERTY LINE MOVED TO CORRECT LOCATION.
- SOME LIGHT POLES RELOCATED.
- FOOTSCRAPERS RELOCATED.
- WALK FROM PARKING TO PUBLIC SIDEWALK ADDED.
- SIDEWALK ALONG STREET FURTHER DEFINED AS TO CITY VS. CONTRACTOR PROVIDING.
- BOLLARDS ADDED AT GAS METER. REF. TO UTILITY PLAN FOR GAS METER LOCATION.

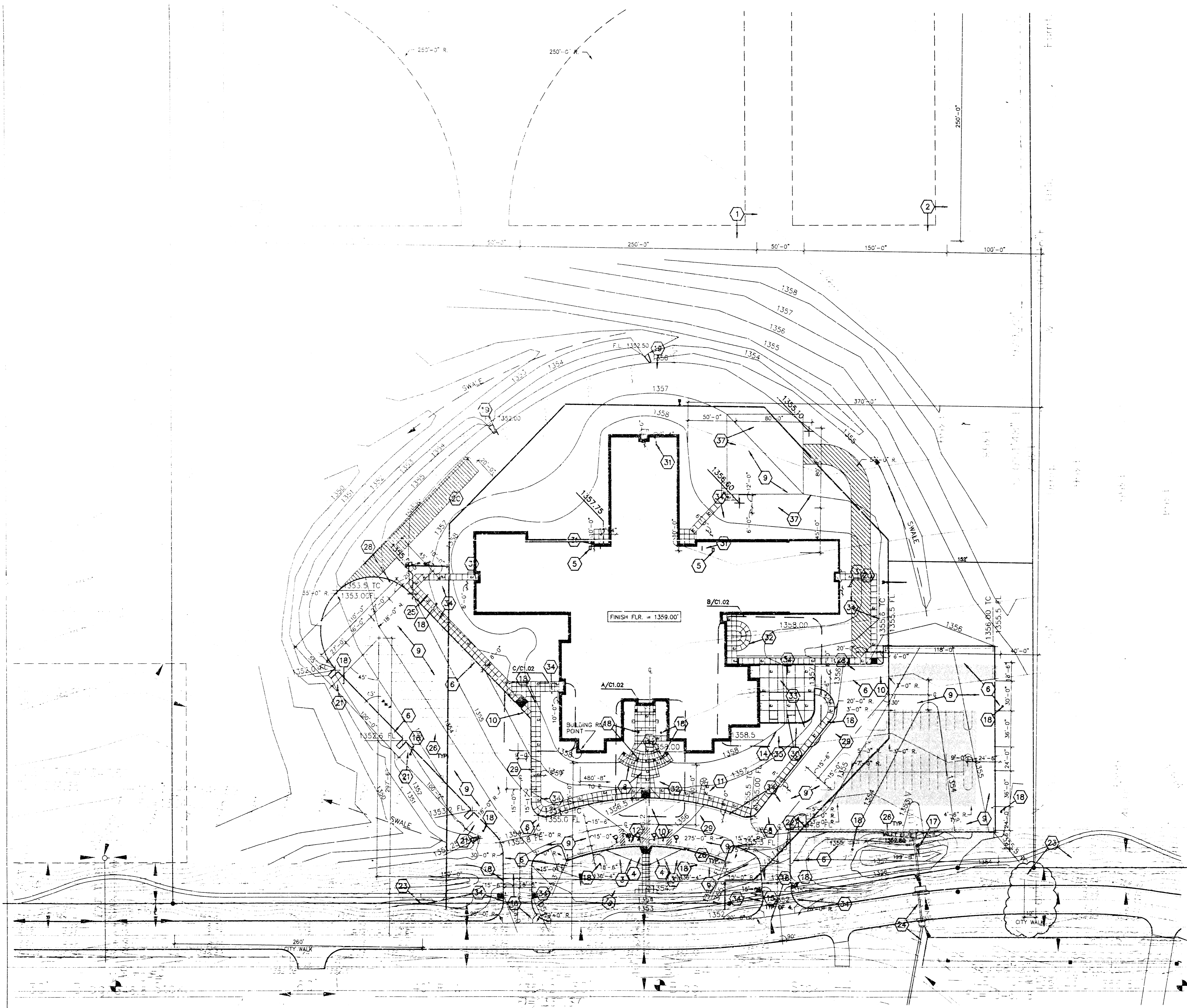
LEGEND

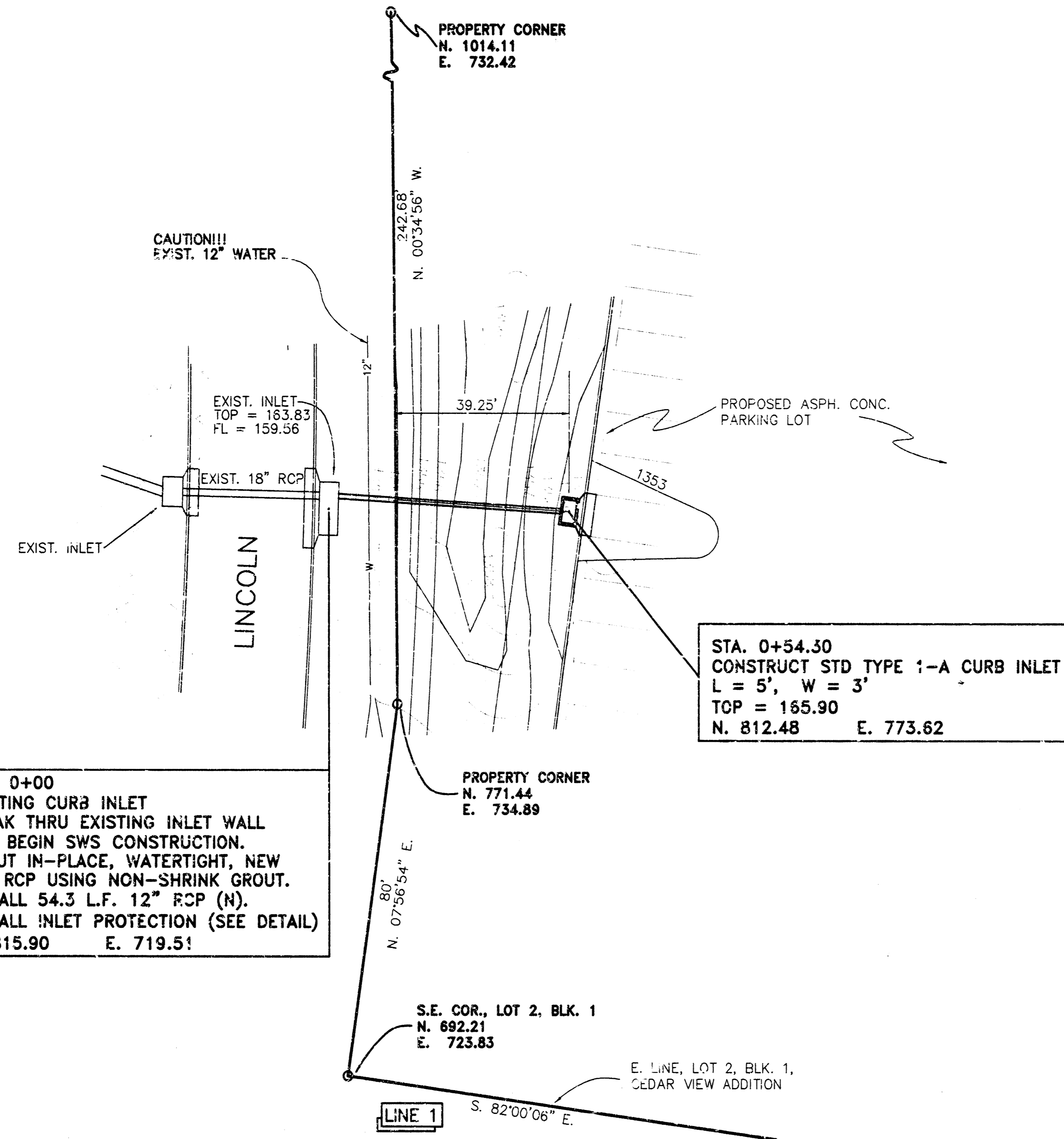
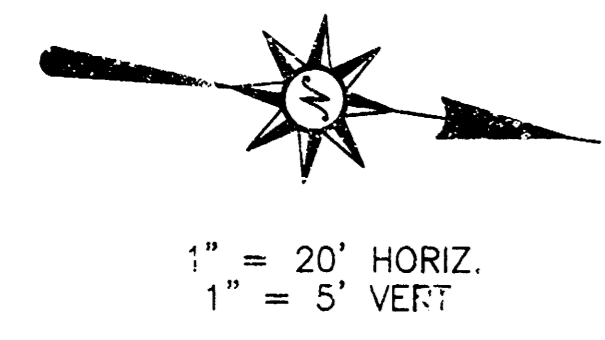
- EXISTING CONTOUR
- NEW CONTOUR
- LIGHT DUTY ASPHALT (5 1/2" THICKNESS)
- PAVING BLOCKS (REF. SPECIFICATIONS)

- UP = UTILITY POLE
- OE = OVERHEAD ELECTRIC
- CATV = CABLE TELEVISION
- FH = FIRE HYDRANT
- WV = WATER VALVE
- WM = WATER METER
- TSB = TELEPHONE SERVICE BOX
- NH = MANHOLE
- FL = FLOWLINE
- GM = GAS METER

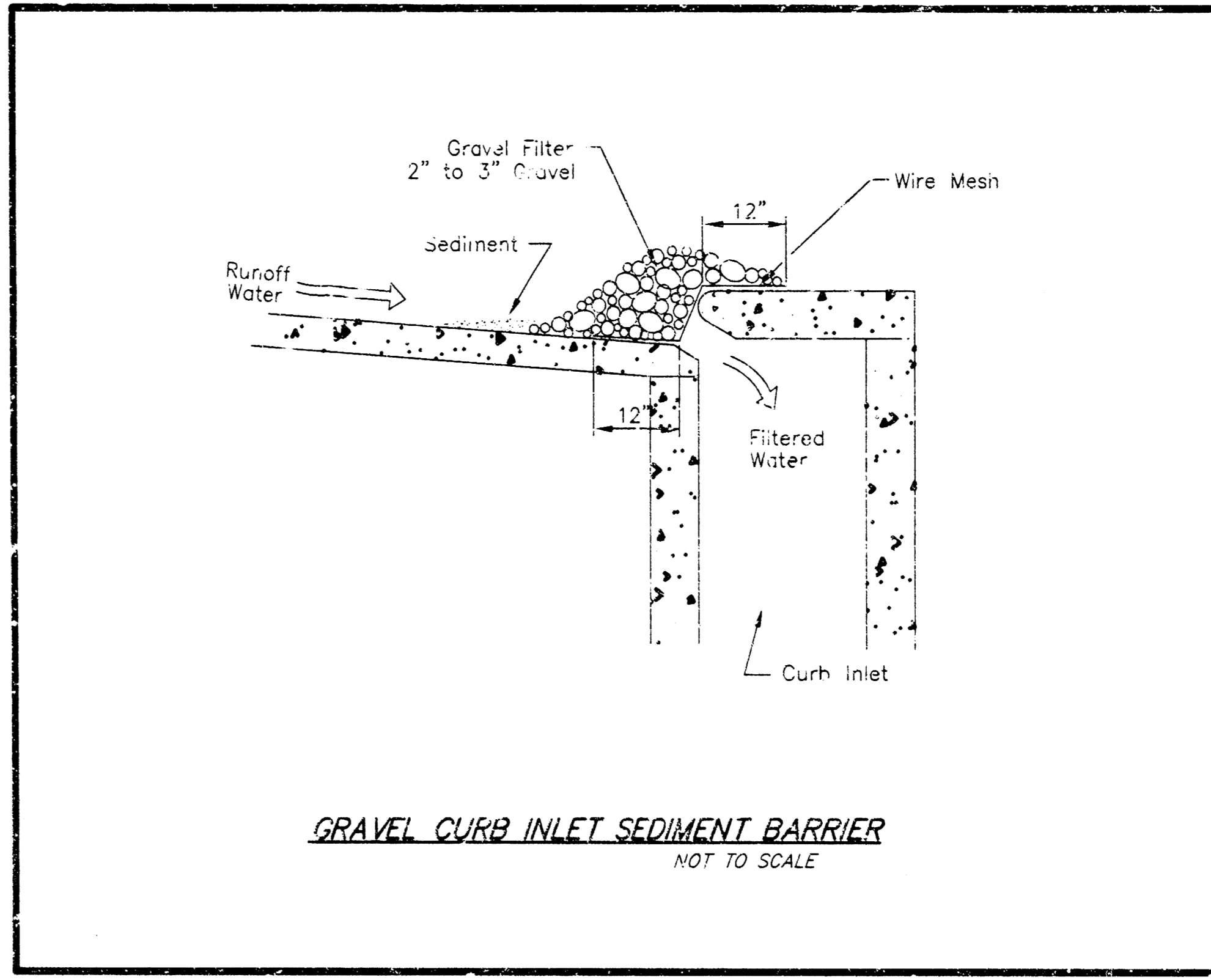
SITE PLAN  
1" = 40'-0"

DWG: DWGSCALE: 1" = 40'  
M:\2677.00\CD\REVISED\C1-01RRR  
CREATED: PLOTTED: 12/03/98 04/04/99

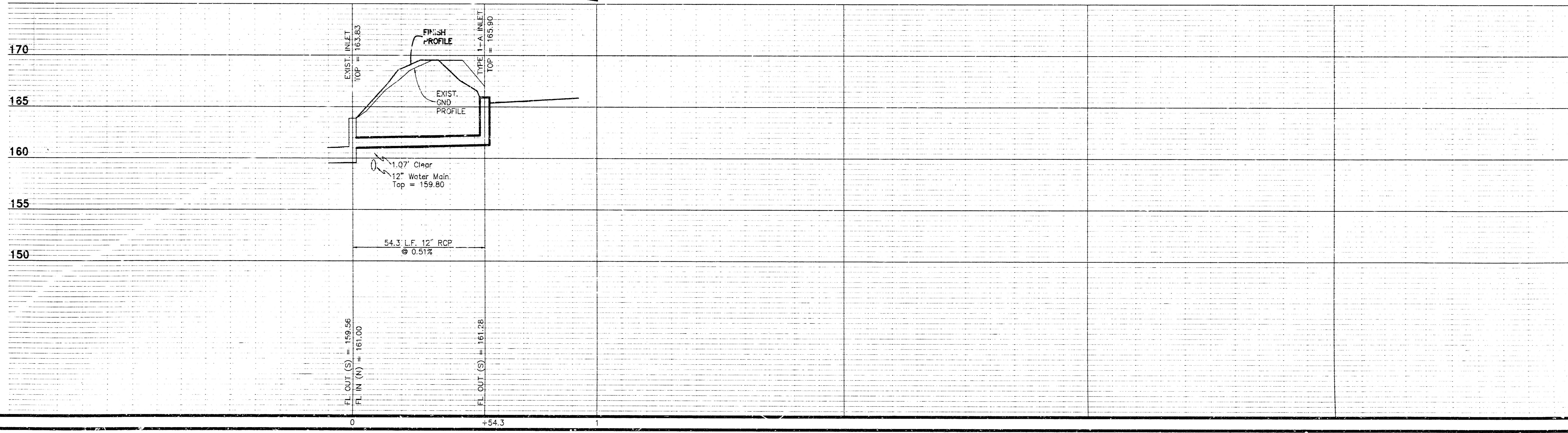




STA. 0+00  
EXISTING CURB INLET  
BREAK THRU EXISTING INLET WALL  
AND BEGIN SWS CONSTRUCTION.  
GROUT IN-PLACE, WATERTIGHT, NEW  
12" RCP USING NON-SHRINK GROUT.  
INSTALL 54.3 L.F. 12" RCP (N).  
INSTALL INLET PROTECTION (SEE DETAIL)  
N. 815.90 E. 719.51



BENCHMARK  
R.R. SPIKE IN 3RD POWER POLE EAST OF  
ROMNEY AND SOUTH OF LINCOLN.  
ELEV. = 166.13 CITY DATUM.



C:\SC14\WORK\SELTZERS\SW.DWG

PC100-5A

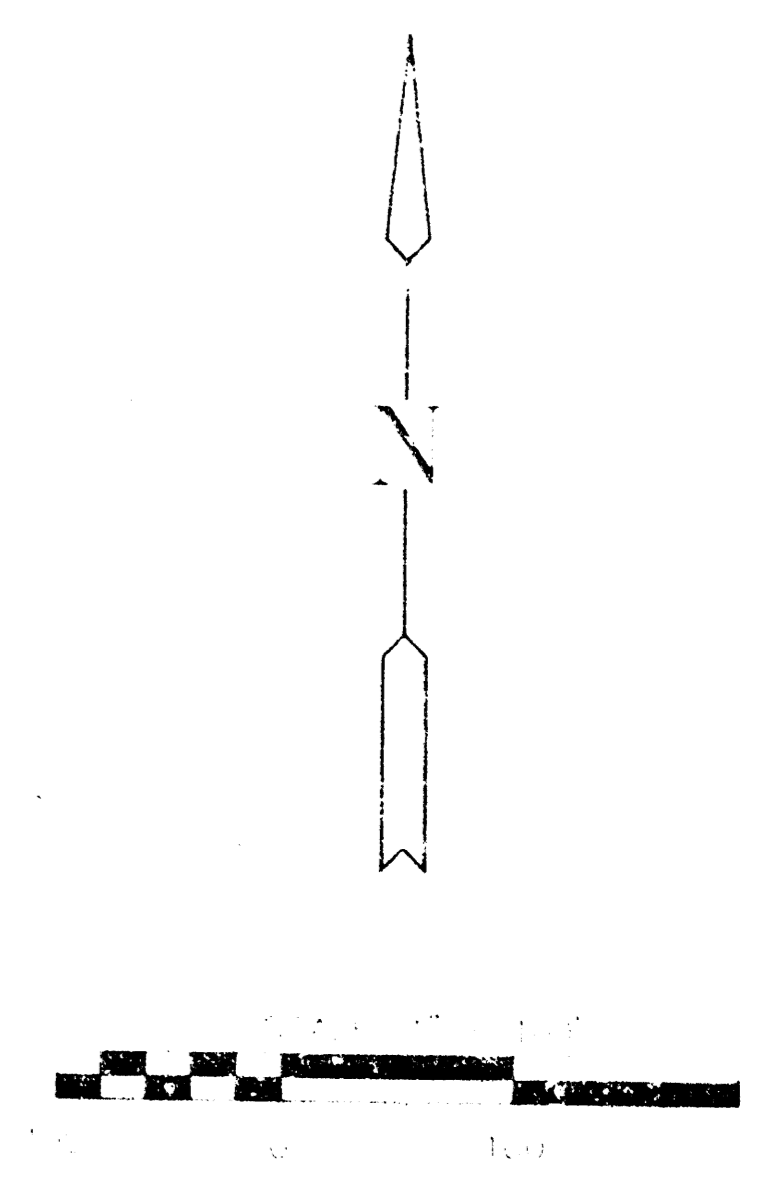
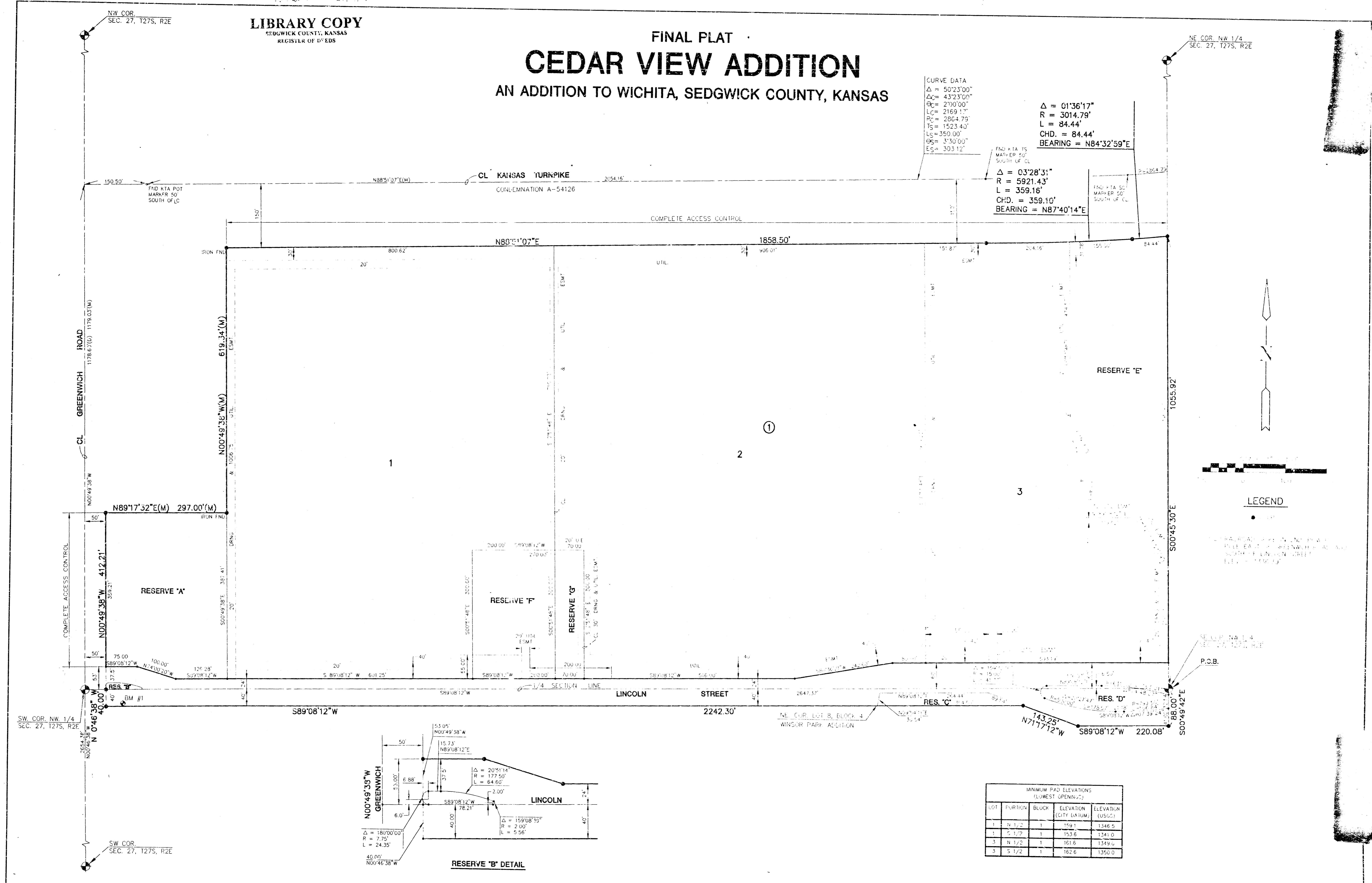
LIBRARY COPY  
SEDGWICK COUNTY, KANSAS  
REGISTER OF DEEDS

# FINAL PLAT CEDAR VIEW ADDITION AN ADDITION TO WICHITA, SEDGWICK COUNTY, KANSAS

CURVE DATA  
 $\Delta = 50'23''00''$   
 $\Delta C = 43'23''00''$   
 $Pc = 2'00''00''$   
 $Lc = 2169.17'$   
 $R = 2664.79'$   
 $Ts = 1523.40'$   
 $Ls = 350.00'$   
 $Ps = 3'30''00''$   
 $Es = 303.12'$

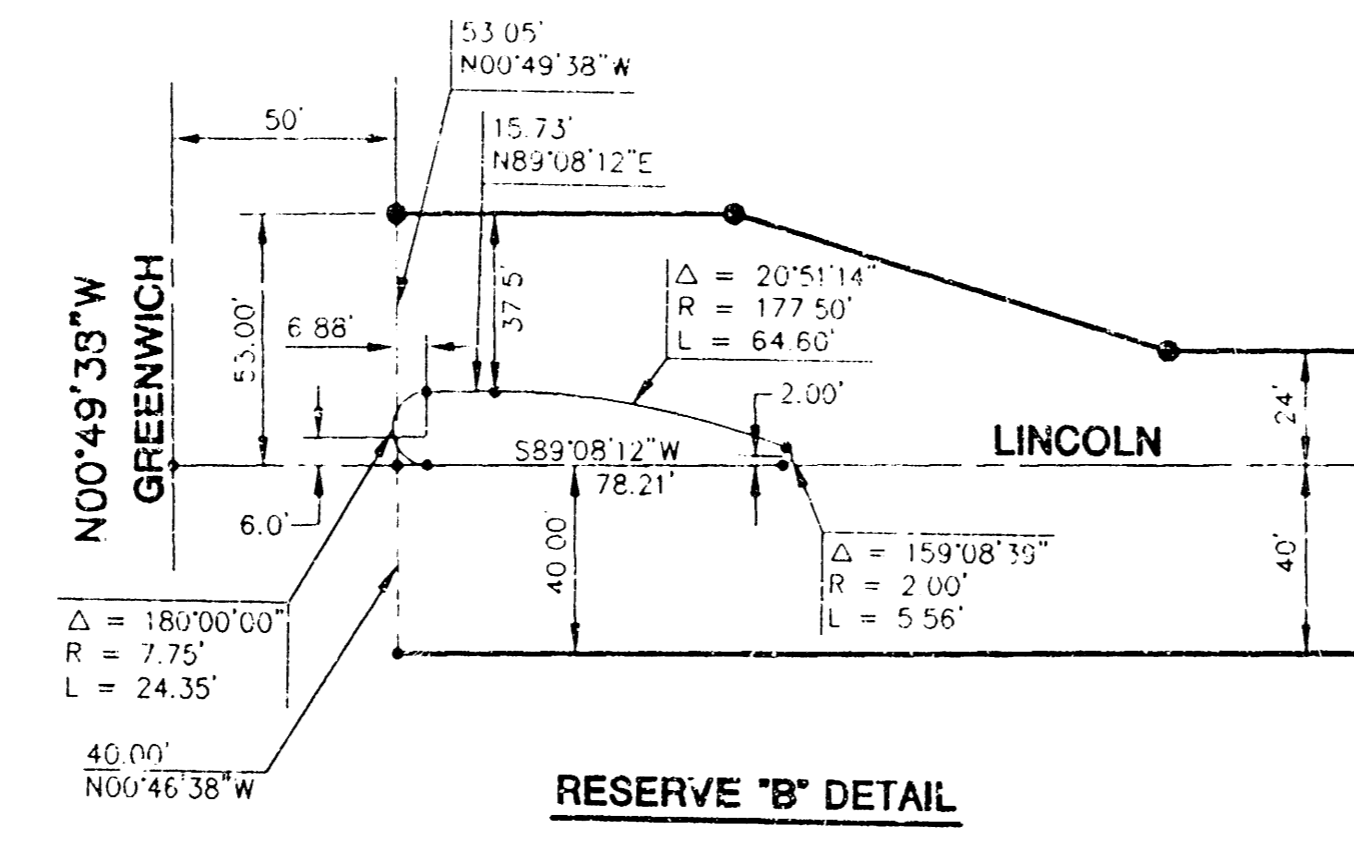
$\Delta = 01'36''17''$   
 $R = 3014.79'$   
 $L = 84.44'$   
 $CHD. = 84.44'$   
 $BEARING = N84'32''59''E$

$\Delta = 03'28''31''$   
 $R = 5921.43'$   
 $L = 359.16'$   
 $CHD. = 359.10'$   
 $BEARING = N87'40''14''E$



### LEGEND

1. PLAT AREA  
2. PLAT AREA  
3. PLAT AREA  
4. PLAT AREA  
5. PLAT AREA  
6. PLAT AREA  
7. PLAT AREA  
8. PLAT AREA  
9. PLAT AREA  
10. PLAT AREA



MINIMUM PAD ELEVATIONS (LOWEST GREENING)				
LOT	FURCH	BLK	ELEVATION (CITY DIAIUM)	ELEVATION (USGS)
1	N 1/2	1	159.1	1346.5
1	S 1/2	1	153.6	1241.0
3	N 1/2	1	161.6	1349.6
3	S 1/2	1	162.6	1350.0

10 03 04 16  
PC100-5A

60.00