

CONSTRUCTION PLANS FOR DRIVEWAY INLET MOORINGS NORTH ADDITION TO THE CITY OF WICHITA, KANSAS

MICHAEL E. LINDEBAK P.E. — CITY ENGINEER
PROJECT NO. 920-PPS
INDEX CODE 607361

GENERAL NOTES:

1. Utility service lines, poles, valve boxes, meters and etc. are to be adjusted as necessary by others prior to construction unless the plans specifically call for their adjustment by the Contractor. Existing utilities and their location, as shown on the plans, represent the best information obtainable for design. The Contractor will be required to work around existing utilities within the right-of-way which do not conflict with proposed construction.
2. The Contractor shall be responsible for preserving property irons. The Contractor will be required to reestablish any property irons which are damaged or destroyed by his construction operations. Such irons shall be reestablished by a licensed land surveyor in accordance with state laws.
3. All disturbed areas within street right-of-ways shall be seeded with temporary rye grass within 14 days of disturbance at a rate of 200 lbs. per acre.

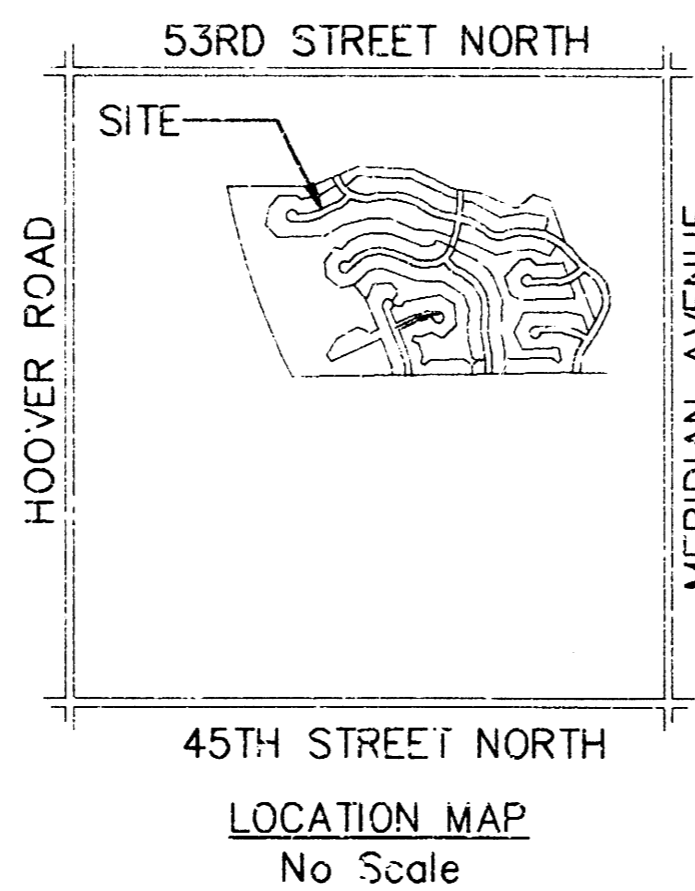
NOTE TO CONTRACTOR

Inspection and testing for this project is to be provided by a licensed consulting engineering firm under contract with the owner/developer. Said inspection is to be in accordance with the City of Wichita standard construction engineering practices and certified by a licensed professional engineer. No work shall be performed in dedicated easements or in public right-of-way by the contractor without such inspection. Nor shall any work be commenced in dedicated easements or public right-of-way without written authorization by the City Engineer.

APPROVED AS NOTED

BY THE CITY ENGINEER OF WICHITA

Sanitary Sewers _____
Storm Sewers VRH 7/27/99
Driveway Approaches _____
Water Mains _____
Paving _____



JULY 1999

PLANS PREPARED

BY

PE POE & ASSOCIATES OF KANSAS, INC.
CONSULTING ENGINEERS
3940 C. Center, Suite 200 ■ Wichita, KS 67208 ■ 316/855-4174 ■ Fax 316/685-4444

James M. Lindebak

7-26-99

INDEX

TITLE SHEET	SHEET 1
SANDKEY COURT	SHEET 2
DRIVEWAY INLET DETAIL	SHEET 3
MOORINGS NORTH ADDITION PLAT	SHEET 4

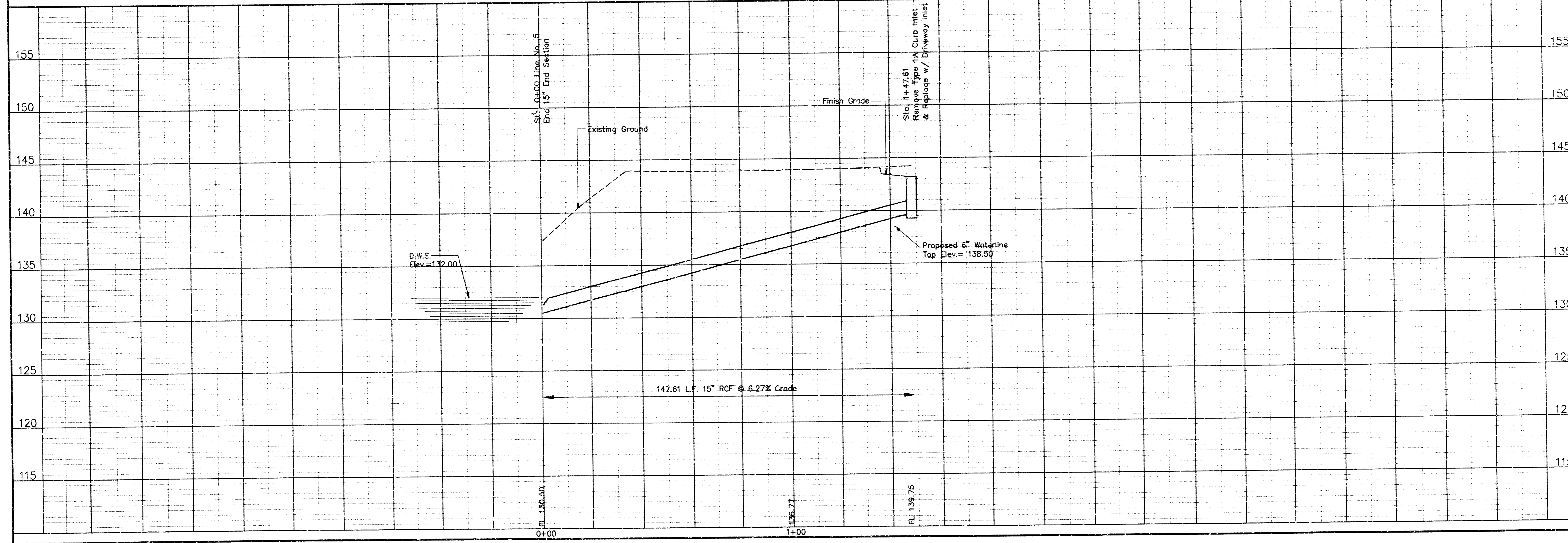
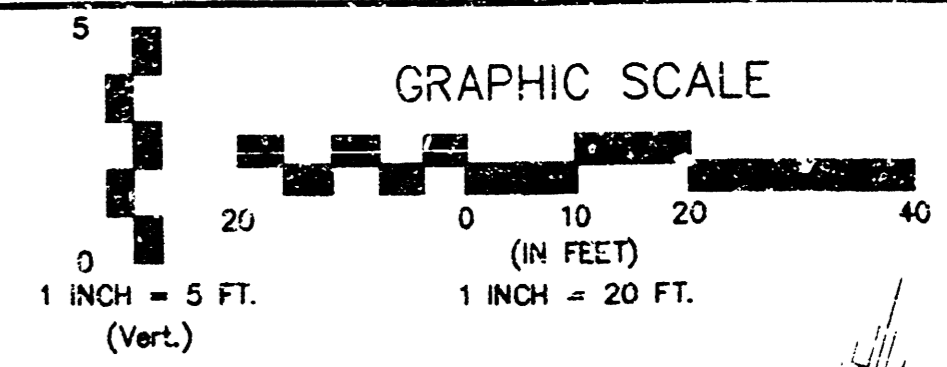
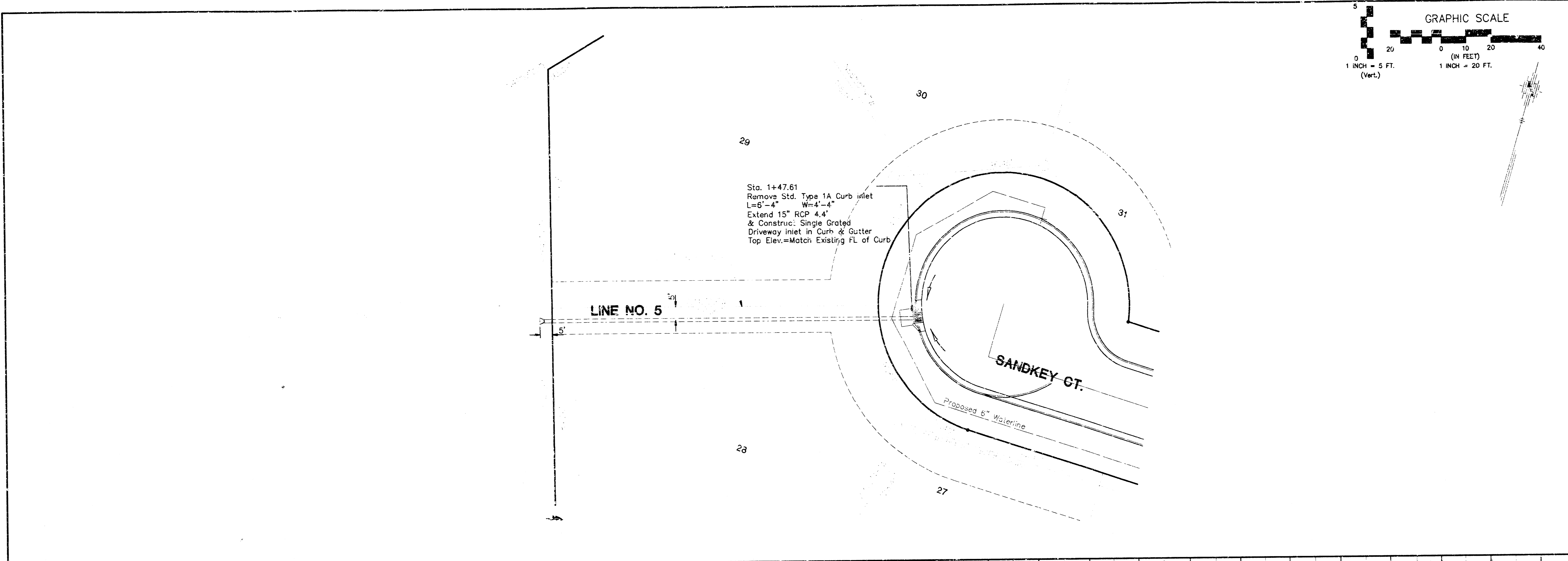
*Booked D-428
8/27/03 RDL*

BENCH MARKS

1. U.S.G.S. Standard Tablet 478' South of 53rd St. North and 28' West of Meridian. Elev. 143.85
2. 1" cut curb 60' west of CL Harborside on north side Keywest. Elev. 144.01
3. City of Wichita disc @ N.W. corner Keywest & Meridian. Elev. 141.85

14-B

6:\APPS\DC\A\1632\B\1632.dwg 10/11/98 11:55 AM



FINAL

Designed By: C. Miles
 Drawn By: S. Schmidt
 Plot Job No.: 156583
 Date: June 1998

2 of 4

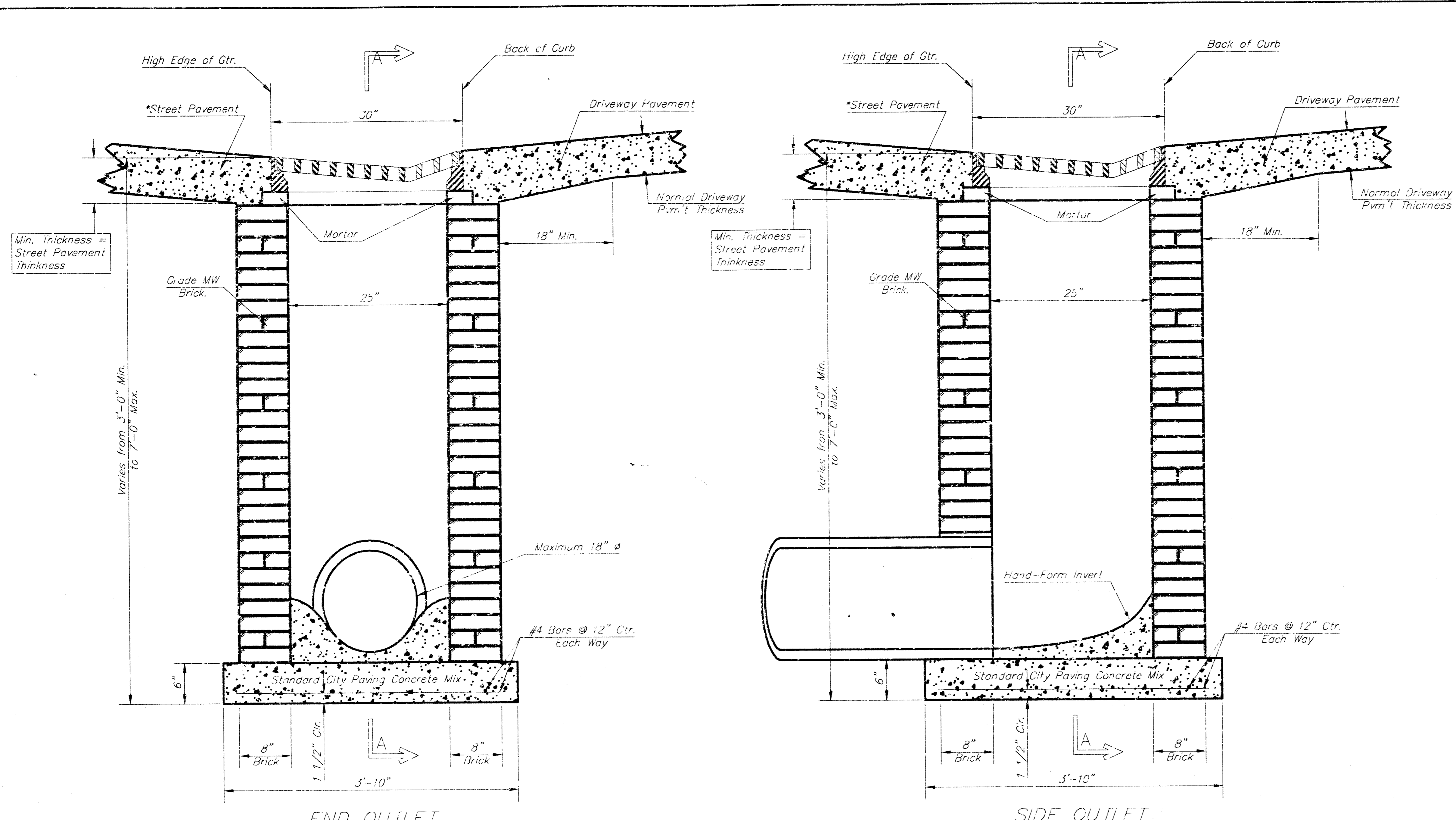
POE & ASSOCIATES OF KANSAS, INC.

CORPORATE OFFICE: 1100 N. W. 10TH ST., SUITE 200, WICHITA, KS 67202
 PHONE: (316) 261-1100 FAX: (316) 261-1101

**MOORING NORTH ADDITION
 STORM SEWER LINE NO. 5**

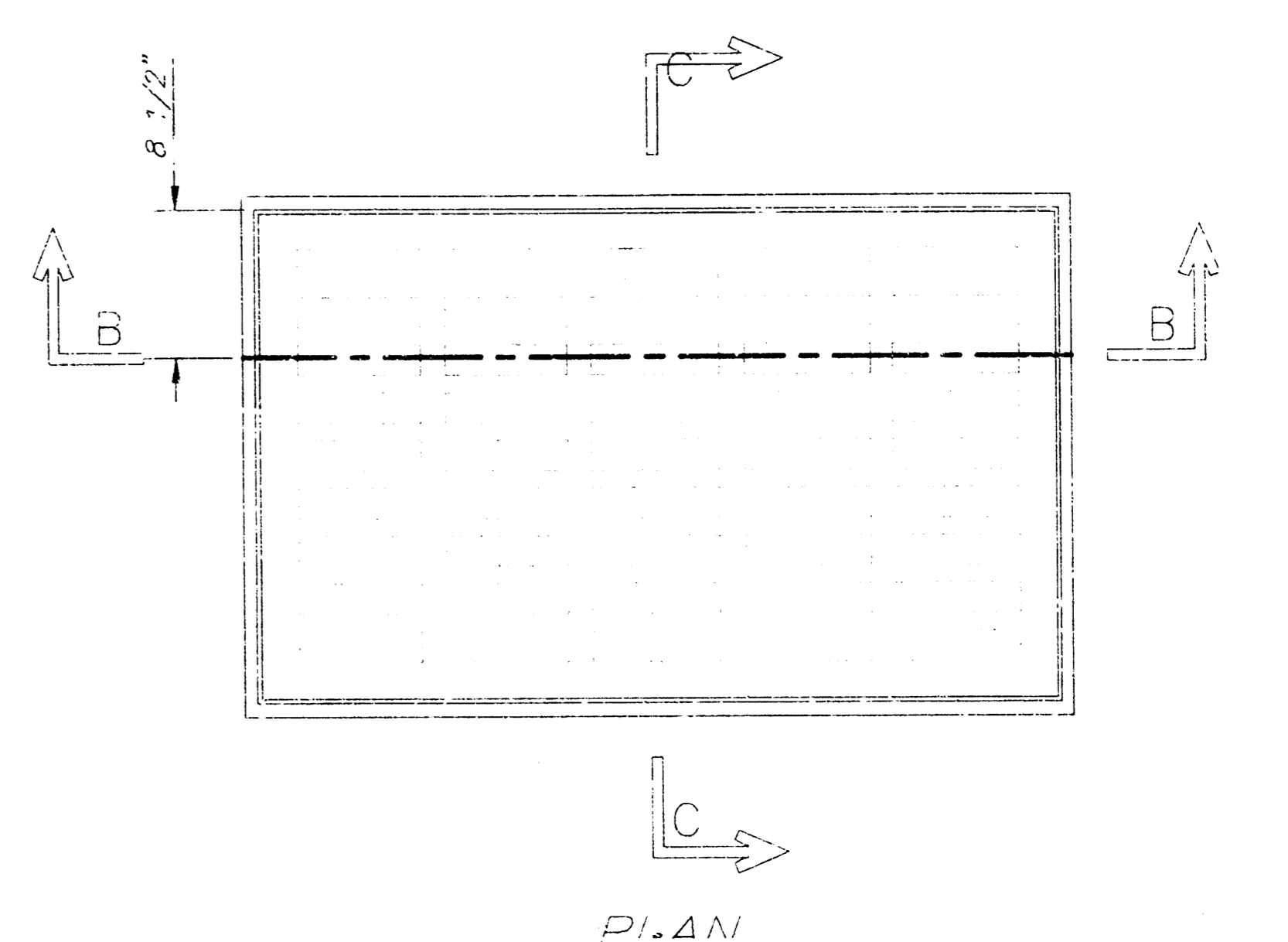
CITY OF WICHITA, KANSAS

MICHAEL E. ENCLER, P.E. - CITY ENGINEER
 Project No. 9703PPS Index Code: 20181

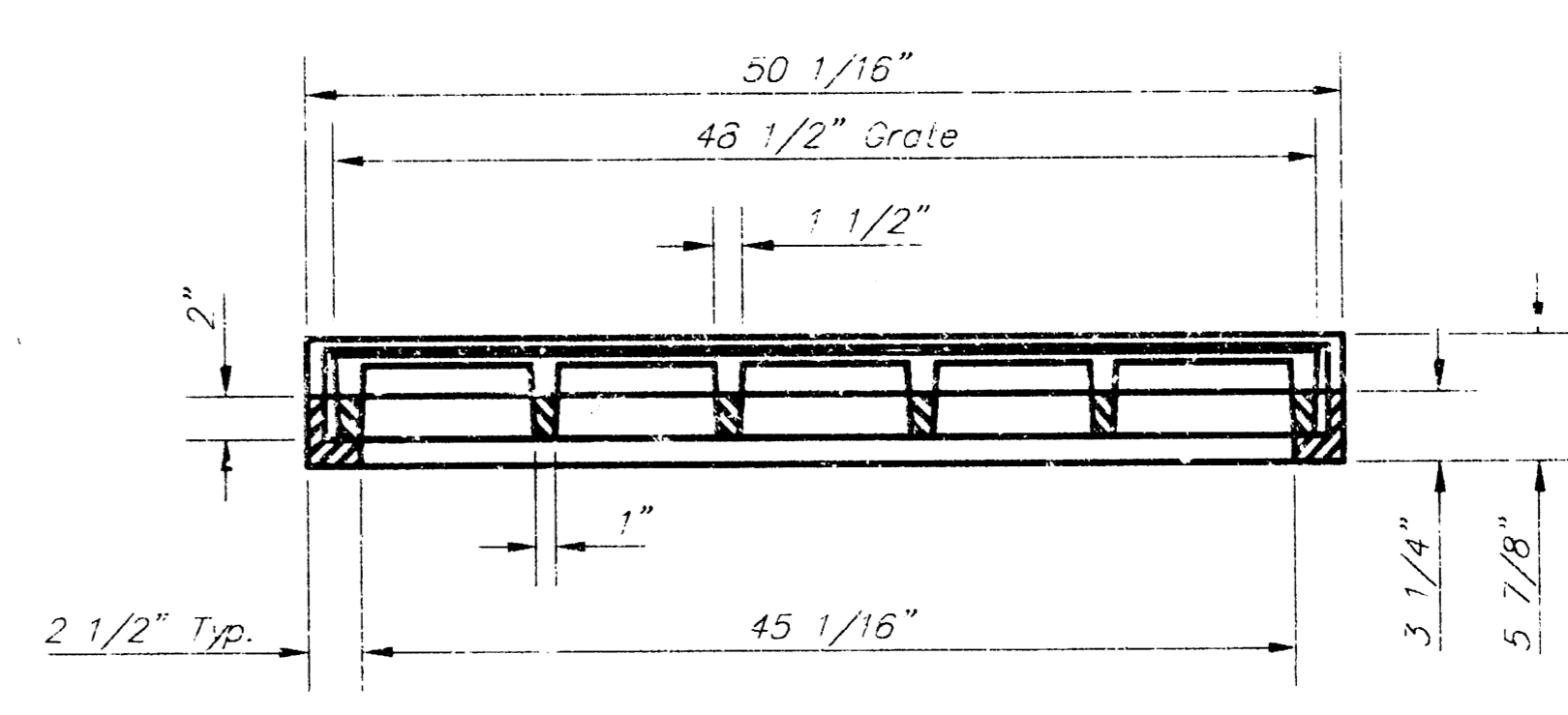


END OULET

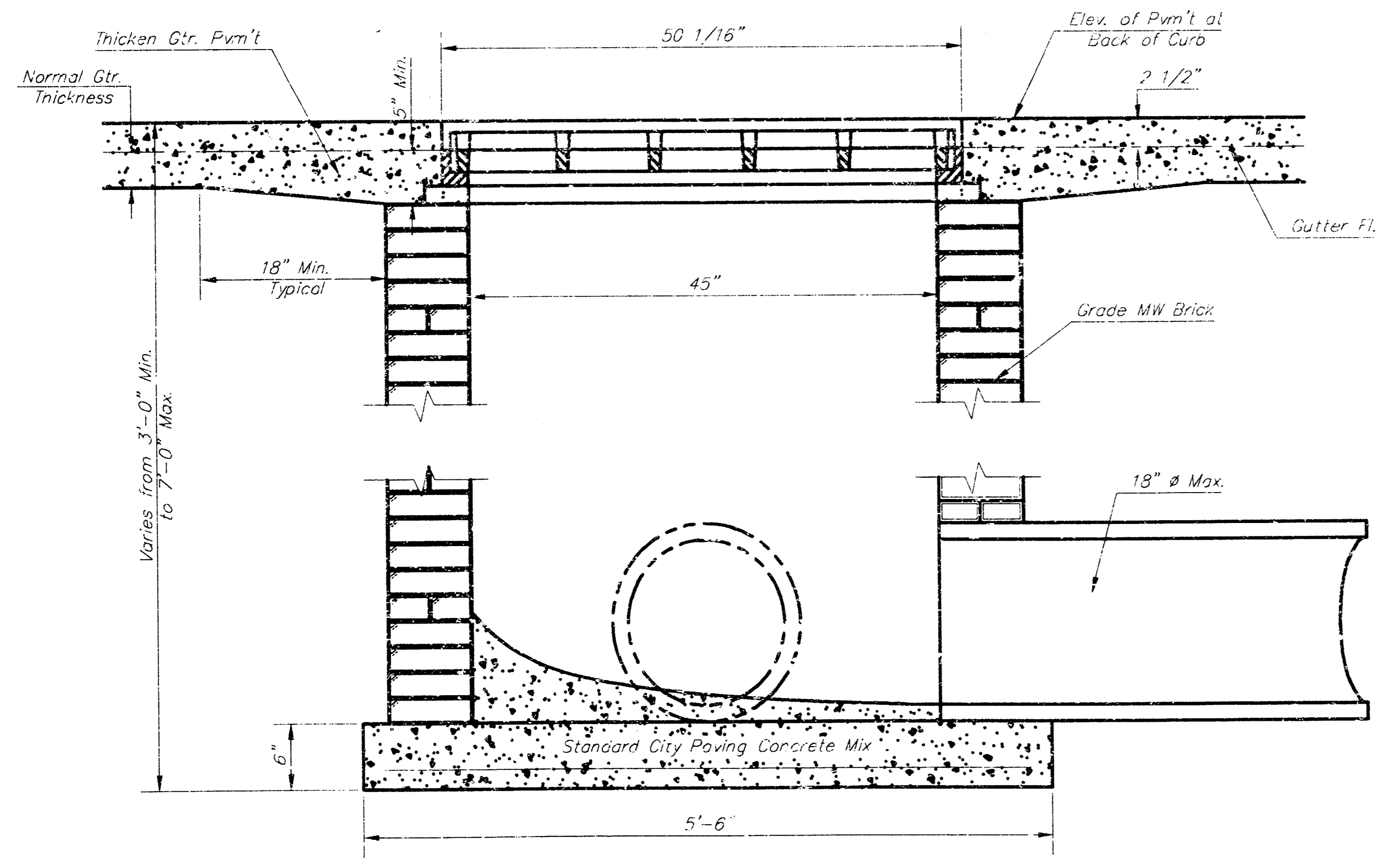
SIDE OULET



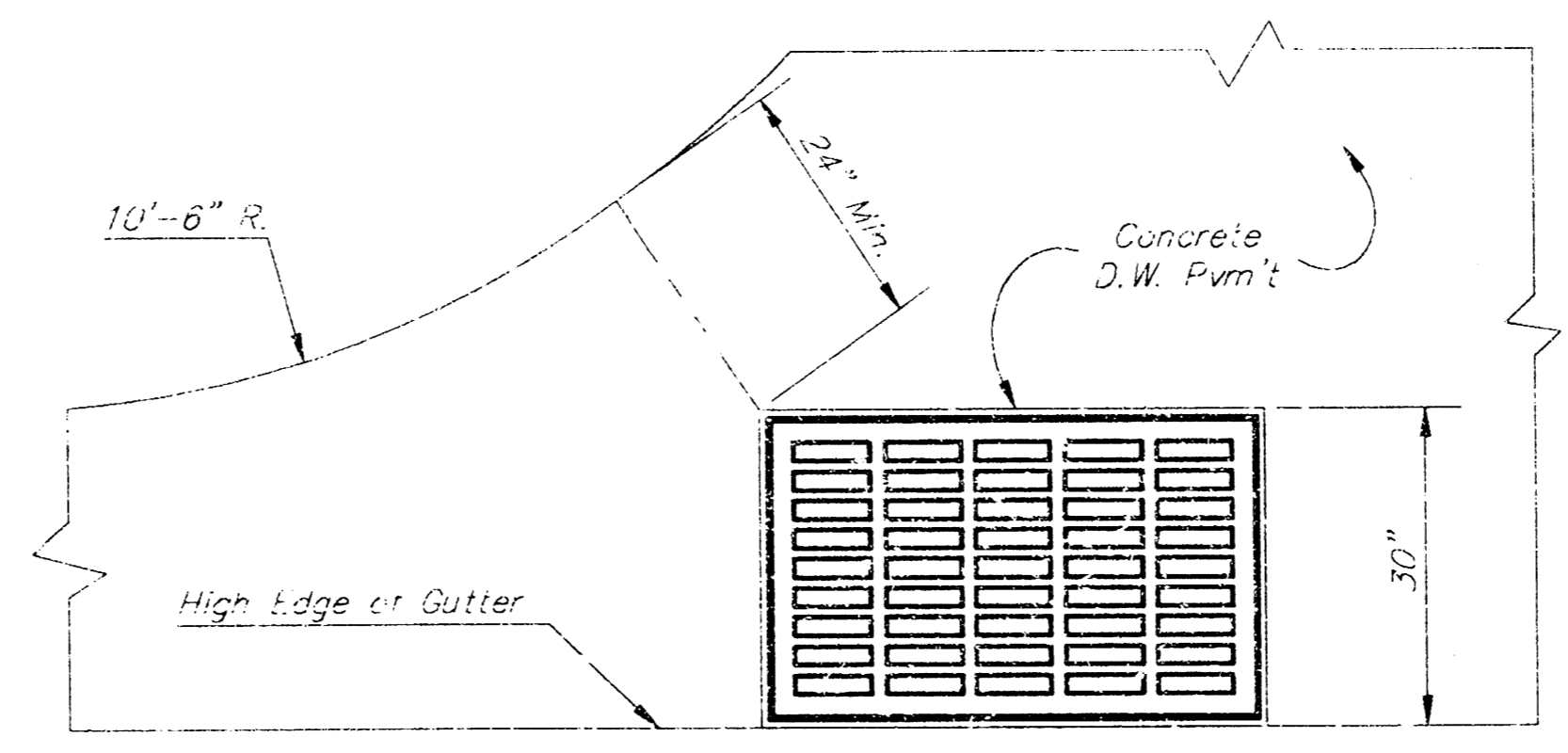
PLAN



SECTION B-B



SECTION A-A



PLAN

Radius Ramp Drive to be Constructed On Lot 3, Block 2 per City Standard

GENERAL NOTES

1. Grate frame to be installed on thin mortar cushion to insure full support along brick walls. Concrete used for inlet construction shall be concrete pavement mix.
2. Inlet invert shall be shaped with 8 sack sand mix concrete to create flow channels and to increase hydraulic efficiency such that the inlet will be self cleaning between all inlet and/or outlet pipes.
3. The ends of all pipes installed in inlets shall be cut off flush with the inside face of the inlet wall.
4. Inlet Frame and Grate to be Deeter #2095 of approved equal

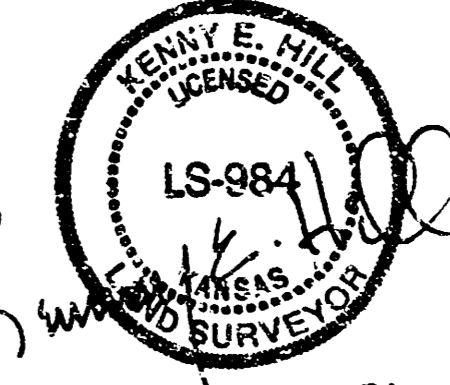
DEETER #2095 FRAME & GRATE
TOTAL WEIGHT: 705 lbs.

<p>THE CITY OF WICHITA</p> <p>CITY ENGINEER'S OFFICE CITY HALL - SEVENTH FLOOR 105 NORTH OLIVE STREET WICHITA, KANSAS 67202 (316) 266-4000 (316) 266-4114 FAX</p>	<p>DRIVEWAY GRATED INLET SINGLE</p>	
	<p>M. E. LINDEBAK P.E. - CITY ENGINEER</p>	
<p>PROJECT NUMBER 920-PPS</p>	<p>INDEX CODE 607861</p>	
<p>DATE JULY 99</p>	<p>SHEET 3 OF 4</p>	

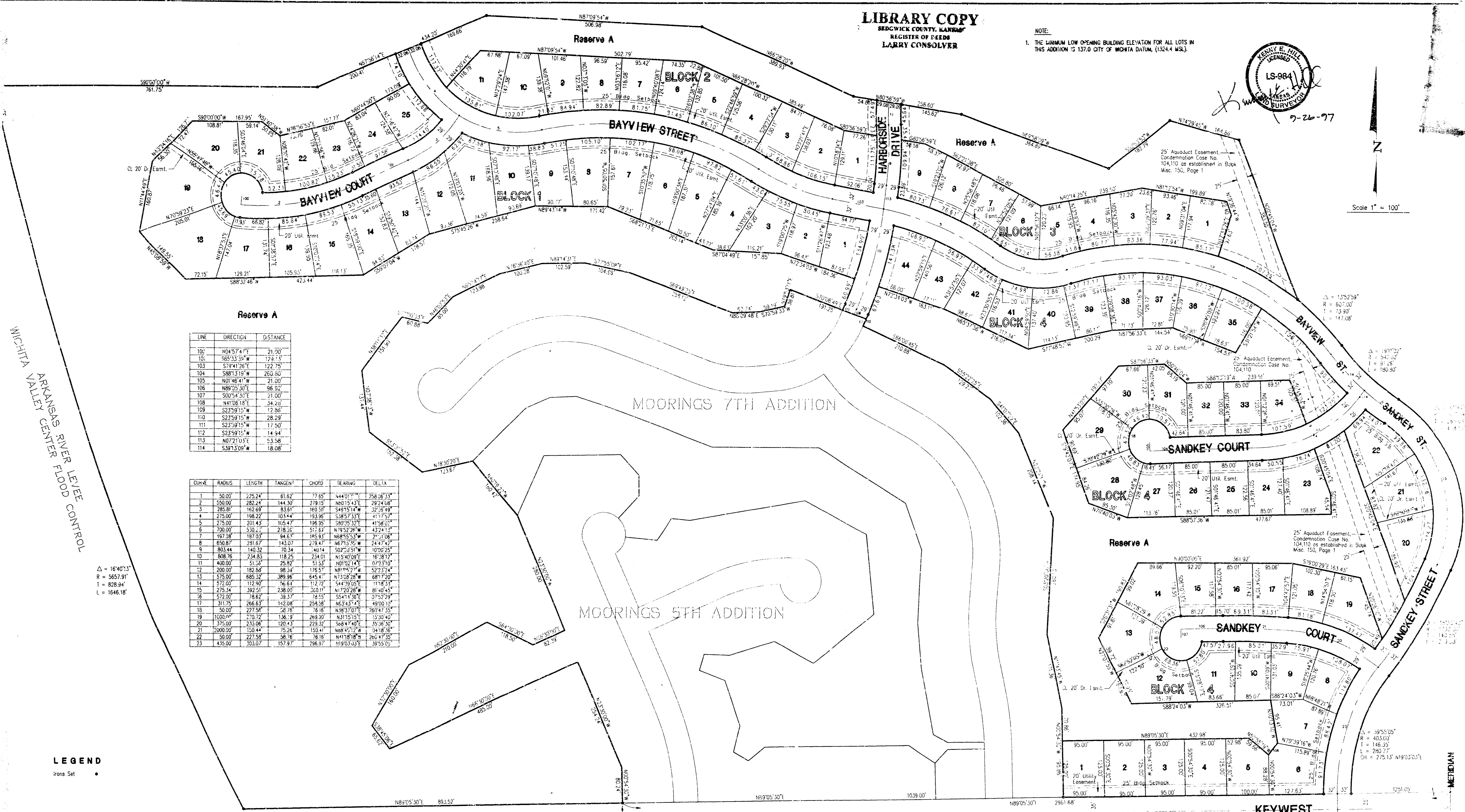
6. W.P.S./DCA/10/01 JUL 23 11:43:27 1999 Melt Perez

LIBRARY COPY
SEDGWICK COUNTY, KANSAS
REGISTER OF DEEDS
LARRY CONSOLVER

NOTE:
1. THE MINIMUM LOW OPENING BUILDING ELEVATION FOR ALL LOTS IN THIS ADDITION IS 137.0 CITY OF WICHITA DATUM, (1324.4 MSL).



Scale 1" = 100'



LINE	DIRECTION	DISTANCE
100	N04°57'47\"	21.00'
101	S85°33'35\"	173.17'
102	S74°42'26\"	122.75'
103	S88°13'10\"	266.80'
104	N01°46'41\"	21.00'
105	N89°35'30\"	56.92'
106	S00°54'53\"	21.00'
107	N41°06'18\"	34.29'
108	S23°59'15\"	12.86'
109	S23°59'15\"	28.29'
110	S23°59'15\"	17.50'
111	S23°59'15\"	14.94'
112	N07°21'03\"	53.58'
113	S39°12'09\"	18.08'

CURVE	RADIUS	LENGTH	TANGENT	CHORD	BEARING	DELTA
1	50.00'	225.24'	81.62'	77.85'	N44°01'00\"	758.36°33'
2	150.00'	282.24'	144.90'	219.15'	N01°54'00\"	2924.08'
3	285.81'	162.69'	83.61'	160.50'	S48°51'14\"	32°29'49'
4	275.00'	198.22'	103.44'	193.96'	S38°57'33\"	41°17'57'
5	275.00'	201.45'	105.47'	196.95'	S30°45'32\"	41°58'01'
6	200.00'	5.39'	2.88'	5.17'	N1°32'26\"	4324.14'
7	497.38'	187.03'	94.61'	185.83'	N88°55'33\"	31°21'06'
8	650.87'	251.67'	143.07'	279.47'	N67°13'50\"	2447.42'
9	803.44'	140.32'	70.34'	40.14'	S02°23'51\"	10300.25'
10	808.76'	234.83'	118.25'	234.01'	N15°40'00\"	1628.10'
11	400.00'	51.58'	25.82'	51.53'	N01°52'14\"	07231.0'
12	200.00'	182.68'	98.39'	175.57'	N81°45'27\"	52723.24'
13	175.00'	688.32'	389.98'	645.41'	N13°28'28\"	5877.20'
14	572.00'	112.90'	56.61'	112.72'	S44°36'08\"	1178.51'
15	275.34'	392.51'	238.00'	302.11'	N17°20'28\"	8140.45'
16	572.00'	78.62'	39.37'	78.53'	S54°13'56\"	37527.29'
17	311.75'	286.83'	143.08'	298.88'	N65°33'45\"	6900.19'
18	50.00'	227.58'	78.76'	76.16'	N49°37'07\"	26947.35'
19	1000.00'	270.72'	136.3'	269.20'	N31°15'15\"	1330.40'
20	1375.00'	233.06'	120.43'	229.32'	S68°47'40\"	5538.30'
21	2000.00'	150.44'	75.22'	150.41'	N68°47'40\"	34147.06'
22	50.00'	227.58'	78.76'	76.16'	N118°18'00\"	26047.35'
23	45.00'	303.07'	151.97'	296.97'	H193°03'00\"	39550.00'

Δ = 16'40.13"
R = 5657.91'
L = 828.94'
L = 1646.16'

LEGEND
Iron Set

THE MOORINGS NORTH

AN ADDITION TO WICHITA, SEDGWICK COUNTY, KANSAS

POE & ASSOCIATES OF KANSAS, INC.
CONSULTING ENGINEERS
3840 E. Central, Suite 200 • Wichita, KS 67208 • 316/265-4114 • Fax: 316/265-4114

BENCHMARK:
Bench Mark - U.S.G.S. Standard Tablet 478' South of 5.3rd St. North and 28' West of Meridian. Elevation 143.85

SE Corner S1/4 Sec. 24
T26S, R1W